

*Comprehensive
Annual Financial Report
For The Year Ended
12.31.04*

Momentum

Achievements That Shape The Community





Introduction

- 2 Mission Statement
- 3 Port Authority Facilities and Services
- 4 The New York-New Jersey Region
- 5 Letter of Transmittal to the Governors
- 6 Board of Commissioners
- 8 Officers and Directors, Organization Chart
- 9 Letter from the Executive Director
- 10 2004 Highlights
- 23 Year in Review
- 37 Letter of Transmittal

Financial Section

- 43 Report of Independent Auditors
- 44 Management’s Discussion and Analysis
- Basic Financial Statements
- 50 Consolidated Statements of Net Assets
- 51 Consolidated Statements of Revenues, Expenses and Changes in Net Assets
- 52 Consolidated Statements of Cash Flows
- 54 Notes to Consolidated Financial Statements
- Financial Schedules Pursuant to Port Authority Bond Resolutions
- 78 Schedule A – Revenues and Reserves
- 79 Schedule B – Assets and Liabilities
- 80 Schedule C – Analysis of Reserve Funds
- Statistical and Other Supplemental Information
- 83 Schedule D – Selected Statistical Financial Data
- 85 Schedule E – Information on Port Authority Operations
- 86 Schedule F – Information on Port Authority Capital Program Components
- 87 Schedule G – Facility Traffic

Contents

Mission

To identify and meet the critical transportation and infrastructure needs of the bistate region's businesses, residents and visitors: providing the highest quality, most efficient transportation and port commerce facilities and services that move people and goods within the region, providing access to the rest of the nation and to the world, and strengthening the economic competitiveness of the New York-New Jersey metropolitan region.



Aviation

John F. Kennedy International Airport
Newark Liberty International Airport
LaGuardia Airport
Teterboro Airport
Downtown Manhattan Heliport
AirTrain JFK
AirTrain Newark

Tunnels, Bridges & Terminals

George Washington Bridge
George Washington Bridge Bus Station
Lincoln Tunnel
Port Authority Bus Terminal
Holland Tunnel
Bayonne Bridge
Goethals Bridge
Outerbridge Crossing

Port Commerce

Auto Marine Terminal
Brooklyn Port Authority Marine Terminal
 Brooklyn Piers
 Red Hook Container Terminal
Elizabeth-Port Authority Marine Terminal
Port Newark
Howland Hook Marine Terminal

Port Authority Trans-Hudson

PATH Rail Transit System
Journal Square Transportation Center

Real Estate & Development

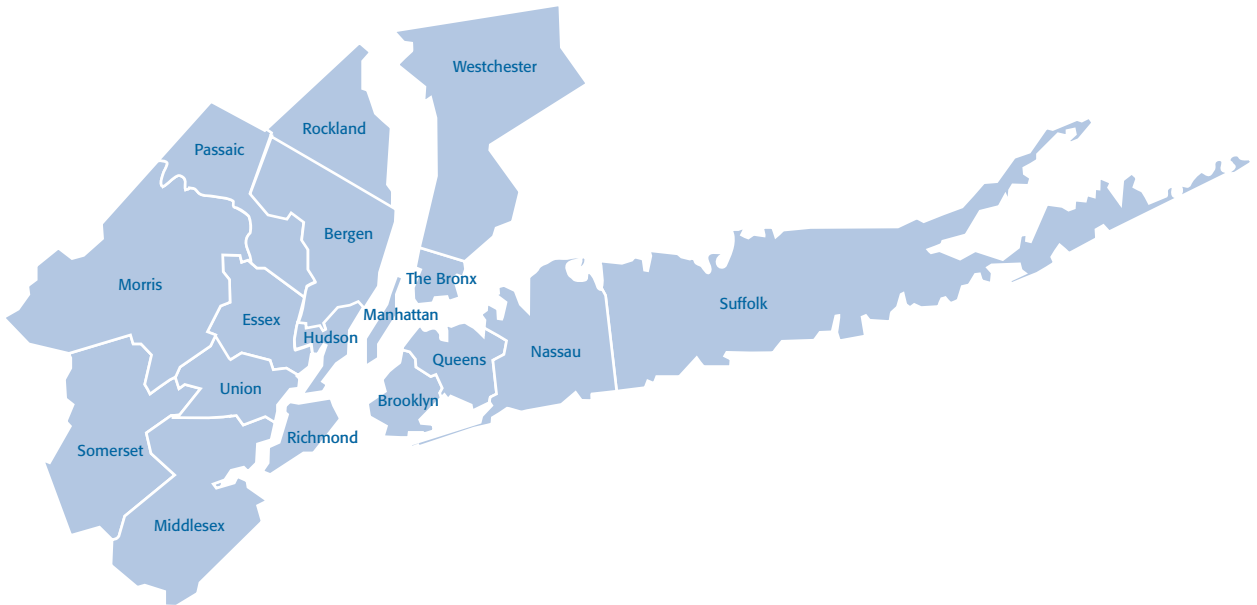
The Legal Center
The Teleport
Ferry Transportation
Essex County Resource Recovery Facility
Bathgate Industrial Park
Industrial Park at Elizabeth
Waterfront Development
 Queens West Waterfront Development
 The South Waterfront at Hoboken
World Trade Center Site

International Business Development

London
Tokyo
Representatives in
 Hong Kong, Shanghai, Singapore

Facilities & Services

The New York-New Jersey Region



Area	3,900 Square Miles
Population	17.0 Million <i>(estimate for 2003)</i>
Labor Force	8.3 Million <i>(average for 2004)</i>
Total Wage & Salary Jobs	7.8 Million <i>(average for 2004)</i>
Total Personal Income	\$745 Billion <i>(estimate for 2004)</i>

The New York-New Jersey Metropolitan Region, one of the largest and most diversified in the nation, consists of the five New York boroughs of Manhattan, Brooklyn, Queens, Richmond (Staten Island) and The Bronx; the four suburban New York counties of Nassau, Rockland, Suffolk and Westchester; and the eight northern New Jersey counties of Bergen, Essex, Hudson, Middlesex, Morris, Passaic, Somerset and Union.

The Honorable George E. Pataki
Governor, State of New York

The Honorable Richard J. Codey
Acting Governor, State of New Jersey



Dear Governors:

In compliance with the Port Compact of 1921, we are pleased to submit to you and the legislatures of New York and New Jersey the 2004 Annual Report of The Port Authority of New York and New Jersey.

Displaying strength and resilience, the Port Authority recorded a significant milestone in the New York-New Jersey region's recovery from the terrorist attacks of 2001: activity levels at our airports, bridges, tunnels and seaport exceeded those set prior to September 11, 2001.

The region shows notable signs of progress, demonstrating renewed economic vigor with a dramatic 20 percent rise in PATH ridership, a 12 percent increase in passengers at our three major airports, a 12 percent jump in cargo volume at the Port of New York and New Jersey, and a 2 percent rise in vehicles on the six trans-Hudson crossings. The PATH surge was especially meaningful, coming in the first full year of restored service to Lower Manhattan.

These increases were made possible by the Port Authority's sustained commitment to heightening the efficiency, reliability and security of its operations. Guided by your leadership, the agency continued investments in the region's transportation network, including The World Trade Center Transportation Hub, the PATH system and complementary bistate initiatives to ensure New York's Pennsylvania Station will accommodate ridership growth.

The Port Authority also made important strides in promoting a goods-movement agenda with New York and New Jersey to improve the rail freight system's infrastructure and mitigate truck traffic on roads and crossings.

Perhaps most importantly, to address the short-term and long-term needs of the region, the agency recently recast the previous five-year planning framework into a ten-year strategic plan, titled "A Vision for the Region." The ten-year plan represents nearly two years of careful analysis and offers a broader context in which to make the investment decisions that benefit those who live, work and conduct business in our region.

As we build on the momentum achieved in 2004, we strongly believe the agency's investments and strategic capital plan will build on our tradition of visionary long-term planning and will bolster the region for decades to come.

Very truly yours,

A handwritten signature in black ink, appearing to read "Anthony R. Coscia".

Anthony R. Coscia
Chairman

A handwritten signature in black ink, appearing to read "Charles A. Gargano".

Charles A. Gargano
Vice Chairman

Board of Commissioners

Origins of the Port Authority

The Port Authority of New York and New Jersey was established on April 30, 1921. It was the first interstate agency ever created under a clause of the Constitution permitting compacts between states with Congressional consent.

The agency's area of jurisdiction was called the Port District, a bistate region generally within 25 miles of the Statue of Liberty. The mandate of the agency was to promote and protect the commerce of the bistate port and to undertake port and regional improvements not likely to be financed by private enterprise or to be attempted by either state alone: a modern wharfage for the harbor shared by the two states, tunnel and bridge connections between the states and, in general, trade and transportation projects to promote the region's economic well-being.

Governance of the Port Authority

The Governor of each state appoints six Commissioners to the agency's Board of Commissioners, each appointment subject to the approval of the respective state senate.

The twelve Commissioners serve as public officials without remuneration.

The Governors retain the right to veto the actions of the Commissioners. Within the Port District, the Port Authority undertakes projects and activities in accordance with the Port Compact of 1921 and amendatory and supplemental bistate legislation.

The Board of Commissioners appoints an Executive Director to effect its policies and manage day-to-day operations.

Board of Commissioners

Anthony R. Coscia, Chairman

Charles A. Gargano, Vice Chairman

Bruce A. Blakeman

Michael J. Chasanoff

Christine A. Ferer¹

Angelo J. Genova²

David S. Mack

Raymond M. Pocino

Anthony J. Sartor

Henry R. Silverman

Jack G. Sinagra

Anastasia M. Song¹

David S. Steiner

Kenneth J. Ringler Jr., Executive Director

James P. Fox, Deputy Executive Director

Footnotes

1. Commissioner Ferer joined the Board on June 15, 2004, succeeding Commissioner Song.

2. Commissioner Genova joined the Board on July 1, 2004, succeeding Commissioner Martini, who resigned from the Board on November 18, 2002.



Anthony R. Coscia
Partner
Windels Marx Lane
& Mittendorf, LLP



Charles A. Gargano
Chairman &
Chief Executive Officer
Empire State
Development Corporation



Bruce A. Blakeman
Partner
Robert M. Blakeman &
Associates



Michael J. Chasanoff
Managing Partner
Chasanoff Properties



Christine A. Ferer
Owner
Applevision/Vidicom



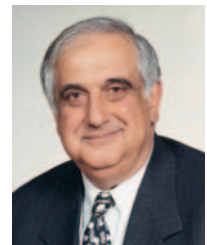
Angelo J. Genova
Senior Partner
Genova, Burns & Vernoia



David S. Mack
Vice President
The Mack Company



Raymond M. Pocino
Vice President/Eastern
Regional Manager
Laborers International
Union of North America



Anthony J. Sartor
President &
Chief Operating Officer
KeySpan Services, Inc.



Henry R. Silverman
Chairman &
Chief Executive Officer
Cendant Corporation



Jack G. Sinagra
Senior Vice President
Turtle & Hughes Inc.



Anastasia M. Song
Senior Advisor
Arctas Capital Group



David S. Steiner
Chairman
Steiner Equities Group, LLC

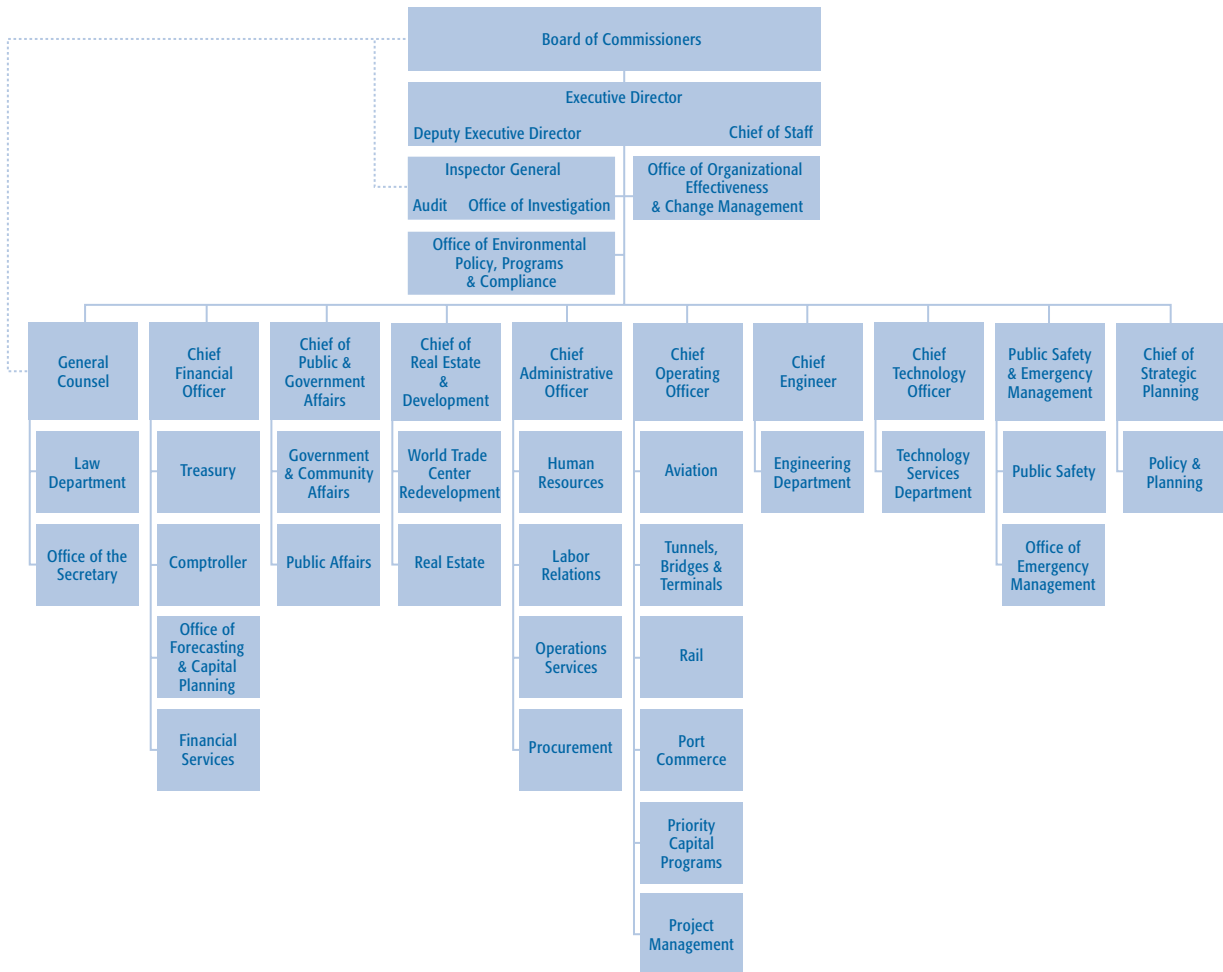


Kenneth J. Ringler Jr.
Executive Director



James P. Fox
Deputy Executive Director

Organization Chart



Officers and Directors

Executive Director
 Deputy Executive Director
 Chief of Staff
 Audit
 Aviation
 Chief Administrative Officer
 Chief Engineer
 Chief Financial Officer
 Chief Operating Officer
 Chief of Public & Government Affairs
 Chief of Real Estate & Development
 Chief of Strategic Planning
 Chief Technology Officer
 Comptroller
 Financial Services
 General Counsel
 Government & Community Affairs
 Human Resources
 Inspector General
 Labor Relations

Kenneth J. Ringler Jr.
James P. Fox
Edmond F. Schorno
John D. Brill
William R. DeCota
Louis J. LaCapra
Francis J. Lombardi
A. Paul Blanco
Ernesto L. Butcher
Michael A. Petralia
Michael B. Francois
Robert F. Lurie
Gregory G. Burnham
Michael G. Fabiano
Edward L. Jackson
Darrell Buchbinder
Arthur J. Cifelli
Michael G. Massiah
Robert E. Van Etten
Paul D. Segalini

Office of Emergency Management
 Office of Environmental Policy,
 Programs & Compliance
 Office of Forecasting & Capital Planning
 Office of Investigation
 Office of Organizational Effectiveness
 and Change Management
 Office of the Secretary
 Operations Services
 Policy & Planning
 Port Commerce
 Priority Capital Programs
 Procurement
 Project Management
 Public Affairs
 Public Safety
 Rail
 Real Estate
 Treasury
 Tunnels, Bridges & Terminals
 World Trade Center Redevelopment

John P. Paczkowski
Christopher Zeppie
Douglas L. Smith
Michael Nestor
Michael G. Massiah
Karen E. Eastman
Alan I. Rhome
Cruz C. Russell
Richard M. Larrabee
Anthony G. Cracchiolo
Cecile O. Pace
John J. Drobny
Kayla M. Bergeron
Samuel J. Plumeri Jr.
Michael P. DePallo
Francis A. DiMola
Anne Marie Mulligan
Victoria Cross Kelly
James T. Connors

As of March 13, 2005

Letter from the Executive Director

Having set a strong foundation with the restoration of essential PATH service to Lower Manhattan and progressing projects critical to the bistate region's future, The Port Authority of New York and New Jersey continued its vital role to energize the region's economy, delivering the transportation services and infrastructure that the people of New York and New Jersey depend on daily.

We developed innovative solutions, challenging a long-established norm to successfully change outbound traffic patterns at the Lincoln Tunnel, planning forward-thinking developments of the entire ExpressRailSM system to establish dedicated rail facilities for each of the port's major container terminals, and developing SmartLinkSM, the Port Authority's program designed to help regional transit agencies prepare for future use of smart card technology.

AirTrain JFKSM celebrated its first year of providing an alternative to mass transit for nine million customers while AirTrain NewarkSM recorded impressive gains in ridership. Speed limits were safely raised at *E-ZPass*SM toll plazas to ease travel. And new long-distance service was welcomed at Newark Liberty International and John F. Kennedy International airports.

With security topping Port Authority priorities, the agency continued to invest in this vital initiative, progressing a multimillion-dollar capital program that further fortifies existing systems, initiating new, specialized training for our Police and introducing a pilot bus inspection program.

We strengthened the region's transportation network, unveiling a spectacular design for the permanent World Trade Center Transportation Hub, beginning an historic investment to replace PATH's entire fleet of cars, initiating a visionary process to modernize the Goethals Bridge, and anticipating passenger growth by preparing Kennedy International Airport for the next generation of larger, quieter aircraft.

We also addressed escalations in security and other operating costs by forming a team of agency employees who explored ways to streamline operations and curtail spending. This initiative will continue to identify reductions in Port Authority spending in areas that will cause the least inconvenience to customers, yet will allow us to operate more efficiently.

I am proud to build on the legacy of Joe Seymour, my predecessor and friend, who led the Port Authority through difficult times following the September 11, 2001, terrorist attacks and left the agency stronger and more assured of its regional significance. I look forward to working with Chairman Coscia, Vice Chairman Gargano, the Board of Commissioners and the many talented staff of the Port Authority in order to provide the best public service the people of this region deserve.

Sincerely,



Kenneth J. Ringler Jr.
Executive Director

April 27, 2005

[mō•mĕn•təm] *n.*

Inspired by our vision for the region, we laid down a strong foundation in 2003. In 2004, we continued to forge ahead in our unwavering commitment to strengthening the economic well-being of our community. The success of our region's vital transportation and trade links – bridges, tunnels, bus terminals, airports, PATH and seaport – will carry us forward with a more successful today and a stronger tomorrow.

Momentum

Our five core commitments drive everything we do throughout the region – they are the building blocks upon which all progress in 2004 was made.

*Advancing
Economic Growth*

*Leading with
Innovative Thinking*

*Forging Partnerships
within the Region*

*Delivering Improved
Customer Service*

*Strengthening Our Bistate
Transportation Network*

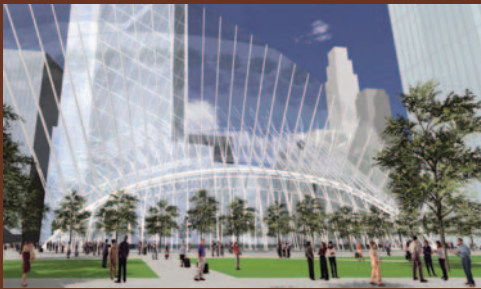




Our transportation network influences not only how people move throughout the region, but how we grow the region's economies and communities as well. While under our stewardship, the three major airports have been enduring – and soaring – sources of strength for our local economies. And, with successful growth at our seaport and continued achievements in Lower Manhattan, we have further strengthened the competitive advantage of this region in the global marketplace.

Continuing Accomplishments

- In 2004, passenger traffic at our airports doubled the growth found at other airports throughout the country – a testament to a rebounding post-September 11th economy.
- Vehicular traffic at our bridges and tunnels reached record highs in 2004.
- Plans currently under way for the permanent World Trade Center Transportation Hub – expected to break ground in summer 2005 – underscore our commitment to revitalizing Lower Manhattan.
- Our seaport continues to drive commerce and business by meeting cargo capacity needs through major redevelopment successes such as ExpressRail.SM



Advancing

economic growth

Through our steadfast vision, we continued to drive commerce and make capital improvements to ensure future economic vitality in the region.



Fares

One Trip Class	One Trip Class
1st Class	\$15.00
2nd Class	\$10.00
3rd Class	\$7.00
4th Class	\$5.00
5th Class	\$3.00
6th Class	\$2.00
7th Class	\$1.50
8th Class	\$1.00
9th Class	\$0.75
10th Class	\$0.50

11111 PATRICK



For more than 80 years, we have been planning for the future: our history of innovations has been the energy and pride behind much of our work. This past year has been no exception. Whether it's new technology to make connections seamless, improvements that will enable us to handle larger cargo volumes or advancements that will allow us to continue being good neighbors and stewards, we are committed to finding the best ways to serve people in this region today, and tomorrow.

Continuing Accomplishments

- Our innovative SmartLinkSM card will synchronize fare collection across the region's multiple transit systems.
- An expanded, more effective ExpressRailSM system and continued harbor dredging help us meet the future trade needs of this region.
- Infrastructure improvements under way at John F. Kennedy International Airport will allow us to accommodate quieter, more fuel-efficient aircraft.



Leading

with innovative thinking

Calling upon decades of unparalleled experience and insight, we sought innovative solutions that moved the region forward.



To keep the region moving forward, we cannot work alone. Through thoughtful collaboration and key relationships, we are able to maximize resources and better plan for the future. This year, coordinated initiatives at our seaport, The World Trade Center site and several of our tunnels and bridges drove the region in a positive direction.

Continuing Accomplishments

- A partnership with the New York City Economic Development Corporation will help us restore railroad service to Howland Hook Marine Terminal and other areas of Staten Island.
- On July 4th, we joined New York City, New York and New Jersey state officials, community leaders and September 11th family members to lay the cornerstone for the Freedom Tower.
- We have committed to accomplishing record channel-deepening projects – a goal that will be realized with the help of the U.S. Army Corps of Engineers.



Forging

partnerships within the region

We worked tirelessly with federal, state and community entities who share our vision to bring about a better tomorrow – together we shape an inspired future for the region.

You are Viewing an Archived Copy from the New Jersey State Library



Efforts to make traveling as convenient as possible – world-class services at our airports and enhanced security across our transportation network – have been priorities over the last year. While we continue to look at the overall economic future of this region, we also focus on the day-to-day satisfaction and safety of everyone who uses our facilities and services.

Continuing Accomplishments

- We are enhancing security across our facilities with a five-year, \$500 million capital plan.
- New 25-mph *E-ZPass*SM lanes at the Goethals, Bayonne and George Washington bridges save travelers significant time.
- Newark Liberty International Airport now hosts the world's longest non-stop regular service.
- New traffic patterns on the New York side of the Lincoln Tunnel ease traffic congestion.



Delivering

improved customer service

We continued to be fully committed to serving our customers who live, work and travel in this region by making advancements to the safety and efficiency of the services we provide.



SPEED LIMIT
45 M.P.H.
DRIVE SAFELY

LANE CLOSED

MERGE LEFT

In our renewed commitment to strengthening our region's bistate transportation infrastructure, we developed a ten-year strategic plan that will not only guide us in addressing the region's needs in the 21st century, it will also fuel long-term thinking, planning and investing. This framework builds on our tradition of forward-thinking programs and calls for expanded collaboration with public and private partners on new planning and financial relationships. Continuing infrastructure improvements enhance our customers' experience and ensure readiness for future transportation growth.

Continuing Accomplishments

- We launched an initiative for the Goethals Bridge that will help us determine the best way to modernize this vital crossing.
- We partnered with jetBlue Airways to build a new passenger terminal at John F. Kennedy International that will preserve the airport's distinguished past by connecting to the historic Terminal 5, designed by Eero Saarinen.
- The largest replacement of railcars in PATH's history – more than \$800 million – is underway to bring the fleet to world-class status.



Strengthening

our bistate transportation network

Understanding the vital importance of moving people and goods efficiently now and in the future, we released a strategic planning framework to improve the region's transportation infrastructure.



Since the November 2003 restoration of PATH service to The World Trade Center site, approximately 36,000 travelers use the temporary station each weekday, well above initial projections of 24,000 passengers.



Year in Review

The Port Authority of New York and New Jersey began 2004 with remarkable momentum, powered by the previous year's achievements, and sustained throughout the year by critical investments and partnerships. Building on the Port Authority's longstanding tradition of forward-thinking programs, we focused on initiatives that will prepare the region for further renewal and growth. The steady leadership of New York Governor George E. Pataki, former New Jersey Governor James E. McGreevey, Acting Governor Richard J. Codey and members of the Port Authority's Board of Commissioners has been a dynamic force shaping our progress and continuing successes.

With the adoption of its annual budget, the Port Authority prepared a ten-year strategic capital plan to serve as a framework for meeting the bistate region's transportation and economic needs in the 21st century. The framework calls for collaborative planning and financial relationships with public and private entities to modernize the region's transportation networks. The plan includes projects that may be developed, carefully evaluated with other regional agencies and with the governors of New York and New Jersey, and incorporated into future budgets when appropriate. We will reach out to other regional leaders to garner support for bistate initiatives, guided by the principle that our shared priorities are interconnected and interdependent.

In 2004, the Port Authority consistently met, and in some cases surpassed, financial goals, overcoming fiscal challenges presented by the marketplace. Since September 11, 2001, costs for security, rent payments to municipalities and utilities have risen dramatically. Despite this upsurge, the Port Authority continued to fulfill its mandate without increasing PATH fares or tolls at the agency's bridges and tunnels. To improve the agency's efficiency, the Port Authority formed an employee team to develop ways to streamline operations and curtail costs. Based on our 2004 efforts, the initiative has already generated approximately \$26 million in recurring annual savings beginning in 2005. We expect to substantially increase this total as we move to develop and implement additional recommendations during 2005.

In addition, the agency successfully reached agreements within budgetary parameters with seven unions representing Port Authority and PATH employees. This development, along with the new savings initiatives, are solid catalysts for ongoing financial enhancements.

Advancing Economic Growth Through Network-wide Investments

Our bistate transportation network continues to thrive as a result of our uncompromising efforts to facilitate growth and restore economic vitality.

Renewed growth in traffic was seen at all of our facilities, led by our strong airport network, which set a new record. Overall, passenger traffic grew 12.1 percent at John F. Kennedy International,



Newark Liberty International and LaGuardia airports, nearly twice as fast as airports in the rest of the nation. Collectively, the three major airports carried 93.8 million passengers, achieving a pre-September 11 level one year earlier than anticipated. In fact, overall domestic passenger levels were more than 3 percent higher than before September 11, while international travel grew by 14 percent.

John F. Kennedy International Airport – which led the nation’s top 25 airports in 2003 with 8 percent growth in passenger traffic – continued its upward trend with an 18 percent increase in 2004, making this airport the fastest-growing in our region. Kennedy accommodated 37.5 million passengers in 2004, exceeding the pre-September 11 annual levels of 32.8 million passengers. With the additions of jetBlue and Delta Song, domestic travel increased significantly: passenger activity rose 22 percent, to 20.1 million. International traffic at Kennedy also grew by nearly 14 percent, to 17.4 million, benefiting from Emirates and other new carriers.

At Newark Liberty International Airport, Continental’s service expansion fueled considerable growth in international traffic. The airport also welcomed several new domestic carriers, including Independence Air. International traffic rose by 15.4 percent over 2003 and 4.1 percent over pre-September 11 levels. Meanwhile, domestic passenger travel rose by 5.8 percent over 2003 levels. Overall, almost 32 million passengers passed through Newark Liberty, an increase of 8.3 percent over 2003.



Renewed passenger traffic at our three major airports
nearly doubled the traffic achieved at the rest of the nation’s airports, achieving a pre-September 11th level one year earlier than anticipated.

LaGuardia Airport served 24.4 million passengers, an increase of 8.6 percent. Domestic traffic rose 7.9 percent, while international traffic – approximately 5.3 percent of the airport’s total traffic – grew 23.7 percent. New domestic entrants at the airport included USAir Express, jetBlue and several others, while three new carriers began international service on North American routes.

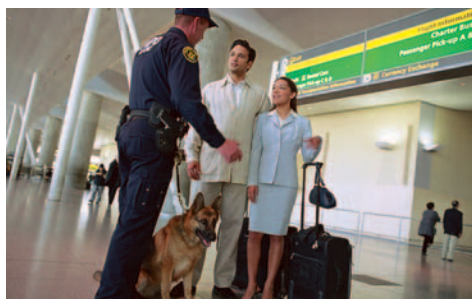
One year after its December 2003 launch, AirTrain JFKSM had provided nearly nine million passengers with a convenient, affordable mass transit alternative for traveling to the airport. Developed as part of Kennedy’s \$9.4 billion redevelopment program, AirTrain JFK connects with the Metropolitan Transportation Authority’s (MTA) Long Island Rail Road and MTA New York City Transit subway lines and local buses. AirTrain JFK also provides free connections on the airport.

Now in its third year, AirTrain NewarkSM provides an average of 4,000 daily passengers with a fast, convenient rail link from the airport to connections on NJ TRANSIT[®] and Amtrak[®] trains on the Northeast Corridor Rail Line. In addition, another 30,000 daily riders use the free on-airport portion of the service. AirTrain Newark is an integral part of the airport’s \$3.8 billion redevelopment plan.

In November, the Port Authority and the City of New York finalized an agreement to extend the Port Authority’s lease of Kennedy and LaGuardia airports through 2050. The agreement governs the Port Authority’s continued management and operation of the airports and allows the agency to effectively plan long-term investments. In connection with the agreement, the Port Authority allocated \$60 million to study the feasibility of a direct rail connection from Lower Manhattan to Kennedy and \$30 million to study extending PATH to Newark Liberty International. If the airport access projects are determined to be viable, the Port Authority would include funding for them in its strategic capital plan – the extension to Kennedy at \$500 million and an equivalent amount for improved access to Newark Liberty.

PATH made substantial gains as a direct result of services restored in 2003. In a strong indicator that Lower Manhattan continues to rebound from the September 11th attacks, ridership at the temporary World Trade Center PATH Station in New York, the Exchange Place Station in Jersey City, N.J. and other New Jersey stations grew significantly in 2004, the first full year of restored service to Lower Manhattan.

At Exchange Place, ridership doubled since the station’s reopening in June 2003, growing from an average of 5,600 weekday riders during the first month of operation to the current weekday ridership of nearly 11,000. As riders shifted back to PATH for more direct travel to downtown, significant increases were seen at Newark (21.1 percent), Harrison (15.8 percent) and Hoboken (14 percent) stations. Overall, PATH ridership soared with approximately 57.7 million passengers using the system, a 20.5 percent increase over 2003’s volume.





Traffic at our bridges and tunnels reached a new record high of 126.5 million vehicles, a 2.2 percent increase over 2003 eastbound traffic levels – another sign of recovery in the regional economy.



Growth was recorded at our vehicular transportation facilities. Traffic at the Port Authority's bridges and tunnels reached a new record high of 126.5 million vehicles, a 2.2 percent increase over 2003 eastbound traffic levels. The upswing occurred in all vehicle types – another sign of recovery in the regional economy.

At our seaport, cargo volume grew by more than 12 percent, led by booming trade with Asia, especially China. A total of 3,147,204 loaded 20-foot-equivalent container units moved through the port, with exports rising by 10.3 percent and imports increasing by 12.2 percent, due in part to the expansion of our inland access capabilities.

With the launch of the first phase of ExpressRailSM Elizabeth, a new intermodal rail terminal at the Elizabeth-Port Authority Marine Terminal, capacity for these shipments through the port increased significantly. As a result, the terminal's on-dock rail business set a new record with 283,529 containers handled, a 22 percent increase over 2003.

The Port Authority's airports also serve the world's largest air cargo market. Together, they handled 2.8 million tons of air cargo, a 2.7 percent increase over 2003. Nearly a quarter of all air cargo imported to the U.S. continues to be handled by Kennedy and Newark Liberty.

Also bolstering the region's economy were our contract awards, which totaled more than \$1.17 billion. Activity was led by commodities and services at \$612 million, followed by construction with more than \$389 million, and professional services at \$177 million.

Leading with Innovative Thinking

Through new technologies and a progressive focus, we developed programs over the last year that better prepare our transportation network for the future.

To integrate the region's mass transit systems, the Port Authority prepared to field test SmartLinkSM, a new smart card-based fare media designed to help regional transit agencies prepare for future use of smart card technology. This new fare collection system benefits customers and system operators alike, increasing efficiency and reliability. Users will be able to automatically replenish their cards from credit or debit card accounts. SmartLink will begin a pilot phase by the end of 2005, with continuous rollouts to all riders occurring into 2006. Eventually, the SmartLink card will be accepted on mass transit throughout the region. Plans call for an investment of nearly \$2 million to enable the smart cards to be accepted on AirTrain JFK and AirTrain Newark, a convenience that will improve travelers' ability to transfer between transit systems when traveling to the airports.

The Port Authority – in partnership with other regional transit agencies – also developed a smart card standard that was adopted by the American National Standards Institute and the



American Public Transportation Agency. This standard, a breakthrough initiative, will be used as the framework for future development of smart card programs in North America.

At the Goethals Bridge, the Port Authority sponsored a comprehensive environmental review for the development of a recommended alternative to upgrade and modernize the more than 75-year-old structure. In a three-year, \$47 million program, the Port Authority began work with the United States Coast Guard, the lead federal agency, on a public process that will include the preparation of an environmental impact statement required by the National Environmental Policy Act. The preferred alternative selected at the conclusion of the process will ensure that the Goethals Bridge continues to serve as a vital link for decades to come.

In the New York-New Jersey Harbor, we made innovative preparations for growing cargo demand. The Port Authority and U.S. Army Corps of Engineers launched a \$1.6 billion project to deepen certain channels to 50 feet, allowing the port to accommodate the next generation of larger cargo vessels, which require deep water to operate. The Port Authority's steadfast commitment to maximizing environmental benefits is exemplified through our channel-deepening work. The dredged material will be used to cap landfills, remediate brownfield sites and create artificial reefs.

Already, the Army Corps has completed a project to deepen to 45 feet the Kill van Kull, Newark Bay and Elizabeth Channels, which provide access to the Port Newark and the Elizabeth-Port



The introduction of the world's largest aircraft at Kennedy,
the double-deck, 555-seat Airbus 380, will help accommodate passenger growth with larger, more efficient aircraft in lieu of adding more flights to the region's skies.

Authority Marine terminals in New Jersey. The ambitious deepening project, funded by the Port Authority and the federal government, was completed earlier than originally forecast and came in under budget.

On land, the first phase of the new ExpressRail Elizabeth intermodal rail terminal, developed by the Port Authority, began operating at the Elizabeth-Port Authority Marine Terminal. Since the opening of ExpressRail Elizabeth in 1996, rail volumes in the port facilities have grown annually at an average of 17 percent, requiring additional capacity.

ExpressRail Elizabeth is part of a comprehensive \$600 million program to develop the entire ExpressRail system, which will establish dedicated rail facilities for each of the port's major container terminals. The new system will be comprised of ExpressRail Newark, which will serve the Port Newark Container Terminal; ExpressRail Staten Island at Howland Hook Marine Terminal; and the Corbin Street Intermodal Support Facility, just west of Port Newark/Elizabeth.

To prepare Kennedy for the next generation of larger, more efficient aircraft, the Port Authority planned improvements, including strengthening taxiway bridges and widening runways, to ready the airport's infrastructure for the double-deck, 555-seat Airbus 380, the largest aircraft in the world. The \$179 million project will help accommodate passenger growth with larger aircraft in lieu of adding more flights to the region's skies. Three airlines currently operating at Kennedy have placed orders for A380s and have formally expressed their intention to operate the aircraft.

Beyond technological innovations implemented at our facilities, we also found innovative ways to maximize our community outreach. For awarding contracts to small, minority-owned and women-owned businesses, we received the prestigious 2004 Award for Excellence from the New Jersey Business & Industry Association. Through these programs, more than 1,600 regional jobs have been created, generating \$313 million in regional economic activity.

Forging Partnerships Within the Region and Through our Facilities

The Port Authority's capital program continues the agency's commitment to pursuing coordinated capital investments with other agencies, leveraging the work that can be accomplished through regional collaboration. The Port Authority's ten-year strategic capital plan calls for expanding interagency relationships on project development and financing to support forecasted growth in commuter and freight activity across the metropolitan area.

The Port Authority agreed to provide critical financial support for complementary bistate initiatives at Penn Station New York. The \$20 million funding – \$10 million for NJ TRANSIT and \$10 million for the Moynihan Station Development Corporation – will go towards engineering and design of an extension of the West End Concourse at Penn Station to a new connection to all tracks and





ExpressRail Elizabeth is part of a \$600 million program to develop the entire ExpressRail system, which will establish dedicated rail facilities for each of the port's major container terminals.



platforms. Funding will also be provided for expanded connections from Penn Station across Eighth Avenue to the Farley Post Office Building, which will be redeveloped into the Moynihan Station, a 21st-century gateway to New York. The planned station would relieve current rush-hour congestion at Penn Station and would serve passengers connecting to and from AirTrain JFK and AirTrain Newark.

At our airports, we are working with local community interests and federal agencies to be good neighbors. In connection with the airport lease extension, we committed \$100 million for capital projects in Queens, strengthening our ties to local communities. The Port Authority also approved a record \$45 million for the long-standing soundproofing program to create quieter classrooms for children whose schools are located near the airports. Thirty-two schools took part in the 2004 program, which is jointly administered by the Port Authority and the Federal Aviation Administration under the Federal Airport Improvement Program.

The Port Authority is also working with the New York City Economic Development Corporation (NYCEDC) to restore and upgrade portions of the Staten Island Railroad to bring intermodal rail service to Howland Hook Marine Terminal on Staten Island, N.Y. The Port Authority is constructing ExpressRail Staten Island, a 39-acre intermodal facility on the "Port Ivory" tract, adjacent to Howland Hook, while NYCEDC is reconstructing the Arlington Yard, the Arthur Kill Lift Bridge and other connecting track lines. The Port Authority is also constructing a new rail connection between the Staten Island Railroad and Conrail's Chemical Coast Line in Elizabeth, N.J. Together, these projects will provide freight rail service to Howland Hook and other parts of Staten Island for the first time in more than a decade.

The Port Authority and NYCEDC agreed to a lease for Pier 12 at the Brooklyn-Port Authority Marine Terminal and Pier 11 at the Red Hook Container Terminal for the development of a cruise terminal facility. With the cruise industry continuing to boom in New York City, it is anticipated that 50 ships carrying almost 68,000 passengers could use the Brooklyn facility. Development of the facility on Piers 11 and 12 will generate an additional 300 jobs in the local industry.

Working with the U.S. Army Corps of Engineers, the Port Authority finalized an agreement that outlines funding commitments and a timeline for channel-deepening projects, whose construction cost will be shared by the Port Authority and the federal government. The deepening is scheduled for completion in 2014, but Port Authority and Army Corps officials have pledged to try to accelerate this timetable.

Perhaps the most inspirational partnership in our time has been the combined efforts to revitalize and immortalize The World Trade Center (WTC) site. On July 4th, the 228th anniversary of the nation's Independence, Governor Pataki, former Governor McGreevey and New York City Mayor Michael R.



Bloomberg laid the Freedom Tower's cornerstone in the northwest corner of the site. The inscription on the cornerstone reads, "To honor and remember those who lost their lives on September 11, 2001 and as a tribute to the enduring spirit of freedom – July Fourth, 2004." The groundbreaking ceremony marked the start of construction on what will be – at 1,776 feet – the tallest building in the U.S., a structure designed to reclaim New York City's skyline. The tower will contain 2.6 million square feet of office space on 72 occupied floors. Steel will begin rising in 2006 with initial occupancy scheduled for 2008-2009.

As the new tower takes form, the Port Authority will continue to reach out to local groups and form partnerships with key agencies. A WTC Redevelopment Agreement was negotiated with the City of New York to establish parameters of the WTC Site Master Plan, including specific street level dimensions for The World Trade Center Transportation Hub, open space, truck and car access, building height guidelines and commercial design guidelines. The Port Authority has also begun a process to identify a partner to work with the agency on retail development at the WTC site.

Delivering Improved Customer Service

Protecting the public at its facilities remains the Port Authority's top priority. We're committed to making our facilities and services as accommodating and secure as possible.



Implementation of new, higher-speed toll lanes

improved travel time for customers of E-ZPass,SM who make up 70 percent of all tunnel and bridge users.

To achieve this goal, we are currently implementing a five-year, \$500 million plan to reinforce existing security. In addition, more than 300 new Port Authority police officers have been hired since September 11th. Recent security initiatives include training of a Special Operations Division in biohazards, radiation detection and hazardous materials. Initiatives also include a pilot bus inspection program conducted by Port Authority Police in conjunction with New Jersey State Police at the New Jersey entrance to the Lincoln Tunnel's Exclusive Bus Lane.

We are also working to enhance customers' experience by making improvements in access to and from our facilities. In a low-cost solution that challenged a long-established norm, changes made in outbound traffic patterns at the Lincoln Tunnel alleviated traffic congestion on the Manhattan streets around the tunnel. The new pattern – implemented in late 2003 during the weekday evening travel peak – re-routed vehicles to dedicated roadways leading to the tunnel. A 2004 assessment showed that the modifications, devised in cooperation with New York City's Police Department and Department of Transportation, directed vehicles to the tunnel more quickly.

At the same time, implementation of new, higher-speed toll lanes improved travel time for customers of *E-ZPass*SM who make up 70 percent of all tunnel and bridge users. Introduced in 2003 at the Outerbridge Crossing, the 25-mph toll lanes were expanded in 2004 to the George Washington's Palisades Interstate Parkway and Lower Level toll plazas, as well as the Goethals and Bayonne bridges. In another time-saving improvement, "*E-ZPass Only*" was implemented during the overnight hours at the George Washington Bridge's Lower Level in order to diminish waiting time at the start of the morning rush. And, in its first full year of operation at all three regional airports, *E-ZPass Plus*SM emerged as a popular payment method with one-third of all parking customers using it to pay for parking.

Meanwhile, our international airports enhanced their world-class transportation facilities with non-stop services. Newark Liberty became home to new services, including Continental's new service to Beijing and the world's longest non-stop flight with Singapore Airlines' daily non-stop service. At Kennedy, Cathay Pacific launched the first non-stop service from Hong Kong to the airport, reducing travel time by almost three and a half hours.

Strengthening Our Bistate Transportation Network

The many points of our trade and transportation network – PATH, trans-Hudson ferry service, The World Trade Center site, our bridges, bus terminals and tunnels, airports and seaport – will be improved through significant initiatives.

In an historic investment that demonstrates the Port Authority's commitment to enhancing the region's transportation system, we initiated a crucial project to replace PATH's entire fleet of





Traveling to and within our airports is becoming more convenient every day with successful innovations like AirTrain JFK and proposals for new concourses at LaGuardia.



340 cars before the end of the decade. The Port Authority expects to have the first of the new cars in service in late 2008. The replacement is part of a PATH modernization program that also includes car maintenance equipment and preliminary work on a new signal system. The \$809 million program is one of the largest single investments ever made by the bistate agency.

History also continues to be made in Lower Manhattan. The exemplary public-private partnerships forged for the rebuilding of the WTC in the aftermath of the September 11th terrorist attacks resulted in a spectacular master plan – including a world-class memorial and diverse retail, commercial and cultural facilities – that features The World Trade Center Transportation Hub, a state-of-the-art intermodal facility that will replace the temporary station currently serving PATH commuters.

A visionary design, created by world-renowned architect Santiago Calatrava, was unveiled for the hub – a winged structure that was universally received as an inspiration. To be built at Church and Fulton streets, the hub will form an underground connection between the World Financial Center and the MTA's proposed Fulton Street Transit Center. Through the hub, pedestrians will have access to PATH trains, the Hudson River ferries, up to 14 subway lines and a variety of retail stores.

At Kennedy, a joint \$875 million investment by the Port Authority and jetBlue Airways will result in a new 640,000-square-foot passenger terminal in the central terminal area that connects to the TWA Flight Center, preserving this landmark terminal designed by the renowned architect Eero Saarinen. The investment will include a new connecting bridge to AirTrain JFK and a parking garage. Kennedy's fastest-growing airline, jetBlue, will operate the terminal under a lease of up to 34 years. Construction is expected to begin in 2005.

With forecasts indicating that 45 million passengers will use Newark Liberty by 2021, a \$280 million program was authorized to modernize Terminal B and related facilities with expanded and additional ticketing areas, expanded passenger screening points and a new domestic baggage claim area. Planning and design are expected to begin in 2005.

We also authorized a \$15 million planning study to meet LaGuardia Airport's forecasted growth, expected to increase to more than 30 million passengers by 2021. Proposed improvements would include new concourses, parking garages and enhanced customer services. To date, the Port Authority and its private partners have invested more than \$830 million to expand and modernize the airport's Central Terminal Building and to improve roadways, runways and taxiways.

Many local entities are concerned with readying the bistate region to accommodate long-term mass transit ridership growth – particularly in Manhattan's most highly accessed areas. A transportation planning effort led by NJ TRANSIT with the Port Authority's participation, known as Access to the Region's Core (ARC), is developing long-term solutions to transportation and



access issues. ARC would add new trans-Hudson rail capacity by constructing two additional tracks between Secaucus Junction in the New Jersey Meadowlands and New York's Pennsylvania Station, including the first new tunnel under the Hudson River in more than 50 years.

These long-term initiatives at our facilities, in combination with innovative thinking, strong partnerships and economic investments, are part of both the visible and underlying efforts we make every day to deliver on our commitments to customer service, growth and progress. By building on each of these commitments, we are helping to maintain the region's forward momentum.



The single largest investment in PATH history has been committed to enhance safety and improve operational flexibility and reliability with an upgraded rail fleet.



***To The Board of Commissioners of
The Port Authority of New York and New Jersey***

The Consolidated Financial Statements of The Port Authority of New York and New Jersey (including its wholly-owned corporate entities) as of and for the years ended December 31, 2004 and December 31, 2003, are enclosed. Responsibility for both the accuracy of the data and the completeness and fairness of the presentation in the Consolidated Financial Statements rests with management of the Port Authority. Management's Discussion and Analysis ("MD&A") of the Port Authority's financial performance and activity provides a narrative introduction, overview, and analysis to accompany the Consolidated Financial Statements and is supplemental information that is required by accounting principles generally accepted in the United States of America ("GAAP"). Schedules A, B, and C have been prepared pursuant to the requirements of law and Port Authority bond resolutions and are not intended to be a presentation in conformity with GAAP. In the Statistical and Other Supplemental Information Section, Schedules D, E, F, and G present select supplementary information for purposes of additional analysis. To the best of my knowledge and belief, such financial and other information set forth in the Consolidated Financial Statements is accurate in all material respects and is reported in a manner designed to present fairly the Port Authority's net assets, changes in net assets, and cash flows in conformity with GAAP.

On the basis that the cost of internal controls should not outweigh their benefits, the Port Authority has established a comprehensive framework of internal controls to protect its assets from loss, theft, or misuse, and to provide reasonable (rather than absolute) assurance regarding the reliability of financial reporting and the preparation of the Consolidated Financial Statements in accordance with GAAP.

A firm of independent auditors is retained each year to conduct an audit of the Consolidated Financial Statements in accordance with auditing standards generally accepted in the United States of America. The goal of the independent audit is to provide reasonable assurance that the Consolidated Financial Statements are free of material misstatement. The audit includes an examination, on a test basis, of the evidence supporting the amounts and disclosures in the Consolidated Financial Statements, an assessment of the accounting principles used and significant estimates made by management, as well as the overall presentation of the Consolidated Financial Statements. In planning and performing their audit, the independent auditors gave consideration to the Port Authority's comprehensive framework of internal controls in order to determine auditing procedures for the purpose of expressing an opinion on the Consolidated Financial Statements. The independent auditors' report is presented as the first component in the financial section following this letter.

This letter of transmittal is designed to complement the MD&A and should be read in conjunction with it.

Profile of the Port Authority

The Port Authority is a municipal corporate instrumentality and political subdivision of the States of New York and New Jersey, which was established in 1921 to provide transportation, terminal, and other facilities of commerce within the Port District, an area of about 1,500 square miles in both States centering about New York Harbor. The Port Authority raises the funds necessary for the improvement, construction, or acquisition of its facilities generally upon the basis of its own credit. It has neither the power to pledge the credit of either State or any municipality nor to levy taxes or assessments.

The Port Authority maintains an infrastructure of financial systems to record the financial results of operations and provide an audit trail to be used in a review of accountability.

The financial planning process integrates an annual budget process with multi-year forecasting projections. Through the budget process, staff identifies strategic, financial and operational issues that affect resource allocations; sets forth an expenditure plan for the year that balances priorities across all agency lines of operation; and provides alternate financial scenarios of proposed operating and financial arrangements and their impact on the agency's financial position. Each new budget is separately considered and approved by the Board of Commissioners, although such approval does not in itself authorize specific expenditures, which are authorized from time to time by, or as contemplated by, other specific actions of the Board of Commissioners.

The approved budget becomes a mechanism that facilitates the systematic review of program expenditures to ensure that they are made consistent with statutory, contractual, and other commitments of the agency, the policies and financial decisions of the Board of Commissioners and the requirements of the By-Laws of the Port Authority. Forecasting models are used to assess the agency's projected long-range financial condition; determine the financial feasibility of future capital investment; and perform financial tests to measure fiscal risk and to ensure the organization's integrity in the credit markets. This comprehensive approach to planning, budgeting and forecasting enables the agency to identify, track and take corrective action with respect to the funding requirements needed to deliver the projects and services that the Port Authority provides.

Regional Economic Condition and Outlook

The New York and New Jersey regional economy enters 2005 with excellent momentum. The region is both a contributor to and a beneficiary of a much-improved national economy. The U.S. Gross Domestic Product is expected to finish 2004 with growth of 4.4 percent, the fastest economic growth since 1999. The national economy added more than 2.2 million jobs in 2004 and has now recovered all of the jobs lost between 2001 and 2003. Equity markets closed the year with positive gains. While the Dow Jones Industrial Average increased only 3.1 percent for the year, the S&P 500 Index gained 9.0 percent in value and the NASDAQ Composite was up 8.6 percent. In 2004, the daily average value of stocks traded on the New York Stock Exchange was \$46.1 billion, up nearly 20 percent over 2003.

The New York and New Jersey region added an estimated 23,000 new jobs, a growth rate of 0.3 percent. The marked improvement in the economy of New York City combined with growth in the rest of the region ended the region's three-year decline in employment. This turnaround

was evidenced by significant improvements in labor market conditions as the regional unemployment rate fell from 6.6 percent to 5.7 percent. In New York City, the unemployment rate declined from an average of 8.4 to 7.1 percent. In Northern NJ, the unemployment rate fell from 6.0 percent to 4.9 percent. The unemployment rate in the New York Suburbs remained stable at 4.1 percent.

New York City's economy was aided by the continued growth in tourism, especially the resurgent international visitor. New York City received an estimated 39.6 million visitors in 2004, a 4.6 percent increase over 2003. International visitors returned in large numbers with an estimated total of 5.3 million, up from 4.8 million in 2003. Hotel occupancy rates averaged 83.6 percent, up from 76.4 percent in 2003. The increased demand spurred an average rise in hotel prices of 10 percent.

Changes in Port Authority activity levels reflected these improved economic conditions. Air passenger traffic set a new record of 93.9 million passengers in 2004, an increase of more than 12 percent. Air cargo volumes are up 2.7 percent, to 2.8 million tons. Port general cargo volumes reached 25.5 million metric tons, an increase of 8.2 percent over 2003 volumes. Eastbound vehicular volumes at the bridges and tunnels reached a new peak of 126.5 million vehicles, a 2.2 percent increase over 2003. PATH passenger volumes spiked by 20.5 percent to 57.7 million passenger trips.

While the outlook for 2005 is encouraging, there are areas of concern that merit careful monitoring for their impact on the regional economy. The depreciation of the dollar, while positive for tourism, could hurt this region disproportionately given its dependence on imported goods. The dollar has depreciated sharply against the euro, yen, and British pound. In 2004, the region imported \$177.6 billion of international goods while exporting \$80.8 billion, resulting in a trade deficit approaching \$100 billion. In the short-term at least, regional residents and businesses have little choice except to continue to rely on more expensive imports. This could have an effect on regional inflation rates, which are already almost a point higher than that of the nation. As the effects of the tax cuts, the booming housing markets and very accommodative monetary policy begin to wane, the U.S. economy is not expected to grow as quickly in 2005. The Federal Reserve raised rates five times in 2004, bringing the federal funds rate target to 2.25 percent. With core inflation at around 2.0 percent, real interest rates are still quite low, meaning that the Federal Reserve is likely to continue to raise the federal funds target in 2005 in orderly increments, bringing the rate by year end to 3.5 to 4.0 percent.

Certificate of Achievement

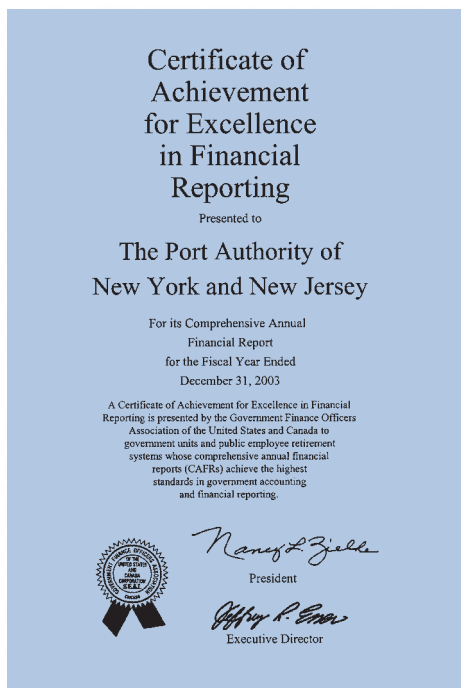
The Government Finance Officers Association of the United States and Canada (GFOA) awarded a Certificate of Achievement for Excellence in Financial Reporting to The Port Authority of New York and New Jersey for its Comprehensive Annual Financial Report for the fiscal year ended December 31, 2003. This was the twentieth consecutive year that the Port Authority had achieved this prestigious award. In order to be awarded a Certificate of Achievement, a government organization must publish an easily readable and efficiently organized comprehensive annual financial report. This report must satisfy both accounting principles generally accepted in the United States of America and applicable legal requirements.

A Certificate of Achievement is valid for a period of one year only. We believe that our current Comprehensive Annual Financial Report continues to meet the Certificate of Achievement Program's requirements, and we are submitting it to the GFOA to determine its eligibility for another certificate.

February 25, 2005



A. Paul Blanco
Chief Financial Officer



For the twentieth consecutive year, The Port Authority of New York and New Jersey was awarded the Certificate of Achievement for Excellence in Financial Reporting by the Government Finance Officers Association of the United States and Canada for its 2003 Comprehensive Annual Financial Report.

The Port Authority of New York and New Jersey
Annual Report for the Year Ended December 31, 2004

Prepared by the Comptroller's Department

Financials

Report of Independent Auditors



Deloitte & Touche LLP

Two World Financial Center
New York, NY 10281-1414
USA

INDEPENDENT AUDITORS' REPORT

Board of Commissioners
The Port Authority of New York and New Jersey

Tel: +1 212 436 2000
Fax: +1 212 436 5000
www.deloitte.com

We have audited the accompanying consolidated statements of net assets of The Port Authority of New York and New Jersey, as of December 31, 2004 and 2003, and the related consolidated statements of revenues, expenses, and changes in net assets and cash flows for the years then ended. We also audited the financial information included in Schedules A, B and C. These consolidated financial statements and schedules are the responsibility of the Port Authority's management. Our responsibility is to express an opinion on these financial statements and schedules based on our audits.

We conducted our audits in accordance with auditing standards generally accepted in the United States of America. Those standards require that we plan and perform the audit to obtain reasonable assurance about whether the financial statements and schedules are free of material misstatement. An audit includes examining, on a test basis, evidence supporting the amounts and disclosures in the financial statements and schedules. An audit also includes assessing the accounting principles used and significant estimates made by management, as well as evaluating the overall financial statement and schedule presentation. We believe that our audits provide a reasonable basis for our opinion.

In our opinion, the consolidated financial statements referred to above present fairly, in all material respects, the net assets of the Port Authority as of December 31, 2004 and 2003, and the changes in its net assets, and cash flows for the years then ended in conformity with accounting principles generally accepted in the United States of America.

The accompanying Schedules A, B, and C have been prepared pursuant to the requirements of law and Port Authority bond resolutions and are not intended to be a presentation in conformity with accounting principles generally accepted in the United States of America. However, in our opinion, Schedules A, B, and C present fairly, in all material respects, the assets and liabilities of the Port Authority at December 31, 2004 and 2003, and the revenues and reserves for the years then ended in conformity with the accounting principles described in Note A-4.

The "Management's Discussion and Analysis" is not a required part of the consolidated financial statements but is supplemental information required by the Governmental Accounting Standards Board. This supplemental information is the responsibility of the Port Authority's management. We have applied certain limited procedures, which consisted principally of inquiries of management of the Port Authority regarding the methods of measurement and presentation of this supplemental information. However, we did not audit such information and we do not express an opinion on it.

Our audits were conducted for the purpose of forming opinions on the consolidated financial statements and Schedules A, B, and C taken as a whole. The supplemental information presented in Schedules D, E, F and G is presented for purposes of additional analysis and is not a required part of the consolidated financial statements. This supplemental information is the responsibility of the Port Authority's management. The supplemental information presented in Schedules D, E, F, and G has been subjected to the auditing procedures applied by us in the audit of the consolidated financial statements and in our opinion, is fairly stated in all material respects in relation to the consolidated financial statements taken as a whole.

Deloitte & Touche LLP

February 25, 2005

Member of
Deloitte Touche Tohmatsu

Management's Discussion and Analysis

Year ended December 31, 2004

Introduction

The following discussion and analysis of the financial performance and activity of the Port Authority of New York and New Jersey and its wholly-owned corporate entities, Port Authority Trans-Hudson Corporation (PATH), the Newark Legal and Communications Center Urban Renewal Corporation, the New York and New Jersey Railroad Corporation, and WTC Retail LLC (all collectively referred to as the Port Authority), is intended to provide an introduction to and understanding of the consolidated financial statements of the Port Authority for the year ended December 31, 2004, with selected comparative information for the years ended December 31, 2003 and December 31, 2002. This section has been prepared by management of the Port Authority and should be read in conjunction with the financial statements and the notes thereto, which follow this section.

Financial Highlights

- The Port Authority continued to demonstrate financial resilience in 2004 with an increase in net assets of \$152 million.
- Gross operating revenues of \$2.9 billion increased by \$101 million in 2004 compared to 2003.
- Operating expenses, excluding depreciation and amortization, totaled \$2 billion in 2004, an increase of \$62 million from 2003.
- Throughout 2004, the Port Authority continued to advance its capital improvement program, reflecting the agency's on-going efforts in enhancing its facilities and its commitment to the continued growth and development of the region. Capital expenditures totaled approximately \$1.3 billion in 2004, while over \$1 billion in work in progress, including costs associated with regional programs, was transferred to completed construction.
- Depreciation and amortization expense, which continues to grow in conjunction with the significant capital investment being made by the Port Authority, increased by \$93 million in 2004 compared to 2003.
- In 2004, the Port Authority and the City of New York amended the lease agreement covering the Port Authority's operation of John F. Kennedy International Airport (JFK) and LaGuardia Airport (LGA) to provide for, among other matters, an extension of the agreement through December 31, 2050.
- In 2004, the Port Authority reached agreement with the airlines operating at JFK and LGA on a new framework by which flight fees paid by the airlines to the Port Authority for the design, construction, operation and maintenance of certain public aircraft facilities (PAF) are calculated. The underlying methodology for recovering costs related to the PAF remained essentially intact; however, modifications were made which impacted the calculation of costs for which the airlines are responsible. As a result of the changes in the flight fee methodology, total flight fees at JFK and LGA were \$6 million lower in 2004 compared to 2003.
- During 2004, the Port Authority recorded \$126 million in Passenger Facility Charges (PFCs) for capital improvements at JFK, LGA and Newark Liberty International Airport (EWR). In addition, the Port Authority also recorded \$95 million in grants and contributions in aid of construction, including \$43 million from the Federal Transit Administration (FTA) for the permanent World Trade Center (WTC) PATH Terminal.

Overview of the Financial Statements

Management's discussion and analysis is intended to serve as an introduction to the Port Authority's basic financial statements, including the notes to the consolidated financial statements, financial schedules pursuant to Port Authority bond resolutions, and statistical and other supplemental information. The basic financial statements, which are included in the Financial Section of this report, comprise the following: the Consolidated Statements of Net Assets, the Consolidated Statements of Revenues, Expenses and Changes in Net Assets, the Consolidated Statements of Cash Flows, and the Notes to the Consolidated Financial Statements.

Management's Discussion and Analysis

(continued)

Consolidated Statements of Net Assets

The Consolidated Statements of Net Assets present the financial position of the Port Authority at the end of the fiscal year and include all of its assets and liabilities. Net assets represent the difference between total assets and total liabilities. A summarized comparison of the Port Authority's assets, liabilities, and net assets follows:

	2004	2003	2002
		(In thousands)	
ASSETS			
Current assets (including restricted assets)	\$ 2,936,548	\$ 2,548,295	\$ 2,046,980
Noncurrent assets (including restricted assets)			
Facilities, net	12,002,575	11,403,696	10,077,080
Other noncurrent assets	4,493,466	4,927,291	4,778,952
Total assets	19,432,589	18,879,282	16,903,012
LIABILITIES			
Current liabilities	2,127,129	3,174,117	2,333,108
Noncurrent liabilities			
Bonds and other asset financing obligations	8,301,375	6,880,993	6,677,847
Other noncurrent liabilities	2,050,218	2,021,841	1,972,762
Total liabilities	12,478,722	12,076,951	10,983,717
NET ASSETS			
Invested in capital assets, net of related debt	5,563,683	5,397,959	4,492,027
Restricted	14,651	15,153	16,505
Unrestricted	1,375,533	1,389,219	1,410,763
Total net assets	\$ 6,953,867	\$ 6,802,331	\$ 5,919,295

The Port Authority's financial position remained strong at December 31, 2004, with assets of \$19.4 billion and liabilities of \$12.5 billion. Investment in facilities, net of depreciation, increased \$599 million from 2003. This amount includes both fully completed facilities and construction-in-progress.

At December 31, 2004, the Port Authority's current liabilities were \$1 billion lower than the prior year. This decrease was primarily due to the successful conclusion of negotiations with the City of New York relating to the extension of the lease agreement covering JFK and LGA.

Net assets, which represent the residual interest in the Port Authority's assets after liabilities are deducted, approximately \$7 billion at December 31, 2004, increased by \$152 million from 2003.

Management's Discussion and Analysis

(continued)

Consolidated Statements of Revenues, Expenses and Changes in Net Assets

The change in net assets is an indicator of whether the overall fiscal condition of an organization has improved or worsened during the year. Following is a summary of the Consolidated Statements of Revenues, Expenses and Changes in Net Assets:

	2004	2003	2002
	(In thousands)		
Gross operating revenues	\$ 2,864,824	\$ 2,764,051	\$ 2,670,583
Operating expenses	(1,981,365)	(1,919,251)	(1,886,190)
Depreciation and amortization	(614,216)	(521,098)	(435,246)
Net (expenses) recoverables related to the events of September 11, 2001	(4,985)	664,211	474,663
Income from operations	264,258	987,913	823,810
Net non-operating expenses	(332,823)	(277,820)	(238,913)
Net PFC and other contributions	220,101	172,943	155,065
Increase in net assets	\$ 151,536	\$ 883,036	\$ 739,962

Additional information on facility operating results can be found in Schedule E located in the Statistical and Other Supplemental Information section of this report.

Revenues

A summary of gross operating revenues follows:

	2004	2003	2002
	(In thousands)		
Gross operating revenues:			
Rentals	\$ 877,306	\$ 858,414	\$ 832,527
Tolls and fares	788,333	758,326	774,337
Aviation fees	714,766	705,302	672,175
Parking and other	269,413	234,261	197,912
Utilities	121,436	112,555	97,184
Rentals – Special Project Bonds projects	93,570	95,193	96,448
Total	\$2,864,824	\$2,764,051	\$2,670,583

Gross operating revenues totaled \$2.9 billion through December 31, 2004, a \$101 million increase over 2003. The increase in gross operating revenues is attributable to an increase in vehicular parking rates and activity levels at the airport public parking lots and the Port Authority Bus Terminal; higher toll revenues stemming from increased traffic at tunnel and bridge crossings; an increase in PATH revenues reflecting the full year impact of restored service to both the Exchange Place and WTC stations, which opened in June 2003 and November 2003, respectively; and higher rentals primarily due to escalations and new lease arrangements at Terminals A, B and C at EWR.

Expenses

A summary of operating expenses, including depreciation and amortization, follows:

	2004	2003	2002
	(In thousands)		
Operating expenses:			
Employee compensation, including benefits	\$ 806,890	\$ 769,711	\$ 777,146
Contract services	545,404	543,927	622,781
Rents and amounts in-lieu-of taxes	252,658	237,014	140,614
Utilities	141,476	122,445	113,880
Materials, equipment and other	141,367	150,961	135,321
Interest on Special Project Bonds	93,570	95,193	96,448
Total operating expenses	1,981,365	1,919,251	1,886,190
Depreciation and amortization	614,216	521,098	435,246
Total	\$2,595,581	\$2,440,349	\$2,321,436

Management's Discussion and Analysis

(continued)

Operating expenses, including depreciation and amortization, totaled \$2.6 billion, through December 31, 2004, \$155 million higher than 2003. The year-to-year increase in operating expenses is primarily due to the following:

- depreciation and amortization expense increased by \$93 million in 2004 compared to 2003 primarily due to the full year impact of the placement into service of the temporary WTC PATH Station and JFK AirTrain at the end of 2003 and the accelerated retirement of the old ExpressRail Facility at the Elizabeth-Port Authority Marine Terminal. The higher depreciation expense associated with the temporary PATH station and JFK AirTrain was partially offset by a reduction in depreciation expense at both JFK and LGA stemming from the extension of the lease agreement with the City of New York for the operation of the New York Airports. The extension of the lease allowed for a lengthening of the period over which most assets were being depreciated, as asset lives were changed from life of lease to standard asset lives, which generally extended beyond the prior lease term. The change in asset lives reduced total depreciation expense at JFK and LGA by \$137 million in 2004.
- employee compensation costs increased by \$37 million in 2004 compared to 2003 mainly due to higher employee benefit costs, which were partially offset by a reduction in police overtime costs.
- utility costs increased by \$19 million mainly due to higher electricity consumption reflecting the full year impact of the placement into service of the JFK AirTrain at the end of 2003.
- rents and amounts in-lieu-of taxes increased by \$16 million primarily due to increased payments in-lieu-of taxes for the WTC site that result from an amended agreement entered into with the City of New York, which became effective on January 1, 2004.

Recoverables Related to the Events of September 11, 2001

	2004	2003	2002
		(In thousands)	
Recoverables	\$ —	\$ 682,232	\$ 587,400
Expenses	(4,985)	(18,021)	(112,737)
Net (expenses) recoverables	\$ (4,985)	\$ 664,211	\$ 474,663

As of December 31, 2004, cumulative insurance proceeds and payments from the Federal Emergency Management Agency (FEMA) recorded by the Port Authority totaled approximately \$1.37 billion. Of this amount, \$864 million has been recorded as revenue, \$434 million has been applied to expenses related to the events of September 11, 2001, primarily the cost of office space necessary to replace the Port Authority's offices that were located at the World Trade Center, and the balance of approximately \$68 million has been applied to a portion of the outstanding receivable representing the net book value of the properties destroyed.

Non-operating Revenues and Expenses

	2004	2003	2002
		(In thousands)	
Non-operating revenues and (expenses):			
Income on investments	\$ 42,497	\$ 50,306	\$ 67,898
Increase in fair value of investments	16,550	15,842	29,914
Interest expense in connection with bonds and other asset financing	(391,870)	(344,755)	(336,725)
Gain on disposition of assets	—	787	—
Net non-operating expenses	\$ (332,823)	\$ (277,820)	\$ (238,913)

Financial expense of \$392 million reflects an increase of \$47 million from 2003, primarily due to increased interest expense attributable to higher balances on outstanding consolidated bonds and notes during 2004 compared to 2003. Financial income, which totaled \$59 million in 2004, decreased by \$7 million due to lower earnings on investments reflecting the impact of lower financial markets, and the fact that interest earnings on amounts receivable associated with the sale of the Vista Hotel ended in December 2003.

Management's Discussion and Analysis

(continued)

Passenger Facility Charges and Other Contributions

	2004	2003	2002
	(In thousands)		
Passenger Facility Charges	\$125,532	\$109,111	\$110,471
Contributions in aid of construction	81,173	57,568	36,258
Grants	13,396	34,501	19,892
Regional ferry pass-through grant program payments	—	(28,237)	(11,556)
Net grants and contributions	94,569	63,832	44,594
Net PFC and other contributions	\$220,101	\$172,943	\$155,065

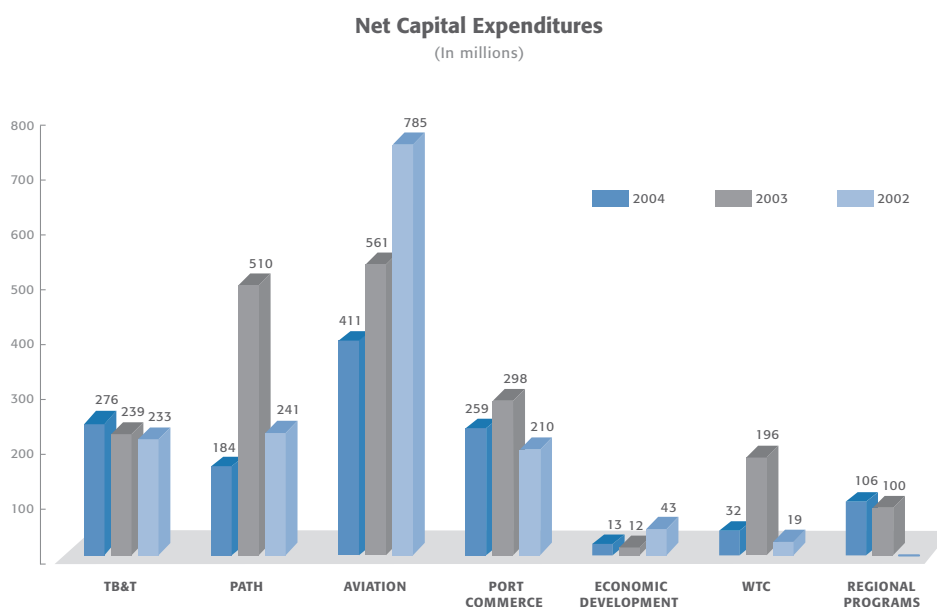
PFCs, contributions and grants provided by others to the Port Authority increased by approximately \$47 million in 2004 from 2003, excluding the impact of regional ferry pass-through grant program payments. The increase was mainly due to increased passenger volume at the airports which resulted in higher PFC collections, an increase in capital expenditures on projects eligible for federal aid, and approximately \$12 million in grants received from the Transportation Security Administration for implementing enhanced security measures at various ports in the bi-state region.

The program in which the Port Authority acted as a sponsoring agency for the pass through of FEMA funds to expand ferry service across the Hudson River to partially offset lost interstate mass transportation capacity between New York and New Jersey was effectively completed in December 2003.

Additional information related to grants and contributions can be found in Note F to the consolidated financial statements.

Capital Construction

Port Authority expenditures and amounts accrued for capital construction projects totaled approximately \$1.3 billion in 2004, \$1.9 billion in 2003 and \$1.5 billion in 2002. Following is a chart of net capital expenditures summarized by line of business:



Net capital expenditures decreased by \$635 million in 2004 when compared to 2003, primarily related to a decline in expenditures associated with PATH and the WTC. In 2003, capital expenditures included \$400 million for construction costs associated with the restoration of the temporary WTC PATH Station, which was placed into service in November 2003, and \$140 million in connection with the purchase of the membership interest of the World Trade Center's retail net lessee, now known as WTC Retail LLC, from Westfield America, Inc.

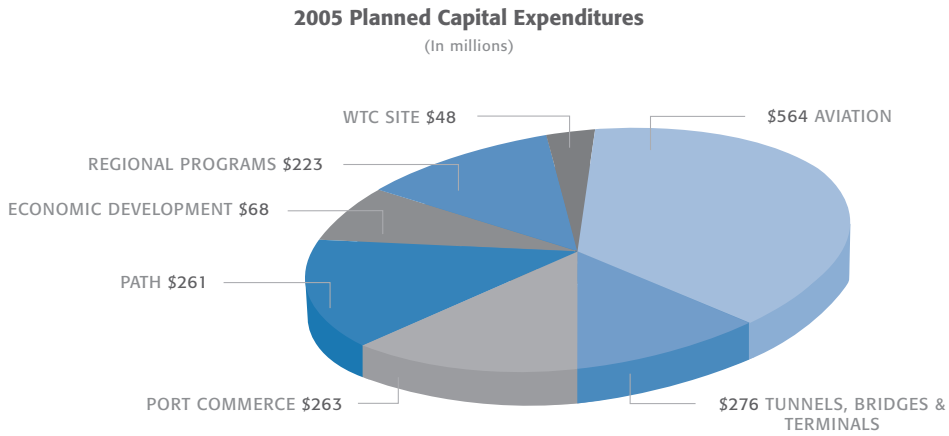
Additional capital investment information on Port Authority facilities can be found in Note B to the consolidated financial statements and in Schedule F located in the Statistical and Other Supplemental Information section of this report.

Management's Discussion and Analysis

(continued)

2005 Planned Capital Expenditures

In connection with the adoption of the 2005 Budget, the Port Authority's capital plan calls for total spending of approximately \$1.7 billion in 2005 as depicted in the following chart:



Capital Financing and Debt Management

As of December 31, 2004, bonds and other asset financing obligations of the Port Authority totaled \$9.6 billion, a \$1.2 billion year to year increase.

During 2004, the Port Authority issued approximately \$2.2 billion in new consolidated bonds and notes. Of this amount, \$1.3 billion was used to fund capital construction projects and other operating obligations in connection with Port Authority facilities and \$855 million was used to refund existing outstanding obligations.

Listed below is a summary of credit ratings that are assigned to the outstanding obligations of the Port Authority. The VSO long-term rating assigned by Standard & Poors was upgraded in 2004 to A+ from A-. All other ratings for the obligations outstanding in 2003 have remained the same for 2004. During 2004, Moody's and Fitch considered the Port Authority's outlook as stable.

OBLIGATION	S&P	Fitch	Moody's
Consolidated Bonds	AA-	AA-	A1
Consolidated Notes	SP-1+	F-1+	MIG1
Commercial Paper	A-1+	F-1+	P-1
VSO Short Term	A-1+	F-1+	VMIG1
VSO Long Term	A+	A+	A2

Each rating reflects only the view of the ratings service issuing such rating and is not a recommendation by such ratings service to purchase, sell or hold any maturity of Port Authority Bonds or as to market price or suitability of any maturity of the Bonds for a particular investor. An explanation of the significance of a rating may be obtained from the ratings service issuing such rating. There is no assurance that any rating will continue for any period of time or that it will not be revised or withdrawn. A revision or withdrawal of a rating may have an effect on market price.

Additional information on Port Authority debt can be found in Note D to the consolidated financial statements.

Consolidated Statements of Net Assets

	December 31,	
	2004	2003
	(In thousands)	
ASSETS		
Current assets:		
Cash	\$ 39,027	\$ 29,398
Investments	2,584,548	2,156,871
Current receivables, net	214,812	282,113
Other current assets	83,510	64,760
Restricted receivables in connection with Passenger Facility Charges	14,651	15,153
Total current assets	2,936,548	2,548,295
Noncurrent assets:		
Restricted cash	9,737	10,295
Investments	709,217	1,069,794
Other amounts receivable, net	1,068,256	1,036,473
Deferred charges and other noncurrent assets	805,911	952,491
Amounts receivable – Special Project Bond projects	1,378,767	1,404,074
Unamortized costs for regional programs	521,578	454,164
Facilities, net	12,002,575	11,403,696
Total noncurrent assets	16,496,041	16,330,987
Total assets	19,432,589	18,879,282
LIABILITIES		
Current liabilities:		
Accounts payable	510,678	525,829
Accrued interest and other current liabilities	248,820	1,077,225
Accrued payroll and other employee benefits	86,513	99,942
Current portion bonds and other asset financing obligations	1,281,118	1,471,121
Total current liabilities	2,127,129	3,174,117
Noncurrent liabilities:		
Accrued pension and other noncurrent employee benefits	591,661	533,524
Other noncurrent liabilities	79,790	84,243
Amounts payable – Special Project Bonds	1,378,767	1,404,074
Bonds and other asset financing obligations	8,301,375	6,880,993
Total noncurrent liabilities	10,351,593	8,902,834
Total liabilities	12,478,722	12,076,951
NET ASSETS	\$ 6,953,867	\$ 6,802,331
Net assets are composed of:		
Invested in capital assets, net of related debt	\$ 5,563,683	\$ 5,397,959
Restricted	14,651	15,153
Unrestricted	1,375,533	1,389,219
Net assets	\$ 6,953,867	\$ 6,802,331

See Notes to Consolidated Financial Statements.

Consolidated Statements of Revenues, Expenses and Changes in Net Assets

	Year ended December 31,	
	2004	2003
	(In thousands)	
Gross operating revenues:		
Rentals	\$ 877,306	\$ 858,414
Tolls and fares	788,333	758,326
Aviation fees	714,766	705,302
Parking and other	269,413	234,261
Utilities	121,436	112,555
Rentals – Special Project Bond projects	93,570	95,193
Total gross operating revenues	2,864,824	2,764,051
Operating expenses:		
Employee compensation, including benefits	806,890	769,711
Contract services	545,404	543,927
Rents and amounts in-lieu-of taxes	252,658	237,014
Utilities	141,476	122,445
Materials, equipment and other	141,367	150,961
Interest on Special Project Bonds	93,570	95,193
Total operating expenses	1,981,365	1,919,251
Net (expenses) recoverables related to the events of September 11, 2001	(4,985)	664,211
Depreciation of facilities	(575,539)	(488,986)
Amortization of costs for regional programs	(38,677)	(32,112)
Income from operations	264,258	987,913
Non-operating revenues and (expenses):		
Income on investments	42,497	50,306
Net increase in fair value of investments	16,550	15,842
Interest expense in connection with bonds and other asset financing	(391,870)	(344,755)
Gain on disposition of assets	–	787
Net non-operating expenses	(332,823)	(277,820)
Passenger Facility Charges and other contributions		
Passenger Facility Charges	125,532	109,111
Contributions in aid of construction	81,173	57,568
Grants	13,396	34,501
Regional ferry pass-through grant program payments	–	(28,237)
Net PFC and other contributions	220,101	172,943
Increase in net assets	151,536	883,036
Net assets, January 1	6,802,331	5,919,295
Net assets, December 31	\$6,953,867	\$6,802,331

See Notes to Consolidated Financial Statements.

Consolidated Statements of Cash Flows

	Year ended December 31,	
	2004	2003
	(In thousands)	
1. Cash flows from operating activities:		
Cash received from operations	\$ 2,814,829	\$ 2,647,634
Cash received related to the events of September 11, 2001	—	683,749
Cash paid to municipalities	(1,100,063)	(136,684)
Cash paid to or on behalf of employees	(761,506)	(706,375)
Cash paid to suppliers	(706,667)	(885,650)
Cash payments related to the events of September 11, 2001	(3,467)	(21,427)
Net cash provided by operating activities	243,126	1,581,247
Cash flows from capital activities:		
Proceeds from sales of capital obligations	1,156,120	1,365,507
Principal paid on capital obligations	(332,682)	(887,729)
Proceeds from capital obligations issued for refunding purposes	1,854,753	2,078,996
Principal paid through capital obligations refundings	(1,854,753)	(2,078,996)
Interest paid on capital obligations	(402,139)	(385,755)
Investment in facilities and construction of capital assets	(1,114,789)	(1,513,037)
Financial income allocated to capital projects	1,962	1,380
Investment in regional programs	(106,091)	(100,166)
Proceeds from insurance related to WTC	1,253	—
Contributions in aid of construction	57,551	62,376
Subtotal	(738,815)	(1,457,424)
Cash flows from related financing activities:		
Interest paid on equipment notes	(763)	(1,083)
Principal paid on equipment notes	—	(45,300)
Proceeds from sale of non-capital financing obligations	402,615	—
Payments for Fund buy-out obligation	(35,211)	(35,213)
Proceeds from Passenger Facility Charges	126,034	110,463
Grants	16,863	34,501
Regional ferry pass-through grant program payments	—	(28,237)
Subtotal	509,538	35,131
Net cash used for capital and related financing activities	(229,277)	(1,422,293)
Cash flows from investing activities:		
Purchase of investment securities	(60,791,113)	(62,658,846)
Proceeds from maturity and sale of investment securities	60,746,162	62,441,602
Interest received on investment securities	31,284	31,563
Other interest income	8,889	16,495
Net cash (used for) provided by investing activities	(4,778)	(169,186)
Net increase (decrease) in cash	9,071	(10,232)
Cash at beginning of year	39,693	49,925
Cash at end of year	\$ 48,764	\$ 39,693

See Notes to Consolidated Financial Statements.

Consolidated Statements of Cash Flows

(continued)

	Year ended December 31,	
	2004	2003
	(In thousands)	
2. Reconciliation of income from operations to net cash provided by operating activities:		
Income from operations	\$ 264,258	\$ 987,913
Adjustments to reconcile income from operations to net cash provided by operating activities:		
Depreciation of facilities	575,539	488,986
Amortization of costs for regional programs	38,677	32,112
Amortization of other assets	42,938	35,267
Change in operating assets and operating liabilities:		
Decrease (increase) in receivables	40,875	(20,498)
Decrease (increase) in deferred charges and other assets	99,101	(46,060)
Decrease in payables	(16,318)	(10,361)
(Decrease) increase in other liabilities	(846,652)	51,131
Increase in accrued payroll, pension and other employee benefits	44,708	62,757
Total adjustments	(21,132)	593,334
Net cash provided by operating activities	\$ 243,126	\$1,581,247

3. Capital obligations:

Consolidated bonds and notes, commercial paper, variable rate master notes and versatile structure obligations.

4. Noncash capital financing activity:

Noncash activity of \$73,785,000 in 2004 and \$85,377,000 in 2003 includes amortization of discount and premium on consolidated bonds and notes, accretion associated with capital appreciation bonds and amounts payable in connection with Special Project Bonds. Noncash capital financing did not include any activities that required a change in fair value.

See Notes to Consolidated Financial Statements.

Notes to Consolidated Financial Statements

Note A – Nature of the Organization and Summary of Significant Accounting Policies

1. Reporting Entity

a. The Port Authority of New York and New Jersey was created in 1921 by Compact between the two States and consented to by the Congress of the United States. The Compact envisions the Port Authority as being financially self-sustaining. As such, the agency must raise the funds necessary for the improvement, construction or acquisition of its facilities and their operation generally upon the basis of its own credit. Cash derived from Port Authority operations and other cash received may be disbursed only for specific purposes in accordance with provisions of various statutes and agreements with holders of its obligations and others. The costs of providing facilities and services to the general public on a continuing basis are recovered primarily from operating revenue sources, including rentals, tolls, fares, aviation fees and other charges.

b. The Governor of each State, with the consent of the respective State Senate, appoints six of the twelve members of the governing Board of Commissioners. The Commissioners serve without remuneration for six-year overlapping terms. Meetings of the Commissioners of the Port Authority are open to the public in accordance with policies adopted by the Commissioners; the actions the Commissioners take at Port Authority meetings are subject to gubernatorial review and may be vetoed by the Governor of their respective State.

c. The Audit Committee, which consists of four members of the Board of Commissioners, provides oversight of the quality and integrity of the accounting, auditing and financial reporting processes. The independent auditors are retained by and meet directly, on a regular basis, with the Audit Committee. The Audit Committee also reviews the performance and independence of the independent auditors, who are required to provide written disclosure of, and discuss with the Committee, any significant relationships or issues that would have a bearing on their independence. The Chair of the Audit Committee periodically advises the Board of Commissioners on the activities of the Committee.

d. The consolidated financial statements and schedules include the accounts of the Port Authority of New York and New Jersey and its wholly-owned corporate entities, Port Authority Trans-Hudson Corporation (PATH), the Newark Legal and Communications Center Urban Renewal Corporation, the New York and New Jersey Railroad Corporation, and WTC Retail LLC (all collectively referred to as the Port Authority).

2. Basis of Accounting

a. The Port Authority's activities are accounted for using the flow of economic resources measurement focus and the accrual basis of accounting. All assets, liabilities, net assets, revenues and expenses are accounted for in an enterprise fund with revenues recorded when earned and expenses recorded at the time liabilities are incurred.

b. In accordance with the Governmental Accounting Standards Board (GASB) Statement No. 20, *Accounting and Financial Reporting for Proprietary Funds and Other Governmental Activities That Use Proprietary Fund Accounting*, the Port Authority follows the pronouncements of the GASB in its accounting and financial reporting. Also, in accordance with GASB Statement No. 20, the Port Authority follows the pronouncements of all applicable Financial Accounting Standards Board Statements and Interpretations, Accounting Principles Board Opinions and Accounting Research Bulletins of the Committee on Accounting Procedure issued on or before November 30, 1989, unless they conflict with or contradict GASB guidance.

3. Significant Accounting Policies

a. Facilities are carried at cost. The costs for facilities include net interest expense incurred from the date of issuance of the debt to finance construction until such capital project is completed and ready for its intended use. Generally, costs in excess of \$100,000 for additions, asset replacements and/or asset improvements that benefit future accounting periods or are expected to prolong the service lives of assets beyond their originally assigned lives are capitalized (see Note B). Facilities do not include regional programs undertaken at the request of the Governor of the State of New Jersey or the Governor of the State of New York (see Note H).

b. Depreciation of facilities is computed using the straight-line method during the estimated useful lives of the related assets (see Note B). The useful lives of assets are developed by the various related disciplines in the Port Authority's Engineering Department utilizing past experience, standard industrial expectations, and external sources such as consultants, manufacturers and contractors. Useful lives are reviewed periodically for each specific type of asset class. Asset lives used in the calculation of depreciation are generally as follows:

Buildings, bridges, tunnels and other structures	25 to 100 years
Machinery and equipment	5 to 35 years
Runways, roadways and other paving	10 to 20 years
Utility infrastructure	20 to 40 years

Assets located at facilities leased by the Port Authority from others are depreciated over the lesser of the remaining term of the facility lease or the asset life stated above.

Notes to Consolidated Financial Statements

(continued)

Costs of regional programs are amortized on a straight-line basis (see Note H). Certain operating costs, which provide benefits for periods exceeding one year, are deferred and amortized over the period benefited.

- c. Cash consists of cash on hand and demand deposits.
- d. Inventories are valued using an average cost method which prices items on the basis of the average cost of all similar goods remaining in stock. Inventory is reported as a component of "Other noncurrent assets" on the Consolidated Statements of Net Assets.
- e. Operating revenues include rentals, tolls, fares, aviation fees, and other charges derived in connection with the use of and privileges granted at Port Authority facilities, and amounts received from operating grants. Operating expenses include those costs incurred for the operation, maintenance and security of Port Authority facilities. All other revenues, which include financial income, Passenger Facility Charges (PFCs), contributions in aid of construction, non-operating grants, and gains resulting from the disposition of assets, if any, are reported as non-operating revenues, and all other expenses, such as interest expense, losses resulting from the disposition of assets, and pass-through grant sponsor costs are reported as non-operating expenses.
- f. Pursuant to the Aviation Safety and Capacity Expansion Act of 1990, the Port Authority has been authorized to impose \$3 Passenger Facility Charges on enplaning passengers. Amounts attributable to the collection and investment of PFCs are restricted and can only be used for Federal Aviation Administration approved airport-related projects. Revenue derived from the collection of PFCs, net of the air carriers' handling charges, is recognized and accrued as non-operating revenue when the passenger activity occurs and the fees are due from the air carriers (see Consolidated Statements of Revenues, Expenses and Changes in Net Assets and Schedule E). PFC revenue applied to eligible capital projects is reflected as a component of "Facilities, net" on the Consolidated Statements of Net Assets and Schedule F.
- g. All Port Authority investment values which are affected by interest rate changes have been reported at their fair value, using published market prices. The Port Authority uses a variety of financial instruments to assist in the management of its financing and investment objectives, and may also employ hedging strategies to minimize interest rate risk and enters into various derivative instruments, including options on United States Treasury securities, repurchase and reverse repurchase (yield maintenance) agreements, United States Treasury and municipal bond futures contracts (see Note C) and interest rate exchange contracts (swaps) (see Note D).
- h. When issuing new debt for refunding purposes, the difference between the acquisition price of the new debt and the net carrying amount of the refunded debt is deferred and amortized using the effective interest method as a component of interest expense over the remaining life of the old debt or the life of the new debt, whichever is shorter.
- i. Environmental costs, including costs associated with the Port Authority's dredging and disposal plan, are generally charged as an operating expense. However, such costs, when they result in the construction of a new asset or the improvement of an existing asset compared with its condition when it was constructed or acquired, are capitalized. Improved asset conditions include the extension of the useful life, increased capacity, and improvement of safety or efficiency.
- j. The preparation of the consolidated financial statements in conformity with accounting principles generally accepted in the United States of America requires management, where necessary, to make estimates and assumptions that affect the amounts reported in the consolidated financial statements and accompanying notes. Actual results could differ from those estimates.
- k. The 2003 consolidated financial statements contain the reclassification of certain amounts, which have been made in order to conform to the classifications in 2004.

4. Reconciliation of the Consolidated Financial Statements Prepared in Accordance with Accounting Principles Generally Accepted in the United States of America to Schedules Prepared Pursuant to Port Authority Bond Resolutions

Schedules A, B, and C, which follow the notes to the consolidated financial statements, have been prepared in accordance with legal requirements and Port Authority bond resolutions which differ in some respects from accounting principles that are generally accepted in the United States of America, as follows:

- a. The revenues and expenses of facilities are accounted for in the operating fund. The financial resources expended for the construction or acquisition of major facilities or improvements are accounted for in the capital fund. Transactions involving the application of net revenues are accounted for in the reserve funds.

Notes to Consolidated Financial Statements

(continued)

b. Consistent with Port Authority bond resolutions, PFCs are deferred until spent on approved project costs. Unspent PFC program amounts are a Port Authority liability, and are reflected as "Deferred income in connection with PFCs". A reconciliation of revenues related to PFCs on the Consolidated Statements of Revenues, Expenses and Changes in Net Assets to deferred income in connection with PFCs on Schedule B – Assets and Liabilities follows:

	Year ended December 31,	
	2004	2003
	(In thousands)	
Passenger Facility Charges	\$ 125,532	\$ 109,111
Financial income, PFCs	—	4
Direct PFC project payments	(126,034)	(110,467)
PFC deferred income, January 1	15,153	16,505
PFC deferred income, December 31	\$ 14,651	\$ 15,153

c. Port Authority bond resolutions provide that net operating revenues shall not include an allowance for depreciation on facilities other than of ancillary equipment. Thus, depreciation is not a significant factor in determining the net revenues and the reserves of the Port Authority or their application as provided in the Port Authority's bond resolutions. Instead, facility capital costs are provided for through deductions from net revenues and reserves of amounts equal to principal payments on debt or through direct investment in facilities. These amounts are credited at par to "Facility infrastructure investment" on Schedule B – Assets and Liabilities.

d. Debt service in connection with operating asset obligations is paid from the same revenues and in the same manner as operating expenses of the Port Authority.

e. Capital costs for regional programs are included in "Invested in facilities" in accordance with Port Authority bond resolutions.

f. Consolidated bonds and notes are recorded as outstanding at their par value commencing on the date that the Port Authority is contractually obligated to issue and sell such obligations. Discounts and premiums are capitalized at issuance.

g. To reflect the cumulative amount invested by the Port Authority since 1921 in connection with its facilities, the cost of assets removed from service is not deducted from "Invested in facilities". However, in the event of the sale of assets removed from service or recovery of amounts related to assets destroyed or damaged, the amount of proceeds received from such sale or recovery is deducted from "Invested in facilities".

Notes to Consolidated Financial Statements

(continued)

A reconciliation of the Consolidated Statements of Revenues, Expenses and Changes in Net Assets and the Consolidated Statements of Net Assets to Schedules A and B follows:

Consolidated Statements of Revenues, Expenses and Changes in Net Assets to Schedule A – Revenues and Reserves

	Year ended December 31,	
	2004	2003
	(In thousands)	
Increase in net assets reported on Consolidated Statements of Revenues, Expenses and Changes in Net Assets	\$ 151,536	\$ 883,036
Add: Depreciation of facilities	575,539	488,986
Amortization of costs for regional programs	38,677	32,112
Amortization of discount and premium	7,054	7,728
	772,806	1,411,862
Less: Debt maturities and retirements	211,870	698,280
Call premiums on refunded bonds	5,250	839
Repayment of capital asset obligations	10,737	6,329
Debt retirement acceleration	110,075	183,120
Change in appropriations for self-insurance	(249)	15,201
Direct investment in facilities	285,441	542,260
Gain on disposition of assets	—	787
Passenger Facility Charges	125,532	109,111
PFC income on investments (including net increase in fair value of investments)	—	4
	748,656	1,555,931
Increase (decrease) in reserves reported on Schedule A – Revenues and Reserves (pursuant to Port Authority bond resolutions)	\$ 24,150	\$ (144,069)

Consolidated Statements of Net Assets to Schedule B – Assets and Liabilities

	December 31,	
	2004	2003
	(In thousands)	
Net assets reported on Consolidated Statements of Net Assets	\$ 6,953,867	\$ 6,802,331
Add: Accumulated depreciation of facilities	6,135,605	5,593,461
Accumulated retirements and gains and losses on disposal of invested in facilities	1,597,214	1,563,819
Cumulative amortization of costs for regional programs	694,789	656,112
Cumulative amortization of discount and premium	56,832	55,028
	15,438,307	14,670,751
Less: Deferred income in connection with PFCs	14,651	15,153
Net assets reported on Schedule B – Assets and Liabilities (pursuant to Port Authority bond resolutions)	\$15,423,656	\$14,655,598

Notes to Consolidated Financial Statements

(continued)

Note B – Facilities

1. Facilities, net is comprised of the following:

	Beginning of Year	Additions	Transfers	Retirements	End of Year
(In thousands)					
2004					
Capital assets not being depreciated:					
Land	\$ 517,706	\$ –	\$ 141,750	\$ –	\$ 659,456
Construction in progress	1,753,575	1,174,418	(909,098)	–	2,018,895
Total capital assets not being depreciated	2,271,281	1,174,418	(767,348)	–	2,678,351
Other capital assets:					
Buildings, bridges, tunnels, other structures	5,578,692	–	250,663	(6,692)	5,822,663
Machinery and equipment	4,436,276	–	167,136	(15,752)	4,587,660
Runways, roadways and other paving	2,958,411	–	171,298	(7,379)	3,122,330
Utility infrastructure	1,752,497	–	178,251	(3,572)	1,927,176
Other capital assets	14,725,876	–	767,348	(33,395)	15,459,829
Less accumulated depreciation:					
Buildings, bridges, tunnels, other structures	2,107,019	158,210	–	(6,692)	2,258,537
Machinery and equipment	1,517,662	236,119	–	(15,752)	1,738,029
Runways, roadways and other paving	1,135,783	116,827	–	(7,379)	1,245,231
Utility infrastructure	832,997	64,383	–	(3,572)	893,808
Accumulated depreciation	5,593,461	575,539	–	(33,395)	6,135,605
Total other capital assets, net	9,132,415	(575,539)	767,348	–	9,324,224
Facilities, net	\$11,403,696	\$ 598,879	\$ –	\$ –	\$12,002,575

2003

Capital assets not being depreciated:					
Land	\$ 502,095	\$ –	\$ 15,611	\$ –	\$ 517,706
Construction in progress	3,053,281	1,815,602	(3,115,308)	–	1,753,575
Total capital assets not being depreciated	3,555,376	1,815,602	(3,099,697)	–	2,271,281
Other capital assets:					
Buildings, bridges, tunnels, other structures	4,479,493	–	1,120,749	(21,550)	5,578,692
Machinery and equipment	3,148,599	–	1,300,572	(12,895)	4,436,276
Runways, roadways and other paving	2,478,900	–	491,380	(11,869)	2,958,411
Utility infrastructure	1,573,682	–	186,996	(8,181)	1,752,497
Other capital assets	11,680,674	–	3,099,697	(54,495)	14,725,876
Less accumulated depreciation:					
Buildings, bridges, tunnels, other structures	1,961,791	166,778	–	(21,550)	2,107,019
Machinery and equipment	1,397,433	133,124	–	(12,895)	1,517,662
Runways, roadways and other paving	1,030,533	117,119	–	(11,869)	1,135,783
Utility infrastructure	769,213	71,965	–	(8,181)	832,997
Accumulated depreciation	5,158,970	488,986	–	(54,495)	5,593,461
Total other capital assets, net	6,521,704	(488,986)	3,099,697	–	9,132,415
Facilities, net	\$10,077,080	\$1,326,616	\$ –	\$ –	\$11,403,696

2. Net interest expense added to the cost of facilities was \$61,999,000 in 2004 and \$86,119,000 in 2003.

3. The extension of the lease agreement with the City of New York for Port Authority operation of JFK and LGA allowed for a lengthening of the period over which most assets were being depreciated, as asset lives were changed from life of lease to their standard asset lives, which generally extended beyond the prior lease term. The change in asset lives reduced depreciation expense at JFK and LGA by \$137 million in 2004.

Notes to Consolidated Financial Statements

(continued)

Note C – Cash and Investments

1. The components of cash and investments are:

	December 31,	
	2004	2003
(In thousands)		
CASH		
Cash on hand	\$ 1,948	\$ 1,960
Demand deposits	46,816	37,733
Total cash	48,764	39,693
Less restricted cash*	9,737	10,295
Unrestricted cash	\$ 39,027	\$ 29,398

	December 31,	
	2004	2003
(In thousands)		
INVESTMENTS AT FAIR VALUE		
United States Treasury notes	\$ 881,872	\$ 717,608
United States Treasury bills	1,270,340	1,462,552
United States government agency obligations	287,809	689,686
Commercial paper notes	170,487	107,987
United States Treasury obligations held pursuant to repurchase agreements	499,440	72,394
JFK International Air Terminal LLC obligations	179,214	172,514
Accrued interest receivable	4,603	3,924
Total investments	3,293,765	3,226,665
Less current investments	2,584,548	2,156,871
Noncurrent investments	\$ 709,217	\$1,069,794

* Primarily lessee security deposits.

2. Port Authority policy provides for funds of the Port Authority to be deposited in banks with offices located in the Port District, provided that the total funds on deposit in any bank do not exceed 50% of the bank's combined capital and permanent surplus. These funds must be fully secured by deposit of collateral having a minimum market value of 110% of average daily balances in excess of that part of the deposits secured through the Federal Deposit Insurance Corporation (FDIC). Actual daily balances may differ from the average daily balances. The collateral must consist of obligations of the United States of America, the Port Authority, the State of New York or the State of New Jersey held in custodial bank accounts in banks in the Port District having combined capital and surplus in excess of \$1 million.

Total actual bank balances were \$36,198,797 as of December 31, 2004. Of that amount, \$34,082,081 was either secured through the FDIC or was fully collateralized by collateral held by a bank acting as the Port Authority's agent and held by such bank in the Port Authority's name. The balance of \$2,116,716 was not collateralized.

3. The investment policies of the Port Authority are established in conformity with its agreements with the holders of its obligations, generally through resolutions of the Board of Commissioners or its Committee on Finance. Individual investment transactions are executed with recognized and established securities dealers and commercial banks. Investment securities are maintained, in the Port Authority's name, by a third party financial institution acting as the Port Authority's agent. Securities transactions are conducted in the open market at competitive prices. Transactions (including repurchase and reverse repurchase agreement transactions) are completed when the Port Authority's securities custodian, in the Port Authority's name, makes or receives payment upon receipt of confirmation that the securities have been transferred at the Federal Reserve Bank of New York or other repository in accordance with the Port Authority's instructions.

Notes to Consolidated Financial Statements

(continued)

Proceeds of "Bonds and other asset financing obligations" may be invested, on an interim basis, in conformance with applicable Federal law and regulations, in obligations of (or fully guaranteed by) the United States of America (including such securities held pursuant to repurchase agreements) and collateralized time accounts. The Consolidated Bond Reserve Fund and the General Reserve Fund amounts may be invested in obligations of (or fully guaranteed by) the United States of America. Additionally, amounts in the Consolidated Bond Reserve Fund and the General Reserve Fund (subject to certain limitations) may be invested in obligations of the State of New York or the State of New Jersey, collateralized time accounts, and Port Authority bonds actually issued and secured by a pledge of the General Reserve Fund. Operating funds may presently be invested in direct obligations of the United States of America and obligations of United States government agencies and sponsored enterprises, investment grade negotiable certificates of deposit and negotiable Bankers' Acceptances with banks having AA or better long-term debt rating, premier status and with issues actively traded in secondary markets, commercial paper having the highest short-term rating (A-1, F-1, P-1), United States Treasury and municipal bond futures contracts, certain interest rate exchange contracts with banks and investment firms, certain interest rate options contracts with primary dealers in United States Treasury securities, and obligations of JFK International Air Terminal LLC (JFKIAT) for certain costs attributable to the completion of the passenger terminal project. The Board has from time to time authorized other investments of operating funds.

The passenger terminal lease with JFKIAT was amended during 2001 to provide for, among other items, the Port Authority to invest up to \$180 million of operating funds to be used by JFKIAT for certain costs attributable to the completion of its passenger terminal project at John F. Kennedy International Airport (JFK). Payments by JFKIAT to the Port Authority on account of such investment (JFKIAT payment obligation) are to be made on a subordinated basis to certain other rental obligations of JFKIAT under such lease, including facility rental pledged to the payment of debt service on Special Project Bonds, Series 6 (see Note D-2). In 2002, the JFKIAT passenger terminal lease was further supplemented to provide for the deferral of approximately \$11 million of JFKIAT payment obligations in 2003 resulting in an increase in the authorized amount of operating funds that could be invested in this project. In June 2004, JFKIAT failed to make certain payments due the Port Authority with respect to the Port Authority's investment of operating funds. The Port Authority's Board of Commissioners subsequently authorized a further amendment to the JFKIAT lease to permit JFKIAT to defer its 2004 payment obligations relating to the Port Authority's investment, to the extent net revenues from the operation of the terminal are not available to make such payments, to 2005. The Board further authorized the Port Authority to enter into a restructuring of JFKIAT's payments with respect to the Port Authority's investment taking into account JFKIAT's revenues from operations and the extension of the lease agreement with the City of New York with respect to the operation of JFK and LaGuardia Airport (LGA). JFKIAT's ability to meet its contractual commitments under the lease may be affected by trends in the airline industry which may have a negative effect on air traffic and revenues derived from the operation of the air terminal.

The Port Authority has entered into reverse repurchase (yield maintenance) agreements under which the Port Authority contracted to sell a specified United States Treasury security to a counterparty and simultaneously agreed to purchase it back from that party at a predetermined price and future date. All reverse repurchase agreements sold are matched to repurchase agreements bought, thereby minimizing market risk. The credit risk is managed by a daily evaluation of the market value of the underlying securities and periodic cash adjustments, as necessary, in accordance with the terms of the repurchase agreements. Although there were no investments in reverse repurchase agreements at December 31, 2004, during 2004, reverse repurchase agreements in effect at any one time ranged as high as \$943,386,200. Repurchase agreements in effect at any one time during 2004 ranged as high as \$1,298,097,200.

Notes to Consolidated Financial Statements

(continued)

Note D – Outstanding Obligations and Financing

D-1. Outstanding bonds and other asset financing obligations

The obligations noted with (*) on original issuance were subject to the alternative minimum tax imposed under the Internal Revenue Code of 1986, as amended, with respect to individuals and corporations. Obligations noted with (**) are subject to Federal taxation.

	Current	December 31, 2004	
		Noncurrent	Total
		(In thousands)	
A. CONSOLIDATED BONDS AND NOTES	\$ 225,495	\$7,914,538	\$8,140,033
B. COMMERCIAL PAPER NOTES	280,315	—	280,315
C. VARIABLE RATE MASTER NOTES	130,990	—	130,990
D. VERSATILE STRUCTURE OBLIGATIONS	544,000	—	544,000
E. PORT AUTHORITY EQUIPMENT NOTES	65,105	—	65,105
F. FUND BUY-OUT OBLIGATION	35,213	386,837	422,050
	\$1,281,118	\$8,301,375	\$9,582,493

	Current	December 31, 2003	
		Noncurrent	Total
		(In thousands)	
A. CONSOLIDATED BONDS AND NOTES	\$ 420,420	\$6,492,874	\$6,913,294
B. COMMERCIAL PAPER NOTES	249,200	—	249,200
C. VARIABLE RATE MASTER NOTES	149,990	—	149,990
D. VERSATILE STRUCTURE OBLIGATIONS	554,500	—	554,500
E. PORT AUTHORITY EQUIPMENT NOTES	61,800	—	61,800
F. FUND BUY-OUT OBLIGATION	35,211	388,119	423,330
	\$1,471,121	\$6,880,993	\$8,352,114

Notes to Consolidated Financial Statements

(continued)

A. Consolidated Bonds and Notes

		Dec. 31, 2003	Issued/ Accreted	Refunded/ Retired	Dec. 31, 2004
(In thousands)					
Consolidated bonds					
Sixty-ninth series (a)	Due 2005-2011	\$ 22,940	\$ 1,595	\$ 3,130	\$ 21,405
Seventy-fourth series (b)	Due 2005-2014	30,221	2,122	1,785	30,558
Seventy-ninth series	6% due 2005	13,855	—	6,955	6,900
Eightieth series	6% due 2005	7,025	—	3,520	3,505
Eighty-fifth series	5%-5 3/8% due 2008-2028	98,000	—	—	98,000
Eighty-sixth series	4.9%-5.2% due 2005-2012	58,325	—	11,345	46,980
Eighty-eighth series	4.6%-4 3/4% due 2005-2008	54,070	—	13,885	40,185
Ninetieth series **	6 1/8% due 2005	16,125	—	7,825	8,300
Ninety-first series	4.7%-5.2% due 2004-2020	244,480	—	244,480	—
Ninety-second series	4 3/4%-5 5/8% due 2009-2029	90,680	—	90,680	—
Ninety-third series	6 1/8% due 2094	100,000	—	—	100,000
Ninety-fourth series	5.2%-6% due 2004-2017	95,655	—	95,655	—
Ninety-fifth series *	5 1/2%-6 1/8% due 2005-2029	95,000	—	95,000	—
Ninety-sixth series *	5.7%-6.6% due 2004-2023	97,475	—	97,475	—
Ninety-seventh series *	6%-7% due 2005-2023	98,100	—	2,100	96,000
Ninety-eighth series *	5.7%-6.2% due 2005-2015	100,000	—	—	100,000
Ninety-ninth series *	5 1/4%-6% due 2005-2015	86,000	—	5,040	80,960
One hundredth series	5 5/8%-5 3/4% due 2010-2030	135,000	—	—	135,000
One hundred first series *	5.2%-6% due 2005-2015	71,180	—	4,400	66,780
One hundred third series	4.8%-5 1/4% due 2005-2014	59,500	—	4,500	55,000
One hundred fourth series	4 3/4%-5.2% due 2011-2026	150,000	—	—	150,000
One hundred fifth series *	5.1%-6 1/4% due 2005-2016	110,420	—	6,615	103,805
One hundred sixth series *	5.4%-6% due 2005-2016	77,900	—	4,100	73,800
One hundred seventh series *	5 1/8%-6% due 2005-2016	100,000	—	5,485	94,515
One hundred eighth series *	4.9%-6% due 2005-2017	118,780	—	6,030	112,750
One hundred ninth series	5 3/8%-5 1/2% due 2012-2032	150,000	—	—	150,000
One hundred tenth series *	4.7%-5 3/8% due 2005-2017	79,590	—	3,985	75,605
One hundred eleventh series	5% due 2012-2032	100,000	—	—	100,000
One hundred twelfth series *	4 1/2%-5 1/4% due 2005-2018	124,530	—	5,785	118,745
One hundred thirteenth series	4 1/4%-4 3/4% due 2005-2013	90,750	—	15,000	75,750
One hundred fourteenth series	4 3/4%-5 1/2% due 2013-2033	100,000	—	—	100,000
One hundred fifteenth series	4.2%-4 3/8% due 2005-2008	35,000	—	7,000	28,000
One hundred sixteenth series	4 1/4%-5 1/4% due 2005-2033	450,000	—	—	450,000
One hundred seventeenth series *	4.15%-5 1/8% due 2005-2018	81,815	—	4,015	77,800
One hundred eighteenth series	4 3/8%-5.35% due 2005-2014	74,000	—	6,500	67,500
One hundred nineteenth series *	5%-5 7/8% due 2005-2019	261,170	—	10,980	250,190
One hundred twentieth series *	4 1/2%-6% due 2005-2035	270,470	—	10,840	259,630
One hundred twenty-first series	5%-5 1/2% due 2016-2035	200,000	—	—	200,000
One hundred twenty-second series *	5%-5 1/2% due 2005-2036	233,955	—	8,565	225,390
One hundred twenty-third series	4 3/4%-5% due 2017-2036	100,000	—	—	100,000
One hundred twenty-fourth series *	4 1/2%-5% due 2005-2036	283,770	—	8,855	274,915
One hundred twenty-fifth series	5% due 2018-2032	300,000	—	—	300,000
One hundred twenty-sixth series *	5%-5 1/2% due 2005-2037	290,080	—	10,135	279,945
One hundred twenty-seventh series *	4%-5 1/2% due 2005-2037	292,125	—	8,030	284,095
One hundred twenty-eighth series	4%-5% due 2007-2032	250,000	—	—	250,000
One hundred twenty-ninth series	2%-4% due 2005-2015	71,445	—	3,990	67,455
One hundred thirtieth series	1.45%-3 3/4% due 2005-2015	83,865	—	6,220	77,645
One hundred thirty-first series *	2%-5% due 2005-2033	500,000	—	8,015	491,985
One hundred thirty-second series	5% due 2024-2038	300,000	—	—	300,000
One hundred thirty-third series	1 1/4%-4.4% due 2005-2021	—	244,480	—	244,480
One hundred thirty-fourth series	4%-5% due 2009-2039	—	250,000	—	250,000
One hundred thirty-fifth series	4 1/2%-5% due 2024-2039	—	400,000	—	400,000
One hundred thirty-sixth series *	5%-5 1/2% due 2007-2034	—	350,000	—	350,000
One hundred thirty-seventh series *	4%-5 1/2% due 2005-2034	—	250,000	—	250,000
One hundred thirty-eighth series *	4%-5% due 2005-2034	—	350,000	—	350,000
Consolidated notes					
Series TT	3 5/8% due 2004	200,000	—	200,000	—
Series WW **	2.9% due 2006	—	200,000	—	200,000
Series XX **	3.3% due 2007	—	200,000	—	200,000
Consolidated bonds and notes pursuant to Port Authority bond resolutions (c)		7,053,296	\$2,248,197	\$1,027,920	8,273,573
Less unamortized discount and premium (d)		140,002			133,540
Consolidated bonds and notes		\$6,913,294			\$8,140,033

Notes to Consolidated Financial Statements

(continued)

A. Consolidated Bonds and Notes (continued)

(a) Includes \$7,154,000 serial bonds issued on a capital appreciation basis; the only payments with respect to these bonds will be made at their respective maturities, ranging from years 2005 to 2011, in total aggregate maturity amounts of \$25,905,000.

(b) Includes \$11,665,000 serial bonds issued on a capital appreciation basis; the only payments with respect to these bonds will be made at their respective maturities, ranging from years 2005 to 2014, in total aggregate maturity of \$39,185,000.

(c) Debt service requirements to maturity for consolidated bonds and notes outstanding on December 31, 2004 are as follows:

Year ending December 31:	Principal	Interest	Debt Service
	(In thousands)		
2005	\$ 225,495	\$ 401,632	\$ 627,127
2006	430,100	389,913	820,013
2007	428,605	373,689	802,294
2008	232,065	358,381	590,446
2009	231,965	347,597	579,562
2010-2014	1,404,945	1,547,598	2,952,543
2015-2019	1,216,425	1,191,305	2,407,730
2020-2024	1,179,035	903,640	2,082,675
2025-2029	1,254,570	596,863	1,851,433
2030-2034	1,126,910	288,696	1,415,606
2035-2039	456,585	79,433	536,018
2040-2094 ***	100,000	308,496	408,496
	\$8,286,700	\$6,787,243	\$15,073,943

***Debt service 2040-2094 reflects principal and interest payments associated with a single series of outstanding consolidated bonds.

Total principal of \$8,286,700,000 shown above differs from the total consolidated bonds and notes pursuant to Port Authority bond resolutions of \$8,273,573,000 because of differences in the par value at maturity of the capital appreciation bonds of \$13,127,000.

(d) Amount includes the unamortized difference between acquisition price and carrying amount on refunded debt.

Consolidated bonds and notes outstanding as of February 25, 2005 (pursuant to Port Authority bond resolutions) totaled \$8,078,116,000.

The Board of Commissioners has authorized the issuance of consolidated bonds, one hundred thirty-ninth series through one hundred fifty-third series, in aggregate principal amount of up to \$500 million of each series, and consolidated notes, Series YY, ZZ, AAA, BBB and CCC of up to \$300 million in aggregate principal amount of each series.

During 2004, the Port Authority issued \$724,975,000 and \$130,000,000 of consolidated bonds and notes to refund outstanding consolidated bonds and notes, and outstanding Commercial Paper notes, respectively. Although the refundings resulted in an additional cash outlay of \$9,862,000, the Port Authority in effect reduced its aggregate debt service payments by approximately \$58,241,000 over the life of the refunded consolidated bonds and notes. The economic gain resulting from the debt refunding (the difference between the present value of the cash flows required to service the old debt and the present value of the cash flows required to service the new debt) is worth approximately \$38,086,000 in present value savings to the Port Authority.

Notes to Consolidated Financial Statements

(continued)

B. Commercial Paper Notes

Commercial paper obligations are issued to provide interim financing for authorized projects at Port Authority facilities and may be issued until December 31, 2005, in an aggregate principal amount outstanding at any one time not in excess of \$500 million in two separate series. Each series includes a standby revolving credit facility and the maximum aggregate principal amount that may be outstanding at any one time is \$300 million for Series A and \$200 million for Series B.

	Dec. 31, 2003	Issued	Refunded/ Repaid	Dec. 31, 2004
(In thousands)				
Series A*	\$ 161,030	\$ 679,315	\$ 712,855	\$ 127,490
Series B	88,170	481,815	417,160	152,825
	\$249,200	\$1,161,130	\$1,130,015	\$280,315

Interest rates for all commercial paper notes ranged from 0.91% to 1.87% in 2004.

As of February 25, 2005, commercial paper notes outstanding totaled \$255,105,000.

C. Variable Rate Master Notes

Variable rate master notes may be issued in aggregate principal amounts outstanding at any one time not to exceed \$400 million.

	Dec. 31, 2003	Issued	Refunded/ Repaid	Dec. 31, 2004
(In thousands)				
Agreements 1989-1995*	\$ 69,900	\$ —	\$ —	\$ 69,900
Agreements 1989-1998	80,090	—	19,000	61,090
	\$149,990	\$ —	\$19,000	\$130,990

Interest rates are determined weekly, based upon specific industry indices (e.g. three-month Treasury bill rate, tax exempt note rate published by Lehman Brothers, JP Morgan rate published by JP Morgan or the Bond Market Association rate) as stated in each master note agreement, and ranged from 0.85% to 2.07% in 2004.

Debt service requirements on outstanding variable rate master notes, valued for presentation purposes at the rate in effect on December 31, 2004, would be as follows:

	Principal	Interest	Debt Service
(In thousands)			
2005	\$ —	\$ 2,620	\$ 2,620
2006	—	2,620	2,620
2007	—	2,620	2,620
2008	—	2,627	2,627
2009	—	2,620	2,620
2010-2014	13,090	13,114	26,204
2015-2019	30,000	8,976	38,976
2020-2024	68,000	7,142	75,142
2025	19,900	296	20,196
	\$130,990	\$42,635	\$173,625

Variable rate master notes are subject to prepayment at the option of the Port Authority or upon demand of the holders.

Notes to Consolidated Financial Statements

(continued)

D. Versatile Structure Obligations

	Dec. 31, 2003	Issued	Refunded/ Repaid	Dec. 31, 2004
	(In thousands)			
Series 1R*, 4*, 6*	\$277,800	\$ —	\$ 6,300	\$271,500
Series 2, 3, 5	276,700	—	4,200	272,500
	\$554,500	\$ —	\$10,500	\$544,000

Variable interest rates, set daily by the remarketing agent for each series, ranged from 0.72% to 2.18% in 2004.

Debt service requirements on outstanding versatile structure obligations, valued for presentation purposes at the rate in effect on December 31, 2004, would be as follows:

	Principal	Interest	Debt Service
	(In thousands)		
2005	\$ 11,900	\$ 11,657	\$ 23,557
2006	12,500	11,398	23,898
2007	14,000	11,124	25,124
2008	16,800	10,799	27,599
2009	24,000	10,411	34,411
2010-2014	144,200	43,529	187,729
2015-2019	175,600	26,155	201,755
2020-2024	113,700	9,990	123,690
2025-2028	31,300	1,475	32,775
	\$544,000	\$136,538	\$680,538

The Port Authority has entered into a separate standby certificate purchase agreement pertaining to each series of versatile structure obligations with certain banks, which provide that during the term of the banks' commitment (generally three years, subject to renewal), if the remarketing agent fails to remarket any obligations that are tendered by the holders, the bank may be required, subject to certain conditions, to purchase such unremarketed portion of the obligations. If not purchased prior thereto at the Port Authority's option, the Port Authority has agreed to purchase such portion of the obligations within 90 business days after the purchase thereof by the bank. Bank commitment fees during 2004 in connection with the agreements were \$1,459,569. No bank was required to purchase any of the obligations under the agreements in 2004 (see Note D-3).

Notes to Consolidated Financial Statements

(continued)

E. Port Authority Equipment Notes

Equipment notes may be issued in aggregate principal amounts outstanding at any one time not to exceed \$250 million.

	Dec. 31, 2003	Issued	Refunded/ Repaid	Dec. 31, 2004
	(In thousands)			
Notes 1997-2004*	\$ 16,600	\$ 3,540	\$ 1,600	\$ 18,540
Notes 1997-2004	45,200	15,665	14,300	46,565
	\$ 61,800	\$19,205	\$15,900	\$ 65,105

Variable interest rates, set weekly by a remarketing agent for each series, ranged from 0.97% to 2.13% in 2004.

Annual debt service requirements on outstanding Port Authority equipment notes, valued for presentation purposes at the rate in effect on December 31, 2004, would be as follows:

	Principal	Interest	Debt Service
	(In thousands)		
2005	\$18,000	\$ 1,324	\$ 19,324
2006	—	971	971
2007	—	971	971
2008	27,900	674	28,574
2009	2,000	390	2,390
2010-2011	17,205	433	17,638
	\$65,105	\$ 4,763	\$ 69,868

F. Fund Buy-Out Obligation

	Dec. 31, 2003	Accretion (a)	Refunded/ Repaid	Dec. 31, 2004
	(In thousands)			
Obligation outstanding	\$423,330	\$33,931	\$35,211	\$422,050

(a) Represents the annual implicit interest cost (8.25%) contained in the present value of amounts due to the States of New York and New Jersey upon the termination, in 1990, of the Fund for Regional Development.

Payment requirements of the fund buy-out obligation outstanding on December 31, 2004 are as follows:

Year ending December 31:	Payments
	(In thousands)
2005	\$ 35,213
2006	35,211
2007	43,216
2008	43,211
2009	43,211
2010-2014	240,061
2015-2019	262,060
2020-2021	106,816
	\$808,999

As of February 25, 2005, the fund buy-out obligation outstanding totaled \$427,395,000.

Notes to Consolidated Financial Statements

(continued)

D-2. Amounts Payable – Special Project Bonds

Neither the full faith and credit of the Port Authority, nor the General Reserve Fund, nor the Consolidated Bond Reserve Fund are pledged to the payment of the principal and interest on special project bonds. Principal and interest on each series of special project bonds are secured solely by a mortgage by the Port Authority of facility rental (to the extent received by the Port Authority from a lessee) as set forth in a lease with respect to a project to be financed with the proceeds of the bonds of such series, by a mortgage by the lessee of its leasehold interest under the lease and by a security interest granted by the lessee to the Port Authority and mortgaged by the Port Authority in certain items of the lessee's personal property to be located at the project, and such other security in addition to the foregoing as may be required by the Port Authority from time to time as appropriate to the particular project.

	Dec. 31, 2003	Issued	Repaid/ Amortized	Dec. 31, 2004
(In thousands)				
Series 1R, Delta Air Lines, Inc. Project (a) 6.95% term bonds, due 2008	\$ 96,500	\$ —	\$ —	\$ 96,500
Series 2, Continental Airlines, Inc. and Eastern Air Lines, Inc. Project (b)* 9%-9½%, due 2005-2015	174,140	—	8,620	165,520
Less: unamortized discount and premium	5,796	—	486	5,310
Total – Series 2	168,344	—	8,134	160,210
Series 4, KIAC Partners Project (c)* 6¾%-7% due 2005-2019	221,000	—	8,200	212,800
Less: unamortized discount and premium	3,015	—	191	2,824
Total – Series 4	217,985	—	8,009	209,976
Series 6, JFKIAT Project (d)* 5¾%-7% due 2005-2025	928,600	—	9,500	919,100
Less: unamortized discount and premium	7,355	—	336	7,019
Total – Series 6	921,245	—	9,164	912,081
Amounts payable – special project bonds	\$1,404,074	\$ —	\$25,307	\$1,378,767

- (a) Special project bonds, Series 1R, Delta Air Lines, Inc. Project, were issued in connection with a project that includes the construction of a passenger terminal building at LGA leased to Delta Air Lines, Inc.
- (b) Special project bonds, Series 2, Continental Airlines, Inc. and Eastern Air Lines, Inc. Project, were issued in connection with a project including the construction of a passenger terminal at LGA leased to and to be occupied by Continental and Eastern. The leasehold interest of Eastern was assigned to Continental. Continental's leasehold interest in such passenger terminal, including the previously acquired leasehold interest of Eastern was subsequently assigned to USAir, Inc. (with Continental to remain liable under both underlying leases).
- (c) Special project bonds, Series 4, KIAC Partners Project, were issued to refund the Series 3 bonds, and in connection with a project at JFK, that includes the construction of a cogeneration facility, the renovation and expansion of the central heating and refrigeration plant, and the renovation and expansion of the thermal distribution system.
- (d) Special project bonds, Series 6, JFKIAT Project, were issued in connection with a project that includes the development and construction of a new passenger terminal at JFK (see Note C-3).

D-3. Interest Rate Exchange Contracts (Swaps)

The Port Authority records interest rate exchange contracts pursuant to the settlement method of accounting whereby cash paid or received under the terms of the swap is charged or credited to the related interest expense account for the purpose of managing interest rate exposure. Each swap transaction involves the exchange of fixed and variable rate interest payment obligations with respect to an agreed upon nominal principal amount called a "notional amount".

Notes to Consolidated Financial Statements

(continued)

Objective

The Port Authority entered into four pay-fixed, receive-variable interest rate swaps on a forward basis in order to protect against the potential of rising interest rates between the execution date and the effective date and to preserve the net present value savings of the bond refunding associated with each swap transaction. Each swap is matched against a versatile structure obligation, the proceeds of which were used to refund outstanding high-coupon fixed rate debt. The combination of the swaps and the associated variable rate debt created synthetic fixed rate-refunding bonds.

The notional amount of the swaps matches the principal amount of the associated debt. The Port Authority's swap agreements contain scheduled reductions to outstanding notional amounts to approximately follow scheduled reductions of the associated debt. The terms, including the fair values and credit ratings of the outstanding swaps as of December 31, 2004, are as follows:

Associated Debt	Notional Amount	Execution Date	Effective Date	Fixed Rate Paid	Variable Rate Received	Fair Value	Swap Termination Date	Counterparty Credit Rating (a)
VSO 2	\$ 85,760,000	10/13/1993	3/3/1994	6.875%	JJK (b)	\$(20,166,662)	7/1/2005	A+/Aa3/AA-
VSO 3	89,000,000	2/18/1993	7/15/1995	5.950%	JJK (b)	(17,011,250)	7/15/2005	A+/Aa3/AA-
VSO 4	100,000,000	2/24/1995	5/1/1996	5.570%	JJK (b)	(5,139,725)	5/1/2006	A+/Aa3/AA-
VSO 5	97,800,000	9/7/1995	8/1/1996	5.473%	BMA (c)	(5,428,648)	8/1/2006	A+/Aa3/AA-
Total	\$372,560,000					\$(47,746,285)		

(a) Ratings supplied by Standard & Poor's/Moody's/Fitch Ratings.

(b) The JJ Kenny "High Grade" Index.

(c) The Bond Market Association Municipal Swap Index.

Debt service requirements of the underlying variable rate debt and net swap payments, valued for presentation purposes at the rate in effect on December 31, 2004, are shown below. As rates vary, variable rate debt interest payments and net swap payments will vary.

Year ending December 31:	Versatile Structure Obligations		Interest Rate Swaps, Net	Total
	Principal	Interest		
	(In thousands)			
2005	\$ 7,500	\$ 7,912	\$14,483	\$ 29,895
2006	7,900	5,552	10,371	23,823
2007	9,200	3,594	6,911	19,705
2008	9,600	3,507	6,522	19,629
2009	16,500	3,399	6,102	26,001
2010-2014	100,300	13,308	22,910	136,518
2015-2019	134,600	5,741	8,714	149,055
2020-2024	84,900	63	150	85,113
Total	\$370,500	\$43,076	\$76,163	\$489,739

Fair Value

Interest rates have declined since the inception of the swaps and therefore, all swaps had a negative fair value as of December 31, 2004. The negative fair values may be countered by reductions in total interest payments under the variable rate obligations, creating lower synthetic interest rates. Because interest rates on the versatile structure obligations are reset on a daily basis, thereby reflecting market interest rates, the obligations do not have corresponding fair value increases. The fair values of the swaps were estimated using the zero coupon method. This method calculates the future net settlement payments required by the swap, assuming that the current forward rates implied by the yield curve correctly anticipate future spot interest rates. These payments are then discounted using the spot rates implied by the current yield curve for hypothetical zero-coupon bonds due on the date of each future net settlement on the swaps.

Credit Risk

As of December 31, 2004, the Port Authority was not exposed to credit risk on any of its outstanding swaps because the swaps had negative fair values. However, should interest rates change and the fair values of the swaps become positive, the Port Authority would be exposed to credit risk in the amount of the swaps' fair value.

Notes to Consolidated Financial Statements

(continued)

All of the swap agreements provide each party the right to set-off, counterclaim, or withhold payment upon and during the continuation of an event of default by the other party until the event of default is remedied, and, in addition, an early termination date may be designated if an event of default occurs. Of the four swap transactions currently outstanding, three swaps are held with one counterparty.

Basis Risk

The Port Authority's interest payments on the associated debt are equivalent to the daily variable market rates set by the remarketing agent. The Port Authority receives a variable rate payment based on an index other than the daily market rates on each swap and would be exposed to basis risk should the relationship between the actual rate and the swap rate index differ. To the degree these rates differ, expected cost savings may not be realized. As of December 31, 2004, the variable market rates were 2.10%, 2.17%, 2.14% and 2.17%, whereas the swap rate indexes were 2.00% for the JJ Kenny "High Grade" Index and 1.99% for the Bond Market Association Municipal Swap Index.

Termination Risk

The Port Authority or the counterparty may terminate any of the swaps if the other party fails to perform under the terms of the agreement. If any of the swaps are terminated, the associated variable rate debt will no longer carry synthetic fixed interest rates. Also, if at the time of termination the counterparty suffers a loss, the Port Authority would be liable to the counterparty for a payment calculated pursuant to the agreement with respect to such loss.

Rollover Risk

The Port Authority is exposed to rollover risk on swaps that mature or may be terminated prior to the maturity of the associated debt. When these swaps terminate, the Port Authority will not realize the synthetic rate offered by the swaps on the underlying issues. The following debt is exposed to rollover risk:

Associated Debt	Associated Debt Maturity Date	Swap Termination Date
VSO 2	5/1/2019	7/1/2005 (d)
VSO 3	6/1/2020	7/15/2005 (d)
VSO 4	4/1/2024	5/1/2006
VSO 5	8/1/2024	8/1/2006

(d) When the swap agreement was originally executed, notwithstanding its automatic termination in 2005, it was based on a market rate to the maturity date of the series of versatile structure obligations to which it pertained. At the end of the initial term of the swap agreement, a payment will either be made to the Port Authority or to the counterparty. In the event that a new swap agreement is entered into with the same counterparty for the remaining term of such series of versatile structure obligations, it was intended that the payment calculated at the end of the initial term of the swap agreement, combined with the new swap agreement, would equal the effective fixed rate at the original execution date.

Note E – Reserves

The General Reserve Fund is pledged in support of Consolidated Bonds and Notes. Statutes which required the Port Authority to create the General Reserve Fund established the principle of pooling revenues from all facilities and require that the Port Authority apply surplus revenues from all of its existing facilities to maintain the General Reserve Fund in an amount at least equal to 10% of the par value of outstanding bonds legal for investment. At December 31, 2004, the General Reserve Fund balance was \$1,068,790,285 and met the prescribed statutory amount.

The balance remaining of all net revenues of the Port Authority's existing facilities after deducting payments for debt service upon all Consolidated Bonds and Notes and the amount necessary to maintain the General Reserve Fund at its statutorily required amount, is to be paid into the Consolidated Bond Reserve Fund, which is pledged as additional security for all outstanding Consolidated Bonds and Notes. Consolidated Bonds and Notes have a first lien upon the net revenues (as defined in the Consolidated Bond Resolution) of all existing facilities of the Port Authority and any additional facility financed by Consolidated Bonds.

Other capital asset obligations (versatile structure obligations, commercial paper obligations, and variable rate master notes), and the interest thereon, are not secured by or payable from the General Reserve Fund. Principal of, and interest on, other capital asset obligations are payable solely from the proceeds of obligations issued for such purposes or from net revenues paid into the Consolidated Bond Reserve Fund and, in the event such proceeds or net revenues are insufficient therefore, from other moneys of the Port Authority legally available for such payments. Operating asset obligations (equipment notes and the Fund buy-out obligation) are paid in the same manner and from the same sources as operating expenses. Special Project Bonds are not secured by or payable from the General Reserve Fund or the Consolidated Bond Reserve Fund.

Notes to Consolidated Financial Statements

(continued)

The Port Authority has a long-standing policy of maintaining total reserve funds in an amount equal to at least the next two years' bonded debt service on outstanding debt secured by a pledge of the General Reserve Fund. The moneys in the reserve funds may be accumulated or applied only to purposes set forth in legislation and the agreements with the holders of the Port Authority's obligations pertaining thereto. At December 31, 2004, the Port Authority met the requirements of the Consolidated Bond Resolution to maintain total reserve funds in cash and certain specified securities.

Note F – Funding Provided by Others

During 2004 and 2003, the Port Authority received federal and state grants and contributions from other entities for various programs as summarized below:

1. Operating programs

- Federal Aviation Administration (FAA) K-9 Program – The FAA provided funds to offset the costs of training and caring for explosive detection dogs. Amounts received in connection with this program were approximately \$600,000 in each of the years 2004 and 2003.
- Transportation Security Administration (TSA) funds for airport screening – The TSA provided approximately \$600,000 in 2004 and \$9 million in 2003 to reimburse the Port Authority for costs primarily attributable to providing police personnel at the Port Authority's three major airports.
- New York State Emergency Management Office (NYSEMO) Equipment Replacement Program – The NYSEMO provided funds of approximately \$2 million in 2004 for the replacement of various computer systems, software and other equipment for the Port Authority's emergency operations center.

Grant receipts for operating activities are recorded as operating revenues on the Consolidated Statements of Revenues, Expenses and Changes in Net Assets and on Schedule A – Revenues and Reserves.

2. Non-operating grants

- TSA Port Security Grant – The TSA provided approximately \$12 million in 2004 and \$2 million in 2003 to reimburse costs incurred by the Port Authority as a result of implementing enhanced security at various ports in the New York and New Jersey region.

3. Contributions In Aid of Construction

The Port Authority receives contributions in aid of construction with respect to its facilities from federal, state and other entities. Funds provided by the Federal Transportation Administration for the restoration of the permanent World Trade Center PATH Terminal in 2004 and 2003 were approximately \$43 million and \$9 million, respectively. All other contributions (including amounts receivable) were approximately \$38 million in 2004 and \$49 million in 2003.

Note G – Lease Commitments

1. Operating lease revenues

Gross operating revenues attributable to fixed rentals associated with operating leases amounted to approximately \$833 million in 2004 and approximately \$817 million in 2003.

2. Property held for lease

The Port Authority has entered into operating leases with tenants for the use of space at various Port Authority facilities including buildings, terminals, offices and consumer service areas at air terminals, marine terminals, bus terminals, rail facilities, industrial parks, the Teleport, the World Trade Center and the Newark Legal and Communications Center. Investments in such facilities, as of December 31, 2004, include property associated with minimum rentals derived from the leases. It is not reasonably practicable to segregate the value of assets associated with producing minimum rental revenue from the value of assets associated with an entire facility.

Notes to Consolidated Financial Statements

(continued)

Future minimum rentals are predicated upon the ability of the lessees to meet their commitments. Future minimum rentals scheduled to be received on operating leases in effect on December 31, 2004 are:

Year ending December 31:

	(In thousands)
2005	\$ 640,352
2006	581,198
2007	567,301
2008	577,588
2009	558,722
Later years	100,848,696
Total future minimum rentals (a)	\$103,773,857

(a) Includes future rentals of approximately \$97.2 billion attributable to World Trade Center leases (see Note K).

3. Property leased from others

Rental expenses under leases, including payments to the cities of New York and Newark for various air terminals, marine terminals and other facilities and the cost of replacement office space due to the destruction of the World Trade Center, aggregated \$245 million in 2004 and \$240 million in 2003. Future minimum rentals scheduled to be paid on operating leases in effect on December 31, 2004 are detailed below. Additional rentals may be payable based on earnings of specified facilities under some of these leases.

Year ending December 31:

	(In thousands)
2005	\$ 211,310
2006	210,996
2007	210,854
2008	208,502
2009	208,581
2010-2014	1,030,995
2015-2019	892,743
2020-2024	823,680
2025-2029	819,072
2030-2034	807,500
2035-2065 *	3,604,000
Total future minimum rent payments	\$9,028,233

* Future minimum rent payments for the years 2035-2065 reflect payments associated with the City of New York and the City of Newark lease commitments.

4. Information on leases at the New York City Airports, Newark Liberty International Airport (EWR) and Port Newark, and certain agreements relating to other Port Authority facilities located in the City of Newark

The Port Authority operates JFK and LGA under a lease agreement with the City of New York entered into in 1947 and amended and supplemented from time to time thereafter.

On November 24, 2004, the City of New York and the Port Authority amended the lease agreement to provide for the extension, effective January 1, 2002, of the term of the lease to December 31, 2050. Upon execution of the lease extension, the Port Authority made a payment to the City of New York in the amount of approximately \$780 million for rent accrued through November 24, 2004, together with interest on such amounts. The remaining minimum annual rental for 2004 was paid as a monthly installment. Thereafter, annual rentals, payable in monthly installments, will be equal to the greater of the minimum annual rental (\$93.5 million, as adjusted from time to time) or 8% of the Port Authority's gross revenues from JFK and LGA. Gross revenues include all revenues arising out of JFK and LGA, excluding federal grants or any monies received as a result of any federal statute, regulation or policy, such as PFCs and amounts used for airport security. Beginning in 2007 and every 5 years thereafter, the minimum annual rental will be reset to equal 10% of average gross revenues at JFK and LGA over the prior 5-year period, so long as such adjustment does not result in a lower minimum annual rental than was payable for the prior 5-year period.

In October 2002, the Port Authority and the City of Newark entered into agreements pertaining to EWR and Port Newark, which among other things, provide for an extension of the expiration date of the lease for each facility from December 31, 2031 to

Notes to Consolidated Financial Statements

(continued)

December 31, 2065. The agreements also provide that, in light of the amendment of the lease with the City of New York relating to JFK and LGA, the City of Newark will have the right to amend the provisions of its lease with the Port Authority to conform to the terms agreed upon with the City of New York. The Port Authority has not recorded a liability for any additional rental payments because the agreement with the City of Newark has not been finalized and the amount of any additional payments has not been determined (see Note J).

Airlines operating at JFK, LGA and EWR are required to pay the Port Authority, as compensation for the Port Authority's ongoing design, construction, operation and maintenance of certain public aircraft facilities (PAF), a flight fee, which is calculated generally on the basis of the direct and allocated costs of operating and maintaining such public aircraft facilities and the weight of aircraft using the airport. The flight fee agreements covering JFK and LGA expired on December 31, 2003, and on December 1, 2004, the Port Authority and the airlines representing a majority of the traffic at JFK and LGA entered into new flight fee agreements, effective as of January 1, 2004 for a twenty-year term expiring on December 31, 2023. The underlying methodology for recovering costs related to the PAF at JFK and LGA remained essentially intact; however, modifications were made which impacted the calculation of costs for which the airlines are responsible. The agreement governing the calculation of flight fees for signatory airlines operating at EWR expires December 31, 2018.

Note H – Regional Programs

1. The Port Authority has established, at the request of the Governors of New York and New Jersey, several facilities described briefly below under which certain projects, not a part of other Port Authority facilities, have been and/or will be undertaken.

- **Regional Development Facility** – This facility was established in conjunction with a program of up to \$250 million for transportation, economic development and infrastructure renewal projects authorized in connection with the Governors' Program of June 1983. Some of the projects in this program have been associated with other existing Port Authority facilities, while \$139 million was associated with the Regional Development Facility.
- **Regional Economic Development Program** – This facility was authorized in 1989 in conjunction with a centralized program of up to \$400 million for transportation, economic development and infrastructure renewal projects authorized pursuant to gubernatorial request. Some of the projects in this program have been associated with other existing Port Authority facilities, while \$326 million was associated with the Regional Economic Development Program.
- **Oak Point Rail Freight Link** – The Port Authority has participated with the New York State Department of Transportation in the development of the Oak Point Rail Freight Link, which was authorized in 1980. Of the \$102 million Port Authority's share, approximately \$63 million of the total project cost was funded with moneys made available through the Regional Development Facility and the Regional Economic Development Program.
- **New Jersey Marine Development Program** – This program, authorized in 1989, was undertaken to fund certain fishery, marine or port development projects in the State of New Jersey with a total cost of \$27 million. As of December 31, 2004, projects totaling approximately \$25 million have been associated with this program.
- **New York Transportation, Economic Development and Infrastructure Renewal Program** – This facility was authorized in 2000 in conjunction with a program of up to \$250 million for transportation, economic development and infrastructure renewal projects in the State of New York to be designated by the Governor. As of December 31, 2004, projects totaling approximately \$78 million have been associated with this program.
- **Regional Transportation Program** – This facility was authorized in 2002 in conjunction with a program to provide up to \$500 million, with \$250 million to be provided in each of the States of New York and New Jersey, for regional transportation initiatives to be designated by the respective Governor of each state. As of December 31, 2004, approximately \$79 million has been associated with the Regional Transportation Program.
- **Hudson-Raritan Estuary Resources Program** – This facility was authorized in 2001 in conjunction with a program to acquire certain real property in the Port District area of the Hudson-Raritan Estuary, in support of the Port Authority's capital program. The property would be acquired in consultation with the Governor of the State in which the property is located together with the respective state natural resources agencies and environmental organizations. The cost of any real property to be acquired under this program will not exceed \$60 million (\$30 million allocated to each state). As of December 31, 2004, approximately \$3 million has been associated with this program.
- **Regional Rail Freight Program** – This facility was authorized in 2001 to provide for the Port Authority to participate, in consultation with other governmental entities in the States of New York and New Jersey, in the development of rail freight projects to increase regional capacity. The Port Authority is authorized to provide up to \$50 million, with \$25 million designated for projects in each of the states by the respective governors. As of December 31, 2004, projects totaling approximately \$43 million have been associated with this program.

Notes to Consolidated Financial Statements

(continued)

As of December 31, 2004, \$1.3 billion has been expended for regional programs. Costs for these programs are deferred and amortized over the period benefited, up to a maximum of 15 years. The unamortized costs of the regional programs are as follows:

	Dec. 31, 2003	Project Expenditures	Amortization	Dec. 31, 2004
(In thousands)				
Regional Development Facility	\$ 78,621	\$ —	\$ 6,046	\$ 72,575
Regional Economic Development Program	251,879	2,957	20,691	234,145
Oak Point Rail Freight Link	21,189	—	1,630	19,559
New Jersey Marine Development Program	10,700	167	833	10,034
New York Transportation, Economic Development and Infrastructure Renewal Program	35,997	36,083	3,465	68,615
Regional Transportation Program	49,565	27,885	4,109	73,341
Hudson-Raritan Estuary Resources Program	2	2,999	167	2,834
Regional Rail Freight Program	6,211	36,000	1,736	40,475
Total unamortized costs of regional programs	\$454,164	\$106,091	\$38,677	\$521,578

2. Bi-State Initiatives – From time to time, the Port Authority makes payments to assist various bi-state regional operating initiatives. During 2004, the Port Authority expended approximately \$7 million on regional initiatives.

3. Buy-out of Fund for Regional Development – In 1983, the Fund for Regional Development (Fund) was established to sublease space in the World Trade Center that was previously held by the State of New York as tenant. An agreement between the Port Authority and the States of New York and New Jersey with respect to the Fund provided that net revenues from the subleasing were to be accumulated subject to disbursements to be made upon the concurrence of the Governors of New York and New Jersey. The assets, liabilities, revenues and expenses of the Fund were not consolidated with those of the Port Authority. In 1990, the Port Authority and the States of New York and New Jersey agreed to terminate the Fund. The present value (calculated at the time of the termination agreement) of the cost to the Port Authority of its purchase of the Fund's interest in the World Trade Center subleased space was approximately \$431 million. The liability for payments to the States of New York and New Jersey attributable to the Fund buy-out is further described in Note D.

Note I – Pension Plans and Other Employee Benefits

1. Pension Plans

a. Generally, full-time employees of the Port Authority (but not its subsidiaries) are required to join one of two cost-sharing multiple-employer defined benefit pension plans, the New York State and Local Employees' Retirement System (ERS) or the New York State and Local Police and Fire Retirement System (PFRS), collectively referred to as the "Retirement System". The New York State Constitution provides that membership in a pension or retirement system of the State or of a civil division thereof is a contractual relationship, the benefits of which may not be diminished or impaired.

The Retirement System provides retirement benefits related to years of service and final average salary, death and disability benefits, vesting of benefits after a set period of credited public service (generally five years), and optional methods of benefit payment. Depending upon the date of membership, retirement benefits differ as to the qualifying age or years-of-service requirement for service retirement, the benefit formula used in calculating the retirement allowance and the contributory or non-contributory nature of the plan. Contributions are not required from police personnel who are members of the PFRS or from those non-police employees who joined the ERS prior to July 27, 1976 or, effective October 1, 2000, members of the ERS with more than ten years of credited service. ERS members with less than ten years of credited service are required to contribute 3% of their annual gross wages to the ERS.

The Port Authority's payroll expense for 2004 was approximately \$565 million of which \$376 million and \$176 million represent the cost for employees covered by ERS and PFRS, respectively.

Notes to Consolidated Financial Statements

(continued)

Required Port Authority contributions to the Retirement System, including costs for participation in retirement incentive programs, are as follows:

Year Ended	ERS	% of Covered Payroll	PFRS	% of Covered Payroll
(In thousands)				
2004	\$37,194	6.7%	\$22,185	4.0%
2003	\$27,548	5.3%	\$11,818	2.2%
2002	\$ 3,350	0.6%	\$ 7,455	1.4%

These contributions cover the entire funding requirements for the current year and each of the two preceding years.

Employee contributions of approximately \$8 million to the ERS represented 1.5% of the total Port Authority covered payroll in 2004.

The Annual Report of the New York State and Local Retirement System, which provides details on valuation methods and ten year historical trend information, is available from the Comptroller of the State of New York, 110 State Street, Albany, NY 12236.

b. Employees of Port Authority Trans-Hudson Corporation (PATH) are not eligible to participate in the existing New York State Retirement System. PATH provides supplemental pension plans for most of its union employees. Annual PATH contributions to these plans are defined in the various collective bargaining agreements; no employee contributions are required. Eligibility for all benefits prior to normal retirement requires the completion of at least five years of vested service and depends upon years of credited service and monthly benefit rates in effect at the time of retirement. Trustees, appointed by the various unions, are responsible for the administration of these pension plans. PATH payroll expense in 2004 for these employees was approximately \$64 million. For the year 2004, contributions made by PATH in accordance with the terms of various collective bargaining agreements totaled approximately \$4 million, which represented approximately 5.5% of the total PATH covered payroll for 2004. Contributions in 2003 and 2002 were approximately \$4 million.

2. Other Employee Benefits

The Port Authority and PATH provide certain group health care, dental, vision and term life insurance benefits for active employees and for employees who have retired from the Port Authority or PATH (and for eligible dependents and survivors of active and retired employees). Contributions towards the costs of some of these benefits are required of certain participants. Benefits are provided through insurance companies whose premiums are based on the benefits paid during the year, or through plans under which benefits are paid by service providers on behalf of the Port Authority or PATH. The actuarially determined valuation of these benefits is reviewed annually for the purpose of estimating the present value of future benefits for active and retired employees and their dependents. As of December 31, 2004, the actuarially determined value of these benefits is approximately \$969 million consisting of the following:

	Port Authority	PATH	Total
(In millions)			
Retirees	\$695	\$71	\$766
Active	187	16	203
Total	\$882	\$87	\$969

The obligation accrued as of December 31, 2004 was approximately \$586 million. The difference between the actuarial present value of future benefits for prior service and the amount accrued as of December 31, 2004 is being amortized over a 14 year period.

The cost of providing health care, dental, vision and life insurance benefits, not including the accrual for prior service costs, totaled approximately \$158 million in 2004 and \$135 million in 2003, of which \$58 million in 2004 and \$52 million in 2003 were the costs associated with providing these benefits to retired employees and their eligible dependents.

Note J – Commitments and Certain Charges to Operations

1. On December 9, 2004, the Board of Commissioners of the Port Authority adopted the annual budget for 2005. Approval of a budget by the Board of Commissioners does not in itself authorize any specific expenditures, which are authorized from time to time by or as contemplated by other actions of the Board of Commissioners consistent with statutory, contractual and other commitments of the Port Authority, including agreements with the holders of its obligations.

2. At December 31, 2004, the Port Authority had entered into various construction contracts totaling approximately \$1.1 billion, which are expected to be completed within the next three years.

Notes to Consolidated Financial Statements

(continued)

3. The Port Authority carries insurance or requires insurance to be carried (if available) on or in connection with its facilities to protect against direct physical loss or damage and resulting loss of revenue and against liability in such amounts as it deems appropriate, considering self-insured retentions, exceptions, or exclusions of portions of facilities, and the scope of insurable hazards.

Insurance coverage as of December 31, 2004 is as follows:

a. Property damage and loss of revenue insurance program:

	General Coverage (excluding terrorism)	Terrorism Coverage
Limits:	<ul style="list-style-type: none"> • \$600 million, per occurrence, excess of deductible and self-insurance 	<ul style="list-style-type: none"> • \$25 million full terrorism coverage, per occurrence, excess of deductible and self-insurance • \$525 million TRIA* coverage, per occurrence, and \$75 million full terrorism coverage, per occurrence, in various layers, excess of \$25 million full terrorism coverage
Deductible:	<ul style="list-style-type: none"> • \$5 million per occurrence 	<ul style="list-style-type: none"> • \$5 million per occurrence
Self-Insurance:	<ul style="list-style-type: none"> • \$25 million in the aggregate, excess of deductible • Upon sustaining \$25 million in aggregate losses above the deductible, purchased coverage applies 	<ul style="list-style-type: none"> • \$25 million in the aggregate, excess of deductible • Upon sustaining \$25 million in aggregate losses above the deductible, purchased coverage applies

b. Public liability insurance program:

1. Aviation facilities

	General Coverage (excluding terrorism)	Terrorism Coverage
Limits:	<ul style="list-style-type: none"> • \$1 billion, per occurrence and in the aggregate, excess of deductible 	<ul style="list-style-type: none"> • \$1 billion aviation war risk coverage, per occurrence and in the aggregate, excess of deductible
Deductible:	<ul style="list-style-type: none"> • \$3 million per occurrence 	<ul style="list-style-type: none"> • \$3 million per occurrence

2. Non-aviation facilities

	General Coverage (excluding terrorism)	Terrorism Coverage
Limits:	<ul style="list-style-type: none"> • \$750 million per occurrence and in the aggregate, excess of deductible 	<ul style="list-style-type: none"> • \$50 million full terrorism coverage, per occurrence and in the aggregate, excess of deductible • \$200 million TRIA* coverage, per occurrence and in the aggregate, excess of \$50 million full terrorism coverage
Deductible:	<ul style="list-style-type: none"> • \$5 million per occurrence 	<ul style="list-style-type: none"> • \$5 million per occurrence
Self-insurance:	<ul style="list-style-type: none"> • 20% of \$25 million excess of deductible 	<ul style="list-style-type: none"> • 20% of \$25 million excess of deductible

* The Terrorism Risk Insurance Act of 2002

At December 31, 2003, public liability insurance totaled \$1 billion per occurrence for aviation facilities and \$750 million for non-aviation facilities per occurrence and in the aggregate.

During each of the past three years, claims payments have not exceeded insurance coverage.

In providing for uninsured potential losses, the Port Authority administers its self-insurance program by applications from the Consolidated Bond Reserve Fund and provides for losses by charging operating expense as liabilities are incurred.

A liability is recognized when it is probable that the Port Authority has incurred an uninsured loss and the amount of the loss can be reasonably estimated. The liability for unpaid claims is based upon the estimated cost of settling the claims, which includes a review of estimated claims expenses and estimated recoveries. Changes in the liability amounts in 2004 and 2003 were:

	Beginning Balance	Additions and Changes	Payments	Year-end Balance
	(In thousands)			
2004	\$8,654	\$7,076	\$8,314	\$7,416
2003	\$8,706	\$4,727	\$4,779	\$8,654

Notes to Consolidated Financial Statements

(continued)

4. The 2004 balance of "Other amounts receivable, net" on the Consolidated Statements of Net Assets consists of the anticipated recovery of \$873 million net book value of various assets which comprised components of the World Trade Center complex destroyed on September 11, 2001; \$96 million representing the balance due from the private full service vendor operating the plant at the Essex County Resource Recovery Facility, under the conditional sale agreement through which the vendor financed a portion of the construction costs of the plant; \$23 million in insurance receivable for workers' compensation related to September 11, 2001; \$5 million representing the balance due from Howland Hook Container Terminal, Inc. for the purchase of 7 cargo cranes; \$8 million representing an advance to AirRail Transit Consortium for operating and maintenance work; and approximately \$63 million in long-term receivables from Port Authority tenants. The Port Authority has contractual agreements to collect approximately \$17 million of the "Other amounts receivable, net" balance during 2005.

5. Upon execution of the lease extension covering the Port Authority's operation of JFK and LGA, the Port Authority made a payment to the City of New York in the amount of approximately \$780 million. Of the \$780 million, \$590 million is being amortized through 2050. Regarding the payment made to the City of New York, in 2003, the Port Authority recorded a liability of approximately \$689 million, representing the lump sum payment of \$500 million, the additional base rent payments of \$90 million due the City for each of years 2002 and 2003, and interest expense on the additional 2002 and 2003 base rent amounts.

Additionally, under the terms of the October 2002 agreements between the City of Newark and the Port Authority pertaining to EWR and Port Newark, if the Port Authority enters into a new lease with the City of New York relative to JFK and LGA, the City of Newark will have the right to amend the provisions of its lease with the Port Authority to conform to the terms agreed upon with the City of New York. The Port Authority has not recorded a liability for any additional rental payments because the agreement with the City of Newark has not been finalized and the amount of any additional payments has not been determined (see Note G).

6. The City of New York commenced several actions, the first in 1999, in the Supreme Court of the State of New York alleging that the Port Authority breached its agreement to make payments in-lieu-of taxes (PILOT) with respect to the World Trade Center. On November 24, 2004, the Port Authority and the City of New York entered into an amended agreement with respect to PILOT for the World Trade Center. With the execution of this amended agreement, various disputes, litigated matters and other proceedings with the City of New York with respect to the methodology for the calculation, collection and payment of PILOT, real property taxes and other related matters have been resolved, and the Port Authority and the City of New York have executed stipulations discontinuing with prejudice all pending litigation with respect to such matters.

Under the amended agreement with respect to PILOT, beginning January 1, 2004, the Port Authority will make a minimum annual payment equal to 12% of rent payments from the net lessees of One, Two, Four and Five World Trade Center and the retail components of the World Trade Center. Upon full development of the site, the Port Authority would pay the greater of the minimum annual payment or an increased amount, which escalates based upon a base amount of \$55 million, a multiplier based on values of comparable Manhattan commercial office space, and the amount of occupied space in the buildings that are developed on the site.

7. In October 2002 and November 2003, the Port Authority and the Newark Legal and Communications Center Urban Renewal Corporation received tax bills for the calendar years 2001, 2002 and 2003 totaling approximately \$200,000, based on the City of Newark's assessed value for the land upon which the Newark Legal and Communications Center is located. The Port Authority is contesting the City of Newark's allegation that the land upon which the Newark Legal and Communications Center is located is subject to real property tax.

8. Employees of PATH are not eligible to participate in the existing New York State Retirement System. However, for PATH employees who are not covered by collective bargaining agreements, the Port Authority has recognized, as a matter of policy, an obligation to provide supplemental payments resulting in amounts generally comparable to benefits available to similarly situated Port Authority employees. Such payments for PATH exempt employees totaled approximately \$2 million in both 2004 and 2003.

9. The 2004 balance of "Other noncurrent liabilities" consists of the following:

	Dec. 31, 2003	Additions	Deductions	Dec. 31, 2004
		(In thousands)		
Workers' compensation liability	\$43,480	\$15,690	\$15,858	\$43,312
PATH exempt employee supplemental	19,217	3,123	2,146	20,194
Surety and security deposits	10,703	1,661	1,931	10,433
Claims liability	8,654	7,076	8,314	7,416
Other	17,748	1,477	2,834	16,391
Gross other liabilities	\$99,802	\$29,027	\$31,083	97,746
Less current portion:				
Workers' compensation liability				15,858
PATH exempt employee supplemental				2,098
Total other noncurrent liabilities				\$79,790

Notes to Consolidated Financial Statements

(continued)

10. On December 31, 2003, the Port Authority and the Brooklyn Bridge Park Development Corporation (BBPDC) entered into a Memorandum of Understanding providing for the Port Authority to transfer its property rights in Piers 1, 2, 3 and 5 at the Brooklyn-Port Authority Marine Terminal to BBPDC, and to allocate approximately \$85 million for the development of a park on such property, subject to completion of certain environmental reviews and completion of the planning and authorization necessary for the BBPDC to acquire the property. The net book value of the piers as of December 31, 2004 was approximately \$20 million.

11. The liability for employee compensated absences at December 31, 2004 was approximately \$14 million, an increase of approximately \$1 million from December 31, 2003, primarily reflecting 2004 salary increases.

Note K – Information with Respect to the Events of September 11, 2001

The World Trade Center's components, which included two 110-story office towers (One and Two World Trade Center), two nine-story office buildings (Four and Five World Trade Center), an eight-story office building (Six World Trade Center), a 22-story hotel (Three World Trade Center), a 47-story office building (Seven World Trade Center), an electrical sub-station (Con Ed Substation) under Seven World Trade Center, a retail shopping mall, and a six level sub-grade area located below the World Trade Center complex, together with the PATH-World Trade Center rail station (PATH-WTC station) were destroyed as a result of the terrorist attacks of September 11, 2001.

On July 24, 2001, the Port Authority entered into net leases with respect to One, Two, Four and Five World Trade Center with single purpose entities established by Silverstein Properties, Inc. (the Silverstein net lessees), and with respect to the retail components of the World Trade Center, with a single purpose entity established by an affiliate of Westfield America, Inc. (Westfield). The terms of the 99-year net leases generally required the net lessees to pay in the aggregate \$616 million upon commencement of the net leases, base rent starting at \$102 million annually and, when applicable, a graduating percentage of gross revenues. The net leases do not provide for rent abatement before or during the restoration period.

The terms of the net leases establish both an obligation and concomitant right for the net lessees, at their sole cost and expense, to restore their net leased premises following a casualty whether or not the damage is covered by insurance proceeds in accordance, to the extent feasible, prudent and commercially reasonable, with the plans and specifications as they existed before the casualty or as otherwise agreed to with the Port Authority. The net lessees obtained property damage and business interruption insurance in a combined single limit of approximately \$3.5 billion per occurrence. Since the events of September 11, 2001, the insurance companies participating in this program have made advances of approximately \$2.1 billion under the program. Approximately \$1.6 billion of these advances has been used for the net lessees' business interruption expenses, including the payment of rent to the Port Authority, the prepayment of the mortgage loan entered into on July 24, 2001 by the Silverstein net lessees with GMAC Commercial Mortgage Corporation in the amount of approximately \$562 million, and the purchase by the Port Authority on December 23, 2003 of the retail net lessee from Westfield for \$140 million as well as certain of their World Trade Center redevelopment expenses. The Port Authority now owns 100% of the membership interest in and is the sole managing member of this single purpose entity, which is now known as "WTC Retail LLC".

Future minimum rentals (see Note G) include rentals of approximately \$97.2 billion attributable to the World Trade Center net leases described above. The inclusion of this amount in future rentals is predicated upon the assumption that the net lessees of various components of the World Trade Center will continue to meet their contractual commitments pertaining to their net leased properties, including those with respect to the payment of rent and the restoration of their net leased properties. The net lessees' ability to meet these contractual commitments may be affected by the outcome of certain pending and future litigation involving insurance and other matters, the nature of the downtown Manhattan real estate market, and coordination among various public and private sector entities involved in the redevelopment of downtown Manhattan.

Accounting

In 2001, the Port Authority reclassified and recognized as an operating expense the \$1.1 billion net book value of various assets consisting primarily of buildings, infrastructure and certain ancillary equipment that together comprised the components of the World Trade Center complex destroyed as a result of the September 11, 2001 terrorist attacks. A receivable in an amount equal to such net book value was recorded in 2001. As of December 31, 2004, the remaining balance of \$873 million of the receivable recognized in 2001 represents amounts at least equal to the presently expected value of the properties to be constructed by the net lessees at the World Trade Center site.

As of December 31, 2004, recoverable amounts of approximately \$1.37 billion comprising \$953 million in proceeds from the Port Authority's insurance policies and \$413 million from the Federal Emergency Management Agency (FEMA) have been recognized by the Port Authority. Of this amount, \$864 million has been recognized as revenue net of \$434 million of expenses related to the events of September 11, 2001, primarily the cost of office space necessary to replace the Port Authority's offices that were located at the World Trade Center, and the balance of approximately \$68 million has been applied to a portion of the outstanding receivable representing the net book value of the properties destroyed. The Port Authority received the maximum amount allocated by FEMA for reimbursement of the Port Authority's costs related to the events of September 11, 2001.

Schedule A – Revenues and Reserves

(Pursuant to Port Authority bond resolutions)

	Year ended December 31, 2004			2003
	Operating Fund	Reserve Funds	Combined Total	Combined Total
	(In thousands)			
Gross operating revenues:				
Rentals	\$ 877,306	\$ —	\$ 877,306	\$ 858,414
Tolls and fares	788,333	—	788,333	758,326
Aviation fees	714,766	—	714,766	705,302
Parking and other	269,413	—	269,413	234,261
Utilities	121,436	—	121,436	112,555
Rentals – Special Project Bond projects	93,570	—	93,570	95,193
Total gross operating revenues	2,864,824	—	2,864,824	2,764,051
Operating expenses:				
Employee compensation, including benefits	806,890	—	806,890	769,711
Contract services	545,404	—	545,404	543,927
Rents and amounts in-lieu-of taxes	252,658	—	252,658	237,014
Utilities	141,476	—	141,476	122,445
Materials, equipment and other	141,367	—	141,367	150,961
Interest on Special Project Bonds	93,570	—	93,570	95,193
Total operating expenses	1,981,365	—	1,981,365	1,919,251
Amounts in connection with operating asset obligations	(34,609)	—	(34,609)	(35,113)
Net (expenses) recoverables related to the events of September 11, 2001	(4,985)	—	(4,985)	664,211
Net operating revenues	843,865	—	843,865	1,473,898
Financial income:				
Income on investments	25,922	14,931	40,853	45,927
Net increase in fair value of investments	14,096	2,454	16,550	15,838
Contributions in aid of construction	81,173	—	81,173	57,568
Grants	13,396	—	13,396	34,501
Regional ferry pass-through grant program payments	—	—	—	(28,237)
Net revenues available for debt service and reserves	978,452	17,385	995,837	1,599,495
Debt service:				
Interest on bonds and other asset financing obligations	345,129	8,684	353,813	298,374
Debt maturities and retirements	211,870	—	211,870	698,280
Debt retirement acceleration	—	110,075	110,075	183,120
Repayment of asset financing obligations	—	10,737	10,737	6,329
Total debt service	556,999	129,496	686,495	1,186,103
Transfers to reserves	\$ (421,453)	421,453	—	—
Revenues after debt service and transfers to reserves		309,342	309,342	413,392
Direct investment in facilities		(285,441)	(285,441)	(542,260)
Change in appropriations for self-insurance		249	249	(15,201)
Increase (decrease) in reserves		24,150	24,150	(144,069)
Reserve balances, January 1		1,573,046	1,573,046	1,717,115
Reserve balances, December 31		\$1,597,196	\$ 1,597,196	\$1,573,046

See Notes to Consolidated Financial Statements.

Schedule B – Assets and Liabilities

(Pursuant to Port Authority bond resolutions)

	December 31, 2004				2003
	Operating Fund	Capital Fund	Reserve Funds	Combined Total	Combined Total
	(In thousands)				
ASSETS					
Current assets:					
Cash	\$ 38,027	\$ —	\$ 1,000	\$ 39,027	\$ 29,398
Investments	726,671	678,077	1,179,800	2,584,548	2,156,871
Current receivables, net	214,812	—	—	214,812	282,113
Other current assets	64,940	18,570	—	83,510	64,760
Restricted receivables in connection with PFC projects	14,651	—	—	14,651	15,153
Total current assets	1,059,101	696,647	1,180,800	2,936,548	2,548,295
Noncurrent assets:					
Restricted cash	9,737	—	—	9,737	10,295
Investments	179,215	113,606	416,396	709,217	1,069,794
Other amounts receivable, net	83,408	984,848	—	1,068,256	1,036,473
Deferred charges and other noncurrent assets	805,977	15,692	—	821,669	968,657
Amounts receivable – Special Project Bond projects	—	1,378,767	—	1,378,767	1,404,074
Invested in facilities	—	21,141,528	—	21,141,528	19,866,282
Total noncurrent assets	1,078,337	23,634,441	416,396	25,129,174	24,355,575
Total assets	2,137,438	24,331,088	1,597,196	28,065,722	26,903,870
LIABILITIES					
Current liabilities:					
Accounts payable	180,208	330,470	—	510,678	525,829
Accrued interest and other current liabilities	231,605	17,215	—	248,820	1,077,225
Accrued payroll and other employee benefits	86,513	—	—	86,513	99,942
Deferred income in connection with PFCs	14,651	—	—	14,651	15,153
Current portion bonds and other asset financing obligations	100,318	1,180,800	—	1,281,118	1,471,121
Total current liabilities	613,295	1,528,485	—	2,141,780	3,189,270
Noncurrent liabilities:					
Accrued pension and other noncurrent employee benefits	591,661	—	—	591,661	533,524
Other noncurrent liabilities	76,533	3,257	—	79,790	84,243
Amounts payable – Special Project Bonds	—	1,393,920	—	1,393,920	1,420,240
Bonds and other asset financing obligations	786,837	7,648,078	—	8,434,915	7,020,995
Total noncurrent liabilities	1,455,031	9,045,255	—	10,500,286	9,059,002
Total liabilities	2,068,326	10,573,740	—	12,642,066	12,248,272
NET ASSETS	\$ 69,112	\$ 13,757,348	\$ 1,597,196	\$ 15,423,656	\$ 14,655,598
Net assets are composed of:					
Facility infrastructure investment	\$ —	\$ 13,757,348	\$ —	\$ 13,757,348	\$ 13,013,191
Reserves	—	—	1,597,196	1,597,196	1,573,046
Appropriated reserves for self-insurance	69,112	—	—	69,112	69,361
Net assets	\$ 69,112	\$ 13,757,348	\$ 1,597,196	\$ 15,423,656	\$ 14,655,598

See Notes to Consolidated Financial Statements.

Schedule C – Analysis of Reserve Funds

(Pursuant to Port Authority bond resolutions)

	Year ended December 31, 2004			2003
	General Reserve Fund	Consolidated Bond Reserve Fund	Combined Total	Combined Total
	(In thousands)			
Balance, January 1	\$ 948,902	\$624,144	\$1,573,046	\$1,717,115
Transfers from operating fund*	119,888	318,950	438,838	609,701
	1,068,790	943,094	2,011,884	2,326,816
Applications:				
Repayment of asset financing obligations	–	10,737	10,737	6,329
Interest on asset financing obligations	–	8,684	8,684	6,860
Debt retirement acceleration	–	110,075	110,075	183,120
Direct investment in facilities	–	285,441	285,441	542,260
Self-insurance	–	(249)	(249)	15,201
Total applications	–	414,688	414,688	753,770
Balance, December 31	\$1,068,790	\$528,406	\$1,597,196	\$1,573,046

* Includes income on investments and fair market valuation adjustments of \$17 million and \$16 million for 2004 and 2003, respectively.

See Notes to Consolidated Financial Statements.

*Statistical & Other
Supplemental
Information*

Schedule D – Selected Statistical Financial Data

	2004	2003	2002	2001	2000	1999	1998	1997	1996	1995
	(In thousands)									
REVENUES AND EXPENSES										
Gross operating revenues: (a)	\$ –	\$ –	\$ –	\$ –	\$ –	\$ –	\$ –	\$2,205,647	\$2,154,120	\$2,082,624
Rentals	877,306	858,414	832,527	976,054	1,218,093	1,119,719	1,335,837	–	–	–
Tolls and fares	788,333	758,326	774,337	750,782	616,722	595,691	585,264	–	–	–
Aviation fees	714,766	705,302	672,175	560,951	382,604	363,015	62,995	–	–	–
Parking and other fees	269,413	234,261	197,912	202,864	219,985	247,695	226,832	–	–	–
Utilities	121,436	112,555	97,184	126,956	113,054	123,356	52,109	–	–	–
Rentals associated with Special Project Bonds	93,570	95,193	96,448	97,195	97,870	98,036	98,165	–	–	–
Gross operating revenues	2,864,824	2,764,051	2,670,583	2,714,802	2,648,328	2,547,512	2,361,202	2,205,647	2,154,120	2,082,624
Operating expenses: (a)	–	–	–	–	–	–	–	1,461,264	1,469,309	1,469,881
Employee compensation, including benefits	806,890	769,711	777,146	654,074	648,171	630,752	616,405	–	–	–
Contract services	545,404	543,927	622,781	600,686	619,462	560,425	505,775	–	–	–
Rents and amounts in-lieu-of taxes	252,658	237,014	140,614	96,401	131,431	133,556	50,764	–	–	–
Utilities	141,476	122,445	113,880	140,436	142,261	131,717	130,794	–	–	–
Materials, equipment and other	141,367	150,961	135,321	157,004	133,166	122,778	167,355	–	–	–
Interest on Special Project Bonds	93,570	95,193	96,448	97,195	97,870	98,036	98,165	–	–	–
Operating expenses	1,981,365	1,919,251	1,886,190	1,745,796	1,772,361	1,677,264	1,569,258	1,461,264	1,469,309	1,469,881
Net (expenses) recoverables related to the events of September 11, 2001	(4,985)	664,211	474,663	(270,334)	–	–	–	–	–	–
Amounts in connection with operating asset obligations	(34,609)	(35,113)	(35,960)	(36,696)	(37,188)	(35,957)	(35,605)	(34,675)	(33,126)	(32,254)
Net operating revenues	843,865	1,473,898	1,223,096	661,976	838,779	834,291	756,339	709,708	651,685	580,489
Financial income	57,403	61,765	95,962	143,381	162,811	104,657	118,362	103,873	98,707	70,830
Grants and contributions in aid of construction, net	94,569	63,832	44,594	40,070	–	–	–	–	–	–
Gain on purchase of Port Authority bonds	–	–	–	–	–	–	–	11	–	439
Net amounts associated with the 1993 WTC bombing	–	–	–	–	–	–	–	29,450	–	–
Net revenues available for debt service and reserves	995,837	1,599,495	1,363,652	845,427	1,001,590	938,948	874,701	843,042	750,392	651,758
DEBT SERVICE – OPERATIONS										
Interest on bonds and other asset financing obligations	(345,129)	(291,514)	(282,635)	(266,944)	(318,912)	(323,954)	(310,107)	(291,765)	(292,987)	(266,903)
Times, interest earned (b)	2.89	5.49	4.82	3.17	3.14	2.90	2.82	2.89	2.56	2.44
Debt maturities and retirements	(211,870)	(698,280)	(181,250)	(171,340)	(158,435)	(138,225)	(123,395)	(105,450)	(87,443)	(86,865)
Times, debt service earned (b)	1.79	1.62	2.94	1.93	2.10	2.03	2.02	2.12	1.97	1.84
DEBT SERVICE – RESERVES										
Direct investment in facilities	(285,441)	(542,260)	(433,747)	(462,129)	(404,388)	(233,260)	(242,311)	(246,232)	(162,471)	(268,711)
Debt retirement acceleration	(110,075)	(183,120)	(283,502)	(25,000)	(60,000)	–	–	–	(100,000)	(112,680)
Application from PFC program	–	–	–	–	–	–	–	–	–	105,000
Change in appropriations for self-insurance	249	(15,201)	(19,017)	14,270	(5,101)	(4,247)	(3,785)	(3,749)	5,057	(3,444)
Interest on bonds and other asset financing obligations	(8,684)	(6,860)	(15,828)	(27,964)	–	–	–	–	–	–
Repayment of asset financing obligations	(10,737)	(6,329)	(5,863)	(6,390)	(10)	(172)	(757)	(395)	(780)	(878)
Net increase (decrease) in reserves	24,150	(144,069)	141,810	(100,070)	54,744	239,090	194,346	195,451	111,768	17,277
RESERVE BALANCES										
January 1	1,573,046	1,717,115	1,575,305	1,675,375	1,620,631	1,381,541	1,187,195	991,744	879,976	862,699
December 31	\$ 1,597,196	\$ 1,573,046	\$ 1,717,115	\$ 1,575,305	\$ 1,675,375	\$ 1,620,631	\$ 1,381,541	\$ 1,187,195	\$ 991,744	\$ 879,976
Reserve fund balances represented by:										
General Reserve	1,068,790	948,902	907,075	880,041	848,095	839,671	823,581	754,619	618,960	605,167
Consolidated Bond Reserve	528,406	624,144	810,040	695,264	827,280	780,960	557,960	432,576	372,784	274,809
Total	\$ 1,597,196	\$ 1,573,046	\$ 1,717,115	\$ 1,575,305	\$ 1,675,375	\$ 1,620,631	\$ 1,381,541	\$ 1,187,195	\$ 991,744	\$ 879,976

(a) Data not available for categorizing operating revenues and expenses for the years prior to 1998.

(b) Debt service ratios excluding net (expenses) recoverables related to the events of September 11, 2001 and net amounts associated with the 1993 WTC bombing are as follows:

Times interest earned	2.90	3.21	3.15	4.18	–	–	–	2.79	–	–
Times debt service earned	1.80	0.94	1.92	2.55	–	–	–	2.05	–	–

NOTE: This selected financial data is prepared primarily from information contained in Schedules A, B and C and is presented for general information purposes only and is not intended to reflect specific applications of the revenues and reserves of the Port Authority, which are governed by statutes and its bond resolutions.

Schedule D – Selected Statistical Financial Data

(continued)

	2004	2003	2002	2001	2000	1999	1998	1997	1996	1995
(In thousands)										
OBLIGATIONS AT DECEMBER 31										
Consolidated Bonds and Notes	\$ 8,273,573	\$ 7,053,296	\$ 6,630,205	\$ 6,092,735	\$ 5,889,613	\$ 5,916,804	\$ 5,747,387	\$ 5,077,133	\$ 4,723,335	\$ 4,795,207
Fund buy-out obligation	422,050	423,330	424,513	425,606	419,696	414,246	409,219	404,582	400,305	396,360
Amounts payable –										
Special Project Bonds	1,393,920	1,420,240	1,442,450	1,457,705	1,468,965	1,477,275	1,479,975	1,482,675	548,575	472,675
Variable rate master notes	130,990	149,990	149,990	214,990	214,990	215,990	215,990	202,900	233,000	308,000
Commercial paper notes	280,315	249,200	180,408	356,880	251,885	123,595	124,910	124,445	163,850	176,955
Versatile structure obligations	544,000	554,500	560,600	566,000	571,300	575,900	580,400	584,200	484,700	285,200
Port Authority equipment notes	65,105	61,800	107,100	112,100	84,200	87,150	87,150	74,838	36,138	13,638
Total obligations	\$11,109,953	\$ 9,912,356	\$ 9,495,266	\$ 9,226,016	\$ 8,900,649	\$ 8,810,960	\$ 8,645,031	\$ 7,950,773	\$ 6,589,903	\$ 6,448,035
INVESTED IN FACILITIES AT										
DECEMBER 31	\$21,141,528	\$19,866,282	\$17,947,787	\$16,425,060	\$16,113,699	\$14,910,982	\$13,927,378	\$13,069,084	\$12,370,806	\$11,752,783
DEBT RETIRED THROUGH INCOME:										
Annual	\$ 332,682	\$ 887,729	\$ 470,615	\$ 202,730	\$ 218,445	\$ 138,396	\$ 124,153	\$ 105,845	\$ 188,223	\$ 95,423
Cumulative	\$ 5,855,303	\$ 5,522,621	\$ 4,634,892	\$ 4,164,277	\$ 3,961,547	\$ 3,743,102	\$ 3,604,706	\$ 3,480,553	\$ 3,374,708	\$ 3,186,485

NOTE: This selected financial data is prepared primarily from information contained in Schedules A, B and C and is presented for general information purposes only and is not intended to reflect specific applications of the revenues and reserves of the Port Authority, which are governed by statutes and its bond resolutions.

Schedule E – Information on Port Authority Operations

	Year ended December 31, 2004							2003
	Gross Operating Revenues	Operating Expenses(a)	Depreciation & Amortization	Income (Loss) from Operations	Interest & Other Expenses(b)	PFC Revenues & Grants	Net Income (Loss)	Net Income (Loss)
(In thousands)								
INTERSTATE TRANSPORTATION NETWORK								
G.W. Bridge & Bus Station	\$ 328,128	\$ 101,013	\$ 32,354	\$ 194,761	\$ 19,565	\$ 942	\$176,138	\$ 169,778
Holland Tunnel	88,105	70,312	9,893	7,900	13,913	—	(6,013)	966
Lincoln Tunnel	114,918	83,600	20,668	10,650	15,722	76	(4,996)	(6,554)
Bayonne Bridge	21,209	15,716	4,556	937	4,688	—	(3,751)	(4,393)
Goethals Bridge	83,860	22,020	6,372	55,468	8,398	—	47,070	53,406
Outerbridge Crossing	80,184	22,928	11,148	46,108	2,714	—	43,394	42,085
P.A. Bus Terminal	27,532	92,420	12,298	(77,186)	9,015	4,050	(82,151)	(74,485)
Subtotal – Tunnels, Bridges & Terminals	743,936	408,009	97,289	238,638	74,015	5,068	169,691	180,803
PATH	83,927	208,718	116,770	(241,561)	40,352	34,817	(247,096)	(205,726)
Journal Square Transportation Center	1,871	6,806	4,945	(9,880)	1,715	—	(11,595)	(11,825)
Subtotal – PATH	85,798	215,524	121,715	(251,441)	42,067	34,817	(258,691)	(217,551)
Ferry Service	621	2,354	158	(1,891)	1,062	—	(2,953)	(3,001)
Total Interstate Transportation Network	830,355	625,887	219,162	(14,694)	117,144	39,885	(91,953)	(39,749)
AIR TERMINALS								
LaGuardia	258,237	205,390	24,206	28,641	14,461	17,083	31,263	12,181
JFK International	753,558	566,895	81,659	105,004	52,783	14,821	67,042	67,713
Newark Liberty International	629,851	346,012	99,311	184,528	38,871	4,349	150,006	109,525
Teterboro	26,387	12,360	2,266	11,761	4,529	6,716	13,948	13,130
Heliport	1,825	2,502	701	(1,378)	26	—	(1,404)	(2,221)
Total Air Terminals	1,669,858	1,133,159	208,143	328,556	110,670	42,969	260,855	200,328
PORT COMMERCE								
Port Newark	64,407	45,904	14,184	4,319	13,108	—	(8,789)	(9,804)
Elizabeth Marine Terminal	57,237	30,235	28,673	(1,671)	29,254	11,715	(19,210)	3,419
Brooklyn	4,108	10,022	21,572	(27,486)	3,752	—	(31,238)	(37,309)
Red Hook	2,395	3,885	3,160	(4,650)	—	—	(4,650)	(5,665)
Howland Hook	4,870	6,627	4,464	(6,221)	14,626	—	(20,847)	(10,028)
Greenville Yard	294	3	—	291	—	—	291	291
Auto Marine	8,175	1,785	2,245	4,145	520	—	3,625	1,922
Total Port Commerce	141,486	98,461	74,298	(31,273)	61,260	11,715	(80,818)	(57,174)
ECONOMIC & WATERFRONT DEVELOPMENT								
Essex County Resource Recovery	62,527	64,297	1,412	(3,182)	3,942	—	(7,124)	(3,336)
Industrial Park at Elizabeth	863	115	208	540	96	—	444	187
Bathgate	4,125	1,315	1,444	1,366	195	—	1,171	(276)
Teleport	20,446	13,457	2,607	4,382	461	—	3,921	5,727
Newark Legal & Communications Center	3,401	1,397	3,554	(1,550)	515	—	(2,065)	(3,725)
Queens West	1,407	—	936	471	7,262	—	(6,791)	2,709
Hoboken South	7,421	33	3,579	3,809	1,147	—	2,662	1,115
Total Economic & Waterfront Development	100,190	80,614	13,740	5,836	13,618	—	(7,782)	2,401
WORLD TRADE CENTER								
World Trade Center	119,553	11,469	—	108,084	(8,469)	—	116,553	134,958
WTC Site	173	18,790	1,175	(19,792)	—	—	(19,792)	(22,901)
WTC Retail LLC	3,209	2,880	1,443	(1,114)	(191)	—	(923)	502
Total World Trade Center	122,935	33,139	2,618	87,178	(8,660)	—	95,838	112,559
Regional Programs	—	10,105	38,677	(48,782)	38,791	—	(87,573)	(89,956)
Net (expenses) recoverables related to the events of September 11, 2001	—	—	—	(4,985)	—	—	(4,985)	664,211
Total Port Authority Operations	2,864,824	1,981,365	556,638	321,836	332,823	94,569	83,582	792,620
PFC Program	—	—	57,578	(57,578)	—	125,532	67,954	90,416
Combined Total	\$2,864,824	\$1,981,365	\$614,216	\$ 264,258	\$332,823	\$ 220,101	\$151,536	\$ 883,036

(a) Amounts include all direct operating expenses and allocated expenses.

(b) Amounts include net interest expense (interest expense less financial income) and gain or loss generated by the disposition of assets, if any.

Schedule F – Information on Port Authority Capital Program Components

	Facilities, net Dec. 31, 2003*	Net Capital Expenditures	Depreciation	Facilities, net Dec. 31, 2004
(In thousands)				
INTERSTATE TRANSPORTATION NETWORK				
G.W. Bridge & Bus Station	\$ 641,539	\$ 70,608	\$ 32,354	\$ 679,793
Holland Tunnel	281,142	60,376	9,893	331,625
Lincoln Tunnel	465,209	57,332	20,668	501,873
Bayonne Bridge	131,385	17,188	4,556	144,017
Goethals Bridge	115,457	38,914	6,372	147,999
Outerbridge Crossing	122,488	4,707	11,148	116,047
P.A. Bus Terminal	312,531	26,637	12,298	326,870
Subtotal – Tunnels, Bridges & Terminals	2,069,751	275,762	97,289	2,248,224
PATH	971,395	103,606	46,253	1,028,748
Downtown Restoration Program	544,913	20,973	70,517	495,369
Permanent WTC PATH Terminal	10,634	51,058	–	61,692
Journal Square Transportation Center	80,378	8,917	4,945	84,350
Subtotal – PATH	1,607,320	184,554	121,715	1,670,159
Ferry Service	14,855	3,336	158	18,033
Total Interstate Transportation Network	3,691,926	463,652	219,162	3,936,416
AIR TERMINALS				
LaGuardia	483,450	72,013	24,206	531,257
JFK International	1,778,558	82,018	81,659	1,778,917
Newark Liberty International	1,976,499	104,080	99,311	1,981,268
Teterboro	50,947	26,433	2,266	75,114
Heliport	2,682	2	701	1,983
PFC Program	1,492,927	126,035	57,578	1,561,384
Total Air Terminals	5,785,063	410,581	265,721	5,929,923
PORT COMMERCE				
Port Newark	319,382	36,072	14,184	341,270
Elizabeth Marine Terminal	589,257	148,094	28,673	708,678
Brooklyn	109,388	11,761	21,572	99,577
Red Hook	67,067	254	3,160	64,161
Howland Hook	189,404	62,265	4,464	247,205
Auto Marine & Greenville Yards	48,824	223	2,245	46,802
Total Port Commerce	1,323,322	258,669	74,298	1,507,693
ECONOMIC & WATERFRONT DEVELOPMENT				
Essex County Resource Recovery	22,585	–	1,412	21,173
Industrial Park at Elizabeth	9,044	–	208	8,836
Bathgate	19,610	(103)**	1,444	18,063
Teleport	32,396	158	2,607	29,947
Newark Legal & Communications Center	51,610	–	3,554	48,056
Queens West	99,375	8,624	936	107,063
Hoboken South	77,723	837	3,579	74,981
Total Economic & Waterfront Development	312,343	9,516	13,740	308,119
WORLD TRADE CENTER				
World Trade Center	80,161	30	–	80,191
WTC Site	70,917	30,600	1,175	100,342
WTC Retail LLC	139,964	1,370	1,443	139,891
Total World Trade Center	291,042	32,000	2,618	320,424
FACILITIES, NET	\$11,403,696	\$1,174,418	\$575,539	\$12,002,575
REGIONAL PROGRAMS	\$ 454,164	\$ 106,091	\$ 38,677	\$ 521,578

* Dec. 31, 2003 Facilities, net for JFK and EWR was adjusted to exclude \$216 million and \$86 million, respectively, for PFC eligible costs for which PFC collections have yet to be received. These amounts were reclassified to the PFC Program.

** Includes adjustments for prior period costs.

Schedule G – Facility Traffic*

TUNNELS AND BRIDGES

(Eastbound Traffic)	2004	2003
All Crossings		
Automobiles	115,219,000	112,869,000
Buses	3,123,000	3,041,000
Trucks	8,205,000	7,910,000
Total vehicles	126,547,000	123,820,000

George Washington Bridge

Automobiles	49,377,000	48,354,000
Buses	606,000	594,000
Trucks	4,219,000	4,023,000
Total vehicles	54,202,000	52,971,000

Lincoln Tunnel

Automobiles	18,541,000	18,120,000
Buses	2,051,000	1,973,000
Trucks	1,141,000	985,000
Total vehicles	21,733,000	21,078,000

Holland Tunnel

Automobiles	16,353,000	15,790,000
Buses	221,000	232,000
Trucks	389,000	544,000
Total vehicles	16,963,000	16,566,000

Staten Island Bridges

Automobiles	30,948,000	30,605,000
Buses	245,000	242,000
Trucks	2,456,000	2,358,000
Total vehicles	33,649,000	33,205,000

Cumulative PA Investment in Tunnels and Bridges

(In thousands)	\$2,877,063	\$2,633,246
----------------	-------------	-------------

PATH

	2004	2003
Total passengers	57,768,000	47,920,000
Passenger weekday average	194,000	160,000

Cumulative PA Investment in PATH

(In thousands)	\$2,343,740	\$2,170,285
----------------	-------------	-------------

MARINE TERMINALS

	2004	2003
All Terminals		
Containers	2,401,042	2,231,931
General cargo(a)(Metric tons)	25,474,164	23,538,926

New Jersey Marine Terminals

Containers	2,084,590	1,903,367
------------	-----------	-----------

New York Marine Terminals

Containers	316,452	328,564
------------	---------	---------

Cumulative PA Investment in Marine Terminals

(In thousands)	\$2,338,597	\$2,078,759
----------------	-------------	-------------

AIR TERMINALS

	2004	2003
Totals at the Three Major Airports		
Plane movements	1,112,800	1,020,000
Passenger traffic	93,823,100	83,669,800
Cargo-tons	2,796,900	2,722,800
Revenue mail-tons	194,200	188,400

John F. Kennedy

International Airport		
Plane movements	308,400	268,400
Passenger traffic		
Domestic	20,088,400	16,436,900
International	17,429,700	15,299,600
Cargo-tons	1,787,500	1,734,900

LaGuardia Airport

Plane movements	383,000	360,000
Passenger traffic		
Domestic	23,119,300	21,435,300
International	1,295,600	1,047,500
Cargo-tons	14,100	12,300

Newark Liberty

International Airport		
Plane movements	421,400	391,600
Passenger traffic		
Domestic	23,040,100	21,781,900
International	8,850,000	7,668,600
Cargo-tons	995,300	975,600

Cumulative PA Investment in Air Terminals

(In thousands)	\$9,863,413	\$9,454,165
----------------	-------------	-------------

TERMINALS

	2004	2003
All Bus Facilities		
Passengers	70,687,400	69,427,600
Bus movements	3,528,800	3,446,700

Port Authority Bus Terminal

Passengers	56,335,000	55,925,000
Bus movements	2,253,400	2,237,000

George Washington Bridge

Bus Station		
Passengers	7,394,400	6,817,600
Bus movements	332,400	303,700

PATH Journal Square Transportation Center

Bus Station		
Passengers	6,958,000	6,685,000
Bus movements	943,000	906,000

Cumulative PA Investment in Bus Facilities

(In thousands)	\$735,604	\$698,449
----------------	-----------	-----------

	2004	2003
Total Port Authority Cumulative Invested in facilities, including the above		
(In thousands)	\$21,141,528	\$19,866,282

(a) International oceanborne general cargo as recorded in the New York-New Jersey Customs District.

* Some 2003 numbers reflect revised data.

2004 Annual Report

Kevin Kirchman
Managing Editor

Tina Hansen
Senior Editor

Mariana Lopez, John Olberding
Deputy Editors

Tashmin Shamsundar
Financial Editor

Wilson Pacheco, Thomas D'Alessio
Financial Section

Eileen Parisi
Production Supervision

Gertrude Gilligan, William Vasquez, Paul Warchol
Photography

G2 Worldwide Inc.
Strategic Concepting and Design

Prepared by the **Public Affairs** and
Comptroller's Departments of
The Port Authority of New York and New Jersey
225 Park Avenue South
New York, NY 10003
www.panynj.gov

*225 Park Avenue South
New York, NY 10003*

www.panynj.gov

