

66c  
974.905  
044.4  
c.1

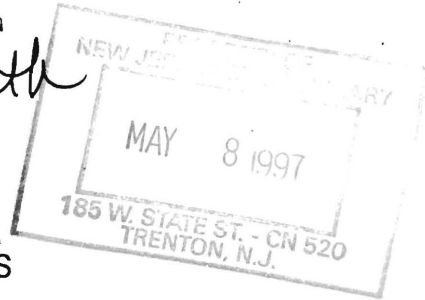
**DEPARTMENT OF HUMAN SERVICES**  
**INTER-OFFICE COMMUNICATION**

**DATE** April 21, 1997

**TO** William Waldman  
Commissioner

**FROM** Karen Highsmith  
Director

*K Highsmith*



**SUBJECT** CURRENT PROGRAM STATISTICS

Attached please find CURRENT PROGRAM STATISTICS, including the FDP Statistical Summary for February 1997. Also included are explanatory notes for the various data elements. Should you have any questions, please feel free to call me.

KH:kas:c

Attachments

c Guhl  
Grant  
Miller  
Tencza

*State of New Jersey*  
*Department of Human Services*  
*Division of Family Development*



**CURRENT  
PROGRAM  
STATISTICS**

**February 1997**  
**Karen Highsmith, Director**

State of New Jersey  
Department of Human Services  
Division of Family Development

CURRENT PROGRAM STATISTICS  
February 1997

TABLE OF CONTENTS

Page

<b>Highlights of Current Program Statistics</b> .....	1-3
<b>Statistics by County, February 1997</b>	
Table 1 AFDC .....	4
Graph 1 Current AFDC Families .....	4
Table 2 Food Stamp Program .....	5
Graph 2 Current Food Stamp Households/Persons .....	5
Table 3 AFDC/SSI Emergency Assistance Program .....	6
Graph 3 Current AFDC Families Receiving Emergency Assistance .....	6
Table 4 Family Development Program .....	7
<b>State Summary, 1995 - 1997</b>	
Table 5 AFDC, February 1995 - February 1997 .....	8
Graph 4 Families Receiving AFDC, 2/95 - 2/97 .....	8
Table 6 Food Stamp Program, February 1995 - February 1997 .....	9
Graph 5 Food Stamp Households, 2/95 - 2/97 .....	9
Graph 6 Food Stamp Recipients, 2/95 - 2/97 .....	10
Table 7 AFDC Emergency Assistance Program, February 1995 - February 1997 .....	11
Graph 7 AFDC Families Receiving Emergency Assistance, 2/95 - 2/97 .....	11
Table 8 JOBS/FDP Participation Rates, by County and Statewide, February 1995 - February 1997 .....	12
Graph 8 JOBS/FDP Participation Rates, 2/95 - 2/97 .....	12-13
Table 9 General Assistance, and GA Emergency Assistance, November 1994 - November 1996 .....	14
Graph 9 General Assistance Recipients, 11/94-11/96 .....	14
Table 10 Child Support and Paternity, Fiscal Years 1996-1997 .....	15
<b>Explanatory Notes</b> .....	16-17
<b>Supplement</b>	
Table 11 General Assistance Recipients and EA Payments by County and Municipality, November 1996 .....	18

## Highlights of Current Program Statistics

### AFDC (Tables 1 and 5, Graphs 1 and 4)

#### 103,200 eligible families in New Jersey were receiving AFDC as of the end of February 1997:

- **93,400** single head of household families (Regular AFDC, C segment).
- Among two-parent families, about **2300** Unemployed Parent families (F Segment) and **2700** State AFDC families (N Segment).
- **4900** Medicaid Only families.
- The largest numbers of families by county: Essex with **26,400**, Hudson with **16,400**, and Camden County with **12,100**. (53.2 percent of all AFDC families)
- Other counties ranged from **138** families in Hunterdon to **6,674** in Passaic County, with six counties below **1000** families.

#### There were about 1000 fewer eligible AFDC families in February 1997 than in January 1997 and a decline more than 18,000 over the past two years.

- There were about **1100** fewer eligible C segment families in February 1997 than in January 1997 and almost **16,000** less than two years ago.
- F segment families declined from nearly **3900** in February 1995 to about **2300** in February 1997.
- State AFDC (N segment) was about **3300** in February 1995 and slowly declined to **2700** by February 1997.
- Medicaid Only families averaged nearly **5200** for 1995 and less than **5100** for 1996. There were **200** less Medicaid Only families in February 1997 than a year earlier.

### FOOD STAMP PROGRAM (Tables 2 and 6, Graphs 2, 5, and 6)

#### At the end of February 1997, 204,700 households were participating in the Food Stamp Program:

- **96,300** AFDC households with **307,000** persons.
- **108,500** Other Low Income households with **164,500** persons.
- With a total of close to **472,000** persons, including less than **227,000** adults and about **245,000** children
- **48.6 percent** of the households were in Essex (**52,000**), Hudson (**28,100**) and Camden (**19,900**) Counties.
- The number of adults exceeded the number of children in Food Stamp households in **eight** counties (Bergen, Burlington, Hunterdon, Monmouth, Morris, Somerset, Sussex, and Warren).

**Food Stamp households in New Jersey remained in the 220,000 to 223,000 range from February 1995 through June 1996, except for a spike in March 1995. From May 1996 to February 1997 total Food Stamp households declined from almost 223,000 to less than 205,000.**

- The number of Other Low Income households has exceeded the number of AFDC(FS) households since November 1995, with a difference of more than **12,000** in February 1997. The number of Other Low Income households receiving Food Stamps was about **108,000** in February 1995, peaked at close to **115,000** in May 1996, then returned to the February 1995 level two years later. There were almost **114,000** AFDC(FS) households in February 1995 and about **96,000** in February 1997.
- After a peak of more than **529,000** in March 1995, the number of Total Recipients has been moving downward. Near **515,000** from July 1995 through May 1996, the level dropped substantially and was less than **472,000** by February 1997. This is a total decline of close to **58,000** or almost **11 percent** since March 1995.
- The number of Recipient Adults averaged **246,000** for 1994 through the first five months of 1996. From May 1996 through February 1997 the number declined by **20,000** from about **247,000** to **227,000**.
- After a peak of more than **279,000** in March 1995, the number of Recipient Children has been moving downward. By January 1997 the level was down more than **12 percent** to **245,000**.

## **EMERGENCY ASSISTANCE** (Tables 3, 7 and 9, Graphs 3, 7 and 9)

**In February 1997 Emergency Assistance (EA) payments were made for 3847 eligible AFDC families and 261 SSI recipients in New Jersey. For AFDC families this included payments for:**

- **1473** families with Temporary Rental Assistance (TRA)
- **296** motel placements and **292** emergency shelter placements
- **1786** families accounted for all other AFDC-EA payments, including back rent, back utilities, security deposits, furnishings, clothing and food allowance, or transitional housing.
- EA payments were made for **1048** AFDC families in Essex County and **494** in Middlesex. All other counties accounted for between **3** and **367** AFDC-EA payments, with eleven **below 100**.

**In the past two years, the average number of EA payments for AFDC families was 5800 in 1995, and 4800 in 1996. The February 1997 level of 3847 was a two year low.**

- The number of TRA payments provided for AFDC families each month has declined steadily from more than **2500** in February 1995 to less than **1500** in February 1997.
- Emergency Shelter payments have been provided for **around 300 to 400** families each month in the last two years. Payments for Motel Housing declined from close to **500** in early 1995 to about **300** in 1996-1997.
- Other EA payments were made for an average of nearly **2800** families in January 1995 compared to less than **1800** in January 1997.

**For 1994 there were an average of 7800 GA EA recipients, 7400 for 1995, and 7000 for the first eleven months of 1996. TRA payments were made to an average of 4700 recipients in 1994, 4400 in 1995, and less than 4200 in the first eleven months of 1996.**

## JOBS/FDP PARTICIPATION RATES (Table 8, Graph 8)

In February 1997 the Statewide JOBS/FDP participation rate was 29.4 percent, one half point below the January 1997 rate. This is comparable to the seasonal trough of early 1996, though the February level is more than six percentage points above February 1996, and more than nine percentage points above two years ago when the rate was 20.3 percent. A clear upward shift has been evident over the past two years. Only one county was below 20 percent in February.

- Most counties have shown upward movement in participation rates in the past two years, including Burlington, Camden, Cape May, Essex, Hudson, Hunterdon, Middlesex, Monmouth, and Passaic. Atlantic, Cumberland and Warren have maintained high participation rates. Salem, Somerset and Sussex have generally been high but with large month-to-month fluctuations. Morris increased markedly in 1995 and remains near 100 percent. Bergen, Gloucester, Mercer, Ocean and Union have had little or no increase in the past two years.
- For December 1996 County rates were distributed as follows:
 

<b>Under 20 percent</b>	-- Camden
<b>20 to 29 percent</b>	-- Bergen, Cape May, Essex, Gloucester, Hudson, Mercer, Ocean, Union
<b>30 to 39 percent</b>	-- Burlington, Hunterdon, Monmouth, Passaic
<b>40 to 49 percent</b>	-- Middlesex, Salem, Sussex, Warren
<b>Over 50 percent</b>	-- Atlantic, Cumberland, Morris, Somerset
- From January to February 1997, participation rates decreased in 12 counties.

## GENERAL ASSISTANCE (Table 9, Graph 9)

November 1996 (the latest available information) was the fifth consecutive month with less than 31,000 GA recipients. GA recipients averaged 36,200 for 1994, 33,600 in 1995 and 32,200 for the first eleven months of 1996.

- The number of employable GA recipients closely mirrored the changes in total GA recipients. The November level was the sixth consecutive month **below 21,000**. Employable GA recipients averaged about **24,400** for 1994, about **22,400** in 1995 and **21,400** for the first eleven months of 1996.
- Over the two year period Unemployable GA recipients remained within a relatively narrow range. The level remained around **11,000 to 12,000** from November 1994 through October 1995. It declined to about **10,000** from November 1995 through January 1996, and remained between **10,000 and 11,000** through November 1996.

## CHILD SUPPORT AND PATERNITY (Table 10)

The total distribution of collections of the Child Support and Paternity Program increased by 11.1 percent from \$250 million in the first six months of SFY 1996 (July - December 1995) to \$278 million in the first six months of SFY 1997 (July - December 1996).

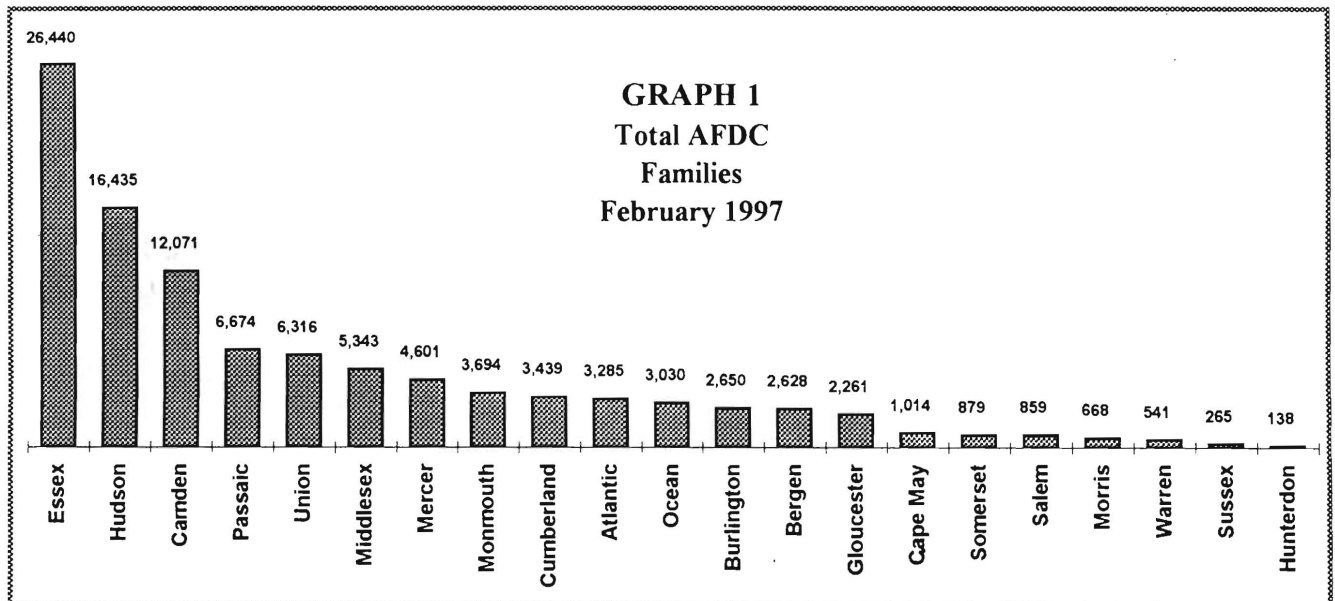
New Jersey Department of Human Services  
 Division of Family Development

**Table 1**  
**AFDC Program**  
**NUMBER OF APPLICATIONS AND TERMINATIONS DURING REPORT MONTH, AND**  
**NUMBER OF ELIGIBLE FAMILIES RECEIVING AFDC AT END OF REPORT MONTH**

February 1997

County	Applications Approved	Terminations	Regular AFDC (C Segment)	Unemployed Parents(F)	State AFDC(N)	Medicaid Only	Total AFDC
ATLANTIC	147	179	3,029	64	57	135	3,285
BERGEN	104	128	2,347	102	102	77	2,628
BURLINGTON	169	203	2,297	66	76	211	2,650
CAMDEN	574	748	10,640	387	339	705	12,071
CAPE MAY	60	91	835	47	60	72	1,014
CUMBERLAND	261	257	2,949	136	180	174	3,439
ESSEX	615	1,073	25,220	327	207	686	26,440
GLOUCESTER	165	229	1,936	82	60	183	2,261
HUDSON	397	581	14,767	240	548	880	16,435
HUNTERDON	12	11	102	6	7	23	138
MERCER	380	414	4,084	82	107	328	4,601
MIDDLESEX	285	394	4,468	196	229	450	5,343
MONMOUTH	222	241	3,441	68	127	58	3,694
MORRIS	42	51	609	17	12	30	668
OCEAN	195	184	2,532	132	130	236	3,030
PASSAIC	265	337	6,198	201	213	62	6,674
SALEM	54	62	765	11	32	51	859
SOMERSET	95	101	744	27	29	79	879
SUSSEX	33	34	214	7	1	43	265
UNION	297	372	5,721	90	160	345	6,316
WARREN	38	38	461	22	24	34	541
<b>NJ TOTAL</b>	<b>4,410</b>	<b>5,728</b>	<b>93,359</b>	<b>2,310</b>	<b>2,700</b>	<b>4,862</b>	<b>103,231</b>

Data is derived from NJ Division of Family Development's FAMIS report #FF-012



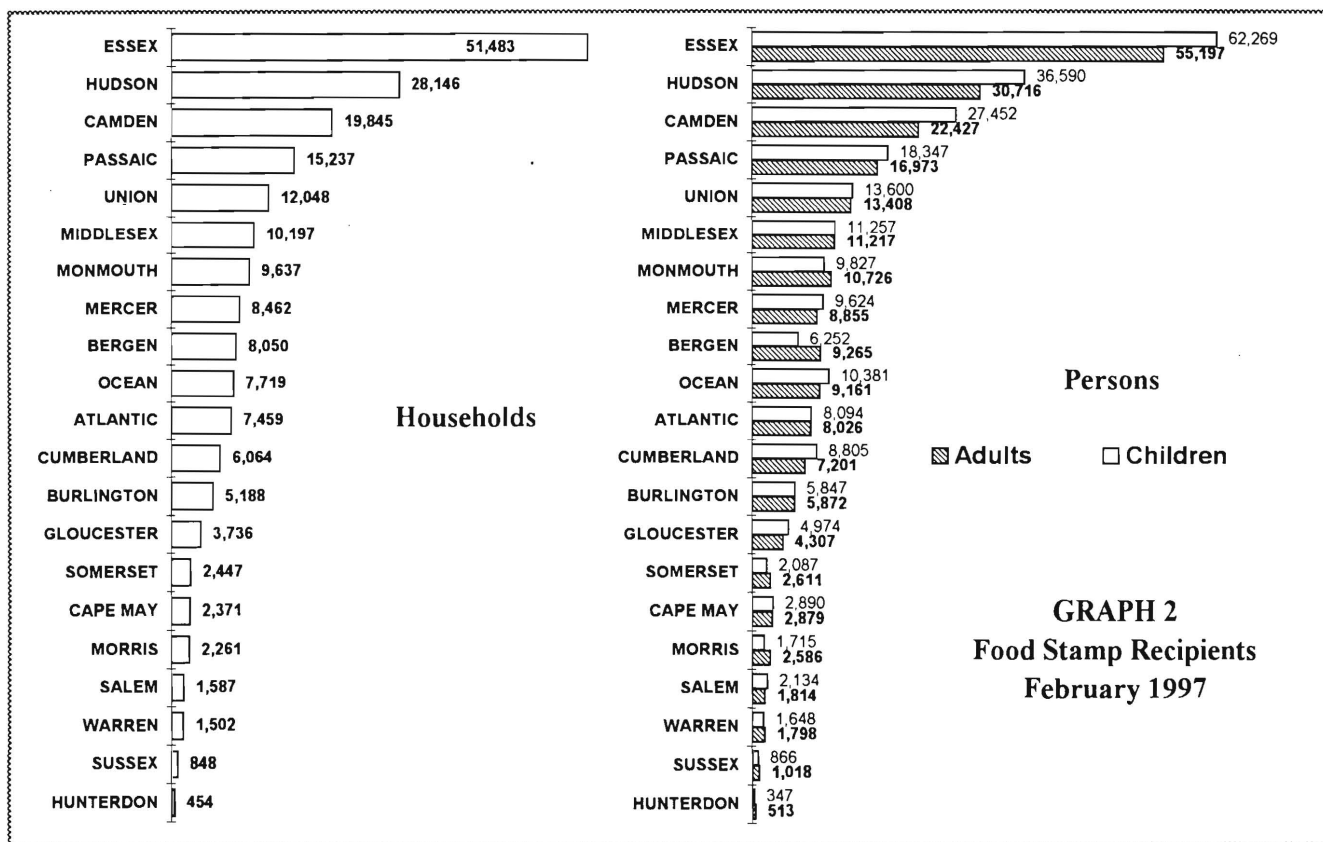
New Jersey Department of Human Services  
Division of Family Development

**Table 2**  
**FOOD STAMP Program**  
**NUMBER OF ATP'S ISSUED TO HOUSEHOLDS, PERSONS, ADULTS**  
**AND CHILDREN AT THE END OF THE REPORT MONTH**  
**February 1997**

County	HOUSEHOLDS			PERSONS				
	AFDC	Other low income	TOTAL	TOTAL	AFDC	Other low income	Adults	Children
ATLANTIC	2,954	4,505	7,459	16,120	9,587	6,533	8,026	8,094
BERGEN	2,367	5,683	8,050	15,517	7,051	8,466	9,265	6,252
BURLINGTON	2,271	2,917	5,188	11,719	7,093	4,626	5,872	5,847
CAMDEN	11,217	8,628	19,845	49,879	37,293	12,586	22,427	27,452
CAPE MAY	1,052	1,319	2,371	5,769	3,564	2,205	2,879	2,890
CUMBERLAND	3,366	2,698	6,064	16,006	11,568	4,438	7,201	8,805
ESSEX	25,693	25,790	51,483	117,466	80,559	36,907	55,197	62,269
GLOUCESTER	2,064	1,672	3,736	9,281	6,545	2,736	4,307	4,974
HUDSON	15,351	12,795	28,146	67,306	47,412	19,894	30,716	36,590
HUNTERDON	118	336	454	860	368	492	513	347
MERCER	4,025	4,437	8,462	18,479	12,592	5,887	8,855	9,624
MIDDLESEX	4,710	5,487	10,197	22,474	14,354	8,120	11,217	11,257
MONMOUTH	3,556	6,081	9,637	20,553	11,406	9,147	10,726	9,827
MORRIS	561	1,700	2,261	4,301	1,677	2,624	2,586	1,715
OCEAN	3,125	4,594	7,719	19,542	10,558	8,984	9,161	10,381
PASSAIC	6,197	9,040	15,237	35,320	20,775	14,545	16,973	18,347
SALEM	804	783	1,587	3,948	2,670	1,278	1,814	2,134
SOMERSET	760	1,687	2,447	4,698	2,286	2,412	2,611	2,087
SUSSEX	249	599	848	1,884	767	1,117	1,018	866
UNION	5,309	6,739	12,048	27,008	17,234	9,774	13,408	13,600
WARREN	530	972	1,502	3,446	1,707	1,739	1,798	1,648
<b>NJ TOTAL</b>	<b>96,279</b>	<b>108,462</b>	<b>204,741</b>	<b>471,576</b>	<b>307,066</b>	<b>164,510</b>	<b>226,570</b>	<b>245,006</b>

ATP - Authorization to Participate

Data is derived from NJ Division of Family Development's FAMIS report # FB-160.



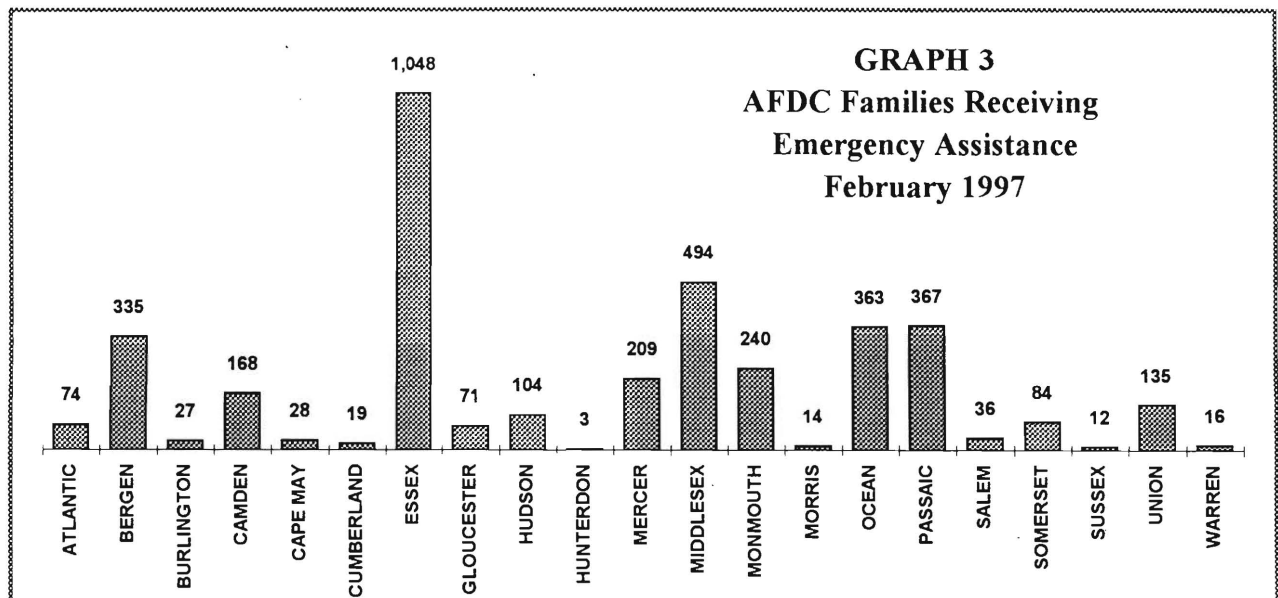
New Jersey Department of Human Services  
Division of Family Development

**Table 3**  
**AFDC/SSI EMERGENCY ASSISTANCE**  
**NUMBER OF ELIGIBLE FAMILIES RECEIVING EMERGENCY ASSISTANCE PAYMENTS**  
**(UNDUPLICATED CASES)**

February 1997

County	AFDC Families Receiving Emergency Assistance					SSI Recipients Receiving EA
	TOTAL AFDC-EA	Temporary Rental Assist.	Motel Housing	Emergency Shelter	Other AFDC-EA	
ATLANTIC	74	18	7	24	25	13
BERGEN	335	188	32	29	86	13
BURLINGTON	27	2	2	16	7	0
CAMDEN	168	75	0	18	75	10
CAPE MAY	28	7	5	2	14	1
CUMBERLAND	19	1	3	5	10	0
ESSEX	1,048	470	28	71	479	39
GLOUCESTER	71	43	6	15	7	3
HUDSON	104	14	2	16	72	8
HUNTERDON	3	0	0	1	2	0
MERCER	209	95	17	1	96	14
MIDDLESEX	494	281	17	12	184	32
MONMOUTH	240	111	23	6	100	6
MORRIS	14	0	1	7	6	7
OCEAN	363	125	119	3	116	65
PASSAIC	367	6	6	22	333	31
SALEM	36	8	10	0	18	0
SOMERSET	84	12	8	23	41	4
SUSSEX	12	0	2	4	6	3
UNION	135	17	1	17	100	11
WARREN	16	0	7	0	9	1
<b>NJ TOTAL</b>	<b>3,847</b>	<b>1,473</b>	<b>296</b>	<b>292</b>	<b>1,786</b>	<b>261</b>

Derived from NJ Division of Family Development FAMIS Reports #FM457 and #FM430-03A



New Jersey Department of Human Services  
Division of Family Development

**TABLE 4**  
**FAMILY DEVELOPMENT PROGRAM**  
**STATISTICAL SUMMARY**

COUNTY	SNAPSHOT OF ACTIVITY AS OF FEBRUARY 1997				ACTIVITY FOR MONTH OF FEBRUARY 1997					
	TOTAL NONEXMT JOBS/FDP RECI- PIENTS	EMPLOYMENT DIRECTED ACTIVITIES(1)			PARTIC IN EDAs & RECEIVE SUPPORT SERVICES		PARTIC W/1st C M INTV	# EMPL THIS MONTH & STILL REC AFDC	# CLSD ON FAMIS RE: EARNINGS (2)	POST AFDC & REC CHILD CARE
		TRAIN- ING	EDUCA- TION	JOB SEARCH	TREs	CHILD CARE				
ATLANTIC	1,078	342	115	50	273	141	135	38	51	175
BERGEN	1,657	244	111	73	211	123	53	22	52	90
BURLINGTON	1,260	303	89	110	354	171	150	50	57	181
CAMDEN	8,251	671	451	111	768	420	429	52	147	268
CAPE MAY	562	90	21	29	55	24	60	3	19	12
CUMBERLAND	1,454	239	119	146	387	207	108	59	74	130
ESSEX	16,364	1,729	1,022	285	2,066	1,205	534	111	230	198
GLOUCESTER	989	195	48	26	296	60	96	14	48	73
HUDSON	10,295	1,357	965	281	1,929	874	229	62	174	287
HUNTERDON	81	12	10	11	11	4	9	3	7	13
MERCER	2,959	325	237	19	203	205	19	25	77	125
MIDDLESEX	2,798	377	219	194	427	205	215	85	101	205
MONMOUTH	2,378	299	191	191	446	288	80	39	73	193
MORRIS	308	229	34	66	45	62	40	10	13	59
OCEAN	1,735	181	82	131	106	68	70	34	43	157
PASSAIC	3,583	821	285	103	840	337	146	30	92	145
SALEM	359	73	84	19	117	60	14	5	15	49
SOMERSET	433	59	58	17	78	51	11	9	11	42
SUSSEX	150	24	22	40	33	28	12	13	11	33
UNION	3,712	330	193	181	402	169	58	21	94	138
WARREN	340	54	37	31	16	17	6	7	21	18
STATE	60,746	7,954	4,393	2,114	9,063	4,719	2,474	692	1,410	2,591

(1) - The number of participants receiving support services may occasionally exceed the number actively participating in EDAs. This can result from extended assessment or evaluation activities, or the issuance of bridge payments.

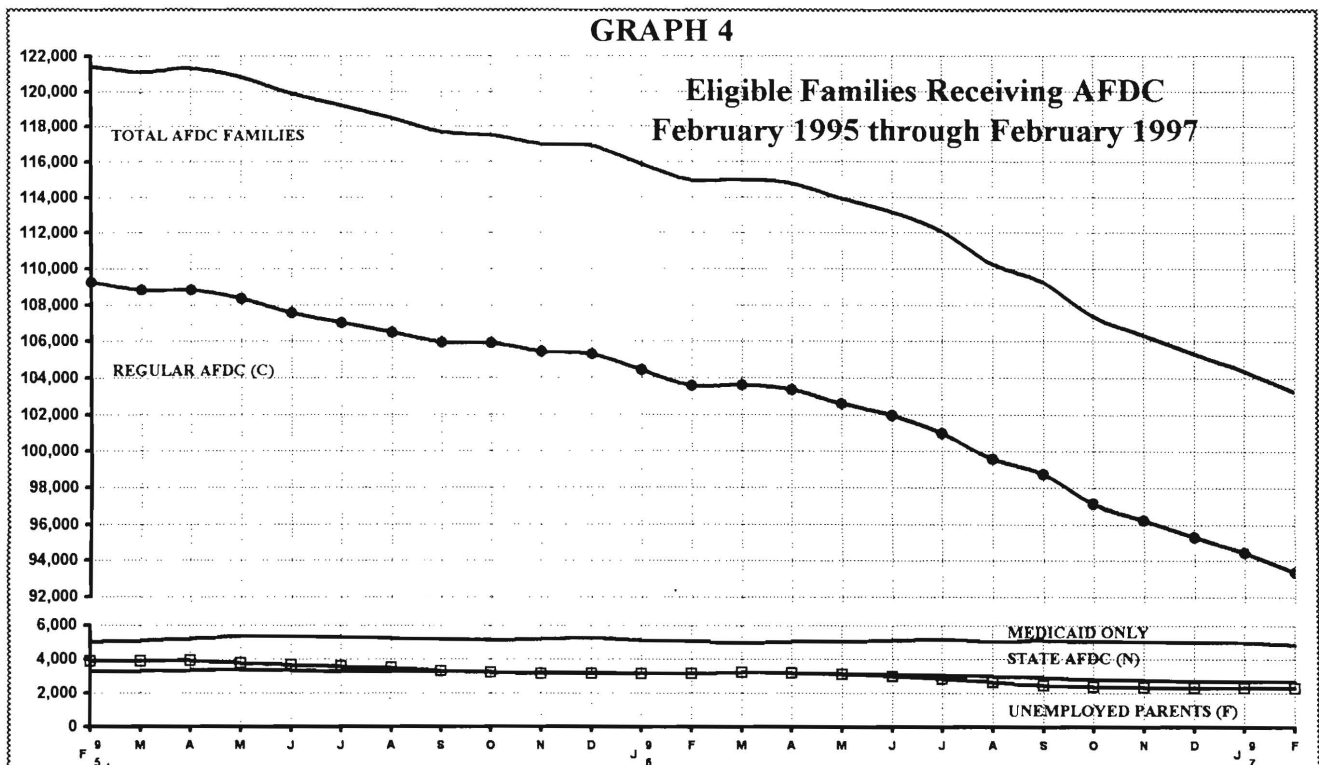
(2) - FAMIS file date: 2/21/97

New Jersey Department of Human Services  
Division of Family Development

**Table 5**  
**AFDC Program**  
**NUMBER OF APPLICATIONS AND TERMINATIONS DURING REPORT MONTH, AND**  
**NUMBER OF ELIGIBLE FAMILIES RECEIVING AFDC AT END OF REPORT MONTH**  
**February 1995 through February 1997**

	Applications Approved	Terminations	Regular AFDC (C Segment)	Unemployed Parents(F)	State AFDC(N)	Medicaid Only	Total AFDC
1995 FEB	5,964	6,515	109,261	3,878	3,270	5,016	121,425
MAR	5,810	6,221	108,800	3,903	3,305	5,088	121,096
APR	7,096	7,086	108,822	3,907	3,365	5,209	121,303
MAY	5,288	5,784	108,343	3,773	3,369	5,328	120,813
JUN	5,558	6,458	107,541	3,639	3,336	5,358	119,874
JUL	5,977	6,781	107,028	3,574	3,286	5,293	119,181
AUG	5,547	6,294	106,475	3,489	3,260	5,239	118,463
SEP	5,922	6,647	105,943	3,303	3,260	5,175	117,681
OCT	7,062	7,359	105,917	3,224	3,257	5,110	117,508
NOV	6,083	6,660	105,445	3,164	3,199	5,189	116,997
DEC	5,582	5,775	105,287	3,165	3,189	5,258	116,899
AVERAGE (12 mos.)	5,956	6,460	107,376	3,575	3,288	5,192	119,430
1996 JAN	5,332	6,236	104,430	3,139	3,173	5,113	115,855
FEB	5,217	6,283	103,561	3,161	3,170	5,060	114,952
MAR	6,317	6,302	103,598	3,230	3,217	4,956	115,001
APR	6,896	7,241	103,352	3,192	3,211	5,040	114,795
MAY	5,335	6,152	102,600	3,112	3,163	5,038	113,913
JUN	5,319	6,121	101,947	2,999	3,117	5,116	113,179
JUL	5,874	7,027	100,968	2,843	3,073	5,200	112,084
AUG	5,014	6,789	99,567	2,638	2,993	5,053	110,251
SEP	6,311	7,440	98,744	2,462	2,933	5,097	109,236
OCT	5,213	7,015	97,152	2,368	2,822	5,026	107,368
NOV	5,374	6,549	96,238	2,329	2,752	5,034	106,353
DEC	5,018	6,137	95,322	2,308	2,708	4,992	105,330
AVERAGE	5,602	6,608	100,623	2,815	3,028	5,060	111,526
1997 JAN	5,933	6,803	94,429	2,290	2,692	4,994	104,405
FEB	4,410	5,728	93,359	2,310	2,700	4,862	103,231
AVERAGE	5,172	6,266	93,894	2,300	2,696	4,928	103,818

Data is derived from NJ Division of Family Development's FAMIS report #FF-012

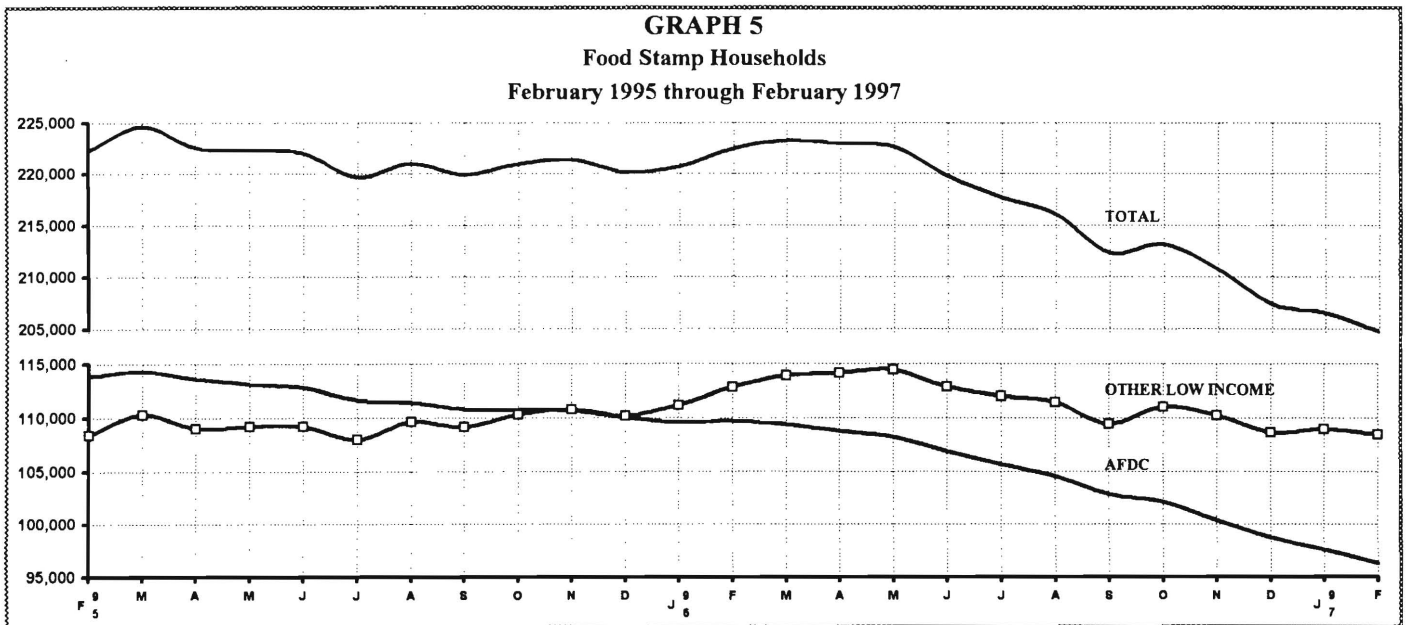


New Jersey Department of Human Services  
 Division of Family Development

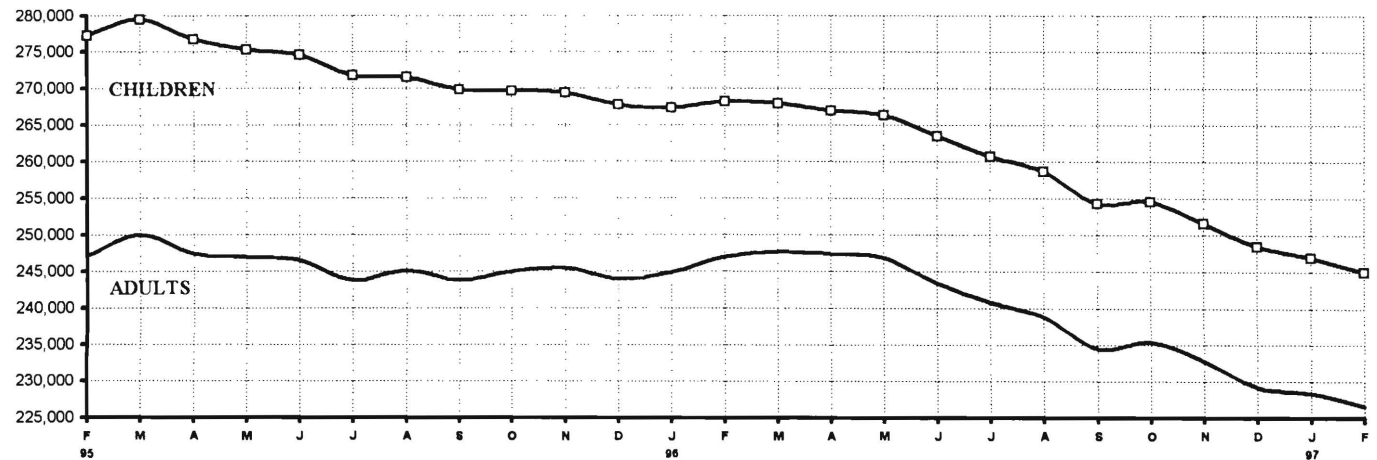
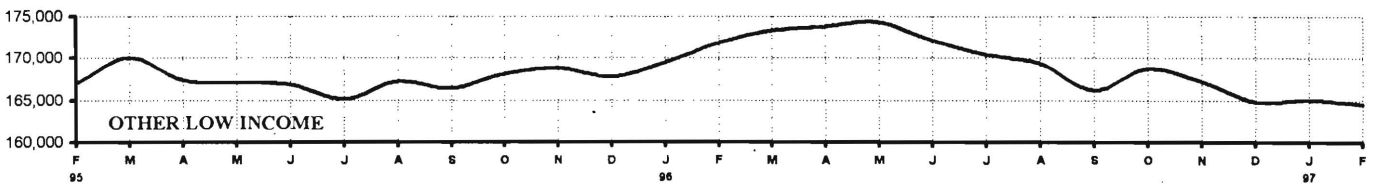
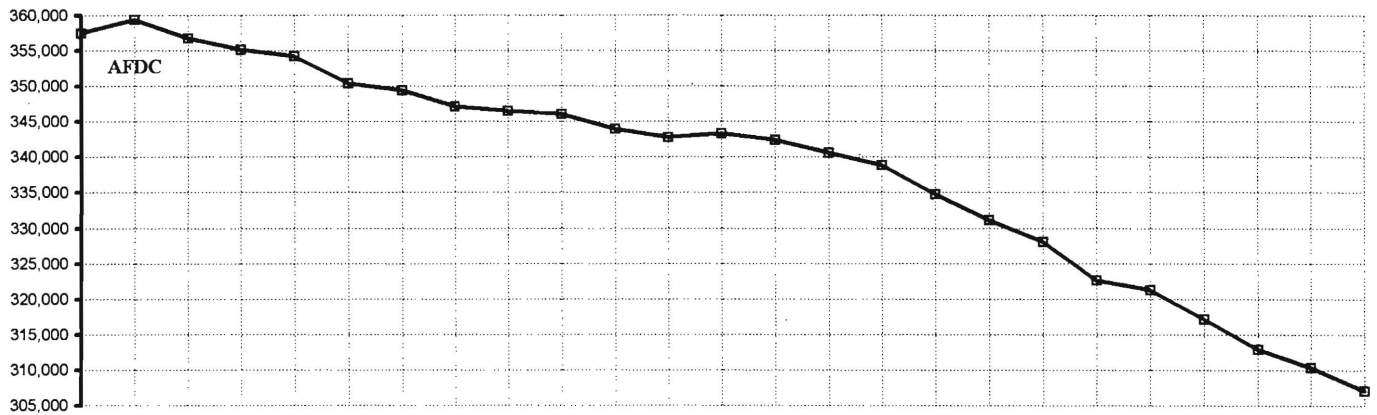
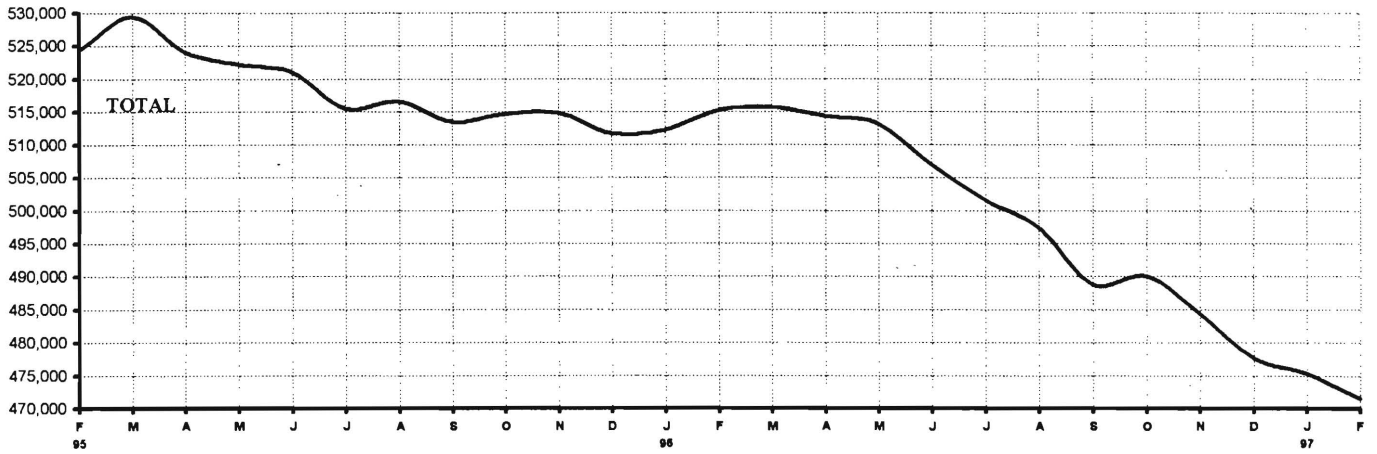
**TABLE 6**  
**FOOD STAMP Program State Summary**  
**NUMBER OF ATP'S ISSUED TO HOUSEHOLDS, PERSONS**  
**ADULTS AND CHILDREN AT THE END OF THE REPORT MONTH**  
 February 1995 through February 1997

	HOUSEHOLDS			PERSONS				
	AFDC	Other low income	TOTAL	TOTAL	AFDC	Other low income	Adults	Children
1995 FEB	113,830	108,421	222,251	524,344	357,419	166,925	247,107	277,237
MAR	114,339	110,279	224,618	529,456	359,404	170,052	249,994	279,462
APR	113,588	108,991	222,579	524,102	356,717	167,385	247,367	276,735
MAY	113,125	109,171	222,296	522,173	355,099	167,074	246,949	275,224
JUN	112,827	109,198	222,025	521,084	354,211	166,873	246,557	274,527
JUL	111,635	107,978	219,613	515,478	350,378	165,100	243,727	271,751
AUG	111,415	109,603	221,018	516,618	349,372	167,246	245,110	271,508
SEP	110,760	109,154	219,914	513,517	347,126	166,391	243,723	269,794
OCT	110,697	110,268	220,965	514,598	346,519	168,079	244,911	269,687
NOV	110,630	110,763	221,393	514,823	346,034	168,789	245,455	269,368
DEC	109,992	110,155	220,147	511,727	343,955	167,772	243,965	267,762
AVERAGE (12 mos.)	112,211	109,290	221,500	519,170	351,916	167,254	245,892	273,279
1996 JAN	109,554	111,166	220,720	512,165	342,778	169,387	244,801	267,364
FEB	109,649	112,813	222,462	515,181	343,314	171,867	246,961	268,220
MAR	109,364	113,895	223,259	515,676	342,361	173,315	247,695	267,981
APR	108,787	114,163	222,950	514,375	340,597	173,778	247,380	266,995
MAY	108,205	114,458	222,663	513,213	338,891	174,322	246,918	266,295
JUN	106,875	112,888	219,763	506,926	334,762	172,164	243,422	263,504
JUL	105,653	112,023	217,676	501,575	331,157	170,418	240,840	260,735
AUG	104,568	111,473	216,041	497,436	328,055	169,381	238,804	258,632
SEP	102,827	109,441	212,268	488,765	322,572	166,193	234,442	254,323
OCT	102,088	111,008	213,096	489,991	321,226	168,765	235,401	254,590
NOV	100,411	110,254	210,665	484,378	317,163	167,215	232,756	251,622
DEC	98,729	108,617	207,346	477,693	312,869	164,824	229,191	248,502
AVERAGE	105,559	111,850	217,409	501,448	331,312	170,136	240,718	260,730
1997 JAN	97,555	108,961	206,516	475,374	310,342	165,032	228,388	246,986
FEB	96,279	108,462	204,741	471,576	307,066	164,510	226,570	245,006
AVERAGE	96,917	108,712	205,629	473,475	308,704	164,771	227,479	245,996

ATP - Authorization to Participate  
 Data is derived from NJ Division of Family Development's FAMIS report # FB-160.



**GRAPH 6**  
**Food Stamp Recipients**  
 February 1995 through February 1997

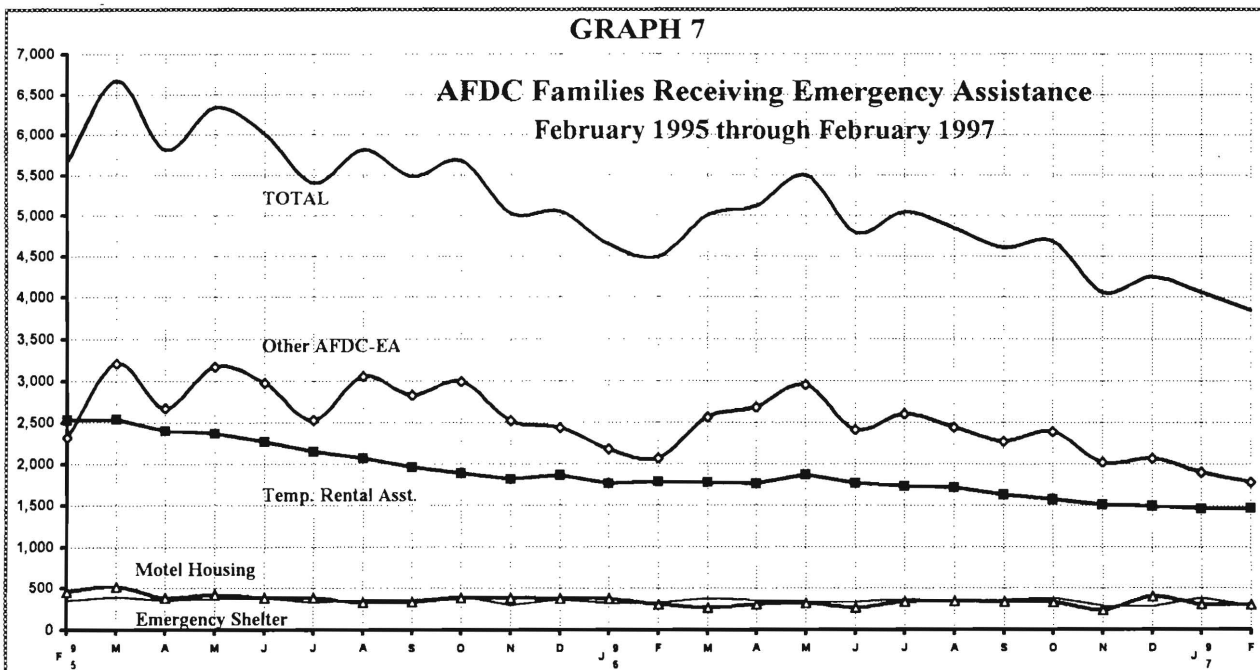


New Jersey Department of Human Services  
 Division of Family Development

**TABLE 7**  
**EMERGENCY ASSISTANCE Program for AFDC Recipients, State Summary**  
**NUMBER OF ELIGIBLE FAMILIES RECEIVING EMERGENCY ASSISTANCE PAYMENTS**  
**(UNDUPLICATED CASES)**  
**February 1995 through February 1997**

	Total families receiving EA	Temporary rental assistance	Motel Housing	Emergency Shelter	Other AFDC-EA
1995 FEB	5,664	2,535	456	354	2,319
MAR	6,668	2,542	516	402	3,208
APR	5,815	2,402	387	351	2,675
MAY	6,338	2,364	427	381	3,166
JUN	6,007	2,268	382	387	2,970
JUL	5,402	2,149	389	334	2,530
AUG	5,813	2,068	331	362	3,052
SEP	5,482	1,958	336	364	2,824
OCT	5,678	1,891	388	410	2,989
NOV	5,024	1,816	384	302	2,522
DEC	5,048	1,864	377	369	2,438
AVERAGE (12 mos.)	5,755	2,201	405	369	2,779
1996 JAN	4,639	1,761	374	325	2,179
FEB	4,490	1,788	305	330	2,067
MAR	5,001	1,779	270	388	2,564
APR	5,118	1,760	309	364	2,685
MAY	5,498	1,873	323	350	2,952
JUN	4,791	1,772	266	341	2,412
JUL	5,044	1,729	335	377	2,603
AUG	4,845	1,716	346	339	2,444
SEP	4,600	1,625	337	362	2,276
OCT	4,683	1,576	334	385	2,388
NOV	4,059	1,507	237	294	2,021
DEC	4,244	1,492	400	286	2,066
AVERAGE	4,751	1,698	320	345	2,388
1997 JAN	4,059	1,462	310	382	1,905
FEB	3,847	1,473	296	292	1,786
AVERAGE	3,953	1,468	303	337	1,846

Data derived from NJ Division of Family Development FAMIS Report #FM457 and #FM430-03a.

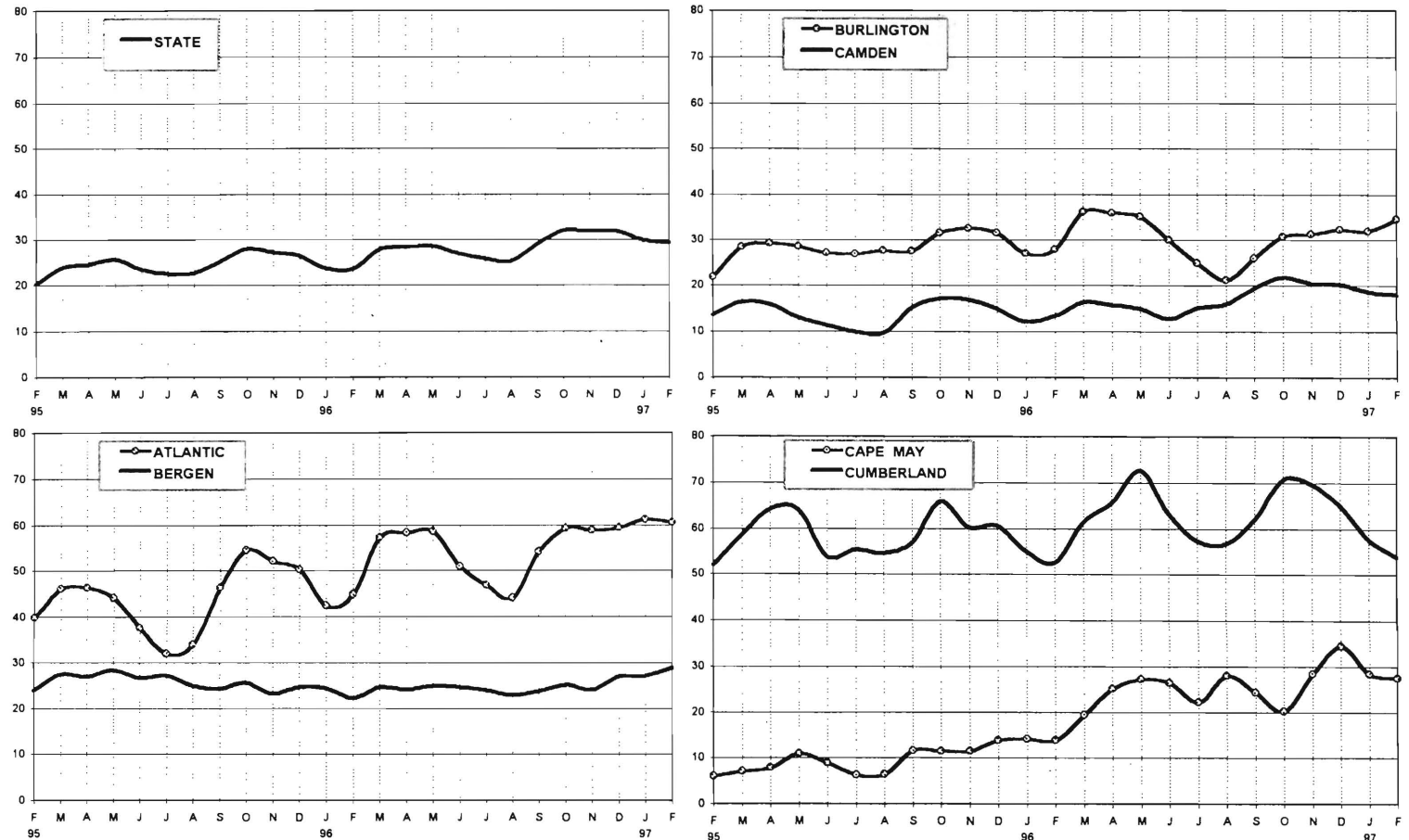


New Jersey Department of Human Services  
Division of Family Development

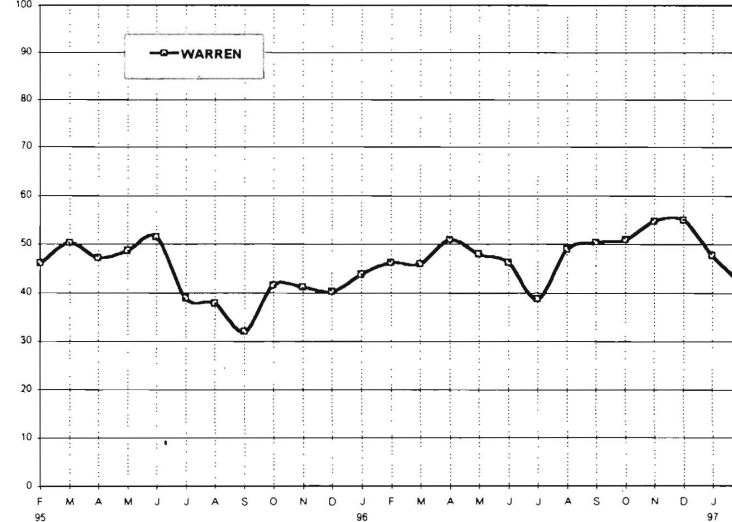
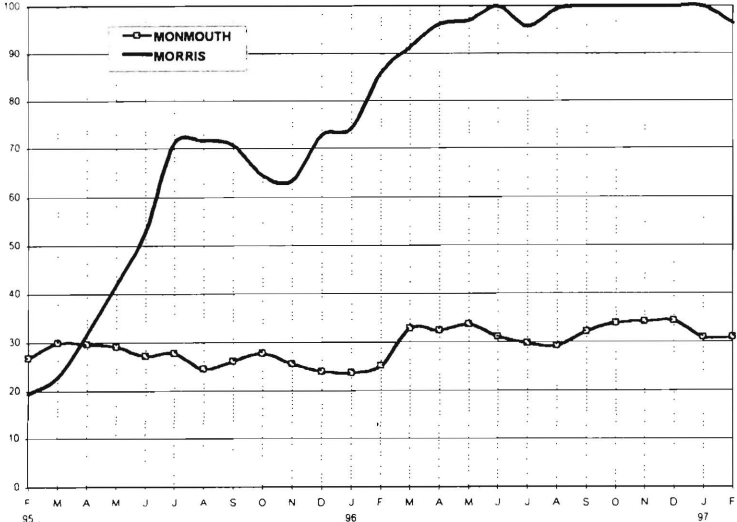
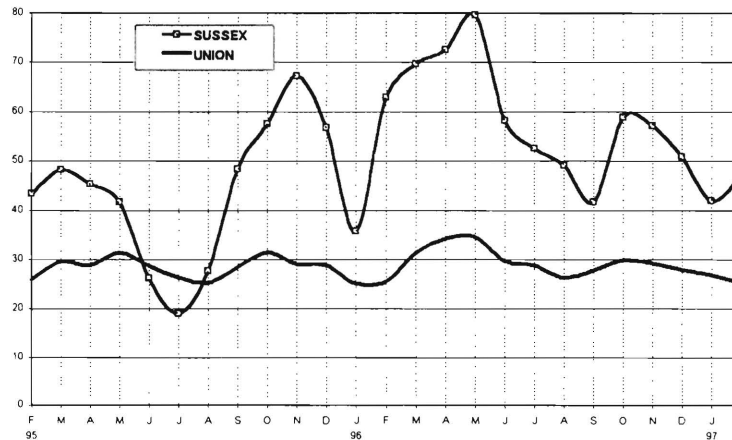
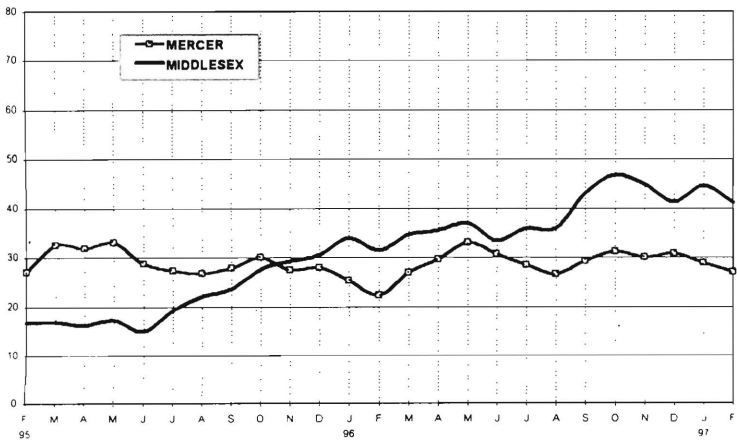
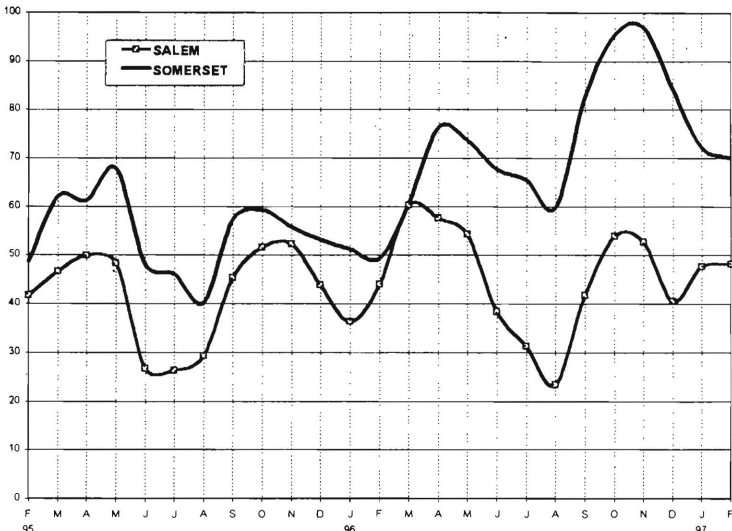
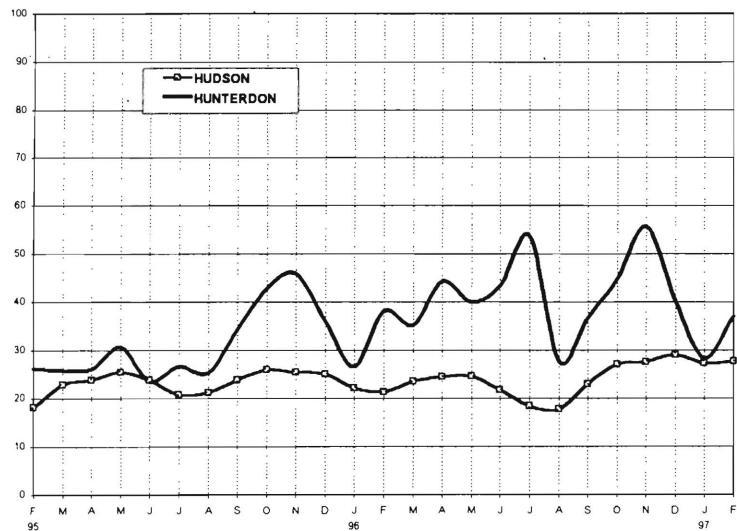
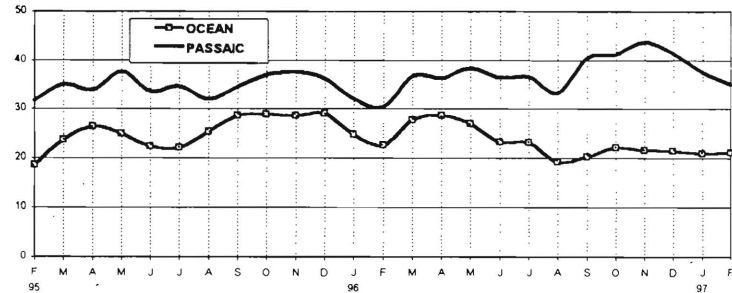
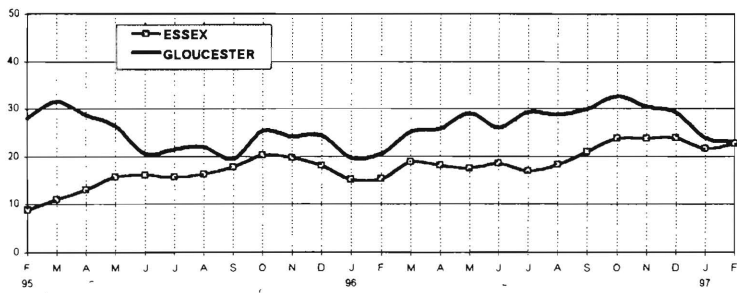
**TABLE 8**  
**JOBS/FDP PARTICIPATION RATES BY MONTH**  
(PERCENT)

	STATE	ATLANTIC	BERGEN	BURLINGTON	CAMDEN	CAPE MAY	CUMBERLAND	ESSEX	GLOUCESTER	HUDSON	HUNTERDON	MERCER	MIDDLESEX	MONMOUTH	MORRIS	OCEAN	PASSAIC	SALEM	SOMERSET	SUSSEX	UNION	WARREN
FEB	20.3	39.8	23.9	21.8	13.6	6.0	52.1	8.8	28.1	18.1	26.2	27.0	16.8	26.8	19.5	18.6	31.7	41.7	48.7	43.3	26.0	46.1
MAR	23.8	46.1	27.3	28.5	16.3	7.2	58.6	11.0	31.6	22.9	25.8	32.5	16.9	29.9	22.9	23.6	35.1	46.6	62.0	48.2	29.6	50.3
APR	24.5	46.3	26.9	29.2	15.7	7.9	64.1	13.0	28.7	23.8	26.1	31.9	16.3	29.6	31.9	26.4	33.9	50.0	61.3	45.3	28.9	47.2
MAY	25.7	44.0	28.3	28.6	12.9	10.9	64.0	15.7	26.4	25.4	30.6	33.1	17.4	29.1	42.0	25.0	37.7	48.4	68.0	41.7	31.4	48.7
JUN	23.3	37.7	26.5	27.1	11.3	9.0	53.8	16.0	20.7	23.8	23.5	28.7	15.1	27.2	52.9	22.3	33.6	26.7	48.1	26.1	28.6	51.5
JUL	22.5	31.9	27.0	26.9	9.8	6.3	55.3	15.8	21.5	20.8	26.6	27.3	19.2	27.7	71.0	22.1	34.7	26.3	46.1	19.0	26.3	38.9
AUG	22.6	33.9	24.8	27.7	9.5	6.5	54.6	16.2	22.0	21.2	25.2	26.7	22.0	24.5	71.7	25.4	32.0	29.4	40.3	27.7	25.2	37.8
SEP	25.2	46.4	24.2	27.6	15.1	11.7	56.9	17.7	19.5	23.8	34.3	27.8	23.6	26.2	70.7	28.6	34.5	45.3	57.3	48.4	28.4	32.0
OCT	27.9	54.6	25.5	31.5	17.1	11.4	65.9	20.2	25.3	26.0	42.7	30.1	27.5	27.8	64.4	28.9	37.0	51.7	59.3	57.5	31.4	41.7
NOV	27.2	52.2	23.1	32.5	16.8	11.5	60.2	19.7	24.1	25.4	45.8	27.4	29.3	25.6	63.3	28.6	37.6	52.4	55.8	67.2	29.0	41.3
DEC	26.4	50.3	24.5	31.5	14.8	13.9	60.6	18.1	24.4	25.0	35.9	28.0	30.6	23.9	72.6	28.9	36.2	43.9	53.2	56.7	28.8	40.3
96 JAN	23.7	42.5	24.3	27.1	12.0	14.1	55.1	15.2	19.7	22.2	26.7	25.3	34.0	23.6	74.1	24.8	32.1	36.3	51.3	35.8	25.2	43.8
FEB	23.5	44.9	22.2	27.9	13.3	13.9	52.6	15.3	20.5	21.5	38.0	22.3	31.5	25.1	85.9	22.6	30.4	43.9	49.4	62.9	25.5	46.3
MAR	27.8	57.3	24.5	36.2	16.2	19.4	61.5	18.7	25.1	23.5	35.2	26.9	34.6	32.8	91.4	27.6	36.8	60.2	60.6	69.6	31.3	45.9
APR	28.3	58.3	24.0	35.9	15.7	25.1	65.6	18.1	25.7	24.4	44.3	29.7	35.5	32.5	96.2	28.6	36.4	57.6	76.4	72.6	34.2	50.9
MAY	28.6	58.6	24.9	35.1	14.8	27.2	72.7	17.4	29.0	24.6	40.0	33.0	36.9	33.7	97.1	26.9	38.5	54.3	73.7	79.7	34.6	48.0
JUN	26.9	50.9	24.6	30.0	12.7	26.4	63.4	18.5	26.0	21.8	43.4	30.7	33.4	31.1	100.0	23.3	36.5	38.4	67.8	58.2	29.7	46.3
JUL	25.7	46.9	23.9	25.0	15.0	22.2	57.3	16.9	29.2	18.4	53.8	28.5	36.0	29.8	95.8	23.1	36.7	31.3	65.6	52.5	28.8	38.8
AUG	25.1	44.1	22.9	21.2	15.9	27.9	56.6	18.2	28.7	17.8	27.7	26.7	36.0	29.2	99.5	19.2	33.4	23.4	59.9	49.1	26.4	48.9
SEP	29.0	54.1	23.7	26.0	19.5	24.3	62.1	20.9	30.0	23.0	36.6	29.3	43.0	32.3	100.0	20.2	40.5	41.8	82.7	41.7	27.8	50.4
OCT	31.9	59.3	25.0	30.8	21.8	20.2	70.6	23.7	32.6	27.1	44.7	31.2	46.7	34.0	100.0	22.1	41.3	53.9	95.5	58.7	29.8	51.0
NOV	31.8	58.9	24.0	31.2	20.4	28.4	69.5	23.7	30.5	27.5	55.7	30.0	44.8	34.2	100.0	21.6	43.8	52.7	97.1	57.1	29.3	54.7
DEC	31.8	59.4	26.9	32.4	20.2	34.5	65.1	23.8	29.2	29.0	40.3	30.8	41.3	34.4	100.0	21.5	41.4	40.6	84.3	50.8	27.9	55.1
97 JAN	29.9	61.2	27.0	32.0	18.6	28.3	57.7	21.6	23.9	27.2	28.4	28.9	44.5	31.0	100.0	21.0	37.5	47.7	72.4	41.9	26.9	47.8
FEB	29.4	60.6	28.9	34.6	17.9	27.4	53.9	22.6	23.1	27.7	37.0	27.0	41.2	31.0	96.4	21.2	35.0	48.2	70.0	46.7	25.2	42.1

**GRAPH 8**  
**JOBS/FDP PARTICIPATION RATES (%)**



### GRAPH 8 (CONTINUED) JOBS/FDP PARTICIPATION RATES (%)

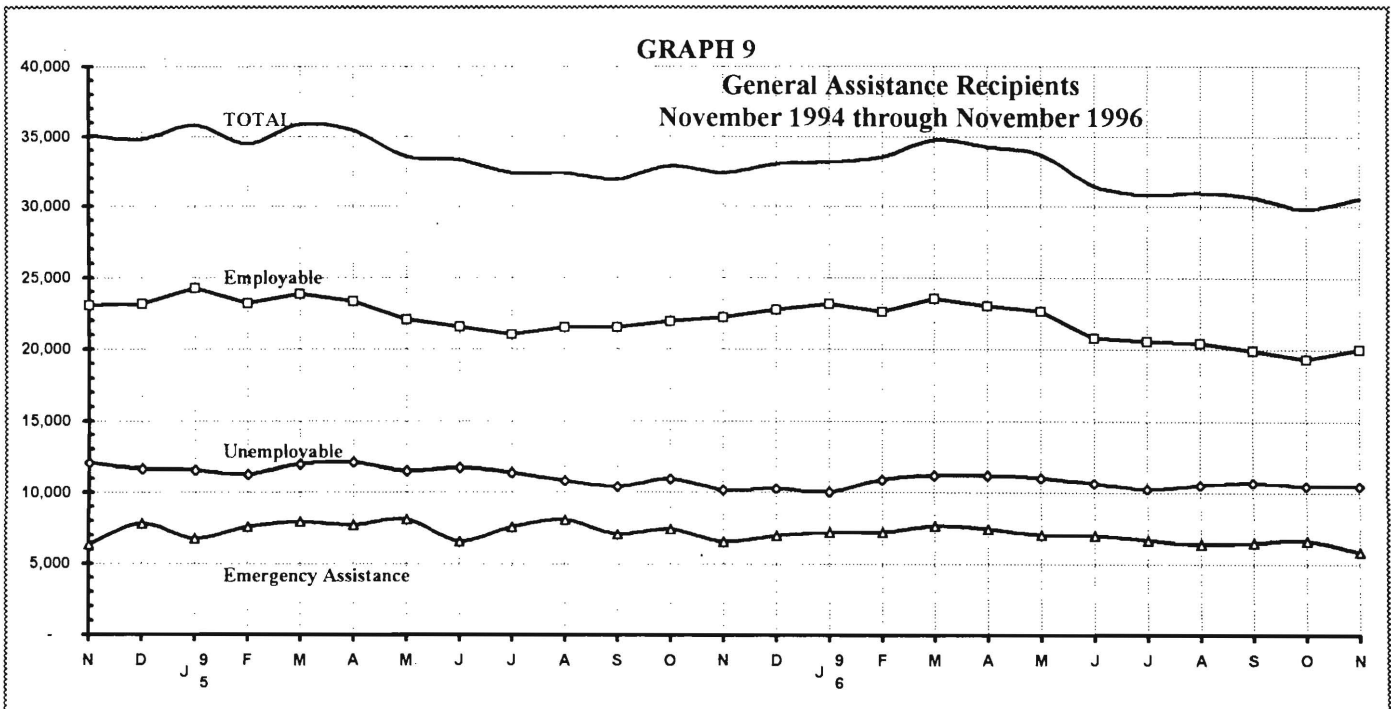


New Jersey Department of Human Services  
 Division of Family Development

**TABLE 9**  
**GENERAL ASSISTANCE Program, State Summary**  
**NUMBER OF EMPLOYABLE AND UNEMPLOYABLE RECIPIENTS**  
**AND EMERGENCY ASSISTANCE PAYMENTS DURING REPORT MONTH**  
 November 1994 through November 1996

	<u>All Persons Aided</u>			<u>Emergency Assistance Payments</u>		
	Employable	Unemployable	Total	Temporary Rental Assist	Other GA-EA	Total
1994 Nov	23,046	12,045	35,091	4,607	1,762	6,369
Dec	23,142	11,642	34,784	4,657	3,137	7,794
AVERAGE (12 mos.)	24,374	11,813	36,187	4,651	3,181	7,832
1995 JAN	24,262	11,537	35,799	4,408	2,343	6,751
FEB	23,219	11,264	34,483	4,851	2,748	7,599
MAR	23,855	11,976	35,831	5,036	2,909	7,945
APR	23,337	12,082	35,419	4,833	2,887	7,720
MAY	22,046	11,527	33,573	4,995	3,135	8,130
JUN	21,575	11,738	33,313	4,423	2,146	6,569
JUL	21,000	11,391	32,391	4,048	3,526	7,574
AUG	21,526	10,829	32,355	4,174	3,909	8,083
SEP	21,525	10,389	31,914	4,110	2,945	7,055
OCT	21,913	10,959	32,872	3,939	3,497	7,436
NOV	22,206	10,171	32,377	4,141	2,422	6,563
DEC	22,732	10,268	33,000	4,086	2,902	6,988
AVERAGE	22,433	11,178	33,611	4,420	2,947	7,368
1996 JAN	23,140	10,054	33,194	4,421	2,803	7,224
FEB	22,584	10,927	33,511	4,567	2,651	7,218
MAR	23,528	11,243	34,771	4,472	3,185	7,657
APR	23,028	11,221	34,249	4,490	2,944	7,434
MAY	22,657	11,054	33,711	4,064	2,947	7,011
JUN	20,785	10,667	31,452	4,283	2,716	6,999
JUL	20,546	10,282	30,828	3,754	2,922	6,676
AUG	20,416	10,552	30,968	3,958	2,448	6,406
SEP	19,895	10,741	30,636	3,905	2,597	6,502
OCT	19,310	10,514	29,824	3,894	2,728	6,622
NOV	20,019	10,508	30,527	3,662	2,166	5,828
AVERAGE	21,446	10,706	32,152	4,134	2,737	6,871

Data Sources: NJ Division of Family Development, GA Fiscal Unit



New Jersey Department of Human Services  
Division of Family Development

**TABLE 10**  
**CHILD SUPPORT AND PATERNITY COLLECTIONS**  
**State Summary**

COLLECTION SOURCE	Most Recent Six Months		
	7/95-12/95	7/96-12/96	% change
<b>AFDC &amp; FOSTER CARE</b>			
Federal Tax	\$1,930,941	\$1,939,997	0.5%
State Tax	1,074,699	1,552,196	44.4%
Unempl. Ins. Ben.	2,407,058	2,847,770	18.3%
Income Withholding	22,561,593	20,357,010	-9.8%
Other/Own Behalf	8,010,601	8,783,873	9.7%
From Other States	1,625,253	1,762,584	8.4%
For Other States	3,640,296	4,192,349	15.2%
<b>TOTAL COLLECTION</b>	<b>\$41,250,441</b>	<b>\$41,435,779</b>	<b>0.4%</b>
<b>TOTAL DISTRIBUTION</b>	<b>\$45,825,365</b>	<b>\$44,279,957</b>	<b>-3.4%</b>
<b>NON- AFDC</b>			
Federal Tax	\$1,255,442	\$1,182,613	-5.8%
State Tax	1,356,348	2,052,019	51.3%
Unempl. Ins. Ben.	7,799,188	9,798,210	25.6%
Income Withholding	128,399,101	132,956,810	3.5%
Other/Own Behalf	67,859,423	67,239,814	-0.9%
From Other States	9,854,534	10,854,160	10.1%
For Other States	13,900,599	15,067,775	8.4%
<b>TOTAL COLLECTION</b>	<b>\$230,424,635</b>	<b>\$239,151,401</b>	<b>3.8%</b>
<b>TOTAL DISTRIBUTION</b>	<b>\$204,557,195</b>	<b>\$233,912,980</b>	<b>14.4%</b>
<b>TOTAL</b>			
Federal Tax	\$3,186,383	\$3,122,610	-2.0%
State Tax	2,431,047	3,604,215	48.3%
Unempl. Ins. Ben.	10,206,246	12,645,980	23.9%
Income Withholding	150,960,694	153,313,820	1.6%
Other/Own Behalf	75,870,024	76,023,687	0.2%
From Other States	11,479,787	12,616,744	9.9%
For Other States	17,540,895	19,260,124	9.8%
<b>TOTAL COLLECTION</b>	<b>\$271,675,076</b>	<b>\$280,587,180</b>	<b>3.3%</b>
<b>TOTAL DISTRIBUTION</b>	<b>\$250,382,560</b>	<b>\$278,192,937</b>	<b>11.1%</b>

Distributed amount represents collections reported and recognized by the Federal Office of  
Child Support Enforcement for calculating incentives and annual report to Congress  
Source: DFD Office of Child Support and Paternity Programs

### **Explanatory Notes**

The Department of Human Services Division of Family Development provides basic income and an opportunity to achieve self-sufficiency for individuals and families served by the Division's programs. The Division provides leadership, direction and supervision to those public agencies responsible for administering those programs and plans for and develops policies to promote self-sufficiency.

**AID TO FAMILIES WITH DEPENDENT CHILDREN (AFDC)** - Financial assistance for dependent children and their natural or adoptive parents, or certain other relatives recognized as taking the place of a parent.

**Regular AFDC (C Segment)** - assistance when only one parent is in the home due to death or absence, or both parents are in the home but at least one is incapacitated.

**Unemployed Parents (F Segment)** - assistance when both parents are in the home, neither is incapacitated and the primary wage earner meets the federally defined criteria for unemployment.

**State AFDC (N Segment)** - assistance when both parents are in the home, neither is incapacitated, and the primary wage earner does not meet the federal definition of unemployment.

**Medicaid Only** - families no longer receiving AFDC financial assistance but remaining eligible for Medicaid under applicable provisions which extend coverage beyond period of AFDC assistance.

**FOOD STAMP PROGRAM (FS)** - Authorized by Congress as a nutritional supplement program to provide low income households with more food of greater variety and better nutrition. Program eligibility is based on household income, resources, and expenses for medical, shelter, and dependent care. CWA staff refer certain recipients to the New Jersey Department of Labor for participation in the Food Stamp Employment and Training Program.

**EMERGENCY ASSISTANCE (EA)** - Payments to those eligible for AFDC, Supplemental Security Income or General Assistance, authorized during the 30 consecutive days immediately following the emergency (defined as a substantial loss of shelter, food, clothing, or household furnishings by fire, flood or other similar disaster) or if the eligible individual or family is in an imminent or actual state of homelessness.

**JOBS/FDP**

**JOB OPPORTUNITY AND BASIC SKILLS PROGRAM (JOBS)** - Federally mandated work/training program for recipients of AFDC established by the Family Support Act of 1988 under Part F of Title IV of the Social Security Act.

**FAMILY DEVELOPMENT PROGRAM (FDP)** - Reform legislation enacted by the State Legislature in January 1992 to: build, strengthen, and support the family unit; encourage family formation; reduce the long-term aspects of welfare dependency; look to the needs of the family unit as a whole; emphasize education and training for all family members; maximize use of educational, training and employment resources; and develop genuine private sector job opportunities.

**SNAPSHOT OF ACTIVITY AT POINT IN TIME** - Status of activities as of the end of the month:

**Total Non-Exempt JOBS/FDP Recipients** - Calculation of the number of mandatory IV-F individuals (FAMIS report # FB304).

**Employment Directed Activities (EDA)** - From Activities Summary Report (OMEGA report # RM064). Unduplicated count of persons participating in **Training, Education, or Job Search**.

**Participants in EDA, Receiving Support Services** - From Issuance Disbursement Summary (OMEGA report # RM703). Total number of active participants who show receipt of **Training Related Expenses or Child Care**.

**Participation Rate (JOBS/FDP)** - Federally mandated calculation method, dividing the number of participants whose combined and averaged weekly hours of participation in qualifying activities equals or exceeds 20 hours per week by the total number of non-exempt IV-F recipients. As of the end of the month.

**ACTIVITY FOR THE MONTH** - Number of participants with the indicated activity during the month:

**Participants with First Case Management Interview** - From Activities Summary Report (OMEGA report # RM064).

**Number of Persons Employed This Month, Still Receiving AFDC** - From Activities Summary Report (OMEGA report # RM064).

**Number of Persons Closed on FAMIS Due to Earnings** - From FAMIS report # FM463.

**Post AFDC and Receiving Child Care** - Persons no longer in receipt of AFDC, but still receiving child care. From Issuance Disbursement Summary (OMEGA report # RM703).

New Jersey Department of Human Services  
Division of Family Development

**TABLE 11**  
**GENERAL ASSISTANCE Program**  
**EMPLOYABLE AND UNEMPLOYABLE RECIPIENTS AND EMERGENCY ASSISTANCE RECIPIENTS**  
**COUNTIES AND 21 LARGEST MUNICIPALITIES**  
**November 1996**

County/ Municipality	Total Persons Aided			Emergency Assistance Payments		
	Employable	Unemployable	Total	Temporary Rental Assist.	Other GA-EA	Total
ATLANTIC	937	551	1,488	59	31	90
BERGEN	440	427	867	210	53	263
BURLINGTON	342	371	713	133	85	218
CAMDEN	1,814	929	2,743	111	63	174
CAPE MAY	126	97	223	16	11	27
CUMBERLAND	272	155	427	7	9	16
ESSEX	7,482	2,339	9,821	740	1,095	1,835
GLOUCESTER	139	156	295	19	8	27
HUDSON	905	1,184	2,089	160	28	188
HUNTERDON	38	50	88	12	12	24
MERCER	1,722	742	2,464	306	187	493
MIDDLESEX	411	531	942	73	47	120
MONMOUTH	593	605	1,198	260	76	336
MORRIS	107	186	293	35	27	62
OCEAN	559	393	952	302	122	424
PASSAIC	2,187	723	2,910	466	140	606
SALEM	128	48	176	11	23	34
SOMERSET	89	104	193	31	15	46
SUSSEX	38	47	85	19	9	28
UNION	1,650	805	2,455	665	122	787
WARREN	40	65	105	27	3	30
<b>TOTAL NJ</b>	<b>20,019</b>	<b>10,508</b>	<b>30,527</b>	<b>3,662</b>	<b>2,166</b>	<b>5,828</b>
Atlantic City	785	299	1,084	46	26	72
Mount Holly	117	74	191	43	57	100
Camden	1,577	600	2,177	35	11	46
Vineland	134	80	214	4	6	10
East Orange	448	359	807	210	30	240
Irvington	294	122	416	42	11	53
Montclair	106	75	181	27	10	37
Newark	6,165	1,541	7,706	390	1,040	1,430
Orange	357	85	442	43	2	45
Bayonne	101	54	155	10	0	10
Hoboken	125	98	223	16	0	16
Jersey City	522	526	1,048	80	9	89
Trenton	1,628	638	2,266	271	178	449
Perth Amboy	102	117	219	10	14	24
Asbury Park	155	102	257	82	0	82
Long Branch	154	109	263	53	31	84
Lakewood	274	117	391	148	19	167
Passaic	525	308	833	213	6	219
Paterson	1,581	294	1,875	206	115	321
Elizabeth	1,070	416	1,486	513	81	594
Plainfield	238	133	371	33	0	33
<b>Total</b>	<b>16,458</b>	<b>6,147</b>	<b>22,605</b>	<b>2,475</b>	<b>1,646</b>	<b>4,121</b>

Source: NJ Division of Family Development, GA Fiscal Unit