

I-80 Eastbound Sinkhole

Last Update: June 03, 2025

!
ALL LANES OPENED IN BOTH DIRECTIONS
On Saturday, June 21

OVERVIEW

The New Jersey Department of Transportation closed and detoured I-80 eastbound at Exit 34 in Wharton, Morris County on Monday, February 10 after a depression in the center lane was observed.

While NJDOT crews were conducting soil tests that night, the roadway collapsed. Crews excavated and stabilized the 11-foot by 11-foot sinkhole that was approximately four-feet deep. The compromised roadway is 75 feet away from a 40-foot by 40-foot sinkhole that was repaired in the right shoulder of I-80 eastbound near mile post 34 in late December 2024.



February Sinkhole

When the sinkhole developed in February, the Department immediately began a series of geotechnical tests on I-80 eastbound and westbound to gain an understanding of subsurface conditions.



Subsurface scanning

A drilling and grouting operation was undertaken to stabilize I-80 eastbound and to determine the area in which more extensive repairs are needed.

On March 19, an approximately 15-foot by 15-foot sinkhole opened up in the median in the I-80 eastbound work zone. Out of an abundance of caution, NJDOT immediately closed and detoured all lanes on I-80 westbound at Exit 34B/Route 15 northbound. Crews worked overnight to stabilize the area around the median sinkhole and tested I-80 westbound to assess the roadway's integrity and determine what is necessary to reopen I-80 westbound.

A significant void was found under the left lane, requiring all westbound lanes to remain closed and detoured at Exit 34B until it is repaired. Final design of the I-80 westbound repairs is nearing completion, with westbound repairs beginning thereafter.

If everything progresses as planned, the repair of two lanes on **I-80 eastbound** will be completed and reopened in mid-May, with the remaining lanes expected to reopen soon after

If everything progresses as planned, two lanes on **I-80 westbound** will be completed and reopened by the end of May, with the remaining lanes expected to reopen soon after.

There will be two separate crews working concurrently – one on the eastbound side and one on the westbound side – to expedite repairs. Crews will continue working 24 hours a day until repairs are completed and the highway reopened.





Drilling and Grouting

>>



MILESTONES

Milestone	Status
Establish emergency detour route	Complete
Establish two-way traffic for residents	Complete
Revise Signal Timing to Improve Traffic Flow	Complete
Conduct Geotechnical Tests	Complete
Proactive Drilling and Grouting	Complete
I-80 westbound testing	Complete
Quality Assurance Testing	Complete
Monitoring System Installation	Complete
I-80 eastbound paving	Complete
I-80 eastbound 2 lanes Reopen	Opened May 21
I-80 westbound paving	Complete
I-80 westbound 2 lanes Reopen	Opened May 30
I-80 westbound left lane and median paving	Complete
I-80 westbound all lanes reopened	Opened June 14
I-80 eastbound left lane and median paving	Complete
I-80 eastbound all lanes reopened	Opened June 21

PROJECT SCHEDULE

I-80 Westbound

- Two lanes on I-80 westbound reopened at approximately 10 p.m. Friday, May 30 and the I-80 westbound detour utilizing Exit 34B was removed.
- All lanes on I-80 westbound reopened Saturday, June 14, 11 days ahead of schedule.

I-80 Eastbound

- Two lanes on I-80 eastbound reopened at approximately 10 p.m. Wednesday May 21 and the I-80 eastbound detour utilizing Exit 34 was removed.
- All lanes on I-80 westbound reopened Saturday, June 21, 4 days ahead of schedule

WORK AREA	Week Ending 4/6/2025	Week Ending 4/13/2025	Week Ending 4/20/2025	Week Ending 4/27/2025	Week Ending 5/4/2025	Week Ending 5/11/2025	Week Ending 5/18/2025	Week Ending 5/25/2025	Week Ending 6/1/2025	Week Ending 6/8/2025	Week Ending 6/15/2025	Week Ending 6/22/2025	Week Ending 6/29/2025
Open 2 Lanes Eastbound - Construct Slabs E1, E2 & E3 and Establish Traffic Pattern									★				
Open 2 Lanes Westbound Construct Slabs W1 and W2 and Establish Traffic Pattern										★			
Restore Rt 80 to Original Condition all lanes open - Construction Slabs M1, M2 and M3													★

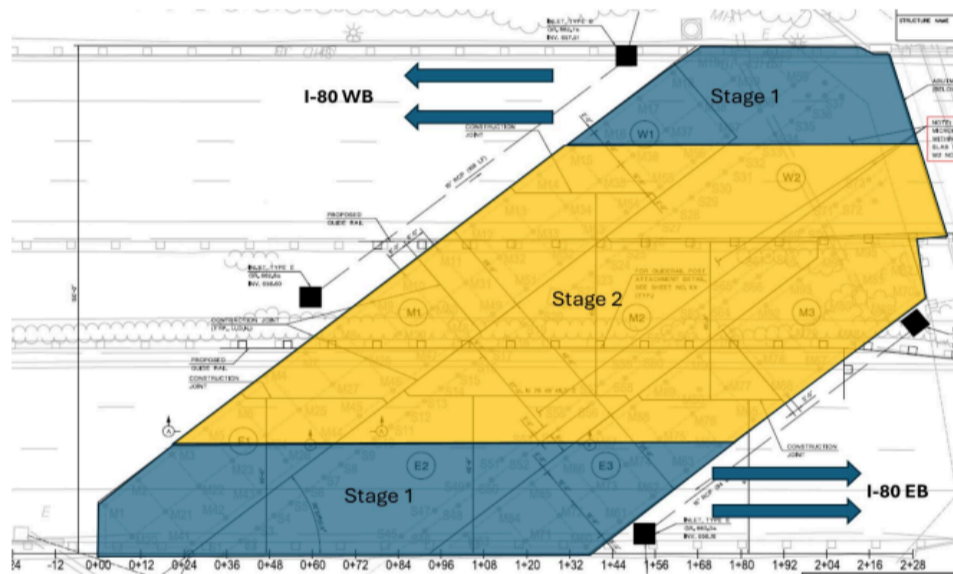
- ★ MILESTONE 1 - Approximately May 21, 2025
- ★ MILESTONE 2 - Approximately May 31, 2025
- ★ MILESTONE 3 - Approximately June 25, 2025

Operations are weather contingent and conditions could impact durations

The team remains committed to seizing every opportunity to improve the schedule by swiftly adapting to changes and challenges and finding creative logistical solutions.

Current slab design is fluid.

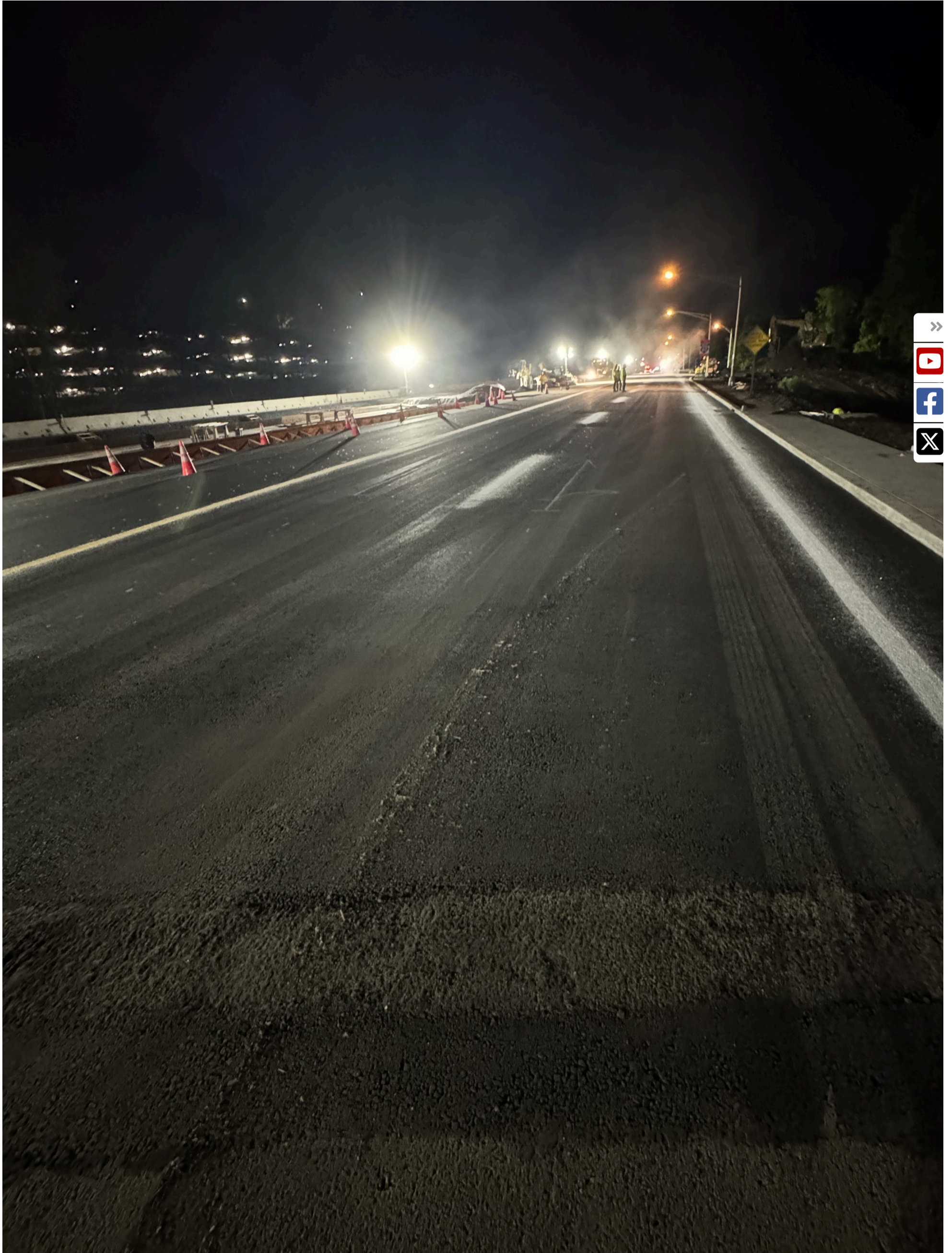
Construction timeline is based on current ground conditions and is subject to change

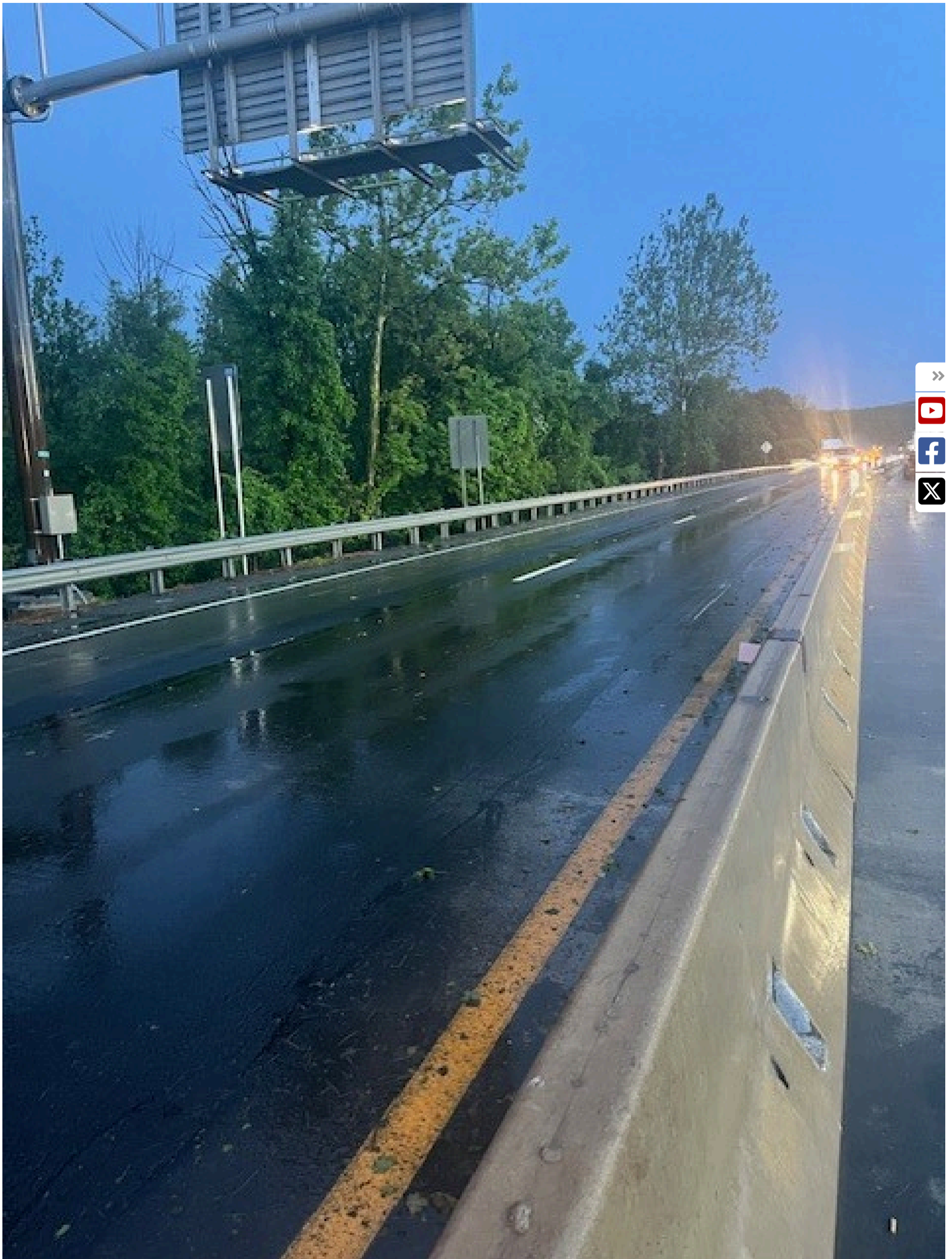


[Click here to open Project Schedule pdf](#)









EMERGENCY REPAIR PHASES

The path to completing emergency repairs and reopening I-80 eastbound has several phases. The timing for each phase has not yet been determined. However, the entire repair is expected to take approximately two months:

- **Geotechnical tests** to assess the condition of the roadway base **are complete**. These tests established our work area and helped identify approximately 150 locations to drill and grout.

- **Drilling and grouting operations** to probe subsurface conditions are complete. This work has stabilized the area under the roadway by filling holes and small voids and outlined the area where a more extensive repair is required.
- **Repairing I-80 eastbound and westbound is ongoing.** The repair will include excavating the area, installing a base of large stone and micropiles into the bedrock to support a concrete slab. Additional fill and soil will be placed on top of the concrete and compacted before several layers of asphalt will be applied to reconstruct the road.
- **Quality assurance testing** will be done while repairs are being made and following completion of the repair to ensure the long-term stability of the roadway and the integrity of the repairs.
- **Installing a monitoring system** to track surface and underground conditions will be done as part of the repair. There will be three types of monitors. Remote sensing technology on poles will scan the pavement for changes, while sensors beneath the road will detect early signs of subsurface movement. Deeper underground devices will monitor long-term soil stability.
- **Milling and paving** the work area for a safe, smooth driving surface and reopening the road is the final phase.



Median Excavation

EMERGENCY FUNDING

Governor Phil Murphy declared a State of Emergency for Morris County on March 8 to enable access to Federal funding. The Declaration was one step in the process to apply for emergency federal funding from the Federal Highway Administration (FHWA). NJDOT is continuing to work with FHWA. Governor Murphy lifted the State of Emergency for Morris County on June 21.



Location Map



NJDOT

About NJDOT

[ABOUT - HOME](#)
[CONTACT Us \(NJDOT\)](#)
[ASSET MANAGEMENT](#)
[COMMISSIONER OF TRANSPORTATION](#)
[COMMITMENT TO COMMUNITIES](#)
[DIRECTIONS](#)
[DIRECTORY](#)
[EMPLOYMENT OPPORTUNITIES](#)
[EXECUTIVE STAFF](#)
[HIGHWAY SAFETY](#)
[INSPECTOR GENERAL](#)
[MISSION STATEMENT](#)
[ORGANIZATION CHART](#)
[NEWS RELEASES](#)
[NJDOT 50TH ANNIVERSARY](#)
[PUBLICATIONS](#)
[STATUTORY AUTHORITY/RULES & REGULATIONS](#)
[VIDEOS, YouTube](#)
[WINTER READINESS](#)
[STORMWATER MANAGEMENT TRAINING VIDEOS](#)

Capital Program

[CAPITAL PROGRAM - HOME](#)
[ANNUAL OBLIGATION REPORTS](#)
[ANNUAL TRANSPORTATION CAPITAL PROGRAM \(PUBLIC LAW 2013, CHAPTER 252\)](#)
[ALTERNATIVE PROJECT DELIVERY](#)
[CAPITAL PROGRAM DOCUMENTS](#)
[CAPITAL PROJECT DELIVERY](#)
[ELECTRONIC STATEWIDE TRANSPORTATION IMPROVEMENT PROGRAM 2024 - 2033](#)
[FIXED GUIDEWAY](#)
[STATEWIDE TRANSPORTATION IMPROVEMENT PROGRAM 2024 -2033](#)
[TRANSPORTATION CAPITAL PROGRAM 2025](#)
[DRAFT TRANSPORTATION CAPITAL PROGRAM 2026](#)
[TRANSPORTATION TRUST FUND AUTHORITY](#)
[STATEWIDE CAPITAL INVESTMENT STRATEGY \(SCIS\)](#)
[STIP ARCHIVES](#)

Community Programs

[COMMUNITY PROGRAMS - HOME](#)
[CLEAN UP NJ!](#)
[CONTEXT SENSITIVE DESIGN](#)
[LOCAL AID AND ECONOMIC DEVELOPMENT/GRANTS](#)
[PUBLIC MEETINGS](#)
[SAFE ROUTES TO SCHOOL/GRANTS](#)
[SCENIC BYWAYS](#)
[TRANSIT VILLAGE INITIATIVE](#)

Doing Business

[DOING BUSINESS - HOME](#)
[AASHTOWARE PROJECT SOFTWARE](#)
[AMERICANS WITH DISABILITIES / SECTION 504](#)
[AUDIT](#)
[AWARDED PROJECTS](#)
[BEFORE YOU DIG](#)
[BROADBAND](#)
[BUREAU OF RESEARCH, INNOVATION & INFORMATION TRANSFER](#)
[CAPITAL PROJECT DELIVERY](#)
[CIVIL RIGHTS AFFIRMATIVE ACTION](#)
[DESIGN SERVICES](#)
[DIRECTORY](#)
[INSPECTOR GENERAL](#)
[INTELLIGENT TRANSPORTATION SYSTEMS](#)
[LOCAL AID & ECONOMIC DEVELOPMENT / GRANTS](#)
[MOBILITY AND SYSTEMS ENGINEERING](#)
[NONPROFIT INFORMATION](#)
[OUTDOOR ADVERTISING](#)

[MAJOR ACCESS E-PERMITTING](#)
[PERMITS INFORMATION](#)
[HIGHWAY ACCESS PERMITS](#)
 [HIGHWAY OCCUPANCY PERMITS](#)
 [TV & FILM PRODUCTION HOP](#)
[WIRELESS PERMITS](#)
[PLANNED ADVERTISEMENTS\(SIX-MONTHS\)](#)
[PROCUREMENT](#)
[RIGHT OF WAY](#)
[FOOD, GAS, LODGING AND TOURISM SIGNS](#)
[TRAFFIC CAMERA VIDEO LOG REQUEST](#)
[VENDOR HELP](#)

Engineering

[ENGINEERING - HOME](#)
[ANNOUNCEMENTS](#)
[CONSTRUCTION AND MATERIALS](#)
[DESIGN](#)
[DRAWINGS](#)
[ELECTRICAL](#)
[FORMS](#)
[MARKOUT REQUESTS](#)
[MANUALS](#)
[OPERATIONS](#)
[PERMITS AND LICENSES](#)
[POLICY](#)
[PROCEDURES](#)
[PROJECTS](#)
[SPECIFICATIONS](#)
[SUPERSEDED](#)
[VENDOR/CONTRACTOR ASSISTANCE](#)

In the Works

[IN THE WORKS - HOME](#)
[FREIGHT PLANNING](#)
[LIBERTY CORRIDOR](#)
[LONG RANGE TRANSPORTATION PLAN](#)
[MARITIME PILOT & DOCKING COMMISSION](#)
[MARITIME RESOURCES](#)
[NEW JERSEY CARBON REDUCTION STRATEGY](#)
[OUR PROJECTS & THE ENVIRONMENT](#)

Multimodal/Freight

[FREIGHT, AIR AND WATER - HOME](#)
[AVIATION](#)
[FREIGHT PLANNING](#)
[LIBERTY CORRIDOR](#)
[MARITIME PILOT & DOCKING COMMISSION](#)
[MARITIME RESOURCES](#)
[MULTIMODAL GRANTS AND PROGRAMS](#)
[RAIL](#)
[TRUCKING](#)

NJCommuter

[TRAVELER INFO - HOME](#)
[511 NJ TRAVEL INFO](#)
[AVIATION](#)
[BIKING IN NEW JERSEY](#)
[BUS & TRAIN SCHEDULES](#)
[CAMERAS](#)
[COMPLETE STREETS](#)
[CONSTRUCTION UPDATES](#)
[DRAWBRIDGE SCHEDULES](#)
[MOTORIST ASSISTANCE](#)
[PEDESTRIAN SAFETY](#)
[POTHOLE / MAINTENANCE REPORTING](#)



RIDESHARING
WORKZONE SAFETY

MONITORING SYSTEM PROGRAM
ROADWAY VIDEOLOG
SOIL BORINGS
STATUTORY AUTHORITY/RULES & REGULATIONS
STRAIGHT LINE DIAGRAM
TRAFFIC CAMERA VIDEO LOG REQUEST
TRAFFIC REGULATIONS
HELPFUL LINKS
 COMMUNITY LINKS
 COMMUTER LINKS
 ENGINEERING LINKS
 PLANNING LINKS
 REFERENCE LINKS
HR NEOGOV
SITE MAP

References

REFERENCE - HOME
CRASH RECORDS
CADD SUPPORT
COUNTY ROAD SIDEWALK INVENTORY
GEOGRAPHIC INFORMATION SYSTEMS
INFORMATION TECHNOLOGY
LONG RANGE TRANSPORTATION PLAN
OPEN PUBLIC RECORDS ACT
RESEARCH LIBRARY
ROADWAY INFORMATION & TRAFFIC

Statewide

GOVERNOR PHIL MURPHY
LT. GOVERNOR TAHESHA WAY
NJ HOME
SERVICES A TO Z
DEPARTMENTS/AGENCIES
FAQs
CONTACT US
PRIVACY NOTICE
LEGAL STATEMENT & DISCLAIMERS
ACCESSIBILITY STATEMENT



*Copyright © State of New Jersey, 1996-2024
Department of Transportation
P.O. Box 600
Trenton, NJ 08625-0600
Office of Community Relations
609-963-1982*

Last updated date: June 3, 2025 10:36 AM