

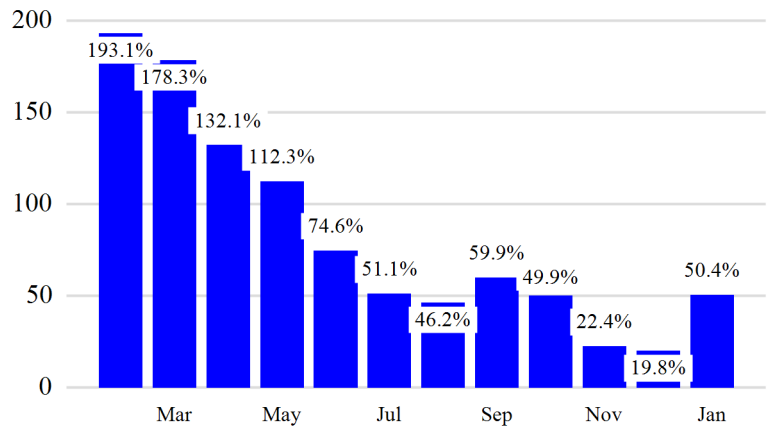
Revenue Passengers

	Curr Month	% Change
	10,266,250	50.4% ▲
Domestic	6,971,091	44.5%
International	3,295,159	64.6%
Non-Revenue	313,705	40.3%

Load Factors	Curr Month
Domestic	71.9%
International	75.9%

73.2% Avg Load Factor

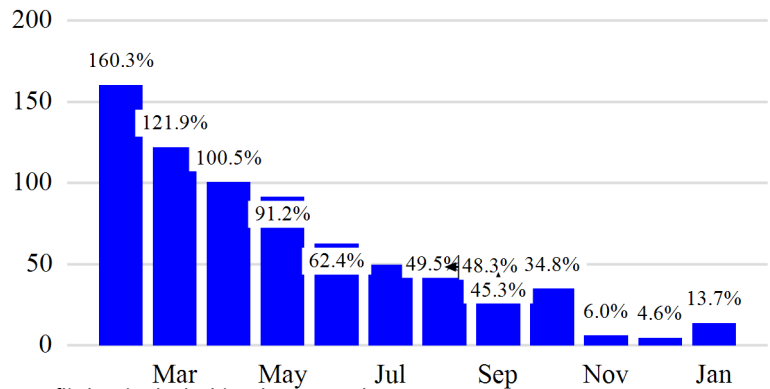
Year over Year % Change in Revenue Passengers - 12 Months



Total Flights

	Curr Month	% Change
	104,053	14.6% ▲
Excl GA	99,718	13.7% ▲
Domestic	77,251	9.6%
International	22,467	30.3%
Gen Aviation	4,335	39.0%
Cargo Flights*	3,030	-9.2%

Year over Year % Change in Total Flights (Excl GA) - 12 Months

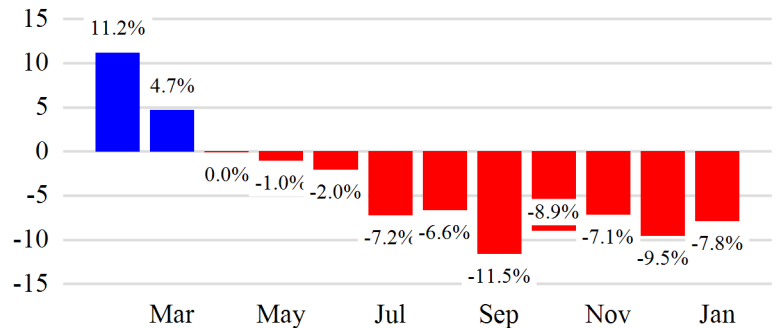


* Cargo flights included in above totals

Cargo (Short Tons)

	Curr Month	% Change
	164,505	-7.8% ▼
Domestic	67,417	-13.2%
International	97,088	-3.7%
Mail	10,123	-16.9%

Year over Year % Change in Cargo - 12 Months



Top 5 Declines in Revenue Passengers by Airline

Airline	Pax Decline	% Decline
FRONTIER AIRLINES	(29,636)	-43.0%
Avianca El Salvador	(2,367)	-12.0%
QATAR AIRWAYS	(1,372)	-4.0%
COPA AIRLINES	(1,066)	-4.0%
Avianca Costa Rica	(823)	-17.0%

Top 5 Increases in Revenue Passengers by Airline

Airline	Pax Increase	% Increase
UNITED	868,319	49.0%
DELTA	772,670	51.0%
JETBLUE AIRWAYS	539,227	45.0%
AMERICAN	309,909	34.0%
SPIRIT AIRLINES	93,388	35.0%

Airport Summary Statistics

JFK Summary

	Current Month	YoY %
Total Revenue Pax	4,457,112	52.0
Total Flights Including GA	37,776	15.0
Total Cargo (Short Tons)	109,443	-6.6

EWR Summary

	Current Month	YoY %
Total Revenue Pax	3,607,069	45.0
Total Flights Including GA	34,604	17.0
Total Cargo (Short Tons)	52,912	-10.5

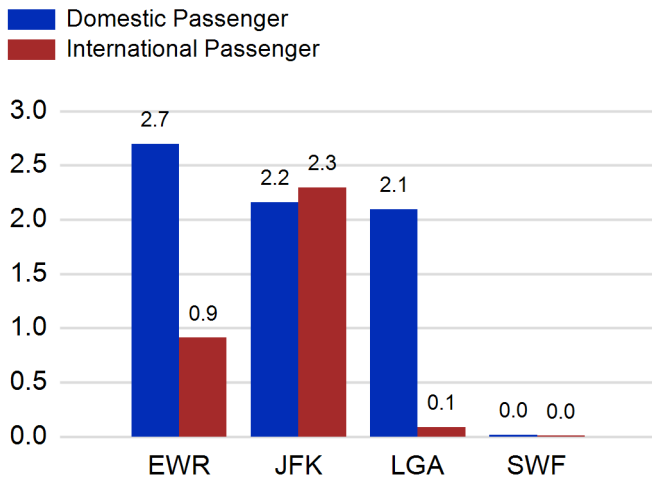
LGA Summary

	Current Month	YoY %
Total Revenue Pax	2,183,854	54.0
Total Flights Including GA	29,669	10.0
Total Cargo (Short Tons)	470	-6.1

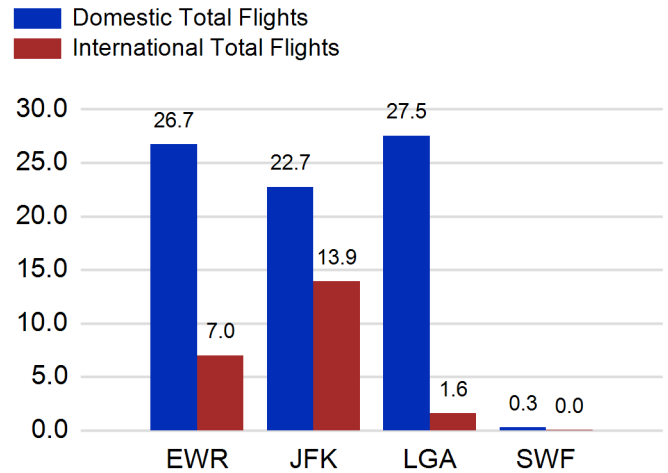
SWF Summary

	Current Month	YoY %
Total Revenue Pax	18,215	25.0
Total Flights Including GA	2,004	6.0
Total Cargo (Short Tons)	1,681	-4.2

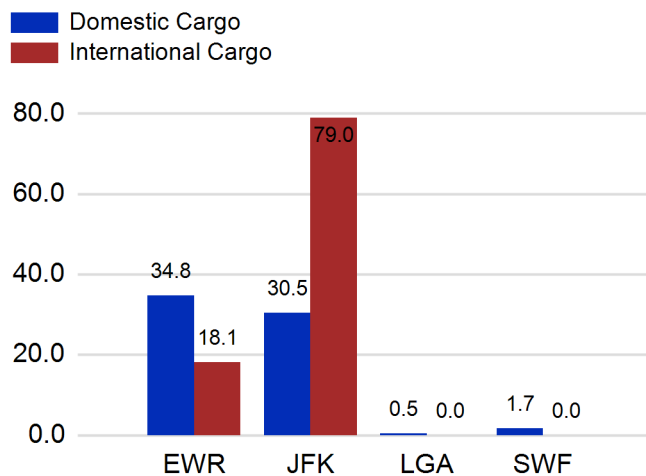
Total Passengers by Airport (Millions)



Total Flights by Airport (Thousands)



Total Cargo by Airport (Thousands of Short Tons)



12 Months Ending Passenger & Freight Statistics

Top 20 Airlines Ranking by Passengers & Freight: 12 Months Ending Jan 2023

Airline Name	Domestic	International	Total Pax	% of Tot	Airline Name	Short Tons	% of Tot
United	25,037,089	7,216,027	32,253,116	24.51%	FEDERAL EXPRESS	399,481	17.31%
DELTA	24,678,537	4,900,704	29,579,241	22.48%	UNITED PARCEL	204,794	8.87%
JETBLUE AIRWAYS	15,921,345	5,937,740	21,859,085	16.61%	United	191,167	8.28%
AMERICAN	14,528,634	3,379,987	17,908,621	13.61%	AMERICAN	99,129	4.30%
SPIRIT AIRLINES	4,182,929	0	4,182,929	3.18%	DELTA	98,575	4.27%
SOUTHWEST AIRLINES	2,972,229	0	2,972,229	2.26%	KALITTA AIR LLC	82,400	3.57%
ALASKA AIRLINES	2,372,050	0	2,372,050	1.80%	ABX AIR INC	68,292	2.96%
BRITISH AIRWAYS	0	1,262,698	1,262,698	0.96%	ATLAS AIR	65,597	2.84%
AIR FRANCE	313	1,107,994	1,108,307	0.84%	KOREAN	54,506	2.36%
EMIRATES AIRLINES	0	1,009,862	1,009,862	0.77%	CARGOLUX AIRLINES	54,003	2.34%
VIRGIN ATLANTIC	0	849,411	849,411	0.65%	AIR TRANSPORT INT'L.(BAX Inc.)	53,071	2.30%
LUFTHANSA	0	807,810	807,810	0.61%	BRITISH AIRWAYS	45,342	1.96%
TURKISH AIR	0	729,375	729,375	0.55%	CHINA AIRLINES (CAL)	44,674	1.94%
Avianca Costa Rica	0	668,454	668,454	0.51%	TURKISH AIR	44,093	1.91%
AER LINGUS	0	668,323	668,323	0.51%	VIRGIN ATLANTIC	38,157	1.65%
AIR CANADA	0	620,549	620,549	0.47%	LUFTHANSA CARGO	34,596	1.50%
AIR CANADA	0	589,895	589,895	0.45%	EVA	33,648	1.46%
EL AL	0	541,381	541,381	0.41%	AIR FRANCE	32,297	1.40%
FRONTIER AIRLINES	489,010	0	489,010	0.37%	CATHAY PACIFIC	28,904	1.25%
IBERIA	0	472,326	472,326	0.36%	ASIANA	27,701	1.20%

Passengers & Freight by Market - 12 Months Ending

Market	Passengers	Freight (Short Tons)
TRANSATLANTIC	22,714,705	917,635
CANADA	2,636,607	2,759
CARIBBEAN + BERMUDA	7,689,997	13,831
CENTRAL AND SOUTH AMERICA	4,028,347	62,140
DOMESTIC	88,425,221	972,767
MEXICO	2,304,776	14,244
TRANSPACIFIC	1,445,160	315,731
PUERTO RICO	2,344,486	8,521

Additional Data

Airline Schedules (ADI): Non-Stop Destinations

	Region	Flights (Daily)	Cities
Domestic	Domestic	2376.2	111
	Puerto Rico	40.2	3
	Total	2,416.5	114.00
International	Canada	156.8	8
	Caribbean & Bermuda	147.9	25
	Central & South America	71.0	18
	Mexico	49.7	6
	Trans-Atlantic	272.2	51
	Trans-Pacific	26.7	10
	Unknown	0.5	1
	Total	724.8	119.00
	Total	3,141.3	233.00

Airline Schedules (ADI): Carriers & Aircraft Type

	Aircraft Type	Flights (Daily)	Carriers
Domestic	Commuter	855.3	4
	General Aviation	2.0	1
	Narrow Body	1490.2	10
	Unknown	2.0	1
International	Wide Body	67.0	4
	Total	2,416.5	20.00
	Commuter	143.3	5
	Narrow Body	291.1	22
	Wide Body	290.4	54
Total	724.8	81.00	
Total	Total	3,141.3	101.00

Passenger Demographics (ACI ASQ Surveys - 2021)

Connect

Local Origin/Destination	78.6%
Connecting	21.4%

Transport Mode

Bus/Shuttle	4.7%
Other	18.7%
Private/Company Car	37.5%
Rail/Subway	7.3%
Rental Car	4.6%
Taxi/Limo	27.2%

Trip Type

Business	14.0%
Leisure	86.0%

Annual Flights

1-2	61.5%
3-5	24.9%
6-10	9.0%
11-20	2.8%
21+	1.8%

Gender

M	49.6%
F	50.4%

Residency

United States	81.0%
Other	19.0%

Ground Transportation

	<u>Curr Month</u>	<u>% Change</u>
<i>Paid Parked Cars</i>	343,738	9.8
<i>GTC Bookings</i>	0	
<i>Airport Coach Passengers</i>	24,847	95.5
<i>Taxis Dispatched</i>	321,836	52.1

	<u>Curr Month</u>	<u>% Change</u>
<i>Total Air Train Passengers</i>	2,717,469	85.1
<i>Paid Howard Beach Passengers</i>	114,824	83.5
<i>Paid Jamaica Passengers</i>	401,110	60.2
<i>Paid EWR Passengers</i>	178,300	66.5
<i>On-Airport (Unpaid) Passengers</i>	2,023,235	93.1

Airlines for American Carriers (USA)

	<u>Curr Month</u>	<u>% Change</u>
<i>Freight:revenue ton miles (000)</i>	0	

Regional Airports: Other

	<u>Curr Month</u>	<u>% Change</u>
<i>TEB flight movements</i>	12,071	14.5
<i>ISP Total passengers</i>	0	-100.0
<i>HPN Total passengers</i>	169,890	96.9