

752  
974.905  
044.4  
C.1

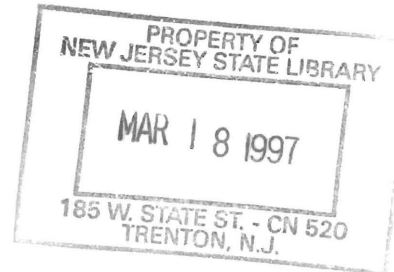
DEPARTMENT OF HUMAN SERVICES  
INTER-OFFICE COMMUNICATION

DATE February 20, 1997

TO William Waldman  
Commissioner

FROM Karen Highsmith  
Director

*K Highsmith*



SUBJECT CURRENT PROGRAM STATISTICS

Attached please find CURRENT PROGRAM STATISTICS, including the FDP Statistical Summary for November 1996. Also included are explanatory notes for the various data elements.

Should you have any questions, please feel free to call me.

KH:kas:c

Attachments

c Guhl  
Grant  
Miller  
Tencza

*State of New Jersey*  
*Department of Human Services*  
*Division of Family Development*



**CURRENT  
PROGRAM  
STATISTICS**

**November 1996**  
**Karen Highsmith, Director**

State of New Jersey  
 Department of Human Services  
 Division of Family Development

**CURRENT PROGRAM STATISTICS**  
 November 1996

TABLE OF CONTENTS

**Page**

<b>Highlights of Current Program Statistics .....</b>	<b>1-3</b>
 <b>Statistics by County, November 1996</b>	
Table 1 AFDC .....	4
Graph 1 Current AFDC Families.....	4
Table 2 Food Stamp Program.....	5
Graph 2 Current Food Stamp Households/Persons .....	5
Table 3 AFDC/SSI Emergency Assistance Program .....	6
Graph 3 Current AFDC Families Receiving Emergency Assistance.....	6
Table 4 Family Development Program.....	7
 <b>State Summary, 1994 - 1996</b>	
Table 5 AFDC, November 1994 - November 1996.....	8
Graph 4 Families Receiving AFDC, 11/94 - 11/96 .....	8
Table 6 Food Stamp Program, November 1994 - November 1996 .....	9
Graph 5 Food Stamp Households, 11/94 - 11/96 .....	9
Graph 6 Food Stamp Recipients, 11/94 - 11/96.....	10
Table 7 AFDC Emergency Assistance Program, November 1994 - November 1996.....	11
Graph 7 AFDC Families Receiving Emergency Assistance, 11/94 - 11/96 .....	11
Table 8 JOBS/FDP Participation Rates, by County and Statewide, November 1994 - November 1996.....	12
Graph 8 JOBS/FDP Participation Rates, 11/94 - 11/96 .....	12-13
Table 9 General Assistance, and GA Emergency Assistance, September 1994 - September 1996 .....	14
Graph 9 General Assistance Recipients, 9/94-9/96 .....	14
Table 10 Child Support and Paternity, Fiscal Years 1994-1996 .....	15
<b>Explanatory Notes.....</b>	<b>16-17</b>
 <b>Supplement</b>	
Table 11 General Assistance Recipients and EA Payments by County and Municipality, September 1996.....	18

## Highlights of Current Program Statistics

### AFDC (Tables 1 and 5, Graphs 1 and 4)

#### **106,000 eligible families in New Jersey were receiving AFDC as of the end of November 1996:**

- **96,000** single head of household families (Regular AFDC, C segment).
- Among two-parent families, about **2300** Unemployed Parent families (F Segment) and less than **2800** State AFDC families (N Segment).
- **5000** Medicaid Only families.
- The largest numbers of families by county: Essex with **27,300**, Hudson with **17,100**, and Camden County with **12,300**. (53.3 percent of all AFDC families)
- Other counties ranged from under **140** families in Hunterdon to **6,900** in Passaic County, with seven counties below **1000** families.

#### **There were 1000 fewer eligible AFDC families in November 1996 than in October 1996, with a decline of 16,000 over the past two years. Half of that decline occurred in the last seven months.**

- There were about **900** fewer eligible C segment families in November 1996 than in October 1996 and **14,000** less than two years ago.
- F segment families declined from **3800** in November 1994 to **2300** in November 1996.
- State AFDC (N segment) was **3350** in November 1994 and slowly declined to about **2750** by November 1996.
- Medicaid Only families remained at or below **5000** in 1994, but averaged nearly **5200** for 1995. For the first eleven months of 1996 they have averaged close to **5100**.

### **FOOD STAMP PROGRAM** (Tables 2 and 6, Graphs 2, 5, and 6)

#### **At the end of November 1996, less than 211,000 households were participating in the Food Stamp Program:**

- **100,000** AFDC households with **317,000** persons.
- **110,000** Other Low Income households with **167,000** persons.
- With a total of more than **484,000** persons, including nearly **233,000** adults and nearly **252,000** children
- **48.8 percent** of the households were in Essex (**53,500**), Hudson (**29,000**) and Camden (**20,400**) Counties.
- In November, the number of adults exceeded the number of children in Food Stamp households in **eight** counties (Bergen, Hunterdon, Middlesex, Monmouth, Morris, Somerset, Sussex, and Warren).

**Food Stamp households in New Jersey remained in the 220,000 to 223,000 range from November 1994 through June 1996 except for a peak in March 1995 of almost 225,000. With less than 211,000 total Food Stamp households in November 1996, there has been a decline of 12,000 since May.**

- The number of Other Low Income households has exceeded the number of AFDC(FS) households since November 1995, with a difference of nearly **10,000** in November 1996. The average number of Other Low Income households receiving Food Stamps was **106,000** for all of 1994 and more than **112,000** for the first eleven months of 1996. AFDC(FS) households averaged nearly **115,000** for 1994, and about **106,000** for the first eleven months of 1996.
- After a peak of **529,000** in March 1995, the number of Total Recipients has been moving downward. Remaining near **515,000** in the Spring of 1996, the level then dropped substantially, and by November was less than **485,000**.
- The number of Recipient Adults averaged **246,000** for 1994 through the first five months of 1996. From May through November the number declined from about **247,000** to less than **233,000**.
- After a peak of more than **279,000** in March 1995, the number of Recipient Children has been moving downward. By November 1996 the level was below **252,000**.

## **EMERGENCY ASSISTANCE** (Tables 3, 7 and 9, Graphs 3, 7 and 9)

**In November 1996 4059 eligible AFDC families and 275 SSI recipients received Emergency Assistance (EA) payments in New Jersey. For AFDC families this included:**

- **1507** families with Temporary Rental Assistance (TRA)
- **237** motel placements and **294** emergency shelter placements
- All other AFDC-EA accounted for **2021** families, including back rent, back utilities, security deposits, furnishings, clothing and food allowance, or transitional housing.
- **1094** AFDC families in Essex County received EA, with **590** in Middlesex, and **444** in Passaic. All other counties had between **2** and **346**, with twelve counties **under 100**.

**In the past two years, the average number of AFDC families receiving EA payments was 7300 in 1994, 5800 in 1995, and 4800 for eleven months of 1996.**

- The number of AFDC families provided TRA each month has declined steadily from an average of **3200** in 1994 to **1700** for eleven months of 1996.
- Emergency Shelter has been provided to an average of **under 400** AFDC families for 1994 through eleven months of 1996. Motel Housing declined from an average of close to **500** in 1994 to about **300** for eleven months of 1996.
- An average of **3300** families received Other EA in 1994, **2800** in 1995, and about **2400** for eleven months of 1996. The number had dropped below **2100** in February and November 1996.

**For 1994 there were an average of 7800 GA EA recipients, 7400 for 1995, and 7100 for the first nine months of 1996. TRA payments were made to an average of 4700 recipients in 1994, 4400 in 1995, and less than 4300 in the first nine months of 1996.**

## **JOBS/FDP PARTICIPATION RATES** (Table 8, Graph 8)

November 1996 was the second month with a Statewide JOBS/FDP participation rate of almost 32 percent, nearly unchanged from October which was the highest in the last two years. The rate is nearly five percentage points above November 1995 and ten percentage points above two years ago when the rate was only 21.8 percent. A clear upward shift has been evident over the past two years. All Counties have been over 20 percent for at least two months.

- Most counties have shown upward movement in participation rates in the past two years, including Burlington, Camden, Cape May, Essex, Gloucester, Hudson, Hunterdon, Middlesex, Monmouth, Ocean, and Passaic. Cumberland has maintained high participation rates, as have Atlantic, Salem, Sussex, and Warren but with greater fluctuations. Morris increased markedly in 1995 and remains at record levels (at or near 100 percent), as did Somerset in 1996, which also exceeded 90 percent in October and November. Bergen, Mercer and Union have had little or no increase overall.
- For November 1996 County rates were distributed as follows:
  - 20 to 29 percent** -- Bergen, Camden, Cape May, Essex, Hudson, Ocean, Union
  - 30 to 39 percent** -- Burlington, Gloucester, Mercer, Monmouth
  - 40 to 49 percent** -- Middlesex, Passaic
  - 50 percent +** -- Atlantic, Cumberland, Hunterdon, Morris, Salem, Somerset, Sussex, Warren
- From October to November 1996, participation rates increased in 8 of the State's 21 counties.

## **GENERAL ASSISTANCE** (Table 9, Graph 9)

September 1996 (the latest available information) had the lowest number of GA recipients in the two year period, and was the third consecutive month with less than 31,000. GA recipients averaged 36,000 for 1994, less than 34,000 in 1995 and the less than 33,000 for the first nine months of 1996.

- The number of employable GA recipients closely mirrored the changes in total GA recipients. The September level was the first month **below 20,000**, following three months **below 21,000**. Employable GA recipients averaged about **24,000** for 1994, and about **22,000** in 1995 and the first nine months of 1996.
- Over the two year period Unemployable GA recipients remained within a relatively narrow range. The level remained around **11,000 to 12,000** from September 1994 through October 1995. It declined to about **10,000** from November 1995 through January 1996, and remained **between 10,000 and 11,000** through September 1996.

## **CHILD SUPPORT AND PATERNITY** (Table 10)

Total distributions of the Child Support and Paternity Program increased by 8.9 percent from \$472.7 million in FFY 1994 to \$515 million in FFY 1995, and by 4.2 percent to more than \$536.6 million in FFY 1996.

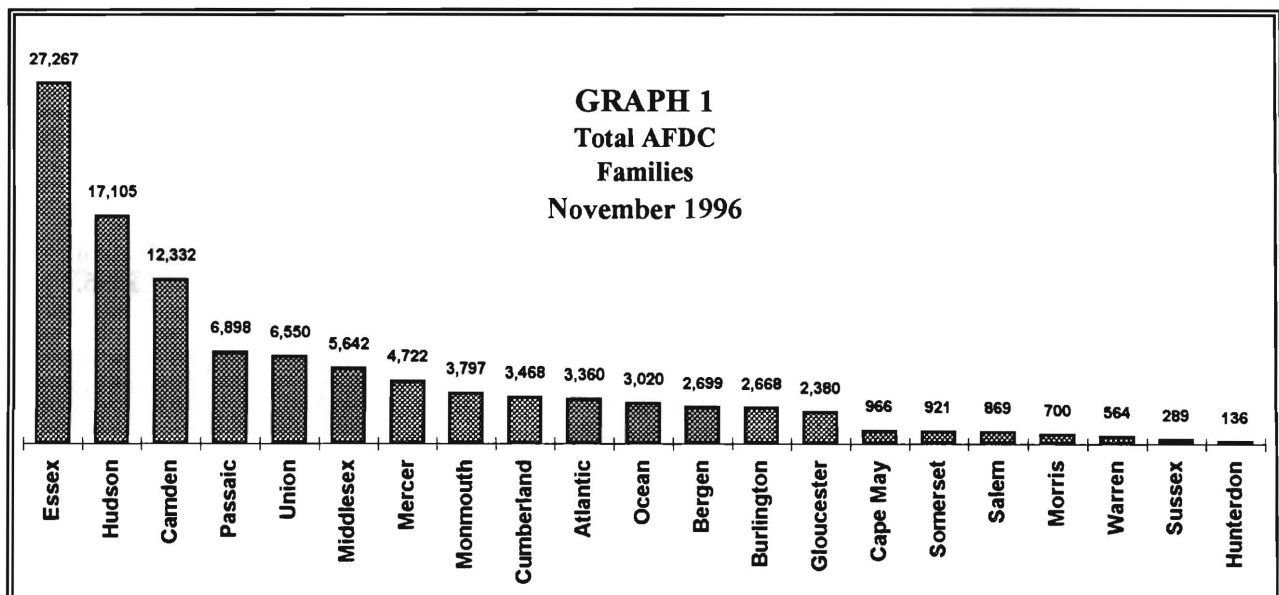
New Jersey Department of Human Services  
 Division of Family Development

**Table 1**  
**AFDC Program**

**NUMBER OF APPLICATIONS AND TERMINATIONS DURING REPORT MONTH, AND  
 NUMBER OF ELIGIBLE FAMILIES RECEIVING AFDC AT END OF REPORT MONTH  
 November 1996**

County	Applications Approved	Terminations	Regular AFDC (C Segment)	Unemployed Parents(F)	State AFDC(N)	Medicaid Only	Total AFDC
Atlantic	246	177	3,108	74	51	127	3,360
Bergen	101	137	2,414	105	110	70	2,699
Burlington	224	278	2,328	62	71	207	2,668
Camden	728	843	10,877	388	369	698	12,332
Cape May	111	106	829	32	55	50	966
Cumberland	284	254	2,981	131	152	204	3,468
Essex	874	1,166	26,007	339	203	718	27,267
Gloucester	192	220	2,052	94	62	172	2,380
Hudson	450	687	15,329	262	584	930	17,105
Hunterdon	17	27	111	3	5	17	136
Mercer	406	468	4,197	93	95	337	4,722
Middlesex	339	460	4,717	189	236	500	5,642
Monmouth	219	268	3,537	60	131	69	3,797
Morris	44	71	643	16	14	27	700
Ocean	222	243	2,577	110	122	211	3,020
Passaic	320	409	6,409	206	225	58	6,898
Salem	95	91	772	10	31	56	869
Somerset	76	124	749	35	28	109	921
Sussex	32	42	231	8	2	48	289
Union	362	442	5,892	92	175	391	6,550
Warren	32	36	478	20	31	35	564
<b>NJ TOTAL</b>	<b>5,374</b>	<b>6,549</b>	<b>96,238</b>	<b>2,329</b>	<b>2,752</b>	<b>5,034</b>	<b>106,353</b>

Data is derived from NJ Division of Family Development's FAMIS report #FF-012



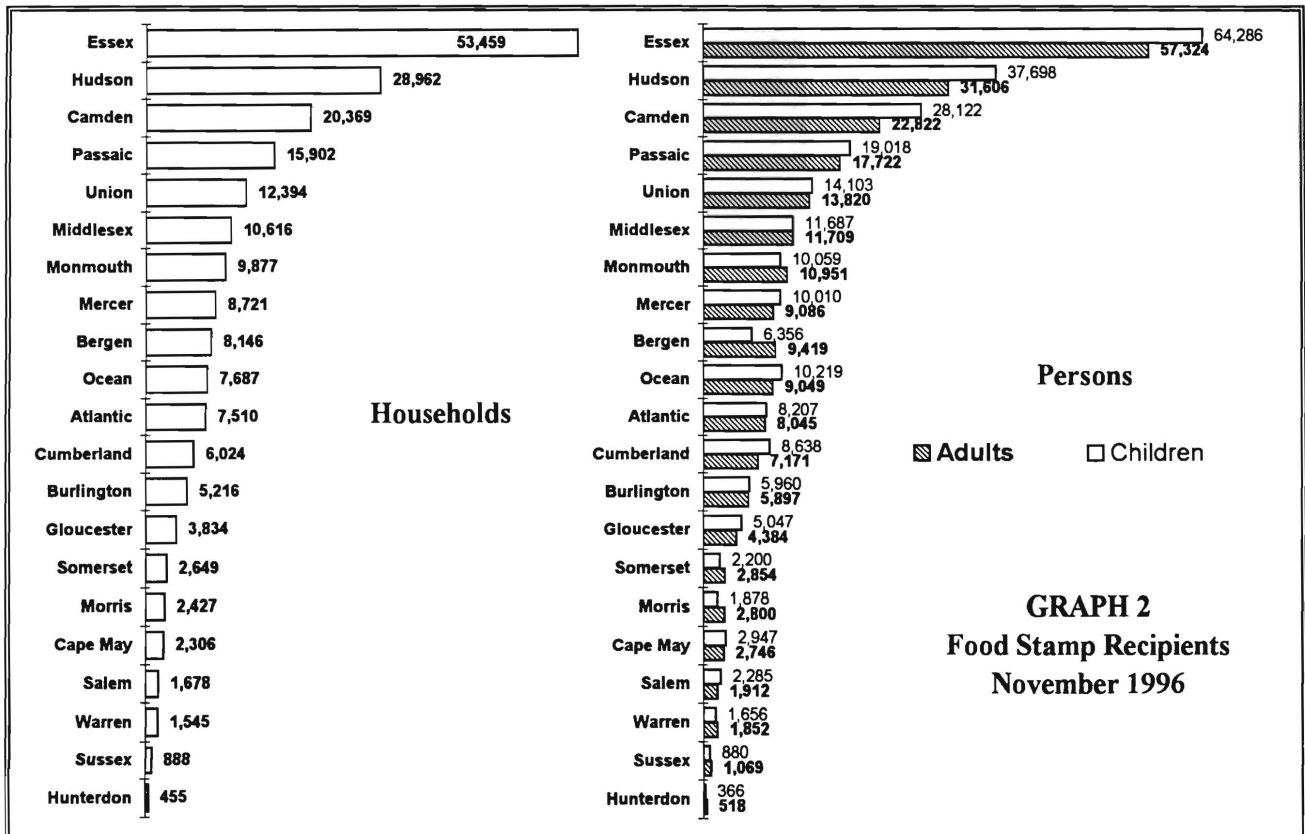
New Jersey Department of Human Services  
Division of Family Development

**Table 2**  
**FOOD STAMP Program**  
**NUMBER OF ATP'S ISSUED TO HOUSEHOLDS, PERSONS, ADULTS**  
**AND CHILDREN AT THE END OF THE REPORT MONTH**  
**November 1996**

County	HOUSEHOLDS			PERSONS				
	AFDC	Other low income	TOTAL	TOTAL	AFDC	Other low income	Adults	Children
Atlantic	3,058	4,452	7,510	16,252	9,936	6,316	8,045	8,207
Bergen	2,465	5,681	8,146	15,775	7,304	8,471	9,419	6,356
Burlington	2,339	2,877	5,216	11,857	7,270	4,587	5,897	5,960
Camden	11,670	8,699	20,369	50,944	38,226	12,718	22,822	28,122
Cape May	1,092	1,214	2,306	5,693	3,654	2,039	2,746	2,947
Cumberland	3,365	2,659	6,024	15,809	11,467	4,342	7,171	8,638
Essex	26,804	26,655	53,459	121,610	83,422	38,188	57,324	64,286
Gloucester	2,132	1,702	3,834	9,431	6,724	2,707	4,384	5,047
Hudson	16,013	12,949	28,962	69,304	49,210	20,094	31,606	37,698
Hunterdon	120	335	455	884	372	512	518	366
Mercer	4,269	4,452	8,721	19,096	13,162	5,934	9,086	10,010
Middlesex	4,999	5,617	10,616	23,396	15,055	8,341	11,709	11,687
Monmouth	3,679	6,198	9,877	21,010	11,710	9,300	10,951	10,059
Morris	626	1,801	2,427	4,678	1,883	2,795	2,800	1,878
Ocean	3,172	4,515	7,687	19,268	10,474	8,794	9,049	10,219
Passaic	6,488	9,414	15,902	36,740	21,521	15,219	17,722	19,018
Salem	883	795	1,678	4,197	2,881	1,316	1,912	2,285
Somerset	852	1,797	2,649	5,054	2,516	2,538	2,854	2,200
Sussex	267	621	888	1,949	807	1,142	1,069	880
Union	5,571	6,823	12,394	27,923	17,842	10,081	13,820	14,103
Warren	547	998	1,545	3,508	1,727	1,781	1,852	1,656
<b>NJ TOTAL</b>	<b>100,411</b>	<b>110,254</b>	<b>210,665</b>	<b>484,378</b>	<b>317,163</b>	<b>167,215</b>	<b>232,756</b>	<b>251,622</b>

ATP - Authorization to Participate

Data is derived from NJ Division of Family Development's FAMIS report # FB-160.



New Jersey Department of Human Services  
 Division of Family Development

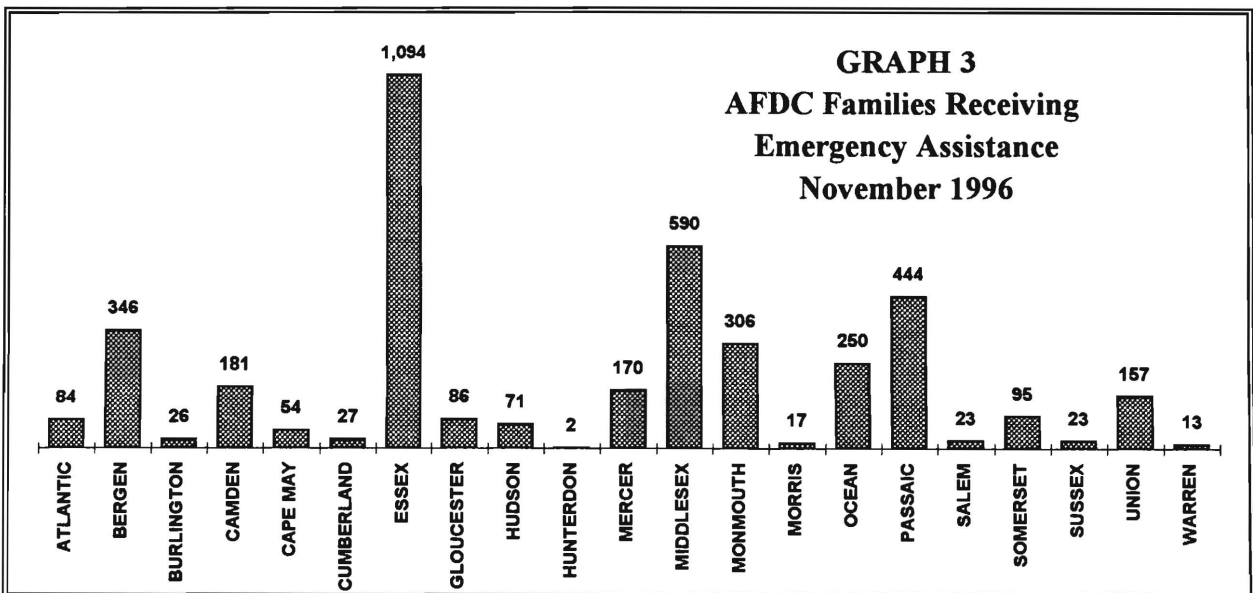
**Table 3**  
**AFDC/SSI EMERGENCY ASSISTANCE**

**NUMBER OF ELIGIBLE FAMILIES RECEIVING EMERGENCY ASSISTANCE PAYMENTS**  
**(UNDUPLICATED CASES)**

November 1996

County	AFDC Families Receiving Emergency Assistance					SSI Recipients Receiving EA
	TOTAL AFDC-EA	Temporary Rental Assist.	Motel Housing	Emergency Shelter	Other AFDC-EA	
ATLANTIC	84	19	7	22	36	20
BERGEN	346	185	33	19	109	12
BURLINGTON	26	1	2	20	3	3
CAMDEN	181	69	2	9	101	4
CAPE MAY	54	10	2	0	42	6
CUMBERLAND	27	3	3	5	16	7
ESSEX	1,094	480	8	103	503	31
GLOUCESTER	86	37	3	30	16	4
HUDSON	71	16	4	4	47	5
HUNTERDON	2	0	0	0	2	0
MERCER	170	81	18	0	71	18
MIDDLESEX	590	318	24	20	228	20
MONMOUTH	306	125	51	6	124	15
MORRIS	17	0	1	5	11	10
OCEAN	250	119	37	0	94	46
PASSAIC	444	6	6	24	408	38
SALEM	23	7	6	2	8	2
SOMERSET	95	7	12	0	76	18
SUSSEX	23	2	6	4	11	7
UNION	157	22	4	18	113	9
WARREN	13	0	8	3	2	0
<b>NJ TOTAL</b>	<b>4,059</b>	<b>1,507</b>	<b>237</b>	<b>294</b>	<b>2,021</b>	<b>275</b>

Derived from NJ Division of Family Development FAMIS REports #FM457 and #FM430-03A



NEW JERSEY DEPARTMENT OF HUMAN SERVICES  
DIVISION OF FAMILY DEVELOPMENT

**TABLE 4**  
**FAMILY DEVELOPMENT PROGRAM**  
**STATISTICAL SUMMARY**

COUNTY	SNAPSHOT OF ACTIVITY AS OF NOVEMBER 1996				ACTIVITY FOR MONTH OF NOVEMBER 1996					
	TOTAL NONEXMT JOBS/FDP RECI- PIENTS	EMPLOYMENT DIRECTED ACTIVITIES(1)			PARTIC IN EDAs & RECEIVE SUPPORT SERVICES		PARTIC W/ 1st C M INTV	# EMPL THIS MONTH & STILL REC AFDC	# CLSD ON FAMIS RE: EARNINGS (2)	POST AFDC & REC CHILD CARE
		TRAIN- ING	EDUCA- TION	JOB SEARCH	TREs	CHILD CARE				
ATLANTIC	1,098	312	135	64	230	165	155	43	63	201
BERGEN	1,721	219	113	30	188	138	39	13	48	75
BURLINGTON	1,275	244	86	57	321	166	117	45	52	196
CAMDEN	8,484	730	444	98	742	546	132	31	152	230
CAPE MAY	543	95	29	56	60	25	72	1	17	12
CUMBERLAND	1,359	288	168	122	488	220	172	48	58	120
ESSEX	16,663	1,770	1,027	250	2,178	1,416	348	109	219	184
GLOUCESTER	997	220	102	55	383	113	93	12	42	63
HUDSON	10,657	1,250	1,038	190	1,815	902	196	57	219	234
HUNTERDON	70	6	19	12	10	9	8	7	11	13
MERCER	2,936	292	251	42	219	233	58	30	59	137
MIDDLESEX	2,947	296	231	321	404	143	202	127	116	132
MONMOUTH	2,390	299	226	148	464	328	72	56	71	187
MORRIS	332	206	28	67	53	93	26	16	25	57
OCEAN	1,635	184	92	85	87	96	173	29	73	167
PASSAIC	3,570	984	318	60	995	426	201	46	108	128
SALEM	357	75	99	19	129	68	17	8	14	52
SOMERSET	448	76	74	17	83	70	14	13	20	43
SUSSEX	126	32	33	23	37	33	5	7	17	35
UNION	3,669	349	240	204	431	208	86	26	102	138
WARREN	342	63	39	40	34	26	12	6	18	25
STATE	61,619	7,990	4,792	1,960	9,351	5,424	2,198	730	1,504	2,429

(1) - The number of participants receiving support services may occasionally exceed the number actively participating in EDAs. This can result from extended assessment or evaluation activities, or the issuance of bridge payments.

(2) - FAMIS file date: 11/16/96

**Table 5**

**AFDC Program**

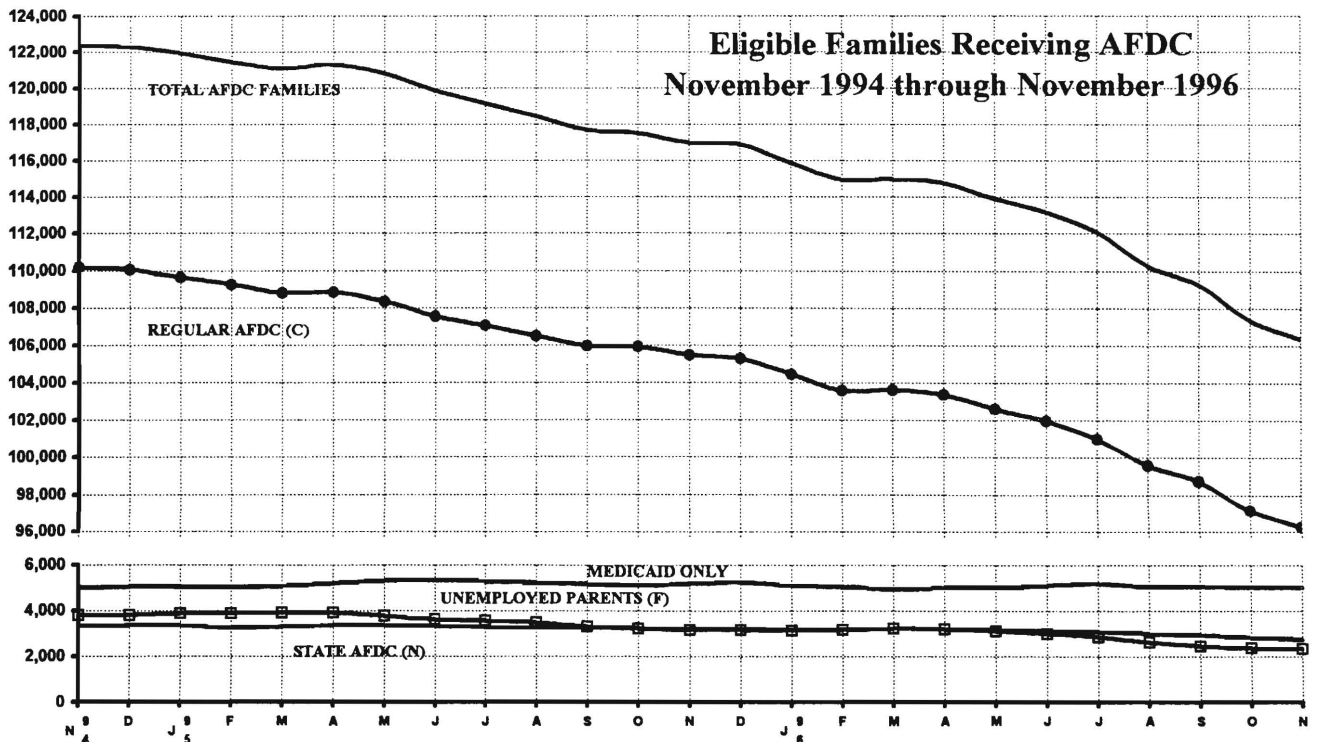
**NUMBER OF APPLICATIONS AND TERMINATIONS DURING REPORT MONTH, AND  
NUMBER OF ELIGIBLE FAMILIES RECEIVING AFDC AT END OF REPORT MONTH**

**November 1994 through November 1996**

	Applications Approved	Terminations	Regular AFDC (C Segment)	Unemployed Parents(F)	State AFDC(N)	Medicaid Only	Total AFDC
1994 Nov	6,344	6,796	110,181	3,814	3,350	5,002	122,347
Dec	5,682	5,890	110,070	3,789	3,360	5,065	122,284
Average (12 MONTHS)	6,014	6,150	110,901	4,195	3,351	4,928	123,375
1995 Jan	5,583	5,944	109,645	3,875	3,358	5,045	121,923
Feb	5,964	6,515	109,261	3,878	3,270	5,016	121,425
Mar	5,810	6,221	108,800	3,903	3,305	5,088	121,096
Apr	7,096	7,086	108,822	3,907	3,365	5,209	121,303
May	5,288	5,784	108,343	3,773	3,369	5,328	120,813
Jun	5,558	6,458	107,541	3,639	3,336	5,358	119,874
Jul	5,977	6,781	107,028	3,574	3,286	5,293	119,181
Aug	5,547	6,294	106,475	3,489	3,260	5,239	118,463
Sep	5,922	6,647	105,943	3,303	3,260	5,175	117,681
Oct	7,062	7,359	105,917	3,224	3,257	5,110	117,508
Nov	6,083	6,660	105,445	3,164	3,199	5,189	116,997
Dec	5,582	5,775	105,287	3,165	3,189	5,258	116,899
Average	5,956	6,460	107,376	3,575	3,288	5,192	119,430
1996 Jan	5,332	6,236	104,430	3,139	3,173	5,113	115,855
Feb	5,217	6,283	103,561	3,161	3,170	5,060	114,952
Mar	6,317	6,302	103,598	3,230	3,217	4,956	115,001
Apr	6,896	7,241	103,352	3,192	3,211	5,040	114,795
May	5,335	6,152	102,600	3,112	3,163	5,038	113,913
Jun	5,319	6,121	101,947	2,999	3,117	5,116	113,179
Jul	5,874	7,027	100,968	2,843	3,073	5,200	112,084
Aug	5,014	6,789	99,567	2,638	2,993	5,053	110,251
Sep	6,311	7,440	98,744	2,462	2,933	5,097	109,236
Oct	5,213	7,015	97,152	2,368	2,822	5,026	107,368
Nov	5,374	6,549	96,238	2,329	2,752	5,034	106,353
Average	5,655	6,650	101,105	2,861	3,057	5,067	112,090

Data is derived from NJ Division of Family Development's FAMIS report #FF-012

**GRAPH 4**



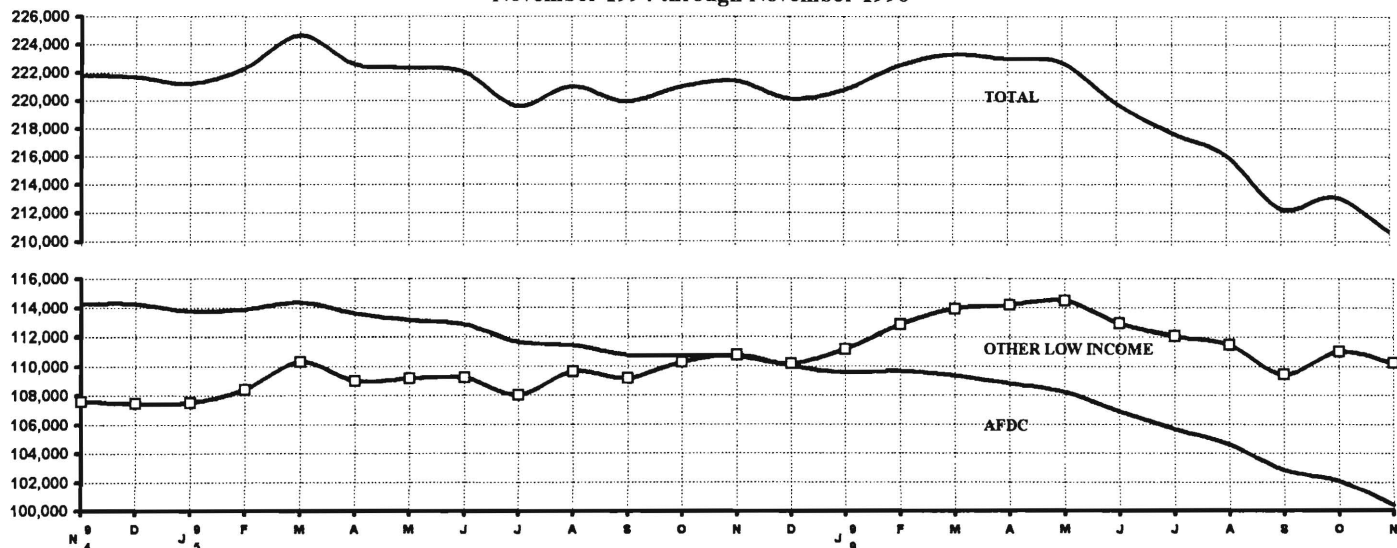
New Jersey Department of Human Services  
 Division of Family Development

**TABLE 6**  
**FOOD STAMP Program State Summary**  
**NUMBER OF ATP'S ISSUED TO HOUSEHOLDS, PERSONS**  
**ADULTS AND CHILDREN AT THE END OF THE REPORT MONTH**  
 November 1994 through November 1996

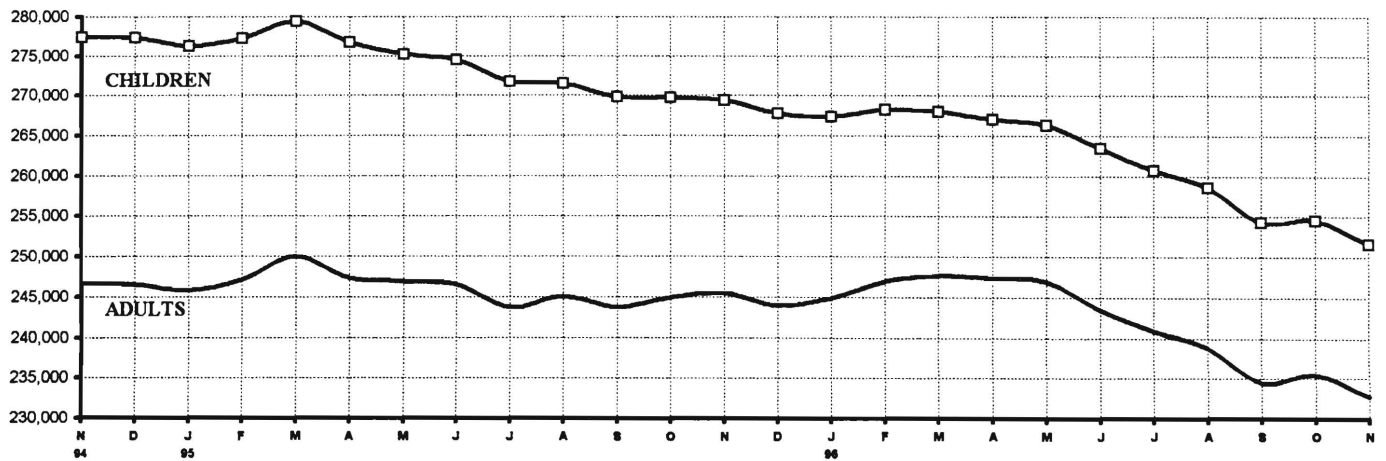
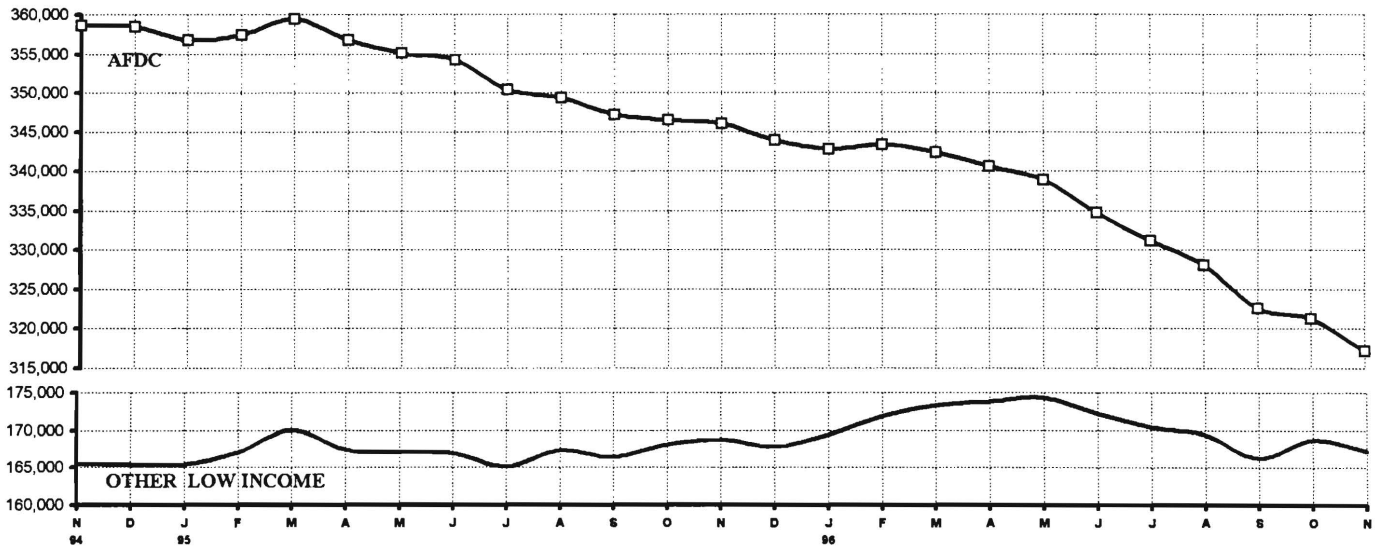
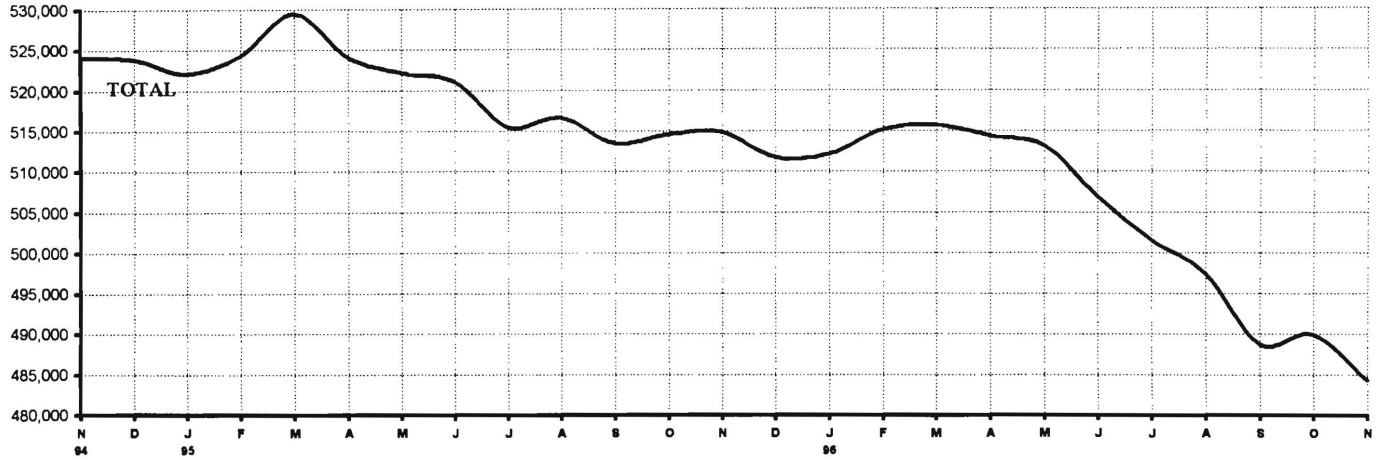
	HOUSEHOLDS			PERSONS				
	AFDC	Other low income	TOTAL	TOTAL	AFDC	Other low income	Adults	Children
1994 Nov	114,251	107,577	221,828	524,090	358,582	165,508	246,659	277,431
Dec	114,232	107,467	221,699	523,825	358,446	165,379	246,517	277,308
AVERAGE (12 months)	114,789	105,924	220,714	525,325	361,323	164,003	246,043	279,282
1995 Jan	113,691	107,493	221,184	522,125	356,763	165,362	245,837	276,288
Feb	113,830	108,421	222,251	524,344	357,419	166,925	247,107	277,237
Mar	114,339	110,279	224,618	529,456	359,404	170,052	249,994	279,462
Apr	113,588	108,991	222,579	524,102	356,717	167,385	247,367	276,735
May	113,125	109,171	222,296	522,173	355,099	167,074	246,949	275,224
Jun	112,827	109,198	222,025	521,084	354,211	166,873	246,557	274,527
Jul	111,635	107,978	219,613	515,478	350,378	165,100	243,727	271,751
Aug	111,415	109,603	221,018	516,618	349,372	167,246	245,110	271,508
Sep	110,760	109,154	219,914	513,517	347,126	166,391	243,723	269,794
Oct	110,697	110,268	220,965	514,598	346,519	168,079	244,911	269,687
Nov	110,630	110,763	221,393	514,823	346,034	168,789	245,455	269,368
Dec	109,992	110,155	220,147	511,727	343,955	167,772	243,965	267,762
AVERAGE	112,211	109,290	221,500	519,170	351,916	167,254	245,892	273,279
1996 Jan	109,554	111,166	220,720	512,165	342,778	169,387	244,801	267,364
Feb	109,649	112,813	222,462	515,181	343,314	171,867	246,961	268,220
Mar	109,364	113,895	223,259	515,676	342,361	173,315	247,695	267,981
Apr	108,787	114,163	222,950	514,375	340,597	173,778	247,380	266,995
May	108,205	114,458	222,663	513,213	338,891	174,322	246,918	266,295
Jun	106,875	112,888	219,763	506,926	334,762	172,164	243,422	263,504
Jul	105,653	112,023	217,676	501,575	331,157	170,418	240,840	260,735
Aug	104,568	111,473	216,041	497,436	328,055	169,381	238,804	258,632
Sep	102,827	109,441	212,268	488,765	322,572	166,193	234,442	254,323
Oct	102,088	111,008	213,096	489,991	321,226	168,765	235,401	254,590
Nov	100,411	110,254	210,665	484,378	317,163	167,215	232,756	251,622
AVERAGE	106,180	112,144	218,324	503,607	332,989	170,619	241,765	261,842

ATP - Authorization to Participate  
 Data is derived from NJ Division of Family Development's FAMIS report # FB-160.

**GRAPH 5**  
**Food Stamp Households**  
 November 1994 through November 1996



**GRAPH 6**  
**Food Stamp Recipients**  
**November 1994 through November 1996**

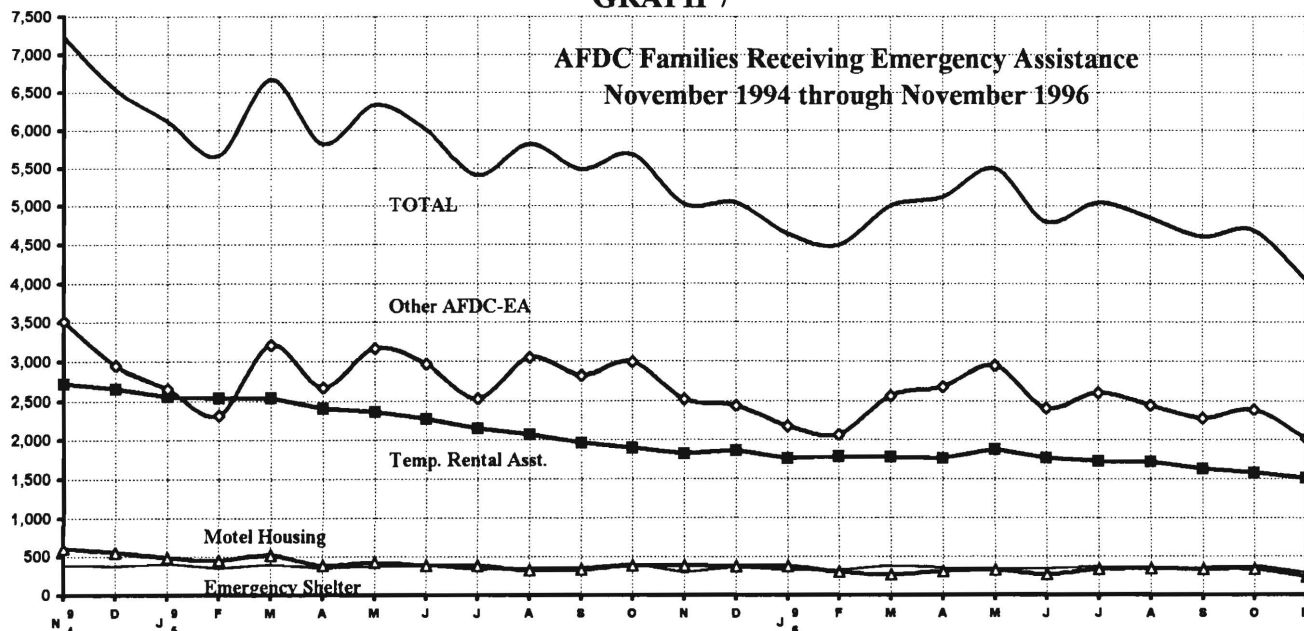


**TABLE 7**  
**EMERGENCY ASSISTANCE Program for AFDC Recipients, State Summary**  
NUMBER OF ELIGIBLE FAMILIES RECEIVING EMERGENCY ASSISTANCE PAYMENTS  
(UNDULICATED CASES)  
November 1994 through November 1996

	Total families receiving EA	Temporary rental assistance	Motel Housing	Emergency Shelter	Other AFDC-EA
1994 NOV	7,231	2,720	604	391	3,516
DEC	6,540	2,658	554	379	2,949
Average (12 months)	7,326	3,218	468	379	3,260
1995 JAN	6,115	2,557	487	413	2,658
FEB	5,664	2,535	456	354	2,319
MAR	6,668	2,542	516	402	3,208
APR	5,815	2,402	387	351	2,675
MAY	6,338	2,364	427	381	3,166
JUN	6,007	2,268	382	387	2,970
JUL	5,402	2,149	389	334	2,530
AUG	5,813	2,068	331	362	3,052
SEP	5,482	1,958	336	364	2,824
OCT	5,678	1,891	388	410	2,989
NOV	5,024	1,816	384	302	2,522
DEC	5,048	1,864	377	369	2,438
Average	5,755	2,201	405	369	2,779
1996 JAN	4,639	1,761	374	325	2,179
FEB	4,490	1,788	305	330	2,067
MAR	5,001	1,779	270	388	2,564
APR	5,118	1,760	309	364	2,685
MAY	5,498	1,873	323	350	2,952
JUN	4,791	1,772	266	341	2,412
JUL	5,044	1,729	335	377	2,603
AUG	4,845	1,716	346	339	2,444
SEP	4,600	1,625	337	362	2,276
OCT	4,683	1,576	334	385	2,388
NOV	4,059	1,507	237	294	2,021
Average	4,797	1,717	312	350	2,417

Data derived from NJ Division of Family Development FAMIS Report #FM457 and #FM430-03a.

**GRAPH 7**

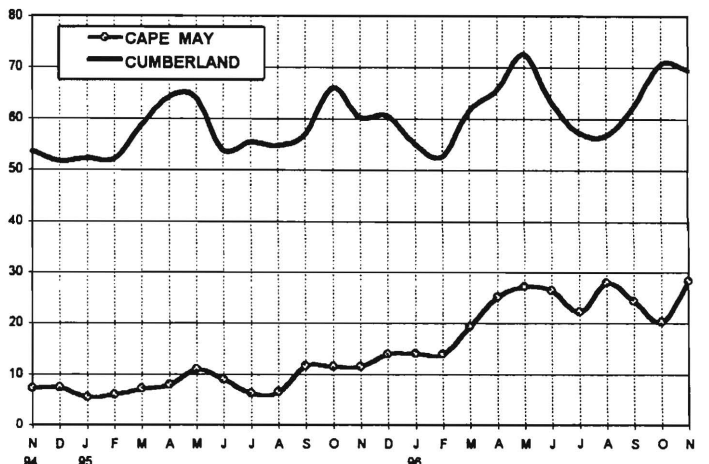
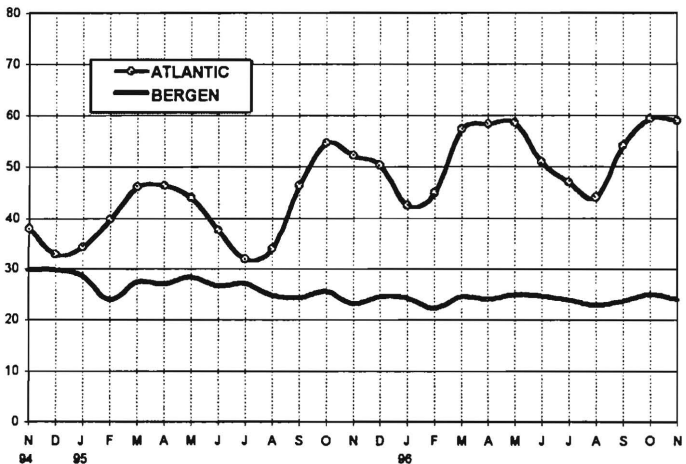
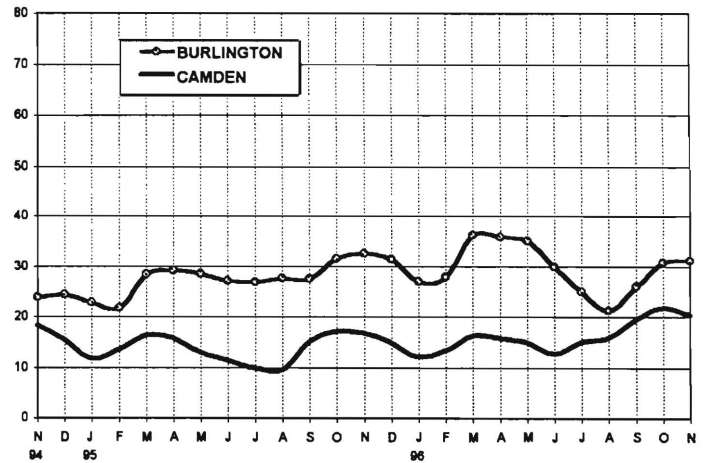
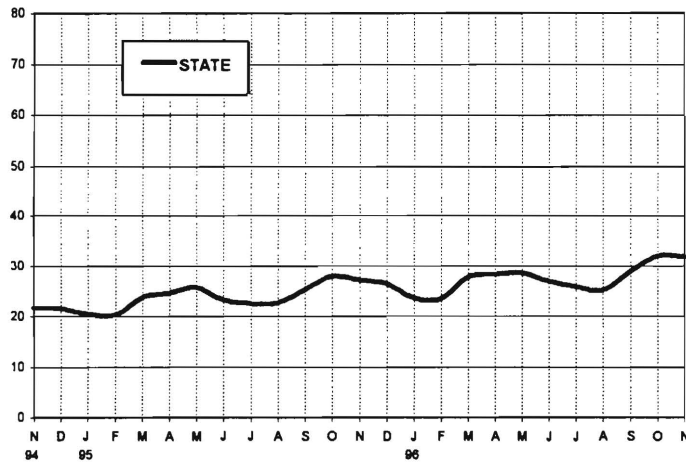


New Jersey Department of Human Services  
Division of Family Development

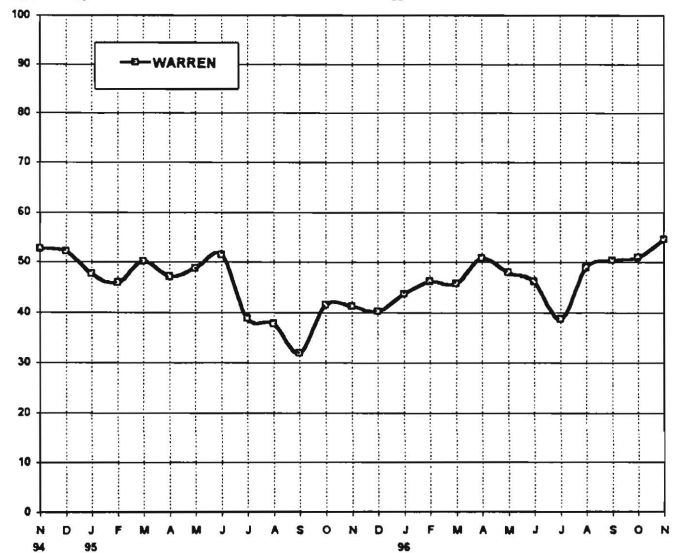
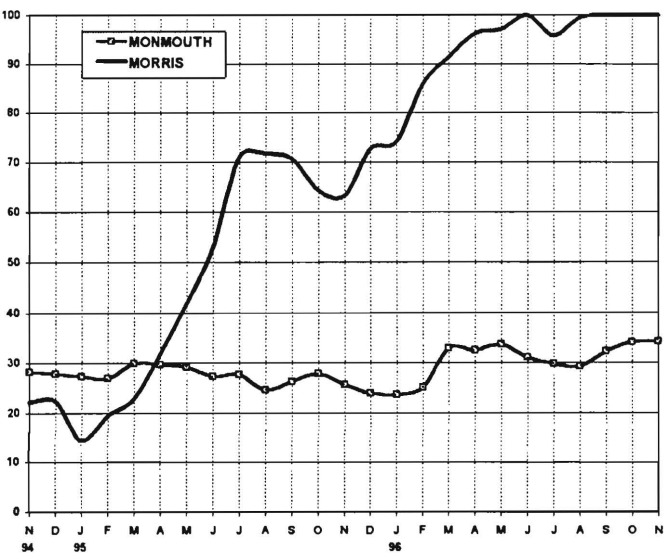
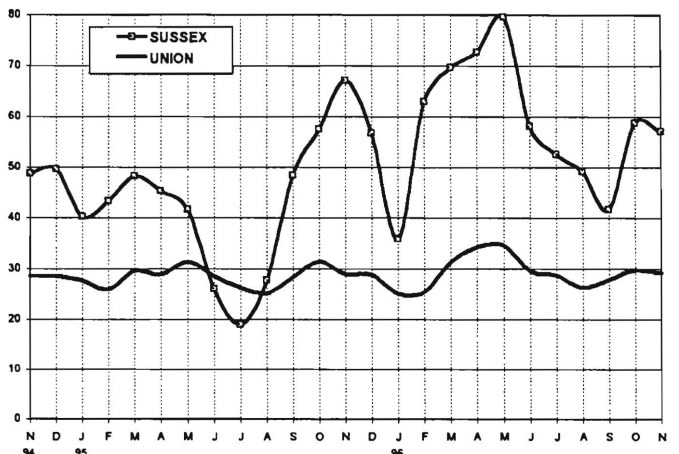
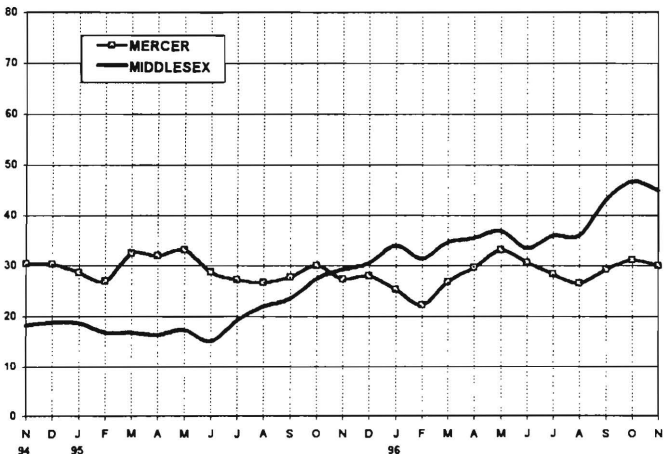
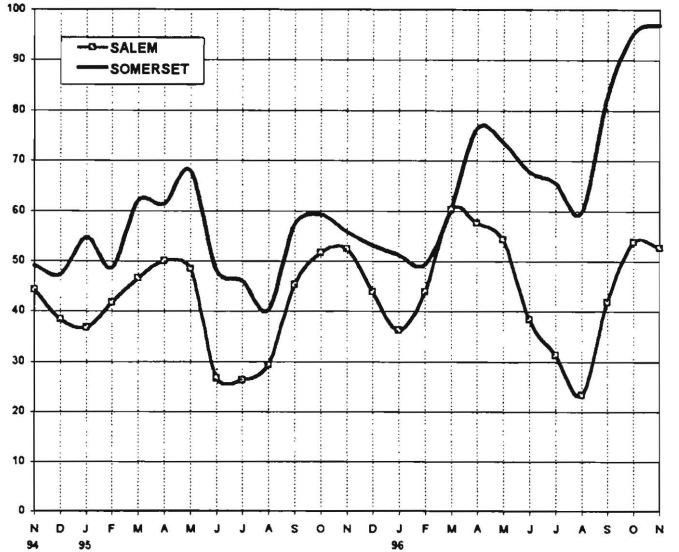
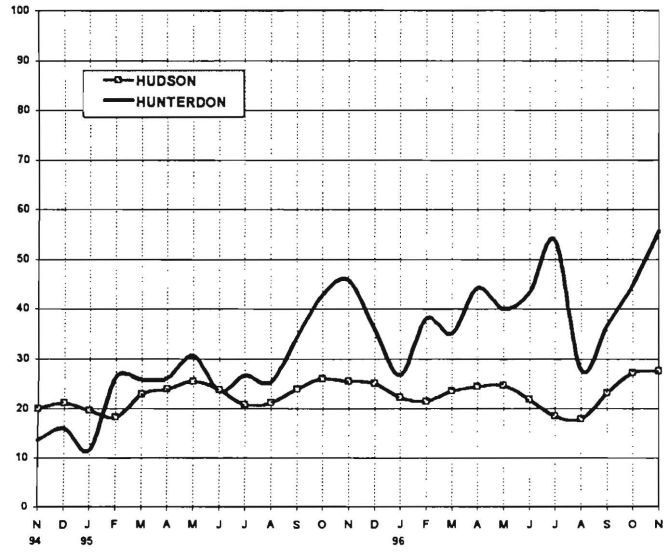
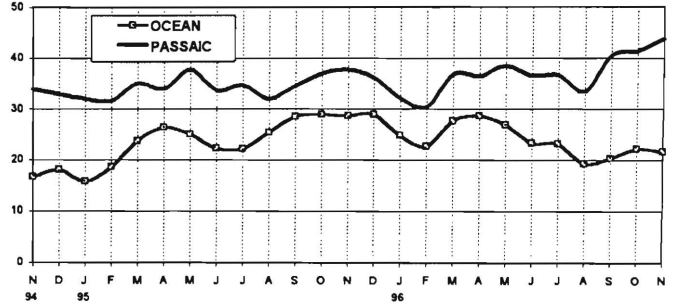
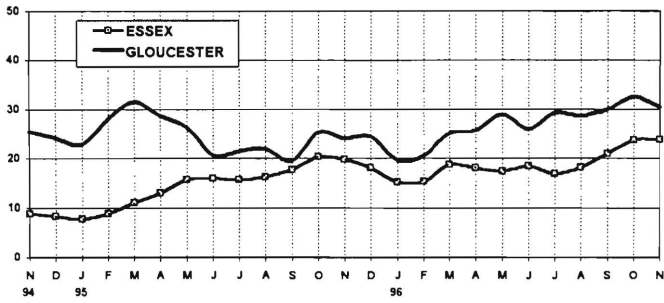
**TABLE 8**  
**JOBS/FDP PARTICIPATION RATES BY MONTH**  
(PERCENT)

	STATE	ATLANTIC	BERGEN	BURLINGTON	CAMDEN	CAPE MAY	CUMBERLAND	ESSEX	GLouceSTER	HUDSON	HUNTERDON	MERCER	MIDDLESEX	MONMOUTH	MORRIS	OCEAN	PASSAIC	SALEM	SOMERSET	SUSSEX	UNION	WARREN
94 NOV	21.8	38.0	29.7	23.9	18.3	7.3	53.7	8.8	25.5	20.0	13.5	30.4	18.2	28.2	22.2	16.7	33.9	44.2	49.1	48.7	28.7	52.6
DEC	21.5	32.8	29.7	24.4	15.5	7.5	51.5	8.3	24.2	21.1	16.1	30.4	18.8	27.8	22.4	18.1	33.0	38.3	47.4	49.6	28.6	52.2
95 JAN	20.4	34.2	28.6	22.9	11.7	5.5	52.2	7.8	22.8	19.6	11.5	28.7	18.8	27.3	14.4	15.8	32.1	36.7	54.7	40.2	27.7	47.7
FEB	20.3	39.8	23.9	21.8	13.6	6.0	52.1	8.8	28.1	18.1	26.2	27.0	16.8	26.8	19.5	18.6	31.7	41.7	48.7	43.3	26.0	46.1
MAR	23.8	46.1	27.3	28.5	16.3	7.2	58.6	11.0	31.6	22.9	25.8	32.5	16.9	29.9	22.9	23.6	35.1	46.6	62.0	48.2	29.6	50.3
APR	24.5	46.3	26.9	29.2	15.7	7.9	64.1	13.0	28.7	23.8	26.1	31.9	16.3	29.6	31.9	26.4	33.9	50.0	61.3	45.3	28.9	47.2
MAY	25.7	44.0	28.3	28.6	12.9	10.9	64.0	15.7	26.4	25.4	30.6	33.1	17.4	29.1	42.0	25.0	37.7	48.4	68.0	41.7	31.4	48.7
JUN	23.3	37.7	26.5	27.1	11.3	9.0	53.8	16.0	20.7	23.8	23.5	28.7	15.1	27.2	52.9	22.3	33.6	26.7	48.1	26.1	28.6	51.5
JUL	22.5	31.9	27.0	26.9	9.8	6.3	55.3	15.8	21.5	20.8	26.6	27.3	19.2	27.7	71.0	22.1	34.7	26.3	46.1	19.0	26.3	38.9
AUG	22.6	33.9	24.8	27.7	9.5	6.5	54.6	16.2	22.0	21.2	25.2	26.7	22.0	24.5	71.7	25.4	32.0	29.4	40.3	27.7	25.2	37.8
SEP	25.2	46.4	24.2	27.6	15.1	11.7	56.9	17.7	19.5	23.8	34.3	27.8	23.6	26.2	70.7	28.6	34.5	45.3	57.3	48.4	28.4	32.0
OCT	27.9	54.6	25.5	31.5	17.1	11.4	65.9	20.2	25.3	26.0	42.7	30.1	27.5	27.8	64.4	28.9	37.0	51.7	59.3	57.5	31.4	41.7
NOV	27.2	52.2	23.1	32.5	16.8	11.5	60.2	19.7	24.1	25.4	45.8	27.4	29.3	25.6	63.3	28.6	37.6	52.4	55.8	67.2	29.0	41.3
DEC	26.4	50.3	24.5	31.5	14.8	13.9	60.6	18.1	24.4	25.0	35.9	28.0	30.6	23.9	72.6	28.9	36.2	43.9	53.2	56.7	28.8	40.3
96 JAN	23.7	42.5	24.3	27.1	12.0	14.1	55.1	15.2	19.7	22.2	26.7	25.3	34.0	23.6	74.1	24.8	32.1	36.3	51.3	35.8	25.2	43.8
FEB	23.5	44.9	22.2	27.9	13.3	13.9	52.6	15.3	20.5	21.5	38.0	22.3	31.5	25.1	85.9	22.6	30.4	43.9	49.4	62.9	25.5	46.3
MAR	27.8	57.3	24.5	36.2	16.2	19.4	61.5	18.7	25.1	23.5	35.2	26.9	34.6	32.8	91.4	27.6	38.8	60.2	60.6	69.6	31.3	45.9
APR	28.3	58.3	24.0	35.9	15.7	25.1	65.6	18.1	25.7	24.4	44.3	29.7	35.5	32.5	96.2	28.6	36.4	57.6	76.4	72.6	34.2	50.9
MAY	28.6	58.6	24.9	35.1	14.8	27.2	72.7	17.4	29.0	24.6	40.0	33.0	36.9	33.7	97.1	26.9	38.5	54.3	73.7	79.7	34.6	48.0
JUN	26.9	50.9	24.6	30.0	12.7	26.4	63.4	18.5	26.0	21.8	43.4	30.7	33.4	31.1	100.0	23.3	36.5	38.4	67.8	58.2	29.7	46.3
JUL	25.7	46.8	23.9	25.0	15.0	22.2	57.3	16.9	29.2	18.4	53.8	28.5	36.0	29.8	95.8	23.1	36.7	31.3	65.6	52.5	28.8	38.8
AUG	25.1	44.1	22.9	21.2	15.9	27.9	56.6	18.2	28.7	17.8	27.7	26.7	36.0	29.2	99.5	19.2	33.4	23.4	59.9	49.1	26.4	48.9
SEP	29.0	54.1	23.7	26.0	19.5	24.3	62.1	20.9	30.0	23.0	36.6	29.3	43.0	32.3	100.0	20.2	40.5	41.8	82.7	41.7	27.8	50.4
OCT	31.9	59.3	25.0	30.8	21.8	20.2	70.6	23.7	32.6	27.1	44.7	31.2	46.7	34.0	100.0	22.1	41.3	53.9	95.5	58.7	29.8	51.0
NOV	31.8	58.9	24.0	31.2	20.4	28.4	69.5	23.7	30.5	27.5	55.7	30.0	44.8	34.2	100.0	21.6	43.8	52.7	97.1	57.1	29.3	54.7

**GRAPH 8**  
**JOBS/FDP PARTICIPATION RATES (%)**



### GRAPH 8 (CONTINUED) JOBS/FDP PARTICIPATION RATES (%)



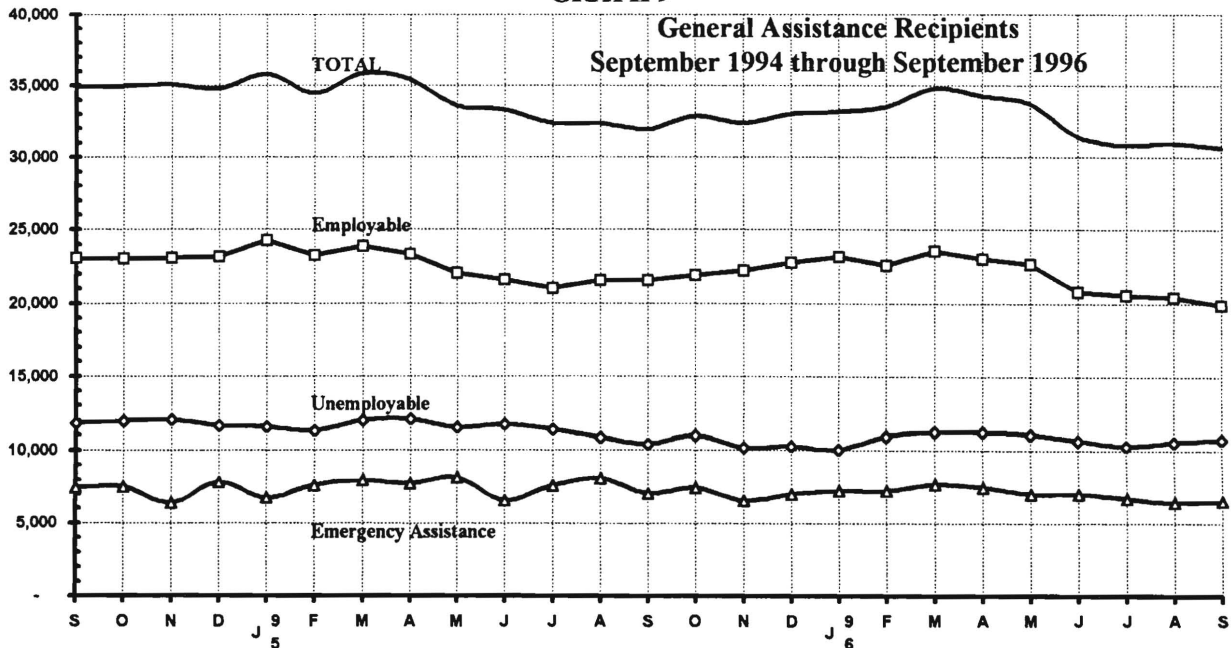
New Jersey Department of Human Services  
 Division of Family Development

**TABLE 9**  
**GENERAL ASSISTANCE Program, State Summary**  
**NUMBER OF EMPLOYABLE AND UNEMPLOYABLE RECIPIENTS**  
**AND EMERGENCY ASSISTANCE PAYMENTS DURING REPORT MONTH**  
 September 1994 through September 1996

	<u>All Persons Aided</u>			<u>Emergency Assistance Payments</u>		
	Employable	Unemployable	Total	Temporary Rental Assist	Other GA-EA	Total
1994 Sep	23,075	11,825	34,900	4,424	3,015	7,439
Oct	23,031	11,950	34,981	4,472	3,032	7,504
Nov	23,046	12,045	35,091	4,607	1,762	6,369
Dec	23,142	11,642	34,784	4,657	3,137	7,794
AVERAGE (12 months)	24,374	11,813	36,187	4,651	3,181	7,832
1995 Jan	24,262	11,537	35,799	4,408	2,343	6,751
Feb	23,219	11,264	34,483	4,851	2,748	7,599
Mar	23,855	11,976	35,831	5,036	2,909	7,945
Apr	23,337	12,082	35,419	4,833	2,887	7,720
May	22,046	11,527	33,573	4,995	3,135	8,130
Jun	21,575	11,738	33,313	4,423	2,146	6,569
Jul	21,000	11,391	32,391	4,048	3,526	7,574
Aug	21,526	10,829	32,355	4,174	3,909	8,083
Sep	21,525	10,389	31,914	4,110	2,945	7,055
Oct	21,913	10,959	32,872	3,939	3,497	7,436
Nov	22,206	10,171	32,377	4,141	2,422	6,563
Dec	22,732	10,268	33,000	4,086	2,902	6,988
AVERAGE	22,433	11,178	33,611	4,420	2,947	7,368
1996 Jan	23,140	10,054	33,194	4,421	2,803	7,224
Feb	22,584	10,927	33,511	4,567	2,651	7,218
Mar	23,528	11,243	34,771	4,472	3,185	7,657
Apr	23,028	11,221	34,249	4,490	2,944	7,434
May	22,657	11,054	33,711	4,064	2,947	7,011
Jun	20,785	10,667	31,452	4,283	2,716	6,999
Jul	20,546	10,282	30,828	3,754	2,922	6,676
Aug	20,416	10,552	30,968	3,958	2,448	6,406
Sep	19,895	10,741	30,636	3,905	2,597	6,502
AVERAGE	22,086	10,750	32,836	4,251	2,827	7,078

Data Sources: NJ Division of Family Development, GA Fiscal Unit

**GRAPH 9**



New Jersey Department of Human Services  
Division of Family Development

**TABLE 10**  
**CHILD SUPPORT AND PATERNITY COLLECTIONS**  
**State Summary**

\$1000's

COLLECTION SOURCE	Federal Fiscal Years			Percent Change	
	1994	1995	1996	1994-1995	1995-1996
<b>AFDC &amp; FOSTER CARE</b>					
Federal Tax	\$15,170.0	\$16,106.4	\$19,253.9	6.2%	19.5%
State Tax	2,169.8	1,738.0	2,037.3	-19.9%	17.2%
Unempl. Ins. Ben.	4,081.0	4,342.6	5,647.5	6.4%	30.1%
Income Withholding	43,696.4	45,758.7	41,036.1	4.7%	-10.3%
Other/Own Behalf	17,729.3	18,258.4	15,389.8	3.0%	-15.7%
From Other States	3,303.5	3,401.5	3,370.7	3.0%	-0.9%
For Other States	5,612.7	7,009.9	7,787.0	24.9%	11.1%
<b>TOTAL COLLECTION</b>	<b>\$91,762.6</b>	<b>\$96,615.6</b>	<b>\$94,522.3</b>	<b>5.3%</b>	<b>-2.2%</b>
<b>NON- AFDC</b>					
Federal Tax	\$6,288.4	\$7,011.0	\$9,330.9	11.5%	33.1%
State Tax	2,434.1	2,086.7	2,428.5	-14.3%	16.4%
Unempl. Ins. Ben.	13,514.8	14,415.7	20,116.9	6.7%	39.6%
Income Withholding	227,505.1	260,768.1	253,066.8	14.6%	-3.0%
Other/Own Behalf	151,072.8	157,100.0	127,874.0	4.0%	-18.6%
From Other States	19,761.5	20,951.4	20,988.8	6.0%	0.2%
For Other States	21,906.2	27,714.1	28,705.8	26.5%	3.6%
<b>TOTAL COLLECTION</b>	<b>\$442,482.9</b>	<b>\$490,050.0</b>	<b>\$462,511.6</b>	<b>10.7%</b>	<b>-5.6%</b>
<b>TOTAL</b>					
Federal Tax	\$21,458.3	\$23,117.4	\$28,584.8	7.7%	23.7%
State Tax	4,603.9	3,824.8	4,465.7	-16.9%	16.8%
Unempl. Ins. Ben.	17,595.8	18,758.4	25,764.4	6.6%	37.3%
Income Withholding	271,201.4	306,526.8	294,102.9	13.0%	-4.1%
Other/Own Behalf	168,802.1	175,358.4	143,263.9	3.9%	-18.3%
From Other States	23,065.0	24,352.9	24,359.4	5.6%	0.0%
For Other States	27,518.9	34,724.0	36,492.8	26.2%	5.1%
<b>TOTAL COLLECTION</b>	<b>\$534,245.5</b>	<b>\$586,662.6</b>	<b>\$557,033.9</b>	<b>9.8%</b>	<b>-5.1%</b>
<b>TOTAL DISTRIBUTION</b>	<b>\$472,700</b>	<b>\$515,000</b>	<b>\$536,600</b>	<b>8.9%</b>	<b>4.2%</b>

## Explanatory Notes

The Department of Human Services Division of Family Development provides basic income and an opportunity to achieve self-sufficiency for individuals and families served by the Division's programs. The Division provides leadership, direction and supervision to those public agencies responsible for administering those programs and plans for and develops policies to promote self-sufficiency.

**AID TO FAMILIES WITH DEPENDENT CHILDREN (AFDC)** - Financial assistance for dependent children and their natural or adoptive parents, or certain other relatives recognized as taking the place of a parent.

**Regular AFDC (C Segment)** - assistance when only one parent is in the home due to death or absence, or both parents are in the home but at least one is incapacitated.

**Unemployed Parents (F Segment)** - assistance when both parents are in the home, neither is incapacitated and the primary wage earner meets the federally defined criteria for unemployment.

**State AFDC (N Segment)** - assistance when both parents are in the home, neither is incapacitated, and the primary wage earner does not meet the federal definition of unemployment.

**Medicaid Only** - families no longer receiving AFDC financial assistance but remaining eligible for Medicaid under applicable provisions which extend coverage beyond period of AFDC assistance.

**FOOD STAMP PROGRAM (FS)** - Authorized by Congress as a nutritional supplement program to provide low income households with more food of greater variety and better nutrition. Program eligibility is based on household income, resources, and expenses for medical, shelter, and dependent care. CWA staff refer certain recipients to the New Jersey Department of Labor for participation in the Food Stamp Employment and Training Program.

**EMERGENCY ASSISTANCE (EA)** - Payments to those eligible for AFDC, Supplemental Security Income or General Assistance, authorized during the 30 consecutive days immediately following the emergency (defined as a substantial loss of shelter, food, clothing, or household furnishings by fire, flood or other similar disaster) or if the eligible individual or family is in an imminent or actual state of homelessness.

## **JOBS/FDP**

**JOB OPPORTUNITY AND BASIC SKILLS PROGRAM (JOBS)** - Federally mandated work/training program for recipients of AFDC established by the Family Support Act of 1988 under Part F of Title IV of the Social Security Act.

**FAMILY DEVELOPMENT PROGRAM (FDP)** - Reform legislation enacted by the State Legislature in January 1992 to: build, strengthen, and support the family unit; encourage family formation; reduce the long-term aspects of welfare dependency; look to the needs of the family unit as a whole; emphasize education and training for all family members; maximize use of educational, training and employment resources; and develop genuine private sector job opportunities.

**SNAPSHOT OF ACTIVITY AT POINT IN TIME** - Status of activities as of the end of the month:

**Total Non-Exempt JOBS/FDP Recipients** - Calculation of the number of mandatory IV-F individuals (FAMIS report # FB304).

**Employment Directed Activities (EDA)** - From Activities Summary Report (OMEGA report # RM064). Unduplicated count of persons participating in **Training, Education, or Job Search**.

**Participants in EDA, Receiving Support Services** - From Issuance Disbursement Summary (OMEGA report # RM703). Total number of active participants who show receipt of **Training Related Expenses** or **Child Care**.

**Participation Rate (JOBS/FDP)** - Federally mandated calculation method, dividing the number of participants whose combined and averaged weekly hours of participation in qualifying activities equals or exceeds 20 hours per week by the total number of non-exempt IV-F recipients. As of the end of the month.

**ACTIVITY FOR THE MONTH** - Number of participants with the indicated activity during the month:

**Participants with First Case Management Interview** - From Activities Summary Report (OMEGA report # RM064).

**Number of Persons Employed This Month, Still Receiving AFDC** - From Activities Summary Report (OMEGA report # RM064).

**Number of Persons Closed on FAMIS Due to Earnings** - From FAMIS report # FM463.

**Post AFDC and Receiving Child Care** - Persons no longer in receipt of AFDC, but still receiving child care. From Issuance Disbursement Summary (OMEGA report # RM703).

New Jersey Department of Human Services  
Division of Family Development

**TABLE 11**  
**GENERAL ASSISTANCE Program**  
**EMPLOYABLE AND UNEMPLOYABLE RECIPIENTS**  
**AND EMERGENCY ASSISTANCE PAYMENTS,**  
**COUNTIES AND 21 LARGEST MUNICIPALITIES**  
**September 1996**

County/Municipality	Total Persons Aided			Emergency Assistance Payments		
	Employable	Unemployable	Total	Temporary Rental Assist.	Other GA-EA	Total
ATLANTIC	781	546	1,327	70	13	83
BERGEN	447	404	851	215	70	285
BURLINGTON	345	359	704	142	108	250
CAMDEN	1,776	1,231	3,007	217	191	408
CAPE MAY	64	75	139	9	2	11
CUMBERLAND	279	168	447	9	5	14
ESSEX	7,548	2,277	9,825	778	1,386	2,164
GLOUCESTER	119	156	275	14	9	23
HUDSON	956	1,217	2,173	156	22	178
HUNTERDON	46	62	108	19	15	34
MERCER	1,687	762	2,449	336	196	532
MIDDLESEX	442	522	964	78	39	117
MONMOUTH	546	612	1,158	235	125	360
MORRIS	98	190	288	41	13	54
OCEAN	558	375	933	342	160	502
PASSAIC	2,244	705	2,949	489	138	627
SALEM	109	56	165	9	19	28
SOMERSET	92	89	181	35	14	49
SUSSEX	31	40	71	22	5	27
UNION	1,687	847	2,534	673	60	733
WARREN	40	48	88	16	7	23
<b>TOTAL NJ</b>	<b>19,895</b>	<b>10,741</b>	<b>30,636</b>	<b>3,905</b>	<b>2,597</b>	<b>6,502</b>
Atlantic City	649	311	960	54	7	61
Mount Holly	110	82	192	47	70	117
Camden	1,545	918	2,463	140	133	273
Vineland	143	92	235	6	4	10
East Orange	450	377	827	217	54	271
Irvington	280	100	380	42	11	53
Montclair	133	68	201	31	15	46
Newark	6,244	1,516	7,760	424	1,294	1,718
Orange	329	69	398	42	4	46
Bayonne	124	59	183	6	0	6
Hoboken	142	91	233	17	0	17
Jersey City	519	510	1,029	76	5	81
Trenton	1,587	657	2,244	299	186	485
Perth Amboy	110	98	208	10	13	23
Asbury Park	158	103	261	74	4	78
Long Branch	142	115	257	51	75	126
Lakewood	296	114	410	189	34	223
Passaic	610	286	896	231	32	263
Paterson	1,547	288	1,835	202	89	291
Elizabeth	1,100	433	1,533	506	19	525
Plainfield	251	153	404	37	1	38
<b>Total</b>	<b>16,469</b>	<b>6,440</b>	<b>22,909</b>	<b>2,701</b>	<b>2,050</b>	<b>4,751</b>

Source: NJ Division of Family Development, GA Fiscal Unit