



State of New Jersey

2012-13

03-3700-050

OVERVIEW

BERGEN

NORTHERN HIGHLANDS REG

GRADE SPAN 09-12

NORTHERN HIGHLANDS REGIONAL HIGH SCHOOL

298 HILLSIDE AVE

ALLENDALE, NEW JERSEY 07401

This school's academic performance **is very high when compared** to schools across the state. Additionally, its academic performance **is very high when compared** to its peers. This school's college and career readiness **is very high when compared** to schools across the state. Additionally, its college and career readiness **is high when compared** to its peers. This school's graduation and post-secondary performance **is very high when compared** to schools across the state. Additionally, its graduation and post-secondary readiness **is very high when compared** to its peers.

Performance Areas	Peer Percentile	Statewide Percentile	Percent of Targets Met
Academic Achievement	86	89	88%
College & Career Readiness	66	84	60%
Graduation and Post-Secondary	99	97	100%

Improvement Status

N/A

Rationale

N/A

Very High Performance is defined as being **equal to or above the 80th percentile**.

High Performance is defined as being **between the 60th and 79.9th percentiles**.

Average Performance is defined as being **between the 40th and 59.9th percentiles**.

Lagging Performance is defined as being **between the 20th and 39.9th percentiles**.

Significantly Lagging Performance is defined as being **equal to or below the 19.9th percentile**.

Peer Schools are schools that have similar grade levels and students with similar demographic characteristics, such as the percentage of students qualifying for Free/Reduced Lunch, Limited English Proficiency programs or Special Education programs.

Academic Achievement

This school outperforms **89%** of schools statewide as noted by its statewide percentile and **86%** of schools educating students with similar demographic characteristics as noted in its peer school percentile in the performance area of Academic Achievement. Additionally, this school is meeting **88%** of its performance targets in the area of Academic Achievement.



Academic Achievement measures the content knowledge students have in language arts literacy and math. For high schools, this includes measures of the school's proficiency rate on both the Language Arts Literacy and Math sections of the New Jersey High School Proficiency Assessment (HSPA). A proficiency rate is calculated by summing the count of students who scored either proficient or advanced proficient on the assessment and dividing by the count of valid test scores.

College and Career Readiness

This school outperforms **84%** of schools statewide as noted by its statewide percentile and **66%** of schools educating students with similar demographic characteristics as noted in its peer school percentile in the performance area of College and Career Readiness. Additionally, this school is meeting **60%** of its performance targets in the area of College and Career Readiness.



College and Career Readiness measures the degree to which students are demonstrating behaviors that are indicative of future attendance and/or success in college and careers. For high schools, this includes measures of participation in college readiness tests such as the SAT, ACT or PSAT and in rigorous coursework as defined by participation in AP or IB courses in English, math, social studies and science.

Graduation and Post-Secondary

This school outperforms **97%** of schools statewide as noted by its statewide percentile and **99%** of schools educating students with similar demographic characteristics as noted in its peer school percentile in the performance area of Graduation and Post-Secondary. Additionally, this school is meeting **100%** of its performance targets in the area of Graduation and Post-Secondary.



Graduation and Postsecondary measures the rate at which students who begin high school four years earlier graduate within four years. Also included is a measure of the rate at which students in a particular school drop out of school.

State of New Jersey

2012-13

03-3700-050

NORTHERN HIGHLANDS REGIONAL HIGH SCHOOL
298 HILLSIDE AVE
ALLENDALE, NEW JERSEY 07401

DEMOGRAPHIC INFORMATION

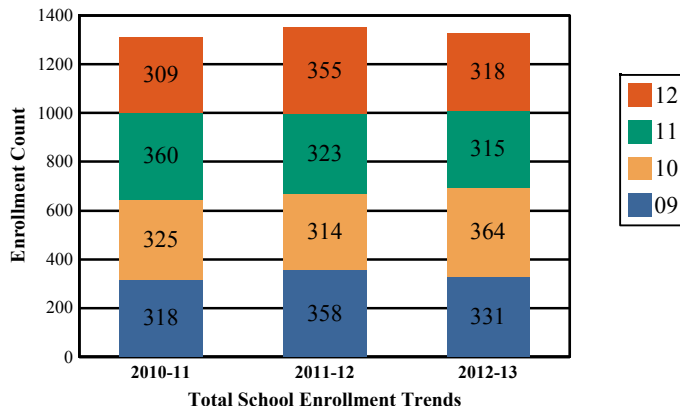
BERGEN

NORTHERN HIGHLANDS REG

GRADE SPAN 09-12

Enrollment by Grade, in Full Time Equivalent

This graph presents the count of students who were 'on roll' by grade in October of each school year.



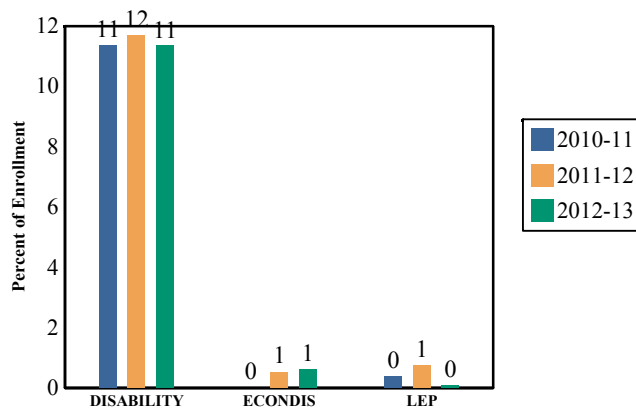
Total School Enrollment Trends

Note: "UG" represents the count of students who are 'on roll' in this school but who are educated in ungraded classrooms, meaning that the classrooms may contain students from multiple grade levels.

Total School Enrollment in Full Time Equivalent

2011-12	1,350
2012-13	1,327

Enrollment Trends by Program Participation



Current Year Enrollment by Program Participation

2012-2013	Count of Students	Percentage of Enrollment
Students with Disability	151	11%
Economically Disadvantaged Students	8	0.6%
Limited English Proficient Students	1	0.1%

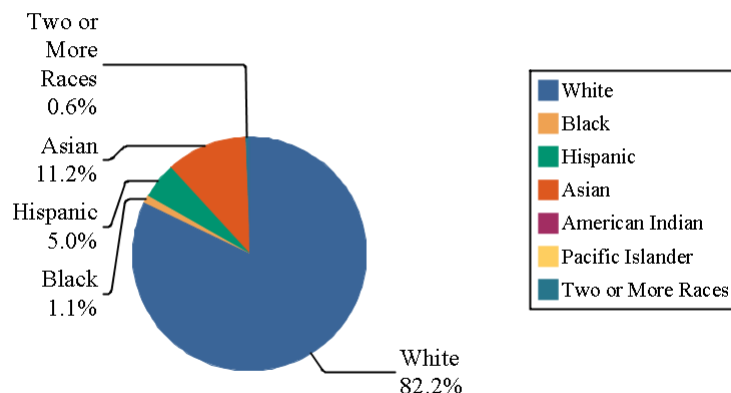
Language Diversity

This table presents the percentage of students who primarily speak each language in their home.

2012-13	Percent
English	93.8%
Korean	1.5%
Spanish	1.0%
Chinese	0.5%
Japanese	0.3%
Hindi	0.3%
Other	2.6%

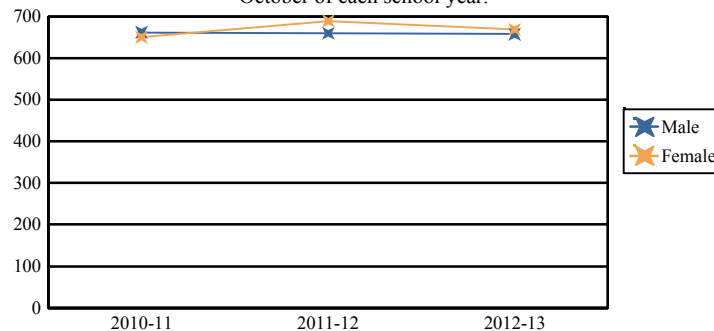
Enrollment by Ethnic/Racial Subgroup

This graph presents the percentages of enrollment for each subgroup defined by the No Child Left Behind Act of 2001



Enrollment by Gender

This graph presents the count of students by gender who were 'on roll' (FTE) in October of each school year.



	Male	Female
2010-11	662	650
2011-12	660	690
2012-13	658	669

State of New Jersey

2012-13

03-3700-050

ACADEMIC ACHIEVEMENT

BERGEN

NORTHERN HIGHLANDS REG

GRADE SPAN 09-12

NORTHERN HIGHLANDS REGIONAL HIGH SCHOOL

298 HILLSIDE AVE

ALLENDALE, NEW JERSEY 07401

Academic Achievement measures the content knowledge students have in Language Arts Literacy and Math. In high schools, this includes the outcomes of the New Jersey High School Proficiency Assessment (HSPA). The first column - Schoolwide Performance - in the table below includes measures of the total schoolwide proficiency rate in both Language Arts Literacy and Math across multiple administrations of the assessment. The second column - Peer School Percentile - indicates where the school's proficiency rate compares to its group of peer schools. For example, a school that has a peer school percentile of 65 has a proficiency rate that is higher than 65% of its peer schools. The third column - Statewide Percentile - indicates where the school's proficiency rate compares to schools across the state. For example, a school that has a statewide percentile of 30 has a proficiency rate that is higher than 30% of all schools with HSPA scores statewide. The last column - Percent of Targets Met - presents the percentage of progress targets met as defined by the NJDOE's NCLB waiver.

The Summary row presents the averages of the peer school percentiles, the average of statewide percentiles and the percentage of statewide targets met.

Academic Achievement Indicators	Schoolwide Performance	Peer Percentile	State Percentile	Percent of Targets Met
HSPA Language Arts Proficiency and above	99%	87	89	100%
HSPA Math Proficiency and above	97%	84	88	75%
SUMMARY - Academic Achievement		86	89	88%

NCLB Progress Targets - Language Arts Literacy

This table presents the Progress Targets as uniquely calculated for each subgroup in each school under NJDOE's NCLB waiver. The methodology - as defined by the United States Department of Education - is calculated so that each subgroup will halve the gap between their 2011 proficiency rate and 100% proficiency by 2017.

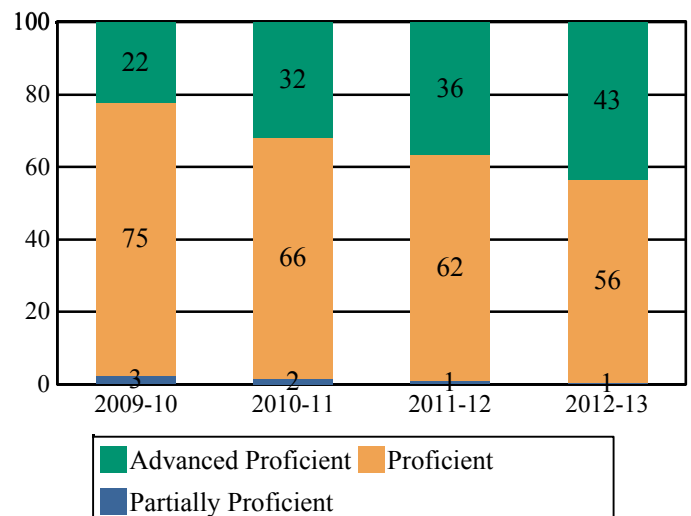
Subgroups	Total Valid Scores	Pass Rate	Target	Met Target?
Schoolwide	320	99.3	90	YES
White	251	99.6	90	YES
Black	-	-		--
Hispanic	-	-		--
American Indian	-	-		--
Asian	33	97	90	YES
Two or More Races	-	-		--
Students with Disability	38	94.8	89.9	YES
Limited English Proficient Students	-	-		--
Economically Disadvantaged Students	-	-		--

YES* = Met Progress Target (Confidence Interval Applied)

Data is presented for subgroups when the count is high enough under NCLB suppression rules.

Proficiency Trends - Language Arts Literacy

This graph presents the percentage of students who scored in the Advanced Proficient, Proficient and Partially Proficient categories of the statewide Language Arts Literacy assessment over the prior four years.



ACADEMIC ACHIEVEMENT

BERGEN

NORTHERN HIGHLANDS REG

GRADE SPAN 09-12

NORTHERN HIGHLANDS REGIONAL HIGH SCHOOL

298 HILLSIDE AVE

ALLENTALE, NEW JERSEY 07401

NCLB Progress Targets - Math

This table presents the Progress Targets as uniquely calculated for each subgroup in each school under NJDOE's NCLB waiver. The methodology - as defined by the United States Department of Education - is calculated so that each subgroup will halve the gap between their 2011 proficiency rate and 100% proficiency by 2017.

Subgroups	Total Valid Scores	Pass Rate	Target	Met Target?
Schoolwide	320	96.6	90	YES
White	251	96.8	90	YES
Black	-	-		--
Hispanic	-	-		--
American Indian	-	-		--
Asian	33	97	90	YES
Two or More Races	-	-		--
Students with Disability	38	73.7	90	NO
Limited English Proficient Students	-	-		--
Economically Disadvantaged Students	-	-		--

YES* = Met Progress Target(Confidence Interval Applied)

Data is presented for subgroups when the count is high enough under NCLB suppression rules.

Proficiency Outcomes - Biology

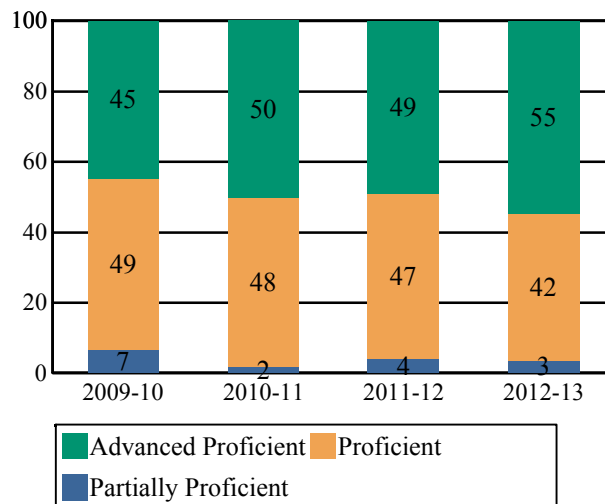
This table presents the percentage of students who scored in the Advanced Proficient, Proficient and Partially Proficient categories of the New Jersey Biology Competency Test (NJBCT) in the latest school year.

Subgroups	Advanced	Proficient	Partially Proficient
Schoolwide	45%	41%	15%
White	43%	41%	16%
Black	-	-	-
Hispanic	-	-	-
American Indian	-	-	-
Asian	59%	32%	9%
Two or More Races	-	-	-
Students with Disability	9%	44%	47%
Limited English Proficient Students	-	-	-
Economically Disadvantaged Students	-	-	-

Data is presented for subgroups when the count is high enough under NCLB suppression rules.

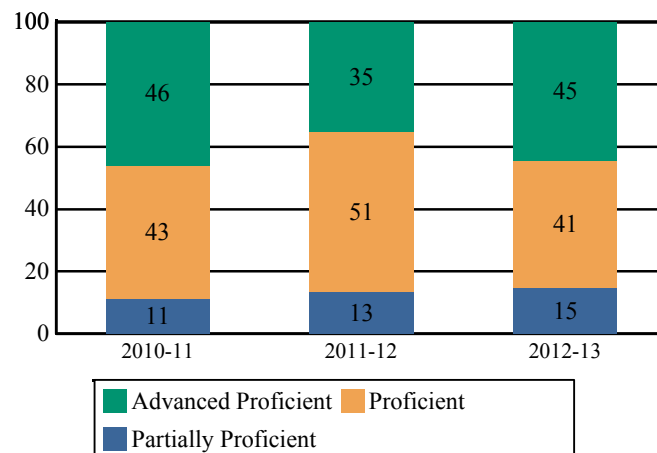
Proficiency Trends - Math

This graph presents the percentage of students who scored in the Advanced Proficient, Proficient and Partially Proficient categories of the statewide Math assessment over the prior four years.



Proficiency Trends - Biology

This graph presents the percentage of students who scored in the Advanced Proficient, Proficient, and Partially Proficient categories of the Biology Competency Test over the last two years.



State of New Jersey

2012-13

03-3700-050

COLLEGE AND CAREER READINESS

BERGEN

NORTHERN HIGHLANDS REGIONAL HIGH SCHOOL

298 HILLSIDE AVE

NORTHERN HIGHLANDS REG

GRADE SPAN 09-12

ALLENDALE, NEW JERSEY 07401

Students in high schools begin to demonstrate college readiness behaviors long before they actually graduate from high school. Among those behaviors are taking college entrance exams and challenging themselves with rigorous course work. The table below presents five such indicators: the percentage of students enrolled in the 12th grade who took the SAT or ACT, the percentage of 10th and 11th graders who took the PSAT, the percentage of students who scored above the SAT benchmark of 1550, the percentage of 11th and 12th graders who took at least one AP or IB test in English, math, social studies or science, and the percentage of those AP or IB tests that were scored a 3 or higher.

The first column - Schoolwide Performance - represents the outcomes for these particular indicators in the school. The second column - Peer School Percentile - indicates how the school's performance compares to its group of peer schools. For example, a school whose peer school percentile is 65 in SAT participation has a higher SAT Participation than 65% of its peer group. The third column - Statewide Percentile - indicates how the school's performance compares to schools across the state. The fourth column - Statewide Target - provides the statewide targets for each of these indicators. The last column - Met Target? - indicates whether the School Performance met or exceeded the statewide target.

The Summary row presents the averages of the peer school percentiles, the average of statewide percentiles and the percentage of statewide targets met.

College and Career Readiness Indicators	Schoolwide Performance	Peer Percentile	Statewide Percentile	Statewide Target	Met Target?
Percent of Students Participating in SAT or ACT	100%	100	100	80%	YES
Percent of Students Participating in PSAT	58%	26	58	60%	NO
Percent of Students Scoring Above 1550 on SAT	77%	100	94	40%	YES
Percent of Students Taking at least one AP Test or IB Test in English, Math, Social Studies or Science	32%	45	81	35%	NO
Percent of AP Tests ≥ 3 or IB Test ≥ 4 in English, Math, Social Studies or Science	90%	61	85	75%	YES
Summary		66	84		60%

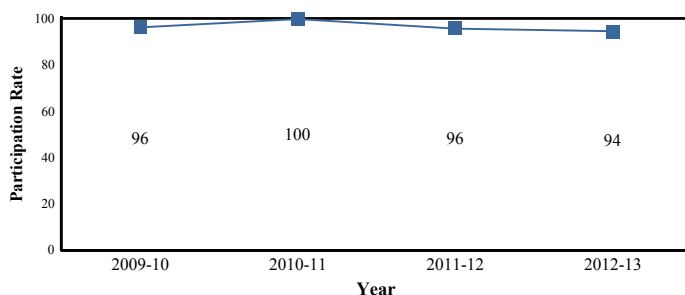
College Readiness Test Participation

The first column of the table below presents the percentage of students enrolled in the 12th grade who took the SAT or ACT and the percentage of students enrolled in 10th and 11th grade who took the PSAT. The second column provides the average across the school's peer group for these two metrics.

2012-13 Percent of Students	School	Peer Avg.	State Avg.
Participating in SAT	94.5%	89.2%	75.3%
Participating in ACT	49.4%		20.6%
Participating in PSAT	57.9%	70.7%	52.5%

Participation Trends - SAT Testing

This graph presents the participation rate in the SAT over the last four years.



AP/IB Participation - 'Unique' Students

The table below presents the proportion of 'unique' students enrolled in at least 11th and 12th grade i.e., each student is counted once regardless of how many AP or IB courses he/she may take. The table also presents the proportion of how many 'unique' students took at least one AP or IB test to the school's enrollment in 11th and 12th grade.

2012-13 Percent of Students Taking	School	Peer Avg.	State Avg.
One or More Course	62.3%	51.6%	32.8%
One or More Test	53.1%	43.8%	26.8%
At least one AP or IB Test in English, Math, Social Studies or Science	31.8%	32.9%	18.9%

Note: Students who are enrolled in AP/IB coursework or take AP/IB tests in grades other than 11th and 12th are included in the numerator of this calculation.

AP /IB Test Results

This table presents the percentage of all AP/IB tests taken by students enrolled in the school that were scored AP ≥ 3 and scored IB ≥ 4 .

2012-13	School	Peer Avg.	State Avg.
Percent of AP Tests ≥ 3 or IB Test ≥ 4	95.8%	85.0%	74.6%
Percent of Scores in AP ≥ 3 or IB ≥ 4 in English, Math, Social Studies or Science	90.1%	86.7%	75.1%

COLLEGE AND CAREER READINESS

BERGEN

NORTHERN HIGHLANDS REG

GRADE SPAN 09-12

NORTHERN HIGHLANDS REGIONAL HIGH SCHOOL

298 HILLSIDE AVE

ALLENDALE, NEW JERSEY 07401

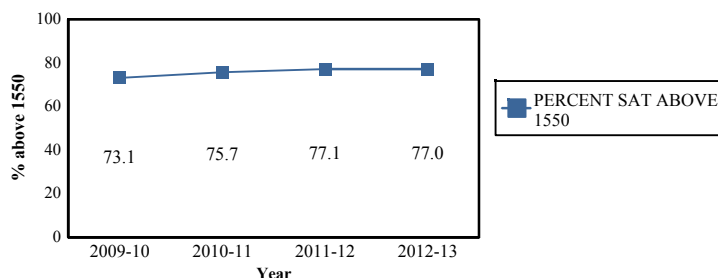
Scholastic Assessment Test (SAT) Results

This table presents the percentage of students who achieved a composite SAT score of 1550 or higher. The SAT benchmark score of 1550 (Critical Reading, Mathematics and Writing Score combined) indicates a 65 percent likelihood of achieving a B- average or higher during the first year of college, which in turn has been found by the College Board's research to be indicative of a high likelihood of college success and completion.

2012-13	School	Peer Avg.	State Avg.
Percent of Students Scoring Above 1550 on SAT	77.0%	64.5%	43.9%

SAT Benchmark Trends

This chart presents the percentage of students who achieved a composite SAT score of 1550 or higher over the past four years.



Composite SAT Score

This chart presents the average composite SAT score from the last academic year for students enrolled in this school as well as the average scores achieved in Critical Reading, Mathematics and Writing. The averages from this school's peer group are also presented.

2012-13	School	Peer Avg.	State Avg.
Composite SAT Score	1,723	1,669	1,512
Critical Reading	561	546	495
Mathematics	590	570	521
Writing	572	553	496

This chart presents the scores achieved in Critical Reading, Mathematics and Writing by the students at the 25th percentile, the 50th percentile and the 75th percentile of the school's distribution of SAT scores.

2012-13	Critical Reading	Mathematics	Writing
75th Percentile	620	660	640
50th Percentile	565	590	570
25th Percentile	508	530	510

AP/IB Courses Offered

This table presents the count of students enrolled in each AP/IB course offered in this school in the first column. The second column presents the count of tests taken in each AP/IB course. The numbers may not match as some students do not take the test in the same year as they take the course and some students may take the course without taking the test or vice versa.

AP/IB Course Name	Students Enrolled	Students Tested
AP U.S. Government and Politics	99	79
AP Psychology	96	89
AP Statistics	76	64
AP Economics	67	56
AP U.S. History	60	50
AP European History	40	33
AP Calculus AB	39	28
AP Art—History of Art	38	26
AP Biology	35	20
AP English Language and Composition	30	19
AP Studio Art -- 2D Design	29	15
AP World History	24	17
AP Chemistry	24	23
AP Environmental Science	23	22
AP French Language	18	3
AP Physics B	18	6
AP Spanish Language	17	10
AP Calculus BC	16	15
AP Music Theory	7	2



State of New Jersey

2012-13

03-3700-050

COLLEGE AND CAREER READINESS

BERGEN

NORTHERN HIGHLANDS REG

GRADE SPAN 09-12

NORTHERN HIGHLANDS REGIONAL HIGH SCHOOL

298 HILLSIDE AVE

ALLENDALE, NEW JERSEY 07401

Visual and Performing Arts

The chart below contains the percentage of students who were enrolled in at least one Dance, Drama/Theater, Music or Visual Arts class in this school. The last row shows the percentage of students who were enrolled in any Visual and Performing Arts classes in the school.

Percent of Students Enrolled	School	State
Dance	N/R	1.8%
Drama/Theater	3.2%	3.5%
Music	16.7%	16.7%
Visual Arts	27.5%	30.2%
Total: All Visual and Performing Arts	45.6%	47.3%

N/R - Data Not Reported



State of New Jersey

2012-13

03-3700-050

GRADUATION AND POSTSECONDARY

BERGEN

NORTHERN HIGHLANDS REGIONAL HIGH SCHOOL

298 HILLSIDE AVE

NORTHERN HIGHLANDS REG

GRADE SPAN 09-12

ALLENDALE, NEW JERSEY 07401

This section of the performance report presents data about graduation, dropout and post-secondary attendance. The graduation rate is calculated according to the NCLB Cohort methodology as required by the United States Department of Education. Dropout rates are calculated from student-level data submitted by districts for students officially classified as dropouts. The dropout rate is the count of students who dropout in an academic year divided by the school's total enrollment.

The first column - Schoolwide Performance - represents the outcomes for these particular indicators in this school. The second column - Peer School Percentile - indicates how the school's performance compares to its group of peer schools. For example, a school whose peer percentile is 65 in Graduation Rate has a higher Graduation Rate than 65% of its peer group. The third column - Statewide Percentile - indicates how the school's performance compares to schools across the state. The fourth column - Statewide Target - provides the statewide targets for each of these indicators. The Statewide Target for Graduation Rate was established pursuant to NJDOE's NCLB Accountability Workbook. The last column - Met Target - indicates whether the School Performance met or exceeded the statewide target.

The Summary row presents the averages of the peer school percentile, the average of statewide percentile and the percentage of statewide targets met.

Graduation & Post Secondary Indicators	Schoolwide Performance	Peer Percentile	Statewide Percentile	Statewide Targets	Met Target
Overall Graduation Rate	99%	97	94	75%	YES
Dropout Rate	0.0%	100	100	2%	YES
SUMMARY - Graduation & Post-Secondary		99	97		100%

Graduation Rate by Subgroup

This table presents for all NCLB-identified subgroups the "4-year Adjusted Graduation Rate." This rate calculates the percentage of students who are awarded a regular, high school diploma within four years of becoming a first-time ninth grader. The rate is adjusted to account for students who 'transfer-in' and for students who are verified as 'transfers-out'.

	School	State Target
Schoolwide	99%	75%
White	99%	
Black	-	
Hispanic	-	
American Indian	-	
Asian	100%	
Native Hawaiian	-	
Two or More Races	-	
Students with Disability	94%	
Limited English Proficient Students	-	
Economically Disadvantaged Students	-	

Dropout Rate by Subgroup

This table presents for all NCLB-identified subgroups the Dropout rate. This rate calculates the percentage of students who are classified as dropouts divided by the school's total enrollment and by each subgroup enrollment.

	School	State Target
Schoolwide	0%	2%
White	0%	
Black	-	
Hispanic	0%	
American Indian	-	
Asian	0%	
Native Hawaiian	-	
Two or More Races	-	
Students with Disability	0%	
Limited English Proficient Students	-	
Economically Disadvantaged Students	-	

State of New Jersey

2012-13

03-3700-050

GRADUATION AND POSTSECONDARY

BERGEN

NORTHERN HIGHLANDS REG

GRADE SPAN 09-12

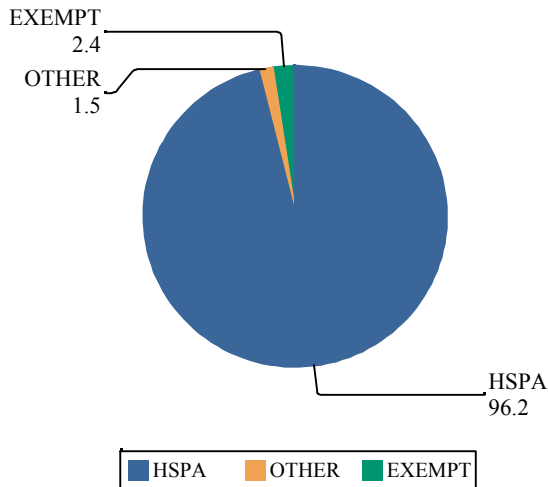
NORTHERN HIGHLANDS REGIONAL HIGH SCHOOL

298 HILLSIDE AVE

ALLENDALE, NEW JERSEY 07401

Graduation Pathway Rates

This chart presents the percentage of high school graduates who graduated by passing both sections of the HSPA, who were exempt from passing the HSPA, or who demonstrated proficiency through an alternative pathway such as through the Alternative High School Assessment, achievement of the 'Just Proficient Mean' or an appeal process.



Extended Year Graduation Rate

The chart below presents the 4-year and 5-year graduation rate for the prior school year's cohort in addition to the 4-year graduation rate for last year's cohort.

Class of	4-year Rate	5-year Rate
2011	97%	97%
2012	99%	99%
2013	99%	

Postsecondary Enrollment Rates

This chart presents the enrollment rates of this school's high school graduates, 16-months after high school graduation. The data is from the National Student Clearinghouse which reports that it collects student-level enrollment data from 95% of Institutions of Higher Education nationwide.

The last columns indicate, for the schoolwide total and each subgroup, the percentage of postsecondary enrollees that were enrolled in either a 2 year or a 4 year institution.

	Percent Enrolled	Percent in 2 Year	Percent in 4 Year
Schoolwide	88%	5.8%	94.2%
White	89.1%	5.9%	94.1%
Black	-	-	-
Hispanic	-	-	-
Asian	77.4%	0%	100%
American Indian	-	-	-
Native Hawaiian	-	-	-
Two or More Races	-	-	-
Students with Disability	89.7%	17.1%	82.9%
Limited English Proficient Students	-	-	-
Economically Disadvantaged Students	-	-	-



State of New Jersey

2012-13

03-3700-050

WITHIN SCHOOL ACHIEVEMENT GAP

BERGEN

NORTHERN HIGHLANDS REG

GRADE SPAN 09-12

NORTHERN HIGHLANDS REGIONAL HIGH SCHOOL

298 HILLSIDE AVE

ALLENDALE, NEW JERSEY 07401

This section of the performance report presents data about the achievement gap that exists within a school - as measured by the difference between the students' scale scores at the 25th and 75th percentile in the school, the so-called Interquartile Range (IQR). Taken together with an understanding of the overall and average achievement levels in the school, the IQR furthers an understanding of the range of student outcomes that exist in a school. A school gap smaller than the state gap indicates that the school's range of student outcomes is narrower than the state's while a school gap larger than the state gap indicates that the school's range of student outcomes is larger than the state's.

High School

HSPA Language Arts 25th %ile vs 75th%ile

This table presents the scale scores associated with students at the bottom (0th percentile), the 25th percentile, the 50th percentile, the 75th percentile and the top (99th percentile) of school's distribution.

Percentile	School Scaled Score	State Scaled Score
99th	274	291
75th	255	247
50th	247	237
25th	237	222
0th	110	100

Scaled Score Gap - School	Scaled Score Gap - State
------------------------------	-----------------------------

25th vs 75th Gap	18	25
------------------	----	----

Grade Level - 11

HSPA Math 25th %ile vs 75th%ile

This table presents the scale scores associated with students at the bottom (0th percentile), the 25th percentile, the 50th percentile, the 75th percentile and the top (99th percentile) of school's distribution.

Percentile	School Scaled Score	State Scaled Score
99th	273	300
75th	261	251
50th	251	231
25th	236	209
0th	162	136

Scaled Score Gap - School	Scaled Score Gap - State
------------------------------	-----------------------------

25th vs 75th Gap	25	42
------------------	----	----



State of New Jersey

2012-13

03-3700-050

SCHOOL CLIMATE

BERGEN

NORTHERN HIGHLANDS REG

GRADE SPAN 09-12

NORTHERN HIGHLANDS REGIONAL HIGH SCHOOL

298 HILLSIDE AVE

ALLENTALE, NEW JERSEY 07401

Length of School Day

This table presents the amount of time a school is in session for a typical student on a normal school day.

	School
2012-13	6 Hrs. 51 Mins.

Student Suspension Rate

This table presents the percentage of students who were suspended one or more times during the school year.

	School
2012-13	1.7%

Instructional Time

This table presents the amount of time that a typical student is engaged in instructional activities under the supervision of a certified teacher.

2012-13	School
Full Time	5 Hrs. 47 Mins.
Shared Time	3 Hrs. 58 Mins.

Student Expulsions

This table presents the number of students who were expelled from the school and district during the school year.

	School
2012-13	0

Student to Staff Ratio

This table presents the count of students per faculty member or administrator in the school. All staff are counted in full-time equivalents.

2012-13	School
Faculty	9
Administrators	265

SCHOOL PEER GROUP**Northern Highlands Regional High School****03-3700-050**

This table presents the list of peer schools in alphabetical order by county name that was created specifically for this school (highlighted in yellow). Peer schools are drawn from across the state and represent schools that have similar grade configurations and that are educating students of similar demographic characteristics, as measured by enrollment in Free/Reduced Lunch Programs, Limited English Proficiency or Special Education Programs.

<u>COUNTY NAME</u>	<u>DISTRICT NAME</u>	<u>SCHOOL NAME</u>	<u>CDS CODE</u>	<u>GRAD ESPAN</u>	<u>FRPL</u>	<u>LEP</u>	<u>SpED</u>
BERGEN	GLEN ROCK BORO	GLEN ROCK HIGH SCHOOL	03-1760-050 09-12		0.2%	0.4%	14.3%
BERGEN	MIDLAND PARK BORO	MIDLAND PARK HIGH SCHOOL	03-3170-050 07-12		0.4%	0.0%	12.7%
BERGEN	NORTHERN HIGHLANDS REGIONAL	NORTHERN HIGHLANDS REGIONAL HIGH SCHOOL	03-3700-050 09-12		0.6%	0.1%	11.3%
BERGEN	NORTHERN VALLEY REGIONAL	NORTHER VALLEY REG OLD TAPPEN HIGH SCHOOL	03-3710-060 09-12		1.3%	0.5%	13.5%
BERGEN	NORTHERN VALLEY REGIONAL	NORTHERN VALLEY REGIONAL HIGH SCHOOL AT DEMAREST	03-3710-050 09-12		1.3%	0.4%	19.6%
BERGEN	PASCACK VALLEY REGIONAL	PASCACK HILLS HIGH SCHOOL	03-3960-040 09-12		1.0%	0.3%	16.4%
BERGEN	PASCACK VALLEY REGIONAL	PASCACK VALLEY HIGH SCHOOL	03-3960-050 09-12		1.5%	0.3%	16.6%
BERGEN	RAMAPO-INDIAN HILL REG	INDIAN HILLS HIGH SCHOOL	03-4300-030 09-12		1.3%	0.0%	16.2%
BERGEN	RAMAPO-INDIAN HILL REG	RAMAPO HIGH SCHOOL	03-4300-050 09-12		0.6%	0.2%	12.8%
BERGEN	RUTHERFORD BORO	RUTHERFORD HIGH SCHOOL	03-4600-050 09-12		2.2%	0.6%	11.4%
CAMDEN	HADDONFIELD BORO	HADDONFIELD MEMORIAL HIGH SCHOOL	07-1900-050 09-12		2.2%	0.0%	14.7%
ESSEX	CALDWELL-WEST CALDWELL	JAMES CALDWELL HIGH SCHOOL	13-0660-050 09-12		2.3%	0.3%	12.7%
ESSEX	GLEN RIDGE BORO	GLEN RIDGE HIGH SCHOOL	13-1750-050 07-12		0.0%	0.2%	5.2%
ESSEX	LIVINGSTON TWP	LIVINGSTON HIGH SCHOOL	13-2730-050 09-12		1.0%	0.6%	12.8%
ESSEX	VERONA BORO	VERONA HIGH SCHOOL	13-5370-050 09-12		0.0%	0.7%	10.9%
ESSEX	WEST ESSEX REGIONAL	WEST ESSEX HIGH SCHOOL	13-5630-050 09-12		2.6%	0.3%	13.8%
HUNTERDON	N HUNT/VOORHEES REGIONAL	NORTH HUNTERDON HIGH SCHOOL	19-3660-050 09-12		1.2%	0.2%	13.6%
MERCER	HOPEWELL VALLEY REGIONAL	HOPEWELL VALLEY CENTRAL HIGH SCHOOL	21-2280-030 09-12		2.3%	0.1%	9.8%
MIDDLESEX	MONROE TWP	MONROE TOWNSHIP HIGH SCHOOL	23-3290-005 09-12		0.0%	1.4%	16.3%
MONMOUTH	RUMSON-FAIR HAVEN REG	RUMSON-FAIR HAVEN REGIONAL HIGH SCHOOL	25-4580-050 09-12		0.8%	0.1%	13.8%
MORRIS	HANOVER PARK REGIONAL	WHIPPANY PARK HIGH SCHOOL	27-1990-070 09-12		1.9%	0.3%	11.4%
MORRIS	KINNELON BORO	KINNELON HIGH SCHOOL	27-2460-050 09-12		1.3%	0.1%	13.0%
MORRIS	MONTVILLE TWP	MONTVILLE TOWNSHIP HIGH SCHOOL	27-3340-010 09-12		2.6%	0.4%	10.8%
MORRIS	MOUNTAIN LAKES BORO	MOUNTAIN LAKES HIGH SCHOOL	27-3460-050 09-12		0.9%	0.1%	17.2%
MORRIS	WEST MORRIS REGIONAL	WEST MORRIS CENTRAL HIGH SCHOOL	27-5660-030 09-12		1.0%	0.4%	15.4%
MORRIS	WEST MORRIS REGIONAL	WEST MORRIS MENDHAM HIGH SCHOOL	27-5660-050 09-12		0.6%	0.4%	13.6%
OCEAN	POINT PLEASANT BEACH BORO	POINT PLEASANT BEACH HIGH SCHOOL	29-4220-050 09-12		0.0%	0.0%	6.8%
OCEAN	POINT PLEASANT BORO	POINT PLEASANT BOROUGH HIGH SCHOOL	29-4210-030 09-12		0.0%	0.2%	13.7%
SOMERSET	BERNARDS TWP	RIDGE HIGH SCHOOL	35-0350-050 09-12		1.4%	0.3%	14.0%
UNION	BERKELEY HEIGHTS TWP	GOVERNOR LIVINGSTON HIGH SCHOOL	39-0310-005 09-12		2.9%	0.1%	11.4%
UNION	WESTFIELD TOWN	WESTFIELD SENIOR HIGH SCHOOL	39-5730-050 09-12		2.6%	0.2%	17.3%