

# December 2022 Traffic Report

AVIATION DEPARTMENT (Data As Of 2/3/2023 10:05:03 AM)

# REGION



## Revenue Passengers

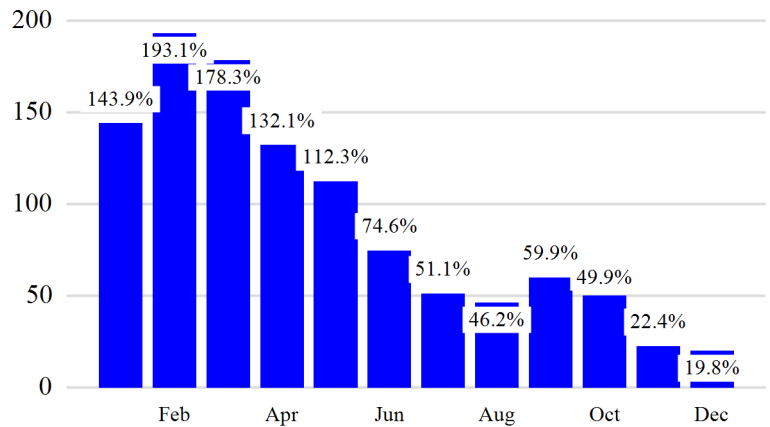
	Curr Month	% Change
	11,381,250	19.8% ▲
Domestic	7,773,808	12.1%
International	3,607,442	40.6%
Non-Revenue	288,449	10.0%

Load Factors	Curr Month
Domestic	81.3%
International	79.7%

80.8% Avg Load Factor

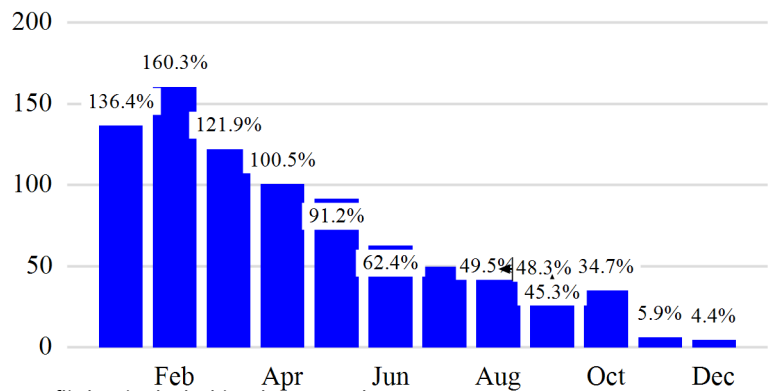
Year over Year % Change in Revenue Passengers - 12 Months



## Total Flights

	Curr Month	% Change
	103,396	6.2% ▲
<b>Excl GA</b>	98,697	4.4% ▲
Domestic	75,627	0.5%
International	23,070	19.7%
Gen Aviation	4,699	63.8%
Cargo Flights*	3,925	-19.4%

Year over Year % Change in Total Flights (Excl GA) - 12 Months

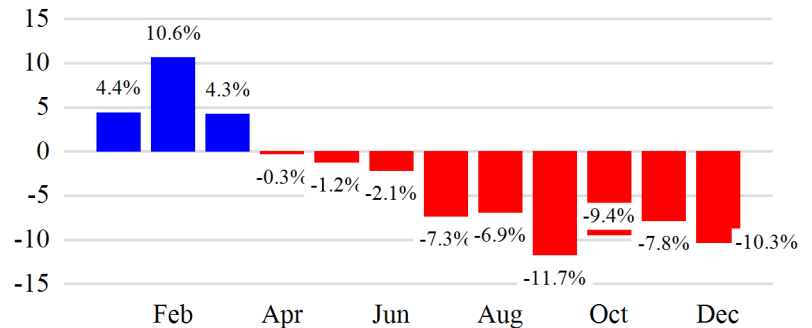


\* Cargo flights included in above totals

## Cargo (Short Tons)

	Curr Month	% Change
	204,365	-10.3% ▼
Domestic	94,796	-9.0%
International	109,570	-11.4%
Mail	12,916	-14.2%

Year over Year % Change in Cargo - 12 Months



### Top 5 Declines in Revenue Passengers by Airline

Airline	Pax Decline	% Decline
FRONTIER AIRLINES	(80,854)	-70.0%
KLM	(5,284)	-23.0%
FINNAIR	(3,648)	-22.0%
Avianca Costa Rica	(2,690)	-39.0%
COPA AIRLINES	(2,281)	-7.0%

### Top 5 Increases in Revenue Passengers by Airline

Airline	Pax Increase	% Increase
DELTA	450,544	23.0%
UNITED	370,872	15.0%
JETBLUE AIRWAYS	327,707	20.0%
SPIRIT AIRLINES	102,654	35.0%
AMERICAN	65,325	5.0%

## Airport Summary Statistics

### JFK Summary

	Current Month	YoY %
Total Revenue Pax	4,868,087	27.0
Total Flights Including GA	37,957	14.0
Total Cargo (Short Tons)	130,850	-7.3

### EWR Summary

	Current Month	YoY %
Total Revenue Pax	3,962,967	13.0
Total Flights Including GA	34,777	0.0
Total Cargo (Short Tons)	70,396	-15.6

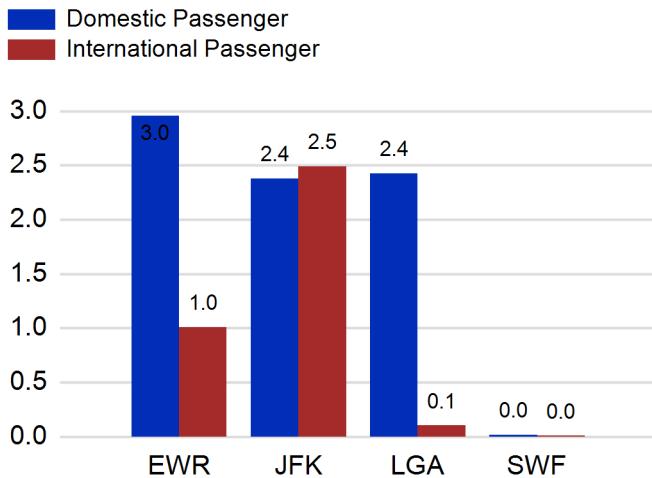
### LGA Summary

	Current Month	YoY %
Total Revenue Pax	2,527,394	15.0
Total Flights Including GA	28,534	4.0
Total Cargo (Short Tons)	548	-0.9

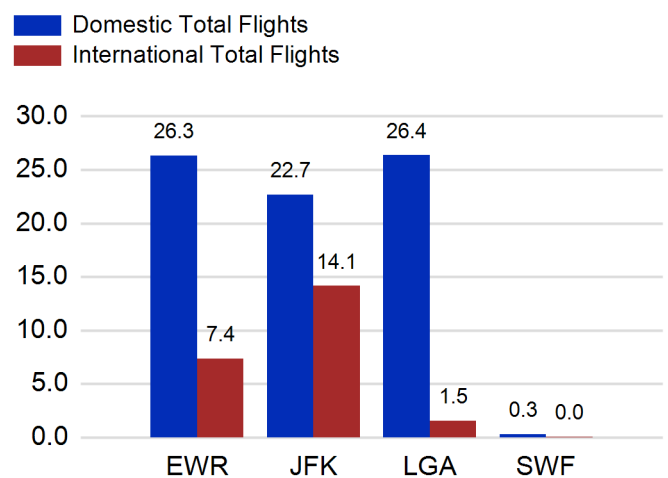
### SWF Summary

	Current Month	YoY %
Total Revenue Pax	22,802	14.0
Total Flights Including GA	2,128	0.0
Total Cargo (Short Tons)	2,572	-7.1

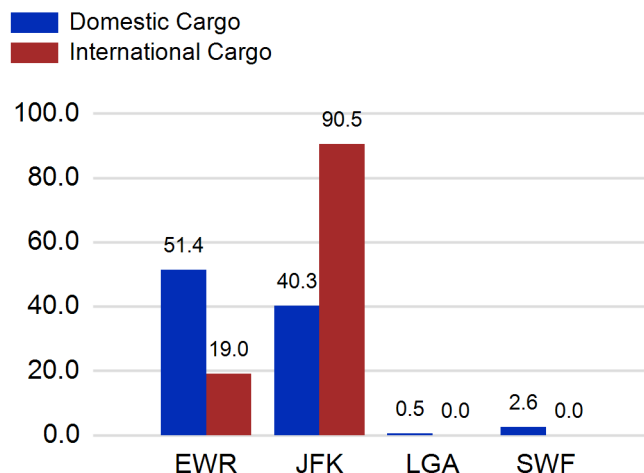
### Total Passengers by Airport (Millions)



### Total Flights by Airport (Thousands)



### Total Cargo by Airport (Thousands of Short Tons)



## 12 Months Ending Passenger & Freight Statistics

### Top 20 Airlines Ranking by Passengers & Freight: 12 Months Ending Dec 2022

Airline Name	Domestic	International	Total Pax	% of Tot	Airline Name	Short Tons	% of Tot
United	24,291,633	7,093,164	31,384,797	24.49%	FEDERAL EXPRESS	401,623	17.36%
DELTA	24,062,860	4,743,711	28,806,571	22.48%	UNITED PARCEL	206,878	8.94%
JETBLUE AIRWAYS	15,548,315	5,771,543	21,319,858	16.64%	UNITED	194,215	8.40%
AMERICAN	14,332,818	3,265,894	17,598,712	13.73%	AMERICAN	99,902	4.32%
SPIRIT AIRLINES	4,089,541	0	4,089,541	3.19%	DELTA	98,703	4.27%
SOUTHWEST AIRLINES	2,889,970	0	2,889,970	2.26%	KALITTA AIR LLC	85,614	3.70%
ALASKA AIRLINES	2,317,000	0	2,317,000	1.81%	ABX AIR INC	69,086	2.99%
BRITISH AIRWAYS	0	1,208,872	1,208,872	0.94%	ATLAS AIR	66,639	2.88%
AIR FRANCE	313	1,064,555	1,064,868	0.83%	CARGOLUX AIRLINES	56,313	2.43%
EMIRATES AIRLINES	0	983,080	983,080	0.77%	KOREAN	55,598	2.40%
VIRGIN ATLANTIC	0	820,849	820,849	0.64%	AIR TRANSPORT INT'L.(BAX Inc.)	51,643	2.23%
LUFTHANSA	0	785,038	785,038	0.61%	CHINA AIRLINES (CAL)	45,830	1.98%
TURKISH AIR	0	719,738	719,738	0.56%	BRITISH AIRWAYS	43,860	1.90%
Avianca Cargo	0	653,706	653,706	0.51%	TURKISH AIR	43,483	1.88%
AER LINGUS	0	639,055	639,055	0.50%	EVA	38,502	1.66%
AIR CANADA	0	573,223	573,223	0.45%	VIRGIN ATLANTIC	37,207	1.61%
AIR CANADA	0	558,910	558,910	0.44%	LUFTHANSA CARGO	33,655	1.45%
FRONTIER AIRLINES	516,179	2,467	518,646	0.40%	AIR FRANCE	31,719	1.37%
EL AL	0	509,875	509,875	0.40%	EUROPEAN AIR TRANSPORT	26,982	1.17%
IBERIA	0	454,199	454,199	0.35%	ASIANA	26,540	1.15%

### Passengers & Freight by Market - 12 Months Ending

Market	Passengers	Freight (Short Tons)
TRANSATLANTIC	22,044,158	909,220
CANADA	2,449,288	2,203
CARIBBEAN + BERMUDA	7,518,019	14,187
CENTRAL AND SOUTH AMERICA	3,983,221	62,601
DOMESTIC	86,341,720	982,927
MEXICO	2,232,506	13,965
TRANSPACIFIC	1,299,354	319,542
PUERTO RICO	2,280,224	8,572

## Additional Data

### Airline Schedules (ADI): Non-Stop Destinations

	Region	Flights (Daily)	Cities
Domestic	Domestic	2336.7	111
	Puerto Rico	39.3	3
	<b>Total</b>	<b>2,376.0</b>	<b>114.00</b>
International	Canada	150.3	8
	Caribbean & Bermuda	158.6	25
	Central & South America	72.9	18
	Mexico	50.3	6
	Trans-Atlantic	287.2	51
	Trans-Pacific	26.5	10
	Unknown	0.5	1
	<b>Total</b>	<b>746.2</b>	<b>119.00</b>
<b>Total</b>	<b>3,122.2</b>	<b>233.00</b>	

### Airline Schedules (ADI): Carriers & Aircraft Type

	Aircraft Type	Flights (Daily)	Carriers
Domestic	Commuter	808.3	4
	General Aviation	2.0	1
	Narrow Body	1502.7	10
	Unknown	2.0	1
International	Wide Body	61.0	4
	<b>Total</b>	<b>2,376.0</b>	<b>20.00</b>
	Commuter	137.9	5
	Narrow Body	304.9	22
	Wide Body	303.5	54
	<b>Total</b>	<b>746.2</b>	<b>81.00</b>
	<b>Total</b>	<b>3,122.2</b>	<b>101.00</b>

### Passenger Demographics (ACI ASQ Surveys - 2021)

#### Connect

Local Origin/Destination	78.6%
Connecting	21.4%

#### Transport Mode

Bus/Shuttle	4.7%
Other	18.7%
Private/Company Car	37.5%
Rail/Subway	7.3%
Rental Car	4.6%
Taxi/Limo	27.2%

#### Trip Type

Business	14.0%
Leisure	86.0%

#### Annual Flights

1-2	61.5%
3-5	24.9%
6-10	9.0%
11-20	2.8%
21+	1.8%

#### Gender

M	49.6%
F	50.4%

#### Residency

United States	81.0%
Other	19.0%

# December 2022 Traffic Report

AVIATION DEPARTMENT (Data As Of 2/3/2023 10:05:03 AM)

# REGION



## Ground Transportation

	<u>Curr Month</u>	<u>% Change</u>
<i>Paid Parked Cars</i>	355,132	-8.3
<i>GTC Bookings</i>	0	
<i>Airport Coach Passengers</i>	35,630	53.5
<i>Taxis Dispatched</i>	376,913	27.0

	<u>Curr Month</u>	<u>% Change</u>
<i>Total Air Train Passengers</i>	2,560,866	28.5
<i>Paid Howard Beach Passengers</i>	155,389	55.3
<i>Paid Jamaica Passengers</i>	471,953	24.4
<i>Paid EWR Passengers</i>	256,186	25.8
<i>On-Airport (Unpaid) Passengers</i>	1,677,338	28.1

## Airlines for American Carriers (USA)

	<u>Curr Month</u>	<u>% Change</u>
<i>Freight:revenue ton miles (000)</i>	0	

## Regional Airports: Other

	<u>Curr Month</u>	<u>% Change</u>
<i>TEB flight movements</i>	14,785	-5.3
<i>ISP Total passengers</i>	91,283	-23.7
<i>HPN Total passengers</i>	170,350	42.0