

752 974.905
044.4
c.1

DEPARTMENT OF HUMAN SERVICES
INTER-OFFICE COMMUNICATION

DATE September 19, 1996

TO William Waldman
Commissioner

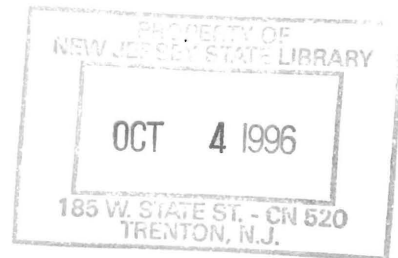
FROM Karen Highsmith
Acting Director

KH

SUBJECT CURRENT PROGRAM STATISTICS

Attached please find CURRENT PROGRAM STATISTICS, including the FDP Statistical Summary for July 1996. Also included are explanatory notes for the various data elements.

Should you have any questions, please feel free to call me.



KH:kas:c

Attachments

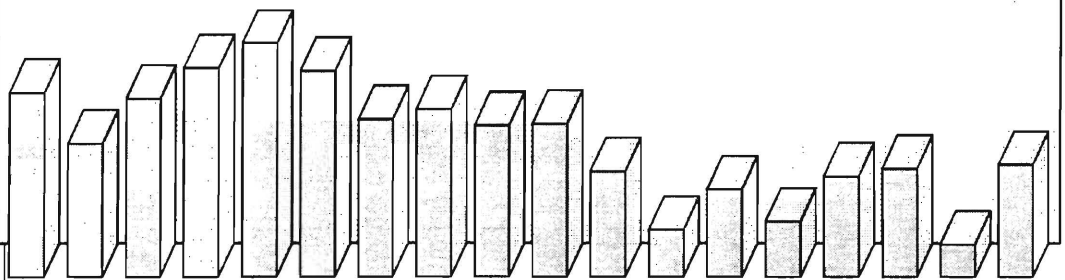
c Guhl
Grant
Tencza

*State of New Jersey
Department of Human Services
Division of Family Development*

CURRENT PROGRAM STATISTICS

July 1996

Karen Highsmith, Acting Director



State of New Jersey
 Department of Human Services
 Division of Family Development

CURRENT PROGRAM STATISTICS
 July 1996

TABLE OF CONTENTS

	Page
Highlights of Current Program Statistics	1-3
 Statistics by County, July 1996	
Table 1 AFDC	4
Graph 1 Current AFDC Families	5
Table 2 Food Stamp Program.....	6
Graph 2 Current Food Stamp Households/Persons	7
Table 3 AFDC/SSI Emergency Assistance Program	8
Graph 3 Current AFDC Families Receiving Emergency Assistance	9
Table 4 Family Development Program.....	10
 State Summary, 1994 - 1996	
Table 5 AFDC, July 1994 - July 1996	12
Graph 4 Families Receiving AFDC, 7/94 - 7/96	12
Table 6 Food Stamp Program, July 1994 - July 1996	13
Graph 5 Food Stamp Households, 7/94 - 7/96	14
Graph 6 Food Stamp Recipients, 7/94 - 7/96.....	15
Table 7 AFDC Emergency Assistance Program, July 1994 - July 1996	16
Graph 7 AFDC Families Receiving Emergency Assistance, 7/94 - 7/96	17
Table 8 JOBS/FDP Participation Rates, by County and Statewide, July 1994 - July 1996	18
Graph 8 JOBS/FDP Participation Rates, 7/94 - 7/96	18-19
Table 9 General Assistance, and GA Emergency Assistance, April 1994 - April 1996	20
Graph 9 General Assistance Recipients, 4/94-4/96	21
Table 10 Child Support and Paternity, Fiscal Years 1994-1996	22
Explanatory Notes.....	23-24
 Supplement	
Table 11a General Assistance Recipients and EA Payments by County and Municipality, March 1996	25
Table 11b General Assistance Recipients and EA Payments by County and Municipality, April 1996.....	26

Highlights of Current Program Statistics

AFDC (Tables 1 and 5, Graphs 1 and 4)

112,000 eligible families in New Jersey were receiving AFDC as of the end of July 1996:

- **101,000** single head of household families (Regular AFDC, C segment).
- Among two-parent families, over **2800** Unemployed Parent families (F Segment) and **3100** State AFDC families (N Segment).
- **5200** Medicaid Only families.
- The largest numbers of families by county: Essex with **28,500**, Hudson with **17,800**, and Camden County with **12,800**. (52.7 percent of all AFDC families)
- Other counties ranged from under **200** families in Hunterdon to **7,300** in Passaic County.

There were about 1100 fewer eligible families in July 1996 than in June 1996, with a total decline of close to 12,000 over the past two years since the July 1994 level of 123,800.

- There were also about **1000** fewer eligible C segment families in July 1996 than in June 1996 and more than **10,000** below the July 1994 level of **111,100**.
- F segment families declined from about **4300** in July 1994 to about **3200** by October 1995, with a further decline to **2,800** by July 1996.
- State AFDC (N segment) was about **3400** in July 1994 and slowly declined to less than **3100** by July 1996.
- Medicaid Only families remained at or below **5000** in 1994, but averaged nearly **5200** for 1995. For the first seven months of 1996 they have averaged close to **5100**.

FOOD STAMP PROGRAM (Tables 2 and 6, Graphs 2, 5, and 6)

At the end of July 1996, about 218,000 households were participating in the Food Stamp Program:

- **106,000** AFDC households with **331,000** persons.
- **112,000** Other Low Income households with **170,000** persons.
- With a total of less than **502,000** persons, including almost **241,000** adults and almost **261,000** children
- **48.6 percent** of the households were in Essex (**55,000**), Hudson (**30,000**) and Camden (**21,000**) Counties.
- In July, the number of adults exceeded the number of children in Food Stamp households in **seven** counties (Bergen, Hunterdon, Monmouth, Morris, Somerset, Sussex, and Warren).

Food Stamp households in New Jersey remained in the 220,000 to 223,000 range from July 1994 through June 1996 except for a peak in March 1995 of almost 225,000. At less than 218,000 total Food Stamp households, July 1996 is the second month with a large decline.

- The number of Other Low Income households has exceeded the number of AFDC(FS) households since November 1995, with a difference of more than **6000** in July 1996. The average number of Other Low Income households receiving Food Stamps was **106,000** for all of 1994 and **113,000** for the first seven months of 1996, though there was a decline in the June and July 1996. AFDC(FS) households averaged nearly **115,000** for 1994, and only **108,000** for the first seven months of 1996.
- After a peak of **529,000** in March 1995, the number of Total Recipients has been moving downward. With a steeper decline in recent months, the July 1996 level of less than **502,000** was almost **12,000** below just two months earlier.
- The number of Recipient Adults averaged about **246,000** for 1994 through the first five months of 1996. From May through July the number declined from about **247,000** to **241,000**.
- The average number of Recipient Children was **279,000** for all of 1994, **273,000** in 1995, and less than **266,000** for the first seven months of 1996 with a **6,000** drop from May through July.

EMERGENCY ASSISTANCE (Tables 3, 7 and 9, Graphs 3, 7 and 9)

In July 1996 5,044 eligible AFDC families and 410 SSI recipients received Emergency Assistance (EA) payments in New Jersey. For AFDC families this included:

- **1,729** families with Temporary Rental Assistance (TRA)
- **335** motel placements and **377** emergency shelter placements
- All other AFDC-EA accounted for **2,603** families, including back rent, back utilities, security deposits, furnishings, clothing and food allowance, or transitional housing.
- **1,250** AFDC families in Essex County received EA, with **671** in Middlesex, **556** in Passaic, and **445** in Bergen. All other counties had between **7** and **382**, with nine counties **under 100**.

In the past two years, the average number of AFDC families receiving EA payments was 7300 in 1994, 5800 in 1995, and 4900 for the first seven months of 1996.

- The number of AFDC families provided TRA each month has declined steadily from an average of **3200** in 1994 to **1800** for the first seven months of 1996.
- Emergency Shelter has been provided to an average of **under 400** AFDC families for 1994 through the first seven months of 1996.
- Motel Housing declined from an average of close to **500** in 1994 to about **300** for the first seven months of 1996.
- An average of **3300** families received Other EA in 1994, **2800** in 1995, and almost **2500** for the first seven months of 1996. The number had dropped below **2100** in February 1996.

For 1994 there was an average of 7800 GA EA recipients, and average of 7400 for 1995 and the first four months of 1996. TRA payments were made to an average of 4700 recipients in 1994 and an average of less than 4500 for 1995 and the first four months of 1996.

JOBS/FDP PARTICIPATION RATES (Table 8, Graph 8)

The Statewide JOBS/FDP participation rate of **25.7 percent** in July 1996 was three points below the two year high of **28.6 percent** set in May, which closely matches the decline over the same period last year. July 1996 is more than three points higher than July 1995, and more than eight points above two years ago. An upward shift over the past two years continues to be evident.

- Though most counties have had increasing participation rates since July 1994, Bergen, Camden, and Mercer have had little or no increase overall. With some fluctuations, Burlington, Cape May, Essex, Gloucester, Hudson, Middlesex, Monmouth, Ocean, Passaic and Union showed upward movement. Cumberland has maintained very high participation rates. Atlantic, Salem, Somerset, Sussex, and Warren also exhibited high rates, but have had wide fluctuations. Hunterdon jumped to higher levels during 1995, while Morris increased markedly in 1995 and remains at record levels (over 90 percent).
- For July 1996 County rates were distributed as follows:
 - 15 to 20 percent** -- Camden and Essex and Hudson
 - 20 to 30 percent** -- Bergen, Burlington, Cape May, Gloucester, Mercer, Monmouth, Ocean and Union
 - 30 to 40 percent** -- Middlesex, Passaic, Salem and Warren
 - 40 to 60 percent** -- Atlantic, Cumberland, Hunterdon and Sussex
 - over 60 percent** -- Morris and Somerset
- From June to July 1996, participation rates declined in seventeen of the State's 21 counties.

GENERAL ASSISTANCE (Table 9, Graph 9)

From April 1994 through April 1996 (latest available), the number of GA recipients peaked at **37,500** in May 1994. The level held around **35,000** from September 1994 through April 1995, and was below **34,000** thereafter, until March and April 1996 exceeded **34,000**.

- The number of employable recipients was **25,500** in April 1994, then declined to a low of **21,000** in July 1995, with spikes at about **24,000** in January and March 1995. Since then the level increased to over **23,000** with a peak of **23,500** in March 1996.
- Over the two year period Unemployable GA recipients remained within a fairly narrow range. The level remained between **11,000 and 12,300** from October 1993 through July 1995, then declined fairly steadily, with a trough at **10,000** from November 1995 through January 1996. During February through April the level remained around **11,000**.

CHILD SUPPORT AND PATERNITY COLLECTIONS (Table 10)

Total collections of the Child Support and Paternity Program declined by **2.2 percent**, from **\$574 million** in SFY 1995 to **\$561 million** in SFY 1996.

- AFDC/Foster Care collections remained nearly unchanged at over **\$95 million**, with an increase of only **\$200 thousand** or **0.2 percent**. Non-AFDC collections dropped from **\$479 million** to **\$466 million**, a decline of **2.7 percent**.
- Total Federal tax and UIB collections each increased by **\$6 million**, which were more than offset by a decline of **\$27 million** decline (**15 percent**) in the Other/Own Behalf category.

New Jersey Department of Human Services
Division of Family Development

TABLE 1

AFDC Program

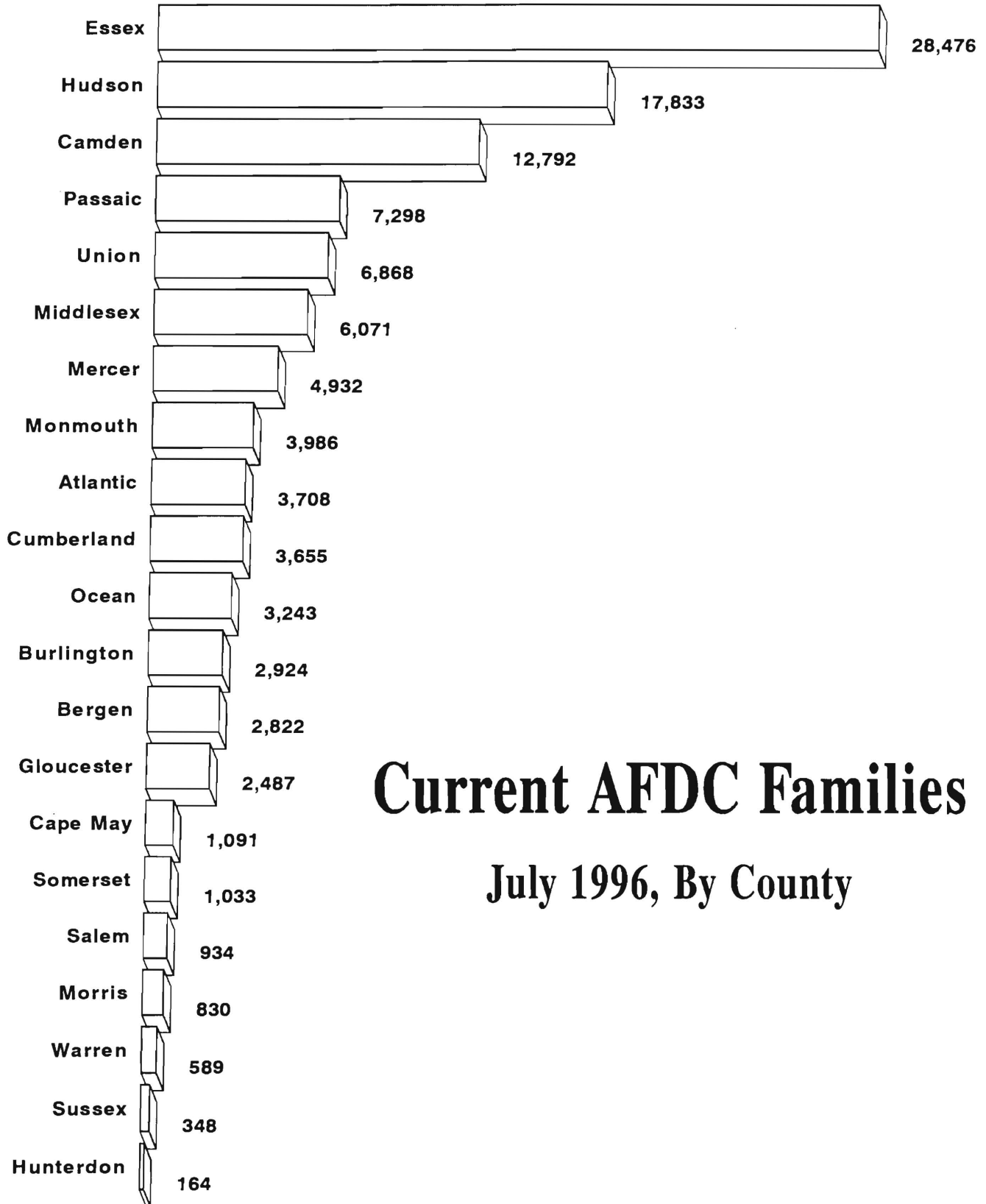
**NUMBER OF APPLICATIONS AND TERMINATIONS DURING REPORT MONTH, AND
NUMBER OF ELIGIBLE FAMILIES RECEIVING AFDC AT END OF REPORT MONTH**

July 1996

County	Applications Approved	Terminations	Regular AFDC (C Segment)	Unemployed Parents (F)	State AFDC (N)	Medicaid Only	TOTAL AFDC
Atlantic	267	369	3,400	100	71	137	3,708
Bergen	128	169	2,507	120	116	79	2,822
Burlington	242	247	2,547	65	80	232	2,924
Camden	685	841	11,178	499	388	727	12,792
Cape May	84	136	898	48	69	76	1,091
Cumberland	269	342	3,077	164	197	217	3,655
Essex	971	1,228	27,096	406	215	759	28,476
Gloucester	179	263	2,164	101	69	153	2,487
Hudson	570	684	15,993	320	622	898	17,833
Hunterdon	22	24	132	4	5	23	164
Mercer	458	471	4,400	85	98	349	4,932
Middlesex	402	380	5,043	232	272	524	6,071
Monmouth	233	295	3,699	72	153	62	3,986
Morris	58	91	747	26	23	34	830
Ocean	215	330	2,743	130	147	223	3,243
Passaic	376	376	6,713	265	251	69	7,298
Salem	86	104	828	16	31	59	934
Somerset	143	154	840	42	35	116	1,033
Sussex	37	64	296	10	4	38	348
Union	404	406	6,171	110	193	394	6,868
Warren	45	53	496	28	34	31	589
NJ TOTAL	5,874	7,027	100,968	2,843	3,073	5,200	112,084

Data Sources: Data is derived from NJ Division of Family Development's FAMIS report # FF-012.

GRAPH 1



Current AFDC Families

July 1996, By County

New Jersey Department of Human Services
Division of Family Development

TABLE 2

FOOD STAMP Program

**NUMBER OF ATP'S ISSUED TO HOUSEHOLDS, PERSONS, ADULTS
AND CHILDREN AT THE END OF THE REPORT MONTH**

July 1996

County	HOUSEHOLDS			PERSONS				
	AFDC	Other low income	TOTAL	TOTAL	AFDC	Other low income	Adults	Children
Atlantic	3,392	4,669	8,061	17,381	10,969	6,412	8,659	8,722
Bergen	2,589	5,649	8,238	16,342	7,733	8,609	9,606	6,736
Burlington	2,592	2,865	5,457	12,426	7,857	4,569	6,133	6,293
Camden	12,342	8,818	21,160	52,924	40,152	12,772	23,747	29,177
Cape May	1,020	1,130	2,150	5,333	3,411	1,922	2,560	2,773
Cumberland	3,592	2,726	6,318	16,284	11,909	4,375	7,465	8,819
Essex	27,780	26,996	54,776	124,880	85,951	38,929	58,748	66,132
Gloucester	2,262	1,775	4,037	9,931	7,059	2,872	4,646	5,285
Hudson	16,787	13,012	29,799	71,401	51,203	20,198	32,540	38,861
Hunterdon	129	362	491	948	382	566	548	400
Mercer	4,494	4,513	9,007	19,652	13,787	5,865	9,354	10,298
Middlesex	5,421	6,004	11,425	25,356	16,267	9,089	12,654	12,702
Monmouth	3,828	6,254	10,082	21,637	12,151	9,486	11,250	10,387
Morris	727	1,836	2,563	5,036	2,160	2,876	2,970	2,066
Ocean	3,239	4,523	7,762	19,483	10,604	8,879	9,156	10,327
Passaic	6,902	9,667	16,569	38,447	22,704	15,743	18,591	19,856
Salem	876	767	1,643	4,076	2,830	1,246	1,860	2,216
Somerset	972	1,886	2,858	5,604	2,836	2,768	3,103	2,501
Sussex	310	625	935	2,058	919	1,139	1,105	953
Union	5,833	6,940	12,773	28,802	18,508	10,294	14,252	14,550
Warren	566	1,006	1,572	3,574	1,765	1,809	1,893	1,681
NJ TOTAL	105,653	112,023	217,676	501,575	331,157	170,418	240,840	260,735

ATP - Authorization to Participate, may include some duplication

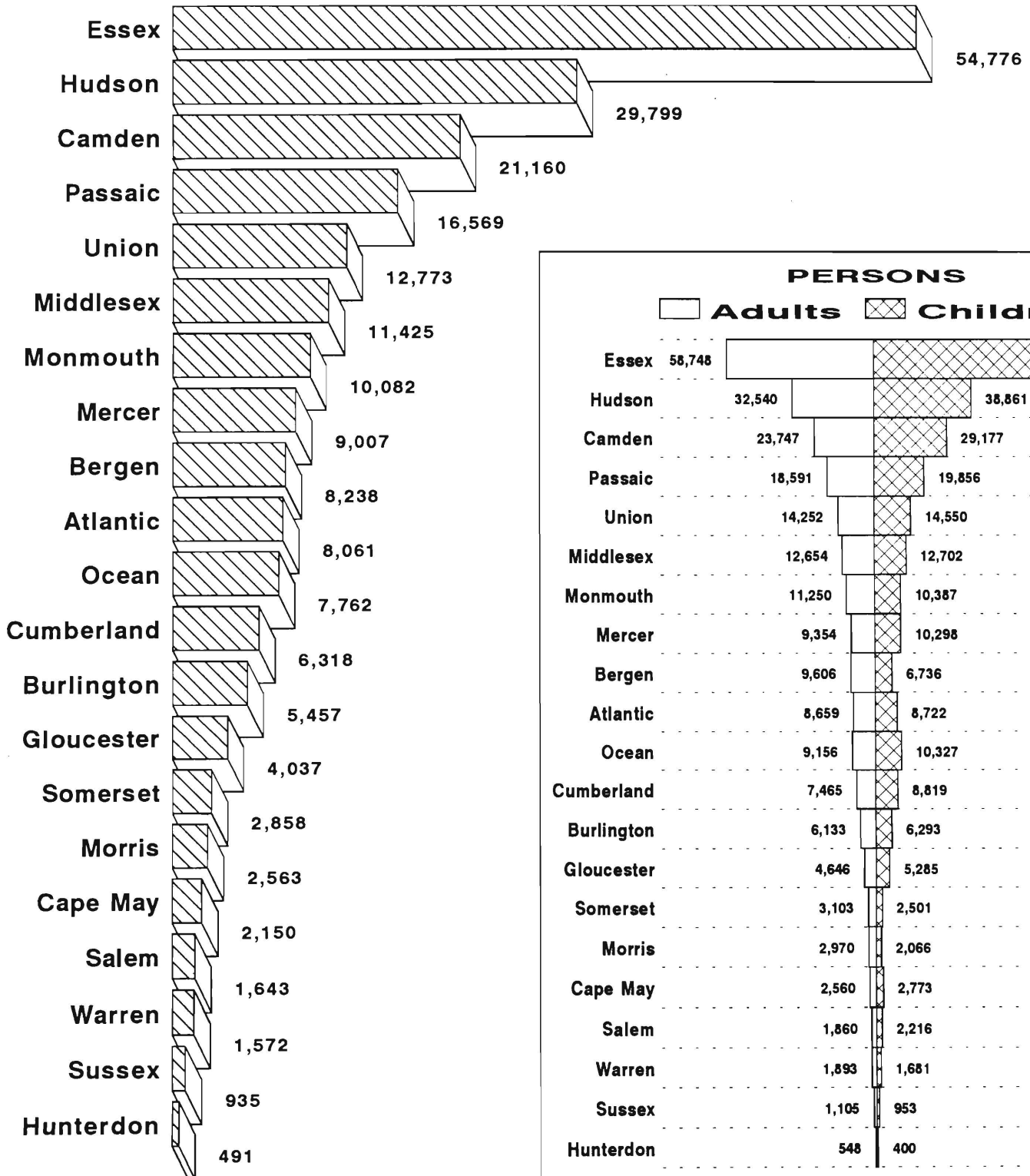
Data Sources: Data is derived from NJ Division of Family Development's FAMIS report # FB-160.

GRAPH 2

Food Stamp Households

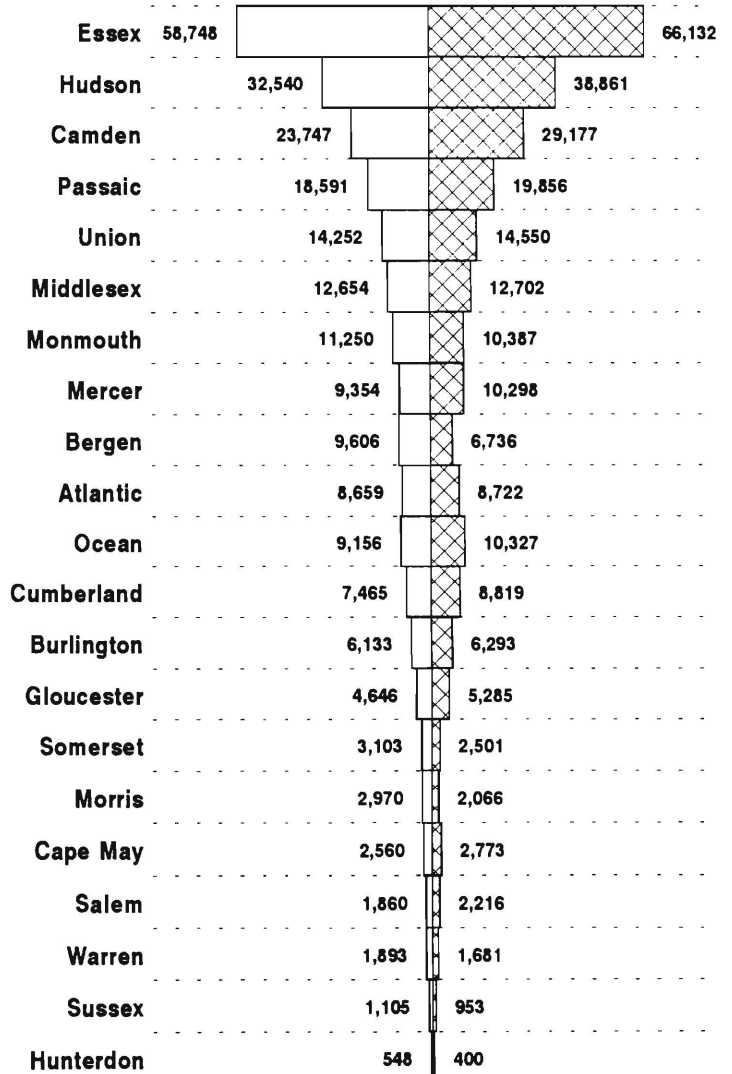
July 1996, By County

 **HOUSEHOLDS**



PERSONS

 **Adults**  **Children**



New Jersey Department of Human Services
Division of Family Development

TABLE 3

AFDC/SSI EMERGENCY ASSISTANCE

NUMBER OF ELIGIBLE FAMILIES RECEIVING EMERGENCY ASSISTANCE PAYMENTS
(UNDUPLICATED CASES)

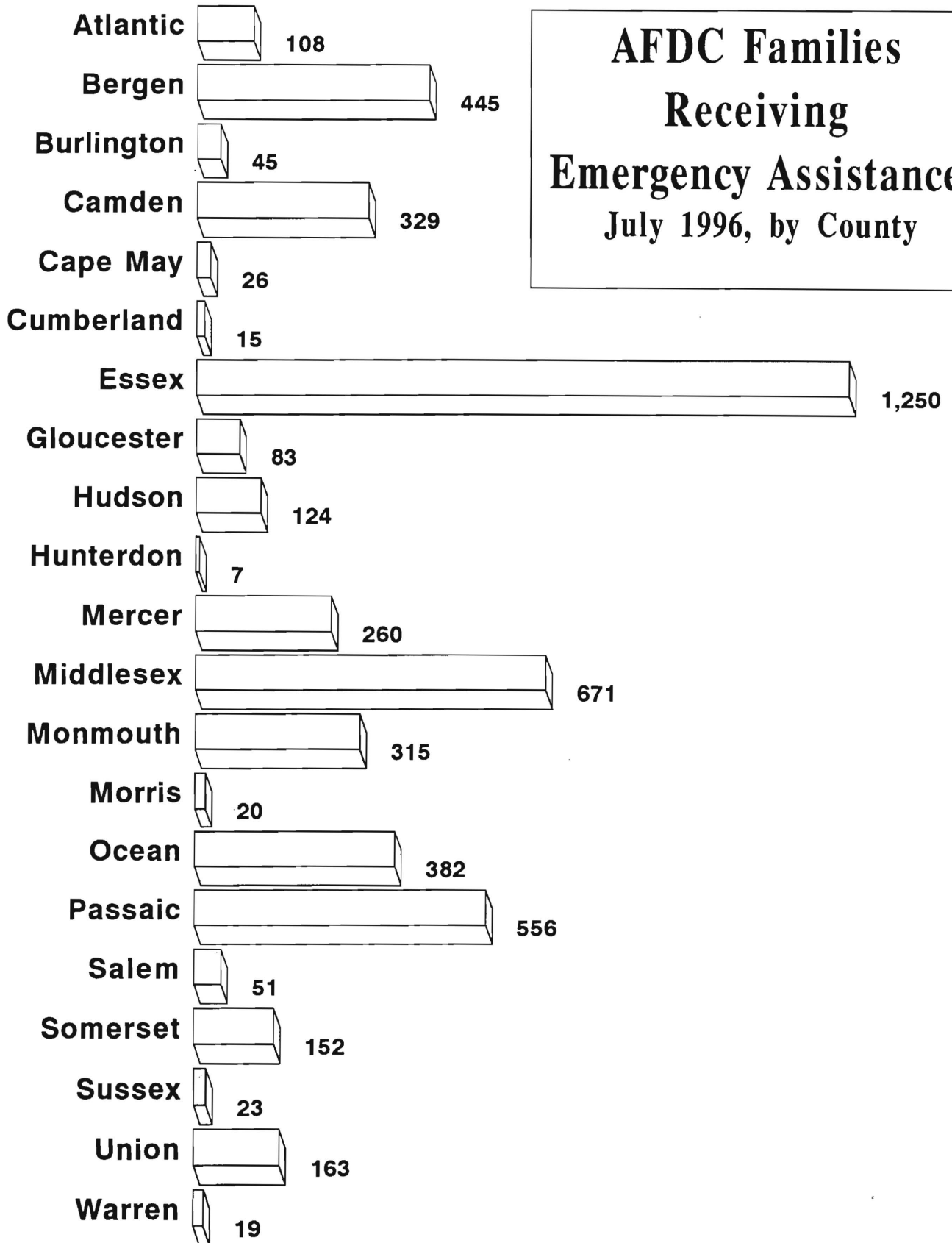
July 1996

County	AFDC Families Receiving Emergency Assistance					SSI Recipients Receiving EA
	TOTAL AFDC -EA	Temporary Rental Assist	Motel Housing	Emergency Shelter	Other AFDC-EA	
ATLANTIC	108	29	19	8	52	23
BERGEN	445	233	26	27	159	21
BURLINGTON	45	2	2	26	15	7
CAMDEN	329	75	6	40	208	30
CAPE MAY	26	3	2	0	21	3
CUMBERLAND	15	1	1	6	7	2
ESSEX	1,250	572	6	89	583	42
GLOUCESTER	83	35	1	32	15	6
HUDSON	124	15	5	31	73	5
HUNTERDON	7	2	1	2	2	1
MERCER	260	82	19	5	154	35
MIDDLESEX	671	374	25	15	257	36
MONMOUTH	315	123	44	3	145	8
MORRIS	20	1	0	8	11	9
OCEAN	382	117	109	7	149	85
PASSAIC	556	5	6	23	522	58
SALEM	51	17	14	4	16	1
SOMERSET	152	17	20	26	89	14
SUSSEX	23	1	8	6	8	7
UNION	163	25	8	16	114	13
WARREN	19	0	13	3	3	4
NJ TOTAL	5,044	1,729	335	377	2,603	410

Data Sources: Derived from NJ Division of Family Development FAMIS Reports #FM 457 and #FM 430-03a.

GRAPH 3

**AFDC Families
Receiving
Emergency Assistance
July 1996, by County**



NEW JERSEY DEPARTMENT OF HUMAN SERVICES
DIVISION OF FAMILY DEVELOPMENT

TABLE 4
FAMILY DEVELOPMENT PROGRAM
STATISTICAL SUMMARY

COUNTY	SNAPSHOT OF ACTIVITY AS OF JULY 1996				ACTIVITY FOR MONTH OF JULY 1996					
	TOTAL NONEXMT JOBS/FDP RECI- PIENTS	EMPLOYMENT DIRECTED ACTIVITIES(1)			PARTIC IN EDAs & RECEIVE SUPPORT SERVICES		PARTIC W/ 1st C M INTV	# EMPL THIS MONTH & STILL REC AFDC	# CLSD ON FAMIS RE: EARNINGS (2)	POST AFDC & REC CHILD CARE
		TRAIN- ING	EDUCA- TION	JOB SEARCH	TRES	CHILD CARE				
ATLANTIC	1,272	276	84	116	249	232	153	85	128	207
BERGEN	1,796	223	120	43	202	131	38	14	38	78
BURLINGTON	1,397	215	70	59	272	200	97	66	70	200
CAMDEN	8,898	656	228	201	596	420	1,220	54	137	242
CAPE MAY	508	34	4	50	40	20	70	38	44	7
CUMBERLAND	1,432	244	123	36	482	240	198	83	82	133
ESSEX	17,453	1,543	615	387	2,071	1,542	471	103	163	167
GLOUCESTER	1,037	279	69	51	414	130	82	19	32	69
HUDSON	11,290	933	726	149	1,730	906	278	59	165	282
HUNTERDON	80	11	10	12	4	7	6	7	10	9
MERCER	2,995	297	232	50	278	257	49	44	84	127
MIDDLESEX	3,323	301	289	307	379	199	215	89	81	134
MONMOUTH	2,478	319	242	136	454	328	169	55	77	187
MORRIS	402	201	31	49	64	98	49	17	17	56
OCEAN	1,742	208	64	91	108	58	137	48	90	132
PASSAIC	3,833	950	320	77	1,043	417	261	55	88	149
SALEM	355	29	59	8	59	58	20	7	22	50
SOMERSET	537	73	52	23	76	66	18	24	22	41
SUSSEX	181	46	26	31	35	37	13	9	17	36
UNION	3,788	397	235	173	477	258	49	28	67	124
WARREN	400	68	35	38	20	21	18	15	7	9
STATE	65,197	7,303	3,634	2,087	9,053	5,625	3,611	919	1,441	2,439

(1) - The number of participants receiving support services may occasionally exceed the number actively participating in EDAs. This can result from extended assessment or evaluation activities, or the issuance of bridge payments.

(2) - FAMIS file date 7/20/96

New Jersey Department of Human Services
Division of Family Development

TABLE 5

AFDC Program State Summary

**NUMBER OF APPLICATIONS AND TERMINATIONS DURING REPORT MONTH,
AND NUMBER OF ELIGIBLE FAMILIES RECEIVING AFDC AT END OF REPORT MONTH**

July 1994 through July 1996

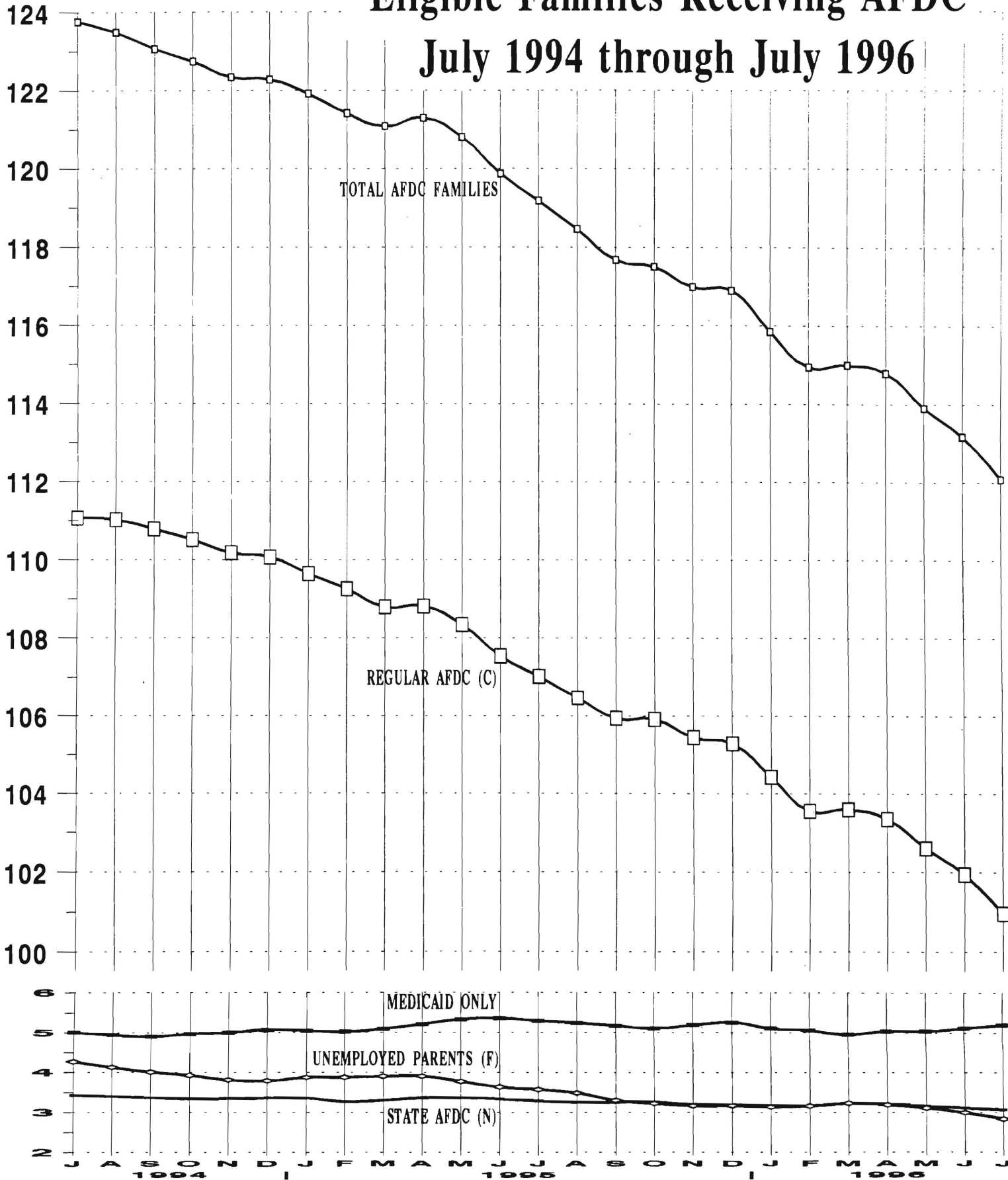
	Applications Approved	Termin- ations	Regular AFDC (C Segment)	Unemployed Parents (F)	State AFDC (N)	Medicaid Only	TOTAL AFDC
1994 Jul	5,117	5,898	111,064	4,266	3,428	5,007	123,765
Aug	6,435	6,827	111,025	4,128	3,401	4,940	123,494
Sep	6,266	6,754	110,790	4,007	3,369	4,900	123,066
Oct	6,592	6,950	110,517	3,927	3,340	4,966	122,750
Nov	6,344	6,796	110,181	3,814	3,350	5,002	122,347
Dec	5,682	5,890	110,070	3,789	3,360	5,065	122,284
AVERAGE (12 MONTHS)	6,014	6,150	110,901	4,195	3,351	4,928	123,375
1995 Jan	5,583	5,944	109,645	3,875	3,358	5,045	121,923
Feb	5,964	6,515	109,261	3,878	3,270	5,016	121,425
Mar	5,810	6,221	108,800	3,903	3,305	5,088	121,096
Apr	7,096	7,086	108,822	3,907	3,365	5,209	121,303
May	5,288	5,784	108,343	3,773	3,369	5,328	120,813
Jun	5,558	6,458	107,541	3,639	3,336	5,358	119,874
Jul	5,977	6,781	107,028	3,574	3,286	5,293	119,181
Aug	5,547	6,294	106,475	3,489	3,260	5,239	118,463
Sep	5,922	6,647	105,943	3,303	3,260	5,175	117,681
Oct	7,062	7,359	105,917	3,224	3,257	5,110	117,508
Nov	6,083	6,660	105,445	3,164	3,199	5,189	116,997
Dec	5,582	5,775	105,287	3,165	3,189	5,258	116,899
AVERAGE	5,956	6,460	107,376	3,575	3,288	5,192	119,430
1996 Jan	5,332	6,236	104,430	3,139	3,173	5,113	115,855
Feb	5,217	6,283	103,561	3,161	3,170	5,060	114,952
Mar	6,317	6,302	103,598	3,230	3,217	4,956	115,001
Apr	6,896	7,241	103,352	3,192	3,211	5,040	114,795
May	5,335	6,152	102,600	3,112	3,163	5,038	113,913
Jun	5,319	6,121	101,947	2,999	3,117	5,116	113,179
Jul	5,874	7,027	100,968	2,843	3,073	5,200	112,084
AVERAGE	5,756	6,480	102,922	3,097	3,161	5,075	114,254

Data Sources: Data is derived from NJ Division of Family Development's FAMIS report # FF-012.

GRAPH 4

Eligible Families Receiving AFDC July 1994 through July 1996

THOUSANDS



New Jersey Department of Human Services
Division of Family Development

TABLE 6

FOOD STAMP Program State Summary

NUMBER OF ATP'S ISSUED TO HOUSEHOLDS, PERSONS, ADULTS AND CHILDREN AT THE END OF THE REPORT MONTH

July 1994 through July 1996

	HOUSEHOLDS			TOTAL	TOTAL	PERSONS		
	AFDC	Other low income	TOTAL			AFDC	Other low income	Adults
1994 Jul	115,172	105,717	220,889	526,075	362,520	163,555	246,142	279,933
Aug	114,809	106,115	220,924	524,659	361,106	163,553	246,052	278,607
Sep	114,177	105,972	220,149	521,945	358,849	163,096	244,835	277,110
Oct	114,039	106,903	220,942	522,406	358,010	164,396	245,676	276,730
Nov	114,251	107,577	221,828	524,090	358,582	165,508	246,659	277,431
Dec	114,232	107,467	221,699	523,825	358,446	165,379	246,517	277,308
AVERAGE (12 MONTHS)	114,789	105,924	220,714	525,325	361,323	164,003	246,043	279,282
1995 Jan	113,691	107,493	221,184	522,125	356,763	165,362	245,837	276,288
Feb	113,830	108,421	222,251	524,344	357,419	166,925	247,107	277,237
Mar	114,339	110,279	224,618	529,456	359,404	170,052	249,994	279,462
Apr	113,588	108,991	222,579	524,102	356,717	167,385	247,367	276,735
May	113,125	109,171	222,296	522,173	355,099	167,074	246,949	275,224
Jun	112,827	109,198	222,025	521,084	354,211	166,873	246,557	274,527
Jul	111,635	107,978	219,613	515,478	350,378	165,100	243,727	271,751
Aug	111,415	109,603	221,018	516,618	349,372	167,246	245,110	271,508
Sep	110,760	109,154	219,914	513,517	347,126	166,391	243,723	269,794
Oct	110,697	110,268	220,965	514,598	346,519	168,079	244,911	269,687
Nov	110,630	110,763	221,393	514,823	346,034	168,789	245,455	269,368
Dec	109,992	110,155	220,147	511,727	343,955	167,772	243,965	267,762
AVERAGE	112,211	109,290	221,500	519,170	351,916	167,254	245,892	273,279
1996 Jan	109,554	111,166	220,720	512,165	342,778	169,387	244,801	267,364
Feb	109,649	112,813	222,462	515,181	343,314	171,867	246,961	268,220
Mar	109,364	113,895	223,259	515,676	342,361	173,315	247,695	267,981
Apr	108,787	114,163	222,950	514,375	340,597	173,778	247,380	266,995
May	108,205	114,458	222,663	513,213	338,891	174,322	246,918	266,295
Jun	106,875	112,888	219,763	506,926	334,762	172,164	243,422	263,504
Jul	105,653	112,023	217,676	501,575	331,157	170,418	240,840	260,735
AVERAGE	108,298	113,058	221,356	511,302	339,123	172,179	245,431	265,871

ATP - Authorization to Participate

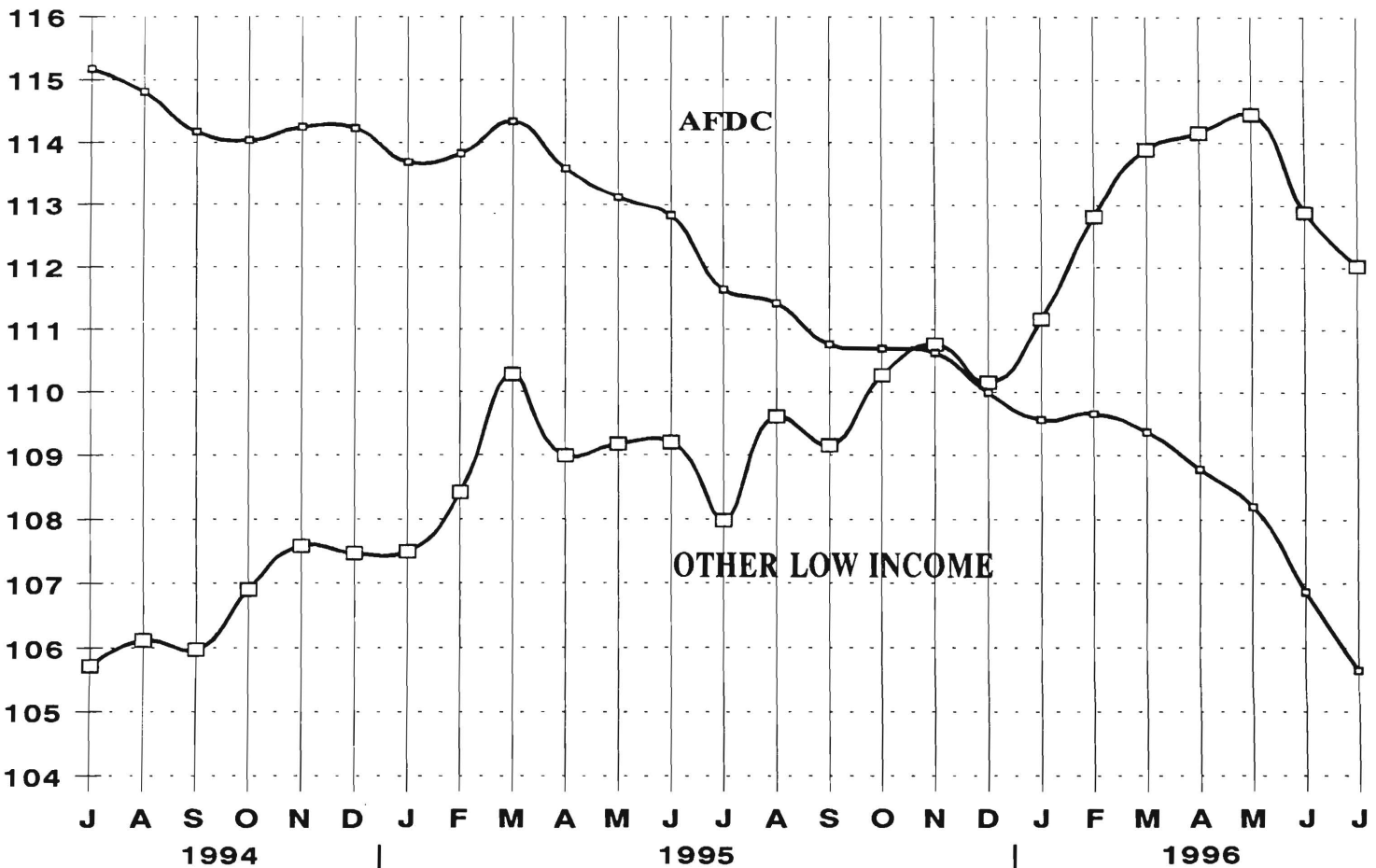
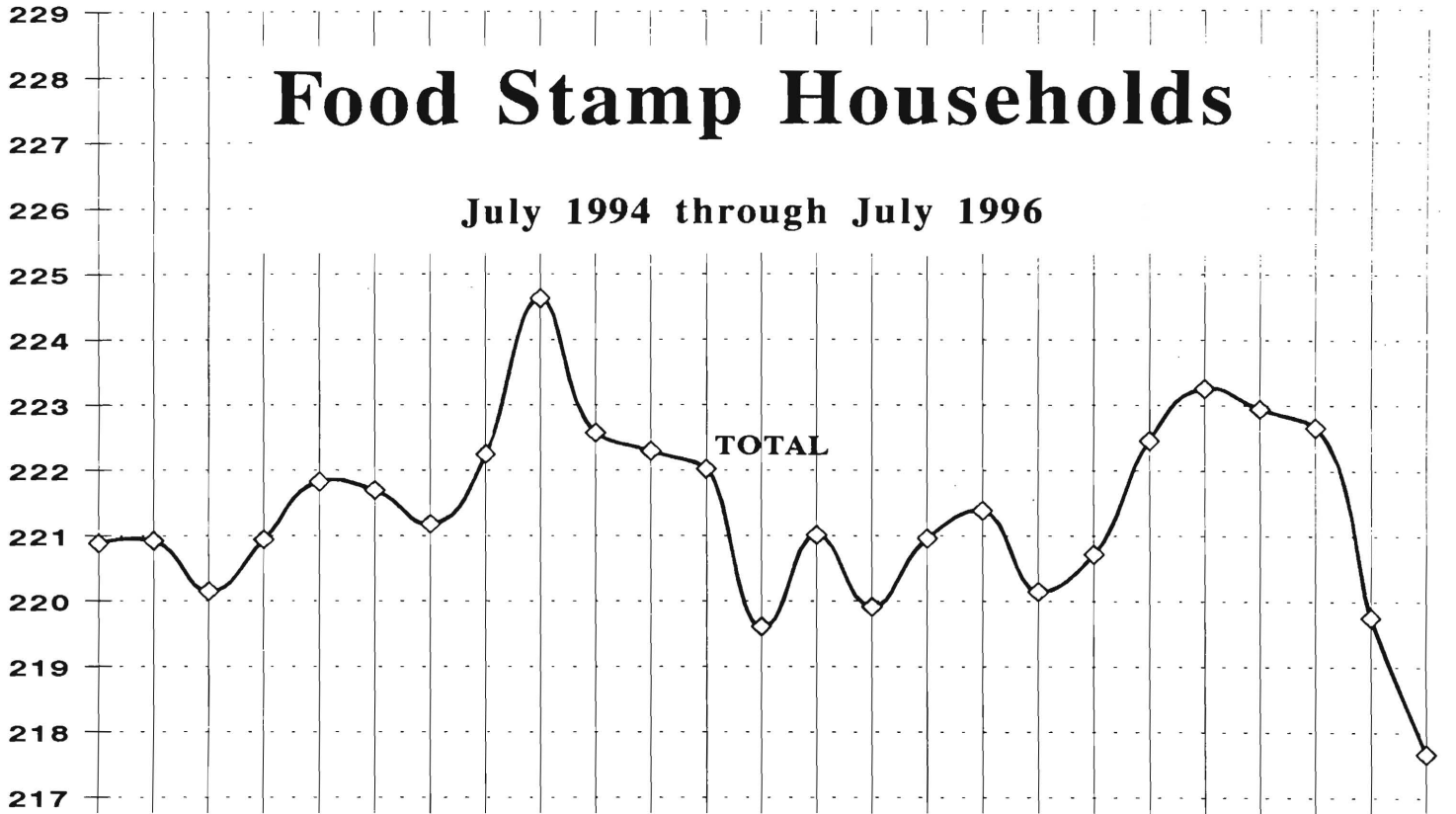
Data Sources: Data is derived from NJ Division of Family Development's FAMIS report # FB-160.

GRAPH 5

Food Stamp Households

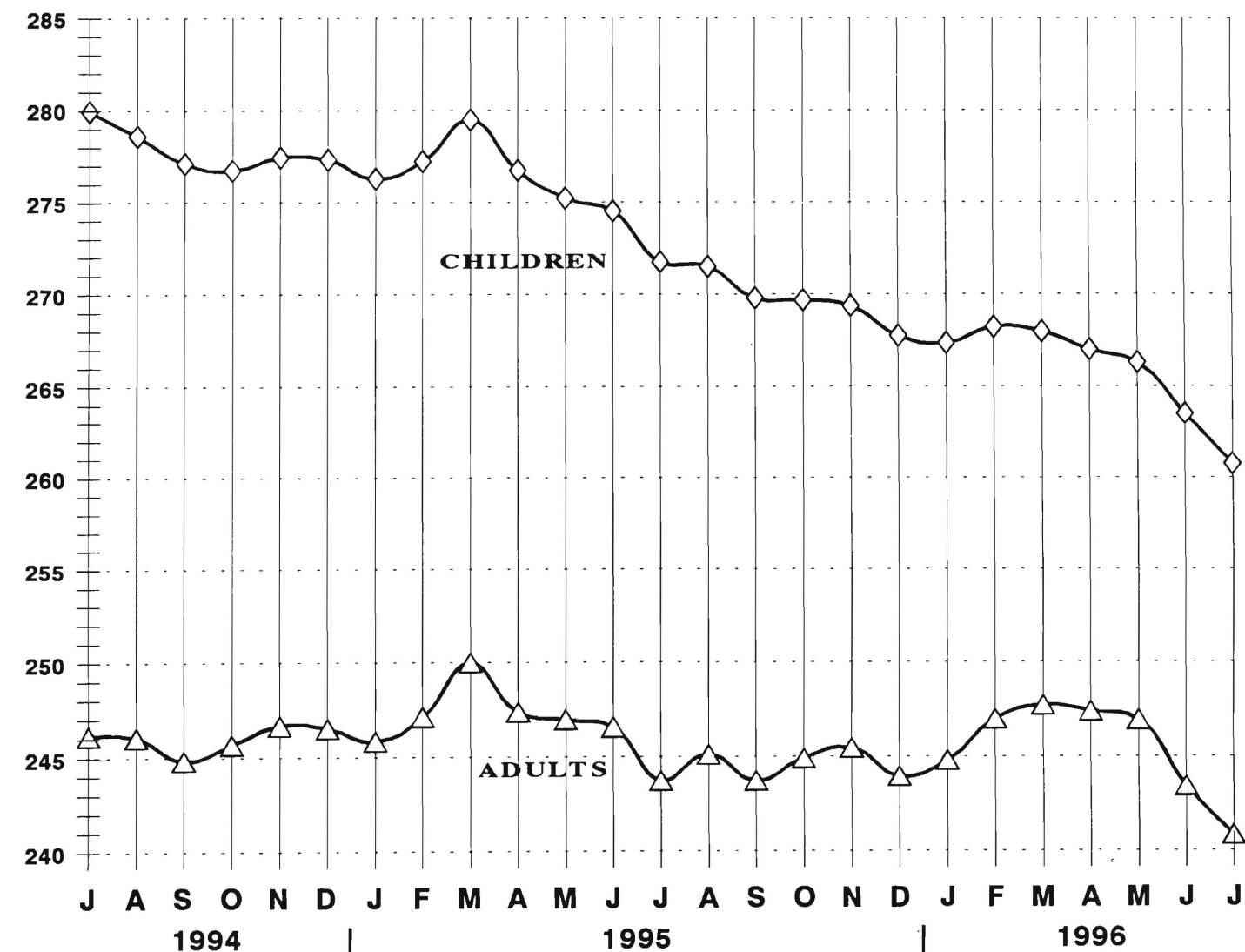
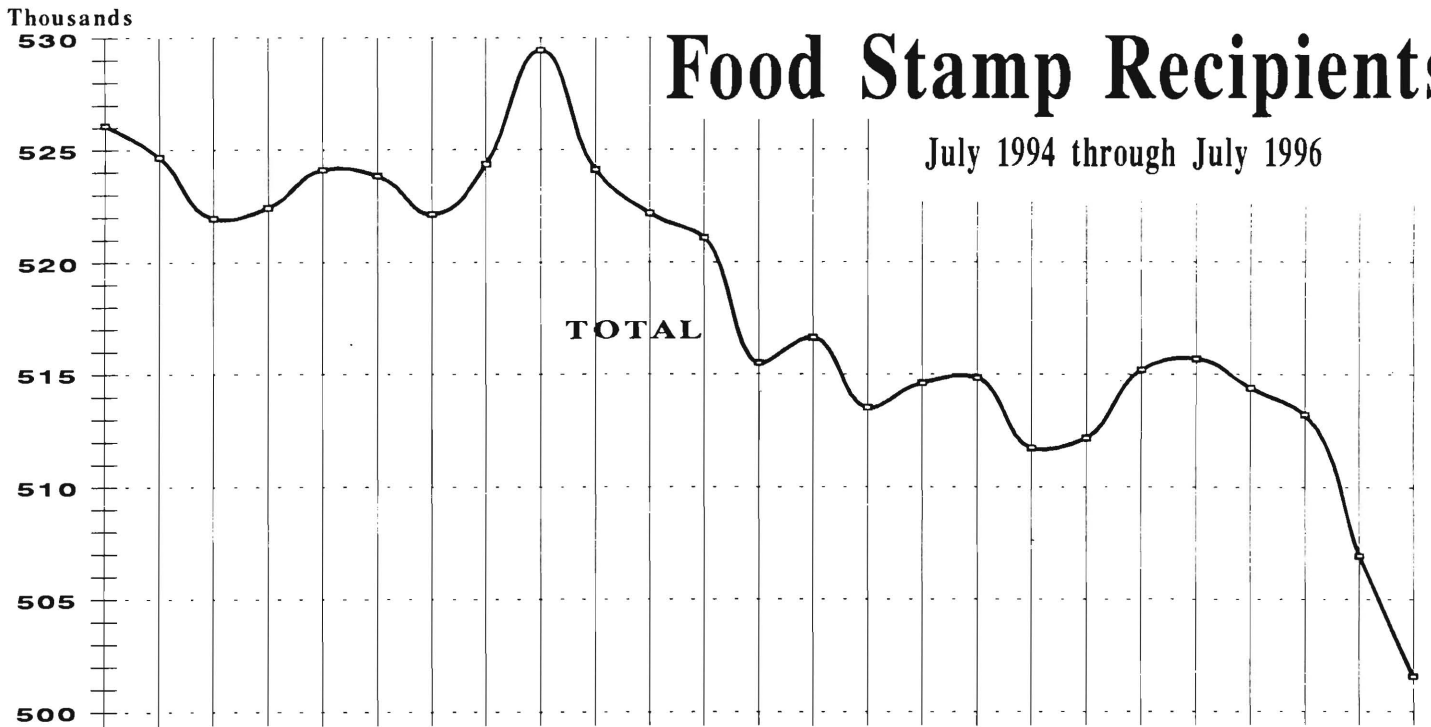
July 1994 through July 1996

Thousands



Food Stamp Recipients

July 1994 through July 1996



New Jersey Department of Human Services
Division of Family Development

TABLE 7

EMERGENCY ASSISTANCE Program for AFDC Recipients
State Summary

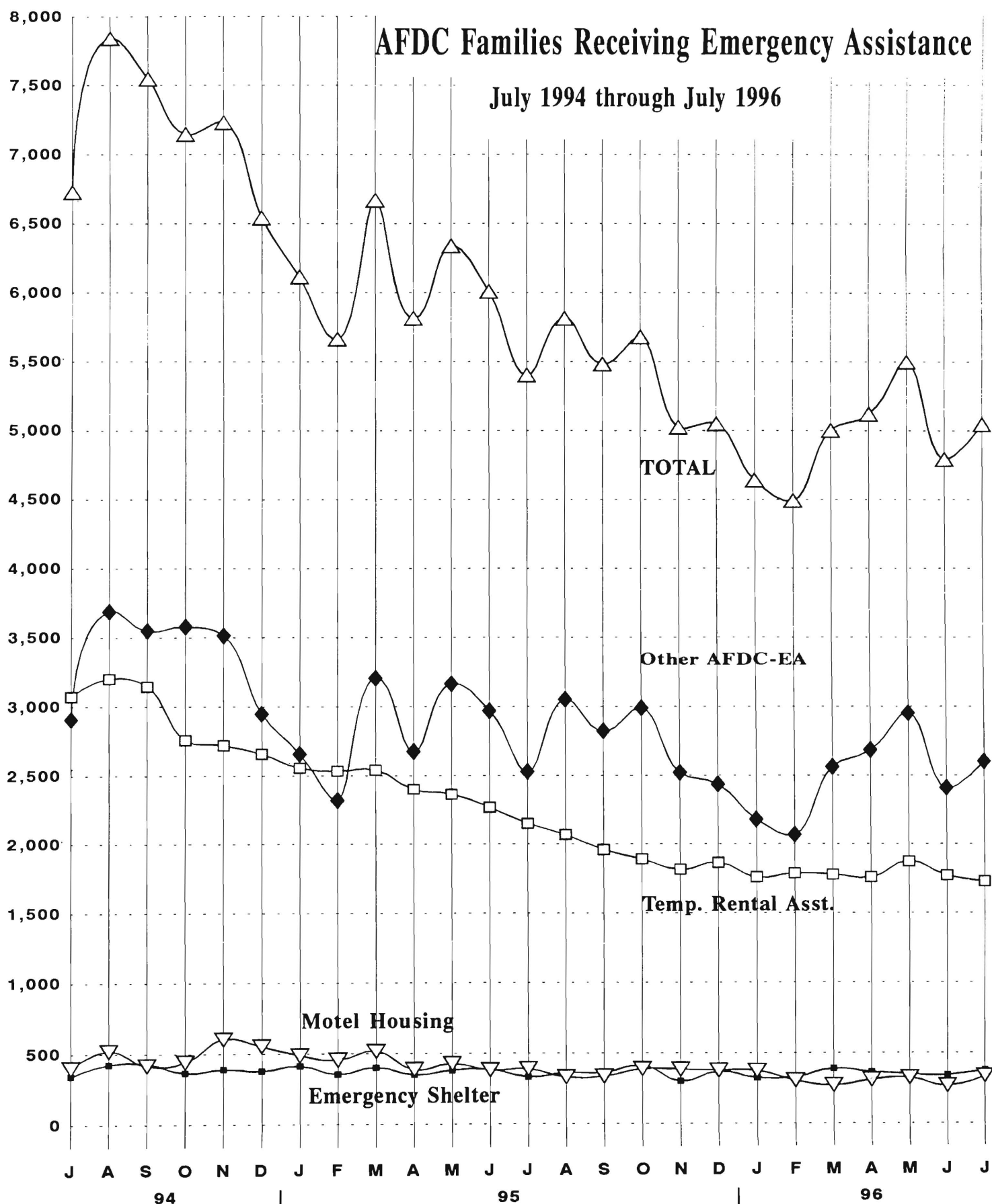
NUMBER OF ELIGIBLE FAMILIES RECEIVING EMERGENCY ASSISTANCE PAYMENTS
(UNDUPLICATED CASES)
JULY 1994 through JULY 1996

	Total families receiving EA	Temporary rental assist.	Motel Housing	Emergency Shelter	Other AFDC-EA
1994 JUL	6,727	3,075	400	344	2,908
AUG	7,840	3,204	520	426	3,690
SEP	7,545	3,147	418	430	3,550
OCT	7,147	2,759	442	366	3,580
NOV	7,231	2,720	604	391	3,516
DEC	6,540	2,658	554	379	2,949
Average (12 mos.)	7,326	3,218	468	379	3,260
1995 JAN	6,115	2,557	487	413	2,658
FEB	5,664	2,535	456	354	2,319
MAR	6,668	2,542	516	402	3,208
APR	5,815	2,402	387	351	2,675
MAY	6,338	2,364	427	381	3,166
JUN	6,007	2,268	382	387	2,970
JUL	5,402	2,149	389	334	2,530
AUG	5,813	2,068	331	362	3,052
SEP	5,482	1,958	336	364	2,824
OCT	5,678	1,891	388	410	2,989
NOV	5,024	1,816	384	302	2,522
DEC	5,048	1,864	377	369	2,438
Average	5,755	2,201	405	369	2,779
1996 JAN	4,639	1,761	374	325	2,179
FEB	4,490	1,788	305	330	2,067
MAR	5,001	1,779	270	388	2,564
APR	5,118	1,760	309	364	2,685
MAY	5,498	1,873	323	350	2,952
JUN	4,791	1,772	266	341	2,412
JUL	5,044	1,729	335	377	2,603
Average	4,940	1,780	312	354	2,495

GRAPH 7

AFDC Families Receiving Emergency Assistance

July 1994 through July 1996

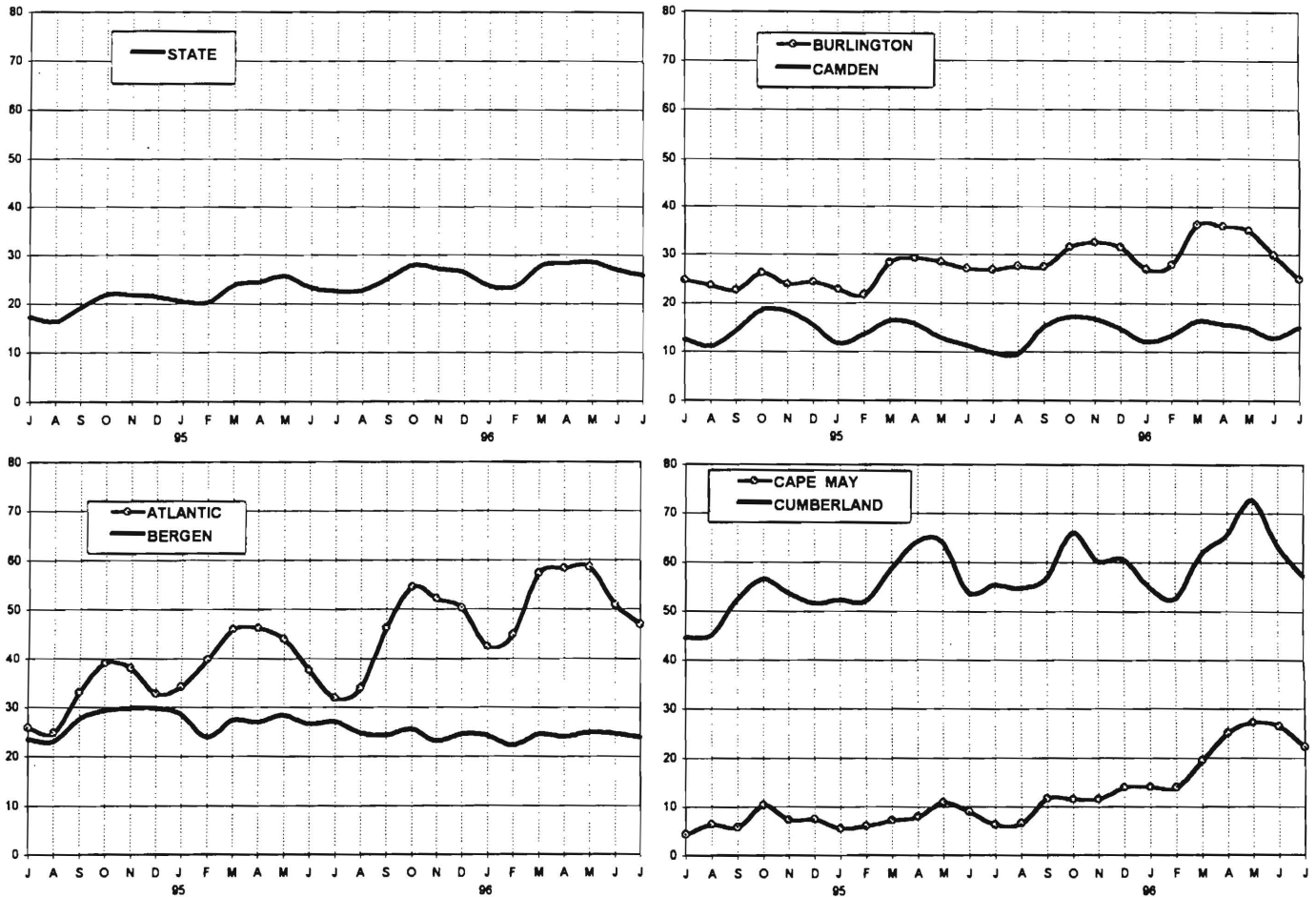


New Jersey Department of Human Services
Division of Family Development

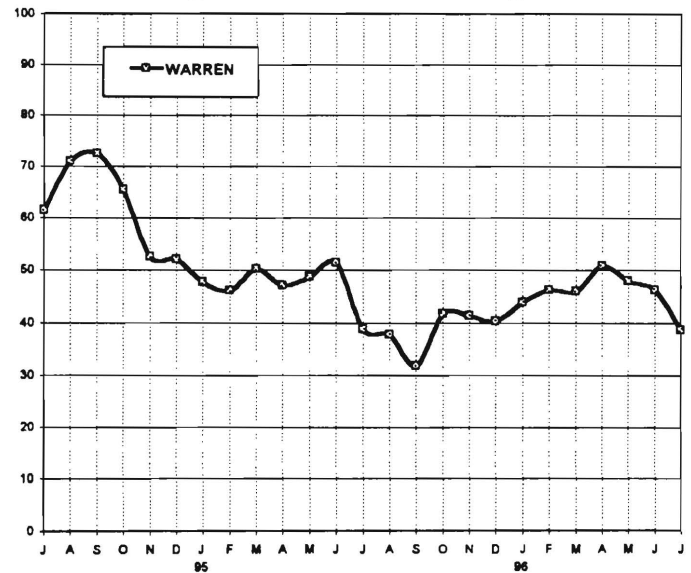
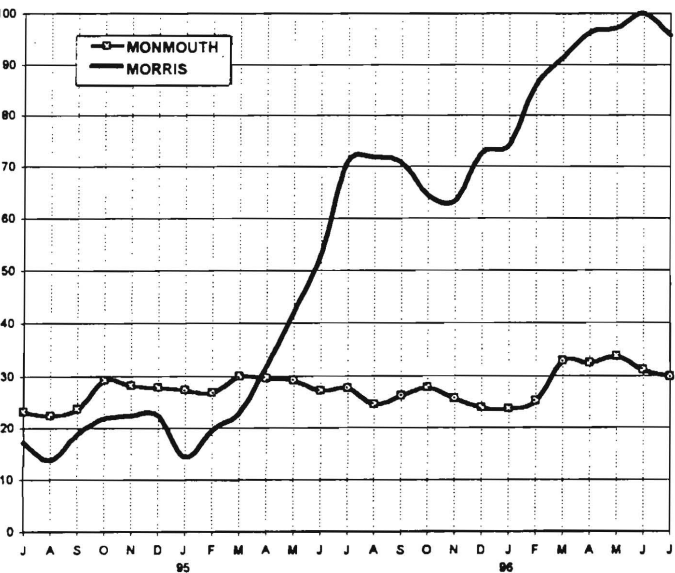
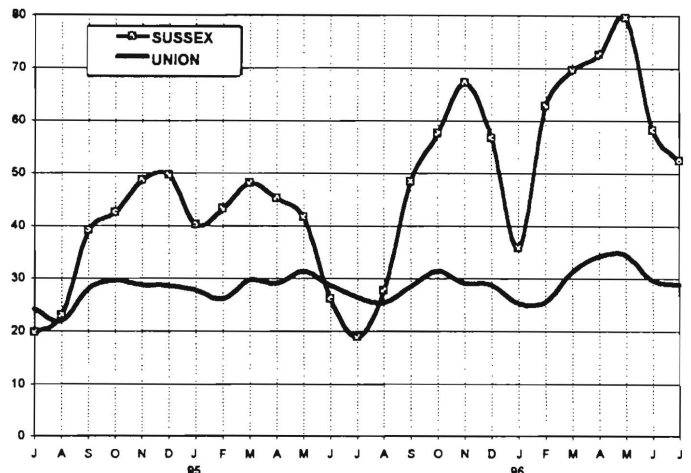
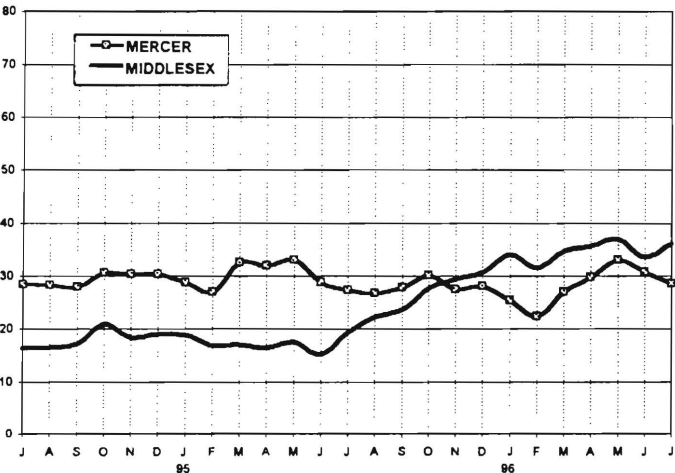
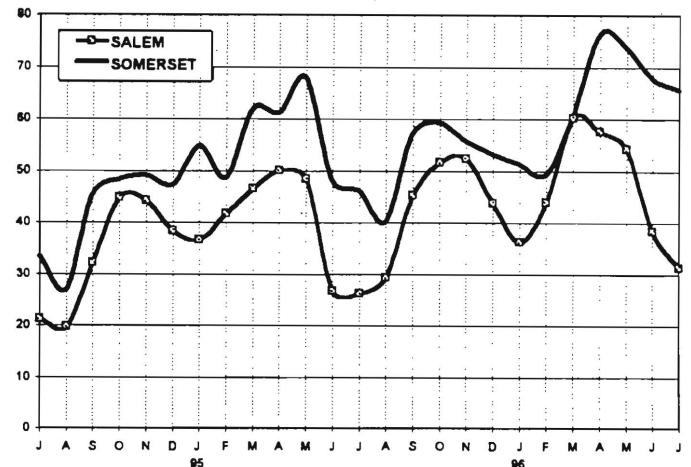
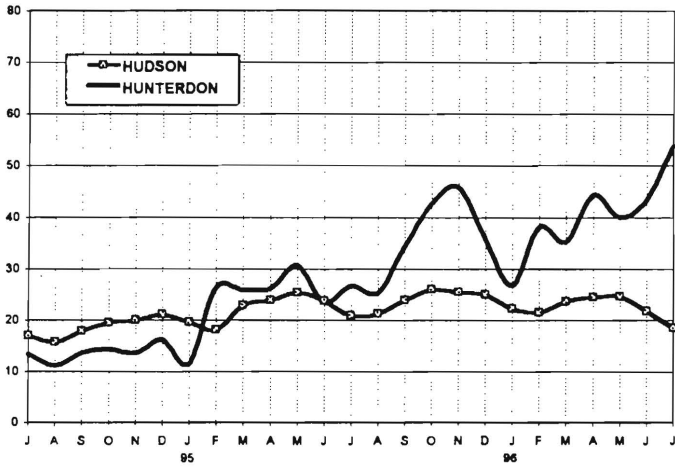
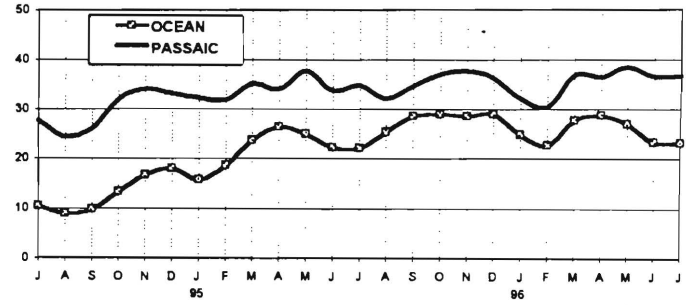
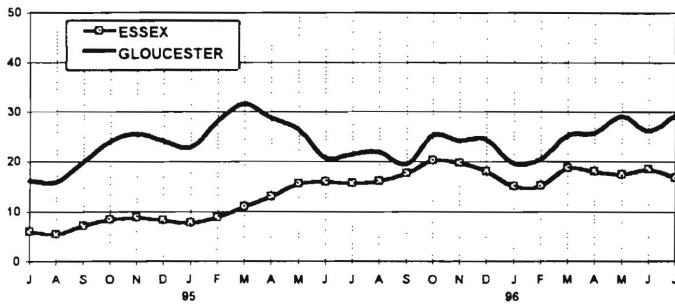
TABLE 8
JOBS/FDP PARTICIPATION RATES BY MONTH
(PERCENT)

	STATE	ATLANTIC	BERGEN	BURLINGTON	CAMDEN	CAPE MAY	CUMBERLAND	ESSEX	GLOUCESTER	HUDSON	HUNTERDON	MERCER	MIDDLESEX	MONMOUTH	MORRIS	OCEAN	PASSAIC	SALEM	SOMERSET	SUSSEX	UNION	WARREN
94 JUL	17.3	26.0	23.5	24.7	12.6	4.4	44.7	6.0	16.2	17.0	13.3	28.4	16.3	23.2	17.3	10.6	27.7	21.2	33.4	19.7	24.2	61.5
AUG	16.3	24.8	23.0	23.7	11.1	6.3	45.1	5.5	15.8	15.7	11.1	28.3	16.5	22.3	13.7	9.0	24.3	19.8	26.9	23.0	21.8	71.0
SEP	19.1	33.0	27.6	22.7	14.3	5.8	52.5	7.2	20.0	17.9	13.4	27.9	17.1	23.7	18.7	9.9	25.9	32.2	45.4	39.2	27.9	72.5
OCT	21.8	39.0	29.3	26.2	18.5	10.4	56.4	8.5	24.0	19.5	14.2	30.5	20.8	29.2	21.7	13.4	31.9	44.8	48.3	42.6	29.5	65.4
NOV	21.8	38.0	29.7	23.9	18.3	7.3	53.7	8.8	25.5	20.0	13.5	30.4	18.2	28.2	22.2	16.7	33.9	44.2	49.1	48.7	28.7	52.6
DEC	21.5	32.8	29.7	24.4	15.5	7.5	51.5	8.3	24.2	21.1	16.1	30.4	18.8	27.8	22.4	18.1	33.0	38.3	47.4	49.6	28.6	52.2
95 JAN	20.4	34.2	28.6	22.9	11.7	5.5	52.2	7.8	22.8	19.6	11.5	28.7	18.8	27.3	14.4	15.8	32.1	36.7	54.7	40.2	27.7	47.7
FEB	20.3	39.8	23.9	21.8	13.6	6.0	52.1	8.8	28.1	18.1	26.2	27.0	16.8	26.8	19.5	18.6	31.7	41.7	48.7	43.3	26.0	46.1
MAR	23.8	46.1	27.3	28.5	16.3	7.2	58.6	11.0	31.6	22.9	25.8	32.5	16.9	29.9	22.9	23.6	35.1	46.6	62.0	48.2	29.6	50.3
APR	24.5	46.3	26.9	29.2	15.7	7.9	64.1	13.0	28.7	23.8	26.1	31.9	16.3	29.6	31.9	26.4	33.9	50.0	61.3	45.3	28.9	47.2
MAY	25.7	44.0	28.3	28.6	12.9	10.9	64.0	15.7	26.4	25.4	30.6	33.1	17.4	29.1	42.0	25.0	37.7	48.4	68.0	41.7	31.4	48.7
JUN	23.3	37.7	26.5	27.1	11.3	9.0	53.8	16.0	20.7	23.8	23.5	28.7	15.1	27.2	52.9	22.3	33.6	26.7	48.1	26.1	28.6	51.5
JUL	22.5	31.9	27.0	26.9	9.8	6.3	55.3	15.8	21.5	20.8	26.6	27.3	19.2	27.7	71.0	22.1	34.7	26.3	46.1	19.0	26.3	38.9
AUG	22.6	33.9	24.8	27.7	9.5	6.5	54.6	16.2	22.0	21.2	25.2	26.7	22.0	24.5	71.7	25.4	32.0	29.4	40.3	27.7	25.2	37.8
SEP	25.2	46.4	24.2	27.6	15.1	11.7	56.9	17.7	19.5	23.8	34.3	27.8	23.6	26.2	70.7	28.6	34.5	45.3	57.3	48.4	28.4	32.0
OCT	27.9	54.6	25.5	31.5	17.1	11.4	65.9	20.2	25.3	28.0	42.7	30.1	27.5	27.8	64.4	28.9	37.0	51.7	59.3	57.5	31.4	41.7
NOV	27.2	52.2	23.1	32.5	16.8	11.5	60.2	19.7	24.1	25.4	45.8	27.4	29.3	25.6	63.3	28.6	37.6	52.4	55.8	67.2	29.0	41.3
DEC	26.4	50.3	24.5	31.5	14.8	13.9	60.6	18.1	24.4	25.0	35.9	28.0	30.6	23.9	72.6	28.9	36.2	43.9	53.2	56.7	28.8	40.3
96 JAN	23.7	42.5	24.3	27.1	12.0	14.1	55.1	15.2	19.7	22.2	26.7	25.3	34.0	23.6	74.1	24.8	32.1	36.3	51.3	35.8	25.2	43.8
FEB	23.5	44.9	22.2	27.9	13.3	13.9	52.6	15.3	20.5	21.5	38.0	22.3	31.5	25.1	85.9	22.6	30.4	43.9	49.4	62.9	25.5	46.3
MAR	27.8	57.3	24.5	36.2	16.2	19.4	61.5	18.7	25.1	23.5	35.2	26.9	34.6	32.8	91.4	27.6	36.8	60.2	60.6	69.6	31.3	45.9
APR	28.3	58.3	24.0	35.9	15.7	25.1	65.6	18.1	25.7	24.4	44.3	29.7	35.5	32.5	96.2	28.6	36.4	57.6	76.4	72.6	34.2	50.9
MAY	28.6	58.6	24.9	35.1	14.8	27.2	72.7	17.4	29.0	24.6	40.0	33.0	36.9	33.7	97.1	26.9	38.5	54.3	73.7	79.7	34.6	48.0
JUN	26.9	50.9	24.6	30.0	12.7	26.4	63.4	18.5	26.0	21.8	43.4	30.7	33.4	31.1	100.0	23.3	36.5	38.4	67.8	58.2	29.7	46.3
JUL	25.7	46.9	23.9	25.0	15.0	22.2	57.3	16.9	29.2	18.4	53.8	28.5	36.0	29.8	95.8	23.1	36.7	31.3	65.6	52.5	28.8	38.8

GRAPH 8
JOBS/FDP PARTICIPATION RATES (%)



GRAPH 8 (CONTINUED) JOBS/FDP PARTICIPATION RATES (%)



New Jersey Department of Human Services
Division of Family Development

TABLE 9
GENERAL ASSISTANCE Program
State Summary

**NUMBER OF EMPLOYABLE AND UNEMPLOYABLE RECIPIENTS
AND EMERGENCY ASSISTANCE PAYMENTS
DURING REPORT MONTH
April 1994 through April 1996**

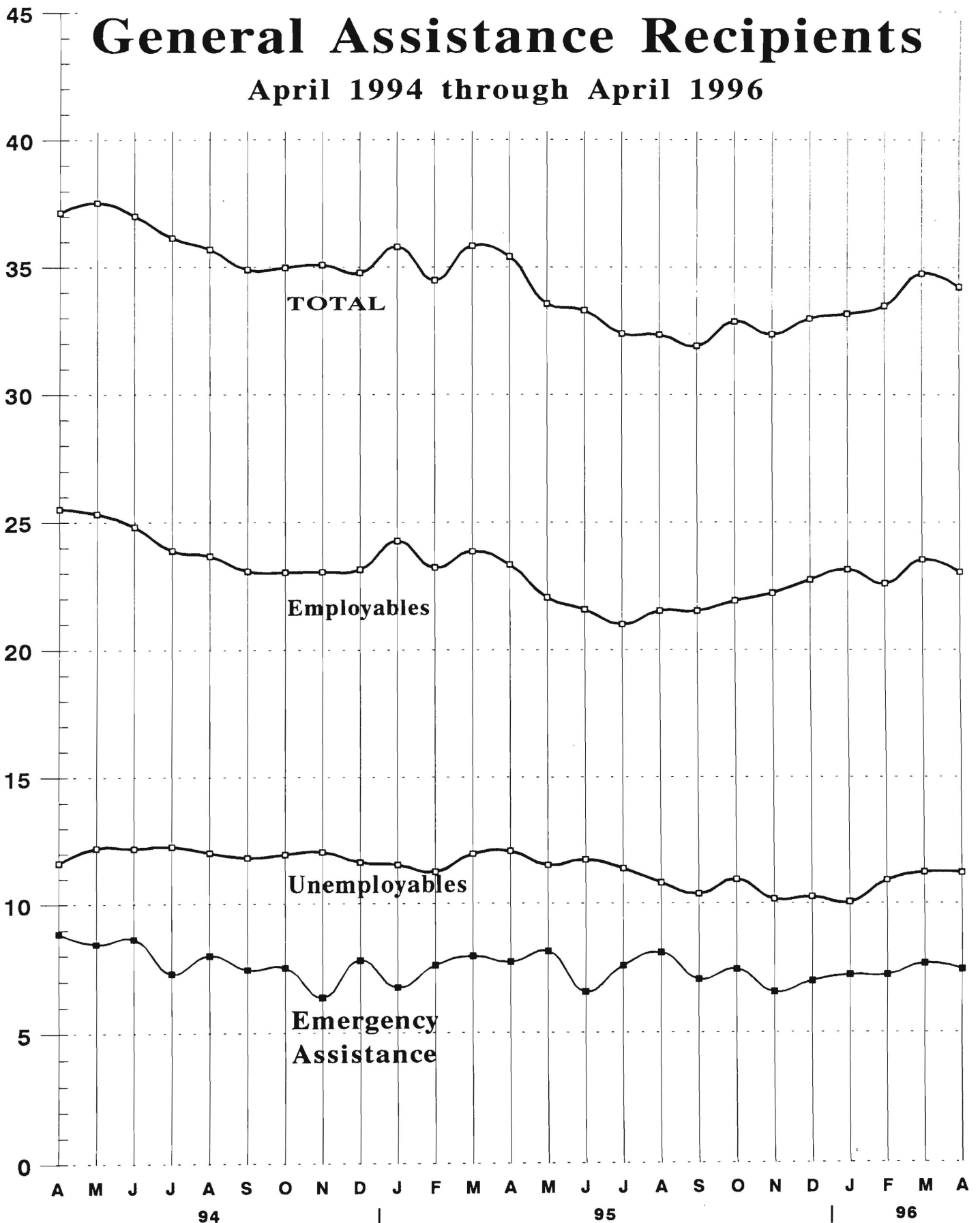
		<u>All Persons Aided</u>			<u>Emergency Assistance Payments</u>		
		<u>Employable</u>	<u>Unemployable</u>	<u>Total</u>	<u>Temporary Rental Assist</u>	<u>Other GA-EA</u>	<u>Total</u>
1994	Apr	25,512	11,629	37,141	5,219	3,628	8,847
	May	25,327	12,212	37,539	4,828	3,604	8,432
	Jun	24,814	12,190	37,004	4,587	4,035	8,622
	Jul	23,884	12,261	36,145	4,603	2,685	7,288
	Aug	23,671	12,018	35,689	4,489	3,488	7,977
	Sep	23,075	11,825	34,900	4,424	3,015	7,439
	Oct	23,031	11,950	34,981	4,472	3,032	7,504
	Nov	23,046	12,045	35,091	4,607	1,762	6,369
	Dec	23,142	11,642	34,784	4,657	3,137	7,794
AVERAGE (12 mos.)		24,374	11,813	36,187	4,651	3,181	7,832
1995	Jan	24,262	11,537	35,799	4,408	2,343	6,751
	Feb	23,219	11,264	34,483	4,851	2,748	7,599
	Mar	23,855	11,976	35,831	5,036	2,909	7,945
	Apr	23,337	12,082	35,419	4,833	2,887	7,720
	May	22,046	11,527	33,573	4,995	3,135	8,130
	Jun	21,575	11,738	33,313	4,423	2,146	6,569
	Jul	21,000	11,391	32,391	4,048	3,526	7,574
	Aug	21,526	10,829	32,355	4,174	3,909	8,083
	Sep	21,525	10,389	31,914	4,110	2,945	7,055
	Oct	21,913	10,959	32,872	3,939	3,497	7,436
	Nov	22,206	10,171	32,377	4,141	2,422	6,563
	Dec	22,732	10,268	33,000	4,086	2,902	6,988
AVERAGE		22,433	11,178	33,611	4,420	2,947	7,368
1996	Jan	23,140	10,054	33,194	4,421	2,803	7,224
	Feb	22,584	10,927	33,511	4,567	2,651	7,218
	Mar	23,528	11,243	34,771	4,472	3,185	7,657
	Apr	23,028	11,221	34,249	4,490	2,944	7,434
AVERAGE		23,070	10,861	33,931	4,488	2,896	7,383

Data Sources: NJ Division of Family Development, GA Fiscal Unit

Thousands

General Assistance Recipients

April 1994 through April 1996



New Jersey Department of Human Services
Division of Family Development

TABLE 10

CHILD SUPPORT AND PATERNITY COLLECTIONS

State Summary

\$1000's

COLLECTION SOURCE	State Fiscal Years			Percent Change	
	1994	1995	1996	1994-1995	1995-1996
AFDC & FOSTER CARE					
Federal Tax	\$15,255	\$15,664	\$19,081	2.7%	21.8%
State Tax	1,970	1,762	1,766	-10.6%	0.2%
Unempl. Ins. Ben.	4,975	3,867	5,327	-22.3%	37.8%
Income Withholding	43,219	45,262	42,742	4.7%	-5.6%
Other/Own Behalf	18,138	18,431	15,718	1.6%	-14.7%
From Other States	3,621	3,429	3,345	-5.3%	-2.5%
For Other States	5,269	6,873	7,524	30.5%	9.5%
TOTAL COLLECTION	\$92,447	\$95,289	95,502	3.1%	0.2%
NON-AFDC					
Federal Tax	\$6,547	\$6,822	\$9,237	4.2%	35.4%
State Tax	2,210	2,044	2,220	-7.5%	8.6%
Unempl. Ins. Ben.	15,110	13,338	18,050	-11.7%	35.3%
Income Withholding	214,405	251,694	254,997	17.4%	1.3%
Other/Own Behalf	144,715	156,899	132,531	8.4%	-15.5%
From Other States	19,969	20,835	20,559	4.3%	-1.3%
For Other States	20,015	27,338	28,262	36.6%	3.4%
TOTAL COLLECTION	\$422,970	\$478,969	465,854	13.2%	-2.7%
TOTAL					
Federal Tax	\$21,802	\$22,486	\$28,317	3.1%	25.9%
State Tax	4,179	3,806	3,986	-8.9%	4.7%
Unempl. Ins. Ben.	20,085	17,205	23,377	-14.3%	35.9%
Income Withholding	257,624	296,957	297,739	15.3%	0.3%
Other/Own Behalf	162,853	175,329	148,249	7.7%	-15.4%
From Other States	23,590	24,264	23,904	2.9%	-1.5%
For Other States	25,284	34,211	35,785	35.3%	4.6%
TOTAL COLLECTION	\$515,417	\$574,258	561,356	11.4%	-2.2%

Collection Source: Reflects Collections Recorded by County Probation Departments

Explanatory Notes

The Department of Human Services Division of Family Development provides basic income and an opportunity to achieve self-sufficiency for individuals and families served by the Division's programs. The Division provides leadership, direction and supervision to those public agencies responsible for administering those programs and plans for and develops policies to promote self-sufficiency.

AID TO FAMILIES WITH DEPENDENT CHILDREN (AFDC) - Financial assistance for dependent children and their natural or adoptive parents, or certain other relatives recognized as taking the place of a parent.

Regular AFDC (C Segment) - assistance when only one parent is in the home due to death or absence, or both parents are in the home but at least one is incapacitated.

Unemployed Parents (F Segment) - assistance when both parents are in the home, neither is incapacitated and the primary wage earner meets the federally defined criteria for unemployment.

State AFDC (N Segment) - assistance when both parents are in the home, neither is incapacitated, and the primary wage earner does not meet the federal definition of unemployment.

Medicaid Only - families no longer receiving AFDC financial assistance but remaining eligible for Medicaid under applicable provisions which extend coverage beyond period of AFDC assistance.

FOOD STAMP PROGRAM (FS) - Authorized by Congress as a nutritional supplement program to provide low income households with more food of greater variety and better nutrition. Program eligibility is based on household income, resources, and expenses for medical, shelter, and dependent care. CWA staff refer certain recipients to the New Jersey Department of Labor for participation in the Food Stamp Employment and Training Program.

EMERGENCY ASSISTANCE (EA) - Payments to those eligible for AFDC, Supplemental Security Income or General Assistance, authorized during the 30 consecutive days immediately following the emergency (defined as a substantial loss of shelter, food, clothing, or household furnishings by fire, flood or other similar disaster) or if the eligible individual or family is in an imminent or actual state of homelessness.

JOBS/FDP

JOB OPPORTUNITY AND BASIC SKILLS PROGRAM (JOBS) - Federally mandated work/training program for recipients of AFDC established by the Family Support Act of 1988 under Part F of Title IV of the Social Security Act.

FAMILY DEVELOPMENT PROGRAM (FDP) - Reform legislation enacted by the State Legislature in January 1992 to: build, strengthen, and support the family unit; encourage family formation; reduce the long-term aspects of welfare dependency; look to the needs of the family unit as a whole; emphasize education and training for all family members; maximize use of educational, training and employment resources; and develop genuine private sector job opportunities.

SNAPSHOT OF ACTIVITY AT POINT IN TIME - Status of activities as of the end of the month:

Total Non-Exempt JOBS/FDP Recipients - Calculation of the number of mandatory IV-F individuals (FAMIS report # FB304).

Employment Directed Activities (EDA) - From Activities Summary Report (OMEGA report # RM064). Unduplicated count of persons participating in **Training, Education, or Job Search**.

Participants in EDA, Receiving Support Services - From Issuance Disbursement Summary (OMEGA report # RM703). Total number of active participants who show receipt of **Training Related Expenses or Child Care**.

Participation Rate (JOBS/FDP) - Federally mandated calculation method, dividing the number of participants whose combined and averaged weekly hours of participation in qualifying activities equals or exceeds 20 hours per week by the total number of non-exempt IV-F recipients. As of the end of the month.

ACTIVITY FOR THE MONTH - Number of participants with the indicated activity during the month:

Participants with First Case Management Interview - From Activities Summary Report (OMEGA report # RM064).

Number of Persons Employed This Month, Still Receiving AFDC - From Activities Summary Report (OMEGA report # RM064).

Number of Persons Closed on FAMIS Due to Earnings - From FAMIS report # FM463.

Post AFDC and Receiving Child Care - Persons no longer in receipt of AFDC, but still receiving child care. From Issuance Disbursement Summary (OMEGA report # RM703).

New Jersey Department of Human Services
Division of Family Development

TABLE 11a
GENERAL ASSISTANCE PROGRAM
EMPLOYABLE AND UNEMPLOYABLE RECIPIENTS
AND EMERGENCY ASSISTANCE PAYMENTS,
COUNTIES AND 21 LARGEST MUNICIPALITIES
March 1996

County/ Municipality	Total Persons Aided			Emergency Assistance Payments		
	Employable	Unemployable	Total	Temporary Rental Assist.	Other GA-EA	Total
ATLANTIC	1,274	540	1,814	78	59	137
BERGEN	582	458	1,040	260	75	335
BURLINGTON	545	375	920	194	138	332
CAMDEN	2,023	1,109	3,132	348	241	589
CAPE MAY	185	83	268	38	25	63
CUMBERLAND	424	207	631	8	15	23
ESSEX	7,656	2,631	10,287	683	1,578	2,261
GLOUCESTER	148	159	307	22	9	31
HUDSON	1,212	1,178	2,390	198	28	226
HUNTERDON	48	55	103	25	19	44
MERCER	2,180	934	3,114	316	299	615
MIDDLESEX	561	532	1,093	108	43	151
MONMOUTH	875	691	1,566	399	89	488
MORRIS	142	209	351	44	33	77
OCEAN	754	395	1,149	422	207	629
PASSAIC	2,578	611	3,189	427	197	624
SALEM	134	69	203	23	17	40
SOMERSET	108	96	204	39	13	52
SUSSEX	40	21	61	23	3	26
UNION	1,993	838	2,831	795	92	887
WARREN	66	52	118	22	5	27
TOTAL NJ	23,528	11,243	34,771	4,472	3,185	7,657
Atlantic City	1,016	320	1,336	64	46	110
Mount Holly	156	87	243	51	83	134
Camden	1,627	724	2,351	231	178	409
Vineland	235	121	356	4	10	14
East Orange	592	459	1,051	270	60	330
Irvington	303	71	374	55	46	101
Montclair	190	76	266	49	18	67
Newark	6,029	1,807	7,836	221	1,442	1,663
Orange	417	60	477	66	2	68
Bayonne	138	51	189	3	0	3
Hoboken	140	115	255	26	0	26
Jersey City	700	493	1,193	96	13	109
Trenton	2,043	828	2,871	296	258	554
Perth Amboy	150	119	269	18	7	25
Asbury Park	249	102	351	115	16	131
Long Branch	231	112	343	87	29	116
Lakewood	318	129	447	211	51	262
Passaic	760	223	983	226	63	289
Paterson	1,677	261	1,938	131	118	249
Elizabeth	1,278	461	1,739	617	31	648
Plainfield	294	124	418	43	4	47
Total	18,543	6,743	25,286	2,880	2,475	5,355

Source: NJ Division of Family Development, GA Fiscal Unit

New Jersey Department of Human Services
Division of Family Development

TABLE 11b
GENERAL ASSISTANCE PROGRAM
EMPLOYABLE AND UNEMPLOYABLE RECIPIENTS
AND EMERGENCY ASSISTANCE PAYMENTS,
COUNTIES AND 21 LARGEST MUNICIPALITIES
April 1996

County/ Municipality	Total Persons Aided			Emergency Assistance Payments		
	Employable	Unemployable	Total	Temporary Rental Assist.	Other GA-EA	Total
ATLANTIC	1,220	565	1,785	94	25	119
BERGEN	546	474	1,020	256	101	357
BURLINGTON	496	367	863	192	107	299
CAMDEN	2,141	1,092	3,233	326	238	564
CAPE MAY	161	84	245	30	31	61
CUMBERLAND	393	176	569	6	14	20
ESSEX	7,728	2,649	10,377	728	1,348	2,076
GLOUCESTER	154	166	320	22	9	31
HUDSON	1,221	1,178	2,399	190	24	214
HUNTERDON	39	57	96	20	20	40
MERCER	1,966	828	2,794	366	380	746
MIDDLESEX	545	541	1,086	108	41	149
MONMOUTH	780	697	1,477	390	64	454
MORRIS	136	221	357	40	16	56
OCEAN	735	388	1,123	418	167	585
PASSAIC	2,607	633	3,240	447	194	641
SALEM	122	67	189	18	20	38
SOMERSET	93	104	197	38	13	51
SUSSEX	54	40	94	25	3	28
UNION	1,830	832	2,662	751	126	877
WARREN	61	62	123	25	3	28
TOTAL NJ	23,028	11,221	34,249	4,490	2,944	7,434

Atlantic	984	346	1,330	72	13	85
Mount Holly	152	81	233	42	61	103
Camden	1,770	720	2,490	210	166	376
Vineland	216	94	310	3	13	16
East Orange	550	438	988	269	37	306
Irvington	273	83	356	42	12	54
Montclair	184	75	259	43	9	52
Newark	6,148	1,831	7,979	290	1,276	1,566
Orange	436	60	496	62	1	63
Bayonne	133	49	182	7	1	8
Hoboken	139	109	248	23	0	23
Jersey	709	479	1,188	91	7	98
Trenton	1,837	716	2,553	342	347	689
Perth Amboy	138	124	262	17	6	23
Asbury Park	239	93	332	119	0	119
Long Branch	212	117	329	87	20	107
Lakewood	325	116	441	233	41	274
Passaic	741	225	966	231	50	281
Paterson	1,728	278	2,006	149	124	273
Elizabeth	1,156	456	1,612	569	75	644
Plainfield	274	126	400	45	1	46
Total	18,344	6,616	24,960	2,946	2,260	5,206

Source: NJ Division of Family Development, GA Fiscal Unit