

July 2022 Traffic Report

AVIATION DEPARTMENT (Data As Of 9/29/2022 2:50:39 PM)

REGION

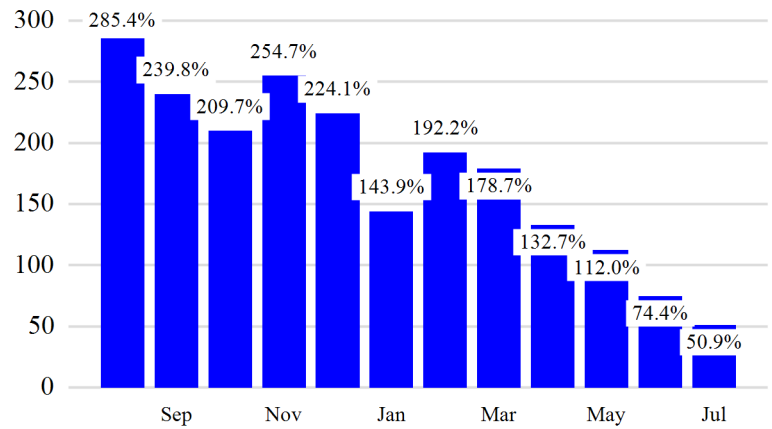


Revenue Passengers

	Curr Month	% Change
	12,280,743	50.9% ▲
Domestic	7,986,735	37.3%
International	4,294,008	85.2%
Non-Revenue	332,562	51.4%

Load Factors	Curr Month	Avg Load Factor
Domestic	82.1%	83.4%
International	86.1%	

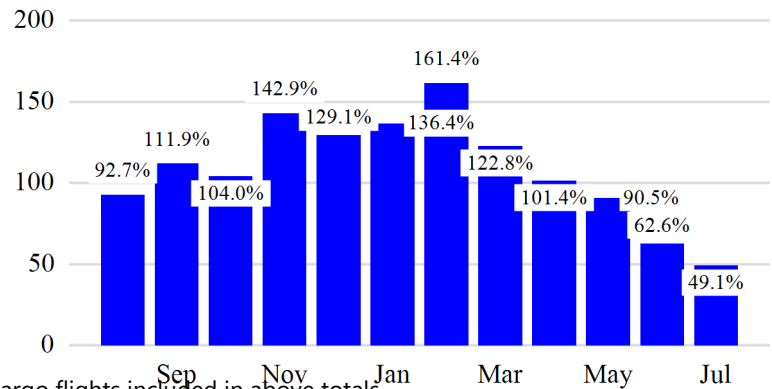
Year over Year % Change in Revenue Passengers - 12 Months



Total Flights

	Curr Month	% Change
	105,003	49.2% ▲
Excl GA	100,948	49.1% ▲
Domestic	76,895	49.8%
International	24,053	46.8%
Gen Aviation	4,055	50.9%
Cargo Flights*	3,153	-10.1%

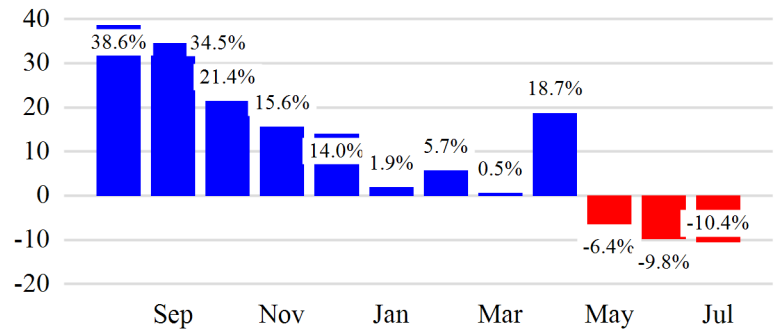
Year over Year % Change in Total Flights (Excl GA) - 12 Months



Cargo (Short Tons)

	Curr Month	% Change
	183,116	-10.4% ▼
Domestic	78,729	-11.3%
International	104,388	-9.7%
Mail	11,390	-2.3%

Year over Year % Change in Cargo - 12 Months



Top 5 Declines in Revenue Passengers by Airline

Airline	Pax Decline	% Decline
FRONTIER AIRLINES	(70,267)	-60.0%
Avianca El Salvador	(7,671)	-31.0%
EASTERN	(7,384)	-96.0%
COPA AIRLINES	(2,767)	-8.0%
VIVA AEROBUS	(232)	-2.0%

Top 5 Increases in Revenue Passengers by Airline

Airline	Pax Increase	% Increase
UNITED	1,006,449	54.0%
AMERICAN	676,879	68.0%
DELTA	612,629	30.0%
JETBLUE AIRWAYS	352,136	21.0%
SOUTHWEST AIRLINES	134,314	91.0%

Airport Summary Statistics

JFK Summary

	Current Month	YoY %
Total Revenue Pax	5,517,761	54.0
Total Flights Including GA	39,197	37.0
Total Cargo (Short Tons)	123,248	-11.4

EWR Summary

	Current Month	YoY %
Total Revenue Pax	4,036,205	34.0
Total Flights Including GA	33,519	36.0
Total Cargo (Short Tons)	57,381	-6.5

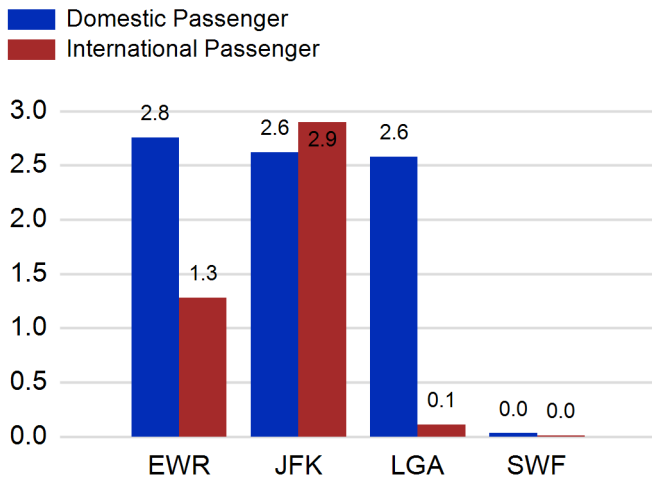
LGA Summary

	Current Month	YoY %
Total Revenue Pax	2,686,619	74.0
Total Flights Including GA	29,222	90.0
Total Cargo (Short Tons)	516	1.5

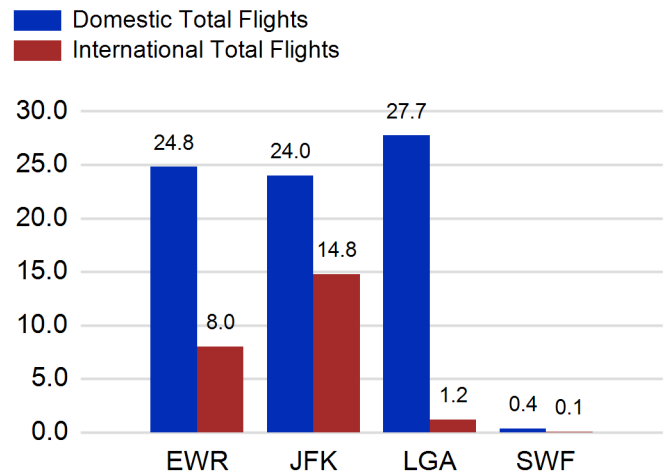
SWF Summary

	Current Month	YoY %
Total Revenue Pax	40,158	124.0
Total Flights Including GA	3,065	53.0
Total Cargo (Short Tons)	1,971	-42.9

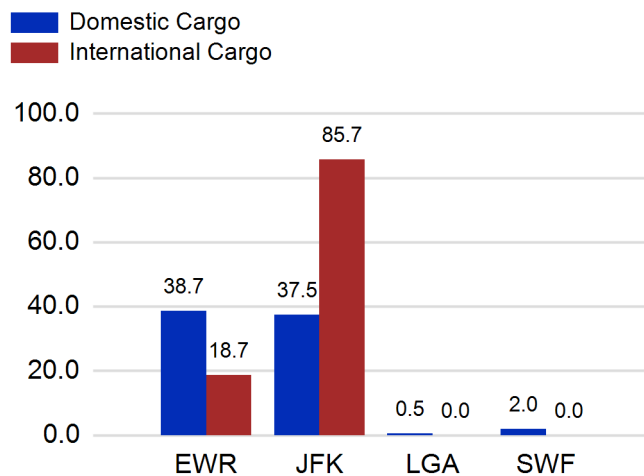
Total Passengers by Airport (Millions)



Total Flights by Airport (Thousands)



Total Cargo by Airport (Thousands of Short Tons)



12 Months Ending Passenger & Freight Statistics

Top 20 Airlines Ranking by Passengers & Freight: 12 Months Ending Jul 2022

Airline Name	Domestic	International	Total Pax	% of Tot	Airline Name	Short Tons	% of Tot
UNITED	21,994,735	6,410,526	28,405,261	25.30%	FEDERAL EXPRESS	431,142	18.01%
DELTA	21,838,697	3,881,328	25,720,025	22.91%	UNITED	213,289	8.91%
JETBLUE AIRWAYS	13,932,131	5,275,251	19,207,382	17.11%	UNITED PARCEL	211,347	8.83%
AMERICAN	13,102,332	2,422,575	15,524,907	13.83%	DELTA	100,245	4.19%
SPIRIT AIRLINES	3,546,006	0	3,546,006	3.16%	AMERICAN	92,113	3.85%
SOUTHWEST AIRLINES	2,458,254	0	2,458,254	2.19%	KALITTA AIR LLC	86,134	3.60%
ALASKA AIRLINES	1,902,381	0	1,902,381	1.69%	ATLAS AIR	68,651	2.87%
AIR CANADA	0	891,166	891,166	0.79%	CARGOLUX AIRLINES	63,787	2.66%
EMIRATES AIRLINES	0	829,888	829,888	0.74%	AIR TRANSPORT INT'L.(BAX Inc.)	61,511	2.57%
BRITISH AIRWAYS	0	815,938	815,938	0.73%	KOREAN	60,857	2.54%
FRONTIER AIRLINES	770,501	37,801	808,302	0.72%	ITA (formerly ALITALIA)	57,314	2.39%
AIR FRANCE	0	740,257	740,257	0.66%	ABX AIR INC	56,147	2.35%
TURKISH AIR	0	662,075	662,075	0.59%	CHINA AIRLINES (CAL)	51,701	2.16%
Avianca Costa Rica	0	609,545	609,545	0.54%	CATHAY PACIFIC	36,435	1.52%
LUFTHANSA CARGO	0	609,510	609,510	0.54%	LUFTHANSA CARGO	34,809	1.45%
VIRGIN ATLANTIC	0	581,614	581,614	0.52%	EVA	31,519	1.32%
QATAR AIRWAYS	0	439,014	439,014	0.39%	TURKISH AIR	31,300	1.31%
AER LINGUS	0	416,301	416,301	0.37%	SAUDI ARABIAN AIRLINES	30,105	1.26%
EL AL	0	402,216	402,216	0.36%	VIRGIN ATLANTIC	29,108	1.22%
TAM BRAZILIAN AIRLINES	0	388,301	388,301	0.35%	EUROPEAN AIR TRANSPORT	27,712	1.16%

Passengers & Freight by Market - 12 Months Ending

Market	Passengers	Freight (Short Tons)
TRANSATLANTIC	16,856,354	938,356
CANADA	1,613,790	2,677
CARIBBEAN + BERMUDA	7,242,835	15,688
CENTRAL AND SOUTH AMERICA	3,693,028	48,475
DOMESTIC	77,686,035	1,021,968
MEXICO	2,119,736	9,812
TRANSPACIFIC	688,890	348,145
PUERTO RICO	2,376,094	9,011

Additional Data

Airline Schedules (ADI): Non-Stop Destinations

	Region	Flights (Daily)	Cities
Domestic	Domestic	2464.3	112
	Puerto Rico	36.2	3
	Total	2,500.5	115.00
International	Canada	137.9	7
	Caribbean & Bermuda	158.1	23
	Central & South America	76.0	17
	Mexico	43.0	5
	Trans-Atlantic	352.2	63
	Trans-Pacific	20.6	8
	Total	787.8	123.00
Total	3,288.3	238.00	

Airline Schedules (ADI): Carriers & Aircraft Type

	Aircraft Type	Flights (Daily)	Carriers
Domestic	Commuter	990.0	4
	General Aviation	2.0	1
	Narrow Body	1441.6	10
	Wide Body	66.9	4
Total	Total	2,500.5	19.00
International	Commuter	108.4	5
	Narrow Body	328.7	22
	Wide Body	350.7	52
	Total	Total	787.8
Total	Total	3,288.3	98.00

Passenger Demographics (ACI ASQ Surveys - 2021)

Connect		Trip Type		Gender	
Local Origin/Destination	78.6%	Business	14.0%	M	49.6%
Connecting	21.4%	Leisure	86.0%	F	50.4%
Transport Mode		Annual Flights		Residency	
Bus/Shuttle	4.7%	1-2	61.5%	United States	81.0%
Other	18.7%	3-5	24.9%	Other	19.0%
Private/Company Car	37.5%	6-10	9.0%		
Rail/Subway	7.3%	11-20	2.8%		
Rental Car	4.6%	21+	1.8%		
Taxi/Limo	27.2%				

Ground Transportation

	Curr Month	% Change		Curr Month	% Change
<i>Paid Parked Cars</i>	463,622	69.6	<i>Total Air Train Passengers</i>	2,580,378	52.6
<i>GTC Bookings</i>	0		<i>Paid Howard Beach Passengers</i>	134,408	72.8
<i>Airport Coach Passengers</i>	32,465	93.3	<i>Paid Jamaica Passengers</i>	451,874	56.8
<i>Taxis Dispatched</i>	356,985	38.9	<i>Paid EWR Passengers</i>	184,804	32.6
			<i>On-Airport (Unpaid) Passengers</i>	1,809,292	52.6

Airlines for American Carriers (USA)

	Curr Month	% Change
<i>Freight:revenue ton miles (000)</i>	0	

Regional Airports: Other

	Curr Month	% Change
<i>TEB flight movements</i>	8,193	-13.6
<i>ISP Total passengers</i>	106,036	-13.7
<i>HPN Total passengers</i>	157,556	65.4