

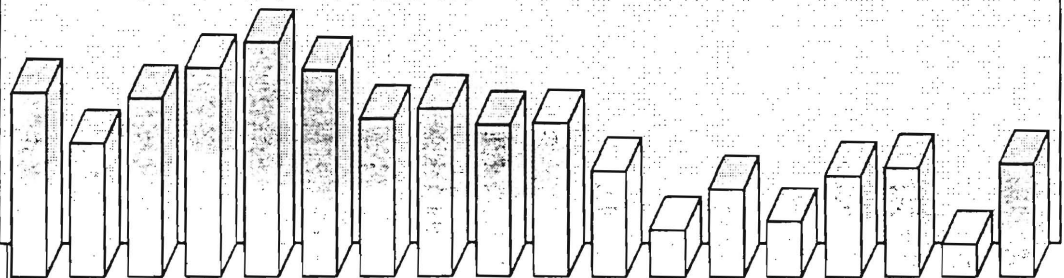
974.905  
044.4  
c-2

*State of New Jersey  
Department of Human Services  
Division of Family Development*

# CURRENT PROGRAM STATISTICS

*March 1995*

*Karen Highsmith, Acting Director*



**State of New Jersey**  
Department of Human Services  
Division of Family Development

**CURRENT PROGRAM STATISTICS**  
March 1995

TABLE OF CONTENTS

	<b>Page</b>
<b>Highlights of Current Program Statistics .....</b>	<b>1-3</b>
<b>Statistics by County, March 1995</b>	
Table 1 AFDC.....	4
Graph 1 Current AFDC Families .....	5
Table 2 Food Stamp Program.....	6
Graph 2 Current Food Stamp Households/Persons .....	7
Table 3 Emergency Assistance Program .....	8
Graph 3 Current Families Receiving Emergency Assistance.....	9
Table 4 Family Development Program .....	10
<b>State Summary, 1993 - 1995</b>	
Table 5 AFDC, March 1993 - March 1995.....	11
Graph 4 Families Receiving AFDC, 3/93-3/95 .....	12
Table 6 Food Stamp Program, March 1993 - March 1995.....	13
Graph 5 Food Stamp Households, 3/93-3/95 .....	14
Graph 6 Food Stamp Recipients, 3/93-3/95 .....	15
Table 7 Emergency Assistance Program, Mar. 1993 - Mar. 1995.....	16
Graph 7 AFDC Families Receiving Emergency Assistance 3/93-3/95.....	17
Table 8 JOBS/FDP Participation Rates, by County and Statewide, October 1993 - March 1995 .....	18
Graph 8 JOBS/FDP Participation Rates, 7/93-3/95 .....	19
Table 9 General Assistance, January 1993 -September 1994.....	20
Graph 9 General Assistance Recipients 1/93 - 9/94.....	21
Table 10 Child Support and Paternity 1993-1995 .....	22
<b>Explanatory Notes .....</b>	<b>23-24</b>
<b>Supplement</b>	
Table 11 General Assistance Recipients by County and Municipality, September 1994 .....	25
(Table to be issued as available)	

### **Highlights of Current Program Statistics**

#### **AFDC (Tables 1 and 5, Graphs 1 and 4)**

121,096 eligible families in New Jersey were receiving AFDC as of the end of March 1995.

108,800 were single head of household families (Regular AFDC, C segment).

Among two-parent families, Unemployed Parents (F Segment) accounted for 3900, and State AFDC (N Segment) for 3300. There were almost 5100 Medicaid Only families.

By County, the largest numbers were in Essex with about 30,300 families, Hudson with over 19,000, and Camden County with 13,700. They accounted for 52 percent of all AFDC families.

The other counties ranged from 212 families in Hunterdon to 7,800 in Passaic County.

The number of eligible families in March 1995 is 300 less than February. There has been a decline every month since the May/June 1994 peak of over 124,600, for a drop of more than 3500 or 2.8 percent.

Regular AFDC (C segment) peaked at nearly 111,800 in June 1994 then declined every month afterward, for a total drop of about 3000 by March 1995.

F segment families declined from over 4500 in May 1994 to less than 3800 by December 1994. The number was about 100 higher in the first three months of 1995.

State AFDC (N segment) grew steadily from 2650 families in February 1993 to 3483 by May 1994 (almost one third), and has declined by only about 200 families since then.

The Medicaid Only group has hovered around 5000 families over the last two years.

#### **FOOD STAMP PROGRAM (Tables 2 and 6, Graphs 2, 5, and 6)**

At the end of March 1995, 224,618 households were participating in the Food Stamp Program.

About 114,300 were AFDC households and 110,300 were Other Low Income households.

About 48 percent of all Food Stamp Households are in Essex (55,091), Hudson (29,656) and Camden (22,226) Counties.

These households included about 529,500 persons, 250,000 adults and nearly 280,000 children.

In seven counties (Bergen, Hunterdon, Monmouth, Morris, Somerset, Sussex, and Warren) the number of adults exceeds the number of children in Food Stamp households.

Food Stamp households in New Jersey remained close to 215,000 families between March 1993 and February 1994, jumped to over 220,000 families in March 1994, and remained above that amount every month since. The March 1995 level approached 225,000 and was about 2300 more than February.

The convergence of the numbers of AFDC(FS) households and Other Low Income households is accelerating. There were 113,000 AFDC(FS) households in March 1993 and only 1300 more in March 1995. There were 100,000 Other Low Income households in March 1993, and 10,000 more in March 1995.

Major increases in Total Recipients occurred between February and March in each of the last three years, growing from about 508,000 to 516,000 in 1993, from about 520,000 to almost 531,000 in 1994, and from 524,000 to 529,000 in 1995.

Recipient adults have increased much more than recipient children. Adults increased from about 239,000 in March 1993 to about 250,000 in March 1995, the highest level in the two-year period. Recipient children barely changed, remaining around 277,000 during the period with a peak of nearly 283,000 in March 1994, and ending under 280,000 in March 1995.

#### **EMERGENCY ASSISTANCE (Tables 3 and 7, Graphs 3 and 7)**

At the end of March 1995 more than 7000 eligible AFDC families were receiving Emergency Assistance (EA) in New Jersey.

3645 families were receiving Temporary Rental Assistance (TRA).

There were 570 motel placements and 418 emergency shelter placements.

All other AFDC-EA accounted for 2429 families, including either one-time benefits such as back rent, back utilities, security deposits, furnishings, and clothing and food allowance, or shared or transitional housing.

2466 families in Essex County received EA, including 1920 provided TRA. Mercer and Middlesex each had 731 EA recipient families, while Passaic had 658 (mostly "Other EA"), and Bergen had 433. All other counties had between 18 and 349 with nine under 100.

AFDC families receiving Emergency Assistance reached almost 8500 in May 1993, and have generally continued declining, with some fluctuations due to short-term changes in "Other AFDC-EA." The average for 1993 was almost 7900, under 7300 for 1994, and about 6700 for the first three months of 1995.

The decline in the number of Families receiving Temporary Rental Assistance accounted for much of the decline in EA. At almost 4900 in May 1993, TRA declined to about 3600 in the first three months of 1995.

Motel placements were around 700 during most of 1993, and around 600 in late 1993 and the first half of 1994. The level was again near 700 during the second half of 1994, but dropped to about 600 by early 1995. There were peaks in August 1993 and August 1994

Emergency shelter placements peaked at 573 in October 1993, and have remained below 500 since then.

During the period, All Other AFDC-EA fluctuated between a high of 2498 in May 1993 and a low of 1713 in December 1994.

#### **JOBS/FDP PARTICIPATION RATES (Table 8, Graph 8)**

Statewide participation in JOBS/FDP reached a new high in March 1995 at 23.8 percent, increasing 3.5 percent over February. The early 1995 pattern was similar to early 1994, with a drop of about 1 percent from December to January, little change from January to February and a 3 percent jump in March. An upward shift can be seen in the statewide rate in the last 18 months.

Most counties have shown gradual upward movement, though participation rates vary widely and some fluctuate markedly. Several experienced declines in Winter 1993/1994, moved up in March 1994, declined from May through August 1994, then turned upward in September and October 1994. Rates remained fairly stable through December 1994, and declined in January 1995. Twenty of the twenty-one counties had increased participation rates in March.

Essex county's rate exceeded 10 percent for the first time in March 1995. Only Cape May remains below 10 percent. In many counties rates have been between 10 and 30 percent. Atlantic, Cumberland, Salem, Somerset, Sussex and Warren are approaching or exceeding 50 percent, while Passaic has exceeded 30 percent since October 1994, as did Gloucester and Mercer in March.

#### **GENERAL ASSISTANCE (Table 9, Graph 9)**

For the period January 1993 through September 1994 (the latest available information), the number of GA recipients peaked at about 37,400 in March 1993 and at 38,100 in March 1994. The number declined to 34,900 in September 1994.

During the same period, the number of employable recipients also peaked in March 1993 (25,900) and March 1994 (26,400). The September 1994 level, about 23,000, was the lowest in the period.

The number of Unemployable GA recipients remained between 11,000 and 11,700 from January 1993 through April 1994. Unemployables exceeded 12,000 from May through August 1994, and declined to about 11,800 in September.

#### **CHILD SUPPORT AND PATERNITY (Table 10)**

Total collections of the Child Support and Paternity Program grew from about \$438 million to more than \$510 million from FY1993 to FY1994, an increase of 16.6 percent. Total AFDC/Foster Care collections remained almost unchanged at around \$92 million. Non-AFDC collections grew from less than \$346 million to almost \$418 million, or 21 percent.

For the nine months ended March 1995 (three quarters of FY1995), AFDC/Foster Care Collections were up by one percent from a year earlier, led by a 1.7 million dollar increase in income withholdings and about 1.5 million in collections for other states. Non-AFDC collections were up 14 percent, or about \$44 million more. Most of the increase was in Income Withholding, Other/Own Behalf, and For Other States.

New Jersey Department  
of Human Services  
Division of Family Development

**TABLE 1**  
**AFDC Program**

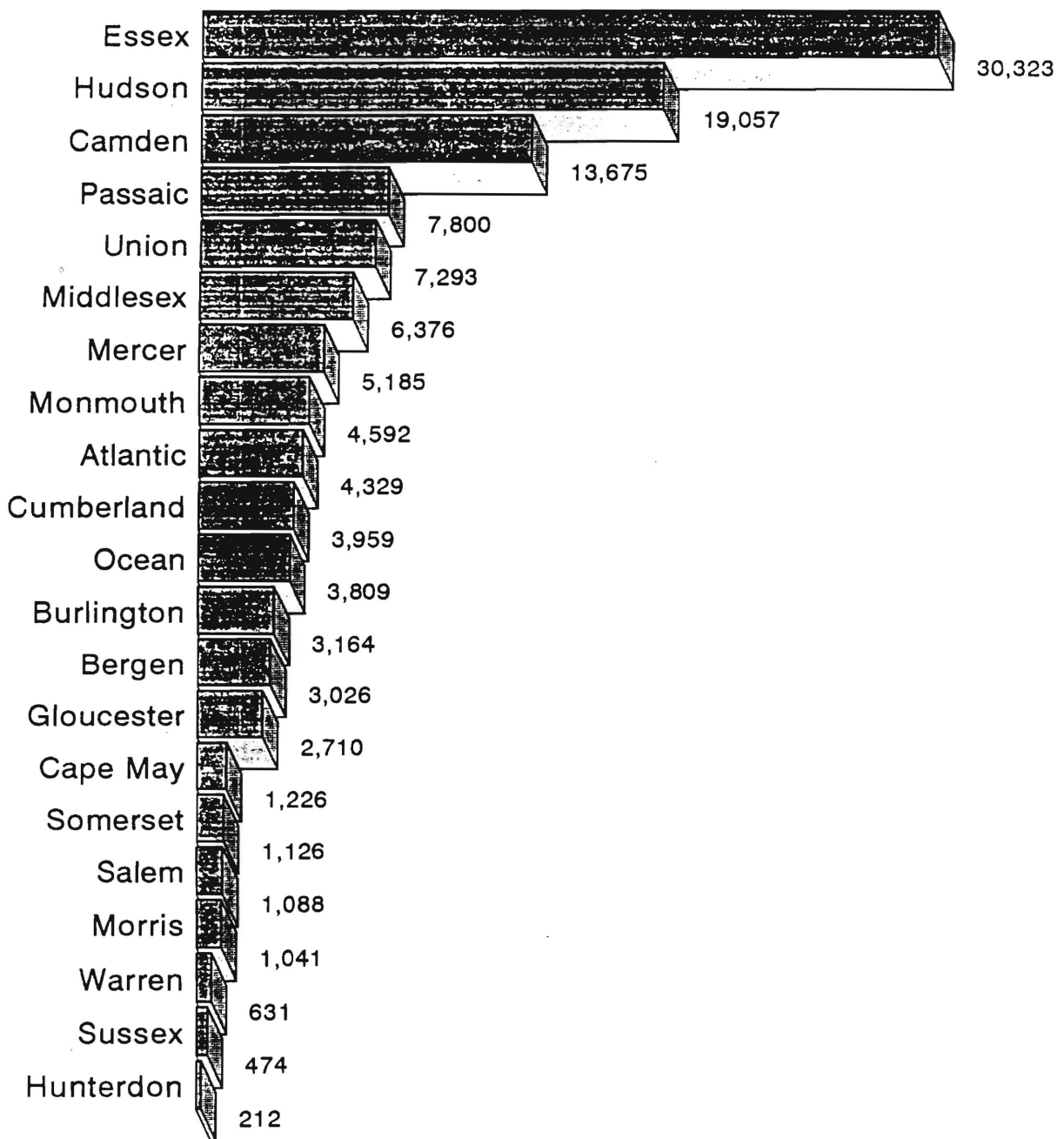
NUMBER OF APPLICATIONS AND TERMINATIONS DURING REPORT MONTH,  
AND NUMBER OF ELIGIBLE FAMILIES RECEIVING AFDC AT END OF REPORT  
MONTH

**March 1995**

County	Applications Approved	Terminations	Regular AFDC (C Segment)	Unemployed Parents (F)	State AFDC (N)	Medicaid Only	TOTAL AFDC
Atlantic	294	289	3,957	142	87	143	4,329
Bergen	132	149	2,636	178	125	87	3,026
Burlington	246	201	2,747	107	88	222	3,164
Camden	786	870	11,927	626	359	763	13,675
Cape May	107	77	989	97	73	67	1,226
Cumberland	258	245	3,339	205	194	221	3,959
Essex	857	1,042	28,770	557	256	740	30,323
Gloucester	244	258	2,318	145	84	163	2,710
Hudson	498	702	17,123	386	614	934	19,057
Hunterdon	10	18	171	12	12	17	212
Mercer	420	427	4,722	100	103	260	5,185
Middlesex	391	404	5,302	268	311	495	6,376
Monmouth	260	284	4,240	110	180	62	4,592
Morris	56	78	909	52	33	47	1,041
Ocean	234	199	3,182	217	195	215	3,809
Passaic	313	341	7,134	341	263	62	7,800
Salem	123	95	957	29	35	67	1,088
Somerset	140	97	906	58	37	125	1,126
Sussex	49	50	375	32	14	53	474
Union	347	354	6,577	197	214	305	7,293
Warren	45	41	519	44	28	40	631
<b>NJ TOTAL</b>	<b>5,810</b>	<b>6,221</b>	<b>108,800</b>	<b>3,903</b>	<b>3,305</b>	<b>5,088</b>	<b>121,096</b>

Data Sources: Data is derived from NJ Division of Family Development's FAMIS report # FF-012.

# Current AFDC Families March 1995, By County



New Jersey Department of Human Services  
Division of Family Development

**TABLE 2**  
**FOOD STAMP Program**

NUMBER OF ATP'S ISSUED TO HOUSEHOLDS,  
PERSONS, ADULTS AND CHILDREN AT THE END OF THE REPORT MONTH

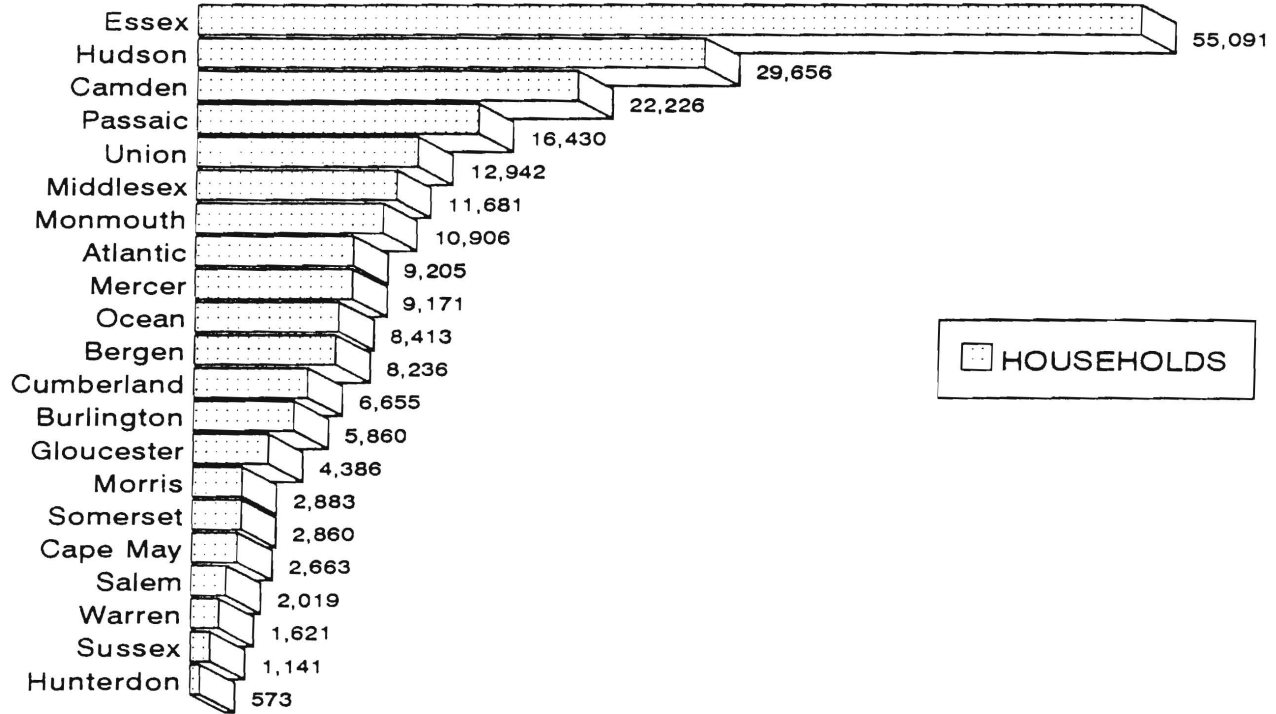
March 1995

County	HOUSEHOLDS			PERSONS				
	AFDC	Other low income	TOTAL	TOTAL	AFDC	Other low income	Adults	Children
Atlantic	4,322	4,883	9,205	20,720	13,832	6,888	10,045	10,675
Bergen	2,794	5,442	8,236	16,661	8,314	8,347	9,589	7,072
Burlington	2,772	3,088	5,860	13,543	8,445	5,098	6,646	6,897
Camden	13,158	9,068	22,226	56,280	43,020	13,260	25,102	31,178
Cape May	1,233	1,430	2,663	6,755	4,213	2,542	3,271	3,484
Cumberland	3,830	2,825	6,655	17,518	12,850	4,668	7,988	9,530
Essex	29,837	25,254	55,091	129,146	92,551	36,595	59,136	70,010
Gloucester	2,452	1,934	4,386	10,972	7,690	3,282	5,123	5,849
Hudson	17,582	12,074	29,656	72,240	53,906	18,334	32,202	40,038
Hunterdon	182	391	573	1,179	570	609	669	510
Mercer	4,705	4,466	9,171	20,331	14,479	5,852	9,544	10,787
Middlesex	5,860	5,821	11,681	26,653	17,530	9,123	13,108	13,545
Monmouth	4,368	6,538	10,906	23,854	13,741	10,113	12,256	11,598
Morris	941	1,942	2,883	5,974	2,834	3,140	3,352	2,622
Ocean	3,699	4,714	8,413	21,163	12,087	9,076	10,032	11,131
Passaic	7,242	9,188	16,430	39,254	23,900	15,354	18,628	20,626
Salem	1,073	946	2,019	4,976	3,442	1,534	2,299	2,677
Somerset	1,030	1,830	2,860	5,663	2,966	2,697	3,111	2,552
Sussex	438	703	1,141	2,728	1,387	1,341	1,426	1,302
Union	6,199	6,743	12,942	30,023	19,676	10,347	14,501	15,522
Warren	622	999	1,621	3,823	1,971	1,852	1,966	1,857
<b>NJ TOTAL</b>	<b>114,339</b>	<b>110,279</b>	<b>224,618</b>	<b>529,456</b>	<b>359,404</b>	<b>170,052</b>	<b>249,994</b>	<b>279,462</b>

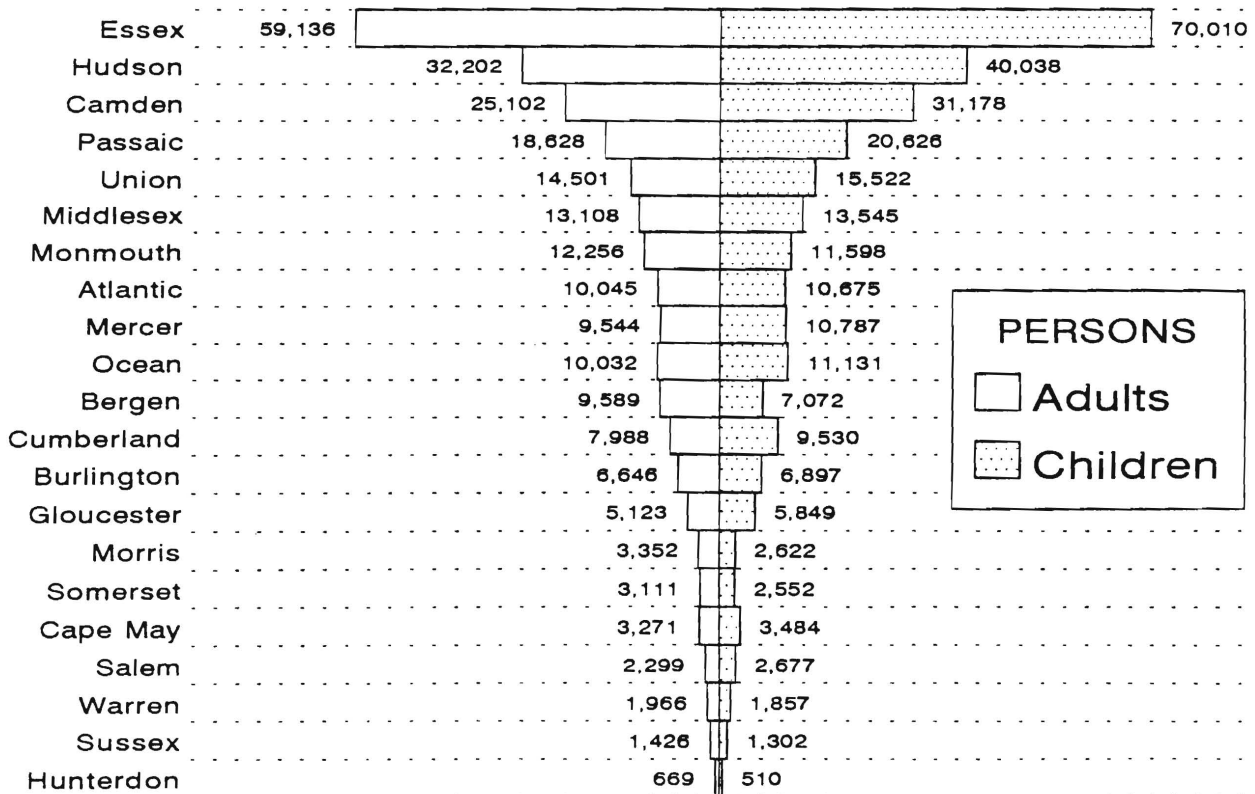
ATP - Authorization to Participate, may include some duplication

Data Sources: Data is derived from NJ Division of Family Development's FAMIS report # FB-160.

# Food Stamp Households March 1995, By County



HOUSEHOLDS



PERSONS  
 Adults  
 Children

New Jersey Department of Human Services  
Division of Family Development

**TABLE 3****EMERGENCY ASSISTANCE Program for AFDC recipients**

NUMBER OF APPLICATIONS AND TERMINATIONS DURING REPORT MONTH,  
AND ELIGIBLE FAMILIES RECEIVING EMERGENCY ASSISTANCE  
AT END OF REPORT MONTH

March 1995

County	Applications Approved	Terminations	Total families receiving EA	Temporary rental assist.	Motel Housing	Emergency Shelter	Other AFDC-EA
Atlantic	272	99	342	222	26	32	62
Bergen	42	69	433	349	31	21	32
Burlington	48	40	88	19	7	44	18
Camden	158	215	203	55	3	27	118
Cape May	28	26	37	9	6	0	22
Cumberland	34	29	27	3	1	14	9
Essex	670	47	2,466	1,920	91	87	368
Gloucester	25	20	103	68	9	26	0
Hudson	44	36	135	52	5	26	52
Hunterdon	1	5	18	9	3	5	1
Mercer	122	120	731	105	59	3	564
Middlesex	113	346	731	386	33	20	292
Monmouth	51	82	289	132	61	5	91
Morris	18	8	18	0	5	11	2
Ocean	65	85	349	201	145	3	0
Passaic	660	526	658	7	18	26	607
Salem	64	19	45	23	19	1	2
Somerset	21	16	94	26	6	23	39
Sussex	30	11	63	15	19	9	20
Union	389	320	204	44	10	29	121
Warren	19	17	28	0	13	6	9
<b>NJ TOTAL</b>	<b>2,874</b>	<b>2,136</b>	<b>7,062</b>	<b>3,645</b>	<b>570</b>	<b>418</b>	<b>2,429</b>

Data Sources: Data is compiled by County Welfare Agencies & reported to the  
NJ Division of Family Development on report form # PA-217.



NEW JERSEY DEPARTMENT OF HUMAN SERVICES  
DIVISION OF FAMILY DEVELOPMENT

TABLE 4  
FAMILY DEVELOPMENT PROGRAM  
STATISTICAL SUMMARY

COUNTY	SNAPSHOT OF ACTIVITY AS OF MARCH 1995				ACTIVITY FOR MONTH OF MARCH 1995					
	TOTAL NONEXMT JOBS/FDP RECI- PIENTS	EMPLOYMENT DIRECTED ACTIVITIES(1)			PARTIC IN EDAs & REC SUP SERV		PARTIC W/ 1st C M INTV	# EMPL THIS MONTH & STILL REC AFDC	# CLSD ON FAMIS RE: EARNGS(2)	POST AFDC & REC CH CARE
		TRAIN- ING	EDUCA- TION	JOB SEARCH	TREs	CHILD CARE				
ATLANTIC	1,948	420	334	69	434	252	242	58	77	121
BERGEN	1,714	213	137	119	177	106	45	10	53	58
BURLINGTON	1,483	254	148	30	311	139	94	43	45	118
CAMDEN	8,220	316	669	44	979	603	149	48	160	185
CAPE MAY	850	26	62	4	59	11	21	11	20	3
CUMBERLAND	1,842	310	341	50	688	303	374	24	69	144
ESSEX	16,356	681	746	154	1,134	576	648	23	202	106
GLOUCESTER	1,128	248	172	25	388	145	106	5	27	67
HUDSON	11,985	866	1,497	44	1,814	850	491	27	171	203
HUNTERDON	124	9	20	4	13	13	3	3	9	7
MERCER	2,902	230	316	77	241	214	153	32	88	103
MIDDLESEX	3,343	308	208	39	280	115	356	36	95	102
MONMOUTH	2,533	259	272	59	480	319	110	32	73	151
MORRIS	503	49	33	0	27	21	162	1	23	24
OCEAN	2,115	242	218	136	184	112	197	26	57	7
PASSAIC	3,855	624	491	65	889	351	291	25	81	132
SALEM	500	81	110	8	133	82	48	15	13	51
SOMERSET	511	70	118	17	99	70	27	17	36	46
SUSSEX	280	27	58	44	44	32	8	0	8	18
UNION	3,872	352	388	108	641	283	308	31	79	95
WARREN	386	22	68	53	25	19	13	7	19	16
STATE	66,450	5,607	6,406	1,149	9,040	4,616	3,846	474	1,405	1,757

(1) – The number of participants receiving support services may occasionally exceed the number actively participating in EDAs. This can result from extended assessment or evaluation activities or, the issuance of bridge payments.

(2) – FAMIS file date 3/24/95

New Jersey Department of Human Services  
Division of Family Development

**TABLE 5**  
**AFDC Program State Summary**

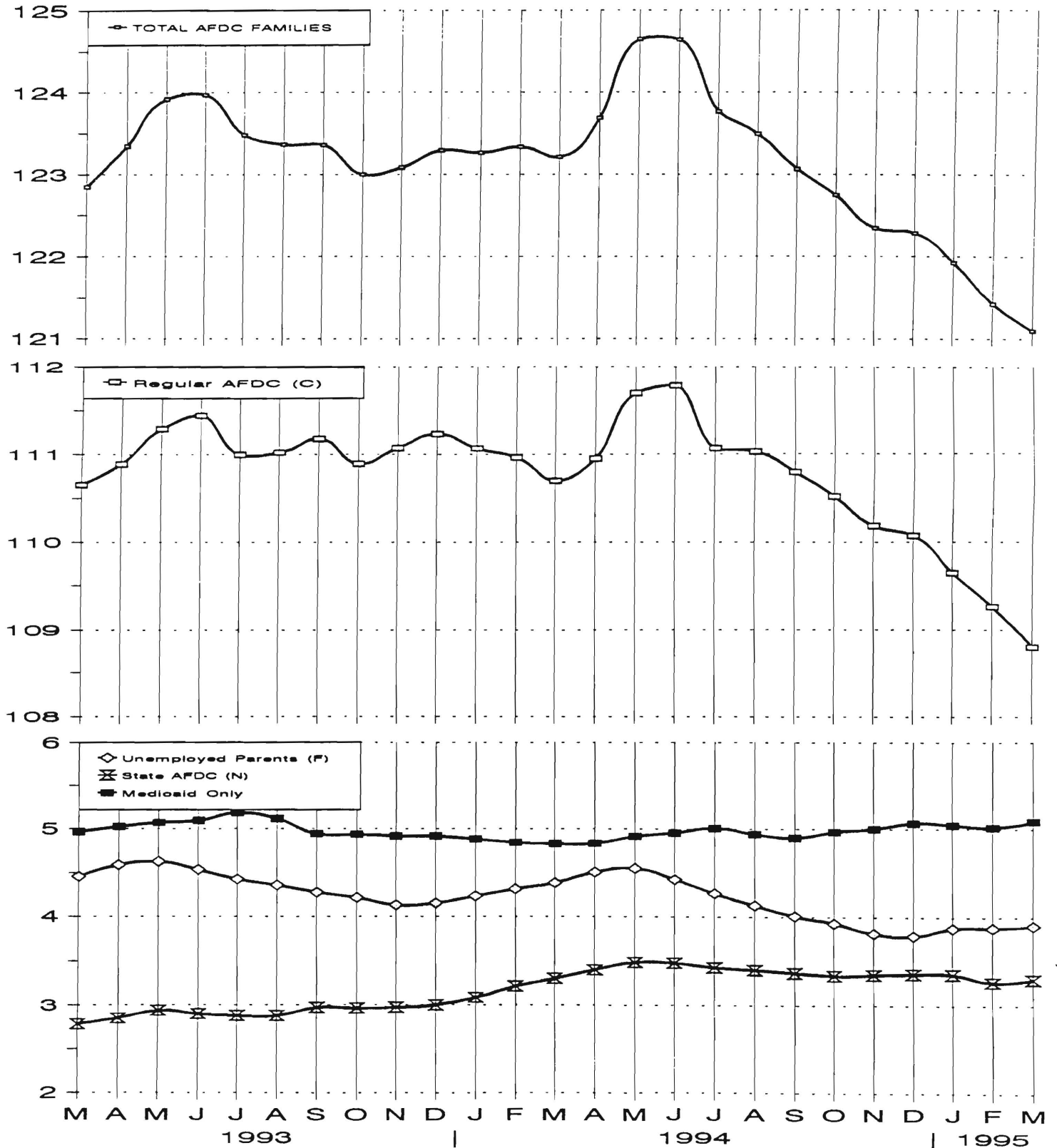
NUMBER OF APPLICATIONS AND TERMINATIONS DURING REPORT MONTH,  
AND NUMBER OF ELIGIBLE FAMILIES RECEIVING AFDC AT END OF REPORT MONTH

**March 1993 through March 1995**

		Applications Approved	Termin- ations	Regular AFDC (C Segment)	Unemployed Parents (F)	State AFDC (N)	Medicaid Only	TOTAL AFDC
1993	Mar	5,515	5,207	110,651	4,455	2,782	4,962	122,850
	Apr	5,680	5,467	110,888	4,587	2,850	5,021	123,346
	May	6,532	5,947	111,290	4,626	2,935	5,068	123,919
	Jun	5,360	5,330	111,445	4,533	2,898	5,091	123,967
	Jul	5,292	5,771	110,996	4,424	2,880	5,179	123,479
	Aug	6,103	6,235	111,020	4,355	2,879	5,111	123,365
	Sep	5,795	5,857	111,177	4,274	2,969	4,939	123,359
	Oct	5,380	5,820	110,893	4,213	2,961	4,934	123,001
	Nov	6,774	6,902	111,072	4,131	2,969	4,916	123,088
	Dec	5,590	5,462	111,231	4,152	2,997	4,915	123,295
AVERAGE (12 MONTHS)		5,760	5,688	110,942	4,365	2,860	5,012	123,178
1994	Jan	5,452	5,349	111,067	4,232	3,085	4,881	123,265
	Feb	5,449	5,518	110,964	4,314	3,214	4,844	123,336
	Mar	5,693	5,893	110,699	4,383	3,301	4,831	123,214
	Apr	6,284	5,997	110,951	4,506	3,399	4,834	123,690
	May	7,094	6,188	111,700	4,549	3,483	4,913	124,645
	Jun	5,758	5,742	111,787	4,423	3,477	4,953	124,640
	Jul	5,117	5,898	111,064	4,266	3,428	5,007	123,765
	Aug	6,435	6,827	111,025	4,128	3,401	4,940	123,494
	Sep	6,266	6,754	110,790	4,007	3,369	4,900	123,066
	Oct	6,592	6,950	110,517	3,927	3,340	4,966	122,750
	Nov	6,344	6,796	110,181	3,814	3,350	5,002	122,347
	Dec	5,682	5,890	110,070	3,789	3,360	5,065	122,284
AVERAGE		6,014	6,150	110,901	4,195	3,351	4,928	123,375
1995	Jan	5,583	5,944	109,645	3,875	3,358	5,045	121,923
	Feb	5,964	6,515	109,261	3,878	3,270	5,016	121,425
	Mar	5,810	6,221	108,800	3,903	3,305	5,088	121,096
AVERAGE		5,786	6,227	109,235	3,885	3,311	5,050	121,481

# Eligible Families Receiving AFDC

March 1993 through March 1995  
(Thousands of Families)



New Jersey Department of Human Services  
Division of Family Development

**TABLE 6**  
**FOOD STAMP Program State Summary**

NUMBER OF ATP'S ISSUED TO HOUSEHOLDS,  
PERSONS, ADULTS AND CHILDREN AT THE END OF THE REPORT MONTH

March 1993 through March 1995

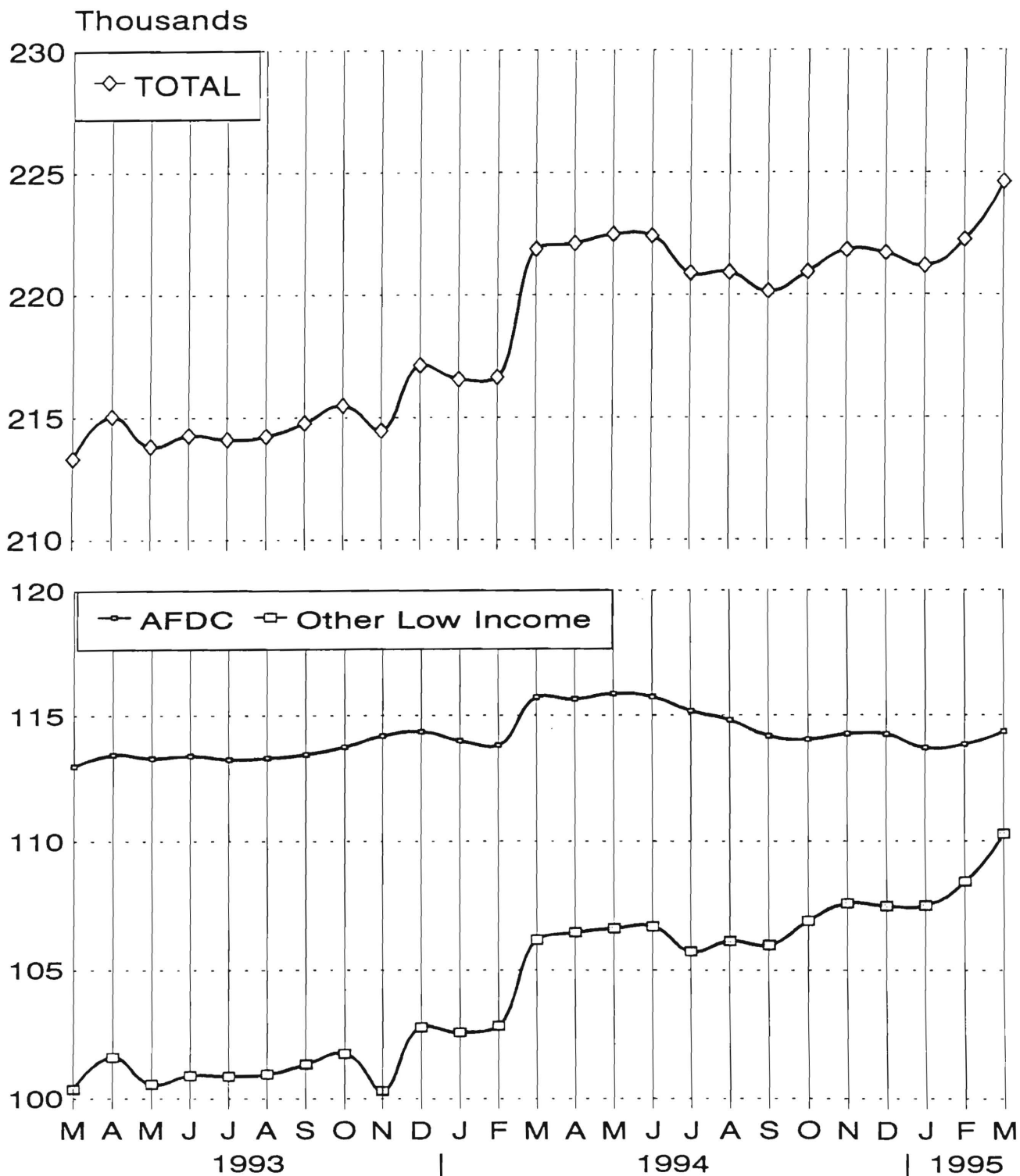
County	HOUSEHOLDS			PERSONS					
	AFDC	Other low income	TOTAL	TOTAL	AFDC	Other low income	Adults	Children	
1993	Mar	112,965	100,359	213,324	516,142	357,246	158,896	238,723	277,419
	Apr	113,431	101,609	215,040	519,374	358,643	160,731	240,630	278,744
	May	113,282	100,555	213,837	516,825	357,958	158,867	239,134	277,691
	Jun	113,383	100,890	214,273	517,200	358,320	158,880	239,364	277,836
	Jul	113,238	100,872	214,110	516,546	357,867	158,679	238,893	277,653
	Aug	113,292	100,947	214,239	516,113	358,109	158,004	238,801	277,312
	Sep	113,439	101,341	214,780	516,517	358,261	158,256	239,247	277,270
	Oct	113,737	101,753	215,490	517,657	358,804	158,853	239,902	277,755
	Nov	114,180	100,295	214,475	519,932	360,125	159,807	241,029	278,903
	Dec	114,348	102,790	217,138	521,307	360,858	160,449	241,989	279,318
AVERAGE (12 Months)		113,235	100,374	213,609	515,793	357,762	158,032	238,605	277,188
1994	Jan	113,984	102,590	216,574	519,549	359,422	160,127	241,575	277,974
	Feb	113,804	102,843	216,647	519,760	359,227	160,533	241,993	277,767
	Mar	115,730	106,160	221,890	530,892	365,132	165,760	248,219	282,673
	Apr	115,661	106,454	222,115	530,591	365,241	165,350	248,331	282,260
	May	115,874	106,611	222,485	530,595	364,941	165,654	248,420	282,175
	Jun	115,737	106,683	222,420	529,514	364,394	165,120	248,099	281,415
	Jul	115,172	105,717	220,889	526,075	362,520	163,555	246,142	279,933
	Aug	114,809	106,115	220,924	524,659	361,106	163,553	246,052	278,607
	Sep	114,177	105,972	220,149	521,945	358,849	163,096	244,835	277,110
	Oct	114,039	106,903	220,942	522,406	358,010	164,396	245,676	276,730
	Nov	114,251	107,577	221,828	524,090	358,582	165,508	246,659	277,431
	Dec	114,232	107,467	221,699	523,825	358,446	165,379	246,517	277,308
AVERAGE		114,789	105,924	220,714	525,325	361,323	164,003	246,043	279,282
1995	Jan	113,691	107,493	221,184	522,125	356,763	165,362	245,837	276,288
	Feb	113,830	108,421	222,251	524,344	357,419	166,925	247,107	277,237
	Mar	114,339	110,279	224,618	529,456	359,404	170,052	249,994	279,462
AVERAGE		113,953	108,731	222,684	525,308	357,862	167,446	247,646	277,662

ATP - Authorization to Participate

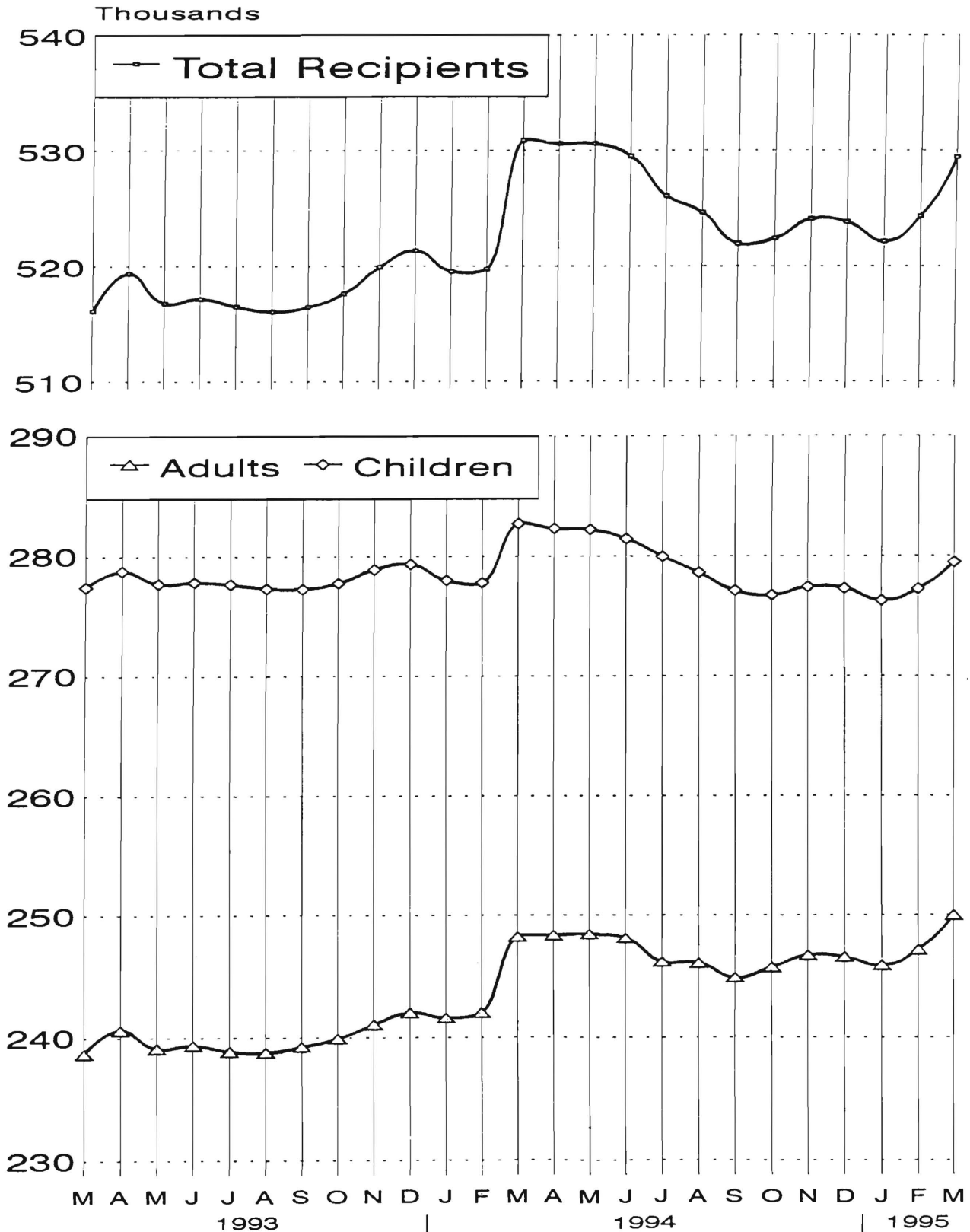
Data Sources: Data is derived from NJ Division of Family Development's FAMIS report # FB-160.

# Food Stamp Households

March 1993 through March 1995



Food Stamp Recipients  
March 1993 through March 1995



New Jersey Department of Human Services  
Division of Family Development

**TABLE 7**  
**EMERGENCY ASSISTANCE Program for AFDC recipients**  
**State Summary**

NUMBER OF APPLICATIONS AND TERMINATIONS DURING REPORT MONTH,  
AND NUMBER OF ELIGIBLE FAMILIES RECEIVING EMERGENCY ASSISTANCE  
AT END OF REPORT MONTH

**March 1993 through March 1995**

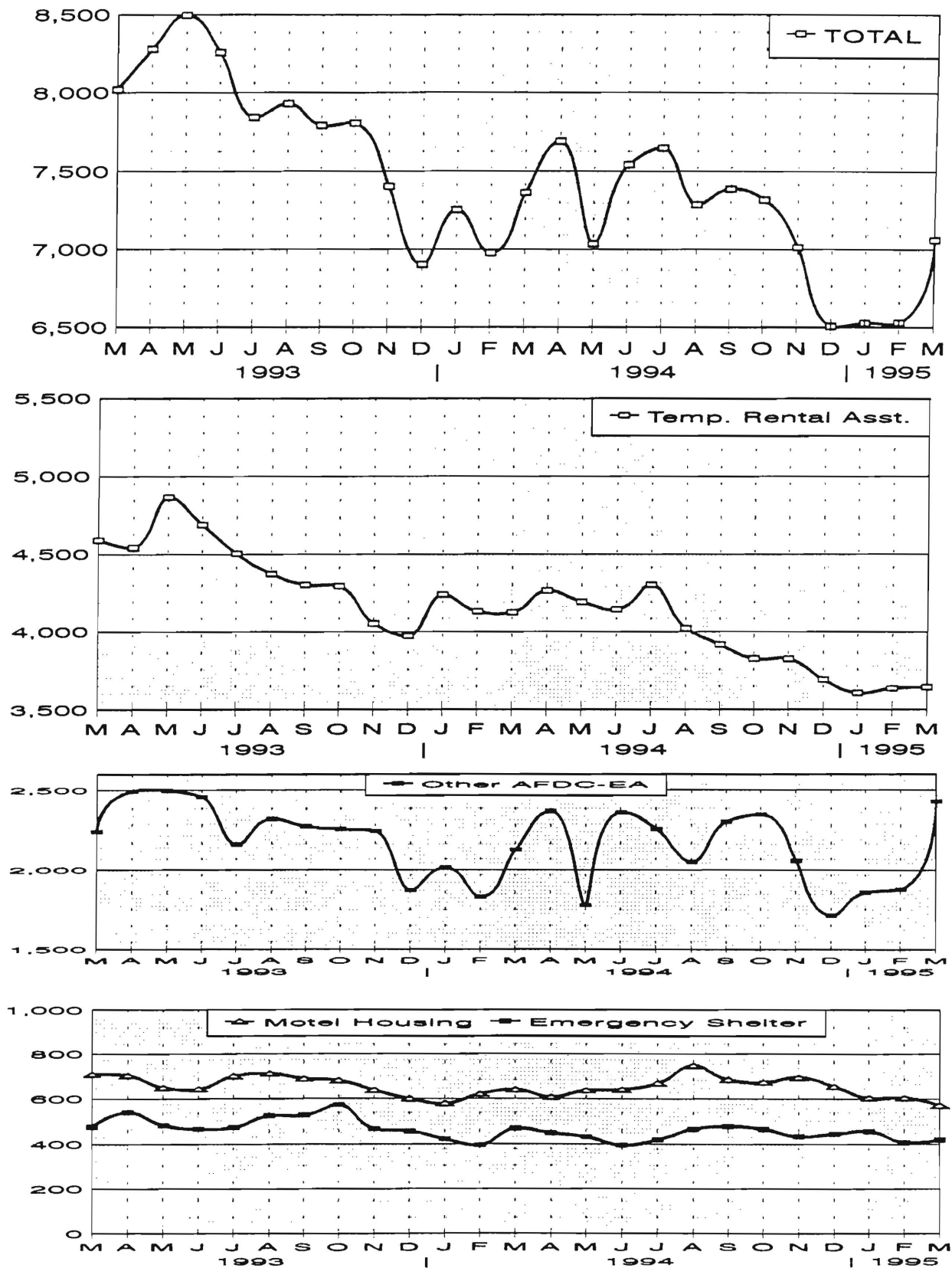
		Applications Approved	Terminations	Total families receiving EA	Temporary rental assist.	Motel Housing	Emergency Shelter	Other AFDC-EA	
1993	Mar	3,440	2,259	8,020	4,589	711	478	2,242	
	Apr	3,679	2,570	8,280	4,542	704	540	2,494	
	May	3,051	2,505	8,497	4,866	650	483	2,498	
	Jun	3,054	2,477	8,257	4,688	644	467	2,458	
	Jul	2,998	2,126	7,842	4,504	701	474	2,163	
	Aug	3,388	2,212	7,929	4,372	713	524	2,320	
	Sep	2,917	2,360	7,791	4,302	689	526	2,274	
	Oct	3,461	2,397	7,806	4,294	681	573	2,258	
	Nov	2,867	2,306	7,402	4,053	638	467	2,244	
	Dec	2,431	1,810	6,903	3,974	600	457	1,872	
	AVERAGE (12 MONTHS)		3,053	2,308	7,870	4,465	685	497	2,223
	1994	Jan	2,456	2,022	7,252	4,239	579	422	2,012
Feb		2,019	1,716	6,977	4,131	621	395	1,830	
Mar		3,146	1,911	7,362	4,125	640	468	2,129	
Apr		3,115	2,246	7,689	4,265	607	448	2,369	
May		3,264	2,453	7,036	4,192	637	431	1,776	
Jun		2,945	2,202	7,542	4,145	641	395	2,361	
Jul		2,756	1,866	7,647	4,302	669	419	2,257	
Aug		2,972	2,144	7,285	4,021	749	466	2,049	
Sep		3,173	2,202	7,385	3,919	685	478	2,303	
Oct		2,787	2,125	7,315	3,827	673	466	2,349	
Nov		2,667	1,865	7,013	3,826	695	434	2,058	
Dec		2,313	1,624	6,506	3,693	655	445	1,713	
AVERAGE		2,801	2,031	7,251	4,057	654	439	2,101	
1995	Jan	2,419	1,883	6,526	3,607	604	457	1,858	
	Feb	2,418	1,815	6,528	3,636	605	408	1,879	
	Mar	2,874	2,136	7,062	3,645	570	418	2,429	
	AVERAGE		2,570	1,945	6,705	3,629	593	428	2,055

Data Sources: Data is compiled by County Welfare Agencies & reported to the NJ Division of Family Development on report form # PA-217.

# GRAPH 7

## AFDC Families Receiving Emergency Assistance

March 1993 through March 1995



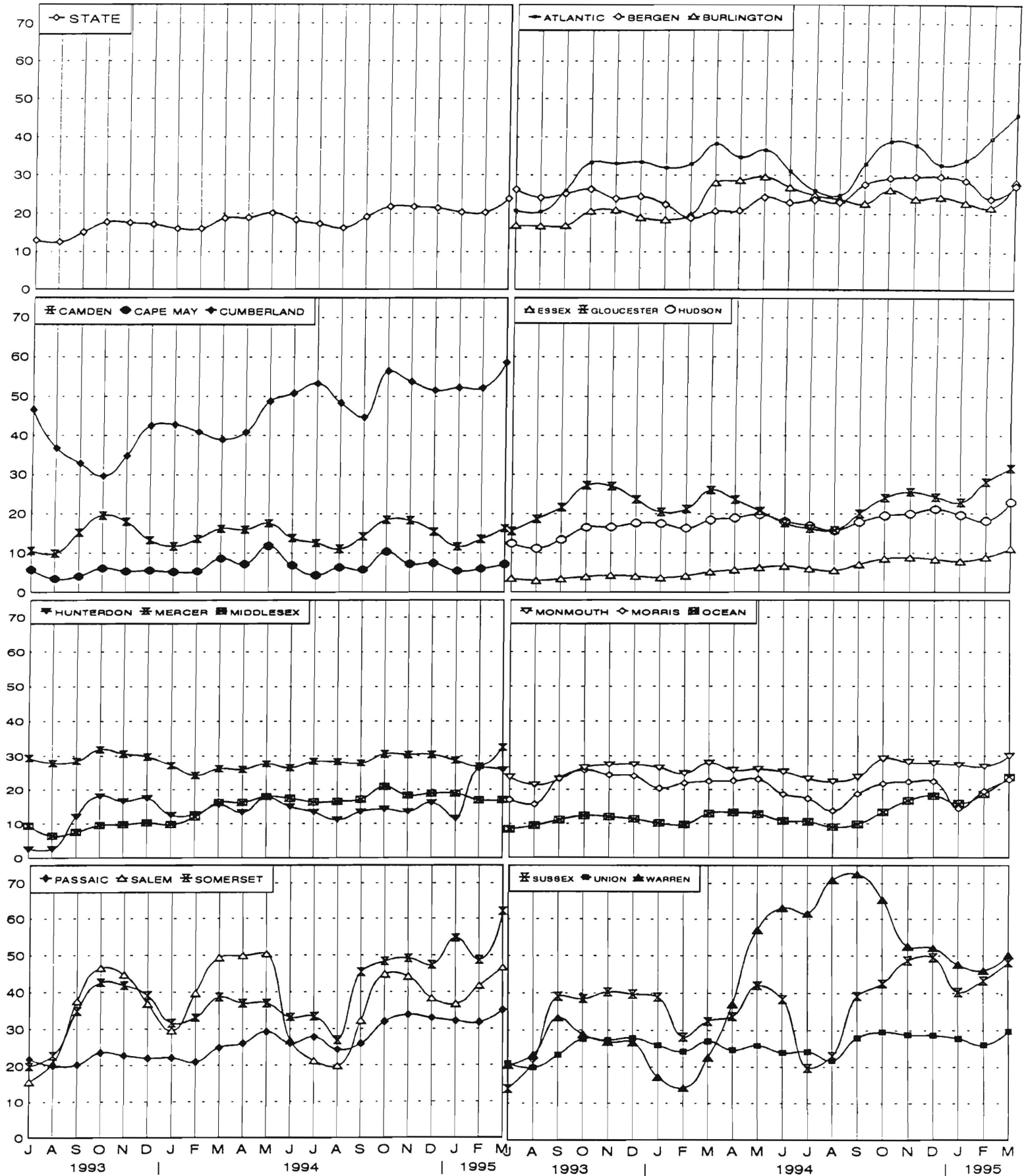
New Jersey Department of Human Services  
Division of Family Development

TABLE 8  
JOBS/FDP PARTICIPATION RATES BY MONTH  
(PERCENT)

COUNTY	OCT 93	NOV 93	DEC 93	JAN 94	FEB 94	MAR 94	APR 94	MAY 94	JUN 94	JUL 94	AUG 94	SEP 94	OCT 94	NOV 94	DEC 94	JAN 95	FEB 95	MAR 95
ATLANTIC	33.3	33.1	33.5	32.0	32.9	38.2	34.7	36.6	31.0	26.0	24.8	33.0	39.0	38.0	32.8	34.2	39.8	46.1
BERGEN	26.3	23.9	24.4	22.4	18.8	20.6	20.7	24.2	22.9	23.5	23.0	27.6	29.3	29.7	29.7	28.6	23.9	27.3
BURLINGTON	20.6	21.0	19.0	18.4	19.6	28.0	28.6	29.6	26.8	24.7	23.7	22.7	26.2	23.9	24.4	22.9	21.8	28.5
CAMDEN	19.6	18.0	13.3	11.7	13.6	16.2	16.0	17.6	13.8	12.6	11.1	14.3	18.5	18.3	15.5	11.7	13.6	16.3
CAPE MAY	6.2	5.4	5.6	5.2	5.4	8.6	7.2	11.8	6.9	4.4	6.3	5.8	10.4	7.3	7.5	5.5	6.0	7.2
CUMBERLAND	42.6	42.8	40.9	39.0	40.9	48.7	50.8	53.2	48.3	44.7	45.1	52.5	56.4	53.7	51.5	52.2	52.1	58.6
ESSEX	3.9	4.3	4.1	3.7	4.1	5.2	5.7	6.3	6.7	6.0	5.5	7.2	8.5	8.8	8.3	7.8	8.8	11.0
GLOUCESTER	27.2	27.0	23.6	20.4	21.2	26.0	23.6	20.7	17.6	16.2	15.8	20.0	24.0	25.5	24.2	22.8	28.1	31.6
HUDSON	16.6	16.6	17.6	17.5	16.3	18.4	19.0	19.7	18.1	17.0	15.7	17.9	19.5	20.0	21.1	19.6	18.1	22.9
HUNTERDON	18.1	16.6	17.4	12.5	12.7	15.5	13.3	17.5	15.0	13.3	11.1	13.4	14.2	13.5	16.1	11.5	26.2	25.8
MERCER	31.8	30.6	29.7	27.1	24.2	26.2	26.0	27.6	26.4	28.4	28.3	27.9	30.5	30.4	30.4	28.7	27.0	32.5
MIDDLESEX	9.5	9.7	10.3	9.8	12.0	16.2	16.2	17.9	17.4	16.3	16.5	17.1	20.8	18.2	18.8	18.8	16.8	16.9
MONMOUTH	26.5	27.4	27.5	26.4	24.7	27.9	25.7	26.0	25.2	23.2	22.3	23.7	29.2	28.2	27.8	27.3	26.8	29.9
MORRIS	25.7	24.3	24.0	20.3	21.9	22.4	22.6	23.1	18.6	17.3	13.7	18.7	21.7	22.2	22.4	14.4	19.5	22.9
OCEAN	12.2	12.0	11.3	10.1	9.7	12.9	13.2	12.7	10.8	10.6	9.0	9.9	13.4	16.7	18.1	15.8	18.6	23.6
PASSAIC	23.5	22.7	22.0	22.1	21.0	24.9	26.0	29.2	26.1	27.7	24.3	25.9	31.9	33.9	33.0	32.1	31.7	35.1
SALEM	46.5	44.7	36.8	29.5	39.7	49.3	49.8	50.3	26.7	21.2	19.8	32.2	44.8	44.2	38.3	36.7	41.7	46.6
SOMERSET	42.6	41.8	39.1	31.6	33.1	38.6	37.0	37.0	33.2	33.4	26.9	45.4	48.3	49.1	47.4	54.7	48.7	62.0
SUSSEX	38.4	40.2	39.7	38.9	28.1	32.4	33.7	42.0	38.3	19.7	23.0	39.2	42.6	48.7	49.6	40.2	43.3	48.2
UNION	27.5	27.2	27.8	25.9	24.2	26.9	24.6	25.8	23.9	24.2	21.8	27.9	29.5	28.7	28.6	27.7	26.0	29.6
WARREN	28.8	26.8	26.7	17.2	14.3	22.5	37.0	57.1	63.0	61.5	71.0	72.5	65.4	52.6	52.2	47.7	46.1	50.3
STATE	17.8	17.6	17.2	16.0	16.0	18.8	18.9	20.1	18.3	17.3	16.3	19.1	21.8	21.8	21.5	20.4	20.3	23.8

# GRAPH 8

## JOBS/FDP PARTICIPATION RATES (%)



New Jersey Department of Human Services  
Division of Family Development

**TABLE 9**

**GENERAL ASSISTANCE Program**  
**State Summary**

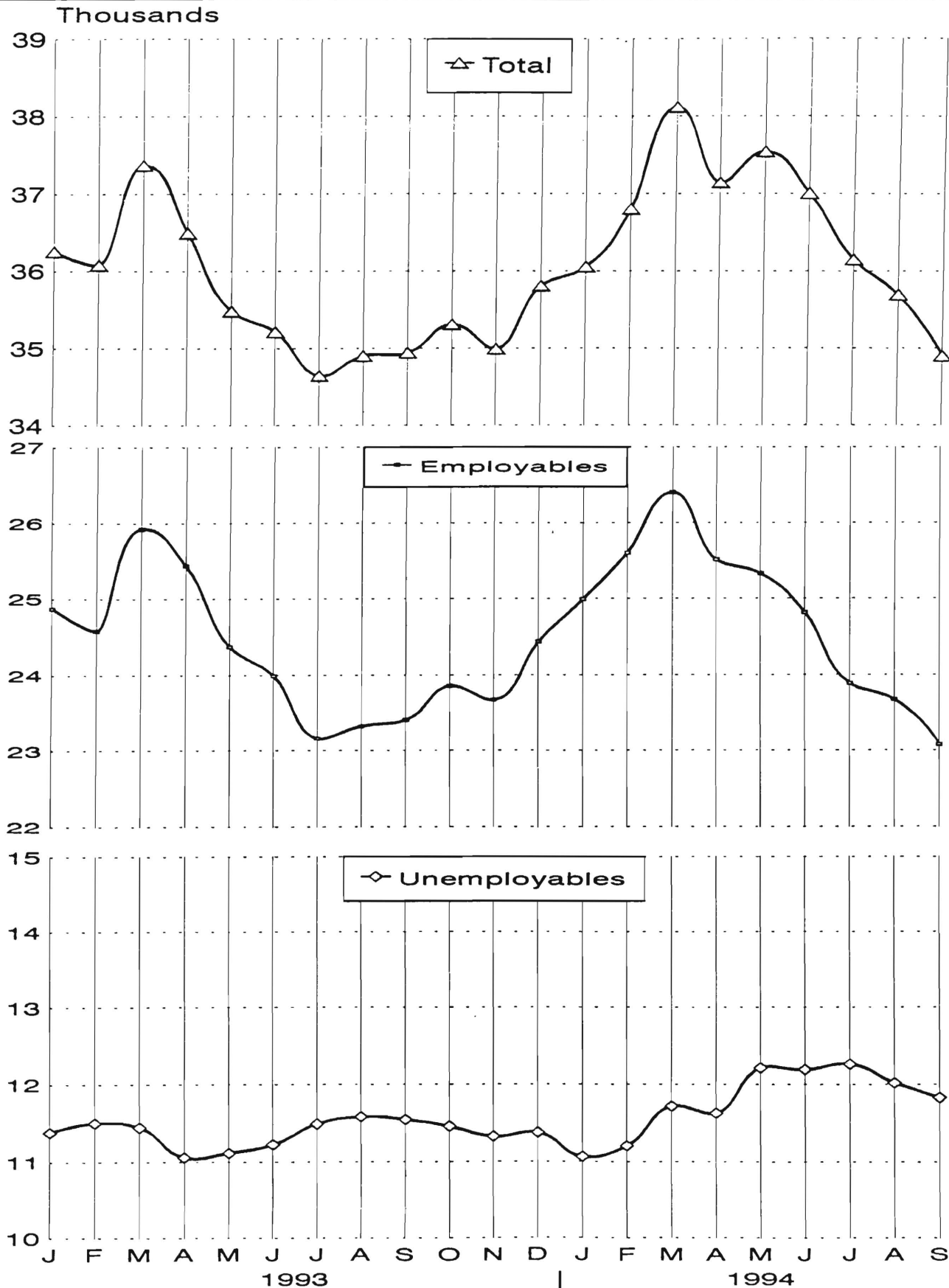
NUMBER OF EMPLOYABLE AND UNEMPLOYABLE  
RECIPIENTS DURING REPORT MONTH

January 1993 through September 1994

		Number of Persons Aided		
		Employables	Unemployables	Total
1993	Jan	24,873	11,384	36,257
	Feb	24,576	11,503	36,079
	Mar	25,921	11,445	37,366
	Apr	25,438	11,057	36,495
	May	24,370	11,113	35,483
	Jun	23,989	11,225	35,214
	Jul	23,156	11,488	34,644
	Aug	23,320	11,580	34,900
	Sep	23,402	11,542	34,944
	Oct	23,853	11,455	35,308
	Nov	23,668	11,324	34,992
	Dec	24,435	11,374	35,809
1993	AVERAGE	24,250	11,374	35,624
1994	Jan	24,992	11,062	36,054
	Feb	25,600	11,202	36,802
	Mar	26,397	11,719	38,116
	Apr	25,512	11,629	37,141
	May	25,327	12,212	37,539
	Jun	24,814	12,190	37,004
	Jul	23,884	12,261	36,145
	Aug	23,671	12,018	35,689
	Sep	23,075	11,825	34,900
1994	AVERAGE	24,808	11,791	36,599

# General Assistance Recipients

January 1993 through September 1994



New Jersey Department of Human Services  
Division of Family Development

**TABLE 10**  
**CHILD SUPPORT AND PATERNITY**  
**State Summary**

CHILD SUPPORT AND PATERNITY  
COLLECTIONS AND TOTAL DISTRIBUTION

\$1000'S

	Fiscal Years 1993 and 1994			Most Recent 9 Months		
	1993	1994	% CHG.	7/93-3/94	7/94-3/95	% CHG.
<b>COLLECTION SOURCE</b>						
<b>AFDC &amp; FOSTER CARE</b>						
Federal Tax	\$13,139	\$15,255	16.1%	\$3,580	\$2,549	-28.8%
State Tax	1,631	1,970	20.8%	1,700	1,440	-15.3%
Unempl. Ins. Ben.	7,249	4,975	-31.4%	3,864	2,566	-33.6%
Income Withholding	40,928	43,219	5.6%	32,054	33,715	5.2%
Other/Own Behalf	19,130	18,137	-5.2%	13,525	13,726	1.5%
From Other States	4,370	3,621	-17.1%	2,768	2,577	-6.9%
For Other States	5,864	5,269	-10.1%	3,577	5,104	42.7%
<b>TOTAL COLLECTION</b>	<b>\$92,311</b>	<b>\$92,446</b>	<b>0.1%</b>	<b>\$61,069</b>	<b>\$61,678</b>	<b>1.0%</b>
<b>NON- AFDC</b>						
Federal Tax	\$4,937	\$3,846	-22.1%	\$2,018	\$1,544	-23.5%
State Tax	1,459	2,193	50.3%	1,884	1,700	-9.8%
Unempl. Ins. Ben.	19,274	15,035	-22.0%	11,530	9,191	-20.3%
Income Withholding	158,036	213,431	35.1%	156,304	185,025	18.4%
Other/Own Behalf	117,224	143,676	22.6%	106,753	117,329	9.9%
From Other States	20,199	19,832	-1.8%	14,909	15,470	3.8%
For Other States	24,316	19,893	-18.2%	13,385	20,241	51.2%
<b>TOTAL COLLECTION</b>	<b>\$345,445</b>	<b>\$417,905</b>	<b>21.0%</b>	<b>\$306,785</b>	<b>\$350,499</b>	<b>14.2%</b>
<b>TOTAL</b>						
Federal Tax	\$18,076	\$19,101	5.7%	\$5,599	\$4,093	-26.9%
State Tax	3,090	4,162	34.7%	3,584	3,140	-12.4%
Unempl. Ins. Ben.	26,523	20,010	-24.6%	15,394	11,756	-23.6%
Income Withholding	198,965	256,650	29.0%	188,358	218,741	16.1%
Other/Own Behalf	136,354	161,813	18.7%	120,278	131,055	9.0%
From Other States	24,568	23,453	-4.5%	17,677	18,047	2.1%
For Other States	30,180	25,162	-16.6%	16,962	25,346	49.4%
<b>TOTAL COLLECTION</b>	<b>\$437,756</b>	<b>\$510,351</b>	<b>16.6%</b>	<b>\$367,854</b>	<b>\$412,177</b>	<b>12.0%</b>
<b>TOTAL DISTRIBUTED</b>	<b>\$426,000</b>	<b>\$468,000</b>	<b>9.9%</b>	<b>\$341,400</b>	<b>\$363,100</b>	<b>6.3%</b>

### Explanatory Notes

The Department of Human Services Division of Family Development provides basic income and an opportunity to achieve self-sufficiency for individuals and families served by the Division's programs. The Division provides leadership, direction and supervision to those public agencies responsible for administering those programs and plans for and develops policies to promote self-sufficiency.

**AID TO FAMILIES WITH DEPENDENT CHILDREN (AFDC)** - Financial assistance for dependent children and their natural or adoptive parents, or certain other relatives recognized as taking the place of a parent.

**Regular AFDC (C Segment)** - assistance when only one parent is in the home due to death or absence, or both parents are in the home but at least one is incapacitated.

**Unemployed Parents (F Segment)** - assistance when both parents are in the home, neither is incapacitated and the primary wage earner meets the federally defined criteria for unemployment.

**State AFDC (N Segment)** - assistance when both parents are in the home, neither is incapacitated, and the primary wage earner does not meet the federal definition of unemployment.

**Medicaid Only** - families no longer receiving AFDC financial assistance but remaining eligible for Medicaid under applicable provisions which extend coverage beyond period of AFDC assistance.

**FOOD STAMP PROGRAM (FS)** - Authorized by Congress as a nutritional supplement program to provide low income households with more food of greater variety and better nutrition. Program eligibility is based on household income, resources, and expenses for medical, shelter, and dependent care. CWA staff refer certain recipients to the New Jersey Department of Labor for participation in the Food Stamp Employment and Training Program.

**EMERGENCY ASSISTANCE (EA)** - Payments to those eligible for AFDC (also for General Assistance or Supplemental Security Income, not included here), authorized during the 30 consecutive days immediately following the emergency (defined as a substantial loss of shelter, food, clothing, or household furnishings by fire, flood or other similar disaster) or if the eligible individual or family is in an imminent or actual state of homelessness.

## **JOBS/FDP**

**JOB OPPORTUNITY AND BASIC SKILLS PROGRAM (JOBS)** - Federally mandated work/training program for recipients of AFDC established by the Family Support Act of 1988 under Part F of Title IV of the Social Security Act.

**FAMILY DEVELOPMENT PROGRAM (FDP)** - Reform legislation enacted by the State Legislature in January 1992 to: build, strengthen, and support the family unit; encourage family formation; reduce the long-term aspects of welfare dependency; look to the needs of the family unit as a whole; emphasize education and training for all family members; maximize use of educational, training and employment resources; and develop genuine private sector job opportunities.

**SNAPSHOT OF ACTIVITY AT POINT IN TIME** - Status of activities as of the end of the month:

**Total Non-Exempt JOBS/FDP Recipients** - Calculation of the number of mandatory IV-F individuals (FAMIS report # FB304).

**Employment Directed Activities (EDA)** - From Activities Summary Report (OMEGA report # RM064). Unduplicated count of persons participating in **Training, Education, or Job Search**.

**Participants in EDA, Receiving Support Services** - From Issuance Disbursement Summary (OMEGA report # RM703). Total number of active participants who show receipt of **Training Related Expenses or Child Care**.

**Participation Rate (JOBS/FDP)** - Federally mandated calculation method, dividing the number of participants whose combined and averaged weekly hours of participation in qualifying activities equals or exceeds 20 hours per week by the total number of non-exempt IV-F recipients. As of the end of the month.

**ACTIVITY FOR THE MONTH** - Number of participants with the indicated activity during the month:

**Participants with First Case Management Interview** - From Activities Summary Report (OMEGA report # RM064).

**Number of Persons Employed This Month, Still Receiving AFDC** - From Activities Summary Report (OMEGA report # RM064).

**Number of Persons Closed on FAMIS Due to Earnings** - From FAMIS report # FM463.

**Post AFDC and Receiving Child Care** - Persons no longer in receipt of AFDC, but still receiving child care. From Issuance Disbursement Summary (OMEGA report # RM703).

New Jersey Department of Human Services  
Division of Family Development

**TABLE 11****GENERAL ASSISTANCE Program**

NUMBER OF EMPLOYABLE AND UNEMPLOYABLE  
RECIPIENTS DURING REPORT MONTH  
Counties and 21 Largest Municipalities

**September 1994**

County	Employables	Unemployables	Total	Municipality	Employables	Unemployables	Total
ATLANTIC	1,282	535	1,817	Atlantic City	1,041	283	1,324
BERGEN	565	567	1,132	Mount Holly	181	119	300
BURLINGTON	597	453	1,050	Camden	2,079	762	2,841
CAMDEN	2,556	1,179	3,735	Vineland	210	97	307
CAPE MAY	101	126	227	East Orange	508	464	972
CUMBERLAND	387	219	606	Irvington	236	74	310
ESSEX	7,464	2,602	10,066	Montclair	205	141	346
GLOUCESTER	195	153	348	Newark	5,939	1,673	7,612
HUDSON	1,301	1,243	2,544	Orange	411	47	458
HUNTERDON	62	63	125	Bayonne	147	80	227
MERCER	1,853	746	2,599	Hoboken	207	104	311
MIDDLESEX	714	571	1,285	Jersey City	714	564	1,278
MONMOUTH	1,009	806	1,815	Trenton	1,740	604	2,344
MORRIS	163	242	405	Perth Amboy	151	113	264
OCEAN	875	542	1,417	Asbury park	315	101	416
PASSAIC	1,931	608	2,539	Long Branch	203	121	324
SALEM	182	116	298	Lakewood	441	140	581
SOMERSET	65	133	198	Passaic	446	264	710
SUSSEX	76	83	159	Paterson	1,371	184	1,555
UNION	1,657	781	2,438	Elizabeth	1,127	368	1,495
WARREN	40	57	97	Plainfield	142	99	241
<b>NJ TOTAL</b>	<b>23,075</b>	<b>11,825</b>	<b>34,900</b>	<b>TOTAL</b>	<b>17,814</b>	<b>6,402</b>	<b>24,216</b>