

January 2024 Traffic Report

AVIATION DEPARTMENT (Data As Of 2/27/2024 2:24:24 PM)

REGION



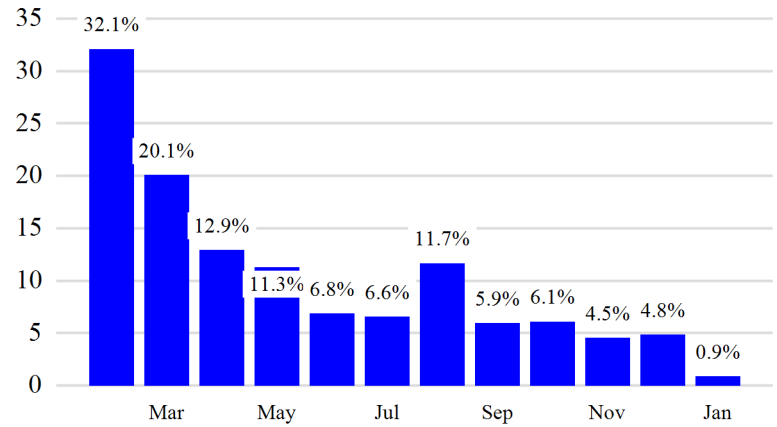
Revenue Passengers

	Curr Month	% Change
	10,353,919	0.9% ▲
Domestic	6,675,830	-3.9%
International	3,678,089	10.9%
Non-Revenue	283,626	-9.6%

Load Factors	Curr Month
Domestic	74.9%
International	77.2%

75.7% Avg Load Factor

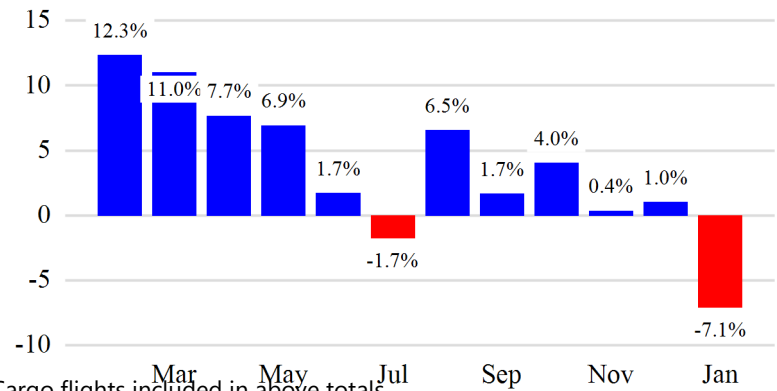
Year over Year % Change in Revenue Passengers - 12 Months



Total Flights

	Curr Month	% Change
	96,535	-7.2% ▼
Excl GA	92,690	-7.1% ▼
Domestic	67,384	-12.2%
International	25,306	10.1%
Gen Aviation	3,845	-11.3%
Cargo Flights*	3,109	0.0%

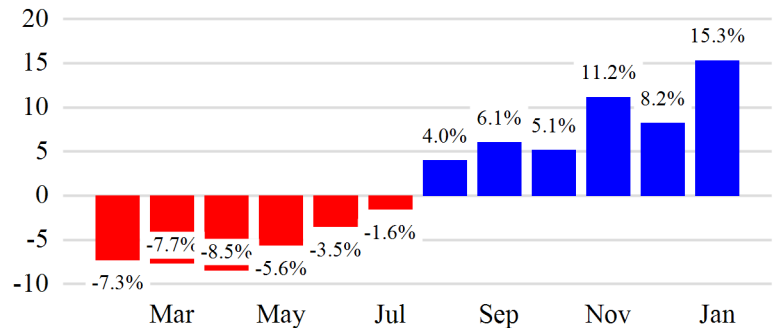
Year over Year % Change in Total Flights (Excl GA) - 12 Months



Cargo (Short Tons)

	Curr Month	% Change
	190,028	15.3% ▲
Domestic	81,281	20.2%
International	108,747	12.0%
Mail	6,648	-34.3%

Year over Year % Change in Cargo - 12 Months



Top 5 Declines in Revenue Passengers by Airline

Airline	Pax Decline	% Decline
JETBLUE AIRWAYS	(240,629)	-14.0%
UNITED	(93,660)	-4.0%
ALASKA AIRLINES	(67,128)	-44.0%
AMERICAN	(10,490)	-1.0%
SINGAPORE AIRLINES	(7,927)	-21.0%

Top 5 Increases in Revenue Passengers by Airline

Airline	Pax Increase	% Increase
DELTA	175,893	8.0%
SPIRIT AIRLINES	68,377	19.0%
AVIANCA	38,030	53.0%
EL AL	26,735	59.0%
QATAR AIRWAYS	25,230	78.0%

Airport Summary Statistics

JFK Summary

	Current Month	YoY %
Total Revenue Pax	4,514,762	1.0
Total Flights Including GA	36,049	-4.0
Total Cargo (Short Tons)	133,966	22.1

EWR Summary

	Current Month	YoY %
Total Revenue Pax	3,534,036	-2.0
Total Flights Including GA	31,968	-7.0
Total Cargo (Short Tons)	53,912	1.9

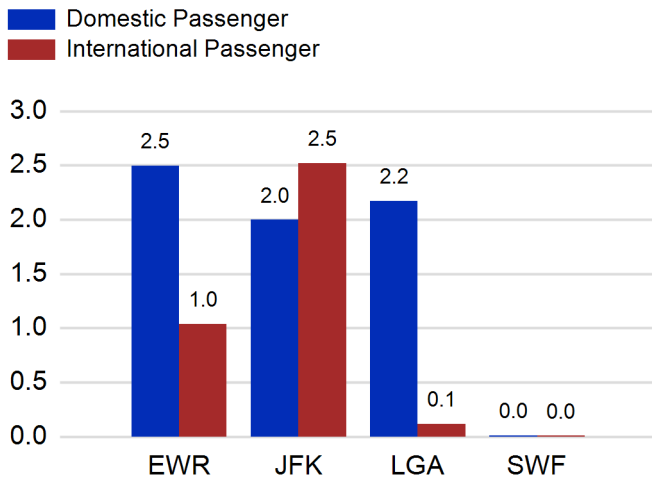
LGA Summary

	Current Month	YoY %
Total Revenue Pax	2,289,201	4.0
Total Flights Including GA	27,221	-8.0
Total Cargo (Short Tons)	427	-10.3

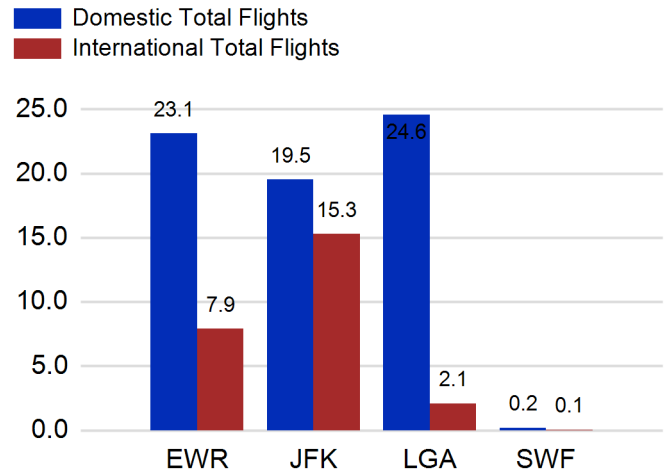
SWF Summary

	Current Month	YoY %
Total Revenue Pax	15,920	-12.0
Total Flights Including GA	1,297	-35.0
Total Cargo (Short Tons)	1,723	2.5

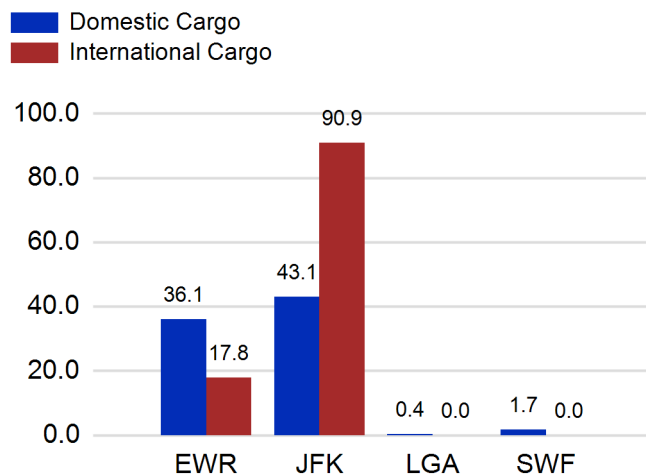
Total Passengers by Airport (Millions)



Total Flights by Airport (Thousands)



Total Cargo by Airport (Thousands of Short Tons)



12 Months Ending Passenger & Freight Statistics

Top 20 Airlines Ranking by Passengers & Freight: 12 Months Ending Jan 2024

Airline Name	Domestic	International	Total Pax	% of Tot	Airline Name	Short Tons	% of Tot
UNITED	27,207,697	8,304,506	35,512,203	24.61%	FEDERAL EXPRESS	370,076	15.84%
DELTA	27,495,225	6,301,690	33,796,915	23.43%	UNITED PARCEL	190,707	8.16%
JETBLUE AIRWAYS	14,974,975	6,687,406	21,662,381	15.01%	UNITED	183,452	7.85%
AMERICAN	13,755,075	3,571,197	17,326,272	12.01%	DELTA	110,506	4.73%
SPIRIT AIRLINES	4,812,056	0	4,812,056	3.34%	KALITTA AIR LLC	110,372	4.72%
SOUTHWEST AIRLINES	3,184,497	0	3,184,497	2.21%	ATLAS AIR	83,941	3.59%
ALASKA AIRLINES	2,364,576	0	2,364,576	1.64%	AMERICAN	80,962	3.47%
AIR CANADA	0	1,808,428	1,808,428	1.25%	AIR TRANSPORT INT'L.(BAX Inc.)	79,887	3.42%
BRITISH AIRWAYS	0	1,698,310	1,698,310	1.18%	LUFTHANSA	54,666	2.34%
AIR FRANCE	0	1,205,516	1,205,516	0.84%	BRITISH AIRWAYS	53,805	2.30%
EMIRATES AIRLINES	0	1,078,994	1,078,994	0.75%	KOREAN	49,711	2.13%
VIRGIN ATLANTIC	0	1,039,460	1,039,460	0.72%	CARGOLUX AIRLINES	47,939	2.05%
AVIANCA	0	998,609	998,609	0.69%	CATHAY PACIFIC	47,136	2.02%
LUFTHANSA	0	871,792	871,792	0.60%	CHINA AIRLINES	45,247	1.94%
AER LINGUS	0	762,736	762,736	0.53%	ABX AIR INC	38,663	1.66%
TURKISH AIRLINES	0	758,066	758,066	0.53%	VIRGIN ATLANTIC	37,554	1.61%
EL AL	254	646,773	647,027	0.45%	AIR CHINA	33,415	1.43%
SAS	0	576,163	576,163	0.40%	CHINA CARGO AIRLINES	33,294	1.43%
IBERIA	0	565,570	565,570	0.39%	ASIANA	30,980	1.33%
LATAM AIRLINES	0	559,677	559,677	0.39%	TURKISH AIRLINES	30,086	1.29%

Passengers & Freight by Market - 12 Months Ending

Market	Passengers	Freight (Short Tons)
TRANSATLANTIC	26,645,210	855,543
CANADA	4,294,206	8,339
CARIBBEAN + BERMUDA	8,606,051	11,486
CENTRAL AND SOUTH AMERICA	4,527,697	60,547
DOMESTIC	92,424,955	983,969
MEXICO	2,427,288	12,889
TRANSPACIFIC	2,878,547	395,015
PUERTO RICO	2,471,280	8,209

Additional Data

Airline Schedules (ADI): Non-Stop Destinations

	Region	Flights (Daily)	Cities
Domestic	Domestic	2146.1	109
	Puerto Rico	37.0	3
	Total	2,183.1	112.00
International	Canada	167.7	8
	Caribbean & Bermuda	169.8	24
	Central & South America	89.8	20
	Mexico	47.1	5
	Transatlantic	284.5	53
	Transpacific	36.8	11
	Total	795.8	121.00
Total	2,978.9	233.00	

Airline Schedules (ADI): Carriers & Aircraft Type

	Aircraft Type	Flights (Daily)	Carriers
Domestic	Commuter	776.5	4
	Narrow Body	1353.4	10
	Wide Body	53.2	4
	Total	2,183.1	18.00
International	Commuter	160.0	5
	Narrow Body	324.5	21
	Wide Body	311.3	58
	Total	795.8	84.00
Total	Total	2,978.9	102.00

Passenger Demographics (ACI ASQ Surveys - 2023)

Transport Mode	Trip Type	Gender
Bus/Shuttle	Business	F
Other	Leisure	M
Private car dropped off by someone	Annual Flights	Residency
Private/Company Car	1-2	United States
Rail/Subway	3-5	Other
Rental Car	6-10	Connect
Ridesharing (e.g. Uber)	11-20	Local Origin/Destination
Taxi/Limo	21+	Connecting

Ground Transportation

	Curr Month	% Change		Curr Month	% Change
<i>Paid Parked Cars</i>	328,380	-4.5	<i>Total Air Train Passengers</i>	2,398,388	-11.7
<i>GTC Bookings</i>	0		<i>Paid Howard Beach Passengers</i>	110,083	-4.1
<i>Airport Coach Passengers</i>	0	-100.0	<i>Paid Jamaica Passengers</i>	483,070	20.4
<i>Taxis Dispatched</i>	276,071	-14.2	<i>Paid EWR Passengers</i>	163,589	-8.3
			<i>On-Airport (Unpaid) Passengers</i>	1,641,646	-18.9

Airlines for American Carriers (USA)

	Curr Month	% Change
<i>Freight:revenue ton miles (000)</i>	0	

Regional Airports: Other

	Curr Month	% Change
<i>TEB flight movements</i>	12,047	-0.2
<i>ISP Total passengers</i>	108,715	
<i>HPN Total passengers</i>	170,775	0.5