

*N. J. Periodical*

NEW JERSEY  
PUBLIC LIBRARY  
APR 18 1967

**March  
1967**

# New Jersey *Outdoors*



## *Wildlife Week Theme*

# This Is Your Land

**The observance** of National Wildlife Week for 1967 commences this month. Using the theme of "This Is Your Land," the popular annual conservation activity focuses public attention on Federal, state, and local lands administered by government agencies in the public interest.

First established by Presidential proclamation in 1938, National Wildlife Week has been sponsored annually by the National Wildlife Federation and its state affiliates, in New Jersey the State Federation of Sportsmen's Clubs. This year's observance starts with the week of March 19-25 but will continue throughout the remainder of the year. Previous Wildlife Week themes have centered on such conservation concerns as saving endangered wildlife, conservation education, water pollution, outdoor recreation, chemical pesticides, and wetlands for waterfowl.

"The 1967 Wildlife Week observance," says Thomas L. Kimball, Executive Director of the National Wildlife Federation, "is aimed at making every American citizen aware of his part ownership of more than 870 million acres of land administered by local, state, and Federal government agencies. These lands may be as close as a few-acre city park a few blocks from his home or as far away as a national forest or park hundreds of miles from his front door. But until every citizen becomes aware and takes an active interest in his stake in these public lands, they cannot be administered and managed to best serve the common good of all the people. The subject of this 1967 Wildlife Week theme should be of vital interest and concern to everyone interested in conservation, outdoor recreation, and proper use of America's natural resource heritage." #



## State of New Jersey

Richard J. Hughes  
Governor

### Department of Conservation and Economic Development

Robert A. Roe  
Commissioner

### Division of Fish and Game

L. G. MacNamara  
Director

### Fish and Game Council

David H. Hart, Chairman  
Cape May ('68)

Joseph L. Alampi,  
Franklinville ('67)

Ralph Allocca,  
Colts Neck ('67)

Charles Cane,  
Rosemont ('68)

Jules W. Marron, Sr.,  
Newton ('69)

George H. McCloskey,  
Flanders ('69)

G. Albert Reid,  
Linwood ('70)

Raymond T. Richardson,  
Pt. Monmouth ('68)

Fred Space,  
Sussex ('67)

Fred H. Totten,  
Ringoos ('69)

Raymond G. Wilson,  
Mount Holly ('70)

### Public Relations

William E. Peterman,  
Supervisor

### Law Enforcement

William P. Coffin,  
Chief Conservation  
Officer

Newman Mathis,  
Chief—Coastal Patrol

### Wildlife Management

George N. Alpaugh,  
Chief of the Bureau

### Fisheries Management

Robert A. Hayford,  
Chief of the Bureau

# New Jersey *Outdoors*

Published monthly by the State of New Jersey Division of Fish and Game  
in the interest of conservation and restoration of wildlife and  
the betterment of hunting and fishing in New Jersey.

## In This Issue

|  |                    |
|--|--------------------|
| This Is Your Land .....                | Inside Front Cover |
| Tryout Trout .....                     | 3                  |
| Industrial Pollution and Fishing ..... | 7                  |
| Outdoor Recreation Planning .....      | 10                 |
| Existing Federal Gun Controls .....    | 14                 |
| What's New at the Fish Hatchery .....  | 16                 |
| 1967 Fishing Regulations .....         | 24                 |
| Conservation Stamps .....              | 32                 |
| Fur, Fin and Campfire .....            | 33                 |
| Scarlet Oak .....                      | 34                 |
| Council Highlights .....               | 36                 |
| Manchester Tract .....                 | 38                 |
| Violators Roundup .....                | 39                 |

### Cover—"Sucker Fishing"—Ned Smith

Fishing for suckers in the late winter and early spring can be great sport and plenty rewarding. It also gives the fisherman a chance to practice before trout season, as noted in the article starting on page 3.

Vcl. 17, No. 9

March, 1967

Publication Office: The Division of Fish and Game

P. O. Box 1809, Trenton, New Jersey 08625

Editor: R. Adams

Second class postage paid Trenton, N. J. 08608, and additional mailing office.

Subscription: \$2.00 a year, by check or money order, payable to Division of Fish and Game. Cash is forwarded at sender's risk. No stamps please.

Change of address: Should be reported directly to the Editor. Send both old and new address. The Post Office will not forward copies unless forwarding postage is provided by subscriber. Copies not delivered through failure to send change of address six weeks in advance cannot be replaced.

All unsolicited material is sent to the magazine at the risk of the sender. Permission granted to reprint with credit to **New Jersey Outdoors**.

**New Jersey State Library**



# Tryout Trout

*One of the best ways to get in a bit of practice for trout fishing before the season opens is to go sucker fishing*

By Pat Kelly

There he sat, one of the best trout fishermen I know. True, Tom is still just a young fellow. But, he spends just about all of his spare time during trout season on the streams and he is the most consistently successful trout angler I have ever encountered. He really knows his streams and always seemed to be a true sportsman.

## Questions

Yet, there he sat on a log this March day with his spinning rod, fishing.

What bothered me most were two questions. First, what was he doing there apparently dreaming happily, his rod propped on a forked stick, his line extending limp into the water? Second, was he trout fishing—and trout season weeks away?

## Sucker Fishing

More than a little embarrassed, I walked over to Tom and let him open the conversation. Guess he

sensed my hesitant curiosity and obvious discomfit. He quickly explained, with a grin, that he was sucker fishing in preparation for trout season.

## Senses Not Lost

So that was it. Tom had not taken leave of his senses and resorted to devious ways. His fishing was both sportsman-like and legal. He was fishing in one of the streams that, although stocked with trout, the Division of Fish and Game specifically leaves open to angling during the weeks immediately prior to trout season to encourage fishing for suckers. It is during this spring period that sucker fishing can be at its very best.

## Peace and Quiet

I settled myself next to Tom on the log, absorbing the bright March sunshine and warming to my friend's welcome. We both watched

## . . . Tryout Trout

the rod tip, the line where it entered the water, and the rather roily water itself. After several minutes of rambling talk about spring, fishing, the weather, and more fishing, Tom drew in his line. His terminal tackle consisted of one fairly heavy split shot and a number eight hook with a numbed-looking night crawler impaled thereon.

### **A New Bait**

With care Tom removed the half-frozen worm from his hook and selected a fresh, lively crawler from his bait can set in the sun. He slipped the point of the hook through the skin of the worm a couple of places and flipped the cast out into the head of the pool. The weighty split shot made casting easy, and, more important, took the bait quickly into the deepest part of the hole as the current caught the line.

### **A Fish**

The new bait seemed to be the answer. Within minutes, in fact before Tom had a chance to set

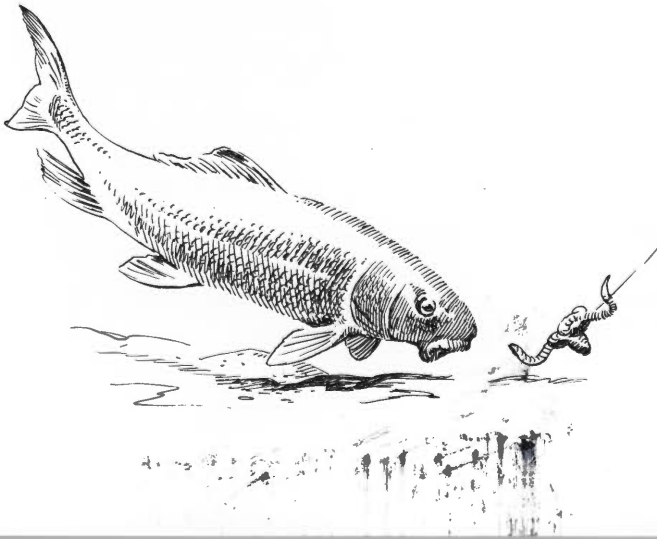
the rod on the forked stick, the rod tip quivered, the line drew taut. Tom gave some slack, lowered the rod some, and then upped the rod smartly to set the hook. The fish was on, without a doubt.

### **Fair Fight**

The fight the sucker gave was stubborn, strong, and deep, if not spectacular or flashy. But, it was a good enough battle and as much of an exhibition as many a similar-sized trout would have put up in early season, cold water. Tom even used a landing net to lift the subdued fish from the water. Part of the "practice routine," Tom pointed out.

### **The Theory**

After baiting up and casting into the pool again, Tom expounded more on this idea of practice fishing for trout, courtesy of the lowly sucker. He allowed that just getting out fishing has two excellent, basic effects. It gives the fisherman the "feel" of the streams and the outdoors and it helps to let off the "steam" that seems to build up in anglers before the trout season.



Even with frigid, somewhat turbid water, such as it was this day, the fishing could be a reasonable facsimile of angling for trout. Many is the time, during the early part of the season, that the trout hug the very bottom of deep holes and show interest in only the deepest fished baits or lures. Some of the largest trout taken each year are caught on worms that are still fished right on the bottom of deep pools.

### On a Nymph

As though to prove a point, Tom drew in his line and bait, clipped off the hook and tied on a number 12 artificial nymph. It looked like a stone fly creeper. He flicked the lure out, let it sink, then worked it slightly. After several tries Tom must have felt a hit for he suddenly whipped up his rod tip and reeled in rapidly. This set the hook and a pitched battle followed. Another good sucker. Now I could really agree, this was a good way to get ready for trout fishing.

### Uses Fly Rod

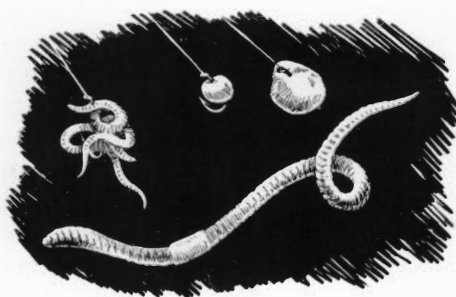
Tom rounded off his comments on nymph fishing for suckers by adding that he ordinarily would prefer to use his regulation fly rod rather than the spinning outfit, which seemed to me to have done a good job. He further explained that he actually has taken, incidental to trout fishing, an occasional sucker on a conventional wet fly. This has tempted him to experiment seriously along this line of sucker fishing.

Replacing the plain hook and a

worm—surely his favorite early season sucker bait—, Tom settled down in his original seat and mood and reflected more on sucker fishing in its relation to trout angling. He described how the suckers leave the large pools and lakes, where they spend the winter, and run up the streams to spawn when the water commences to warm and the suckers feel the urge. It is at such times that the best action is possible, for the suckers are more active and apt to be found in runs, riffles, and pockets, as well as the pools.

### Other Baits

Although even in the warmer water the worm would still be the top bait, Tom maintained that other baits could be fine. Dough balls, pieces of cheese, chunks of sucker meat, various grubs, and most any aquatic insects. Since the suckers often eat quantities of



*Good baits to use for suckers include garden worms, night crawlers, salmon eggs, and dough balls among others*

their own spawn, or at least the eggs of other suckers, during the spawning run, fishing with salmon eggs, or freshly collected sucker eggs, can be most productive. And,

## . . . Tryout Trout

what better rehearsal for single eggng for trout when the season opens?

All in all, the opportunity offered by sucker fishing to practice fish for trout is a wide open field. From worms to nymphs and salmon eggs to wet flies, the type of fishing possible is broad. I even asked Tom if he had ever taken a sucker on a dry fly but received only a quizzical stare in response and a quick switch to tackle talk.

### **The Tackle**

Briefly, my friend pointed out that, as far as he was concerned, this practice fishing might just as well be done with his regular trout tackle—spinning rod and monofilament for cold water, deep fishing and fly rod and line for warm water fishing in shallower waters.

For hook sizes he expressed a preference for 8's or 10's for most bait, 12's for nymphs, 14's for salmon eggs, and 16's for sucker eggs. He mentioned that the sucker eggs are easily obtained from the first roe-laden female sucker caught on a worm or other bait. The fresh eggs keep quite well during the cool spring weather or they may be washed and placed in a clean jar with a liberal sprinkling of salt.

### **Where To Go**

After I had left Tom and returned to my parked car, I dug out a copy of the Compendium of New Jersey Fish Laws to get an idea as to where sucker fishing would be legal during the general

closed interval before trout season re-opened in April. I did know that angling was permitted most all times in waters not stocked with trout. But, until I had my unexpected meeting with Tom on the river, I must have virtually overlooked the provisions in the laws that permit angling in portions of certain trout-stocked waters even during a good part of the closed period.

As you most likely know, the closed period, from sometime in early March each year until the re-opening of trout season in April, is set to provide the Division of Fish and Game with time to facilitate the stocking of trout on a state-wide basis. However, to provide opportunity for early season angling and to encourage sucker fishing, certain lakes and portions of streams stocked with trout are kept open to fishing during a part of this time.

Of most importance to the sucker fisherman are the portions of the following three rivers that are open during the period: the South Branch of the Raritan River, the North Branch of the Raritan River, and the Ramapo River. In addition remember the streams, too numerous to mention, that are not stocked with trout and are, therefore, open in general to sucker fishing in open (unfrozen) waters all year. Be sure to obtain a current Compendium and check for the details concerning the portions of streams open and, by process of elimination, the waters not closed.

# Industrial Pollution and Fishing

By R. W. Eschmeyer  
Formerly Sport Fishing Institute

Domestic sewage has ruined many a fishing stream. But, industrial pollution has done even more damage. In the last 50 years there has been a seven-fold increase in industrial production. This big increase has added tremendous volumes of industrial wastes to our streams.

## Waste Discharge

In the United States, more than 10,000 separate plants are discharging these wastes—food processing, meat packing, textile manufacturing, pulp and paper mills, synthetic fibers, rubber manufacturing, steel, oil and petroleum products, metal finishing, coal washing, and many others.

About 6,000 of these plants discharge wastes which decompose in the same way that city sewage does. And, as with city sewage, the decay removes oxygen from the water, making it unsuitable for fish and fish food. The discharge from these 6,000 plants is equal to the pollution effect from the sewage of about 110,000,000 people. In other words, these 6,000 plants do nearly twice as much harm, pollution-wise, as is done by the 8,000 communi-

ties, with a population of 60 million, which discharge raw or inadequately treated sewage into our waters.

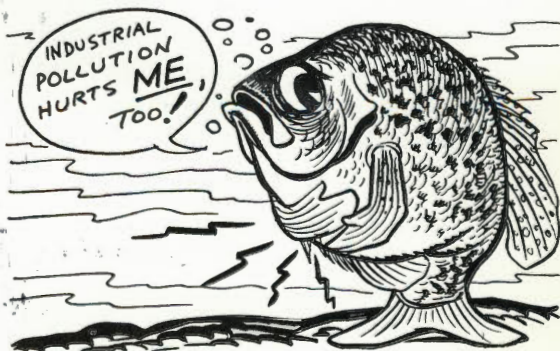
## Other Types

In addition to those mentioned above, about 5,000 plants discharge additional inorganic or undetermined types of wastes. Too, about 10,000 tons of acid are drained into the waters each day from mines.

The acids and chemical wastes are responsible for many of the big fish kills which we read about. They are toxic to fish and to the organisms on which the fish feed.

Certain insecticides used on cotton and other plants wash into streams and kill fish and fish foods.

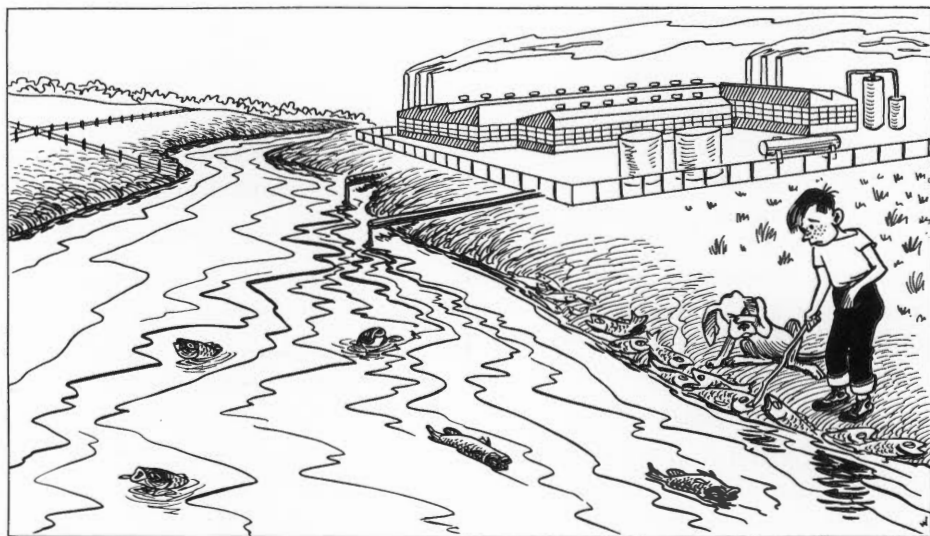
Many polluting industries are



## . . . Industrial Pollution

spending considerable sums of money to find out how they can prevent polluting the waters. On the other hand, some polluters don't seem to care what happens to the

uable by-products. For example, distillery wastes are now used as cattle feeds, and some paper mill wastes are used as road binder. Some of the industries which discharge acids or other toxic wastes can treat them to make them less



*Polluted water — poor fishing*

wastes discharged by their plants. Because of the latter, we need strong pollution laws, rigidly enforced.

Industrial organic waste can be treated in much the same way that sewage is given primary and secondary treatment by cities with modern sewage treatment plants.

### **By-products**

Many industries are learning, too, that much of the material which they have discharged into streams can be converted into val-

harmful, or can keep the wastes from discharging into the streams. Some can find valuable uses for these toxic materials.

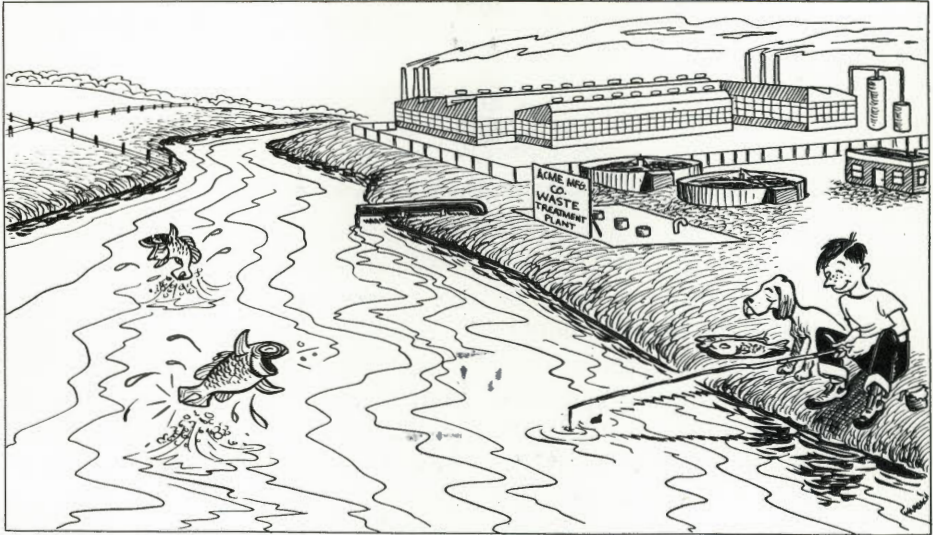
### **Can Have Both**

We must have industrial production, and must maintain and expand it if we are to keep our position of leadership in the modern world and maintain our standard of living. But, we can have both large-scale production and clean waters if we really want both.

You can help prevent pollution,

by insisting on good antipollution laws and by calling attention to the polluters; also, by urging the polluters to find ways of discontinuing

lution exists. If the waters you had hoped to visit are polluted, take your vacation elsewhere. But, be sure to indicate to the chamber of



*Unpolluted water — good fishing*

their destruction of fishing, swimming, and other aquatic sports. An enlightened and determined public can stop most pollution.

#### **Check First**

If you plan to take a vacation trip, check first to see if the waters you intend to enjoy are unpolluted. The state water pollution control agencies and the U.S. Public Health Service now have the results of an overall survey showing where pol-

lution exists. If the waters you had hoped to visit are polluted, take your vacation elsewhere. But, be sure to indicate to the chamber of commerce or tourist bureau why you chose to go elsewhere rather than to its community. The tourist business has become an immense industry. If tourists visited only areas with unpolluted waters, and indicated why they did so, many of our local pollution problems would soon be corrected.

Remember—pollution is a major destroyer of our favorite outdoor sport. #

---

During last year the Division's Pollution Unit activities included the following: 93 reports of pollution received, 63 fish kills investigated, 66 special investigations, 152 routine inspections, 10 special studies, 236 bioassays, and 3,126 chemical analyses.

## Key Values In

# Outdoor Recreation

## Planning

### Part I

By Richard H. Stroud,

Executive Vice President, Sport Fishing Institute, Washington, D. C.

The sight of large numbers of people tramping over wild landscape, probably out fishing or hunting, and in the process, doubtless also bird-watching, picnicking, and sightseeing, is rather disturbing to an isolationist minority within conservation who want to know that the resources are there but do not want them disturbed. These resources isolationists also include in their number those who abhor the harvesting of nature's abundant annual surpluses of fish and game, yet who ignore or are ignorant of the harmful effects on fish and game from overcrowding, undernourishment, disease, etc.

#### Conservation Broader

By contrast, the majority of conservationists believe, no less strongly, that wise utilization of renewable natural resources is the proper course for conservation. Utilization in this sense considers that controlled use of soil, water, timber, grass, fish, and wildlife is beneficial in terms of fulfilling *people* needs. This philosophy envisions programs aimed at producing continuous high yields of fish,

game, timber, etc., and regards resources management as a means to assure continuous supplies for continued use in the future. It therefore includes selected resource isolation when needed to assure desirable preservation of scarce, especially sensitive, or endangered resources.

This conflict between the philosophies of resource isolation and resource utilization may well be the overriding conservation issue of the sixties. However troublesome these facts may be, "conservation" means different things to different people, and irreversible changes are modifying the physical and social features of America.

Obviously, America is vastly different now than when the pilgrims first set foot on Plymouth Rock. With increasing population, it can neither be returned to wilderness nor prevented from changing further. Nevertheless, some folk, anachronisms in twentieth-century America, have apparently dedicated their energies to belligerent opposition to all change. The bulldozer, the engineer and the con-

tractor have been identified as the Philistine; in many instances the citizenry itself is regarded as the barbarian horde.

### III-Conceived Stress

Because of this philosophical schism, concern has been voiced that the conservation movement has become divided as to objectives. Such division appears to have been the regrettable fall-out from a general lack of discrimination that has accompanied the recent "new look" emphasis in outdoor recreation. Unfortunately, the highly significant findings of the Outdoor Recreation Resources Review Commission have been badly misinterpreted, even misrepresented. As a result, much misdirected stress has been placed on the so-called "simple pleasures" of driving, walking, picnicking, and sightseeing as making up the central thrust of outdoor recreation.

### Cleavage

The creation of the U.S. Bureau of Outdoor Recreation, followed quickly by the White House Conference on Natural Beauty, seems to have confused many conservationists. This is because these events have emphasized the superficial at the expense of the fundamental aspects of conservation. The newly-focused spectre of millions of picnickers, hikers, motor vehicles, posypluckers, sightseers, etc., invading and endangering the sanctity of painfully safeguarded Natural Temples, often very sensitive to human influence, has come as a traumatic shock to the preser-

vationists and terrorized them. This is the cause of the cleavage as to objectives that has dismayed some conservation leaders.

Until comparatively recently, conservation in America has featured a series of rather panicky movements, leap-frogging from crisis to crisis in last-ditch efforts to fence off and isolate remnants of specific scarce resources threatened with final destruction. Thus, emotionalism has provided the principal fuel for reargued actions that have characterized much of conservation in recent decades. As a result, the erroneous notion has become firmly implanted in many minds that "preservation"—in the sense of isolation—is synonymous with "conservation". It should now become recognized that "preservation" is only part of a more mature conservation philosophy.

The distinguished former chairman of the Outdoor Recreation Resources Review Commission, Laurance Rockefeller, correctly commented, recently, that "unswerving hostility to development condemns the conservationists to a rear guard action," a defeatist course. Recognizing that many more houses, bridges, highways, etc., are going to be built, Mr. Rockefeller stated that "the important question is not if, but how."

### Jobs or Fish

Conversely, the equally valid demand by conservationists for water pollution abatement has generally been greeted with the rebuttal: "What do you want, jobs or

## . . . Outdoor Recreation

fish?" The correct answer, according to Maine Senator Edmund S. Muskie, was and is: "Both." This noted Chairman of the Senate Subcommittee on Air and Water Pollution has done all Americans a great service by putting the "new look" of conservation in proper context, viz: "The preservation of America's natural beauty really boils down to proper resources development and use." In these words, he has distilled the essence of the President's unprecedented congressional *Message on Natural Beauty*, dated February 8, 1965.

### **Misrepresentation Confusing**

The main problem seems to be one of confusion resulting from misrepresentation and misrepresentation of the data and findings in several key ORRRC Study Reports. These data concern participation by Americans in various outdoor recreation activities, and the high degree of interdependence among them. This has led to a seriously mistaken notion by newly attracted generalists that driving and walking for pleasure, picnicking, sightseeing, etc., have suddenly displaced fishing and hunting as the principal outdoor pursuits by Americans. Equally mistaken; they seem to believe that the naive magic of providing X-numbers of picnic tables and litter barrels, etc., will solve the myriad problems that have so long confounded resource specialists! The only trouble with this simplified approach to re-

source conservation is that it just doesn't do the job. It begins with erroneous assumptions based on misinterpretation of complex or questionable data, and proceeds to illogical and incorrect conclusions.

Close examination of recreation data, indeed, makes it increasingly clear that the substantial (if not principal) thrust of several "recreation activities," particularly the relatively passive picnicking, driving, and walking for pleasure, are ancillary to more dominant traditional outdoor interests. If so, it would be a major blunder to deemphasize the role of fishing and hunting in outdoor recreation. On the contrary, it is necessary to re-emphasize the traditional outdoor sports as constituting key values in outdoor recreation planning.

Some 68 million individual Americans of all ages and inclinations probably engaged in fishing and hunting last year, at least occasionally. Of these, about 47 million apparently fished and hunted more or less regularly as the principal means of satisfying their outdoor recreational needs. Indeed, according to Study Report 20 of the Outdoor Recreation Resources Review Commission, about 38 percent of American adults (18 years or older) fish regularly and 17 percent hunt regularly as means of relaxation.<sup>1</sup> Over half of all hunters are known to fish as well as

<sup>1</sup> Mueller, E., G. Gurin, & M. Wood. 1962. Participating in outdoor recreation: factors affecting demand among American adults. ORRRC Study Report 20 (94 pp.), U.S. Gov. Printing Office, Washington, D. C.

hunt. Therefore, excluding duplication, a net 46 percent of American adults fish and/or hunt.

Swimming, unfortunately combined with "going to the beach," is loosely (and perhaps erroneously) credited with similar popularity (45 percent participation). It is at least possible that "going to the beach," per se, may be as closely related to picnicking as to swimming, thereby leaving actual swimming participation very much obscured. Similarly, upon close examination, so-called "driving for pleasure" turns out actually to have been analyzed in terms of the quite different concept of "automobile riding for sightseeing and relaxation," credited with 69 percent of adult participation. Boating and canoeing was credited with participation by 28 percent of adults, hiking 19 percent, camping 15 percent, nature and bird walks 14 percent.

### **Traditional Sports**

It appears that the two-thirds (66 percent) of American adults who were said to engage in picnics obviously do so, at least in substantial measure, as part of other recreational activities. In proper context, picnicking should probably be regarded, in large part, simply as a convenient method of eating while outdoors. Certainly, the primary role of picnicking as a major recreational objective remains subject to serious doubt.

A high degree of interdependence is apparent among various outdoor activities. Fishing and

hunting, for example, are known to account for more than 80 percent of boat use. Eighty-seven percent of those camping indicated that fishing and hunting are their principal purposes in roughing it in sleeping bag, tent, or trailer. The hiking factor in camping can be substantially accounted for by those remaining portions of fishing and hunting not done from boats. Similarly, one-third of hikers using wilderness areas indicated that their main objective was fishing; 75 percent cited it among several goals of wilderness trips. To a highly significant extent, nature and bird walks may also prove largely incidental to these same objectives.

Quite naturally, the vast majority (90 percent or so) of all campers found it necessary to drive cars in order to reach their campsites, unquestionably "sightseeing" en route and in vicinity, and also "picnicked" in order to eat inexpensively during the trip away from home. How else could most of them have eaten after their arrival—or gotten where they were going (except for minor use of horses)? Thus, camping mostly boils down to being a convenient and inexpensive means of accommodating outdoor needs for room and board, in substantial measure for the purpose of fishing and hunting. Rather obviously, too, the majority of campsites must generally be reached by "going to the beach"—the waterside location universally recognized as the common recreational site.

*Part I of two parts*

# Existing Federal Gun Controls

Many newspaper articles and editorials dealing with proposed federal firearms legislation indicate an ignorance of existing federal gun controls.

The Federal Firearms Act of 1938, as amended, controls the movement in interstate or foreign commerce of firearms of all types and handgun ammunition. It provides, among other things, that:

- All manufacturers, importers, and dealers in firearms, handgun ammunition, and components must obtain a federal license.

- All licensed manufacturers, importers, and dealers must maintain complete records of shipments and sale of *all* firearms.

- No person may lawfully buy, sell, pawn, or transport interstate *any* stolen firearm or handgun ammunition.

- No person who is under indictment or who has been convicted of a crime punishable by imprisonment for a term exceeding one year in *any* court in the United States may lawfully transport *any* firearm or handgun ammunition, or ship or receive such firearm or ammunition in interstate or foreign commerce.

- No fugitive from justice, including persons who have fled to avoid prosecution for a crime punishable by imprisonment for a term

exceeding one year or to avoid giving testimony in any criminal proceeding, may lawfully transport *any* firearm or handgun ammunition, or ship or receive such firearm or ammunition in interstate or foreign commerce.

- No person may lawfully receive, possess, or dispose of *any* firearm or ammunition stolen while moving in or which is a part of interstate or foreign commerce.

- No person may lawfully receive, possess, or dispose of *any* firearm from which the serial number has been removed, altered, or obliterated.

- No dealer, *including mail order dealers*, may ship any firearm into any state which requires a permit to purchase such firearm without receiving evidence of the possession of such permit by the prospective purchaser.

The National Firearms Act of 1934, as amended, imposes a tax and requires registration upon the making or transfer of machine guns and certain other kinds of firearms. It provides, among other things, that:

- Every person possessing a firearm (as defined in the Act) must register, with the Secretary or his delegate, the number or other mark identifying such firearm, together with his name, address, place where

such firearm is usually kept, and place of business or employment, and, if such person is other than a natural person, the name and home address of an executive officer thereof.

• The making or transfer of any of the following firearms requires the payment of a \$200 tax:

(a) All fully automatic firearms, all rifles with barrels less than 16 inches in length and all shotguns with barrels less than 18 inches in length;

(b) All firearms made from a rifle or shotgun and having an *overall* length of less than 26 inches;

(c) All pistols with shoulder stocks and having barrels less than 16 inches in length;

(d) All firearms with combination rifle and shotgun barrels less than 12 inches in length;

(e) All mufflers and silencers.

• The transfer of any of the following firearms (defined as "any other weapon" under the law) requires the payment of a \$5 tax:

(a) All shot pistols or revolvers;

(b) All firearms with combination rifle and shotgun barrels *at least* 12 but less than 18 inches in length;

(c) All weapons or devices (ex-

cept conventional pistols or revolvers) capable of firing a shot if such weapons or devices can be concealed on the person (Example: all Handy Guns, tip-ups, burglar guns, cane guns, pen guns, etc.)

Each of these federal laws provides a maximum fine of \$2,000 or imprisonment up to 5 years, or both, for conviction of violation of any of its provisions.

The postal laws and regulations provide that concealable firearms, such as pistols and revolvers, may not be shipped through the mails except to certain classes of persons (e.g., military, enforcement, postal) under certain conditions. Conviction of a violation carries a penalty of not more than \$1000 fine or not more than 2 years in prison, or both.

The Federal Aviation Act of 1958, as amended, provides that no person, except under special authorization, may carry a deadly or dangerous weapon aboard a commercial air carrier. Conviction of a violation carries a penalty of not more than \$1000 or one year in prison, or both.

Any attempt to control the misuse of firearms in crime by Congressional legislation must take into consideration the *existing federal gun controls*. #

---

Governor Richard J. Hughes recently presented a framed certificate recognizing the state's outstanding achievement in the field of hunter safety to Director Lester G. MacNamara, Attorney General Arthur J. Sills and Colonel John K. Lee, Jr., Field Representative of the National Rifle Association, participated in the ceremony.

# What's New at

## *the Charles O. Hayford State*

# Fish Hatchery

By Edgerton Grant,  
Public Relations

*Photographs by Harry Grosch*

The men responsible for operating New Jersey fish hatcheries are constantly alert for new ideas to improve the rearing of fish for Garden State anglers. Their task is to provide the best quality trout and other species for the fisherman's creel and to do so with the greatest possible economy. All expenses of the Division of Fish and Game in the Department of Conservation and Economic Development are paid for by the state's licensed sportsmen. The hatchery is operated entirely with funds derived from the sale of fishing licenses (\$4.15 resident—\$7.15 non-resident) to some 140,000 anglers and trout fishing stamps (\$2.00 resident—\$5.00 non-resident) to over half these fishermen.

### **One of the Largest**

The Hackettstown Hatchery was first built in 1912 and gradually expanded until it became one of the largest and most famous in the

world. There are about 250 outdoor ponds and pools at the main plant and the East Hackettstown Rearing Station and half as many hatching troughs in the three buildings. These ponds cover 65 surface acres, and, if placed end to end, they would reach nearly ten miles.

### **Survey**

Commissioner Robert A. Roe ordered a thorough survey of hatchery facilities early in 1966. This was necessitated by the serious drought of the early 60's and the growing demands on the water table of the state's increasing human population. Federal and state fish culture and geology experts made recommendations leading to implementation and planning of a number of improvements.

Water is a basic requirement for fish to grow and thrive. The hatchery ponds hold 65 million gallons, and a daily turnover of several million gallons is required. A number



*The Fish Hatchery is always a favorite point of interest in New Jersey*

of wells are being drilled at locations recommended by the state Bureau of Geology to increase the water supply. Plans to renovate ponds to increase the rate of water exchange, cutting growth of vegetation, and aiding cleaning, can be implemented when the additional water is available. Youths from the Economic Opportunity Program have already converted several short pools into longer ones, increasing their versatility and saving considerable time in cleaning and maintenance.

#### **Electric Pumps**

Oxygen dissolved in the water is vital to fish life. Low water flows reduce the oxygen supply, especially in the summer when other or-

ganisms are actively competing with the fish. Aerating the water by means of pumps re-charges the oxygen supply. New electric pumps are being installed, starting with the most critical ponds, to replace cumbersome gasoline pumps. Tests have shown that installations during 1966 nearly doubled the dissolved oxygen supply. This reduces the need to cut back feeding during the summer. The pumps also keep ponds more free of ice in winter, permitting fish to be fed without cutting holes.

#### **Night Lights**

Electric poles for the pumps were erected through the cooperation of the New Jersey Power and Light Company. They made possi-

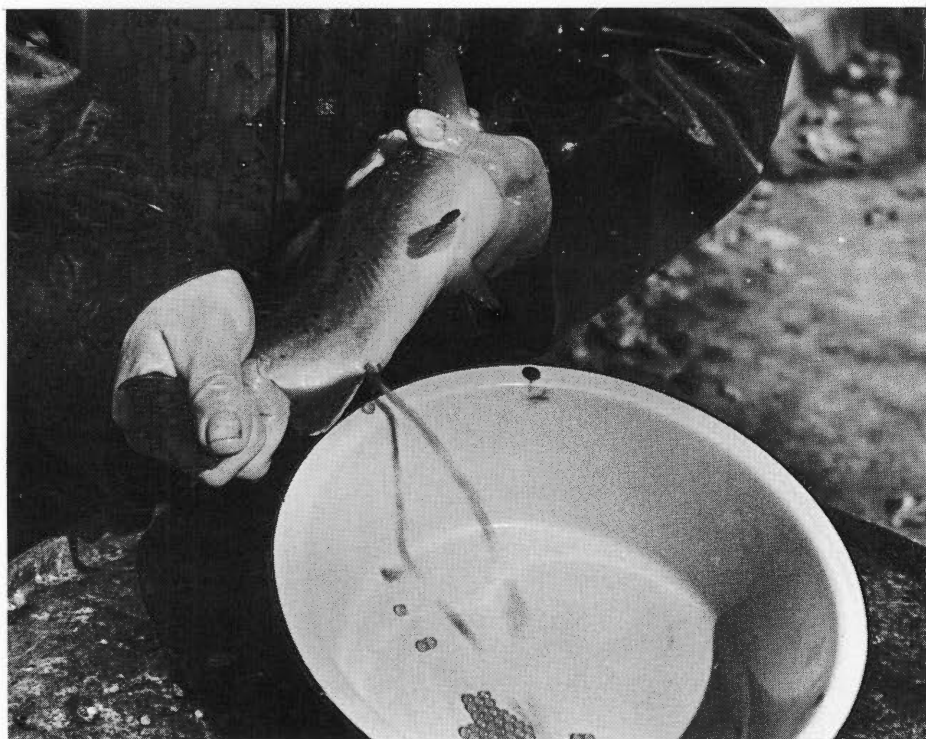
## . . . Fish Hatchery

ble the installation of lights, easing surveillance of the fish during the critical night hours.

### **First the Eggs**

The life of a trout, the principal species raised at the hatchery, starts with the egg. Eggs are taken and fertilized artificially from October through December. Hatching time depends on water temperature, which is 52 degrees in the

ployed in recent years to advance the initial spawning date. In 1966, both brown and rainbow trout egg taking started the earliest in history, and the condition of the breeder fish indicated that it could start even earlier in the future. The advantage of early spawning is that trout have additional time to grow before they are stocked in the spring for their second or third year. To add further, a September spawning strain of rainbows, im-



*The life of a trout begins with the egg and the milt*

nursery building. At this temperature, brook trout hatch in 42 days, brown trout in 35 days, and rainbows in 28 days.

Selective breeding has been em-

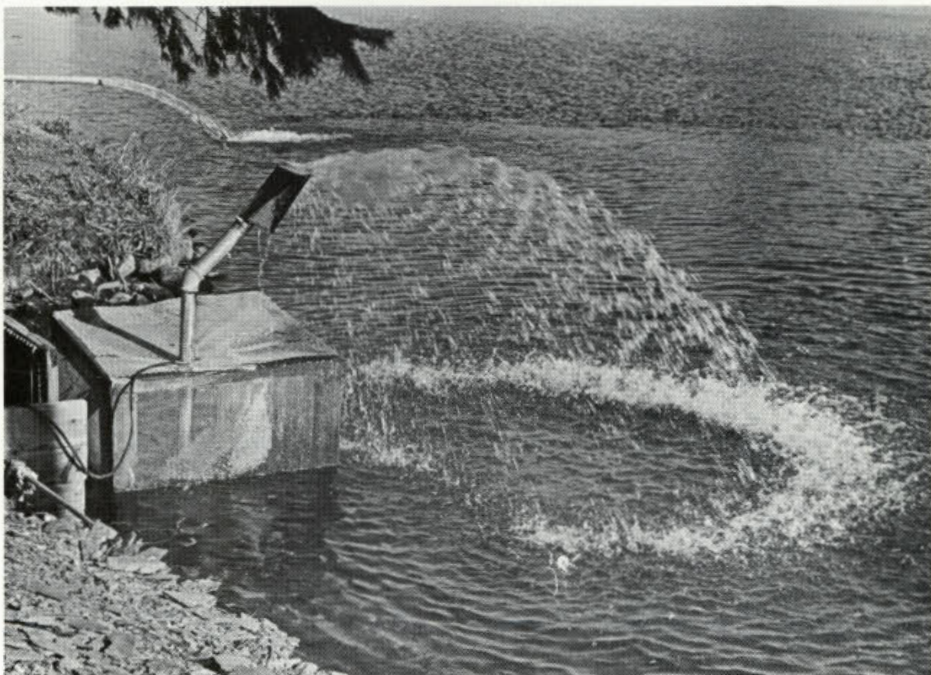
ported from the Greenwalk Hatchery in Pennsylvania, is being developed with the potential of a two-month gain. Experiments are being made using jars instead of trays

to hatch eggs, cutting down the time consuming job of picking out dead eggs.

### **Feeding**

Teaching the baby trout or "fry" to eat is a tricky task. Initially they are fed finely chopped liver several

it can now be purchased in bulk, effecting substantial savings. Meat and fish must still be used occasionally to provide certain necessary proteins. Purchase of a pellet blower for automated feeding is being investigated, although



*Aerating the water by means of pumps re-charges the oxygen supply*

times a day. As they grow, the number of feedings is reduced and the quantity and variety of food increased. Larger trout are fed once a day, and over a million pounds of food are used annually.

### **Dry Pellets**

Dry food in pellet form has now been developed to a point where its rate of conversion into trout growth is substantially better than meat. With wider use of dry food,

some hand feeding is desirable, since it affords an opportunity to observe the condition of fish.

### **Sanitation**

Ponds and pools must be kept thoroughly clean. Since a hatchery is a more crowded environment than a lake, there is always a danger of disease. New Jersey pioneered in the study of fish diseases and is making new advances with the hiring of a full-time biologist

## . . . Fish Hatchery

in this field and the fitting out of additional laboratory space and equipment.

After fish are moved into outdoor ponds in the spring, samples from each pond are measured monthly. Slow-growing trout are given more room, and different sizes are separated to prevent cannibalism.

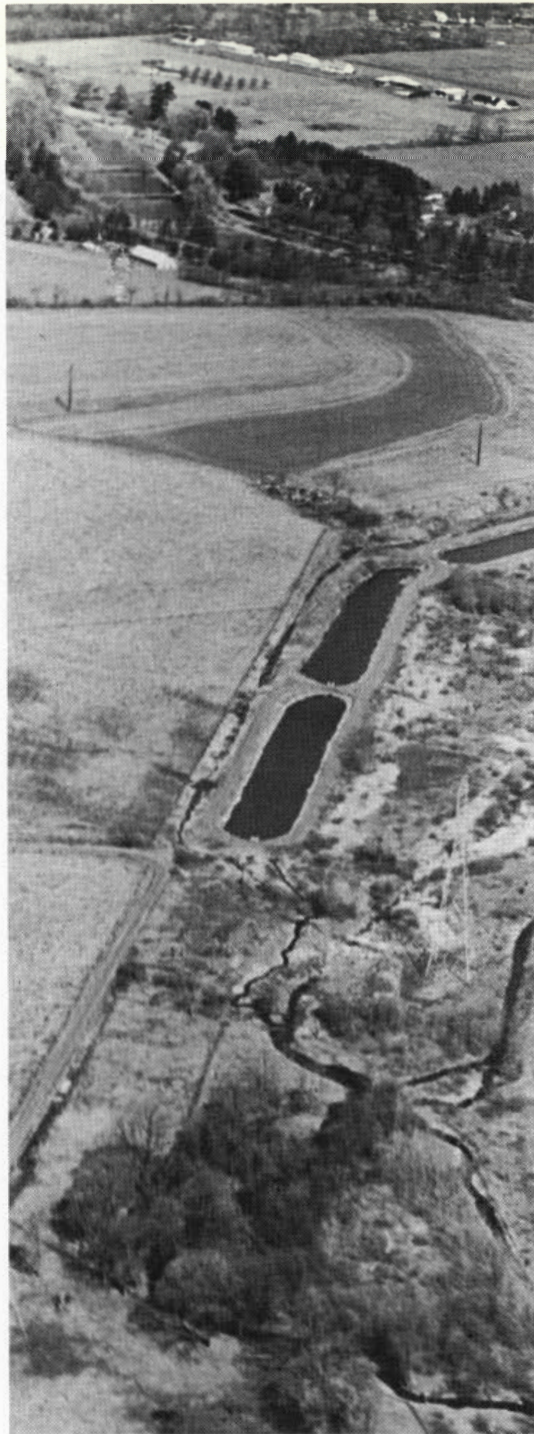
### **New Facility**

About 30 men are employed at the hatchery, and youths from the Warren Residential Group Center assist with routine tasks. The men work long hours in all kinds of weather, especially during the winter and the stocking season. Recently, a new eating room, with shower facilities and personal lockers, was provided, adding to employee morale.

### **The Purpose**

The purpose of the hatchery is to raise fish for the enjoyment of Garden State anglers. About 750 miles of stream and 60 lakes, all open to public fishing, are stocked annually with over half a million trout. New Jersey pioneered in the stocking of catchable-size trout, and the average size of trout stocked has exceeded  $9\frac{1}{2}$  inches for many years. Each major stream gets a consignment of "sugar" trout, over-age breeders that may

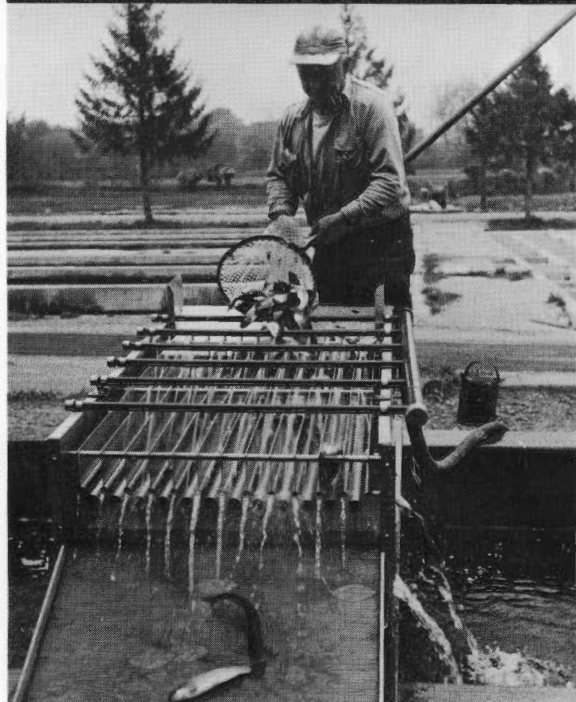
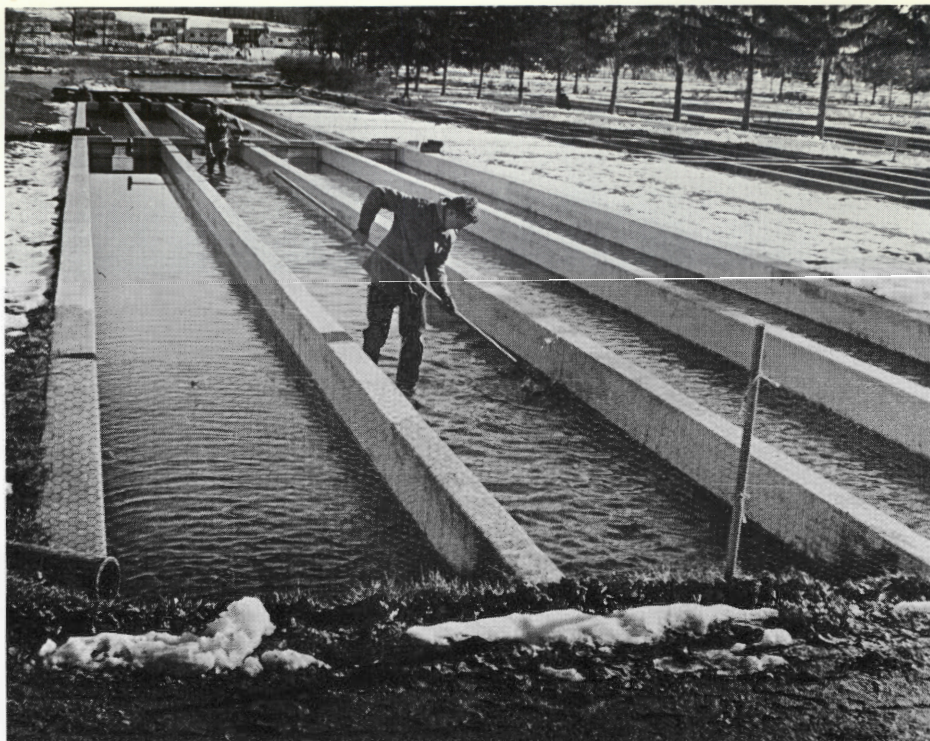
*Aerial view of the Hatchery shows the complex nature of the plant and the encroachment of housing developments*





March, 1967

21



*A number of pools, above, have been lengthened to increase their versatility and save on maintenance and cleaning time*

*As the trout grow they are sorted, left, according to size to prevent cannibalism and facilitate stocking*

## . . . Fish Hatchery

run as large as 20 inches. There are six specially equipped trucks with a capacity of 3,000 fish, and several smaller tanks with aerators are mobilized at peak stocking periods.

### **Species Raised**

A large number of large and smallmouth bass, bluegill sunfish, and catfish are raised annually. They are stocked in lakes open to

brown and rainbow, tiger trout, and West Virginia Centennial golden rainbow. Donaldsons are already proving their rapid-growth potential in Spruce Run Reservoir; golden trout are a popular display for hatchery visitors, and they will be stocked in suitable waters when more are available.

### **Visitors Welcome**

Visitors are welcome from 8:00 a.m. to 4:30 p.m. weekdays and 8:00 a.m. to 6:00 p.m. Satur-



*Recently a new eating room, shower facilities, and personal lockers have been provided at the Hatchery for personnel*

public fishing where it has been determined that improved angling should result. Special trout strains are reared experimentally, including Donaldson rainbow, sea-run

days, Sundays, and holidays. Over 125,000 people visit the hatchery annually. Groups of 15 or more may arrange for a guide by calling in advance. #

---

During the 1966 season spring stocking of adult trout in New Jersey totalled 618,930 trout—228,740 pre-season and 390,190 in-season.

# 1967 Fishing Regulations

Following the public hearing held at the State Labor Building on August 9, 1966, the Fish and Game Council, of the New Jersey Department of Conservation and Economic Development, adopted the following regulations for 1967 fishing. As provided by R.S. 13:1B33, these regulations are known as the Fish and Game Code and supersede the statute laws insofar as these items are concerned and all previous code regulations respecting fishing are hereby rescinded. Code regulations are effective until amended or repealed.

## Trout

1. The trout season for 1967 shall commence January 1, 1967, and extend to midnight, March 5, 1967; except that during this period Spruce Run Reservoir and Creek shall be closed to angling between the tip of the peninsula known as the Boat Launching Site and the jetty located behind the Water Policy and Supply Administration Building, upstream to the dam at Newport, about  $\frac{1}{2}$  mile below Camp Watchung. The trout season shall re-open at 8:00 a.m. EST, Saturday, April 8, 1967, and extend to and include February 29, 1968, except that the waters listed below shall be closed to all fishing from 5:00 a.m. on the dates listed to 5:00 a.m. of the following morning; included in these waters are all feeder and tributary streams for a distance of 100 feet from the main channel. (See separate regulations for Greenwood Lake, and for the Delaware River between New Jersey and Pennsylvania.) The closed hours for waters listed below shall be standard time or daylight saving time, whichever is official in New Jersey on the given date.

### Atlantic County

Birch Park Pond—Northfield—April 24; May 1, 15.  
Hammonton Lake—Hammonton—April 24; May 1, 15.

### Bergen County

Hackensack River—Poplar Road to Westwood Avenue—April 21, 28; May 5, 12, 19, 26.  
Indian Lake—Little Ferry—April 24; May 8.  
Pascack Creek—Dam at Woodcliff Lake to Westwood Avenue Bridge—April 17; May 1, 8, 15.  
Ramapo River—Mahwah Township Line to Doty Road Bridge, Oakland—April 20, 27;  
May 4, 11, 18, 25.  
Saddle River—Lake Street, Upper Saddle River to Hohokus Brook, Glen Rock—April 17, 24;  
May 1, 8, 15.  
Whites Pond—Waldwick—April 24; May 11.  
Wild Duck Pond—Ridgewood—April 17.

### Burlington County

Strawbridge Lake—Moorestown—April 24; May 10.  
Sylvan Lake—Burlington—April 24; May 10.  
Woolman's Lake—Mt. Holly—April 24; May 10.

### Camden County

Back Run—Berlin—May 4, 9.  
Big Lebanon Run—Turnersville—May 4, 9.  
Columbia Lake—Maple Shade—May 4, 9.  
Ellisburg Creek—Ellisburg—May 4, 9.  
Grenlock Lake—Turnersville—May 4, 9.  
Hopkins Lake—Haddonfield—April 19; May 2.  
Munn's Lake—Haddonfield—April 19; May 2, 16.  
Rowands Pond—Clementon—April 19; May 2, 16.  
Square Circle Lake—Gibbstown—April 24.

### Cape May County

Dennisville Lake—Dennisville—April 24; May 8.

### **Cumberland County**

Manantico Creek—Millville—April 24; May 8.  
Mary Elmer Lake—Bridgeton—April 24; May 8.  
Maurice River—Willow Grove to Jessup's Bridge—April 24; May 8.  
Shaw's Mill Pond—Newport—April 24; May 8.

### **Essex County**

Branch Brook Park Lake—Newark—April 21, 28; May 5, 12, 19.  
Diamond Mill Pond—Millburn—April 21, 28; May 5, 12, 19.  
Verona Lake—Verona—April 21, 28; May 5, 12, 19.

### **Gloucester County**

Almonesson Lake—Almonesson—April 20; May 8.  
Harrisonville Lake—Harrisonville—April 18; May 8.  
Iona Lake—Iona—April 18; May 2, 8.  
Logan Lake—Repaup—April 18; May 2, 9.  
Mullica Hill Pond—Mullica Hill—April 18; May 8.  
Raccoon Creek—Ewan to Swedesboro—April 18; May 8.  
Swedesboro Lake—Swedesboro—May 2.

### **Hudson County**

Hudson County Park Lake—North Bergen—April 21, 28; May 5, 12, 19.

### **Hunterdon County**

Alexauken Creek—Route 202 to Delaware River—April 18; May 2, 18, 25.  
Amwell Lake—Linvale—April 19, 26; May 11.  
Capoolong Creek—Pittstown to S. Br. Raritan River—April 20, 27; May 4, 11, 18, 25.  
Delaware—Raritan Canal—Raven Rock to Hunterdon County Line—April 20, 27; May 4, 11, 18, 25.  
Lockatong Creek—Route 12 to Delaware River—April 18; May 2, 18, 25.  
Mulhockaway Creek—Norton to Pattenburg—April 18, 25; May 9.  
Musconetcong River—Lake Hopatcong, Morris County through Morris, Sussex, Warren and Hunterdon Counties to Warren Glen, Hunterdon County—April 21, 28; May 5, 12, 19, 26.  
Raritan River, S. Br.—Morris County Line to Somerset County Line—April 18, 25; May 2, 9, 16, 23.  
Rockaway Creek, N. Br.—Mountainville to Meadow Lane, Rt. 517 to Whitehouse—April 18, 25; May 9.  
Spruce Run—Camp Watchung to Union Bridge Road—April 18, 25; May 9.  
Spruce Run Reservoir—April 18, 25; May 9.

### **Mercer County**

Assumpink Creek—N. J. Turnpike to 100 ft. below Whitehead Road, Mercer County—April 18, 25; May 2, 9, 16, 23.  
Delaware—Raritan Canal—Hunterdon County Line to Yardley Bridge—April 20, 27; May 4, 11, 18, 25.  
Stony Brook—Woodsville to Port Mercer—April 18, 25; May 2, 9, 16, 23.

### **Middlesex County**

Farrington Lake—Near Milltown—May 3, 17.  
Hooks Creek Pond—Cheesequake State Park—April 19, 26; May 3, 10, 17.  
Lawrence Brook—Dam at Farrington Lake to Dam at Main Street, Milltown—April 19, 26; May 3, 10, 17, 24.  
Roosevelt Park Lake—Metuchen—April 19, 26; May 3, 10, 17.  
Wigwam Pond—Jamesburg—April 19, 26; May 3, 10, 17.

### **Monmouth County**

Big Brook—Marlboro—April 20; May 3, 17.  
Englishtown Mill Pond—Englishtown—May 3.  
Garvey's Pond—Navesink—May 1, 17.  
Hockhocks Brook—Tinton Falls—April 20; May 3, 17.  
Manasquan River—Rt. 23 to Allenwood—April 17, 24; May 1, 8, 15, 22.

## . . . Fishing Regulations

Mohawk Pond—Red Bank—April 24.  
Old Mill Pond—Villa Park—April 24.  
Ramanesson Brook—Holmdel—April 20; May 3, 17.  
Shadow Lake—Red Bank—April 24; May 17.  
Shark River Park Pond—Hamilton—May 1.  
Shark River—Hamilton—May 1.  
Spring Lake—Belmar—April 17; May 15.  
Takanassee Lake—Long Branch—April 24; May 17.  
Topenemus Lake—Freehold—April 24; May 15.  
Willow Brook—Holmdel—April 20; May 3, 17.  
Yellow Brook—Colts Neck—April 20; May 3, 17.

### **Morris County**

Beaver Brook—Lincoln Park—May 9, 16.  
Beaver Brook—Rockaway—April 18; May 1.  
Black River—Rt. 206, Chester to Dam at lower end of Hacklebarney State Park—April 20, 27;  
May 4, 11, 18, 25.  
Budd Lake—Budd Lake—May 5.  
Burnham Park Pond—Morristown—May 1.  
Gruendykes Mill Pond—Hackettstown—April 21, 28; May 5, 12, 19, 26.  
Guard Lock—Saxton Falls—April 21, 28; May 5, 12, 19, 26.  
Kakeout Brook—Butler—April 17; May 1, 15.  
Lake Hopatcong—Lake Hopatcong—April 20; May 11.  
Lake Musconetcong—Netcong—April 19.  
Midland Lake—Succasunna—April 17; May 1.  
Mt. Hope Pond—Mt. Hope—April 17; May 1.  
Musconetcong River—see closures Hunterdon County.  
Pompton River—Rt. 23 to D.L. & W. R.R. Bridge at Lincoln Park—April 18, 24; May 2,  
9, 16, 23.  
Raritan River, S. Br.—Rt. 46 to Hunterdon County Line—April 18, 25; May 2, 9, 16, 23.  
Rockaway River—Milton to Boonton—April 17, 24; May 1, 8, 15, 22.  
Speedwell Lake—Morristown—April 26; May 18.

### **Ocean County**

Metedeconk River, N. Br.—Aldrich Road Bridge to Ridge Avenue—April 17, 24; May 1, 8, 15, 22.  
Metedeconk River, S. Br.—Bennetts Mills to Twin wooden foot bridge, S. Lake Drive—April 24;  
May 1, 8, 15, 22.  
Toms River, N. Br.—Holmansville—April 24; May 1, 8, 15, 22.

### **Passaic County**

Barbour's Pond—West Paterson—April 25; May 11.  
Goffle Brook—Hawthorne—April 24; May 8.  
Oldham Pond—North Haledon—April 24; May 8.  
Pequannock River—Macopin Intake to White's Bridge, Hamburg Tpk.—April 17; May 1.  
Pompton River—Pompton Lake to D.L. & W. R.R. Bridge opposite Lincoln Park—April 18, 25;  
May 2, 9, 16, 23.  
Pompton Lake—Pompton Lakes—April 25; May 9.  
Ringwood Brook—Ringwood State Park—April 17, 24; May 1, 8, 15.  
Sheppards Lake—Thunder Mountain, Ringwood Boro—April 17; May 1.  
Wanaque River—Excluding Wanaque Reservoir and Lake Inez, Passaic County—April 21, 28;  
May 5, 12, 19, 26.

### **Salem County**

Hancock's Sand Wash Pond—Salem—April 18; May 10, 16.  
Schadler's Sand Wash Pond—Penns Grove—April 18, May 10, 16.  
Harrisonville Lake—Harrisonville—See closures Gloucester County.  
Maurice River—Jessup Bridge—See closures Cumberland County.

### **Somerset County**

- Lamington River—Dam at Burnt Mills to Jct. with North Branch—April 19, 26; May 3, 10, 17, 24.  
Passaic River—Davis Bridge to Dead River—April 19, 26; May 3, 10, 17, 24.  
Peapack Brook—Dam at Hills Hardware to North Branch Raritan River—April 26; May 3, 10, 17, 24.  
Raritan River, N. Br.—Far Hills to S. Br. Raritan River—April 19, 26; May 3, 10, 17, 24.  
Raritan River, S. Br.—Hunterdon County Line to Dalrymple's Bridge—April 18, 25; May 2, 9, 16, 23.

### **Sussex County**

- Andover Jct. Brook—Rt. 206 to Millers Sheep Ranch—April 17; May 2, 8.  
Big Flat Brook—100 ft. above Steam Mill Bridge on Crigger Road to Delaware River—April 21, 28; May 5, 12, 19, 26.  
Clove River—100 ft. above Colesville Bridge to upper end of Clove Lake—April 27; May 10, 17.  
Cranberry Lake—Cranberry Lake—April 25; May 5.  
Lake Hopatcong—Lake Hopatcong—See closures Morris County.  
Lake Musconetcong—Netcong—See closures Morris County.  
Lake Ocquittunk—Stokes State Forest—April 21, 28; May 5, 12, 19, 26.  
Lake Wapalanne—Stokes State Forest—April 21, 28; May 5, 12, 19, 26.  
Little Flat Brook—100 ft. above Rt. 206 to lower end of State property at Bevans—April 17; May 4.  
Lubbers Run—Hopatcong—April 17; May 2, 8.  
Musconetcong River—See closures Hunterdon County.  
Papakating Creek—100 ft. above Frankford Plains Bridge to 100 ft. below Lewisburg Creamery Bridge—April 27; May 10, 17.  
Papakating Creek, W. Br.—100 ft. above upper Woodburn Pond Bridge to Papakating Creek—April 27; May 10, 17.  
Paulinskill River—Lime Crest Bridge, Lafayette Twp. to Warren County Line—April 21, 28; May 5, 12, 19, 26.  
Pequest River—Springdale Rt. 206 to Warren County Line—April 17, 24; May 1, 8, 15, 22.  
Saw Mill Lake—High Point Park—April 21, 28; May 5, 12, 19, 26.  
Seneca Lake—Sparta Township—April 27; May 8, 17.  
Sparta Glen Brook—Glen Road to Sparta—Franklin Road—April 27; May 2.  
Swartswood Lake—Swartswood Lake—April 27; May 11.  
Wallkill River—W. Mt. Road to Rt. 23, Hamburg, Sussex County—April 17, 24; May 1, 8, 15, 22.  
Wayayanda Lake—Highland Lakes—April 25; May 11.

### **Union County**

- Rahway River—Union County—April 21, 28; May 5, 12, 19, 26.

### **Warren County**

- Beaver Brook—Lake Justit Road to Pequest River—April 27; May 11, 16.  
Blair Creek—Blair Falls to and including Blair Lake—April 21; May 11, 19, 26.  
Dunnfield Creek—entire length—April 19; May 3, 17.  
Jacksonburg Brook—Mingle Bridge to Paulinskill River—April 19, 27; May 12, 26.  
Mt. Lake—Buttville—April 18, 25; May 2, 9, 16.  
Musconetcong River—See closures Hunterdon County.  
Paulinskill River—Stillwater to Delaware River—April 21, 28; May 5, 12, 19, 26.  
Pequest River—Sussex-Warren County Line to Delaware River—April 17, 24; May 1, 8, 15, 22.  
Pohatcong Creek—Rt. 69 to Delaware River—April 18, 25; May 2, 9, 16, 23.  
Silver Lake—Hope—April 17, 24; May 1, 8, 15.  
Van Campens Brook—Sussex County Line to Delaware River—April 19; May 3, 17.

2. There will be no minimum size on trout.

3. Creel limit, 6 trout per day, whether taken in fly-fishing or other waters, except as noted on the Musconetcong no-kill stretch. Possession limit is one day's catch.

## **. . . Fishing Regulations**

4. Landlocked salmon if caught may be retained during the open season for trout prescribed herein.

5. Round Valley Reservoir shall be closed to all fishing.

### **Fly-Fishing Waters**

From and after 5:00 a.m. on Monday, May 1, 1967, to and including November 30, the following stretches are open to fly-fishing only, and closed to all fishing on the days listed for stocking during May:

1. Big Flat Brook, Sussex County—from the concrete bridge on Route 206 downstream to the end of the Roy Tract, a distance of approximately four miles, except that portion known as the Blewett Tract regulated below.

2. South Branch of the Raritan River, Hunterdon County—the stretch of water known as the "Ken Lockwood Gorge," a distance of approximately two and one half miles.

From January 1, 1967, to midnight, March 5, 1967, and from 8:00 a.m. on April 8, 1967, to midnight, February 29, 1968, the following stretch is open to fly-fishing only, and closed to all fishing on the days listed for stocking during April and May:

1. Big Flat Brook, Sussex County—that portion known as the Blewett Tract, clearly defined by marker signs.

2. Paulinskill River, Sussex County—from the dam at Paulinskill Lake downstream for a distance of approximately one mile to the marker sign erected by the Division.

3. Musconetcong River, Morris and Warren Counties—the stretch starting at the bridge on Schooley's Mountain Road, extending downstream approximately one mile to the entrance of the river into the Johnson property, Route 24. This stretch is designated as a no-kill area and all trout caught must be returned to the water unharmed.

The following regulations shall apply to the above designated fly-fishing waters:

1. Whenever fly-fishing only is permitted, daily starting time shall be 5:00 a.m. and closing time shall be 9:00 p.m.

2. Not more than 6 trout may be killed daily. Trout in excess of this number may be caught provided such trout are immediately returned to the water unharmed, except that the Musconetcong fly-fishing stretch is designated a no-kill area and all trout caught in this stretch must be returned to the water unharmed.

3. No bait or lures of any kind may be used except artificial flies which are expressly limited to dry flies, wet flies, bucktails, nymphs, and streamers. Expressly prohibited are metal, plastic or wooden lures, plugs, spinners, and flies with spinners attached, or any multiple-hooked device. In the Musconetcong no-kill area, only barbless hooks may be used.

4. Also expressly prohibited are spinning reels or any type of angling whereby the fly is cast directly from the reel.

5. No person may have in possession while engaged in angling on the waters designated as fly waters, any natural bait, live or preserved, in that period of time during which fly-fishing only is in effect.

### **Baitfish**

It is prohibited to net, trap, or attempt to net or trap any type or species of minnow or baitfish from March 5 to June 10 from that section of any water that is stocked with trout, except that landlocked alewives may be taken in fresh water by special permit issued by the Division at its discretion. From and after June 10, any type or species of minnow may be taken provided that they be limited to 35 per day per person; and any seine so used shall not be greater than 10 feet in length and 4 feet in depth; and any minnow trap so used shall not be larger than 24 inches in length, nor have a funnel mouth greater than two inches in diameter.

### **Snagging Prohibited**

The foul hooking of largemouth bass, smallmouth bass, pickerel, northern pike, or trout shall be prohibited in open waters. Any of the aforementioned fish so hooked must be immediately returned to the water. This shall not apply to fish so taken through the ice during the ice fishing season. (See separate regulations for Greenwood Lake, and for the Delaware River between New Jersey and Pennsylvania.)

### **Warm Water Fish**

1. During 1967, there shall be no closed season in open (unfrozen) waters on pike-perch (walleyed pike), pickerel (Eastern or chain, sometimes called pike), smallmouth (black) bass, largemouth (Oswego) bass, and northern pike. (See separate regulations for Greenwood Lake and for Delaware River between New Jersey and Pennsylvania, and see ice fishing regulations.)

2. Except on brook, brown, and rainbow trout, closed seasons are hereby eliminated in open (unfrozen) waters on all fresh water fish, and also on striped bass in fresh water.

3. The size limits on rock bass, calico bass, crappie, and pickerel are hereby eliminated in all waters except in Lake Hopatcong where there shall be a minimum size of 15 inches for eastern or chain pickerel. (See separate regulations for Greenwood Lake.)

4. The provision that a person may not take or have in possession more than 25 in the aggregate of fish commonly classed as fresh water game and food fish is hereby abolished. (See code for bag limits on individual species.)

5. The minimum length of largemouth (Oswego) bass and smallmouth (black) bass in all waters shall be 9 inches. Daily bag and possession limit for largemouth (Oswego) bass and smallmouth (black) bass shall be not more than 5 in the aggregate. (See separate regulations for Greenwood Lake, and the Delaware River between New Jersey and Pennsylvania.)

6. The minimum length on northern pike shall be 24 inches and the daily bag and possession limit shall be 10.

7. Fishing for all species of fresh water fish is permitted 24 hours daily except on those days that certain trout streams are closed for stocking during April and May, and except in the Musconetcong no-kill fly-fishing stretch and other fly-fishing waters, when fishing is restricted from 5:00 a.m. to 9:00 p.m. daily.

8. In the Musconetcong no-kill area, only barbless hooks may be used.

### **Ice Fishing**

1. The ice fishing season for all species will be from January 1, 1967, to February 19, 1967, inclusive. (See separate regulations for Greenwood Lake, and for the Delaware River between New Jersey and Pennsylvania.)

2. Not more than 5 tip-ups or lines may be used by each fisherman and all such devices must be clearly marked with the name and address of the user.

3. A three-jig, not larger than ½ inch from point to point, may be used during the regular ice fishing season. When ice is present after February 19, all species may be taken with a three-hook jig as specified. No fishing of any kind through the ice shall be permitted during the month of December, 1967, except for carp and suckers as provided by statute. (See separate regulations for Greenwood Lake, and for the Delaware River between New Jersey and Pennsylvania.)

4. There shall be no bag limit on white perch or yellow perch taken through the ice.

### **Angling in Trout Stocked Waters**

Between March 5 and 8:00 a.m. EST on April 8, 1967, it shall be unlawful to angle with fly, bait, or lure, hook and line, or with bow and arrow, in ponds, lakes, or those portions of streams that were stocked with trout for the 1966 season. This restriction shall also apply to all waters on which closed intervals are prescribed in this Code from April 17 through May 26, 1967, on the respective closed days as listed. Angling, however, is permitted through March 26, 1967, in Lake Hopatcong, Big Swartswood, Farrington, Wawayanda,

## . . . Fishing Regulations

Cranberry, Musconetcong, Pompton, and Budd Lakes and the Delaware-Raritan Canal Feeder, except that trout cannot be taken.

Angling is also permitted through April 2, 1967, in the sections of streams listed below, provided trout are not taken:

1. South Branch, Raritan River. Entire river downstream from Bridge at Dart's Mills on Route 523.
2. North Branch, Raritan River. Entire river downstream from U. S. Route. 22 Bridge.
3. Ramapo River. Entire River downstream from W. Oakland Dam to Doty Road Bridge, Oakland.

### **Bow and Arrow Fishing**

It shall be legal to take any species of fish except brook, brown or rainbow trout, landlocked salmon, largemouth bass, or smallmouth bass, pickerel, northern pike, or walleyed pike at any time by use of a longbow and arrow with line attached, provided a person has a proper fishing license. (See separate regulations for Greenwood Lake, and for the Delaware River between New Jersey and Pennsylvania, and for streams stocked with trout for the 1966 season.)

### **Greenwood Lake**

In cooperation with the New York State Conservation Department, the New Jersey Division of Fish and Game announces the following regulations for Greenwood Lake, which lies partly in Passaic County, New Jersey, and partly in Orange County, New York. These regulations are made a part of the New Jersey State Fish and Game Code and will be enforced on the whole lake by the conservation authorities of both states.

|                                | <i>Season</i>    | <i>Size</i> | <i>Bag Limit</i>            |
|--------------------------------|------------------|-------------|-----------------------------|
| Trout                          | No closed season | None        | 3                           |
| Largemouth and smallmouth bass | No closed season | 9 inches    | 5 singly or<br>in aggregate |
| Eastern chain pickerel         | No closed season | None        | 10                          |
| All other species              | No closed season | None        | None                        |

On Greenwood Lake, it shall be illegal for any ice fisherman to use at any time more than five tip-ups or lines per angler, and such tip-ups or lines must be plainly marked with the name and address of the angler.

On Greenwood Lake, fishing will be permitted 24 hours a day.

Either New York or New Jersey fishing licenses will be honored on all of Greenwood Lake.

Bow and arrow fishing for carp, suckers, herring, catfish, and eels will be permitted in Greenwood Lake by properly licensed fishermen.

### **Delaware River Between New Jersey and Pennsylvania**

In cooperation with the Pennsylvania Fish Commission, the New Jersey Division of Fish and Game announces the following regulations for the Delaware River between New Jersey and Pennsylvania. These regulations are made a part of the New Jersey State Fish and Game Code and will be enforced by the conservation authorities of each state.

|  | <i>Season</i>     | <i>Size</i> | <i>Bag Limit</i> |
|--|-------------------|-------------|------------------|
| Trout                                      | April 15-Sept. 30 | 10 inches   | 5                |
| Largemouth and smallmouth bass             | No closed season  | 9 inches    | 6 in all         |
| Walleyed pike (pike-perch)<br>and pickerel | No closed season  | None        | 6 of each        |
| Striped bass                               | March 1 - Dec 31  | 12 inches   | None             |
| Baitfish; fish Bait                        | No closed season  | None        | 35               |
| All other fresh water species              | No closed season  | None        | None             |

Fishing licenses of either state will be recognized in the Delaware River from water's edge to water's edge and fishermen will be permitted to take off in a boat from either shore and on returning, to have in possession any fish which may be legally taken; however, any person fishing from the shore must obtain a license in that state on whose shore fishing is done. Residents of Pennsylvania must possess a New Jersey Non-resident license if they fish from the New Jersey bank, and residents of New Jersey must have a Pennsylvania license if they fish from the Pennsylvania bank.

Angling may be done with two rods and two lines or two hand lines or one of each. Not more than three single hooks or three burrs of three hooks each may be used per line.

While fishing through holes in the ice for fish not protected by closed season, five tip-ups or any combination of five devices that will include tip-ups and not more than two rods and lines or two hand lines or one of each may be used.

Spears (not mechanically propelled) and longbows may be used to take shad, eels, carp, suckers, herring, and bullheads by properly licensed fishermen, except within 50 rods (825 feet) of an eel weir.

Baitfish may be taken and possessed for personal use only, but not to exceed 35 per day.

Eel weirs for the catching of carp, catfish, eels, and suckers only, may be operated under permit from the Division of Fish and Game at any time of the year and at any time of the day.

#### **Tributaries of the Delaware River Between Trenton Falls and Birch Creek Where Tide Ebbs and Flows**

The seasons, sizes, and bag limits established for the taking of fresh water game fish in the tributaries of the Delaware River between Trenton Falls and Birch Creek shall be the same as those previously outlined for all waters of the state, other than the Delaware River between New Jersey and Pennsylvania, and Greenwood Lake, where special regulations apply. (Note: Birch Creek is located in Gloucester County approximately one mile north of the Salem County line.)

#### **Regulations Pertaining to Exotics**

No person shall liberate any crocodile, alligator, or other reptile not native to this State.

---

These 1967 Fishing Regulations are presented merely  
for your convenience in planning vacations and fishing trips  
**Consult Compendium and Fish Laws for details and laws in full.**

---

20th Annual

## ***Middlesex County Junior Sportsmen's Show***

**Rutgers Field House, New Brunswick**

**April 11 - April 15, Inclusive**

Daily—9:30 a.m.—10:00 p.m.

Saturday, April 15—9:30 a.m.—5:00 p.m.

**Many exhibits—rod and gun, archery, skin diving, movies,  
special events, conservation, fish and game, and nature**

Since this is the twentieth anniversary of the Show, outstanding displays  
in celebration of the event are expected.

**No Charge for Admission**

**Irving Sosin, Chairman**

March, 1967

31

# 1967 Conservation Stamps

Millions of Americans now have their annual chance to be eye-witnesses to the beauty of nature. Distribution by the National Wildlife Federation of the 1967 edition of its conservation stamps is in progress. The new sheet of 36 portraits of native birds, animals, butterflies, wild flowers, and fish carries on a tradition started 28 years ago by the late J. N. "Ding" Darling who designed the first set of stamps and served as the first president of the citizen's conservation organization.

This year's edition of wildlife conservation stamps features portraits of seven animals (Beluga whale, Kodiak bear, ringtail cat, bobcat, eastern cottontail, white footed mouse, and peccary), 12 birds (scarlet ibis, swallow-tailed kite, mountain chickadee, brown creeper, pine siskin, orchard oriole, blue-gray gnatcatcher, boat-tailed grackle, pied-billed grebe, pintail, bar-tailed godwit, and great jacamar), five wildflowers (eastern troutlily, sego lily, buets, rough-fruited cinquefoil, and spreading dogbane). The colorful stamps also contain portraits of four butterflies (Monarch, common sulphur, Milbert's tortoise shell, and checkered skipper), four fish (creek chub, rosefin shiner, redline darter, and swordfish) plus a shrub (staghorn sumac), tree (red mangrove), reptile (collared lizard), and a hydrozoa (Portuguese Man-O-War). The stamps are lithographed in full-color from original paintings by some of America's most outstanding wildlife artists, working under the supervision of Federation Art Director Roger Tory Peterson. The art team for the 1967 conservation stamp included, in addition to Peterson, Maynard Reece, Don Eckelberry, Guy Coheleach, Louis Darling, Don Malick, Jean Zalinger, Edna Rae Madsen, Charles Ripper, and Robert Kusserow.

The Federation's Wildlife Conservation Stamps are suitable for any decorative or educational use. Many school children and teachers use them in nature study and save them in special stamp albums produced for that purpose by the Federation. The albums contain complete descriptions and life histories of the species depicted on the stamps plus other educational articles about American wildlife.

If you have not received your 1967 stamps, you should write to the National Wildlife Federation, 1412 Sixteenth Street, N.W., Washington, D. C. 20036 and request a set. #

---

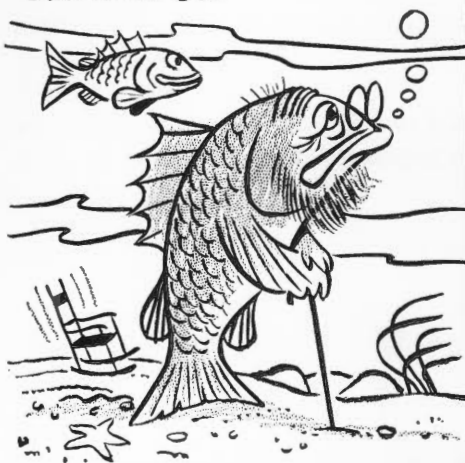
Fox hunting season is open throughout the state during the month of March. Since many fox hunters with hounds welcome an additional gun in their parties to help head off the fox, hunters without dogs should let fox hunters know that they are interested in a fox hunt.

# Fur, Fin <sup>and</sup> Campfire

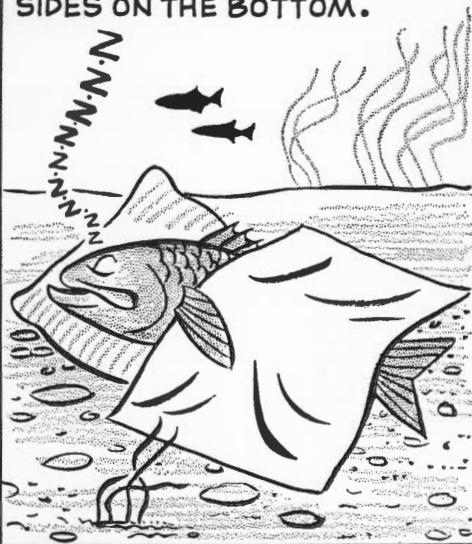
By BILL BERO

## THE EXPERTS TELL US THAT...

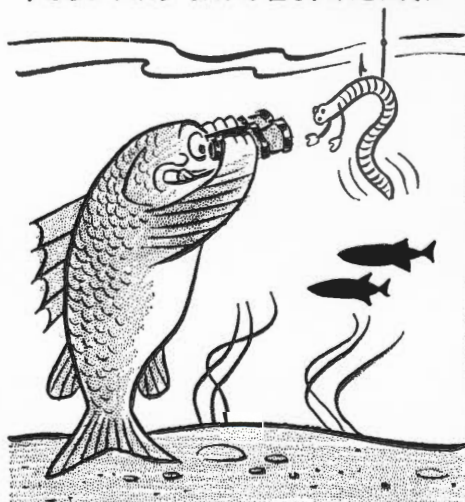
FISH DON'T LIVE TOO LONG, ONE LIVING 10-15 YRS WOULD BE COMPARABLE TO A HUMAN BEING OF 80.



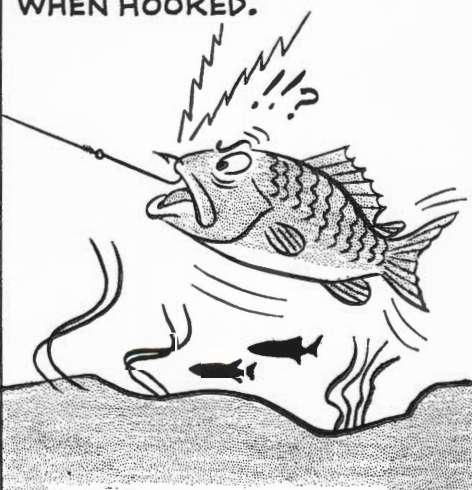
FISH DO SLEEP, SOME ON THEIR SIDES ON THE BOTTOM.



CAN FISH SEE? YES, THEY FIND FOOD AND EVADE DANGER.



A FISH DOESN'T REALLY FEEL PAIN--JUST DISCOMFORT--WHEN HOOKED.



**Striped bass season opens on March 1**

# Scarlet Oak

(*Quercus coccinea*)

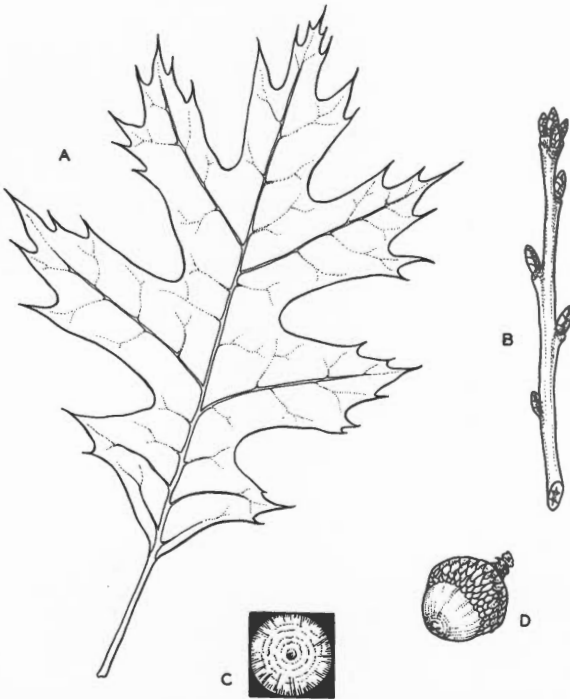
Scarlet oak is generally found growing on dry, sandy soils in a mixture with other oaks. It is a medium-sized tree, and one common characteristic of its form is drooping and dead lateral branches.

## Range:

Throughout the eastern United States but west of the Southern Atlantic and Gulf Coastal Plains.

## Leaves:

Alternate, 3 to 7 inches long and 3 to 5 inches wide. The leaves are 5- to 9 lobed. The lobes are bristle-pointed and separated by deep



## Scarlet Oak

A. Leaf

B. Twig, with buds

C. Acorn, tip view

D. Acorn, in cup

sinuses often extending  $\frac{2}{3}$  of the distance to the midrib. Leaves are bright green above and paler beneath. Tufts of hairs grow in the axils of the veins. (See figure A.)

## Twigs:

Slender and reddish brown, covered with many small, pale lenticels. The twig has a star-shaped pith. (See figure B.) The terminal buds are  $\frac{1}{8}$  to  $\frac{1}{4}$  inch long and covered with reddish brown, wooly

scales. This wool extends from the mid point to the bud to the tip. In comparison, the black oak bud is wooly all over, and the red is free of wool.

### Flowers:

Male and female flowers are borne separately on the same tree. Flowering takes place in the spring when the leaves are about  $\frac{1}{3}$  of their normal size. The reddish female flowers are borne on short stalks.

### Fruit:

A reddish brown acorn  $\frac{1}{2}$  to 1 inch long. It often has concentric circles near the tip. (See figures D and C.) The cup covers  $\frac{1}{3}$  to  $\frac{1}{2}$  of the acorn. The acorns, growing singly or in pairs, are attached to the stem either directly or by a short stalk. They mature at the end of the second season.

### Uses:

Scarlet oak reaches a height of 60 to 80 feet and a diameter of 2 to 3 feet. Inferior in quality to red oak, it is sometimes substituted for it. Knots in scarlet oak limit its use for finishing purposes, but it is an excellent source of rough lumber.

Scarlet oak obtained its name from its scarlet colored leaves in autumn. Because of this characteristic, it is often used for street and ornamental plantings. #

—Austin N. Lentz, *Extension Specialist in Farm Forestry*  
Ruigers—The State University  
Drawings by Aline Hansens

---

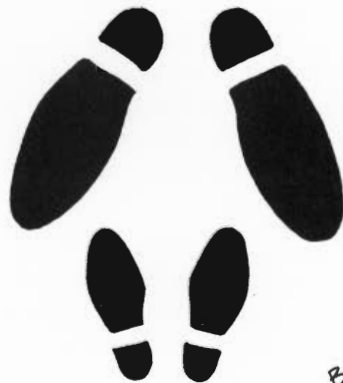
Scarlet oak twigs, buds, and leaves are browsed by deer to some extent. Beaver seem to like the inner bark quite well. And, squirrels apparently relish the immature acorns to a marked degree.

---

## Outdoor

### Cracks and Tracks

*“Hawkins, have you ever thought of going into the New Jersey Forest Fire Service?”*



BILL SHECCY

# Council Highlights

## December Meeting

The open session of the regular monthly meeting of the Fish and Game Council was held in Trenton on December 13. In addition to the Council members and the Division personnel present, the following persons attended: Mr. and Mrs. Al Toth and Bill Backus.

## Fisheries Management

Robert Hayford, Chief of the Bureau of Fisheries Management, called attention to a list of warm water fish stocked since August, contained in his written report. Trout measurements have been made in conjunction with winter setups. The overall picture is good, with two-year olds ahead of last year and yearlings about the same.

Mr. Hayford reported on the status of the Bureau's ten-year projection of needs. The Marine Fisheries Section has completed its projection, and the Hatchery and the Freshwater Research programs were being compiled. They will be put together with appropriate comments by the Chief. Councilman Marron urged him to expedite the report to facilitate the Finance Committee's consideration of capital needs.

Mr. Allocca inquired of Mr. Hayford as to why Deal Lake, which is not open to the general public for fishing but only to the residents of the area, was stocked with 3,000 bass. Mr. Alampi recommended that the municipality be contacted and notified that this stocking was in error and that we will not stock the lake in the future unless it is opened for fishing to the general public. Mr. Hayford said he would have his men check into this matter.

## Coastal Patrol

Captain Newman T. Mathis, Chief of the Coastal Patrol, reported that during November there was a good population of striped bass along the coast and in Delaware Bay and that there were no major problems with illegal netting. There was a good population of striped bass off Avalon, and good catches of striped bass were being made by trawlers out of Atlantic City, operating beyond the three-mile limit. There were heavy concentrations of small menhaden at Ocean City, and five-inch bunkers were found all along the coast. A large fleet of clam boats had been operating close to the beach along the coast.

## Wildlife Management

George Alpaugh, Chief of the Bureau of Wildlife Management, reported that the figures on the firearm deer kill were still coming in and therefore he did not have the final total at the time. However, he gave the total so far as 5,075 deer, 134 over last year's total at the time.

Mr. Allocca inquired as to the state's stocking of rabbits and Mr. Alpaugh again recommended that it was inadvisable to do so inasmuch as it has been evaluated that the creation of good food and cover areas is the only feasible way to attain and hold a rabbit population, and the method of stocking rabbits has been found to be unsuccessful.

Councilman Alampi complained about the controlled burning program of the Bureau of Forestry Management. He predicted there will be a rash of complaints as a result of this program and suggested that the Council investigate the matter. Mr. Marron requested that Mr. Alpaugh gather the pros and cons of the controlled burning question and present his report to the Council.

### **Pheasant Stocking**

Mr. Alpaugh reported that, in addition to the usual pheasant liberations on open lands and Public Shooting Grounds throughout the state this fall from both pheasant farms, the Forked River Farm had an excess of 500 birds for a supplemental liberation. Chief Alpaugh explained the method of choosing areas for the stocking of pheasants on open lands. Land Evaluation books are kept both in the Trenton office and by the conservation officers in which are listed by county and township the known lands open to hunting, this information having been secured in cooperation with conservation officers and the wildlife managers. It is determined from this source the number of birds recommended and the total number of birds per county to be liberated. In regard to the reaction from the public as to hen pheasants being released this year, it was stated that no complaints have been heard in this regard.

### **Law Enforcement**

William Coffin, Chief Conservation Officer, reported a good deer season. Only three serious accidents were listed, two deer hunters and one duck hunter. In regard to increasing the quota of new deputies where required, it was suggested that all conservation officers be notified of this.

### **Public Relations**

William Peterman, Supervisor of Public Relations, reported that much overtime and vacation were taken off by his staff during November inasmuch as it was a slow month.

### **New Licenses**

Director MacNamara reported that the new hunting and fishing licenses were received and distributed.

### **Fisheries Committee**

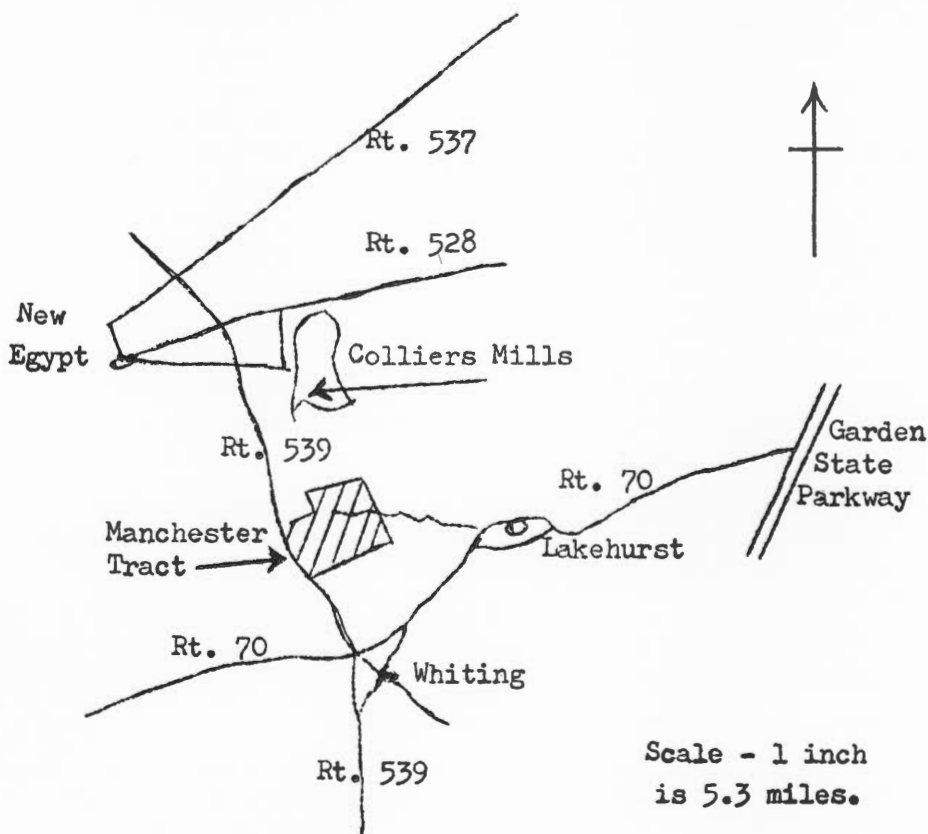
Councilman McCloskey stated that there was to be a fresh water fisheries committee meeting on the third Saturday in January, 1967, at 10:30 a.m. to review the entire stocking program for the spring. #

# Manchester Tract

The Manchester Public Shooting and Fishing Grounds is located in Ocean County and comprises about 2,300 acres of woodlands. This tract is bounded on the west by Route 539, on the south by Union Branch, on the east by the Whiting-Beckerville Road, and on the north by the Lakehurst Naval Air Station line.

This tract is managed primarily for upland hunting. Quail gunning and deer hunting are very good on this area. Some good grouse shooting is to be had along the edge of the swamps.

To reach the Manchester Tract from the town of Lakehurst, take Route 70 west out of Lakehurst about 5 miles to the junction of Route 539. Turn north, or right, on Route 539 and proceed about 3.5 miles to the first black-top road on the right. Turn right on this road and the tract is located on both sides of the road. #



# Violators Roundup

| <i>Defendant</i>   | <i>Offense</i>                | <i>Penalty</i> |
|--|-------------------------------|----------------|
| Ralph Vanorkel, 576 21st Ave., Paterson                      | Fish no license               | 20             |
| John F. Godown, 29 Wells Avenue, Hampton                     | Hunt no license               | 20             |
| Fred W. Haeger, 732 N. Fork Landing Rd., Maple Shade         | Angle closed waters           | 20             |
| Stephen Y. West, 6 Orchard Road, Florham Park                | Poss. (1) trout closed water  | 20             |
| Stephen Y. West, 6 Orchard Road, Florham Park                | Fish no license               | 20             |
| Alfred Granata, 4169 White Plains Rd., Bronx, N. Y.          | Fish no license               | 20             |
| Joseph Frascione, 127 Cheerfield, Yonkers, N. Y.             | Fish no license               | 20             |
| Herbert Winston, 930 Godfrey Ave., Philadelphia, Pa.         | Fish no license               | 20             |
| John Deehert, Jr., 29 South Bay, Highlands                   | Fish drifting gill net        | 50             |
| John Deehert, Jr., 29 South Bay, Highlands                   | Illegally cut & take net      | 50             |
| Ismanuel Ortiz, 111 Egg Harbor Rd., Hammonton                | Fish no license               | 20             |
| Anthony T. Garbarino, 246 S. 20th St., Camden                | Fish no license               | 20             |
| Thomas E. Blair, 61 Railroad Ave., Newton                    | Fish no license               | 20             |
| Thomas E. Blair, 61 Railroad Ave., Newton                    | Fish no license               | Jail 4 Days    |
| George Harvey, Mt. View St., Newton                          | Fish no license               | 20             |
| Robert A. Harvey, Mt. View St., Newton                       | Fish no license               | 20             |
| Leslie Snook, Jr., Box 1, R.D. No. 4, Newton                 | Fish no license               | 20             |
| Thomas Motley, 423 S. 10th St., Newark                       | Take trout w/o trout stamp    | 20             |
| John Refolo, 114 Webster Ave., Jersey City                   | Poss. (1) pickerel under size | 20             |
| Roland M. Scheller, 20 Sutton Pl., Cranford                  | Fish no license               | 20             |
| Jose A. Colon Reyers, Waterford                              | Fish no license               | 20             |
| Justino Vazquez-Feliciano, Waterford                         | Fish no license               | 20             |
| Fiedel Perez, Waterford                                      | Fish no license               | 20             |
| Stanley L. Cohen, 5011 River Rd., Pennsauken                 | Fish no license               | 20             |
| Salvatore F. Onorato, 52 Church St., Ramsey                  | Fish no license               | 20             |
| Vincent Demarco, 52 Spring St., Lodi                         | Fish no license               | 20             |
| Joseph Loungo, Mt. Carmel Rehabilitation Center, Paterson    | Fish no license               | 20             |
| Johna Walters, Box 238, Oxford                               | Fish closed waters            | 20             |
| Kenneth Mesbach, Box 281, Oxford                             | Fish closed waters            | 20             |
| John R. Pavese, 771 Rivervale Rd., Rivervale                 | Fish no license               | 20             |
| Dave T. Volino, 41 Christina Pl., Paterson                   | Fish no license               | 20             |
| Michael Putelo, 1 Stuyvesant Oval, New York City, N. Y.      | Fish no license               | 20             |
| Steven Bugel, 343 E. 10th St., New York City, N. Y.          | Fish no license               | 20             |
| Salvatore Conzoneri, 31-31 79th St., Jackson Heights, N. Y.  | Fish no license               | 20             |
| Frederick C. Monohan, Beckerville Rd., R.D. No. 1, Lakehurst | Poss. parts unmarked deer     | 100            |
| John Clair, 508 Middlesex St., Gloucester City               | Fish no license               | 20             |
| Evert Hummer, 23 Sunset Dr., Hampton                         | Poss. (1) wild duck           | 20             |
| Kenneth Ansback, Maples Apt., Glen Gardner                   | Poss. (1) wild duck           | 20             |
| George Rhodes, 5275 Burton St., Philadelphia, Pa.            | Fish tidal waters w/o license | 20             |
| Jonathan F. Wiegand, 643 W. 148th St., Holland, Mich.        | Fish no license               | 20             |
| Clarence K. LaBarre, Knowlton Rd., R.D., Blirstown           | Hunt no license               | 20             |
| George A. James, Knowlton Rd. R.D., Blirstown                | Hunt no license               | 20             |
| Thomas A. Foard, 413 Runyon Ave., Middlesex                  | Fish no license               | 20             |
| Ronald Kiene, 45 Norman Rd., Newark                          | Fish closed waters            | 20             |
| Wilbon McJohnson, 801 Bergen St., Newark                     | Hunt no license               | 20             |
| Leonard Artigliere, 100 Central Ave., Madison                | Fish no license               | 20             |
| Leslie Huber, 95 Brookdale Ave., Newark                      | Fish no license               | 20             |

## . . . Violators Roundup

| <i>Defendant</i>  | <i>Offense</i>                           | <i>Penalty</i> |
|---|--|----------------|
| William Downes, 36 Maplewood Ave., Colonia                                | Fish no license                          | 20             |
| Robert B. Rush, 384 Littleton Ave., Newark                                | Fish no license                          | 20             |
| Charles H. Massa, 239 Grand St., Paterson                                 | Fish no license                          | 20             |
| John Folsom, 43 Oak St., Jersey City                                      | Hunt w/rifle on public shooting grounds  | 20             |
| Robert Clinkscoles, 12 Manning Ave., Jersey City                          | Hunt w/rifle on public shooting grounds  | 20             |
| Ronald R. Dalpe, Second St., Glen Gardner                                 | Carry gun on Sunday                      | 20             |
| Albert M. Windish, 264 Willow Dr., Cinnaminson                            | Fail to exhibit license                  | 20             |
| Percy E. Chase, 712 S. Main St., Glassboro                                | Fish no license                          | 20             |
| Robert J. Hugenschmidt, 202 Palm Dr., Harbor Bluffs, Largo-Pinellas, Fla. | Fish no license                          | 25             |
|   |  | Bail Forfeit   |
| Charles F. Kowchak, 1320 Parker St., Chester, Pa.                         | Fish no license                          | 20             |
| Benjamin Karwacki, 211 Main St., Delran                                   | Hunt no license                          | 20             |
| Adam Gonteski, 118 Polk St., Riverside                                    | Hunt no license                          | 20             |
| Adam Gonteski, 118 Polk St., Riverside                                    | Negligent use of gun-injury              | 50             |
| Joseph M. Spinelli, 6923 Radbourne Rd., Upper Darby, Pa.                  | Fish no license                          | 25             |
|   |  | Bail Forfeit   |
| Larry L. Wilburn, 197 Grand Ave., Trenton                                 | Hunt no license                          | 20             |
| Pat Montagna, 127 Bala Dr., Somers Point                                  | Poss. undersize lobster                  | 20             |
| Robert W. Knauff, 211 W. Kirclin Ave., Linwood                            | Hunt no license                          | 20             |
| Robert W. Knauff, 211 W. Kirclin Ave., Linwood                            | Attempt to kill protected bird           | 20             |
| Robert W. Knauff, 211 W. Kirclin Ave., Linwood                            | Hunt w/rifle                             | 20             |
| Francis H. Mancuso, Jr., 228 St. James Pl., Northfield                    | Hunt no license                          | 20             |
| Francis H. Mancuso, Jr., 228 St. James Pl., Northfield                    | Attempt to kill protected bird           | 20             |
| Francis H. Mancuso, Jr., 228 St. James Pl., Northfield                    | Loaded gun in auto                       | 20             |
| Herbert Savage, 621 Centrale Ave., Union Beach                            | Use bait in fly stretch waters           | 20             |
| Sandalio DeLeon, 703 S. Third St., Vineland                               | Poss. wild buck deer fawn                | 100            |
| Erwin Kosempel, 4211 Marple St., Philadelphia, Pa.                        | Fish no license                          | 20             |
| Robert Harley, 309 W. 127 St., New York, N. Y.                            | Fish no license tidal waters             | 20             |
| Ralph H. Gilbert, Jr., 1130 Sycamore St., Camden                          | Fish no license                          | 20             |
| Philip M. Saczynski, 1137 Sycamore St., Camden                            | Fish no license                          | 20             |
| William E. Barr, Box 272 D. Cooper, Tomlinson Rd., Medford                | Game animals in captivity - no license - | 50             |
| Edward P. Donnelly, 3 Hunt Rd., Bordentown                                | Fish no license                          | 20             |
| Ronald S. Jolley, 9 E. Main St., Moorestown                               | Fish no license                          | 20             |
| Joenathan Barnes, Sr., 1143 Magnolia Ave., Camden                         | Fail to exhibit license                  | 20             |
| Paul Fass, 129 Redwood Ave., Paterson                                     | Fish no license                          | 20             |
| Patrick H. Tracy, 74 Manito Ave., Oakland                                 | Fish no license                          | 20             |
| Alexander C. Fadil, 458 Paulison Ave., Passaic                            | Fail to exhibit license                  | 20             |
| Andrew Glen Bove, Long Pond Rd., W. Milford                               | Hunt no license                          | 20             |
| Andrew Glen Bove, Long Pond Rd., W. Milford                               | Dis. firearm w/in 300 ft. of dwelling    | 20             |
| Vincent T. Palozzlo, 1184-43rd St., Brooklyn, N. Y.                       | Fish no license                          | 20             |
| Samuel J. Carothers, 908 Hazelwood Ave., Rahway                           | Hunt no tag                              | 5              |
| James Derby, So. Main Rd., Vineland                                       | Uncased weapon                           | Sus. Sentence  |
| James Derby, So. Main Rd., Vineland                                       | Illegal missile                          | Sus. Sentence  |
| James Derby, So. Main Rd., Vineland                                       | Hunt deer closed season                  | Sus. Sentence  |
| James Derby, So. Main Rd., Vineland                                       | Hunt aid of lights                       | Sus. Sentence  |

During the past year New Jersey conservation officers conducted 59,236 inspections of licenses, creels, bags, and equipment.

**ADD** **Zip**

**to your sport  
as well as your mail**

*Subscribe to*

**New Jersey *Outdoors***

**for better hunting and fishing**

**Use Your Zip Code  
for speedier mail service**

New Jersey Outdoors, P. O. Box 1809, Trenton, N. J. 08625

Please enter my subscription (at \$2.00 per year) for

3 Years For \$5.00

1 year  2 years

new  renewal

To:

Name .....

Street .....

Post Office ..... State ..... Zip Code .....

Please send a gift subscription (at \$2.00 per year) for

3 Years For \$5.00

1 year  2 years

new  renewal

To:

Name .....

Street .....

Post Office ..... State ..... Zip Code .....

From: .....

New Jersey Outdoors

P. O. Box 1809  
Trenton, N. J. 08625

Form 3579 Requested

*Second class postage  
paid at Trenton, N. J.  
and additional office.*



**Only YOU can prevent Forest Fires!**