

### Revenue Passengers

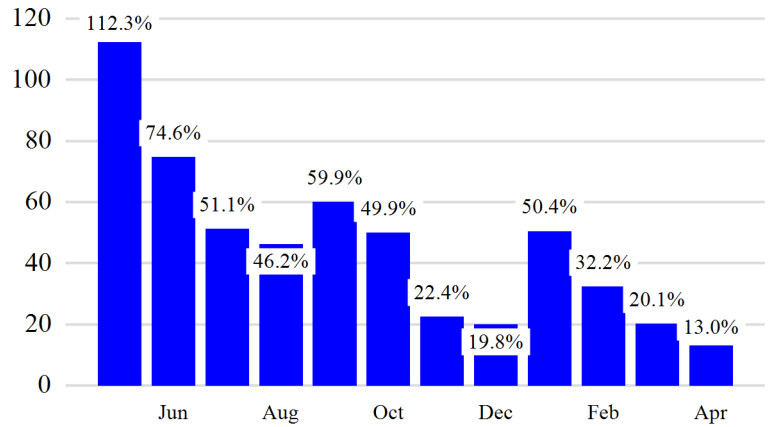
	Curr Month	% Change
	12,181,539	13.0% ▲
Domestic	8,170,901	6.1%
International	4,010,638	30.0%
Non-Revenue	386,647	45.3%

Load Factors	Curr Month
Domestic	82.4%
International	83.2%

82.7% Avg Load Factor

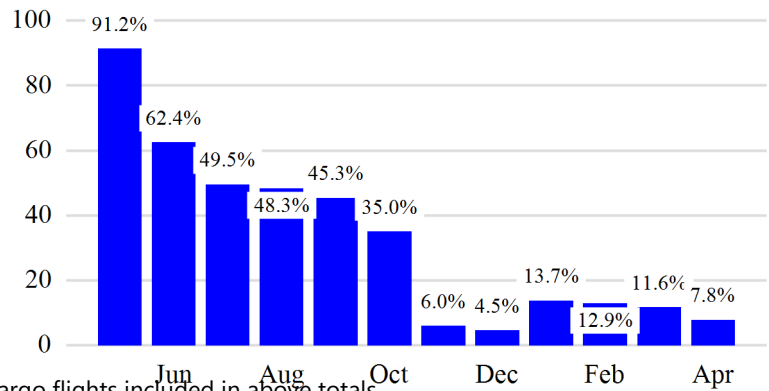
Year over Year % Change in Revenue Passengers - 12 Months



### Total Flights

	Curr Month	% Change
	109,148	7.4% ▲
<b>Excl GA</b>	104,221	7.8% ▲
Domestic	78,837	3.1%
International	25,384	25.9%
Gen Aviation	4,927	-0.1%
Cargo Flights*	3,027	-12.7%

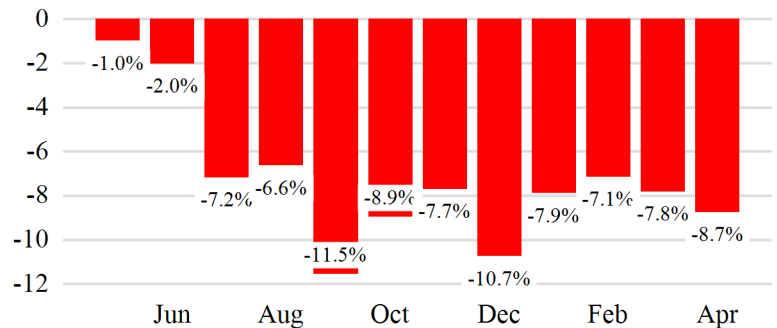
Year over Year % Change in Total Flights (Excl GA) - 12 Months



### Cargo (Short Tons)

	Curr Month	% Change
	179,600	-8.7% ▼
Domestic	74,527	-10.0%
International	105,073	-7.8%
Mail	11,158	-11.4%

Year over Year % Change in Cargo - 12 Months



#### Top 5 Declines in Revenue Passengers by Airline

Airline	Pax Decline	% Decline
AMERICAN	(65,937)	-4.0%
QATAR AIRWAYS	(12,050)	-30.0%
COPA AIRLINES	(6,528)	-20.0%
AIR INDIA	(6,145)	-17.0%
FINNAIR	(6,032)	-30.0%

#### Top 5 Increases in Revenue Passengers by Airline

Airline	Pax Increase	% Increase
UNITED	404,796	15.0%
DELTA	351,587	14.0%
JETBLUE AIRWAYS	141,562	8.0%
Air Canada	75,000	109.0%
SPIRIT AIRLINES	52,634	17.0%

## Airport Summary Statistics

### JFK Summary

	Current Month	YoY %
Total Revenue Pax	5,244,147	16.0
Total Flights Including GA	40,405	12.0
Total Cargo (Short Tons)	122,279	-6.2

### EWR Summary

	Current Month	YoY %
Total Revenue Pax	4,152,863	11.0
Total Flights Including GA	35,940	4.0
Total Cargo (Short Tons)	55,033	-14.0

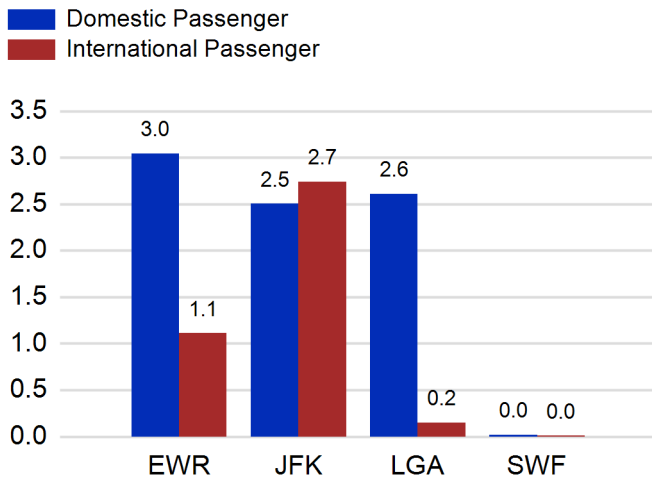
### LGA Summary

	Current Month	YoY %
Total Revenue Pax	2,758,636	8.0
Total Flights Including GA	30,728	5.0
Total Cargo (Short Tons)	524	-14.4

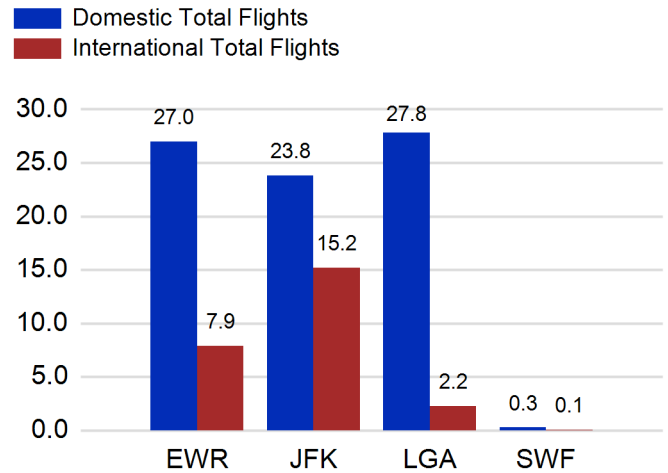
### SWF Summary

	Current Month	YoY %
Total Revenue Pax	25,893	13.0
Total Flights Including GA	2,075	-8.0
Total Cargo (Short Tons)	1,764	-3.4

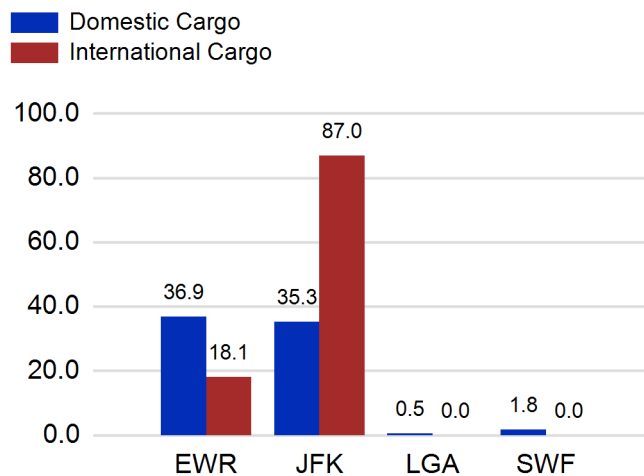
### Total Passengers by Airport (Millions)



### Total Flights by Airport (Thousands)



### Total Cargo by Airport (Thousands of Short Tons)



### 12 Months Ending Passenger & Freight Statistics

#### Top 20 Airlines Ranking by Passengers & Freight: 12 Months Ending Apr 2023

Airline Name	Domestic	International	Total Pax	% of Tot	Airline Name	Short Tons	% of Tot
UNITED	26,162,686	7,567,003	33,729,689	24.56%	FEDERAL EXPRESS	387,280	17.15%
DELTA	25,182,301	5,648,811	30,831,112	22.45%	UNITED PARCEL	199,774	8.85%
JETBLUE AIRWAYS	16,434,539	6,228,541	22,663,080	16.50%	United	185,948	8.24%
AMERICAN	14,474,721	3,590,257	18,064,978	13.15%	DELTA	96,645	4.28%
SPIRIT AIRLINES	4,381,288	0	4,381,288	3.19%	AMERICAN	93,674	4.15%
SOUTHWEST AIRLINES	3,066,701	0	3,066,701	2.23%	KALITTA AIR LLC	81,705	3.62%
ALASKA AIRLINES	2,430,940	0	2,430,940	1.77%	ABX AIR INC	64,453	2.85%
Air Canada	0	1,426,553	1,426,553	1.04%	ATLAS AIR	60,732	2.69%
BRITISH AIRWAYS	0	1,413,340	1,413,340	1.03%	AIR TRANSPORT INT'L.(BAX Inc.)	60,046	2.66%
AIR FRANCE	313	1,188,096	1,188,409	0.87%	KOREAN	52,589	2.33%
EMIRATES AIRLINES	0	1,061,695	1,061,695	0.77%	CARGOLUX AIRLINES	50,530	2.24%
VIRGIN ATLANTIC	0	883,260	883,260	0.64%	BRITISH AIRWAYS	46,578	2.06%
LUFTHANSA CARGO	0	825,110	825,110	0.60%	CHINA AIRLINES (CAL)	44,546	1.97%
TURKISH AIR	0	740,132	740,132	0.54%	CATHAY PACIFIC	40,437	1.79%
AER LINGUS	0	715,332	715,332	0.52%	VIRGIN ATLANTIC	36,706	1.63%
Avianca Cargo	0	690,283	690,283	0.50%	TURKISH AIR	36,215	1.60%
EL AL	0	568,441	568,441	0.41%	LUFTHANSA CARGO	34,032	1.51%
IBERIA	0	505,554	505,554	0.37%	EVA	33,186	1.47%
FRONTIER AIRLINES	482,885	0	482,885	0.35%	AIR FRANCE	31,688	1.40%
SWISS INT'L AIR LINES LTD	0	469,671	469,671	0.34%	ASIANA	28,727	1.27%

#### Passengers & Freight by Market - 12 Months Ending

Market	Passengers	Freight (Short Tons)
TRANSATLANTIC	24,281,297	881,179
CANADA	3,545,883	3,997
CARIBBEAN + BERMUDA	7,964,454	13,238
CENTRAL AND SOUTH AMERICA	4,041,506	60,621
DOMESTIC	90,836,731	949,134
MEXICO	2,415,919	13,890
TRANSPACIFIC	1,875,964	327,462
PUERTO RICO	2,395,704	8,259

### Additional Data

#### Airline Schedules (ADI): Non-Stop Destinations

	Region	Flights (Daily)	Cities
Domestic	Domestic	2571.2	109
	Puerto Rico	35.6	3
	<b>Total</b>	<b>2,606.8</b>	<b>112.00</b>
International	Canada	186.5	8
	Caribbean & Bermuda	161.3	25
	Central & South America	70.3	15
	Mexico	45.1	6
	Trans-Atlantic	333.6	57
	Trans-Pacific	29.7	9
	<b>Total</b>	<b>826.5</b>	<b>120.00</b>
<b>Total</b>	<b>3,433.3</b>	<b>232.00</b>	

#### Airline Schedules (ADI): Carriers & Aircraft Type

	Aircraft Type	Flights (Daily)	Carriers
Domestic	Commuter	982.1	4
	General Aviation	2.0	1
	Narrow Body	1565.2	10
	Wide Body	57.5	4
	<b>Total</b>	<b>2,606.8</b>	<b>19.00</b>
International	Commuter	174.5	5
	Narrow Body	305.6	22
	Wide Body	346.4	56
	<b>Total</b>	<b>826.5</b>	<b>83.00</b>
<b>Total</b>	<b>Total</b>	<b>3,433.3</b>	<b>102.00</b>

This data is continuously validated and should be considered preliminary at this time. Reports may be updated to include minor revisions in the future.

#### Passenger Demographics (ACI ASQ Surveys - 2021)

Connect		Trip Type		Gender	
Local Origin/Destination	78.6%	Business	14.0%	M	49.6%
Connecting	21.4%	Leisure	86.0%	F	50.4%
Transport Mode		Annual Flights		Residency	
Bus/Shuttle	4.7%	1-2	61.5%	United States	81.0%
Other	18.7%	3-5	24.9%	Other	19.0%
Private/Company Car	37.5%	6-10	9.0%		
Rail/Subway	7.3%	11-20	2.8%		
Rental Car	4.6%	21+	1.8%		
Taxi/Limo	27.2%				

#### Ground Transportation

	Curr Month	% Change		Curr Month	% Change
<i>Paid Parked Cars</i>	323,292	-16.2	<i>Total Air Train Passengers</i>	2,461,011	-5.8
<i>GTC Bookings</i>	0		<i>Paid Howard Beach Passengers</i>	167,783	75.3
<i>Airport Coach Passengers</i>	31,196	23.9	<i>Paid Jamaica Passengers</i>	494,937	19.5
<i>Taxis Dispatched</i>	360,030	1.4	<i>Paid EWR Passengers</i>	218,036	29.1
			<i>On-Airport (Unpaid) Passengers</i>	1,580,255	-18.3

#### Airlines for American Carriers (USA)

	Curr Month	% Change
<i>Freight:revenue ton miles (000)</i>	0	

#### Regional Airports: Other

	Curr Month	% Change
<i>TEB flight movements</i>	14,318	-1.0
<i>ISP Total passengers</i>	107,061	-14.7
<i>HPN Total passengers</i>	207,722	57.8