



Community CONNECTION

SPRING 2006

A PUBLICATION OF THE DELAWARE RIVER & BAY AUTHORITY

Airline lands at New Castle Airport

Delta Air Lines has announced that it will operate daily scheduled commercial flights to New Castle Airport (NCA) beginning June 29.

The two, daily non-stop flights between New Castle Airport and Hartsfield-Jackson Atlanta International Airport will bring passenger air travel back to Delaware. Delta's new service between Atlanta and Wilmington will be operated by Delta's regional partner, Atlantic Southeast Airlines, and will use a quiet 40-seat Bombardier CRJ aircraft, shown in the photo

here. In celebrating its newest route, Delta is offering special introductory airfares between June 29 and August 15, 2006.



James T. Johnson, Jr., Executive Director of the DRBA which operates New Castle Air-

port, says that the Authority is pleased to welcome Delta to NCA. "The Authority has always considered New Castle Airport to be ideally positioned as a growth catalyst for the region.

"We believe that Delta's decision to schedule daily flights here illustrates the airport's appeal to the aviation community.

"We look forward to a successful, long-term relationship with Delta and its regional partner," Johnson concluded.

Ground breaking held at South Jersey Tech Park at Rowan

Ground was broken for the first building at the South Jersey Technology Park at Rowan University on April 10 at the site on Route 322 near the junction of Route 55 in Mantua Township, a part of the West Campus of the University.

The \$12 million building, the 45,000-square-foot Innovation Center, will provide space for a mix of Rowan University research laboratories, a technology business incubator and laboratory/office space for private technology-based firms.

Overall, the Technology Park will provide competitively priced, first-class facilities for start up and established companies alike to bring innovative technologies to the marketplace. It is a public/private partnership that has received support from a number of organizations and individuals,



Participants in the ceremony at the South Jersey Technology Park at Rowan University are ready to break ground for the first building. The Tech Center is a public-private partnership.

including the Delaware River and Bay Authority which contributed \$5 million.

The Tech Park will also offer build-to-suit office space for technology firms.

The Tech Park is expected to impact

South Jersey in many ways, attracting a broad range of knowledge-based companies that will create new employment opportunities and help diversify the region's economy.



Community CONNECTION

DELAWARE RIVER
& BAY AUTHORITY

JON S. CORZINE
Governor of New Jersey
RUTH ANN MINNER
Governor of Delaware

COMMISSION MEMBERS

Dr. Warren Wallace, Chair
Michael Parkowski, Vice Chair
Thomas J. Cooper
Edward W. Dorn
Niels S. Favre
Verna W. Hensley
Maureen T. Koebig
Samuel E. Latham
William E. Lowe, III
Gary B. Patterson
Gary F. Simmerman
Ceil Smith

EXECUTIVE DIRECTOR

James T. Johnson, Jr., P.E.

DEPUTY EXECUTIVE DIRECTOR

Donald H. Raineau

EDITOR

James E. Salmon

Community Connection is a publication of the Delaware River and Bay Authority. For further information, please contact the DRBA at PO Box 71, New Castle, DE 19720, or call 302.571.6300, fax 302.571.6367, visit our website at www.drba.net, or email us at contactus@drba.net.

MEET THE DRBA COMMISSIONER

Ceil Smith, a resident of Salem County, New Jersey, was sworn into office as a DRBA Commissioner in June. Her term extends until July 1, 2009.



Smith

A 20-year veteran of South Jersey Newspapers Company, Commissioner Smith was recently named publisher of *Today's Sunbeam*. Active in community and civic organizations, Ms. Smith has been honored for her many contributions.

She received the Calvary Community Development Corporation Service Award in 2005, the Salem Community College Service Award in 2004 and was named Salem County Distinguished Citizen of the Year in 2001.

Ms. Smith is also a member of the Board of Directors of the Memorial Hospital of Salem County since 2002, was President of the United Way Board in 2005, and was the Chairwoman of the Chamber of Commerce Board in 2004.

National organizations recognize DRBA efforts

DRBA Police accredited

The Commission on Accreditation for Law Enforcement Agencies (CALEA) voted unanimously to re-accredit the DRBA's Police Department. Originally accredited in 1996, the DRBA Police Department was re-accredited in 1999 and 2002. All agencies participating in the CALEA process are inspected every three years to ensure continuing compliance.

CALEA conducted a five day on-site assessment of the DRBA Police Department in late 2005 to determine compliance with national operational, administrative, training and personnel management standards.

"The members of the Authority's Police Department worked extremely hard to gain this extraordinary recognition of law enforcement excellence," said James T. Johnson, Jr., Executive Director of the DRBA. "The agency is especially proud that the department earned a second consecutive 100 percent compliance rating, a feat not many departments can claim."

According to the compliance team leader, "The DRBA Police Department is a top flight law enforcement agency that represents the best of CALEA's philosophy of excellence."

Finance recognized

The Government Finance Officers Association of the United States and Canada (GFOA) recently awarded the Certificate of Achievement for Excellence in Financial Reporting to the DRBA for its comprehensive annual financial report (CAFR). The Certificate is the highest form of recognition in government accounting and financial reporting.

As the individual primarily responsible for preparing the award-winning CAFR, Joseph Larontonda, Controller, was recognized with the Award of Financial Reporting Achievement.

"The Authority's dedicated and professional workforce continually strives for excellence — working efficiently and effectively to maintain, support or operate the services that the public uses each and every day," said James T. Johnson, Jr., Executive Director. "The Authority is proud to be recognized with this prestigious award."

CAFRs go beyond the requirements of generally accepted accounting principles to provide the many users of financial statements with a variety of information useful in evaluating the financial condition of specific organizations.

New refrigerated warehouse unveiled at Port Wilmington

Delaware Gov. Ruth Ann Minner joined officials from Dole Food Company and the Diamond State Port Corporation to unveil Dole's new \$16 million warehouse at the Port of Wilmington.

The 92,267-square-foot building is located on 5.5 acres near the Dole container yard at the port and increases Dole's refrigerated warehouse space at the port by 57 percent.

Dole signed a 15-year lease for the expanded property.

Gov. Minner congratulated the Port and Dole for the significant investment. She also stated, "I would like to thank the DRBA for collaborating with the State in funding this important project." The DRBA contributed \$4 million to the project; the State provided \$12 million.

In 2005, Dole discharged nearly one million tons of tropical and Chilean fruit in its facilities at Wilmington, creating



DRBA WAREHOUSE COMPLETED — Delaware Governor Ruth Ann Minner (center) and other officials celebrate the opening of the new Dole Food Co. warehouse at the Port of Wilmington.

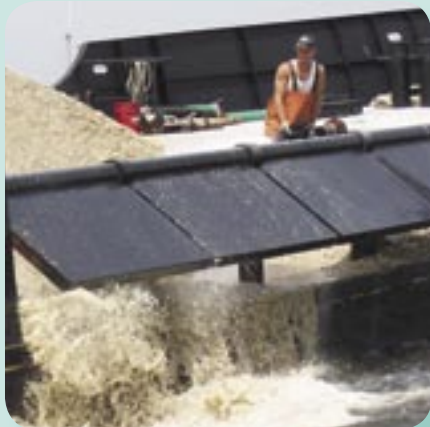
more than 480 direct, indirect and induced jobs. The new warehouse is expected to generate more than 150 additional jobs in Delaware and the region.

F. Michael Parkowski, Vice Chairman of the DRBA, standing at left in photo, participated in the ribbon-cutting ceremony.

Commission actions affect funding for oyster revitalization, CMLF fares

Oyster funding accelerated

The Commissioners of the DRBA approved accelerating the agency's funding commitment to aid the oyster revitalization effort in the Delaware Bay. As part of its agreement with the United States Army Corps of Engineers, the Authority is to provide up to



\$50,000 a year for a three year period.

As James T. Johnson, Jr., Executive Director of the DRBA, noted, "We are happy to

accelerate our funding match which helps enable the Task Force to realize \$2 million in federal resources allocated for the project this year."

Disease, parasites and predators have taken a toll on the oyster population. In order to reverse the problem, a large scale shell planting and transplant program was begun which will provide a clean, hard surface to which larval oysters can attach. The first phase took place last summer when approximately 280,000 bushels of shells were planted. Estimates of projected economic benefit of the 2005 program are \$12.7 million.

CMLF fare structure changes

A new fare schedule for the Cape May - Lewes Ferry was approved earlier this year. The new rates, which went into effect on April 1, incorporate recommendations from recent market research and are designed to promote ridership and generate additional revenue for the operation.

According to James H. Walls, Chief Operations Officer for the DRBA, the new fare structure encourages families and round-trip travelers to use the service. The new value fares include return-trip value fares, discount ticket books for frequent passengers, lower fares for bus passengers and the elimination of all charges for passengers under six years of age.

The temporary fare category for passengers age 6-13, implemented last May, has also been made permanent.

A frequent passenger program for adults comprised of a book of six tickets for \$42 is designed for local residents who use the ferry service on a regular basis.

The CMLF had not had a comprehensive revision of its fare structure since 2002.



Community Connection
DRBA
PO Box 71
New Castle, DE 19720

A PUBLICATION OF THE DELAWARE RIVER & BAY AUTHORITY

COMMUNITY CONNECTION

After more than a century, cruise ships to call at Cape May

In May 2006, after a more than 100-year hiatus, a cruise ship docked at a Cape May port

The Clipper Cruise Lines, a small-ship passenger cruise line, has announced that Cape May will be a twice-a-year destination for its 102-passenger Nantucket Clipper, shown at dock in Cape May at right. The ship has 51 staterooms, 3 decks and travels at 7 nautical miles an hour.

According to Assemblymen Jeff Van Drew and Nelson Albano, the cruises will be 10-day tours with the seventh day spent in Cape May. Passengers will embark in Alexandria, VA and disembark in New York City. Once disembarked, the passengers will be transported by trolley to tour the Victorian seaside resort.

State legislators and DRBA officials announced the return of cruise ships at a news conference at the ferry terminal of the Cape May-Lewes Ferry in Lower Township.

Officials did not provide economic impact figures, but the plan



would expand tourism revenue by opening up Cape May to a new segment of tourists and their dollars.

“People who never even knew Cape May existed, whether they are from another part of the U.S. or traveling internationally, will want to come back to Cape May,” said Donald Rainear, the DRBA’s Deputy Executive Director.

Each visit will last about five hours and will give passengers an up-close look at the resort or the opportunity to participate in a birding and nature tour offered by the non-profit Mid-Atlantic Center for the Arts.

The DRBA spent about \$10,000 to modify the ferry docks so the cruise vessel could be accommodated.

The Assemblymen noted that “as the tourism market has changed, Atlantic City has expanded from just gaming to venues with more dining, entertainment and shopping. In Cape May we also need to look for ways to expand our tourism market.”

According to the *Philadelphia Inquirer*, ships bringing tourists to Cape May is not a new idea. The *Inquirer* noted that “in the 19th century, taking a five-hour ‘steamer ride’ to Cape May from Philadelphia beat an exhausting two-day trip by stagecoach through the Pine Barrens.” Other excursion steamships plied the waters between New York, Washington and the Jersey Shore.