

The New Jersey Department of Education (NJDOE) is pleased to present these annual reports of School Performance. These reports are designed to inform parents, educators and communities about how well a school is performing and preparing its students for college and careers.

In particular, the School Performance Reports seek to:

- **Focus** attention on metrics that are indicative of college and career readiness.
- **Benchmark** a school's performance against other peer schools that are educating similar students, against statewide outcomes, and against state targets to illuminate and build upon a school's strengths and identify areas for improvement.
- **Improve** educational outcomes for students by providing both longitudinal and growth data so that progress can be measured as part of an individual school's efforts to engage in continuous improvement.

While the New Jersey School Performance Reports seek to bring more information to educators and stakeholders about the performance of schools, they do not seek to distill the performance of schools into a single metric, a single score, or a simplified conclusion. Instead, the intention is that educators and stakeholders will engage in deep, lengthy conversations about the full range of the data presented. As educators know well, measuring school performance is both an art and a science. While the School Performance Report brings attention to important student outcomes, NJDOE does not collect data about other essential elements of a school, such as the provision of opportunities to participate and excel in extracurricular activities; the development of non-cognitive skills like time management and perseverance; the pervasiveness of a positive school culture or climate; or the attainment of other employability and technical skills, as many of these data are beyond both the capacity and resources of schools to measure and collect well.

To learn more about New Jersey's school accountability system, please visit: <http://www.nj.gov/education/educators/>.

DEMOGRAPHIC INFORMATION

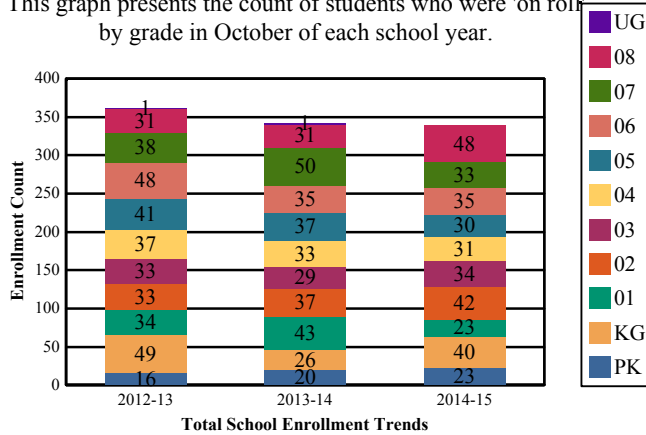
CAMDEN
BROOKLAWN BORO

GRADE SPAN PK-08

Enrollment by Ethnic/Racial Subgroup

Enrollment by Grade

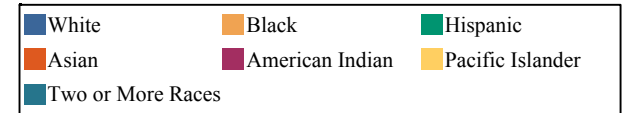
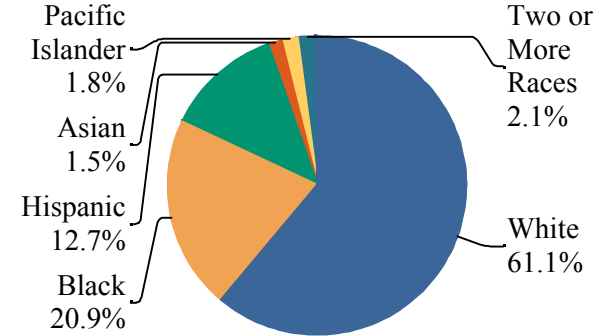
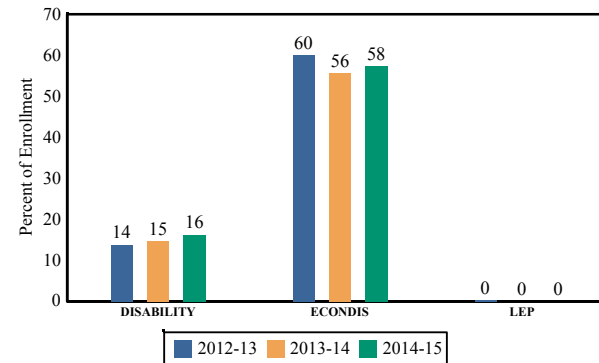
This graph presents the count of students who were 'on roll' by grade in October of each school year.



This graph presents the percentages of enrollment for each subgroup defined by the No Child Left Behind Act of 2001.

Enrollment Trends by Program Participation

This graph presents the percentages of students by program participation who were 'on roll' in October of each school year.

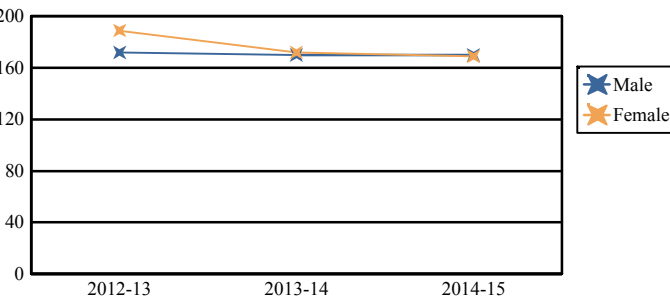


Note: "UG" represents the count of students who are 'on roll' in this school but who are educated in ungraded classrooms, meaning that the classrooms may contain students from multiple grade levels.

Total School Enrollment	
2012-13	361
2013-14	342
2014-15	339

Enrollment by Gender

This graph presents the count of students by gender who were 'on roll' in October of each school year.



	Male	Female
2012-13	172	189
2013-14	170	172
2014-15	170	169

Current Year Enrollment by Program Participation

2014-15	Count of Students	% of Enrollment
Students with Disability	55	16%
Economically Disadvantaged Students	195	57.5%
English Language Learners	0	0.0%

Language Diversity

This table presents the percentage of students who primarily speak each language in their home.

2014-15	Percent
English	98.2%
Bengali	0.9%
Spanish	0.9%

ACADEMIC ACHIEVEMENT

CAMDEN
BROOKLAWN BORO

ALICE COSTELLO ELEMENTARY SCHOOL
301 HAAKON RD.
BROOKLAWN, NJ 08030

GRADE SPAN PK-08

The Academic Achievement section measures the content knowledge that students have in English Language Arts/Literacy (ELA/L) and Math as demonstrated in the 2014-2015 *Partnership for Assessment of Readiness for College and Careers* (PARCC) assessments. The below chart consist of three columns. The first column - Schoolwide Performance - includes the percentage of students in ELA/L and Math who met or exceeded grade level expectations. The middle column - Peer School Percentile - indicates how the school's outcomes compared to its peers. The last column - Statewide Percentile - indicates how the school's outcomes compared to schools across the state.

Academic Achievement Indicators	Schoolwide Performance	Peer Percentile	State Percentile
English Language Arts/Literacy Met or Exceeded Expectation	33%	39	27
Math Met or Exceeded Expectation	21%		

ESEA Waiver - English Language Arts/Literacy

This table presents, for each subgroup in the school, the total number of valid test scores, the percentage of students who met or exceeded expectations, the assessment participation goal, and the participation rate. The participation goal is established as 95% by the United States Department of Education.

Subgroups	Valid Scores	% Meeting Standards	Participation Goal	Participation Rate	Met Participation?
Schoolwide	135	33.4%	95%	68.7%	NO
White	82	41.5%	95%	66.7%	NO
African American	-	-	--	--	--
Hispanic	-	-	--	--	--
American Indian	-	-	--	--	--
Asian	-	-	--	--	--
Two or More Races	-	-	--	--	--
Students with Disability	-	-	--	--	--
English Language Learners	-	-	--	--	--
Economically Disadvantaged Students	74	20.3%	95%	65.3%	NO

YES* = Met Participation Rate (Participation Averaging applied)

Data is presented for subgroups when the count is high enough under ESEA Waiver suppression rules.

ACADEMIC ACHIEVEMENT

ALICE COSTELLO ELEMENTARY SCHOOL
301 HAAKON RD.
BROOKLAWN, NJ 08030

CAMDEN
BROOKLAWN BORO

GRADE SPAN PK-08

ESEA Waiver - Math

This table presents, for each subgroup in the school, the total number of valid test scores, the percentage of students who met or exceeded expectations, the assessment participation goal, and the participation rate. The participation goal is established as 95% by the United States Department of Education.

Subgroups	Valid Scores	% Meeting Standards	Participation Goal	Participation Rate	Met Participation?
Schoolwide	136	20.6%	95%	69.5%	NO
White	82	20.7%	95%	66.7%	NO
African American	-	-	--	--	--
Hispanic	-	-	--	--	--
American Indian	-	-	--	--	--
Asian	-	-	--	--	--
Two or More Races	-	-	--	--	--
Students with Disability	-	-	--	--	--
English Learner Students	-	-	--	--	--
Economically Disadvantaged Students	75	13.3%	95%	66.7%	NO

YES* = Met Participation Rate (Participation Averaging applied)

Data is presented for subgroups when the count is high enough under ESEA Waiver suppression rules.

ACADEMIC ACHIEVEMENT

CAMDEN
BROOKLAWN BORO

GRADE SPAN PK-08

PARCC Performance Level

The PARCC assesses how well students have learned grade-level material in English Language Arts/Literacy (ELA/L) and Math. The tests include questions that measure students' fundamental skills and knowledge, and require them to think critically, solve problems and support or explain their answers.

The PARCC reports students' overall scale scores that range from 650 to 850. To determine whether students have met academic expectations for their grade level/course in ELA/L and Math, students' overall scale scores are categorized into five Performance Levels. Students performing at levels 4 and 5 (met or exceeded expectations) have demonstrated readiness for the next grade level/course, and are on track for college and careers.

Five Performance Levels				
Level 1: Did Not Yet Meet Expectations <i>(Min. 650)</i>	Level 2: Partially Met Expectations	Level 3: Approached Expectations	Level 4: Met Expectations	Level 5: Exceeded Expectations <i>(Max. 850)</i>

ACADEMIC ACHIEVEMENT

CAMDEN
BROOKLAWN BORO

ALICE COSTELLO ELEMENTARY SCHOOL
301 HAAKON RD.
BROOKLAWN, NJ 08030

GRADE SPAN PK-08

PARCC ELA Performance Distribution - Grade - 03

This table presents the grade level outcomes, as measured by PARCC, in all five performance levels for all subgroups. PARCC consists of five performance levels: Level 1 - Did not yet meet grade-level expectations, Level 2 -Partially met expectations, Level 3 - Approached expectations, Level 4 - Met expectations, and Level 5 - Exceeded expectations.

Subgroup	Valid Scores	Mean Scale Score	State Mean Scale Score	% Level_1	% Level_2	% Level_3	% Level_4	% Level_5	% Met/ Exceeded Expectation	State % Met/Exceeded Expectation
Schoolwide	27	744	744	11%	19%	30%	37%	4%	41%	44%
White	18	750	753	11%	11%	28%	44%	6%	50%	55%
African American	-	-	725	-	-	-	-	-	-	26%
Hispanic	-	-	727	-	-	-	-	-	-	26%
American Indian	-	-	738	-	-	-	-	-	-	40%
Asian	-	-	769	-	-	-	-	-	-	70%
Two or More Races	-	-	751	-	-	-	-	-	-	53%
Students with Disability	-	-	718	-	-	-	-	-	-	24%
English Language Learners	-	-	709	-	-	-	-	-	-	11%
Economically Disadvantaged Students	17	742	724	6%	29%	29%	35%	0%	35%	24%

ACADEMIC ACHIEVEMENT

**CAMDEN
BROOKLAWN BORO**

**ALICE COSTELLO ELEMENTARY SCHOOL
301 HAAKON RD.
BROOKLAWN, NJ 08030**

GRADE SPAN PK-08

PARCC ELA Performance Distribution - Grade - 04

This table presents the grade level outcomes, as measured by PARCC, in all five performance levels for all subgroups. PARCC consists of five performance levels: Level 1 - Did not yet meet grade-level expectations, Level 2 -Partially met expectations, Level 3 - Approached expectations, Level 4 - Met expectations, and Level 5 - Exceeded expectations.

Subgroup	Valid Scores	Mean Scale Score	State Mean Scale Score	% Level_1	% Level_2	% Level_3	% Level_4	% Level_5	% Met/ Exceeded Expectation	State % Met/Exceeded Expectation
Schoolwide	22	741	751	0%	18%	50%	27%	5%	32%	52%
White	16	745	758	0%	19%	38%	38%	6%	44%	63%
African American	-	-	733	-	-	-	-	-	-	30%
Hispanic	-	-	737	-	-	-	-	-	-	35%
American Indian	-	-	746	-	-	-	-	-	-	52%
Asian	-	-	773	-	-	-	-	-	-	78%
Two or More Races	-	-	760	-	-	-	-	-	-	62%
Students with Disability	-	-	725	-	-	-	-	-	-	25%
English Language Learners	-	-	717	-	-	-	-	-	-	15%
Economically Disadvantaged Students	13	732	734	0%	31%	54%	15%	0%	15%	31%

ACADEMIC ACHIEVEMENT

ALICE COSTELLO ELEMENTARY SCHOOL
301 HAAKON RD.
BROOKLAWN, NJ 08030

CAMDEN
BROOKLAWN BORO

GRADE SPAN PK-08

PARCC ELA Performance Distribution - Grade - 05

This table presents the grade level outcomes, as measured by PARCC, in all five performance levels for all subgroups. PARCC consists of five performance levels: Level 1 - Did not yet meet grade-level expectations, Level 2 -Partially met expectations, Level 3 - Approached expectations, Level 4 - Met expectations, and Level 5 - Exceeded expectations.

Subgroup	Valid Scores	Mean Scale Score	State Mean Scale Score	% Level_1	% Level_2	% Level_3	% Level_4	% Level_5	% Met/ Exceeded Expectation	State % Met/Exceeded Expectation
Schoolwide	29	736	751	7%	31%	34%	28%	0%	28%	53%
White	14	733	757	7%	21%	43%	29%	0%	29%	62%
African American	-	-	734	-	-	-	-	-	-	31%
Hispanic	-	-	737	-	-	-	-	-	-	35%
American Indian	-	-	746	-	-	-	-	-	-	45%
Asian	-	-	771	-	-	-	-	-	-	77%
Two or More Races	-	-	758	-	-	-	-	-	-	61%
Students with Disability	-	-	723	-	-	-	-	-	-	21%
English Language Learners	-	-	717	-	-	-	-	-	-	15%
Economically Disadvantaged Students	16	730	734	13%	38%	31%	19%	0%	19%	31%

ACADEMIC ACHIEVEMENT

**CAMDEN
BROOKLAWN BORO**

**ALICE COSTELLO ELEMENTARY SCHOOL
301 HAAKON RD.
BROOKLAWN, NJ 08030**

GRADE SPAN PK-08

PARCC ELA Performance Distribution - Grade - 06

This table presents the grade level outcomes, as measured by PARCC, in all five performance levels for all subgroups. PARCC consists of five performance levels: Level 1 - Did not yet meet grade-level expectations, Level 2 -Partially met expectations, Level 3 - Approached expectations, Level 4 - Met expectations, and Level 5 - Exceeded expectations.

Subgroup	Valid Scores	Mean Scale Score	State Mean Scale Score	% Level_1	% Level_2	% Level_3	% Level_4	% Level_5	% Met/ Exceeded Expectation	State % Met/Exceeded Expectation
Schoolwide	23	748	749	0%	17%	35%	43%	4%	48%	50%
White	14	752	755	0%	21%	21%	50%	7%	57%	59%
African American	-	-	732	-	-	-	-	-	-	29%
Hispanic	-	-	736	-	-	-	-	-	-	34%
American Indian	-	-	743	-	-	-	-	-	-	39%
Asian	-	-	770	-	-	-	-	-	-	77%
Two or More Races	-	-	753	-	-	-	-	-	-	57%
Students with Disability	-	-	718	-	-	-	-	-	-	17%
English Language Learners	-	-	711	-	-	-	-	-	-	11%
Economically Disadvantaged Students	12	734	733	0%	25%	58%	17%	0%	17%	30%

ACADEMIC ACHIEVEMENT

**CAMDEN
BROOKLAWN BORO**

**ALICE COSTELLO ELEMENTARY SCHOOL
301 HAAKON RD.
BROOKLAWN, NJ 08030**

GRADE SPAN PK-08

PARCC ELA Performance Distribution - Grade - 07

This table presents the grade level outcomes, as measured by PARCC, in all five performance levels for all subgroups. PARCC consists of five performance levels: Level 1 - Did not yet meet grade-level expectations, Level 2 -Partially met expectations, Level 3 - Approached expectations, Level 4 - Met expectations, and Level 5 - Exceeded expectations.

Subgroup	Valid Scores	Mean Scale Score	State Mean Scale Score	% Level_1	% Level_2	% Level_3	% Level_4	% Level_5	% Met/ Exceeded Expectation	State % Met/Exceeded Expectation
Schoolwide	19	714	750	26%	32%	21%	21%	0%	21%	53%
White	13	723	757	15%	31%	23%	31%	0%	31%	61%
African American	-	-	730	-	-	-	-	-	-	31%
Hispanic	-	-	736	-	-	-	-	-	-	36%
American Indian	-	-	746	-	-	-	-	-	-	49%
Asian	-	-	777	-	-	-	-	-	-	80%
Two or More Races	-	-	756	-	-	-	-	-	-	58%
Students with Disability	-	-	713	-	-	-	-	-	-	18%
English Language Learners	-	-	703	-	-	-	-	-	-	11%
Economically Disadvantaged Students	-	-	733	-	-	-	-	-	-	33%

ACADEMIC ACHIEVEMENT

CAMDEN
BROOKLAWN BORO

ALICE COSTELLO ELEMENTARY SCHOOL
301 HAAKON RD.
BROOKLAWN, NJ 08030

GRADE SPAN PK-08

PARCC ELA Performance Distribution - Grade - 08

This table presents the grade level outcomes, as measured by PARCC, in all five performance levels for all subgroups. PARCC consists of five performance levels: Level 1 - Did not yet meet grade-level expectations, Level 2 -Partially met expectations, Level 3 - Approached expectations, Level 4 - Met expectations, and Level 5 - Exceeded expectations.

Subgroup	Valid Scores	Mean Scale Score	State Mean Scale Score	% Level_1	% Level_2	% Level_3	% Level_4	% Level_5	% Met/ Exceeded Expectation	State % Met/Exceeded Expectation
Schoolwide	15	730	750	20%	27%	27%	20%	7%	27%	53%
White	-	-	757	-	-	-	-	-	-	61%
African American	-	-	730	-	-	-	-	-	-	31%
Hispanic	-	-	735	-	-	-	-	-	-	37%
American Indian	-	-	741	-	-	-	-	-	-	49%
Asian	-	-	778	-	-	-	-	-	-	80%
Two or More Races	-	-	753	-	-	-	-	-	-	55%
Students with Disability	-	-	713	-	-	-	-	-	-	16%
English Language Learners	-	-	701	-	-	-	-	-	-	9%
Economically Disadvantaged Students	-	-	732	-	-	-	-	-	-	34%

ACADEMIC ACHIEVEMENT

CAMDEN
BROOKLAWN BORO

ALICE COSTELLO ELEMENTARY SCHOOL
301 HAAKON RD.
BROOKLAWN, NJ 08030

GRADE SPAN PK-08

PARCC MATH - Performance Distribution - Grade - 03

This table presents the grade level outcomes, as measured by PARCC, in all five performance levels for all subgroups. PARCC consists of five performance levels: Level 1 - Did not yet meet grade-level expectations, Level 2 -Partially met expectations, Level 3 - Approached expectations, Level 4 - Met expectations, and Level 5 - Exceeded expectations.

Subgroup	Valid Scores	Mean Scale Score	State Mean Scale Score	% Level_1	% Level_2	% Level_3	% Level_4	% Level_5	% Met/ Exceeded Expectation	State % Met/Exceeded Expectation
Schoolwide	27	743	746	4%	15%	44%	37%	0%	37%	46%
White	18	743	752	0%	17%	50%	33%	0%	33%	56%
African American	-	-	728	-	-	-	-	-	-	25%
Hispanic	-	-	733	-	-	-	-	-	-	28%
American Indian	-	-	742	-	-	-	-	-	-	41%
Asian	-	-	772	-	-	-	-	-	-	77%
Two or More Races	-	-	751	-	-	-	-	-	-	54%
Students with Disability	-	-	727	-	-	-	-	-	-	27%
English Language Learners	-	-	724	-	-	-	-	-	-	17%
Economically Disadvantaged Students	17	742	730	6%	12%	47%	35%	0%	35%	26%

ACADEMIC ACHIEVEMENT

**CAMDEN
BROOKLAWN BORO**

**ALICE COSTELLO ELEMENTARY SCHOOL
301 HAAKON RD.
BROOKLAWN, NJ 08030**

GRADE SPAN PK-08

PARCC MATH - Performance Distribution - Grade - 04

This table presents the grade level outcomes, as measured by PARCC, in all five performance levels for all subgroups. PARCC consists of five performance levels: Level 1 - Did not yet meet grade-level expectations, Level 2 -Partially met expectations, Level 3 - Approached expectations, Level 4 - Met expectations, and Level 5 - Exceeded expectations.

Subgroup	Valid Scores	Mean Scale Score	State Mean Scale Score	% Level_1	% Level_2	% Level_3	% Level_4	% Level_5	% Met/ Exceeded Expectation	State % Met/Exceeded Expectation
Schoolwide	22	732	744	9%	27%	50%	14%	0%	14%	42%
White	16	733	749	13%	25%	44%	19%	0%	19%	50%
African American	-	-	727	-	-	-	-	-	-	20%
Hispanic	-	-	732	-	-	-	-	-	-	26%
American Indian	-	-	740	-	-	-	-	-	-	40%
Asian	-	-	769	-	-	-	-	-	-	75%
Two or More Races	-	-	750	-	-	-	-	-	-	52%
Students with Disability	-	-	724	-	-	-	-	-	-	21%
English Language Learners	-	-	722	-	-	-	-	-	-	15%
Economically Disadvantaged Students	-	-	730	-	-	-	-	-	-	23%

ACADEMIC ACHIEVEMENT

**CAMDEN
BROOKLAWN BORO**

**ALICE COSTELLO ELEMENTARY SCHOOL
301 HAAKON RD.
BROOKLAWN, NJ 08030**

GRADE SPAN PK-08

PARCC MATH - Performance Distribution - Grade - 05

This table presents the grade level outcomes, as measured by PARCC, in all five performance levels for all subgroups. PARCC consists of five performance levels: Level 1 - Did not yet meet grade-level expectations, Level 2 -Partially met expectations, Level 3 - Approached expectations, Level 4 - Met expectations, and Level 5 - Exceeded expectations.

Subgroup	Valid Scores	Mean Scale Score	State Mean Scale Score	% Level_1	% Level_2	% Level_3	% Level_4	% Level_5	% Met/ Exceeded Expectation	State % Met/Exceeded Expectation
Schoolwide	30	727	744	17%	30%	37%	13%	3%	17%	42%
White	15	728	749	7%	40%	40%	13%	0%	13%	49%
African American	-	-	728	-	-	-	-	-	-	21%
Hispanic	-	-	733	-	-	-	-	-	-	26%
American Indian	-	-	745	-	-	-	-	-	-	46%
Asian	-	-	768	-	-	-	-	-	-	74%
Two or More Races	-	-	749	-	-	-	-	-	-	50%
Students with Disability	-	-	724	-	-	-	-	-	-	19%
English Language Learners	-	-	724	-	-	-	-	-	-	17%
Economically Disadvantaged Students	-	-	731	-	-	-	-	-	-	23%

ACADEMIC ACHIEVEMENT

CAMDEN
BROOKLAWN BORO

ALICE COSTELLO ELEMENTARY SCHOOL
301 HAAKON RD.
BROOKLAWN, NJ 08030

GRADE SPAN PK-08

PARCC MATH - Performance Distribution - Grade - 06

This table presents the grade level outcomes, as measured by PARCC, in all five performance levels for all subgroups. PARCC consists of five performance levels: Level 1 - Did not yet meet grade-level expectations, Level 2 -Partially met expectations, Level 3 - Approached expectations, Level 4 - Met expectations, and Level 5 - Exceeded expectations.

Subgroup	Valid Scores	Mean Scale Score	State Mean Scale Score	% Level_1	% Level_2	% Level_3	% Level_4	% Level_5	% Met/ Exceeded Expectation	State % Met/Exceeded Expectation
Schoolwide	23	733	743	0%	43%	30%	26%	0%	26%	42%
White	14	735	749	0%	43%	29%	29%	0%	29%	50%
African American	-	-	726	-	-	-	-	-	-	19%
Hispanic	-	-	731	-	-	-	-	-	-	25%
American Indian	-	-	740	-	-	-	-	-	-	35%
Asian	-	-	768	-	-	-	-	-	-	75%
Two or More Races	-	-	745	-	-	-	-	-	-	44%
Students with Disability	-	-	718	-	-	-	-	-	-	15%
English Language Learners	-	-	718	-	-	-	-	-	-	14%
Economically Disadvantaged Students	12	729	729	0%	50%	33%	17%	0%	17%	23%

ACADEMIC ACHIEVEMENT

**CAMDEN
BROOKLAWN BORO**

**ALICE COSTELLO ELEMENTARY SCHOOL
301 HAAKON RD.
BROOKLAWN, NJ 08030**

GRADE SPAN PK-08

PARCC MATH - Performance Distribution - Grade - 07

This table presents the grade level outcomes, as measured by PARCC, in all five performance levels for all subgroups. PARCC consists of five performance levels: Level 1 - Did not yet meet grade-level expectations, Level 2 -Partially met expectations, Level 3 - Approached expectations, Level 4 - Met expectations, and Level 5 - Exceeded expectations.

Subgroup	Valid Scores	Mean Scale Score	State Mean Scale Score	% Level_1	% Level_2	% Level_3	% Level_4	% Level_5	% Met/ Exceeded Expectation	State % Met/Exceeded Expectation
Schoolwide	-	-	740	-	-	-	-	-	-	38%
White	-	-	745	-	-	-	-	-	-	46%
African American	-	-	725	-	-	-	-	-	-	17%
Hispanic	-	-	730	-	-	-	-	-	-	23%
American Indian	-	-	734	-	-	-	-	-	-	32%
Asian	-	-	760	-	-	-	-	-	-	68%
Two or More Races	-	-	742	-	-	-	-	-	-	43%
Students with Disability	-	-	715	-	-	-	-	-	-	11%
English Language Learners	-	-	717	-	-	-	-	-	-	11%
Economically Disadvantaged Students	-	-	728	-	-	-	-	-	-	21%

ACADEMIC ACHIEVEMENT

**CAMDEN
BROOKLAWN BORO**

**ALICE COSTELLO ELEMENTARY SCHOOL
301 HAAKON RD.
BROOKLAWN, NJ 08030**

GRADE SPAN PK-08

PARCC MATH - Performance Distribution - Grade - 08

This table presents the grade level outcomes, as measured by PARCC, in all five performance levels for all subgroups. PARCC consists of five performance levels: Level 1 - Did not yet meet grade-level expectations, Level 2 -Partially met expectations, Level 3 - Approached expectations, Level 4 - Met expectations, and Level 5 - Exceeded expectations.

Subgroup	Valid Scores	Mean Scale Score	State Mean Scale Score	% Level_1	% Level_2	% Level_3	% Level_4	% Level_5	% Met/ Exceeded Expectation	State % Met/Exceeded Expectation
Schoolwide	16	722	726	25%	13%	44%	19%	0%	19%	24%
White	-	-	732	-	-	-	-	-	-	29%
African American	-	-	715	-	-	-	-	-	-	14%
Hispanic	-	-	721	-	-	-	-	-	-	19%
American Indian	-	-	722	-	-	-	-	-	-	15%
Asian	-	-	744	-	-	-	-	-	-	46%
Two or More Races	-	-	724	-	-	-	-	-	-	24%
Students with Disability	-	-	705	-	-	-	-	-	-	9%
English Language Learners	-	-	706	-	-	-	-	-	-	10%
Economically Disadvantaged Students	-	-	719	-	-	-	-	-	-	17%

ACADEMIC ACHIEVEMENT

CAMDEN
BROOKLAWN BORO

GRADE SPAN PK-08

ALICE COSTELLO ELEMENTARY SCHOOL
301 HAAKON RD.
BROOKLAWN, NJ 08030

2015 National Assessment Educational Progress (NAEP)

The National Assessment of Educational Progress (NAEP) is the largest national assessment of what our nation’s students know and can do. NAEP assesses fourth-, eighth-, and twelfth-grade students in subjects such as reading, mathematics, science, and writing. The reporting of NAEP scores on state report cards is a federal mandate. The results of NAEP are also published as the Nation’s Report Card, and are available for the nation, states, and, in some cases, urban districts. The NAEP scores on the report card include grades four and eight 2015 reading and math scores for New Jersey which are the last scores published.

For subgroup outcomes, visit:

- Reading Grade 4 <http://www.nj.gov/education/pr/1415/naep/naep4read.html>
- Reading Grade 8 <http://www.nj.gov/education/pr/1415/naep/naep8read.html>
- Math Grade 4 <http://www.nj.gov/education/pr/1415/naep/naep4math.html>
- Math Grade 8 <http://www.nj.gov/education/pr/1415/naep/naep8math.html>

For more information, visit <http://nces.ed.gov/nationsreportcard/>

Proficiency Percentages

Subject	Grade	State/Nation	Below Basic	Basic	Proficient	Advanced
Reading	Grade 4	State (NJ)	25	33	31	12
	Grade 4	Nation	31	33	27	9
	Grade 8	State (NJ)	20	39	35	6
	Grade 8	Nation	24	42	31	4
Math	Grade 4	State (NJ)	14	39	38	9
	Grade 4	Nation	18	42	33	7
	Grade 8	State (NJ)	21	32	30	16
	Grade 8	Nation	29	38	25	8

ACADEMIC ACHIEVEMENT

CAMDEN
BROOKLAWN BORO

GRADE SPAN PK-08

07-0580-010
ALICE COSTELLO ELEMENTARY SCHOOL
301 HAAKON RD.
BROOKLAWN, NJ 08030

NJASK Results - Science Grade Level - 04

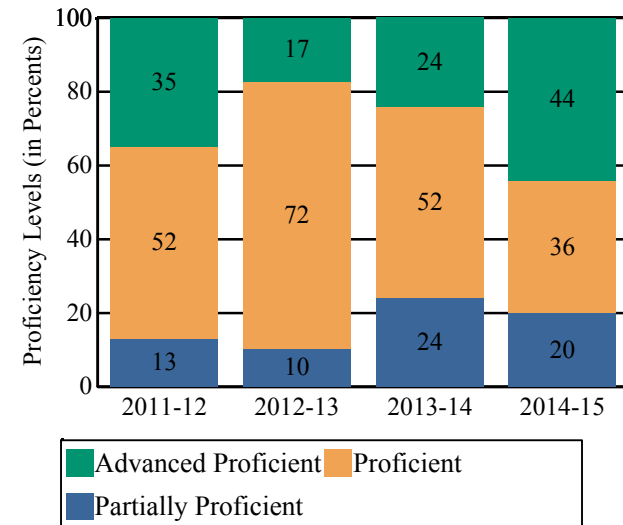
This table presents the grade level proficiency results, as measured by NJASK, in Advanced Proficient, Proficient, and Partially Proficient categories for all appropriate subgroups.

Subgroups	Advanced Proficient	Proficient	Partially Proficient
Schoolwide	44%	36%	20%
White	56%	33%	11%
African American	-	-	-
Hispanic	-	-	-
American Indian	-	-	-
Asian	-	-	-
Two or More Races	-	-	-
Students with Disability	-	-	-
English Language Learners	-	-	-
Economically Disadvantaged Students	36%	43%	21%

Data is presented for subgroups when the count is high enough under ESEA Waiver suppression rules.

NJASK Proficiency Trends - Science - Grade Level - 04

This graph presents the grade level outcomes in the categories of Advanced Proficient, Proficient, and Partially Proficient over the last four years.



ACADEMIC ACHIEVEMENT

**CAMDEN
BROOKLAWN BORO**

GRADE SPAN PK-08

**07-0580-010
ALICE COSTELLO ELEMENTARY SCHOOL
301 HAAKON RD.
BROOKLAWN, NJ 08030**

NJASK Results - Science Grade Level - 08

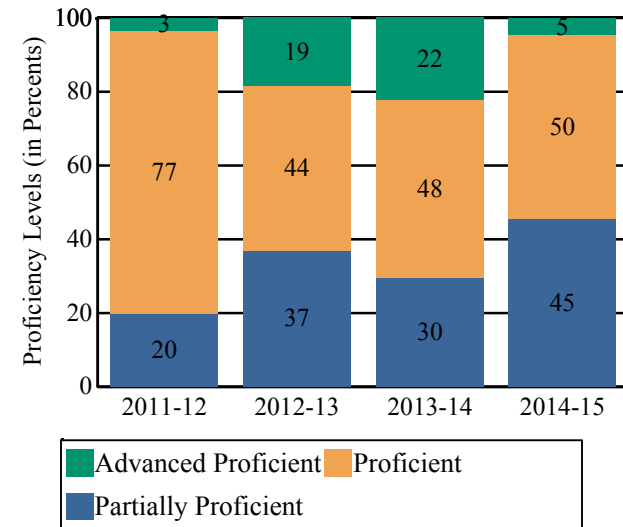
This table presents the grade level proficiency results, as measured by NJASK, in Advanced Proficient, Proficient, and Partially Proficient categories for all appropriate subgroups.

Subgroups	Advanced Proficient	Proficient	Partially Proficient
Schoolwide	5%	50%	45%
White	8%	54%	38%
African American	0%	18%	82%
Hispanic	-	-	-
American Indian	-	-	-
Asian	-	-	-
Two or More Races	-	-	-
Students with Disability	-	-	-
English Language Learners	-	-	-
Economically Disadvantaged Students	7%	41%	52%

Data is presented for subgroups when the count is high enough under ESEA Waiver suppression rules.

NJASK Proficiency Trends - Science - Grade Level - 08

This graph presents the grade level outcomes in the categories of Advanced Proficient, Proficient, and Partially Proficient over the last four years.



Students in both elementary and middle schools begin to demonstrate college readiness behaviors long before they even enter high school. Among the behaviors that research has shown to be indicative of successfully graduating high school is regularly attending school. For all elementary and middle schools, this includes the percentage of students that are chronically absent each year, defined as missing more than 10% of possible school days. Also presented is the percentage of students participating in Visual and Performing Arts coursework and Algebra I course outcomes.

Algebra I Course Enrollment

This table presents the count of students in this school who were reported in the Algebra I course code in NJSMART and the count of students who took the Algebra I test of PARCC.

Algebra I Enrollment Count	Algebra I PARCC Test Count
0	0

Algebra I Test Taking

This table presents the percentage of students, as reported in NJSMART, who earned a C or higher in their Algebra I course and the percentage of students who met or exceeded expectation on the Algebra I test of PARCC.

Algebra I Percent C or Better	Algebra I PARCC Percent Met or Exceeded Expectation
0.0%	0.0%

- Data Suppressed to protect the confidentiality of students

COLLEGE AND CAREER READINESS

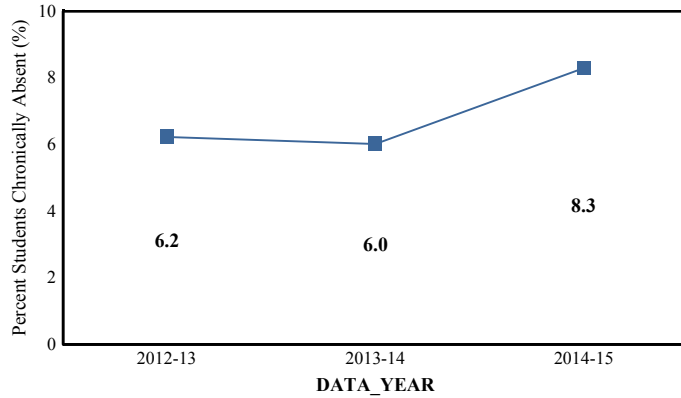
CAMDEN
BROOKLAWN BORO

07-0580-010
ALICE COSTELLO ELEMENTARY SCHOOL
301 HAAKON RD.
BROOKLAWN, NJ 08030

GRADE SPAN PK-08

Chronic Absenteeism Trend

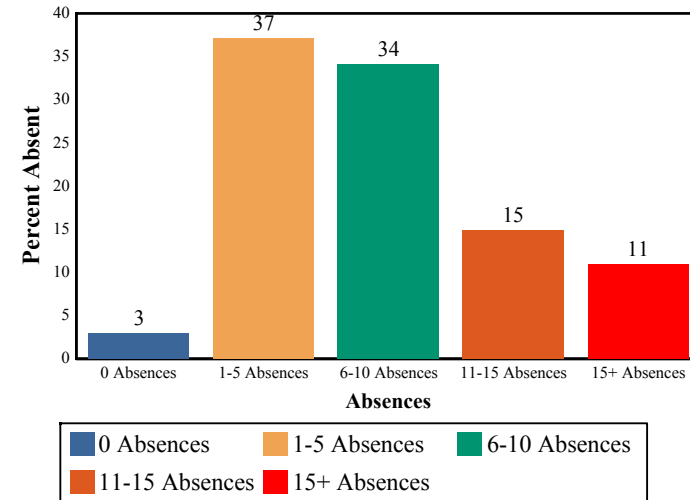
This graph presents the percentage of the enrolled students who were chronically absent for the past three years.



Chronic Absenteeism for 2014-15	8.31%
--	--------------

Absenteeism

The chart below presents the percentage of students who were absent in each category of absence: 0 absences, 1- 5 absences, 6 - 10 absences, 11 - 15 absences, and more than 15 absences. An absence is defined as being 'not present' and includes the days missed regardless of whether they were determined to be excused or unexcused by the school.



Visual and Performing Arts

The chart below contains the percentage of students who were enrolled in at least one Dance, Drama/Theater, Music or Visual Arts class in this school. The last row shows the percentage of students who were enrolled in any Visual and Performing Arts classes in the school.

Percent of Students Enrolled	School	State
Dance	N/R	1.6%
Drama/Theater	N/R	3.9%
Music	100.0%	66.0%
Visual Arts	100.0%	71.1%
Total: All Visual and Performing Arts	100.0%	89.8%

N/R - Data Not Reported

STUDENT GROWTH

CAMDEN
BROOKLAWN BORO

ALICE COSTELLO ELEMENTARY SCHOOL
301 HAAKON RD.
BROOKLAWN, NJ 08030

GRADE SPAN PK-08

This section of the performance report presents data about student growth, utilizing the Student Growth Percentile Methodology (SGP). SGP creates a measure of how students progressed in grades 4 through 8 in Language Arts Literacy and in grades 4 through 7 in Math when compared to other students with a similar test score history. A short video explaining the methodology can be found here: <http://www.state.nj.us/education/njsmart/performance/>

The below chart consist of five columns with measures. The first column - Schoolwide Performance - presents the schoolwide median growth score in either English Language Arts/Literacy or Mathematics for all students in the school. The second column - Peer Percentile - indicates how the school's growth performance compares to its group of peer schools. The third column - Statewide Percentile - indicates how a school compares to schools across the state. The last column - Met Target? - indicates whether the school's performance met or exceeded the statewide target, which was set to 35.

The fourth row presents the averages of the peer school percentiles, the averages of statewide percentiles, the percentage of statewide targets met.

Student Growth Indicators	Schoolwide Performance	Peer Percentile	Statewide Percentile	Statewide Target	Met Target?
Student Growth on Language Arts	52	81	56	35	YES
Student Growth on Math	39	36	22	35	YES
		59	39		100%

Student Growth

This table presents for all students with growth scores the interaction between their performance on PARCC and their growth scores. For example, in the top left cell the percentage of students who are both in Level 1 - Did not yet meet expectations AND also demonstrating low growth is displayed.

Language Arts

(Expectations)	GROWTH		
	Low	Typical	High
Did Not Yet Meet	7%	0%	0%
Partially Met	13%	9%	3%
Approached	12%	15%	10%
Met	3%	8%	18%
Exceeded	1%	0%	1%

Math

(Expectations)	GROWTH		
	Low	Typical	High
Did Not Yet Meet	11%	3%	0%
Partially Met	16%	11%	6%
Approached	11%	16%	11%
Met	3%	8%	4%
Exceeded	0%	1%	0%

Low Growth is defined as an Student Growth Percentile score less than 35.
Typical Growth is defined as an Student Growth Percentile score between 35 and 65.
High Growth is defined as a Student Growth Percentile score higher than 65.

WITHIN SCHOOL ACHIEVEMENT GAP

ALICE COSTELLO ELEMENTARY SCHOOL
301 HAAKON RD.
BROOKLAWN, NJ 08030

CAMDEN
BROOKLAWN BORO

GRADE SPAN PK-08

This section of the performance report presents data about the achievement gap that exists within a school - as measured by the difference between the students' scale scores at the 25th and 75th percentile in the school, the Interquartile Range (IQR). Taken together with an understanding of the overall and average achievement levels in the school, the IQR furthers an understanding of the range of student outcomes that exist in a school. A school gap smaller than the state gap indicates that the school's range of student outcomes is narrower than the state's while a school gap larger than the state gap indicates that the school's range of student outcomes is broader than the state's.

Grade Level - 03

PARCC Language Arts 25th %ile vs 75th%ile

This table presents the scale scores associated with students at the bottom (0th percentile), the 25th percentile, the 50th percentile, the 75th percentile and the top (99th percentile) of school's distribution.

Percentile	School Scale Score	State Scale Score
99th	808	850
75th	763	770
50th	742	743
25th	719	715
0th	677	650

	Scale Score Gap - School	Scale Score Gap - State
25th vs 75th Gap	44	55

Grade Level - 03

PARCC MATH 25th %ile vs 75th%ile

This table presents the scale scores associated with students at the bottom (0th percentile), the 25th percentile, the 50th percentile, the 75th percentile and the top (99th percentile) of school's distribution.

Percentile	School Scale Score	State Scale Score
99th	785	850
75th	766	767
50th	740	745
25th	727	722
0th	686	650

	Scale Score Gap - School	Scale Score Gap - State
25th vs 75th Gap	39	45

WITHIN SCHOOL ACHIEVEMENT GAP

CAMDEN
BROOKLAWN BORO

GRADE SPAN PK-08

Grade Level - 04

PARCC Language Arts 25th %ile vs 75th%ile

This table presents the scale scores associated with students at the bottom (0th percentile), the 25th percentile, the 50th percentile, the 75th percentile and the top (99th percentile) of school's distribution.

Percentile	School Scale Score	State Scale Score
99th	796	850
75th	756	773
50th	736	750
25th	728	728
0th	703	650

	Scale Score Gap - School	Scale Score Gap - State
25th vs 75th Gap	28	45

Grade Level - 05

PARCC Language Arts 25th %ile vs 75th%ile

This table presents the scale scores associated with students at the bottom (0th percentile), the 25th percentile, the 50th percentile, the 75th percentile and the top (99th percentile) of school's distribution.

Percentile	School Scale Score	State Scale Score
99th	777	850
75th	751	773
50th	734	751
25th	722	728
0th	694	650

	Scale Score Gap - School	Scale Score Gap - State
25th vs 75th Gap	29	45

Grade Level - 04

PARCC MATH 25th %ile vs 75th%ile

This table presents the scale scores associated with students at the bottom (0th percentile), the 25th percentile, the 50th percentile, the 75th percentile and the top (99th percentile) of school's distribution.

Percentile	School Scale Score	State Scale Score
99th	777	850
75th	740	764
50th	731	742
25th	717	721
0th	696	650

	Scale Score Gap - School	Scale Score Gap - State
25th vs 75th Gap	23	43

Grade Level - 05

PARCC MATH 25th %ile vs 75th%ile

This table presents the scale scores associated with students at the bottom (0th percentile), the 25th percentile, the 50th percentile, the 75th percentile and the top (99th percentile) of school's distribution.

Percentile	School Scale Score	State Scale Score
99th	786	850
75th	740	763
50th	726	743
25th	715	723
0th	692	650

	Scale Score Gap - School	Scale Score Gap - State
25th vs 75th Gap	25	40

WITHIN SCHOOL ACHIEVEMENT GAP

CAMDEN
BROOKLAWN BORO

GRADE SPAN PK-08

Grade Level - 06

PARCC Language Arts 25th %ile vs 75th%ile

This table presents the scale scores associated with students at the bottom (0th percentile), the 25th percentile, the 50th percentile, the 75th percentile and the top (99th percentile) of school's distribution.

Percentile	School Scale Score	State Scale Score
99th	793	850
75th	764	770
50th	752	749
25th	726	726
0th	713	650

	Scale Score Gap - School	Scale Score Gap - State
25th vs 75th Gap	38	44

Grade Level - 07

PARCC Language Arts 25th %ile vs 75th%ile

This table presents the scale scores associated with students at the bottom (0th percentile), the 25th percentile, the 50th percentile, the 75th percentile and the top (99th percentile) of school's distribution.

Percentile	School Scale Score	State Scale Score
99th	770	850
75th	737	776
50th	721	751
25th	705	724
0th	659	650

	Scale Score Gap - School	Scale Score Gap - State
25th vs 75th Gap	32	52

Grade Level - 06

PARCC MATH 25th %ile vs 75th%ile

This table presents the scale scores associated with students at the bottom (0th percentile), the 25th percentile, the 50th percentile, the 75th percentile and the top (99th percentile) of school's distribution.

Percentile	School Scale Score	State Scale Score
99th	777	850
75th	743	763
50th	731	742
25th	717	721
0th	700	650

	Scale Score Gap - School	Scale Score Gap - State
25th vs 75th Gap	26	42

Grade Level - 07

PARCC MATH 25th %ile vs 75th%ile

This table presents the scale scores associated with students at the bottom (0th percentile), the 25th percentile, the 50th percentile, the 75th percentile and the top (99th percentile) of school's distribution.

Percentile	School Scale Score	State Scale Score
99th	N/A	850
75th	N/A	759
50th	N/A	740
25th	N/A	720
0th	N/A	650

	Scale Score Gap - School	Scale Score Gap - State
25th vs 75th Gap	N/A	39

WITHIN SCHOOL ACHIEVEMENT GAP

CAMDEN
BROOKLAWN BORO

Grade Level - 08

PARCC Language Arts 25th %ile vs 75th%ile

This table presents the scale scores associated with students at the bottom (0th percentile), the 25th percentile, the 50th percentile, the 75th percentile and the top (99th percentile) of school's distribution.

Percentile	School Scale Score	State Scale Score
99th	802	850
75th	753	777
50th	737	751
25th	705	723
0th	683	650

	Scale Score Gap - School	Scale Score Gap - State
25th vs 75th Gap	48	54

Grade Level - 08

PARCC MATH 25th %ile vs 75th%ile

This table presents the scale scores associated with students at the bottom (0th percentile), the 25th percentile, the 50th percentile, the 75th percentile and the top (99th percentile) of school's distribution.

Percentile	School Scale Score	State Scale Score
99th	767	850
75th	736	748
50th	727	726
25th	707	704
0th	672	650

	Scale Score Gap - School	Scale Score Gap - State
25th vs 75th Gap	29	44

SCHOOL CLIMATE
CAMDEN
BROOKLAWN BORO

GRADE SPAN PK-08

Length of School Day

This table presents the amount of time a school is in session for a typical student on a normal school day.

	School
2014-15	6 Hrs. 30 Mins.

Student Suspension Rate

This table presents the percentage of students who were suspended one or more times during the school year.

	School
2014-15	12.1%

Instructional Time

This table presents the amount of time that a typical student is engaged in instructional activities under the supervision of a certified teacher.

2014-15	School
Full Time	5 Hrs. 30 Mins.
Shared Time	0 Hrs. 0 Mins.

Student Expulsions

This table presents the number of students who were expelled from the school and district during the school year.

	School
2014-15	0

Student to Staff Ratio

This table presents the count of students per faculty member or administrator in the school. All staff are counted in full-time equivalents.

2014-15	School
Faculty	11
Administrators	188

SCHOOL PEER GROUP

**CAMDEN
BROOKLAWN BORO**

**ALICE COSTELLO ELEMENTARY SCHOOL
301 HAAKON RD.
BROOKLAWN, NJ 08030**

GRADE SPAN PK-08

This table presents the list of peer schools in alphabetical order by county name that was created specifically for this school (highlighted in yellow). Peer schools are drawn from across the state and represent schools that have similar grade configurations and that are educating students of similar demographic characteristics, as measured by enrollment in Free/Reduced Lunch Programs, Limited English Proficiency or Special Education Programs.

<u>COUNTY NAME</u>	<u>DISTRICT NAME</u>	<u>SCHOOL NAME</u>	<u>CDS CODE</u>	<u>GRADESPAN</u>	<u>ECONOMICALLY DISADVANTAGED</u>	<u>ENGLISH LANGUAGE LEARNERS</u>	<u>SPECIAL EDUCATION</u>
ATLANTIC	BUENA REGIONAL	BUENA REGIONAL MIDDLE SCHOOL	01-0590-030	06-08	59%	0.2%	22.7%
ATLANTIC	GALLOWAY TWP	GALLOWAY TOWNSHIP MIDDLE SCHOOL	01-1690-016	07-08	53.3%	1%	17.1%
ATLANTIC	MULLICA TWP	MULLICA TOWNSHIP MIDDLE SCHOOL	01-3480-025	05-08	46.1%	0%	18.2%
ATLANTIC	WEYMOUTH TWP	WEYMOUTH TOWNSHIP ELEMENTARY SCHOOL	01-5760-020	PK-08	50.3%	0%	22.1%
BERGEN	TEANECK TWP	BENJAMIN FRANKLIN MIDDLE SCHOOL	03-5150-060	05-08	36%	0.4%	27.5%
BURLINGTON	BEVERLY CITY	BEVERLY CITY SCHOOL	05-0380-025	PK-08	67%	2.4%	17.9%
BURLINGTON	RIVERSIDE TWP	RIVERSIDE MIDDLE SCHOOL	05-4450-070	06-08	54.2%	1.8%	18.7%
BURLINGTON	WILLINGBORO TWP	WILLINGBORO MEMORIAL MIDDLE SCHOOL	05-5805-057	06-08	60.7%	0.6%	19.9%
CAMDEN	BERLIN TWP	DWIGHT D EISENHOWER MIDDLE SCHOOL	07-0340-030	04-08	38.2%	1.7%	25.3%
CAMDEN	BROOKLAWN BORO	ALICE COSTELLO ELEMENTARY SCHOOL	07-0580-010	PK-08	57.5%	0%	14.6%
CAMDEN	CLEMENTON BORO	CLEMENTON ELEMENTARY SCHOOL	07-0880-010	PK-08	62.7%	1.8%	16.2%
CAMDEN	GLOUCESTER TWP	CHARLES W. LEWIS MIDDLE SCHOOL	07-1780-035	06-08	56.4%	2.8%	22.6%
CAMDEN	WINSLOW TWP	WINSLOW TOWNSHIP MIDDLE SCHOOL	07-5820-020	07-08	57.6%	0.3%	20.6%
CAPE MAY	LOWER CAPE MAY REGIONAL	RICHARD M. TEITELMAN MIDDLE SCHOOL	09-2820-060	07-08	53.6%	0.6%	23.5%
CAPE MAY	MIDDLE TWP	MIDDLE TOWNSHIP ELEMENTARY #4	09-3130-091	06-08	41%	0.4%	24.2%
CAPE MAY	WOODBINE BORO	WOODBINE ELEMENTARY SCHOOL	09-5840-050	PK-08	44.8%	1.1%	25%
CUMBERLAND	VINELAND CITY	ANTHONY ROSSI MIDDLE SCHOOL	11-5390-065	06-08	51.3%	2.5%	21.9%
GLOUCESTER	CLAYTON BORO	CLAYTON MIDDLE SCHOOL	15-0860-045	06-08	56.4%	2.3%	18.1%
GLOUCESTER	WEST DEPTFORD TWP	WEST DEPTFORD MIDDLE SCHOOL	15-5620-130	05-08	31.5%	0.5%	26.3%
HUDSON	BAYONNE CITY	HENRY E. HARRIS #1	17-0220-050	PK-08	59.1%	0%	16.3%
HUDSON	BAYONNE CITY	JOHN M. BAILEY #12	17-0220-040	PK-08	65.5%	0%	14.6%

SCHOOL PEER GROUP

ALICE COSTELLO ELEMENTARY SCHOOL
301 HAAKON RD.
BROOKLAWN, NJ 08030

CAMDEN
BROOKLAWN BORO

GRADE SPAN PK-08

HUDSON	BAYONNE CITY	LINCOLN COMMUNITY SCHOOL #5	17-0220-070	PK-08	62.1%	0%	15.9%
HUDSON	BAYONNE CITY	WASHINGTON COMMUNITY SCHOOL #9	17-0220-120	PK-08	62.1%	0.4%	22.4%
HUDSON	BAYONNE CITY	WOODROW WILSON #10	17-0220-130	PK-08	66.5%	0%	11.3%
MERCER	EWING TWP	GILMORE J FISHER MIDDLE	21-1430-060	06-08	48.7%	2%	21%
MONMOUTH	EATONTOWN BORO	MEMORIAL MIDDLE SCHOOL	25-1260-070	07-08	48.2%	0.9%	20.8%
MONMOUTH	NEPTUNE TWP	NEPTUNE MIDDLE SCHOOL	25-3510-055	06-08	64%	1.7%	21.8%
OCEAN	CENTRAL REGIONAL	CENTRAL REGIONAL MIDDLE SCHOOL	29-0770-050	07-08	37.5%	0.4%	22%
OCEAN	LAKEHURST BORO	LAKEHURST ELEMENTARY SCHOOL	29-2500-050	PK-08	54.7%	1.8%	20%
OCEAN	PINELANDS REGIONAL	PINELANDS REGIONAL JUNIOR HIGH SCHOOL	29-4105-060	07-09	41.9%	0.8%	21.1%
UNION	RAHWAY CITY	RAHWAY 7TH & 8TH GRADE ACADEMY	39-4290-060	07-08	61.4%	3.3%	19.4%