



USDA,
National Agricultural Statistics Service,
New Jersey Field Office
P.O. Box 330
Trenton, NJ 08625
Phone: 1(800)328-0179
Fax: 1(800)625-7581
www.nass.usda.gov/nj/

New Jersey's FARM FACTS

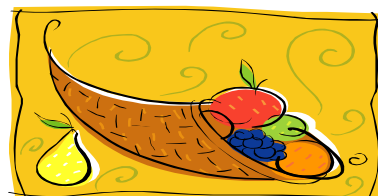
"Fact Finders for Agriculture"

Volume: 06 Number: 05

May 19, 2006

New Jersey Spring Vegetables: The 2006 growing seasons started slightly behind schedule due to cold conditions in early spring. Cool temperatures also slowed crop development. The prospective area for harvest of selected fresh market vegetables (cabbage and snap beans) is forecast at 2,800 acres during the spring quarter, up 200 acres from last year. Prospective planting acres for processing vegetables (snap beans, green peas, sweet corn, and tomatoes) are 5,200 acres compared with 5,500 acres last year, down 300 acres. The contracted acres were not published separately to avoid disclosing individual operations.

United States Processed Vegetable Contracted: Processors expect to contract 1.22 million acres of the 5 major processed vegetable crops in the U.S. this year, virtually unchanged from last year. Contracted acreage decreases are forecast for snap beans and sweet corn, while cucumbers for pickles, green peas, and tomatoes show increases.



New Jersey Spring Vegetables - Selected Crops

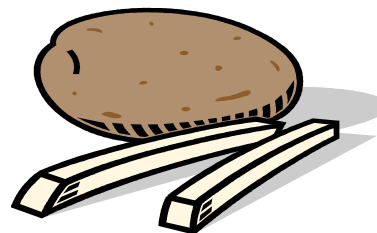
Crop	Harvested		Planted for Harvest
	2004	2005	2006
<i>Acres</i>			
Cabbage	1,000	1,000	1,200
Snap Beans	1,500	1,600	1,600

New Jersey 2005 Summer Potatoes Revisions: The final estimate of 2005 summer potato crop production is 536,000 cwt, down 10 percent from the previous year. Harvested area covered 2,100 acres, down 100 acres from 2004. The average yield of 255 cwt per acre is down 15 cwt from the 2004 yield of 270 cwt.



United States Spring Fresh Market Vegetables: The prospective area for harvest of 11 selected fresh market vegetables during the spring quarter is forecast at 206,900 acres, down 1 percent from last year for comparable States. Acreage decreases for snap beans, broccoli, cauliflower, head lettuce, bell peppers, and tomatoes more than offset acreage increases for cabbage, carrots, celery, and sweet corn. Melon acreage for spring harvest is forecast at 78,200 acres, up 6 percent from last year. Watermelon acreage is up 4 percent from 2005 while cantaloupe acreage increased 10 percent from a year ago. Honeydew melon acreage remains unchanged. Asparagus acreage for spring harvest is forecast at 45,500 acres, down 16 percent from last year. Strawberry acreage for harvest is forecast at 45,200 acres, up 3 percent for comparable States in 2005.

United States 2005 Summer Potato Revisions: The final estimate of 2005 summer potato crop production is 17.6 million cwt, up 8 percent from the preliminary estimate in the January Crop Production 2005 Summary but down 4 percent from the 2004 crop. Harvested area covered 51,400 acres, up 6 percent from the 2005 preliminary estimate but down 5 percent from 2004. The average yield of 342 cwt per acre is up 8 cwt from the 2005 preliminary estimate and 2 cwt above the 2004 crop.



New Jersey Quarterly Milk Production: The January-March 2006 Quarterly Milk Production for New Jersey was 48 million pounds, down 2 percent from the January-March period last year.

United States Quarterly Milk Production: Milk production in the U.S. during the January-March 2006 quarter totaled 45.5 billion pounds, up 5.0 percent from the January-March quarter last year.

The average number of milk cows during the January-March 2006 quarter was 12,000 head, unchanged from the January-March 2005 quarter.

The average number of milk cows in the United States during the January-March 2006 quarter was 9.09 million head, up 91,000 head from the same period last year.

Milk Cows and Production: By Selected States and the United States, Preliminary January-March, 2005-2006

State	January-March Milk Cows 1/		January-March Milk Production 2/		Change From 2005
	2005	2006	2005	2006	
	1,000 Head		Million Pounds		Percent
Delaware	7.5	7.2	34.0	33.1	-2.6
Maryland	73	70	299	292	-2.3
New Jersey	12	12	49	48	-2.0
New York	649	650	2,935	3,060	4.3
Pennsylvania	561	556	2,560	2,723	6.4
United States	9,002	9,093	43,350	45,521	5.0

1/ Includes dry cows, excludes heifers not yet fresh.

2/ Excludes milk sucked by calves.

New Jersey Egg and Turkey Production, Price, and Value

New Jersey produced 495 million eggs in 2005 compared to 558 million produced the previous year. The value of 2005 egg production was \$20.4 million, down 30 percent from \$28.9 million produced in 2004.

New Jersey producers raised 37,000 turkeys in 2005, unchanged from turkeys raised in 2004. The value of turkeys raised was \$678,000, down 4 percent from \$708,000 generated from turkey sales in 2004.

Egg Production, Price, and Value: Selected States and United States, 2004-2005 1/ 2/

State	Egg Production		Price Per Dozen		Value of Production	
	2004	2005	2004	2005	2004	2005
	Million		Dollars		1,000 Dollars	
Maryland	843	798	0.651	0.467	45,737	31,069
New Jersey	558	495	0.622	0.494	28,912	20,373
New York	1,163	1,190	0.617	0.368	59,844	36,461
Pennsylvania	6,585	6,608	0.619	0.389	339,744	214,188
United States	89,091	89,960	0.714	0.539	5,299,185	4,042,282

1/ Estimates cover the 12 month period Dec 1, previous year through Nov 30.

2/ Includes hatching and market (table) eggs.

Turkey Production, Price, and Value: Selected States and United States, 2004-2005

State	Number Raised 1/		Pounds Produced		Price Per Pound 2/		Value of Production	
	2004	2005	2004	2005	2004	2005	2004	2005
	1,000 Head		1,000 Pounds		Dollars		1,000 Dollars	
Maryland	750	800	13,275	15,360	0.430	0.470	5,708	7,219
New Jersey	37	37	814	570	0.870	1.19	708	678
New York	580	620	13,746	14,012	0.430	0.460	5,911	6,446
Pennsylvania	12,000	11,500	234,000	226,550	0.480	0.490	112,320	111,010
United States	264,207	256,270	7,304,813	7,206,560	0.420	0.449	3,065,417	3,232,576

1/ Based on turkeys placed the 12 month period September 1, previous year through August 31, current year. Excludes turkeys lost.

2/ Maryland, New Jersey and Pennsylvania prices are actual live weight prices. Pennsylvania prices are equivalent live weight returns to producers.

New Jersey and United States Cattle and Calves: Inventory, Supply, and Disposition, 2005 1/

State	Inventory Jan 1, 2005	Calf Crop	Inshipments	Marketings 2/		Farm Slaughter 3/	Deaths		Inventory Jan 1, 2006
				Cattle	Calves	Cattle & Calves	Cattle	Calves	
1,000 Head									
NJ	44.0	14.0	0.5	6.2	7.8	0.5	1.0	1.0	42.0
US	95,438.0	37,780.1	20,841.2	43,798.0	8,918.3	189.3	1,717.7	2,334.5	97,101.5

1/ Balance sheet estimates by state; the sum of inventory January 1, 2005, calf crop, and inshipments is equal to the sum of marketings, farm slaughter, deaths, and inventory January 1, 2006.

2/ Includes custom slaughter for use on farms where produced and state outshipments, but excludes interfarm sales within the state.

3/ Excludes custom slaughter for farmers at commercial establishments.

New Jersey and United States Cattle and Calves: Inventory, Supply, and Disposition, 2004, Revised 1/

State	Inventory Jan 1, 2004	Calf Crop	Inshipments	Marketings 2/		Farm Slaughter 3/	Deaths		Inventory Jan 1, 2005
				Cattle	Calves	Cattle & Calves	Cattle	Calves	
1,000 Head									
NJ	46.0	16.0	0.5	7.1	8.9	0.5	1.0	1.0	44.0
US	94,888.0	37,505.4	21,398.7	45,049.2	9,116.3	185.4	1,710.8	2,292.4	95,438.0

1/ Balance sheet estimates by state; the sum of inventory January 1, 2004, calf crop, and inshipments is equal to the sum of marketings, farm slaughter, deaths, and inventory January 1, 2005.

2/ Includes custom slaughter for use on farms where produced and state outshipments, but excludes interfarm sales within the state.

3/ Excludes custom slaughter for farmers at commercial establishments.

New Jersey and United States Hogs and Pigs: Inventory, Supply, and Disposition, 2005 1/

State	Inventory Dec 1, 2004	Pig Crop	Inshipments	Marketings 2/	Farm Slaughter 3/	Deaths	Inventory Dec 1, 2005
		Dec - Nov					
1,000 Head							
NJ	11.0	2.8	19.0	22.4	1.0	0.4	9.0
US	60,974.5	103,858.1	33,416.2	129,056.0	108.6	7,757.4	61,326.9

1/ Balance sheet estimates by state; the sum of inventory December 1, 2004, pig crop, and inshipments is equal to the sum of marketings, farm slaughter, deaths, and inventory December 1, 2005.

2/ Includes custom slaughter for use on farms where produced and state outshipments, but excludes interfarm sales within the state.

3/ Excludes custom slaughter for farmers at commercial establishments.

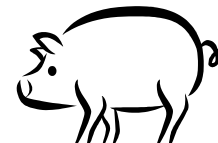
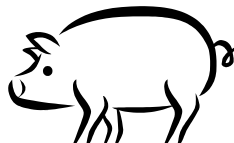
New Jersey and United States Hogs and Pigs: Inventory, Supply, and Disposition, 2004 , Revised 1/

State	Inventory Dec 1, 2003	Pig Crop	Inshipments	Marketings 2/	Farm Slaughter 3/	Deaths	Inventory Dec 1, 2004
		Dec - Nov					
1,000 Head							
NJ	12.0	7.7	19.0	26.3	1.0	0.4	11.0
US	60,443.7	102,780.5	32,888.4	127,562.9	113.7	7,461.7	60,974.5

1/ Balance sheet estimates by state; the sum of inventory December 1, 2003, pig crop, and inshipments is equal to the sum of marketings, farm slaughter, deaths, and inventory December 1, 2004.

2/ Includes custom slaughter for use on farms where produced and state outshipments, but excludes interfarm sales within the state.

3/ Excludes custom slaughter for farmers at commercial establishments.



April Farm Prices Received Index Up 0.9 Percent From Last Month

The preliminary All Farm Products Index of Prices Received by Farmers in April 2006, at 115, based on 1990-92=100, is 0.9 percent above the March Index. The Crop Index is up 9.3 percent but the Livestock Index decreased 5.5 percent. Producers received higher commodity prices for lettuce, tomatoes, onions and strawberries. Lower prices were received for broilers, cattle, eggs and hogs. The seasonal change in the mix of commodities farmers sell, based on the past 3-year average, also affects the overall index. Increased average marketings of cattle, strawberries, sweet corn and oranges offset decreased marketings of soybeans, corn, wheat and hogs.

This preliminary All Farm Products Index is down 5.0 percent from April 2005. The Food Commodities Index, at 117, is 0.9 percent above last month but down 6.4 percent from April 2005.

Prices Paid Index Up

The April Index of Prices Paid for Commodities and Services, Interest, Taxes, and Farm Wage Rates (PPITW) is 147 percent of the 1990-92 average. The index is up 0.7 percent from March 2006 and 5.0 percent above April 2005. Higher prices in April 2006 for field crop seed, feeder cattle, hay & forages, feeder cattle, legume & grass seed and feed grains more than offset lower prices for feeder pigs, milk cows, insecticides, diesel fuel and trucks.

Average Prices Received by Farmers: United States

Item	Entire Month		Preliminary
	Apr 2005	Mar 2006	Apr 2006
-- Dollars --			
Field Crops			
Barley, per bushel	2.26	2.71	2.67
Corn, per bushel	2.00	2.06	2.11
Hay, all, baled, per ton ^{1/}	99.40	97.10	106.00
Soybeans, per bushel	6.03	5.57	5.39
Fruit, fresh			
Apples, per lb ^{2/}	.173	.256	.247
Strawberries, per cwt	44.70	71.70	82.60
Vegetables, fresh			
Corn, Sweet, per cwt	21.50	33.70	38.90
Lettuce, per cwt	30.10	19.10	24.90
Tomatoes, per cwt	65.10	31.50	43.50
Livestock and Livestock Products			
Beef Cattle, per cwt	93.70	88.10	85.20
Steers and Heifers, per cwt	98.10	93.00	89.70
Cows, per cwt ^{3/}	57.00	49.50	48.70
Calves, per cwt	141.00	138.00	136.00
Broilers, live, per lb ^{4/}	.440	.370	.340
Eggs, all, per dozen ^{1/}	.474	.670	.512
Milk, all, per cwt ^{5/ 6/}	15.20	12.60	12.10

^{1/} Mid-month price.

^{2/} Equivalent packinghouse-door returns for CA, MI, and NY (apples only), and WA (apples, peaches, and pears). Prices as sold for other states.

^{3/} Beef cows and cull dairy cows sold for slaughter.

^{4/} Equivalent liveweight returns to producers for most states. Includes growers and contractors.

^{5/} Before deductions for hauling. Includes quality, quantity, and other premiums. Excludes hauling subsidies.

^{6/} April 2006 fat test percent: all milk 3.68, fluid milk 3.67 and mfg grade 3.96.



To obtain other agricultural statistics, visit the New Jersey Field Office at www.nass.usda.gov/nj/ or call 1-800-328-0179.