

F O R R E L E A S E : A F T E R N O O N N E W S P A P E R S - O N D E C E M B E R 1 9 , 1 9 6 2

## **TRI-STATE TRANSPORTATION COMMITTEE**

CONNECTICUT • NEW JERSEY • NEW YORK

100 CHURCH STREET, NEW YORK 7, N. Y.

TELEPHONE WO 4-2002

December 19, 1962

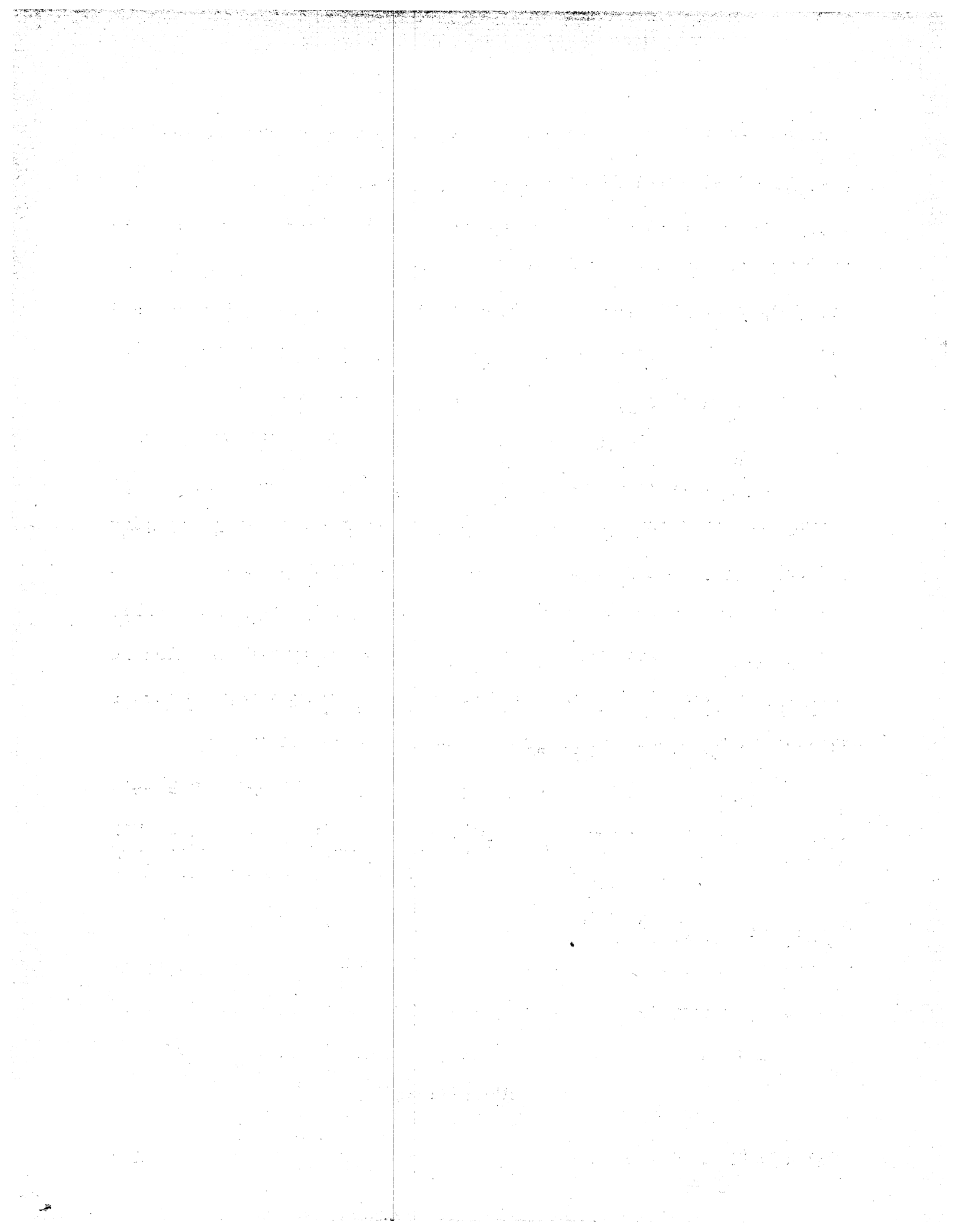
Hon. John Dempsey, Governor of Connecticut  
Hon. Richard J. Hughes, Governor of New Jersey  
Hon. Nelson A. Rockefeller, Governor of New York

Your Excellencies:

The Tri-State Transportation Committee submits herewith a report on the Status of Regional Highways, together with a map prepared by the Committee. This report sets forth, for the first time, the collective current status and progress of the highway programs of Connecticut, New Jersey and New York in the Tri-State Region. The report has been compiled by the Committee from data supplied by the highway departments of the three States, in cooperation with the U.S. Bureau of Public Roads.

In accordance with the Governors' directive of August 1961 creating the Tri-State Transportation Committee, the report and map will be given wide distribution to the many governmental agencies and others concerned with transportation and planning so that the material can be used in their respective programs.

The report lists and describes the major freeways, expressways and parkways completed in recent years; those under



construction and planned for the near future; and those which have been proposed but are still under study. Routes which extend outside the Tri-State Region are described for their entire length.

The portions of highways described in this report represent a total of 2,500 route-miles and 12,500 "lane-miles" within the Tri-State Region. Forty-eight per cent of this regional highway network or 1,211 route-miles were completed by November 1, 1962. Another 222 miles of routes are now under construction. As presently programmed, the highway network in the Tri-State Region will represent an over-all investment of \$4.5 billion between 1957 and 1970.

Within the Tri-State Region, the main highway network in each of the States includes: 355 miles of major highways in Connecticut, of which 187 are completed and 26 are under construction; 995 miles in New Jersey, of which 406 are completed and 91 under construction; 1,175 miles in New York State, of which 618 are completed and 105 under construction.

The Status Report is part of the Committee's immediate-action Regional Highway Systems Study. The full study will include a detailed inventory of the existing and presently planned arterial highway networks of the Tri-State Region and an evaluation



of their present and future adequacy. In addition, there will be an investigation of the urgent future highway needs to assure that the system will accommodate the area's traffic for the period through 1970. Recommendations for possible revisions, schedule changes and additional routes required will also be included in the study. The full study will be completed by August 1963.

As indicated in the Committee's Prospectus of April 30, 1962, the Committee is also undertaking, in collaboration with the respective States, a series of studies to determine the means for achieving improved mass transportation services in the Region. As part of these studies, we will examine the relationship between mass transportation and highway facilities and the effects which various factors have had on railroad and highway usage.

The results of these studies will be submitted to you as part of the Committee's continuing responsibility for examining the immediate and long-range transportation problems of the Region and for developing solutions to meet these problems.

Respectfully submitted,

Tri-State Transportation  
Committee



William J. Ronan, Secretary to the Governor of New York, Chairman  
of the Committee

J. Burch McMorran, New York State Superintendent of Public Works

Arne C. Wiprud, Director of Office of Transportation, State of  
New York

George A. Dudley, Director of Office for Regional Development  
State of New York

Dwight R. G. Palmer, New Jersey Commissioner of Highways

Otto H. Fritzsche, State Highway Engineer, New Jersey

Herbert A. Thomas, Jr., Director, Division of Railroad Transporta-  
tion, State of New Jersey

H. Mat Adams, Commissioner of Conservation and Economic Development,  
State of New Jersey

Carl Lalumia, Executive Aide to the Governor of Connecticut

Howard S. Ives, Connecticut Commissioner of Highways

Eugene S. Loughlin, Chairman, Public Utilities Commission of  
Connecticut

Graham R. Treadway, Chairman, Connecticut Development Commission

James Felt, Chairman, New York City Planning Commission

John A. Swanson, Regional Engineer, U.S. Bureau of Public Roads

John C. Kohl, Assistant Administrator for Urban Transportation,  
Housing and Home Finance Agency

Lester Eisner, Jr., Regional Administrator, Housing and Home  
Finance Agency

Frank E. Loy, Acting Director, Office of Policy Development,  
Federal Aviation Agency

Roger H. Gilman, Executive Director

