

Prepared 4/07

\$25.00 per issue

THE NEW JERSEY
CONSTRUCTION
REPORTER

2006 Annual Report

NEW JERSEY DEPARTMENT OF
COMMUNITY AFFAIRS



New Jersey Department of Community Affairs
Division of Codes and Standards
101 South Broad Street
Post Office Box 802
Trenton, New Jersey 08625-0802

(609) 292-7898

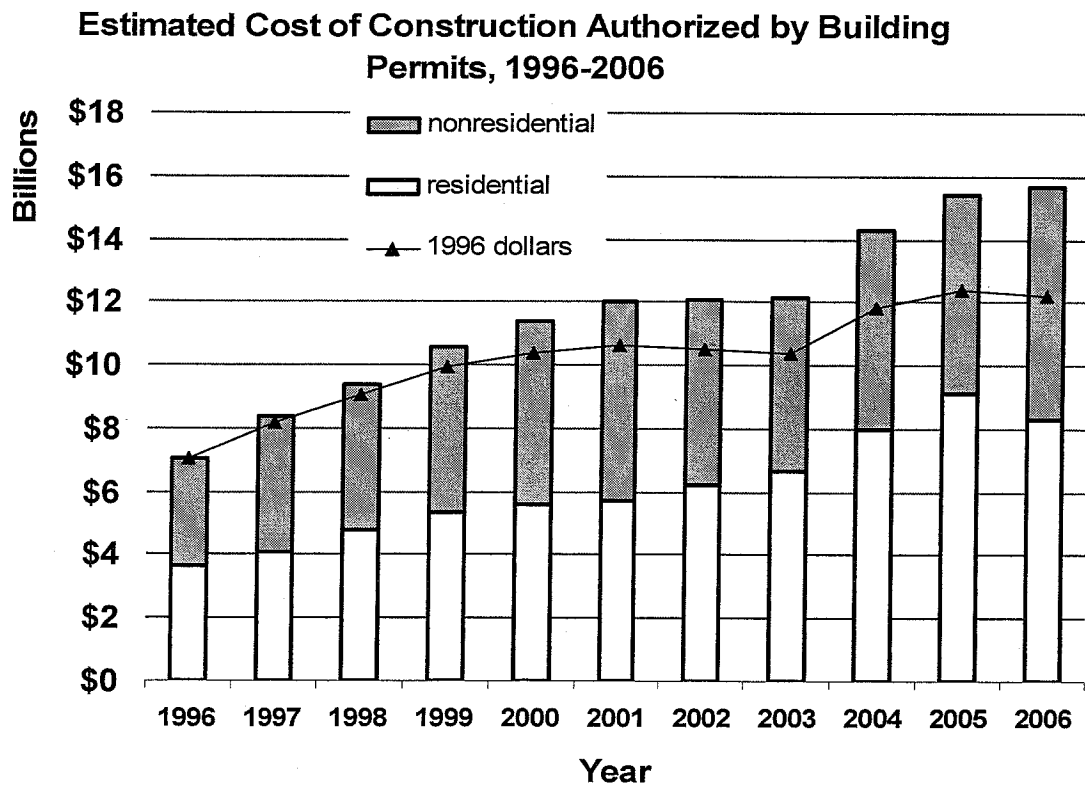
www.nj.gov/dca/codes/cr/conrep.shtml

TABLE OF CONTENTS

Contents	Description	Pages
INTRODUCTION		
Highlights	Analysis of year-to-date data for 2003	i - x
Foreword	Background information	1
Exhibits A - C	Definition of terms used throughout the tables	2 - 4
RESIDENTIAL CONSTRUCTION		
Tables 1 - 6	Housing units authorized and certified, housing units demolished, year-to-date figures	5 - 15
OFFICE SPACE		
Tables 7 - 8	Square feet of office space authorized and certified, year-to-date figures	16 - 19
RETAIL SPACE		
Tables 9 - 10	Square feet of retail space authorized and certified, year-to-date figures	20 - 23
DOLLAR AMOUNTS		
Tables 11 - 13	Dollar amount of construction authorized by county and top municipalities, year to date; dollar amount of construction authorized by use group and permit type, New Jersey totals, year to date	24 - 28
NEW HOUSE PRICES		
Tables 14a - e	Average sales price of new houses under warranty by county for 1998	29 - 33
MUNICIPAL SUMMARY DATA		
	Housing units authorized and certified, office and retail space authorized, and dollar amount of construction authorized by municipality, year-to-date totals	MSD-1 - MSD-16
ILLUSTRATIONS		
Map 1	Housing units authorized by municipality	8
Map 2	Office space authorized by municipality	18
Map 3	Retail space authorized by municipality	22
Map 4	Estimated cost of construction authorized by municipality	26

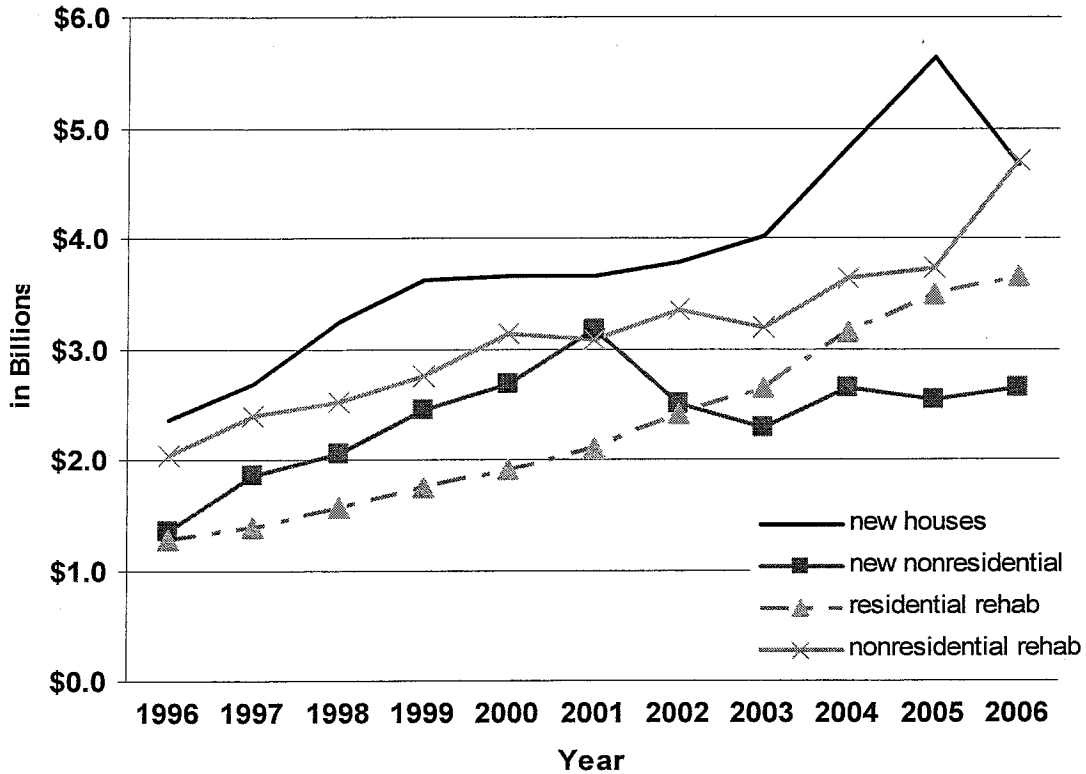
2006 HIGHLIGHTS

- Construction officials issued building permits for \$15.675 billion in 2006. This was \$277.6 million (1.8 percent) more than in 2005, which was a record high. In constant dollars, the amount of work in 2006 was 1.4 percent below 2005, based on an inflation rate of 3.2 percent.
- Residential construction was \$8.32 billion -- 53.1 percent of all activity. Office, retail, and other nonresidential work totaled \$7.354 billion -- 46.9 percent.



- While activity was about the same as in 2005, there was substantial change within the construction industry. Though still a major player, new home construction declined by nearly \$1 billion in 2006; this was 17.3 percent below the 2005 level. New commercial construction grew by \$110 million (4.3 percent) compared to 2005. Significant growth occurred in tenant fit-ups, and other additions and alterations to existing commercial buildings. Nonresidential additions and alterations increased by \$973.8 million, or 26.1 percent, compared to 2005. So, even though the dollar amount of all work was about the same in 2006, there were significant shifts in the types of construction.

Estimated Cost of Construction Authorized by Building Permits



- Authorized housing totaled 32,050 units; this was 7,638 dwellings less than in 2005, a decline of 19.2 percent.
- The amount of new office space was about the same as in 2005: 11.1 million square feet.
- New retail space declined by about 13.1 percent in 2006.

New Jersey Construction Indicators				
	Estimated Construction Costs	Authorized Housing Units	Authorized Office Space (square feet)	Authorized Retail Space (square feet)
1996	\$7,028,424,990	27,577	6,229,515	4,880,139
1997	\$8,346,533,144	30,017	10,409,171	5,688,955
1998	\$9,396,755,517	35,676	12,703,824	7,921,892
1999	\$10,584,167,530	37,536	13,237,891	6,229,471
2000	\$11,387,683,514	38,065	15,531,039	6,063,412
2001	\$12,007,456,630	35,680	19,134,533	7,244,833
2002	\$12,079,942,099	34,589	9,261,054	7,560,913
2003	\$12,148,747,807	35,171	9,744,146	6,038,428
2004	\$14,274,331,850	39,254	12,219,068	4,911,257
2005	\$15,397,507,147	39,688	11,038,132	5,965,258
2006	\$15,675,107,955	32,050	11,113,555	5,186,662
<i>Change between 2005 and 2006</i>				
2005-2006	\$277,600,808	-7,638	75,423	-778,596
Percent Change	1.8%	-19.2%	0.7%	-13.1%
Source: N.J. Department of Community Affairs, 4/9/07				

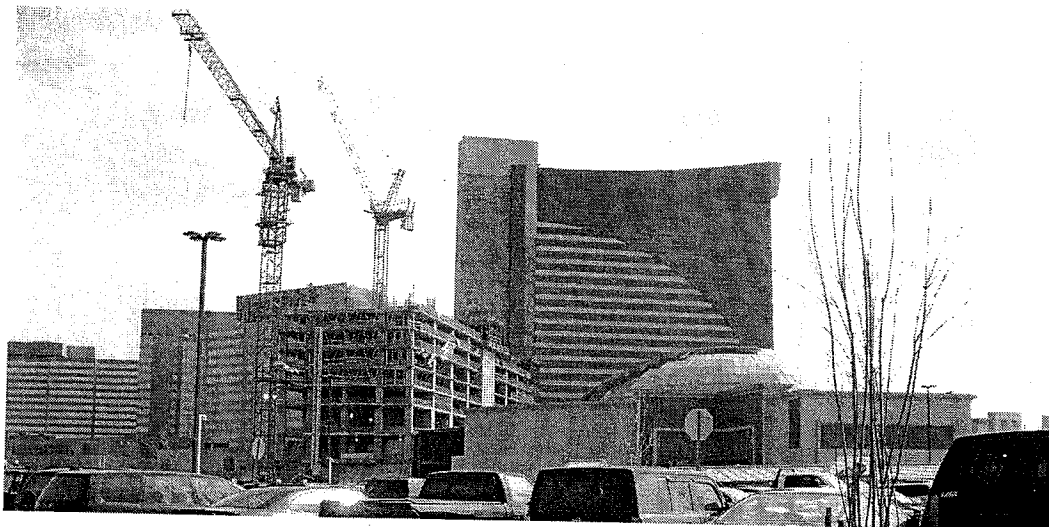
- Northern New Jersey accounted for nearly \$7 billion of construction -- 44.6 percent. A total of 14,346 dwellings were authorized in northern communities, 44.8 percent of the 32,050 dwellings statewide.
- Central New Jersey had nearly \$5 billion of construction (31.7 percent of all work) and accounted for 9,229 new dwellings -- 28.8 percent of all the new homes authorized in the State. The central part of the State had 4.4 million square feet of new office space, or 39.3 percent of all new office space in 2006.
- Southern New Jersey had \$3.4 billion of construction (21.4 percent of all reported work). A total of 8,473 new houses were authorized -- 26.4 percent of all new houses statewide. The southern part of the State had the most new retail space in 2006: 1.7 million square feet. In comparison, northern New Jersey had 1.1 million square feet.

Major Construction Indicators by Region				
Region	Estimated Cost of Construction	Authorized Housing Units	Authorized Office Space (square feet)	Authorized Retail Space (square feet)
North	\$6,988,637,770	14,346	4,303,558	1,128,090
Central	4,968,569,574	9,229	4,368,419	1,430,732
South	3,361,170,130	8,473	1,903,708	1,693,367
State Buildings	356,780,481	2	537,870	934,473*
New Jersey	\$15,675,107,955	32,050	11,113,555	5,186,662
<i>Percent Distribution by Region</i>				
North	44.6%	44.8%	38.7%	21.7%
Central	31.7%	28.8%	39.3%	27.6%
South	21.4%	26.4%	17.1%	32.6%
State Buildings	2.3%	0.006%	4.8%	18.0%
New Jersey	100.0%	100.0%	100.0%	100.0%
Source: N.J. Department of Community Affairs, 4/9/07				
Northern New Jersey: Bergen, Essex, Hudson, Morris, Passaic, Sussex, Union, and Warren Counties				
Central New Jersey: Hunterdon, Mercer, Middlesex, Monmouth, Ocean, and Somerset Counties				
Southern New Jersey: Atlantic, Burlington, Camden, Cape May, Cumberland, Gloucester, and Salem Counties				
*Includes the Meadowlands Xanadu entertainment and sports complex in East Rutherford Borough, Bergen County.				

- For over five years, much of the construction in New Jersey cities was in the big cities. This trend continued in 2006. Atlantic City in Atlantic County led all localities with \$614.9 million. Three large casino expansions accounted for much of this work: Harrah's Bayview Tower (975,000 square feet); the Borgata Hotel Casino and Spa expansion (841,000 square feet); and the Trump Taj Mahal expansion (725,000 square feet).



Trump Taj Mahal expansion in Atlantic City. Photographed by Robert Brock, Department of Community Affairs.

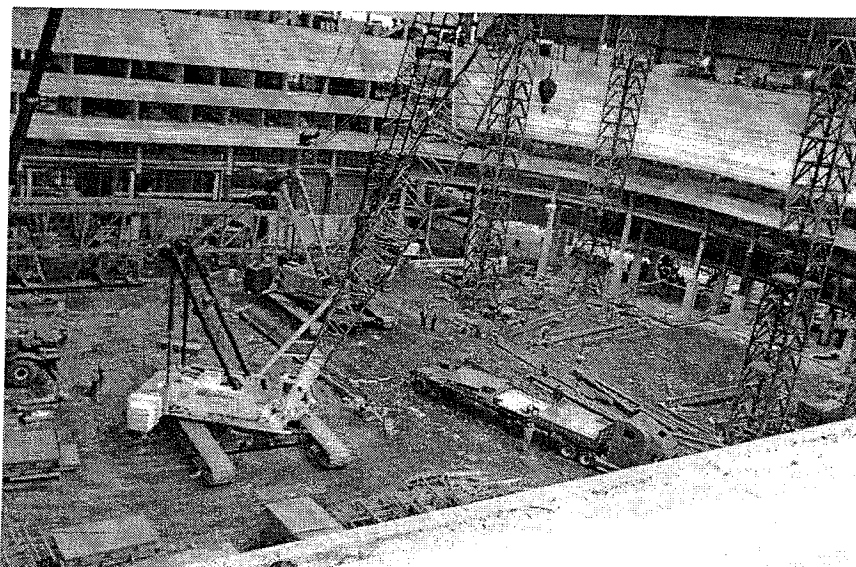


Harrah's expansion in Atlantic City. Photographed by Robert Brock, Department of Community Affairs.



Borgata expansion in Atlantic City. Photographed by Robert Brock, Department of Community Affairs.

- The City of Newark in Essex County had \$421.1 million of construction, ranking second among municipalities. New houses accounted for 40 percent of the work reported. Newark had 2,125 authorized houses in 2006. Only Jersey City in Hudson County had more. Big commercial developments during the year included a new sports arena and renovation of an existing office building on Raymond Boulevard.



Newark's new sports arena. Photographed by Ganga Sivakumar, Department of Labor and Workforce Development.

- Jersey City had \$370.2 million of work. More than 61 percent of all authorized work was either to build new dwellings or fix up existing ones. The City had 2,578 new houses authorized for construction in 2006, top among municipalities.

Authorized Housing in Newark and Jersey City, 2001-2006					
Year	Newark		Jersey City		All New Jersey
	Authorized Units	Rank	Authorized Units	Rank	Authorized Units
2001	1,066	2	2,009	1	35,680
2002	1,223	1	907	2	34,589
2003	1,730	1	969	2	35,171
2004	1,702	2	2,156	1	39,254
2005	2,611	2	3,778	1	39,688
2006	2,125	2	2,578	1	31,709

Source: N.J. Department of Community Affairs, 4/9/07

- For six years, Newark or Jersey City have ranked either first or second with the most new houses. Since 2001, New Jersey communities had a total of 216,432 authorized dwellings. Newark and Jersey City accounted for 22,854. Better than one in ten new houses were in these two cities.

Construction Indicators Top New Jersey Municipalities					
Municipality	County	Estimated Cost of Construction (dollars)	Authorized Housing Units	Authorized Office Space (square feet)	Authorized Retail Space (square feet)
Atlantic City	Atlantic	\$614,900,010	281	6,130	140,488
Newark City	Essex	421,116,901	2,125	102,215	9,241
Jersey City	Hudson	370,156,372	2,578	32,151	239,486
Woodbridge Township	Middlesex	226,944,804	48	11,965	28,160
Hoboken City	Hudson	225,012,224	995	27,480	0
Paramus Borough	Bergen	184,992,410	42	96,048	65,377
Camden City	Camden	161,339,497	270	105,000	1,525
Toms River Township	Ocean	155,546,121	254	230,770	14,800
West New York	Hudson	141,261,773	406	286	0
East Brunswick	Middlesex	137,340,651	23	0	0
Top Municipalities		2,638,610,763	7,022	612,045	499,077
New Jersey		\$15,675,107,955	32,050	11,113,555	5,186,662
Top as Percent of New Jersey		16.8%	21.9%	5.5%	9.6%

Source: N.J. Department of Community Affairs, 4/9/07

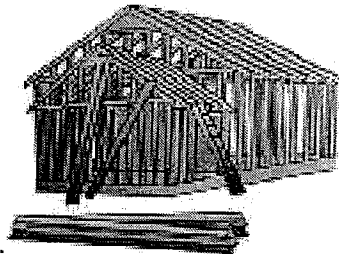
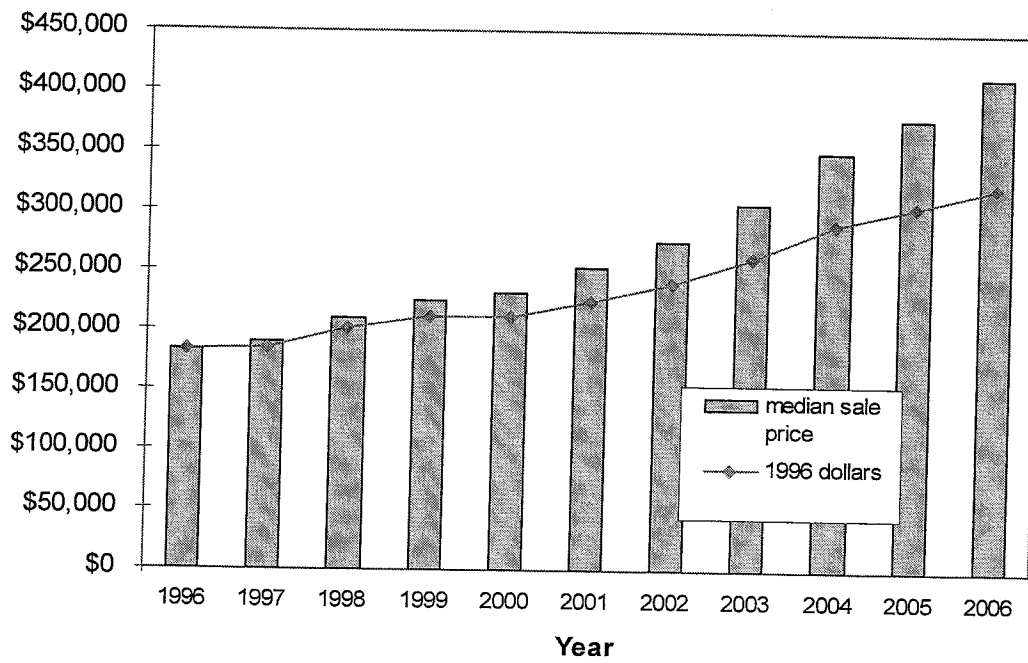
- Woodbridge Township in Middlesex County had \$226.9 million of construction. Most of this was for a regional wastewater treatment plant. Another large project reported this year was for an addition to a high school.
- The City of Hoboken in Hudson County had \$225 million of construction. Over 92¢ of every dollar of work was either to build new, or renovate existing, dwellings. Hoboken had 995 authorized dwellings in 2006, the third highest municipal total. One of the bigger housing developments this year was new condominiums on the site of the old Maxwell House Coffee factory.
- Paramus Borough in Bergen County had \$185 million of construction in 2006. Two major school expansions and additions to the Westfield Garden State Plaza shopping mall were among the larger projects reported.
- The City of Camden in Camden County had \$161.3 million of work in 2006 and much of this was for renovation of the Cooper University Hospital. Camden also had 270 new dwellings.
- The dollar amount of construction authorized for "State Buildings" was \$356.7 million. The category State Buildings refers to building permits issued on behalf of State government agencies or instrumentalities of the State like the New Jersey Economic Development Authority, New Jersey Transit, or State universities. Some of the larger State buildings reported in 2006 were renovation and expansion of the Liberty Science Center in Jersey City; new campus buildings at Montclair State University and Kean University; the Greystone Park Psychiatric Hospital in Parsippany-Troy Hills Township, Morris County; and the Preakness Healthcare Center in Wayne Township, Passaic County.

New House Prices			
Period	Number of New Houses	Median Sale Price	Percent Change in Sale Price
1996	20,903	\$183,300	
1997	21,640	\$190,000	3.7%
1998	23,884	\$209,980	10.5%
1999	24,479	\$224,496	6.9%
2000	25,058	\$231,728	3.2%
2001	23,372	\$253,670	9.5%
2002	23,647	\$274,705	8.3%
2003	22,226	\$307,168	11.8%
2004	23,844	\$349,900	13.9%
2005	24,571	\$378,992	8.3%
2006	22,697	\$413,825	9.2%
1 st Quarter 2005	5,205	\$367,900	
2 nd Quarter 2005	6,564	\$379,954	3.3%
3 rd Quarter 2005	6,207	\$378,554	-0.4%
4 th Quarter 2005	6,595	\$387,709	2.4%
1 st Quarter 2006	5,220	\$409,365	5.6%
2 nd Quarter 2006	6,319	\$425,000	3.8%
3 rd Quarter 2006	6,207	\$405,150	-4.7%
4 th Quarter 2006	6,595	\$413,500	2.1%

Source: N.J. Department of Community Affairs, 4/9/07

- New home prices rose by 9.2 percent between 2005 and 2006. Half of the 22,697 new houses that started enrollment in a new home warranty program in 2006 cost more than \$413,825. The most expensive new homes were in Hunterdon, Morris, and Bergen Counties.

Median Sale Price of a New NJ House



THE NEW JERSEY CONSTRUCTION REPORTER contains statistics on construction activity in New Jersey. Information in the report comes from construction officials who administer the State Uniform Construction Code (UCC) (N.J.A.C. 5:23-1 et seq.) in New Jersey's 566 municipalities.

Each month, construction officials send to the New Jersey Department of Community Affairs (DCA) reports on the permits and certificates they issue. Permits authorize the start of construction and cover four types of activity: (1) New construction permits authorize the start of a new structure. (2) Permits for additions refer to work that will add space (volume and square feet) to an existing building. (3) Alterations also involve existing structures, but the work authorized will not add space. Typically, construction officials issue permits for alterations when the work is subject to one or more of the UCC's major subcodes (building, electrical, plumbing, fire protection). (4) Demolition permits authorize the removal of a building or some other structure. The *CONSTRUCTION REPORTER* identifies only those demolitions that will result in the loss of housing.

In addition to permits, the *CONSTRUCTION REPORTER* has information on the certificates issued by construction officials. While permits authorize the start of construction, certificates are issued for work completed and ready for occupancy. Each month, the *CONSTRUCTION REPORTER* will report on the number of housing units and the amount of office and retail space authorized for construction, along with the number of housing units and the amount of office and retail space completed.

Data Comparability

The *CONSTRUCTION REPORTER* contains information on authorized housing units that is tabulated two different ways. The DCA tabulates Tables 1 through 3 and Tables 8 through 13 based on the use of buildings, defined in "groups" by New Jersey's UCC. Exhibit B on page 3 summarizes these groups.

Tables 4, 5, and 6 show authorized housing units as defined and tabulated by the United States Census Bureau. The New Jersey Department of Labor and Workforce Development prepares these tables for publication in the *CONSTRUCTION REPORTER*. Exhibit C on page 4 describes the housing definitions used by the Census Bureau.

The DCA series and the Census Bureau series on authorized housing units differ two important ways. First, the DCA series includes housing units created as a result of permits issued to alter or make additions to existing structures. The Census Bureau counts only those housing units authorized from permits issued for new construction.

Second, the Census Bureau imputes data for localities that fail to submit monthly reports on time. An asterisk in the Census column of data appearing in the Municipal Summary Data table at the back of the *CONSTRUCTION REPORTER* indicates those towns with imputed data. The Census Bureau bases these imputations on historic trends. The DCA series shows information for only those towns that submitted monthly reports. If a municipality failed to submit a monthly report on time, "No report" appears in the appropriate columns in the Municipal Summary Data table.

Additional Terms

A number of other terms appear in the tables throughout the *CONSTRUCTION REPORTER*. Exhibit A on page 2 defines additional construction permit and certificate terms.

Exhibit A

Summary of Building Permit and Certificate Terms

Addition	Permit type issued for construction work that adds space (volume and square feet) to an existing structure.
Alteration	Permit type involving one or more subcodes (building, electrical, fire protection, plumbing). The work is authorized for an existing structure and does not add new space.
Certificate	A document issued by a construction official indicating completion of work for which a permit was issued.
Dollar Amount of Construction	Estimated cost of work, as reported by the permit applicant to the construction official.
Demolition	Permit type authorizing the demolition of an existing structure.
Housing Units Certified	A rental or for-sale unit completed and certified by the construction official for conforming to the standards in the New Jersey UCC.
Housing Units Authorized by Building Permits	A rental or for-sale dwelling unit authorized by a construction permit. See Exhibits B and C for explanations of the different definitions of housing structures. The Table 1 series and Tables 2 and 3 show housing units as classified by the residential use groups defined in Exhibit B. Tables 4, 5, and 6 identify authorized housing as defined by the U.S. Census Bureau. (See Exhibit C.)
Housing Unit Demolitions	Rental or for-sale housing to be demolished, as reported to the construction official by permit applicants.
New Construction	Permit type authorizing the start of a new structure.
Permit	A document issued by construction officials that authorizes the construction of a new structure or an addition, alteration, or demolition of an existing structure.
Square Feet	Estimated building area, as reported on permits for new construction and additions.
State Buildings	Buildings or structures constructed or owned by the State or any of its instrumentalities. Construction activity reported in this category includes State offices, colleges, hospitals, prisons, facilities operated by New Jersey Transit and the New Jersey Sports and Exposition Authority, and other State authorities.

Exhibit B

Buildings (Grouped by Use)	
Residential	Buildings where members of households live. Examples of residential groups include: one- and two-family houses (R-3 and R-5); apartments, townhouses, and other multifamily houses (R-2); and mixed-use housing, where the house is a relatively smaller part of a building that has another use (e.g., an apartment over a store). Therapeutic residences (R-4) for 6 to 16 occupants are also included in this category. The Table 1 series and Tables 2 and 3 show authorized housing units by group definition.

The following groups refer to industrial, commercial, and other nonresidential structures.	

Assembly	Structures where people gather for civic, social, or religious purposes. Examples include: theaters (group A-1); night clubs, dance halls, casino gaming areas, etc. (A-2); libraries, restaurants, lecture halls, art galleries (A-3); houses of worship (A-4); and grandstands, coliseums, stadiums, and amusement park structures (A-5).
Business	Office buildings (group B) for business transactions of all kinds including banks, corporate offices, professional offices, government buildings, beauty shops, motor vehicle showrooms, and out-patient clinics.
Educational	Buildings for educational purposes through the 12th grade (group E).
Hazardous Use	Buildings used to manufacture, process, or store materials that constitute a high fire, explosion, or health hazard (group H).
Hotels, Motels, Guest Houses	Buildings for shelter and sleeping where the primary occupants use the facility on a temporary basis, staying less than 30 days (group R-1).
Industrial	Factory buildings where the occupants make, process, or assemble products that are not highly combustible, flammable, or explosive. Includes automotive, appliance, and furniture manufacturers; electric power plants; food processing plants; foundries; and water pumping, solid waste disposal, and incineration plants (group F).
Institutional	Buildings for people who suffer from physical limitations because of age or health; buildings for people detained for penal or correction purposes. Includes: supervised residential homes for six or more people (group I-1); medical and nursing-care facilities (I-2); jails, reformatories, and asylums (I-3); and day care for six or more occupants (I-4).
Mercantile	Buildings for display and sale purposes. Includes retail stores, automotive service stations, shops, salesrooms, and markets (group M).
Storage	Buildings used to store goods that are not highly combustible or explosive. Includes warehouses, open parking structures, lumberyards, livestock shelters, and mausoleums (group S).
Signs, Fences, Miscellaneous	Accessory buildings and miscellaneous structures including fences over six feet in height, signs, private garages, sheds, agricultural buildings, carports, retaining walls, tanks, and swimming pools (group U).

Exhibit C

Residential Structures (U.S. Census Bureau Definitions)

Tables 4, 5, and 6 show authorized housing units based on the structure types defined below by the U.S. Census Bureau. The number of units shown in these tables refers to those authorized by building permits issued for new construction only.

Single-Family Houses

Include all detached one-family houses and all attached one-family houses separated by a wall that extends from ground to roof with no common heating system or inter-structural public utilities. Include prefabricated, sectionalized, panelized, and modular homes that are manufactured partially off site, but are transported and assembled at the construction site.

Two-Family Buildings

Include all buildings with two housing units that may be above one another or side by side. If built side by side, the structures (1) do not have a wall that extends from ground to roof; or (2) share a heating system; or (3) have inter-structural public utilities, such as water supply and sewage disposal.

Three- and Four-Family Buildings

Include all buildings with three or four housing units. If built side by side, the structures (1) do not have a wall that extends from ground to roof; or (2) share a heating system; or (3) have inter-structural public utilities, such as water supply and sewage disposal.

Five-or-More-Family Buildings

Include all buildings with five or more housing units. If built side by side, the structures (1) do not have a wall that extends from ground to roof; or (2) share a heating system; or (3) have inter-structural public utilities, such as water supply and sewage disposal.

Private Housing Units

Housing owned by a private company or individual during the period of construction. This includes all housing built by nonprofit organizations and "turnkey" housing; for example, housing that will be sold to a local public housing authority when completed.

Public Housing Units

Housing owned by a governmental body during the period of construction.

Table 1a

Housing Units Authorized by Building Permits New Jersey Counties: 2006

County	Region	Total	1 & 2 Family	Multifamily	Mixed Use	Rank
ATLANTIC	SOUTH	1,910	1,611	289	10	6
BERGEN	NORTH	1,689	1,194	489	6	7
BURLINGTON	SOUTH	1,157	881	267	9	13
CAMDEN	SOUTH	1,420	1,029	374	17	10
CAPE MAY	SOUTH	1,661	1,326	332	3	8
CUMBERLAND	SOUTH	683	649	30	4	17
ESSEX	NORTH	3,112	1,756	1,354	2	2
GLOUCESTER	SOUTH	1,292	1,112	165	15	12
HUDSON	NORTH	4,489	823	3,655	11	1
HUNTERDON	CENTRAL	427	381	37	9	19
MERCER	CENTRAL	901	622	264	15	15
MIDDLESEX	CENTRAL	2,475	1,232	1,238	5	4
MONMOUTH	CENTRAL	2,009	1,340	666	3	5
MORRIS	NORTH	1,364	725	624	15	11
OCEAN	CENTRAL	2,671	2,533	101	37	3
PASSAIC	NORTH	1,138	541	588	9	14
SALEM	SOUTH	350	186	162	2	21
SOMERSET	CENTRAL	746	537	207	2	16
SUSSEX	NORTH	527	474	52	1	18
UNION	NORTH	1,643	965	657	21	9
WARREN	NORTH	384	173	209	2	20
STATE BUILDINGS*		2	0	0	2	
NEW JERSEY		32,050	20,090	11,760	200	
NJ 2005 (5/8/06)		39,688	26,715	12,687	286	
NJ 2004 (4/7/05)		39,254	27,103	11,399	752	
NJ 2003 (4/7/04)		35,171	25,445	8,929	797	
NJ 2002 (5/7/03)		34,589	25,697	8,251	641	
NJ 2001 (5/13/02)		35,680	24,617	9,815	1,248	
NJ 2000 (6/11/01)		38,065	26,938	9,902	1,225	
NJ 1999 (8/8/00)		37,536	28,788	8,014	734	
NJ 1998 (5/18/99)		35,676	27,597	7,115	964	
AHOUSE 4/9/07						

The definition of housing units in this table differs from the definitions used in Tables 4, 5, and 6. See "Data Comparability" on page 1, and Exhibits B and C on pages 3 and 4 for details.

*State buildings refer to structures owned or constructed by the State or its instrumentalities. See Exhibit A on page 2 for an explanation of terms.

Table 1b

Housing Units Authorized by Building Permits New Jersey Top Municipalities: 2006						
Rank	Municipality	County	Total	1 & 2 Family	Multifamily	Mixed Use
1	JERSEY CITY	HUDSON	2,578	586	1,992	0
2	NEWARK CITY	ESSEX	2,125	1,037	1,088	0
3	HOBOKEN CITY	HUDSON	995	0	995	0
4	MONROE TWP	MIDDLESEX	836	469	367	0
5	EGG HARBOR TWP	ATLANTIC	625	603	22	0
6	ELIZABETH CITY	UNION	588	431	157	0
7	MANALAPAN TWP	MONMOUTH	414	313	101	0
8	WEST NEW YORK TOWN	HUDSON	406	24	382	0
9	JACKSON TWP	OCEAN	405	404	0	1
10	WINSLOW TWP	CAMDEN	373	372	0	1
11	PATERSON CITY	PASSAIC	353	243	106	4
12	LAKEWOOD TWP	OCEAN	328	295	33	0
13	RAHWAY CITY	UNION	316	44	272	0
14	FRANKLIN TWP	SOMERSET	313	308	5	0
15	HAMILTON TWP	MERCER	312	156	154	2
16	BARNEGAT TWP	OCEAN	311	307	0	4
17	NORTH WILDWOOD CITY	CAPE MAY	308	193	115	0
18	PERTH AMBOY CITY	MIDDLESEX	302	53	249	0
19	OLD BRIDGE TWP	MIDDLESEX	294	260	34	0
20	OCEAN CITY	CAPE MAY	291	280	11	0
	TOP MUNICIPALITIES		12,473	6,378	6,083	12
	NEW JERSEY		32,050	20,090	11,760	200
	TOP AS % OF STATE		38.9%	31.7%	51.7%	6.0%

AHSEMUN2 4/9/07

Table 1c

**Housing Units Authorized by New Construction Building Permits
New Jersey Counties: 2006**

County	Region	Total	1 & 2 Family	Multifamily	Mixed Use	Rank
ATLANTIC	SOUTH	1,876	1,579	288	9	6
BERGEN	NORTH	1,605	1,165	435	5	7
BURLINGTON	SOUTH	1,107	861	241	5	13
CAMDEN	SOUTH	1,208	844	348	16	11
CAPE MAY	SOUTH	1,600	1,265	332	3	9
CUMBERLAND	SOUTH	600	566	30	4	17
ESSEX	NORTH	3,102	1,746	1,354	2	2
GLOUCESTER	SOUTH	1,167	1,000	158	9	12
HUDSON	NORTH	4,042	819	3,212	11	1
HUNTERDON	CENTRAL	422	376	37	9	19
MERCER	CENTRAL	889	612	262	15	15
MIDDLESEX	CENTRAL	2,363	1,221	1,137	5	4
MONMOUTH	CENTRAL	1,980	1,316	662	2	5
MORRIS	NORTH	1,347	712	620	15	10
OCEAN	CENTRAL	2,598	2,470	99	29	3
PASSAIC	NORTH	948	477	462	9	14
SALEM	SOUTH	344	181	162	1	21
SOMERSET	CENTRAL	736	528	207	1	16
SUSSEX	NORTH	519	466	52	1	18
UNION	NORTH	1,605	929	657	19	8
WARREN	NORTH	382	171	209	2	20
STATE BUILDINGS*		0	0	0	0	
NEW JERSEY		30,440	19,304	10,964	172	
NJ 2005 (5/8/06)		38,228	25,935	12,048	245	
NJ 2004 (4/7/05)		38,170	26,510	10,990	670	
NJ 2003 (4/7/04)		33,239	24,698	7,846	695	
NJ 2002 (5/7/03)		33,103	24,873	7,676	554	
NJ 2001 (5/13/02)		34,038	24,292	8,787	959	
NJ 2000 (6/11/01)		37,125	26,308	9,679	1,138	
NJ 1999 (8/8/00)		36,416	28,037	7,772	607	
NJ 1998 (5/18/99)		34,714	27,231	6,573	910	
ANEWHSE 4/9/07						

The definition of housing units in this table differs from the definitions used in Tables 4, 5, and 6. See "Data Comparability" on page 1, and Exhibits B and C on pages 3 and 4 for details.

*State buildings refer to structures owned or constructed by the State or its instrumentalities. See Exhibit A on page 2 for an explanation of terms.

Housing Units Authorized by Building Permits 2006

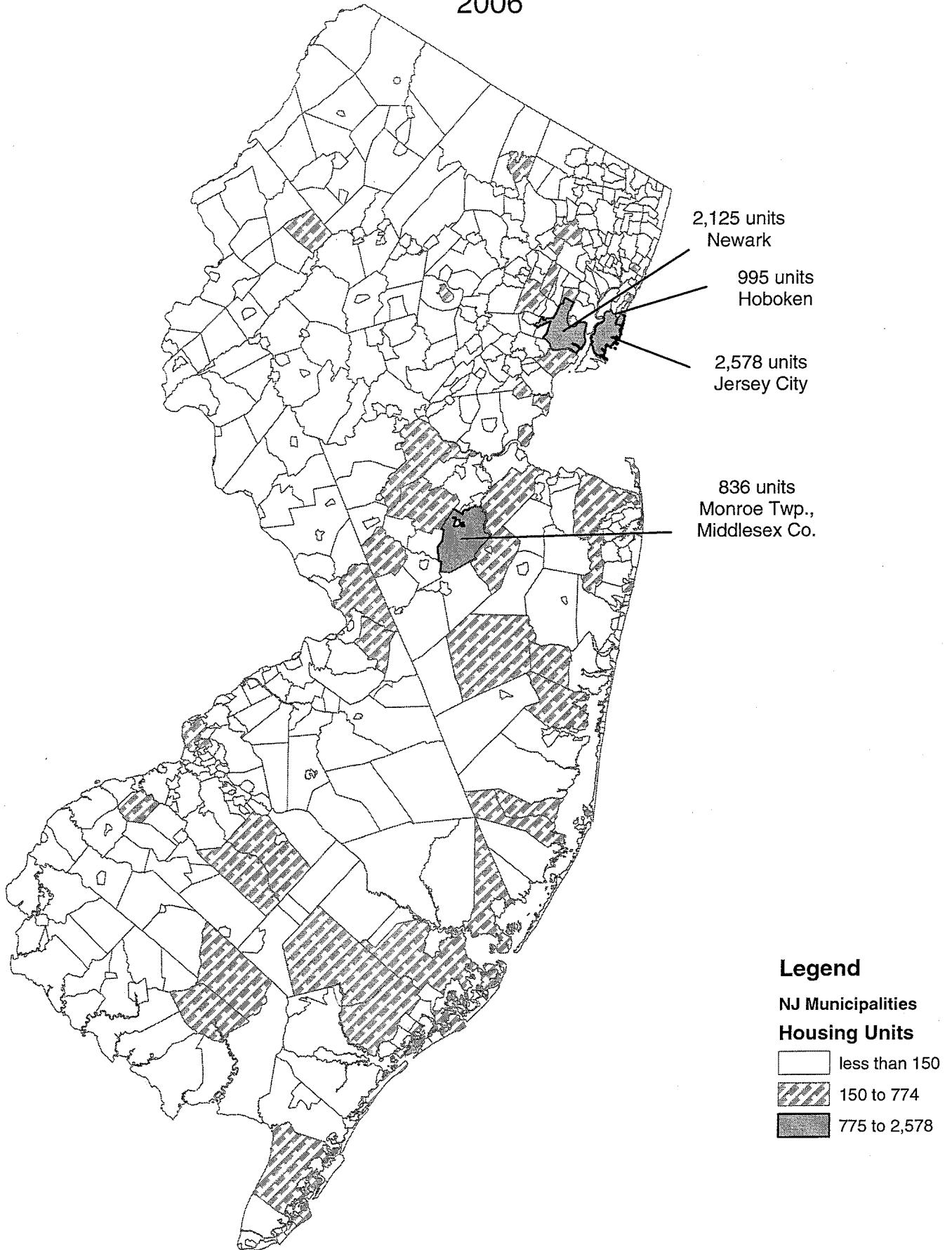


Table 2a

Housing Units Certified New Jersey Counties: 2006

County	Region	Total	1 & 2 Family	Multifamily	Mixed Use	Rank
ATLANTIC	SOUTH	1,646	1,533	109	4	7
BERGEN	NORTH	1,591	940	556	95	8
BURLINGTON	SOUTH	1,199	875	314	10	12
CAMDEN	SOUTH	1,026	848	152	26	14
CAPE MAY	SOUTH	1,506	1,440	62	4	9
CUMBERLAND	SOUTH	553	526	24	3	18
ESSEX	NORTH	2,480	1,441	1,039	0	2
GLOUCESTER	SOUTH	1,684	1,386	280	18	6
HUDSON	NORTH	2,151	861	1,286	4	3
HUNTERDON	CENTRAL	328	321	1	6	19
MERCER	CENTRAL	1,469	843	624	2	10
MIDDLESEX	CENTRAL	2,034	1,618	351	65	4
MONMOUTH	CENTRAL	1,898	1,534	355	9	5
MORRIS	NORTH	1,379	749	620	10	11
OCEAN	CENTRAL	3,441	2,971	384	86	1
PASSAIC	NORTH	824	263	560	1	16
SALEM	SOUTH	263	194	60	9	21
SOMERSET	CENTRAL	889	507	380	2	15
SUSSEX	NORTH	703	523	1	179	17
UNION	NORTH	1,171	651	493	27	13
WARREN	NORTH	324	197	124	3	20
STATE BUILDINGS*		5	0	0	5	
NEW JERSEY		28,564	20,221	7,775	568	
NJ 2005 (5/8/06)		31,049	23,038	7,531	480	
NJ 2004 (4/7/05)		27,950	21,521	6,025	404	
NJ 2003 (4/7/04)		26,932	21,287	5,467	178	
NJ 2002 (5/7/03)		29,174	22,962	5,347	865	
NJ 2001 (5/13/02)		30,054	22,600	6,014	1,440	
NJ 2000 (6/11/01)		29,705	23,961	5,156	588	
NJ 1999 (8/8/00)		28,109	24,395	3,193	521	
NJ 1998 (5/18/99)		28,008	23,593	3,852	563	
ACERTS 4/9/07						

The definition of housing units in this table differs from the definitions used in Tables 4, 5, and 6. See "Data Comparability" on page 1, and Exhibits B and C on pages 3 and 4 for details.

*State buildings refer to structures owned or constructed by the State or its instrumentalities. See Exhibit A on page 2 for an explanation of terms.

Table 2b

Housing Units Certified New Jersey Top Municipalities: 2006						
Rank	Municipality	County	Total	1 & 2 Family	Multifamily	Mixed Use
1	NEWARK CITY	ESSEX	1,901	1,138	763	0
2	JERSEY CITY	HUDSON	955	600	355	0
3	LAKESWOOD TWP	OCEAN	754	452	302	0
4	WEST WINDSOR TWP	MERCER	709	180	529	0
5	MONROE TWP	MIDDLESEX	614	614	0	0
6	EGG HARBOR TWP	ATLANTIC	548	548	0	0
7	FRANKLIN TWP	SOMERSET	485	284	199	2
8	JACKSON TWP	OCEAN	477	474	0	3
9	OCEAN CITY	CAPE MAY	442	442	0	0
10	WEST NEW YORK TOWN	HUDSON	441	32	409	0
11	MANALAPAN TWP	MONMOUTH	432	424	8	0
12	HOBOKEN CITY	HUDSON	407	2	405	0
13	OLD BRIDGE TWP	MIDDLESEX	402	372	30	0
14	RAHWAY CITY	UNION	396	82	314	0
15	PEQUANNOCK TWP	MORRIS	393	7	386	0
16	ELIZABETH CITY	UNION	392	330	62	0
17	WINSLOW TWP	CAMDEN	372	372	0	0
18	BARNEGAT TWP	OCEAN	350	349	0	1
19	OCEAN TWP	MONMOUTH	345	137	208	0
20	WANAQUE BORO	PASSAIC	337	0	337	0
	TOP MUNICIPALITIES		11,152	6,839	4,307	6
	NEW JERSEY		28,564	20,221	7,775	568
	TOP AS % OF STATE		39.0%	33.8%	55.4%	1.1%

ACERTMN2 4/9/07

Table 3a

Housing Unit Demolitions New Jersey Counties: 2006						
County	Region	Total	1 & 2 Family	Multifamily	Mixed Use	Rank
ATLANTIC	SOUTH	278	256	12	10	10
BERGEN	NORTH	736	691	23	22	1
BURLINGTON	SOUTH	182	139	25	18	12
CAMDEN	SOUTH	471	465	5	1	7
CAPE MAY	SOUTH	626	587	36	3	4
CUMBERLAND	SOUTH	127	120	4	3	14
ESSEX	NORTH	552	351	184	17	5
GLOUCESTER	SOUTH	112	105	0	7	16
HUDSON	NORTH	634	484	148	2	3
HUNTERDON	CENTRAL	63	56	2	5	18
MERCER	CENTRAL	136	111	11	14	13
MIDDLESEX	CENTRAL	191	182	2	7	11
MONMOUTH	CENTRAL	450	425	13	12	8
MORRIS	NORTH	335	288	36	11	9
OCEAN	CENTRAL	696	688	4	4	2
PASSAIC	NORTH	124	90	19	15	15
SALEM	SOUTH	56	50	4	2	19
SOMERSET	CENTRAL	108	97	3	8	17
SUSSEX	NORTH	35	31	0	4	21
UNION	NORTH	480	430	30	20	6
WARREN	NORTH	51	42	0	9	20
STATE BUILDINGS*		17	17	0	0	
NEW JERSEY		6,460	5,705	561	194	
NJ 2005 (5/8/06)		6,926	5,969	657	300	
NJ 2004 (4/7/05)		6,706	5,289	1,035	382	
NJ 2003 (4/7/04)		5,006	4,147	632	227	
NJ 2002 (5/7/03)		5,182	3,536	1,387	259	
NJ 2001 (5/13/02)		4,471	3,438	856	177	
NJ 2000 (6/11/01)		4,304	3,304	859	141	
NJ 1999 (8/8/00)		4,134	2,554	1,516	64	
NJ 1998 (5/18/99)		2,967	2,411	549	7	
ADEMOS 4/9/07						

The definition of housing units in this table differs from the definitions used in Tables 4, 5, and 6. See "Data Comparability" on page 1, and Exhibits B and C on pages 3 and 4 for details.

*State buildings refer to structures owned or constructed by the State or its instrumentalities. See Exhibit A on page 2 for an explanation of terms.

Table 3b

Housing Unit Demolitions New Jersey Top Municipalities: 2006						
Rank	Municipality	County	Total	1 & 2 Family	Multifamily	Mixed Use
1	JERSEY CITY	HUDSON	458	395	63	0
2	NEWARK CITY	ESSEX	297	203	94	0
3	CAMDEN CITY	CAMDEN	267	266	1	0
4	ELIZABETH CITY	UNION	251	220	29	2
5	OCEAN CITY	CAPE MAY	196	171	25	0
6	TOMS RIVER TWP	OCEAN	160	159	0	1
7	EAST ORANGE CITY	ESSEX	124	38	86	0
8	SEA ISLE CITY	CAPE MAY	85	85	0	0
9	UNION CITY	HUDSON	83	38	45	0
10	BRICK TWP	OCEAN	81	81	0	0
11	WESTFIELD TOWN	UNION	81	71	0	10
12	AVALON BORO	CAPE MAY	78	78	0	0
13	PATERSON CITY	PASSAIC	73	47	19	7
14	GLOUCESTER CITY	CAMDEN	71	71	0	0
15	LAKEWOOD TWP	OCEAN	65	64	1	0
16	LONG BEACH TWP	OCEAN	65	65	0	0
17	TRENTON CITY	MERCER	63	55	4	4
18	MARGATE CITY	ATLANTIC	59	56	3	0
19	BRIGANTINE CITY	ATLANTIC	58	54	4	0
20	WILDWOOD CITY	CAPE MAY	58	55	3	0
	TOP MUNICIPALITIES		2,673	2,272	377	24
	NEW JERSEY		6,460	5,705	561	194
	TOP AS % OF STATE		41.4%	39.8%	67.2%	12.4%

ADEMOMN2 4/9/07

Table 4

Residential Construction Authorized by Building Permits (Census Definitions) New Jersey: 2006				
Type of Construction	Total Dwelling Units Authorized			
	Total 2005	Total 2006	Change	
			Number	Percent
Total Private Units Authorized	38,588	34,323	-4,265	-11.1
Single Family	22,264	17,113	-5,151	-23.1
Two Family	3,212	3,088	-124	-3.9
Three or Four Family	1,437	1,708	271	18.9
Five or More Family	11,675	12,414	739	6.3

ACENSUS1 4/9/07

Authorized dwelling units in the Table 1 and Table 2 series do not match those in Tables 4, 5, and 6 due to definitional differences. See "Data Comparability" section on page 1, and Exhibits B and C on pages 3 and 4 for details.

Data in this table are not comparable to data previously released in the *NEW JERSEY CONSTRUCTION REPORTER Annual Report 1995*. Beginning with the annual data for 1996, the data contained in Tables 4, 5, and 6 of this report will be from the United States Census Bureau's monthly building permits survey. In the *NEW JERSEY CONSTRUCTION REPORTER Annual Report 1995*, the data contained in these tables were from the New Jersey Department of Labor's residential building permits program. The two data series differ due to methodological differences. See the Data Comparability section for more detail.

Source: U.S. Census Bureau, Manufacturing and Construction Division
Prepared by: N.J. Department of Labor and Workforce Development, April 2007

Table 5

Residential Construction Authorized by Building Permits (Census Definitions) New Jersey: 1987 to 2006						
Year and Month	Number of Municipalities Reporting	Dwelling Units Authorized				
		Total	Private			
			Single Family	Two Family	3 or 4 Family	5 or More Family
1987	567	51,462	36,497	2,408	715	11,842
1988	567	40,909	28,452	1,708	522	10,227
1989	567	30,337	20,880	1,198	334	7,925
1990	567	17,524	12,801	654	130	3,939
1991	567	14,856	12,869	402	101	1,484
1992	567	19,072	16,506	510	74	1,982
1993	567	25,188	21,340	758	129	2,961
1994	567	25,388	22,437	722	121	2,108
1995	567	21,521	18,341	670	158	2,352
1996	567	24,173	20,853	880	211	2,229
1997	566	28,018	23,472	916	324	3,306
1998	566	31,345	25,459	1,172	221	4,493
1999	566	31,976	25,129	1,468	290	5,089
2000	566	34,585	25,260	1,844	305	7,176
2001	566	28,267	21,503	1,827	779	4,158
2002	566	30,441	22,379	2,110	742	5,210
2003	566	32,984	22,163	2,870	912	7,039
2004	566	35,936	22,429	3,300	1,476	8,731
2005	566	38,588	22,264	3,212	1,437	11,675
2006	566	34,323	17,113	3,088	1,708	12,414

ACENSUS2 4/9/07

Authorized dwelling units in the Table 1 and Table 2 series do not match those in Tables 4, 5, and 6 due to definitional differences. See "Data Comparability" section on page 1, and Exhibits B and C on pages 3 and 4 for details.

Data in this table are not comparable to data previously released in the *NEW JERSEY CONSTRUCTION REPORTER Annual Report 1995*. Beginning with the annual data for 1996, the data contained in Tables 4, 5, and 6 of this report will be from the United States Census Bureau's monthly building permits survey. In the *NEW JERSEY CONSTRUCTION REPORTER Annual Report 1995*, the data contained in these tables were from the New Jersey Department of Labor's residential building permits program. The two data series differ due to methodological differences. See the Data Comparability section for more detail.

Source: U.S. Census Bureau, Manufacturing and Construction Division
Prepared by: N.J. Department of Labor and Workforce Development, April 2007

Table 6

**Residential Construction Authorized by Building Permits
(Census Definitions)
New Jersey Counties: 2006**

County	Total Dwelling Units Authorized				
	Total	Private			
		Single Family	Two Family	3 or 4 Family	5 or More Family
ATLANTIC	1,893	1,536	36	27	294
BERGEN	2,164	1,096	260	45	763
BURLINGTON	2,784	996	204	0	1,584
CAMDEN	1,183	872	0	74	237
CAPE MAY	1,580	774	276	107	423
CUMBERLAND	737	693	14	30	0
ESSEX	3,284	654	972	905	753
GLOUCESTER	1,141	1,021	0	0	120
HUDSON	4,275	277	628	252	3,118
HUNTERDON	350	305	4	19	22
MERCER	847	578	64	0	205
MIDDLESEX	2,567	1,177	36	15	1,339
MONMOUTH	2,820	1,517	146	165	992
MORRIS	1,670	791	6	16	857
OCEAN	2,114	2,079	6	3	26
PASSAIC	850	375	26	6	443
SALEM	298	197	0	0	101
SOMERSET	1,058	623	4	3	428
SUSSEX	603	551	4	3	45
UNION	1,593	549	400	38	606
WARREN	512	452	2	0	58
NEW JERSEY	34,323	17,113	3,088	1,708	12,414

ACENSUS3 4/9/07

Authorized dwelling units in the Table 1 and Table 2 series do not match those in Tables 4, 5, and 6 due to definitional differences. See "Data Comparability" section on page 1, and Exhibits B and C on pages 3 and 4 for details.

Data in this table are not comparable to data previously released in the *NEW JERSEY CONSTRUCTION REPORTER Annual Report 1995*. Beginning with the annual data for 1996, the data contained in Tables 4, 5, and 6 of this report will be from the United States Census Bureau's monthly building permits survey. In the *NEW JERSEY CONSTRUCTION REPORTER Annual Report 1995*, the data contained in these tables were from the New Jersey Department of Labor's residential building permits program. The two data series differ due to methodological differences. See the Data Comparability section for more detail.

Source: U.S. Census Bureau, Manufacturing and Construction Division
Prepared by: N.J. Department of Labor and Workforce Development, April 2007

Table 7a

**Office Square Feet Authorized by Building Permits
New Jersey Counties: 2006**

County	Region	Total	New Construction	Additions	Rank
ATLANTIC	SOUTH	264,155	215,341	48,814	13
BERGEN	NORTH	897,543	753,833	143,710	4
BURLINGTON	SOUTH	770,722	762,495	8,227	7
CAMDEN	SOUTH	424,278	397,095	27,183	10
CAPE MAY	SOUTH	79,758	72,476	7,282	20
CUMBERLAND	SOUTH	122,448	111,768	10,680	17
ESSEX	NORTH	615,108	513,972	101,136	8
GLOUCESTER	SOUTH	226,933	207,299	19,634	15
HUDSON	NORTH	106,542	105,158	1,384	19
HUNTERDON	CENTRAL	234,858	218,204	16,654	14
MERCER	CENTRAL	818,421	657,269	161,152	5
MIDDLESEX	CENTRAL	1,224,219	676,406	547,813	2
MONMOUTH	CENTRAL	937,008	827,389	109,619	3
MORRIS	NORTH	1,538,458	1,497,634	40,824	1
OCEAN	CENTRAL	807,899	740,276	67,623	6
PASSAIC	NORTH	449,734	404,028	45,706	9
SALEM	SOUTH	15,414	9,080	6,334	21
SOMERSET	CENTRAL	346,014	317,917	28,097	12
SUSSEX	NORTH	199,738	188,181	11,557	16
UNION	NORTH	388,660	306,881	81,779	11
WARREN	NORTH	107,775	91,787	15,988	18
STATE BUILDINGS*		537,870	471,070	66,800	
NEW JERSEY		11,113,555	9,545,559	1,567,996	
NJ 2005 (5/8/06)		11,038,132	9,571,402	1,466,730	
NJ 2004 (4/7/05)		12,219,068	10,293,662	1,925,406	
NJ 2003 (4/7/04)		9,744,146	7,926,751	1,817,395	
NJ 2002 (5/7/03)		9,261,054	7,566,701	1,694,353	
NJ 2001 (5/13/02)		19,134,533	16,558,672	2,575,861	
NJ 2000 (6/11/01)		15,531,039	14,160,954	1,370,085	
NJ 1999 (8/8/00)		13,237,891	11,466,317	1,771,574	
NJ 1998 (5/18/99)		12,703,824	10,672,465	2,031,359	

AOFFCSPC 4/9/07

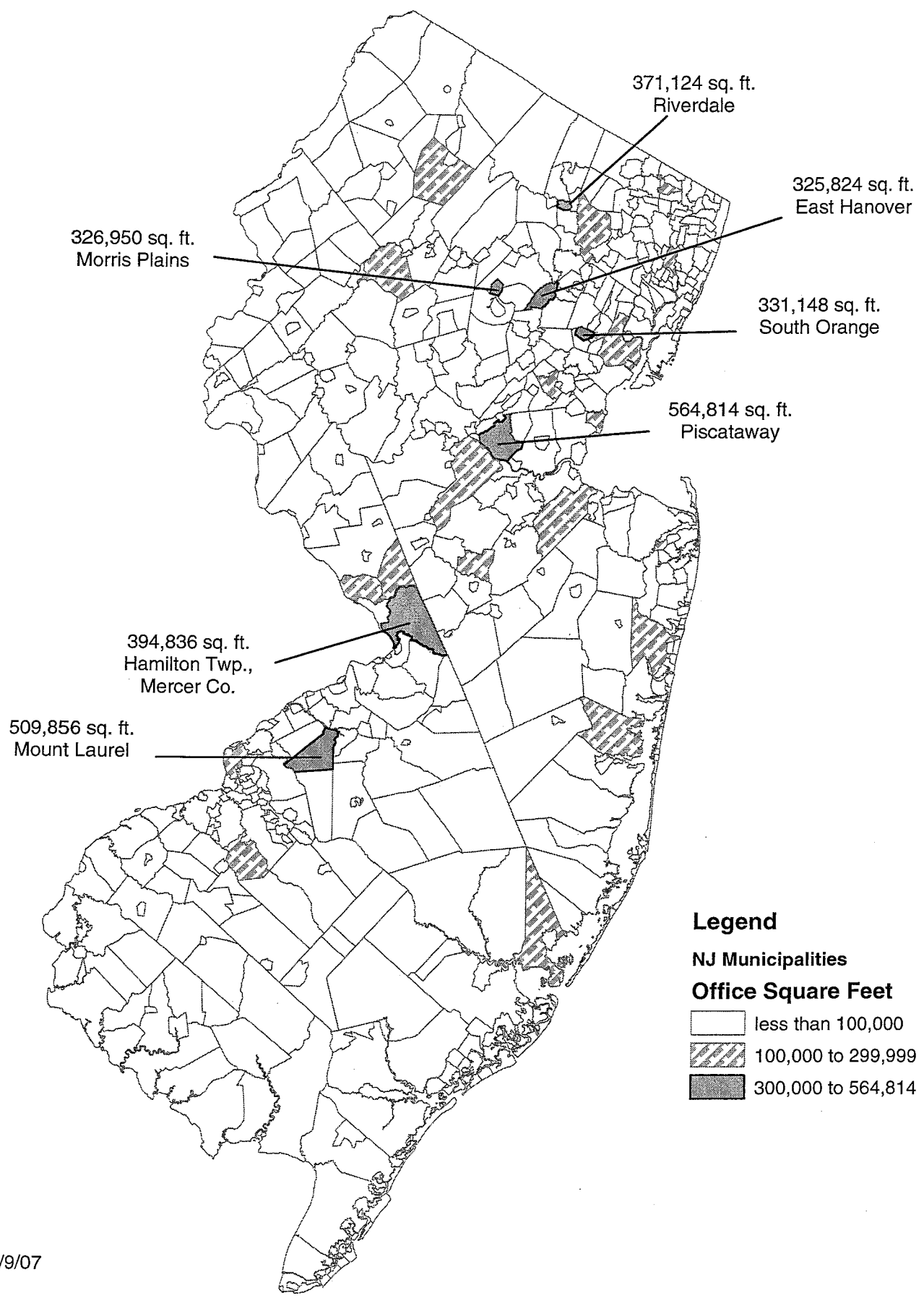
*State buildings refer to structures owned or constructed by the State or its instrumentalities. See Exhibit A on page 2 for an explanation of terms.

Table 7b

Office Square Feet Authorized by Building Permits New Jersey Top Municipalities: 2006					
Rank	Municipality	County	Total	New Construction	Additions
1	PISCATAWAY TWP	MIDDLESEX	564,814	94,014	470,800
2	MOUNT LAUREL TWP	BURLINGTON	509,856	509,856	0
3	HAMILTON TWP	MERCER	394,836	331,425	63,411
4	RIVERDALE BORO	MORRIS	371,124	371,124	0
5	SOUTH ORANGE VILLAGE	ESSEX	331,148	322,003	9,145
6	MORRIS PLAINS BORO	MORRIS	326,950	326,950	0
7	EAST HANOVER TWP	MORRIS	325,824	324,790	1,034
8	WALL TWP	MONMOUTH	248,589	230,476	18,113
9	TOMS RIVER TWP	OCEAN	230,770	195,362	35,408
10	FRANKLIN TWP	SOMERSET	211,175	211,175	0
11	WAYNE TWP	PASSAIC	209,460	209,460	0
12	WOODCLIFF LAKE BORO	BERGEN	206,740	206,740	0
13	LITTLE EGG HARBOR TWP	OCEAN	206,693	192,450	14,243
14	RED BANK BORO	MONMOUTH	194,553	189,364	5,189
15	MOUNT OLIVE TWP	MORRIS	192,634	192,634	0
16	CARTERET BORO	MIDDLESEX	151,478	151,478	0
17	WASHINGTON TWP	GLOUCESTER	144,941	144,941	0
18	WESTFIELD TOWN	UNION	144,731	134,068	10,663
19	EWING TWP	MERCER	128,460	49,260	79,200
20	OLD BRIDGE TWP	MIDDLESEX	121,974	109,725	12,249
	TOP MUNICIPALITIES		5,216,750	4,497,295	719,455
	NEW JERSEY		11,113,555	9,545,559	1,567,996
	TOP AS % OF STATE		46.9%	47.1%	45.9%

AOFFCMN2 4/9/07

Office Square Feet Authorized by Building Permits 2006



Legend

NJ Municipalities

Office Square Feet

- less than 100,000
- 100,000 to 299,999
- 300,000 to 564,814

Table 8

Office Square Feet Certified New Jersey Counties: 2006					
County	Region	Total	New Construction	Additions	Rank
ATLANTIC	SOUTH	68,150	60,653	7,497	20
BERGEN	NORTH	530,041	396,796	133,245	3
BURLINGTON	SOUTH	435,358	393,142	42,216	7
CAMDEN	SOUTH	453,034	429,191	23,843	5
CAPE MAY	SOUTH	73,458	58,600	14,858	19
CUMBERLAND	SOUTH	163,499	151,095	12,404	12
ESSEX	NORTH	114,193	84,153	30,040	14
GLOUCESTER	SOUTH	450,231	434,200	16,031	6
HUDSON	NORTH	854,765	852,076	2,689	2
HUNTERDON	CENTRAL	107,970	87,135	20,835	16
MERCER	CENTRAL	206,003	203,751	2,252	11
MIDDLESEX	CENTRAL	980,867	947,069	33,798	1
MONMOUTH	CENTRAL	319,680	257,163	62,517	10
MORRIS	NORTH	356,046	245,573	110,473	9
OCEAN	CENTRAL	489,043	450,904	38,139	4
PASSAIC	NORTH	103,978	30,368	73,610	17
SALEM	SOUTH	5,280	5,280	0	21
SOMERSET	CENTRAL	403,928	374,906	29,022	8
SUSSEX	NORTH	98,118	83,717	14,401	18
UNION	NORTH	111,469	9,659	101,810	15
WARREN	NORTH	116,260	111,240	5,020	13
STATE BUILDINGS*		474,643	241,278	233,365	
NEW JERSEY		6,916,014	5,907,949	1,008,065	
NJ 2005 (5/8/06)		7,166,161	6,331,216	834,945	
NJ 2004 (4/7/05)		10,250,691	8,833,568	1,417,123	
NJ 2003 (4/7/04)		6,423,661	5,182,943	1,240,718	
NJ 2002 (5/7/03)		9,222,520	7,775,591	1,446,929	
NJ 2001 (5/13/02)		9,207,429	8,323,276	884,153	
NJ 2000 (6/11/01)		6,991,281	5,755,426	1,235,855	
NJ 1999 (8/6/00)		7,836,926	6,395,021	1,441,905	
NJ 1998 (5/18/99)		5,244,708	4,283,021	961,687	
ACERTOFF 4/9/07					

*State buildings refer to structures owned or constructed by the State or its instrumentalities. See Exhibit A on page 2 for an explanation of terms.

Table 9a

Retail Square Feet Authorized by Building Permits New Jersey Counties: 2006					
County	Region	Total	New Construction	Additions	Rank
ATLANTIC	SOUTH	187,482	181,072	6,410	11
BERGEN	NORTH	194,868	191,517	3,351	9
BURLINGTON	SOUTH	159,087	159,087	0	13
CAMDEN	SOUTH	620,627	620,067	560	1
CAPE MAY	SOUTH	194,680	190,952	3,728	10
CUMBERLAND	SOUTH	487,449	487,449	0	3
ESSEX	NORTH	34,276	23,573	10,703	18
GLOUCESTER	SOUTH	37,153	37,153	0	17
HUDSON	NORTH	239,486	239,149	337	6
HUNTERDON	CENTRAL	32,859	18,730	14,129	19
MERCER	CENTRAL	106,437	97,995	8,442	15
MIDDLESEX	CENTRAL	505,743	483,123	22,620	2
MONMOUTH	CENTRAL	197,248	170,709	26,539	8
MORRIS	NORTH	215,553	168,200	47,353	7
OCEAN	CENTRAL	422,163	373,949	48,214	4
PASSAIC	NORTH	240,201	237,477	2,724	5
SALEM	SOUTH	6,889	6,889	0	21
SOMERSET	CENTRAL	166,282	162,860	3,422	12
SUSSEX	NORTH	11,119	7,200	3,919	20
UNION	NORTH	150,010	133,717	16,293	14
WARREN	NORTH	42,577	14,187	28,390	16
STATE BUILDINGS*		934,473	934,473	0	
NEW JERSEY		5,186,662	4,939,528	247,134	
NJ 2005 (5/8/06)		5,965,258	5,837,653	127,605	
NJ 2004 (4/7/05)		4,911,257	4,468,454	442,803	
NJ 2003 (4/7/04)		6,038,428	5,512,719	525,709	
NJ 2002 (5/7/03)		7,560,913	6,912,657	648,256	
NJ 2001 (5/13/02)		7,244,833	6,903,479	341,354	
NJ 2000 (6/11/01)		6,063,412	5,668,647	394,765	
NJ 1999 (8/8/00)		6,226,471	5,916,942	309,529	
NJ 1998 (5/18/99)		7,921,892	7,301,570	620,322	
ARETSPLACE 4/9/07					

*State buildings refer to structures owned or constructed by the State or its instrumentalities. See Exhibit A on page 2 for an explanation of terms.

Table 9b

Retail Square Feet Authorized by Building Permits New Jersey Top Municipalities: 2006					
Rank	Municipality	County	Total	New Construction	Additions
1	GLOUCESTER TWP	CAMDEN	510,294	509,734	560
2	MILLVILLE CITY	CUMBERLAND	462,979	462,979	0
3	JERSEY CITY	HUDSON	239,486	239,149	337
4	SOUTH BRUNSWICK TWP	MIDDLESEX	234,008	219,538	14,470
5	PATERSON CITY	PASSAIC	228,416	225,827	2,589
6	OLD BRIDGE TWP	MIDDLESEX	164,885	164,885	0
7	STAFFORD TWP	OCEAN	159,268	159,268	0
8	ATLANTIC CITY	ATLANTIC	140,488	139,328	1,160
9	CHERRY HILL TWP	CAMDEN	108,808	108,808	0
10	EAST WINDSOR TWP	MERCER	79,138	75,338	3,800
11	EAST HANOVER TWP	MORRIS	71,872	71,872	0
12	MANCHESTER TWP	OCEAN	69,962	69,962	0
13	PARAMUS BORO	BERGEN	65,377	64,000	1,377
14	MIDDLE TWP	CAPE MAY	64,736	64,736	0
15	BRICK TWP	OCEAN	63,876	19,338	44,538
16	ROCKAWAY BORO	MORRIS	62,920	62,920	0
17	UNION TWP	UNION	59,892	59,892	0
18	OCEAN CITY	CAPE MAY	57,913	55,513	2,400
19	BRIDGEWATER TWP	SOMERSET	57,879	56,532	1,347
20	ASBURY PARK CITY	MONMOUTH	53,345	53,345	0
	TOP MUNICIPALITIES		2,955,542	2,882,964	72,578
	NEW JERSEY		5,186,662	4,939,528	247,134
	TOP AS % OF STATE		57.0%	58.4%	29.4%

ARETMUN1 4/9/07

Retail Square Feet Authorized by Building Permits 2006

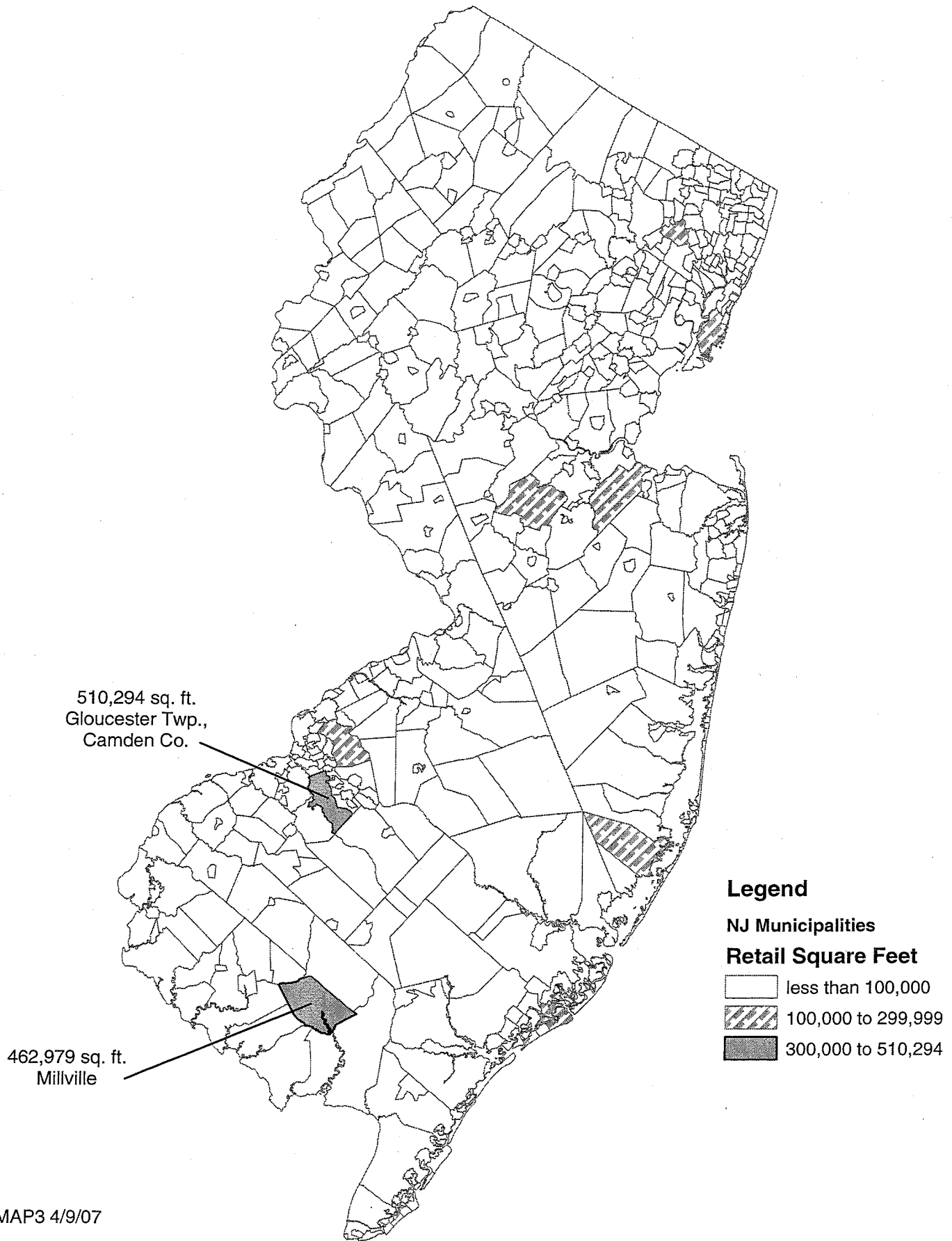


Table 10

Retail Square Feet Certified New Jersey Counties: 2006					
County	Region	Total	New Construction	Additions	Rank
ATLANTIC	SOUTH	16,520	16,006	514	19
BERGEN	NORTH	378,510	331,587	46,923	4
BURLINGTON	SOUTH	188,473	188,473	0	9
CAMDEN	SOUTH	719,008	658,178	60,830	1
CAPE MAY	SOUTH	189,696	183,391	6,305	8
CUMBERLAND	SOUTH	481,230	481,230	0	2
ESSEX	NORTH	39,236	39,236	0	18
GLOUCESTER	SOUTH	91,188	130	91,058	13
HUDSON	NORTH	47,000	47,000	0	16
HUNTERDON	CENTRAL	43,403	43,403	0	17
MERCER	CENTRAL	89,503	81,712	7,791	14
MIDDLESEX	CENTRAL	352,666	331,462	21,204	5
MONMOUTH	CENTRAL	191,475	174,207	17,268	7
MORRIS	NORTH	423,913	423,913	0	3
OCEAN	CENTRAL	179,499	178,111	1,388	10
PASSAIC	NORTH	65,109	57,009	8,100	15
SALEM	SOUTH	13,778	13,778	0	20
SOMERSET	CENTRAL	237,665	237,665	0	6
SUSSEX	NORTH	6,418	2,696	3,722	21
UNION	NORTH	123,184	114,262	8,922	12
WARREN	NORTH	152,915	119,565	33,350	11
STATE BUILDINGS*		64,051	64,051	0	
NEW JERSEY		4,094,440	3,787,065	307,375	
NJ 2005 (5/8/06)		4,936,960	4,623,939	313,021	
NJ 2004 (4/7/05)		3,646,940	3,495,795	151,145	
NJ 2003 (4/7/04)		4,815,912	4,678,767	137,145	
NJ 2002 (5/7/03)		5,183,029	4,811,412	371,617	
NJ 2001 (5/13/02)		3,666,557	3,295,499	371,058	
NJ 2000 (6/11/01)		4,463,973	4,346,465	117,508	
NJ 1999 (8/8/00)		3,949,405	3,493,047	456,358	
NJ 1998 (5/18/99)		5,510,385	5,135,132	375,253	
ACERTRET 4/9/07					

*State buildings refer to structures owned or constructed by the State or its instrumentalities. See Exhibit A on page 2 for an explanation of terms.

Table 11a

**Dollar Amount of Construction Authorized by Building Permits
New Jersey Counties: 2006**

County	Region	Total	Residential	Nonresidential	Rank
ATLANTIC	SOUTH	\$1,001,554,778	\$343,817,460	\$657,737,318	9
BERGEN	NORTH	1,738,433,433	1,014,526,295	723,907,138	1
BURLINGTON	SOUTH	602,245,107	266,638,211	335,606,896	11
CAMDEN	SOUTH	569,009,350	252,070,610	316,938,740	13
CAPE MAY	SOUTH	475,262,110	408,724,194	66,537,916	12
CUMBERLAND	SOUTH	212,736,542	97,098,112	115,638,430	20
ESSEX	NORTH	1,125,230,236	640,882,847	484,347,389	7
GLOUCESTER	SOUTH	419,045,005	247,053,460	171,991,545	15
HUDSON	NORTH	1,119,630,263	759,357,167	360,273,096	2
HUNTERDON	CENTRAL	237,092,838	144,546,479	92,546,359	17
MERCER	CENTRAL	654,619,538	241,424,949	413,194,589	10
MIDDLESEX	CENTRAL	1,314,310,152	479,128,493	835,181,659	5
MONMOUTH	CENTRAL	1,239,485,234	760,158,081	479,327,153	3
MORRIS	NORTH	1,219,920,990	627,655,764	592,265,226	4
OCEAN	CENTRAL	925,938,211	659,832,743	266,105,468	6
PASSAIC	NORTH	465,553,067	252,904,208	212,648,859	16
SALEM	SOUTH	81,317,238	52,277,789	29,039,449	21
SOMERSET	CENTRAL	597,123,601	285,539,122	311,584,479	8
SUSSEX	NORTH	283,613,366	198,008,660	85,604,706	18
UNION	NORTH	878,211,617	513,011,978	365,199,639	14
WARREN	NORTH	158,044,798	73,046,844	84,997,954	19
STATE BUILDINGS*		356,730,481	3,182,283	353,548,198	
NEW JERSEY		\$15,675,107,955	\$8,320,885,749	\$7,354,222,206	
NJ 2005 (5/8/06)		\$15,397,507,147	\$9,127,194,950	\$6,270,312,197	
NJ 2004 (4/7/05)		\$14,274,331,850	\$7,972,659,530	\$6,301,672,320	
NJ 2003 (4/7/04)		\$12,148,747,807	\$6,674,318,674	\$5,474,429,133	
NJ 2002 (5/7/03)		\$12,079,942,099	\$6,210,486,721	\$5,869,455,378	
NJ 2001 (5/13/02)		\$12,007,456,630	\$5,756,546,492	\$6,250,910,138	
NJ 2000 (6/11/01)		\$11,387,683,514	\$5,575,603,756	\$5,812,079,758	
NJ 1999 (8/8/00)		\$10,584,167,530	\$5,377,163,097	\$5,207,004,433	
NJ 1998 (5/18/99)		\$9,396,755,517	\$4,812,845,052	\$4,583,910,465	

AWORK 4/9/07

*State buildings refer to structures owned or constructed by the State or its instrumentalities. See Exhibit A on page 2 for an explanation of terms.

Table 11b

**Dollar Amount of Construction Authorized by Building Permits
New Jersey Top Municipalities: 2006**

Rank	Municipality	County	Total	Residential	Nonresidential
1	ATLANTIC CITY	ATLANTIC	\$614,900,010	\$44,486,422	\$570,413,588
2	NEWARK CITY	ESSEX	421,116,901	193,479,953	227,636,948
3	JERSEY CITY	HUDSON	370,156,372	227,005,337	143,151,035
4	WOODBRIIDGE TWP	MIDDLESEX	226,944,804	45,524,458	181,420,346
5	HOBOKEN CITY	HUDSON	225,012,224	208,489,553	16,522,671
6	PARAMUS BORO	BERGEN	184,992,410	35,580,902	149,411,508
7	CAMDEN CITY	CAMDEN	161,339,497	31,448,113	129,891,384
8	TOMS RIVER TWP	OCEAN	155,546,121	86,020,113	69,526,008
9	WEST NEW YORK TOWN	HUDSON	141,261,773	129,713,640	11,548,133
10	EAST BRUNSWICK TWP	MIDDLESEX	137,340,651	23,109,055	114,231,596
11	MONROE TWP	MIDDLESEX	135,196,585	105,650,783	29,545,802
12	WAYNE TWP	PASSAIC	132,210,450	40,746,790	91,463,660
13	BRIDGEWATER TWP	SOMERSET	129,806,478	53,077,285	76,729,193
14	SOUTH BRUNSWICK TWP	MIDDLESEX	128,188,106	34,433,186	93,754,920
15	HAMILTON TWP	MERCER	122,863,758	42,975,155	79,888,603
16	NEPTUNE TWP	MONMOUTH	118,924,071	19,179,401	99,744,670
17	BERNARDS TWP	SOMERSET	115,139,409	33,751,111	81,388,298
18	ELIZABETH CITY	UNION	115,012,708	74,748,466	40,264,242
19	RAHWAY CITY	UNION	111,985,082	67,301,282	44,683,800
20	MORRISTOWN TOWN	MORRIS	110,125,758	67,252,276	42,873,482
	TOP MUNICIPALITIES		3,858,063,168	1,563,973,281	2,294,089,887
	NEW JERSEY		\$15,675,107,955	\$8,320,885,749	\$7,354,222,206
	TOP AS % OF STATE		24.6%	18.8%	31.2%

AWORK2 4/9/07

Estimated Dollar Amount of Construction Authorized by Building Permits 2006

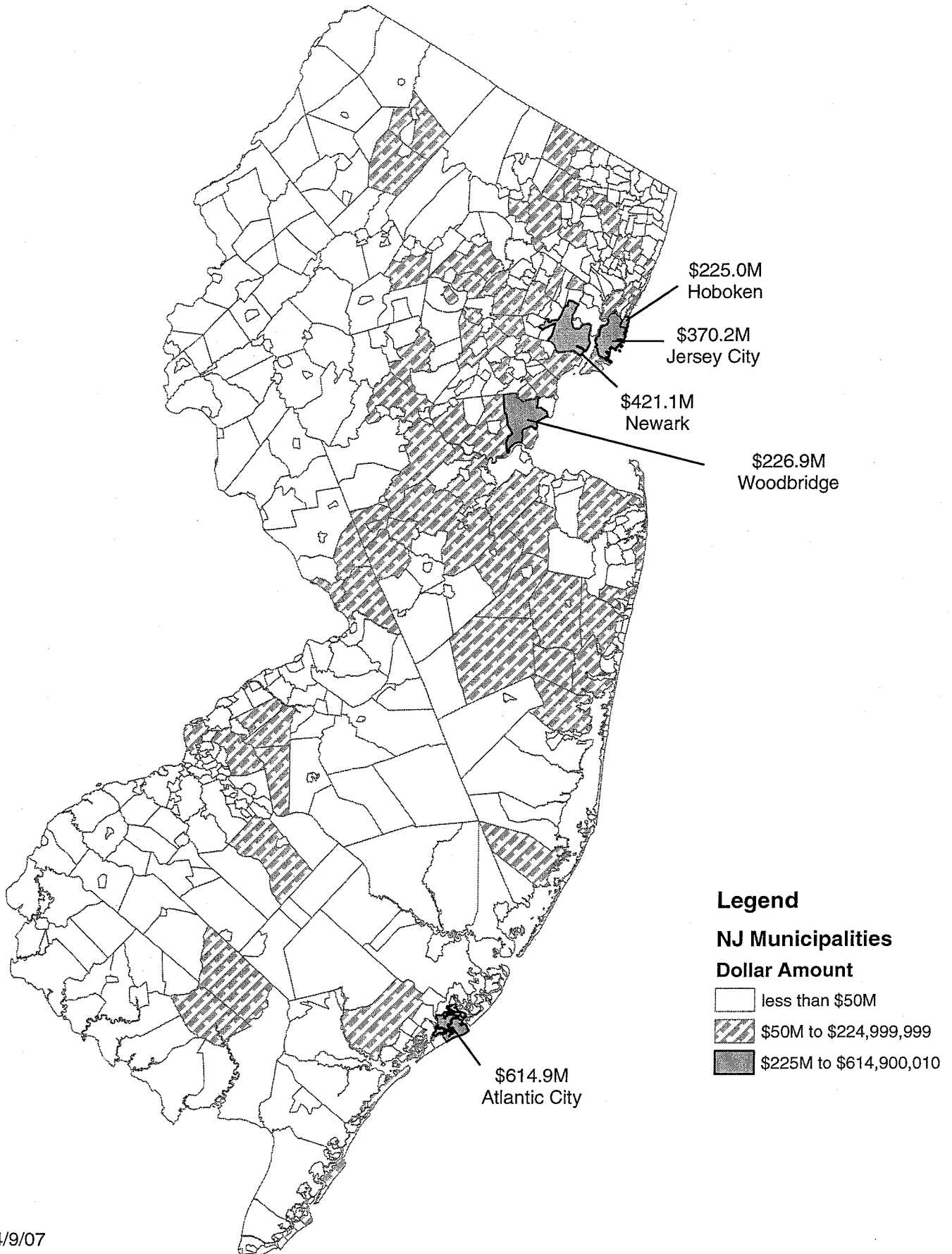


Table 12

Dollar Amount of Construction Authorized by Building Permits by Use Group New Jersey: 2006			
Use Group	Permits	Estimated Construction Costs	Square Feet
RESIDENTIAL	353,784	\$8,320,885,749	92,145,824
1 & 2 Family	332,971	6,599,318,641	73,553,506
Multifamily	20,813	1,721,567,108	18,592,318
NONRESIDENTIAL	94,825	\$7,354,222,206	47,807,864
Hotels, Motels, Guest Houses	1,211	434,815,091	3,794,790
Assembly	6,180	955,225,660	3,529,740
Business	27,625	2,380,871,961	11,113,555
Educational	2,543	1,062,322,180	2,407,465
Hazardous Use	69	13,270,117	48,101
Industrial	923	175,344,680	1,000,158
Institutional	1,080	473,046,990	2,063,473
Retail	4,974	627,514,276	5,186,662
Storage	2,393	635,209,685	14,658,897
Signs, Fences, Miscellaneous	47,827	596,601,566	4,005,023
NEW JERSEY	448,609	\$15,675,107,955	139,953,688
NJ 2005 <small>(5/8/06)</small>	451,922	\$15,397,507,147	168,148,516
NJ 2004 <small>(4/7/05)</small>	444,309	\$14,274,331,850	172,899,622
NJ 2003 <small>(4/7/04)</small>	410,339	\$12,148,747,807	144,962,810
NJ 2002 <small>(5/7/03)</small>	392,901	\$12,079,942,099	138,196,562
NJ 2001 <small>(5/13/02)</small>	370,327	\$12,007,456,630	164,286,235
NJ 2000 <small>(6/11/01)</small>	359,016	\$11,387,683,514	159,284,903
NJ 1999 <small>(8/8/00)</small>	349,913	\$10,584,167,530	146,943,970
NJ 1998 <small>(5/18/99)</small>	348,794	\$9,396,755,517	140,340,505
AUSEGROUP 4/9/07			

Table 13**Dollar Amount of Construction Authorized by Building Permits
by Permit Type and Year**

Year	Total	New Construction	Additions	Alterations
1995	\$6,244,161,849	\$3,200,027,879	\$681,990,177	\$2,362,143,793
1996	\$7,028,424,990	\$3,725,240,082	\$727,183,361	\$2,576,001,547
1997	\$8,346,533,114	\$4,549,229,096	\$951,959,980	\$2,845,344,038
1998	\$9,396,755,517	\$5,308,193,413	\$1,011,107,698	\$3,077,454,406
1999	\$10,584,167,530	\$6,077,922,414	\$1,137,672,723	\$3,368,572,393
2000	\$11,387,683,514	\$6,347,401,478	\$1,214,855,819	\$3,825,426,217
2001	\$12,007,456,630	\$6,821,250,336	\$1,579,284,794	\$3,606,921,500
2002	\$12,079,942,099	\$6,303,134,347	\$1,711,197,266	\$4,065,610,486
2003	\$12,148,747,807	\$6,300,043,004	\$1,979,797,826	\$3,868,906,977
2004	\$14,274,331,850	\$7,483,785,506	\$2,245,519,758	\$4,545,026,586
2005	\$15,397,507,147	\$8,177,824,881	\$2,150,853,504	\$5,068,828,762
2006	\$15,675,107,955	\$7,312,085,977	\$2,454,929,331	\$5,908,092,647

APARTIC 4/9/07

Table 14a

Average and Median Price of New Houses Issued a Warranty New Jersey Counties: 2006

County	Region	Number of Units	Total Sale Prices	Average Sale Price	Median Sale Price	Average Sale Price Rank	Median Sale Price Rank
ATLANTIC	SOUTH	1,499	\$587,777,155	\$392,113	\$330,721	16	17
BERGEN	NORTH	1,172	914,571,204	780,351	578,500	2	3
BURLINGTON	SOUTH	1,055	453,035,278	429,417	343,875	15	15
CAMDEN	SOUTH	816	299,661,077	367,232	337,870	18	16
CAPE MAY	SOUTH	1,672	970,493,971	580,439	485,000	6	5
CUMBERLAND	SOUTH	407	119,190,434	292,851	287,753	21	20
ESSEX	NORTH	1,075	498,404,880	463,632	364,865	11	14
GLOUCESTER	SOUTH	1,510	529,121,907	350,412	317,990	19	18
HUDSON	NORTH	1,718	822,902,388	478,989	443,704	10	7
HUNTERDON	CENTRAL	253	184,835,216	730,574	715,000	3	1
MERCER	CENTRAL	871	421,740,209	484,202	424,397	9	9
MIDDLESEX	CENTRAL	2,061	1,049,127,832	509,038	457,084	8	6
MONMOUTH	CENTRAL	1,891	1,246,783,646	659,325	541,250	4	4
MORRIS	NORTH	775	613,987,165	792,242	649,000	1	2
OCEAN	CENTRAL	2,890	1,252,190,327	433,284	395,342	13	12
PASSAIC	NORTH	687	297,030,037	432,358	398,355	14	11
SALEM	SOUTH	149	49,221,042	330,343	279,860	20	21
SOMERSET	CENTRAL	720	450,658,220	625,914	442,150	5	8
SUSSEX	NORTH	579	259,881,274	448,845	400,000	12	10
UNION	NORTH	619	322,265,500	520,623	395,000	7	13
WARREN	NORTH	278	105,438,276	379,274	289,272	17	19
NEW JERSEY		22,697	\$11,448,317,038	\$504,398	\$413,825		

ACENREG 4/9/07

NOTE: This table is based on prices as reported on new home warranties submitted to the New Jersey Department of Community Affairs by new home warranty insurers. Most of the new housing built in the State must have a warranty. The exceptions are dwellings built for lease and those built by homeowners who act as their own general contractor.

Table 14b

Average and Median Price of New Houses Issued a Warranty New Jersey Counties: First Quarter 2006

County	Region	Number of Units	Total Sale Prices	Average Sale Price	Median Sale Price	Average Sale Price Rank	Median Sale Price Rank
ATLANTIC	SOUTH	343	\$128,248,311	\$373,902	\$309,575	17	18
BERGEN	NORTH	316	238,292,059	754,089	525,000	2	4
BURLINGTON	SOUTH	265	110,277,949	416,143	356,690	14	13
CAMDEN	SOUTH	194	68,344,514	352,291	336,351	18	15
CAPE MAY	SOUTH	311	183,773,570	590,912	510,000	5	5
CUMBERLAND	SOUTH	69	18,716,316	271,251	260,995	21	20
ESSEX	NORTH	243	103,494,609	425,904	326,820	13	16
GLOUCESTER	SOUTH	352	115,620,681	328,468	309,100	19	19
HUDSON	NORTH	387	196,284,393	507,195	457,637	8	7
HUNTERDON	CENTRAL	52	32,759,080	629,982	678,197	4	1
MERCER	CENTRAL	221	96,466,343	436,499	405,560	11	11
MIDDLESEX	CENTRAL	468	237,915,473	508,366	458,529	7	6
MONMOUTH	CENTRAL	479	310,024,300	647,232	540,000	3	3
MORRIS	NORTH	150	117,777,739	785,185	640,000	1	2
OCEAN	CENTRAL	686	294,923,771	429,918	394,178	12	12
PASSAIC	NORTH	146	56,836,520	389,291	355,011	16	14
SALEM	SOUTH	35	10,578,702	302,249	234,900	20	21
SOMERSET	CENTRAL	162	95,126,022	587,198	449,097	6	8
SUSSEX	NORTH	89	42,980,840	482,931	439,000	10	9
UNION	NORTH	172	84,421,656	490,824	310,000	9	17
WARREN	NORTH	80	32,249,746	403,122	415,995	15	10
NEW JERSEY		5,220	\$2,575,112,594	\$493,317	\$409,365		

ACENREG1 4/9/07

NOTE: This table is based on prices as reported on new home warranties submitted to the New Jersey Department of Community Affairs by new home warranty insurers. Most of the new housing built in the State must have a warranty. The exceptions are dwellings built for lease and those built by homeowners who act as their own general contractor.

Table 14c

Average and Median Price of New Houses Issued a Warranty New Jersey Counties: Second Quarter 2006

County	Region	Number of Units	Total Sale Prices	Average Sale Price	Median Sale Price	Average Sale Price Rank	Median Sale Price Rank
ATLANTIC	SOUTH	428	\$175,165,688	\$409,266	\$341,602	17	17
BERGEN	NORTH	273	205,450,289	752,565	640,000	2	3
BURLINGTON	SOUTH	328	145,046,789	442,216	344,853	14	16
CAMDEN	SOUTH	192	71,321,962	371,469	340,020	18	18
CAPE MAY	SOUTH	574	346,213,429	603,159	500,000	6	5
CUMBERLAND	SOUTH	102	29,524,549	289,456	281,689	21	20
ESSEX	NORTH	281	142,428,534	506,863	375,000	9	15
GLOUCESTER	SOUTH	435	147,909,952	340,023	311,215	19	19
HUDSON	NORTH	414	200,959,957	485,411	441,460	11	10
HUNTERDON	CENTRAL	97	71,387,195	735,950	696,717	3	1
MERCER	CENTRAL	235	114,591,050	487,621	424,911	10	11
MIDDLESEX	CENTRAL	632	320,658,641	507,371	460,378	8	7
MONMOUTH	CENTRAL	518	365,536,000	705,668	582,625	5	4
MORRIS	NORTH	211	190,067,653	900,795	685,700	1	2
OCEAN	CENTRAL	833	376,066,058	451,460	401,410	13	12
PASSAIC	NORTH	206	86,519,266	419,996	380,338	16	14
SALEM	SOUTH	39	12,325,257	316,032	270,109	20	21
SOMERSET	CENTRAL	161	116,039,557	720,743	468,388	4	6
SUSSEX	NORTH	155	66,765,044	430,742	389,205	15	13
UNION	NORTH	145	84,766,209	584,595	455,000	7	9
WARREN	NORTH	60	28,058,128	467,635	459,500	12	8
NEW JERSEY		6,319	\$3,296,801,207	\$521,728	\$425,000		

ACENREG2 4/9/07

NOTE:

This table is based on prices as reported on new home warranties submitted to the New Jersey Department of Community Affairs by new home warranty insurers. Most of the new housing built in the State must have a warranty. The exceptions are dwellings built for lease and those built by homeowners who act as their own general contractor.

Table 14d

Average and Median Price of New Houses Issued a Warranty New Jersey Counties: Third Quarter 2006

County	Region	Number of Units	Total Sale Prices	Average Sale Price	Median Sale Price	Average Sale Price Rank	Median Sale Price Rank
ATLANTIC	SOUTH	407	\$153,836,290	\$377,976	\$327,659	17	18
BERGEN	NORTH	298	241,245,353	809,548	547,511	1	3
BURLINGTON	SOUTH	245	103,677,442	423,173	329,790	16	17
CAMDEN	SOUTH	208	77,212,101	371,212	339,645	18	15
CAPE MAY	SOUTH	428	233,118,098	544,668	417,373	6	8
CUMBERLAND	SOUTH	100	29,457,133	294,571	292,656	21	20
ESSEX	NORTH	302	151,908,821	503,009	381,468	9	14
GLOUCESTER	SOUTH	445	159,856,175	359,227	318,321	19	19
HUDSON	NORTH	362	168,403,816	465,204	400,000	10	10
HUNTERDON	CENTRAL	45	34,973,155	777,181	804,385	2	1
MERCER	CENTRAL	215	109,285,471	508,305	436,955	7	7
MIDDLESEX	CENTRAL	595	300,865,510	505,656	452,484	8	5
MONMOUTH	CENTRAL	475	300,242,789	632,090	541,250	4	4
MORRIS	NORTH	242	184,701,053	763,227	601,598	3	2
OCEAN	CENTRAL	678	290,248,223	428,095	398,025	15	12
PASSAIC	NORTH	147	63,430,861	431,502	405,050	14	9
SALEM	SOUTH	37	11,838,815	319,968	275,000	20	21
SOMERSET	CENTRAL	217	136,421,243	628,669	450,400	5	6
SUSSEX	NORTH	173	78,512,029	453,827	400,000	12	11
UNION	NORTH	169	77,086,749	456,135	330,000	11	16
WARREN	NORTH	39	17,004,035	436,001	389,900	13	13
NEW JERSEY		5,827	\$2,923,325,162	\$501,686	\$405,150		

ACENREG3 4/9/07

NOTE: This table is based on prices as reported on new home warranties submitted to the New Jersey Department of Community Affairs by new home warranty insurers. Most of the new housing built in the State must have a warranty. The exceptions are dwellings built for lease and those built by homeowners who act as their own general contractor.

Table 14e

Average and Median Price of New Houses Issued a Warranty New Jersey Counties: Fourth Quarter 2006

County	Region	Number of Units	Total Sale Prices	Average Sale Price	Median Sale Price	Average Sale Price Rank	Median Sale Price Rank
ATLANTIC	SOUTH	321	\$130,526,866	\$406,626	\$348,650	15	15
BERGEN	NORTH	285	229,583,503	805,556	587,663	1	2
BURLINGTON	SOUTH	217	94,033,098	433,332	350,447	13	14
CAMDEN	SOUTH	222	82,782,500	372,894	334,370	19	17
CAPE MAY	SOUTH	359	207,388,874	577,685	439,000	5	10
CUMBERLAND	SOUTH	136	41,492,436	305,091	299,617	20	20
ESSEX	NORTH	249	100,572,916	403,907	325,000	16	18
GLOUCESTER	SOUTH	278	105,735,099	380,342	347,817	18	16
HUDSON	NORTH	555	257,254,222	463,521	450,306	11	8
HUNTERDON	CENTRAL	59	45,715,786	774,844	805,000	2	1
MERCER	CENTRAL	200	101,397,345	506,987	439,471	9	9
MIDDLESEX	CENTRAL	366	189,688,208	518,274	463,217	8	5
MONMOUTH	CENTRAL	419	270,980,557	646,732	518,128	4	4
MORRIS	NORTH	172	121,440,720	706,051	520,000	3	3
OCEAN	CENTRAL	693	290,952,275	419,845	381,445	14	13
PASSAIC	NORTH	188	90,243,390	480,018	453,617	10	7
SALEM	SOUTH	38	14,478,268	381,007	313,935	17	19
SOMERSET	CENTRAL	180	103,071,398	572,619	416,982	6	11
SUSSEX	NORTH	162	71,623,361	442,120	413,395	12	12
UNION	NORTH	133	75,990,886	571,360	457,500	7	6
WARREN	NORTH	99	28,126,367	284,105	225,450	21	21
NEW JERSEY		5,331	\$2,653,078,075	\$497,670	\$413,500		

ACENREG4 4/9/07

NOTE: This table is based on prices as reported on new home warranties submitted to the New Jersey Department of Community Affairs by new home warranty insurers. Most of the new housing built in the State must have a warranty. The exceptions are dwellings built for lease and those built by homeowners who act as their own general contractor.

MUNICIPAL SUMMARY DATA, 2006

AREA NAME	AUTHORIZED HSG UNITS		AUTHORIZED HSG UNITS (CENSUS DEFINITIONS)	HSG UNITS CERTIFIED	DEMO-LITIONS	OFFICE SQ FT AUTHORIZED BY BUILDING PERMITS		RETAIL SQ FT AUTHORIZED BY BUILDING PERMITS		RESIDENTIAL (\$ AMOUNT)		NONRESIDENTIAL (\$ AMOUNT)	
	HSG UNITS	NEW CONSTR ONLY				AUTHORIZED HSG UNITS ONLY	AUTHORIZED HSG UNITS	AUTHORIZED BY BUILDING PERMITS	AUTHORIZED BY BUILDING PERMITS	NEW CON-STRUCTION	ALTERATIONS & ADDITIONS	NEW CON-STRUCTION	ALTERATIONS & ADDITIONS
Atlantic	1,910	1,876	1,893	1,646	278	264,155	187,482	\$255,992,525	\$87,824,935	\$264,071,853	\$393,665,465		
Bergen	1,689	1,605	2,164	1,591	736	897,543	194,868	439,132,211	575,394,084	153,243,293	570,663,845		
Burlington	1,157	1,107	2,784	1,199	182	770,722	159,087	145,210,952	121,427,259	117,079,570	218,527,326		
Camden	1,420	1,208	1,183	1,026	471	424,278	620,627	124,524,407	127,546,207	92,136,957	224,801,783		
Cape May	1,661	1,600	1,580	1,506	626	79,758	194,680	332,486,817	76,237,377	25,366,187	41,171,729		
Cumberland	683	600	737	553	127	122,448	487,449	75,020,251	22,077,861	88,224,259	27,414,171		
Essex	3,112	3,102	3,284	2,480	552	615,108	34,276	354,116,417	286,766,430	71,438,100	412,909,289		
Gloucester	1,292	1,167	1,141	1,684	112	226,933	37,153	183,483,852	63,569,608	56,521,694	115,469,851		
Hudson	4,489	4,042	4,275	2,151	634	106,542	239,486	496,550,125	262,807,042	99,398,974	260,874,122		
Hunterdon	427	422	350	328	63	234,858	32,859	72,693,820	71,852,659	40,527,824	52,018,535		
Mercer	901	889	847	1,469	136	818,421	106,437	102,989,415	138,435,534	182,758,392	230,436,197		
Middlesex	2,475	2,363	2,567	2,034	191	1,224,219	505,743	252,844,386	226,284,107	213,386,801	621,794,858		
Monmouth	2,009	1,980	2,820	1,898	450	937,008	197,248	401,971,195	358,186,886	238,074,501	241,252,652		
Morris	1,364	1,347	1,670	1,379	335	1,538,458	215,553	297,386,469	330,269,295	210,543,176	381,722,050		
Ocean	2,671	2,598	2,114	3,441	696	807,899	422,163	441,622,029	218,210,714	104,484,771	161,620,697		
Passaic	1,138	948	850	824	124	449,734	240,201	105,057,983	147,846,225	115,813,864	96,834,995		
Salem	350	344	298	263	56	15,414	6,889	38,985,818	13,291,971	12,918,102	16,121,347		
Somerset	746	736	1,058	889	108	346,014	166,282	136,580,304	148,958,818	70,933,648	240,650,831		
Sussex	527	519	603	703	35	199,738	11,119	131,091,527	66,917,133	41,279,349	44,325,357		
Union	1,643	1,605	1,593	1,171	480	388,660	150,010	224,331,435	288,680,543	187,897,845	177,301,794		
Warren	384	382	512	324	51	107,775	42,577	46,471,198	26,575,646	18,721,474	66,276,480		
State buildings	2	0	0	5	17	537,870	934,473	1,184,127	1,998,156	247,538,080	106,010,118		
New Jersey	32,050	30,440	34,323	28,564	6,460	11,113,555	5,186,662	\$4,659,727,263	\$3,661,158,486	\$2,652,358,714	\$4,701,863,492		

Atlantic County

Absecon City	65	65	68	84	1	10,327	0	\$6,606,660	\$2,137,476	\$4,845,000	\$1,054,369
Atlantic City	281	278	272	125	23	6,130	140,488	34,623,372	9,863,050	232,470,155	337,943,433
Brigantine City	79	79	78	56	58	341	0	24,253,933	9,839,513	152,709	803,290
Buena Borough	15	15	8	3	9	12,666	0	2,754,200	988,766	628,059	385,625
Buena Vista Township	9	9	9	6	2	0	0	1,209,675	921,523	359,439	637,026
Corbin City	1	1	2	0	5	0	0	49,800	139,133	40,000	75,800
Egg Harbor City	8	8	14	4	0	0	0	982,450	1,039,359	384,362	1,233,036
Egg Harbor Township	625	617	616	548	36	42,669	19,744	60,609,824	7,946,619	11,714,952	12,093,378
Estell Manor City	5	5	10	1	1	0	0	629,850	223,475	98,865	143,168
Folsom Borough	4	4	3	0	1	1,308	0	489,000	578,513	54,664	183,741
Galloway Township	228	228	226	221	12	61,117	0	24,358,255	6,077,756	4,213,100	5,984,080
Hamilton Township	213	211	192	264	5	21,233	0	22,428,186	3,209,541	1,392,776	10,129,662
Hammonton Township	85	80	81	85	4	5,382	22,000	11,343,357	4,562,487	2,499,860	2,933,862
Linwood City	13	12	15	24	9	0	0	4,221,454	4,607,396	37,300	2,721,262
Longport City	36	23	23	24	19	0	0	9,586,650	2,860,478	0	17,650
Margate City	92	92	97	63	59	6,223	0	26,553,057	14,558,234	835,140	1,016,591
Mullica City	27	27	29	20	4	360	0	3,153,562	1,276,811	483,287	772,258
Norfield City	17	15	26	15	5	36,690	1,656	2,068,649	3,504,332	1,035,100	3,640,921
Pleasantville City	72	72	80	80	17	55,496	0	6,976,334	2,488,740	2,736,150	6,295,906

MUNICIPAL SUMMARY DATA, 2006

AREA NAME	AUTHORIZED HSG UNITS		AUTHORIZED HSG UNITS (CENSUS DEFINITIONS)	HSG UNITS CERTIFIED	DEMO-LITIONS	OFFICE SQ FT AUTHORIZED BY BUILDING PERMITS		RETAIL SQ FT AUTHORIZED BY BUILDING PERMITS		RESIDENTIAL (\$ AMOUNT)			NONRESIDENTIAL (\$ AMOUNT)		
	HSG UNITS	NEW CONSTR ONLY				BY BUILDING PERMITS	BY BUILDING PERMITS	NEW CON-STRUCTION	ADDITIONS & ALTERATIONS	NEW CON-STRUCTION	ADDITIONS & ALTERATIONS	NEW CON-STRUCTION	ADDITIONS & ALTERATIONS	ADDITIONS & ALTERATIONS	
Port Republic City	2	2	4	4	0	0	0	0	0	1,468,700	434,877	0	0	0	
Somers Point City	29	29	35	14	6	4,213	3,594	0	0	4,986,775	4,332,083	0	0	5,549,557	
Ventnor City	0	0	2	5	0	0	0	0	0	6,464,290	5,959,815	0	0	0	
Weymouth Township	4	4	3	0	2	0	0	0	0	174,492	274,958	90,935	50,850	0	
Bergen County															
Atlentide Borough	0	0	1	1	2	0	0	0	0	1,526,049	9,999,433	84,001	4,009,111	0	
Alpine Borough	14	14	20	21	8	0	0	0	0	16,858,600	3,934,271	33,100	1,130,196	0	
Bergenfield Borough	17	17	17	13	10	4,244	0	0	0	5,286,785	11,523,588	17,200	3,161,370	0	
Bogota Borough	3	3	7	1	2	0	0	0	0	476,150	1,834,810	39,700	632,275	0	
Carlstadt Borough	21	21	35	0	7	8,304	19,646	0	0	2,151,500	1,166,633	1,065,765	18,018,705	0	
Cliffside Park Borough	118	118	98	55	21	0	0	0	0	13,783,450	5,431,324	0	1,668,885	0	
Closter Borough	28	28	30	31	22	0	0	0	0	13,263,451	5,382,106	350,750	1,736,875	0	
Cresskill Borough	13	13	90	92	13	0	0	0	0	9,999,593	9,394,226	76,000	6,520,626	0	
Demarest Borough	31	31	33	16	10	59,828	0	0	0	12,230,201	4,753,462	4,463,484	273,660	0	
Dumont Borough	8	4	6	1	9	0	0	0	0	873,650	7,461,609	0	12,142,038	0	
Elmwood Park Borough	129	129	101	0	0	3,640	0	0	0	5,636,026	9,086,970	0	1,452,475	0	
East Rutherford Borough	1	1	1	109	4	0	0	0	0	351,000	1,695,935	3,219,948	12,700,673	0	
Edgewater Borough	56	56	55	8	19	0	0	0	0	27,455,905	9,951,396	2,542,380	2,790,584	0	
Emerson Borough	43	43	48	16	3	0	36,643	0	0	5,833,700	4,518,521	2,797,501	2,175,153	0	
Englewood City	10	10	238	303	7	1,875	0	0	0	12,872,841	19,321,322	2,814,980	13,973,515	0	
Englewood Cliffs Borough	23	22	25	16	21	26,500	0	0	0	13,274,000	3,203,019	5,800,000	4,769,795	0	
Fair Lawn Borough	7	6	12	19	26	40,642	0	0	0	1,573,708	18,528,572	814,903	7,517,389	0	
Fairview Borough	32	32	48	41	12	0	0	0	0	4,359,604	1,824,308	0	1,570,939	0	
Fort Lee Borough	54	54	33	34	28	22,113	42,905	0	0	14,007,296	18,923,325	10,252,001	10,195,682	0	
Franklin Lakes Borough	140	139	136	27	31	2,738	0	0	0	33,432,570	17,744,225	6,801,250	2,997,708	0	
Garfield City	12	12	13	12	7	7,824	0	0	0	1,283,058	4,628,708	905,400	5,567,117	0	
Glen Rock Borough	5	5	6	2	2	3,747	1,374	0	0	1,555,301	16,073,716	278,300	2,674,786	0	
Hackensack City	64	10	14	44	27	108,315	360	0	0	669,950	10,342,769	5,444,062	43,382,248	0	
Harrington Park Borough	9	9	14	17	14	0	0	0	0	2,862,381	4,524,661	0	172,938	0	
Hasbrouck Heights Borough	15	14	23	18	13	3,669	0	0	0	2,591,300	6,843,353	635,600	3,640,003	0	
Haworth Borough	9	7	11	8	9	0	0	0	0	3,418,085	5,108,942	0	235,960	0	
Hillsdale Borough	6	6	4	11	5	0	0	0	0	1,855,172	8,943,550	228,800	1,481,859	0	
Ho-Ho-Kus Borough	4	4	9	5	5	0	0	0	0	1,228,907	7,661,081	61,050	170,771	0	
Leonia Borough	3	3	3	0	1	0	0	0	0	854,000	3,384,462	60,000	1,577,510	0	
Little Ferry Borough	2	2	1	2	1	11,000	0	0	0	410,000	2,514,255	300,000	2,001,800	0	
Lodi Borough	26	26	17	25	10	89,293	0	0	0	2,900,051	5,609,825	10,959,897	2,453,779	0	
Lyndhurst Township	7	7	20	4	4	27,373	0	0	0	5,846,183	10,558,465	4,830,765	13,316,144	0	
Mahwah Township	32	32	32	23	9	48,309	0	0	0	18,253,676	16,771,698	13,852,359	12,869,899	0	
Maywood Borough	0	0	2	0	1	0	0	0	0	583,250	4,606,416	2,990,000	14,479,754	0	
Midland Park Borough	8	8	9	3	5	0	0	0	0	1,503,600	3,693,275	0	3,142,208	0	
Montvale Borough	49	49	54	14	6	1,440	0	0	0	9,179,200	7,718,040	0	28,533,489	0	

MUNICIPAL SUMMARY DATA, 2006

AREA NAME	AUTHORIZED HSG UNITS		HSG UNITS (CENSUS DEFINITIONS)	HSG UNITS CERTIFIED	DEMO-LITIONS	OFFICE SQ. FT. AUTHORIZED BY BUILDING PERMITS		RETAIL SQ. FT. AUTHORIZED BY BUILDING PERMITS		RESIDENTIAL (\$ AMOUNT)		NONRESIDENTIAL (\$ AMOUNT)	
	HSG UNITS	NEW CONSTR ONLY				AUTHORIZED	AUTHORIZED	NEW CON-STRUC-TION	ADDITIONS & ALTERATIONS	NEW CON-STRUC-TION	ADDITIONS & ALTERATIONS	NEW CON-STRUC-TION	ADDITIONS & ALTERATIONS
Moonachie Borough	2		5	4	3	0	0	0	0	312,700	904,231	3,417,900	5,170,287
New Milford Borough	20		25	14	9	0	0	0	0	3,979,050	7,696,558	0	1,049,846
North Arlington Borough	0		0	5	2	0	0	0	0	202,600	4,219,024	0	610,241
Northvale Borough	18		21	4	5	18,692	0	0	0	2,869,100	2,510,177	2,428,570	3,288,564
Norwood Borough	10		15	6	9	12,834	0	0	0	2,362,012	4,003,406	416,400	6,378,813
Oakland Borough	8		17	1	23	0	768	0	0	2,079,300	15,020,322	1,556,260	5,920,144
Old Tappan Borough	32		35	41	26	0	0	0	0	15,959,850	8,720,292	0	927,296
Oradell Borough	5		5	1	4	490	0	0	0	2,267,951	9,314,294	2,584,848	10,973,125
Pailsades Park Borough	187		132	187	52	2,000	0	0	0	27,245,950	3,002,393	1,000,000	3,229,544
Paramus Borough	42		40	40	37	96,048	65,377	0	0	17,965,771	17,615,131	11,667,000	137,744,508
Park Ridge Borough	59		51	15	5	0	0	0	0	6,749,500	7,394,437	80,000	1,318,521
Ramsey Borough	12		36	13	8	9,377	22,259	0	0	4,583,250	12,260,418	2,747,400	8,287,085
Ridgefield Borough	13		28	12	12	22,766	0	0	0	2,843,500	3,495,907	1,020,000	3,914,313
Ridgefield Park Village	4		4	4	0	3,030	0	0	0	617,000	3,473,061	0	3,380,442
Ridgewood Village	11		34	7	9	6,788	0	0	0	4,975,676	38,733,201	19,476,072	5,806,911
River Edge Borough	3		13	2	3	0	0	0	0	618,400	8,205,452	0	14,461,954
River Vale Township	6		22	10	11	11,405	0	0	0	1,864,750	9,407,336	704,010	1,834,593
Rochelle Park Township	10		74	2	0	0	0	0	0	1,266,000	3,955,222	0	1,610,685
Rockleigh Borough	0		0	0	0	4,026	0	0	0	0	0	108,000	4,580,250
Rutherford Borough	18		14	12	12	0	0	0	0	4,366,402	11,165,703	3,966,690	8,719,777
Saddle Brook Township	16		73	80	11	0	0	0	0	2,240,638	6,601,995	6,500	3,415,673
Saddle River Borough	16		21	4	14	0	0	0	0	18,799,200	8,703,775	174,700	1,387,750
South Hackensack Twp	2		1	4	0	0	0	0	0	600,000	560,769	6,840,575	3,471,566
Teaneck Township	17		9	13	14	19,963	0	0	0	6,053,451	23,793,754	5,665,200	21,061,707
Tenafly Borough	53		51	41	26	3,669	0	0	0	18,507,301	13,998,436	818,350	5,425,069
Teterboro Borough	0		0	0	0	0	0	0	0	0	0	0	6,939,164
Upper Saddle River Borou	27		27	14	24	0	0	0	0	15,275,731	11,342,966	3,108,000	1,290,692
Waldwick Borough	3		13	6	4	2,148	0	0	0	554,650	5,498,453	526,350	2,129,150
Wallington Borough	45		43	5	1	0	0	0	0	3,790,000	1,657,884	0	976,400
Washington Township	2		21	3	0	0	0	0	0	1,316,500	11,874,717	0	737,500
Westwood Borough	6		6	3	5	0	0	0	0	1,232,360	5,353,395	21,000	2,449,172
Woodcliff Lake Borough	12		25	26	6	206,740	0	0	0	4,417,570	6,143,441	2,155,500	17,377,558
Wood-Ridge Borough	14		13	6	9	900	0	0	0	3,575,055	3,132,606	143,002	449,442
Wyckoff Township	17		24	14	18	5,813	5,536	0	0	9,400,800	20,973,057	891,770	29,208,184
Burlington County													
Bass River Township	12		8	0	4	0	0	0	0	987,901	391,935	101,750	667,270
Beverly City	26		1	3	2	0	0	0	0	0	1,991,411	181,750	87,085
Bordentown City	4		0	1	5	0	0	0	0	0	1,074,593	1,034,644	276,121
Bordentown Township	1		1	13	1	23,340	27,196	0	0	178,000	4,482,226	3,751,810	13,294,241
Burlington City	9		6	6	8	406	4,682	0	0	673,950	2,274,362	858,741	5,642,572
Burlington Township	36		40	19	2	16,352	0	0	0	4,406,265	5,888,818	1,495,654	3,756,828

MUNICIPAL SUMMARY DATA, 2006

AREA NAME	AUTHORIZED HSG UNITS		HSG UNITS (CENSUS DEFINITIONS)	HSG UNITS CERTIFIED	DEMO-LITIONS	OFFICE SQ FT		RESIDENTIAL (\$ AMOUNT)		NONRESIDENTIAL (\$ AMOUNT)	
	NEW CONSTR ONLY	HSG UNITS				AUTHORIZED BY BUILDING PERMITS	AUTHORIZED BY BUILDING PERMITS	NEW CON-STRUC-TION	ADDITIONS & ALTERATIONS	NEW CON-STRUC-TION	ADDITIONS & ALTERATIONS
Brooklawn Borough	0	0	0	0	0	0	0	19,000	430,908	0	615,278
Camden City	270	177	173	189	267	105,000	1,525	18,511,913	12,936,200	47,123,019	82,768,365
Cherry Hill Township	130	129	129	19	7	21,201	108,808	14,840,150	20,550,139	12,653,713	40,473,111
Clementon Borough	5	4	7	1	5	0	0	182,505	226,308	0	63,475
Chesnut Borough	4	4	9	7	4	0	0	260,300	975,536	247,550	2,689,049
Collingswood Borough	162	138	0	0	0	0	0	10,120,000	5,254,049	1,259,000	22,537,368
Gibbstown Borough	1	1	2	3	3	9,651	0	322,730	788,962	531,400	490,512
Gloucester City	20	19	18	2	71	300	0	1,173,469	1,795,874	297,300	313,838
Gloucester Township	113	25	20	143	0	51,318	510,294	898,571	12,329,016	4,748,686	10,785,575
Haddon Township	6	6	24	6	3	1,653	0	1,071,300	6,007,389	0	1,827,207
Haddonfield Borough	14	14	18	24	8	0	0	4,747,203	9,125,258	0	9,372,649
Haddon Heights Borough	3	3	3	4	1	0	0	1,028,600	12,262,655	0	6,730,100
Hirshella Borough	0	0	0	0	0	0	0	0	76,076	16,000	3,102
Laurel Springs Borough	1	1	2	1	0	0	0	193,786	737,633	6,400	118,045
Lawnside Borough	35	35	20	25	4	11,784	0	5,484,298	431,532	748,159	2,229,198
Lindenwold Borough	6	6	104	4	1	240	0	691,841	3,119,452	28,758	1,191,872
Magnolia Borough	2	2	6	6	3	0	0	95,500	972,860	45,310	1,767,961
Merchantville Borough	20	20	10	0	0	0	0	1,638,650	997,490	0	21,000
Mount Ephraim Borough	6	5	2	1	5	18,050	0	282,250	940,760	540,000	1,193,235
Oaklyn Borough	0	0	1	0	0	0	0	144,100	1,047,673	54,000	448,944
Pennsauken Township	66	65	38	13	11	47,750	0	2,360,889	6,124,004	4,077,072	10,528,796
Pine Hill Borough	11	11	36	12	6	16,601	0	849,768	1,951,115	1,682,153	587,001
Pine Valley Borough	1	0	0	24	1	0	0	0	361,100	96,400	70,950
Runnemede Borough	12	11	13	6	2	0	0	1,335,550	1,604,617	0	1,354,434
Somerdate Borough	8	8	7	3	3	0	0	819,300	897,364	0	328,989
Straford Borough	3	3	2	1	2	0	0	171,935	1,510,819	72,500	922,183
Tavistock Borough	0	0	0	0	0	0	0	0	0	0	0
Voorhees Township	75	75	74	82	9	58,806	0	10,113,067	5,472,016	5,971,243	11,515,877
Waterford Township	13	13	18	22	5	6,693	0	2,566,648	2,097,509	436,307	982,161
Winslow Township	373	373	377	372	22	55,351	0	39,098,183	5,383,646	6,522,896	4,471,776
Woodlyne Borough	1	1	1	0	0	0	0	80,300	179,424	0	461,000
Cape May County											
Avalon Borough	100	100	93	104	78	900	16,842	56,363,873	6,344,279	493,620	2,986,721
Cape May City	6	6	6	15	13	0	0	1,516,639	7,609,016	0	3,792,262
Cape May Point Borough	3	3	5	3	6	0	0	941,900	568,610	96,025	132,224
Dennis Township	12	9	13	11	3	44,810	0	1,860,000	1,598,281	2,149,195	2,229,898
Lower Township	75	75	68	68	35	11,065	6,705	17,214,576	12,979,442	3,453,380	7,522,340
Middle Township	160	122	120	211	27	4,999	64,736	17,957,954	2,153,004	4,575,203	7,977,843
North Wildwood City	308	307	308	88	45	0	768	46,683,314	4,153,587	312,000	1,455,560
Ocean City	291	287	286	442	196	5,246	57,913	71,722,674	15,965,344	5,364,711	6,522,873
Sea Isle City	142	142	149	198	85	8,243	0	28,702,448	4,884,069	2,586,879	470,982

MUNICIPAL SUMMARY DATA, 2006

AREA NAME	AUTHORIZED HSG UNITS		HSG UNITS (CENSUS DEFINITIONS)	HSG UNITS CERTIFIED	DEMO-LITIONS	OFFICE SQ. FT. AUTHORIZED BY BUILDING PERMITS		RETAIL SQ. FT. AUTHORIZED BY BUILDING PERMITS		RESIDENTIAL (\$ AMOUNT)			NONRESIDENTIAL (\$ AMOUNT)		
	HSG UNITS	NEW CONSTR ONLY				BY BUILDING PERMITS	BY BUILDING PERMITS	NEW CON-STRUCTION	ADDITIONS & ALTERATIONS	ADDITIONS & ALTERATIONS	ADDITIONS & ALTERATIONS	NEW CON-STRUCTION	ADDITIONS & ALTERATIONS		
Stone Harbor Borough	36	34	32	44	32	0	0	0	0	15,851,631	5,486,250	900,000	1,471,115		
Upper Township	33	32	22	50	4	4,495	12,150	0	0	6,775,091	6,330,334	1,980,844	1,197,028		
West Cape May Borough	8	8	7	8	8	0	0	0	0	1,995,351	1,580,276	51,300	113,305		
West Wildwood Borough	26	17	18	16	12	0	0	0	0	3,459,670	936,238	0	1,500		
Wildwood City	197	195	175	155	58	0	35,566	0	0	26,562,044	2,222,643	3,292,330	1,025,479		
Wildwood Crest Borough	245	245	260	92	23	0	0	0	0	34,633,252	3,239,438	0	1,083,705		
Woodbine Borough	19	18	18	1	1	0	0	0	0	246,400	186,566	110,700	3,188,894		
Cumberland County															
Bridgeton City	63	63	176	1	33	0	0	0	0	10,542,286	2,228,012	704,812	4,018,497		
Commercial Township	21	5	9	12	10	4,428	0	0	0	632,150	1,409,344	91,150	462,955		
Deerfield Township	16	9	16	10	1	0	0	0	0	1,302,600	750,629	837,350	188,564		
Downe Township	4	3	3	0	5	0	0	0	0	48,650	509,048	17,000	12,340		
Fairfield Township	14	6	7	5	6	1,894	0	0	0	965,588	1,060,942	180,865	266,713		
Greenwich Township	0	0	4	1	0	0	0	0	0	0	186,391	91,500	13,800		
Hopewell Township	3	3	18	17	2	0	0	0	0	609,500	838,717	749,979	399,460		
Lawrence Township	7	7	13	0	0	0	0	0	0	1,574,500	1,549,996	0	0		
Maurice River Township	13	13	14	15	2	0	0	0	0	664,410	1,217,321	818,468	236,848		
Millville City	206	206	200	168	18	12,083	462,979	0	0	19,162,115	3,207,261	34,693,693	4,978,466		
Shiloh Borough	0	0	4	1	0	0	0	0	0	0	92,080	0	8,400		
Slow Creek Township	3	3	3	5	1	0	0	0	0	605,000	311,962	150,300	58,090		
Upper Deerfield Township	70	65	57	65	8	12,570	0	0	0	11,482,079	1,020,189	1,905,704	746,343		
Vineland City	263	217	213	253	41	91,473	24,470	0	0	27,431,373	7,695,969	47,983,438	16,023,695		
Essex County															
Belleville Town	166	166	177	22	6	3,572	23,572	0	0	16,525,470	7,211,430	589,000	1,721,779		
Bloomfield Township	43	43	46	0	1	12,420	0	0	0	1,944,100	17,990,306	1,113,000	2,868,870		
Caldwell Township	6	6	5	3	6	562	0	0	0	2,675,137	3,663,227	5,244,700	1,325,634		
Cedar Grove Township	16	16	54	19	3	10,942	0	0	0	5,351,700	8,547,929	329,400	2,934,009		
East Orange City	102	102	106	114	124	240	0	0	0	9,575,802	22,307,815	0	6,254,761		
Essex Fells Township	1	1	2	1	0	0	0	0	0	242,200	4,013,548	652,500	1,000		
Fairfield Township	9	9	9	32	1	14,400	0	0	0	3,318,408	3,431,419	859,539	17,872,468		
Glen Ridge Borough	2	2	0	80	0	0	0	0	0	519,850	8,594,025	184,535	2,466,300		
Irvington Township	115	115	112	26	20	0	1,463	0	0	8,014,979	6,787,127	164,500	2,165,598		
Livingston Township	89	89	89	142	13	13,706	0	0	0	49,158,338	25,519,291	737,044	8,811,762		
Maplewood Township	6	1	7	17	0	360	0	0	0	36,200	15,413,658	21,607,500	6,780,353		
Millburn Township	29	27	26	16	29	16,348	0	0	0	15,514,082	35,396,567	1,281,001	15,462,984		
Montclair Township	154	154	277	19	11	93,550	0	0	0	27,241,232	32,802,379	8,610,414	12,553,226		
Newark City	2,125	2,122	2,059	1,901	297	102,215	9,241	0	0	170,485,012	22,994,941	26,404,508	201,232,440		
North Caldwell Borough	9	9	9	5	0	0	0	0	0	4,704,505	7,938,185	0	329,950		
Nutley Township	21	21	21	12	15	720	0	0	0	2,399,802	14,192,722	246,672	46,427,895		
City of Orange Township	29	29	72	8	13	0	0	0	0	2,643,365	3,928,799	8,200	2,966,220		
Roseland Borough	17	17	36	49	2	1,000	0	0	0	3,086,100	4,445,964	101,500	21,247,351		

MUNICIPAL SUMMARY DATA, 2006

AREA NAME	AUTHORIZED HSG UNITS		AUTHORIZED HSG UNITS (CENSUS DEFINITIONS)	HSG UNITS CERTIFIED	DEMO-LITIONS	OFFICE SQ FT		RETAIL SQ FT		RESIDENTIAL (\$ AMOUNT)		NONRESIDENTIAL (\$ AMOUNT)	
	HSG UNITS	NEW CONSTR ONLY				AUTHORIZED BY BUILDING PERMITS	AUTHORIZED BY BUILDING PERMITS	NEW CON-STRUCION	ADDITIONS & ALTERATIONS	NEW CON-STRUCION	ADDITIONS & ALTERATIONS	NEW CON-STRUCION	ADDITIONS & ALTERATIONS
South Orange Village	14	14	14	2	0	331,148	0	2,927,700	10,159,734	983,202	23,316,369		
Verona Township	3	3	6	1	7	6,048	0	1,050,500	9,928,830	644,890	10,802,464		
West Caldwell Township	4	4	5	5	1	6,161	0	978,800	8,702,559	62,800	7,109,137		
West Orange Township	152	152	152	6	3	1,716	0	25,723,135	12,795,975	1,613,195	18,258,719		
Gloucester County													
Clayton Borough	11	8	8	23	6	9,815	0	1,099,600	1,751,012	463,846	1,013,856		
Deepford Township	101	100	99	219	15	0	130	7,882,033	6,240,606	14,604,899	14,211,422		
East Greenwich Township	177	176	173	158	0	30,755	0	29,676,633	3,091,993	1,719,951	1,137,490		
Elk Township	13	12	15	16	0	0	0	1,581,069	901,481	260,167	200,670		
Franklin Township	117	116	91	110	8	3,049	0	19,769,270	3,230,744	1,420,796	896,958		
Glassboro Borough	76	73	71	87	26	0	0	10,089,339	2,971,053	207,479	1,716,205		
Greenwich Township	11	8	9	9	2	320	0	716,900	1,200,102	1,232,600	1,431,120		
Harrison Township	126	124	123	170	7	3,548	0	34,682,118	2,690,441	1,240,690	3,475,815		
Logan Township	0	0	0	3	3	0	0	730,550	2,114,980	12,568,177	12,433,715		
Mantua Township	122	34	33	89	2	0	0	7,169,240	3,995,389	856,090	3,489,925		
Monroe Township	238	234	237	253	13	5,608	0	30,395,325	5,876,409	4,699,652	6,299,160		
National Park Borough	2	2	3	1	3	0	0	261,800	440,589	41,300	96,698		
Newfield Borough	0	0	5	0	0	0	0	786,890	510,940	0	31,500		
Paulsboro Borough	6	3	3	4	1	0	0	753,800	1,457,660	0	612,700		
Pitman Borough	4	1	1	0	2	0	0	100,000	3,174,266	0	3,355,686		
South Harrison Township	48	45	37	44	1	6,240	0	7,929,249	1,234,167	244,153	9,703,876		
Swedesborough Borough	13	13	11	3	1	2,852	0	2,041,097	560,855	93,050	462,286		
Washington Township	13	4	4	23	12	144,941	8,826	1,588,125	12,014,795	8,764,042	24,985,917		
Wenonah Borough	5	5	6	0	0	804	0	1,196,256	1,137,851	61,600	259,560		
West Deptford Township	92	92	83	199	5	6,540	0	7,376,524	5,215,745	213,633	14,052,268		
Westville Borough	2	2	6	1	1	0	0	299,550	902,506	46,582	2,346,758		
Woodbury City	7	7	12	8	4	7,582	14,397	737,300	2,152,579	3,100,912	7,317,874		
Woodbury Heights Borough	5	5	9	2	0	357	13,800	201,600	626,444	1,146,258	322,050		
Woolwich Township	103	103	102	262	0	4,522	0	16,419,584	77,001	3,535,817	5,616,342		
Hudson County													
Bayonne City	99	99	134	80	0	32,804	0	8,697,338	23,377,236	10,798,587	25,872,272		
East Newark Borough	0	0	2	0	0	0	0	314,000	269,409	0	13,100		
Guttenberg Town	52	52	46	18	13	0	0	4,207,650	3,486,271	1,950,901	858,605		
Harrison Town	237	237	200	19	13	0	0	27,036,402	1,745,716	0	2,756,118		
Hoboken City	995	867	879	407	17	27,480	0	129,402,474	79,087,079	5,781,500	10,741,171		
Jersey City	2,578	2,259	2,422	955	458	32,151	239,486	134,594,246	92,411,091	20,426,699	122,724,336		
Kearny Town	28	28	15	26	19	0	0	2,429,884	8,330,476	6,895,615	12,435,411		
North Bergen Township	32	32	32	49	12	4,459	0	39,624,776	12,247,113	9,897,046	11,275,511		
Secaucus Town	11	11	55	75	12	7,978	0	2,159,305	5,238,836	24,668,101	25,585,092		
Union City	50	50	47	80	83	1,384	0	13,446,550	15,866,518	4,132,525	7,904,783		
Weehawken Township	1	1	30	1	6	0	0	20,622,100	5,049,057	15,000,000	29,207,590		

MUNICIPAL SUMMARY DATA, 2006

AREA NAME	AUTHORIZED HSG UNITS		AUTHORIZED HSG UNITS (CENSUS DEFINITIONS)	HSG UNITS CERTIFIED	DEMO-LITIONS	OFFICE SQ FT AUTHORIZED BY BUILDING PERMITS		RETAIL SQ FT AUTHORIZED BY BUILDING PERMITS		RESIDENTIAL (\$ AMOUNT)		NONRESIDENTIAL (\$ AMOUNT)	
	HSG UNITS	NEW CONSTR ONLY				BY BUILDING PERMITS	AUTHORIZED BY BUILDING PERMITS	NEW CON-STRUCTION	ADDITIONS & ALTERATIONS	NEW CON-STRUCTION	ADDITIONS & ALTERATIONS	NEW CON-STRUCTION	ADDITIONS & ALTERATIONS
West New York Town	406	406	413	441	1	286	0	0	0	114,015,400	15,698,240	48,000	11,500,133
Hunterdon County													
Alexandria Township	36	36	40	29	0	0	0	0	0	7,631,334	3,271,122	1,032,759	233,623
Bethlehem Township	3	2	2	5	2	0	0	0	0	445,785	3,278,962	174,395	611,153
Bloomsbury Borough	0	0	0	0	0	0	0	0	0	0	288,659	0	186,685
Califon Borough	0	0	0	1	0	0	0	0	0	1,000	498,120	0	3,209,817
Clinton Town	0	0	0	0	0	0	0	0	0	0	0	0	1,502,631
Clinton Township	12	12	15	24	2	57,733	0	0	0	3,298,350	8,371,795	13,920,570	5,318,395
Delaware Township	12	12	17	10	4	798	0	0	0	2,723,100	2,931,297	1,670,156	2,251,791
East Amwell Township	3	3	9	7	1	0	2,784	0	0	1,844,175	2,874,161	618,135	648,784
Flemington Borough	44	44	22	0	0	0	15,946	0	0	987,401	1,373,183	1,326,000	2,524,457
Franklin Township	9	9	9	9	2	4,360	0	0	0	2,494,345	2,718,686	609,765	4,314,037
Frenchtown Borough	1	1	1	0	0	0	0	0	0	164,845	511,283	13,588	162,863
Glen Gardner Borough	0	0	0	0	1	0	0	0	0	0	499,955	1,440	91,041
Hampton Borough	5	5	5	13	1	108	0	0	0	954,178	427,936	53,164	112,675
High Bridge Borough	0	0	3	0	1	0	0	0	0	0	1,544,475	0	59,125
Holland Township	10	10	11	10	0	0	0	0	0	1,239,127	2,308,615	632,950	1,129,776
Kingwood Township	20	18	19	15	6	84,315	0	0	0	1,644,700	1,476,300	4,059,361	517,115
Lambertville City	24	22	1	51	8	0	0	0	0	3,734,837	2,247,550	0	623,957
Lebanon Borough	0	0	46	0	0	2,600	0	0	0	141,029	774,506	293,618	483,586
Lebanon Township	9	9	9	2	5	0	0	0	0	3,033,254	3,944,355	207,565	830,035
Milford Borough	0	0	0	1	1	0	0	0	0	200	354,259	960	121,839
Karitan Township	50	50	49	73	7	84,800	0	0	0	11,550,073	10,737,618	9,225,272	10,961,419
Readington Township	17	17	14	20	18	0	0	0	0	14,366,529	12,624,774	4,040,479	8,461,386
Stockton Borough	2	2	3	0	0	0	0	0	0	427,650	225,331	52,047	88,775
Tewksbury Township	26	26	26	18	1	0	0	0	0	6,927,988	5,618,780	1,072,770	2,703,163
Union Township	32	32	32	17	2	144	0	0	0	5,973,365	1,457,880	264,950	3,431,010
West Amwell Township	112	112	17	23	1	0	0	0	0	3,110,555	1,493,057	879,900	1,439,397
Mercer County													
East Windsor Township	66	66	66	80	3	52,574	79,138	0	0	7,522,370	6,067,567	21,569,540	11,114,333
Ewing Township	7	7	7	6	2	128,460	9,968	0	0	1,412,964	12,323,265	14,727,652	10,486,619
Hamilton Township	312	310	390	287	24	394,836	0	0	0	19,526,818	23,448,337	31,423,878	48,484,725
Hightstown Borough	32	28	21	18	0	0	0	0	0	5,365,090	1,845,790	115,000	2,473,635
Hopewell Borough	1	1	1	1	4	0	4,033	0	0	45,000	1,390,580	208,026	1,297,127
Hopewell Township	16	16	16	102	8	33,151	1,882	0	0	4,482,067	11,275,540	14,141,087	17,642,554
Lawrence Township	42	41	55	114	7	114,982	4,578	0	0	8,837,265	10,970,134	10,855,434	25,083,774
Pennington Borough	4	4	7	0	2	0	0	0	0	716,082	1,277,415	685,000	912,717
Princeton Borough	7	7	18	4	5	6,695	0	0	0	4,279,906	12,518,089	2,264,500	35,823,193
Princeton Township	23	22	23	13	11	13,456	0	0	0	14,166,998	25,226,687	7,001,260	34,545,136
Trenton City	144	143	5	27	63	70,054	0	0	0	13,334,265	15,449,929	42,496,519	14,161,042
Washington Township	87	87	84	108	3	360	838	0	0	8,735,430	4,825,564	18,931,278	11,013,203

MUNICIPAL SUMMARY DATA, 2006

AREA NAME	AUTHORIZED HSG UNITS		AUTHORIZED HSG UNITS (CENSUS DEFINITIONS)	HSG UNITS CERTIFIED	DEMO-LITIONS	OFFICE SQ FT AUTHORIZED BY BUILDING PERMITS		RETAIL SQ FT AUTHORIZED BY BUILDING PERMITS		RESIDENTIAL (\$ AMOUNT)		NONRESIDENTIAL (\$ AMOUNT)	
	AUTHORIZED HSG UNITS	NEW CONSTR ONLY				NEW CON-STRUCTION	ADDITIONS & ALTERATIONS	ADDITIONS & ALTERATIONS	ADDITIONS & ALTERATIONS	NEW CON-STRUCTION	ADDITIONS & ALTERATIONS	NEW CON-STRUCTION	ADDITIONS & ALTERATIONS
West Windsor Township	160	157	154	709	4	3,853	6,000	14,565,160	11,816,637	18,339,218	17,418,139		
Middlesex County													
Carteret Borough	191	191	228	86	16	151,478	0	5,329,254	6,825,527	7,734,299	16,892,335		
Cranbury Township	25	25	25	2	5	103,792	0	3,428,600	3,380,291	4,633,941	2,577,113		
Dunellen Borough	9	9	28	0	1	0	0	1,326,500	0	125,000	2,117,759		
East Brunswick Township	23	23	12	0	0	0	0	2,861,500	20,247,555	1,627,818	112,603,778		
Edison Township	118	118	338	144	8	74,949	3,000	21,373,925	26,990,589	9,876,584	42,087,460		
Helmetta Borough	0	0	0	0	0	0	0	0	553,430	15,050	323,960		
Highland Park Borough	3	3	57	68	1	0	0	0	13,200	2,197,450	29,701,085		
Jamesburg Borough	1	1	0	2	3	4,240	0	6,000	991,696	254,000	914,959		
Old Bridge Township	294	294	270	402	21	121,974	164,885	20,291,448	19,741,523	12,825,997	8,184,690		
Metuchen Borough	9	9	9	18	17	3,000	0	1,853,500	10,006,451	296,000	28,438,957		
Middlesex Borough	17	17	16	5	2	0	0	3,105,540	3,647,963	261,000	2,205,126		
Milltown Borough	1	1	3	0	0	0	0	143,000	3,019,336	0	605,634		
Monroe Township	836	831	826	614	8	5,972	0	96,006,053	9,644,730	10,618,528	18,927,274		
New Brunswick City	160	159	226	16	11	0	16,000	9,667,720	11,808,956	13,929,222	25,172,928		
North Brunswick Township	12	12	12	182	10	68,734	40,035	1,892,659	6,815,899	4,216,732	27,153,543		
Perth Amboy City	302	201	201	43	14	240	13,882	11,696,966	18,774,451	33,172,806	6,150,570		
Piscataway Township	63	63	63	40	15	564,814	0	8,117,882	12,549,739	4,001,059	62,953,583		
Plainsboro Township	129	129	35	56	2	7,942	0	18,628,789	6,883,426	6,092,838	20,618,988		
Sayreville Borough	25	24	23	41	4	8,842	0	3,593,128	9,564,310	3,930,652	12,227,067		
South Amboy City	11	11	4	80	6	20,000	0	1,615,000	2,840,623	474,800	1,631,695		
South Brunswick Township	172	171	145	148	10	66,530	234,008	20,393,321	14,039,865	52,525,757	41,229,163		
South Plainfield Borough	14	12	19	16	1	9,747	0	2,347,500	3,391,474	266,278	17,115,938		
South River Borough	6	5	11	3	5	0	5,773	515,401	3,702,547	1,190,350	2,183,325		
Spotswood Borough	6	6	14	18	0	0	0	1,231,538	2,745,230	271,452	1,216,770		
Woodbridge Township	48	48	2	50	31	11,965	28,160	17,419,162	28,105,296	42,849,188	138,571,158		
Monmouth County													
Allenhurst Borough	0	0	0	0	1	0	0	0	1,293,315	54,500	217,900		
Allentown Borough	3	3	7	2	0	0	0	1,294,500	625,173	0	189,284		
Asbury Park City	165	165	442	1	18	16,906	53,345	22,737,628	8,329,077	27,234,150	7,913,121		
Atlantic Highlands Borough	0	0	1	0	0	0	0	0	0	505,000	2,431,745		
Avon-by-the-Sea Borough	10	9	7	0	11	4,800	0	3,229,500	2,294,401	10,000	481,041		
Belmar Borough	26	26	24	12	33	0	2,115	6,302,967	3,646,194	0	1,983,123		
Bradley Beach Borough	10	9	52	26	5	0	0	1,638,200	3,036,494	110,000	2,093,062		
Brielle Borough	25	25	29	21	11	2,316	675	6,578,400	4,622,824	341,650	928,094		
Colts Neck Township	12	11	11	10	11	0	0	5,358,423	11,804,270	2,167,665	5,811,462		
Deal Borough	9	9	3	5	5	0	0	3,262,100	3,683,877	120,000	414,346		
Eatonville Borough	5	5	26	16	5	226	0	1,190,170	4,067,129	1,189,655	14,441,035		
Englishtown Borough	0	0	30	16	0	0	4,760	0	0	750,100	964,761		
Fair Haven Borough	19	19	15	11	16	0	0	6,363,326	11,690,297	0	777,008		

MUNICIPAL SUMMARY DATA, 2006

AREA NAME	AUTHORIZED HSG UNITS		AUTHORIZED HSG UNITS (CENSUS DEFINITIONS)	HSG UNITS CERTIFIED	DEMO-LITIONS	OFFICE SQ FT AUTHORIZED BY BUILDING PERMITS		RETAIL SQ FT AUTHORIZED BY BUILDING PERMITS		RESIDENTIAL (\$ AMOUNT)		NONRESIDENTIAL (\$ AMOUNT)	
	HSG UNITS	NEW CONSTR ONLY				BY BUILDING PERMITS	BY BUILDING PERMITS	NEW CON-STRUCTION	ADDITIONS & ALTERATIONS	NEW CON-STRUCTION	ADDITIONS & ALTERATIONS	NEW CON-STRUCTION	ADDITIONS & ALTERATIONS
Farmingdale Borough	6	6	6	3	0	0	0	0	0	300,000	389,432	31,000	51,625
Freehold Borough	7	7	16	11	0	38,433	0	0	0	911,699	2,335,589	49,398	2,150,618
Freehold Township	11	11	101	0	0	16,746	34,095	0	0	9,458,947	8,696,249	7,188,500	31,805,000
Highlands Borough	8	8	10	4	9	1,345	0	0	0	1,367,800	2,076,082	100,000	650,599
Holmdel Township	16	16	21	12	6	2,304	0	0	0	6,415,907	10,418,612	857,000	9,762,171
Howell Township	86	85	88	144	13	58,439	47,701	0	0	18,631,096	14,874,818	12,937,042	12,122,838
Interlaken Borough	0	0	15	0	0	0	0	0	0	0	1,685,989	0	0
Keansburg Borough	5	5	5	3	4	2,896	0	0	0	516,551	2,496,074	267,201	905,997
Keyport Borough	17	17	24	4	3	32,367	0	0	0	2,348,350	2,536,738	5,603,250	1,167,167
Little Silver Borough	10	10	13	9	4	0	0	0	0	3,548,939	7,160,094	410,590	2,409,073
Loch Arbour Village	0	0	0	0	0	0	0	0	0	0	693,277	0	127,695
Long Branch City	140	140	7	100	1	2,478	0	0	0	26,930,400	15,053,689	412,026	13,714,319
Manalapan Township	414	413	403	432	8	67,617	0	0	0	57,540,507	20,217,168	8,190,687	2,336,548
Manasquan Borough	33	33	37	36	22	10,638	0	0	0	8,508,387	5,254,113	1,017,100	9,874,240
Marlboro Township	90	90	71	119	11	20,541	0	0	0	19,889,353	21,338,384	2,730,176	7,929,500
Matawan Borough	3	3	3	1	2	0	0	0	0	720,500	2,875,472	2,500	1,116,396
Aberdeen Township	17	16	16	64	8	889	5,744	0	0	1,569,853	5,110,206	640,405	2,880,205
Middletown Township	236	229	232	127	42	92,718	0	0	0	32,110,042	44,142,604	16,021,547	16,673,919
Millstone Township	24	24	24	24	10	14,961	6,120	0	0	7,449,565	4,937,214	2,988,671	4,066,660
Monmouth Beach Borough	12	12	7	5	13	0	0	0	0	3,381,334	5,649,830	197,400	1,722,668
Neptune Township	8	8	455	5	4	58,973	0	0	0	4,984,814	14,194,587	88,355,258	11,389,412
Neptune City Borough	0	0	1	1	0	12,003	0	0	0	500	1,325,926	870,000	1,783,744
Tinton Falls Borough	151	149	154	54	13	0	0	0	0	16,121,682	5,339,974	1,575,695	6,812,457
Ocean Township	110	110	108	345	12	11,697	36,269	0	0	18,434,330	14,632,448	3,700,075	5,786,232
Oceanport Borough	4	4	10	1	2	3,281	0	0	0	1,669,300	2,124,827	416,100	2,597,649
Hazlet Township	8	7	22	13	6	0	0	0	0	868,000	8,516,379	3,788,500	4,091,329
Red Bank Borough	54	54	53	8	5	194,553	6,424	0	0	10,232,035	7,203,635	14,815,524	10,558,540
Roosevelt Borough	1	1	1	0	1	0	0	0	0	255,000	538,732	0	24,401
Rumson Borough	41	41	44	31	4	0	0	0	0	20,965,641	16,061,164	0	4,233,336
Sea Bright Borough	8	8	8	10	4	0	0	0	0	3,314,989	1,098,612	0	875,921
Sea Girt Borough	20	20	27	17	20	0	0	0	0	10,840,500	3,442,468	431,800	937,314
Shrewsbury Borough	5	5	18	9	0	6,381	0	0	0	1,799,050	3,331,439	9,013,000	2,371,866
Shrewsbury Township	0	0	0	0	2	0	0	0	0	0	140,832	0	3,800
Lake Como Borough	9	5	5	7	16	3,200	0	0	0	683,200	1,993,175	767,942	224,800
Spring Lake Borough	20	20	25	18	14	0	0	0	0	9,756,360	6,832,220	63,000	644,536
Spring Lake Heights Boro	13	13	23	16	6	0	0	0	0	1,727,540	2,209,063	196,000	295,525
Union Beach Borough	6	5	10	3	1	0	0	0	0	1,391,473	1,645,048	0	213,000
Upper Freehold Township	44	44	59	58	3	151	0	0	0	16,660,649	2,473,497	1,351,762	1,506,994
Wall Township	81	74	45	79	34	248,589	0	0	0	21,688,778	27,960,514	19,274,627	23,849,881
West Long Branch Borough	7	6	6	5	4	11,560	0	0	0	1,022,910	4,081,661	1,328,005	2,958,695
Morris County													

MUNICIPAL SUMMARY DATA, 2006

AREA NAME	AUTHORIZED HSG UNITS		AUTHORIZED HSG UNITS (CENSUS DEFINITIONS)	HSG UNITS CERTIFIED	DEMO-LITONS	OFFICE SQ FT		RETAIL SQ FT		RESIDENTIAL (\$ AMOUNT)		NONRESIDENTIAL (\$ AMOUNT)	
	HSG UNITS	NEW CONSTR ONLY				AUTHORIZED BY BUILDING PERMITS	AUTHORIZED BY BUILDING PERMITS	NEW CON-STRUCTION	ADDITIONS & ALTERATIONS	NEW CON-STRUCTION	ADDITIONS & ALTERATIONS	NEW CON-STRUCTION	ADDITIONS & ALTERATIONS
Boonton Town	9		23	28	1	3,642	1,660	1,961,500	4,411,416	1,961,500	4,411,416	431,100	694,829
Boonton Township	19	19	27	9	0	0	0	4,690,011	25,952,543	4,690,011	25,952,543	627,000	1,637,000
Butler Borough	59	59	58	2	1	38,595	0	3,105,500	3,225,498	3,105,500	3,225,498	2,532,378	289,769
Chatham Borough	8	8	10	1	7	0	0	2,060,300	13,929,369	2,060,300	13,929,369	0	14,776,700
Chatham Township	55	55	57	23	42	0	0	24,588,674	19,715,638	24,588,674	19,715,638	748,941	6,450,119
Chester Borough	7	3	3	2	1	22,363	0	962,800	2,238,724	962,800	2,238,724	1,912,700	8,397,749
Chester Township	9	9	8	17	1	6,487	0	2,311,529	7,001,606	2,311,529	7,001,606	789,403	14,538,321
Denville Township	53	53	46	60	6	6,487	0	11,263,389	11,073,444	11,263,389	11,073,444	1,504,894	15,961,167
Dover Town	1	1	1	6	1	9,696	13,997	87,000	3,265,764	87,000	3,265,764	7,309,270	5,703,623
East Hanover Township	19	19	23	9	28	325,824	71,872	3,714,420	8,202,839	3,714,420	8,202,839	36,770,000	40,702,228
Florham Park Borough	23	23	25	21	21	3,881	0	5,722,850	6,250,724	5,722,850	6,250,724	13,973,400	12,583,445
Hanover Township	61	61	52	35	11	67	0	11,137,114	8,639,350	11,137,114	8,639,350	13,746,297	45,647,023
Harding Township	8	8	10	47	2	9,674	210	13,134,200	12,400,677	13,134,200	12,400,677	2,238,250	2,258,935
Jefferson Township	35	30	53	69	17	21,882	1	4,165,612	9,555,466	4,165,612	9,555,466	2,814,365	2,177,177
Kinnelon Borough	23	23	26	29	1	0	0	8,279,631	12,967,714	8,279,631	12,967,714	33,287	194,935
Lincoln Park Borough	6	6	6	0	6	0	0	805,238	2,926,182	805,238	2,926,182	50,000	208,216
Madison Borough	32	32	34	21	15	80,521	19,500	13,293,300	16,032,516	13,293,300	16,032,516	6,512,725	26,812,802
Mendham Borough	1	1	2	6	3	0	0	555,950	4,802,201	555,950	4,802,201	522,281	7,697,494
Mendham Township	13	13	13	2	2	0	0	6,728,031	6,863,861	6,728,031	6,863,861	140,000	1,309,341
Mine Hill Township	1	0	3	0	0	360	0	0	1,849,064	0	1,849,064	0	472,933
Montville Township	36	36	37	36	21	5,742	0	14,096,852	10,778,318	14,096,852	10,778,318	1,054,894	4,639,330
Morris Township	15	14	18	6	20	13,785	0	5,636,200	17,280,727	5,636,200	17,280,727	192,370	22,632,440
Morris Plains Borough	6	6	43	1	1	326,950	0	1,613,500	4,113,242	1,613,500	4,113,242	38,150,320	4,344,046
Morristown Town	287	287	307	12	36	47,372	8,682	57,613,520	9,638,756	57,613,520	9,638,756	18,665,780	24,207,702
Mountain Lakes Borough	4	4	8	8	4	5,094	0	2,948,949	9,865,766	2,948,949	9,865,766	443,003	576,409
Mount Arlington Borough	36	35	94	97	0	1,035	150	3,848,200	2,342,213	3,848,200	2,342,213	546,000	568,905
Mount Olive Township	115	114	114	38	6	192,634	14,808	15,626,295	6,254,054	15,626,295	6,254,054	7,036,366	13,470,094
Netcong Borough	2	2	4	3	2	0	0	260,100	681,773	260,100	681,773	0	158,534
Parsippany-Troy Hills Twp	108	107	68	117	30	11,432	3,500	13,016,443	17,860,695	13,016,443	17,860,695	1,110,204	52,255,546
Long Hill Township	2	2	2	5	1	0	0	597,055	6,702,705	597,055	6,702,705	0	381,383
Pequanock Township	139	139	286	393	6	23,662	0	36,168,511	8,589,210	36,168,511	8,589,210	1,672,677	3,582,697
Randolph Township	11	10	10	14	8	2,880	9,068	3,253,775	13,878,883	3,253,775	13,878,883	22,272,450	20,180,043
Riverdale Borough	93	91	91	71	0	371,124	0	7,365,300	1,417,904	7,365,300	1,417,904	19,699,876	4,768,673
Rockaway Borough	2	2	0	7	1	9,276	62,920	420,800	1,981,700	420,800	1,981,700	4,193,310	1,068,617
Rockaway Township	18	18	42	124	10	0	0	5,058,729	10,644,294	5,058,729	10,644,294	812,909	8,747,786
Roxbury Township	18	18	37	24	22	4,480	9,185	3,136,950	11,791,137	3,136,950	11,791,137	1,782,675	7,935,734
Victory Gardens Borough	0	0	0	0	0	0	0	0	94,558	0	94,558	0	0
Washington Township	25	25	25	35	1	0	0	7,542,041	12,200,232	7,542,041	12,200,232	254,101	2,081,696
Wharton Borough	5	5	4	1	0	0	0	616,200	2,230,332	616,200	2,230,332	0	1,608,609
Ocean County	0	0	5	0	0	3,117	0	1,918,000	2,390,027	1,918,000	2,390,027	450,000	265,508
Barneget Light Borough	0	0	0	0	0	0	0	0	0	0	0	0	0

MUNICIPAL SUMMARY DATA, 2006

AREA NAME	AUTHORIZED HSG UNITS		AUTHORIZED HSG UNITS (CENSUS DEFINITIONS)	HSG UNITS CERTIFIED	DEMO-LITIONS	OFFICE SQ FT AUTHORIZED BY BUILDING PERMITS		RETAIL SQ FT AUTHORIZED BY BUILDING PERMITS		RESIDENTIAL (\$ AMOUNT)			NONRESIDENTIAL (\$ AMOUNT)		
	HSG UNITS	NEW CONSTR ONLY				BY BUILDING PERMITS	BY BUILDING PERMITS	NEW CON-STRUCTION	ADDITIONS & ALTERATIONS	NEW CON-STRUCTION	ADDITIONS & ALTERATIONS	NEW CON-STRUCTION	ADDITIONS & ALTERATIONS	NEW CON-STRUCTION	ADDITIONS & ALTERATIONS
Bay Head Borough	14	14	8	8	12	0	0	0	0	5,943,425	3,925,669	0	0	5,050	
Beach Haven Borough	18	16	33	44	18	828	0	0	0	4,805,982	3,271,054	414,602	0	901,759	
Beachwood Borough	39	25	23	6	28	0	0	0	0	2,090,947	3,986,383	8,000	0	10,446	
Berkeley Township	101	101	102	112	18	69,406	0	0	0	17,386,880	12,997,462	2,595,527	0	913,225	
Brick Township	114	114	111	73	81	92,796	63,876	0	0	21,933,781	32,201,445	3,525,000	0	28,868,502	
Toms River Township	254	251	244	289	160	230,770	14,800	0	0	49,568,686	36,451,427	26,716,102	0	42,809,906	
Eagleswood Township	10	9	18	11	1	1,105	0	0	0	2,538,077	2,075	447,503	0	936,040	
Harvey Cedars Borough	0	0	11	0	0	0	0	0	0	4,130,950	3,059,980	931,929	0	0	
Island Heights Borough	3	3	10	6	1	0	2,128	0	0	1,111,470	1,508,569	25,000	0	45,400	
Jackson Township	405	394	146	477	1	51,022	30,320	0	0	52,336,460	7,317,190	9,907,816	0	20,194,438	
Lacey Township	69	69	35	60	20	64,659	7,009	0	0	12,449,414	8,736,251	4,907,816	0	3,952,080	
Lakehurst Borough	1	1	16	0	0	0	0	0	0	1,280,000	668,393	85,000	0	342,760	
Lakewood Township	328	327	185	754	65	64,877	2,032	0	0	51,185,929	10,659,940	9,396,390	0	14,350,191	
Lavallette Borough	34	32	14	2	18	0	0	0	0	10,533,375	3,799,941	0	0	303,749	
Little Egg Harbor Township	169	168	143	274	20	206,893	0	0	0	17,157,595	8,514,952	8,356,702	0	3,486,095	
Long Beach Township	127	125	112	104	65	0	0	0	0	55,586,608	22,582,178	0	0	2,732,550	
Manchester Township	115	112	1	234	7	9,656	69,962	0	0	10,826,795	8,316,225	16,256,281	0	2,705,761	
Mantoloking Borough	1	1	1	4	4	0	0	0	0	1,715,700	5,414,501	1,409,600	0	326,560	
Ocean Township	192	192	201	225	18	784	10,100	0	0	20,966,386	3,983,131	40,000	0	783,483	
Ocean Gate Borough	6	4	3	7	3	0	0	0	0	2,272,181	1,752,248	0	0	75,150	
Pine Beach Borough	0	0	16	0	0	0	0	0	0	2,612,200	1,109,365	0	0	303,700	
Plumsted Township	23	23	30	25	6	5,900	16,198	0	0	2,970,005	1,847,647	2,725,206	0	2,165,440	
Point Pleasant Borough	55	54	54	31	26	2,390	0	0	0	8,649,288	9,210,680	464,254	0	2,126,683	
Point Pleasant Beach Borc	20	16	19	10	27	0	3,928	0	0	2,983,515	7,754,899	440,600	0	2,901,784	
Seaside Heights Borough	54	49	79	104	8	0	0	0	0	5,684,676	3,177,868	550,370	0	851,611	
Seaside Park Borough	13	13	13	9	18	0	0	0	0	3,942,283	3,109,618	0	0	290,502	
Ship Bottom Borough	31	31	26	17	15	2,215	7,667	0	0	6,258,791	2,434,238	1,741,002	0	529,845	
South Toms River Borough	5	5	5	8	0	0	0	0	0	276,200	677,328	0	0	195,600	
Stafford Township	119	119	115	136	26	1	159,268	0	0	21,241,833	566,554	9,912,822	0	20,829,188	
Surf City Borough	30	19	19	46	27	0	0	0	0	7,188,500	3,602,461	0	0	0	
Tuckerton Borough	10	5	16	15	0	0	0	0	0	113,000	43,978	1,287,429	0	3,500,765	
Barneget Township	311	306	300	350	3	1,680	34,875	0	0	31,963,097	3,137,037	1,889,810	0	3,916,926	
Passaic County															
Bloomington Borough	1	1	0	1	2	0	0	0	0	530,000	3,973,611	40,000	0	99,567	
Clifton City	13	13	60	170	8	23,427	0	0	0	2,839,300	18,917,156	2,624,948	0	21,085,158	
Haledon Borough	56	56	57	0	0	0	0	0	0	1,584,650	1,419,132	0	0	781,020	
Hawthorne Borough	56	56	89	16	2	20,297	0	0	0	6,803,124	7,986,989	1,122,203	0	789,050	
Little Falls Township	8	7	11	1	4	3,600	0	0	0	440,000	4,298,360	194,500	0	1,339,656	
North Haledon Borough	10	9	9	2	2	4,775	0	0	0	2,706,120	4,770,288	11,000,500	0	7,142,469	
Passaic City	134	89	45	12	10	6,053	11,785	0	0	6,250,800	18,891,000	640,000	0	6,099,095	
Paterson City	353	211	0	164	73	51,868	228,416	0	0	16,069,850	16,613,334	20,580,995	0	15,514,224	

MUNICIPAL SUMMARY DATA, 2006

AREA NAME	AUTHORIZED HSG UNITS		HSG UNITS CERTIFIED	DEMO-LITIONS	OFFICE SQ. FT. AUTHORIZED BY BUILDING PERMITS		RETAIL SQ. FT. AUTHORIZED BY BUILDING PERMITS		RESIDENTIAL (\$ AMOUNT)		NONRESIDENTIAL (\$ AMOUNT)	
	AUTHORIZED HSG UNITS (CENSUS DEFINITIONS)	NEW CONSTR ONLY			AUTHORIZED BY BUILDING PERMITS	BY BUILDING PERMITS	NEW CON-STRUC-TION	ADDITIONS & ALTERATIONS	NEW CON-STRUC-TION	ADDITIONS & ALTERATIONS	RESIDENTIAL (\$ AMOUNT)	NONRESIDENTIAL (\$ AMOUNT)
Pompton Lakes Borough	8	7	5	3	14	0	0	0	1,119,500	4,826,668	1,404,000	1,029,557
Prospect Park Borough	0	0	0	0	0	0	0	0	0	764,448	0	76,300
Ringwood Borough	8	8	25	17	2	0	0	0	1,912,700	5,262,728	180,000	880,746
Totowa Borough	6	6	47	6	0	60,957	0	0	2,021,800	5,662,922	1,131,000	6,757,776
Wanaque Borough	236	236	231	337	5	69,057	0	0	24,759,947	5,080,332	5,486,000	1,460,712
Wayne Township	21	21	26	12	1	209,460	0	0	4,693,062	36,053,728	64,447,400	27,016,260
West Milford Township	36	36	36	21	0	240	0	0	8,088,130	10,312,127	1,251,343	3,729,359
West Paterson Borough	192	192	209	62	1	0	0	0	25,239,000	3,013,402	5,710,975	3,034,046
Salem County												
Alloway Township	10	10	10	8	0	4,368	0	0	2,145,367	1,246,260	348,000	4,890,500
Elmer Borough	0	0	0	0	0	0	0	0	0	350,219	241,000	229,380
Elsinboro Township	4	4	1	1	0	0	0	0	1,194,000	173,350	47,000	20,495
Lower Alloways Creek Twp	2	2	2	1	0	0	0	0	355,000	397,732	1,009,500	3,256,432
Mannington Township	4	4	7	2	0	0	0	0	863,050	358,946	102,200	662,248
Oldmans Township	2	2	5	1	1	816	0	0	612,100	221,227	7,669,800	1,805,100
Penns Grove Borough	1	1	1	1	1	0	6,889	0	160,000	712,044	182,100	46,795
Pennsville Township	130	130	129	40	6	0	0	0	12,898,925	2,564,843	1,424,087	1,084,047
Pilesgrove Township	16	15	22	27	5	2,016	0	0	3,010,358	644,152	481,780	227,178
Pittsgrove Township	33	32	30	42	1	0	0	0	3,608,110	1,343,226	370,660	1,481,446
Quinton Township	10	10	13	5	2	3,194	0	0	1,588,700	470,588	341,800	147,835
Salem City	60	60	3	60	14	860	0	0	6,165,040	2,194,911	3,500	308,224
Carneys Point Township	42	41	44	32	7	0	0	0	3,545,238	1,363,696	294,400	1,420,576
Upper Pittsgrove Township	8	7	6	4	18	160	0	0	736,955	565,111	370,475	294,057
Woodstown Borough	28	26	25	39	1	4,000	0	0	2,102,975	696,666	31,800	247,034
Somerset County												
Bedminster Township	8	3	1	1	1	47,220	18,790	0	803,000	3,801,999	3,125,000	7,322,326
Bernards Township	22	22	21	18	9	25,335	28,663	0	10,954,613	22,796,498	10,288,200	71,100,098
Bernardsville Borough	16	13	10	8	7	260	0	0	4,269,702	9,756,708	73,350	2,560,194
Bound Brook Borough	48	48	50	0	0	0	0	0	5,530,100	1,998,983	0	1,806,236
Branchburg Township	13	13	15	16	6	3,972	40,852	0	3,532,000	7,760,132	7,718,581	23,210,134
Bridgewater Township	127	127	172	22	21	15,156	57,879	0	31,287,446	21,789,839	19,937,870	56,791,323
Far Hills Borough	0	0	3	0	0	0	0	0	605,000	2,114,268	0	143,370
Franklin Township	313	313	344	485	28	211,175	2,075	0	32,556,844	18,236,984	13,437,520	30,793,033
Green Brook Township	4	3	3	13	0	0	18,023	0	551,600	3,175,185	842,618	2,950,332
Hillsborough Township	51	51	114	24	4	4,592	0	0	20,826,481	12,701,150	2,864,365	9,878,422
Manville Borough	9	9	8	2	2	0	0	0	1,201,360	2,541,416	31,200	2,487,086
Millstone Borough	0	0	0	0	0	0	0	0	0	225,243	0	32,000
Montgomery Township	6	6	6	120	2	7,338	0	0	197,751	8,174,677	108,390	4,371,354
North Plainfield Borough	2	2	2	0	1	0	0	0	422,000	2,825,553	0	1,320,994
Peapack-Gladstone Boro	3	3	2	3	2	0	0	0	1,741,450	1,653,828	367,350	1,445,116
Raritan Borough	4	3	133	0	0	9,365	0	0	1,414,300	2,543,984	25,000	5,566,155

MUNICIPAL SUMMARY DATA, 2006

AREA NAME	AUTHORIZED HSG UNITS		AUTHORIZED HSG UNITS (CENSUS DEFINITIONS)	HSG UNITS CERTIFIED	DEMO-LITIONS	OFFICE SQ FT AUTHORIZED BY BUILDING PERMITS		RETAIL SQ FT AUTHORIZED BY BUILDING PERMITS		RESIDENTIAL (\$ AMOUNT)		NONRESIDENTIAL (\$ AMOUNT)	
	HSG UNITS	NEW CONSTR ONLY				BY BUILDING PERMITS	BY BUILDING PERMITS	NEW CON-STRUCTION	ADDITIONS & ALTERATIONS	NEW CON-STRUCTION	ADDITIONS & ALTERATIONS	NEW CON-STRUCTION	ADDITIONS & ALTERATIONS
Rocky Hill Borough	0	0	0	1	0	0	0	0	0	0	577,247	23,818	568,643
Somerville Borough	0	0	5	8	6	3,603	0	0	0	227,450	4,345,289	4,588,433	6,329,971
South Bound Brook Boro	63	63	115	114	0	0	0	0	0	6,305,500	1,080,465	122,705	94,877
Warren Township	36	36	32	30	16	17,998	0	0	0	9,397,857	14,991,083	5,273,631	7,721,450
Watchung Borough	21	21	22	24	3	0	0	0	0	4,755,850	5,868,287	2,105,617	4,157,717
Sussex County													
Andover Borough	0	0	0	0	0	0	0	0	0	0	186,568	9,003,200	91,540
Andover Township	40	38	37	27	1	0	0	0	0	5,109,487	1,874,226	434,660	669,996
Branchville Borough	1	1	1	1	0	0	0	0	0	290,000	385,940	0	513,400
Byram Township	11	11	16	10	0	0	0	0	0	2,755,949	2,505,384	105,430	792,790
Frankford Township	12	12	20	11	0	5,170	0	0	0	2,938,753	3,403,676	876,922	1,606,475
Franklin Borough	8	8	14	1	3	4,351	144	0	0	894,000	1,397,941	1,587,222	1,817,972
Fredon Township	19	19	21	23	0	0	0	0	0	3,584,050	1,777,006	349,613	164,720
Green Township	18	18	20	14	0	0	0	0	0	4,631,300	1,567,624	35,500	253,828
Hamburg Borough	0	0	9	2	0	0	0	0	0	5,000	487,812	300,000	142,318
Hampton Township	16	15	16	14	0	0	0	0	0	2,893,041	2,549,073	392,981	342,320
Hardyston Township	116	116	110	199	6	1,280	0	0	0	50,039,654	3,440,282	497,630	1,293,332
Hopatcong Borough	22	22	25	1	3	400	3,775	0	0	3,536,120	5,162,833	242,280	5,581,718
Lafayette Township	2	2	3	8	2	4,560	0	0	0	1,980,200	887,659	382,261	2,190,228
Montague Township	31	26	35	28	1	160	0	0	0	2,827,006	1,717,319	174,200	284,410
Newton Town	0	0	4	0	0	65,141	0	0	0	509,500	1,959,157	12,623,621	8,899,669
Ogdensburg Borough	0	0	7	0	0	0	0	0	0	4,300	1,136,427	0	68,200
Sandyston Township	5	5	6	4	1	0	0	0	0	1,153,803	1,406,198	488,100	380,207
Sparta Township	101	101	105	82	5	112,977	0	7,200	0	24,981,335	14,791,279	7,567,350	9,953,363
Stanhope Borough	3	3	3	2	2	0	0	0	0	773,502	1,075,982	15,971	170,864
Stillwater Township	7	7	14	8	0	0	0	0	0	1,297,413	2,414,023	44,500	552,500
Sussex Borough	2	2	11	3	0	0	0	0	0	355,280	400,706	1,263,480	642,784
Vernon Township	32	32	46	212	9	162	0	0	0	6,054,596	12,411,392	2,961,543	5,770,561
Walpack Township	0	0	0	0	0	0	0	0	0	0	0	0	0
Wantage Township	81	81	80	53	2	5,537	0	0	0	14,477,238	3,978,626	1,932,875	2,142,161
Union County													
Berkeley Heights Township	38	38	27	26	14	3,720	11,288	15,337,995	18,670,057	2,742,100	7,450,500	17,191,804	17,191,804
Clark Township	17	17	18	8	11	0	52,812	3,856,493	10,251,599	3,500,500	7,745,545	7,745,545	7,745,545
Cranford Township	47	27	29	13	4	0	0	3,092,139	21,240,927	408,800	15,870,256	15,870,256	15,870,256
Elizabeth City	588	584	433	392	251	66,352	15,594	60,446,278	14,302,188	27,582,116	12,682,126	12,682,126	12,682,126
Fanwood Borough	41	31	29	11	3	44,389	0	3,651,880	6,725,652	3,364,100	325,855	325,855	325,855
Garwood Borough	45	45	72	4	0	0	0	7,954,550	2,026,380	0	0	0	873,967
Hilside Township	27	27	25	12	10	4,184	0	2,695,302	3,379,681	1,046,708	5,439,604	5,439,604	5,439,604
Kenilworth Borough	18	18	24	16	5	0	0	2,697,950	3,432,813	15,000	4,525,719	4,525,719	4,525,719
Linden City	117	117	119	72	18	9,846	0	17,681,740	9,285,140	47,410,341	12,630,300	12,630,300	12,630,300
Mountainside Borough	5	5	17	6	5	0	0	1,163,600	9,802,249	0	2,853,922	2,853,922	2,853,922

MUNICIPAL SUMMARY DATA, 2006

AREA NAME	AUTHORIZED HSG UNITS		AUTHORIZED HSG UNITS (CENSUS DEFINITIONS)	HSG UNITS CERTIFIED	DEMO-LITATIONS	OFFICE SQ.FT. AUTHORIZED BY BUILDING PERMITS		RETAIL SQ.FT. AUTHORIZED BY BUILDING PERMITS		RESIDENTIAL (\$ AMOUNT)		NONRESIDENTIAL (\$ AMOUNT)	
	HSG UNITS	NEW CONSTR ONLY				AUTHORIZED BY BUILDING PERMITS	RETAIL SQ.FT. AUTHORIZED BY BUILDING PERMITS	NEW CON-STRUC-TION	ADDITIONS & ALTERATIONS	NEW CON-STRUC-TION	ADDITIONS & ALTERATIONS	NEW CON-STRUC-TION	ADDITIONS & ALTERATIONS
New Providence Borough	54		65	31	4	0	10,424	4,657,000	12,732,199	6,100	5,540,640		
Plainfield City	21	20	25	4	5	0	0	2,880,203	11,937,196	0	569,263		
Rahway City	316	316	368	396	26	0	0	45,759,601	21,541,681	39,594,500	5,089,300		
Roselle Park Borough	4	4	4	2	0	32,124	0	445,000	4,228,489	6,847,000	248,292		
Scotch Plains Township	71	70	10	4	4	3,572	0	745,200	3,349,505	124,200	747,577		
Springfield Township	96	96	136	49	1	80	0	13,402,060	26,420,780	1,333,000	136,205		
Summit City	11	10	9	18	13	39,579	0	2,936,040	10,531,022	2,336,001	9,498,408		
Union Township	28	28	32	18	0	8,331	0	9,221,087	41,047,243	14,520,951	44,318,010		
Wesfield Town	88	88	81	88	81	31,752	59,892	3,535,412	13,096,349	30,085,232	24,141,249		
Winfield Township	0	0	0	0	0	144,731	0	22,171,905	44,243,543	6,981,196	6,873,752		
Warren County													
Allamuchy Township	180	180	180	88	0	0	0	11,982,446	0	100,462	1,878,549		
Alpha Borough	2	2	3	1	0	0	0	667,150	744,281	0	526,299		
Belvidere Town	1	1	1	0	0	0	0	125,000	650,958	17,500	709,261		
Blairstown Township	24	24	26	24	1	30,850	0	4,916,011	1,547,800	1,581,462	2,445,375		
Franklin Township	5	5	4	9	0	0	4,800	2,054,600	716,450	2,463,401	1,285,407		
Frelinghuysen Township	10	10	13	10	1	0	0	2,360,525	489,316	1,101,251	642,191		
Greenwich Township	2	2	2	4	1	48,547	0	740,600	1,478,114	2,826,100	2,250,985		
Hackettstown Town	19	19	62	17	0	0	0	1,204,601	383,835	829,916	3,311,629		
Hardwick Township	2	2	8	0	0	0	0	1,918,280	739,928	197,600	104,906		
Harmony Township	6	6	6	9	9	0	0	667,317	1,115,146	3,044,390	7,112,979		
Hope Township	5	5	5	10	1	0	0	1,201,000	722,563	197,600	104,906		
Independence Township	4	4	11	3	2	7,063	0	928,000	1,349,273	542,913	356,580		
Knowlton Township	10	10	10	12	2	240	0	2,612,433	3,400	379,240	1,038,274		
Liberty Township	14	14	11	9	2	0	0	3,090,425	594,659	49,600	179,597		
Lopatcong Township	23	23	45	57	0	10,458	0	2,951,200	1,802,920	2,587,384	756,820		
Mansfield Township	9	7	7	3	7	45	37,777	1,188,000	2,284,975	1,619,550	9,095,253		
Oxford Township	4	4	4	2	0	0	0	166,500	567,582	34,360	175,830		
Pahaquary Township													
Phillipsburg Town	17	17	21	6	2	0	0	2,006,855	5,222,480	31,886	3,406,648		
Pohatcong Township	2	2	9	3	4	0	0	423,052	1,475,490	165,800	2,042,321		
Washington Borough	3	3	3	3	1	1,300	0	282,150	1,595,715	11,008	4,636,962		
Washington Township	6	6	6	23	8	7,800	0	1,196,403	1,861,859	381,351	22,257,634		
White Township	36	36	75	31	10	1,472	0	3,788,650	1,228,902	144,300	1,789,679		
STATE BUILDINGS	2	0	0	5	17	537,870	934,473	1,184,127	1,998,156	247,538,080	106,010,118		
NEW JERSEY 2006	32,050	30,440	34,323	28,564	6,460	11,113,555	5,186,662	\$4,659,727,263	\$3,661,158,486	\$2,652,358,714	\$4,701,863,492		
NEW JERSEY 2005	39,688	38,228	38,588	31,047	6,926	11,038,132	5,965,258	\$5,635,580,818	\$3,491,614,132	\$2,542,244,063	\$3,728,068,134		
NEW JERSEY 2004	39,254	38,170	35,936	27,950	6,706	12,219,068	4,911,257	\$4,826,244,868	\$3,146,414,662	\$2,657,540,638	\$3,644,131,682		

MUNICIPAL SUMMARY DATA, 2006

AREA NAME	AUTHORIZED HSG UNITS		AUTHORIZED HSG UNITS (CENSUS DEFINITIONS)	HSG UNITS CERTIFIED	DEMOLITIONS	OFFICE SQ FT AUTHORIZED BY BUILDING PERMITS		RETAIL SQ FT AUTHORIZED BY BUILDING PERMITS		RESIDENTIAL (\$ AMOUNT)		NONRESIDENTIAL (\$ AMOUNT)	
	HSG UNITS NEW CONSTR ONLY	HSG UNITS				BY BUILDING PERMITS	BY BUILDING PERMITS	NEW CON-STRUCTION	ADDITIONS & ALTERATIONS	NEW CON-STRUCTION	ADDITIONS & ALTERATIONS	NEW CON-STRUCTION	ADDITIONS & ALTERATIONS
NEW JERSEY 2003	35,171	33,239	32,984	26,932	5,006	9,744,146	6,038,428	\$4,017,954,249	\$2,656,364,425	\$2,282,088,755	\$3,192,340,378		
NEW JERSEY 2002	34,589	33,103	30,441	29,174	5,182	9,261,054	7,560,913	\$3,792,545,046	\$2,417,941,675	\$2,510,589,301	\$3,358,866,077		
NEW JERSEY 2001	35,680	34,038	28,267	30,054	4,471	19,134,533	7,244,833	\$3,652,784,997	\$2,103,761,495	\$3,168,465,339	\$3,082,444,799		
NEW JERSEY 2000	38,065	37,125	34,585	29,705	4,304	15,531,039	6,063,412	\$3,665,596,681	\$1,910,007,075	\$2,447,993,792	\$3,130,274,961		
NEW JERSEY 1999	37,536	36,416	31,976	28,109	4,134	13,237,891	6,226,471	\$3,629,928,622	\$1,747,234,475	\$2,447,993,792	\$2,759,010,641		
NEW JERSEY 1998	35,676	34,714	31,345	28,008	2,967	12,703,824	7,921,892	\$3,257,553,918	\$1,561,291,134	\$2,056,639,495	\$2,527,270,970		
NEW JERSEY 1997	30,017	29,376	28,018	34,670	4,985	10,490,171	5,688,955	\$2,687,476,911	\$1,395,565,016	\$1,861,752,185	\$2,401,739,002		
NEW JERSEY 1996	27,577	27,409	24,173	22,239	2,736	6,229,515	4,880,139	\$2,365,293,584	\$1,274,286,211	\$1,359,946,498	\$2,028,898,697		

THE NEW JERSEY CONSTRUCTION REPORTER SUBSCRIPTION ORDER FORM

✂

The New Jersey Construction Reporter

Price

- | | |
|---|---------|
| <input type="checkbox"/> 12-Month Subscription (includes Annual Report) | \$50.00 |
| <input type="checkbox"/> Single-Copy Price: Volume _____ Issue _____ Data for _____ | 5.00 |
| <input type="checkbox"/> Annual Report: Year _____ | 25.00 |

PREPAYMENT REQUIRED

MAKE CHECK OR MONEY ORDER PAYABLE TO: "Treasurer, State of New Jersey"

MAIL TO: The New Jersey Construction Reporter, Division of Codes and Standards,
New Jersey Department of Community Affairs, 101 South Broad Street,
PO Box 802, Trenton, New Jersey 08625

TOTAL AMOUNT ENCLOSED: \$ _____

NAME and TITLE: _____

AGENCY: _____

ADDRESS: _____

CITY: _____ STATE: _____ ZIP: _____

TELEPHONE: (____) _____



Prepared by the
Division of Codes and Standards
Department of Community Affairs
State of New Jersey
101 South Broad Street
Post Office Box 802
Trenton, New Jersey 08625
(609) 292-7898

Charles A. Richman, Acting Commissioner
William M. Connolly, Director
Cynthia A. Wilk, Deputy Director

in cooperation with the
State Data Center of the
New Jersey Department of Labor

Production and Distribution Staff

Richard Byrne
Lynn Ferrara
Mary Ellen Handelman
Cecilia Heredia
John Lago
Charles Pierson, Jr.
Susan Woidill

2007

