

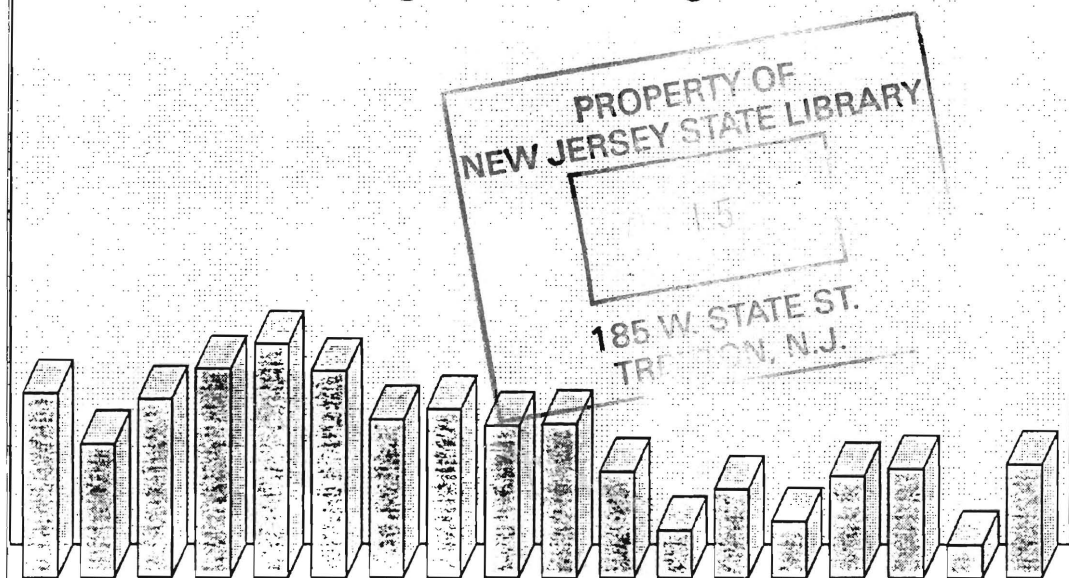
974.905
844.4
c. 2

State of New Jersey
Department of Human Services
Division of Family Development

CURRENT PROGRAM STATISTICS

January 1995

Karen Highsmith, Acting Director



State of New Jersey
Department of Human Services
Division of Family Development

**CURRENT PROGRAM STATISTICS
JANUARY 1995**

TABLE OF CONTENTS

	Page
Highlights of Current Program Statistics	1-3
 Statistics by County, January 1995	
Table 1 AFDC.....	4
Graph 1 Current AFDC Families	5
Table 2 Food Stamp Program.....	6
Graph 2 Current Food Stamp Households/Persons	7
Table 3 Emergency Assistance Program	8
Graph 3 Current Families Receiving Emergency Assistance.....	9
Table 4 JOBS & Family Development Programs	10
 State Summary, 1993 - 1995	
Table 5 AFDC, January 1993 - January 1995	11
Graph 4 Families Receiving AFDC, 1/93-1/95	12
Table 6 Food Stamp Program, January 1993 - January 1995	13
Graph 5 Food Stamp Households, 1/93-1/95	14
Graph 6 Food Stamp Recipients, 1/93-1/95	15
Table 7 Emergency Assistance Program, Jan. 1993 - Jan. 1995.....	16
Graph 7 AFDC Families Receiving Emergency Assistance 1/93-1/95	17
Table 8 JOBS/FDP Participation Rates, by County and Statewide, July 1993 - January 1995	18
Graph 8 JOBS/FDP Participation Rates, 7/93-1/95	19
Table 9 General Assistance, January 1993 -June 1994	20
Graph 9 General Assistance Recipients 1/93 - 6/94.....	21
Table 10 Child Support and Paternity 1993-1994	22
 Explanatory Notes	 23-24

Highlights of Current Program Statistics

AFDC (Tables 1 and 5, Graphs 1 and 4)

121,923 eligible families in New Jersey were receiving AFDC as of the end of January 1995.

About 109,600 were single head of household families (Regular AFDC, C segment).

Among two-parent families, Unemployed Parents (F Segment) accounted for 3900, and State AFDC (N Segment) for 3400. There were more than 5000 Medicaid Only families.

By County, the largest numbers were in Essex with about 30,600 families, Hudson with 19,300, and Camden County with over 13,800. They accounted for more than 52 percent of all AFDC families.

The other counties ranged from 219 families in Hunterdon to 7,861 in Passaic County.

The number of eligible families in January 1995 is below the level of January 1993 for the first time, and has declined every month since the peak in May/June 1994 of over 124,600, a drop of about 2700 or more than two percent. There was also a peak of 124,000 in May/June 1993.

Regular AFDC (C segment) peaked at nearly 111,800 in June 1994 then declined more than 2100 by January 1995 to 109,645, the first time below 110,000 in two years.

F segment families peaked in both May 1993 and May 1994. After declining from over 4500 in May 1994 to less than 3800 by December, the number increased by about 100 in January 1995.

State AFDC (N segment) grew from 2547 families in January 1993 to 3483 by May 1994 (almost 37 percent), but has remained nearly unchanged since.

The Medicaid Only group has hovered around 5000 families since January 1993.

FOOD STAMP PROGRAM (Tables 2 and 6, Graphs 2, 5, and 6)

At the end of January 1995, 221,200 households were participating in the Food Stamp Program.

About 113,700 were AFDC households and 107,500 were Other Low Income households.

About 48 percent of all Food Stamp Households are in Essex (54,211), Hudson (29,779) and Camden (21,925) Counties.

These households included about 522,000 persons, 245,800 adults and 276,300 children.

In seven counties (Bergen, Hunterdon, Monmouth, Morris, Somerset, Sussex, and Warren) the number of adults exceeds the number of children in Food Stamp households.

Food Stamp households in New Jersey increased from less than 208,000 in January 1993 to about 222,000 in March of 1994, and have remained over 220,000 every month since. The January 1995 level was about 500 less than December 1994.

The numbers of AFDC(FS) households and Other Low Income households continue to converge. There were only 2100 more AFDC(FS) households in January 1995 (113,700) than in January 1993 (111,600), and the level has been declining since June 1994. Other Low Income households increased by 11,500 from 96,000 in January 1993 to about 107,500 in November 1994 through January 1995.

The total number of recipients rose from 504,000 in January 1993 to a more than 530,000 in March through May 1994, then declined to about 522,000 by September 1994, and has remained close to that level.

Recipient adults have increased much more than recipient children. Adults increased by about 14,000, from under 232,000 in January 1993 to nearly 246,000 in January 1995 (with a peak of over 248,000 in March through June 1994). In the same period, recipient children increased by less than 4000, from 272,500 in January 1993 to 276,300 in January 1995; that level has been declining from the peak of 282,700 in March 1994.

EMERGENCY ASSISTANCE (Tables 3 and 7, Graphs 3 and 7)

At the end of January 1995 a total of 6526 eligible AFDC families were receiving Emergency Assistance (EA) in New Jersey.

3607 families were receiving Temporary Rental Assistance (TRA).

There were 604 motel placements and 457 emergency shelter placements.

All other AFDC-EA accounted for 1858 families, including either one-time benefits such as back rent, back utilities, security deposits, furnishings, and clothing and food allowance, or shared or transitional housing.

2451 families in Essex County received EA, including 1935 provided TRA. Middlesex had 648 EA recipient families, and Mercer had 566, while Bergen and Passaic each had over 400. All other counties had between 18 and 349 with eight under 100.

AFDC families receiving Emergency Assistance reached almost 8500 in May 1993, then declined to less than 7000 by December 1993. Similarly, in 1994 the number reached nearly 7700 in April and July, then declined to about 6500 by December, as well as January 1995.

The decline in the number of Families receiving Temporary Rental Assistance accounted for most of the decline in EA during 1993-1994. At almost 4900 in May 1993, it declined to less than 4000 in December 1993, remained between 4100 and 4300 through July 1994, and declined the rest of the year to about 3600 by January 1995.

Motel placements declined from close to 800 in January 1993 to around 600 in January 1994 and January 1995. All intervening months remained between 600 and 750 during the two year period.

Emergency shelter placements peaked at 573 in October 1993, and have remained below 500 since then.

During the period, All Other AFDC-EA fluctuated between a high of 2498 in May 1993 and a low of 1713 in December 1994.

JOBS/FDP PARTICIPATION RATES (Table 8, Graph 8)

Statewide participation in the JOBS/FDP Program has had three troughs, in August 1993 at 12.5 percent, January/February 1994 at 16 percent, and again in August 1994 at 16.3 percent. It reached a new high in October 1994 at 21.8 percent, and remained nearly unchanged through December. The decline of more than one percent between December 1994 and January 1995 was similar to that of a year earlier. A gradual upward shift can be seen in the overall pattern.

Most counties have shown a similar pattern, with a rebound through October 1993. Several experienced declines in the 1993/1994 Winter months and then continued upward again in March 1994. Most counties declined from May through August 1994, then turned upward in September and October 1994. Rates remained fairly stable through December 1994, but declined in seventeen counties in January 1995.

Essex county's rate has consistently remained under 10 percent, as has Cape May except for three months. In most counties rates have been between 10 and 30 percent. Atlantic, Cumberland, Salem, Somerset, and Sussex generally exceeded 30 percent. Warren exceeded 60 percent from June 1994 through October 1994.

GENERAL ASSISTANCE (Table 9, Graph 9)

For the period January 1993 through June 1994 (the latest available information), the number of GA recipients peaked at about 37,400 in March 1993 and again at 38,100 in March 1994. The number has since declined to 37,000 in June.

During the same period, the number of employable recipients fluctuated between 23,000 and 26,000. There were also peaks in March 1993 (25,900) and March 1994 (26,400). The June 1994 level of 24,800 was about 800 more than a year earlier.

The number of Unemployable GA recipients remained almost unchanged in the period, staying between 11,000 and 11,700. In May 1994, Unemployables grew by almost 600 to 12,200, the highest level in 1993-94, and stayed about the same in June.

CHILD SUPPORT AND PATERNITY (Table 10)

Total collections of the Child Support and Paternity Program grew from about \$438 million to more than \$510 million from FY1993 to FY1994, an increase of 16.6 percent. Total AFDC/Foster Care collections remained almost unchanged at around \$92 million. Non-AFDC collections grew from less than \$346 million to almost \$418 million, or 21 percent.

For the six months ended December 1994 (1st half FY1995), AFDC/Foster Care Collections were up 1.3 percent from a year earlier, led by a million dollar increases in income withholdings and about 1.5 million in collections from other states. Non-AFDC collections were up 16 percent, or about \$22 million more. Most of the increase was in Income Withholding, Other/Own Behalf, and For Other States.

New Jersey Department
of Human Services
Division of Family Development

TABLE 1
AFDC Program

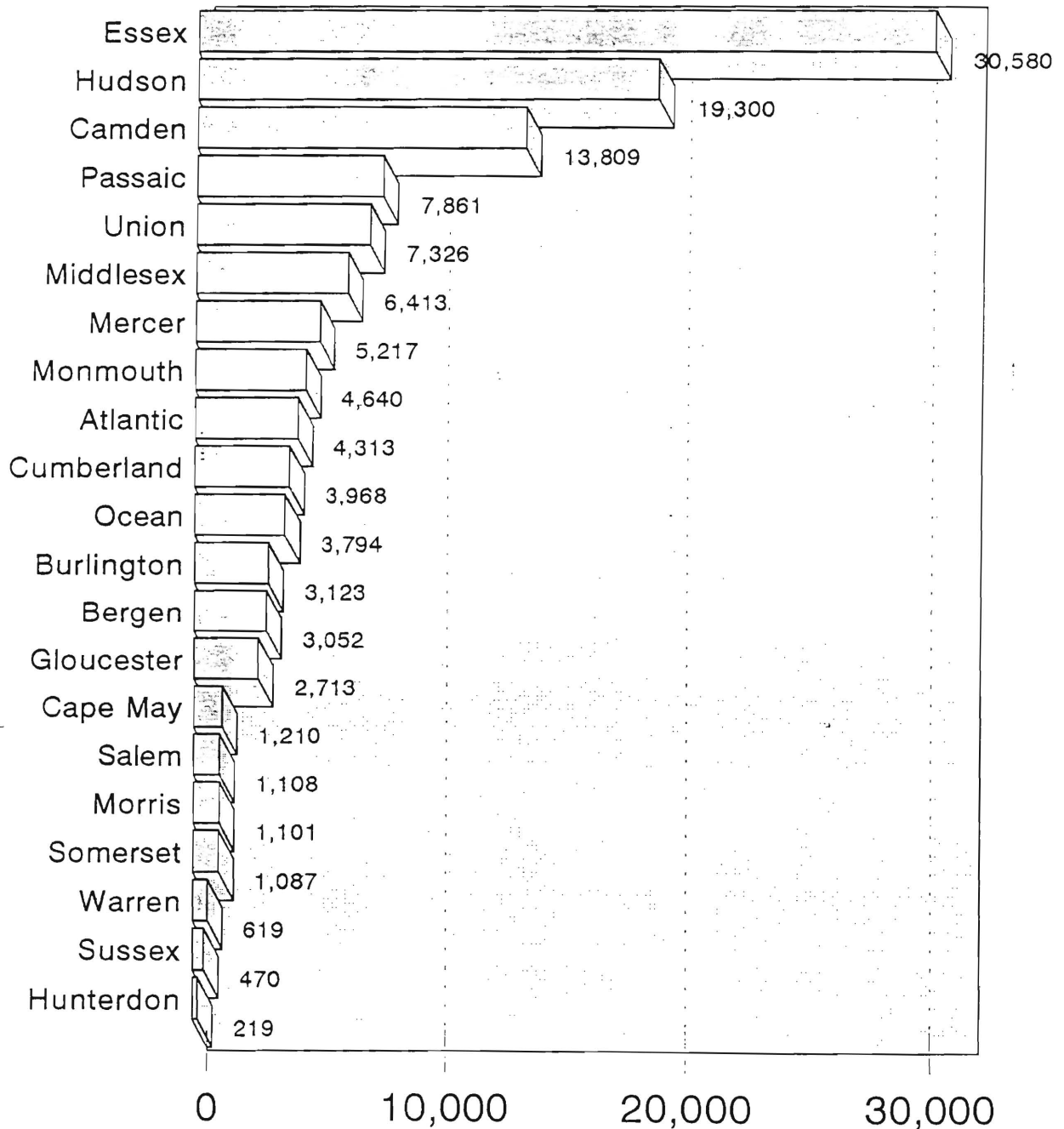
NUMBER OF APPLICATIONS AND TERMINATIONS DURING REPORT MONTH,
AND NUMBER OF ELIGIBLE FAMILIES RECEIVING AFDC AT END OF REPORT
MONTH

January 1995

County	Applications Approved	Terminations	Regular AFDC (C Segment)	Unemployed Parents (F)	State AFDC (N)	Medicaid Only	TOTAL AFDC
Atlantic	285	280	3,933	133	87	160	4,313
Bergen	128	145	2,634	185	130	103	3,052
Burlington	259	259	2,718	108	87	210	3,123
Camden	710	792	12,062	644	354	749	13,809
Cape May	130	71	996	99	61	54	1,210
Cumberland	253	218	3,366	184	176	242	3,968
Essex	888	990	29,042	545	253	740	30,580
Gloucester	220	224	2,328	136	87	162	2,713
Hudson	523	600	17,331	409	626	934	19,300
Hunterdon	16	13	182	11	13	13	219
Mercer	406	405	4,768	111	102	236	5,217
Middlesex	318	384	5,335	270	338	470	6,413
Monmouth	266	271	4,271	108	193	68	4,640
Morris	57	68	951	51	44	55	1,101
Ocean	197	210	3,167	223	191	213	3,794
Passaic	329	319	7,168	327	294	72	7,861
Salem	85	96	987	24	32	65	1,108
Somerset	103	132	876	60	35	116	1,087
Sussex	41	43	376	33	16	45	470
Union	330	384	6,648	173	207	298	7,326
Warren	39	40	506	41	32	40	619
<hr/>							
NJ TOTAL	5,583	5,944	109,645	3,875	3,358	5,045	121,923

Data Sources: Data is derived from NJ Division of Family Development's FAMIS report # FF-012.

Current AFDC Families January 1995, By County



New Jersey Department of Human Services
Division of Family Development

TABLE 2

FOOD STAMP Program

NUMBER OF ATP'S ISSUED TO HOUSEHOLDS,
PERSONS, ADULTS AND CHILDREN AT THE END OF THE REPORT MONTH

January 1995

County	Households			Persons				
	AFDC	Other low income	TOTAL	TOTAL	AFDC	Other low income	Adults	Children
Atlantic	4,222	4,691	8,913	20,059	13,383	6,676	9,666	10,393
Bergen	2,804	5,262	8,066	16,461	8,298	8,163	9,437	7,024
Burlington	2,754	3,053	5,807	13,408	8,348	5,060	6,565	6,843
Camden	13,035	8,890	21,925	55,666	42,654	13,012	24,732	30,934
Cape May	1,198	1,397	2,595	6,595	4,064	2,531	3,183	3,412
Cumberland	3,838	2,718	6,556	17,369	12,856	4,513	7,847	9,522
Essex	29,195	25,016	54,211	126,452	90,342	36,110	58,196	68,256
Gloucester	2,423	1,861	4,284	10,838	7,608	3,230	4,997	5,841
Hudson	17,822	11,957	29,779	72,580	54,548	18,032	32,260	40,320
Hunterdon	180	366	546	1,119	557	562	636	483
Mercer	4,792	4,386	9,178	20,475	14,677	5,798	9,583	10,892
Middlesex	5,843	5,576	11,419	26,145	17,530	8,615	12,766	13,379
Monmouth	4,376	6,325	10,701	23,419	13,796	9,623	11,994	11,425
Morris	920	1,895	2,815	5,811	2,775	3,036	3,276	2,535
Ocean	3,648	4,532	8,180	20,657	11,946	8,711	9,736	10,921
Passaic	7,298	8,812	16,110	38,835	24,033	14,802	18,255	20,580
Salem	1,018	903	1,921	4,755	3,286	1,469	2,181	2,574
Somerset	1,043	1,745	2,788	5,496	2,958	2,538	3,010	2,486
Sussex	418	686	1,104	2,619	1,343	1,276	1,386	1,233
Union	6,259	6,438	12,697	29,622	19,848	9,774	14,175	15,447
Warren	605	984	1,589	3,744	1,913	1,831	1,956	1,788
NJ TOTAL	113,691	107,493	221,184	522,125	356,763	165,362	245,837	276,288

ATP - Authorization to Participate, may include some duplication

Data Sources: Data is derived from NJ Division of Family Development's FAMIS report # FB-160.

Food Stamp Households January 1995, By County

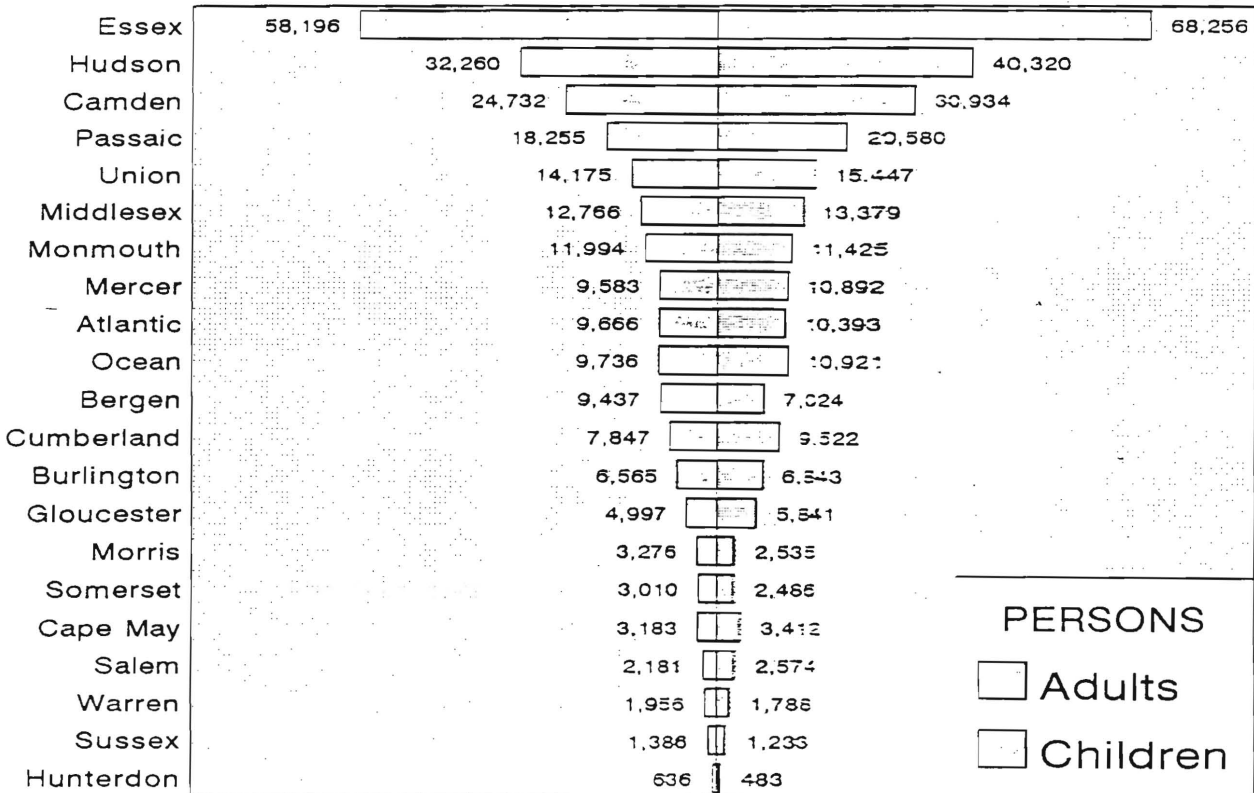
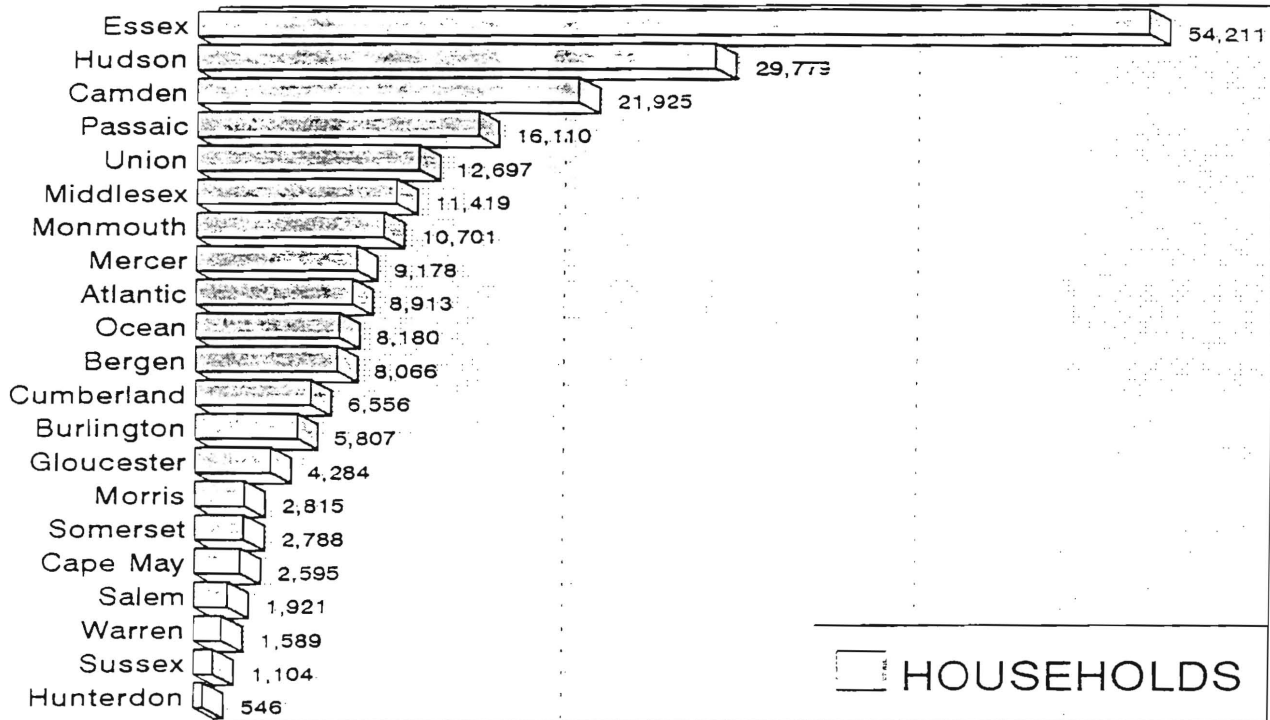


TABLE 3

EMERGENCY ASSISTANCE Program for AFDC recipients

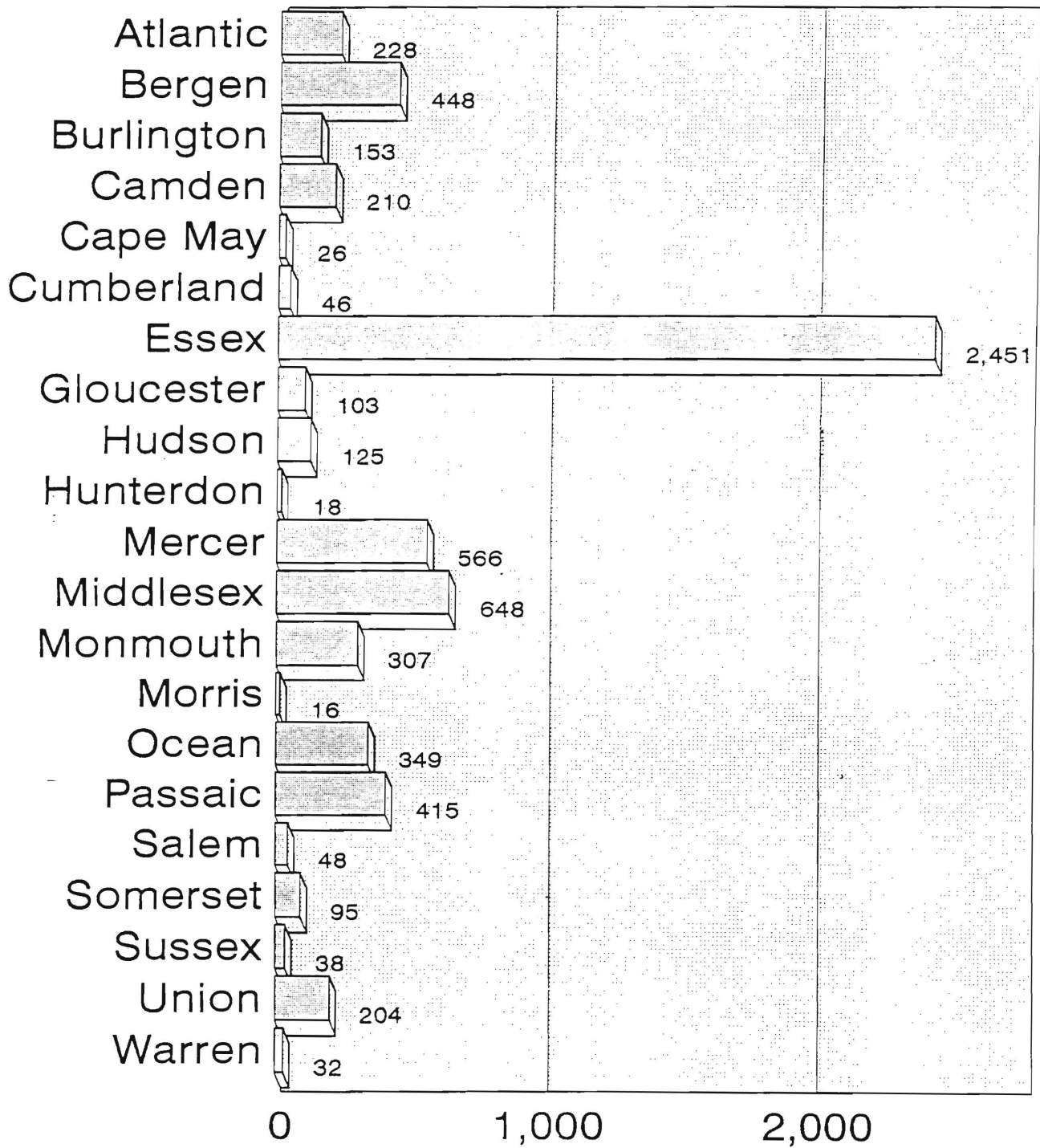
NUMBER OF APPLICATIONS AND TERMINATIONS DURING REPORT MONTH,
AND ELIGIBLE FAMILIES RECEIVING EMERGENCY ASSISTANCE
AT END OF REPORT MONTH

January 1995

County	Applications Approved	Terminations	Total families receiving EA	Temporary rental assist.	Motel Housing	Emergency Shelter	Other AFDC-EA
Atlantic	200	78	228	113	23	17	75
Bergen	60	78	448	358	37	26	27
Burlington	79	29	153	28	5	39	81
Camden	136	145	210	52	5	45	108
Cape May	21	19	26	6	4	0	16
Cumberland	38	21	46	4	7	26	9
Essex	585	106	2,451	1,935	116	122	278
Gloucester	23	47	103	69	8	22	4
Hudson	53	57	125	52	3	22	48
Hunterdon	3	6	18	12	2	3	1
Mercer	110	151	566	149	57	4	356
Middlesex	87	237	648	388	26	29	205
Monmouth	30	68	307	132	79	1	95
Morris	5	12	16	0	4	11	1
Ocean	82	93	349	202	143	4	0
Passaic	460	377	415	6	14	29	366
Salem	47	23	48	21	19	2	6
Somerset	27	26	95	23	9	18	45
Sussex	14	7	38	11	17	5	5
Union	348	285	204	46	11	27	120
Warren	11	18	32	0	15	5	12
NJ TOTAL	2,419	1,883	6,526	3,607	604	457	1,858

Data Sources: Data is compiled by County Welfare Agencies & reported to the
NJ Division of Family Development on report form # PA-217.

Current Families Receiving Emergency Assistance January 1995, By County



NEW JERSEY DEPARTMENT OF HUMAN SERVICES
DIVISION OF FAMILY DEVELOPMENT

TABLE 4
JOBS & FAMILY DEVELOPMENT PROGRAMS
STATISTICAL SUMMARY

COUNTY	SNAPSHOT OF ACTIVITY AS OF JANUARY 1995				ACTIVITY FOR MONTH OF JANUARY 1995					
	TOTAL NONE/EXT JOBS/FDP RECI- PIENTS	EMPLOYMENT DIRECTED ACTIVITIES(1)			PARTIC IN EDAs & RECSUP SERV		PARTIC W/ Lst CM INTV	# EMPL THIS MONTH & STILL RECAFDC	# CLSD ON FAMIS RE: EARNGS(2)	POST AFDC & REC CH CARE
		TRAIN- ING	EDUCA- TION	JOB SEARCH	TREs	CHILD CARE				
ATLANTIC *	1,915	341	290	51	385	229	184	39	53	139
BERGEN	1,684	224	144	137	141	110	53	11	48	63
BURLINGTON	1,394	207	139	22	227	130	92	41	44	136
CAMDEN *	8,112	337	648	34	692	710	140	30	136	204
CAPE MAY	749	24	54	0	39	10	16	1	17	3
CUMBERLAND *	1,924	316	277	32	572	296	273	23	61	136
ESSEX *	16,357	531	527	79	885	594	114	22	148	110
GLOUCESTER	1,117	187	159	43	334	131	38	9	30	66
HUDSON *	12,181	663	1,345	15	1,729	958	243	22	122	197
HUNTERDON	131	7	23	5	5	5	8	6	4	5
MERCER *	2,920	243	273	51	236	231	96	18	86	103
MIDDLESEX	2,904	284	191	33	224	135	232	23	65	104
MONMOUTH	2,456	244	256	57	387	274	123	23	64	163
MORRIS	487	22	34	6	29	17	24	0	16	24
OCEAN	1,938	196	205	94	132	123	213	17	63	6
PASSAIC *	3,898	560	433	56	809	346	227	16	85	128
SALEM	466	58	96	7	116	92	28	4	13	62
SOMERSET	517	60	113	11	76	76	40	10	18	54
SUSSEX	271	26	62	47	34	27	9	3	16	22
UNION *	3,939	322	399	103	568	274	233	16	62	101
WARREN	369	29	66	60	15	18	7	5	12	16
STATE	65,729	4,881	5,734	943	7,635	4,786	2,393	339	1,163	1,842

* - County participates in the Family Development Program.

(1) - The number of participants receiving support services may occasionally exceed the number actively participating in EDAs. This can result from extended assessment or evaluation activities or, the issuance of bridge payments.

(2) - FAMIS file date 1/21/95

New Jersey Department of Human Services
Division of Family Development

TABLE 5
AFDC Program State Summary

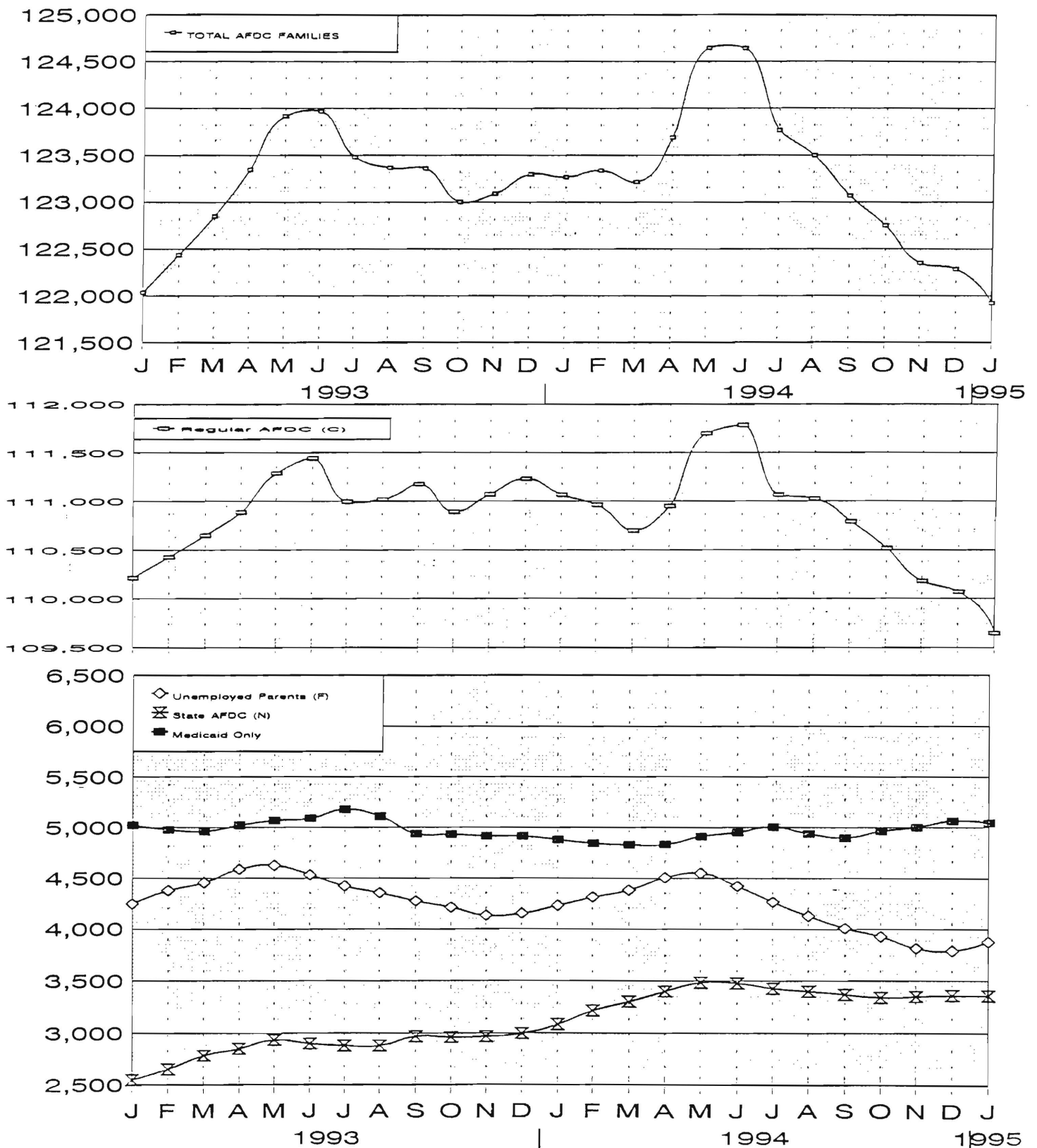
NUMBER OF APPLICATIONS AND TERMINATIONS DURING REPORT MONTH,
AND NUMBER OF ELIGIBLE FAMILIES RECEIVING AFDC AT END OF REPORT MONTH

January 1993 through January 1995

		Applications Approved	Termin- ations	Regular AFDC (C Segment)	Unemployed Parents (F)	State AFDC (N)	Medicaid Only	TOTAL AFDC
1993	Jan	5,536	4,930	110,215	4,248	2,547	5,024	122,034
	Feb	5,564	5,325	110,428	4,379	2,650	4,978	122,435
	Mar	5,515	5,207	110,651	4,455	2,782	4,962	122,850
	Apr	5,680	5,467	110,888	4,587	2,850	5,021	123,346
	May	6,532	5,947	111,290	4,626	2,935	5,068	123,919
	Jun	5,360	5,330	111,445	4,533	2,898	5,091	123,967
	Jul	5,292	5,771	110,996	4,424	2,880	5,179	123,479
	Aug	6,103	6,235	111,020	4,355	2,879	5,111	123,365
	Sep	5,795	5,857	111,177	4,274	2,969	4,939	123,359
	Oct	5,380	5,820	110,893	4,213	2,961	4,934	123,001
	Nov	6,774	6,902	111,072	4,131	2,969	4,916	123,088
	Dec	5,590	5,462	111,231	4,152	2,997	4,915	123,295
AVERAGE		5,760	5,688	110,942	4,365	2,860	5,012	123,178
1994	Jan	5,452	5,349	111,067	4,232	3,085	4,881	123,265
	Feb	5,449	5,518	110,964	4,314	3,214	4,844	123,336
	Mar	5,693	5,893	110,699	4,383	3,301	4,831	123,214
	Apr	6,284	5,997	110,951	4,506	3,399	4,834	123,690
	May	7,094	6,188	111,700	4,549	3,483	4,913	124,645
	Jun	5,758	5,742	111,787	4,423	3,477	4,953	124,640
	Jul	5,117	5,898	111,064	4,266	3,428	5,007	123,765
	Aug	6,435	6,827	111,025	4,128	3,401	4,940	123,494
	Sep	6,266	6,754	110,790	4,007	3,369	4,900	123,066
	Oct	6,592	6,950	110,517	3,927	3,340	4,966	122,750
	Nov	6,344	6,796	110,181	3,814	3,350	5,002	122,347
	Dec	5,682	5,890	110,070	3,789	3,360	5,065	122,284
AVERAGE		6,014	6,150	110,901	4,195	3,351	4,928	123,375
1995	Jan	5,583	5,944	109,645	3,875	3,358	5,045	121,923

Eligible Families Receiving AFDC

January 1993 through January 1995



New Jersey Department of Human Services
Division of Family Development

TABLE 6
FOOD STAMP Program State Summary

NUMBER OF ATP'S ISSUED TO HOUSEHOLDS,
PERSONS, ADULTS AND CHILDREN AT THE END OF THE REPORT MONTH

January 1993 through January 1995

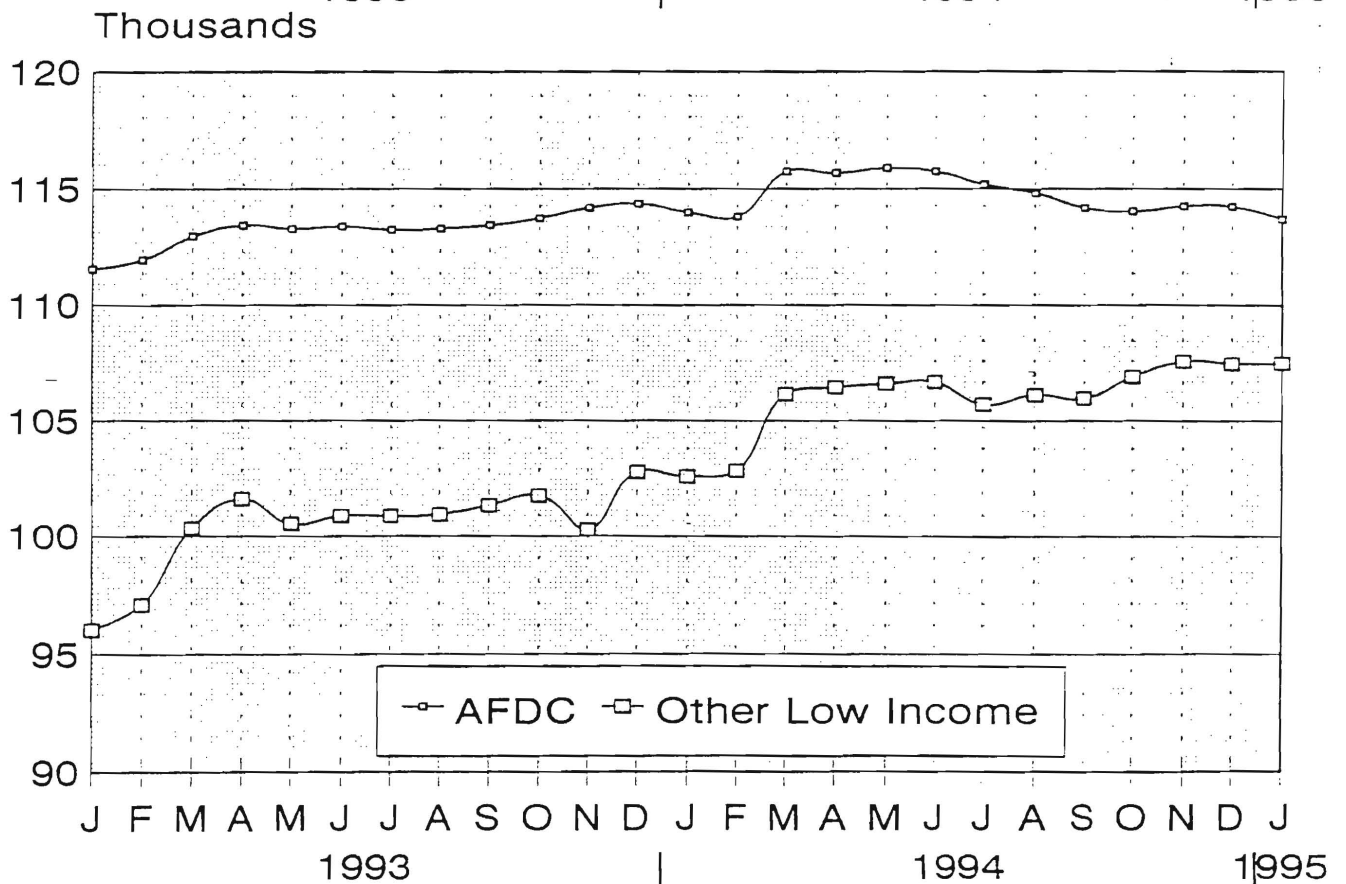
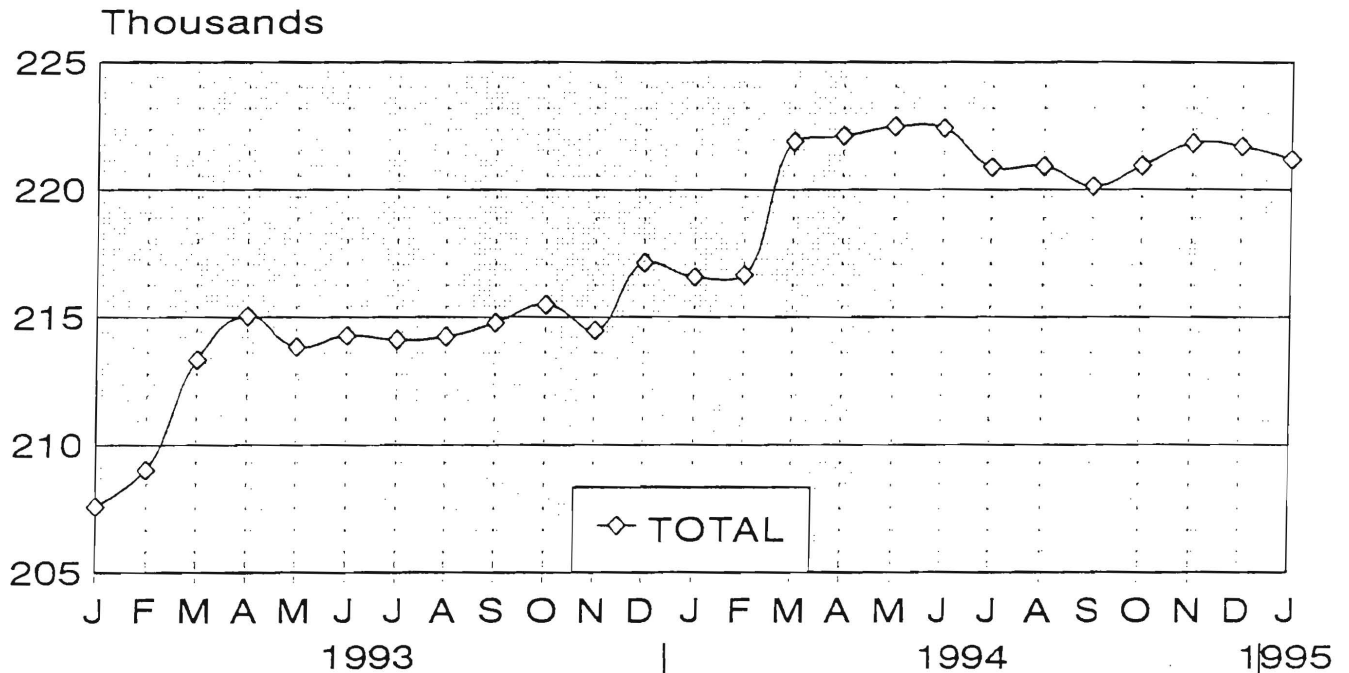
County	AFDC	Households		TOTAL	TOTAL	Persons		Adults	Children
		Other low income				AFDC	Other low income		
1993	Jan	111,567	96,020	207,587	504,271	352,801	151,470	231,777	272,494
	Feb	111,957	97,058	209,015	507,635	354,149	153,486	233,770	273,865
	Mar	112,965	100,359	213,324	516,142	357,246	158,896	238,723	277,419
	Apr	113,431	101,609	215,040	519,374	358,643	160,731	240,630	278,744
	May	113,282	100,555	213,837	516,825	357,958	158,867	239,134	277,691
	Jun	113,383	100,890	214,273	517,200	358,320	158,880	239,364	277,836
	Jul	113,238	100,872	214,110	516,546	357,867	158,679	238,893	277,653
	Aug	113,292	100,947	214,239	516,113	358,109	158,004	238,801	277,312
	Sep	113,439	101,341	214,780	516,517	358,261	158,256	239,247	277,270
	Oct	113,737	101,753	215,490	517,657	358,804	158,853	239,902	277,755
	Nov	114,180	100,295	214,475	519,932	360,125	159,807	241,029	278,903
	Dec	114,348	102,790	217,138	521,307	360,858	160,449	241,989	279,318
AVERAGE		113,235	100,374	213,609	515,793	357,762	158,032	238,605	277,188
1994	Jan	113,984	102,590	216,574	519,549	359,422	160,127	241,575	277,974
	Feb	113,804	102,843	216,647	519,760	359,227	160,533	241,993	277,767
	Mar	115,730	106,160	221,890	530,892	365,132	165,760	248,219	282,673
	Apr	115,661	106,454	222,115	530,591	365,241	165,350	248,331	282,260
	May	115,874	106,611	222,485	530,595	364,941	165,654	248,420	282,175
	Jun	115,737	106,683	222,420	529,514	364,394	165,120	248,099	281,415
	Jul	115,172	105,717	220,889	526,075	362,520	163,555	246,142	279,933
	Aug	114,809	106,115	220,924	524,659	361,106	163,553	246,052	278,607
	Sep	114,177	105,972	220,149	521,945	358,849	163,096	244,835	277,110
	Oct	114,039	106,903	220,942	522,406	358,010	164,396	245,676	276,730
	Nov	114,251	107,577	221,828	524,090	358,582	165,508	246,659	277,431
	Dec	114,232	107,467	221,699	523,825	358,446	165,379	246,517	277,308
AVERAGE		114,789	105,924	220,714	525,325	361,323	164,003	246,043	279,282
1995	Jan	113,691	107,493	221,184	522,125	356,763	165,362	245,837	276,288

ATP - Authorization to Participate

Data Sources: Data is derived from NJ Division of Family Development's FAMIS report # FB-160.

Food Stamp Households

January 1993 through January 1995



Food Stamp Recipients January 1993 through January 1995

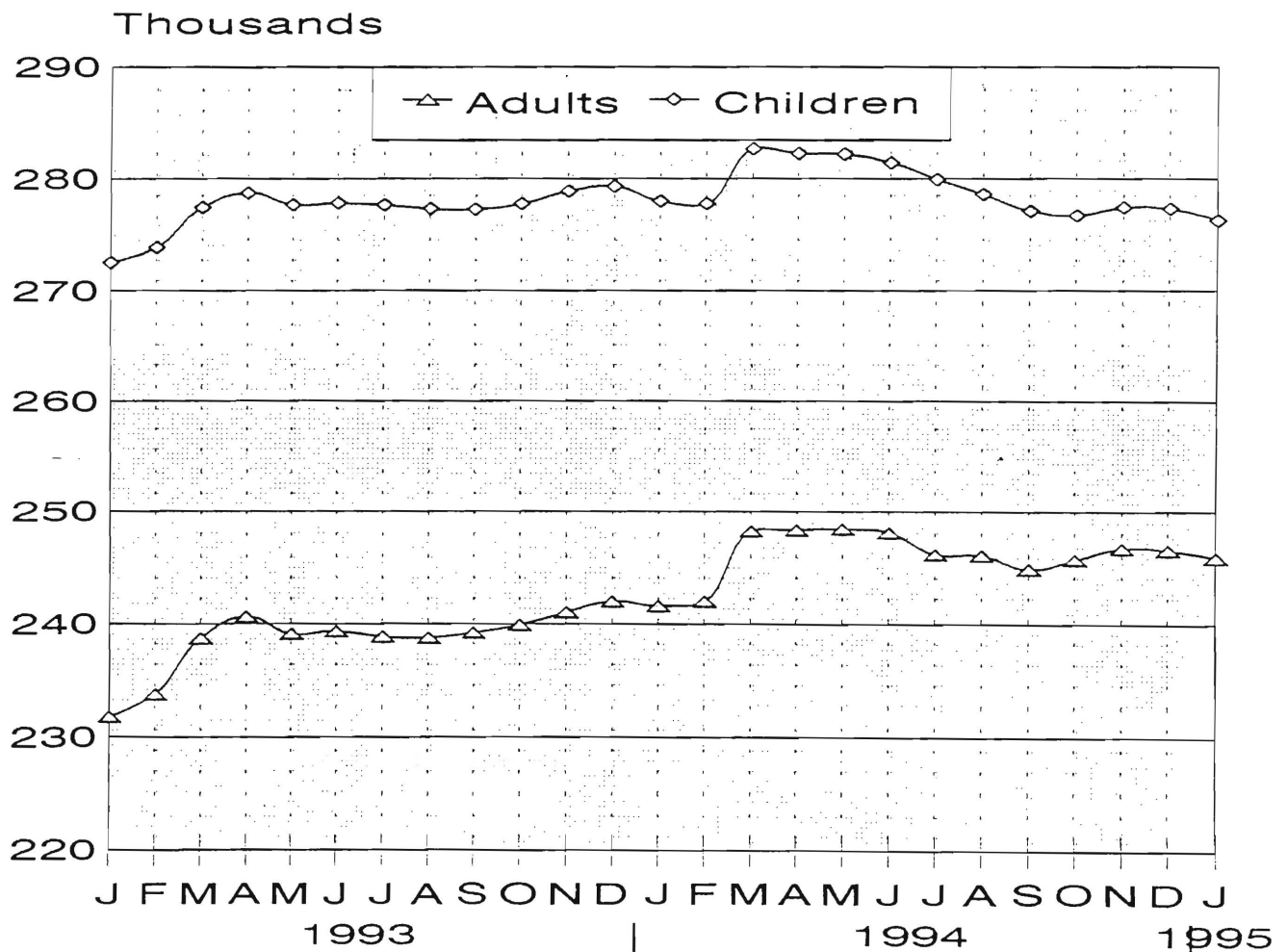
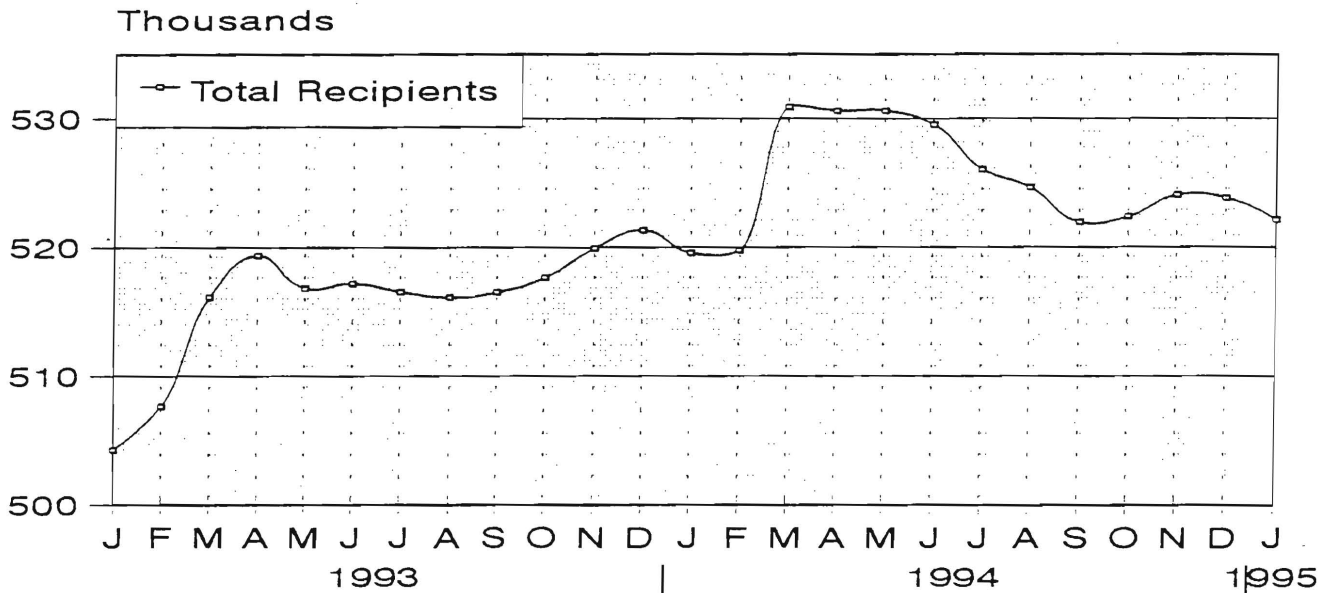


TABLE 7

EMERGENCY ASSISTANCE Program for AFDC recipients State Summary

NUMBER OF APPLICATIONS AND TERMINATIONS DURING REPORT MONTH,
AND NUMBER OF ELIGIBLE FAMILIES RECEIVING EMERGENCY ASSISTANCE
AT END OF REPORT MONTH

January 1993 through January 1995

		Applications Approved	Terminations	Total families receiving EA	Temporary rental assist.	Motel Housing	Emergency Shelter	Other AFDC-EA
1993	Jan	2,661	2,788	8,071	4,779	790	488	2,014
	Feb	2,690	1,887	7,638	4,620	702	482	1,834
	Mar	3,440	2,259	8,020	4,589	711	478	2,242
	Apr	3,679	2,570	8,280	4,542	704	540	2,494
	May	3,051	2,505	8,497	4,866	650	483	2,498
	Jun	3,054	2,477	8,257	4,688	644	467	2,458
	Jul	2,998	2,126	7,842	4,504	701	474	2,163
	Aug	3,388	2,212	7,929	4,372	713	524	2,320
	Sep	2,917	2,360	7,791	4,302	689	526	2,274
	Oct	3,461	2,397	7,806	4,294	681	573	2,258
	Nov	2,867	2,306	7,402	4,053	638	467	2,244
	Dec	2,431	1,810	6,903	3,974	600	457	1,872
AVERAGE		3,053	2,308	7,870	4,465	685	497	2,223
1994	Jan	2,456	2,022	7,252	4,239	579	422	2,012
	Feb	2,019	1,716	6,977	4,131	621	395	1,830
	Mar	3,146	1,911	7,362	4,125	640	468	2,129
	Apr	3,115	2,246	7,689	4,265	607	448	2,369
	May	3,264	2,453	7,036	4,192	637	431	1,776
	Jun	2,945	2,202	7,542	4,145	641	395	2,361
	Jul	2,756	1,866	7,647	4,302	669	419	2,257
	Aug	2,972	2,144	7,285	4,021	749	466	2,049
	Sep	3,173	2,202	7,385	3,919	685	478	2,303
	Oct	2,787	2,125	7,315	3,827	673	466	2,349
	Nov	2,667	1,865	7,013	3,826	695	434	2,058
	Dec	2,313	1,624	6,506	3,693	655	445	1,713
AVERAGE		2,801	2,031	7,251	4,057	654	439	2,101
1995	Jan	2,419	1,883	6,526	3,607	604	457	1,858

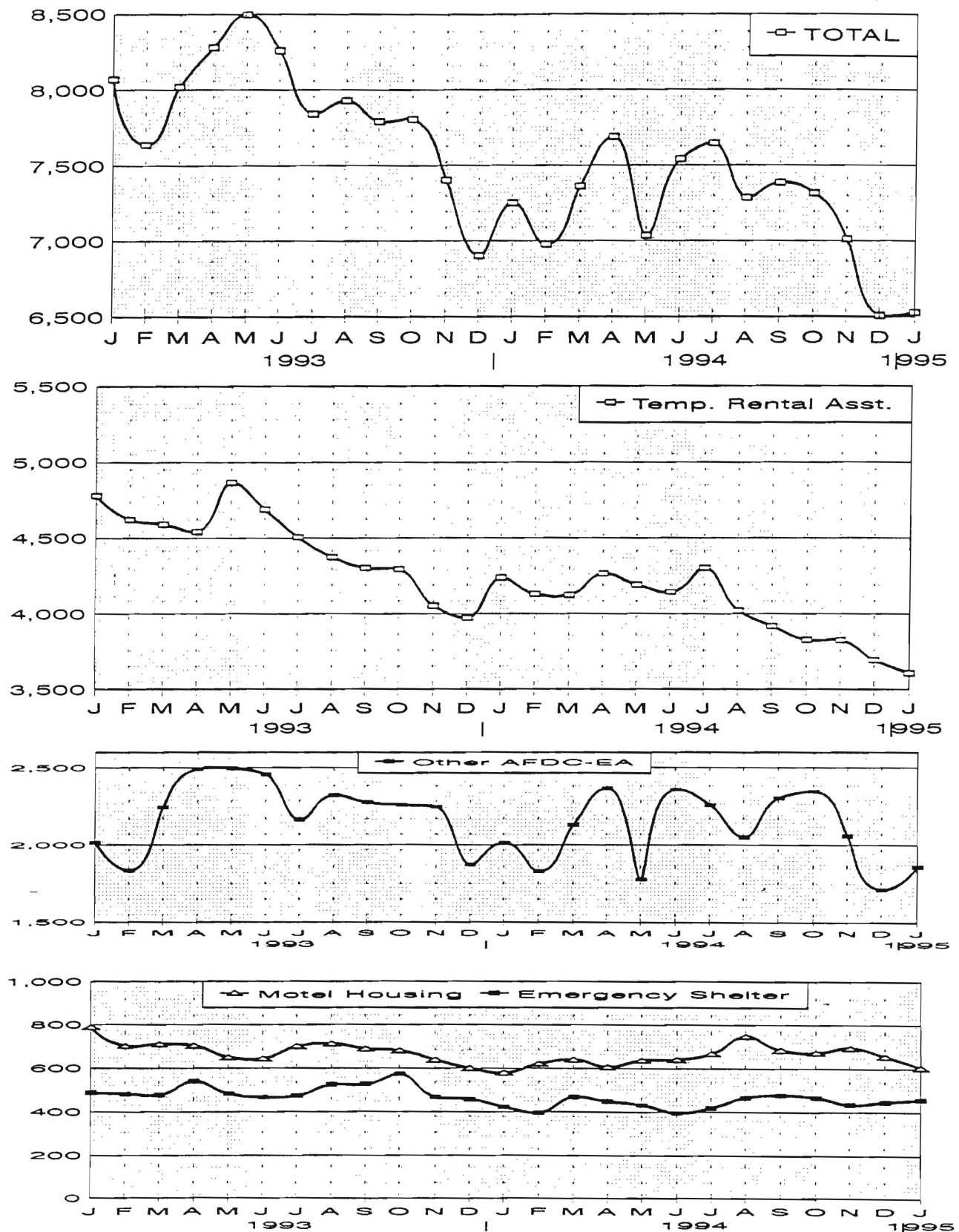
Data Sources: Data is compiled by County Welfare Agencies & reported to the NJ Division of Family Development on report form # PA-217.

GRAPH 7

Page 17

AFDC Families Receiving Emergency Assistance

January 1993 through January 1995

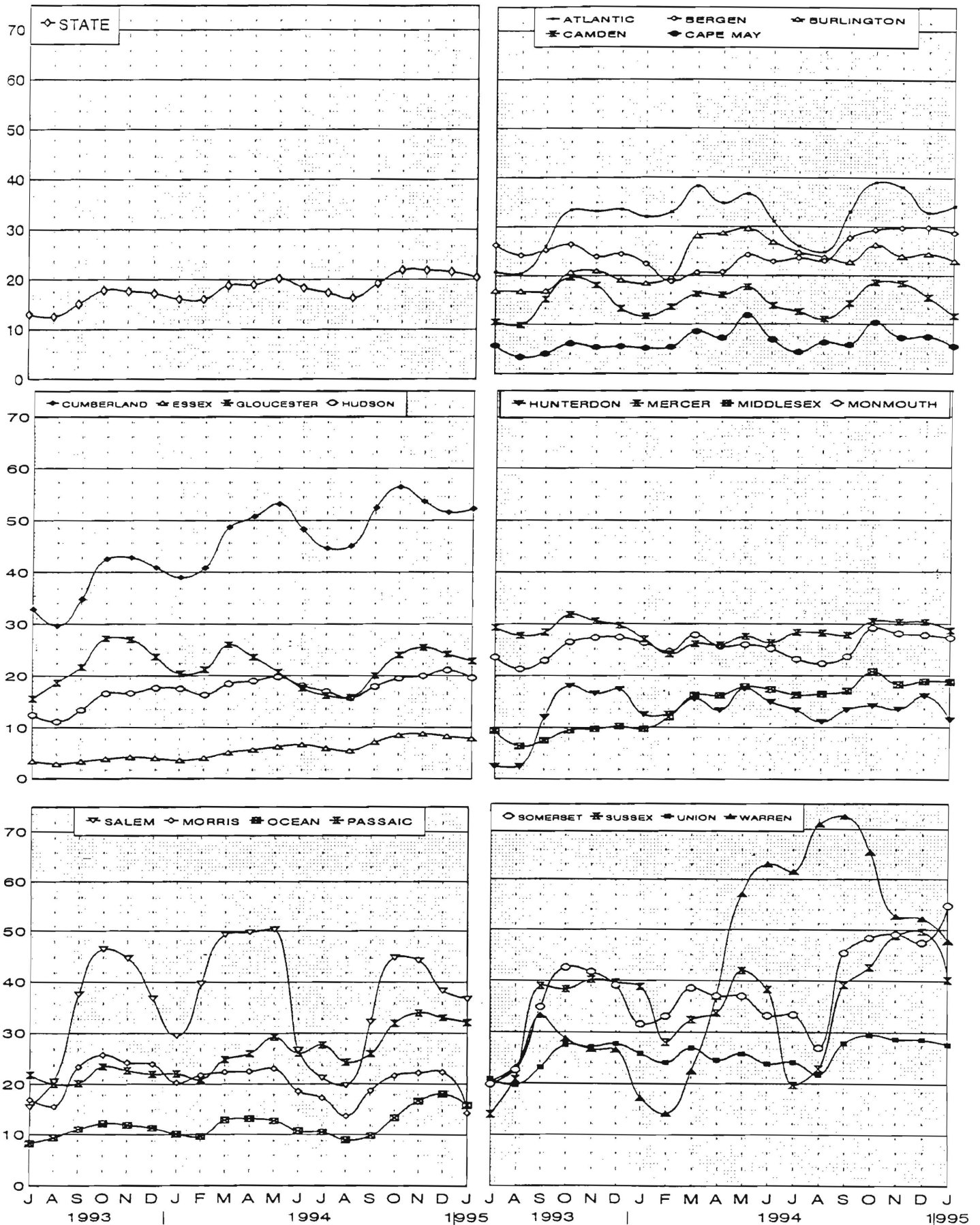


New Jersey Department of Human Services
Division of Family Development

TABLE 8
JOBS/FDP PARTICIPATION RATES BY MONTH
(PERCENT)

COUNTY	JUL 93	AUG 93	SEP 93	OCT 93	NOV 93	DEC 93	JAN 94	FEB 94	MAR 94	APR 94	MAY 94	JUN 94	JUL 94	AUG 94	SEP 94	OCT 94	NOV 94	DEC 94	JAN 95
ATLANTIC	20.7	20.5	26.0	33.3	33.1	33.5	32.0	32.9	38.2	34.7	36.6	31.0	26.0	24.8	33.0	39.0	38.0	32.8	34.2
BERGEN	26.2	24.1	25.2	26.3	23.9	24.4	22.4	18.8	20.6	20.7	24.2	22.9	23.5	23.0	27.6	29.3	29.7	29.7	28.6
BURLINGTON	16.9	16.8	16.9	20.6	21.0	19.0	18.4	19.6	28.0	28.6	29.6	26.8	24.7	23.7	22.7	26.2	23.9	24.4	22.9
CAMDEN	10.6	9.9	15.2	19.6	18.0	13.3	11.7	13.6	16.2	16.0	17.6	13.8	12.6	11.1	14.3	18.5	18.3	15.5	11.7
CAPE MAY	5.8	3.4	4.1	6.2	5.4	5.6	5.2	5.4	8.6	7.2	11.8	6.9	4.4	6.3	5.8	10.4	7.3	7.5	5.5
CUMBERLAND	32.8	29.6	34.8	42.6	42.8	40.9	39.0	40.9	48.7	50.8	53.2	48.3	44.7	45.1	52.5	56.4	53.7	51.5	52.2
ESSEX	3.5	3.0	3.4	3.9	4.3	4.1	3.7	4.1	5.2	5.7	6.3	6.7	6.0	5.5	7.2	8.5	8.8	8.3	7.8
GLOUCESTER	15.6	18.7	21.7	27.2	27.0	23.6	20.4	21.2	26.0	23.6	20.7	17.6	16.2	15.8	20.0	24.0	25.5	24.2	22.8
HUDSON	12.4	11.1	13.4	16.6	16.6	17.6	17.5	16.3	18.4	19.0	19.7	18.1	17.0	15.7	17.9	19.5	20.0	21.1	19.6
HUNTERDON	2.5	2.6	12.0	18.1	16.6	17.4	12.5	12.7	15.5	13.3	17.5	15.0	13.3	11.1	13.4	14.2	13.5	16.1	11.5
MERCER	29.4	27.8	28.4	31.8	30.6	29.7	27.1	24.2	26.2	26.0	27.6	26.4	28.4	28.3	27.9	30.5	30.4	30.4	28.7
MIDDLESEX	9.4	6.4	7.5	9.5	9.7	10.3	9.8	12.0	16.2	16.2	17.9	17.4	16.3	16.5	17.1	20.8	18.2	18.8	18.8
MONMOUTH	23.6	21.3	23.0	26.5	27.4	27.5	26.4	24.7	27.9	25.7	26.0	25.2	23.2	22.3	23.7	29.2	28.2	27.8	27.3
MORRIS	16.9	15.6	23.4	25.7	24.3	24.0	20.3	21.9	22.4	22.6	23.1	18.6	17.3	13.7	18.7	21.7	22.2	22.4	14.4
OCEAN	8.3	9.4	11.1	12.2	12.0	11.3	10.1	9.7	12.9	13.2	12.7	10.8	10.6	9.0	9.9	13.4	16.7	18.1	15.8
PASSAIC	21.8	20.0	20.2	23.5	22.7	22.0	22.1	21.0	24.9	26.0	29.2	26.1	27.7	24.3	25.9	31.9	33.9	33.0	32.1
SALEM	15.6	20.6	37.6	46.5	44.7	36.8	29.5	39.7	49.3	49.8	50.3	26.7	21.2	19.8	32.2	44.8	44.2	38.3	36.7
SOMERSET	19.8	22.7	34.9	42.6	41.8	39.1	31.6	33.1	38.6	37.0	37.0	33.2	33.4	26.9	45.4	48.3	49.1	47.4	54.7
SUSSEX	14.0	20.9	39.0	38.4	40.2	39.7	38.9	28.1	32.4	33.7	42.0	38.3	19.7	23.0	39.2	42.6	48.7	49.6	40.2
UNION	20.9	19.7	23.2	27.5	27.2	27.8	25.9	24.2	26.9	24.6	25.8	23.9	24.2	21.8	27.9	29.5	28.7	28.6	27.7
WARREN	20.3	23.2	33.3	28.8	26.8	26.7	17.2	14.3	22.5	37.0	57.1	63.0	61.5	71.0	72.5	65.4	52.6	52.2	47.7
STATE	13.0	12.5	15.1	17.8	17.6	17.2	16.0	16.0	18.8	18.9	20.1	18.3	17.3	16.3	19.1	21.8	21.8	21.5	20.4

JOBS/FDP PARTICIPATION RATES (%)



New Jersey Department of Human Services
Division of Family Development

TABLE 9

GENERAL ASSISTANCE Program State Summary

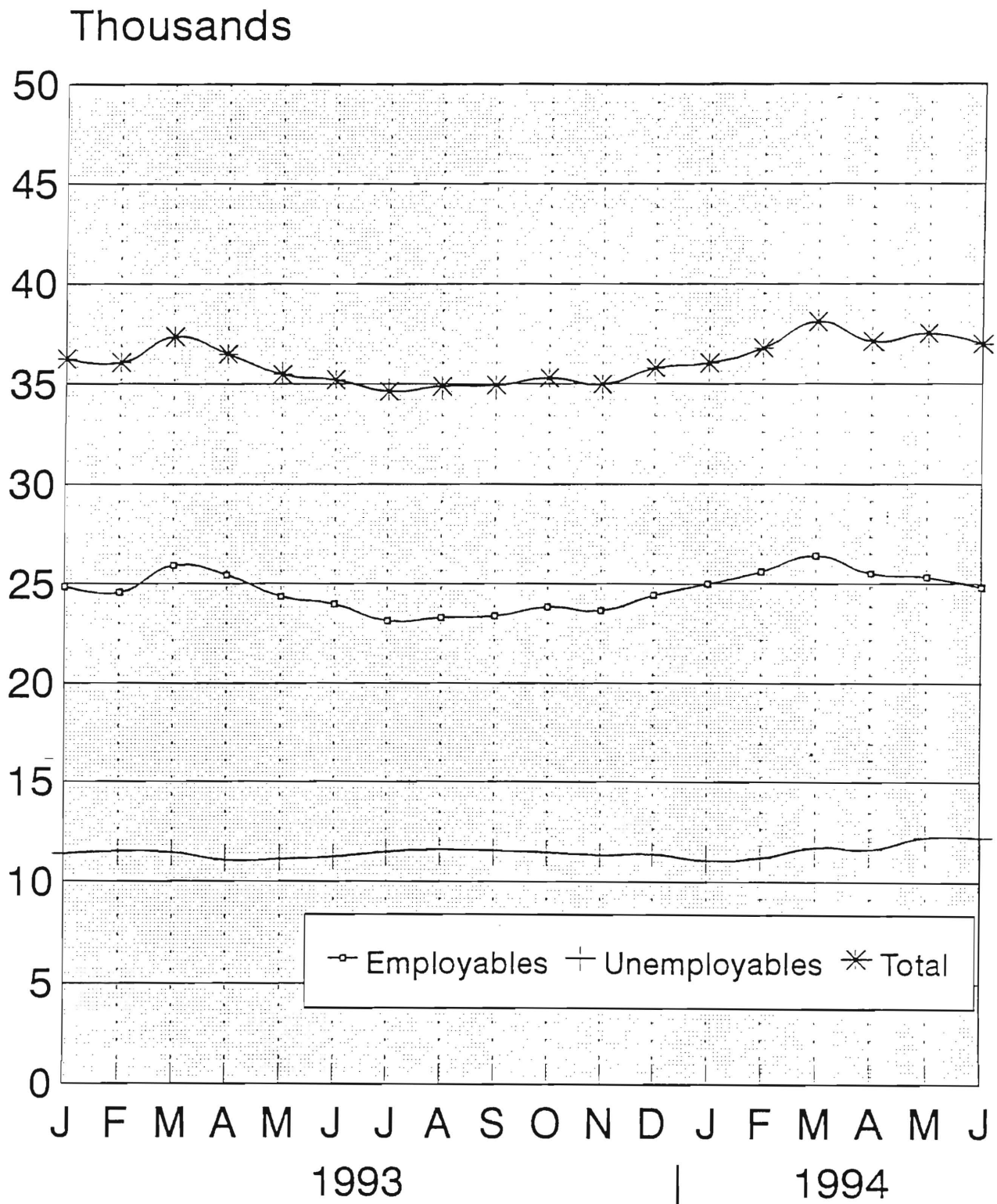
NUMBER OF EMPLOYABLE AND UNEMPLOYABLE
RECIPIENTS DURING REPORT MONTH,
AND NUMBER RECEIVING BURIAL PAYMENTS

January 1993 through June 1994

		Maintenance (including EA)			Burial Payments		
		Employables	Unemployables	Total	Employables	Unemployables	Total
1993	Jan	24,873	11,384	36,257	11	17	28
	Feb	24,576	11,503	36,079	10	18	28
	Mar	25,921	11,445	37,366	22	31	53
	Apr	25,438	11,057	36,495	16	20	36
	May	24,370	11,113	35,483	13	35	48
	Jun	23,989	11,225	35,214	16	22	38
	Jul	23,156	11,488	34,644	14	18	32
	Aug	23,320	11,580	34,900	16	27	43
	Sep	23,402	11,542	34,944	8	28	36
	Oct	23,853	11,455	35,308	13	11	24
	Nov	23,668	11,324	34,992	14	29	43
	Dec	24,435	11,374	35,809	15	38	53
1993	AVERAGE	24,250	11,374	35,624	14	24	38
1994	Jan	24,992	11,062	36,054	12	21	33
	Feb	25,600	11,202	36,802	21	34	55
	Mar	26,397	11,719	38,116	12	18	30
	Apr	25,512	11,629	37,141	11	29	40
	May	25,327	12,212	37,539	12	19	31
	June	24,814	12,190	37,004	26	30	56
1994	AVERAGE	25,440	11,669	37,109	16	25	41

General Assistance Recipients

January 1993 through June 1994



New Jersey Department of Human Services
Division of Family Development

TABLE 10
CHILD SUPPORT AND PATERNITY
State Summary

CHILD SUPPORT AND PATERNITY
COLLECTIONS AND TOTAL DISTRIBUTION

\$1000'S

	Fiscal Years 1993 and 1994			Most Recent 6 Months		
	1993	1994	% CHG.	7/93-12/93	7/94-12/94	% CHG.
COLLECTION SOURCE						
AFDC & FOSTER CARE						
Federal Tax	\$13,139	\$15,255	16.1%	\$1,216	\$1,246	2.4%
State Tax	1,631	1,970	20.8%	1,176	979	-16.8%
Unempl. Ins. Ben.	7,249	4,975	-31.4%	2,669	1,389	-47.9%
Income Withholding	40,928	43,219	5.6%	21,150	22,146	4.7%
Other/Own Behalf	19,130	18,137	-5.2%	9,275	9,031	-2.6%
From Other States	4,370	3,621	-17.1%	1,949	1,694	-13.1%
For Other States	5,864	5,269	-10.1%	1,870	3,346	78.9%
TOTAL COLLECTION	\$92,311	\$92,446	0.1%	\$39,306	\$39,831	1.3%
NON- AFDC						
Federal Tax	\$4,937	\$3,846	-22.1%	\$1,191	\$956	-19.8%
State Tax	1,459	2,193	50.3%	1,338	1,198	-10.4%
Unempl. Ins. Ben.	19,274	15,035	-22.0%	7,750	5,183	-33.1%
Income Withholding	158,036	213,431	35.1%	98,996	119,284	20.5%
Other/Own Behalf	117,224	143,676	22.6%	68,728	76,588	11.4%
From Other States	20,199	19,832	-1.8%	9,888	9,962	0.7%
For Other States	24,316	19,893	-18.2%	6,823	13,154	92.8%
TOTAL COLLECTION	\$345,445	\$417,905	21.0%	\$194,715	\$226,326	16.2%
TOTAL						
Federal Tax	\$18,076	\$19,101	5.7%	\$2,408	\$2,202	-8.5%
State Tax	3,090	4,162	34.7%	2,514	2,177	-13.4%
Unempl. Ins. Ben.	26,523	20,010	-24.6%	10,419	6,573	-36.9%
Income Withholding	198,965	256,650	29.0%	120,146	141,430	17.7%
Other/Own Behalf	136,354	161,813	18.7%	78,004	85,619	9.8%
From Other States	24,568	23,453	-4.5%	11,837	11,655	-1.5%
For Other States	30,180	25,162	-16.6%	8,693	16,500	89.8%
TOTAL COLLECTION	\$437,756	\$510,351	16.6%	\$234,021	\$266,157	13.7%
TOTAL DISTRIBUTED	\$426,000	\$468,000	9.9%	\$224,400	\$235,200	3.8%

Explanatory Notes

The Department of Human Services Division of Family Development provides basic income and an opportunity to achieve self-sufficiency for individuals and families served by the Division's programs. The Division provides leadership, direction and supervision to those public agencies responsible for administering those programs and plans for and develops policies to promote self-sufficiency.

AID TO FAMILIES WITH DEPENDENT CHILDREN (AFDC) - Financial assistance for dependent children and their natural or adoptive parents, or certain other relatives recognized as taking the place of a parent.

Regular AFDC (C Segment) - assistance when only one parent is in the home due to death or absence, or both parents are in the home but at least one is incapacitated.

Unemployed Parents (F Segment) - assistance when both parents are in the home, neither is incapacitated and the primary wage earner meets the federally defined criteria for unemployment.

State AFDC (N Segment) - assistance when both parents are in the home, neither is incapacitated, and the primary wage earner does not meet the federal definition of unemployment.

Medicaid Only - families no longer receiving AFDC financial assistance but remaining eligible for Medicaid under applicable provisions which extend coverage beyond period of AFDC assistance.

FOOD STAMP PROGRAM (FS) - Authorized by Congress as a nutritional supplement program to provide low income households with more food of greater variety and better nutrition. Program eligibility is based on household income, resources, and expenses for medical, shelter, and dependent care. CWA staff refer certain recipients to the New Jersey Department of Labor for participation in the Food Stamp Employment and Training Program.

EMERGENCY ASSISTANCE (EA) - Payments to those eligible for AFDC (also for General Assistance or Supplemental Security Income, not included here), authorized during the 30 consecutive days immediately following the emergency (defined as a substantial loss of shelter, food, clothing, or household furnishings by fire, flood or other similar disaster) or if the eligible individual or family is in an imminent or actual state of homelessness.

JOBS/FDP

JOB OPPORTUNITY AND BASIC SKILLS PROGRAM (JOBS) - Federally mandated work/training program for recipients of AFDC established by the Family Support Act of 1988 under Part F of Title IV of the Social Security Act.

FAMILY DEVELOPMENT PROGRAM (FDP) - Reform legislation enacted by the State Legislature in January 1992 to: build, strengthen, and support the family unit; encourage family formation; reduce the long-term aspects of welfare dependency; look to the needs of the family unit as a whole; emphasize education and training for all family members; maximize use of educational, training and employment resources; and develop genuine private sector job opportunities.

County - Counties currently participating in the Family Development Program are indicated by an "*".

SNAPSHOT OF ACTIVITY AT POINT IN TIME - Status of activities as of the end of the month:

Total Non-Exempt JOBS/FDP Recipients - Calculation of the number of mandatory IV-F individuals (FAMIS report # FB304).

Employment Directed Activities (EDA) - From Activities Summary Report (OMEGA report # RM064). Unduplicated count of persons participating in **Training, Education, or Job Search**.

Participants in EDA, Receiving Support Services - From Issuance Disbursement Summary (OMEGA report # RM703). Total number of active participants who show receipt of **Training Related Expenses or Child Care**.

Participation Rate (JOBS/FDP) - Federally mandated calculation method, dividing the number of participants whose combined and averaged weekly hours of participation in qualifying activities equals or exceeds 20 hours per week by the total number of non-exempt IV-F recipients. As of the end of the month.

ACTIVITY FOR THE MONTH - Number of participants with the indicated activity during the month:

Participants with First Case Management Interview - From Activities Summary Report (OMEGA report # RM064).

Number of Persons Employed This Month, Still Receiving AFDC - From Activities Summary Report (OMEGA report # RM064).

Number of Persons Closed on FAMIS Due to Earnings - From FAMIS report # FM463.

Post AFDC and Receiving Child Care - Persons no longer in receipt of AFDC, but still receiving child care. From Issuance Disbursement Summary (OMEGA report # RM703).