

Directions

From the North: Take Route 1 South to the Capitol Complex exit. Turn right onto Warren Street and proceed to the light. Turn left onto Market Street. Pass through the next light and bear right. Follow signs for the Capitol Complex.

From the East: Take Interstate 195 West to Route 29 North (toward Lambertville). Follow Route 29 North and exit right at Memorial Drive. Proceed through the light at the end of the ramp. Stay to the right and make a semi-circle around the parking area. Go straight at the light and make an immediate left to the Capitol Complex Garage.

From the South: Take Route 206 North, or Interstate 295 North, to Route 129. Route 129 feeds into Route 29 North. Exit right at Memorial Drive and follow the directions above.

From the West: Enter Trenton via the Delaware River toll bridge (Route 1 North). Exit at Route 29 and drive north toward Lambertville. Exit right at Memorial Drive and follow the directions above.

Parking

Specially marked spaces for visitors with special needs are available in the Capitol Complex Parking Garage and on the south side of West State Street between the State House and Thomas Edison State College.

Entering the Buildings

State House Entrance - The West State Street entrance has two exterior wheelchair-accessible ramps and is equipped with an automatic door.

State House Annex Entrance - The West State Street entrance to the Annex is equipped with a wheelchair-accessible ramp and power-assisted doors.

Security

All visitors should be prepared to show valid identification and go through security screening. Acceptable forms of identification include any government issued photo ID such as a passport, driver's license, or Motor Vehicles Commission issued picture ID.

Legislative Information

Staff from the Office of Legislative Services Legislative Information and Bill Room (located in room B-1 in the basement of the State House Annex) can answer questions regarding the legislative process, legislative activity, the status of bills, legislative committee/commission membership, and legislative district contact information.

Call: 609-847-3905

Toll free in NJ: 800-792-8630

Hearing impaired: Dial 711 for NJ Relay.

Large Size Print and Audio Materials - Large print versions of bills, resolutions and committee statements can be obtained from the Legislative Information and Bill Room. Upon request, other publications can be reproduced in large print and some items can be transferred onto audio format as well.

Tours

Because the public galleries are not wheelchair accessible, arrangements will be made for the floor of both legislative chambers to be available to visitors in wheelchairs. Advance reservation for this accommodation is appreciated.

Sign language interpreters are available for persons with hearing loss. Please inform the State House Tour Office at least five working days in advance of your scheduled tour to make arrangements.

For tour information and reservations, call the State House Tour Office at 609-847-3150.

Additional Information

For more information regarding access for visitors with special needs, call the Administrative Unit of the Office of Legislative Services at 609-847-3353.



Office of Legislative Services
Office of Public Information
State House Annex, P.O. Box 068
Trenton, NJ 08625-0068
www.njleg.state.nj.us



THE NEW JERSEY STATE HOUSE AND ANNEX

Information for Visitors with Special Needs



A publication of the
Office of Legislative Services
Office of Public Information



New Jersey State House and Annex Access

New Jersey's State House is one of the oldest capitols in continuous use. Since the original structure was built in 1792, numerous additions and modifications have been made.

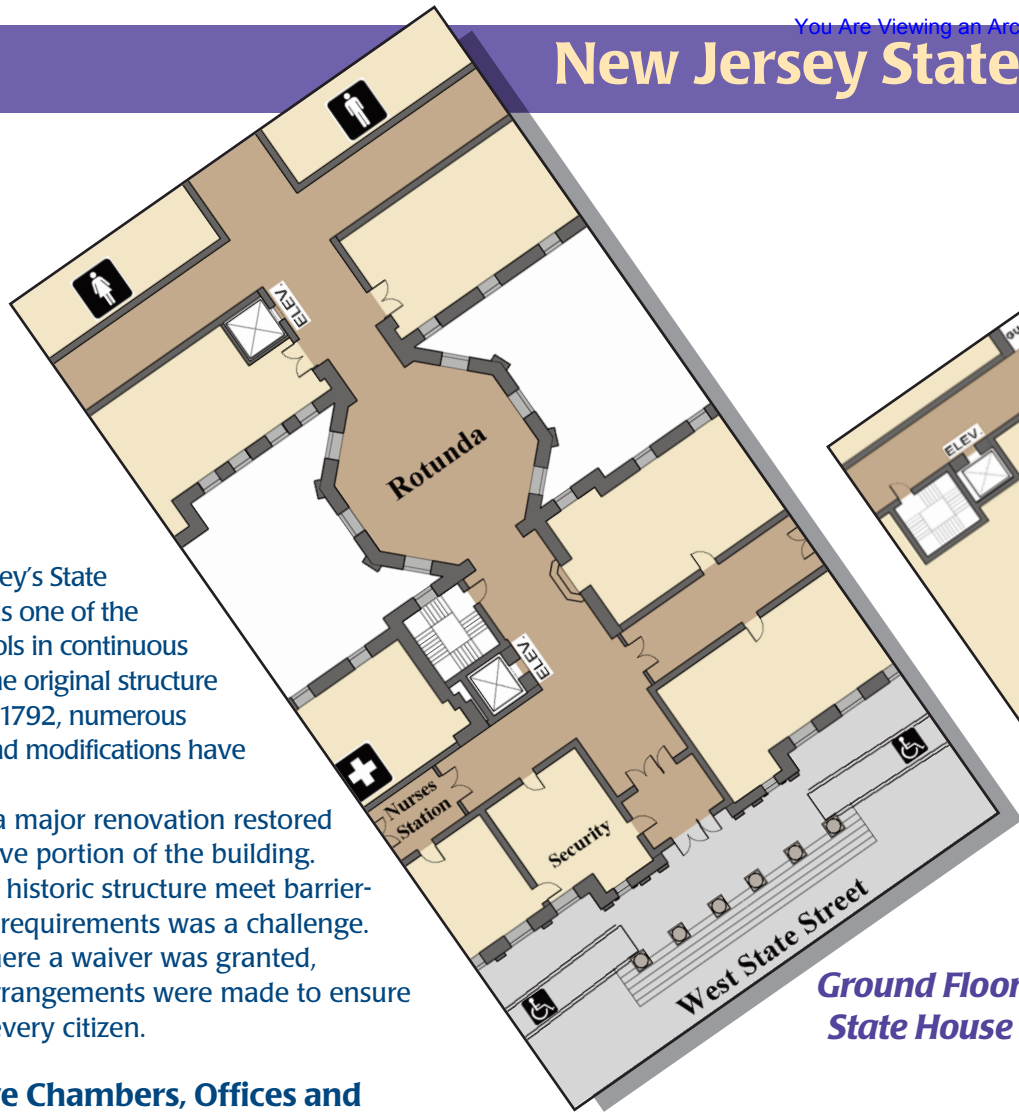
In 1987, a major renovation restored the legislative portion of the building. Making the historic structure meet barrier-free access requirements was a challenge. In areas where a waiver was granted, alternate arrangements were made to ensure access for every citizen.

Legislative Chambers, Offices and Committee Rooms

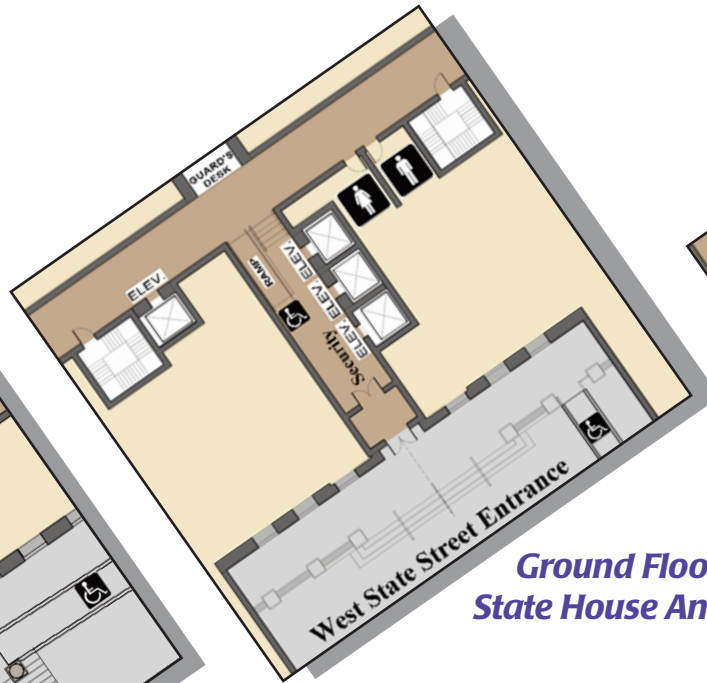
On session days, sergeants-at-arms of both Houses are required to grant visitors using wheelchairs access to the chamber floors through the first floor main entrance. Legislative Leadership offices, on the second floor of the State House, are accessible by key-operated platform lifts. The keys to both lifts may be obtained from the General Assembly Clerk's office in room L214.

The legislative chambers and committee rooms are equipped with built-in, ADA-compliant, FM assisted listening devices for persons with hearing loss. Headsets and receivers are available when requested 24 hours in advance. Specific arrangements can be made by calling:

- Legislative Committee Rooms: 609-847-3353
- Senate Chamber: 609-847-3915
- General Assembly Chamber: 609-847-3115



Ground Floor State House



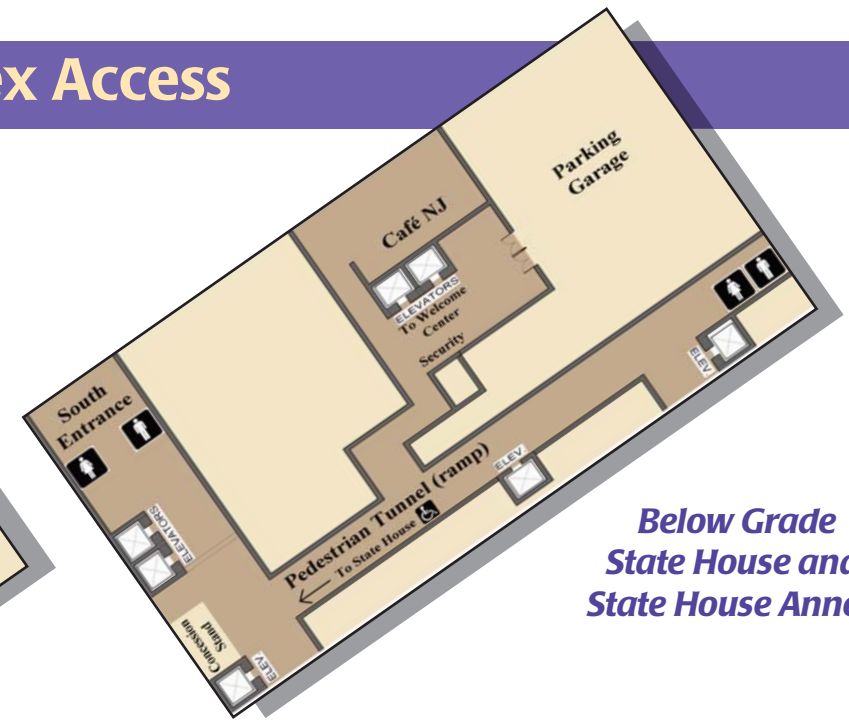
Ground Floor State House Annex

Real-time reporters and sign language interpreters are available with a minimum of five working-days' notice by calling 609-847-3353.

Elevators

The State House - An elevator located near the Rotunda on the ground floor of the State House services Levels B, 1, 2, 3, and 4. Both elevators located below grade near the South Entrance of the State House are wheelchair accessible. The one labeled for handicapped use stops at Level B and avoids the four steps that separate Level B from B1. *Please note that this elevator is not reserved solely for visitors with special needs.*

The Annex - Three wheelchair-accessible elevators in the center of the Annex provide access to each of the building's main levels. Sub-levels of



Below Grade State House and State House Annex

the basement and first floor are also serviced by a wheelchair-accessible elevator.

The Pedestrian Tunnel

A Pedestrian Tunnel connecting the State House and Annex accommodates wheelchair users. ADA-compliant entrances and elevators within the State House make reaching the tunnel possible from all parts of the building.

Restrooms

The State House - Floors A, B1, 1, 2, and 3 have public restrooms that are accessible to visitors with special needs.

The Annex - Restrooms throughout the Annex have sinks and lavatories that accommodate wheelchair users.

Signage

Signage in the Annex and Pedestrian Tunnel connecting the State House to the Annex contains Braille and raised lettering.