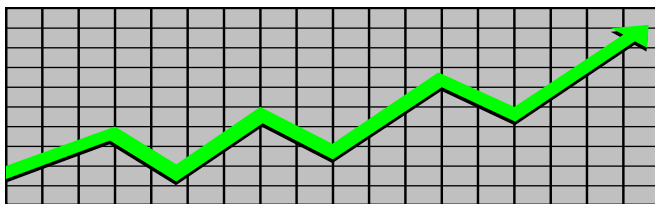


State of New Jersey
Department of Human Services
Division of Family Development

CURRENT PROGRAM STATISTICS



July 2022

Natasha Johnson, Assistant Commissioner

TABLE OF CONTENTS

HIGHLIGHTS:

WFNJ/TANF	ii
NJ SNAP	ii
EMERGENCY ASSISTANCE	ii
GENERAL ASSISTANCE	iii
GA Emergency Assistance	iii
GA Program	iii
CHILD SUPPORT SERVICES	iii
WORK FIRST NEW JERSEY (WFNJ)	iii
STATISTICS- BY STATE & COUNTY	1
Table 1: WFNJ/TANF Families & Persons (NJ Statewide) July 2020 to 2022	1
Table 2: WFNJ/TANF Families (by County)- July 2022	2
Table 2B: WFNJ/TANF Persons, Adults, & Children (by County)- July 2022	3
Table 3: TANF Work Participation Rates Over 12 Month Period (by County)- July 2022	4
Table 4: TANF Work Participation Rates Over 12 Month Period (NJ Statewide)- July 2022	5
Table 5: NJ SNAP Households/Persons (NJ Statewide) July 2020 to 2022	6
Table 6: NJ SNAP Recipient Trends (NJ Statewide) July 2020 to 2022	7
Table 7: NJ SNAP Households/Persons (by County)- July 2022	8
Table 8: Emergency Assistance Program (NJ Statewide) July 2020 to 2022	9
Table 9: Emergency Assistance Program (by County)- July 2022	10
Table 10: General Assistance Program (NJ Statewide) July 2020 to 2022	11
Table 11: General Assistance Program (by County)- July 2022	12
Table 12: Child Support Services Distributions (NJ Statewide) FFY 2022	13
Table 14: Child Support Services Cases With Orders- July 2022	14
Table 15: Child Support Services Collections On Current Support- July 2022	15
Table 16: Child Support Services Cases With Payments On Arrears- July 2022	16
Table 17: WFNJ Statistical Summary- July 2022	17
ACRONYMS	18
EXPLANATORY NOTES	19
WFNJ Statistical Summary (Table 17)	19

DIVISION OF FAMILY DEVELOPMENT CURRENT PROGRAM STATISTICS

JULY 2022

Each month the Division of Family Development publishes its program statistics for: WFNJ/TANF, NJ SNAP, Emergency Assistance, General Assistance, and Child Support Services. When possible, information is provided separately for children and adults. Many tables also provide trend data with information broken down by county for readers to consider. This report is compiled and prepared by The Bureau of Research & Reporting.

WFNJ/TANF

- As of the end of July, the TANF caseload had increased by 1601 cases, from 9,322 in July 2021 to 10,923 in July 2022; an increase of 17.2%.
- The counties with caseloads that increased the most since July 2021 were Salem (43%), Monmouth (38.6%), and Union (38%).
- The counties with caseloads that decreased the most since July 2021 were Warren (-29.8%), Hunterdon (-9.3%), and Essex (-8.9%).
- Of the WFNJ/TANF cases, 2,715 or 24.9% were child-only in July 2022.
- The counties with the most child-only cases were Camden (472), Hudson (305), and Essex (289).
- Hudson (4,681), Camden (4,093), and Essex (3,502) counties had the greatest number of persons receiving TANF in July 2022.

NJ SNAP (Formerly FOOD STAMPS)

- In July 2022, there were 411,900 households receiving NJ SNAP benefits. The number of NJ SNAP households decreased by 35,056 or -7.8%, since July 2021.
- There were 795,158 persons receiving NJ SNAP benefits as of July 2022; a decrease of 70,345 or -8.1% since July 2021.
- The counties having the highest SNAP caseload increase since July 2021 was Hunterdon (3.4%).
- The counties having the highest SNAP caseload decrease since July 2021 were Passaic (-16.6%), Hudson (-14.3%), and Warren (-12.3%).

EMERGENCY ASSISTANCE

- There were 1,333 TANF families receiving Emergency Assistance (EA) in July 2022; an increase of 5 or 0.4% since July 2021.
- In July 2022, EA payments were made for 625 SSI recipients.

DIVISION OF FAMILY DEVELOPMENT CURRENT PROGRAM STATISTICS JULY 2022

- There were 1,954 GA cases with Emergency Assistance payments in July 2022; a change of 0 or 0% since July 2021.
- The counties that showed the highest percent increase in Emergency Assistance payments were Somerset (62.9%), Hunterdon (58.3%), and Monmouth (36%).
- The counties that showed the highest percent decrease in Emergency Assistance payments were Sussex (-47.4%), Gloucester (-29%), and Ocean (-27.7%).

GENERAL ASSISTANCE

- The total numbers of cases receiving GA has increased from 13,168 to 16,313 since July 2021; an increase of 23.9%.
- There were 12,451 Employable GA and 3,862 Unemployable GA cases in July 2022.
- The counties that showed a percent increase for GA cases were Hunterdon (97.4%), Somerset (61.1%), and Atlantic (60.3%) since July 2021.
- The counties that showed the highest percent decrease for GA cases since July 2021 were Hudson (-17.4%), Sussex (-13%), and Warren (-10.3%).
- In July 2022, GA cases showed a 0.92% increase since June 2022.

CHILD SUPPORT SERVICES (QUARTERLY REPORT)

- The total collection for the Child Support Services Program was about \$279 million from April 2022 to June 2022; a decrease of -13.4% over the same period from FFY .
- Total distributions decreased -13.1% from June 2021.

WORK FIRST NEW JERSEY (WFNJ)

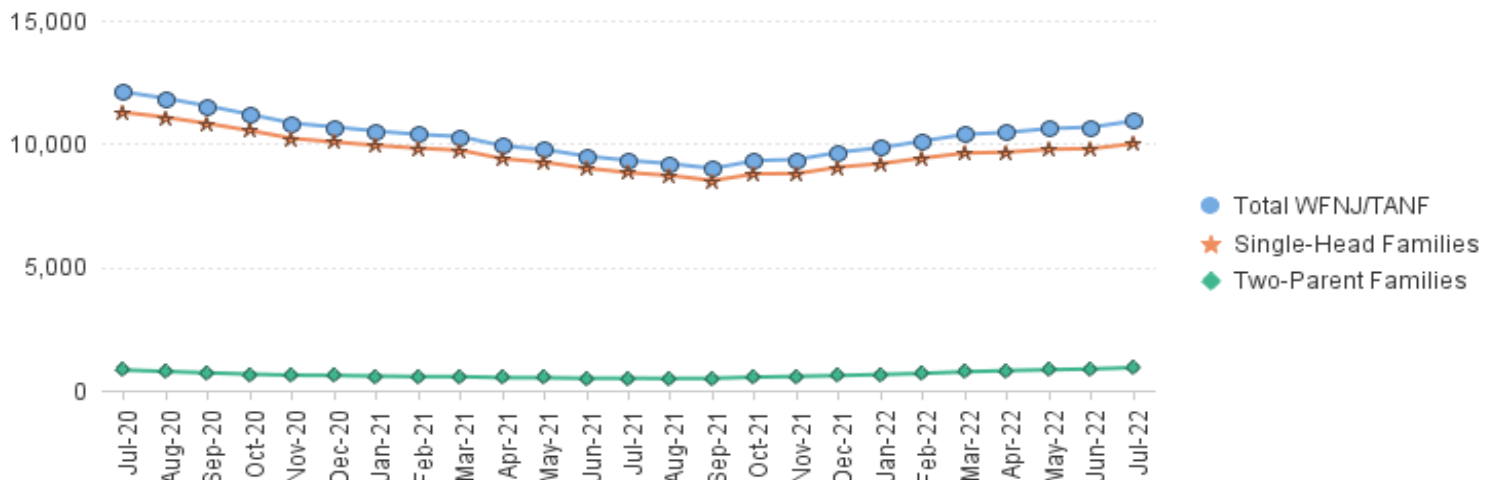
- During the report month of July 2022, there were 505 families in which at least one member was employed and an additional 95 families whose WFNJ assistance cases were closed due to employment - related earnings.
- The three counties with the greatest number of employed active WFNJ recipients were: Hudson (98), Mercer (75), and Essex (56).
- There were 220 former TANF cases receiving post-TANF support in the form of child care assistance.

TABLE 1: WFNJ/TANF PROGRAM

STATEWIDE NUMBER OF APPLICATIONS AND TERMINATIONS DURING JULY 2022
NUMBER OF ELIGIBLE FAMILIES & PERSONS RECEIVING WFNJ/TANF FOR JULY 2022

		JULY 2020 THROUGH JULY 2022											
		Cases Added	Cases Closed	Child-Only Cases ‡	Total Single-Head Families	2-Parent Families	Total WFNJ/TANF Families	%CHNG (1 Yr.)	Total Persons	%CHNG (1 Yr.)	Adults	Children	
2020	JUL	458	526	3,686	11,274	826	12,100	14.2%	31,216	18.6%	9,240	21,976	
	AUG	410	660	3,665	11,070	768	11,838	10.2%	30,454	13.9%	8,941	21,513	
	SEP	475	796	3,603	10,817	711	11,528	7.3%	29,531	10.2%	8,636	20,895	
	OCT	534	904	3,564	10,532	659	11,191	7.6%	28,657	9.6%	8,286	20,371	
	NOV	419	767	3,470	10,218	617	10,835	-1.1%	27,738	0.3%	7,982	19,756	
	DEC	434	595	3,410	10,071	607	10,678	-2.5%	27,371	-1.4%	7,875	19,496	
2020	Average	682	724	3,614	10,607	698	11,306		28,973		8,390	20,583	
2021	JAN	400	585	3,379	9,932	580	10,512	-1.7%	26,960	-0.6%	7,713	19,247	
	FEB	378	504	3,347	9,818	559	10,377	-4.1%	26,520	-3.6%	7,589	18,931	
	MAR	397	481	3,311	9,735	557	10,292	-3.9%	26,335	-3.2%	7,538	18,797	
	APR	298	704	3,224	9,395	518	9,913	-11.8%	25,276	-12.1%	7,207	18,069	
	MAY	264	510	3,209	9,250	513	9,763	-18.0%	24,858	-19.1%	7,067	17,791	
	JUN	373	636	3,141	9,008	489	9,497	-21.8%	24,146	-23.0%	6,845	17,301	
	JUL	391	590	3,068	8,829	493	9,322	-23.0%	23,785	-23.8%	6,747	17,038	
	AUG	415	544	3,029	8,709	482	9,191	-22.4%	23,445	-23.0%	6,644	16,801	
	SEP	388	588	2,945	8,507	489	8,996	-22.0%	23,009	-22.1%	6,540	16,469	
	OCT	833	564	2,921	8,779	538	9,317	-16.7%	23,888	-16.6%	6,934	16,954	
	NOV	656	614	2,816	8,791	568	9,359	-13.6%	24,282	-12.5%	7,111	17,171	
	DEC	702	432	2,824	9,054	601	9,655	-9.6%	25,177	-8.0%	7,432	17,745	
2021	Average	458	563	3,101	9,151	532	9,683		24,807		7,114	17,693	
2022	JAN	667	484	2,796	9,193	645	9,838	-6.4%	25,789	-4.3%	7,687	18,102	
	FEB	655	414	2,794	9,424	689	10,113	-2.5%	26,638	0.4%	8,008	18,630	
	MAR	715	512	2,804	9,623	756	10,379	0.8%	27,433	4.2%	8,331	19,102	
	APR	644	622	2,743	9,656	802	10,458	5.5%	27,749	9.8%	8,517	19,232	
	MAY	632	475	2,723	9,777	838	10,615	8.7%	28,183	13.4%	8,730	19,453	
	JUN	622	599	2,718	9,802	869	10,671	12.4%	28,287	17.1%	8,822	19,465	
	JUL	679	518	2,715	9,998	925	10,923	17.2%	29,043	22.1%	9,133	19,910	
2022	Average To Date	659	518	2,756	9,639	789	10,428		27,589		8,461	19,128	

NJ STATEWIDE
Eligible Families Receiving WFNJ/TANF
JULY 2020 THROUGH JULY 2022



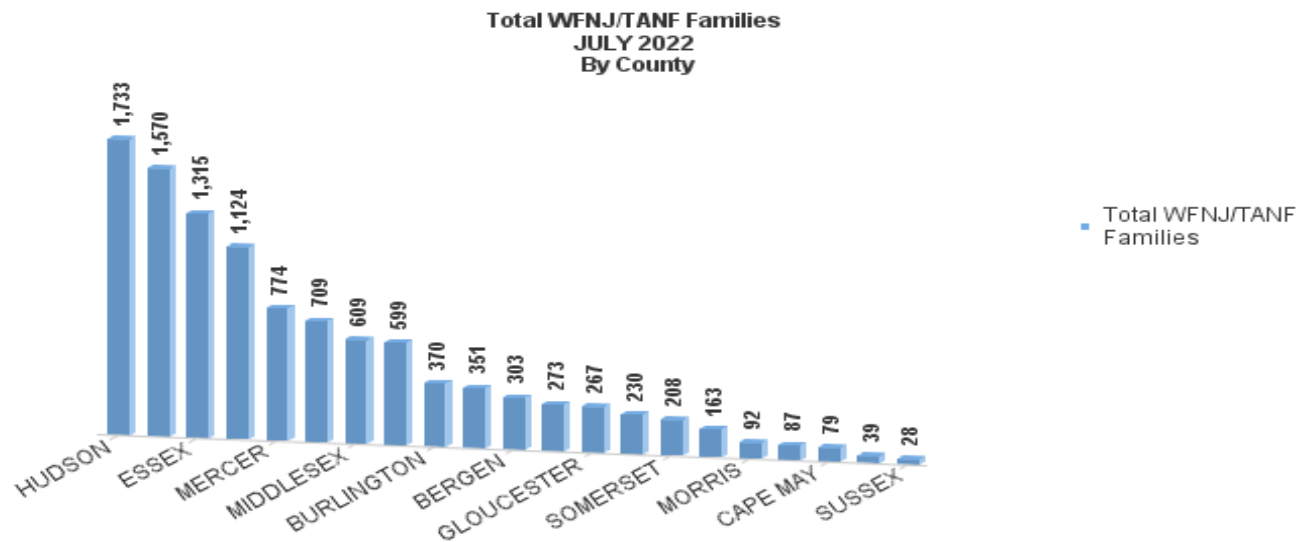
Data is derived from NJ MMIS Shared Data Warehouse Issuance files.

Effective July 2013 this data query source was converted to the SDW

‡ Child-only cases are defined as families in which no eligible adult receives TANF program benefits, yet the family continues to be headed by at least one of the biological parents, or grandparents, or other appropriate adult.

TABLE 2:
WFNJ/TANF NUMBER OF APPLICATIONS AND TERMINATIONS BY COUNTY DURING JULY 2022
PROGRAM NUMBER OF ELIGIBLE FAMILIES RECEIVING WFNJ/TANF FOR JULY 2022

County	Cases Added	Cases Closed **	Child-Only Cases ‡	1-Adult Cases	Total Single-Head Families	2-Parent Families	Total WFNJ/TANF Families	%CHNG (3 Mon)	%CHNG (1 Yr.)
ATLANTIC	29	24	232	435	667	42	709	2.6%	13.1%
BERGEN	38	21	54	211	265	38	303	6.7%	30.6%
BURLINGTON	24	16	103	249	352	18	370	1.4%	20.5%
CAMDEN	80	61	472	993	1,465	105	1,570	2.7%	24.5%
CAPE MAY	5	7	24	49	73	6	79	-9.2%	2.6%
CUMBERLAND	25	27	99	151	250	23	273	-2.5%	1.1%
ESSEX	79	43	289	922	1,211	104	1,315	4.9%	-8.9% *
GLOUCESTER	18	19	70	187	257	10	267	2.7%	16.1%
HUDSON	126	114	305	1,238	1,543	190	1,733	2.4%	30.7%
HUNTERDON	5	2	5	30	35	4	39	-31.6%	-9.3% *
MERCER	57	24	220	530	750	24	774	10.1%	28.4%
MIDDLESEX	46	36	183	391	574	35	609	2.9%	19.9%
MONMOUTH	12	16	54	164	218	12	230	-0.9%	38.6% Δ
MORRIS	6	7	21	57	78	14	92	0.0%	21.1%
OCEAN	20	16	71	253	324	27	351	3.2%	21.0%
PASSAIC	27	22	283	765	1,048	76	1,124	-0.4%	12.4%
SALEM	19	13	33	102	135	28	163	5.8%	43.0% Δ
SOMERSET	14	6	41	149	190	18	208	3.5%	23.1%
SUSSEX	4	2	9	14	23	5	28	27.3%	33.3%
UNION	35	30	125	333	458	141	599	7.2%	38.0% Δ
WARREN	10	12	22	60	82	5	87	-7.4%	-29.8% *
NJ Total	679	518	2,715	7,283	9,998	925	10,923	2.9%	17.2%



Data is derived from NJ MMIS Shared Data Warehouse Issuance files.
Effective July 2013 this data query source was converted to the SDW

‡ Child-only cases are defined as families in which no eligible adult receives TANF program benefits, yet the family continues to be headed by at least one of the biological parents, or grandparents, or other appropriate adult

** 'Cases closed' include cases that received a benefit in the prior month, but did not receive any TANF benefit for the report month.

Δ=higher caseload % change

*=lower caseload % change

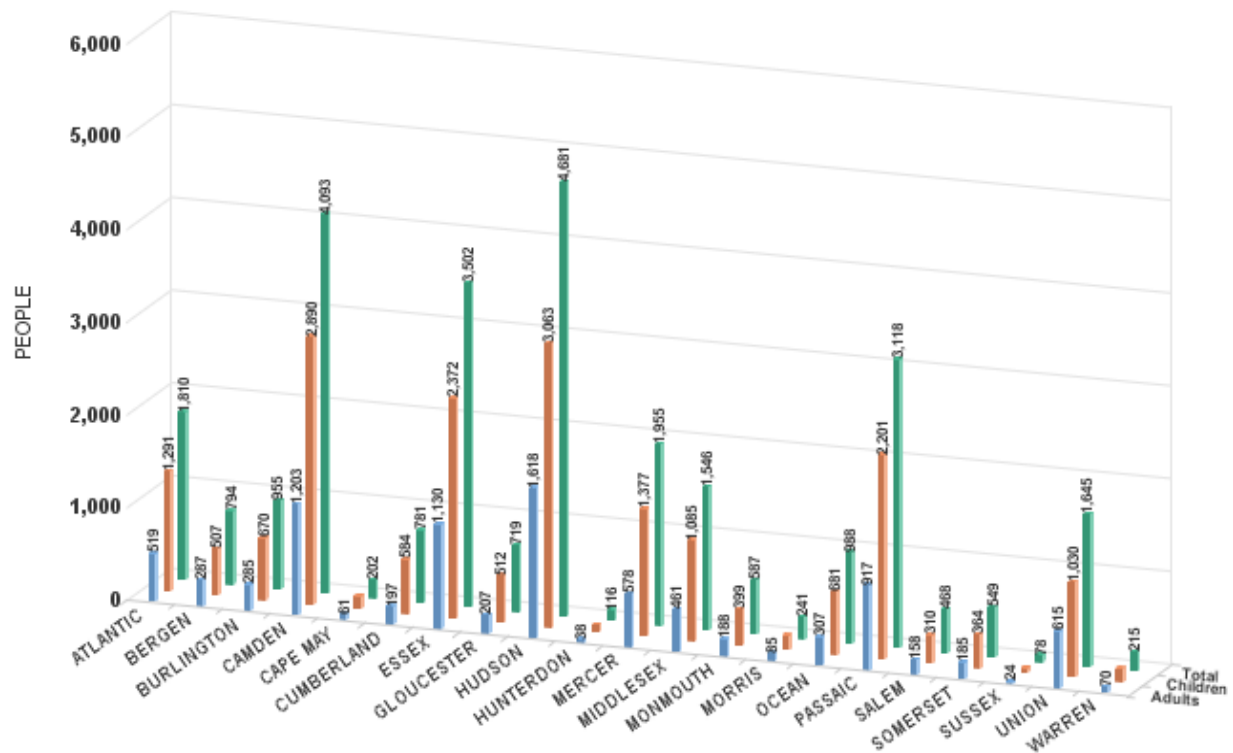
TABLE 2B :

WFNJ/TANF
PROGRAMNUMBER OF PARTICIPATING PERSONS, ADULTS, AND CHILDREN
BY COUNTY FOR JULY 2022**PERSONS**

County	Adults	Children	Child/Adult Ratio	Total Persons	% Chng (1 Yr)	Persons Per Case
ATLANTIC	519	1,291	2.49	1,810	17.5%	2.55
BERGEN	287	507	1.77	794	35.7%	2.62
BURLINGTON	285	670	2.35	955	25.2%	2.58
CAMDEN	1,203	2,890	2.40	4,093	30.5%	2.61
CAPE MAY	61	141	2.31	202	4.7%	2.56
CUMBERLAND	197	584	2.96	781	4.8%	2.86
ESSEX	1,130	2,372	2.10	3,502	-6.0% *	2.66
GLOUCESTER	207	512	2.47	719	26.8%	2.69
HUDSON	1,618	3,063	1.89	4,681	40.1%	2.70
HUNTERDON	38	78	2.05	116	-0.9% *	2.97
MERCER	578	1,377	2.38	1,955	28.4%	2.53
MIDDLESEX	461	1,085	2.35	1,546	22.1%	2.54
MONMOUTH	188	399	2.12	587	57.8% Δ	2.55
MORRIS	85	156	1.84	241	28.9%	2.62
OCEAN	307	681	2.22	988	26.8%	2.81
PASSAIC	917	2,201	2.40	3,118	17.1%	2.77
SALEM	158	310	1.96	468	62.5% Δ	2.87
SOMERSET	185	364	1.97	549	23.1%	2.64
SUSSEX	24	54	2.25	78	34.5%	2.79
UNION	615	1,030	1.67	1,645	41.4% Δ	2.75
WARREN	70	145	2.07	215	-34.5% *	2.47
NJ Total	9,133	19,910	2.18000657	29,043	22.1%	2.66

Δ=higher caseload % change

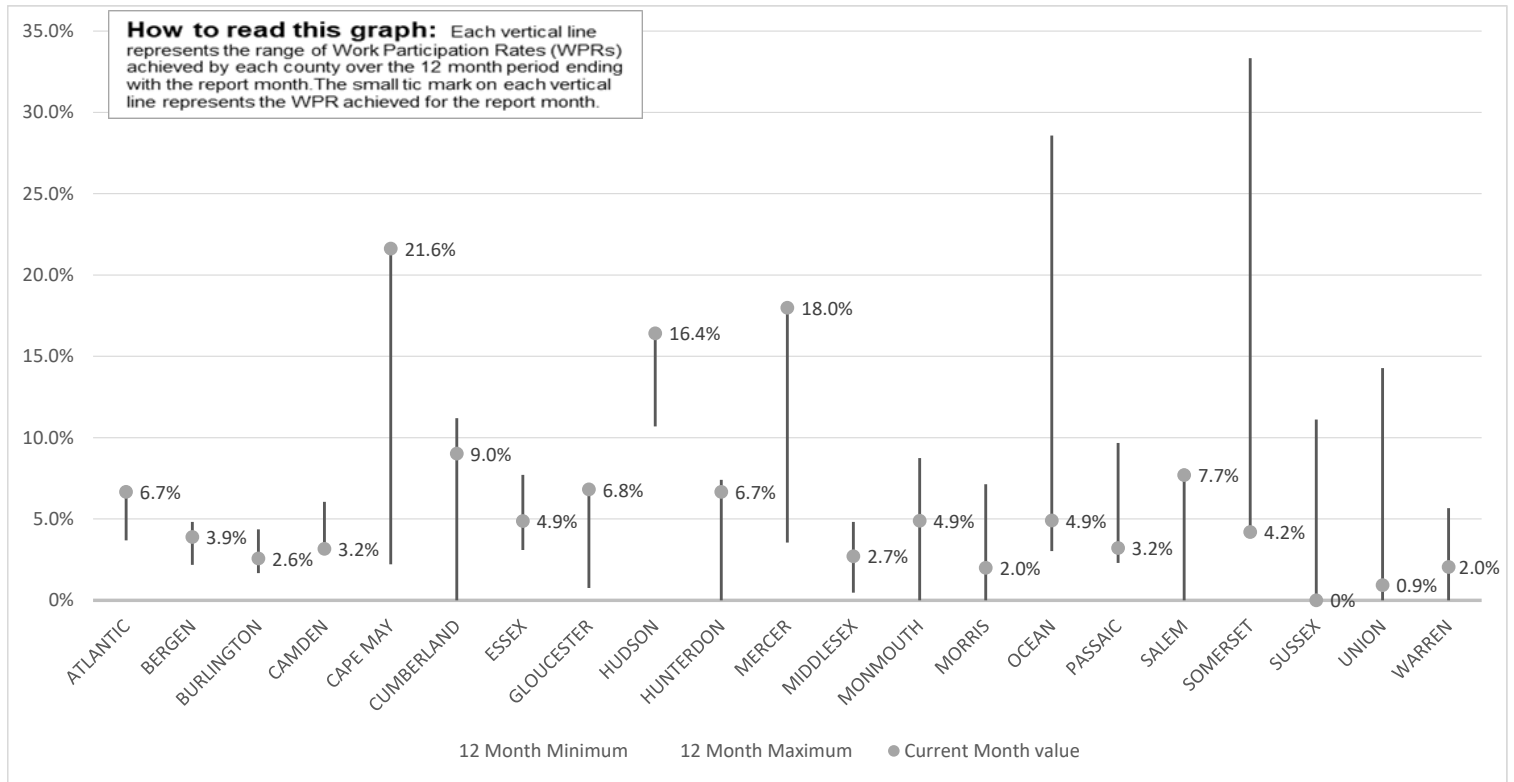
*=lower caseload % change



Data is derived from NJ MMIS Shared Data Warehouse Issuance files.
Effective July 2013 this data query source was converted to the SDW

TABLE 3 :

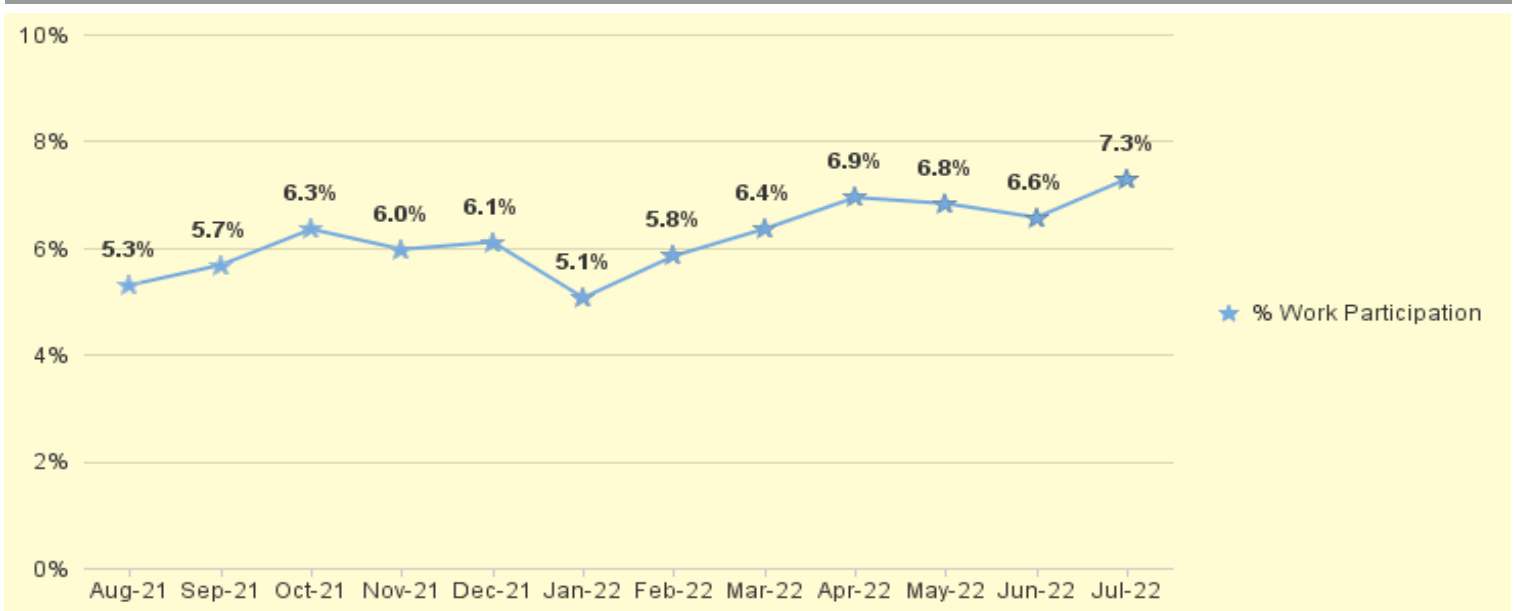
**Work Participation Rates Achieved Over 12 Month Period
Ending with JULY 2022**



Data is derived from NJ MMIS Shared Data Warehouse Issuance files.
Effective July 2013 this data query source was converted to the SDW

TABLE 4 :

**WFNJ/TANF Work Participation Rates
for 12-Month Period Ending with JULY 2022 Statewide**



* The Work Participation rate measures the number of countable Temporary Assistance for Needs Families (TANF) participants based on federal formula. The reported rate is considered to be preliminary until officially calculated by the federal government soon after the close of each federal fiscal year.

TABLE 5 :

NJ SNAP
(FOOD STAMPS)NUMBER OF PARTICIPATING HOUSEHOLDS, PERSONS, ADULTS
AND CHILDREN FOR JULY 2022 (STATEWIDE)

JULY 2020 THROUGH JULY 2022

		HOUSEHOLDS				PERSONS				Age 60+	People with a disability
		WFNJ/ TANF	Other low income	Total	% CHNG (1 YR)	Adults	Children	TOTAL	% CHNG (1 YR)		
2020	JUL	11,336	364,797	376,133	9.4%	405,652	329,166	734,818	8.1%	120,881	211,115
	AUG	11,044	373,293	384,337	10.8%	414,644	333,705	748,349	9.0%	118,173	204,375
	SEP	10,928	384,063	394,991	15.7%	426,710	342,621	769,331	14.1%	122,341	214,255
	OCT	10,605	393,716	404,321	17.8%	437,538	350,440	787,978	16.2%	123,068	216,012
	NOV	10,335	395,876	406,211	18.7%	440,136	350,631	790,767	17.1%	123,104	216,208
	DEC	10,308	401,212	411,520	20.8%	446,083	354,408	800,491	19.3%	123,498	221,131
2020	Average	10,790	361,610	372,400		401,036	326,988	728,024		120,180	209,182
2021	JAN	10,214	409,050	419,264	24.8%	454,910	360,490	815,400	23.6%	123,751	221,129
	FEB	9,980	413,080	423,060	25.6%	459,801	362,760	822,561	24.4%	123,888	221,585
	MAR	9,632	418,259	427,891	27.7%	465,302	366,223	831,525	26.5%	124,614	222,961
	APR	9,474	423,186	432,660	24.3%	470,412	369,625	840,037	23.0%	125,182	224,256
	MAY	9,371	428,961	438,332	19.9%	476,827	373,151	849,978	18.4%	125,750	225,339
	JUN	9,833	440,525	450,358	21.8%	490,430	393,310	883,740	21.8%	126,085	227,479
	JUL	9,067	437,889	446,956	18.8%	485,975	379,528	865,503	17.8%	126,552	227,352
	AUG	9,070	442,333	451,403	17.4%	490,577	383,106	873,683	16.7%	127,091	228,513
	SEP	9,561	447,902	457,463	15.8%	497,122	390,345	887,467	15.4%	127,550	229,863
	OCT	9,822	452,139	461,961	14.3%	502,415	388,925	891,340	13.1%	128,700	231,751
	NOV	9,967	455,343	465,310	14.5%	506,476	391,904	898,380	13.6%	129,292	233,050
	DEC	10,138	458,239	468,377	13.8%	510,116	392,757	902,873	12.8%	129,744	238,680
2021	Average	9,677	435,576	445,253		484,197	379,344	863,541		126,517	227,663
2022	JAN	10,418	457,935	468,353	11.7%	509,801	392,651	902,452	10.7%	157,425	236,238
	FEB	10,486	451,733	462,219	9.3%	503,693	385,199	888,892	8.1%	156,540	232,864
	MAR	10,588	455,766	466,354	9.0%	508,290	388,977	897,267	7.9%	158,331	234,617
	APR	10,706	439,659	450,365	4.1%	491,276	375,105	866,381	3.1%	156,504	231,071
	MAY	10,669	423,672	434,341	-0.9%	474,542	360,324	834,866	-1.8%	154,816	227,400
	JUN	10,650	412,366	423,016	-6.1%	462,757	351,378	814,135	-7.9%	154,107	225,452
	JUL	10,910	400,990	411,900	-7.8%	451,428	343,730	795,158	-8.1%	152,494	222,166
2022	Average	10,632	434,589	445,221		485,970	371,052	857,022		156,018	230,726

This Table is based on those Households & Persons that received SNAP issuances (benefits) during the month

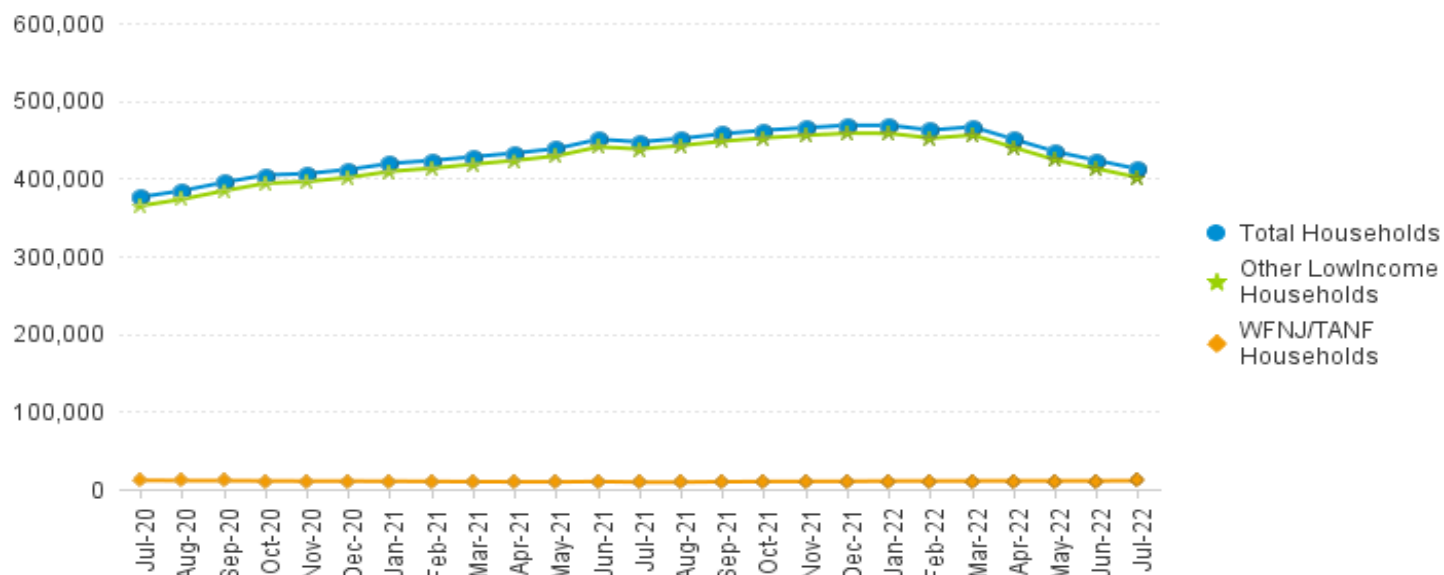
Data is derived from NJ MMIS Shared Data Warehouse.

Effective July 2013 this data query source was converted to the SDW.

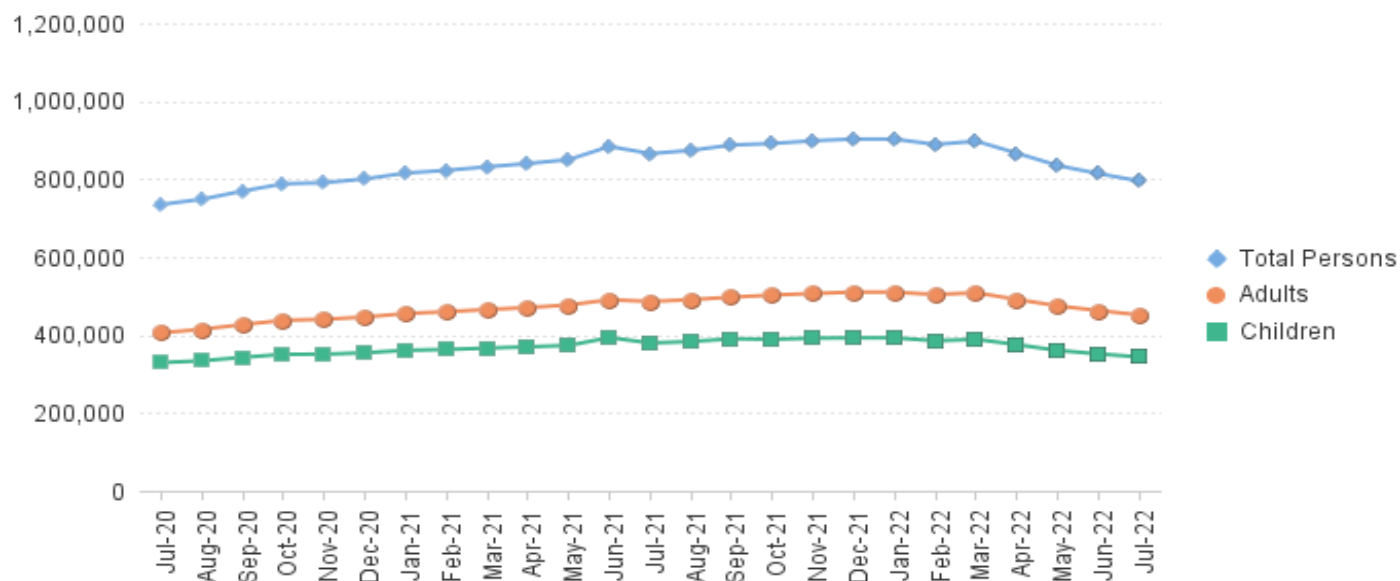
* Age 60+ and People with a disability columns are independent subsets of total persons. An individual might appear in both columns

**TABLE 6: NJ SNAP (FOOD STAMPS)
TRENDS FOR PARTICIPATING HOUSEHOLDS & PERSONS
JULY 2020 THROUGH JULY 2022 (STATEWIDE)**

Statewide NJ SNAP Households: JULY 2020 Through JULY 2022



Statewide NJ SNAP Persons: JULY 2020 Through JULY 2022



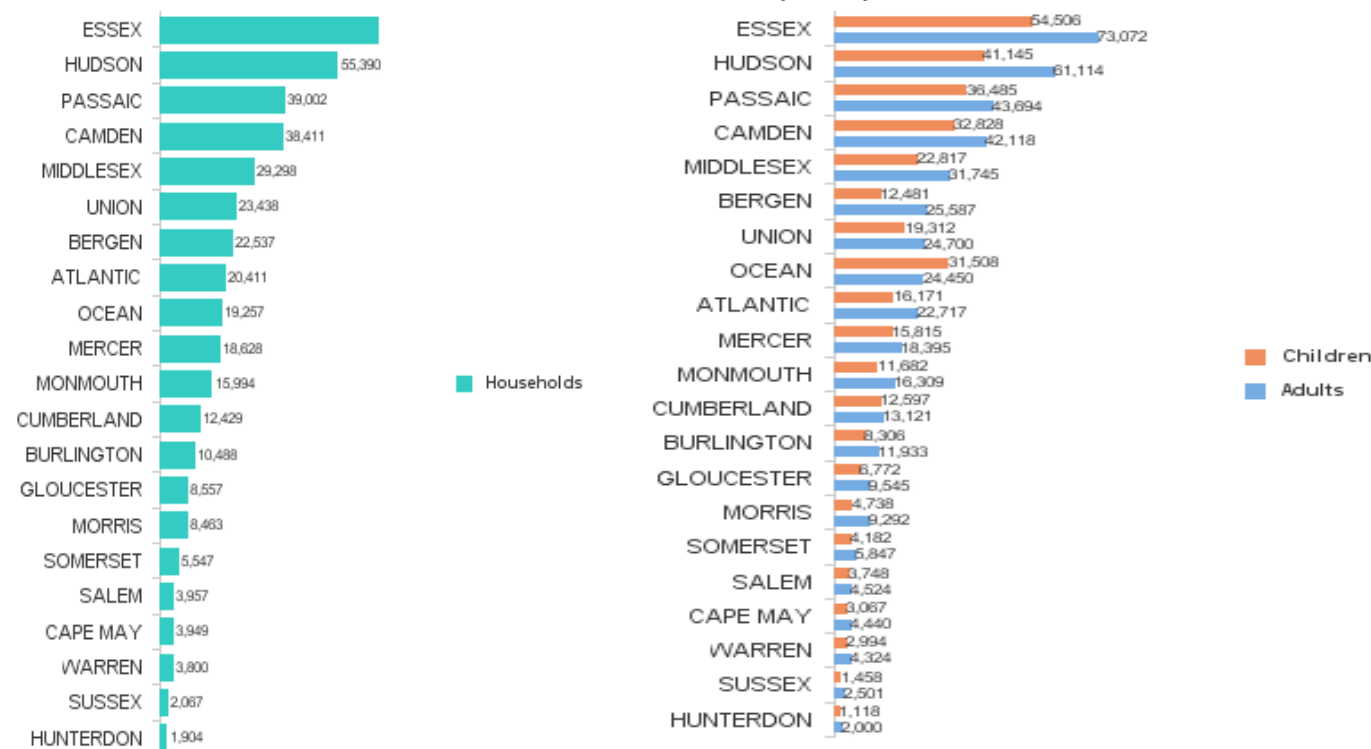
Data is derived from NJ MMIS Shared Data Warehouse Issuance files.
Effective July 2013 this data query source was converted to the SDW

TABLE 7 :
NJ SNAPNUMBER OF PARTICIPATING HOUSEHOLDS, PERSONS, ADULTS
AND CHILDREN BY COUNTY FOR JULY 2022

County	HOUSEHOLDS				PERSONS				Age 60+	People with a disability
	WFNJ/ TANF	Other low income	TOTAL	% Chng (1 Yr)	Adults	Children	TOTAL	% Chng (1 Yr)		
ATLANTIC	634	19,777	20,411	-6.2%	22,717	16,171	38,888	-6.6%	6,751	10,774
BERGEN	326	22,211	22,537	-2.4%	25,587	12,481	38,068	-1.3%	13,906	15,905
BURLINGTON	403	10,085	10,488	-11.0%	11,933	8,306	20,239	-12.3%	3,629	6,448
CAMDEN	1,443	36,968	38,411	-0.7% Δ	42,118	32,828	74,946	-1.0% Δ	10,736	19,697
CAPE MAY	84	3,865	3,949	-6.0%	4,440	3,067	7,507	-4.7%	1,303	2,267
CUMBERLAND	262	12,167	12,429	-8.5%	13,121	12,597	25,718	-8.0%	3,520	6,958
ESSEX	1,659	66,714	68,373	-6.4%	73,072	54,506	127,578	-8.5%	19,779	30,703
GLOUCESTER	252	8,305	8,557	-9.5%	9,545	6,772	16,317	-10.7%	2,981	5,939
HUDSON	1,644	53,746	55,390	-14.3% *	61,114	41,145	102,259	-14.1% *	22,291	28,168
HUNTERDON	39	1,865	1,904	3.4% Δ	2,000	1,118	3,118	0.9% Δ	734	1,102
MERCER	791	17,837	18,628	-3.4%	18,395	15,815	34,210	-3.5%	5,547	10,450
MIDDLESEX	613	28,685	29,298	-1.4%	31,745	22,817	54,562	-2.3%	13,994	17,792
MONMOUTH	228	15,766	15,994	-10.7%	16,309	11,682	27,991	-11.5%	6,694	9,713
MORRIS	110	8,353	8,463	-1.4%	9,292	4,738	14,030	-3.0%	4,783	5,408
OCEAN	349	18,908	19,257	-0.8% Δ	24,450	31,508	55,958	2.0% Δ	6,549	10,404
PASSAIC	1,039	37,963	39,002	-16.6% *	43,694	36,485	80,179	-16.7% *	14,785	18,804
SALEM	171	3,786	3,957	-5.9%	4,524	3,748	8,272	-4.0%	1,144	2,293
SOMERSET	189	5,358	5,547	-8.1%	5,847	4,182	10,029	-8.9%	2,455	3,428
SUSSEX	40	2,027	2,067	-7.3%	2,501	1,458	3,959	-3.4%	890	1,492
UNION	529	22,909	23,438	-11.3%	24,700	19,312	44,012	-12.5% *	8,725	12,073
WARREN	105	3,695	3,800	-12.3% *	4,324	2,994	7,318	-12.4%	1,298	2,348
NJ TOTAL	10,910	400,990	411,900	-7.8%	451,428	343,730	795,158	-8.1%	152,494	222,166

Δ=higher caseload % change

*=lower caseload % change

Total NJ SNAP Recipients
JULY 2022 by County

Data is derived from NJ MMIS Shared Data Warehouse.

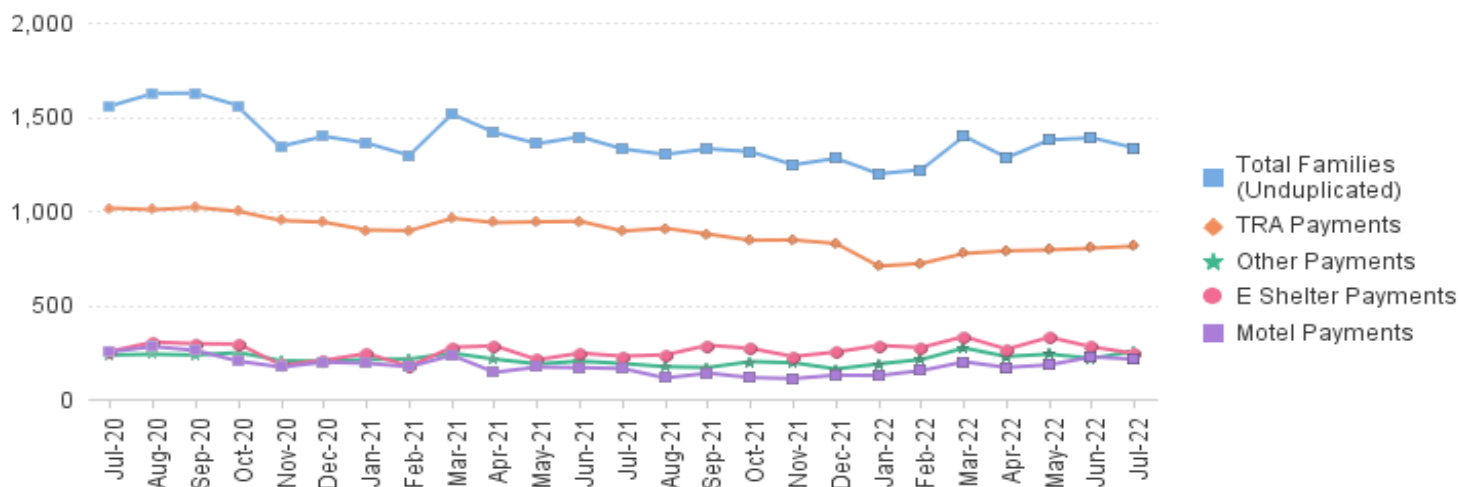
Effective July 2013 this data query source was converted to the SDW.

* Age 60+ and People with a disability columns are independent subsets of total persons. An individual might appear in both columns

TABLE 8 :

EMERGENCY
ASSISTANCE
(STATEWIDE)TOTAL NUMBER OF ELIGIBLE FAMILIES RECEIVING EMERGENCY ASSISTANCE PAYMENTS
JULY 2020 THROUGH JULY 2022 - STATEWIDE

		Total WFNJ/EA Families (Undupl)	% CHNG (1 YR)	Temp Rent Asst. Payments (Undupl)	% CHNG (1 YR)	Motel Housing Payments (Undupl)	% CHNG (1 YR)	Shelter/Transitional Housing Payments (Undupl)	% CHNG (1 YR)	Other WFNJ/EA Payments (Undupl)	% CHNG (1 YR)
2020	JUL	1,557	3.0%	1,014	33.2%	251	88.7%	254	-43.3%	234	-42.2%
	AUG	1,623	-3.0%	1,005	18.0%	279	75.5%	303	-40.9%	238	-46.3%
	SEP	1,624	-1.0%	1,018	22.1%	258	41.0%	294	-32.1%	234	-47.9%
	OCT	1,558	-14.5%	996	16.1%	201	-17.6%	292	-42.5%	247	-54.8%
	NOV	1,343	-13.6%	948	8.8%	170	19.7%	180	-52.9%	204	-50.6%
	DEC	1,395	-14.5%	939	9.8%	196	2.1%	206	-53.2%	201	-51.8%
2020	Average	1,560		970		220		303		274	
2021	JAN	1,359	-23.1%	898	-5.4%	190	-24.3%	242	-42.7%	210	-59.1%
	FEB	1,294	-19.1%	894	-4.1%	172	-5.0%	174	-52.3%	213	-47.9%
	MAR	1,513	-12.2%	960	-2.0%	232	19.0%	275	-32.3%	244	-47.2%
	APR	1,415	-2.7%	937	-2.4%	142	-7.2%	283	-15.3%	212	-47.2%
	MAY	1,356	-6.1%	941	5.7%	170	-28.6%	209	-22.6%	187	14.7%
	JUN	1,393	-14.6%	944	-6.9%	167	-37.0%	244	-20.0%	201	-14.1%
	JUL	1,328	-14.7%	892	-12.0%	162	-35.5%	228	-10.2%	189	-19.2%
	AUG	1,299	-20.0%	907	-9.8%	112	-59.9%	235	-22.4%	172	-27.7%
	SEP	1,329	-18.2%	876	-13.9%	138	-46.5%	286	-2.7%	168	-28.2%
	OCT	1,313	-15.7%	843	-15.4%	114	-43.3%	269	-7.9%	199	-19.4%
	NOV	1,244	-7.4%	845	-10.9%	109	-35.9%	226	25.6%	193	-5.4%
	DEC	1,278	-8.4%	826	-12.0%	127	-35.2%	250	21.4%	160	-20.4%
2021	Average	1,343		897		153		243		196	
2022	JAN	1,196	-12.0%	706	-21.4%	125	-34.2%	285	17.8%	187	-11.0%
	FEB	1,218	-5.9%	720	-19.5%	151	-12.2%	274	57.5%	210	-1.4%
	MAR	1,396	-7.7%	773	-19.5%	198	-14.7%	332	20.7%	271	11.1%
	APR	1,282	-9.4%	787	-16.0%	168	18.3%	265	-6.4%	226	6.6%
	MAY	1,376	1.5%	792	-15.8%	182	7.1%	328	56.9%	239	27.8%
	JUN	1,387	-0.4%	801	-15.1%	224	34.1%	277	13.5%	216	7.5%
	JUL	1,333	0.4%	812	-9.0%	212	30.9%	242	6.1%	255	34.9%
2022	Average	1,313		770		180		286		229	

NJ STATEWIDE
Families Receiving Emergency Assistance
JULY 2020 THROUGH JULY 2022

WFNJ/EA data is derived from NJ MMIS Shared Data Warehouse.
Effective July 2013 this data query source was converted to the SDW.

* Effective Feb '11 Transitional Housing Payments were removed from 'Other EA Payments' and added to 'Shelter Payments'.

TABLE 9 :

EMERGENCY ASSISTANCE (BY COUNTY) **TOTAL NUMBER OF ELIGIBLE FAMILIES RECEIVING EMERGENCY ASSISTANCE PAYMENTS BY COUNTY (UNDULICATED CASES) FOR JULY 2022**

County	TOTAL	%	Temp	Motel	Shelter/Transitional	Other	SSI
	WFNJ/EA Families (Undupl)	CHNG From JUL 21	Rent Asst. Payments (Undupl)	Housing Payments (Undupl)	Housing Payments (Undupl)	WFNJ/EA Payments (Undupl)	Receipients Receiving EA **
ATLANTIC	39	-26.4% *	32	2	0	6	43
BERGEN	45	-8.2%	29	0	12	7	47
BURLINGTON	73	43.1%	11	44	23	4	45
CAMDEN	34	-22.7%	9	5	19	1	17
CAPE MAY	14	-22.2%	6	8	0	1	8
CUMBERLAND	0	0%	0	0	0	0	1
ESSEX	71	-45.8% *	25	0	36	12	8
GLOUCESTER	9	12.5%	1	1	2	6	13
HUDSON	267	29.6%	214	11	36	82	66
HUNTERDON	11	37.5%	5	0	0	6	7
MERCER	125	40.4%	88	32	0	32	81
MIDDLESEX	94	-29.9% *	57	27	2	22	45
MONMOUTH	30	66.7% Δ	1	5	25	0	67
MORRIS	15	50.0% Δ	7	7	0	1	20
OCEAN	75	-23.5%	47	30	0	1	12
PASSAIC	242	5.2%	187	10	35	41	42
SALEM	5	150.0% Δ	2	0	2	2	1
SOMERSET	69	1.5%	45	9	13	14	59
SUSSEX	4	0%	0	0	4	0	1
UNION	102	3.0%	41	19	32	16	39
WARREN	9	-18.2%	5	2	1	1	3
NJ Total	1,333	0.4%	812	212	242	255	625

Δ=higher caseload % change

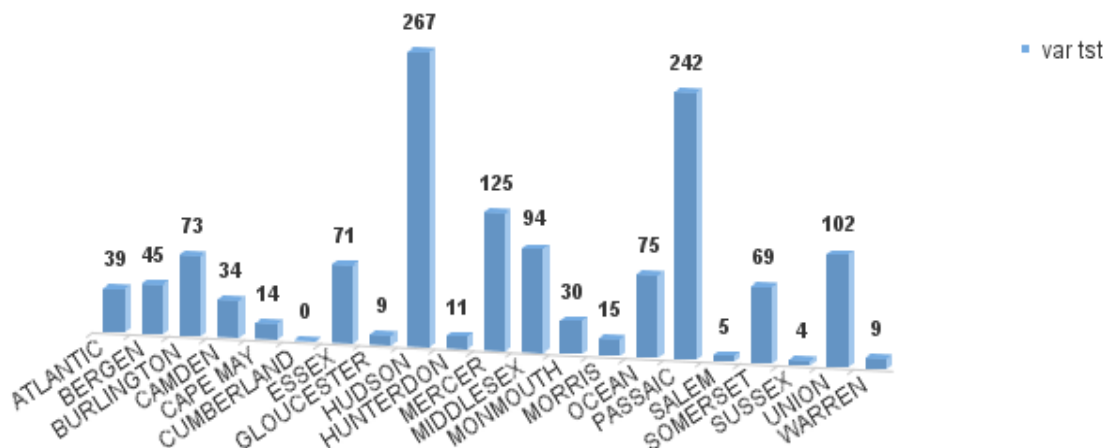
*=lower caseload % change

** SSI-EA includes pay codes 22 and 24, data is derived from NJ Division of Family Development FAMIS Report #FM430-03A

WFNJ/EA data is derived from NJ MMIS Shared Data Warehouse.

Effective July 2013 this data query source was converted to the SDW.

Number WFNJ Families Receiving EA by County
JULY 2022



**TABLE 10:
GENERAL
ASSISTANCE
PROGRAM**

**NUMBER OF EMPLOYABLE AND UNEMPLOYABLE RECIPIENTS
AND EMERGENCY ASSISTANCE PAYMENTS - STATEWIDE
JULY 2020 THROUGH JULY 2022**

PROGRAM	Total Cases						Emergency Assistance Cases			
	Employable	% Chng (1 Yr)	Unemployable	% Chng (1 Yr)	Total	% Chng (1 Yr)	Temporary Rental Assistance	Other GA-EA	Total	% Chng (1 Yr)
2020 JUL	7,994	97.4%	5,520	-9.2%	13,514	33.4%	905	1,256	2,161	8.4%
AUG	8,119	86.7%	5,261	-16.0%	13,380	26.1%	875	1,188	2,063	-1.5%
SEP	8,176	93.4%	5,127	-17.2%	13,303	27.7%	849	1,333	2,182	1.1%
OCT	8,156	104.9%	4,988	-17.1%	13,144	31.5%	855	1,107	1,962	-11.2%
NOV	8,228	111.0%	4,822	-19.5%	13,050	32.0%	835	884	1,719	-17.2%
DEC	8,540	118.0%	4,691	-21.9%	13,231	33.3%	833	1,111	1,944	-4.7%
2020 AVERAGE	6,875		5,461		12,337		885	1,110	1,995	
2021 JAN	8,978	118.5%	4,553	-23.1%	13,531	34.9%	848	1,240	2,088	-1.8%
FEB	9,089	116.1%	4,407	-25.7%	13,496	33.2%	809	991	1,800	-10.3%
MAR	9,630	97.8%	4,421	-26.2%	14,051	29.4%	819	1,405	2,224	11.4%
APR	9,499	70.0%	4,288	-26.9%	13,787	20.4%	832	1,204	2,036	15.2%
MAY	9,630	38.8%	4,421	-23.6%	14,051	10.5%	819	491	1,310	-28.7%
JUN	9,007	18.7%	4,130	-32.8%	13,247	0.1%	794	1,108	1,902	-12.4%
JUL	9,090	13.7%	4,078	-26.1%	13,168	-2.6%	833	1,121	1,954	-9.6%
AUG	9,120	12.3%	3,982	-24.3%	13,102	-2.1%	753	1,091	1,844	-10.6%
SEP	9,045	10.6%	3,914	-23.7%	12,959	-2.6%	787	1,114	1,901	-12.9%
OCT	9,309	14.1%	3,875	-22.3%	13,184	0.3%	757	1,061	1,818	-7.3%
NOV	9,668	17.5%	3,853	-20.1%	13,521	3.6%	711	1,011	1,722	0.2%
DEC	10,040	17.6%	3,855	-17.8%	13,895	5.0%	742	1,071	1,813	-6.7%
2021 AVERAGE	9,342		4,148		13,499		792	1,076	1,868	
2022 JAN	10,239	14.0%	3,801	-16.5%	14,040	3.8%	677	947	1,624	-22.2%
FEB	10,687	17.6%	3,812	-13.5%	14,499	7.4%	727	1,126	1,853	2.9%
MAR	11,462	19.0%	3,870	-12.5%	15,332	9.1%	719	1,399	2,118	-4.8%
APR	11,810	24.3%	3,823	-10.8%	15,633	13.4%	742	1,196	1,938	-4.8%
MAY	12,039	25.0%	3,805	-13.9%	15,844	12.8%	750	1,152	1,902	45.2%
JUN	12,306	36.6%	3,858	-6.6%	16,164	22.0%	782	1,250	2,032	6.8%
JUL	12,451	37.0%	3,862	-5.3%	16,313	23.9%	758	1,196	1,954	0.0%
2022 AVERAGE TO DATE	11,571		3,833		15,404		736	1,181	1,917	

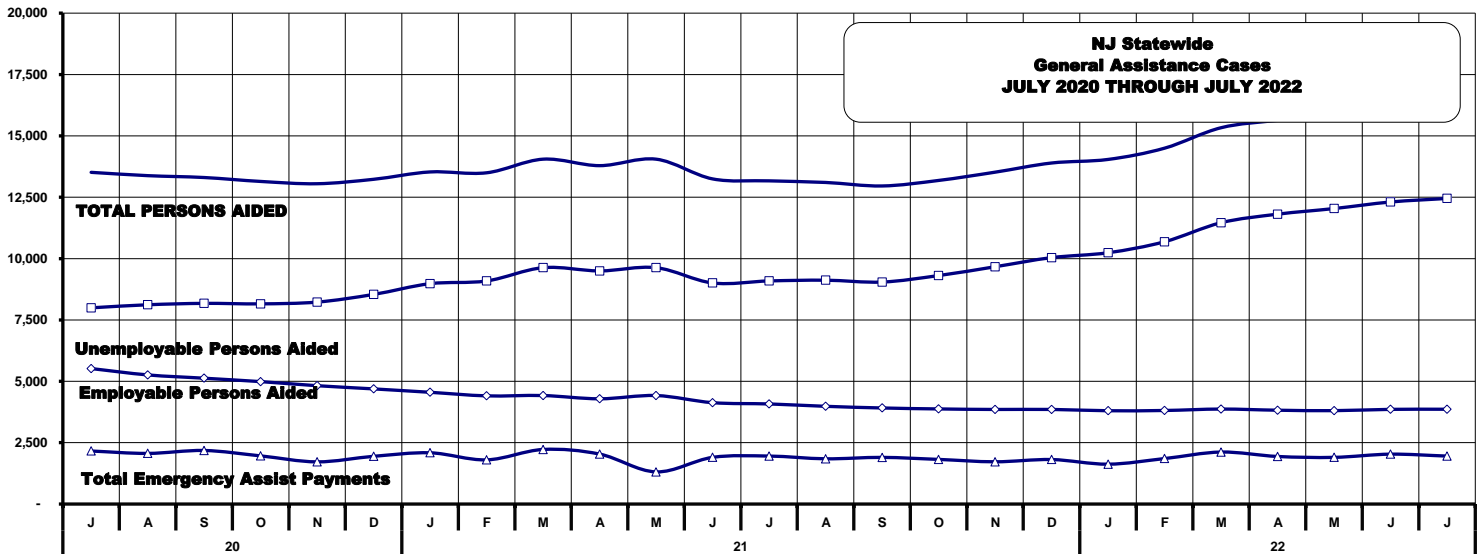


TABLE 11:
GENERAL
ASSISTANCE
PROGRAM

EMPLOYABLE AND UNEMPLOYABLE CASES
AND EMERGENCY ASSISTANCE CASES RECEIVING PAYMENTS BY COUNTY
JULY 2022

PROGRAM	Total Cases						Emergency Assistance Cases				
	Employable	% Chng (1 Yr)	Unemployable	% Chng (1 Yr)	Total	% Chng (1 Yr)	Temporary Rental Assistance	Other GA-EA	Total	% Chng (1 Yr)	
ATLANTIC	1,371	78.3%	182	-9.0%	1,553	60.3%	Δ	87	17	104	7.2%
BERGEN	411	31.7%	186	-1.6%	597	19.2%		81	26	107	0.9%
BURLINGTON	518	54.6%	178	-15.6%	696	27.5%		7	104	111	4.7%
CAMDEN	2,164	71.3%	506	9.5%	2,670	54.8%		37	78	115	-27.7%
CAPE MAY	121	47.6%	45	7.1%	166	33.9%		17	36	53	23.3%
CUMBERLAND	291	-2.7%	116	30.3%	407	4.9%		0	4	4	33.3%
ESSEX	1,381	43.9%	280	-14.9%	1,661	28.9%		21	148	169	19.0%
GLOUCESTER	235	51.6%	110	-20.9%	345	17.3%		2	20	22	-29.0%
HUDSON	1,611	-16.9%	435	-19.0%	2,046	-17.4%	*	116	88	204	2.0%
HUNTERDON	170	139.4%	59	31.1%	229	97.4%	Δ	10	28	38	58.3%
MERCER	613	55.6%	249	-14.4%	862	25.8%		58	47	105	11.7%
MIDDLESEX	530	24.7%	350	11.8%	880	19.2%		80	76	156	-26.4%
MONMOUTH	330	51.4%	179	8.5%	509	32.9%		0	117	117	36.0%
MORRIS	252	82.6%	168	12.8%	420	46.3%		53	37	90	30.4%
OCEAN	447	32.6%	218	-1.8%	665	19.0%		44	55	99	-27.7%
PASSAIC	618	37.9%	259	-20.8%	877	13.2%		41	18	59	-7.8%
SALEM	168	31.3%	35	-27.1%	203	15.3%		0	4	4	0.0%
SOMERSET	244	93.7%	54	-8.5%	298	61.1%	Δ	43	71	114	62.9%
SUSSEX	49	-9.3%	18	-21.7%	67	-13.0%	*	0	10	10	-47.4%
UNION	794	55.4%	177	17.2%	971	46.7%		49	182	231	-3.3%
WARREN	133	5.6%	58	-33.3%	191	-10.3%	*	12	30	42	-14.3%
NJ TOTAL	12,451	37.0%	3,862	-5.3%	16,313	23.9%		758	1,196	1,954	0.0%

Δ= ↑ Caseload %

* = ↓ Caseload %

**TABLE 12:
OFFICE OF
CHILD SUPPORT
SERVICES**

**OFFICE OF CHILD SUPPORT SERVICES
QUARTERLY PERFORMANCE REPORT
STATE SUMMARY
TITLE IV-D SOURCE COLLECTION REPORT
Comparison of Quarter-3 (FFY 2021 vs. FFY 2022)**

COLLECTION SOURCE	TOTAL 4/1/2021 - 6/30/2021	% OF TOTAL COLLECTIONS	TOTAL 4/1/2022 - 6/30/2022	% OF TOTAL COLLECTIONS	DOLLAR CHANGE	% CHANGE
FEDERAL TAX	\$26,914,603	8.34%	\$17,731,625	6.35%	\$ (9,182,978)	-34.12%
STATE TAX	\$3,024,509	0.94%	\$2,668,025	0.96%	\$ (356,484)	-11.79%
UIB	\$31,217,516	9.68%	\$5,421,741	1.94%	\$ (25,795,775)	-82.63%
INC WITHHOLD	\$188,440,986	58.42%	\$185,627,039	66.46%	\$ (2,813,947)	-1.49%
FROM OTHER STATES	\$12,916,085	4.00%	\$10,523,803	3.77%	\$ (2,392,282)	-18.52%
ADMIN ENFORCEMENT	\$6,297,192	1.95%	\$4,052,911	0.01	\$ (2,244,281)	-35.64%
OTHER	\$53,729,487	16.66%	\$53,297,540	19.08%	\$ (431,947)	-0.80%
TOTAL COLLECTIONS*	\$322,540,378	100%	\$279,322,684	100%	\$ (43,217,694)	-13.40%
DISBURSED COLLECTIONS**	\$278,577,027		\$242,148,920		\$ (36,428,107)	-13.08%

* Includes collections on both current support and arrears.

** Includes collections on both current support and arrears; also includes money sent to other states.

SOURCE: NJKiDS (Based on Federal Quarterly Report of Collections - OCSE-34A except Disbursed Collections)

Disbursed Collections obtained from Federal Data Report - OCSE-157, which is reported annually to Congress and used in the calculation of incentive dollars earned by each state.

**TABLE 14:
OFFICE OF
CHILD SUPPORT
SERVICES**

**OFFICE OF CHILD SUPPORT SERVICES
STATE SUMMARY
TITLE IV-D REPORT OF CASES WITH ORDERS**
Comparison of July (FFY 2021 vs. FFY 2022)

County	JULY 2021			JULY 2022			Increase or Decrease (-) from FFY 2021 to FFY 2022
	Total Cases	Cases with Orders	% of Cases with Orders	Total Cases	Cases with Orders	% of Cases with Orders	
Atlantic	10,414	9,738	93.5%	9,955	9,222	92.6%	-0.9%
Bergen	10,634	10,405	97.8%	10,227	9,952	97.3%	-0.5%
Burlington	11,533	10,997	95.4%	11,193	10,420	93.1%	-2.3%
Camden	25,715	24,587	95.6%	24,619	23,230	94.4%	-1.3%
Cape May	2,674	2,546	95.2%	2,574	2,450	95.2%	0.0%
Cumberland	10,827	10,436	96.4%	10,436	9,900	94.9%	-1.5%
Essex	36,031	31,904	88.5%	34,288	29,930	87.3%	-1.3%
Gloucester	9,257	8,957	96.8%	8,886	8,444	95.0%	-1.7%
Hudson	17,660	16,079	91.0%	17,184	15,368	89.4%	-1.6%
Hunterdon	1,271	1,194	93.9%	1,193	1,119	93.8%	-0.1%
Mercer	11,771	10,875	92.4%	11,355	10,187	89.7%	-2.7%
Middlesex	15,376	14,537	94.5%	14,999	13,910	92.7%	-1.8%
Monmouth	11,853	11,388	96.1%	11,118	10,486	94.3%	-1.8%
Morris	5,189	5,070	97.7%	5,002	4,815	96.3%	-1.4%
Ocean	12,985	12,590	97.0%	12,517	11,968	95.6%	-1.3%
Passaic	17,136	15,279	89.2%	16,207	14,294	88.2%	-1.0%
Salem	3,772	3,615	95.8%	3,590	3,394	94.5%	-1.3%
Somerset	3,994	3,809	95.4%	3,858	3,593	93.1%	-2.2%
Sussex	2,307	2,284	99.0%	2,281	2,221	97.4%	-1.6%
Union	16,375	15,702	95.9%	15,867	15,059	94.9%	-1.0%
Warren	2,584	2,475	95.8%	2,241	2,146	95.8%	0.0%
NJ TOTALS	239,358	224,467	93.8%	229,590	212,108	92.4%	-1.4%

SOURCE: NJKIDS (Based on Federal Performance Measures - OCSE-157)

TABLE 15:
OFFICE OF
CHILD SUPPORT
SERVICES

OFFICE OF CHILD SUPPORT SERVICES
STATE SUMMARY
TITLE IV-D COLLECTIONS ON CURRENT SUPPORT
Comparison of July (FFY 2021 vs. FFY 2022)

County	JULY 2021			JULY 2022			Increase or Decrease (-) from FFY 2021 to FFY 2022
	Total Current Support Due	Total Current Support Distributed	Total Collection Rate	Total Current Support Due	Total Current Support Distributed	Total Collection Rate	
Atlantic	\$3,510,275	\$2,348,947	66.9%	\$3,271,660	\$2,047,066	62.6%	-4.3%
Bergen	\$7,633,319	\$5,869,631	76.9%	\$7,138,124	\$5,272,820	73.9%	-3.0%
Burlington	\$5,176,246	\$3,695,107	71.4%	\$4,765,048	\$3,216,682	67.5%	-3.9%
Camden	\$7,489,489	\$4,687,936	62.6%	\$6,825,698	\$3,989,553	58.4%	-4.1%
Cape May	\$1,029,968	\$724,718	70.4%	\$945,756	\$628,512	66.5%	-3.9%
Cumberland	\$2,863,997	\$1,754,868	61.3%	\$2,621,587	\$1,524,868	58.2%	-3.1%
Essex	\$9,833,842	\$6,103,666	62.1%	\$9,074,935	\$5,247,444	57.8%	-4.2%
Gloucester	\$3,905,172	\$2,672,340	68.4%	\$3,580,733	\$2,346,280	65.5%	-2.9%
Hudson	\$6,746,966	\$4,653,996	69.0%	\$6,290,016	\$4,049,096	64.4%	-4.6%
Hunterdon	\$1,108,750	\$918,253	82.8%	\$991,057	\$816,118	82.3%	-0.5%
Mercer	\$3,674,391	\$2,429,317	66.1%	\$3,425,839	\$2,135,665	62.3%	-3.8%
Middlesex	\$6,919,454	\$4,915,232	71.0%	\$6,341,951	\$4,252,355	67.1%	-4.0%
Monmouth	\$6,464,561	\$4,851,447	75.0%	\$5,864,045	\$4,232,807	72.2%	-2.9%
Morris	\$3,963,002	\$2,988,211	75.4%	\$3,727,429	\$2,746,361	73.7%	-1.7%
Ocean	\$5,969,535	\$4,429,139	74.2%	\$5,546,042	\$3,919,326	70.7%	-3.5%
Passaic	\$6,007,923	\$3,922,127	65.3%	\$5,420,518	\$3,356,016	61.9%	-3.4%
Salem	\$1,041,234	\$637,565	61.2%	\$976,328	\$576,991	59.1%	-2.1%
Somerset	\$2,729,029	\$2,291,939	84.0%	\$2,424,684	\$1,914,977	79.0%	-5.0%
Sussex	\$1,618,741	\$1,260,401	77.9%	\$1,479,769	\$1,119,704	75.7%	-2.2%
Union	\$6,369,756	\$4,522,120	71.0%	\$6,017,699	\$4,009,249	66.6%	-4.4%
Warren	\$1,153,423	\$852,785	73.9%	\$1,056,352	\$773,868	73.3%	-0.7%
NJ TOTALS	\$95,209,074	\$66,529,748	69.9%	\$87,785,272	\$58,175,758	66.3%	-3.6%

SOURCE: NJKIDS (Based on Federal Performance Measures - OCSE-157)

TABLE 16:
OFFICE OF
CHILD SUPPORT
SERVICES

OFFICE OF CHILD SUPPORT SERVICES
STATE SUMMARY
TITLE IV-D CASES ARREARS COLLECTION REPORT
Comparison of July (FFY 2021 vs. FFY 2022)

County	JULY 2021			JULY 2022			Increase or Decrease (-) from FFY 2021 to FFY 2022
	Total Cases with Arrears	Total Amount Collected	Average Arrears Collection per Case	Total Cases with Arrears	Total Amount Collected	Average Arrears Collection per Case	
Atlantic	6,369	\$867,657	\$136.23	6,084	\$564,608	\$92.80	-\$43.43
Bergen	6,530	\$1,452,391	\$222.42	6,361	\$886,768	\$139.41	-\$83.01
Burlington	7,148	\$1,010,921	\$141.43	6,783	\$806,725	\$118.93	-\$22.49
Camden	14,968	\$1,852,797	\$123.78	13,945	\$1,523,532	\$109.25	-\$14.53
Cape May	1,695	\$233,446	\$137.73	1,602	\$191,791	\$119.72	-\$18.01
Cumberland	6,563	\$706,666	\$107.67	6,081	\$508,230	\$83.58	-\$24.10
Essex	19,726	\$2,890,255	\$146.52	18,231	\$1,972,775	\$108.21	-\$38.31
Gloucester	5,855	\$774,163	\$132.22	5,511	\$587,295	\$106.57	-\$25.65
Hudson	10,547	\$1,460,078	\$138.44	10,195	\$1,092,853	\$107.19	-\$31.24
Hunterdon	720	\$151,675	\$210.66	690	\$176,300	\$255.51	\$44.85
Mercer	7,248	\$1,035,735	\$142.90	6,675	\$724,102	\$108.48	-\$34.42
Middlesex	9,400	\$1,487,377	\$158.23	8,889	\$1,024,460	\$115.25	-\$42.98
Monmouth	7,248	\$1,201,028	\$165.70	6,607	\$830,715	\$125.73	-\$39.97
Morris	3,278	\$637,191	\$194.38	3,151	\$465,099	\$147.60	-\$46.78
Ocean	7,777	\$1,149,429	\$147.80	7,341	\$927,710	\$126.37	-\$21.42
Passaic	10,147	\$1,374,012	\$135.41	9,414	\$1,041,883	\$110.67	-\$24.74
Salem	2,240	\$244,189	\$109.01	2,033	\$168,555	\$82.91	-\$26.10
Somerset	2,391	\$368,357	\$154.06	2,284	\$325,847	\$142.67	-\$11.39
Sussex	1,456	\$349,933	\$240.34	1,407	\$247,793	\$176.11	-\$64.22
Union	9,877	\$1,571,019	\$159.06	9,646	\$1,092,284	\$113.24	-\$45.82
Warren	1,525	\$237,362	\$155.65	1,399	\$139,345	\$99.60	-\$56.04
NJ TOTALS	142,708	\$21,055,681	\$147.54	134,329	\$15,298,670	\$113.89	-\$33.65

SOURCE: OCSE-157 Child Support Enforcement Annual Data Report

Table 17**WORK FIRST NEW JERSEY STATISTICAL SUMMARY****WFNJ****JULY 2022**

COUNTY	EMPLOYMENT DIRECTED ACTIVITIES			EMPLOYED OPEN (WFNJ RECIPIENT)	SUPPORT SERVICES ON ACTIVE CASE		CLOSED FOR EMPLOYMENT THIS MONTH	POST ASSISTANCE CHILD CARE
	CWEP	ALL OTHER TRAINING	JOB SEARCH		CHILD CARE	TRAINING REL. EXPENSES		
ATLANTIC	12	72	57	53	15	97	7	32
BERGEN	11	0	0	7	17	0	3	4
BURLINGTON	107	43	72	29	27	9	3	7
CAMDEN	20	139	5	46	40	0	6	15
CAPE MAY	0	10	13	8	2	3	1	4
CUMBERLAND	0	21	23	14	14	56	2	3
ESSEX	35	160	2	56	52	50	9	48
GLOUCESTER	0	4	0	18	11	1	3	2
HUDSON	2	331	19	98	122	44	21	16
HUNTERDON	0	0	0	0	2	0	0	0
MERCER	6	258	0	75	108	7	14	35
MIDDLESEX	0	39	26	19	19	0	7	10
MONMOUTH	0	15	2	21	20	2	3	17
MORRIS	0	5	0	1	2	0	1	0
OCEAN	1	136	0	8	19	3	4	10
PASSAIC	1	35	16	20	36	9	4	9
SALEM	0	11	0	3	7	0	3	0
SOMERSET	9	18	0	19	14	16	1	4
SUSSEX	0	0	1	0	0	1	0	0
UNION	2	54	0	4	12	0	1	1
WARREN	0	4	0	6	4	0	2	3
STATE TOTAL	206	1,355	236	505	543	298	95	220

Data is derived from NJ Division of Family Development's FAMIS Reports RM064-01 & RM703-51, AdHoc Reports 5549 & 5598 and SDW Report WR00022WZ_CC

DIVISION OF FAMILY DEVELOPMENT CURRENT PROGRAM STATISTICS
JULY 2022

ACRONYMS

EMERGENCY ASSISTANCE (EA) - Payments to those eligible for WFNJ/TANF or WFNJ/GA, authorized during the 30 consecutive days immediately following the emergency (defined as a substantial loss of shelter, food, clothing, or household furnishings by fire, flood or other similar disaster) or if eligible individual or family is in an imminent or actual state of homelessness.

NJ SNAP - Formerly the Food Stamp Program, now known as NJ SNAP (NJ Supplemental Nutrition Assistance Program) authorized by Congress as a nutritional supplement program to provide low income households with more food of greater variety and better nutrition. Program eligibility is based on household income, resources, and expenses for medical, shelter, and dependent care. CWA staff refers certain recipients to the New Jersey Department of Labor for participation in the Food Stamp Employment and Training Program.

FAMIS: Family Assistance Management Information System

GAAS: General Assistance Automated System

NJKIDS: New Jersey Kids Deserve Support (Child Support Information Management System)

NJ MMIS SHARED DATA WAREHOUSE: The Shared Data Warehouse (SDW) is the repository for New Jersey's DFD and Medicaid data. Since 2003, OptumInsight has administered the SDW and provided access to the data through a reporting tool known as Business Objects.

OMEGA: Online Management of Economic Goal Achievement

SSI-EA: Supplemental Security Income-Emergency Assistance

WFNJ: Work First New Jersey - Fully implemented July 1, 1997, this is New Jersey's welfare reform program which responds to the requirements of the Federal Personal Responsibility and Work Opportunity Reconciliation Act (**PRWORA**) of 1996. PRWORA established Temporary Assistance for Needy Families (**TANF**) as the replacement for AFDC cash assistance. WFNJ includes two segments, **WFNJ/TANF** for families with children, and **WFNJ/GA** (General Assistance) for single adults and couples without dependent children. WFNJ emphasizes achieving self-sufficiency and limits lifetime receipt of financial assistance to a total of five years.

**DIVISION OF FAMILY DEVELOPMENT CURRENT PROGRAM STATISTICS
JULY 2022**

EXPLANATORY NOTES

The Department of Human Services Division of Family Development provides basic income and an opportunity to achieve self-sufficiency for individuals and families served by the Division's programs. The Division provides leadership, direction and supervision to those public agencies responsible for administering those programs and plans for and develops policies to promote self-sufficiency.

WFNJ STATISTICAL SUMMARY (TABLE 17)

Employment Directed Activities (EDA) - From Activities Summary Report (OMEGA report # RM064). Unduplicated count of persons participating in Community Work Experience Program (CWEP), All Other Training, or Job Search.

Number of Persons Employed This Month, Still Receiving TANF - Individuals with open "empl" activity on OMEGA. Ad hoc report.

Participants Receiving Child Care Services - From Issuance Disbursement Summary (OMEGA report # RM703). Total number of active participants who show receipt of Child Care.

Number of Persons Closed on FAMIS Due to Employment - From FAMIS report #5549-RM-2

Post TANF and Receiving Child Care - Persons no longer in receipt of TANF but still receiving child care. From Share Data Warehouse Child Care case count based on Child Care payments (SDW report WR00022WZ_CC).