

974.905
844.4
c.1

DEPARTMENT OF HUMAN SERVICES
INTER-OFFICE COMMUNICATION

DATE October 3, 1997

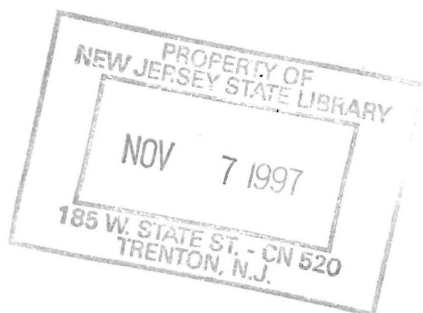
TO William Waldman
Commissioner

FROM Karen Highsmith
Director



SUBJECT CURRENT PROGRAM STATISTICS

Attached please find CURRENT PROGRAM STATISTICS for July 1997. Included are TANF-oriented data, a new WFNJ Statistical summary and estimated TANF participation rates for May - July 1997. Should you have any questions, please feel free to call me.



KH:kas:c

Attachments

c Guhl
Grant
Miller
Tencza

State of New Jersey
Department of Human Services
Division of Family Development

CURRENT PROGRAM STATISTICS



July 1997
Karen Highsmith, Director

State of New Jersey
Department of Human Services
Division of Family Development

CURRENT PROGRAM STATISTICS
July 1997

TABLE OF CONTENTS

	Page
Highlights of Current Program Statistics	1-3
 Statistics by County, July 1997	
Table 1 TANF.....	4
Graph 1 Current TANF Families.....	4
Table 2 Food Stamp Program.....	5
Graph 2 Current Food Stamp Households/Persons	5
Table 3 TANF/SSI Emergency Assistance Program	6
Graph 3 Current TANF Families Receiving Emergency Assistance	6
Table 4 WFNJ Statistical Summary	7
 State Summary, 1995 - 1997	
Table 5 TANF/AFDC, July 1995 - July 1997	8
Graph 4 Families Receiving AFDC, 7/95 - 7/97	8
Table 6 Food Stamp Program, July 1995 - July 1997	9
Graph 5 Food Stamp Households, 7/95 - 7/97	9
Graph 6 Food Stamp Recipients, 7/95 - 7/97.....	10
Table 7 TANF/AFDC Emergency Assistance Program, July 1995 - July 1997	11
Graph 7 TANF/AFDC Families Receiving Emergency Assistance, 7/95 - 7/97	11
Table 8 TANF Participation Rates, by County and Statewide, May 1997 - July 1997	12
Graph 8 TANF Participation Rates, 5/97 - 7/97	13
Table 9 General Assistance, and GA Emergency Assistance, May 1995 - May 1997	14
Graph 9 General Assistance Recipients, 5/95-5/97	14
Table 10 Child Support and Paternity, Federal Fiscal Years 1996-1997	15
Explanatory Notes.....	16-17
 Supplement	
Table 11 WFNJ General Assistance Recipients and EA Payments by County and Municipality, May 1997	18

Highlights of Current Program Statistics

TANF (Tables 1 and 5, Graphs 1 and 4)

Less than 98,000 eligible families in New Jersey were receiving TANF as of the end of July 1997:

- **88,300** single head of household families
- **4500** two-parent families
- **4800** Medicaid Only families.
- The largest numbers of families by county: Essex with **25,300**, Hudson with **15,400**, and Camden County with less than **11,600**. (53.6 percent of all TANF families). Other counties ranged from **123** families in Hunterdon to less than **6,400** in Passaic County, with seven counties below **1000** families.

There were about 2200 fewer eligible TANF families in July 1997 than in June 1997, with a decline of 21,500, or about 18 percent, over the number of AFDC families two years ago.

- There were **1900** fewer eligible single head families in July 1997 than in June 1997 and almost **19,000** less than two years ago.
- Two parent families declined from about **6900** in July 1995 to about **4500** in July 1997.
- Medicaid Only families averaged nearly **5200** for 1995, and less than **4900** for the first seven months of 1997. There were nearly **400** less Medicaid Only families in July 1997 than a year earlier.

FOOD STAMP PROGRAM (Tables 2 and 6, Graphs 2, 5, and 6)

At the end of July 1997, less than 193,000 households were participating in the Food Stamp Program:

- About **89,000** TANF households with **284,500** persons.
- About **103,500** Other Low Income households with less than **157,000** persons.
- With a total of more than **441,000** persons, including **210,000** adults and **231,000** children
- **49.5 percent** of the households were in Essex (**49,000**), Hudson (**27,400**) and Camden (**18,800**) Counties.

The number of Food Stamp households in New Jersey remained in the 220,000 to 223,000 range from July 1995 through June 1996. Thereafter Food Stamp households declined substantially (from about 220,000 in June 1996 to less than 193,000 in July 1997).

- There have been fewer AFDC/TANF(FS) households than Other Low Income households receiving Food Stamps since November 1995, with a difference of more than **14,000** in July 1997. There were about **109,000** Other Low Income households in 1995, a peak close to **115,000** in May 1996, and a decline to less than **104,000** by July 1997. There were nearly **112,000** AFDC(FS) households in July 1995 and only about **89,000** TANF(FS) in July 1997.
- From July 1995 through May 1996 there were nearly **515,000** Total Recipients. The level then dropped substantially and was about **441,000** by July 1997, a decline of more than **14 percent**.
- The number of Recipient Adults remained above **240,000** from July 1995 through July 1996. From July 1996 through July 1997 the number declined by more than **30,000**.
- The number of Recipient Children declined by more than **40,000**, from over **271,000** in July 1995 to about **231,000** in July 1997 (**15 percent**).

EMERGENCY ASSISTANCE (Tables 3, 7 and 9, Graphs 3, 7 and 9)

In July 1997 Emergency Assistance (EA) payments were made for 3,538 eligible TANF families and 322 SSI recipients in New Jersey. For TANF families this included payments for:

- **1308 families with Temporary Rental Assistance (TRA)**
- **238 motel placements and 306 emergency shelter placements**
- **1686 families accounted for all other TANF-EA payments, including back rent, back utilities, security deposits, furnishings, clothing and food allowance, or transitional housing.**
- **EA payments were made for 1102 TANF families in Essex County, and for less than 400 TANF families in each of the other counties.**

In the past two years, the average number of EA payments for TANF/AFDC families was 5800 in 1995, and 4800 in 1996. For the first seven months of 1997 the average was about 3900.

- **The number of TRA payments provided for TANF/AFDC families each month has declined steadily from about 2150 in July 1995 to slightly more than 1300 in July 1997.**
- **Emergency Shelter payments have been provided for around 300 to 400 families each month in the last two years.**
- **Payments for Motel Housing declined from an average of 405 in 1995 to an average of 276 for the first seven months of 1997.**
- **Other EA payments were made for an average of nearly 2800 families in 1995, 2400 in 1996, and about 1900 in the first seven months of 1997.**

For 1995 there were an average of 7400 GA EA recipients, and 6800 for 1996. Of those, GA TRA payments were made to an average of 4400 recipients in 1995, and 4100 in 1996. For the first five months of 1997 there were an average of 7000 GA EA payments (which is slightly less than the comparable period in 1996), and about 4100 GA TRA payments.

ESTIMATED TANF PARTICIPATION RATES (Table 8, Graph 8)

In July 1997 the estimated Statewide TANF participation rate was 25.1 percent. This is more than nine percentage points higher than the estimate for May. These estimates are based on the new participation rate formulation mandated by the 1996 federal welfare reform legislation establishing Temporary Assistance to Needy Families (TANF), which went into effect with the implementation of Work First New Jersey welfare reform.

- **County rates were distributed as follows:**
 - 10.0 to 19.9 percent -- Camden, Essex**
 - 20.0 to 29.9 percent -- Bergen, Hudson, Mercer, Monmouth, Passaic, Salem, Union**
 - 30.0 to 39.9 percent -- Cumberland, Ocean**
 - 40.0 to 49.9 percent -- Burlington, Gloucester, Somerset, Warren**
 - 50 percent and over -- Atlantic, Cape May, Hunterdon, Middlesex, Morris, Sussex**

GENERAL ASSISTANCE (Table 9, Graph 9)

There were less than 30,000 GA recipients in May 1997 (the latest available data), returning to about the same level as December 1996, after four months of increase. Most of that decline was among employable GA recipients. The GA total was 4000 less than in May 1995 and May 1996.

- The number of employable GA recipients reached a peak in March 1996 of more than 23,500. There have been less than 21,000 every month since June 1996.
- The number of Unemployable GA recipients has remained between 10,000 and 12,000 over the past two years, and under 11,000 since June 1996.

CHILD SUPPORT AND PATERNITY (Table 10)

The total distribution of collections of the Child Support and Paternity Program increased from nearly \$395 million in the first nine months of FFY 1996 (October 1995 - June 1996) to nearly \$445 million in the first nine months of FFY 1997 (October 1996 - June 1997).

New Jersey Department of Human Services
Division of Family Development

Table 1

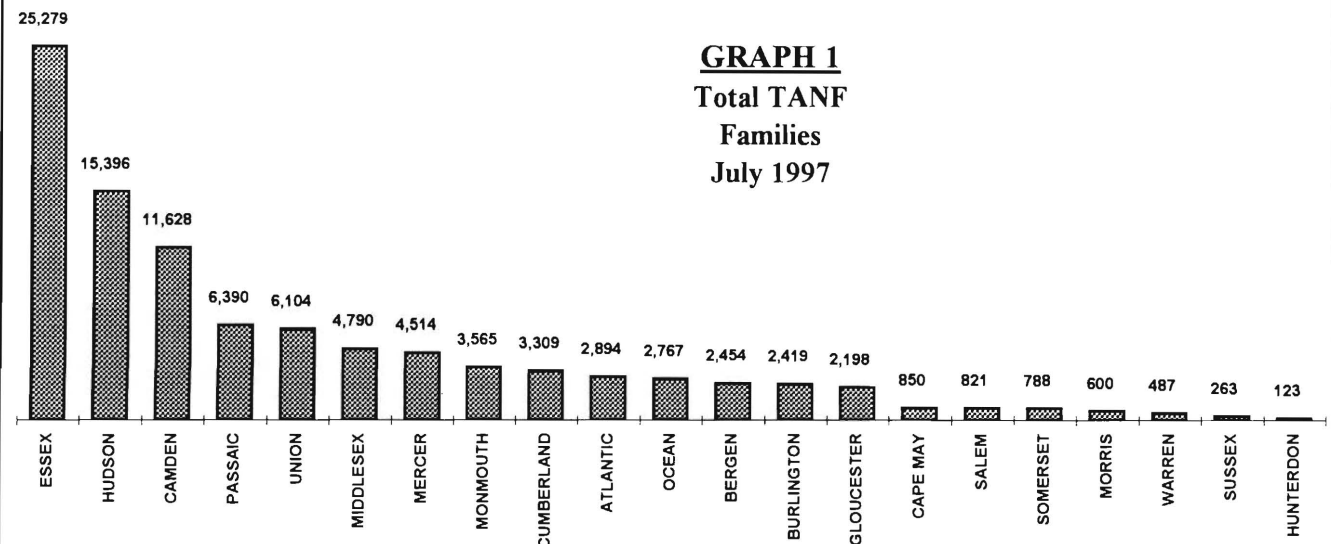
TANF Program

**NUMBER OF APPLICATIONS AND TERMINATIONS DURING REPORT MONTH, AND
NUMBER OF ELIGIBLE FAMILIES RECEIVING TANF AT END OF REPORT MONTH
July 1997**

County	Applications Approved	Terminations	Single Head Families	Two Parent Families	Medicaid Only	Total TANF
ATLANTIC	159	358	2,694	83	117	2,894
BERGEN	130	191	2,182	195	77	2,454
BURLINGTON	233	318	2,089	125	205	2,419
CAMDEN	749	876	10,221	651	756	11,628
CAPE MAY	69	175	689	84	77	850
CUMBERLAND	276	312	2,836	274	199	3,309
ESSEX	867	1,261	24,178	498	603	25,279
GLOUCESTER	206	251	1,822	133	243	2,198
HUDSON	451	824	13,885	711	800	15,396
HUNTERDON	17	24	90	7	26	123
MERCER	300	385	4,005	161	348	4,514
MIDDLESEX	346	496	4,005	377	408	4,790
MONMOUTH	219	274	3,325	174	66	3,565
MORRIS	34	67	540	26	34	600
OCEAN	187	323	2,287	247	233	2,767
PASSAIC	420	469	5,915	395	80	6,390
SALEM	86	103	740	32	49	821
SOMERSET	81	126	671	57	60	788
SUSSEX	39	42	206	11	46	263
UNION	337	428	5,512	241	351	6,104
WARREN	34	41	414	40	33	487
NJ TOTAL	5,240	7,344	88,306	4,522	4,811	97,639

Data is derived from NJ Division of Family Development's FAMIS report #FF-012

GRAPH 1
**Total TANF
Families
July 1997**



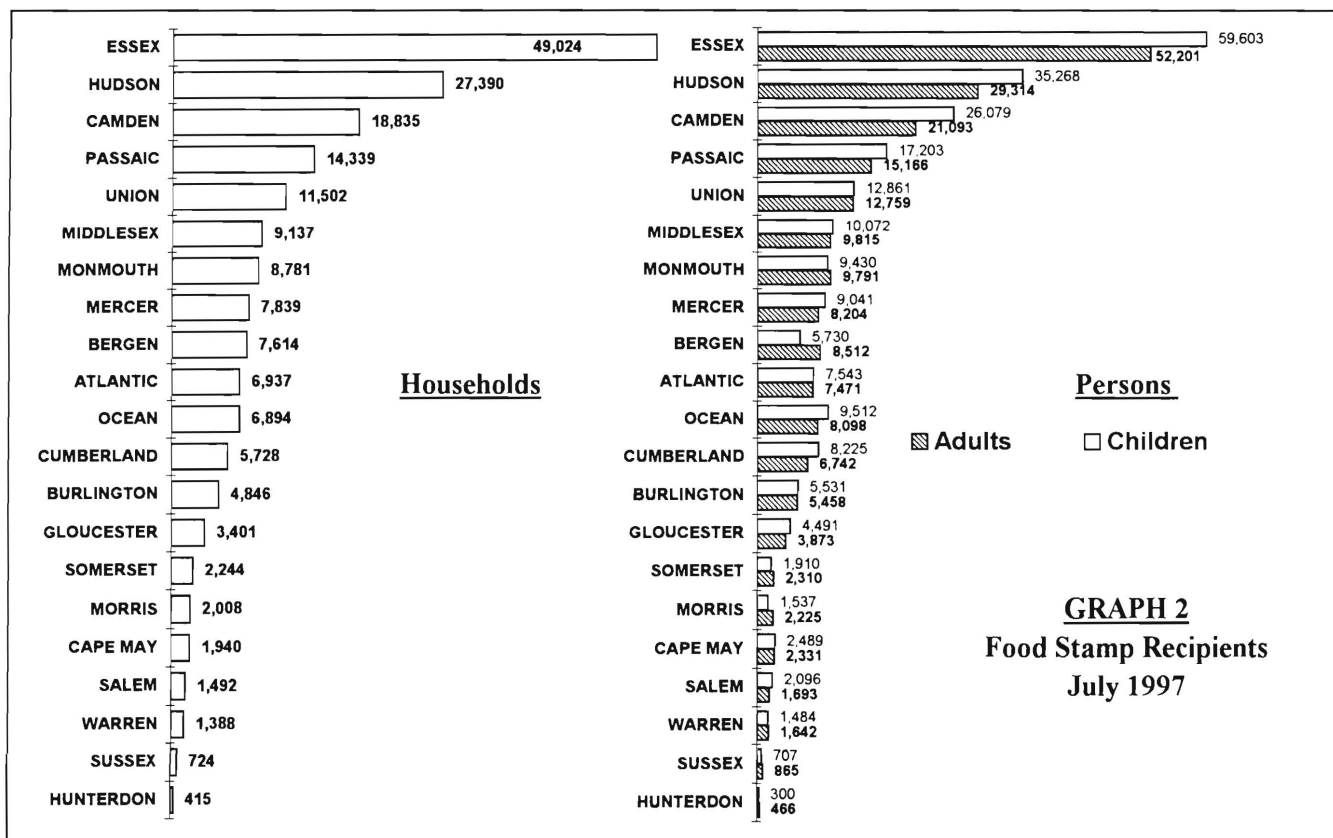
New Jersey Department of Human Services
Division of Family Development

Table 2
FOOD STAMP Program
NUMBER OF ATP'S ISSUED TO HOUSEHOLDS, PERSONS, ADULTS
AND CHILDREN AT THE END OF THE REPORT MONTH
July 1997

County	HOUSEHOLDS			PERSONS				
	TANF	Other low income	TOTAL	TOTAL	TANF	Other low income	Adults	Children
ATLANTIC	2,562	4,375	6,937	15,014	8,525	6,489	7,471	7,543
BERGEN	2,104	5,510	7,614	14,242	6,172	8,070	8,512	5,730
BURLINGTON	2,080	2,766	4,846	10,989	6,556	4,433	5,458	5,531
CAMDEN	10,602	8,233	18,835	47,172	35,086	12,086	21,093	26,079
CAPE MAY	858	1,082	1,940	4,820	2,948	1,872	2,331	2,489
CUMBERLAND	3,129	2,599	5,728	14,967	10,757	4,210	6,742	8,225
ESSEX	24,189	24,835	49,024	111,804	76,338	35,466	52,201	59,603
GLOUCESTER	1,856	1,545	3,401	8,364	5,963	2,401	3,873	4,491
HUDSON	14,365	13,025	27,390	64,582	44,241	20,341	29,314	35,268
HUNTERDON	93	322	415	766	290	476	466	300
MERCER	3,634	4,205	7,839	17,245	11,546	5,699	8,204	9,041
MIDDLESEX	4,141	4,996	9,137	19,887	12,605	7,282	9,815	10,072
MONMOUTH	3,278	5,503	8,781	19,221	10,731	8,490	9,791	9,430
MORRIS	486	1,522	2,008	3,762	1,454	2,308	2,225	1,537
OCEAN	2,787	4,107	6,894	17,610	9,482	8,128	8,098	9,512
PASSAIC	5,752	8,587	14,339	32,369	18,896	13,473	15,166	17,203
SALEM	785	707	1,492	3,789	2,607	1,182	1,693	2,096
SOMERSET	671	1,573	2,244	4,220	2,009	2,211	2,310	1,910
SUSSEX	190	534	724	1,572	584	988	865	707
UNION	5,005	6,497	11,502	25,620	16,252	9,368	12,759	12,861
WARREN	462	926	1,388	3,126	1,499	1,627	1,642	1,484
NJ TOTAL	89,029	103,449	192,478	441,141	284,541	156,600	210,029	231,112

ATP - Authorization to Participate

Data is derived from NJ Division of Family Development's FAMIS report # FB-160.



New Jersey Department of Human Services
Division of Family Development

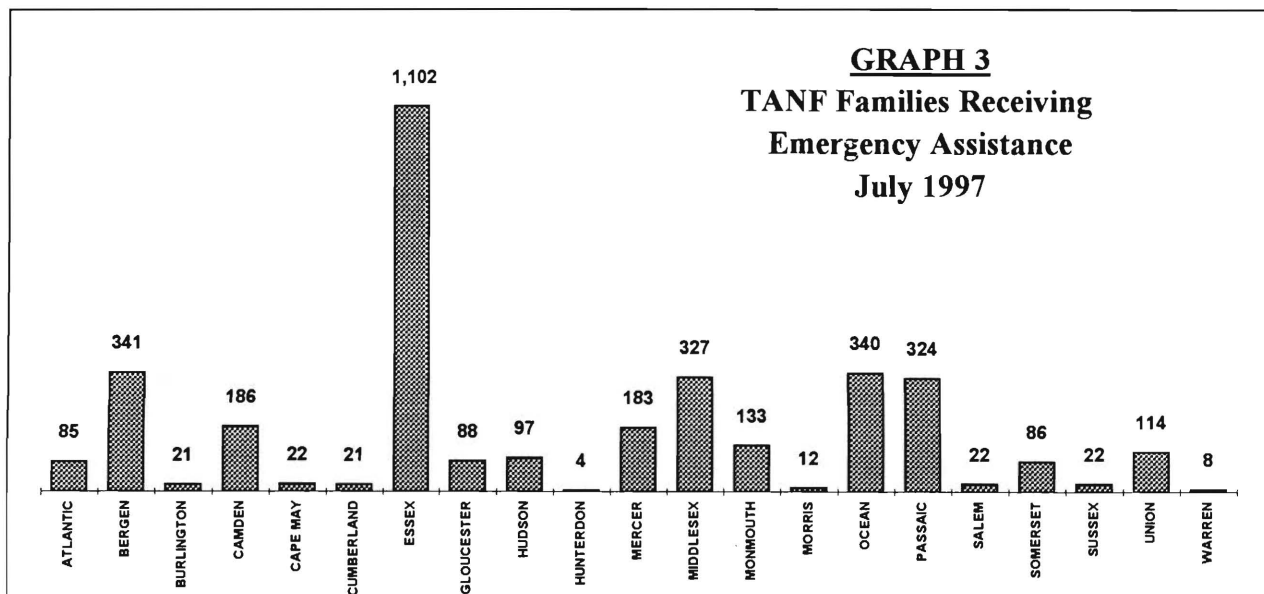
Table 3**TANF/SSI EMERGENCY ASSISTANCE**

**NUMBER OF ELIGIBLE FAMILIES RECEIVING EMERGENCY ASSISTANCE PAYMENTS
(UNDUPLICATED CASES)**

July 1997

County	TANF Families Receiving Emergency Assistance					SSI Receipts Receiving EA
	TOTAL TANF-EA	Temporary Rental Assist.	Motel Housing	Emergency Shelter	Other TANF-EA	
ATLANTIC	85	29	7	11	38	25
BERGEN	341	181	33	26	101	25
BURLINGTON	21	2	0	16	3	1
CAMDEN	186	67	5	13	101	22
CAPE MAY	22	10	5	0	7	2
CUMBERLAND	21	0	0	8	13	5
ESSEX	1,102	479	10	110	503	41
GLOUCESTER	88	36	4	31	17	4
HUDSON	97	24	2	12	59	9
HUNTERDON	4	0	0	1	3	6
MERCER	183	96	14	1	72	5
MIDDLESEX	327	125	19	16	167	36
MONMOUTH	133	93	13	2	25	1
MORRIS	12	0	1	3	8	8
OCEAN	340	131	96	3	110	69
PASSAIC	324	1	3	14	306	47
SALEM	22	9	2	0	11	0
SOMERSET	86	13	3	21	49	5
SUSSEX	22	1	10	5	6	2
UNION	114	11	5	12	86	9
WARREN	8	0	6	1	1	0
NJ TOTAL	3,538	1,308	238	306	1,686	322

Derived from NJ Division of Family Development FAMIS Reports #FM457 and #FM430-03A



New Jersey Department of Human Services
Division of Family Development

TABLE 4
WORK FIRST NEW JERSEY
STATISTICAL SUMMARY
July 1997

COUNTY	TOTAL NONEXEMPT RECIPIENTS	EMPLOYMENT DIRECTED ACTIVITIES			EMPLOYED OPEN (TANF RECIPIENT)	CHILD CARE ON ACTIVE CASE	EMPLOYED CLOSED	POST TANF CHILD CARE
		CWEP	ALL OTHER TRAINING	JOB SEARCH				
ATLANTIC	1,225	107	154	56	333	139	88	164
BERGEN	1,683	183	146	23	215	149	49	97
BURLINGTON	1,221	176	75	75	209	144	66	226
CAMDEN	7,218	354	345	151	661	472	162	307
CAPE MAY	420	79	19	19	135	10	94	20
CUMBERLAND	1,930	243	135	130	256	187	64	136
ESSEX	18,089	1,392	1,720	1,054	1,174	1561	213	319
GLOUCESTER	940	133	84	139	117	89	37	100
HUDSON	10,435	1,053	1,509	103	598	1084	214	408
HUNTERDON	43	7	10	10	27	12	8	15
MERCER	2,706	275	367	78	184	215	96	162
MIDDLESEX	2,319	406	191	268	502	175	123	246
MONMOUTH	2,340	88	457	79	266	273	66	174
MORRIS	268	203	85	17	95	69	21	50
OCEAN	1,415	55	134	91	179	123	79	178
PASSAIC	4,420	492	370	306	283	356	73	135
SALEM	503	68	31	47	62	27	13	36
SOMERSET	429	65	72	34	59	56	15	31
SUSSEX	87	27	14	34	57	28	15	47
UNION	3,898	395	389	11	230	196	105	139
WARREN	298	93	14	24	43	14	21	27
STATE	61,887	5,894	6,321	2,749	5,685	5,379	1,622	3,017

Data is derived from NJ Division of Family Development's FAMIS reports

New Jersey Department of Human Services
Division of Family Development

Table 5**TANF/AFDC Program**

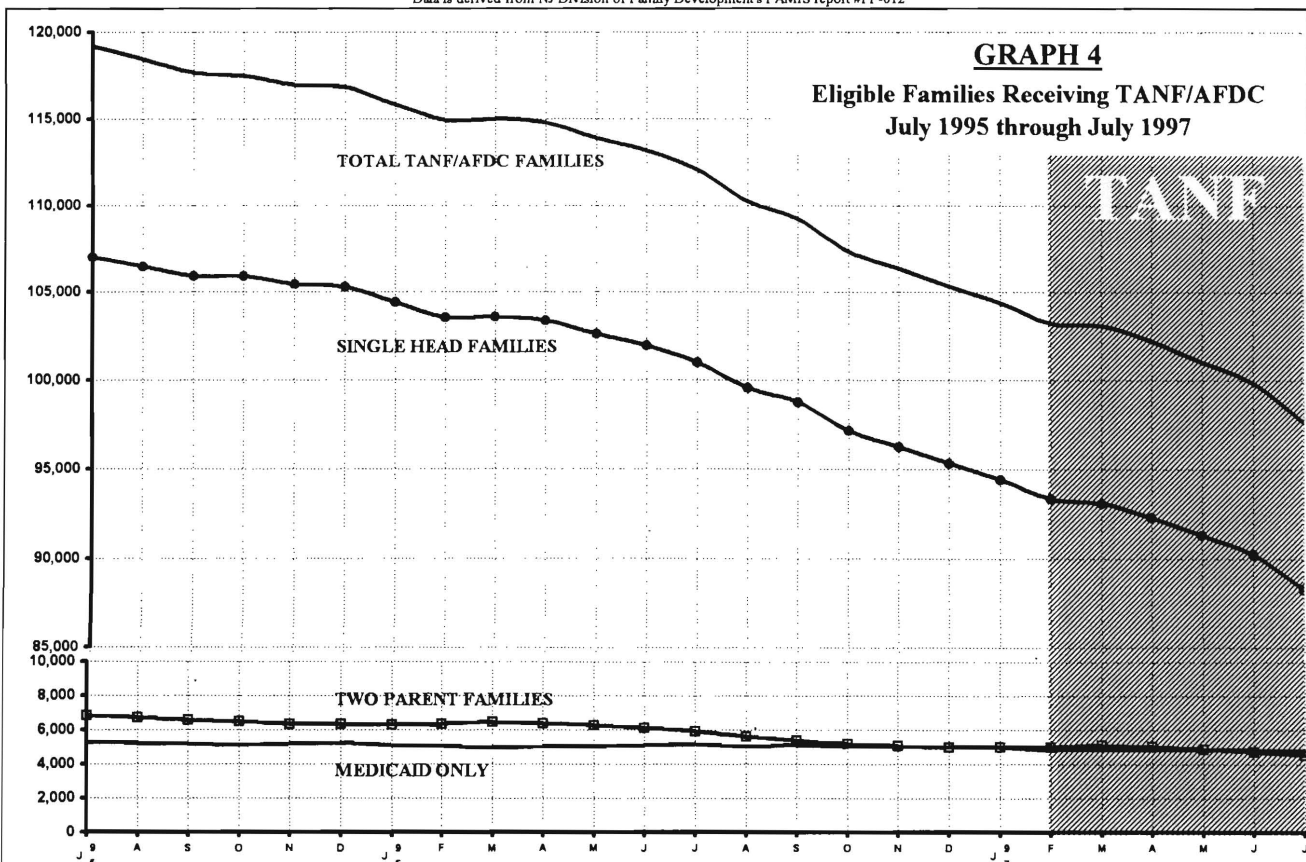
NUMBER OF APPLICATIONS AND TERMINATIONS DURING REPORT MONTH, AND
NUMBER OF ELIGIBLE FAMILIES RECEIVING TANF/AFDC AT END OF REPORT MONTH

July 1995 through July 1997

AFDC	Applications Approved	Terminations	Regular AFDC (C Segment)	Unemployed Parents(F)	State AFDC(N)	Two Parents (F+N)	Medicaid Only	Total AFDC
1995 JUL	5,977	6,781	107,028	3,574	3,286	6,860	5,293	119,181
AUG	5,547	6,294	106,475	3,489	3,260	6,749	5,239	118,463
SEP	5,922	6,647	105,943	3,303	3,260	6,563	5,175	117,681
OCT	7,062	7,359	105,917	3,224	3,257	6,481	5,110	117,508
NOV	6,083	6,660	105,445	3,164	3,199	6,363	5,189	116,997
DEC	5,582	5,775	105,287	3,165	3,189	6,354	5,258	116,899
AVERAGE (12 mos.)	5,956	6,460	107,376	3,575	3,288	6,863	5,192	119,430
1996 JAN	5,332	6,236	104,430	3,139	3,173	6,312	5,113	115,855
FEB	5,217	6,283	103,561	3,161	3,170	6,331	5,060	114,952
MAR	6,317	6,302	103,598	3,230	3,217	6,447	4,956	115,001
APR	6,896	7,241	103,352	3,192	3,211	6,403	5,040	114,795
MAY	5,335	6,152	102,600	3,112	3,163	6,275	5,038	113,913
JUN	5,319	6,121	101,947	2,999	3,117	6,116	5,116	113,179
JUL	5,874	7,027	100,968	2,843	3,073	5,916	5,200	112,084
AUG	5,014	6,789	99,567	2,638	2,993	5,631	5,053	110,251
SEP	6,311	7,440	98,744	2,462	2,933	5,395	5,097	109,236
OCT	5,213	7,015	97,152	2,368	2,822	5,190	5,026	107,368
NOV	5,374	6,549	96,238	2,329	2,752	5,081	5,034	106,353
DEC	5,018	6,137	95,322	2,308	2,708	5,016	4,992	105,330
AVERAGE	5,602	6,608	100,623	2,815	3,028	5,843	5,060	111,526
1997 JAN	5,933	6,803	94,429	2,290	2,692	4,982	4,994	104,405

TANF	Applications Approved	Terminations	Single Head Families	Two Parent Families	Medicaid Only	Total TANF
FEB	4,410	5,728	93,359	5,010	4,862	103,231
MAR	6,184	6,416	93,104	5,125	4,835	103,064
APR	5,172	6,034	92,300	5,049	4,828	102,177
MAY	4,882	6,121	91,290	4,893	4,851	101,034
JUN	4,620	5,760	90,223	4,748	4,856	99,827
JUL	5,240	7,344	88,306	4,522	4,811	97,639
AVERAGE (incl. JAN)	5,206	6,315	91,859	4,904	4,862	101,625

Data is derived from NJ Division of Family Development's FAMIS report #FF-012



New Jersey Department of Human Services

Division of Family Development

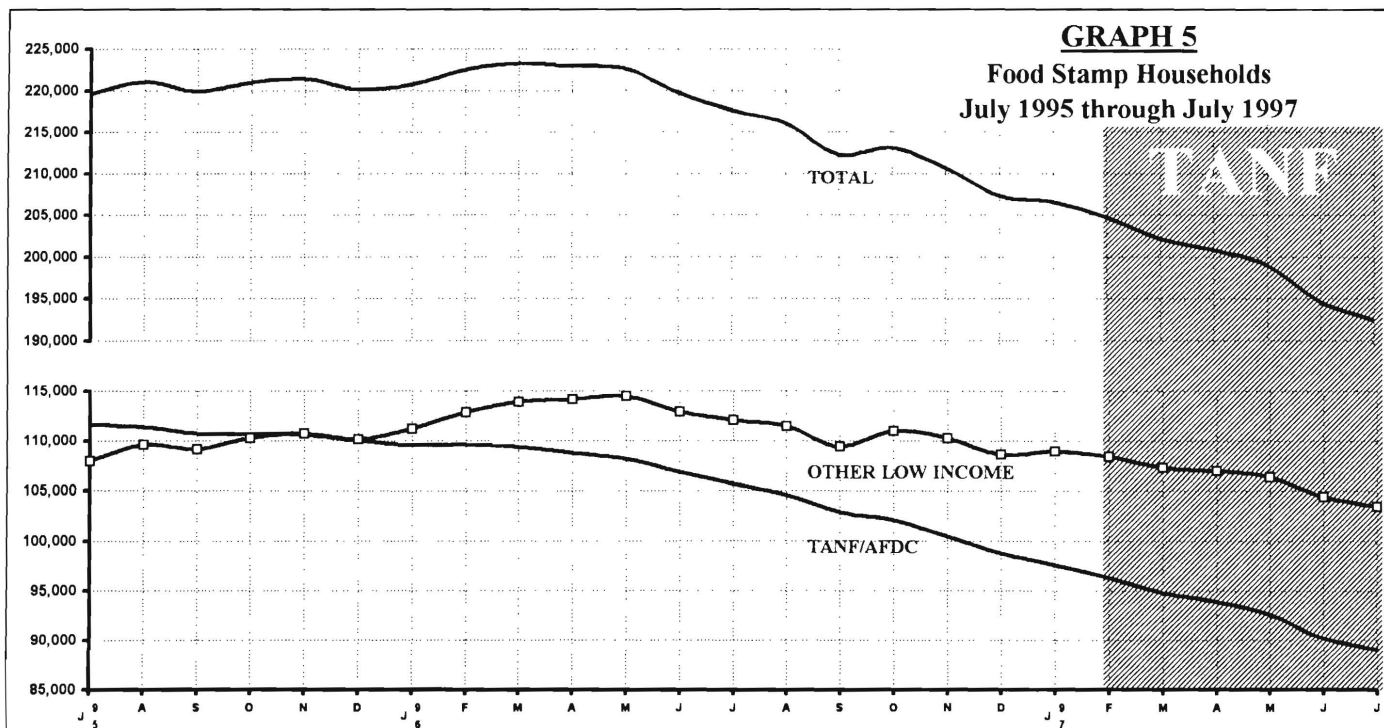
TABLE 6

FOOD STAMP Program State Summary
NUMBER OF ATP'S ISSUED TO HOUSEHOLDS, PERSONS
ADULTS AND CHILDREN AT THE END OF THE REPORT MONTH
July 1995 through July 1997

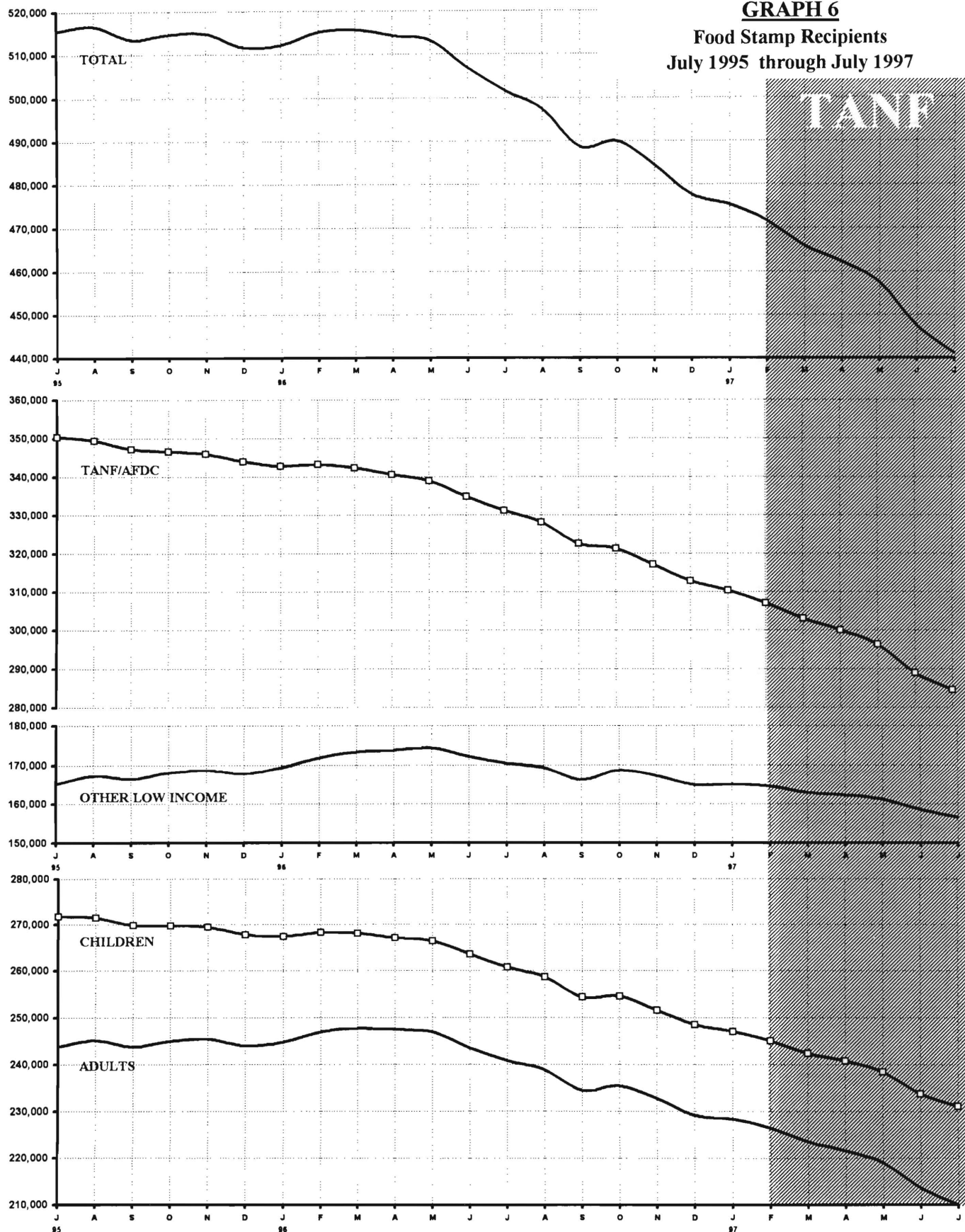
<u>HOUSEHOLDS</u>				<u>PERSONS</u>					
		Other low				Other low			
		income	TOTAL	TOTAL	TANF/AFDC	income	Adults	Children	
AFDC 1995	JUL	111,635	107,978	219,613	515,478	350,378	165,100	243,727	271,751
	AUG	111,415	109,603	221,018	516,618	349,372	167,246	245,110	271,508
	SEP	110,760	109,154	219,914	513,517	347,126	166,391	243,723	269,794
	OCT	110,697	110,268	220,965	514,598	346,519	168,079	244,911	269,687
	NOV	110,630	110,763	221,393	514,823	346,034	168,789	245,455	269,368
	DEC	109,992	110,155	220,147	511,727	343,955	167,772	243,965	267,762
	AVERAGE (12 mos.)	112,211	109,290	221,500	519,170	351,916	167,254	245,892	273,279
1996	JAN	109,554	111,166	220,720	512,165	342,778	169,387	244,801	267,364
	FEB	109,649	112,813	222,462	515,181	343,314	171,867	246,961	268,220
	MAR	109,364	113,895	223,259	515,676	342,361	173,315	247,695	267,981
	APR	108,787	114,163	222,950	514,375	340,597	173,778	247,380	266,995
	MAY	108,205	114,458	222,663	513,213	338,891	174,322	246,918	266,295
	JUN	106,875	112,888	219,763	506,926	334,762	172,164	243,422	263,504
	JUL	105,653	112,023	217,676	501,575	331,157	170,418	240,840	260,735
	AUG	104,568	111,473	216,041	497,436	328,055	169,381	238,804	258,632
	SEP	102,827	109,441	212,268	488,765	322,572	166,193	234,442	254,323
	OCT	102,088	111,008	213,096	489,991	321,226	168,765	235,401	254,590
	NOV	100,411	110,254	210,665	484,378	317,163	167,215	232,756	251,622
	DEC	98,729	108,617	207,346	477,693	312,869	164,824	229,191	248,502
	AVERAGE	105,559	111,850	217,409	501,448	331,312	170,136	240,718	260,730
1997	JAN	97,555	108,961	206,516	475,374	310,342	165,032	228,388	246,986
TANF	FEB	96,279	108,462	204,741	471,576	307,066	164,510	226,570	245,006
	MAR	94,787	107,331	202,118	465,920	303,052	162,868	223,576	242,344
	APR	93,845	107,008	200,853	462,303	300,073	162,230	221,538	240,765
	MAY	92,593	106,369	198,962	457,430	296,327	161,103	219,003	238,427
	JUN	90,218	104,441	194,659	447,417	288,957	158,460	213,692	233,725
	JUL	89,029	103,449	192,478	441,141	284,541	156,600	210,029	231,112
	AVERAGE	93,472	106,574	200,047	460,166	298,623	161,543	220,399	239,766

ATP - Authorization to Participate

Data is derived from NJ Division of Family Development's FAMIS report # FB-160.



GRAPH 6
Food Stamp Recipients
July 1995 through July 1997



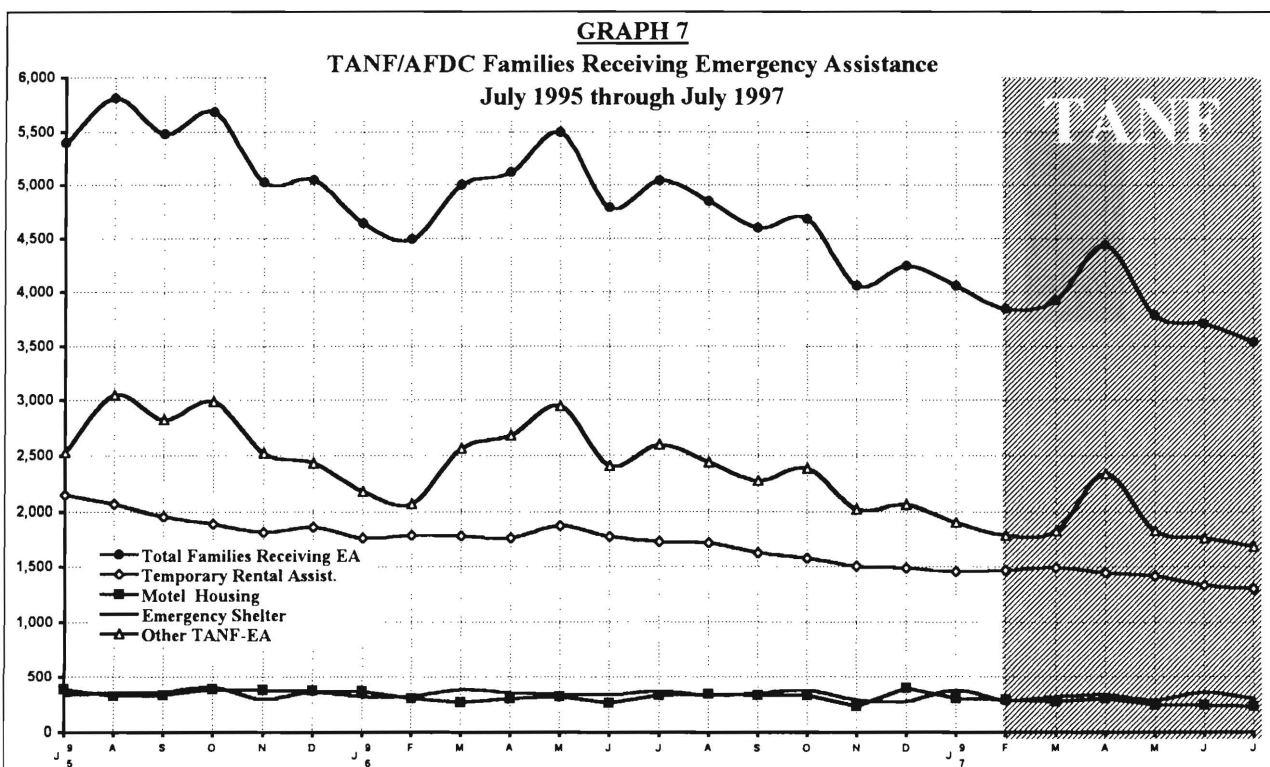
New Jersey Department of Human Services
Division of Family Development

TABLE 7

EMERGENCY ASSISTANCE Program for TANF/AFDC Recipients, State Summary
NUMBER OF ELIGIBLE FAMILIES RECEIVING EMERGENCY ASSISTANCE PAYMENTS
(UNDUPLICATED CASES)
June 1995 through June 1997

	Total Families Receiving EA	Temporary Rental Assistance	Motel Housing	Emergency Shelter	Other TANF/AFDC-EA
AFDC 1995 JUL	5,402	2,149	389	334	2,530
AUG	5,813	2,068	331	362	3,052
SEP	5,482	1,958	336	364	2,824
OCT	5,678	1,891	388	410	2,989
NOV	5,024	1,816	384	302	2,522
DEC	5,048	1,864	377	369	2,438
AVERAGE (12 mos.)	5,755	2,201	405	369	2,779
1996 JAN	4,639	1,761	374	325	2,179
FEB	4,490	1,788	305	330	2,067
MAR	5,001	1,779	270	388	2,564
APR	5,118	1,760	309	364	2,685
MAY	5,498	1,873	323	350	2,952
JUN	4,791	1,772	266	341	2,412
JUL	5,044	1,729	335	377	2,603
AUG	4,845	1,716	346	339	2,444
SEP	4,600	1,625	337	362	2,276
OCT	4,683	1,576	334	385	2,388
NOV	4,059	1,507	237	294	2,021
DEC	4,244	1,492	400	286	2,066
AVERAGE	4,751	1,698	320	345	2,388
1997 JAN	4,059	1,462	310	382	1,905
TANF FEB	3,847	1,473	296	292	1,786
MAR	3,926	1,494	278	327	1,827
APR	4,440	1,447	309	342	2,342
MAY	3,788	1,416	250	298	1,824
JUN	3,711	1,336	251	365	1,759
JUL	3,538	1,308	238	306	1,686
AVERAGE	3,901	1,419	276	330	1,876

Data derived from NJ Division of Family Development FAMIS Report #FM457 and #FM430-03a.



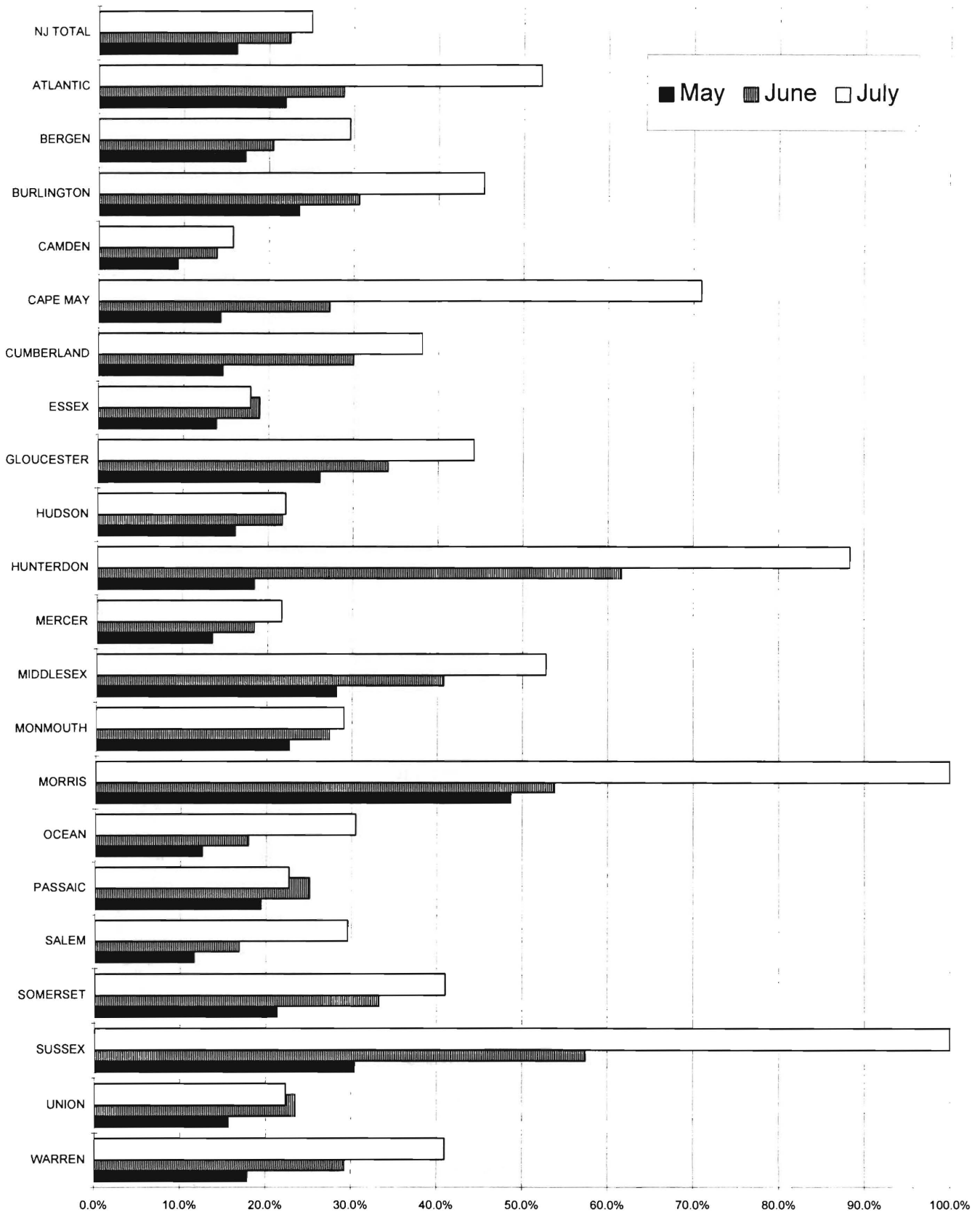
New Jersey Department of Human Services
Division of Family Development

Table 8
ESTIMATED TANF PARTICIPATION RATES
May 1997 - July 1997

County	ESTIMATED TANF PARTICIPATION RATE		
	May	June	July
ATLANTIC	21.9%	28.8%	52.1%
BERGEN	17.3%	20.5%	29.6%
BURLINGTON	23.6%	30.7%	45.4%
CAMDEN	9.3%	13.9%	15.8%
CAPE MAY	14.4%	27.2%	71.0%
CUMBERLAND	14.6%	30.0%	38.1%
ESSEX	13.9%	19.0%	17.9%
GLOUCESTER	26.1%	34.1%	44.3%
HUDSON	16.2%	21.7%	22.1%
HUNTERDON	18.4%	61.7%	88.4%
MERCER	13.6%	18.4%	21.7%
MIDDLESEX	28.2%	40.7%	52.8%
MONMOUTH	22.7%	27.4%	29.1%
MORRIS	48.7%	53.8%	100.0%
OCEAN	12.6%	17.9%	30.5%
PASSAIC	19.4%	25.1%	22.7%
SALEM	11.7%	16.9%	29.6%
SOMERSET	21.3%	33.3%	41.0%
SUSSEX	30.5%	57.5%	100.0%
UNION	15.7%	23.5%	22.3%
WARREN	17.9%	29.3%	40.9%
NJ TOTAL	16.3%	22.5%	25.1%

The new Work First New Jersey participation rate formulation mandated by PRWORA, 1996 federal welfare reform legislation establishing Temporary Assistance to Needy Families (TANF)

Graph 8
ESTIMATED TANF PARTICIPATION RATES
May 1997 - July 1997



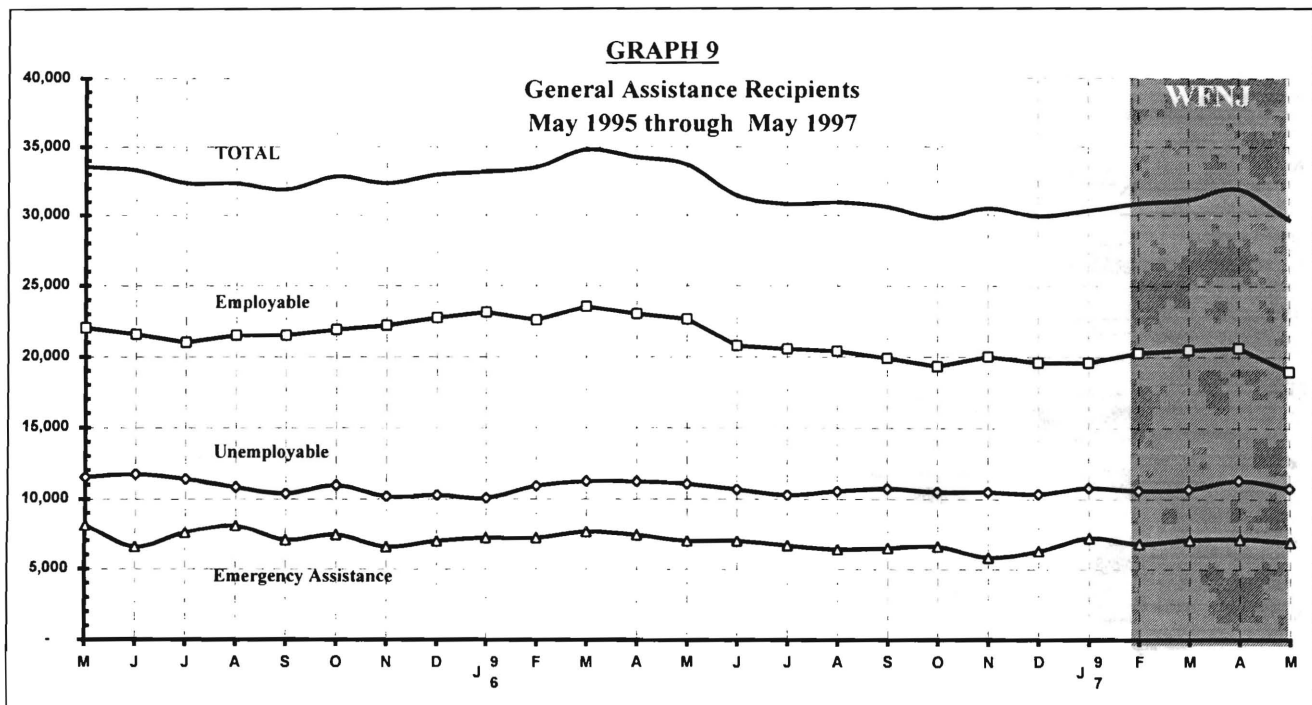
New Jersey Department of Human Services
Division of Family Development

TABLE 9

GENERAL ASSISTANCE Program, State Summary
NUMBER OF EMPLOYABLE AND UNEMPLOYABLE RECIPIENTS
AND EMERGENCY ASSISTANCE PAYMENTS DURING REPORT MONTH
May 1995 through May 1997

	<u>All Persons Aided</u>			<u>Emergency Assistance Payments</u>		
	Employable	Unemployable	Total	Temporary Rental Assistance	Other GA-EA	Total
1995 MAY	22,046	11,527	33,573	4,995	3,135	8,130
JUN	21,575	11,738	33,313	4,423	2,146	6,569
JUL	21,000	11,391	32,391	4,048	3,526	7,574
AUG	21,526	10,829	32,355	4,174	3,909	8,083
SEP	21,525	10,389	31,914	4,110	2,945	7,055
OCT	21,913	10,959	32,872	3,939	3,497	7,436
NOV	22,206	10,171	32,377	4,141	2,422	6,563
DEC	22,732	10,268	33,000	4,086	2,902	6,988
AVERAGE (12 mos.)	21,815	11,178	33,611	4,420	2,947	7,368
1996 JAN	23,140	10,054	33,194	4,421	2,803	7,224
FEB	22,584	10,927	33,511	4,567	2,651	7,218
MAR	23,528	11,243	34,771	4,472	3,185	7,657
APR	23,028	11,221	34,249	4,490	2,944	7,434
MAY	22,657	11,054	33,711	4,064	2,947	7,011
JUN	20,785	10,667	31,452	4,283	2,716	6,999
JUL	20,546	10,282	30,828	3,754	2,922	6,676
AUG	20,416	10,552	30,968	3,958	2,448	6,406
SEP	19,895	10,741	30,636	3,905	2,597	6,502
OCT	19,310	10,514	29,824	3,894	2,728	6,622
NOV	20,019	10,508	30,527	3,662	2,166	5,828
DEC	19,582	10,369	29,951	3,725	2,574	6,299
AVERAGE	21,291	10,678	31,969	4,100	2,723	6,823
1997 JAN	19,562	10,809	30,371	4,182	3,029	7,211
WFNJ FEB	20,274	10,607	30,881	3,994	2,807	6,801
MAR	20,467	10,678	31,145	4,167	2,907	7,074
APR	20,612	11,305	31,917	4,184	2,930	7,114
MAY	18,938	10,758	29,696	4,137	2,789	6,926
AVERAGE	19,971	10,831	30,802	4,133	2,892	7,025

Data Sources: NJ Division of Family Development, GA Fiscal Unit



New Jersey Department of Human Services
Division of Family Development

TABLE 10
CHILD SUPPORT AND PATERNITY COLLECTIONS
State Summary

COLLECTION SOURCE	Comparison of FFY 1996 and FFY 1997		
	10/95-6/96	10/96-6/97	% change
AFDC & FOSTER CARE			
Federal Tax	\$17,847,912	\$18,992,137	6.4%
State Tax	1,130,512	1,113,887	-1.5%
Unempl. Ins. Ben.	4,094,622	4,167,256	1.8%
Income Withholding	31,131,463	30,830,260	-1.0%
Other/Own Behalf	11,298,413	14,238,422	26.0%
From Other States	2,519,417	3,192,076	26.7%
For Other States	5,663,118	6,484,438	14.5%
TOTAL COLLECTION	\$73,685,457	\$79,018,476	7.2%
TOTAL DISTRIBUTION	\$74,508,010	\$76,849,532	3.1%
NON- AFDC			
Federal Tax	\$8,534,024	\$8,533,287	0.0%
State Tax	1,397,851	1,582,807	13.2%
Unempl. Ins. Ben.	14,402,749	13,331,787	-7.4%
Income Withholding	186,275,192	208,719,286	12.0%
Other/Own Behalf	93,132,352	101,154,836	8.6%
From Other States	15,406,629	18,846,181	22.3%
For Other States	21,130,050	22,679,339	7.3%
TOTAL COLLECTION	\$340,278,847	\$374,847,523	10.2%
TOTAL DISTRIBUTION	\$320,312,347	\$367,805,594	14.8%
TOTAL			
Federal Tax	\$26,381,936	\$27,525,424	4.3%
State Tax	\$2,528,363	\$2,696,694	6.7%
Unempl. Ins. Ben.	\$18,497,371	\$17,499,043	-5.4%
Income Withholding	\$217,406,655	\$239,549,546	10.2%
Other/Own Behalf	\$104,430,765	\$115,393,258	10.5%
From Other States	\$17,926,046	\$22,038,257	22.9%
For Other States	\$26,793,168	\$29,163,777	8.8%
TOTAL COLLECTION	\$413,964,304	\$453,865,999	9.6%
TOTAL DISTRIBUTION	\$394,820,357	\$444,655,126	12.6%

Distributed amount represents collections reported and recognized by the Federal Office of
Child Support Enforcement for calculating incentives and annual report to Congress
Source: DFD Office of Child Support and Paternity Programs

Explanatory Notes

The Department of Human Services Division of Family Development provides basic income and an opportunity to achieve self-sufficiency for individuals and families served by the Division's programs. The Division provides leadership, direction and supervision to those public agencies responsible for administering those programs and plans for and develops policies to promote self-sufficiency.

WORK FIRST NEW JERSEY (WFNJ) - Fully implemented July 1, 1997, this is New Jersey's welfare reform program which responds to the requirements of the Federal Personal Responsibility and Work Opportunity Reconciliation Act (PRWORA) of 1996. PRWORA establishes Temporary Assistance to Needy Families (TANF) as the replacement for AFDC. WFNJ includes two segments, WFNJ/TANF for families with children, and WFNJ/GA (General Assistance) for single adults and couples without dependent children. The emphasis is on achieving self-sufficiency and limits lifetime receipt of financial assistance to a total of five years.

WFNJ Statistical Summary (Table 4)

Total Non-Exempt Recipients - Calculation of the number of mandatory individuals (FAMIS report # FB304).

Employment Directed Activities (EDA) - From Activities Summary Report (OMEGA report # RM064). Unduplicated count of persons participating in Community Work Experience Program (CWEP), All Other Training, or Job Search.

Number of Persons Employed This Month, Still Receiving TANF - From Activities Summary Report (OMEGA report # RM064).

Participants Receiving Child Care Services - From Issuance Disbursement Summary (OMEGA report # RM703). Total number of active participants who show receipt of **Child Care**.

Number of Persons Closed on FAMIS Due to Employment- From FAMIS report # FM463.

Post TANF and Receiving Child Care - Persons no longer in receipt of TANF but still receiving child care. From Issuance Disbursement Summary (OMEGA report # RM703).

AID TO FAMILIES WITH DEPENDENT CHILDREN (AFDC) - Replaced by WFNJ/TANF July 1, 1997, AFDC provided financial assistance for dependent children and their natural or adoptive parents, or certain other relatives recognized as taking the place of a parent.

Regular AFDC (C Segment) - assistance when only one parent is in the home due to death or absence, or both parents are in the home but at least one is incapacitated.

Unemployed Parents (F Segment) - assistance when both parents are in the home, neither is incapacitated and the primary wage earner meets the federally defined criteria for unemployment.

State AFDC (N Segment) - assistance when both parents are in the home, neither is incapacitated, and the primary wage earner does not meet the federal definition of unemployment.

Medicaid Only - families no longer receiving AFDC financial assistance but remaining eligible for Medicaid under applicable provisions which extend coverage beyond period of AFDC assistance.

FOOD STAMP PROGRAM (FS) - Authorized by Congress as a nutritional supplement program to provide low income households with more food of greater variety and better nutrition. Program eligibility is based on household income, resources, and expenses for medical, shelter, and dependent care. CWA staff refer certain recipients to the New Jersey Department of Labor for participation in the Food Stamp Employment and Training Program.

EMERGENCY ASSISTANCE (EA) - Payments to those eligible for WFNJ/TANF or WFNJ/GA, authorized during the 30 consecutive days immediately following the emergency (defined as a substantial loss of shelter, food, clothing, or household furnishings by fire, flood or other similar disaster) or if the eligible individual or family is in an imminent or actual state of homelessness.

New Jersey Department of Human Services
Division of Family Development

TABLE 11**WFNJ/GENERAL ASSISTANCE Program**

**EMPLOYABLE AND UNEMPLOYABLE RECIPIENTS AND EMERGENCY ASSISTANCE RECIPIENTS
COUNTIES AND 21 LARGEST MUNICIPALITIES**

May 1997

<u>County/ Municipality</u>	<u>Total Persons Aided</u>			<u>Emergency Assistance Payments</u>		
	Employable	Unemployable	Total	Temporary Rental Assist.	Other GA-EA	Total
ATLANTIC	958	531	1,489	67	25	92
BERGEN	439	460	899	239	76	315
BURLINGTON	336	402	738	125	100	225
CAMDEN	2,196	1,022	3,218	204	189	393
CAPE MAY	117	121	238	22	24	46
CUMBERLAND	336	173	509	6	25	31
ESSEX	6,203	2,337	8,540	1,050	1,354	2,404
GLOUCESTER	110	122	232	13	15	28
HUDSON	861	1,187	2,048	145	25	170
HUNTERDON	36	65	101	30	19	49
MERCER	1,382	825	2,207	274	323	597
MIDDLESEX	431	536	967	76	41	117
MONMOUTH	587	646	1,233	276	64	340
MORRIS	99	175	274	35	21	56
OCEAN	516	391	907	318	178	496
PASSAIC	2,219	664	2,883	452	174	626
SALEM	126	51	177	22	20	42
SOMERSET	73	78	151	21	9	30
SUSSEX	33	37	70	29	2	31
UNION	1,843	865	2,708	703	100	803
WARREN	37	70	107	30	5	35
TOTAL NJ	18,938	10,758	29,696	4,137	2,789	6,926

Atlantic City	812	307	1,119	51	19	70
Mount Holly	99	81	180	36	61	97
Camden	1,977	670	2,647	140	143	283
Vineland	166	95	261	3	17	20
East Orange	474	358	832	197	17	214
Irvington	351	136	487	58	3	61
Montclair	117	68	185	31	8	39
Newark	4,789	1,547	6,336	668	1,317	1,985
Orange	351	62	413	65	0	65
Bayonne	120	59	179	6	0	6
Hoboken	112	124	236	17	2	19
Jersey City	496	540	1,036	81	19	100
Trenton	1,291	713	2,004	241	311	552
Perth Amboy	97	114	211	11	4	15
Asbury Park	163	94	257	85	0	85
Long Branch	150	110	260	54	0	54
Lakewood	288	123	411	177	58	235
Passaic	424	214	638	168	49	217
Paterson	1,701	325	2,026	239	106	345
Elizabeth	1,181	421	1,602	548	57	605
Plainfield	306	161	467	40	3	43
Total	15,465	6,322	21,787	2,916	2,194	5,110

Source: NJ Division of Family Development, GA Fiscal Unit