



USDA,  
National Agricultural Statistics Service,  
New Jersey Field Office  
P.O. Box 330  
Trenton, NJ 08625  
Phone: 1(800)328-0179  
Fax: 1(800)625-7581  
www.nass.usda.gov/nj/

# New Jersey's FARM FACTS

## "Fact Finders for Agriculture"

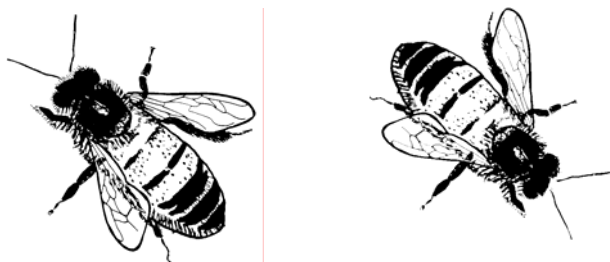
Volume: 06 Number: 03

March 20, 2006

### New Jersey Honey Production

New Jersey honey production in 2005 from producers with five or more colonies totaled 384,000 pounds, up 19 percent from 2004. The number of colonies, at 12,000, was unchanged from 2004. Honey stocks on December 15, 2005, amounted to 104,000 pounds, up 59,000 pounds from 2004.

The average price received for honey sold during 2005 was 118 cents, down 16 percent from 2004. The value of the 2005 honey crop was \$453,000, down 1 percent from the previous year.



### United States Honey Production

Honey production in 2005 from producers with five or more colonies totaled 175 million pounds, down 5 percent from 2004. There were 2.41 million colonies producing honey in 2005, down 6 percent from 2004. Yield per colony averaged 72.5 pounds, up 1 percent from the 71.8 pounds in 2004. Colonies which produced honey in more than one state were counted in each state where the honey was produced, therefore yields per colony may be understated. Colonies were not included if honey was not harvested. Producer honey stocks were 62.4 million pounds on December 15, 2005, up 2 percent from a year earlier. Stocks held by producers exclude stocks held under the commodity loan program.

Honey prices decreased during 2005 to 90.4 cents, down 15 percent from 106.9 cents in 2004. Prices are based on retail sales by producers and sales to private processors and cooperatives. State level honey prices reflect the portions of honey sold through retail, co-op and private channels. Honey prices for each color class are derived by weighing quantities sold for each marketing channel. Honey prices for 2005 were lower than the previous year for all color classes.

Honey: Number of Colonies, Yield, and Production, by Selected States and United States, 2004 and 2005 1/

Selected States	Number of Colonies		Yield Per Colony		Production	
	2004	2005	2004	2005	2004	2005
	<i>1,000 Colonies</i>		<i>Pounds</i>		<i>1,000 pounds</i>	
New Jersey	12	12	27	32	324	384
New York	64	60	67	73	4,288	4,380
Pennsylvania	30	28	54	56	1,620	1,568
<b>United States</b>	<b>2,556</b>	<b>2,410</b>	<b>71.8</b>	<b>72.5</b>	<b>183,582</b>	<b>174,643</b>

Honey: Stocks, Price, and Value by Selected States and United States, 2004 and 2004 1/

Selected States	Stocks, December 15 2/		Average Price Per Pound 3/		Value of Production	
	2004	2005	2004	2005	2004	2005
	<i>1,000 Pounds</i>		<i>Cents</i>		<i>1,000 dollars</i>	
New Jersey	45	104	141	118	457	453
New York	1,887	2,321	138	122	5,917	5,344
Pennsylvania	810	800	142	105	2,300	1,646
<b>United States</b>	<b>61,222</b>	<b>62,406</b>	<b>106.9</b>	<b>90.4</b>	<b>196,259</b>	<b>157,795</b>

1/ For producers with 5 or more colonies. Colonies which produced honey in more than one state were counted in each state.

2/ Stocks held by producers.

3/ Prices weighted by sales.

## 2005 New Jersey Acreage, Production, Price, and Value

You Are Viewing an Archived Copy from the New Jersey State Library

**Barley:** Barley planted and harvested acreage unchanged from 2004 at 3,000 and 2,000, respectively. Yield was 71 bushels per acre, an increase of 8 bushels above last year's. Production in 2005 increased by 13 percent to 142,000 bushels. The prices received by growers decreased by 10 cents from \$2.10 per bushel in 2004 to \$2.00 per bushel in 2005. The value of barley produced increased by 7 percent from \$265,000 in 2004 to \$284,000 in 2005.

**Corn:** Corn planted in 2005 totaled 80,000 acres, 62,000 of which were harvested for grain. Yield decreased 21 bushels to 122 bushels per acre from the previous year's yield of 143 bushels per acre. Production totaled 7.56 million bushels, down 27 percent from 2004. Growers received \$2.00 per bushel for their grain, a decrease of 20 cents from 2004's price of \$2.20 per bushel. The total crop value for corn for grain decreased 33 percent from \$22.7 million in 2004 to \$15.1 million in 2005.

**Hay:** All hay harvested acres was down by 5,000 acres in 2005. Alfalfa hay acres decreased by 5,000 to 25,000; while other hay acres remained unchanged, at 90,000 acres, from the previous year. Yield per acre of alfalfa hay decreased by 1.00 ton to 2.70 tons per acre, and the yield per acre of other hay decreased by .30 ton to 1.60 tons per acre. The overall hay yield was 1.84 tons per acre. Alfalfa production was 68,000 tons and other hay production was 144,000 tons; the resulting total hay production was 212,000 tons. The season average price for all hay decreased \$1.00 per ton from \$122.00 per ton in 2004 to \$121.00 per ton in 2005. Overall, total hay crop value decreased by 26 percent in 2005 to \$25.6 million.

**Potatoes:** Potatoes planted acreage decreased by 200 acres from 2004 to 2,100 acres in 2005. All planted acreage was harvested. Yield was 255 hundredweight per acre, a

decrease of 15 hundredweight from 2004. Production was 536,000 hundredweight in 2005 compared with 594,000 hundredweight in 2004. The price per hundredweight in 2005 was \$7.15 compared with \$5.50 in 2004. Total crop value increased by 17 percent from \$3.27 million in 2004 to \$3.83 million in 2005 as the results of the higher price.

**Soybeans:** Soybean planted acreage decreased by 10,000 acres to 95,000; while harvested acreage was down by 12,000 acres from 2004. Soybean yield was down 14 bushels from 2004's yield of 42 bushels per acre to 28 bushels per acre in 2005. Production decreased to 2.55 million bushels in 2005 from 4.33 million bushels in 2004. The prices received by growers increased by 20 cents from \$5.45 per bushel in 2004 to \$5.65 per bushel in 2005. The total crop value decreased by 39 percent to \$14.4 million.

**Sweet Potatoes:** Sweet potato planted and harvested acreage, at 1,200 acres, was the same as in 2004. Yield was 130 hundredweight per acre, a decrease of 10 hundredweight compared with last year's. Production was 156,000 hundredweight, a 7 percent decrease from 2004. The season average price was \$23.70 per hundredweight compared with \$26.30 in 2004. Value of production was \$3.70 million, \$721,000 less than a year ago.

**Wheat:** The 28,000 acres planted to winter wheat in 2005 were unchanged from 2004. Harvested acreage was set at 23,000, a decrease of 1,000 acres below 2004's harvested acres. Yield at 53 bushels per acre was 6 bushels more than the previous year's. Production at 1.22 million bushels was up 8 percent from 2004. The season average price of \$3.15 per bushel was 15 cents less than the price in 2004. The total crop value increased by 3 percent to \$3.84 million.

### Field Crops: 2005 New Jersey Acreage, Yield, Production, Price, and Value of Production

Crop	Unit	Acres		Yield per Acre	Production	Season Average Price	Value of Production
		Planted	Harvested				
		1,000	1,000	Units	1,000 Units	Dollars Per Unit	\$1,000
Barley	bu	3	2	71	142	2.00	284
Corn for grain 1/	bu	80	62	122	7,564	2.00	15,128
Hay, All	ton		115	1.84	212	121.00	25,648
Alfalfa Hay	ton		25	2.70	68	140.00	9,520
Other Hay	ton		90	1.60	144	112.00	16,128
Potatoes	cwt	2.1	2.1	255	536	7.15	3,832
Soybeans	bu	95	91	28	2,548	5.65	14,396
Sweet Potatoes	cwt	1.2	1.2	130	156	23.70	3,697
Winter Wheat	bu	28	23	53	1,219	3.15	3,840

1/ Planted acres for corn includes acres planted for all purposes

### Crop Values: Summary for Selected States and United States, 2005

State	Field and Misc Crops	Fruit and Nuts	Commercial Vegetables	Total Value of Principal Crops
	\$1,000	\$1,000	\$1,000	\$1,000
Delaware	99,292	---	33,408	132,700
Maryland	315,493	10,015	38,235	363,743
<b>New Jersey</b>	<b>66,825</b>	<b>111,954</b>	<b>102,731</b>	<b>281,510</b>
Pennsylvania	1,309,490	105,061	88,898	1,503,449
<b>United States</b>	<b>76,784,412</b>	<b>16,027,929</b>	<b>11,086,505</b>	<b>103,898,846</b>

2004-2005 Wheat County Estimates, New Jersey You Are Viewing an Archived Copy from the New Jersey State Library

County	Acres Planted For All Purposes		Acres Harvested		Yield Per Acre (Bushels)		Production (Bushels)	
	2004	2005	2004	2005	2004	2005	2004	2005
<b>District 20 (North)</b>								
Hunterdon	2,900	2,800	2,500	2,400	45.0	51.0	112,500	122,400
Somerset	1,900	1,800	1,700	1,600	47.0	49.0	79,900	78,400
Warren	1,500	1,300	1,300	1,100	46.0	51.0	59,800	56,100
<b>District 50 (Central)</b>								
Burlington	3,400	2,900	2,900	2,500	49.0	54.0	142,100	135,000
Middlesex	1/	1/	1/	1/	1/	1/	1/	1/
Monmouth	1,200	1,000	1,000	800	48.0	53.0	48,000	42,400
<b>District 80 (South)</b>								
Cumberland	5,700	5,900	4,800	4,800	49.0	50.0	235,200	240,000
Gloucester	3,300	3,500	2,800	2,800	47.0	59.0	131,600	165,200
Salem	7,000	7,200	6,200	5,900	46.0	55.0	285,200	324,500
Other Counties 2/	1,100	1,600	800	1,100	42.1	50.0	33,700	55,000
<b>State</b>	<b>28,000</b>	<b>28,000</b>	<b>24,000</b>	<b>23,000</b>	<b>47.0</b>	<b>53.0</b>	<b>1,128,000</b>	<b>1,219,000</b>

1/ Included in other counties.

2/ Other counties could have come from any of the districts.

2004-2005 Barley County Estimates, New Jersey

County	Acres Planted For All Purposes		Acres Harvested		Yield Per Acre (Bushels)		Production (Bushels)	
	2004	2005	2004	2005	2004	2005	2004	2005
<b>District 80 (South)</b>								
Gloucester	800	1,000	600	700	61.0	74.0	36,600	51,800
Salem	1,200	1,200	800	900	65.0	70.0	52,000	63,000
Other Counties 2/	1,000	800	600	400	62.3	68.0	37,400	27,200
<b>State</b>	<b>3,000</b>	<b>3,000</b>	<b>2,000</b>	<b>2,000</b>	<b>63.0</b>	<b>71.0</b>	<b>126,000</b>	<b>142,000</b>

1/ Included in other counties.

2/ Other counties could have come from any of the districts.

Northeast II Region Farm Labor

There were 24,000 hired workers on the Northeast II Region farms and ranches during the week of January 8-14, 2006, up 33 percent from a year ago. States included in the Northeast Region II are Delaware, Maryland, New Jersey, and Pennsylvania. Hours worked during the reference week averaged 38.1 hours, up 4.4 hours from the previous year.

Farm operators in the Northeast Region II paid their hired workers an average wage of \$10.56 per hour during the January 2006 reference week, up 90 cents from a year earlier. Field workers received an average of \$9.89 per hour, up \$1.42 from last January, while livestock workers earned \$7.79 per

hour, compared with \$8.76 a year earlier. In New Jersey, during the reference week, temperatures were above normal most of the week in most localities. There were measurable amounts of rainfall across most of the state.

At the U.S. level, farm operators paid their hired workers an average wage of \$10.11 per hour, 45 cents less than the Northeast Region II producers paid. There were 616,000 hired workers on farms across the nation. The number of hours worked during the reference week averaged 38.2 hours compared to 38.1 hours in Northeast Region II.

Farm Labor & Wage Rates: Northeast II Region and United States

Items	Northeast II 1/			United States		
	January 2005 2/	October 2005 2/	January 2006 2/	January 2005 2/	October 2005 2/	January 2006 2/
	<i>Thousand workers</i>			<i>Thousand workers</i>		
<b>Hired Workers 3/</b>	18	39	24	589	842	616
150 Days or More	14	32	21	494	621	513
149 Days or Less	4	7	3	95	221	103
	<i>Per Week</i>			<i>Per Week</i>		
<b>Average Hours</b> (Hired Farm Workers)	33.7	39.6	38.1	37.0	42.0	38.2
	<i>Per Hour</i>			<i>Per Hour</i>		
<b>Average Wage Rate</b> (All Hired Farm)	\$9.66	\$10.00	\$10.56	\$9.78	\$9.61	\$10.11
<b>By Type of Workers</b>						
Field	\$8.47	\$9.21	\$9.89	\$8.71	\$8.90	\$9.15
Livestock	\$8.76	\$8.62	\$7.79	\$9.20	\$9.15	\$9.25

1/ Delaware, Maryland, New Jersey, and Pennsylvania.

2/ Month refers to the week containing the 12<sup>th</sup> day of the month.

3/ Excludes agricultural service workers.

### February Farm Prices Unchanged From Last Month

The preliminary All Farm Products Index of Prices Received by Farmers in February, at 113, based on 1990-92=100, is unchanged from the January Index. The Crop Index is up 4.6 percent while the Livestock Index is down 3.4 percent. Producers received higher prices for oranges, wheat, hay and hogs. Lower prices were received for cattle, tomatoes, milk and eggs. The seasonal change in the mix of commodities farmers sell, based on the past 3-year average, also affects the overall index. Increased average marketings of cattle, milk, broilers and strawberries offset decreased marketings of corn, soybeans, wheat and cotton.

This preliminary All Farm Products Index is down 0.9 percent from February 2005. The Food Commodities Index, at 116, declined 1.7 percent from last month, and was down 1.7 percent February 2005.

### Prices Paid Index Unchanged

The February Index of Prices Paid for Commodities and Services, Interest, Taxes, and Farm Wage Rates (PPITW) is 146 percent of the 1990-92 average. The index is unchanged from January, but 6.6 percent above February 2005. Lower prices in February for feeder cattle, feeder pigs, LP gas and herbicides were offset by higher prices for complete feeds, hay and forages, feed supplements, and self-propelled machinery.

### Average Prices Received by Farmers: United States

Item	Entire Month		Preliminary
	Feb 2005	Jan 2006	Feb 2006
-- Dollars --			
<b>Field Crops</b>			
Barley, per bushel	2.31	2.47	2.55
Corn, per bushel	1.95	2.00	2.01
Hay, all, baled, per ton <sup>1/</sup>	88.20	91.20	95.00
Soybeans, per bushel	5.42	5.88	5.68
<b>Fruit, fresh</b>			
Apples, per lb <sup>2/</sup>	.203	.260	.259
Strawberries, per cwt	112.00	142.00	115.00
<b>Vegetables, fresh</b>			
Corn, Sweet, per cwt	28.60	36.50	29.40
Lettuce, per cwt	11.70	10.50	9.49
Tomatoes, per cwt	40.90	79.20	48.80
<b>Livestock and Livestock Products</b>			
Beef Cattle, per cwt	88.80	95.10	92.60
Steers and Heifers, per cwt	93.10	102.00	98.10
Cows, per cwt <sup>3/</sup>	52.50	47.30	48.50
Calves, per cwt	129.00	141.00	142.00
Broilers, live, per lb <sup>4/</sup>	.430	.380	.380
Eggs, all, per dozen <sup>1/</sup>	.551	.610	.500
Milk, all, per cwt <sup>5/ 6/</sup>	15.50	14.50	13.80

<sup>1/</sup> Mid-month price.

<sup>2/</sup> Equivalent packinghouse-door returns for CA, MI, and NY (apples only), and WA (apples, peaches, and pears). Prices as sold for other states.

<sup>3/</sup> Beef cows and cull dairy cows sold for slaughter.

<sup>4/</sup> Equivalent liveweight returns to producers for most states. Includes growers and contractors.

<sup>5/</sup> Before deductions for hauling. Includes quality, quantity, and other premiums. Excludes hauling subsidies.

<sup>6/</sup> February 2006 fat test percent: all milk 3.75 fluid milk 3.74 and mfg grade 3.93

