

INCODEL

PURPOSE

IncodeL was established in 1936 by the States of Delaware, New Jersey, New York and Pennsylvania for the purpose of formulating programs for the wise development, utilization and conservation of the natural resources of the Delaware River Basin.

ORGANIZATION

The Commission consists of twenty members. IncodeL's Articles of Organization provide that each state group of five shall be comprised of a member-at-large and a representative of each of the four following branches of state government: Senate, House of Representatives, Executive Department and State Planning Board.

MEMBERS OF COMMISSION

DELAWARE

MR. JAMES H. BAXTER, JR.
Member, Commission on Interstate Cooperation

HON. JAMES A. CAMPBELL
Member, House of Representatives

MR. CLAYTON M. HOFF, *Vice Chairman*
Chairman, Commission on Interstate Cooperation

HON. RAYMOND B. PHILLIPS
Secretary, Commission on Interstate Cooperation

HON. WILMER F. WILLIAMS
Member, State Senate

NEW JERSEY

HON. CHARLES R. ERDMAN, JR.,
Vice Chairman
Comm'r., Dept. of Conservation and Economic Development

HON. ANDERSON FOWLER
Member, State Assembly

HON. WARREN N. GAFFNEY
Comm'r., Dept. Banking & Insurance

HON. ALFRED B. LITTELL
Member, State Senate

HON. JOHN M. SUMMERILL, JR.
Member, State Senate

NEW YORK

HON. ELISHA T. BARRETT
Vice-Chairman
Chairman, Commission on Interstate Cooperation

HON. NATHANIEL L. GOLDSTEIN
Attorney General

HON. ELMER J. KELLAM
Member, State Assembly

HON. HAROLD KELLER
Commissioner, Dept. of Commerce

HON. MacNEIL MITCHELL
Member, State Senate

PENNSYLVANIA

HON. WELDON B. HEYBURN
State Treasurer

HON. FRANKLIN H. LICHTENWALTER
Former Member of U. S. Congress and Speaker Penna. House of Representatives

MR. FRANCIS A. PITKIN, *Chairman*
Director, State Planning Board

HON. CHARLES C. SMITH
Speaker State House of Representatives

HON. EDWARD B. WATSON
Member, State Senate

JAMES H. ALLEN
Executive Secretary-Treasurer

You are Viewing an Archived Copy from the New Jersey State Library A TWELVE POINT CONSERVATION PROGRAM FOR THE DELAWARE RIVER BASIN

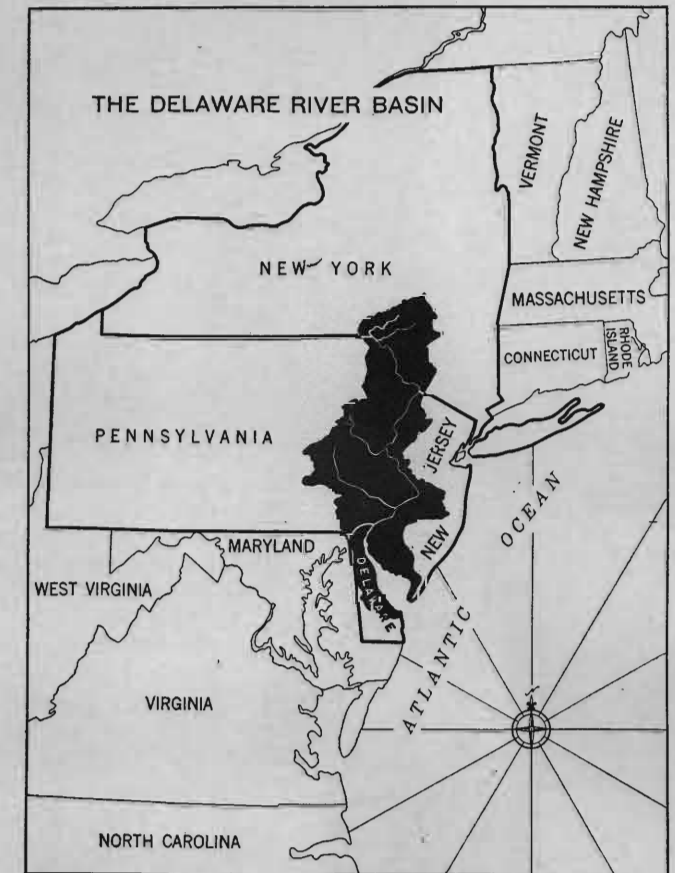
- 1. Municipal Sanitation**
To assist governmental agencies in forwarding the construction of sewage collection and treatment plants.
- 2. Industrial Waste**
To encourage the installation of works for the treatment and recovery of industrial wastes.
- 3. Schuylkill River Restoration Project**
To work for the early completion of the Schuylkill River clean-up project.
- 4. Water Supply**
To integrate the activities of New York, New Jersey and Pennsylvania in planning future water supply projects.
- 5. Ground Water Protection**
To secure the acceptance of programs for the protection of ground water resources.
- 6. Flood Control**
To promote the co-ordination of federal, state and local government projects for flood control.
- 7. Fish and Shellfish**
To further the programs which will restore fishing, and protect the oyster and other shellfish industries.
- 8. Forestry**
To campaign for the adoption of appropriate forest protection and management measures.
- 9. Soil Conservation**
To secure the adoption of a basin wide program to prevent soil erosion.
- 10. Port, Transportation and Navigation**
To urge improvements and extensions of port and transportation facilities, and protect and promote the States' interests in the development of Federal navigation projects.
- 11. Recreation**
To aid in the protection and promotion of the recreational assets of the region.
- 12. Unified Basin Development**
To formulate a unified and sound plan for the development of the Delaware River Basin.

NEW JERSEY STATE LIBRARY

INC ODEL

THE INTERSTATE COMMISSION ON
THE DELAWARE RIVER BASIN

NOV 27 1963



The Delaware River Basin

Nowhere in the nation is there a river system more important and valuable than the Delaware. It serves and is the common property of four states, New York, New Jersey, Pennsylvania and Delaware, having a combined population of more than 30 million persons, 20 per cent of the whole United States.

341 SUBURBAN STATION BUILDING
PHILADELPHIA, PENNSYLVANIA

FARLEIGH DICKINSON UNIVERSITY

974.90
D343
1945
copy

DELAWARE WATER GAP
The 8th Wonder of the World

→
Above Trenton the region around the Delaware and its tributaries is one of the finest natural recreational areas in the country. The fishing, swimming, boating, camping, hunting, skiing and skating are within two hours driving distance of 15 million people.



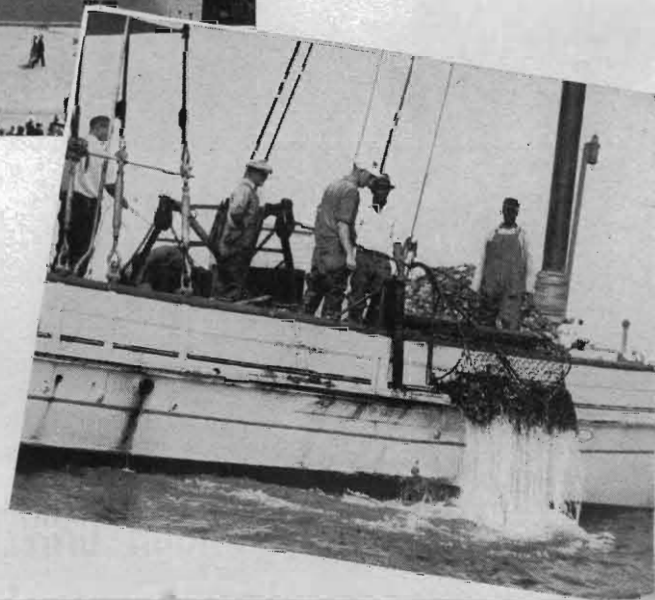
DELAWARE RIVER PORT FACILITIES

←
From Trenton to Wilmington, the Delaware constitutes the largest fresh water port in the country. Here is located the League Island Navy Yard at Philadelphia. Industry and business have invested hundreds of million dollars in this region.



OYSTER BOATS

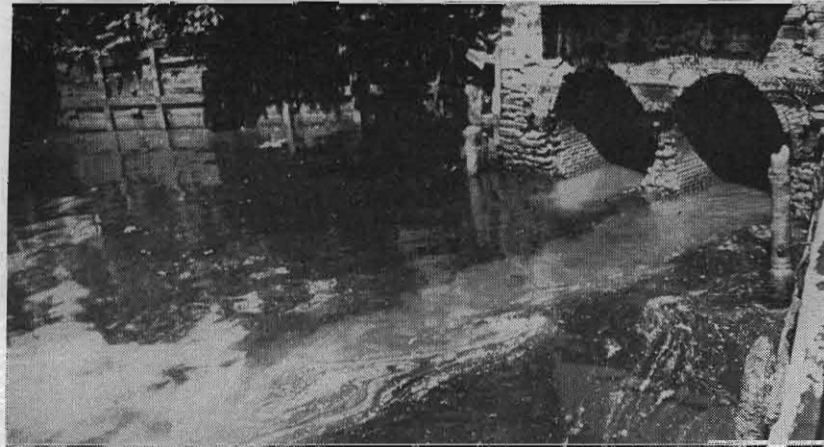
→
In its lowermost reaches, the river is the locus of a \$50,000,000 oyster industry and a valuable center of recreation.



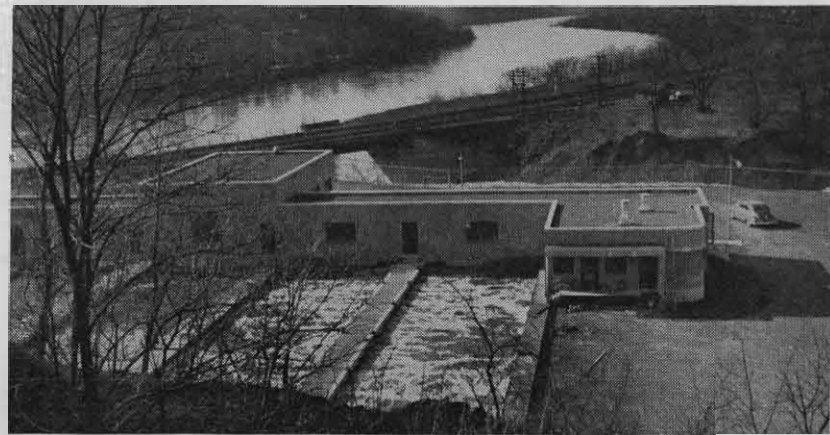
You are Viewing an Archived Copy from the New Jersey State Library

The Delaware River Basin
STREAM POLLUTION ABATEMENT

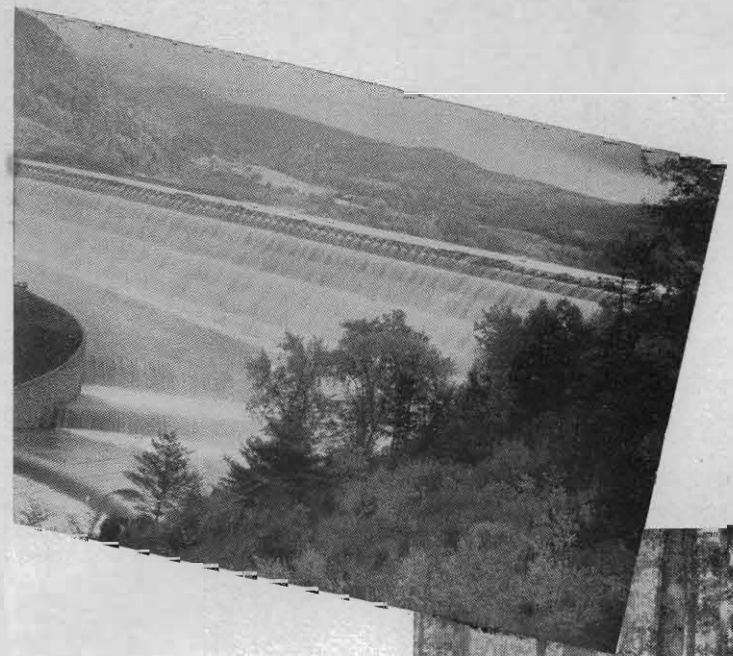
The coordinated program for the construction of municipal and industrial waste treatment works which is being carried out cooperatively by the four states' departments of health and Incodel has resulted in substantial improvement in the water quality of the streams in the Delaware River Basin.



A recent report of the United States Public Health Service on the status of pollution abatement activities throughout the United States indicates greater progress in the Delaware River Basin than any other major river basin in the country.



The continued cooperation of the municipalities, industries and the support of the citizens of the Delaware River Basin is essential for the restoration of the streams to their principal economic usefulness.



WATER SUPPLY RESERVOIR

←
The highest use of the waters of the Delaware River is for water supply.

FOREST CONSERVATION

→
Never in history has it been more imperative to utilize and manage the forest resources of the Delaware River Basin properly.



A FARM RUINED BY EROSION

←
One of Incodel's major aims is to secure the adoption of programs to hold top-soil in the Delaware River Basin on the land where it belongs.

