

APPENDIX



Joint Committee on the Public Schools

March 23, 2021

Manuel Da Silva's Opening Remarks

Good morning.

It is a pleasure to have the opportunity to appear before you today to share an update on the important work the SDA is doing to impact the lives of students throughout New Jersey. Here with me today are Andrew Yosha, Vice President of Program Operations and Strategic Planning and Scarlett Rajski, Director of Legislative Affairs. Together, we will do our best to answer any questions you have about the school construction program.

This past fall alone, we delivered three new schools and one major addition. The new schools are in East Orange, Harrison and Pemberton and the addition was at the Millville High School project that is ongoing. In the three years since SDA last appeared before you, we have delivered 11 new schools and one major addition. Overall, these project completions provided school districts with 8,500 much needed student seats where schools lacked capacity or educational adequacy.

While many of these facilities were not occupied through the early part of this school year due to the COVID-19 pandemic, the work of the SDA still benefitted student learning. SDA facilities are delivered with 1:1 technology which, now more than ever before, is an educational necessity. The technology SDA delivers includes a combination of tablets, chrome books, desktops or laptops as deemed appropriate within each school district's educational program.

/x

The SDA currently has 8 capital projects in construction. This includes 2 schools and two additions that will open this September. Combined, these schools will provide another 10,600 new seats and 1.8 million square-feet of new construction to aid in student learning. In addition there are three additional projects in the planning, programming and design stages. With the Chair's permission, I would like to take a moment to share with the Committee some slides of our active projects so that you can see the significant work that is underway.

(Power Point Presentation)

We know that there is significant interest in our ROD Grant Program as well. To date, SDA has executed more than 5,400 grants impacting 524 school districts. Currently, there are 265 active grants throughout the state that represent a state investment of more than \$133 million. As you may know, funding for additional grants is not available at this time as the previous approved funding has been nearly fully allocated.

The SDA has also moved forward in this last year with new initiatives to address needs as they arise. By way of example, following enactment of Alyssa's Law last year, SDA assumed responsibility for certifying the compliance or proposed compliance with the Law of 581 schools districts statewide. As of the end of last month, we have received 577 applications for review, the vast majority of which have been approved.

When concerns arose about the presence of mercury flooring in schools throughout the state, SDA developed and advanced a multi-step initiative in 2020 to evaluate flooring materials installed in SDA-delivered school facilities. We did this in consultation with the DOH and utilizing the guidance they provided regarding mercury in flooring. We examined the floors, performed bulk sampling and identified where the performance of air testing was appropriate. Air monitoring activities are ongoing and are being

Lx

performed cognizant of district operational needs. The SDA will address any needed corrective measures identified upon the conclusion of ongoing testing.

During this extraordinary year it was important to our districts and to the construction industry that the work of the SDA was deemed essential by Governor Murphy throughout this pandemic. The SDA moved quickly in mid-March 2020 to ensure that safety measures at all of our work sites conformed to available guidance and were appropriate to the particulars of each site. I am happy to report that, during this challenging year, we were able to uphold our commitments to our school districts while keeping our staff and construction partners safe.

With respect to the impact of COVID-19 on school facilities, significant attention was paid to ventilation in school buildings. As a result, the SDA reviewed its current Materials and Systems Standards with specific attention to the HVAC standards. We found that the SDA's standards align well with the current NJDOH indoor air quality standards and, CDC and ASHRAE guidance and requirements that were issued as guidance for school ventilation during COVID-19. Therefore, we encourage New Jersey School Districts and others building new schools to look to the SDA's standards as a source of best practices. Even in cases of existing school buildings, Districts can utilize these standards to see if there are ways to improve existing systems to achieve their best air circulation.

As you know, the Governor has proposed \$200 million in this year's budget to support the work of the SDA. An additional \$75 million was proposed to fund emergent and capital maintenances needs in SDA and ROD Districts. Significant needs still exist statewide. District-wide overcrowding is impacting thousands of students trying to learn in overcrowded classrooms. Also, there are still many schools that do not conform to educational standards. SDA's 2019 Strategic Plan provides the sequencing of SDA

activities that will address the significant overcrowding and aging infrastructure needs that exist in many SDA districts. We are also committed to addressing the school facility needs in our Regular Operating Districts.

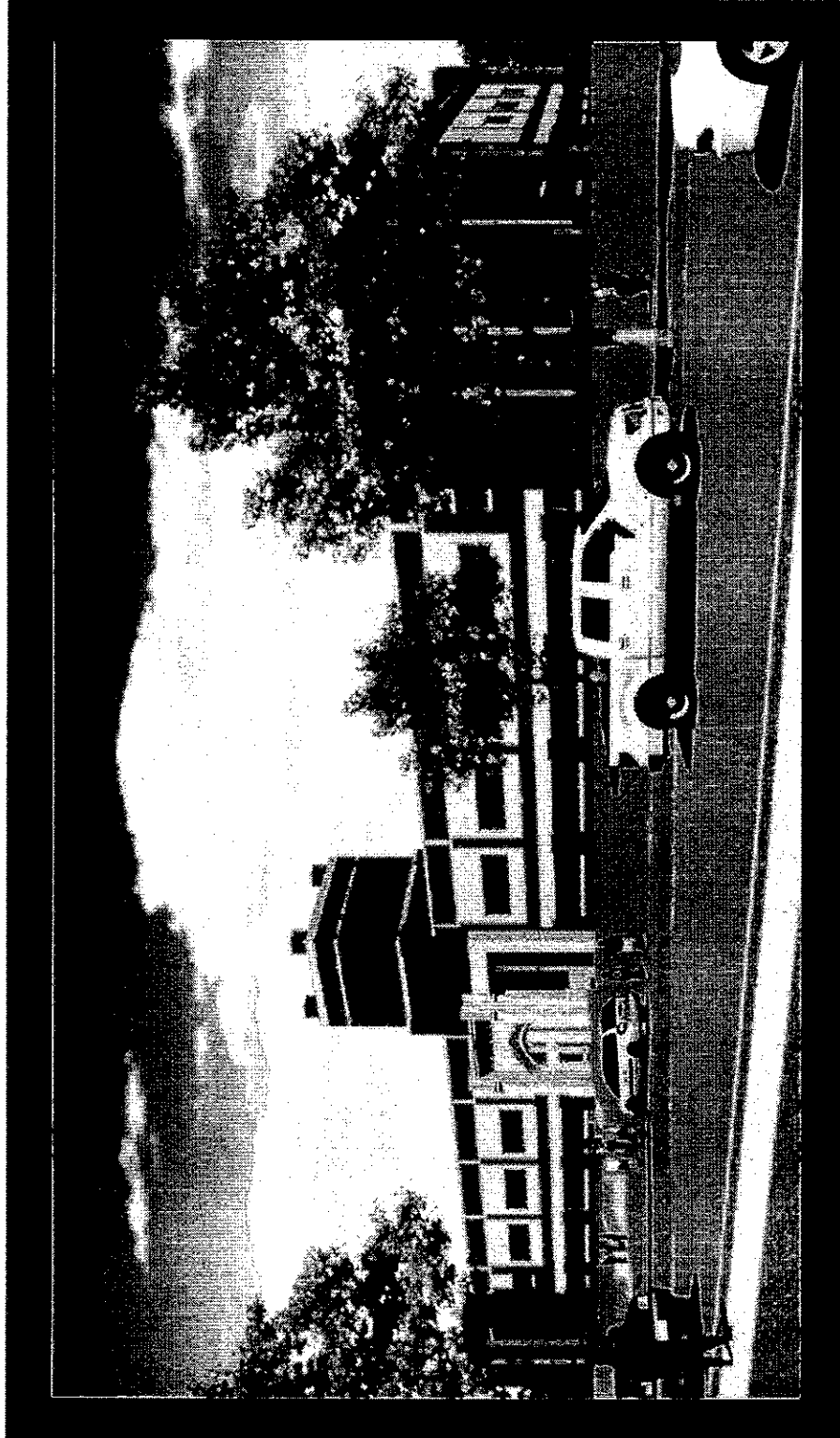
SDA has the expertise, the solid track record and a reliable, proven ability to deliver schools and address the remaining educational facility needs that exist throughout New Jersey. Our innovative approach to project delivery has served as a model for others.

In terms of staff size, we are the leanest that we have ever been, but we have learned how to maximize our resources and to develop and deliver projects in a way that addresses specific district needs, values predictability and minimizes changes as projects advance. We keep our commitments to the school districts, students and taxpayers of New Jersey.

To conclude, SDA is a vibrant agency full of talented professionals committed to our mission of building quality schools for children across New Jersey, which they so rightly deserve. We remain committed and look forward to working with the Administration, the legislature and our stakeholders to advance SDA's significant and much needed school construction work going forward.

Thank you and I am available to answer any questions you have.

CAMDEN HIGH SCHOOL



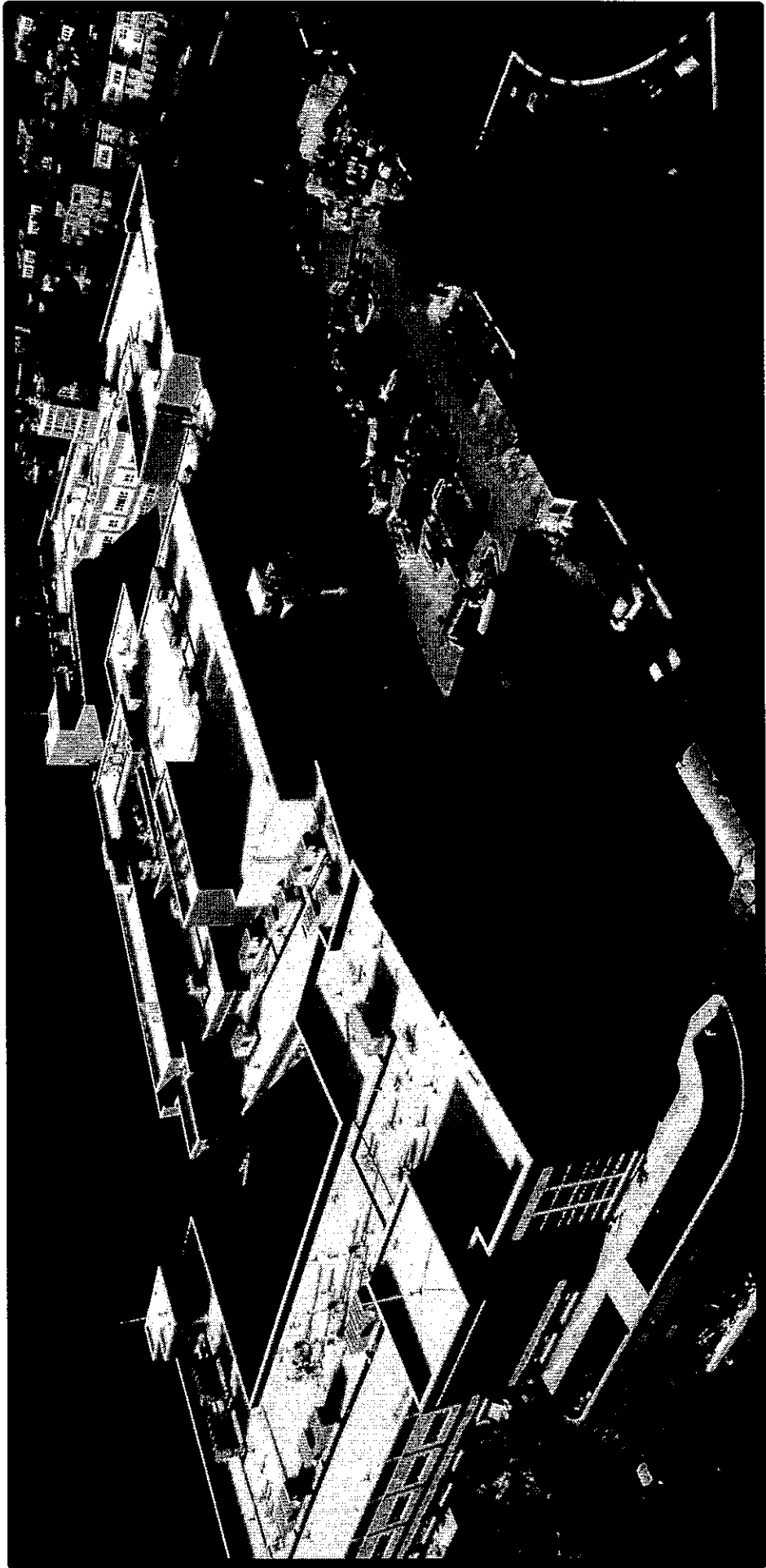
SCHOOL DISTRICT:
CAMDEN

PROJECT TYPE:
NEW SCHOOL

SQUARE-FEET:
270,000

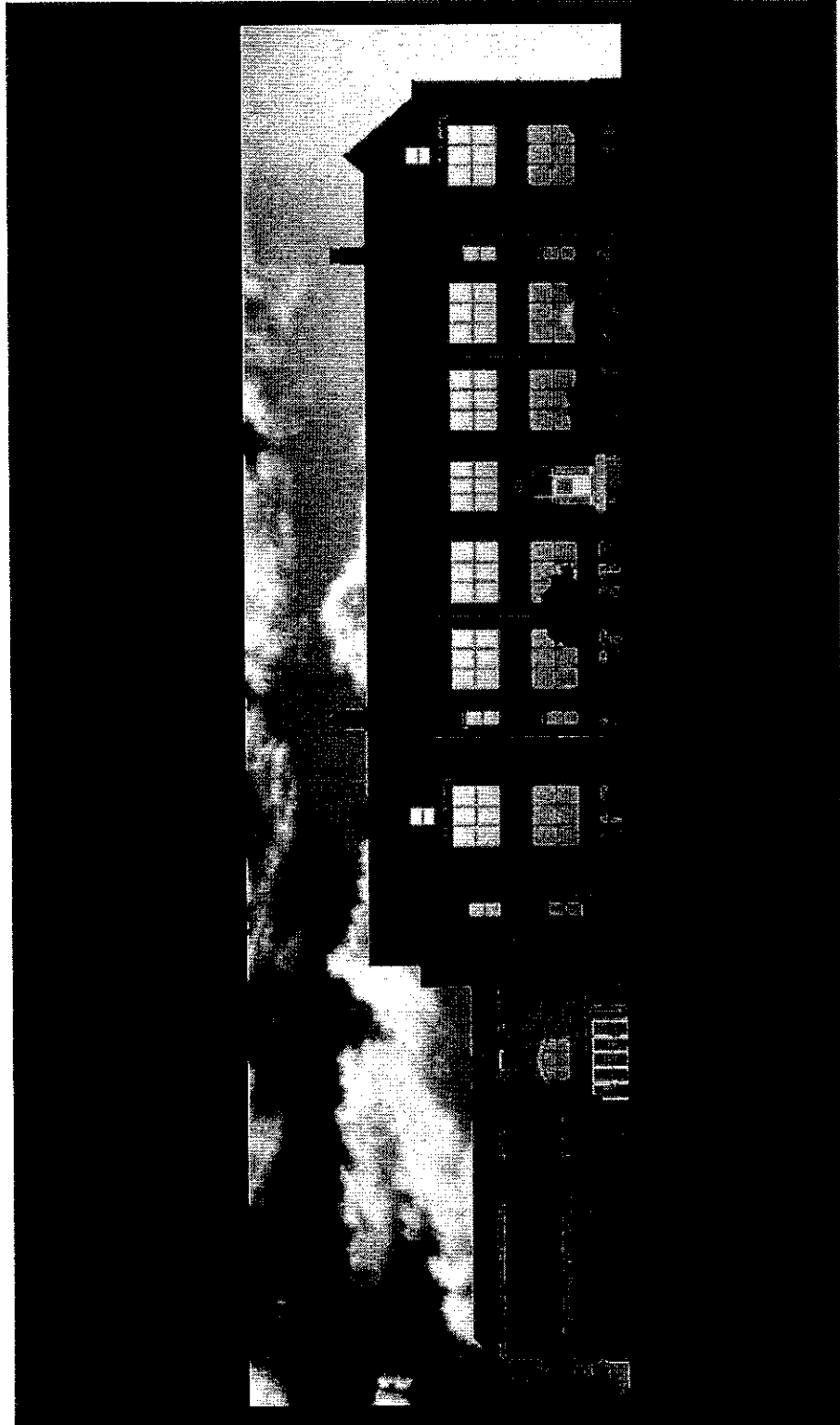
**MAX STUDENT
CAPACITY:**
1,468

CURRENT CONSTRUCTION PROGRESS:



6x

CLEVELAND STREET ELEMENTARY SCHOOL



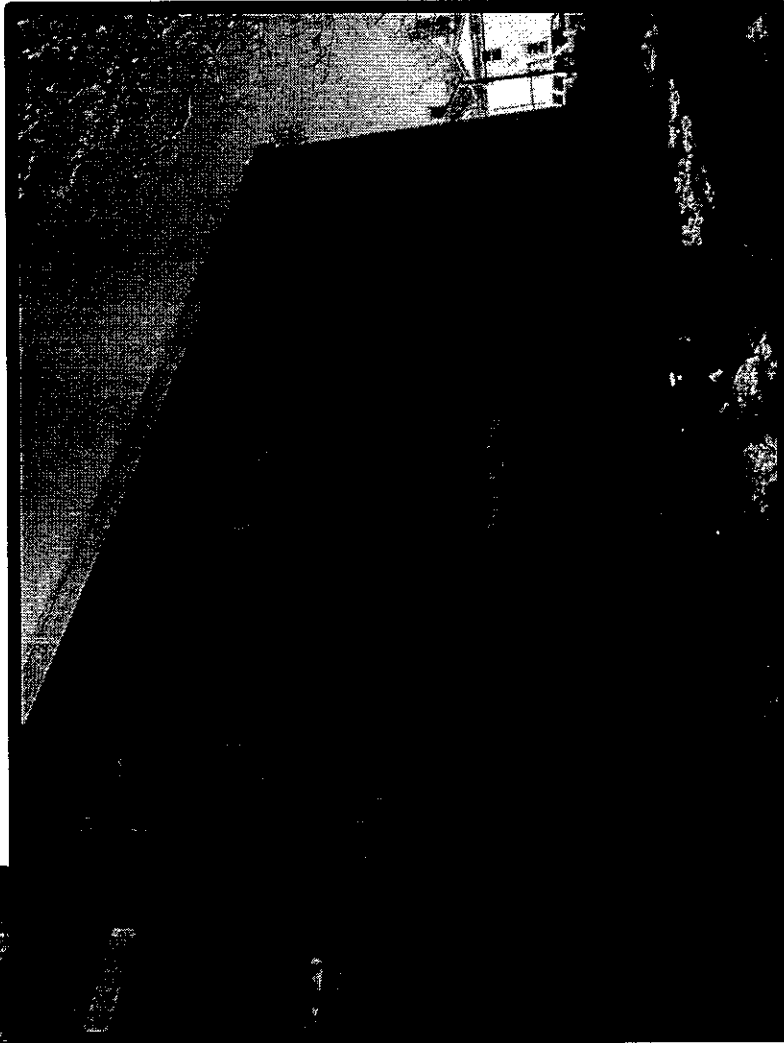
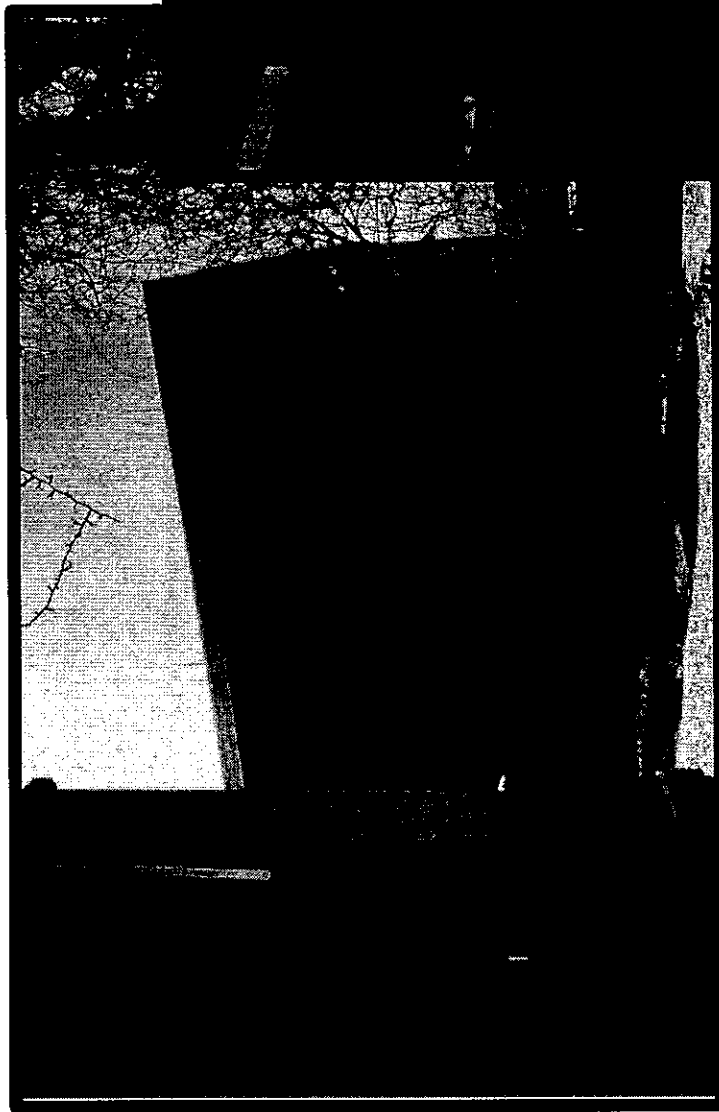
SCHOOL DISTRICT:
CITY OF ORANGE

PROJECT TYPE:
ADDITION/
RENOVATION

SQUARE-FEET:
11,500 (addition)

**MAX STUDENT
CAPACITY:**
348

CURRENT CONSTRUCTION PROGRESS:



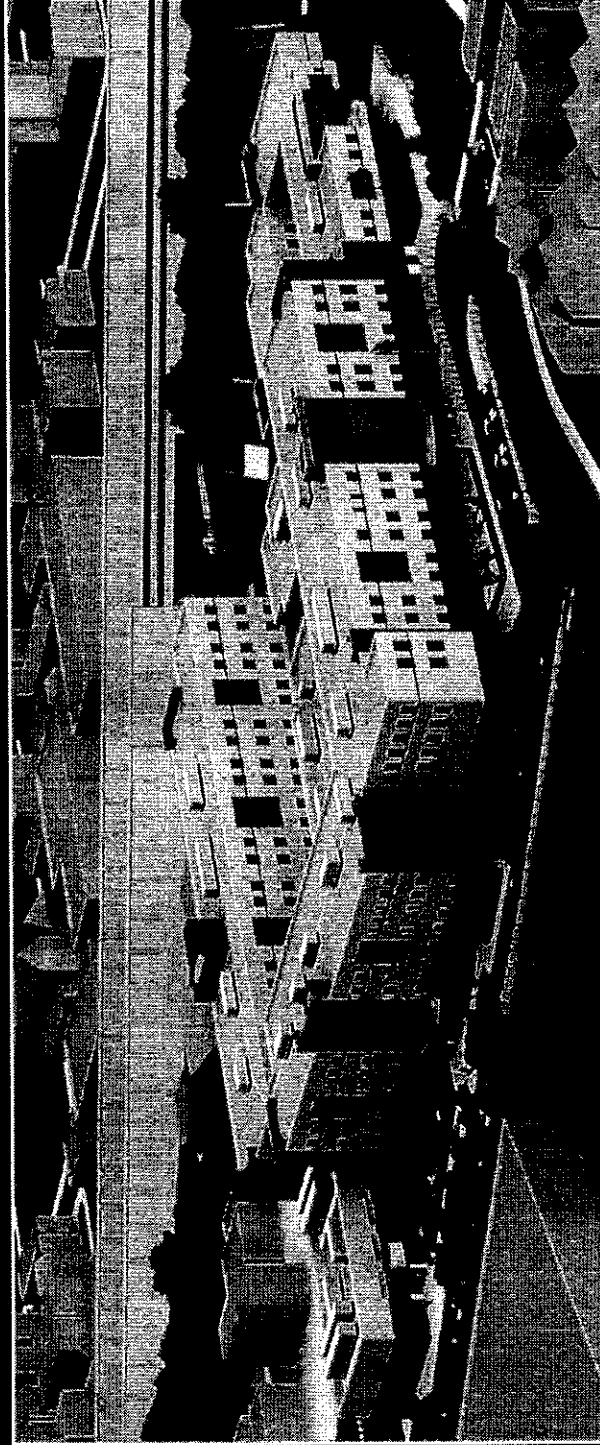
DAYTON AVENUE EDUCATIONAL CAMPUS

SCHOOL DISTRICT:
PASSAIC CITY

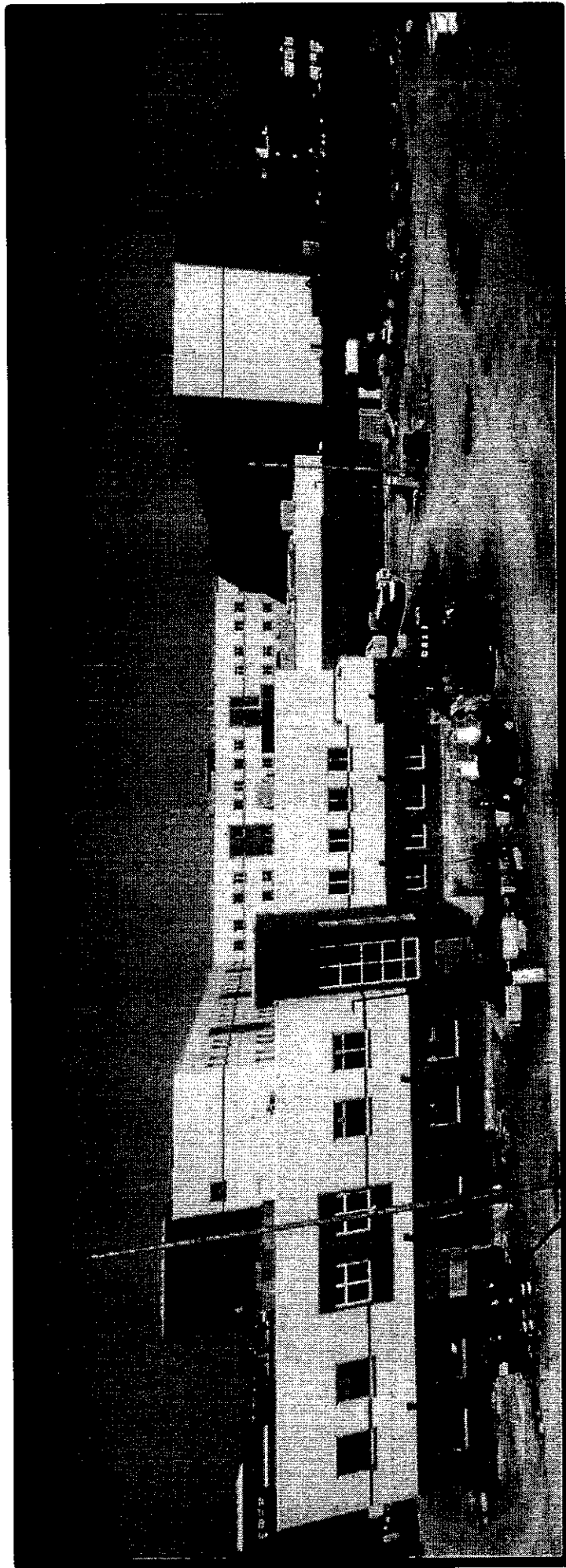
PROJECT TYPE:
NEW SCHOOL

SQUARE-FEET:
448,000

**MAX STUDENT
CAPACITY:**
3,020

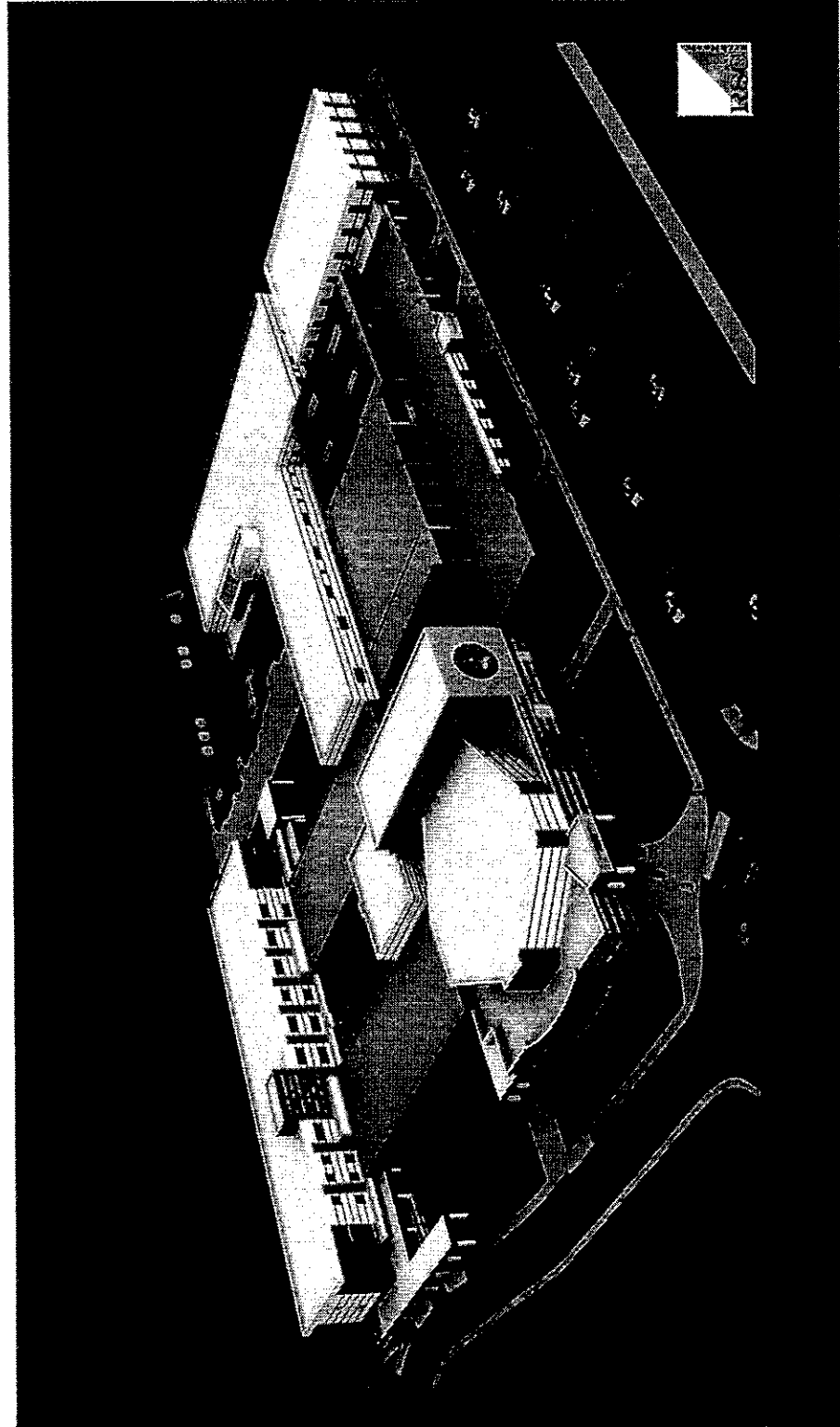


CURRENT CONSTRUCTION PROGRESS:



10x

MILLVILLE SENIOR HIGH SCHOOL



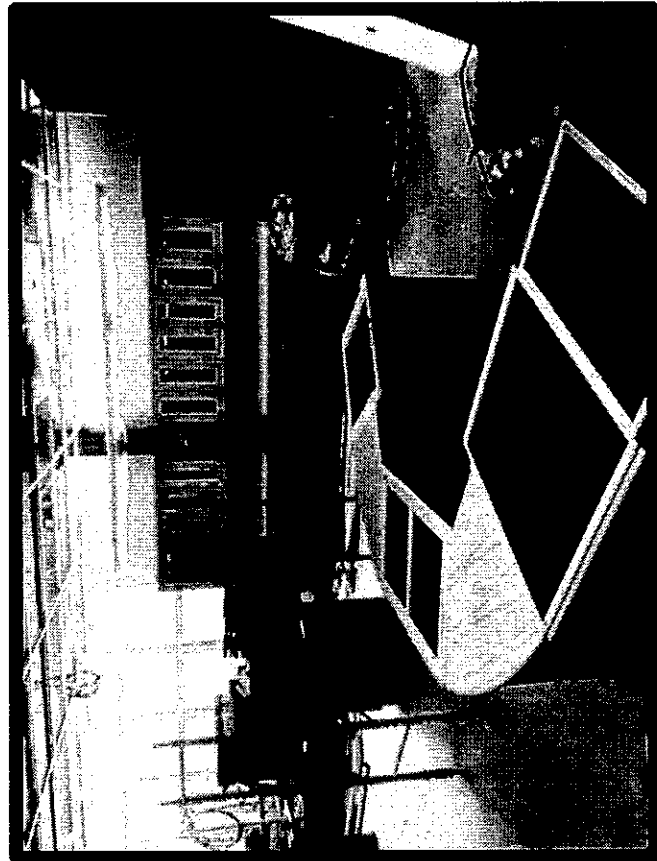
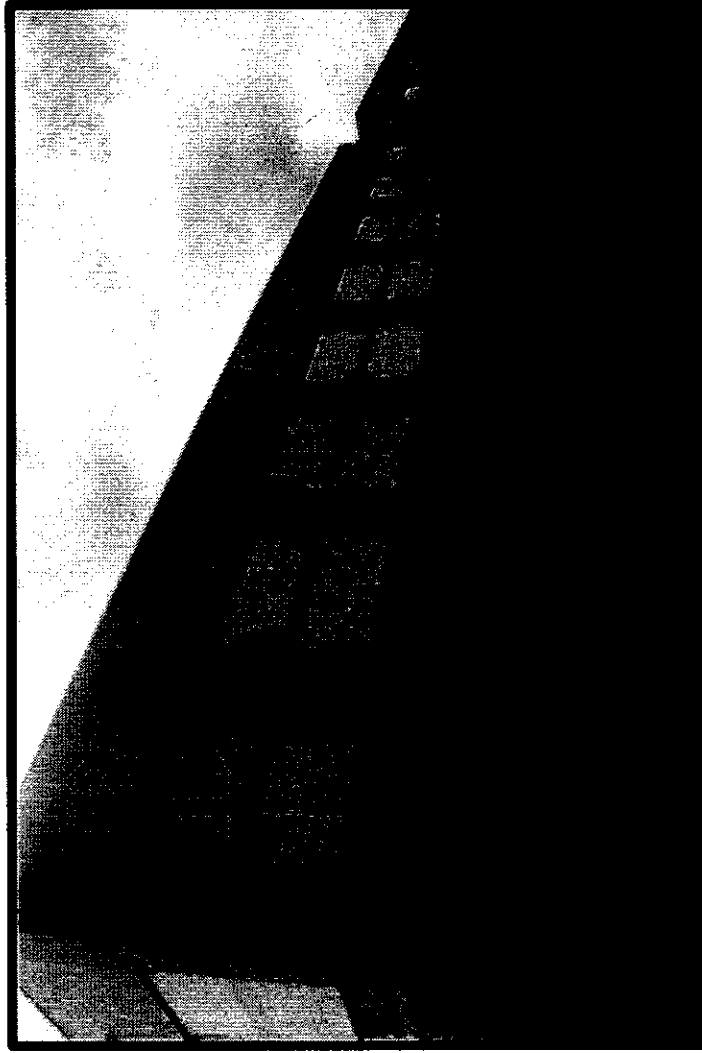
SCHOOL DISTRICT:
MILLVILLE

PROJECT TYPE:
ADDITION/
RENOVATION

SQUARE-FEET:
228,554 (addition)

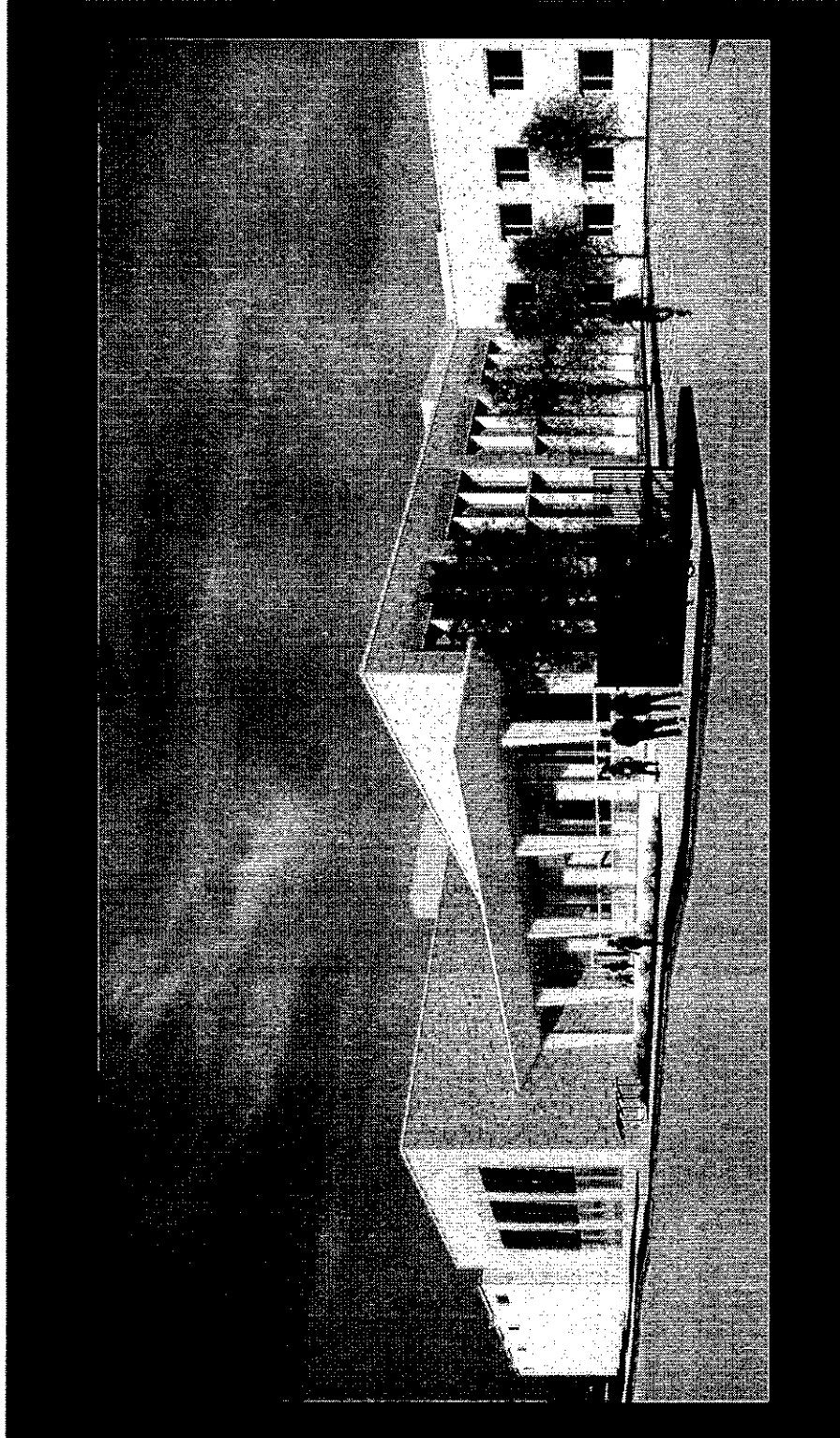
**MAX STUDENT
CAPACITY:**
2,384

CURRENT CONSTRUCTION PROGRESS:



12x

ORANGE HIGH SCHOOL



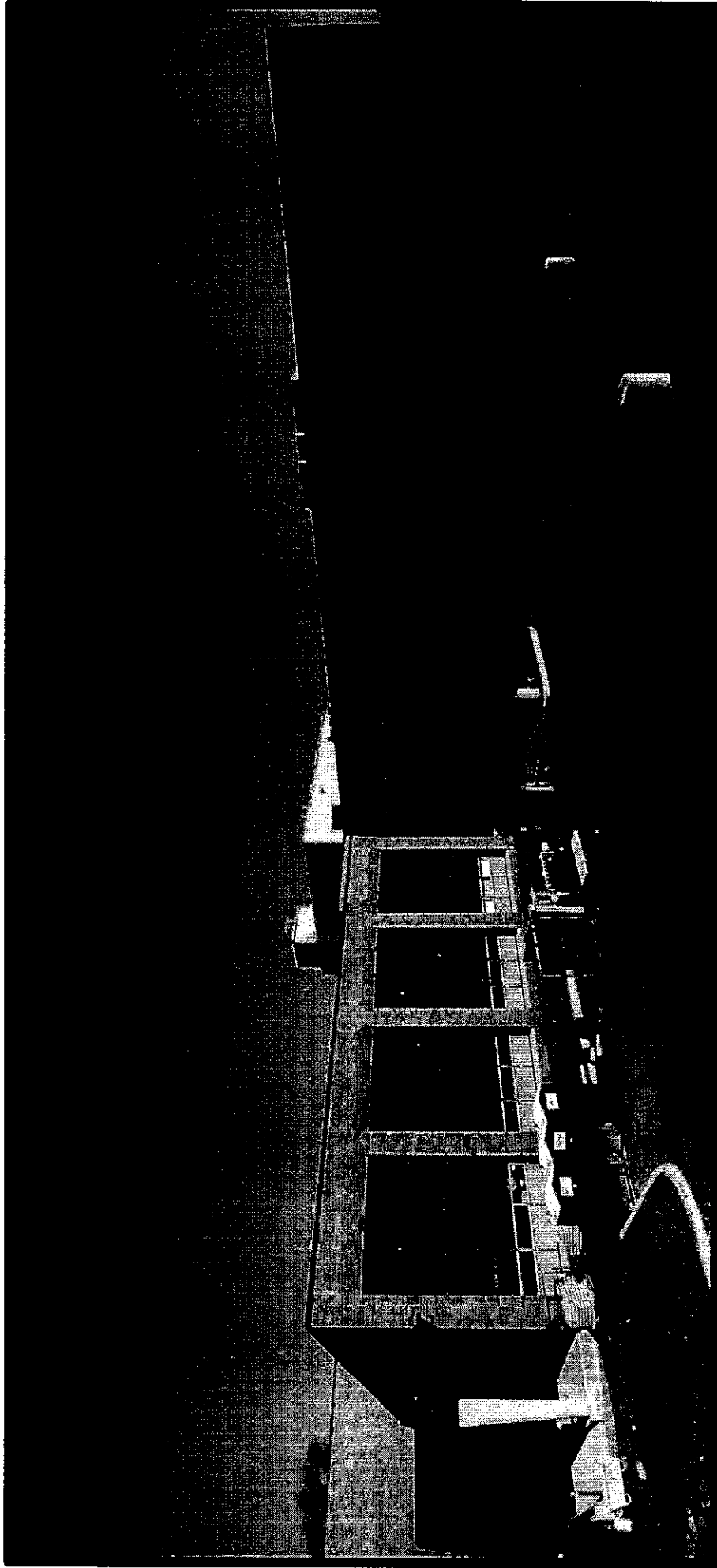
SCHOOL DISTRICT:
CITY OF ORANGE

PROJECT TYPE:
ADDITION/
RENOVATION

SQUARE-FEET:
50,000 (addition)

**MAX STUDENT
CAPACITY:**
1,694

CURRENT CONSTRUCTION PROGRESS:



14X

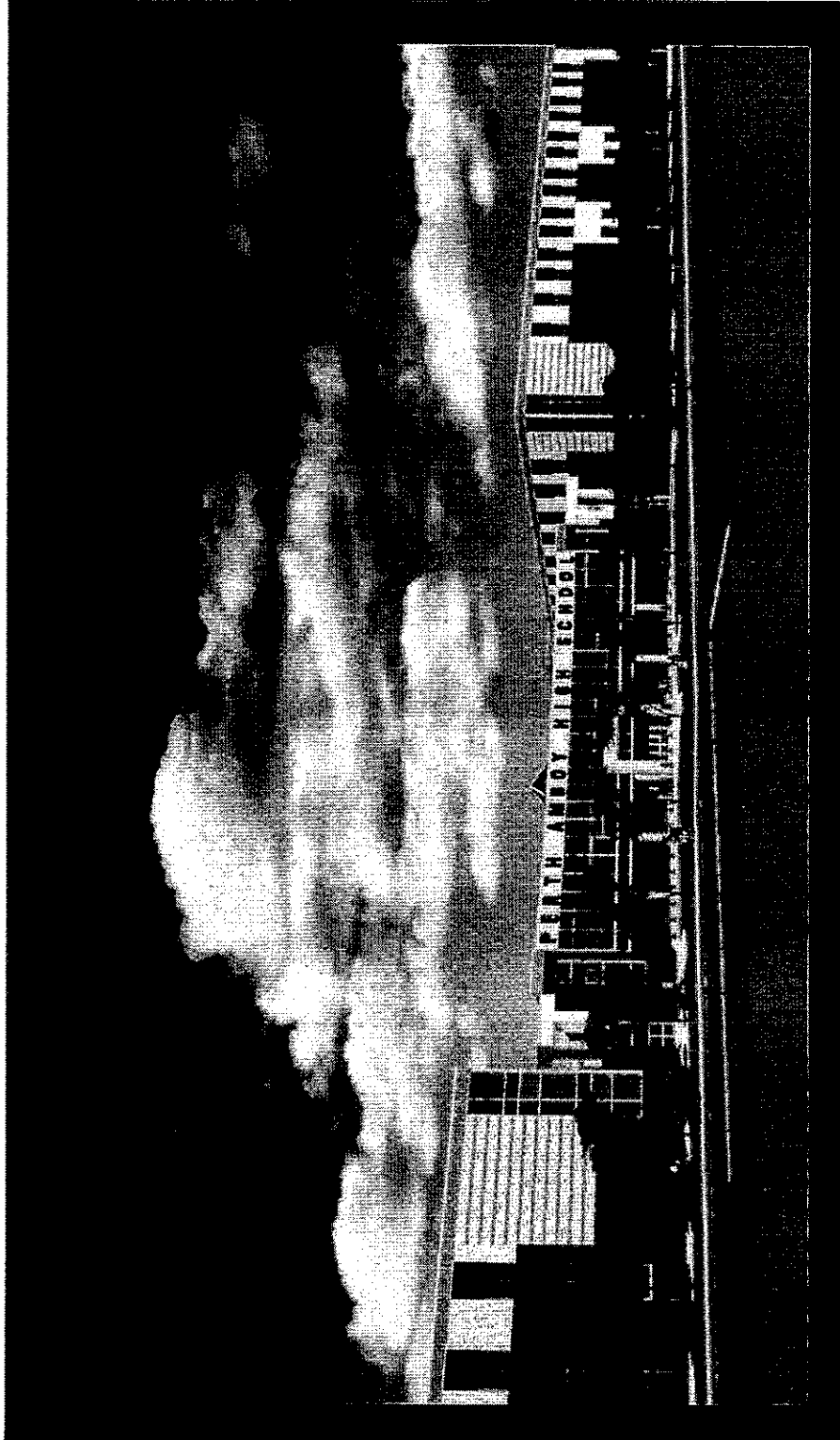
PERTH AMBOY HIGH SCHOOL

SCHOOL DISTRICT:
PERTH AMBOY

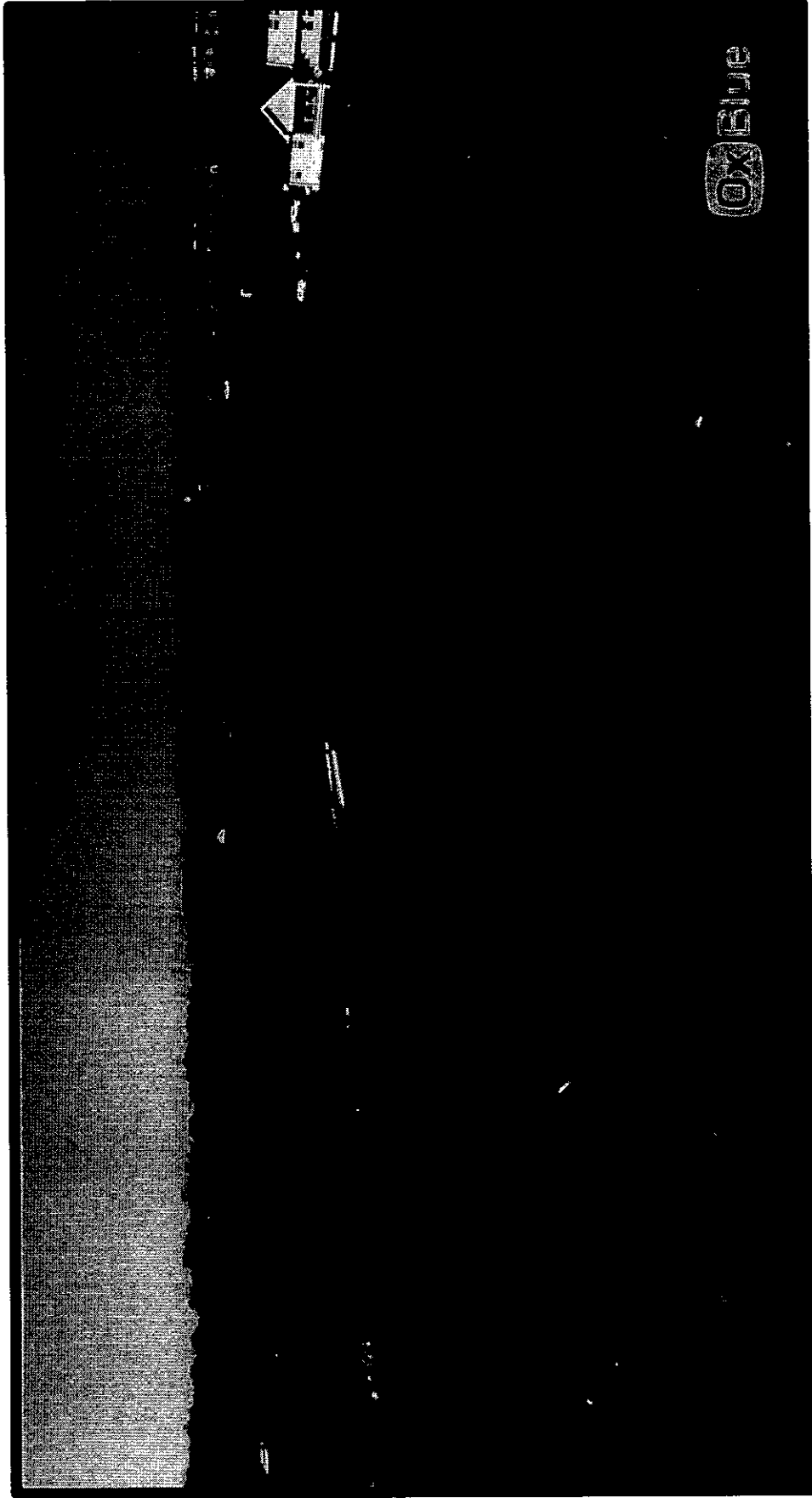
PROJECT TYPE:
NEW SCHOOL

SQUARE-FEET:
576,000

**MAX STUDENT
CAPACITY:**
3,295



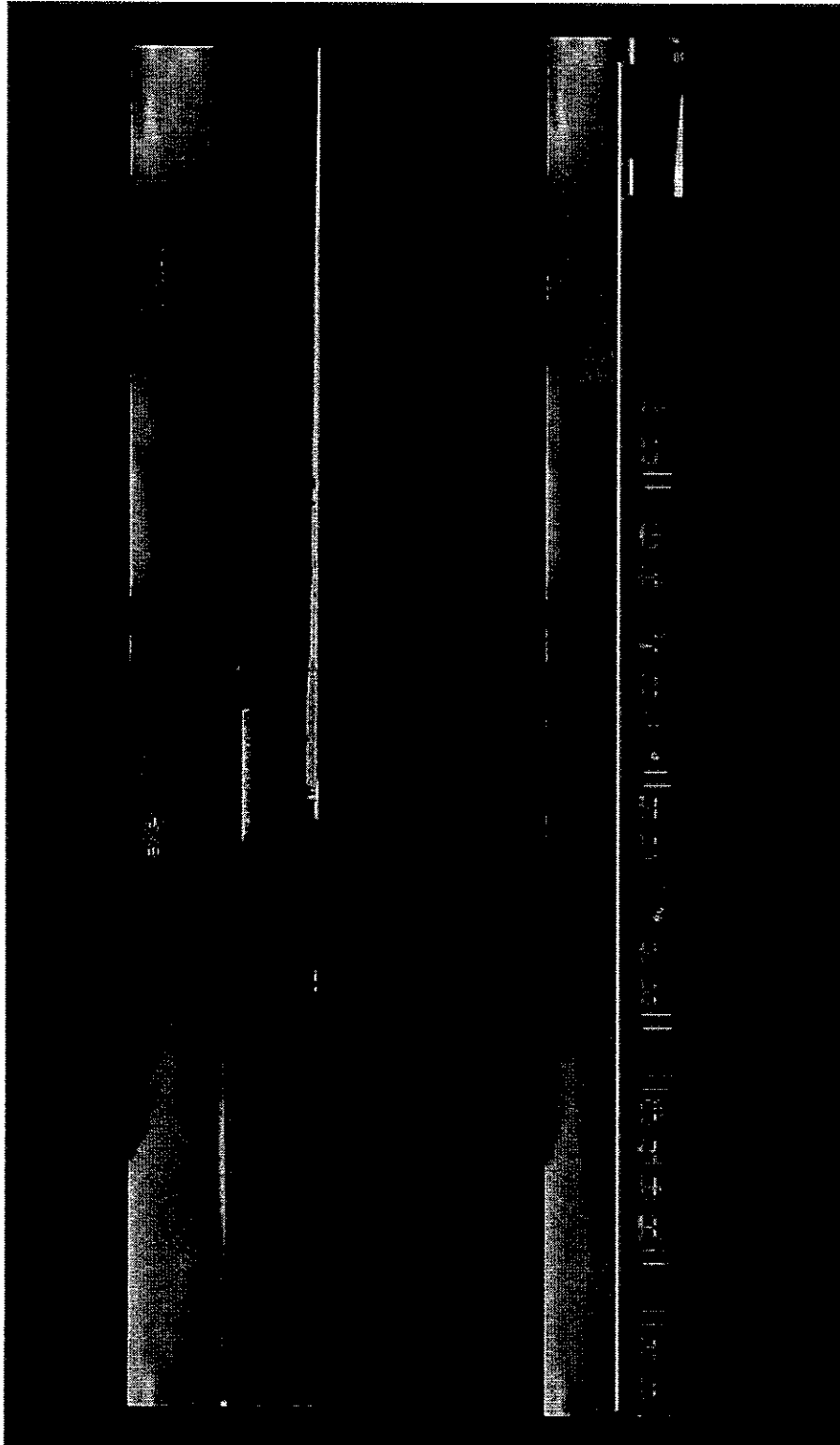
CURRENT CONSTRUCTION PROGRESS:



OxBlue

16x

PORT MONMOUTH ROAD ELEMENTARY SCHOOL



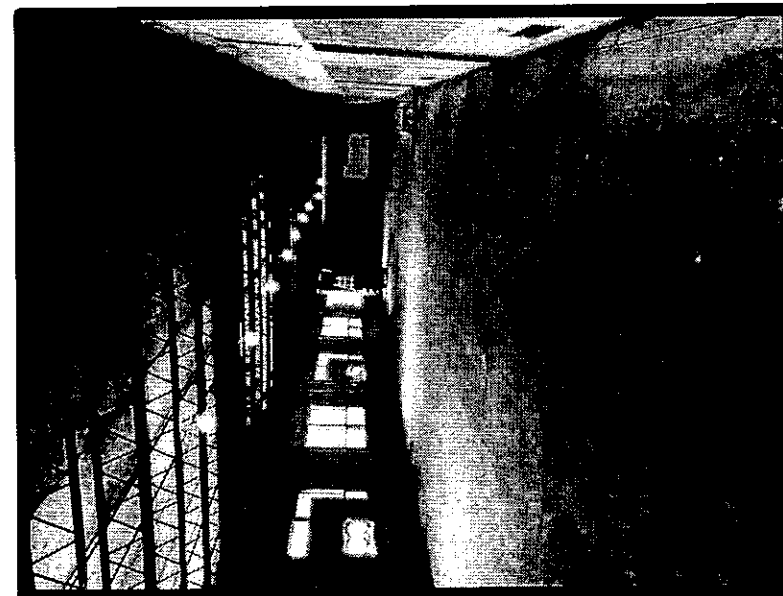
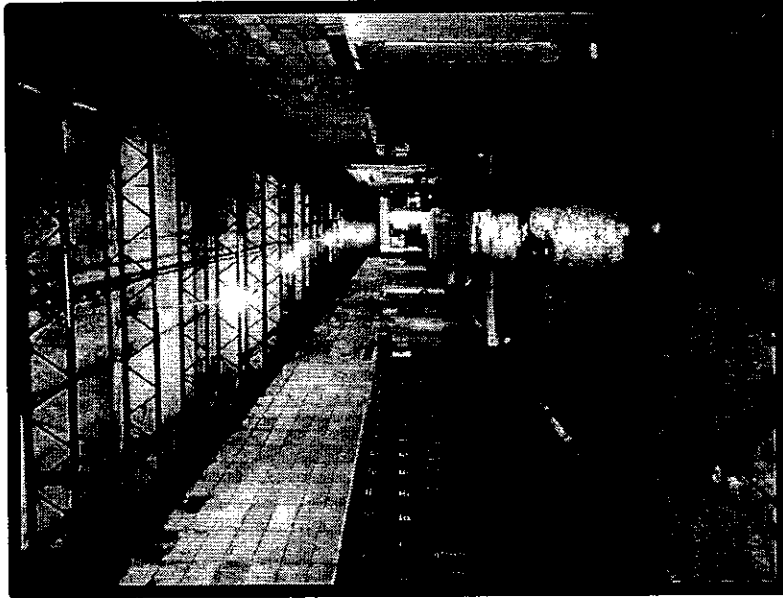
SCHOOL DISTRICT:
KEANSBURG

PROJECT TYPE:
ADDITION/
RENOVATION

SQUARE-FEET:
27,300 (addition)

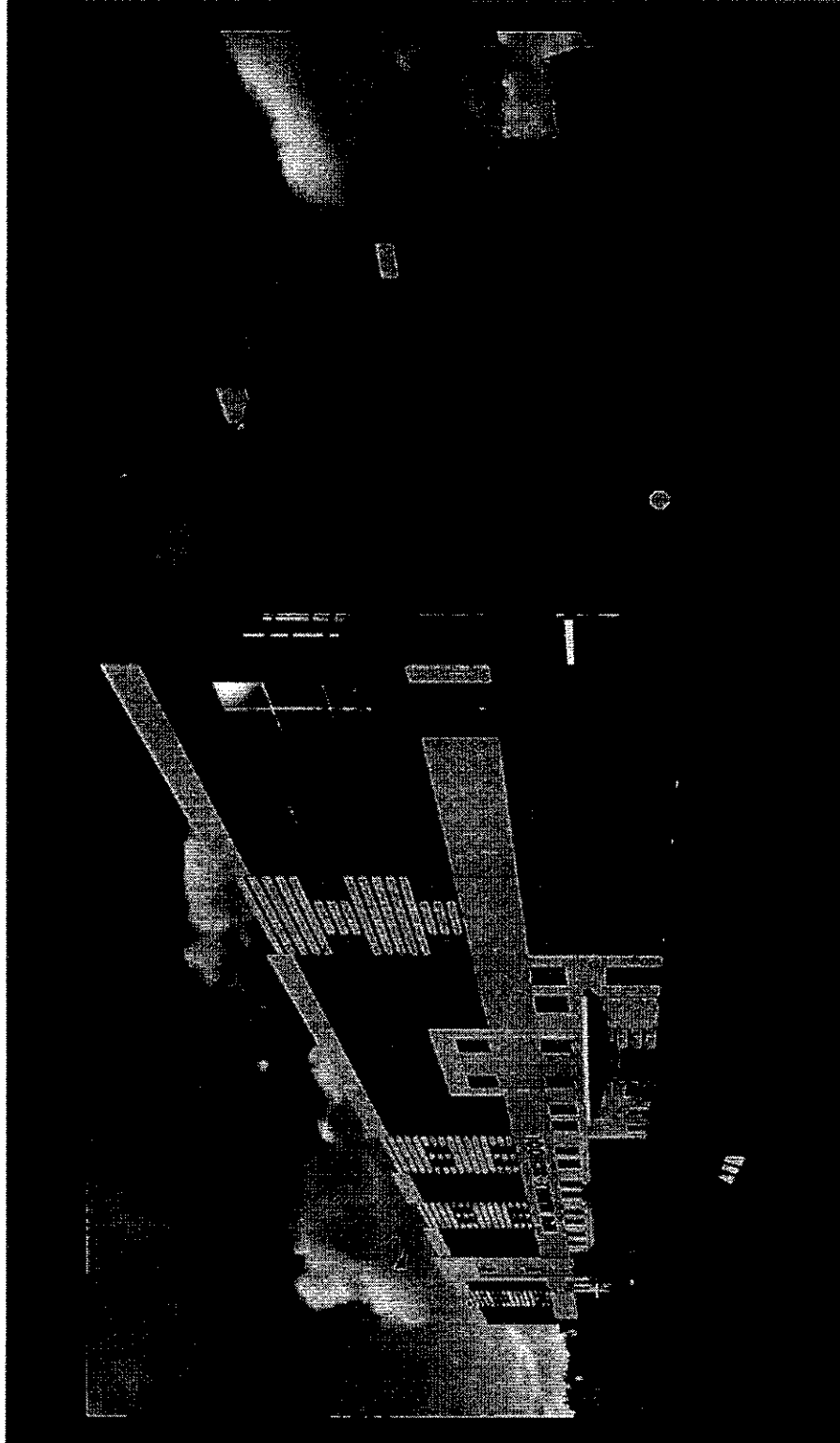
**MAX STUDENT
CAPACITY:**
318

CURRENT CONSTRUCTION PROGRESS:



18x

UNION AVENUE MIDDLE SCHOOL



SCHOOL DISTRICT:
PATERSON

PROJECT TYPE:
NEW SCHOOL

SQUARE-FEET:
163,000

**MAX STUDENT
CAPACITY:**
1,107

CURRENT CONSTRUCTION PROGRESS:



20x