



The Heart of Academic Medicine

[Explore Our Programs\(/education\)](#)

[Apply Now\(/education/admissions\)](#)

[In the News\(/news\)](#)

Make Your Impact Today

Every day, the Rutgers community works to improve the human condition. But we can't do it alone.

[Give Now\(https://give.rutgersfoundation.org/rwjms/\)](https://give.rutgersfoundation.org/rwjms/)

[Notice of Privacy Incident \(/sites/default/files/2024-04/RWJMS-DLP-Mailbox-Incident-Substitute-Website-Notice-4-1-24.pdf\)](/sites/default/files/2024-04/RWJMS-DLP-Mailbox-Incident-Substitute-Website-Notice-4-1-24.pdf)

Through specialized training, patient-centered care, and an innovative curriculum, Robert Wood Johnson Medical School prepares students to become resilient, adaptable physicians who value lifelong learning and provide high-value, ethical, and appropriate treatment in an ever-changing health care system.

97%

Match Rate

2024

5

Dual-degree programs

2,500+

Clinical and basic science faculty

49

Graduate medical education programs



RUTGERS HEALTH
Robert Wood Johnson
Medical School

Empowering Tomorrow's Healers Today

As one of the nation's leading comprehensive medical schools, Robert Wood Johnson Medical School is committed to advancing education, research, health care delivery, and the well-being of our communities.

Exceptional Education

[\(/education\)](#)

Innovative Research

[\(/research\)](#)

Leading-Edge Health Care

[\(/patient-care\)](#)

Community Impact

[\(/community-global-health\)](#)

Charting Your Path

From the White Coat Ceremony to Match Day, Robert Wood Johnson Medical School is where you can explore diverse and enriching opportunities to begin your journey in the world of health care, through community experiences, hands-on research, specialty and fellowship training, and much more.

Explore the MD program [\(/education/md\)](#)

Discover research training opportunities [\(/research/training\)](#)

Find residencies and fellowships [\(/education/gme/residencies-fellowships\)](#)

Continue your medical education [\(https://cme.rwjms.rutgers.edu/\)](https://cme.rwjms.rutgers.edu/)

Driving Us Forward



(/about/inclusion-diversity)

Committed to Diversity (/about/inclusion-diversity)

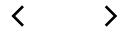
We strive to create an environment where everyone is valued and empowered as tomorrow's physicians learn not only to be competent and compassionate but also culturally sensitive and reflective of the diverse society they serve.



(/about/helix)

Breaking New Ground (/about/helix)

Our new medical school building at the HELIX will take our students to greater heights with state-of-the-art education spaces, opportunities for collaboration and innovation, and access to clinical facilities, all right in the heart of New Brunswick.



Advances in Parkinson's Disease

A new video spotlights the APDA Center for Advanced Research at Robert Wood Johnson Medical School -- one of only nine in the country! Under the leadership of Dr. M. Maral Mouradian, distinguished professor of neurology and William Dow Lovett Endowed Chair for Parkinson's Research, the center and its researchers have more than 20 active studies under way, with 40+ patents worldwide.

Watch and learn more about the work the center is doing to target the causes of Parkinson's disease and bring a cure closer to reality.

Watch Full Video (<https://vimeo.com/1055815459?share=copy>)

Medical School News



The Future Rutgers School of Medicine Releases Mission, Vision and Values Statement Focused on Advancing Health Equity (</news/future-rutgers-school-medicine-releases-mission-vision-values-statement-focused-advancing>)



Education (/news/categories/education)

RUTGERS HEALTH
Simulation Training: A Powerful Tool to Bridge Theory and Practice (/news/simulation-training-
 Robert Wood Johnson
 Medical School
 bridge-theory-practice)
 (L).



Research and Innovation (/news/categories/research-innovation)

Scientists Discover Potential Blood Test for Asthma Diagnosis and Severity (/news/scientists-
 discover-potential-blood-test-asthma-diagnosis-severity)

[Read More News\(/news\)](#)

Stay Connected

Be a part of our vibrant community and subscribe to *Robert Wood Johnson Medicine Magazine*. Faculty members, staff, students, alumni, and colleagues of the medical school can also stay informed with *The Weekly View* newsletter.

Explore the Magazine(<https://go.rutgers.edu/rwjmed>)

Read the Newsletter(<https://go.rutgers.edu/weeklyview>)

Upcoming Events



MAY
13

Department of Pediatrics (/events/department-pediatrics)

13th Annual Pediatrics Research Day (/event/13th-annual-pediatrics-research-day)

Tuesday, May 13, 2025, 9:00 a.m.-5:00 p.m. | Clinical Academic Building (CAB) 1302, New Brunswick

MAY
19

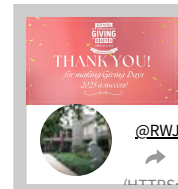
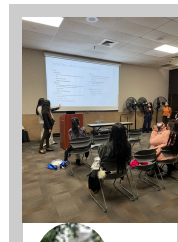
Convocation (/events/convocation)

Class of 2025 Convocation (/event/class-2025-convocation)

Monday, May 19, 2025, 7:30 p.m.-9:30 p.m. | The State Theatre, New Brunswick

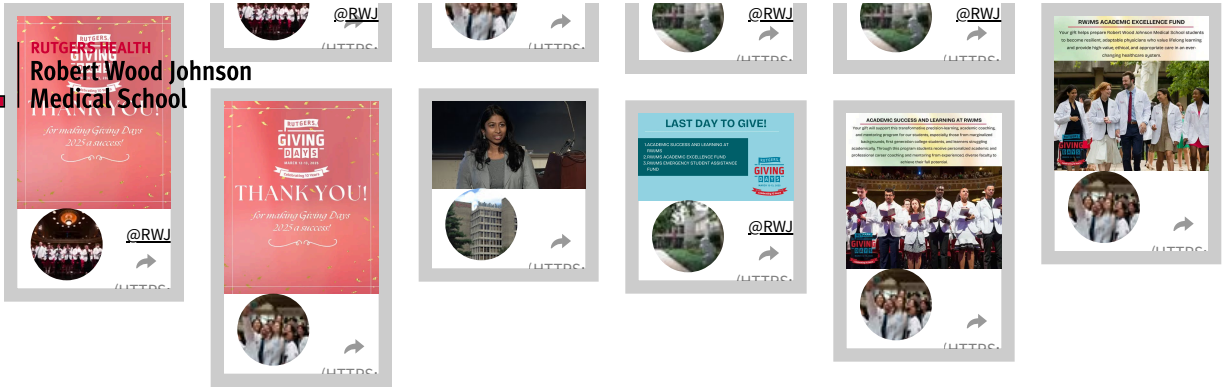
[More Events\(/events\)](#)

Follow Us





Robert Wood Johnson Medical School



Load more

Powered by Curator.io (<https://curator.io>)



(L)

[Rutgers.edu \(https://rutgers.edu/\)](https://rutgers.edu/) | [Rutgers Health \(https://rutgershealth.org/\)](https://rutgershealth.org/) | [New Brunswick \(https://newbrunswick.rutgers.edu/\)](https://newbrunswick.rutgers.edu/) | [Newark \(https://www.newark.rutgers.edu/\)](https://www.newark.rutgers.edu/) | [Camden \(https://camden.rutgers.edu/\)](https://camden.rutgers.edu/)

Academics



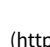
- [Admissions \(/education/admissions/\)](/education/admissions/)
- [Academic Calendar \(/education/md/academic-calendar/\)](/education/md/academic-calendar/)
- [Rutgers Health Sciences Libraries \(https://www.libraries.rutgers.edu/health-sciences/\)](https://www.libraries.rutgers.edu/health-sciences/)
- [Student Affairs \(/education/md/student-experience/\)](/education/md/student-experience/)
- [Support Our Students \(https://give.rutgersfoundation.org/rwjms/\)](https://give.rutgersfoundation.org/rwjms/)

Administration

- [Office of the Dean \(/about/dean/\)](/about/dean/)
- [Communications & Public Affairs \(/about/communications-public-affairs/\)](/about/communications-public-affairs/)
- [Information Technology \(/about/information-technology/\)](/about/information-technology/)
- [Operations & Administration \(/about/operations-administration/\)](/about/operations-administration/)
- [Alumni Association \(/alumni-association/\)](/alumni-association/)

Resources

- [Contact Us \(/about/leadership-administration/\)](/about/leadership-administration/)
- [Intranet \(NetID Required\) \(https://intranet.rwjms.rutgers.edu/\)](https://intranet.rwjms.rutgers.edu/)
- [myRutgers \(https://my.rutgers.edu/\)](https://my.rutgers.edu/)
- [MyChart Login \(https://mychart.rwjbh.org/MyChart/Authentication/Login\)](https://mychart.rwjbh.org/MyChart/Authentication/Login)
- [Resources On Demand \(Room Scheduling\) \(https://rod.rwjms.rutgers.edu/\)](https://rod.rwjms.rutgers.edu/)
- [Maintenance Request Form \(Facility Services\) \(https://apps.ufcp.rutgers.edu/CR/Login?ReturnUrl=/cr\)](https://apps.ufcp.rutgers.edu/CR/Login?ReturnUrl=/cr)

<https://www.facebook.com/RWJMedicalSchool>

<https://x.com/RWJMS>

<https://www.youtube.com/watch?v=h67XvXidT>


Rutgers is an equal access/equal opportunity institution. Individuals with disabilities are encouraged to direct suggestions, comments, or complaints concerning any accessibility issues with Rutgers websites to accessibility@rutgers.edu (<mailto:accessibility@rutgers.edu>) or complete the [Report Accessibility Barrier / Provide Feedback \(https://it.rutgers.edu/it-accessibility-initiative/barrierform/\)](https://it.rutgers.edu/it-accessibility-initiative/barrierform/) form.

