



# State of New Jersey

2013-14

19-2300-050

## OVERVIEW

HUNTERDON

HUNTERDON CENTRAL REG

GRADE SPAN 09-12

HUNTERDON CENTRAL REGIONAL HIGH SCHOOL

84 ROUTE 31

FLEMINGTON, NJ 08822-1239

This school's academic performance **is very high when compared** to schools across the state. Additionally, its academic performance **is very high when compared** to its peers. This school's college and career readiness **is high when compared** to schools across the state. Additionally, its college and career readiness **is about average when compared** to its peers. This school's graduation and post-secondary performance **is about average when compared** to schools across the state. Additionally, its graduation and post-secondary readiness **significantly lags in comparison** to its peers.

Performance Areas	Peer Percentile	Statewide Percentile	Percent of Targets Met
Academic Achievement	86	84	100%
College & Career Readiness	47	68	100%
Graduation and Post-Secondary	18	50	100%

### Improvement Status

N/A

### Rationale

N/A

**Very High Performance** is defined as being **equal to or above the 80th percentile**.

**High Performance** is defined as being **between the 60th and 79.9th percentiles**.

**Average Performance** is defined as being **between the 40th and 59.9th percentiles**.

**Lagging Performance** is defined as being **between the 20th and 39.9th percentiles**.

**Significantly Lagging Performance** is defined as being **equal to or below the 19.9th percentile**.

**Peer Schools** are schools that have similar grade levels and students with similar demographic characteristics, such as the percentage of students qualifying for Free/Reduced Lunch, Limited English Proficiency programs or Special Education programs.

### Academic Achievement

This school outperforms **84%** of schools statewide as noted by its statewide percentile and **86%** of schools educating students with similar demographic characteristics as noted in its peer school percentile in the performance area of Academic Achievement. Additionally, this school is meeting **100%** of its performance targets in the area of Academic Achievement.



Academic Achievement measures the content knowledge students have in language arts literacy and math. For high schools, this includes measures of the school's proficiency rate on both the Language Arts Literacy and Math sections of the New Jersey High School Proficiency Assessment (HSPA). A proficiency rate is calculated by summing the count of students who scored either proficient or advanced proficient on the assessment and dividing by the count of valid test scores.

### College and Career Readiness

This school outperforms **68%** of schools statewide as noted by its statewide percentile and **47%** of schools educating students with similar demographic characteristics as noted in its peer school percentile in the performance area of College and Career Readiness. Additionally, this school is meeting **100%** of its performance targets in the area of College and Career Readiness.



College and Career Readiness measures the degree to which students are demonstrating behaviors that are indicative of future attendance and/or success in college and careers. For high schools, this includes measures of participation in college readiness tests such as the SAT, ACT or PSAT and in rigorous coursework as defined by participation in AP or IB courses in English, math, social studies and science.

### Graduation and Post-Secondary

This school outperforms **50%** of schools statewide as noted by its statewide percentile and **18%** of schools educating students with similar demographic characteristics as noted in its peer school percentile in the performance area of Graduation and Post-Secondary. Additionally, this school is meeting **100%** of its performance targets in the area of Graduation and Post-Secondary.



Graduation and Postsecondary measures the rate at which students who begin high school four years earlier graduate within four years. Also included is a measure of the rate at which students in a particular school drop out of school.

### DEMOGRAPHIC INFORMATION

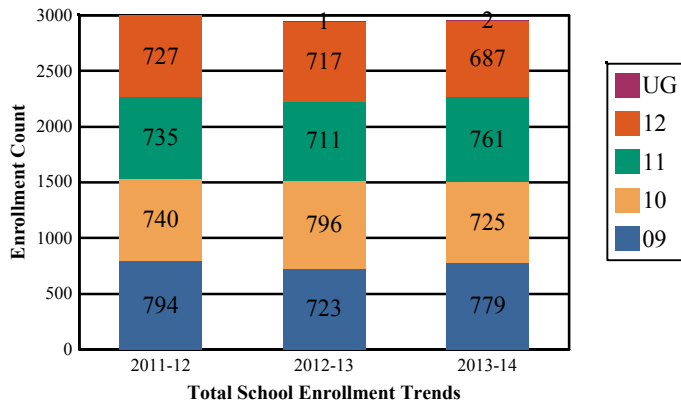
HUNTERDON

HUNTERDON CENTRAL REG

GRADE SPAN 09-12

#### Enrollment by Grade

This graph presents the count of students who were 'on roll' by grade in October of each school year.



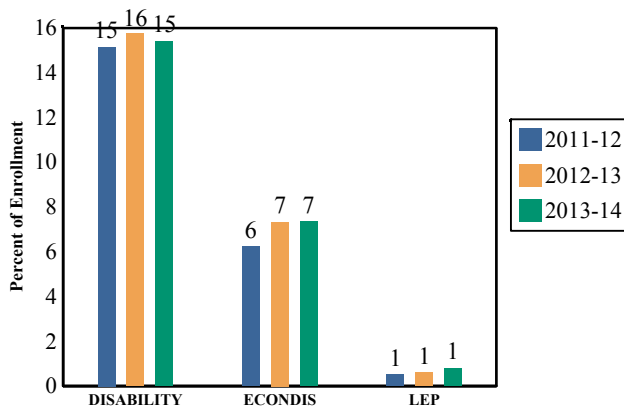
Total School Enrollment Trends

Note: "UG" represents the count of students who are 'on roll' in this school but who are educated in ungraded classrooms, meaning that the classrooms may contain students from multiple grade levels.

#### Total School Enrollment

2011-12	2,996
2012-13	2,946
2013-14	2,954

#### Enrollment Trends by Program Participation



#### Current Year Enrollment by Program Participation

2013-2014	Count of Students	% of Enrollment
Students with Disability	456	15%
Economically Disadvantaged Students	218	7.4%
Limited English Proficient Students	24	0.8%

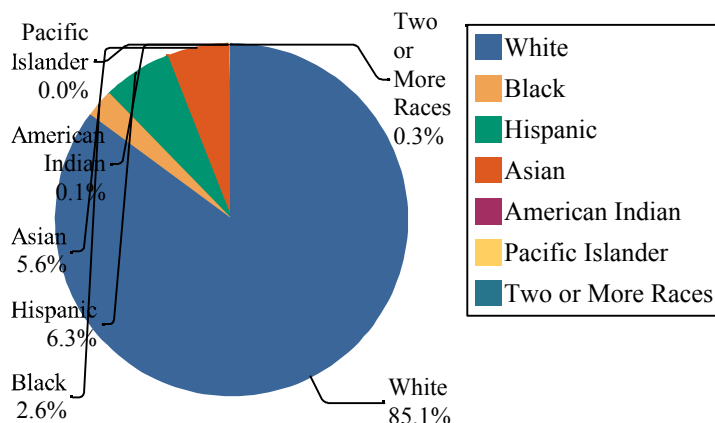
#### Language Diversity

This table presents the percentage of students who primarily speak each language in their home.

2013-14	Percent
English	94.3%
Spanish	3.0%
Gujarati	0.5%
Chinese	0.4%
Arabic	0.4%
Russian	0.2%
Other	1.3%

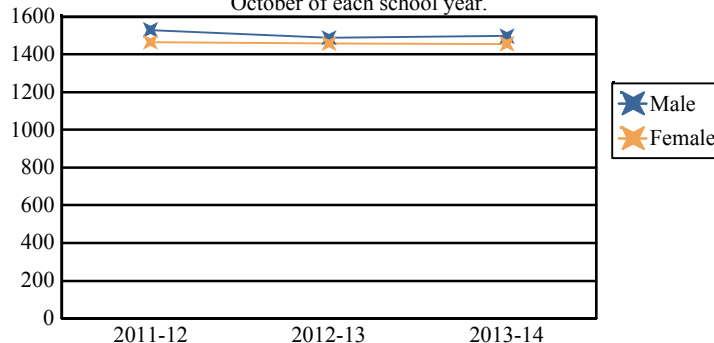
#### Enrollment by Ethnic/Racial Subgroup

This graph presents the percentages of enrollment for each subgroup defined by the No Child Left Behind Act of 2001



#### Enrollment by Gender

This graph presents the count of students by gender who were 'on roll' in October of each school year.



	Male	Female
2011-12	1,531	1,465
2012-13	1,489	1,458
2013-14	1,497	1,457



# State of New Jersey

2013-14

19-2300-050

## ACADEMIC ACHIEVEMENT

HUNTERDON

HUNTERDON CENTRAL REGIONAL HIGH SCHOOL

84 ROUTE 31

HUNTERDON CENTRAL REG

GRADE SPAN 09-12

FLEMINGTON, NJ 08822-1239

Academic Achievement measures the content knowledge students have in Language Arts Literacy and Math. In high schools, this includes the outcomes of the New Jersey High School Proficiency Assessment (HSPA). The first column - Schoolwide Performance - in the table below includes measures of the total schoolwide proficiency rate in both Language Arts Literacy and Math across multiple administrations of the assessment. The second column - Peer School Percentile - indicates where the school's proficiency rate compares to its group of peer schools. For example, a school that has a peer school percentile of 65 has a proficiency rate that is higher than 65% of its peer schools. The third column - Statewide Percentile - indicates where the school's proficiency rate compares to schools across the state. For example, a school that has a statewide percentile of 30 has a proficiency rate that is higher than 30% of all schools with HSPA scores statewide. The last column - Percent of Targets Met - presents the percentage of progress targets met as defined by the NJDOE's NCLB waiver.

The Summary row presents the averages of the peer school percentiles, the average of statewide percentiles and the percentage of statewide targets met.

Academic Achievement Indicators	Schoolwide Performance	Peer Percentile	State Percentile	Percent of Targets Met
HSPA Language Arts Proficiency and above	99%	84	83	100%
HSPA Math Proficiency and above	95%	87	85	100%
<b>SUMMARY - Academic Achievement</b>		86	84	100%

### NCLB Progress Targets - Language Arts Literacy

This table presents the Progress Targets as uniquely calculated for each subgroup in each school under NJDOE's NCLB waiver. The methodology - as defined by the United States Department of Education - is calculated so that each subgroup will halve the gap between their 2011 proficiency rate and 100% proficiency by 2017.

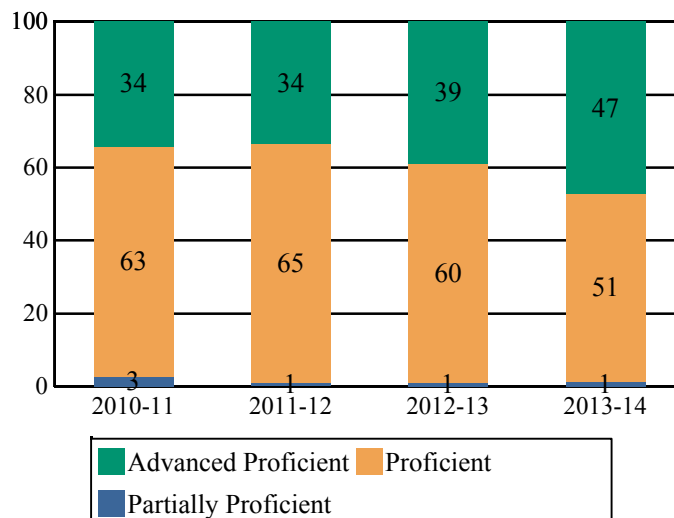
Subgroups	Total Valid Scores	Pass Rate	Target	Met Target?
Schoolwide	718	98.6	90	YES
White	618	98.8	90	YES
Black	-	-		--
Hispanic	41	95.1	85.1	YES
American Indian	-	-		--
Asian	38	100	90	YES
Two or More Races	-	-		--
Students with Disability	122	94.2	90	YES
Limited English Proficient Students	-	-		--
Economically Disadvantaged Students	48	95.8	83.5	YES

YES\* = Met Progress Target (Confidence Interval Applied)

Data is presented for subgroups when the count is high enough under NCLB suppression rules.

### Proficiency Trends - Language Arts Literacy

This graph presents the percentage of students who scored in the Advanced Proficient, Proficient and Partially Proficient categories of the statewide Language Arts Literacy assessment over the prior four years.



# State of New Jersey

2013-14

19-2300-050

HUNTERDON CENTRAL REGIONAL HIGH SCHOOL

84 ROUTE 31

FLEMINGTON, NJ 08822-1239

## ACADEMIC ACHIEVEMENT

HUNTERDON

HUNTERDON CENTRAL REG

GRADE SPAN 09-12

### NCLB Progress Targets - Math

This table presents the Progress Targets as uniquely calculated for each subgroup in each school under NJDOE's NCLB waiver. The methodology - as defined by the United States Department of Education - is calculated so that each subgroup will halve the gap between their 2011 proficiency rate and 100% proficiency by 2017.

Subgroups	Total Valid Scores	Pass Rate	Target	Met Target?
Schoolwide	718	95.1	90	YES
White	618	96.1	90	YES
Black	-	-		--
Hispanic	41	80.5	74.4	YES
American Indian	-	-		--
Asian	38	100	90	YES
Two or More Races	-	-		--
Students with Disability	122	81.1	82.5	YES*
Limited English Proficient Students	-	-		--
Economically Disadvantaged Students	48	77.1	75	YES

YES\* = Met Progress Target(Confidence Interval Applied)

Data is presented for subgroups when the count is high enough under NCLB suppression rules.

### Proficiency Outcomes - Biology

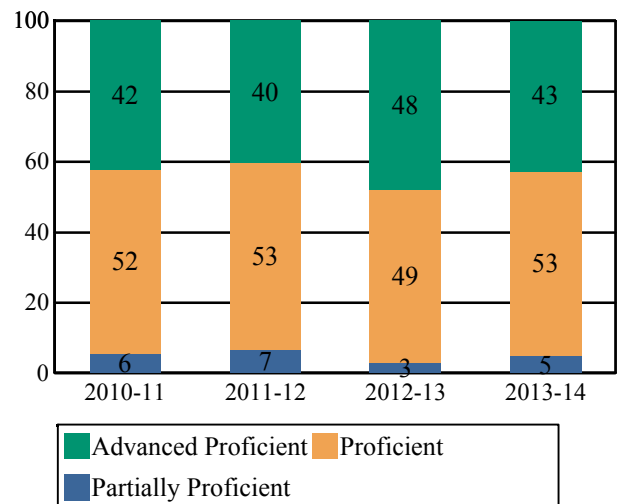
This table presents the percentage of students who scored in the Advanced Proficient, Proficient and Partially Proficient categories of the New Jersey Biology Competency Test (NJBCT) in the latest school year.

Subgroups	Advanced	Proficient	Partially Proficient
Schoolwide	27%	57%	16%
White	27%	59%	14%
Black	-	-	-
Hispanic	20%	48%	32%
American Indian	-	-	-
Asian	40%	47%	13%
Two or More Races	-	-	-
Students with Disability	7%	43%	50%
Limited English Proficient Students	-	-	-
Economically Disdvantaged Students	6%	57%	36%

Data is presented for subgroups when the count is high enough under NCLB suppression rules.

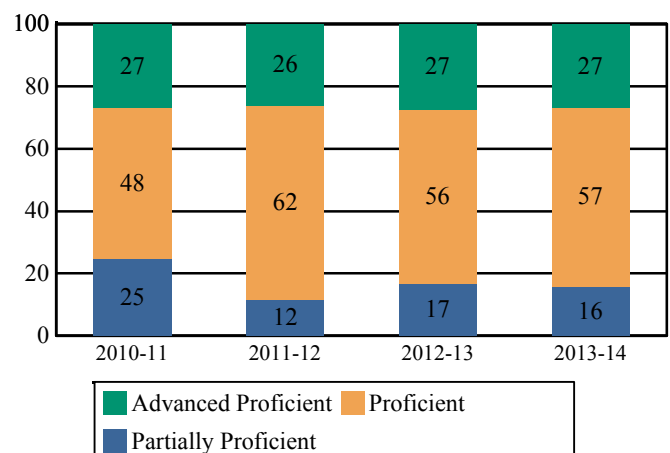
### Proficiency Trends - Math

This graph presents the percentage of students who scored in the Advanced Proficient, Proficient and Partially Proficient categories of the statewide Math assessment over the prior four years.



### Proficiency Trends - Biology

This graph presents the percentage of students who scored in the Advanced Proficient, Proficient, and Partially Proficient categories of the Biology Competency Test over the last two years.



# State of New Jersey

2013-14

19-2300-050

## COLLEGE AND CAREER READINESS

HUNTERDON

HUNTERDON CENTRAL REGIONAL HIGH SCHOOL

84 ROUTE 31

HUNTERDON CENTRAL REG

GRADE SPAN 09-12

FLEMINGTON, NJ 08822-1239

Students in high schools begin to demonstrate college readiness behaviors long before they actually graduate from high school. Among those behaviors are taking college entrance exams and challenging themselves with rigorous course work. The table below presents five such indicators: the percentage of students enrolled in the 12th grade who took the SAT or ACT, the percentage of 10th and 11th graders who took the PSAT, the percentage of students who scored above the SAT benchmark of 1550, the percentage of 11th and 12th graders who took at least one AP or IB test in English, math, social studies or science, and the percentage of those AP or IB tests that were scored a 3 or higher.

The first column - Schoolwide Performance - represents the outcomes for these particular indicators in the school. The second column - Peer School Percentile - indicates how the school's performance compares to its group of peer schools. For example, a school whose peer school percentile is 65 in SAT participation has a higher SAT Participation than 65% of its peer group. The third column - Statewide Percentile - indicates how the school's performance compares to schools across the state. The fourth column - Statewide Target - provides the statewide targets for each of these indicators. The last column - Met Target? - indicates whether the School Performance met or exceeded the statewide target.

The Summary row presents the averages of the peer school percentiles, the average of statewide percentiles and the percentage of statewide targets met.

College and Career Readiness Indicators	Schoolwide Performance	Peer Percentile	Statewide Percentile	Statewide Target	Met Target?
Percent of Students Participating in SAT or ACT	90%	48	67	80%	YES
Percent of Students Participating in PSAT or PLAN	67%	26	42	60%	YES
Percent of Students Scoring Above 1550 on SAT	64%	65	82	40%	YES
Percent of Students Taking at least one AP Test or IB Test in English, Math, Social Studies or Science	36%	68	83	35%	YES
Percent of AP Tests $\geq 3$ or IB Test $\geq 4$ in English, Math, Social Studies or Science	76%	26	66	75%	YES
Summary		47	68		100%

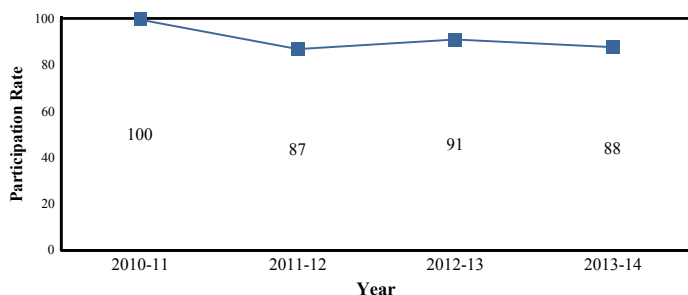
### College Readiness Test Participation

The first column of the table below presents the percentage of students enrolled in the 12th grade who took the SAT or ACT and the percentage of students enrolled in 10th and 11th grade who took the PSAT. The second column provides the average across the school's peer group for these two metrics.

2013-14 Percent of Students	School	Peer Avg.	State Avg.
Participating in SAT	87.8%	85.9%	76.2%
Participating in ACT	38.1%		22.5%
Participating in PSAT or PLAN	67.2%	82.6%	75.0%

### Participation Trends - SAT Testing

This graph presents the participation rate in the SAT over the last four years.



### AP/IB Participation - 'Unique' Students

The table below presents the proportion of 'unique' students enrolled in at least 11th and 12th grade i.e., each student is counted once regardless of how many AP or IB courses he/she may take. The table also presents the proportion of how many 'unique' students took at least one AP or IB test to the school's enrollment in 11th and 12th grade.

2013-14 Percent of Students Taking	School	Peer Avg.	State Avg.
One or More Course	50.2%	45.9%	34.2%
One or More Test	46.0%	39.3%	28.4%
At least one AP or IB Test in English, Math, Social Studies or Science	35.9%	32.3%	18.9%

Note: Students who are enrolled in AP/IB coursework or take AP/IB tests in grades other than 11th and 12th are included in the numerator of this calculation.

### AP /IB Test Results

This table presents the percentage of all AP/IB tests taken by students enrolled in the school that were scored AP  $\geq 3$  and scored IB  $\geq 4$ .

2013-14	School	Peer Avg.	State Avg.
Percent of AP Tests $\geq 3$ or IB Test $\geq 4$	77.6%	83.6%	74.1%
Percent of Scores in AP $\geq 3$ or IB $\geq 4$ in English, Math, Social Studies or Science	76.3%	83.5%	72.4%

# State of New Jersey

2013-14

19-2300-050

HUNTERDON CENTRAL REGIONAL HIGH SCHOOL

84 ROUTE 31

FLEMINGTON, NJ 08822-1239

## COLLEGE AND CAREER READINESS

HUNTERDON

HUNTERDON CENTRAL REG

GRADE SPAN 09-12

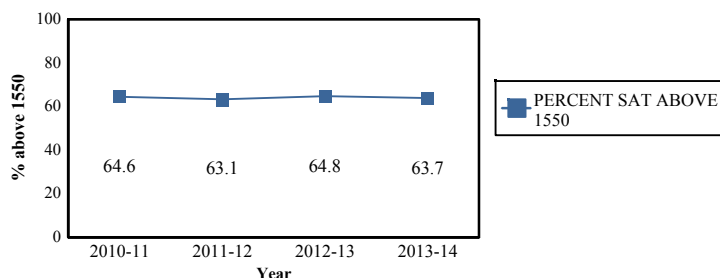
### Scholastic Assessment Test (SAT) Results

This table presents the percentage of students who achieved a composite SAT score of 1550 or higher. The SAT benchmark score of 1550 (Critical Reading, Mathematics and Writing Score combined) indicates a 65 percent likelihood of achieving a B- average or higher during the first year of college, which in turn has been found by the College Board's research to be indicative of a high likelihood of college success and completion.

2013-14	School	Peer Avg.	State Avg.
Percent of Students Scoring Above 1550 on SAT	63.7%	59.2%	44.6%

#### SAT Benchmark Trends

This chart presents the percentage of students who achieved a composite SAT score of 1550 or higher over the past four years.



### Composite SAT Score

This chart presents the average composite SAT score from the last academic year for students enrolled in this school as well as the average scores achieved in Critical Reading, Mathematics and Writing. The averages from this school's peer group are also presented.

2013-14	School	Peer Avg.	State Avg.
Composite SAT Score	1,644	1,630	1,514
Critical Reading	536	533	496
Mathematics	568	561	521
Writing	540	536	497

This chart presents the scores achieved in Critical Reading, Mathematics and Writing by the students at the 25th percentile, the 50th percentile and the 75th percentile of the school's distribution of SAT scores.

2013-14	Critical Reading	Mathematics	Writing
75th Percentile	600	640	600
50th Percentile	530	570	540
25th Percentile	470	490	470

### AP/IB Courses Offered

This table presents the count of students enrolled in each AP/IB course offered in this school in the first column. The second column presents the count of tests taken in each AP/IB course. The numbers may not match as some students do not take the test in the same year as they take the course and some students may take the course without taking the test or vice versa.

AP/IB Course Name	Students Enrolled	Students Tested
AP English Language and Composition	145	141
AP Chemistry	96	93
AP Psychology	95	72
AP Economics	86	
AP Biology	85	83
AP Statistics	77	70
AP Calculus BC	76	70
AP U.S. History	76	76
AP Physics C	53	50
AP World History	52	48
AP European History	50	45
AP Environmental Science	49	47
AP English Literature and Composition	44	41
AP Human Geography	37	36
AP Physics B	32	27
AP Calculus AB	29	33
AP Computer Science A	26	23
AP U.S. Government and Politics	25	24
AP Spanish Language	21	18
AP Studio Art-Drawing Portfolio	10	3
AP Music Theory	10	9
AP Spanish Literature	10	10
AP French Language	9	9
AP German Language	8	8





# State of New Jersey

2013-14

19-2300-050

## COLLEGE AND CAREER READINESS

HUNTERDON

HUNTERDON CENTRAL REG

GRADE SPAN 09-12

HUNTERDON CENTRAL REGIONAL HIGH SCHOOL

84 ROUTE 31

FLEMINGTON, NJ 08822-1239

### AP/IB Courses Offered

This table presents the count of students enrolled in each AP/IB course offered in this school in the first column. The second column presents the count of tests taken in each AP/IB course. The numbers may not match as some students do not take the test in the same year as they take the course and some students may take the course without taking the test or vice versa.

AP/IB Course Name	Students Enrolled	Students Tested
AP Chinese Language and Culture	4	4
AP Microeconomics		78
AP Macroeconomics		78

### Visual and Performing Arts

The chart below contains the percentage of students who were enrolled in at least one Dance, Drama/Theater, Music or Visual Arts class in this school. The last row shows the percentage of students who were enrolled in any Visual and Performing Arts classes in the school.

Percent of Students Enrolled	School	State
Dance	N/R	2.1%
Drama/Theater	3.2%	3.9%
Music	27.0%	17.5%
Visual Arts	38.8%	31.1%
Total: All Visual and Performing Arts	61.9%	49.3%

N/R - Data Not Reported

### Career in Technical Education Programs

The chart below contains percentage of students who were participants in an approved Career and Technical Education Program in this school as well as across the State of New Jersey.

Percent of Students Enrolled	School	State
Participating in CTE	2.7%	19.2%

N/R - Data Not Reported



# State of New Jersey

2013-14

19-2300-050

## GRADUATION AND POSTSECONDARY

HUNTERDON CENTRAL REGIONAL HIGH SCHOOL

HUNTERDON

84 ROUTE 31

HUNTERDON CENTRAL REG

GRADE SPAN 09-12

FLEMINGTON, NJ 08822-1239

This section of the performance report presents data about graduation, dropout and post-secondary attendance. The graduation rate is calculated according to the NCLB Cohort methodology as required by the United States Department of Education. Dropout rates are calculated from student-level data submitted by districts for students officially classified as dropouts. The dropout rate is the count of students who dropout in an academic year divided by the school's total enrollment.

The first column - Schoolwide Performance - represents the outcomes for these particular indicators in this school. The second column - Peer School Percentile - indicates how the school's performance compares to its group of peer schools. For example, a school whose peer percentile is 65 in Graduation Rate has a higher Graduation Rate than 65% of its peer group. The third column - Statewide Percentile - indicates how the school's performance compares to schools across the state. The fourth column - Statewide Target - provides the statewide targets for each of these indicators. The Statewide Target for Graduation Rate was established pursuant to NJDOE's NCLB Accountability Workbook. The last column - Met Target - indicates whether the School Performance met or exceeded the statewide target.

The Summary row presents the averages of the peer school percentile, the average of statewide percentile and the percentage of statewide targets met.

Graduation & Post Secondary Indicators	Schoolwide Performance	Peer Percentile	Statewide Percentile	Statewide Targets	Met Target
Overall Graduation Rate	95%	26	65	78%	YES
Dropout Rate	0.6%	10	35	2%	YES
SUMMARY - Graduation & Post-Secondary		18	50		100%

### Graduation Rate by Subgroup

This table presents for all NCLB-identified subgroups the "4-year Adjusted Graduation Rate." This rate calculates the percentage of students who are awarded a regular, high school diploma within four years of becoming a first-time ninth grader. The rate is adjusted to account for students who 'transfer-in' and for students who are verified as 'transfers-out'.

	School	State Target
Schoolwide	95%	78%
White	96%	
Black	-	
Hispanic	81%	
American Indian	-	
Asian	100%	
Native Hawaiian	-	
Two or More Races	-	
Students with Disability	83%	
Limited English Proficient Students	-	
Economically Disadvantaged Students	80%	

### Dropout Rate by Subgroup

This table presents for all NCLB-identified subgroups the Dropout rate. This rate calculates the percentage of students who are classified as dropouts divided by the school's total enrollment and by each subgroup enrollment.

	School	State Target
Schoolwide	.6%	2%
White	0%	
Black	1.3%	
Hispanic	2.1%	
American Indian	-	
Asian	.6%	
Native Hawaiian	-	
Two or More Races	-	
Students with Disability	1%	
Limited English Proficient Students	-	
Economically Disadvantaged Students	.4%	





# State of New Jersey

2013-14

19-2300-050

HUNTERDON CENTRAL REGIONAL HIGH SCHOOL

84 ROUTE 31

FLEMINGTON, NJ 08822-1239

## GRADUATION AND POSTSECONDARY

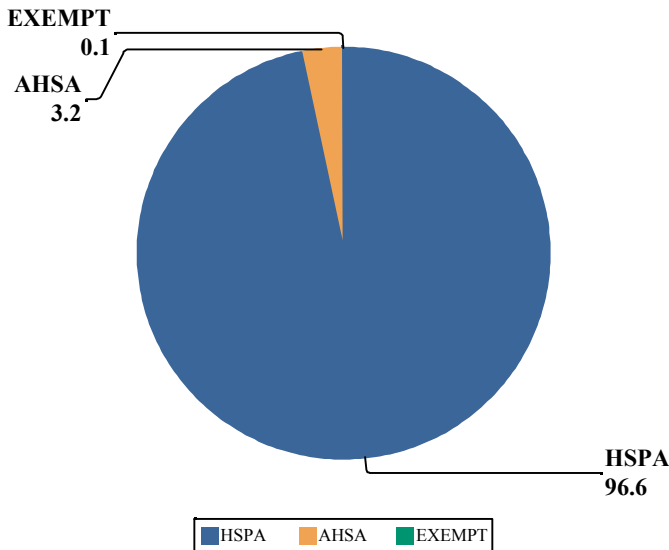
HUNTERDON

HUNTERDON CENTRAL REG

GRADE SPAN 09-12

### Graduation Pathway Rates

This chart presents the percentage of high school graduates who graduated by passing both sections of the HSPA, who were exempt from passing the HSPA, or who demonstrated proficiency through an alternative pathway such as through the Alternative High School Assessment, achievement of the 'Just Proficient Mean' or an appeal process.



### Extended Year Graduation Rate

The chart below presents the 4-year and 5-year graduation rate for the prior school year's cohort in addition to the 4-year graduation rate for last year's cohort.

Class of	4-year Rate	5-year Rate
2012	94%	95%
2013	95%	96%
2014	95%	

### Postsecondary Enrollment Rates

This chart presents the enrollment rates of this school's high school graduates, 16-months after high school graduation. The data is from the National Student Clearinghouse which reports that it collects student-level enrollment data from 95% of Institutions of Higher Education nationwide.

The last columns indicate, for the schoolwide total and each subgroup, the percentage of postsecondary enrollees that were enrolled in either a 2 year or a 4 year institution.

	Percent Enrolled	Percent in 2 Year	Percent in 4 Year
<b>Schoolwide</b>	86%	20.5%	79.5%
White	86.5%	20%	80%
Black	-	-	-
Hispanic	75%	40.7%	59.3%
Asian	90.9%	20%	80%
American Indian	-	-	-
Native Hawaiian	-	-	-
Two or More Races	-	-	-
Students with Disability	69.7%	55.1%	44.9%
Limited English Proficient Students	-	-	-
Economically Disadvantaged Students	70.6%	44.4%	55.6%



# State of New Jersey

2013-14

19-2300-050

## WITHIN SCHOOL ACHIEVEMENT GAP

HUNTERDON

HUNTERDON CENTRAL REG

GRADE SPAN 09-12

HUNTERDON CENTRAL REGIONAL HIGH SCHOOL

84 ROUTE 31

FLEMINGTON, NJ 08822-1239

This section of the performance report presents data about the achievement gap that exists within a school - as measured by the difference between the students' scale scores at the 25th and 75th percentile in the school, the so-called Interquartile Range (IQR). Taken together with an understanding of the overall and average achievement levels in the school, the IQR furthers an understanding of the range of student outcomes that exist in a school. A school gap smaller than the state gap indicates that the school's range of student outcomes is narrower than the state's while a school gap larger than the state gap indicates that the school's range of student outcomes is larger than the state's.

### High School

#### HSPA Language Arts 25th %ile vs 75th%ile

This table presents the scale scores associated with students at the bottom (0th percentile), the 25th percentile, the 50th percentile, the 75th percentile and the top (99th percentile) of school's distribution.

Percentile	School Scaled Score	State Scaled Score
99th	271	287
75th	257	250
50th	249	240
25th	241	224
0th	103	100

	Scaled Score Gap - School	Scaled Score Gap - State
25th vs 75th Gap	16	26

### High School

#### HSPA Math 25th %ile vs 75th%ile

This table presents the scale scores associated with students at the bottom (0th percentile), the 25th percentile, the 50th percentile, the 75th percentile and the top (99th percentile) of school's distribution.

Percentile	School Scaled Score	State Scaled Score
99th	272	300
75th	260	253
50th	245	232
25th	227	208
0th	155	132

	Scaled Score Gap - School	Scaled Score Gap - State
25th vs 75th Gap	33	45

# State of New Jersey

2013-14

19-2300-050

HUNTERDON CENTRAL REGIONAL HIGH SCHOOL

84 ROUTE 31

FLEMINGTON, NJ 08822-1239

## SCHOOL CLIMATE

HUNTERDON

HUNTERDON CENTRAL REG

GRADE SPAN 09-12

### Length of School Day

This table presents the amount of time a school is in session for a typical student on a normal school day.

	School
2013-14	6 Hrs. 28 Mins.

### Student Suspension Rate

This table presents the percentage of students who were suspended one or more times during the school year.

	School
2013-14	1.8%

### Instructional Time

This table presents the amount of time that a typical student is engaged in instructional activities under the supervision of a certified teacher.

2013-14	School
Full Time	5 Hrs. 20 Mins.
Shared Time	2 Hrs. 40 Mins.

### Student Expulsions

This table presents the number of students who were expelled from the school and district during the school year.

	School
2013-14	0

### Student to Staff Ratio

This table presents the count of students per faculty member or administrator in the school. All staff are counted in full-time equivalents.

2013-14	School
Faculty	13
Administrators	295

## SCHOOL PEER GROUP

## HUNTERDON CENTRAL REGIONAL HIGH SCHOOL 19-2300-050

This table presents the list of peer schools in alphabetical order by county name that was created specifically for this school (highlighted in yellow). Peer schools are drawn from across the state and represent schools that have similar grade configurations and that are educating students of similar demographic characteristics, as measured by enrollment in Free/Reduced Lunch Programs, Limited English Proficiency or Special Education Programs.

<u>COUNTY NAME</u>	<u>DISTRICT NAME</u>	<u>SCHOOL NAME</u>	<u>CDS CODE</u>	<u>GRAD ESPAN</u>	<u>FRPL</u>	<u>LEP</u>	<u>SpED</u>
BERGEN	CRESSKILL BORO	CRESSKILL HIGH SCHOOL	03-0990-040	09-12	4.2%	2.7%	11.5%
BERGEN	EMERSON BORO	EMERSON JR SR HIGH	03-1360-050	07-12	8.0%	0.4%	15.9%
BERGEN	MIDLAND PARK BORO	MIDLAND PARK JR./SR. HIGH SCHOOL	03-3170-050	07-12	6.2%	0.8%	12.9%
BERGEN	PARAMUS BORO	PARAMUS HIGH SCHOOL	03-3930-050	09-12	7.0%	0.9%	16.6%
BERGEN	TENAFLY BORO	TENAFLY HIGH SCHOOL	03-5160-050	09-12	3.5%	4.3%	13.7%
BERGEN	WESTWOOD REGIONAL	WESTWOOD JUNIOR/SENIOR HIGH SCHOOL	03-5755-050	PK-12	7.7%	0.1%	13.6%
BURLINGTON	LENAPE REGIONAL	CHEROKEE HIGH SCHOOL	05-2610-040	09-12	9.7%	0.4%	17.0%
BURLINGTON	LENAPE REGIONAL	SHAWNEE HIGH SCHOOL	05-2610-060	09-12	6.3%	0.1%	13.0%
BURLINGTON	MOORESTOWN TWP	MOORESTOWN HIGH SCHOOL	05-3360-040	09-12	9.7%	0.3%	13.5%
ESSEX	CEDAR GROVE TWP	CEDAR GROVE HIGH SCHOOL	13-0760-050	09-12	5.8%	0.7%	11.3%
HUNTERDON	DELAWARE VALLEY REGIONAL	DELAWARE VALLEY REGIONAL HIGH SCHOOL DISTRICT	19-1050-040	09-12	7.4%	0.0%	12.5%
HUNTERDON	HUNTERDON CENTRAL REG	HUNTERDON CENTRAL REGIONAL HIGH SCHOOL	19-2300-050	09-12	7.4%	0.8%	13.6%
MERCER	PRINCETON REGIONAL	PRINCETON HIGH SCHOOL	21-4255-050	09-12	8.9%	1.6%	8.3%
MERCER	W WINDSOR-PLAINSBORO REG	WEST WINDSOR-PLAINSBORO HIGH SCHOOL SOUTH	21-5715-020	09-12	4.4%	1.8%	10.0%
MONMOUTH	FREEHOLD REGIONAL	COLTS NECK HIGH SCHOOL	25-1650-010	09-12	8.4%	3.4%	13.6%
MONMOUTH	FREEHOLD REGIONAL	HOWELL HIGH SCHOOL	25-1650-060	09-12	7.8%	0.0%	12.1%
MONMOUTH	FREEHOLD REGIONAL	MANALAPAN HIGH SCHOOL	25-1650-070	09-12	7.4%	0.0%	11.9%
MONMOUTH	MIDDLETOWN TWP	MIDDLETOWN HIGH SCHOOL SOUTH	25-3160-053	09-12	8.4%	0.1%	16.5%
MONMOUTH	UPPER FREEHOLD REGIONAL	ALLENTOWN HIGH SCHOOL	25-5310-050	09-12	8.4%	0.2%	14.0%
MORRIS	MADISON BORO	MADISON HIGH SCHOOL	27-2870-050	09-12	7.2%	0.4%	14.8%
MORRIS	MORRIS HILLS REGIONAL	MORRIS KNOLLS HIGH SCHOOL	27-3370-060	09-12	9.5%	0.0%	18.8%
MORRIS	RANDOLPH TWP	RANDOLPH HIGH SCHOOL	27-4330-050	09-12	6.1%	0.6%	14.1%
MORRIS	ROXBURY TWP	ROXBURY HIGH SCHOOL	27-4560-050	09-12	7.9%	0.4%	13.5%
PASSAIC	WAYNE TWP	WAYNE HILLS HIGH SCHOOL	31-5570-055	09-12	8.1%	2.8%	11.4%
PASSAIC	WAYNE TWP	WAYNE VALLEY HIGH SCHOOL	31-5570-050	09-12	9.8%	0.0%	11.0%
SOMERSET	BRIDGEWATER-RARITAN REG	BRIDGEWATER-RARITAN REGIONAL HIGH SCHOOL	35-0555-005	09-12	8.4%	0.5%	17.2%
SOMERSET	HILLSBOROUGH TWP	HILLSBOROUGH HIGH SCHOOL	35-2170-030	09-12	7.8%	1.0%	14.1%
SOMERSET	SOMERSET HILLS REGIONAL	BERNARDS HIGH SCHOOL	35-4815-020	09-12	8.8%	1.0%	12.1%
UNION	CLARK TWP	ARTHUR L. JOHNSON HIGH SCHOOL	39-0850-005	PK-12	5.7%	1.0%	9.6%
UNION	SCOTCH PLAINS-FANWOOD REG	SCOTCH PLAINS-FANWOOD HIGH SCHOOL	39-4670-050	09-12	6.6%	0.5%	10.4%
WARREN	NORTH WARREN REGIONAL	NORTH WARREN REGIONAL SCHOOL DISTRICT	41-3675-050	07-12	8.5%	0.0%	15.2%