

DEPARTMENT OF HUMAN SERVICES  
INTER-OFFICE COMMUNICATION

974.905  
844.4  
c.2

DATE November 20, 1995

TO William Waldman  
Commissioner

FROM Karen Highsmith  
Acting Director



SUBJECT CURRENT PROGRAM STATISTICS

Attached please find CURRENT PROGRAM STATISTICS, including the FDP Statistical Summary for September 1995. Also included are explanatory notes for the various data elements.

Should you have any questions, please feel free to call me.

KH:kas:c

Attachments

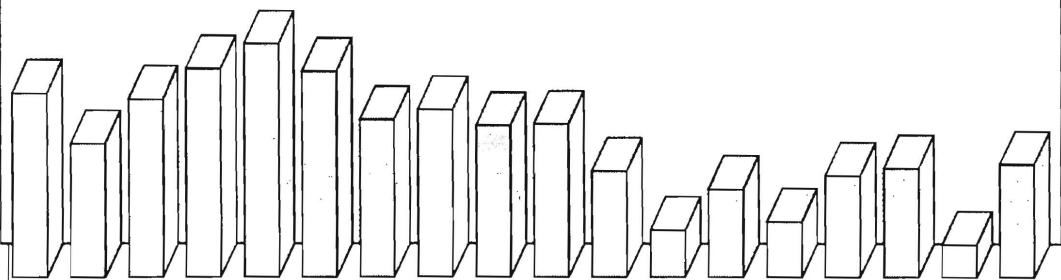
c Guhl  
Lockhart  
Grant  
Tencza

*State of New Jersey  
Department of Human Services  
Division of Family Development*

# **CURRENT PROGRAM STATISTICS**

September 1995

Karen Highsmith, Acting Director



State of New Jersey  
Department of Human Services  
Division of Family Development

**CURRENT PROGRAM STATISTICS**  
September 1995

TABLE OF CONTENTS

**Page**

<b>Highlights of Current Program Statistics.....</b>	<b>1-3</b>
--	------------

**Statistics by County, September 1995**

Table 1 AFDC .....	4
Graph 1 Current AFDC Families.....	5
Table 2 Food Stamp Program.....	6
Graph 2 Current Food Stamp Households/Persons.....	7
Table 3 Emergency Assistance Program.....	8
Graph 3 Current Families Receiving Emergency Assistance.....	9
Table 4 Family Development Program .....	10

**State Summary, 1993 - 1995**

Table 5 AFDC, September 1993 - September 1995.....	11
Graph 4 Families Receiving AFDC,9/93-9/95 .....	12
Table 6 Food Stamp Program, September 1993 - September 1995.....	13
Graph 5 Food Stamp Households,9/93-9/95.....	14
Graph 6 Food Stamp Recipients, 9/93-9/95 .....	15
Table 7 Emergency Assistance Program, September 1993 - September 1995 [Under Revision] .....	16
Graph 7 AFDC Families Receiving Emergency Assistance 9/93-9/95 [Under Revision] .....	17
Table 8 JOBS/FDP Participation Rates, by County and Statewide, April 1994 - September 1995.....	18
Graph 8 JOBS/FDP Participation Rates, 10/93-8/95 .....	19
Table 9 General Assistance, March 1993 -March 1995 .....	20
Graph 9 General Assistance Recipients 4/94 -9/95 .....	21
Table 10 Child Support and Paternity Federal Fiscal Years 1994-1995 .....	22
<b>Explanatory Notes .....</b>	<b>23-24</b>

**Supplement**

Table 11 General Assistance Recipients by County and Municipality, March 1995 .....	25
Table 12 Child Support and Paternity Cases Remaining Open, Quarter Ending September 1995.....	26

## Highlights of Current Program Statistics

### **AFDC** (Tables 1 and 5, Graphs 1 and 4)

**117,681 eligible families in New Jersey were receiving AFDC as of the end of September 1995:**

- Less than **106,000** single head of household families (Regular AFDC, C segment).
- Among two-parent families, **3300** Unemployed Parent families (F Segment) and **3300** State AFDC families (N Segment).
- **5200** Medicaid Only families.
- The largest numbers of families by county: Essex with **29,800**, Hudson with **18,700**, and Camden County with **13,600**. (52 percent of all AFDC families)
- Other counties ranged from **200** families in Hunterdon to **7,600** in Passaic County.

**There were 800 less eligible families in September 1995 than in August. The decline in 14 of the last 15 months since the May/June 1994 peak of 124,600 totalled more than 7,000.**

- There were **500** less C segment families in September 1995 than in August, and **5800** less than the peak of **111,800** in June 1994.
- F segment families declined from over **4500** in May 1994 to **3300** by September 1995.
- State AFDC (N segment) grew from about **2900** families in August 1993 to almost **3500** by June 1994, and declined by more than **200** since.
- Medicaid Only families remained near **5000** over the last two years, increased by more than **300** between February and June of 1995, and declined by about **200** since June.

### **FOOD STAMP PROGRAM** (Tables 2 and 6, Graphs 2, 5, and 6)

**At the end of September 1995, 219,914 households were participating in the Food Stamp Program:**

- **110,760** AFDC households
- **109,154** Other Low Income households.
- **48 percent** were in Essex (**55,137**), Hudson (**29,493**) and Camden (**21,774**) Counties.
- Food Stamp households included about **513,500** persons, **243,700** adults and **269,800** children.
- In seven counties (Bergen, Hunterdon, Monmouth, Morris, Somerset, Sussex, and Warren) the number of adults exceeded the number of children in Food Stamp households.



**Food Stamp households in New Jersey remained close to 215,000 families between August 1993 and February 1994, and jumped to about 222,000 families in March 1994. The number has remained between 220,000 and 222,000 since then, except for a peak in March 1995 of almost 225,000.**

- The convergence of the numbers of AFDC(FS) households and Other Low Income households continues. There were almost **116,000** AFDC(FS) households in May 1994, and less than **111,000** in September 1995. Other Low Income households increased from an average of **100,000** for all of 1993 to **109,000** for the first nine months of 1995.
- Total Recipients declined by **16,000** between March and September of 1995, and the September level of **513,500** was **3,000** below two years ago.
- The number of Recipient Adults, which peaked at **250,000** in March 1995, had declined to less than **244,000** by September. This is higher than two years ago when there were about **239,000** recipient adults.
- Recipient Children declined from almost **280,000** in March 1995 to less than **270,000** in September. This is about **13,000** less than the peak of almost **283,000** in March 1994 and **2,500** below the **277,000** level of two years ago.

## **EMERGENCY ASSISTANCE (Table 3, Graph 3)**

**At the end of September 1995 5470 eligible AFDC families were receiving Emergency Assistance (EA) in New Jersey.**

- **2502** families received Temporary Rental Assistance (TRA)
- **537** motel placements
- **437** emergency shelter placements
- All other AFDC-EA accounted for **1994** families, including either one-time benefits such as back rent, back utilities, security deposits, furnishings, and clothing and food allowance, or shared or transitional housing.
- **1478** families in Essex County received EA, including **1042** provided TRA. Middlesex had **686** EA recipient families, and Passaic had **581** (mostly "Other EA"). All other counties had between **9** and **422** EA recipient families with nine counties **under 100**.

## **JOBS/FDP PARTICIPATION RATES (Table 8, Graph 8)**

Statewide participation in JOBS/FDP in September 1995 was 25.2 percent, almost three percent above the previous three months, and close to the high of 25.7 percent in May 1995. The 1995 pattern has been similar to 1994, though an upward shift is evident. The participation rate for September 1995 is six percent higher than a year ago.

- Since April 1995, most counties have shown upward movement in participation rates. Most counties tend to show small fluctuations, with Essex, Hudson, Middlesex, Ocean, and Passaic having clear upward movement. Bergen, Burlington, Camden, Cape May, Gloucester, Mercer, Monmouth and Union have had minimal upward movement. Atlantic, and Cumberland have had large fluctuations, but maintained very high participation rates. While Sussex Warren and Salem also experienced fluctuations, their high rates have not been as sustained. Hunterdon and Somerset jumped to higher levels in late 1994 or early 1995, but fluctuated in recent months. Morris increased markedly in 1995.
- Essex reached another new high but remained between 10 and 20 percent along with Camden, Cape May and Gloucester. Hunterdon, Passaic, and Warren were between 30 and 40 percent, while Atlantic, Cumberland, Somerset and Sussex were around 50 percent. Morris exceeded 70 percent for the third month in a row. All other counties were between 20 and 30 percent. Only five counties showed lower rates in September than August.

## **GENERAL ASSISTANCE (Table 9, Graph 9)**

For the period March 1993 through March 1995 (the latest available information), the number of GA recipients peaked at about 37,400 in March 1993 and at 38,100 in March 1994. The level stayed around 35,000 from September through December 1994. January through March 1995 remained below 36,000.

- The number of employable recipients also peaked in March 1993 (25,900) and March 1994 (26,400). The level remained slightly over 23,000 from September through December 1994, increased to over 24,000 in January 1995, and remained below 24,000 in February and March.
- Unemployable GA recipients remained between 11,000 and 11,700 from March 1993 through April 1994, and hovered around 12,000 from May through November 1994. After declining to less than 11,300 by February 1995, Unemployables increased to 12,000 in March.

## **CHILD SUPPORT AND PATERNITY COLLECTIONS (Table 10)**

Total collections of the Child Support and Paternity Program grew from about \$534 million to more than \$586 million from FFY1994 to FFY1995, an increase of almost 10 percent.

- Total AFDC/Foster Care collections increased from almost \$92 million to about \$97 million, or 5.3 percent.
- Non-AFDC collections grew from \$442 million to almost \$490 million, or 10.7 percent.

New Jersey Department of Human Services  
Division of Family Development

## **TABLE 1**

### **AFDC Program**

**NUMBER OF APPLICATIONS AND TERMINATIONS DURING REPORT MONTH, AND  
NUMBER OF ELIGIBLE FAMILIES RECEIVING AFDC AT END OF REPORT MONTH**

**September 1995**

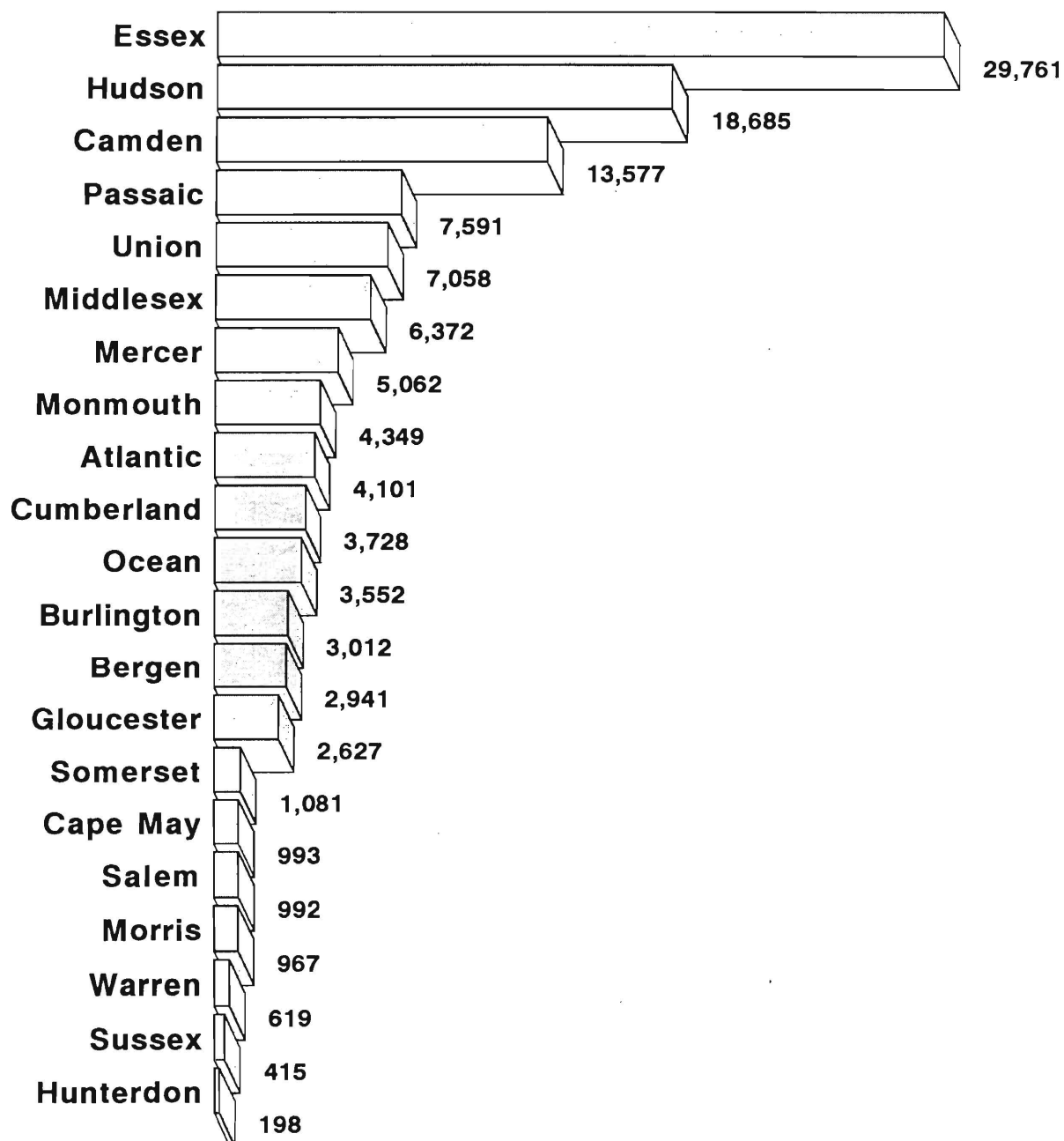
County	Applications Approved	Terminations	Regular AFDC (C Segment)	Unemployed Parents (F)	State AFDC (N)	Medicaid Only	TOTAL AFDC
Atlantic	305	384	3,746	134	75	146	<b>4,101</b>
Bergen	161	165	2,572	157	126	86	<b>2,941</b>
Burlington	199	214	2,640	100	80	192	<b>3,012</b>
Camden	829	875	11,855	569	387	766	<b>13,577</b>
Cape May	55	122	833	55	53	52	<b>993</b>
Cumberland	246	284	3,168	171	191	198	<b>3,728</b>
Essex	864	1,016	28,323	442	252	744	<b>29,761</b>
Gloucester	264	274	2,251	121	84	171	<b>2,627</b>
Hudson	603	620	16,699	361	637	988	<b>18,685</b>
Hunterdon	19	18	166	6	9	17	<b>198</b>
Mercer	474	503	4,602	83	101	276	<b>5,062</b>
Middlesex	425	421	5,266	242	315	549	<b>6,372</b>
Monmouth	209	320	3,996	101	173	79	<b>4,349</b>
Morris	55	68	857	34	33	43	<b>967</b>
Ocean	220	284	2,995	173	167	217	<b>3,552</b>
Passaic	357	384	6,972	283	279	57	<b>7,591</b>
Salem	108	103	876	19	27	70	<b>992</b>
Somerset	129	125	888	41	37	115	<b>1,081</b>
Sussex	31	38	347	16	9	43	<b>415</b>
Union	319	374	6,378	156	194	330	<b>7,058</b>
Warren	50	55	513	39	31	36	<b>619</b>
<b>NJ TOTAL</b>	<b>5,922</b>	<b>6,647</b>	<b>105,943</b>	<b>3,303</b>	<b>3,260</b>	<b>5,175</b>	<b>117,681</b>

Data Sources: Data is derived from NJ Division of Family Development's FAMIS report # FF-012.

# GRAPH 1

## Current AFDC Families September 1995, By County

---



New Jersey Department of Human Services  
Division of Family Development

**TABLE 2****FOOD STAMP Program**

**NUMBER OF ATP'S ISSUED TO HOUSEHOLDS, PERSONS, ADULTS  
AND CHILDREN AT THE END OF THE REPORT MONTH**

**September 1995**

County	HOUSEHOLDS			PERSONS				
	AFDC	Other low income	TOTAL	TOTAL	AFDC	Other low income	Adults	Children
Atlantic	3,874	4,704	8,578	18,964	12,525	6,439	9,280	9,684
Bergen	2,678	5,599	8,277	16,528	7,936	8,592	9,628	6,900
Burlington	2,706	2,961	5,667	13,051	8,192	4,859	6,394	6,657
Camden	12,785	8,989	21,774	54,765	41,654	13,111	24,497	30,268
Cape May	1,056	1,063	2,119	5,438	3,541	1,897	2,531	2,907
Cumberland	3,608	2,611	6,219	16,374	12,128	4,246	7,433	8,941
Essex	29,280	25,857	55,137	127,681	90,512	37,169	59,123	68,558
Gloucester	2,373	1,903	4,276	10,673	7,345	3,328	4,958	5,715
Hudson	17,533	11,960	29,493	71,693	53,425	18,268	32,134	39,559
Hunterdon	157	346	503	994	461	533	581	413
Mercer	4,582	4,349	8,931	19,711	14,062	5,649	9,237	10,474
Middlesex	5,694	5,832	11,526	26,107	17,096	9,011	12,810	13,297
Monmouth	4,076	6,213	10,289	22,405	12,901	9,504	11,501	10,904
Morris	841	1,850	2,691	5,443	2,536	2,907	3,124	2,319
Ocean	3,433	4,424	7,857	19,714	11,226	8,488	9,291	10,423
Passaic	7,160	9,381	16,541	38,681	23,590	15,091	18,584	20,097
Salem	916	839	1,755	4,303	2,941	1,362	1,993	2,310
Somerset	1,009	1,791	2,800	5,514	2,893	2,621	3,026	2,488
Sussex	365	650	1,015	2,356	1,109	1,247	1,242	1,114
Union	6,065	6,817	12,882	29,478	19,278	10,200	14,442	15,036
Warren	569	1,015	1,584	3,644	1,775	1,869	1,914	1,730
NJ TOTAL	110,760	109,154	219,914	513,517	347,126	166,391	243,723	269,794

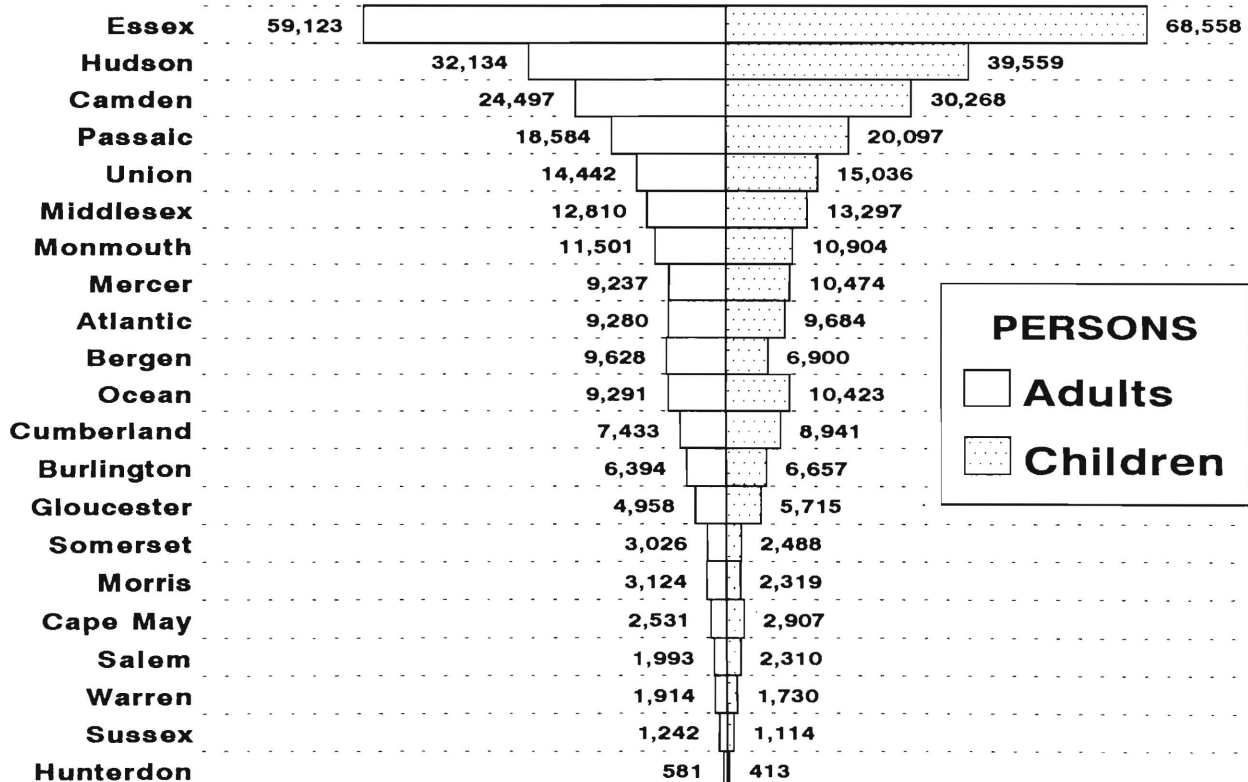
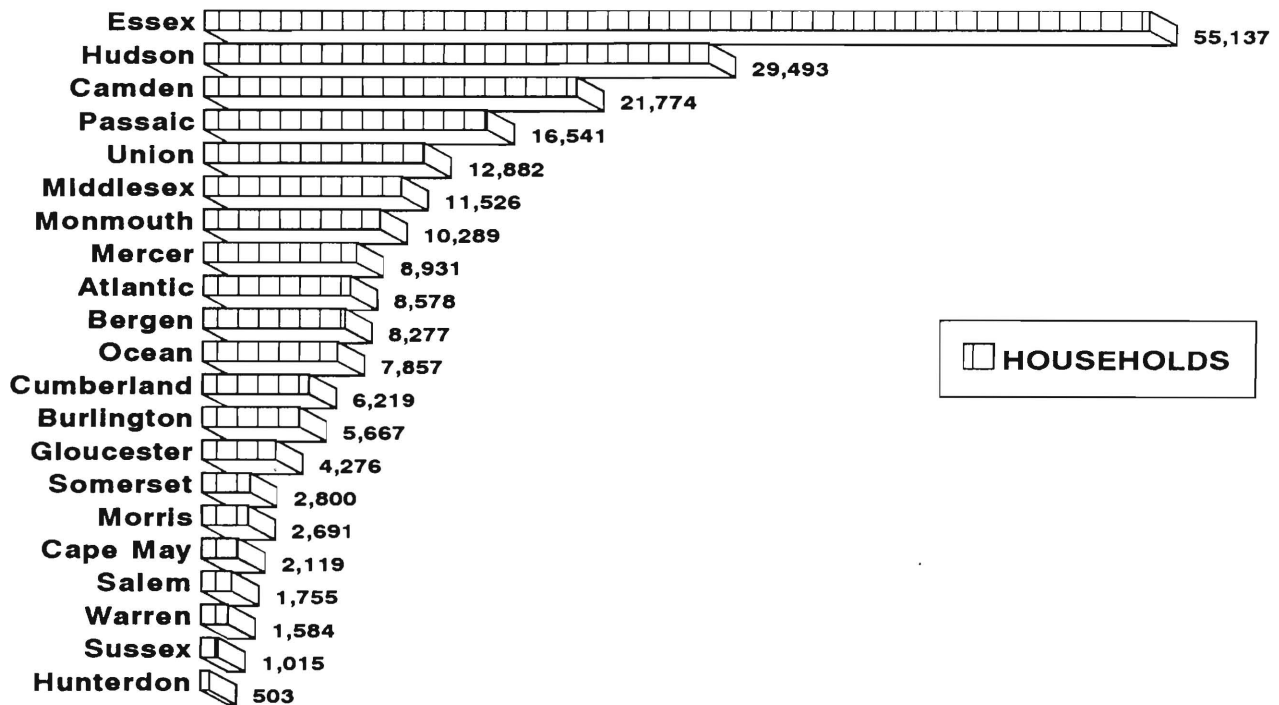
ATP - Authorization to Participate, may include some duplication

Data Sources: Data is derived from NJ Division of Family Development's FAMIS report # FB-160.

## GRAPH 2

# Food Stamp Households

### September 1995, By County



New Jersey Department of Human Services  
Division of Family Development

**TABLE 3****EMERGENCY ASSISTANCE Program for AFDC recipients**

**NUMBER OF APPLICATIONS AND TERMINATIONS DURING REPORT MONTH,  
AND ELIGIBLE FAMILIES RECEIVING EMERGENCY ASSISTANCE  
AT END OF REPORT MONTH**

**September 1995**

County	Applications Approved	Terminations	Total families receiving EA	Temporary rental assist.	Motel Housing	Emergency Shelter	Other AFDC-EA
Atlantic	142	165	<b>248</b>	127	25	23	73
Bergen	87	82	<b>422</b>	297	40	30	55
Burlington	54	8	<b>75</b>	17	2	43	13
Camden	246	231	<b>287</b>	65	7	34	181
Cape May	27	20	<b>27</b>	2	4	0	21
Cumberland	25	20	<b>24</b>	0	1	9	14
Essex	550	67	<b>1,478</b>	1,042	53	136	247
Gloucester	21	30	<b>81</b>	40	2	32	7
Hudson	51	43	<b>128</b>	29	5	21	73
Hunterdon	4	4	<b>9</b>	5	1	3	0
Mercer	106	83	<b>340</b>	94	63	1	182
Middlesex	110	245	<b>686</b>	399	29	18	240
Monmouth	76	86	<b>300</b>	141	77	4	78
Morris	6	6	<b>18</b>	0	1	11	6
Ocean	99	115	<b>296</b>	166	127	3	0
Passaic	512	333	<b>581</b>	1	15	21	544
Salem	76	8	<b>60</b>	18	22	1	19
Somerset	57	42	<b>112</b>	17	23	9	63
Sussex	18	6	<b>37</b>	7	9	12	9
Union	324	292	<b>238</b>	35	18	20	165
Warren	14	16	<b>23</b>	0	13	6	4
<b>NJ TOTAL</b>	<b>2,605</b>	<b>1,902</b>	<b>5,470</b>	<b>2,502</b>	<b>537</b>	<b>437</b>	<b>1,994</b>

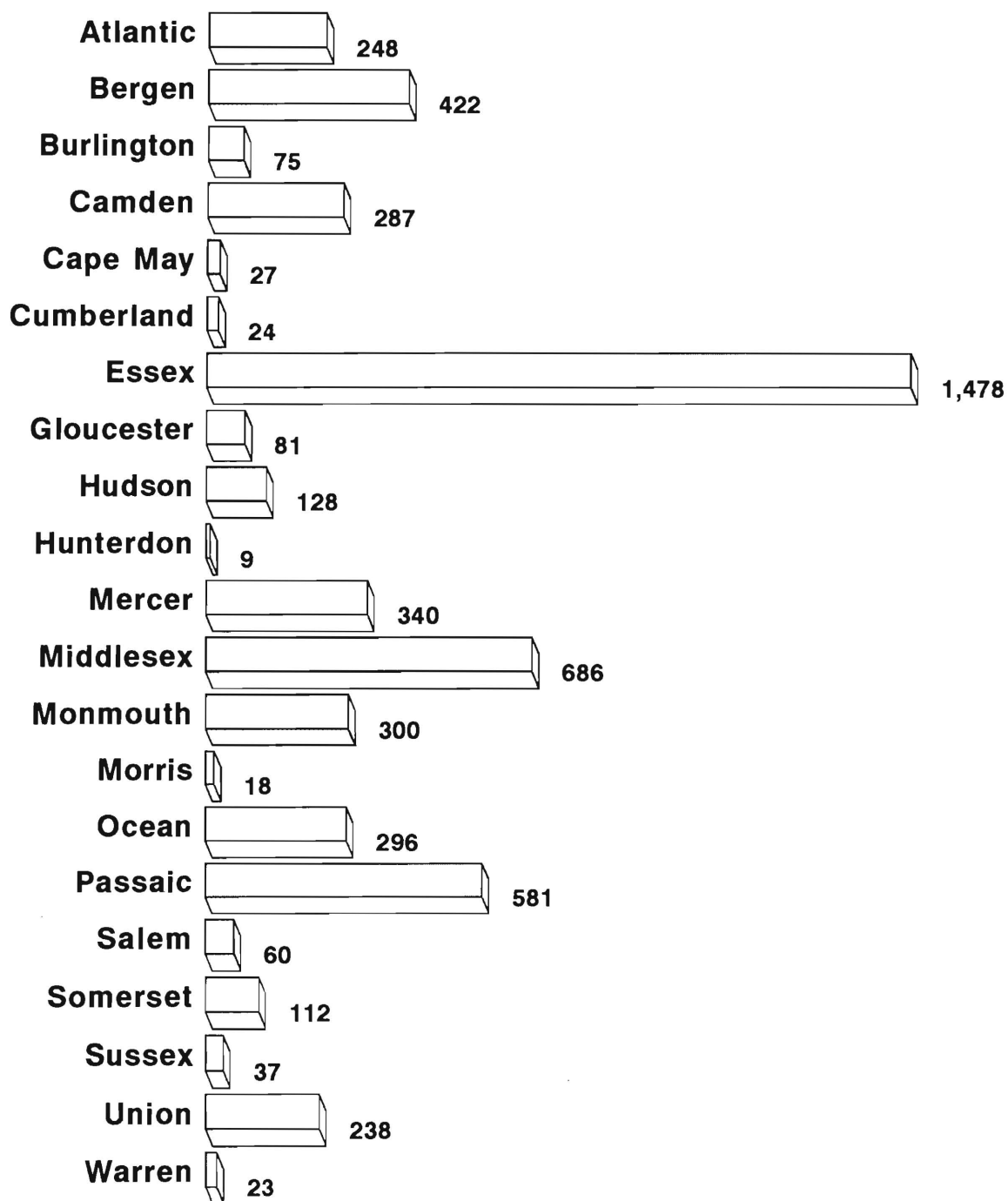
Data Sources: Data is compiled by County Welfare Agencies & reported to the  
NJ Division of Family Development on report form # PA-217.

### GRAPH 3

## Current Families Receiving Emergency Assistance

### September 1995, By County

---





NEW JERSEY DEPARTMENT OF HUMAN SERVICES  
DIVISION OF FAMILY DEVELOPMENT

**TABLE 4**  
**FAMILY DEVELOPMENT PROGRAM**  
**STATISTICAL SUMMARY**

COUNTY	SNAPSHOT OF ACTIVITY AS OF SEPTEMBER 1995				ACTIVITY FOR MONTH OF SEPTEMBER 1995					
	TOTAL NONEXMT JOBS/FDP RECI- PIENTS	EMPLOYMENT DIRECTED ACTIVITIES(1)			PARTIC IN EDAs & REC SUPPORT SERVICES		PARTIC W/ 1st C M INTV	# EMPL THIS MONTH & STILL REC AFDC	# CLSD ON FAMIS RE: EARNGS(2)	POST AFDC & REC CH CARE
		TRAIN- ING	EDUCA- TION	JOB SEARCH	TREs	CHILD CARE				
ATLANTIC	1,585	347	280	109	409	197	168	58	109	125
BERGEN	1,704	203	119	65	160	99	46	14	29	54
BURLINGTON	1,433	312	172	49	341	183	120	76	97	128
CAMDEN	8,111	455	508	46	801	366	274	89	188	234
CAPE MAY	566	36	23	11	31	8	61	14	44	5
CUMBERLAND	1,613	298	307	20	612	238	304	46	81	145
ESSEX	16,977	1,320	1,414	242	1,943	1,218	324	52	187	129
GLOUCESTER	1,187	230	147	28	340	84	88	12	41	65
HUDSON	11,969	1,083	1,476	83	1,564	810	411	63	159	180
HUNTERDON	105	9	19	5	12	11	9	5	10	11
MERCER	2,898	203	313	91	224	176	61	34	90	107
MIDDLESEX	3,658	484	279	72	325	184	266	63	99	96
MONMOUTH	2,544	262	287	82	434	222	108	55	66	152
MORRIS	450	135	67	45	78	65	50	14	21	20
OCEAN	2,047	318	197	120	190	132	283	73	105	123
PASSAIC	3,944	930	417	44	852	340	211	56	101	129
SALEM	428	72	97	7	126	64	25	9	21	56
SOMERSET	562	74	94	4	105	53	21	20	27	38
SUSSEX	244	24	60	49	33	22	17	12	24	27
UNION	3,819	349	408	128	529	209	280	31	83	106
WARREN	388	29	60	34	17	19	4	13	29	14
STATE	66,232	7,173	6,744	1,334	9,126	4,700	3,131	809	1,611	1,944

(1) – The number of participants receiving support services may occasionally exceed the number actively participating in EDAs. This can result from extended assessment or evaluation activities or, the issuance of bridge payments.

(2) – FAMIS file date 9/22/95

New Jersey Department of Human Services  
Division of Family Development

## **TABLE 5**

### **AFDC Program State Summary**

**NUMBER OF APPLICATIONS AND TERMINATIONS DURING REPORT MONTH,  
AND NUMBER OF ELIGIBLE FAMILIES RECEIVING AFDC AT END OF REPORT MONTH**

**September 1993 through September 1995**

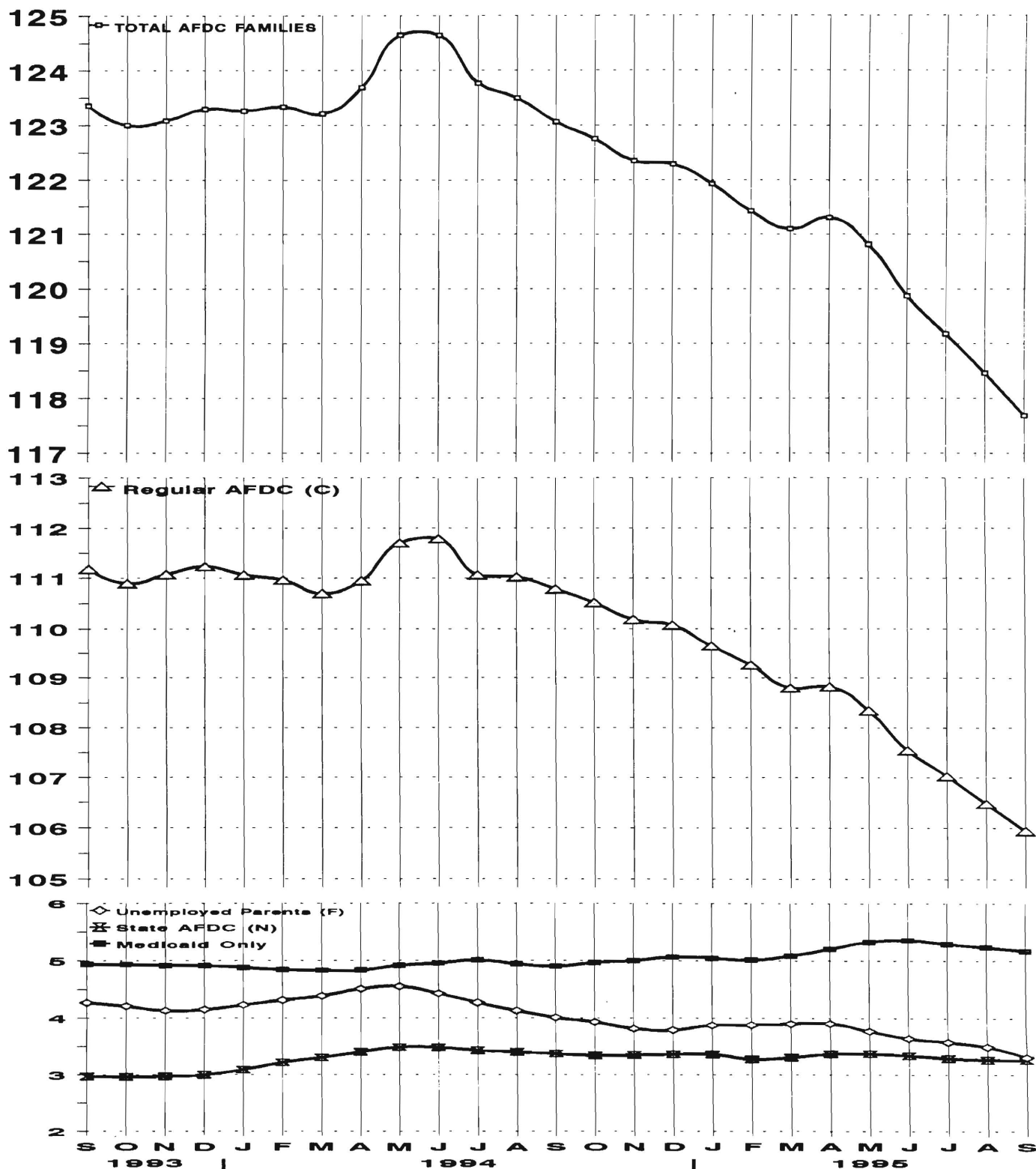
	Applications Approved	Termin- ations	Regular AFDC (C Segment)	Unemployed Parents (F)	State AFDC (N)	Medicaid Only	TOTAL AFDC
1993 Sep	5,795	5,857	111,177	4,274	2,969	4,939	123,359
Oct	5,380	5,820	110,893	4,213	2,961	4,934	123,001
Nov	6,774	6,902	111,072	4,131	2,969	4,916	123,088
Dec	5,590	5,462	111,231	4,152	2,997	4,915	123,295
AVERAGE (12 MONTHS)	5,760	5,688	110,942	4,365	2,860	5,012	123,178
1994 Jan	5,452	5,349	111,067	4,232	3,085	4,881	123,265
Feb	5,449	5,518	110,964	4,314	3,214	4,844	123,336
Mar	5,693	5,893	110,699	4,383	3,301	4,831	123,214
Apr	6,284	5,997	110,951	4,506	3,399	4,834	123,690
May	7,094	6,188	111,700	4,549	3,483	4,913	124,645
Jun	5,758	5,742	111,787	4,423	3,477	4,953	124,640
Jul	5,117	5,898	111,064	4,266	3,428	5,007	123,765
Aug	6,435	6,827	111,025	4,128	3,401	4,940	123,494
Sep	6,266	6,754	110,790	4,007	3,369	4,900	123,066
Oct	6,592	6,950	110,517	3,927	3,340	4,966	122,750
Nov	6,344	6,796	110,181	3,814	3,350	5,002	122,347
Dec	5,682	5,890	110,070	3,789	3,360	5,065	122,284
AVERAGE	6,014	6,150	110,901	4,195	3,351	4,928	123,375
1995 Jan	5,583	5,944	109,645	3,875	3,358	5,045	121,923
Feb	5,964	6,515	109,261	3,878	3,270	5,016	121,425
Mar	5,810	6,221	108,800	3,903	3,305	5,088	121,096
Apr	7,096	7,086	108,822	3,907	3,365	5,209	121,303
May	5,288	5,784	108,343	3,773	3,369	5,328	120,813
Jun	5,558	6,458	107,541	3,639	3,336	5,358	119,874
Jul	5,977	6,781	107,028	3,574	3,286	5,293	119,181
Aug	5,547	6,294	106,475	3,489	3,260	5,239	118,463
Sep	5,922	6,647	105,943	3,303	3,260	5,175	117,681
AVERAGE	5,861	6,414	107,984	3,705	3,312	5,195	120,195

Data Sources: Data is derived from NJ Division of Family Development's FAMIS report # FF-012.

# GRAPH 4

## Eligible Families Receiving AFDC

September 1993 through September 1995  
(Thousands of Families)



New Jersey Department of Human Services  
Division of Family Development

## **TABLE 6**

### **FOOD STAMP Program State Summary**

#### **NUMBER OF ATP'S ISSUED TO HOUSEHOLDS, PERSONS, ADULTS AND CHILDREN AT THE END OF THE REPORT MONTH**

**September 1993 through September 1995**

	<b>HOUSEHOLDS</b>			<b>PERSONS</b>				
	AFDC	Other low income	TOTAL	TOTAL	AFDC	Other low income	Adults	Children
1993 Sep	113,439	101,341	<b>214,780</b>	<b>516,517</b>	358,261	158,256	239,247	277,270
Oct	113,737	101,753	<b>215,490</b>	<b>517,657</b>	358,804	158,853	239,902	277,755
Nov	114,180	100,295	<b>214,475</b>	<b>519,932</b>	360,125	159,807	241,029	278,903
Dec	114,348	102,790	<b>217,138</b>	<b>521,307</b>	360,858	160,449	241,989	279,318
AVERAGE (12 MONTHS)	113,235	100,374	<b>213,609</b>	<b>515,793</b>	357,762	158,032	238,605	277,188
1994 Jan	113,984	102,590	<b>216,574</b>	<b>519,549</b>	359,422	160,127	241,575	277,974
Feb	113,804	102,843	<b>216,647</b>	<b>519,760</b>	359,227	160,533	241,993	277,767
Mar	115,730	106,160	<b>221,890</b>	<b>530,892</b>	365,132	165,760	248,219	282,673
Apr	115,661	106,454	<b>222,115</b>	<b>530,591</b>	365,241	165,350	248,331	282,260
May	115,874	106,611	<b>222,485</b>	<b>530,595</b>	364,941	165,654	248,420	282,175
Jun	115,737	106,683	<b>222,420</b>	<b>529,514</b>	364,394	165,120	248,099	281,415
Jul	115,172	105,717	<b>220,889</b>	<b>526,075</b>	362,520	163,555	246,142	279,933
Aug	114,809	106,115	<b>220,924</b>	<b>524,659</b>	361,106	163,553	246,052	278,607
Sep	114,177	105,972	<b>220,149</b>	<b>521,945</b>	358,849	163,096	244,835	277,110
Oct	114,039	106,903	<b>220,942</b>	<b>522,406</b>	358,010	164,396	245,676	276,730
Nov	114,251	107,577	<b>221,828</b>	<b>524,090</b>	358,582	165,508	246,659	277,431
Dec	114,232	107,467	<b>221,699</b>	<b>523,825</b>	358,446	165,379	246,517	277,308
AVERAGE	114,789	105,924	<b>220,714</b>	<b>525,325</b>	361,323	164,003	246,043	279,282
1995 Jan	113,691	107,493	<b>221,184</b>	<b>522,125</b>	356,763	165,362	245,837	276,288
Feb	113,830	108,421	<b>222,251</b>	<b>524,344</b>	357,419	166,925	247,107	277,237
Mar	114,339	110,279	<b>224,618</b>	<b>529,456</b>	359,404	170,052	249,994	279,462
Apr	113,588	108,991	<b>222,579</b>	<b>524,102</b>	356,717	167,385	247,367	276,735
May	113,125	109,171	<b>222,296</b>	<b>522,173</b>	355,099	167,074	246,949	275,224
Jun	112,827	109,198	<b>222,025</b>	<b>521,084</b>	354,211	166,873	246,557	274,527
Jul	111,635	107,978	<b>219,613</b>	<b>515,478</b>	350,378	165,100	243,727	271,751
Aug	111,415	109,603	<b>221,018</b>	<b>516,618</b>	349,372	167,246	245,110	271,508
Sep	110,760	109,154	<b>219,914</b>	<b>513,517</b>	347,126	166,391	243,723	269,794
AVERAGE	112,801	108,921	<b>221,722</b>	<b>520,989</b>	354,054	166,934	246,263	274,725

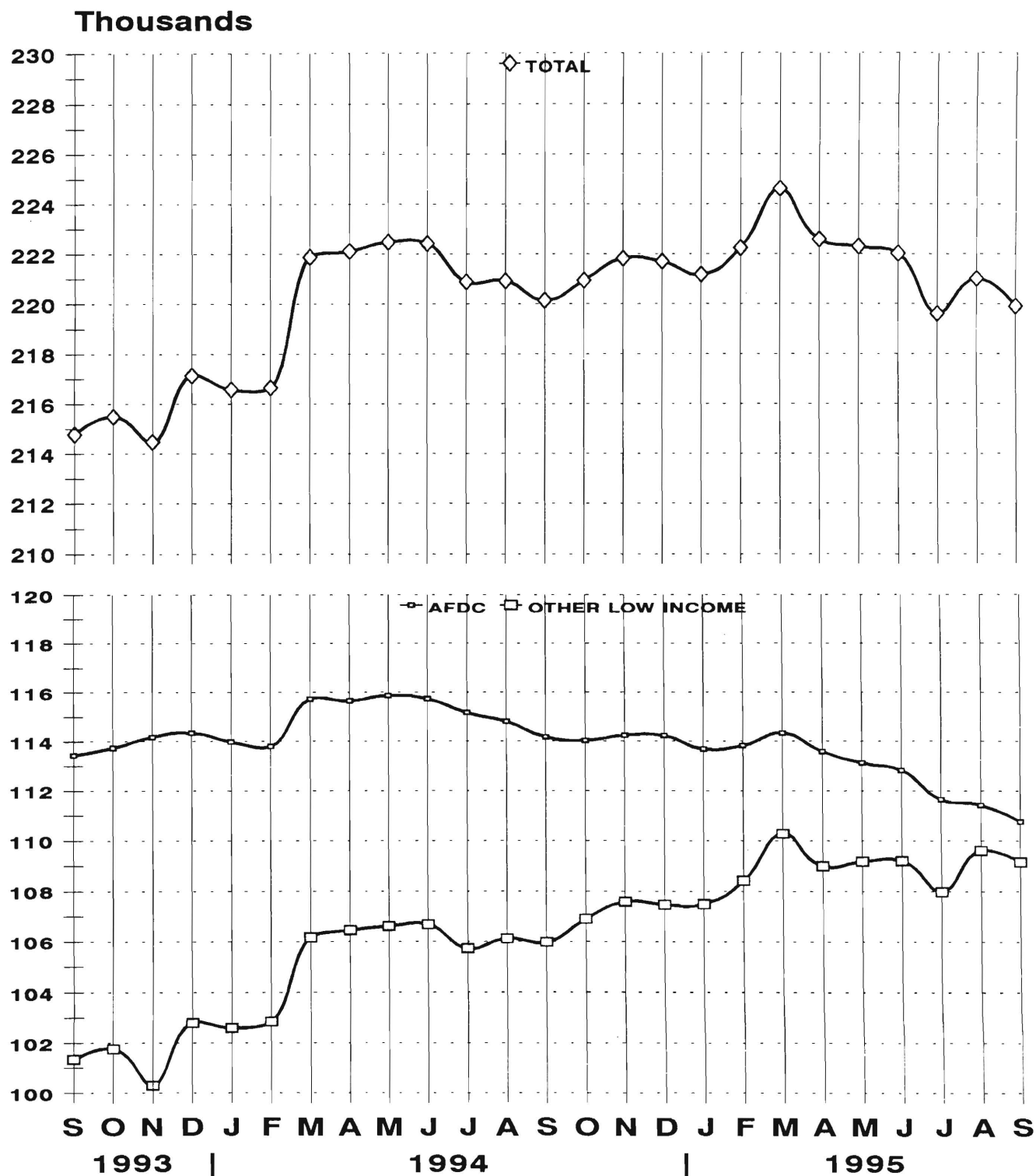
ATP - Authorization to Participate

Data Sources: Data is derived from NJ Division of Family Development's FAMIS report # FB-160.

# GRAPH 5

## Food Stamp Households

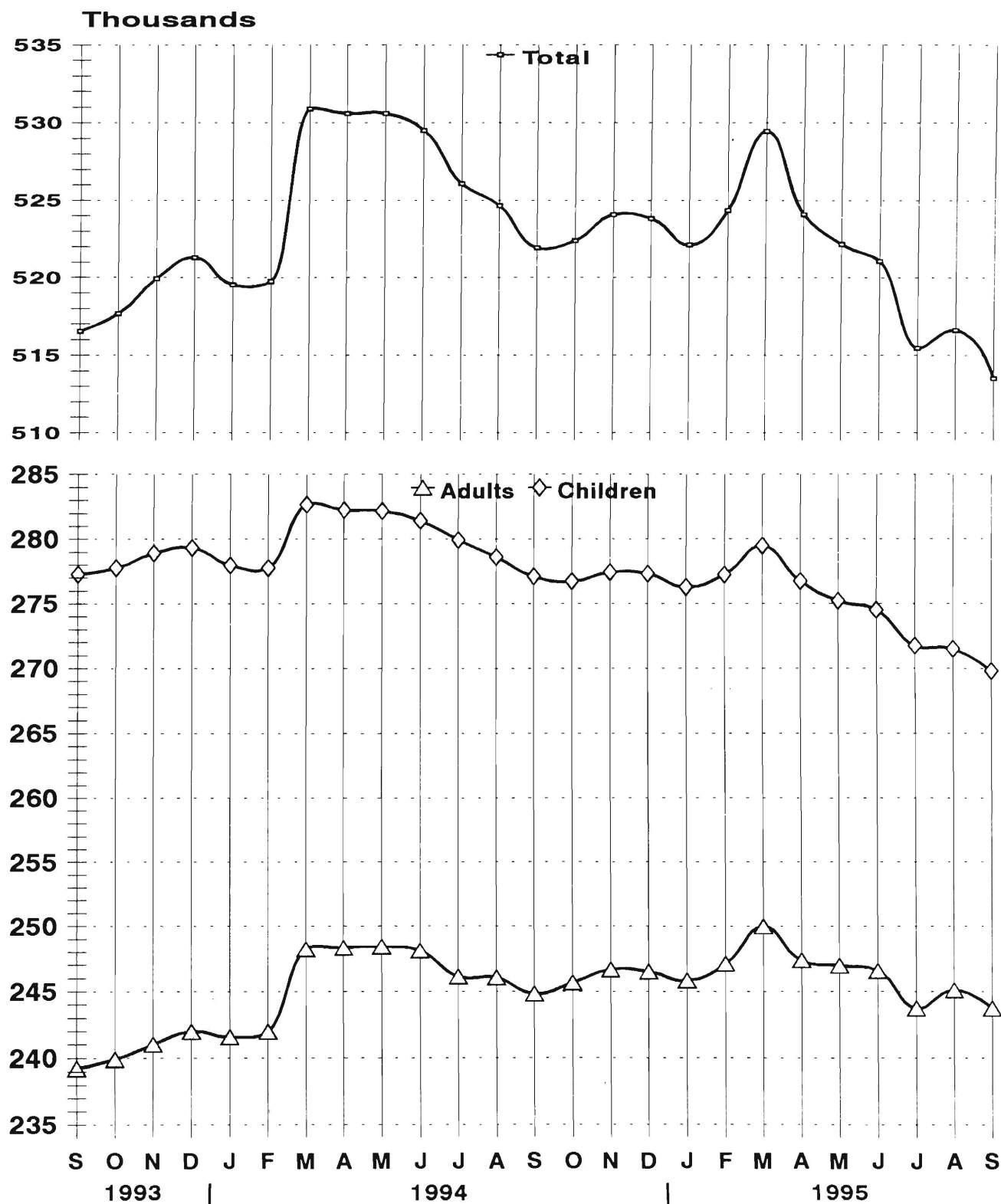
### September 1993 through September 1995



# GRAPH 6

## Food Stamp Recipients

September 1993 through September 1995



**TABLE 7****EMERGENCY ASSISTANCE Program for AFDC recipients**  
**State Summary**

NUMBER OF APPLICATIONS AND TERMINATIONS DURING REPORT MONTH,  
AND NUMBER OF ELIGIBLE FAMILIES RECEIVING EMERGENCY ASSISTANCE  
AT END OF REPORT MONTH

**AUGUST 1993 through AUGUST 1995**

Applications		Total families receiving EA	Temporary rental assist.	Motel Housing	Emergency Shelter	Other AFDC-EA
Approved	Terminations					

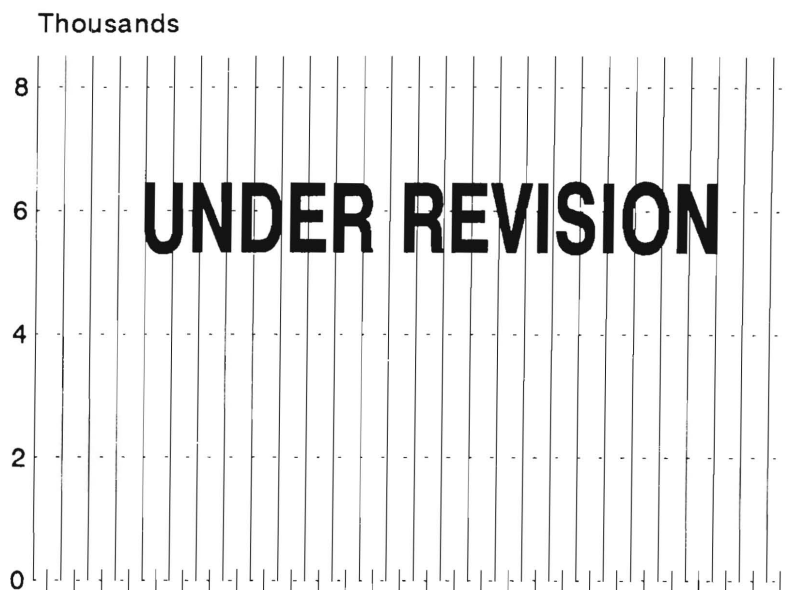
HISTORICAL SERIES UNDER REVISION

Data Sources: Data is compiled by County Welfare Agencies & reported to the NJ Division of Family Development on report form # PA-217.

## GRAPH 7

**AFDC Families Receiving Emergency Assistance**  
September 1993 through September 1995

---





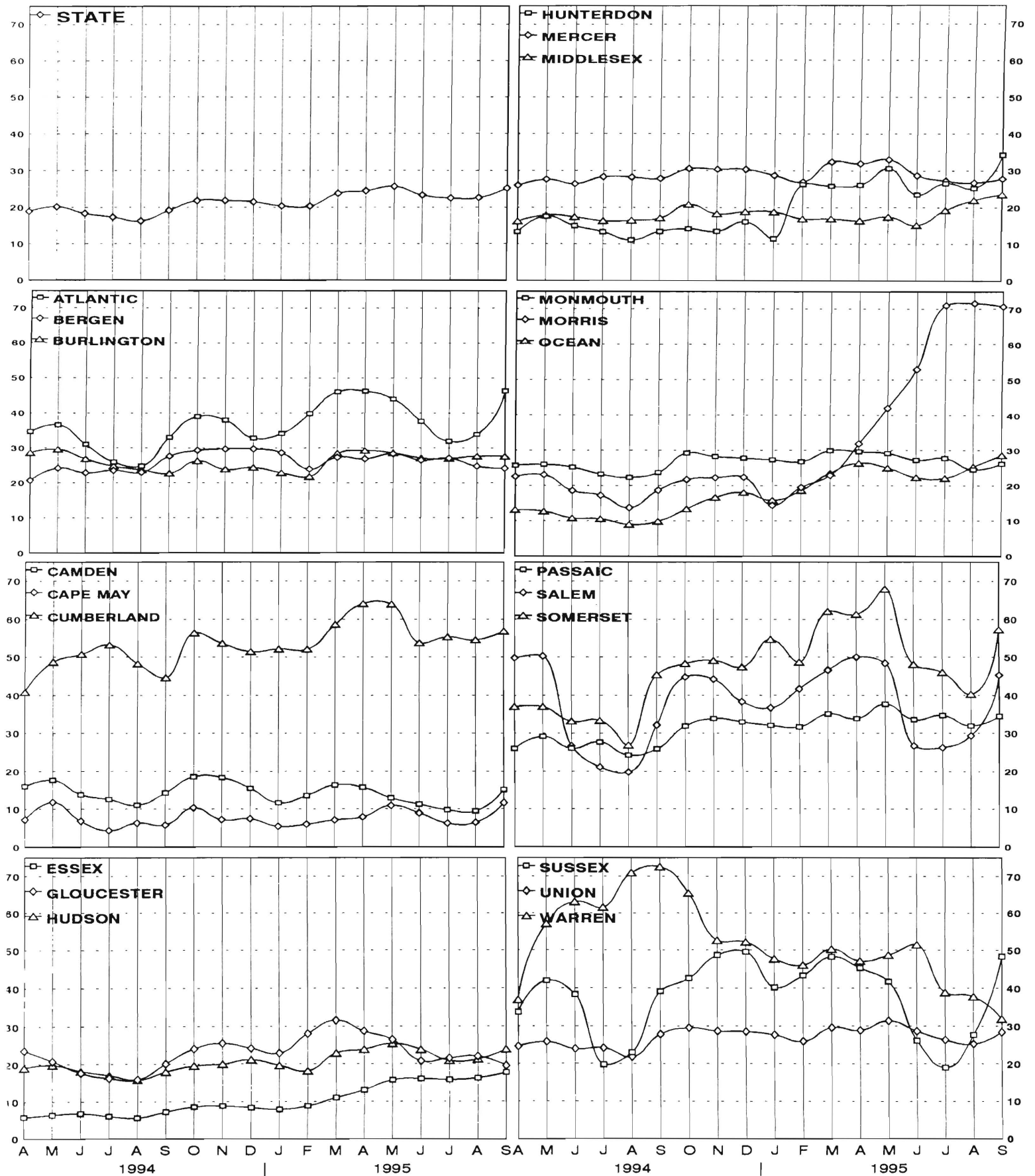
New Jersey Department of Human Services  
Division of Family Development

**TABLE 8**  
**JOBS/FDP PARTICIPATION RATES BY MONTH**  
**(PERCENT)**

COUNTY	APR 94	MAY 94	JUN 94	JUL 94	AUG 94	SEP 94	OCT 94	NOV 94	DEC 94	JAN 95	FEB 95	MAR 95	APR 95	MAY 95	JUN 95	JUL 95	AUG 95	SEP 95
ATLANTIC	34.7	36.6	31.0	26.0	24.8	33.0	39.0	38.0	32.8	34.2	39.8	46.1	46.3	44.0	37.7	31.9	33.9	46.4
BERGEN	20.7	24.2	22.9	23.5	23.0	27.6	29.3	29.7	29.7	28.6	23.9	27.3	26.9	28.3	26.5	27.0	24.8	24.2
BURLINGTON	28.6	29.6	26.8	24.7	23.7	22.7	26.2	23.9	24.4	22.9	21.8	28.5	29.2	28.6	27.1	26.9	27.7	27.6
CAMDEN	16.0	17.6	13.8	12.6	11.1	14.3	18.5	18.3	15.5	11.7	13.6	16.3	15.7	12.9	11.3	9.8	9.5	15.1
CAPE MAY	7.2	11.8	6.9	4.4	6.3	5.8	10.4	7.3	7.5	5.5	6.0	7.2	7.9	10.9	9.0	6.3	6.5	11.7
CUMBERLAND	50.8	53.2	48.3	44.7	45.1	52.5	56.4	53.7	51.5	52.2	52.1	58.6	64.1	64.0	53.8	55.3	54.6	56.9
ESSEX	5.7	6.3	6.7	6.0	5.5	7.2	8.5	8.8	8.3	7.8	8.8	11.0	13.0	15.7	16.0	15.8	16.2	17.7
GLOUCESTER	23.6	20.7	17.6	16.2	15.8	20.0	24.0	25.5	24.2	22.8	28.1	31.6	28.7	26.4	20.7	21.5	22.0	19.5
HUDSON	19.0	19.7	18.1	17.0	15.7	17.9	19.5	20.0	21.1	19.6	18.1	22.9	23.8	25.4	23.8	20.8	21.2	23.8
HUNTERDON	13.3	17.5	15.0	13.3	11.1	13.4	14.2	13.5	16.1	11.5	26.2	25.8	26.1	30.6	23.5	26.6	25.2	34.3
MERCER	26.0	27.6	26.4	28.4	28.3	27.9	30.5	30.4	30.4	28.7	27.0	32.5	31.9	33.1	28.7	27.3	26.7	27.8
MIDDLESEX	16.2	17.9	17.4	16.3	16.5	17.1	20.8	18.2	18.8	18.8	16.8	16.9	16.3	17.4	15.1	19.2	22.0	23.6
MONMOUTH	25.7	26.0	25.2	23.2	22.3	23.7	29.2	28.2	27.8	27.3	26.8	29.9	29.6	29.1	27.2	27.7	24.5	26.2
MORRIS	22.6	23.1	18.6	17.3	13.7	18.7	21.7	22.2	22.4	14.4	19.5	22.9	31.9	42.0	52.9	71.0	71.7	70.7
OCEAN	13.2	12.7	10.8	10.6	9.0	9.9	13.4	16.7	18.1	15.8	18.6	23.6	26.4	25.0	22.3	22.1	25.4	28.6
PASSAIC	26.0	29.2	26.1	27.7	24.3	25.9	31.9	33.9	33.0	32.1	31.7	35.1	33.9	37.7	33.6	34.7	32.0	34.5
SALEM	49.8	50.3	26.7	21.2	19.8	32.2	44.8	44.2	38.3	36.7	41.7	46.6	50.0	48.4	26.7	26.3	29.4	45.3
SOMERSET	37.0	37.0	33.2	33.4	26.9	45.4	48.3	49.1	47.4	54.7	48.7	62.0	61.3	68.0	48.1	46.1	40.3	57.3
SUSSEX	33.7	42.0	38.3	19.7	23.0	39.2	42.6	48.7	49.6	40.2	43.3	48.2	45.3	41.7	26.1	19.0	27.7	48.4
UNION	24.6	25.8	23.9	24.2	21.8	27.9	29.5	28.7	28.6	27.7	26.0	29.6	28.9	31.4	28.6	26.3	25.2	28.4
WARREN	37.0	57.1	63.0	61.5	71.0	72.5	65.4	52.6	52.2	47.7	46.1	50.3	47.2	48.7	51.5	38.9	37.8	32.0
STATE	18.9	20.1	18.3	17.3	16.3	19.1	21.8	21.8	21.5	20.4	20.3	23.8	24.5	25.7	23.3	22.5	22.6	25.2

# GRAPH 8

## JOBS/FDP PARTICIPATION RATES (%)



New Jersey Department of Human Services  
Division of Family Development

**TABLE 9**

**GENERAL ASSISTANCE Program**  
**State Summary**

**NUMBER OF EMPLOYABLE AND UNEMPLOYABLE  
RECIPIENTS DURING REPORT MONTH**

March 1993 through March 1995

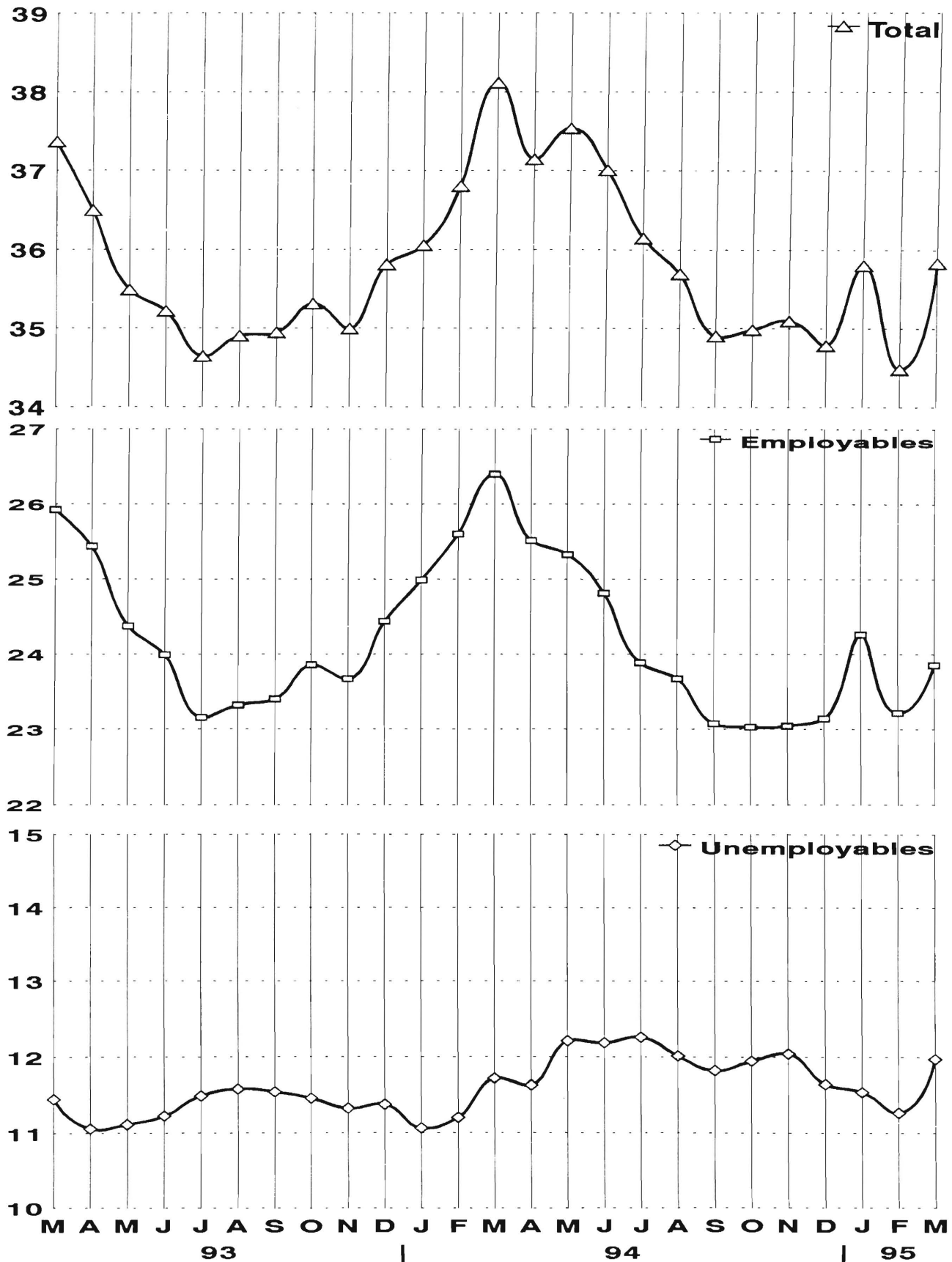
	Number of Persons Aided		
	Employables	Unemployables	Total
1993 Mar	25,921	11,445	37,366
Apr	25,438	11,057	36,495
May	24,370	11,113	35,483
Jun	23,989	11,225	35,214
Jul	23,156	11,488	34,644
Aug	23,320	11,580	34,900
Sep	23,402	11,542	34,944
Oct	23,853	11,455	35,308
Nov	23,668	11,324	34,992
Dec	24,435	11,374	35,809
AVERAGE (12 mos)	24,250	11,374	35,624
1994 Jan	24,992	11,062	36,054
Feb	25,600	11,202	36,802
Mar	26,397	11,719	38,116
Apr	25,512	11,629	37,141
May	25,327	12,212	37,539
Jun	24,814	12,190	37,004
Jul	23,884	12,261	36,145
Aug	23,671	12,018	35,689
Sep	23,075	11,825	34,900
Oct	23,031	11,950	34,981
Nov	23,046	12,045	35,091
Dec	23,142	11,642	34,784
AVERAGE	24,486	11,828	36,315
1995 Jan	24,262	11,537	35,799
Feb	23,219	11,264	34,483
Mar	23,855	11,976	35,831
AVERAGE	23,779	11,592	35,371

# GRAPH 9

## General Assistance Recipients

March 1993 through March 1995

Thousands



## New Jersey Department of Human Services

**TABLE 10****CHILD SUPPORT AND PATERNITY**  
**State Summary****Child Support and Paternity Collections****\$1000's**

COLLECTION SOURCE	Federal Fiscal Years		Percent Change
	1994	1995	1994-1995
<b>AFDC &amp; FOSTER CARE</b>			
Federal Tax	\$15,170.0	\$16,106.4	6.2%
State Tax	2,169.8	1,738.0	-19.9%
Unempl. Ins. Ben.	4,081.0	4,342.6	6.4%
Income Withholding	43,696.4	45,758.7	4.7%
Other/Own Behalf	17,729.3	18,258.4	3.0%
From Other States	3,303.5	3,401.5	3.0%
For Other States	5,612.7	7,009.9	24.9%
<b>TOTAL COLLECTION</b>	<b>91,762.6</b>	<b>96,615.6</b>	<b>5.3%</b>
<b>NON- AFDC</b>			
Federal Tax	\$6,288.4	\$7,011.0	11.5%
State Tax	2,434.1	2,086.7	-14.3%
Unempl. Ins. Ben.	13,514.8	14,415.7	6.7%
Income Withholding	227,505.1	260,768.1	14.6%
Other/Own Behalf	151,072.8	157,100.0	4.0%
From Other States	19,761.5	20,951.4	6.0%
For Other States	21,906.2	27,714.1	26.5%
<b>TOTAL COLLECTION</b>	<b>442,482.9</b>	<b>490,047.0</b>	<b>10.7%</b>
<b>TOTAL</b>			
Federal Tax	\$21,458.3	\$23,117.4	7.7%
State Tax	4,603.9	3,824.8	-16.9%
Unempl. Ins. Ben.	17,595.8	18,758.4	6.6%
Income Withholding	271,201.4	306,526.8	13.0%
Other/Own Behalf	168,802.1	175,358.4	3.9%
From Other States	23,065.0	24,352.9	5.6%
For Other States	27,518.9	34,724.0	26.2%
<b>TOTAL COLLECTION</b>	<b>534,245.5</b>	<b>586,662.6</b>	<b>9.8%</b>

Collection Source: Reflects Collections Recorded by County Probation Departments

## **Explanatory Notes**

The Department of Human Services Division of Family Development provides basic income and an opportunity to achieve self-sufficiency for individuals and families served by the Division's programs. The Division provides leadership, direction and supervision to those public agencies responsible for administering those programs and plans for and develops policies to promote self-sufficiency.

**AID TO FAMILIES WITH DEPENDENT CHILDREN (AFDC)** - Financial assistance for dependent children and their natural or adoptive parents, or certain other relatives recognized as taking the place of a parent.

**Regular AFDC (C Segment)** - assistance when only one parent is in the home due to death or absence, or both parents are in the home but at least one is incapacitated.

**Unemployed Parents (F Segment)** - assistance when both parents are in the home, neither is incapacitated and the primary wage earner meets the federally defined criteria for unemployment.

**State AFDC (N Segment)** - assistance when both parents are in the home, neither is incapacitated, and the primary wage earner does not meet the federal definition of unemployment.

**Medicaid Only** - families no longer receiving AFDC financial assistance but remaining eligible for Medicaid under applicable provisions which extend coverage beyond period of AFDC assistance.

**FOOD STAMP PROGRAM (FS)** - Authorized by Congress as a nutritional supplement program to provide low income households with more food of greater variety and better nutrition. Program eligibility is based on household income, resources, and expenses for medical, shelter, and dependent care. CWA staff refer certain recipients to the New Jersey Department of Labor for participation in the Food Stamp Employment and Training Program.

**EMERGENCY ASSISTANCE (EA)** - Payments to those eligible for AFDC (also for General Assistance or Supplemental Security Income, not included here), authorized during the 30 consecutive days immediately following the emergency (defined as a substantial loss of shelter, food, clothing, or household furnishings by fire, flood or other similar disaster) or if the eligible individual or family is in an imminent or actual state of homelessness.

## **JOBS/FDP**

**JOB OPPORTUNITY AND BASIC SKILLS PROGRAM (JOBS)** - Federally mandated work/training program for recipients of AFDC established by the Family Support Act of 1988 under Part F of Title IV of the Social Security Act.

**FAMILY DEVELOPMENT PROGRAM (FDP)** - Reform legislation enacted by the State Legislature in January 1992 to: build, strengthen, and support the family unit; encourage family formation; reduce the long-term aspects of welfare dependency; look to the needs of the family unit as a whole; emphasize education and training for all family members; maximize use of educational, training and employment resources; and develop genuine private sector job opportunities.

**SNAPSHOT OF ACTIVITY AT POINT IN TIME** - Status of activities as of the end of the month:

**Total Non-Exempt JOBS/FDP Recipients** - Calculation of the number of mandatory IV-F individuals (FAMIS report # FB304).

**Employment Directed Activities (EDA)** - From Activities Summary Report (OMEGA report # RM064). Unduplicated count of persons participating in **Training, Education, or Job Search**.

**Participants in EDA, Receiving Support Services** - From Issuance Disbursement Summary (OMEGA report # RM703). Total number of active participants who show receipt of **Training Related Expenses** or **Child Care**.

**Participation Rate (JOBS/FDP)** - Federally mandated calculation method, dividing the number of participants whose combined and averaged weekly hours of participation in qualifying activities equals or exceeds 20 hours per week by the total number of non-exempt IV-F recipients. As of the end of the month.

**ACTIVITY FOR THE MONTH** - Number of participants with the indicated activity during the month:

**Participants with First Case Management Interview** - From Activities Summary Report (OMEGA report # RM064).

**Number of Persons Employed This Month, Still Receiving AFDC** - From Activities Summary Report (OMEGA report # RM064).

**Number of Persons Closed on FAMIS Due to Earnings** - From FAMIS report # FM463.

**Post AFDC and Receiving Child Care** - Persons no longer in receipt of AFDC, but still receiving child care. From Issuance Disbursement Summary (OMEGA report # RM703).

New Jersey Department of Human Services  
Division of Family Development

**TABLE 11****GENERAL ASSISTANCE Program**

NUMBER OF EMPLOYABLE AND UNEMPLOYABLE RECIPIENTS DURING REPORT MONTH  
COUNTIES AND 21 LARGEST MUNICIPALITIES

**March 1995**

County	Employables	Unemployables	Total	Municipality	Employables	Unemployables	Total
ATLANTIC	1,404	578	1,982	Atlantic City	1,112	309	1,421
BERGEN	559	582	1,141	Mount Holly	207	95	302
BURLINGTON	681	447	1,128	Camden	2234	786	3,020
CAMDEN	2,759	1,249	4,008	Vineland	206	109	315
CAPE MAY	258	143	401	East Orange	542	422	964
CUMBERLAND	404	224	628	Irvington	262	80	342
ESSEX	6,835	2,264	9,099	Montclair	215	112	327
GLOUCESTER	252	189	441	Newark	5,239	1,398	6,637
HUDSON	1,246	1,305	2,551	Orange	413	56	469
HUNTERDON	54	56	110	Bayonne	168	66	234
MERCER	2,015	765	2,780	Hoboken	143	115	258
MIDDLESEX	738	596	1,334	Jersey City	686	587	1,273
MONMOUTH	1,073	842	1,915	Trenton	1,861	641	2,502
MORRIS	210	243	453	Perth Amboy	187	108	295
OCEAN	944	534	1,478	Asbury Park	241	99	340
PASSAIC	2,152	654	2,806	Long Branch	248	108	356
SALEM	203	95	298	Lakewood	395	115	510
SOMERSET	115	178	293	Passaic	660	257	917
SUSSEX	82	82	164	Paterson	1,360	208	1,568
UNION	1,795	894	2,689	Elizabeth	1,093	477	1,570
WARREN	76	56	132	Plainfield	275	98	373
NJ TOTAL	23,855	11,976	35,831	TOTAL	17,747	6246	23,993