

May 2024 Traffic Report

AVIATION DEPARTMENT (Data As Of 6/27/2024 3:03:05 PM)

REGION

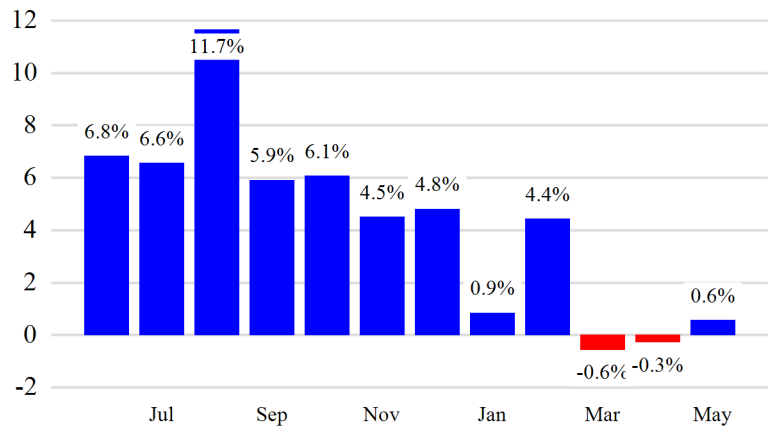


Revenue Passengers

	Curr Month	% Change
	13,029,881	0.6% ▲
Domestic	8,479,270	-2.5%
International	4,550,611	6.9%
Non-Revenue	307,890	-9.4%

Load Factors	Curr Month	Avg Load Factor
Domestic	86.1%	85.3%
International	83.9%	

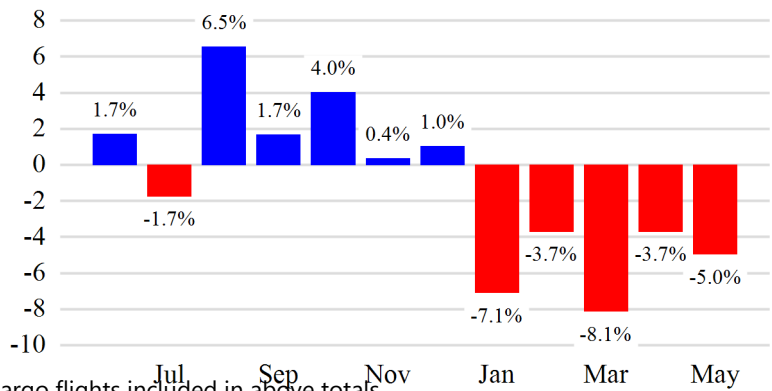
Year over Year % Change in Revenue Passengers - 12 Months



Total Flights

	Curr Month	% Change
	110,077	-5.2% ▼
Excl GA	104,421	-5.0% ▼
Domestic	76,790	-7.8%
International	27,631	4.1%
Gen Aviation	5,656	-9.7%
Cargo Flights*	3,107	-7.9%

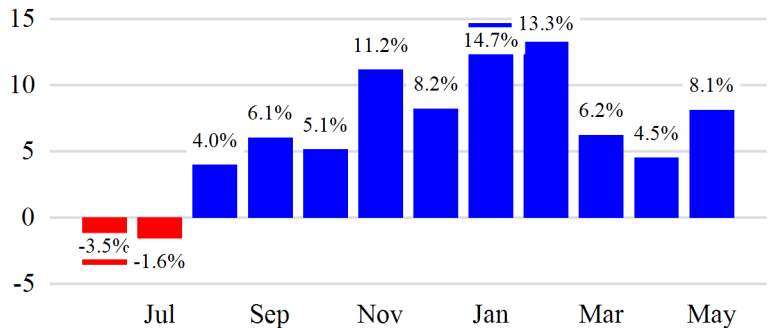
Year over Year % Change in Total Flights (Excl GA) - 12 Months



Cargo (Short Tons)

	Curr Month	% Change
	203,127	8.1% ▲
Domestic	89,429	9.4%
International	113,698	7.2%
Mail	6,607	-26.2%

Year over Year % Change in Cargo - 12 Months



Top 5 Declines in Revenue Passengers by Airline

Airline	Pax Decline	% Decline
JETBLUE AIRWAYS	(209,661)	-11.0%
AMERICAN	(74,122)	-5.0%
UNITED	(60,251)	-2.0%
ALASKA AIRLINES	(20,345)	-9.0%
AIR CANADA	(15,256)	-9.0%

Top 5 Increases in Revenue Passengers by Airline

Airline	Pax Increase	% Increase
SPIRIT AIRLINES	162,303	42.0%
DELTA	62,423	2.0%
FRONTIER AIRLINES	35,418	86.0%
LUFTHANSA	22,626	30.0%
EL AL	21,306	41.0%

Airport Summary Statistics

JFK Summary

	Current Month	YoY %
Total Revenue Pax	5,589,419	1.0
Total Flights Including GA	40,546	-4.0
Total Cargo (Short Tons)	141,000	10.2

EWR Summary

	Current Month	YoY %
Total Revenue Pax	4,401,024	0.0
Total Flights Including GA	36,816	-4.0
Total Cargo (Short Tons)	59,231	3.4

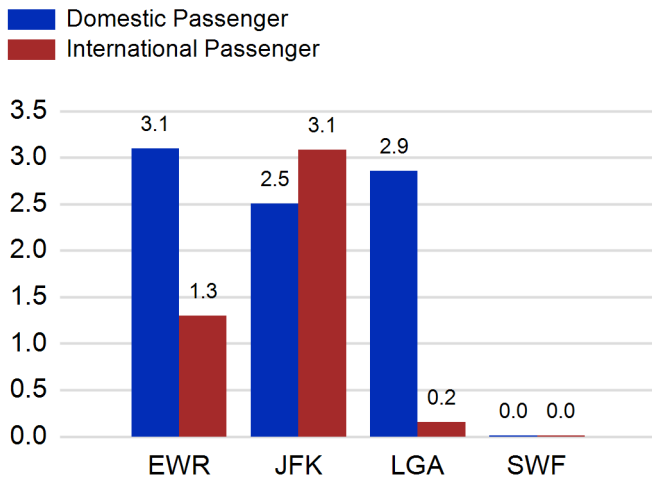
LGA Summary

	Current Month	YoY %
Total Revenue Pax	3,016,664	0.0
Total Flights Including GA	30,767	-6.0
Total Cargo (Short Tons)	526	-13.1

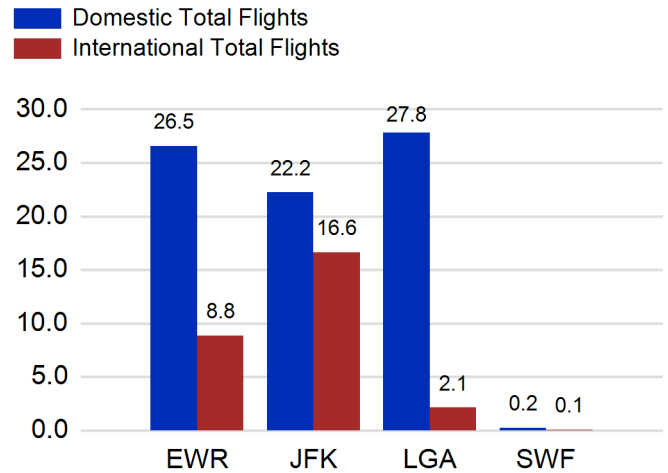
SWF Summary

	Current Month	YoY %
Total Revenue Pax	22,774	17.0
Total Flights Including GA	1,948	-20.0
Total Cargo (Short Tons)	2,371	17.0

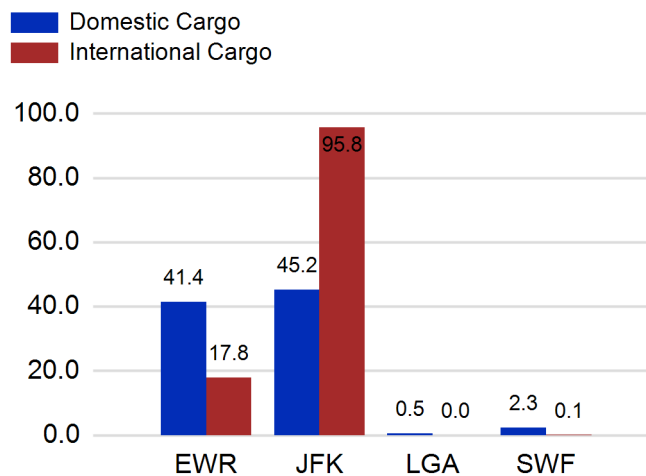
Total Passengers by Airport (Millions)



Total Flights by Airport (Thousands)



Total Cargo by Airport (Thousands of Short Tons)



12 Months Ending Passenger & Freight Statistics

Top 20 Airlines Ranking by Passengers & Freight: 12 Months Ending May 2024

Airline Name	Domestic	International	Total Pax	% of Tot	Airline Name	Short Tons	% of Tot
UNITED	26,829,637	8,576,950	35,406,587	24.47%	FEDERAL EXPRESS	373,930	15.62%
DELTA	27,873,848	6,378,955	34,252,803	23.68%	UNITED PARCEL	196,533	8.21%
JETBLUE AIRWAYS	13,707,006	6,898,416	20,605,422	14.24%	UNITED	182,546	7.62%
AMERICAN	13,640,457	3,473,221	17,113,678	11.83%	DELTA	117,687	4.91%
SPIRIT AIRLINES	5,342,500	0	5,342,500	3.69%	KALITTA AIR LLC	111,002	4.64%
SOUTHWEST AIRLINES	3,223,812	0	3,223,812	2.23%	ATLAS AIR	93,662	3.91%
ALASKA AIRLINES	2,253,646	0	2,253,646	1.56%	AMERICAN	79,295	3.31%
AIR CANADA	0	1,820,881	1,820,881	1.26%	AIR TRANSPORT INT'L.(BAX Inc.)	74,885	3.13%
BRITISH AIRWAYS	0	1,739,808	1,739,808	1.20%	BRITISH AIRWAYS	55,578	2.32%
AIR FRANCE	0	1,195,134	1,195,134	0.83%	CATHAY PACIFIC	53,456	2.23%
VIRGIN ATLANTIC	0	1,066,036	1,066,036	0.74%	LUFTHANSA	53,166	2.22%
AVIANCA	0	1,064,092	1,064,092	0.74%	KOREAN	50,223	2.10%
EMIRATES AIRLINES	0	1,061,208	1,061,208	0.73%	CARGOLUX AIRLINES	48,035	2.01%
LUFTHANSA	0	939,779	939,779	0.65%	CHINA AIRLINES	43,760	1.83%
TURKISH AIRLINES	0	779,953	779,953	0.54%	VIRGIN ATLANTIC	41,157	1.72%
AER LINGUS	0	761,138	761,138	0.53%	ABX AIR INC	38,305	1.60%
EL AL	254	726,135	726,389	0.50%	AIR CHINA	35,385	1.48%
SAS	0	588,975	588,975	0.41%	TURKISH AIRLINES	34,790	1.45%
AIR INDIA	0	578,351	578,351	0.40%	CHINA CARGO AIRLINES	34,366	1.44%
LATAM AIRLINES	0	574,648	574,648	0.40%	ASIANA	31,004	1.29%

Passengers & Freight by Market - 12 Months Ending

Market	Passengers	Freight (Short Tons)
TRANSATLANTIC	26,993,995	863,116
CANADA	4,283,745	6,590
CARIBBEAN + BERMUDA	8,950,504	10,792
CENTRAL AND SOUTH AMERICA	4,768,764	61,828
DOMESTIC	91,594,388	1,015,604
MEXICO	2,494,677	13,026
TRANSPACIFIC	3,128,664	414,926
PUERTO RICO	2,458,345	8,559

Additional Data

Airline Schedules (ADI): Non-Stop Destinations

	Region	Flights (Daily)	Cities
Domestic	Domestic	2377.8	110
	Puerto Rico	37.5	3
	Total	2,415.3	113.00
International	Canada	176.5	8
	Caribbean & Bermuda	152.5	22
	Central & South America	74.8	17
	Mexico	43.6	6
	Transatlantic	380.1	62
	Transpacific	38.8	12
	Total	866.4	127.00
Total	3,281.7	240.00	

Airline Schedules (ADI): Carriers & Aircraft Type

	Aircraft Type	Flights (Daily)	Carriers
Domestic	Commuter	870.5	4
	Narrow Body	1503.8	11
	Wide Body	40.9	4
Total	Total	2,415.3	19.00
International	Commuter	150.4	5
	Narrow Body	327.4	22
	Wide Body	388.5	60
Total	Total	866.4	87.00
Total	Total	3,281.7	106.00

Passenger Demographics (ACI ASQ Surveys - 2023)

Transport Mode	Trip Type	Gender
Bus/Shuttle	Business	M
Other	Leisure	F
Private car dropped off by someone	Annual Flights	Residency
Private/Company Car	1-2	United States
Rail/Subway	3-5	Other
Rental Car	6-10	Connect
Ridesharing (e.g. Uber)	11-20	Local Origin/Destination
Taxi/Limo	21+	Connecting

Ground Transportation

	Curr Month	% Change		Curr Month	% Change
<i>Paid Parked Cars</i>	363,311	6.1	<i>Total Air Train Passengers</i>	2,848,754	8.5
<i>GTC Bookings</i>	0		<i>Paid Howard Beach Passengers</i>	150,608	2.2
<i>Airport Coach Passengers</i>	45,150	30.1	<i>Paid Jamaica Passengers</i>	756,891	49.3
<i>Taxis Dispatched</i>	353,765	-8.4	<i>Paid EWR Passengers</i>	257,236	7.6
			<i>On-Airport (Unpaid) Passengers</i>	1,684,018	-2.8

Airlines for American Carriers (USA)

	Curr Month	% Change
<i>Freight:revenue ton miles (000)</i>	0	

Regional Airports: Other

	Curr Month	% Change
<i>TEB flight movements</i>	16,657	-0.2
<i>ISP Total passengers</i>	123,854	14.1
<i>HPN Total passengers</i>	189,906	-1.7