

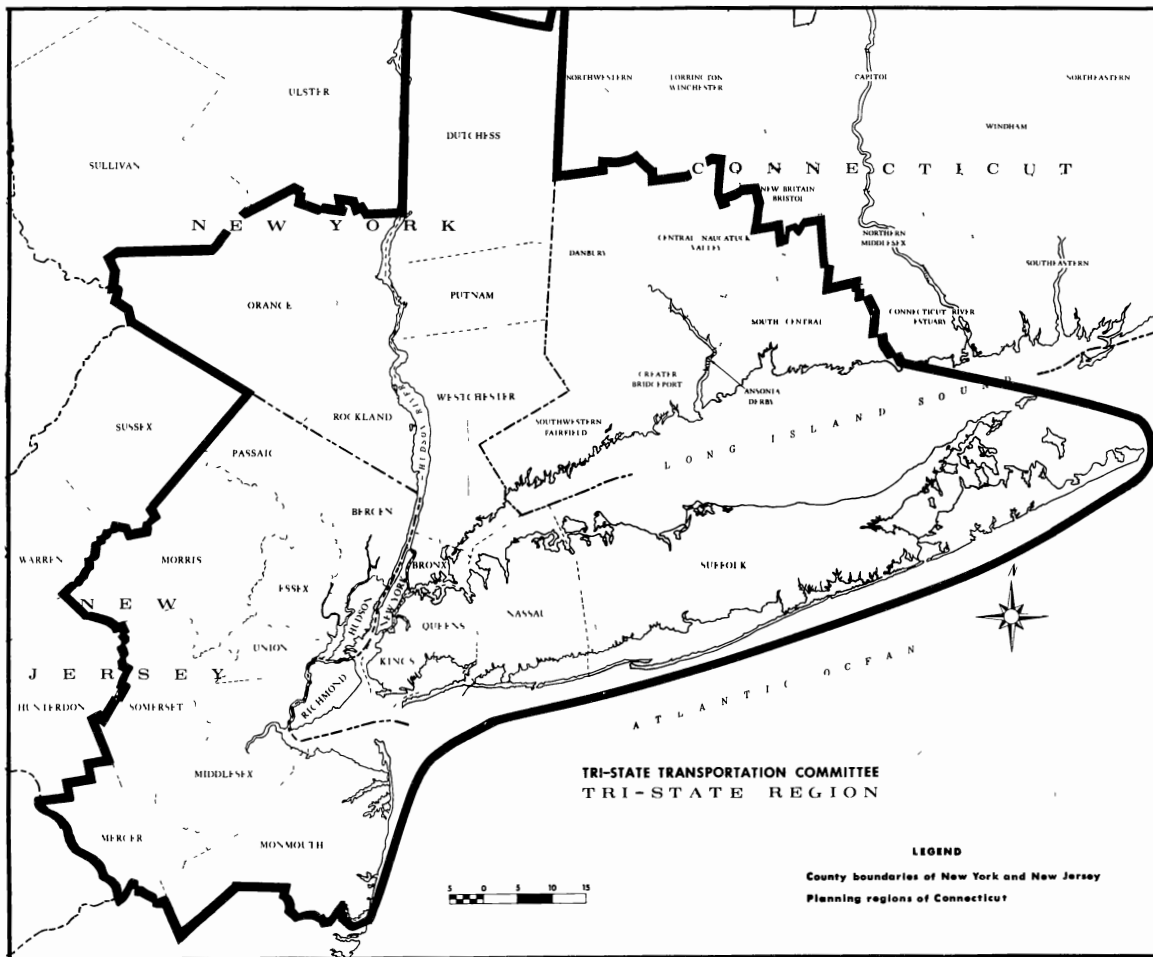
T764  
1964

190  
T764  
1964  
hok

# PARK 'N RIDE RAIL SERVICE

## A MASS TRANSPORTATION DEMONSTRATION GRANT PROJECT

### NEW BRUNSWICK -- NEWARK -- NEW YORK CITY



PROGRESS REPORT No. 2

PERIOD ENDING

OCTOBER 1964

New Jersey State Library

# TRI-STATE TRANSPORTATION COMMITTEE

CONNECTICUT - NEW JERSEY - NEW YORK

**PARK 'N RIDE RAIL SERVICE**

**NEW BRUNSWICK - NEWARK - NEW YORK CITY**

**PROGRESS REPORT No. 2**

**PERIOD ENDING**

**OCTOBER 1964**

**PARTICIPATING AGENCIES**

**TRI-STATE TRANSPORTATION COMMITTEE  
HOUSING AND HOME FINANCE AGENCY  
NEW JERSEY STATE HIGHWAY DEPARTMENT  
DIVISION OF RAILROAD TRANSPORTATION  
MIDDLESEX COUNTY      CITY OF NEW BRUNSWICK  
PENNSYLVANIA RAILROAD**

THE PREPARATION OF THIS REPORT HAS BEEN FINANCED IN PART THROUGH A MASS TRANSPORTATION DEMONSTRATION GRANT FROM THE U.S. HOUSING AND HOME FINANCE AGENCY UNDER THE PROVISIONS OF SECTION 103(B) OF THE HOUSING ACT OF 1949, AS AMENDED BY SECTION 303 OF THE HOUSING ACT OF 1961.

**Issued December 1964**

PARK 'N RIDE PROJECT

New Brunswick, New Jersey

PLANNING AND COORDINATING UNIT

Ludwell A. Larzelere - Director, Mass Transportation Demonstration Projects  
Alex Johnson - Project Administrator  
Paul J. Duckett - Field Analyst

Herbert A. Thomas - Director, Division of Railroad Transportation  
New Jersey State Highway Department  
Harold Kendler - Operations Chief, Division of Railroad Transportation  
New Jersey State Highway Department

Douglas S. Powell - Director of Planning, Middlesex County  
William E. Roach, Jr., - Planning Director, Somerset County  
Vincent I. Cassera - Planning Director, City of New Brunswick

Janes W. Diffenderfer - Manager, Special Services, Pennsylvania Railroad  
Frank J. Roth - General Passenger Agent, Pennsylvania Railroad



Facsimile of Roadside Directional Signs

## PARK 'N RIDE PROJECT

New Brunswick, New Jersey

The new Jersey Avenue Station, suggested by the Division of Railroad Transportation, New Jersey State Highway Department as the Park 'N Ride Project, was approved by the U. S. Housing and Home Finance Agency and constructed during mid-1963. The project completed 12 months of actual station operation for public patronage on October 27, 1964. It is planned to continue the demonstration through April 1965.

The new facility was designed to demonstrate whether location of a railroad station with free parking for 300 cars away from the congested downtown area would result in greater railroad patronage by residents of the suburban fringe who heretofore found it more convenient to use other modes of transportation directly from their homes to their destinations.

The station and parking area were constructed on Pennsylvania Railroad property 1.5 miles west of the New Brunswick Station at a point called County storage yard which is adjacent to the railroad's Millstone Branch (freight only). (see Station Map - Appendix)

Page 3 shows the proposed budgetary and financial requirements for the project. For continuation of station operation after the demonstration the railroad agrees to purchase the facilities at a fair and equitable residual value approved by the parties to the project.

The City of New Brunswick is located in western Middlesex County, New Jersey at the border of Somerset County, approximately 33 miles from New York City on the main line of the Pennsylvania Railroad. The "downtown" New Brunswick

Station and the new Jersey Avenue Station lie in the southwest quadrant of a fast developing residential region encompassing New Brunswick and surrounding townships. (see Area Map - Appendix)

Patronage of the new station facilities has improved each month with a sharp upswing during the month of October 1964. After 12 months of operation average daily patronage for the week ending October 30, 1964, increased to 575 passengers and 213 cars parked at the station, an increase of 94% in passengers and 115% in parked cars above the daily averages for November 1963, the second month of operation.

Initial plans for construction of the station facility included a parking area for 300 cars. On November 12, 1964 295 parked cars were counted at the station. With this steady increase in mind, room for additional parking was investigated. It has been found that ample room exists in the immediate area of the station platform and surrounding the turning loop at the end of the station approach road to accommodate 50 or 60 additional cars. In addition there is sufficient railroad-owned property beyond the present fenced parking area to accommodate an additional 100 cars.

The station is served by all eastbound and westbound suburban trains initiating and terminating at New Brunswick. Weekday train service consists of 24 eastbound trains (to Newark-New York) and 25 westbound trains (from New York-Newark) starting eastbound at 5:39 A.M. the last westbound arrival at 11:53 P.M. Saturday service consists of 8 eastbound trains and 6 westbound trains. Sunday and holiday service consists of 9 eastbound and 9 westbound trains. (see Schedule - page 4)

PARK 'N RIDE PROJECT, NEW BRUNSWICK, NEW JERSEY

\*BUDGETARY AND FINANCIAL REQUIREMENTS

Estimated Budgetary Requirements

1. Construction Costs	
Station and Parking Area	\$ 94,448
2. Railroad Operation Costs	
Station Personnel and Maintenance	29,020
3. Advertising and Promotion	25,000
4. Surveys and Appraisals	65,000
5. Supervision and Administration	<u>32,168</u>
Subtotal	\$245,636
Contingency	<u>10,549</u>
Total Demonstration Project	\$256,185

\* Approved - H. H. F. A. July 14, 1964



Typical weekday view of parking area at Jersey Avenue Station.  
Station building and platform in left background (see arrow).  
Main line (electrified) tracks and catenary system in background

Pennsylvania Railroad - Timetable

Jersey Avenue and Downtown New Brunswick To Newark & New York

To NEWARK and NEW YORK

Subj. to change without notice. Not responsible for errors

Table with columns for Leave and Arrive times at Jersey Avenue, New Brunswick, Newark, Hudson Term'l, and Penna. Station. Includes sections for Mondays thru Fridays except Sept. 7 and Saturdays, Sundays and Sept. 7.

To JERSEY AVE and NEW BRUNSWICK

Subj. to change without notice. Not responsible for errors

Table with columns for Leave and Arrive times at Penna. Station, Hudson Term'l, Newark, New Brunswick, Jersey Avenue, and Jersey Avenue. Includes sections for Mondays thru Fridays except Sept. 7 and Saturdays, Sundays and Sept. 7.

Reference Notes

- Change at Newark.
Sundays and May 30, July 4 and Sept 7
Saturdays only.

- p Sundays except Sept 6, also runs Sept 7.
r Saturdays only except May 30 and July 4
u Sundays and Sept 7

Eastern Daylight Time

Eastern Daylight Time

Form 157

The following four eastbound weekday trains with noted arrival and departure times are considered the A.M. peak period trains.

<u>Train</u>	<u>Lv. Jersey Avenue</u>	<u>Arr. New York City</u>
3710	6:57 A.M.	7:52 A.M.
3712	7:14	8:10
3716	7:47	8:35
3720	8:04	9:02

The following six westbound weekday trains are considered the P.M. peak period trains.

<u>Train</u>	<u>Lv. New York City</u>	<u>Arr. Jersey Avenue</u>
3733	4:34 P.M.	5:33 P.M.
3735	5:12	6:06
3737	5:37	6:25
3741	5:50	6:48
3745	6:40	7:34
3749	7:15	8:05

Table I, Passenger and Car Count, page 6, shows the data by month from November 1963 through October 1964.

In summary it is noted that for the month of October 53% of total patronage is eastbound and 47% westbound. This imbalance is traceable in part to train schedules. During the morning commuter hours 7 eastbound trains stop at New Brunswick Station of which 4 originate at Jersey Avenue Station. During the evening commuter hours 12 westbound trains stop at New Brunswick Station, of which only 6 continue to Jersey Avenue Station.

TABLE I

PARK 'N RIDE PROJECT - JERSEY AVENUE STATION  
 Passenger and Car Count (Monday-Friday)

<u>Period</u>	<u>Number of Days (1)</u>	<u>Passengers</u>				<u>Parked Cars</u>
		<u>Total</u>	<u>Weekday Average</u>	<u>Eastbound</u>	<u>Westbound</u>	<u>Weekday Average</u>
1963 Nov.	20	5,652	283	2,960	2,692	92
Dec.	21	6,420	306	3,387	3,033	99
1964 Jan.	22	7,157	325	3,929	3,228	116
Feb.	18	5,695	316	3,108	2,587	110
Mar.	21	7,283	347	4,180	3,103	128
Apr.	22	7,106	323	3,966	3,140	114
May	21	8,486	404	4,243	4,243	124
June	22	9,572	435	4,894	4,678	132
July	22	10,034	456	5,189	4,845	123
Aug.	21	9,340	445	4,784	4,556	128
Sept.	21	9,668	460	5,186	4,482	160
Oct.	22	11,955	543	6,288	5,667	202

(1) Includes all days, Monday through Friday for which passenger counts were received from the railroad.

Table I also indicates that during the four months period, January through April 1964, patronage distribution was 56% eastbound and 44% westbound. Effective with the railroad's general spring timetable change, at the end of April, the number of trains scheduled to terminate at Jersey Avenue in the evening commuter period were increased from five to six. The expanded service continues to date and the improved difference of 3 percentage points in current patronage distribution is noted as one of the results from the added evening commuter service.

Table II, Pages 8-13 is the daily passenger and parked car counts for each of the six months, May through October 1964, as reported by the railroad.

Table III, pages 14, 15 and 16 shows daily patronage as well as the passenger on-count eastbound and off-count westbound Monday through Friday for the following four sample weeks of train service at Jersey Avenue Station.

<u>Week Ending</u>	<u>Remarks</u>
January 17, 1964	1st Month of Operation
April 10, 1964	3rd Month of Operation
July 24, 1964	6th Month of Operation
October 12, 1964	12th Month of Operation

An analysis of the sample week period for October discloses that 16.6% of daily eastbound train service operates during morning peak period transporting 73.4% of total eastbound patronage. For travel westbound 24% of daily westbound train service operates during evening peak period transporting 67% of total westbound patronage. Of the full train service patronage 70.4% travel during the A.M.-P.M. peak period and 29.6% during off-peak periods. (For the on and off counts by train data see Appendix).

Table II

PARK 'N RIDE PROJECT - JERSEY AVENUE STATION

## Daily Passenger and Parked Car Count

May, 1964

Passengers

	<u>Weekday</u>	<u>Total</u>	<u>Eastbound</u>	<u>Westbound</u>	<u>Cars Parked</u>
May	1	338	180	158	119
	4	390	198	192	139
	5	399	203	196	138
	6	422	213	209	139
	7	400	201	199	128
	8	397	197	200	125
	11	404	208	196	137
	12	411	211	200	134
	13	417	211	206	130
	14	395	194	201	126
	15	403	204	199	124
	18	418	202	216	130
	19	432	216	216	131
	20	425	208	217	127
	21	428	217	211	124
	22	424	203	221	114
	25	439	225	214	117
	26	413	204	209	114
	27	418	211	207	132
	28	394	187	207	127
(1)	29	319	150	169	56

(1) Day preceeding Decoration Day

Table II (cont'd)

PARK 'N RIDE PROJECT - JERSEY AVENUE STATION

Daily Passenger and Parked Car Count

June 1964

Passengers

	<u>Weekday</u>	<u>Total</u>	<u>Eastbound</u>	<u>Westbound</u>	<u>Cars Parked</u>
June	1	376	186	190	131
	2	392	198	194	124
	3	421	202	219	151
	4	437	214	223	129
	5	381	219	162	123
	8	420	211	209	146
	9	423	216	207	134
	10	425	202	223	130
	11	419	201	218	129
	12	410	203	207	128
	15	445	221	224	143
	16	469	235	234	137
	17	474	255	219	140
	18	457	232	225	130
	19	428	221	207	118
	22	435	230	205	127
	23	502	258	244	140
	24	460	251	209	122
	25	465	227	238	123
	26	426	222	204	126
	29	442	247	195	135
	30	465	243	222	139

Table II (cont'd.)

PARK 'N RIDE PROJECT - JERSEY AVENUE STATION

## Daily Passenger and Parked Car Count

July 1964

Passengers

<u>Weekday</u>	<u>Total</u>	<u>Eastbound</u>	<u>Westbound</u>	<u>Cars Parked</u>
July 1	491	260	231	138
2	434	226	208	119
3	Pre July 4th Holiday - No Railroad Passenger Count			36
6	436	219	217	109
7	436	216	220	120
8	465	244	221	129
9	420	222	198	121
10	442	240	202	132
13	465	239	226	138
14	477	258	219	140
15	418	202	216	121
16	452	215	237	117
17	458	242	216	109
20	482	271	211	128
21	480	249	231	118
22	484	243	241	117
23	461	252	209	129
24	409	205	204	136
27	425	231	194	122
28	489	259	230	133
29	474	248	226	116
30	460	226	234	108
31	476	222	254	105

Table II (cont'd.)

PARK 'N RIDE PROJECT - JERSEY AVENUE STATION

## Daily Passenger and Parked Car Count

August 1964

Passengers

	<u>Weekday</u>	<u>Total</u>	<u>Eastbound</u>	<u>Westbound</u>	<u>Cars Parked</u>
August	3	468	249	219	130
	4	438	226	212	140
	5	483	258	225	132
	6	461	234	227	129
	7	403	209	194	107
	10	452	228	224	136
	11	441	229	212	138
	12	474	233	241	128
	13	444	220	224	115
	14	393	200	193	118
	17	517	254	263	152
	18	491	244	247	136
	19	478	250	228	137
	20	417	214	203	131
	21	399	203	196	111
	24	452	228	224	144
	25	441	249	192	130
	26	449	227	222	119
	27	421	220	201	121
	28	416	202	214	123
	31	402	207	195	114

Table II (cont'd)

PARK 'N RIDE PROJECT - JERSEY AVENUE STATION

Daily Passenger and Parked Car Count

September 1964

Passengers

	<u>Weekday</u>	<u>Total</u>	<u>Eastbound</u>	<u>Westbound</u>	<u>Cars Parked</u>
September	1	473	243	230	124
	2	462	246	216	145
	3	478	252	226	138
	4	437	221	216	133
	7	HOLIDAY - No Railroad Passenger Count			
	8	423	226	197	118
	9	459	245	214	155
	10	460	254	206	136
	11	417	220	197	145
	14	466	248	218	160
	15	455	235	220	170
	16	411	212	199	130
	17	430	227	203	162
	18	501	301	200	149
	21	447	231	216	175
	22	444	231	213	172
	23	483	259	224	241
	24	504	281	223	194
	25	487	263	224	168
	28	462	269	193	185
	29	465	258	207	184
	30	504	264	240	191

Table II (cont'd)

PARK 'N RIDE PROJECT - JERSEY AVENUE STATION

## Daily Passenger and Parked Car Count

October 1964

Passengers

	<u>Weekday</u>	<u>Total</u>	<u>Eastbound</u>	<u>Westbound</u>	<u>Cars Parked</u>
October	1	500	275	225	189
	2	523	281	242	178
	5	495	272	223	209
	6	512	279	233	205
	7	509	261	248	198
	8	501	265	236	202
	9	524	274	250	186
	12	460	238	222	139
	13	534	297	237	217
	14	563	278	285	201
	15	565	294	271	208
	16	563	304	259	192
	19	543	281	262	210
	20	577	294	283	215
	21	577	291	286	211
	22	539	289	250	208
	23	596	307	289	214
	26	569	295	274	216
	27	566	299	267	210
	28	588	303	285	212
	29	594	312	282	213
	30	557	299	258	214

Table III  
PARK 'N RIDE PROJECT

Total Passengers for Sample Weeks

January 13 through January 17, 1964

	Monday 1/13	Tuesday 1/14	Wednesday 1/15	Thursday 1/16	Friday 1/17	TOTAL	
AM-PM PEAK - 9 Trains	216	200	272	236	266	1190	67.4%
Off PEAK - 35 Trains	128	100	129	119	99	575	32.6%
TOTAL	344	300	401	355	365	1765	100.0%

April 6 through April 10, 1964

	4/6	4/7	4/8	4/9	4/10	TOTAL	
AM-PM PEAK - 9 Trains	242	234	243	228	231	1178	72.9%
OFF PEAK - 35 Trains	79	94	95	83	87	438	27.1%
TOTAL	321	328	338	311	318	1616	100.0%

July 20 through July 24, 1964

	7/20	7/21	7/22	7/23	7/24	TOTAL	
AM-PM PEAK --10 Trains	292	277	283	260	292	1404	60.6%
OFF PEAK - 39 Trains	190	203	201	201	117	912	39.4%
TOTAL	482	480	484	461	409	2316	100.0%

October 6 through October 12, 1964

	10/12	10/6	10/7	10/8	10/9	TOTAL	
AM-PM PEAK - 10 Trains	354	302	376	361	371	1764	70.4%
OFF-PEAK - 39 Trains	170	158	136	148	130	742	29.6%
TOTAL	524	460	512	509	501	2506	100.0%

Table III (cont'd)

PARK 'N RIDE PROJECT  
Jersey Avenue Station

Daily Passenger On-Count for Sample Weeks

EASTBOUND

January 13, through January 17, 1964

	Monday 1/13	Tuesday 1/14	Wednesday 1/15	Thursday 1/16	Friday 1/17	TOTAL	
A.M. PEAK - 4 Trains*	142	118	169	154	157	740	76.6%
OFF PEAK - 17 Trains	40	48	52	45	41	226	23.4%
TOTAL	182	166	221	199	198	966	100.0%

April 6 through April 10, 1964

	4/6	4/7	4/8	4/9	4/10	TOTAL	
A.M. PEAK - 4 Trains*	149	135	141	141	133	699	80.4%
OFF PEAK - 17 Trains	26	40	39	28	37	170	19.6%
TOTAL	175	175	180	169	170	869	100.0%

July 20 through July 24, 1964

	7/20	7/21	7/22	7/23	7/24	TOTAL	
A.M. PEAK - 4 Trains*	168	147	139	149	145	748	61.3%
OFF PEAK - 20 Trains	103	102	104	103	60	472	38.7%
TOTAL	271	249	243	252	205	1220	100.0%

October 6 through October 12, 1964

	10/12	10/6	10/7	10/8	10/9	TOTAL	
A.M. PEAK - 4 Trains*	155	207	205	206	194	967	73.4%
OFF PEAK - 20 Trains	83	72	56	59	80	350	26.6%
TOTAL	238	279	261	265	274	1317	100.0%

\* Trains arriving at New York City - 7:52, 8:10, 8:35 and 9:02 A.M.

Table III (cont'd)

PARK 'N RIDE PROJECT  
Jersey Avenue Station

Daily Passenger Off-Count for Sample Weeks

WESTBOUND

January 13 through January 17, 1964

	Monday 1/13	Tuesday 1/14	Wednesday 1/15	Thursday 1/16	Friday 1/17	TOTAL	
P.M. PEAK - 5 Trains*	74	82	103	82	109	450	56.3%
OFF PEAK - 18 Trains	88	52	77	74	58	349	43.7%
TOTAL	162	134	180	156	167	799	100.0%

April 6 through April 10, 1964

	4/6	4/7	4/8	4/9	4/10	TOTAL	
P.M. PEAK - 5 Trains*	93	99	102	87	98	479	64.1%
OFF PEAK - 18 Trains	53	54	56	55	50	268	35.8%
TOTAL	146	153	158	142	148	747	100.0%

July 20 through July 24, 1964

	7/20	7/21	7/22	7/23	7/24	TOTAL	
P.M. PEAK - 6 Trains**	124	130	144	111	147	656	59.9%
OFF PEAK - 19 Trains	87	101	97	98	57	440	40.0%
TOTAL	211	231	241	209	204	1096	100.0%

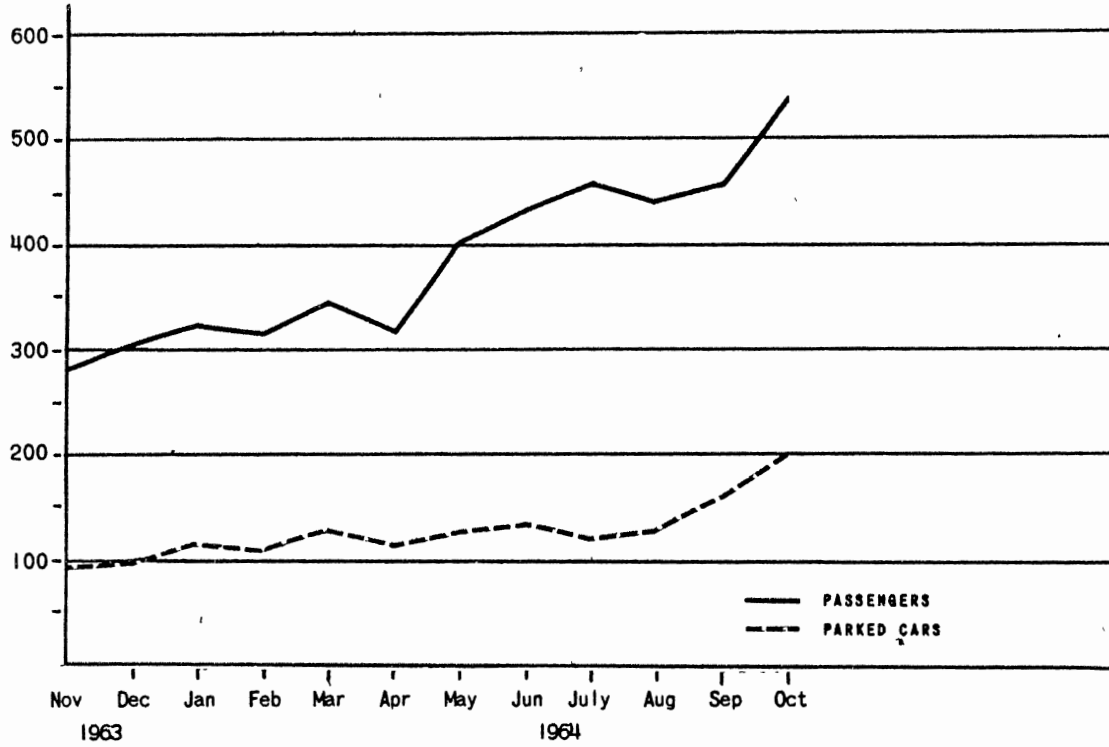
October 6 through October 12, 1964

	10/12	10/6	10/7	10/8	10/9	TOTAL	
P.M. PEAK - 6 Trains**	147	169	156	165	160	797	67.0%
OFF PEAK - 19 Trains	75	64	92	71	90	392	33.0%
TOTAL	222	233	248	236	250	1189	100.0%

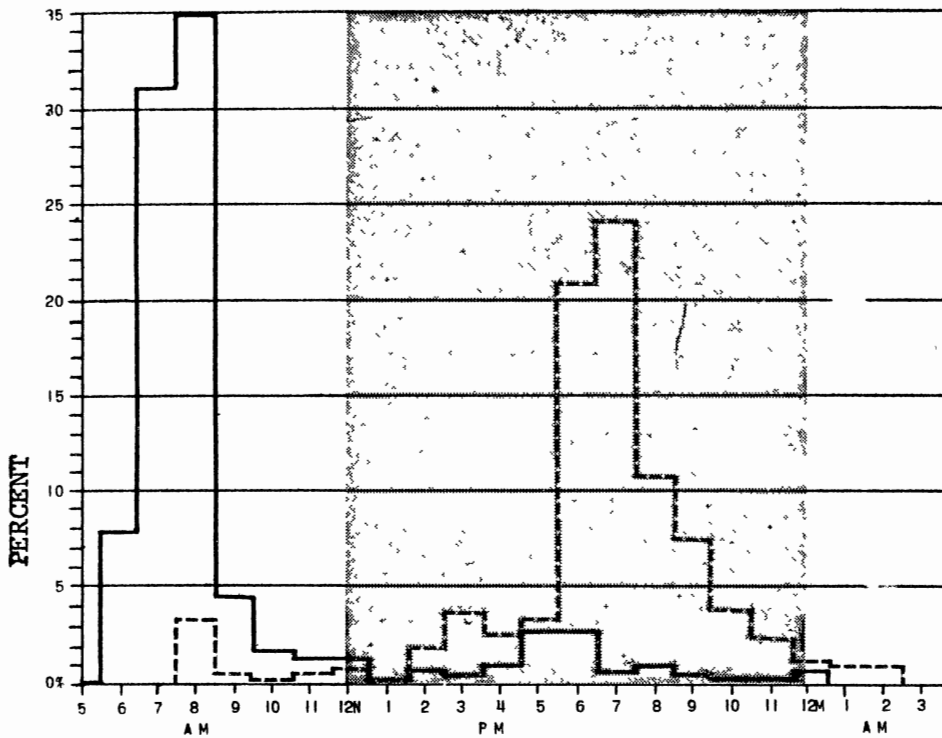
\* Trains leaving New York City 4:35, 5:12, 5:32, 6:40 and 7:15 P.M.

\*\* Trains leaving New York City 4:34, 5:12, 5:37, 5:50, 6:40 and 7:15 P.M.

JERSEY AVENUE STATION  
AVERAGE WEEKDAY NUMBER OF PASSENGERS AND CARS PARKED  
BY MONTH



The above graph shows by month the average daily (Monday-Friday) patronage of Jersey Avenue Station and the average daily number of automobiles parked in the station area.



The above bar graph represents the percentage distribution by time of rail patronage at the Jersey Avenue Station in the 24 hour period of a typical day during the 5 day period of the second week in October 1964. The solid line represents departure from the station (Eastbound) and the broken line represents arrival at the station (Westbound).

It discloses that 35% of all Eastbound rail patronage occurs during the peak morning hour from 7:30 to 8:30 A.M. and 24.0% of all Westbound rail patronage occurs during the peak evening hour from 5:30 to 6:30 P.M.

The difference in Eastbound and Westbound percentages is attributed to the fact that the time spread of the evening peak period is greater than the morning peak period and reflects that arrival time of journey-to-work travel is more limited than departure time of journey-from-work travel.

Turnstile Counts at New Brunswick Station

During May 1963 and prior to the start of project demonstration, five turnstile mechanical counters were installed on the eastbound (Newark-New York) level of the New Brunswick Station. The turnstiles are free swinging in either direction with individual counters for each direction of usage.

Daily counter readings are used to determine utilization of the "downtown" station prior to operation of the Jersey Avenue Station and for the ensuing months of the demonstration. Daily readings are obtained at 6 and 9 A.M. thus giving 24 hour counts as well as the morning peak period.

Table IV, page 20, shows by month the average weekday (Monday-Friday) eastbound (toward Newark-New York) turnstile count at the New Brunswick Station for the five month period prior to inauguration of the Jersey Avenue Station and the ensuing two six-month periods through October 1964.

Included in the table by month is the average reported weekday eastbound passenger count at Jersey Avenue Station for the noted two 6-month periods of operation through October 1964.

The following combined data summary reflects increased eastbound rail patronage from the New Brunswick area after inauguration of the Jersey Avenue Station.

Average Daily Eastbound Patronage

	<u>5 Months Prior to Demonstration</u>	<u>1st Six Months of Demonstration</u>	<u>2nd Six Months of Demonstration</u>
New Brunswick Station	2113	2080	2035
Jersey Avenue Station	-	<u>176</u>	<u>238</u>
Total	2113	2256	2273
% Increase over 5 Months Prior		6.8%	7.6%

Table IV

Average Daily Eastbound Patronage  
at New Brunswick Station and Jersey Avenue Station

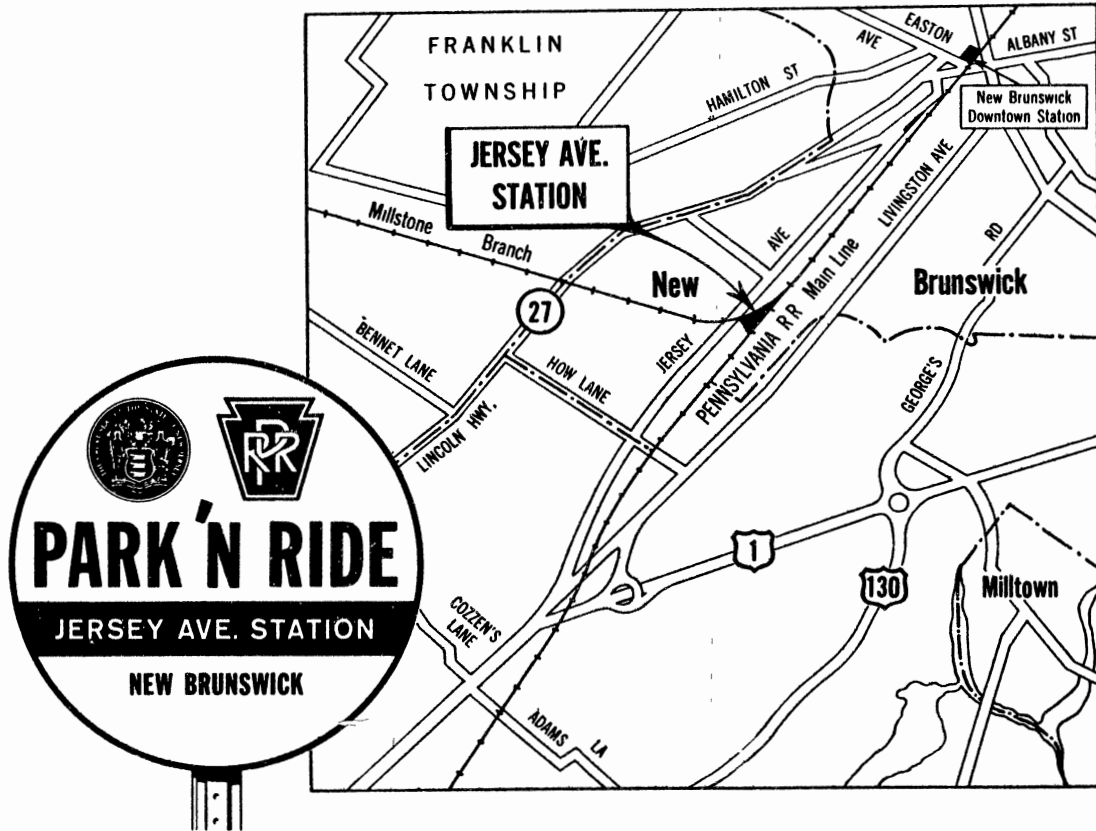
<u>For Month of-</u>	<u>EASTBOUND ONLY</u>	
	<u>(Newark-New York)</u>	
	<u>New Brunswick Turnstile Count</u>	<u>Jersey Avenue Passenger Count</u>
June 1963	2178	
July	2081	
August	2028	
September	2079	
October	<u>2197</u>	
Average	2113	
November	2122	157
December	2056	161
January 1964	2078	179
February	2030	173
March	2168	199
April	<u>2032</u>	<u>180</u>
Average	2080	176
May	2038	205
June	2045	222
July	2015	236
August	1937	228
September	2017	247
October	<u>2147</u>	<u>286</u>
Average	2035	238

During the five day period ending Friday, September 25, 1964, a license plate survey was made of all cars parked at the Jersey Avenue Station. During the survey period 345 different license plates were observed in the station free parking area. Of this total, 319 were New Jersey plates and 26 were out-of-state plates. Of the 319 New Jersey plates, 65 (20%) were observed on each of the 5 days, 48 (15%) on 4 days, 39 (12%) on 3 days, 44 (14%) on 2 days and 123 (39%) observed one day.

A preliminary comparison of the owner-addresses with a similar survey conducted during March 1964 shows little variation in the area distribution of station patronage. The major areas are located northwest and southwest of Jersey Avenue Station. (see Area Map - Appendix)

It is contemplated that during November 1964, the project Survey Consultant will conduct a second origin-destination survey of all patrons at the Jersey Avenue Station to determine any noticeable shift in pattern of station patronage. The basis for a marketing survey by telephone interview will be developed by recording via magnetic tape the license plate data of an estimated 3,000 automobiles entering Interchange #9 (New Brunswick) of the New Jersey Turnpike northbound towards Newark-New York. After selective screening of the survey results it is planned that the selected vehicle owners will be contacted by telephone home-interview in an endeavor to project future station potential.

Reproduction of Centerfold Page  
New York-New Brunswick Railroad Timetable



*"Park-'N- Ride" at the*  
**JERSEY AVENUE STATION**

**NEW BRUNSWICK**

*and get to your destination and home again*

**FASTER • EASIER • MORE CONVENIENTLY**

Plenty of free parking . . . uncongested access . . . convenient  
departure and arrival times . . . regular New Brunswick rail fares!

STATE OF NEW JERSEY  
TRI-STATE TRANSPORTATION COMMITTEE

HOUSING AND HOME FINANCE AGENCY  
PENNSYLVANIA RAILROAD

Through the cooperation of the Pennsylvania Railroad the Park 'N Ride advertisement on the preceeding page appears in the New York-New Brunswick timetable which includes the Jersey Avenue Station train schedules. The 40 roadside directional signs erected in the area posting the major street and highway routes approaching the new station have been well received by area residents.

The Jersey Avenue Station passenger ticket sales and revenue report, page 24, shows by month the gross revenue for train tickets sold at the Jersey Avenue Station during agent on-duty hours and does not necessarily reflect total revenue to the railroad for all traffic to and from the station.

Ticket Sales and Revenue at Jersey Avenue Station  
New Brunswick, N. J.

		C o m m u t a t i o n									
		<u>Total</u> <u>Revenue</u>	<u>Monthly</u>	<u>Weekly</u>	<u>School</u>	<u>One</u> <u>Way</u>	<u>Round</u> <u>Trip</u>	<u>Thrift</u>	<u>10</u> <u>Trip</u>	<u>World's</u> <u>Fair</u>	<u>Total</u>
November	1963	\$3,747	76	88	15	86	251	250	2		768
December		4,316	60	113	10	127	217	197	4		728
January	1964	4,454	65	108	10	152	227	139	3		704
February		3,947	55	103	10	76	170	145	6		565
March		5,091	58	158	11	87	281	180	5		780
April		4,870	61	129	13	58	150	170			581
May		5,995	58	146	8	88	233	345		131	1009
June		7,249	46	201	1	95	296	513	7	250	1409
July		7,002	56	165	-	166	355	624	1	208	1675
August		7,041	61	213	1	116	287	591	1	287	1557
September		6,956	79	187	5	179	184	303	2	116	1055
October		8,394	109	137	22	124	299	263	1	68	1023

Table V

Project Expense and Revenue

The project Financial Status report, page 26 covers the project period through October 31, 1964. The report indicates the approved total budget and the amounts contracted and expended during the period.

The report shows that after twelve month's operation of the 18-month demonstration period, 76% of total budget monies has been expended. It is noted, however, that construction costs in the amount of \$94,448 were expended prior to the start of actual demonstration operation. Subtracting this amount shows that after 12 months, or 66% of the projected 18-month term, 62% of other funds have been expended.

PARK 'N RIDE Project

Financial Status - October 31, 1964

Budget		Expended to October 31, 1964	Unexpended Balance
Description	Amount		
Staff salaries and other Administrative Costs	\$ 32,167.50	\$ 20,169.54	\$ 11,997.86
Construction Costs	94,448.48	94,448.48	0.00
Consultant Contracts Surveys & Evaluation	65,000.00	40,677.20	24,322.80
RR Operations Contract	29,020.00	16,042.82	12,977.18
Advertising and Promotion	<u>25,000.00</u>	<u>24,180.20</u>	<u>819.80</u>
Subtotal	\$245,635.88	\$195,518.24	\$ 50,117.64
Contingencies	<u>10,549.12</u>	<u>-</u>	<u>10,549.12</u>
Total Project Budget	\$256,185.00	\$195,518.24	\$ 60,666.76

A P P E N D I X

(Contents)

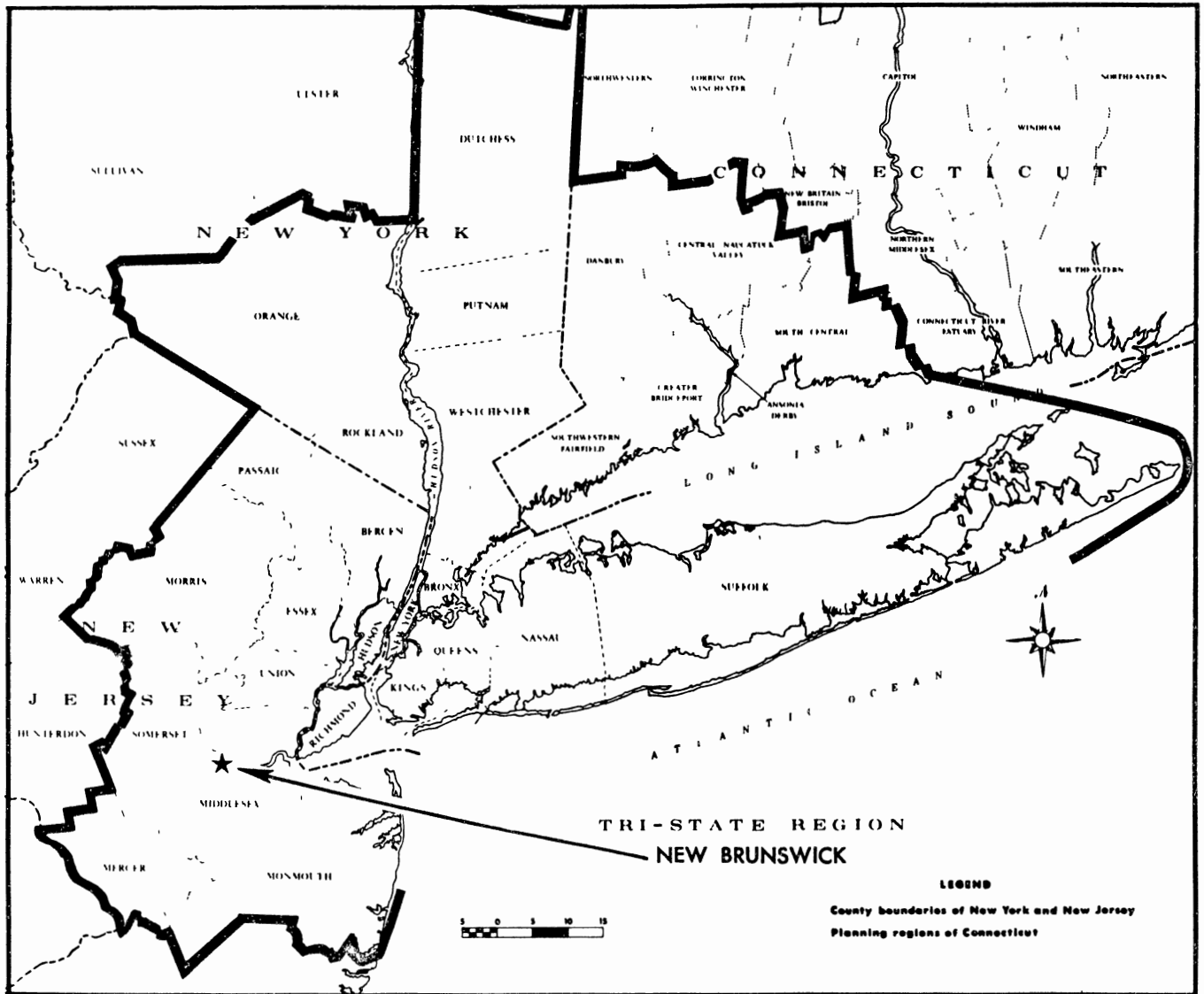
Tri-State Region Map

New Brunswick, N. J. Area Map

Jersey Avenue Station Plot Plan

On-Off Count by Train Data

# TRI-STATE REGION

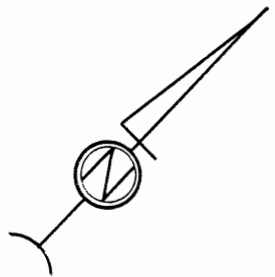




(RT. 91)

JERSEY AVE.

**JERSEY AVE. STATION**  
**PARK 'N' RIDE DEMONSTRATION PROJECT**  
 TRI-STATE TRANSPORTATION COMMITTEE  
 OCTOBER 1963



MILLSTONE BRANCH P.R.R.

ACCESS ROADWAY

RR. PROPERTY LINE

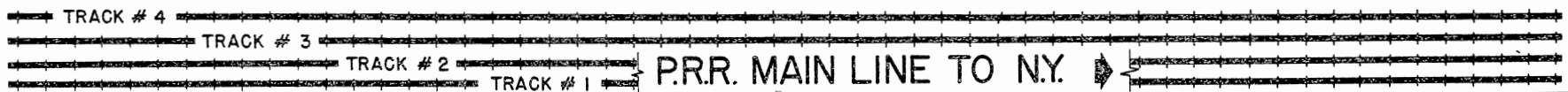
PLATFORM

STATION

TO MAIN LINE

PARKING AREA  
300 CARS

TRACK # 5 INDUSTRIAL SPUR



PARK 'N RIDE Project

Week ending January 18, 1964

Passenger On-Count by Train

Jersey Avenue Station

Train Number	Depart Jersey Ave.	Arrive N.Y. City	Total Passengers	Sun. 1/12	Mon. 1/13	Tues. 1/14	Wed. 1/15	Thurs. 1/16	Fri. 1/17	Sat. 1/18
3704	5:39 A.M.	6:35 A.M.	23	0	3	3	6	3	3	5
3710	6:57	7:52	221	-	47	47	44	42	41	-
3712	7:14	8:10	179	-	34	30	43	38	34	-
3716	7:47	8:35	271	-	53	32	52	62	72	-
3720	8:04	9:02	69	-	8	9	30	12	10	-
4244	8:15	9:10	2	2	-	-	-	-	-	-
3770	9:34	10:30	5	-	-	-	-	-	-	5
3726	10:04	11:00	43	-	8	12	6	13	4	-
3728	11:02	11:55	24	-	4	7	7	4	2	-
3730	11:44	12:35 P.M.	16	-	3	3	3	3	3	1
3736	12:32 P.M.	1:25	11	-	1	2	3	1	4	-
4246	12:40	1:35	0	0	-	-	-	-	-	-
3738	1:36	2:32	6	-	0	4	0	1	1	-
3740	2:09	3:05	12	0	3	1	4	2	2	0
3742	2:36	3:30	4	-	3	1	0	0	0	-
3744	3:11	4:10	13	-	6	0	3	2	2	-
4250	3:29	4:25	0	0	-	-	-	-	-	-
3746	3:34	4:30	33	-	3	7	7	8	8	-
3748	4:05	5:00	10	-	1	3	2	2	2	-
3750	4:38	5:34	17	-	4	3	4	2	4	-
4252	5:01	5:55	1	1	-	-	-	-	-	-
3752	5:17	6:14	12	-	0	1	6	1	4	0
4254	7:08	8:05	1	1	-	-	-	-	-	-
3760	7:52	8:45	4	0	0	0	1	2	1	-
3778	7:46	8:50	1	-	-	-	-	-	-	1
3762	8:27	9:35	0	-	0	0	0	0	0	-
3766	10:28	11:25	0	-	0	0	0	0	0	-
3780	10:33	11:25	0	-	-	-	-	-	-	0
3768	11:42	12:35 A.M.	<u>4</u>	<u>0</u>	<u>1</u>	<u>1</u>	<u>0</u>	<u>1</u>	<u>1</u>	<u>0</u>
	Total		982	4	182	166	221	199	198	12

PARK 'N RIDE Project

Week ending January 18, 1964

Passenger Off-Count by Train

Jersey Avenue Station

Train Number	Depart N.Y. City	Arrive Jersey Ave.	Total Passengers	Sun. 1/12	Mon. 1/13	Tues. 1/14	Wed. 1/15	Thurs. 1/16	Fri. 1/17	Sat. 1/18
3701	1:20 A.M.	2:12 A.M.	1	-	0	0	1	0	0	-
3703	6:35	7:29	31	-	10	3	7	5	6	-
4241	7:05	7:58	0	0	-	-	-	-	-	-
3705	7:25	8:22	25	-	6	7	4	5	3	-
4243	8:15	9:07	0	0	-	-	-	-	-	-
3781	9:20	10:25	0	-	-	-	-	-	-	0
3707	9:25	10:17	13	-	2	2	3	5	1	-
3711	10:15	11:06	0	-	0	0	0	0	0	-
3713	11:05	12:04 P.M.	3	-	1	0	1	1	0	0
3717	11:25	12:16	3	-	0	0	1	2	0	-
3719	11:55	12:46	17	-	7	2	1	4	3	-
3721	12:32 P.M.	1:42	7	-	3	0	2	1	1	-
4249	1:10	2:01	0	0	-	-	-	-	-	-
3725	1:40	2:30	11	-	3	2	4	2	0	-
3727	2:32	3:21	38	-	11	1	6	14	6	-
3729	3:02	3:53	24	-	6	6	5	3	4	-
3723	3:30	4:23	38	-	17	6	2	5	8	-
3731	4:10	4:58	55	-	8	10	14	12	11	-
3733	4:35	5:32	79	-	18	17	19	15	20	-
4251	4:55	6:03	0	0	-	-	-	-	-	-
3735	5:12	6:06	217	-	38	40	49	40	50	-
3737	5:32	6:29	92	-	10	18	22	18	24	-
3785	6:35	7:30	3	0	-	-	-	-	-	3
3745	6:40	7:34	37	-	5	4	10	6	12	-
3749	7:15	8:05	15	-	3	3	3	3	3	-
3753	8:05	8:58	18	4	1	4	3	3	3	-
3757	9:05	9:58	26	-	6	1	11	4	4	-
3787	9:10	10:03	0	-	-	-	-	-	-	0
3761	10:05	10:59	21	-	5	4	5	4	3	0
4255	10:10	11:03	0	0	-	-	-	-	-	-
3767	11:02	11:53	22	-	2	4	7	4	5	-
3789	11:35	12:30 A.M.	2	1	-	-	-	-	-	1
Total			798	5	162	134	180	156	167	4

PARK 'N RIDE Project

Week ending April 11, 1964

Passenger On-Count by Train

Jersey Avenue Station

Train Number	Depart Jersey Ave.	Arrive N.Y. City	Total Passengers	Sun. 4/5	Mon. 4/6	Tues. 4/7	Wed. 4/8	Thurs. 4/9	Fri. 4/10	Sat. 4/11
3704	5:39 A.M.	6:35 A.M.	48	0	9	9	9	7	7	7
3710	6:57	7:52	206	-	42	42	41	40	41	-
3712	7:14	8:10	154	-	35	30	31	33	25	-
3716	7:47	8:35	271	-	59	48	57	52	55	-
3720	8:04	9:02	68	-	13	15	12	16	12	-
4244	8:15	9:10	0	0	-	-	-	-	-	-
3770	9:34	10:30	0	-	-	-	-	-	-	0
3726	10:04	11:00	16	-	1	5	2	2	6	-
3728	11:02	11:55	9	-	2	1	4	1	1	-
3730	11:44	12:35 P.M.	12	-	2	2	2	2	2	2
3736	12:32 P.M.	1:25	4	-	0	1	1	0	2	-
4246	12:40	1:35	0	0	-	-	-	-	-	-
3738	1:36	2:32	9	-	0	4	3	0	2	-
3740	2:09	3:05	4	0	0	0	2	0	2	0
3742	2:36	3:30	5	-	1	0	2	1	1	-
3744	3:11	4:10	8	-	1	2	1	2	2	-
4250	3:29	4:25	0	0	-	-	-	-	-	-
3746	3:34	4:30	10	-	2	2	2	2	2	-
3748	4:05	5:00	18	-	3	5	4	3	3	-
3750	4:38	5:34	12	-	2	2	4	2	2	-
4252	5:01	5:55	0	0	-	-	-	-	-	-
3752	5:17	6:14	18	-	2	5	3	4	4	0
4254	7:08	8:05	0	0	-	-	-	-	-	-
3760	7:52	8:45	7	1	1	2	0	2	1	-
3778	7:46	8:50	0	-	-	-	-	-	-	0
3762	8:27	9:35	0	-	0	0	0	0	0	-
3766	10:28	11:25	0	-	0	0	0	0	0	-
3780	10:33	11:25	0	-	-	-	-	-	-	0
3768	11:42	12:35 A.M.	0	0	0	0	0	0	0	0
Total			879	1	175	175	180	169	170	9

PARK 'N RIDE Project

Week ending April 11, 1964

Passenger Off-Count by Train

Jersey Avenue Station

Train Number	Depart N.Y. City	Arrive Jersey Ave.	Total Passengers	Sun. 4/5	Mon. 4/6	Tues. 4/7	Wed. 4/8	Thurs. 4/9	Fri. 4/10	Sat. 4/11
3701	1:20 A.M.	2:12 A.M.	1	-	0	0	1	0	0	-
3703	6:35	7:29	20	-	4	2	4	5	5	-
4241	7:05	7:58	1	1	-	-	-	-	-	-
3705	7:25	8:22	16	-	5	3	2	4	2	-
4243	8:15	9:07	0	0	-	-	-	-	-	-
3781	9:20	10:25	0	-	-	-	-	-	-	0
3707	9:25	10:17	4	-	1	2	1	0	0	-
3711	10:15	11:06	0	-	0	0	0	0	0	-
3713	11:05	12:04 P.M.	3	-	3	0	0	0	0	0
3717	11:25	12:16	0	-	0	0	0	0	0	-
3719	11:55	12:46	11	-	2	2	2	3	2	-
3721	12:32 P.M.	1:42	4	-	0	0	2	1	1	-
4249	1:10	2:01		0	-	-	-	-	-	-
3725	1:40	2:30	9	-	1	2	0	2	4	-
3727	2:32	3:21	26	-	6	6	6	4	4	-
3729	3:02	3:53	25	-	5	6	6	4	4	-
3723	3:30	4:23	20	-	2	4	6	4	4	-
3731	4:10	4:58	73	-	12	16	14	17	14	-
3733	4:35	5:32	96	-	20	20	20	18	18	-
4251	4:55	6:03	0	0	-	-	-	-	-	-
3735	5:12	6:06	205	-	45	40	40	40	40	-
3737	5:32	6:29	116	-	17	29	30	15	25	-
3785	6:35	7:30	2	1	-	-	-	-	-	1
3745	6:40	7:34	47	-	8	7	9	11	12	-
3749	7:15	8:05	15	-	3	3	3	3	3	-
3753	8:05	8:58	20	0	4	4	4	4	4	-
3757	9:05	9:58	21	-	5	4	5	4	3	-
3787	9:10	10:03	0	-	-	-	-	-	-	0
3761	10:05	10:59	10	-	2	2	2	2	2	0
4255	10:10	11:03	0	0	-	-	-	-	-	-
3767	11:02	11:53	5	-	1	1	1	1	1	-
3789	11:35	12:30 A.M.	0	0	-	-	-	-	-	0
	Total		750	2	146	153	158	142	148	1

PARK 'N RIDE Project

Week ending July 25, 1964

Passenger On-Count by Train

Jersey Avenue Station

Train Number	Depart Jersey Ave.	Arrive N.Y. City	Total Passengers	Surf. 7/19	Mon. 7/20	Tues. 7/21	Wed. 7/22	Thurs. 7/23	Fri. 7/24	Sat. 7/25
3704	5:39 A.M.	6:35 A.M.	31	1	6	6	6	6	6	0
3706	6:07	7:07	44	-	7	12	7	8	10	-
3710	6:57	7:52	232	-	51	44	34	52	51	-
3712	7:14	8:10	165	-	33	34	35	32	31	-
3716	7:47	8:35	260	-	64	49	49	49	49	-
3720	8:04	9:02	92	-	20	20	21	16	15	-
4244	8:10	9:05	11	11	-	-	-	-	-	-
3724	9:15	10:05	93	-	27	13	29	21	3	-
3770	9:34	10:30	0	-	-	-	-	-	-	0
3726	10:04	11:00	48	-	8	18	8	14	0	-
3728	11:02	11:55	69	-	14	11	19	19	6	-
3730	11:44	12:35 P.M.	29	-	9	6	3	4	7	0
3736	12:32 P.M.	1:25	14	-	4	2	4	1	3	-
4246	12:40	1:35	0	0	-	-	-	-	-	-
3738	1:36	2:32	18	-	7	5	2	4	0	-
3740	2:09	3:05	15	1	0	1	6	5	0	2
3742	2:36	3:30	2	-	0	0	2	0	0	-
3744	3:10	4:10	15	-	0	6	2	2	5	-
4250	3:29	4:25	0	0	-	-	-	-	-	-
3746	3:34	4:30	6	-	0	0	2	2	2	-
3748	4:05	5:00	16	-	3	3	2	4	4	-
3750	4:38	5:34	35	-	9	9	6	5	6	-
4252	5:01	5:57	0	0	-	-	-	-	-	0
3752	5:17	6:14	3	-	0	0	1	0	2	-
4254	7:08	8:05	0	0	-	-	-	-	-	-
3758	7:22	8:15	0	-	0	0	0	0	0	-
3760	7:52	8:45	3	1	0	0	0	2	0	-
3778	7:46	8:50	0	-	-	-	-	-	-	0
3762	8:27	9:35	11	-	3	3	2	0	3	-
3766	10:28	11:25	13	-	3	4	1	3	2	-
3780	10:30	11:25	0	-	-	-	-	-	-	0
3768	11:42	12:35 A.M.	<u>13</u>	<u>2</u>	<u>3</u>	<u>3</u>	<u>2</u>	<u>3</u>	<u>0</u>	<u>0</u>
	Total		1238	16	271	249	243	252	205	2

PARK 'N RIDE Project

Week ending July 25, 1964

Passenger Off-Count by Train

Jersey Avenue Station

Train Number	Depart N.Y. City	Arrive Jersey Ave.	Total Passengers	Sun. 7/19	Mon. 7/20	Tues. 7/21	Wed. 7/22	Thurs. 7/23	Fri. 7/24	Sat. 7/25
3701	1:20 A.M.	2:12 A.M.	1	-	0	0	0	1	0	-
3703	6:35	7:29	15	-	2	2	2	4	5	-
4241	7:05	7:58	0	0	-	-	-	-	-	-
3705	7:37	8:28	24	-	5	4	8	4	3	-
4243	8:15	9:07	0	0	-	-	-	-	-	-
3707	8:25	9:21	1	-	0	0	1	0	0	-
3781	9:20	10:25	0	-	-	-	-	-	-	0
3709	9:25	10:17	6	-	1	0	1	3	1	-
3711	10:15	11:06	2	-	0	0	1	0	1	-
3783	11:05	11:56	0	-	-	-	-	-	-	0
3713	11:05	12:09 P.M.	4	-	3	0	0	1	0	-
3717	11:25	12:16	10	-	5	2	0	3	0	-
4247	11:40	12:57	0	0	-	-	-	-	-	-
3719	11:55	12:46	1	-	0	0	0	0	1	-
3721	12:32 P.M.	1:42	4	-	0	2	2	0	0	-
4249	1:10	2:01	0	0	-	-	-	-	-	-
3725	1:40	2:30	14	-	3	5	1	3	2	-
3727	2:32	3:21	21	-	3	4	5	4	5	-
3729	3:02	3:53	13	-	4	4	3	1	1	-
3723	3:30	4:23	35	-	9	9	8	8	1	-
3731	4:07	4:54	49	-	6	6	13	12	12	-
3733	4:34	5:33	145	-	37	30	26	26	26	-
4251	4:55	6:03	0	0	-	-	-	-	-	-
3735	5:12	6:06	197	-	37	40	40	40	40	-
3737	5:37	6:25	159	-	22	24	44	34	35	-
3741	5:50	6:48	55	-	12	13	12	0	18	-
3785	6:35	7:30	1	1	-	-	-	-	-	0
3745	6:40	7:35	48	-	7	10	10	11	10	-
3749	7:15	8:05	55	-	9	7	19	9	11	-
3753	8:05	8:58	58	4	8	20	12	10	4	-
3757	9:05	9:58	70	-	15	17	15	11	12	-
3787	9:10	10:03	0	-	-	-	-	-	-	0
3761	10:05	10:59	77	-	15	22	13	15	12	0
4255	10:10	11:03	9	9	-	-	-	-	-	-
3767	11:07	12:00	36	-	8	10	5	9	4	-
3789	11:35	12:30 A.M.	<u>1</u>	<u>0</u>	<u>-</u>	<u>-</u>	<u>-</u>	<u>-</u>	<u>-</u>	<u>1</u>
Total			1111	14	211	231	241	209	204	1

PARK 'N RIDE Project

Week ending October 12, 1964

Passenger On-Count by Train

Jersey Avenue Station

Train Number	Depart Jersey Ave.	Arrive N.Y. City	Weekly Total	Tues. 10/6	Wed. 10/7	Thurs. 10/8	Fri. 10/9	Sat. 10/10	Sun. 10/11	Mon. 10/12
3704	5:39 A.M.	6:35 A.M.	31	6	6	6	6	0	1	6
3706	6:07	7:07	70	19	7	12	19	-	-	13
3710	6:57	7:52	208	42	42	42	41	-	-	41
3712	7:14	8:10	208	42	52	43	43	-	-	28
3716	7:47	8:35	449	99	89	103	90	-	-	68
3720	8:04	9:02	102	24	22	18	20	-	-	18
4244	8:10	9:05	3	-	-	-	-	-	3	-
3724	9:15	10:05	58	10	5	6	14	-	-	23
3770	9:34	10:30	2	-	-	-	-	2	-	-
3726	10:04	11:00	25	7	3	5	5	-	-	5
3728	11:02	11:55	17	4	4	2	2	-	-	5
3730	11:44	12:35 P.M.	11	2	2	2	3	0	-	2
3736	12:32 P.M.	1:25	7	0	3	0	3	-	-	1
4246	12:40	1:35	0	-	-	-	-	-	0	-
3738	1:36	2:32	6	0	2	1	1	-	-	2
3740	2:09	3:05	8	0	2	0	2	1	2	1
3742	2:36	3:30	2	0	0	0	1	-	-	1
3744	3:10	4:10	11	1	3	2	2	-	-	3
4250	3:29	4:25	0	-	-	-	-	-	0	-
3746	3:34	4:30	9	2	2	2	2	-	-	1
3748	4:05	5:00	14	2	3	3	3	-	-	3
3750	4:38	5:34	24	6	4	4	4	-	-	6
4252	5:01	5:57	2	-	-	-	-	-	2	-
3752	5:17	6:14	15	3	3	3	3	-	-	3
4254	7:08	8:05	1	-	-	-	-	-	1	-
3758	7:22	8:15	2	0	0	0	2	-	-	0
3760	7:52	8:45	7	1	0	1	1	-	3	1
3778	7:46	8:50	0	-	-	-	-	0	-	-
3762	8:27	9:35	15	3	3	3	3	-	-	3
3766	10:28	11:25	10	3	1	4	1	-	-	1
3780	10:30	11:25	0	-	-	-	-	0	-	-
3768	11:42	12:35 A.M.	<u>15</u>	<u>3</u>	<u>3</u>	<u>3</u>	<u>3</u>	<u>0</u>	<u>0</u>	<u>3</u>
Total			1332	279	261	265	274	3	12	238

PARK 'N RIDE Project

Week ending October 12, 1964

Passenger Off-Count by Train

Jersey Avenue Station

Train Number	Depart N.Y. City	Arrive Jersey Ave.	Weekly Total	Tues. 10/6	Wed. 10/7	Thurs. 10/8	Fri. 10/9	Sat. 10/10	Sun. 10/11	Mon. 10/12
3701	1:20 A.M.	2:12 A.M.	5	0	0	0	4	-	-	1
3703	6:35	7:29	17	3	3	3	4	-	-	4
4241	7:05	7:58	1	-	-	-	-	-	1	-
3705	7:37	8:28	22	4	4	5	4	-	-	5
4243	8:15	9:07	0	-	-	-	-	-	0	-
3707	8:25	9:21	9	2	2	2	2	-	-	0
3781	9:20	10:25	0	-	-	-	-	0	-	-
3709	9:25	10:17	4	0	1	0	2	-	-	1
3711	10:15	11:06	7	2	1	2	1	-	-	1
3783	11:05	11:56	1	-	-	-	-	1	-	-
3713	11:05	12:09 P.M.	5	0	2	0	3	-	-	0
3717	11:25	12:16	6	0	2	0	2	-	-	2
4247	11:40	12:57	2	-	-	-	-	-	2	-
3719	11:55	12:46	3	2	0	1	0	-	-	0
3721	12:32 P.M.	1:42	9	1	1	4	2	-	-	1
4249	1:10	2:01	0	-	-	-	-	-	0	-
3725	1:40	2:30	17	3	3	2	3	-	-	6
3727	2:32	3:21	41	7	7	7	11	-	-	9
3729	3:02	3:53	22	4	6	4	4	-	-	4
3723	3:30	4:23	17	4	1	2	7	-	-	3
3731	4:07	4:54	52	7	24	7	7	-	-	7
3733	4:34	5:33	148	30	28	30	30	-	-	30
4251	4:55	6:03	0	-	-	-	-	-	0	-
3735	5:12	6:06	227	45	46	45	45	-	-	46
3737	5:37	6:25	243	58	50	52	46	-	-	37
3741	5:50	6:48	47	11	6	11	12	-	-	7
3785	6:35	7:30	3	-	-	-	-	0	3	-
3745	6:40	7:35	57	10	11	12	12	-	-	12
3749	7:15	8:05	75	15	15	15	15	-	-	15
3753	8:05	8:58	39	6	8	6	9	-	4	6
3757	9:05	9:08	54	9	10	11	12	-	-	12
3787	9:10	10:03	5	-	-	-	-	5	-	-
3761	10:05	10:59	48	6	12	10	10	0	-	10
4255	10:10	11:03	0	-	-	-	-	-	0	-
3767	11:07	12:00	19	4	5	5	3	-	-	2
3789	11:35	12:30 A.M.	9	-	-	-	-	0	9	-
			<u>1216</u>	<u>222</u>	<u>248</u>	<u>236</u>	<u>250</u>	<u>6</u>	<u>19</u>	<u>222</u>

# **PARK FREE AVOID TRAFFIC GO BY TRAIN**



to NEWARK and NEW YORK  
Use the convenient new

# **Jersey Ave. Station**

**NEW BRUNSWICK**

---

