

November 2021 Traffic Report

AVIATION DEPARTMENT

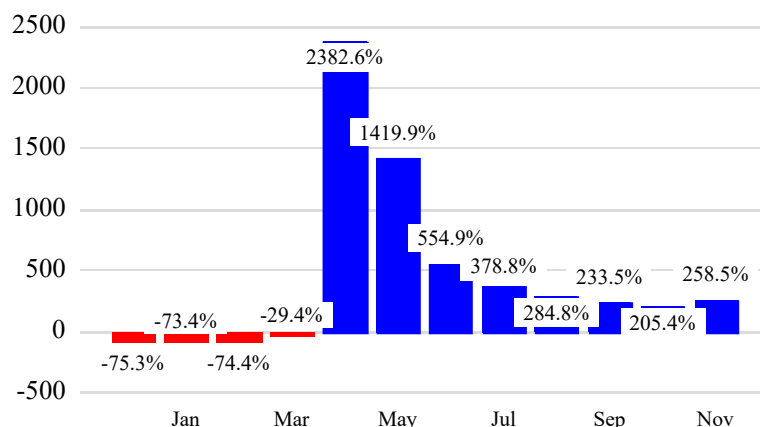
REGION



Revenue Passengers

	Curr Month	% Change	
	9,204,694	258.5%	▲
Domestic	6,933,055	257.0%	
International	2,271,639	263.1%	
Non-Revenue	251,970	121.4%	
Load Factors			
	Curr Month		
Domestic	75.6%		
International	70.2%		
		74.2%	Avg Load Factor

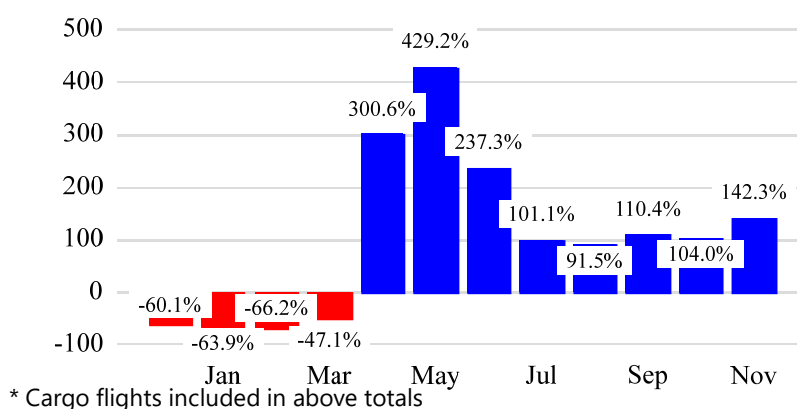
Year over Year % Change in Revenue Passengers - 12 Months



Total Flights

	Curr Month	% Change	
	96,308	134.3%	▲
Excl GA	93,658	142.3%	▲
Domestic	76,127	159.0%	
International	17,531	89.1%	
Gen Aviation	2,650	8.6%	
Cargo Flights*	3,823	-4.2%	

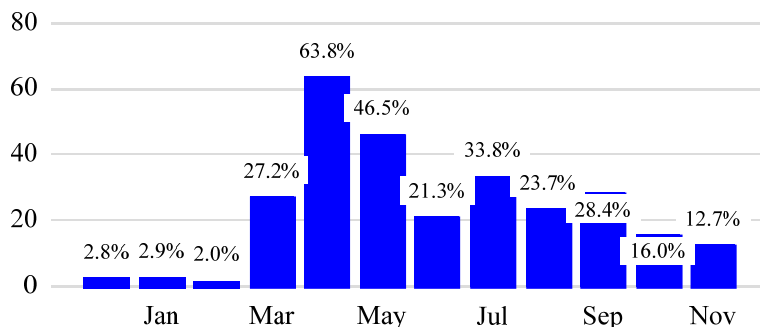
Year over Year % Change in Total Flights (Excl GA) - 12 Months



Cargo (Short Tons)

	Curr Month	% Change	
	202,384	12.7%	▲
Domestic	91,617	11.0%	
International	110,767	14.2%	
Mail	12,808	2.5%	

Year over Year % Change in Cargo - 12 Months



Top 5 Declines in Revenue Passengers by Airline

Airline	Pax Decline	% Decline
EASTERN	(4,805)	-52.0%
EVA	(851)	-36.0%

Top 5 Increases in Revenue Passengers by Airline

Airline	Pax Increase	% Increase
UNITED	1,665,279	206.0%
DELTA	1,480,269	285.0%
AMERICAN	1,095,407	414.0%
JETBLUE AIRWAYS	1,043,244	218.0%
SOUTHWEST AIRLINES	173,618	415.0%

Airport Summary Statistics

JFK Summary

	Current Month	YoY %
Total Revenue Pax	3,592,770	298.0
Total Flights Including GA	32,140	128.0
Total Cargo (Short Tons)	132,390	12.3

EWR Summary

	Current Month	YoY %
Total Revenue Pax	3,376,069	177.0
Total Flights Including GA	34,220	98.0
Total Cargo (Short Tons)	78,151	12.4

LGA Summary

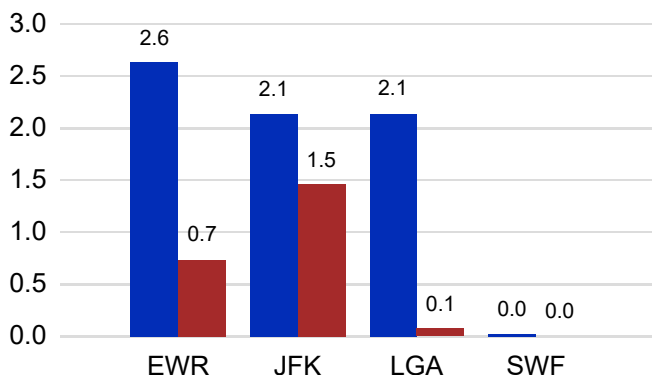
	Current Month	YoY %
Total Revenue Pax	2,217,536	398.0
Total Flights Including GA	28,204	252.0
Total Cargo (Short Tons)	675	-1.5

SWF Summary

	Current Month	YoY %
Total Revenue Pax	18,319	413.0
Total Flights Including GA	1,744	10.0
Total Cargo (Short Tons)	3,976	0.7

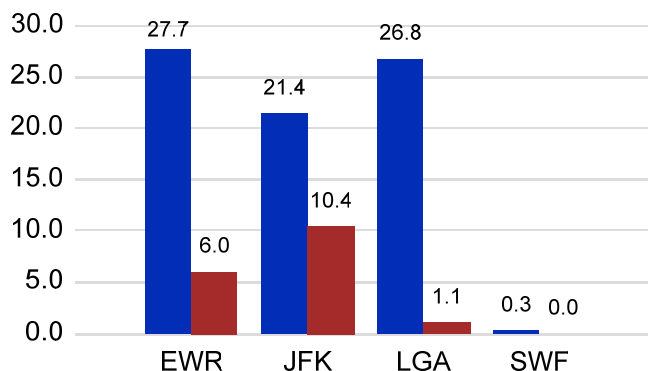
Total Passengers by Airport (Millions)

Domestic Passenger
International Passenger



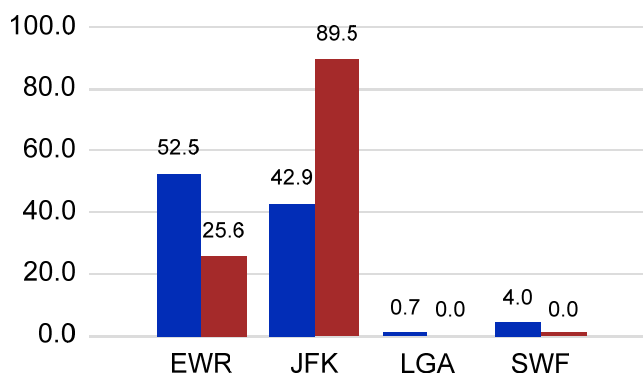
Total Flights by Airport (Thousands)

Domestic Total Flights
International Total Flights



Total Cargo by Airport (Thousands of Short Tons)

Total Domestic Cargo Mail
Total International Cargo Mail



12 Months Ending Passenger & Freight Statistics

Top 20 Airlines Ranking by Passengers & Freight: 12 Months Ending Nov 2021

Airline Name	Domestic	International	Total Pax	% of Tot	Airline Name	Short Tons	% of Tot
UNITED	13,603,649	3,994,588	17,598,237	25.43%	FEDERAL EXPRESS	451,373	19.86%
DELTA	13,750,208	2,344,032	16,094,240	23.25%	United	206,893	9.10%
JETBLUE AIRWAYS	9,674,362	4,037,613	13,711,975	19.81%	UNITED PARCEL	205,539	9.04%
AMERICAN	7,880,154	924,822	8,804,976	12.72%	DELTA	86,756	3.82%
SPIRIT AIRLINES	2,644,211	0	2,644,211	3.82%	ATLAS AIR	84,494	3.72%
SOUTHWEST AIRLINES	1,427,241		1,427,241	2.06%	KALITTA AIR LLC	80,660	3.55%
FRONTIER AIRLINES	894,481	42,765	937,246	1.35%	AIR TRANSPORT INT'L.(BAX Inc.)	80,635	3.55%
ALASKA AIRLINES	823,408		823,408	1.19%	AMERICAN	66,089	2.91%
COPA AIRLINES		576,192	576,192	0.83%	CATHAY PACIFIC	58,918	2.59%
TURKISH AIR		453,083	453,083	0.65%	KOREAN	58,654	2.58%
AIR CANADA		399,536	399,536	0.58%	CARGOLUX AIRLINES	57,880	2.55%
TACA INTERNATIONAL		343,291	343,291	0.50%	CHINA AIRLINES (CAL)	51,793	2.28%
EMIRATES AIRLINES		339,934	339,934	0.49%	ABX AIR INC	45,390	2.00%
QATAR AIRWAYS		284,415	284,415	0.41%	LUFTHANSA CARGO	36,153	1.59%
LUFTHANSA		242,586	242,586	0.35%	QATAR AIRWAYS	32,597	1.43%
AIR FRANCE		238,205	238,205	0.34%	VIRGIN ATLANTIC	30,361	1.34%
EL AL		233,842	233,842	0.34%	TURKISH AIR	29,870	1.31%
AEROMEXICO		231,130	231,130	0.33%	BRITISH AIRWAYS	26,592	1.17%
ALLEGiant AIR	228,245		228,245	0.33%	AIR CHINA INTERNATIONAL	25,340	1.11%
AIR INDIA		195,790	195,790	0.28%	AIR FRANCE	25,326	1.11%

Passengers & Freight by Market - 12 Months Ending

Market	Passengers	Freight (Short Tons)
TRANSATLANTIC	7,382,633	791,468
CANADA	506,219	2,104
CARIBBEAN + BERMUDA	5,668,428	12,858
CENTRAL AND SOUTH AMERICA	2,531,666	32,431
DOMESTIC	48,960,535	1,038,705
MEXICO	1,712,170	10,168
TRANSPACIFIC	318,109	375,760
PUERTO RICO	2,130,513	9,658

Additional Data

Airline Schedules (ADI): Non-Stop Destinations

	Region	Flights (Daily)	Cities
Domestic	Domestic	2391.9	99
	Puerto Rico	32.2	2
	Total	2,424.1	101.00
International	Canada	79.7	4
	Caribbean & Bermuda	137.5	23
	Central & South America	71.1	18
	Mexico	43.3	5
	Trans-Atlantic	186.2	46
	Trans-Pacific	14.9	9
	Total	532.6	105.00
Total		2,956.8	206.00

Airline Schedules (ADI): Carriers & Aircraft Type

	Aircraft Type	Flights (Daily)	Carriers
Domestic	Commuter	1060.9	5
	General Aviation	2.0	1
	Narrow Body	1267.8	10
	Wide Body	93.4	4
	Total	2,424.1	20.00
International	Commuter	66.7	6
	Narrow Body	258.9	19
	Unknown	0.0	1
	Wide Body	207.0	52
	Total	532.6	78.00
Total	Total	2,956.8	98.00

Passenger Demographics (ACI ASQ Surveys - 2019)

Connect

Local Origin/Destination	83.7%
Connecting	16.3%

Transport Mode

Bus/Shuttle	9.7%
Other	11.3%
Private/Company Car	42.0%
Rail/Subway	6.8%
Rental Car	10.1%
Taxi/Limo	20.1%

Trip Type

Business	21.9%
Leisure	78.1%

Annual Flights

1-2	49.7%
3-5	29.8%
6-10	12.6%
11-20	4.7%
21+	3.2%

Gender

F	47.6%
M	52.4%

Residency

United States	22.9%
Other	77.1%

Ground Transportation

	<u>Curr Month</u>	<u>% Change</u>
<i>Paid Parked Cars</i>	360,039	136.6
<i>GTC Bookings</i>	0	
<i>Airport Coach Passengers</i>	21,314	974.3
<i>Taxis Dispatched</i>	307,747	503.9

	<u>Curr Month</u>	<u>% Change</u>
<i>Total Air Train Passengers</i>	1,857,020	197.7
<i>Paid Howard Beach Passengers</i>	97,316	280.6
<i>Paid Jamaica Passengers</i>	318,034	305.3
<i>Paid EWR Passengers</i>	184,273	267.4
<i>On-Airport (Unpaid) Passengers</i>	1,257,397	167.8

Airlines for American Carriers (USA)

	<u>Curr Month</u>	<u>% Change</u>
<i>Freight:revenue ton miles (000)</i>	0	-100.0

Regional Airports: Other

	<u>Curr Month</u>	<u>% Change</u>
<i>TEB flight movements</i>	14,927	114.5
<i>ISP Total passengers</i>	116,532	230.2
<i>HPN Total passengers</i>	113,888	357.6