

Cancer Survival in New Jersey, 1979-1997

Prepared by

Xiaoling Niu, MS
Pamela K. Agovino, MPH
Lisa M. Roche, MPH, PhD
Betsy A. Kohler, MPH, CTR
Susan Van Loon, RN, CTR

Cancer Epidemiology Services
Public Health Services Branch
New Jersey Department of Health and Senior Services

Eddy A. Bresnitz, MD, MS
Deputy Commissioner/State Epidemiologist
New Jersey Department of Health and Senior Services

Fred M. Jacobs, M.D., J.D.
Commissioner
New Jersey Department of Health and Senior Services

Jon S. Corzine
Governor

Cancer Epidemiology Services
New Jersey Department of Health and Senior Services
PO Box 369
Trenton, NJ 08625-0369
(609) 588-3500
www.state.nj.us/health

September 2006

ACKNOWLEDGMENTS

The following staff of the New Jersey State Cancer Registry and the Cancer Surveillance Program of Cancer Epidemiology Services were involved in the collection, quality assurance and preparation of the data on incident cases of cancer in New Jersey:

Toshi Abe, MSW, CTR	Catherine Karnicky, CTR
Anne Marie Anepete, CTR	Harrine Katz, CTR
Pamela Beasley	Thuy Lam, MPH
Tara Blando	Henry Lewis, MPH
Donna Brown, CTR	Helen Martin, CTR
Stasia Burger, MS, CTR	Ilsia Martin, MS
Emiliano Cornago, MD	Kevin Masterson, CTR
Kathleen Diszler, RN, CTR	Carl C. Monetti
Thomas English, CTR	John Murphy, CTR
Lorraine Fernbach, CTR	Lisa Paddock, MPH
Ruthann Filipowicz	Maithili Patnaik, CTR
Raj Gona, MPH	Theresa Pavlovcak, CTR
Maria Halama, MD, CTR	Karen Pawlish, MPH, ScD
Essam Hanani, MD	Barbara Pingitor
Marilyn Hansen, CTR	Gladys Pyatt-Dickson, CTR
Kevin Henry, PhD	Karen Robinson-Frasier, CTR
Joan Hess, RN, CTR	Antonio Savillo, MD, CTR
Margaret Hodnicki, RN, CTR	Suzanne Schwartz, MS, CTR
Yvette Humphries	Rekha Tharwani, MD, CTR
Nicole Jackson	Celia Troisi, CTR
Jamal Johnson, BA	Helen Weiss, RN, CTR
Linda Johnson, CTR	Michael Wellins
Anna Jones	Homer Wilcox III

We also acknowledge New Jersey hospitals, laboratories, physicians, dentists, and the states of Delaware, Florida, Maryland, New York, North Carolina, and Pennsylvania who reported cancer cases to the New Jersey State Cancer Registry.

Cancer Epidemiology Services, including the New Jersey State Cancer Registry, receives support from the Surveillance, Epidemiology, and End Results Program of the National Cancer Institute under contract N01-PC-45025-40, the National Program of Cancer Registries, Centers for Disease Control and Prevention under cooperative agreement U55/CCU221914, and the State of New Jersey.

TABLE OF CONTENTS

Introduction..... 1

Summary.....3

Five-Year Relative Survival Rates, 1994-1997..... 6

 New Jersey versus the U.S. by Race and Sex..... 6

 New Jersey by Sex and Race 16

 New Jersey by Age, Race and Sex 20

 New Jersey by Stage at Diagnosis, Race and Sex..... 26

New Jersey Five-Year Relative Survival Trends..... 30

 By Race and Sex, 1979-1997..... 30

 By Stage at Diagnosis and Race, 1984-1997..... 34

Survival Curves for Selected Cancers by Stage at Diagnosis and Race..... 37

Trends in Percent of Cancers Diagnosed at the Local Stage by Race, 1984-1997..... 40

Technical Notes.....42

References..... 46

Appendix A: Cancer Survival Rate Tables..... 47

Appendix B: Vital Status Follow-Up Percents 64

Appendix A: Cancer Survival Rate Tables

Table 1: Cancer Five-Year Relative Survival Rates, All Races and Both Sexes
New Jersey and the U.S. 1994-1997 49

Table 2: Cancer Five-Year Relative Survival Rates, White Males
New Jersey and the U.S. 1994-1997 50

Table 3: Cancer Five-Year Relative Survival Rates, White Females
New Jersey and the U.S. 1994-1997 51

Table 4: Cancer Five-Year Relative Survival Rates, Black Males
New Jersey and the U.S. 1994-1997 52

Table 5: Cancer Five-Year Relative Survival Rates, Black Females
New Jersey and the U.S. 1994-1997 53

Table 6: Cancer Five-Year Relative Survival Rates by Race, Males,
New Jersey, 1994-1997 54

Table 7: Cancer Five-Year Relative Survival Rates by Race, Females,
New Jersey 1994-1997 56

Table 8: Cancer Five-Year Relative Survival Rates for Selected Cancers
by Age, Race and Sex, New Jersey, 1994-1997 58

Table 9: Five-Year Relative Survival Rates for Selected Cancers by Race, Sex
and Stage, New Jersey, 1994-1997 59

Table 10: Five-Year Relative Survival Trends for Selected Cancers by Race, Sex,
and Years, New Jersey, 1979-1997 60

Table 11: Female Breast Cancer Five-Year Relative Survival Trends by Stage at
Diagnosis and Race, New Jersey, 1984-1997 61

Table 12: Prostate Cancer Five-Year Relative Survival Trends by Stage at Diagnosis
and Race, New Jersey, 1984-1997 61

Table 13: Female Breast Cancer Relative Survival Rates by Years Since Diagnosis,
Stage and Race, New Jersey, 1984-1997 62

Table 14: Prostate Cancer Five-Year Relative Survival Rates by Years Since Diagnosis,
Stage and Race, New Jersey, 1984-1997 63

Appendix B: Vital Status Follow-Up Percents

Vital Status Follow-Up Percents for All Cases Included in the Survival Cohort,
by Year of Diagnosis, Race, Sex and Age, New Jersey, 1979-1997 64



INTRODUCTION

This is the first comprehensive presentation of cancer survival rates for New Jersey residents based on data from the New Jersey State Cancer Registry (NJSCR), the population-based cancer registry for New Jersey. The three commonly used measures to assess the impact of cancer in the general population are incidence rate, mortality rate and estimated survival rate. Cancer Epidemiology Services (CES) of the New Jersey Department of Health and Senior Services (NJDHSS) has published a series of cancer incidence and mortality reports using NJSCR data. The purpose of this report is to provide survival data to help assess the burden of cancer, as well as to assist with improving cancer detection and treatment in New Jersey.

Included in this report are survival data on 608,892 invasive (*in situ* cancers were not included except *in situ* bladder cancer) first primary cancers diagnosed in 1979 to 1997 among New Jersey residents. About 50 percent of these cancers occurred in men and 50 percent occurred in women. Whites comprised about 89 percent and blacks about 10 percent of the total cancer cases. All patients' vital status was determined through December 2002, providing at least five years of follow-up time since diagnosis.

In the report, five-year relative survival rates for New Jersey cases diagnosed in 1994-1997 are compared to survival rates for U.S. cases diagnosed in 1994-1997 for all cancers combined and many specific cancer types for all races and sexes and four race-sex groups. Five-year relative survival rates also are presented for New Jersey men and women by race, age and stage for all cancers combined and the most common cancer types (female breast, cervical, colorectal, lung, melanoma of the skin and prostate) for the diagnosis period 1994-1997.

Five-year relative survival rates for the most common cancer types (female breast, cervical, colorectal, lung, melanoma of the skin and prostate) were examined for changes over time, using four time periods, 1979-1983, 1984-1988, 1989-1993, and 1994-1997. Nineteen year survival curves were calculated for the two most common cancers diagnosed in 1984-1997, breast cancer in women and prostate cancer.

New Jersey cancer incidence and mortality data are available from the Cancer Epidemiology Services office or on our website <http://www.state.nj.us/health/cancer/statistics.htm>, including:

- *Cancer Incidence and Mortality in New Jersey 1999-2003*;
- *Cancer Incidence Rates in New Jersey's Ten Most Populated Municipalities 1998-2002*;
- *Trends in Cancer Incidence and Mortality in New Jersey, 1979-2002*;

Our new interactive cancer data mapping application provides incidence and mortality counts and rates statewide and at the county level by year, sex, race, and ethnicity for the years 1999-2003 at <http://www.cancer-rates.info/nj/>. This application will be updated as each additional year's data become complete. Other New Jersey and U.S. cancer data can be found on the following websites:

- Cancer Control Planet <http://cancercontrolplanet.cancer.gov/>
- North American Association of Central Cancer Registries' *Cancer in North America 1998-2002*
http://www.naaccr.org/index.asp?Col_SectionKey=11&Col_ContentID=49
- Surveillance, Epidemiology and End Results Program (SEER) Cancer Statistics
<http://surveillance.cancer.gov/statistics/>

Other publications that present and discuss cancer survival data are listed in the References section of this report (references 1-5).

SUMMARY

Cancer Survival in New Jersey Compared to the U.S.

In general, the New Jersey five-year relative cancer survival rates were similar to the U.S. rates for the diagnosis years 1994-1997. For all cancers combined, the New Jersey five-year relative survival rate was 61 percent, while the U.S. rate was higher at 64 percent. For specific cancer types, the New Jersey rates were very high for prostate cancer (98%), thyroid cancer (94%), female breast cancer (85%), and Hodgkin lymphoma (85%) and very low for pancreatic cancer (6%), liver cancer (7%), esophageal cancer (13%), and lung cancer (14.5%). The U.S. rates for these cancers were similar. Cancers with the greatest differences were higher ovarian cancer survival rates in New Jersey and lower survival rates for cancers of the cervix, mouth (oral cavity), endometrial, brain, and melanoma of the skin in New Jersey. The differences in survival rates between New Jersey and the U.S. were relatively small for each of the four race-sex groups (white men, white women, black men, and black women).

Cancer Survival in New Jersey by Sex and Race

Among New Jersey residents diagnosed with cancer in 1994-1997, men had slightly higher five-year relative survival rates than women - 62 percent versus 60 percent. Women had higher survival rates for non-Hodgkin lymphoma, melanoma of the skin and cancers of the lung, thyroid, and mouth (oral cavity) than men. Men had higher five-year relative survival rates for cancers of the bladder and larynx compared to women.

White men had substantially higher five-year relative survival rates for all cancers combined diagnosed in 1994-1997 compared to black men (63% vs. 54%); as did white women compared to black women (60% vs. 51%). Black men had lower survival rates than white men for each specific cancer type except myeloma and brain. The cancers with the greatest difference in cancer survival between black and white men were bladder, melanoma of the skin, colorectal, and leukemia. Black women had lower survival rates than white women for each specific cancer type except myeloma, brain, stomach, liver and pancreas. The cancers with the greatest difference in cancer survival between black and white women were breast, endometrial, bladder, cervical, colorectal, and mouth (oral cavity).

Cancer Survival in New Jersey by Age, Race, and Sex

The five-year relative survival rate for all cancers combined diagnosed in 1994-1997 varied among five age groups (15-44, 45-54, 55-64, 65-74, and 75 and older) in each sex-race group. Among both black women and white women the survival rates consistently decreased with each older age group, and black women's survival rates were lower than white women's in each age group. The survival rates among the white men's age groups were similar to each other with the lowest rates in the 45-54 and 75 and over age groups. The age pattern was very different for black men - the survival rates increased in each older age group except in the oldest age group. However, similar to women, black men's survival rates were lower than white men's in each age group and black men between the ages of 15 and 44 had the lowest five-year relative survival

rate of any age-sex-race group. There was less variability in the five-year relative survival rates among the age groups in each sex-race group for five of the six most common cancers (female breast, colorectal, lung, melanoma of the skin, and prostate) than for all cancers combined; cervical cancer showed similar variability to all cancers combined. Generally, blacks had lower five-year relative survival rates than whites in every age group for these cancers (except no survival rates for blacks were calculated for melanoma of the skin due to low numbers of cases).

Cancer Survival in New Jersey by Stage at Diagnosis, Race and Sex

For the six most common cancers diagnosed among New Jersey residents in 1994-1997, female breast, cervical, colorectal, lung, melanoma of the skin, and prostate, the five-year relative survival rates were much higher for local stage cancers than for regional or distant stage cancers. The survival rates for these cancers were between 80 percent and 100 percent for local stage cancer (except for lung cancer) and under 30 percent for distant stage cancer in all four sex-race groups. Among cases diagnosed at the same stage, whites had higher five-year relative survival rates than blacks.

Cancer Survival Time Trends in New Jersey by Race and Sex

For white men and women, the five-year relative survival rates significantly improved from the 1979-1983 time period to the 1994-1997 time period for all cancers combined and the common cancers - female breast, cervical, colorectal, lung, melanoma of the skin, and prostate. The five-year relative survival rates also significantly improved among black men and women for all cancers combined, and for the most common cancer types except cervical cancer and lung cancer. The greatest improvement was in prostate cancer.

Cancer Survival Time Trends in New Jersey by Stage at Diagnosis and Race

The five-year relative survival rates improved from 1984 to 1997 for black women and white women with breast cancer diagnosed at the local or regional stage, but did not improve for women of either race diagnosed at the distant stage. Black women's survival remained lower than white women's for each stage at diagnosis. For prostate cancer, the five-year survival rates also increased from 1984 to 1997 to nearly 100% for black men and white men diagnosed at the local and regional stages. However, the five-year survival rate did not improve for men of either race diagnosed with distant stage prostate cancer.

Survival Curves for Selected Cancers in New Jersey by Stage at Diagnosis and Race

The relative survival rate for women with breast cancer diagnosed in 1984-1997 declined steadily for each additional year after diagnosis (up to nineteen years) and black women had lower survival rates than white women at each year after diagnosis. This pattern held for breast cancers diagnosed at each stage, but the difference in survival between white and black women was most apparent for breast cancer diagnosed at the regional stage.

Among men with prostate cancer, the relative survival rate also declined steadily from one year to nineteen years after diagnosis, and the gap between white and black men widened with the

number of years since diagnosis. This was especially true for prostate cancer diagnosed at the local and regional stages.

Trends in Percent Breast and Prostate Cancers Diagnosed at Local Stage by Race

From 1984-1997 breast cancer diagnosed at the local stage increased from 47% to 58% for white women and from 46% to 50% for black women. From 1984-1997 prostate cancer diagnosed at the local stage has increased from 58% to 71% for white men and from 53% to 70% for black men. (See Tables 1 and 2 on pages 40-41 for detailed data.)

Conclusions

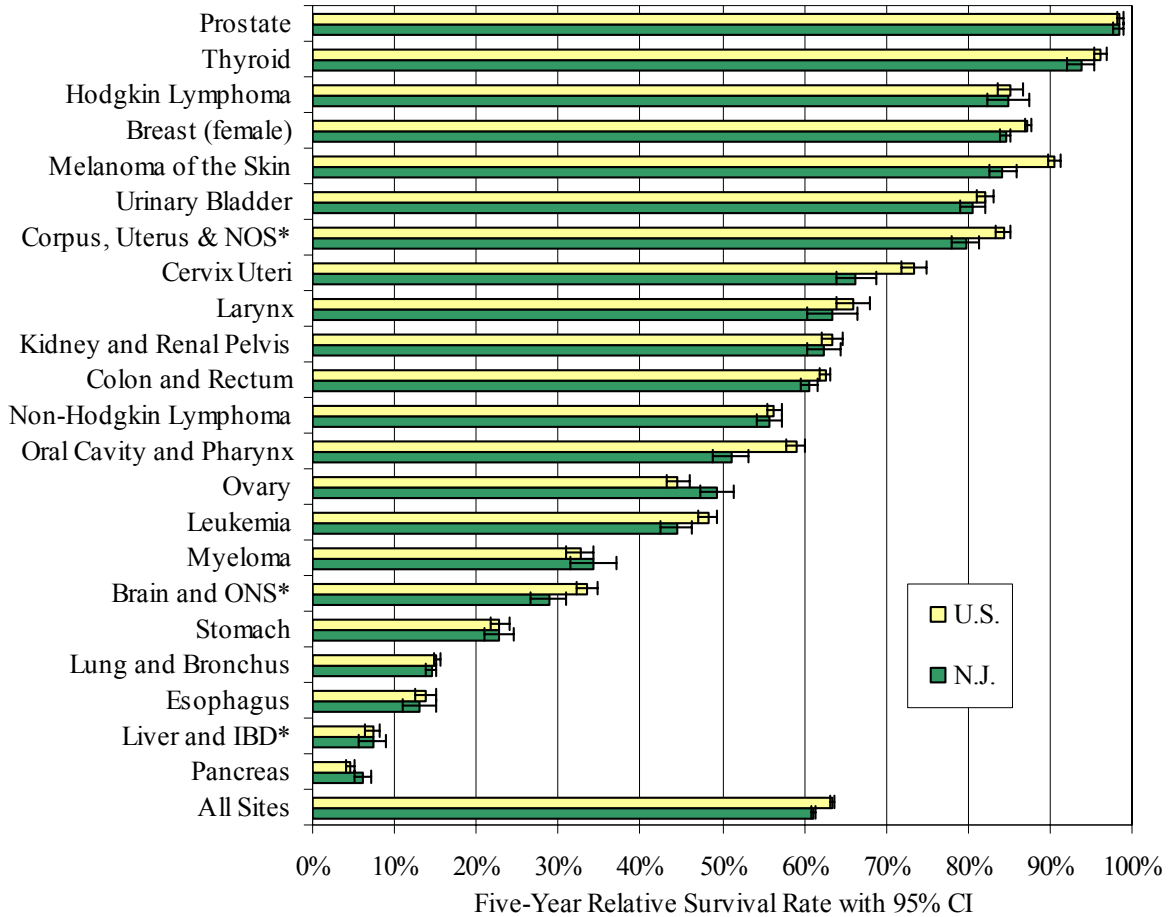
New Jersey five-year relative survival rates varied greatly depending on type of cancer, sex, race, age, and stage at diagnosis. Five-year relative survival rates improved during the past 20 years, especially for cancers diagnosed at the local and regional stages. However, disparities in cancer survival continue to exist between blacks and whites and, to a lesser extent, between men and women.

FIVE-YEAR RELATIVE SURVIVAL RATES, 1994-1997

New Jersey versus the U.S. by Race and Sex

The five-year relative survival rates with 95 percent confidence intervals are presented for New Jersey and the U.S. for diagnosis years 1994-1997. (See Figures 1 to 5 below and Tables 1 to 5 in Appendix A.)

**Figure 1: Five-Year Relative Survival Rates, All Races and Both Sexes
New Jersey and the U.S., 1994-1997**



*NOS: Not Otherwise Specified. ONS: Other Nervous System. IBD: Intrahepatic Bile Duct.
|——| : 95% Confidence Interval.

Data sources: New Jersey data - New Jersey State Cancer Registry, New Jersey Department of Health and Senior Services; U.S. data - Surveillance, Epidemiology, and End Results (SEER) Program, National Cancer Institute.

Includes invasive cancers only, except *in situ* bladder cancers are included.

U.S. survival data are based on men and women diagnosed in 1994-1997 and followed through December 2002.

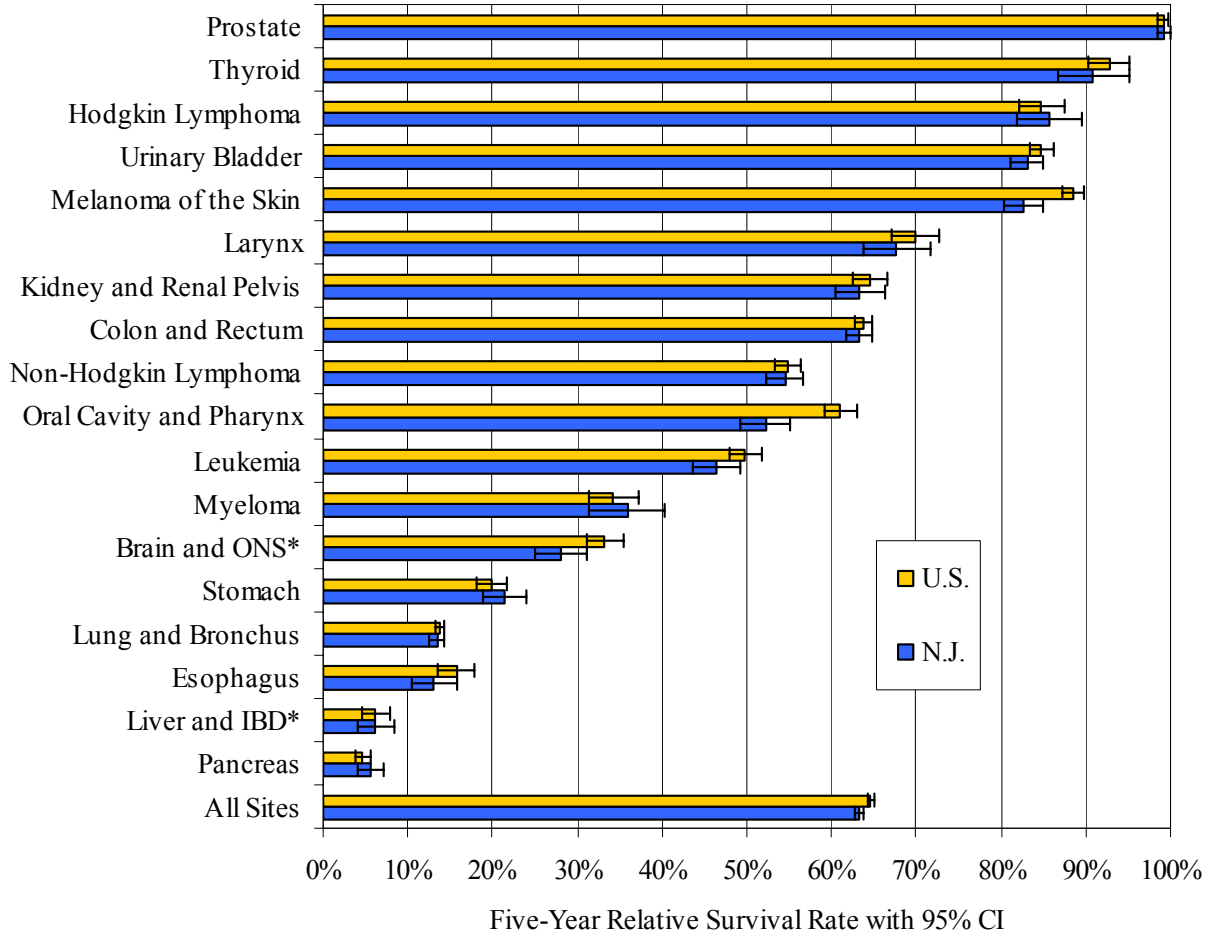
New Jersey survival data are based on 144,624 men and women diagnosed with a reportable cancer in 1994-1997 and followed through December 2002.

- The New Jersey five-year relative survival rates ranged from 98 percent for prostate cancer to 6 percent for pancreatic cancer.
- The five cancers with the best five-year relative survival for both New Jersey and the U.S. were prostate, thyroid, Hodgkin lymphoma, female breast and melanoma of the skin.
- The five cancers with the poorest five-year relative survival for both New Jersey and the U.S. were pancreas, liver and intrahepatic bile duct, esophagus, lung, and stomach.
- In general, New Jersey five-year relative survival rates were similar to the U.S. rates. The greatest differences were that New Jersey survival rates were higher than U.S. survival rates for ovarian cancer and lower than the U.S. rates for cervical cancer, oral cancer, melanoma of the skin, endometrial (corpus, uterus NOS) cancer, brain cancer, and all cancers combined.

See Table 1 in Appendix A for detailed data.



**Figure 2: Five-Year Relative Survival Rates, White Males
New Jersey and U.S., 1994-1997**



* ONS: Other Nervous System. IBD: Intrahepatic Bile Duct.

|——| : 95% Confidence Interval.

Data sources: New Jersey data - New Jersey State Cancer Registry, New Jersey Department of Health and Senior Services; U.S. data - Surveillance, Epidemiology, and End Results (SEER) Program, National Cancer Institute.

Includes invasive cancers only, except *in situ* bladder cancers are included.

U.S. survival data are based on white men diagnosed in 1994-1997 and followed through December 2002.

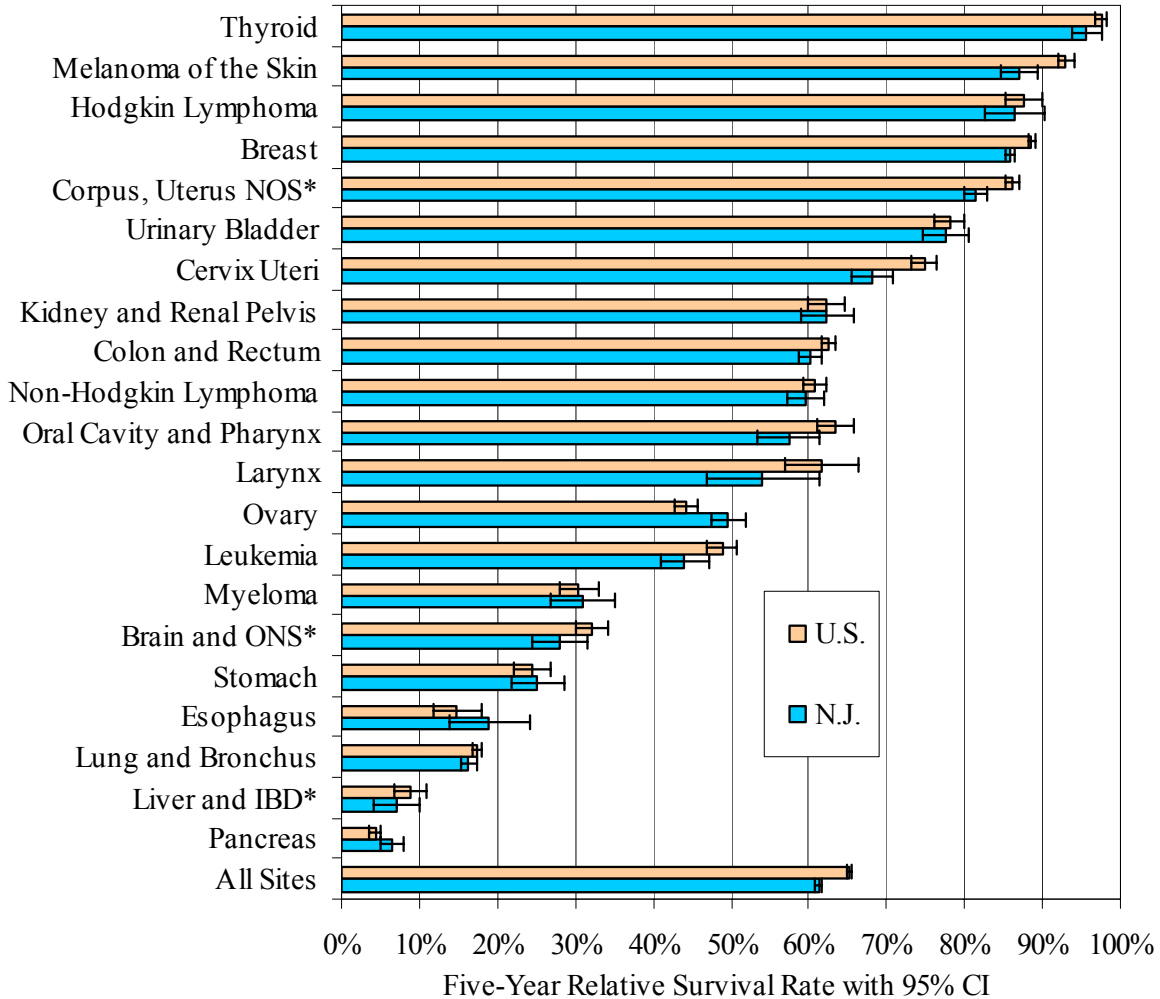
New Jersey survival data are based on 64,249 white men diagnosed with a reportable cancer in 1994-1997 and followed through December 2002.

- For white men, the five cancers with the best five-year relative survival rates for both New Jersey and the U.S. were prostate, thyroid, Hodgkin lymphoma, urinary bladder and melanoma of the skin.
- For white men, the five cancers with the poorest five-year relative survival rates for both New Jersey and the U.S. were pancreas, liver and intrahepatic bile duct, esophagus, lung, and stomach.
- The five-year relative survival rates for white men were lower in New Jersey compared to the U.S. for all cancers combined, oral cavity and pharynx cancer, brain cancer, and melanoma of the skin.

See Table 2 in Appendix A for detailed data.



**Figure 3: Five-Year Relative Survival Rates, White Females
New Jersey and U.S., 1994-1997**



*NOS: Not Otherwise Specified. ONS: Other Nervous System. IBD: Intrahepatic Bile Duct.
|——| : 95% Confidence Interval.

Data sources: New Jersey data - New Jersey State Cancer Registry, New Jersey Department of Health and Senior Services; U.S. data - Surveillance, Epidemiology, and End Results (SEER) Program, National Cancer Institute.

Includes invasive cancers only, except *in situ* bladder cancers are included.

U.S. survival data are based on white women diagnosed in 1994-1997 and followed through December 2002.

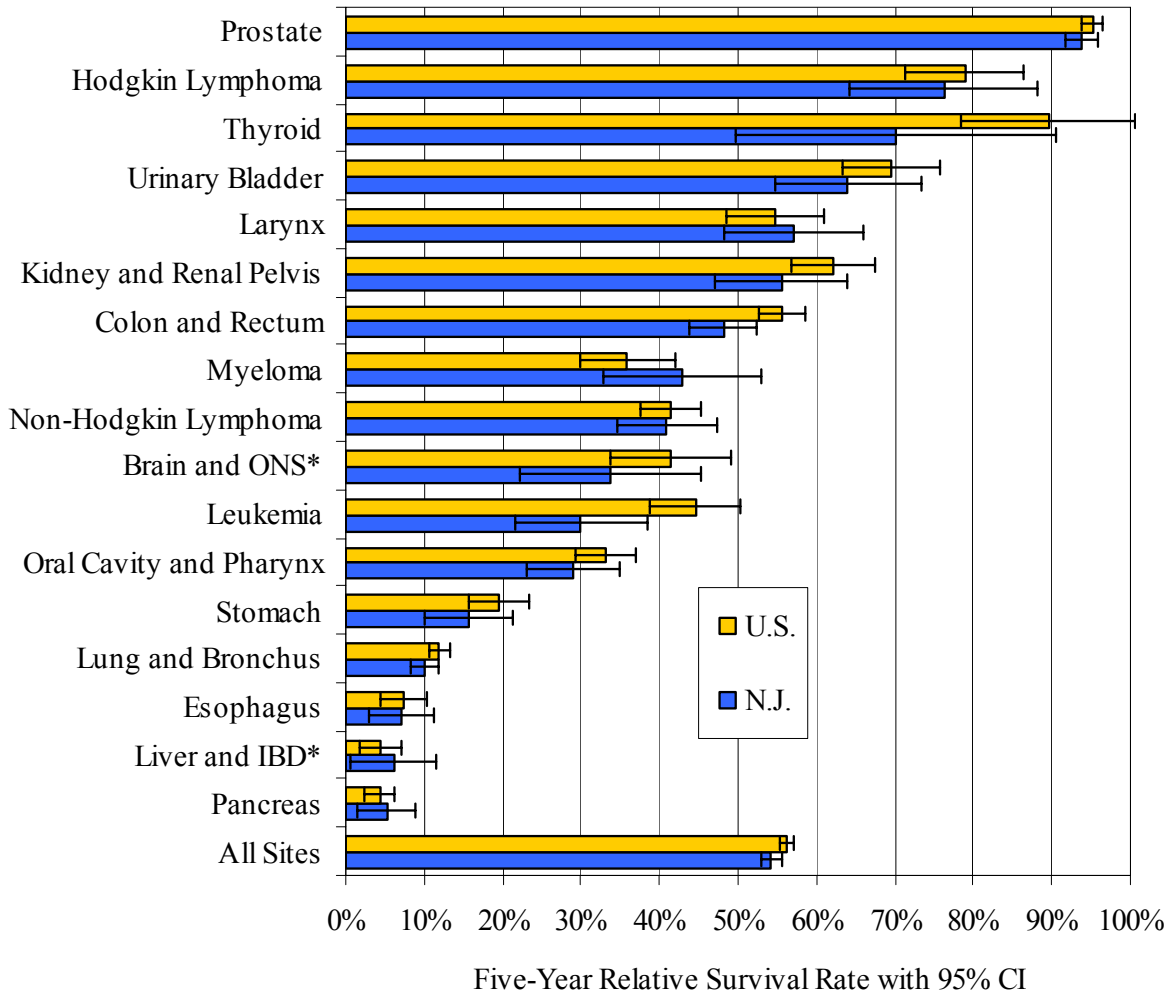
New Jersey survival data are based on 62,030 white women diagnosed with a reportable cancer in 1994-1997 and followed through December 2002.

- For white women, the five cancers with the best five-year relative survival for both New Jersey and the U.S. were thyroid, melanoma of the skin, Hodgkin lymphoma, breast and endometrial (corpus, uterus NOS).
- For white women, the five cancers with the poorest five-year relative survival for both New Jersey and the U.S. were pancreas, liver and intrahepatic bile duct, lung, esophagus and stomach.
- The five-year relative survival rates for white women were higher for ovarian cancer and pancreatic cancer in New Jersey than in the U.S.
- The five-year relative survival rates for white women were lower in New Jersey compared to the U.S. for all cancers combined, leukemia, melanoma of the skin and cancers of the breast, endometrium (corpus uterus, NOS) and cervix.

See Table 3 in Appendix A for detailed data.



**Figure 4: Five-Year Relative Survival Rates, Black Males
New Jersey and U.S., 1994-1997**



*ONS: Other Nervous System. IBD: Intrahepatic Bile Duct.

|——| : 95% Confidence Interval.

Data sources: New Jersey data - New Jersey State Cancer Registry, New Jersey Department of Health and Senior Services; U.S. data - Surveillance, Epidemiology, and End Results (SEER) Program, National Cancer Institute.

Includes invasive cancers only, except *in situ* bladder cancers are included.

U.S. survival data are based on black men diagnosed in 1994-1997 and followed through December 2002.

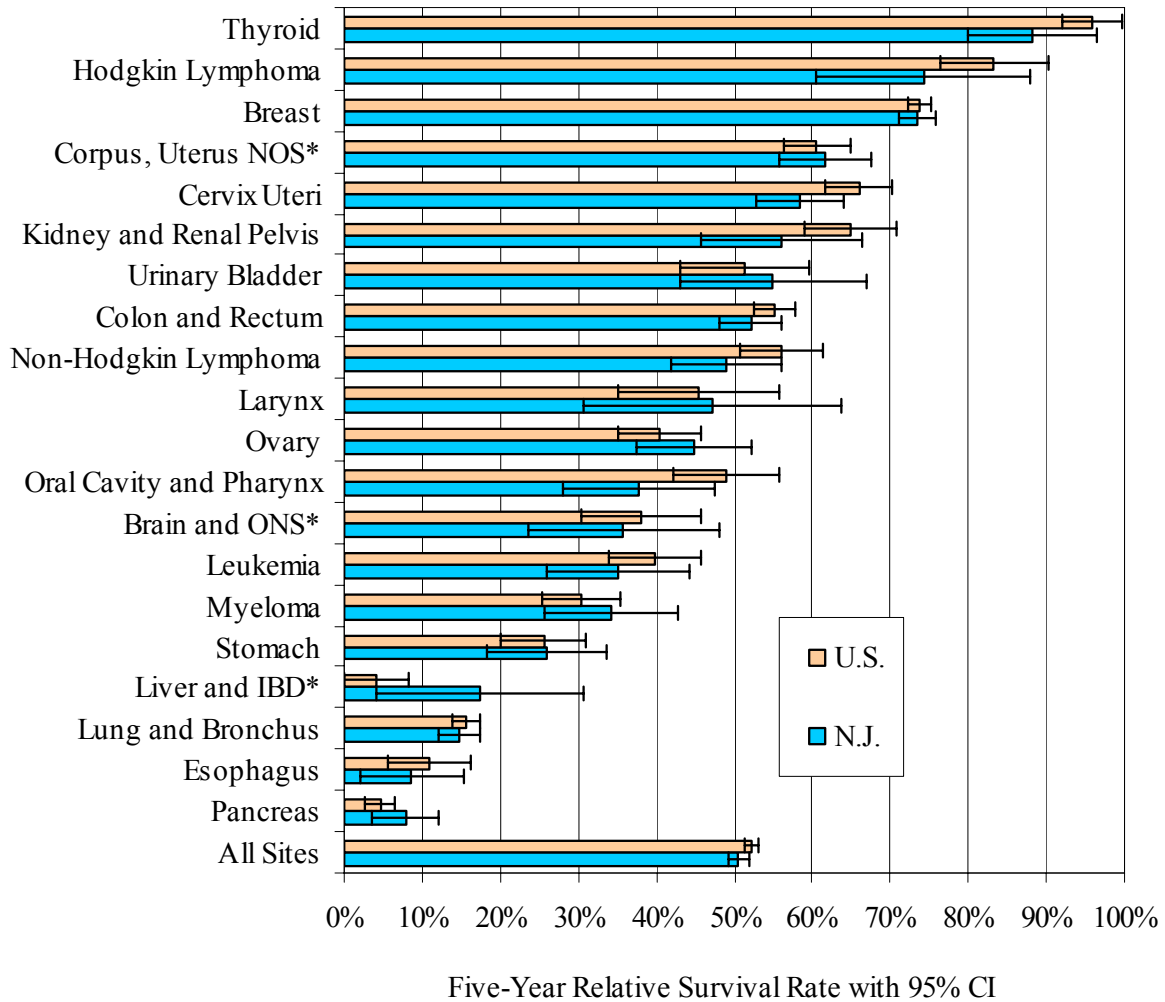
New Jersey survival data are based on 8,526 black men diagnosed with a reportable cancer in 1994-1997 and followed through December 2002.

- For black men, the five cancers with the best five-year relative survival in New Jersey were prostate, Hodgkin lymphoma, thyroid, urinary bladder and larynx. In the U.S., the five cancers with the best five-year relative survival were the same except kidney cancer was fifth instead of larynx.
- For black men, the five cancers with the poorest five-year relative survival for both New Jersey and the U.S. were pancreas, liver and intrahepatic bile duct, esophagus, lung, and stomach.

See Table 4 in Appendix A for detailed data.



**Figure 5: Five-Year Relative Survival Rates, Black Females
New Jersey and U.S., 1994-1997**



*NOS: Not Otherwise Specified. ONS: Other Nervous System. IBD: Intrahepatic Bile Duct.
 |——| : 95% Confidence Interval.

Data sources: New Jersey data - New Jersey State Cancer Registry, New Jersey Department of Health and Senior Services; U.S. data - Surveillance, Epidemiology, and End Results (SEER) Program, National Cancer Institute.

Includes invasive cancers only, except *in situ* bladder cancers are included.

U.S. survival data are based on black women diagnosed in 1994-1997 and followed through December 2002.

New Jersey survival data are based on 7,118 black women diagnosed with a reportable cancer in 1994-1997 and followed through December 2002.

- For black women, the five cancers with the best five-year relative survival in New Jersey were thyroid, Hodgkin lymphoma, breast, endometrial (corpus, uterus NOS), and cervix. In the U.S., the five cancers with the best five-year relative survival were thyroid, Hodgkin lymphoma, breast, cervix, and kidney.
- For black women, the five cancers with the poorest five-year relative survival for both New Jersey and the U.S. were pancreas, esophagus, lung, liver and intrahepatic bile duct and stomach.

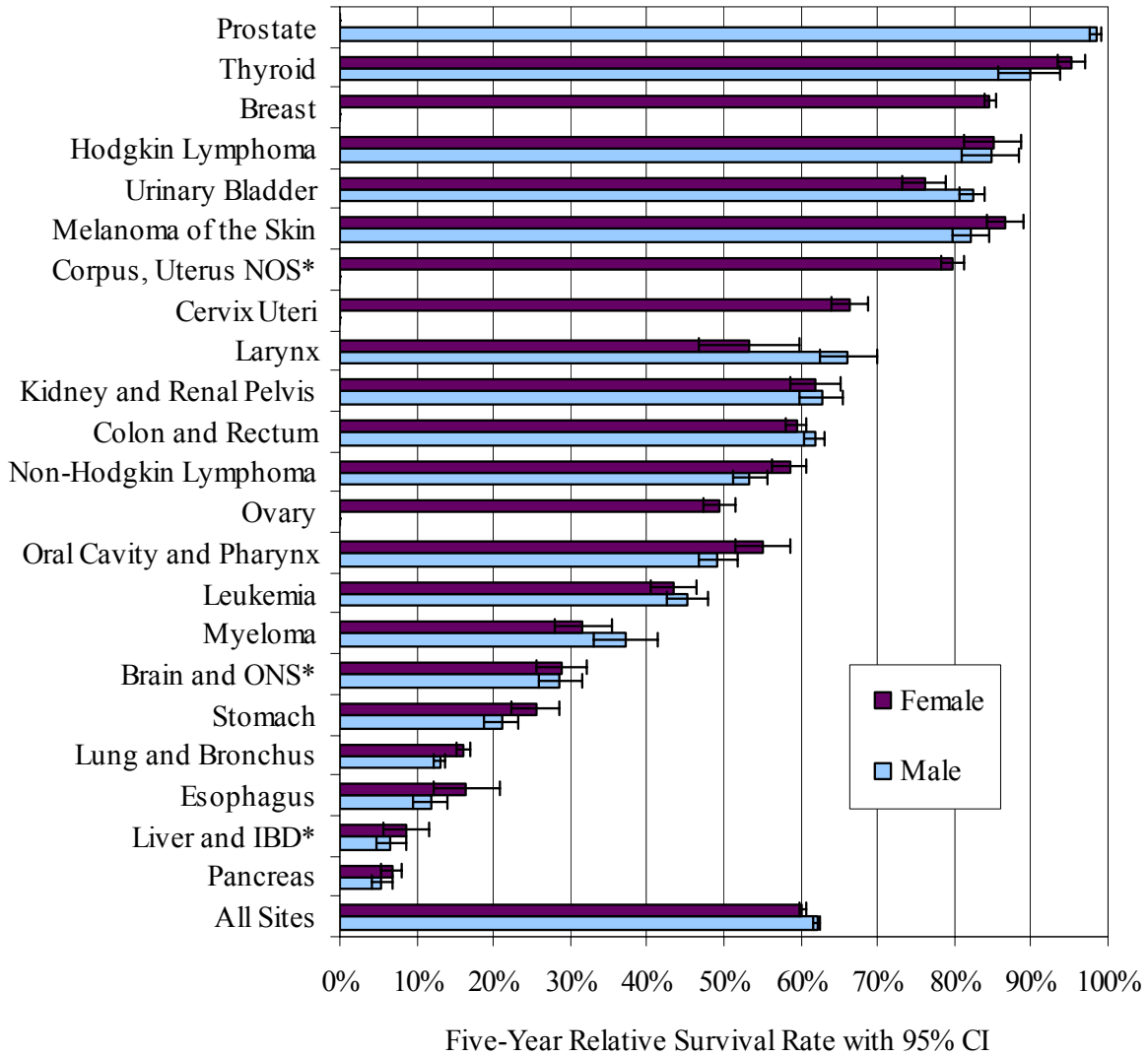
See Table 5 in Appendix A for detailed data.



New Jersey by Sex and Race

New Jersey five-year relative survival rates by race and sex are presented in Figures 6 through 8 below and Tables 6 and 7 in Appendix A. In Appendix A, detailed data tables 6 and 7 also include the five-year relative survival rates by sex and race for additional cancer types.

**Figure 6: Five-Year Relative Survival Rates by Sex
New Jersey, 1994-1997, All Races**



*NOS: Not Otherwise Specified. ONS: Other Nervous System. IBD: Intrahepatic Bile Duct. |——| : 95% Confidence Interval.

Data source: New Jersey State Cancer Registry, New Jersey Department of Health and Senior Services.

Includes invasive cancers only, except *in situ* bladder cancers are included.

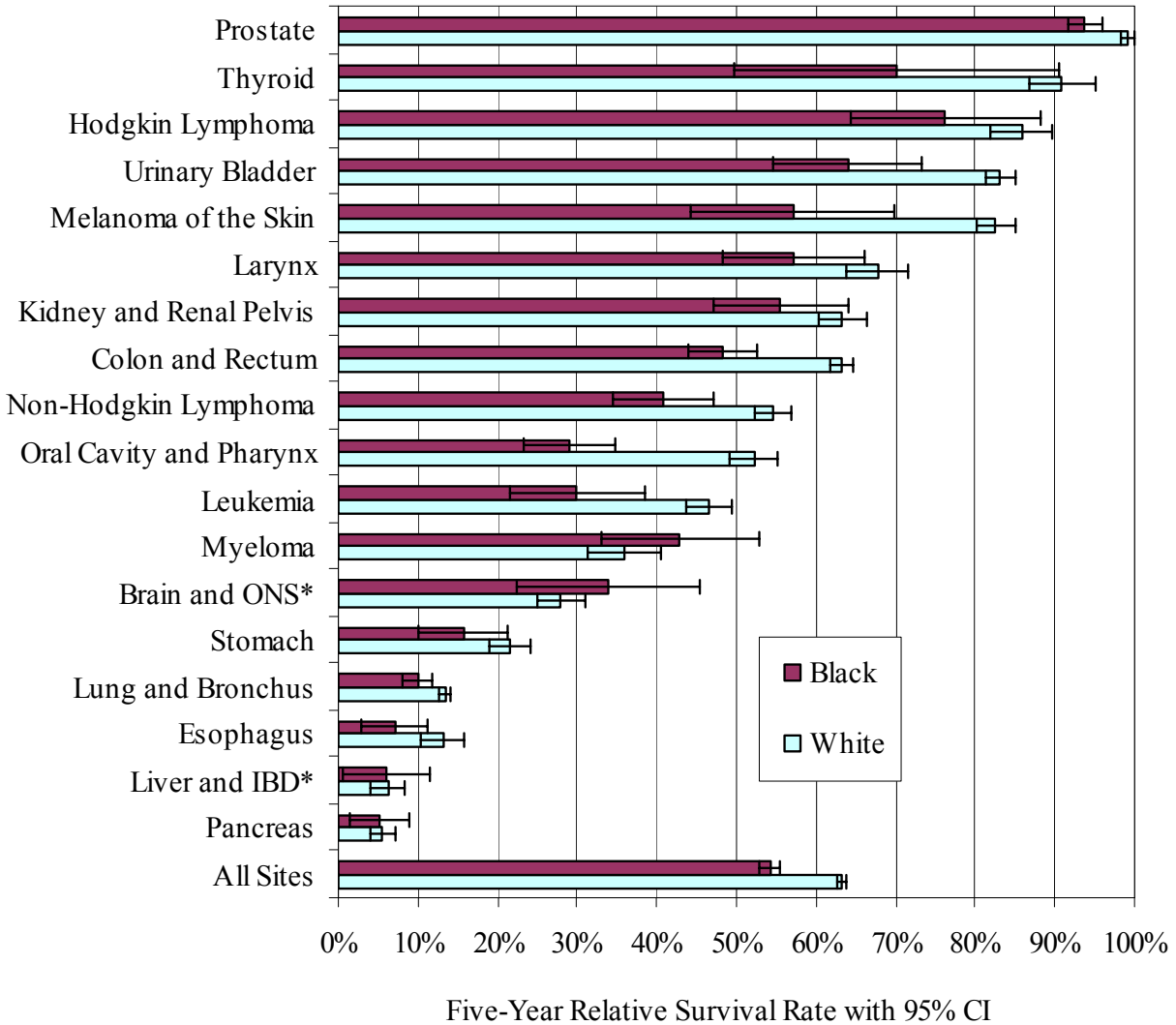
New Jersey survival data are based on 144,624 men and women diagnosed with a reportable cancer in 1994-1997 and followed through December 2002.

- In New Jersey, the five cancers with the best five-year relative survival rates were prostate, thyroid, Hodgkin lymphoma, bladder, and melanoma of the skin for men and thyroid, breast, Hodgkin lymphoma, melanoma of the skin, and endometrial (corpus, uterus NOS) for women.
- In New Jersey, the five cancers with the poorest five-year relative survival rates were pancreatic, liver, esophagus, lung, and stomach for both sexes.
- In New Jersey, the greatest differences in five-year relative survival rates between men and women were that women had higher rates for non-Hodgkin lymphoma, melanoma of the skin and cancers of the lung, thyroid and oral cavity and pharynx. Men had higher rates for all cancers combined and cancers of the bladder and larynx compared to women.

See Tables 6 and 7 in Appendix A for detailed data.



**Figure 7: Five-Year Relative Survival Rates by Race, Males
New Jersey, 1994-1997**



* ONS: Other Nervous System. IBD: Intrahepatic Bile Duct.

|—| : 95% Confidence Interval.

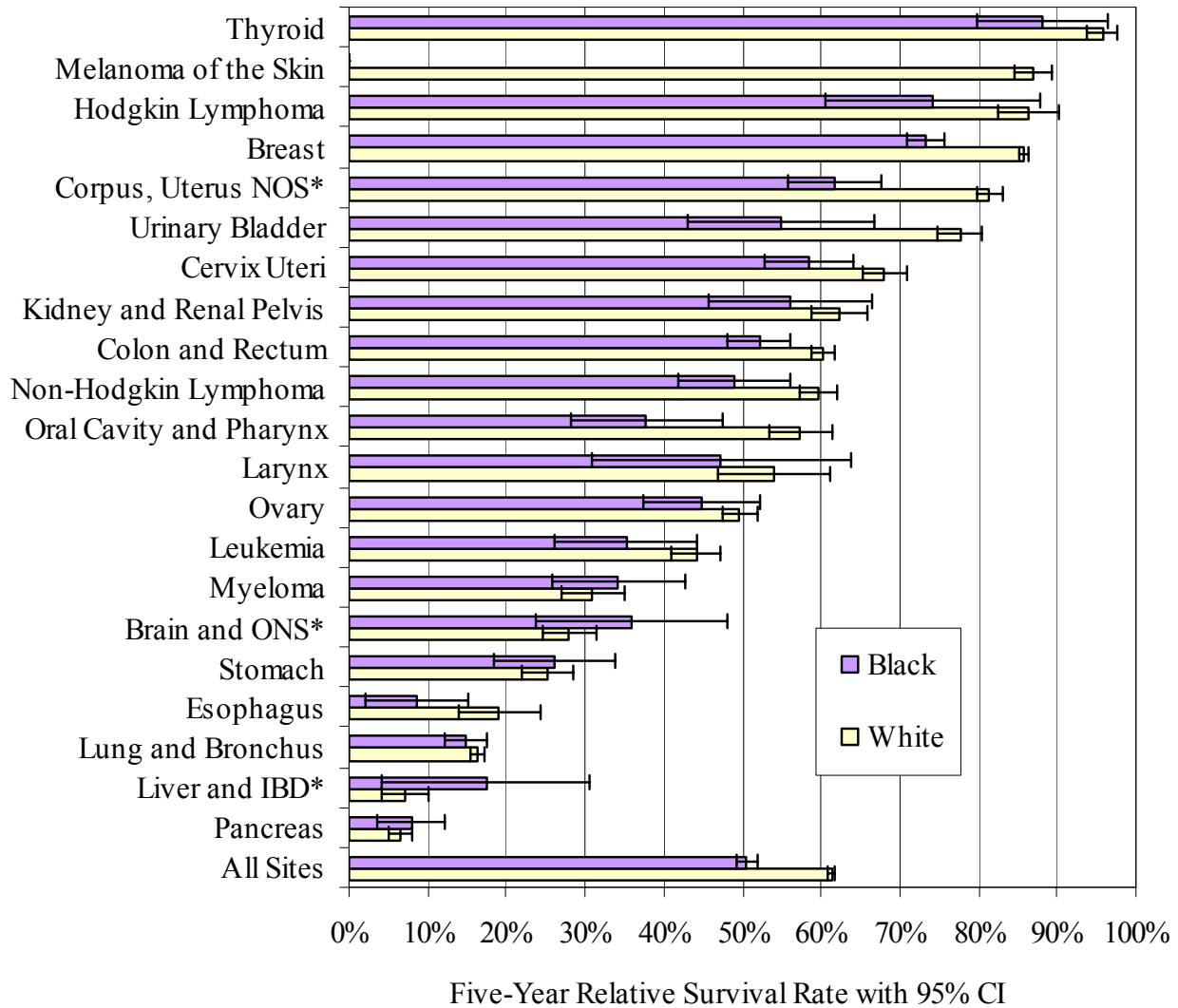
Data source: New Jersey State Cancer Registry, New Jersey Department of Health and Senior Services. Includes invasive cancers only, except *in situ* bladder cancers are included.

New Jersey survival data are based on 8,526 black men and 64,249 white men diagnosed with a reportable cancer in 1994-1997 and followed through December 2002.

- In New Jersey, black men had lower five-year relative survival rates than white men for all cancers combined and each type of cancer except myeloma and brain.

See Table 6 in Appendix A for detailed data.

**Figure 8: Five-Year Relative Survival Rates by Race, Females
New Jersey, 1994-1997**



Note: The melanoma of the skin rate was suppressed for blacks because there were fewer than 16 cases.

* NOS: Not Otherwise Specific. ONS: Other Nervous System. IBD: Intrahepatic Bile Duct.
|——| : 95% Confidence Interval.

Data source: New Jersey State Cancer Registry, New Jersey Department of Health and Senior Services. Includes invasive cancers only, except *in situ* bladder cancers are included. New Jersey survival data are based on 7,118 black women and 62,030 white women diagnosed with a reportable cancer in 1994-1997 and followed through December 2002.

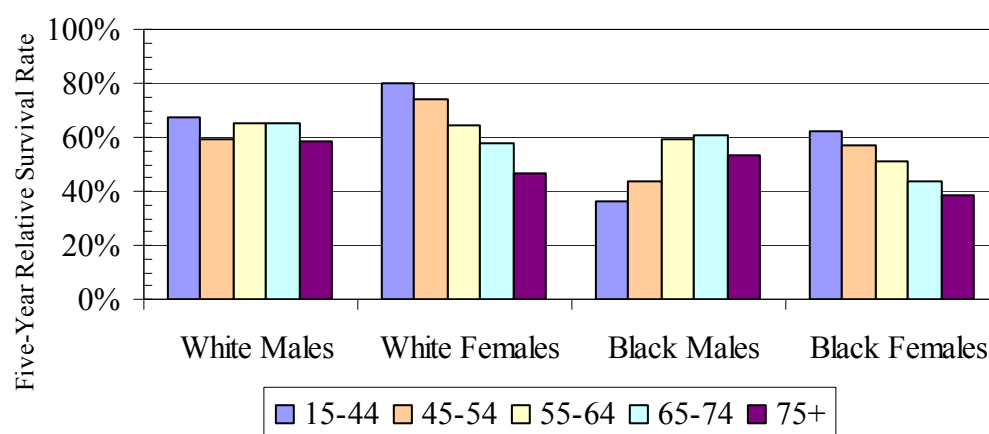
- In New Jersey, black women’s five-year relative survival rates were lower than white women’s for all cancers combined and each type of cancer except myeloma, brain, stomach, liver and pancreas.

See Table 7 in Appendix A for detailed data.

New Jersey by Age, Race and Sex

Relative survival rates for selected cancers by age, race and sex for patients age 15 and over are presented in Figures 9 through 15. The age group 0-14 was not presented in this section because childhood cancers differ from adult cancers in many respects. Also, subgroups with fewer than 16 cases were suppressed to ensure statistical reliability. (See Table 8 in Appendix A for detailed data.)

**Figure 9: Total Cancer Five-Year Relative Survival Rates by Age, Race and Sex
New Jersey, 1994-1997**



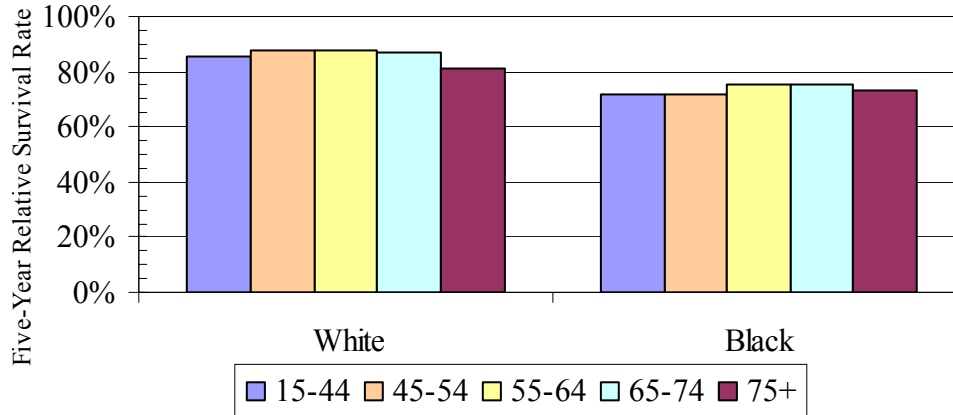
Data source: New Jersey State Cancer Registry, New Jersey Department of Health and Senior Services.

Includes invasive cancers only, except *in situ* bladder cancers are included.

New Jersey survival data are based 125,532 white men and women and 16,900 black men and women over the age of 15 diagnosed with a reportable cancer in 1994-1997 and followed through December 2002.

- For both white and black women, the five-year relative survival rates for total cancer consistently decreased with each older age group.
- For white men, the five-year relative survival rates for total cancer varied little with age group.
- For black men between the ages of fifteen and seventy-four, the five-year relative survival rates for total cancer increased as the age group increased.

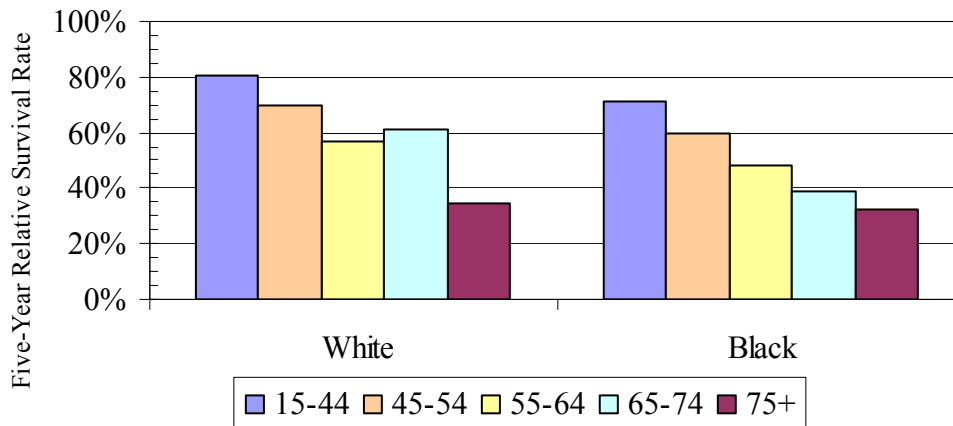
Figure 10: Female Breast Cancer Five-Year Relative Survival Rates by Age and Race, New Jersey, 1994-1997



Data source: New Jersey State Cancer Registry, New Jersey Department of Health and Senior Services. New Jersey survival data are based on 18,861 white women and 2,065 black women over the age of 15 diagnosed with invasive breast cancer in 1994-1997 and followed through December 2002.

- Women younger than 55 and older than 75 had slightly poorer five-year relative survival rates from breast cancer than women aged 45-74 at diagnosis.
- Black women had lower five-year relative survival rates than white women in every age group.

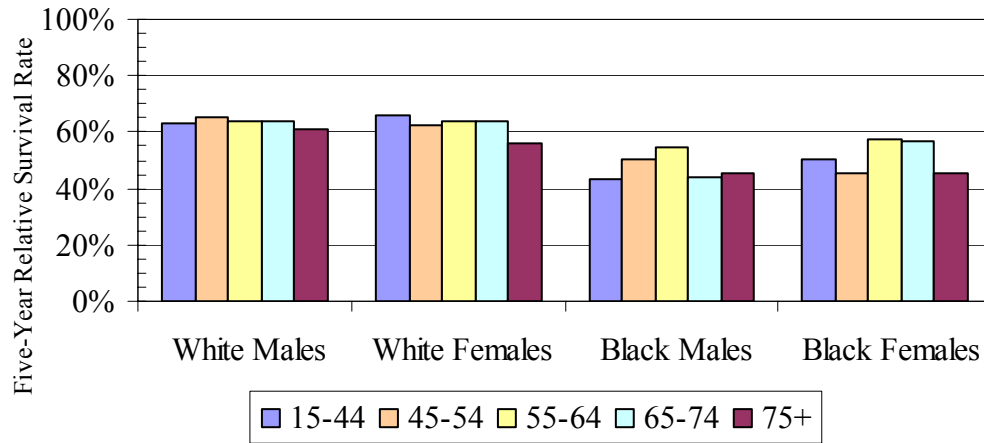
Figure 11: Cervical Cancer Five-Year Relative Survival Rates by Age and Race, New Jersey, 1994-1997



Data source: New Jersey State Cancer Registry, New Jersey Department of Health and Senior Services. New Jersey survival data are based on 1,446 white women and 400 black women over the age of 15 diagnosed with invasive cervical cancer in 1994-1997 and followed through December 2002.

- Generally, the five-year relative survival rates decreased with each older age group among both white and black women with cervical cancer.
- Black women had lower survival rates than white women in every age group.

Figure 12: Colorectal Cancer Five-Year Relative Survival Rates by Age, Race and Sex, New Jersey, 1994-1997

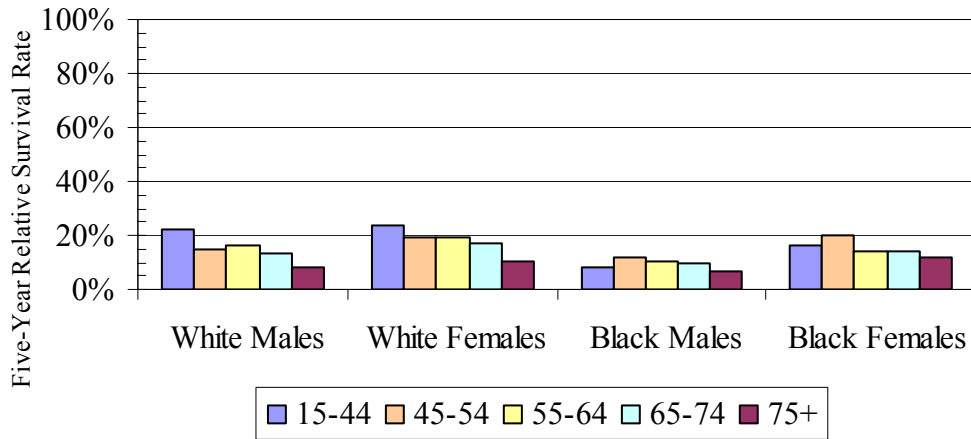


Data source: New Jersey State Cancer Registry, New Jersey Department of Health and Senior Services.

New Jersey survival data are based on 15,575 white men and women and 1,756 black men and women over the age of 15 diagnosed with invasive colorectal cancer in 1994-1997 and followed through December 2002.

- The colorectal cancer five-year relative survival rates for whites were lowest among the oldest age group (75+). The age pattern was different for blacks; the younger and older age groups had the lowest survival rates.
- Blacks had lower colorectal cancer five-year relative survival rates than whites for every age group for both men and women.

Figure 13: Lung Cancer Five-Year Relative Survival Rates by Age, Race and Sex, New Jersey, 1994-1997

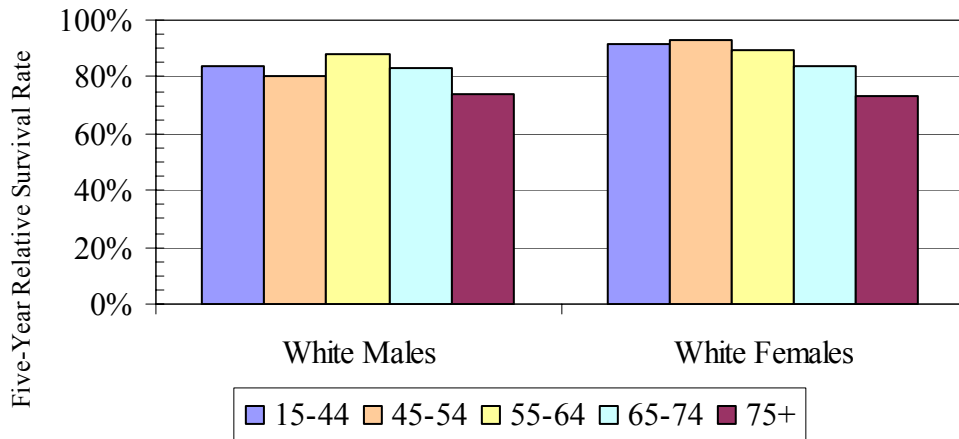


Data source: New Jersey State Cancer Registry, New Jersey Department of Health and Senior Services.

New Jersey survival data are based on 16,751 white men and women and 2,210 black men and women over the age of 15 diagnosed with invasive lung cancer in 1994-1997 and followed through December 2002.

- In New Jersey the lung cancer five-year relative survival rates for both white men and women were highest in the youngest age group (15-44).
- The lung cancer five-year relative survival rate for black men and women peaked in the 45-54 age group.
- In every age group blacks had lower survival rates than whites except black women age 75 and over had a slightly higher survival rate than white women age 75 and over.

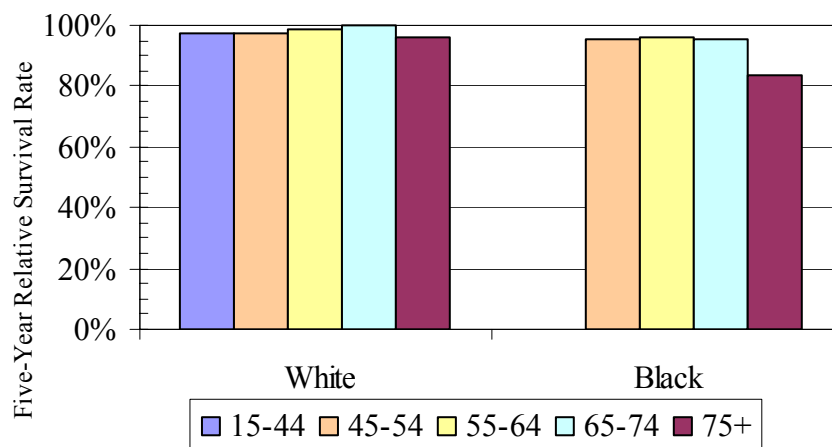
Figure 14: Melanoma of the Skin Five-Year Relative Survival Rates by Age and Sex, Whites, New Jersey, 1994-1997



Note: Rates are not presented for blacks due to fewer than 16 cases in each age group.
 Data source: New Jersey State Cancer Registry, New Jersey Department of Health and Senior Services.
 New Jersey survival data are based on 2,111 white men and 1,639 white women over the age of 15 diagnosed with invasive melanoma of the skin in 1994-1997 and followed through December 2002.

- The five-year relative survival rates for melanoma were lowest among the oldest age group (75+).
- In the three youngest age groups, women had higher melanoma five-year relative survival rates than men.

Figure 15: Prostate Cancer Five-Year Relative Survival Rates by Age and Race, New Jersey, 1994-1997



Note: The rate is not presented for black men aged 15-44 due to fewer than 16 cases.

Data source: New Jersey State Cancer Registry, New Jersey Department of Health and Senior Services.

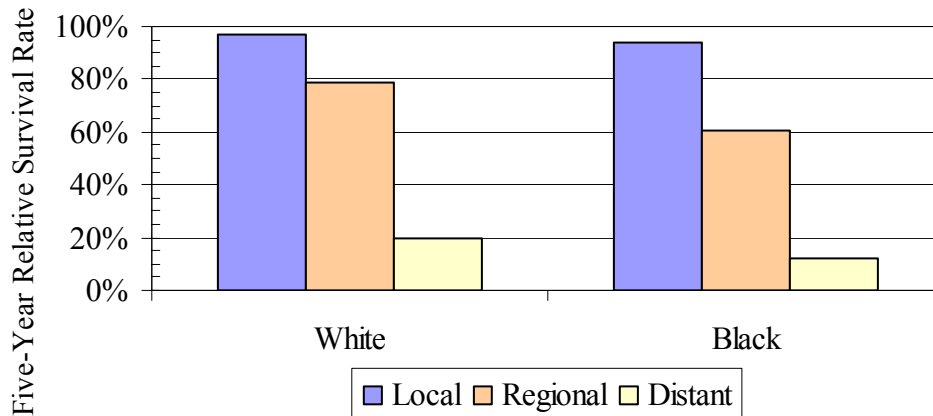
New Jersey survival data are based on 20,273 white men and 3,341 black men over the age of 15 diagnosed with invasive prostate cancer in 1994-1997 and followed through December 2002.

- The youngest age groups (15-44, 45-54) had slightly poorer survival than the middle age groups (55-64, 65-74); the oldest age group (75+) had the lowest survival rates.
- In each age group, white men had higher five year relative survival rates for prostate cancer than black men.

New Jersey by Stage at Diagnosis, Race and Sex

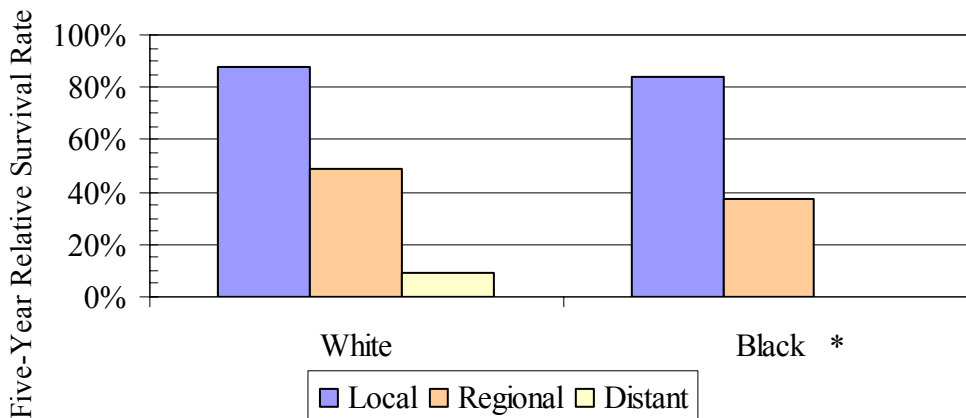
Cancer cases diagnosed in 1994-1997 at an early stage (local or regional stage) had much higher five-year relative survival rates than those diagnosed at the distant stage in all sex and race subgroups for female breast cancer, cervical cancer, colorectal cancer, lung cancer, melanoma of the skin (whites only), and prostate cancer. In general, among cases diagnosed at the same stage, whites had higher five-year relative survival rates than blacks for all the above listed cancers, except prostate cancer. (See Figures 16 through 21 and Table 9 in Appendix A.)

Figure 16: Female Breast Cancer Five-Year Relative Survival by Stage and Race New Jersey, 1994-1997



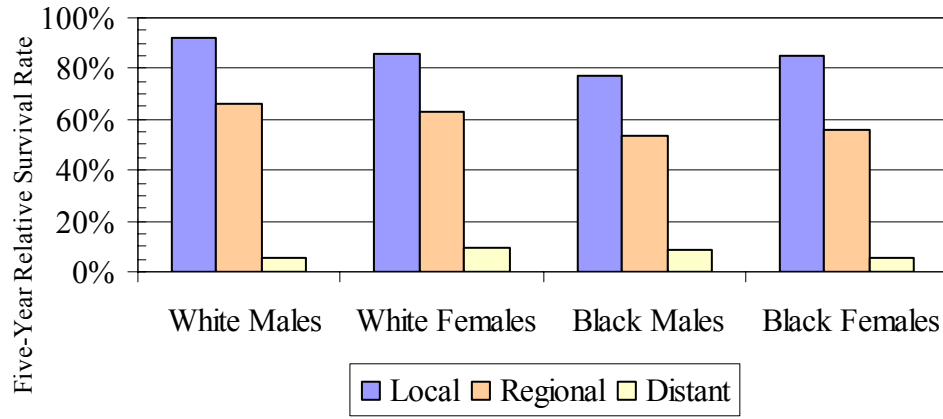
Note: The survival rates are not presented for males due to low numbers.
 Data source: New Jersey State Cancer Registry, New Jersey Department of Health and Senior Services. New Jersey survival data are based on 17,321 white women and 1,109 black women diagnosed with invasive breast cancer (excluding unstaged) in 1994-1997 and followed through December 2002.

Figure 17: Invasive Cervical Cancer Five-Year Relative Survival by Stage and Race New Jersey, 1994-1997



* All the black women diagnosed at the distant stage were deceased within five years.
 Data source: New Jersey State Cancer Registry, New Jersey Department of Health and Senior Services. New Jersey survival data are based on 1,273 white women and 341 black women diagnosed with invasive cervical cancer (excluding unstaged) in 1994-1997 and followed through December 2002.

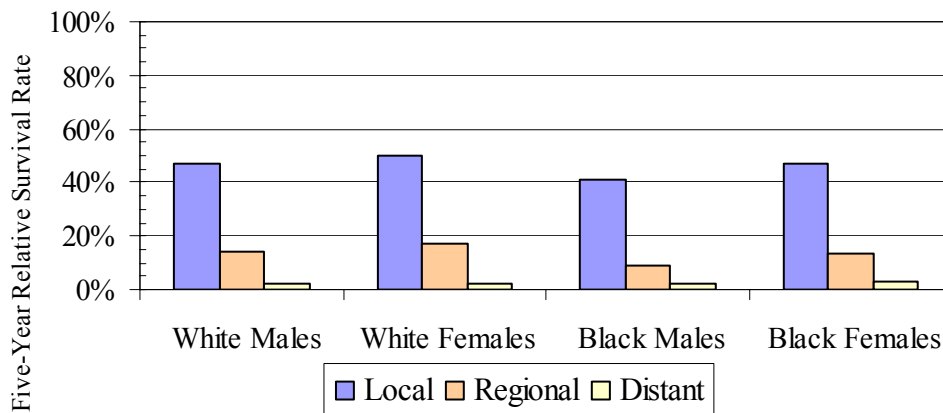
**Figure 18: Colorectal Cancer Five-Year Relative Survival by Stage, Race and Sex
New Jersey, 1994-1997**



Data source: New Jersey State Cancer Registry, New Jersey Department of Health and Senior Services.

New Jersey survival data are based on 13,843 white men and women and 1,570 black men and women diagnosed with invasive colorectal cancer (excluding unstaged) in 1994-1997 and followed through December 2002.

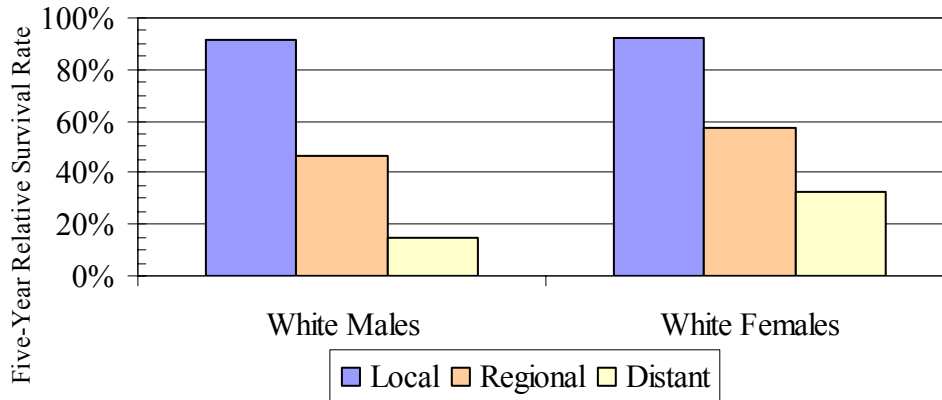
**Figure 19: Lung Cancer Five-Year Relative Survival by Stage, Race and Sex
New Jersey, 1994-1997**



Data source: New Jersey State Cancer Registry, New Jersey Department of Health and Senior Services.

New Jersey survival data are based on 14,021 white men and women and 1,901 black men and women diagnosed with invasive lung cancer (excluding unstaged) in 1994-1997 and followed through December 2002.

Figure 20: Melanoma of the Skin Five-Year Relative Survival by Stage and Sex New Jersey, 1994-1997

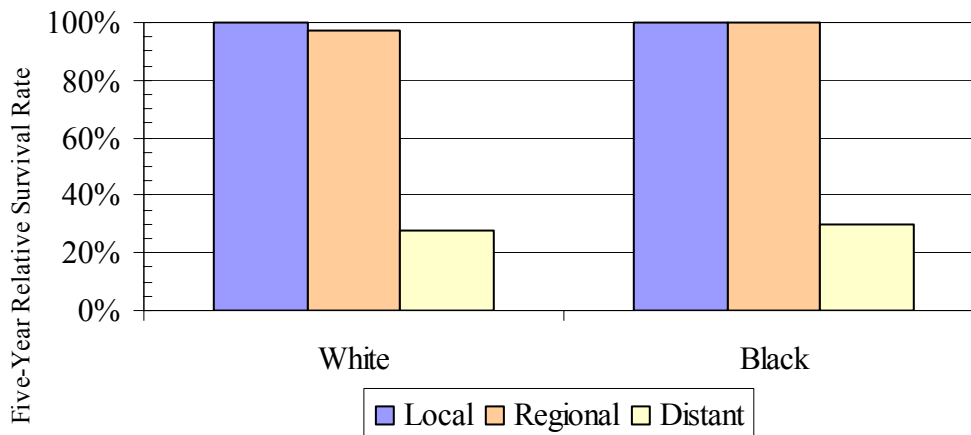


Note: The survival rates are not presented for blacks due to fewer than 16 cases.

Data source: New Jersey State Cancer Registry, New Jersey Department of Health and Senior Services.

New Jersey survival data are based on 1,622 white men and 1,271 white women diagnosed with invasive melanoma of the skin (excluding unstaged) in 1994-1997 and followed through December 2002.

Figure 21: Prostate Cancer Five-Year Relative Survival by Stage and Race New Jersey, 1994-1997



Data source: New Jersey State Cancer Registry, New Jersey Department of Health and Senior Services.

New Jersey survival data are based on 16,006 white men and 2,773 black men diagnosed with invasive prostate cancer (excluding unstaged) in 1994-1997 and followed through December 2002.



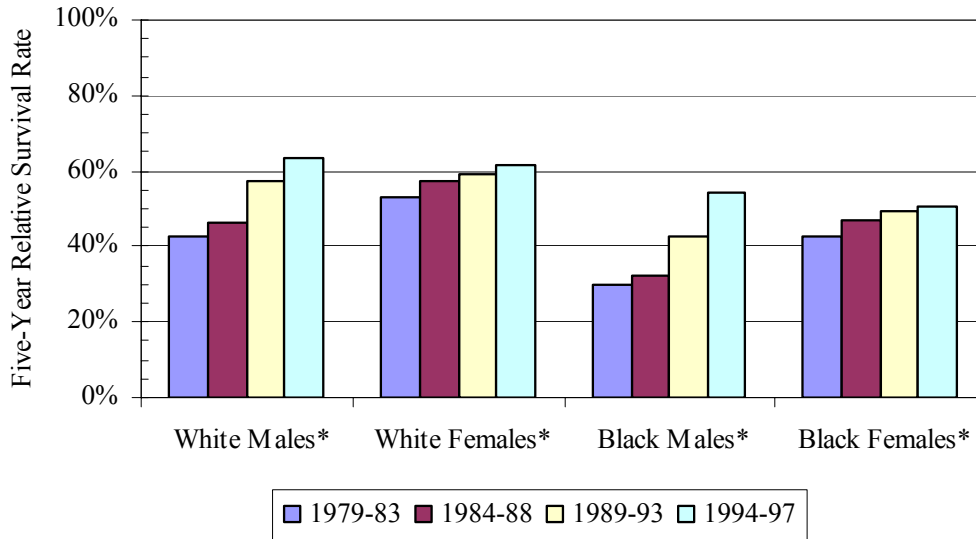
NEW JERSEY FIVE-YEAR RELATIVE SURVIVAL TRENDS

By Race and Sex, 1979-1997

In New Jersey, survival rates improved for blacks and whites of both genders diagnosed with cancer from 1979 to 1997. During this period, five-year relative cancer survival rates improved more for men than women and more for whites than blacks.

This section presents trends over time by five-year periods for all cancers combined and the most common cancers (female breast, cervical, colorectal, lung, melanoma of the skin and prostate). (See Figures 22 through 28 and Table 10 in Appendix A.)

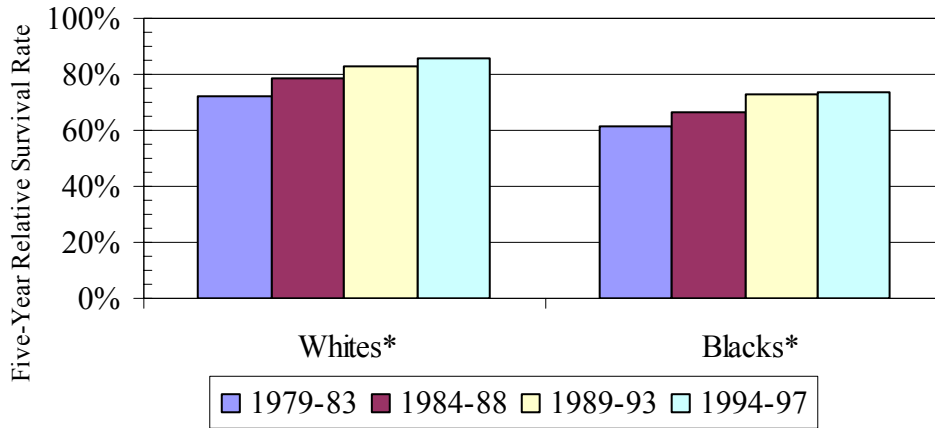
**Figure 22: Total Cancer Five-Year Relative Survival Trends by Sex and Race
New Jersey, 1979-1997**



* The increase in survival rates between 1979-1983 and 1994-1997 is statistically significant. Data source: New Jersey State Cancer Registry, New Jersey Department of Health and Senior Services. Survival data are based on 542,562 white men and women and 59,155 black men and women diagnosed with invasive cancers only (except *in situ* bladder cancers are included) in 1979-1997 and followed through December 2002.

- In New Jersey, significant improvements in five-year relative survival rates for total cancer between diagnosis years 1979-1983 and 1994-1997 were seen in men and women of both races.
- In New Jersey, both white and black men had more pronounced improvements in five-year relative survival rates for total cancer from 1979-1983 to 1994-1997 compared to women of either race.

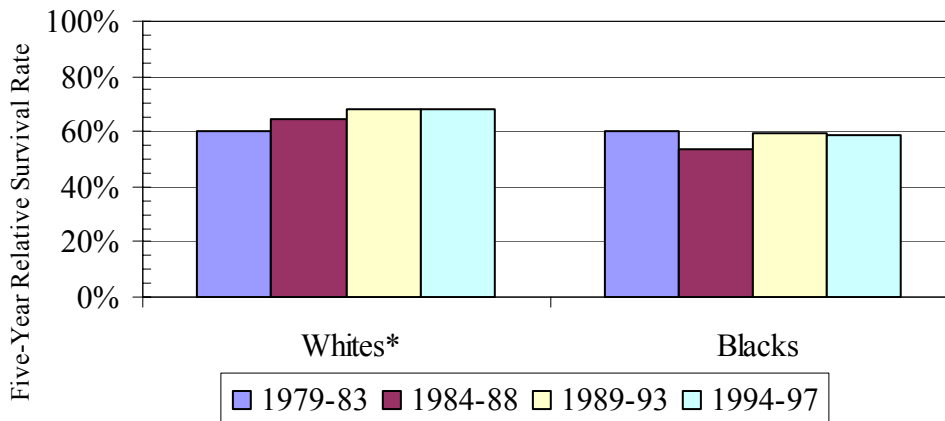
**Figure 23: Female Breast Cancer Five-Year Relative Survival Trends by Race
New Jersey, 1979-1997**



* The increase in survival rates between 1979-1983 and 1994-1997 is statistically significant. Data source: New Jersey State Cancer Registry, New Jersey Department of Health and Senior Services. Survival data are based on 81,606 white women and 7,821 black women diagnosed with invasive breast cancer and followed through December 2002.

- In New Jersey, female breast cancer five-year relative survival rates significantly improved for both whites and blacks from diagnosis years 1979-1983 to diagnosis years 1994-1997.

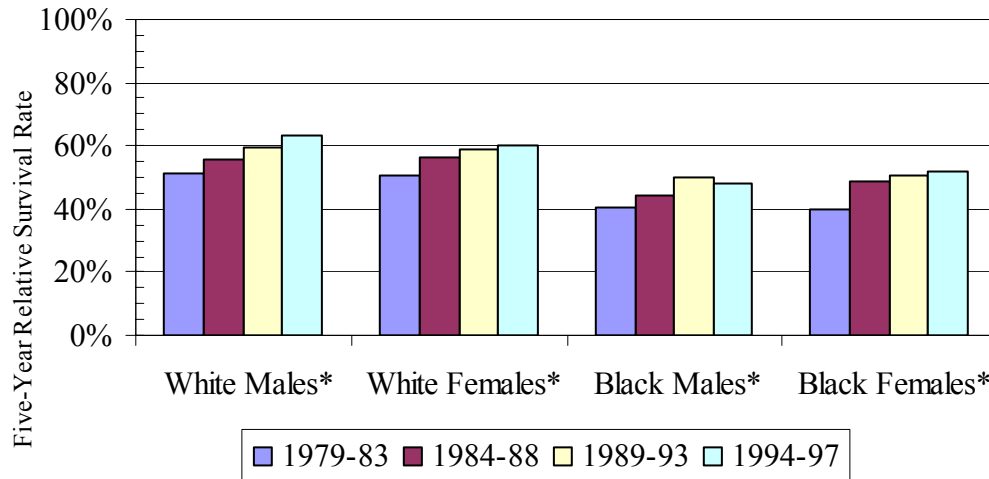
**Figure 24: Invasive Cervical Cancer Five-Year Relative Survival Trends by Race
New Jersey, 1979-1997**



*The increase in survival rates between 1979-83 and 1994-97 is statistically significant. Data source: New Jersey State Cancer Registry, New Jersey Department of Health and Senior Services. Survival data are based on 6,891 white women and 1,952 black women diagnosed with invasive cervical cancer and followed through December 2002.

- In New Jersey, the five-year relative survival rates for white women with cervical cancer significantly improved from diagnosis years 1979-1983 to diagnosis years 1994-1997. There was no improvement in five-year relative survival rates for black women with cervical cancer during this period.

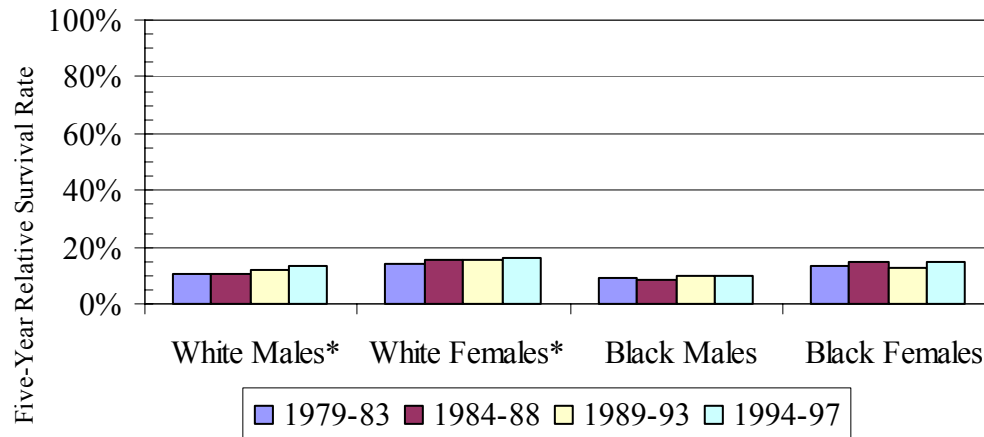
Figure 25: Colorectal Cancer Five-Year Relative Survival Trends by Race and Sex New Jersey, 1979-1997



*The increase in survival rates between 1979-1983 and 1994-1997 is statistically significant. Data source: New Jersey State Cancer Registry, New Jersey Department of Health and Senior Services. Survival data are based on 79,914 white men and women and 7,003 black men and women diagnosed with invasive colorectal cancer and followed through December 2002.

- In New Jersey, the colorectal cancer five-year relative survival rates improved for all the gender and race groups from diagnosis years 1979-1983 to diagnosis years 1994-1997.

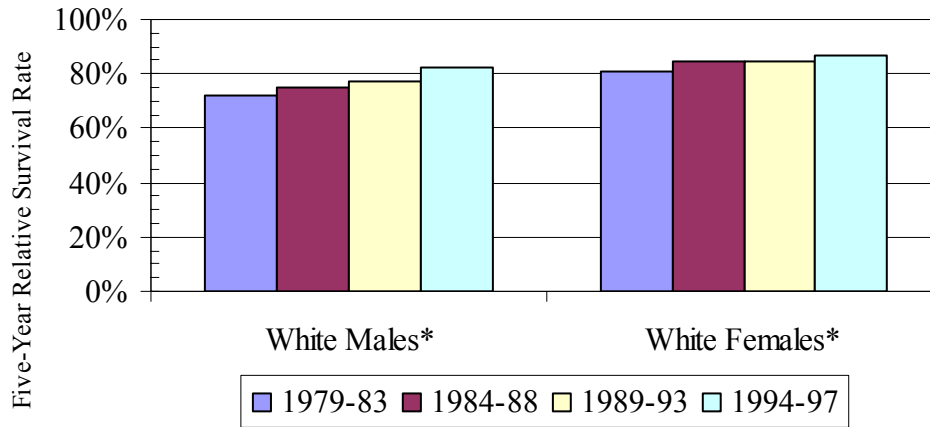
Figure 26: Lung Cancer Five-Year Relative Survival Trends, by Race and Sex New Jersey, 1979-1997



*The increase in survival rates between 1979-1983 and 1994-1997 is statistically significant. Data source: New Jersey State Cancer Registry, New Jersey Department of Health and Senior Services. Survival data are based on 76,761 white men and women and 9,738 black men and women diagnosed with invasive lung cancer and followed through December 2002.

- In New Jersey from the 1979-1983 to 1994-1997 diagnosis years, the lung cancer five-year relative survival rates improved significantly for whites, but little improvement occurred among blacks.

Figure 27: Melanoma of the Skin Five-Year Relative Survival Trends by Sex Whites, New Jersey, 1979-1997



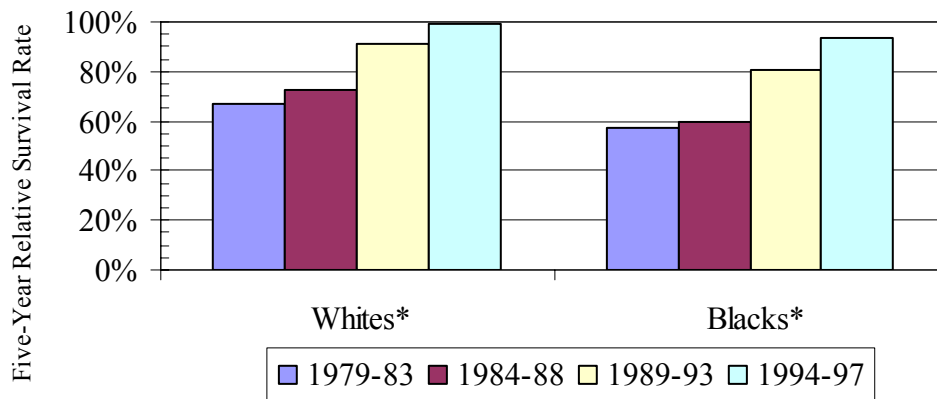
*The increase in survival rates between 1979-1983 and 1994-1997 is statistically significant.

Note: Rates are not presented for blacks due to fewer than 16 cases.

Data source: New Jersey State Cancer Registry, New Jersey Department of Health and Senior Services. Survival data are based on 7,716 white men and 6,219 white women diagnosed with invasive melanoma of the skin and followed through December 2002.

- In New Jersey, the five-year relative survival rates improved significantly for white men and women with melanoma between the diagnosis years 1979-1983 and 1994-1997.

Figure 28: Prostate Cancer Five-Year Relative Survival Trends by Race New Jersey, 1979-1997



* The increase in survival rates between 1979-1983 and 1994-1997 is statistically significant.

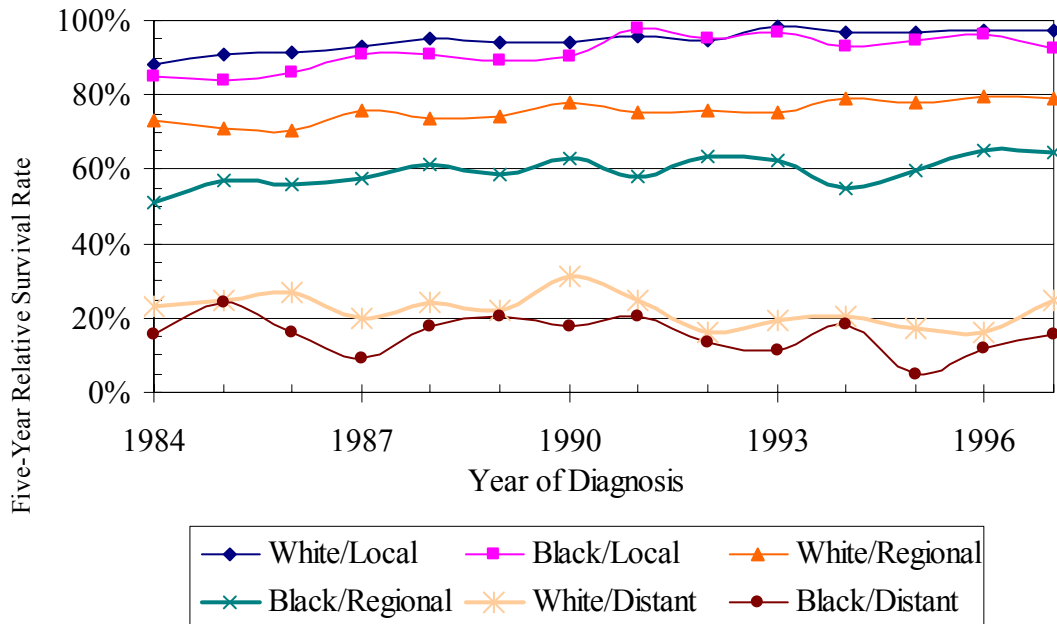
Data source: New Jersey State Cancer Registry, New Jersey Department of Health and Senior Services. Survival data are based on 65,889 white men and 9,151 black men diagnosed with invasive prostate cancer and followed through December 2002.

- In New Jersey, the prostate cancer five-year relative survival rates improved significantly for whites and blacks diagnosed after 1988 compared to 1988 and before.

By Stage at Diagnosis and Race, 1984-1997

The trends of five-year relative survival rates are presented by year of diagnosis and stage for female breast cancer and prostate cancer, the most common cancers for women and men, respectively. The years 1979 through 1983 were not included in the trends because the percentage of cancer cases with unknown stage at diagnosis was over 20 percent in these years. (See Figures 29 through 30 and Tables 11 and 12 in Appendix A.)

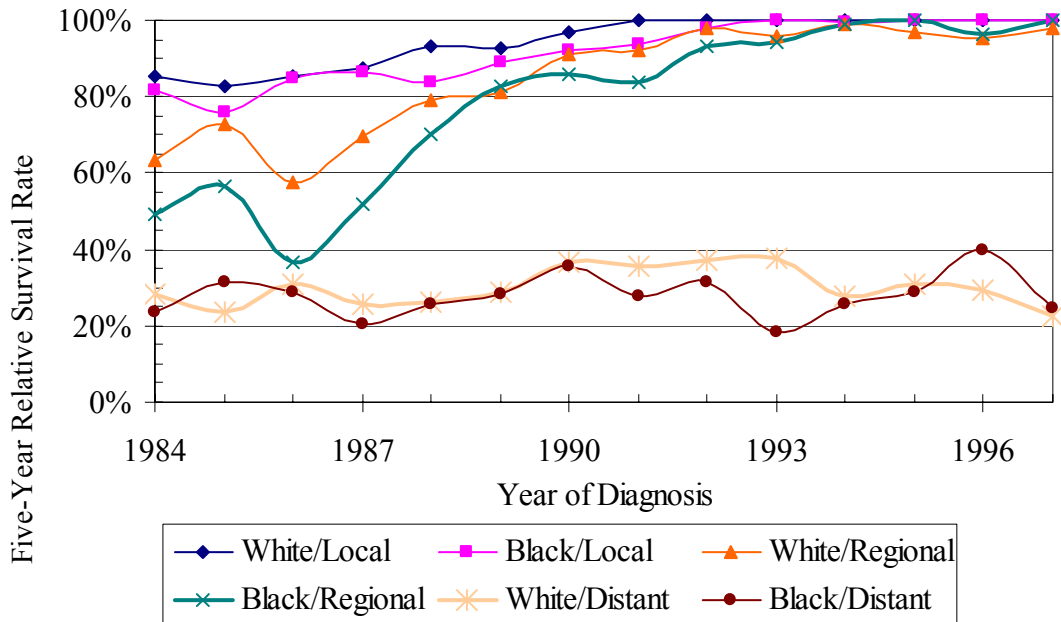
**Figure 29: Female Breast Cancer Five-Year Relative Survival Trends by Stage
New Jersey, 1984-1997**



Data source: New Jersey State Cancer Registry, New Jersey Department of Health and Senior Services. Survival data are based on 63,383 white women and 6,309 black women diagnosed with invasive breast cancer from 1984 to 1997 and followed for five years.

- In New Jersey, from the 1984 to 1997 diagnosis years, female breast cancer five-year relative survival rates for whites and blacks were similar for local stage and somewhat similar for distant stage. A large difference in five-year relative survival rates between white and black women diagnosed at the regional stage occurred throughout this time period.
- Between the 1984 and 1997 diagnosis years, the five-year relative survival rates improved from 88% to 98% and 73% to 79% for white women with local and regional stage breast cancer, respectively, and from 85% to 92% and 51% to 65% for black women with local and regional stage, respectively. There was no improvement in survival rates for female breast cancer diagnosed at the distant stage for either white or black women in this time period.

Figure 30: Prostate Cancer Five-Year Relative Survival Trends by Stage and Race New Jersey, 1984-1997



Data source: New Jersey State Cancer Registry, New Jersey Department of Health and Senior Services. Survival data are based on 55,615 white men and 7,817 black men diagnosed with invasive prostate cancer from 1984 to 1997 and followed for five years.

- In New Jersey, from the 1984 to 1997 diagnosis years, prostate cancer five-year relative survival rates for whites and blacks were similar for each stage after the year 1993.
- For men diagnosed with prostate cancer in the years 1984 to 1997, the five-year relative survival rates improved from 86% to 100% and 63% to 98% for whites with local and regional stage cancer, respectively, and from 82% to 100% and 49% to 100% for black men with local and regional stage cancer, respectively. For men diagnosed at the distant stage, there was little or no improvement in either race.



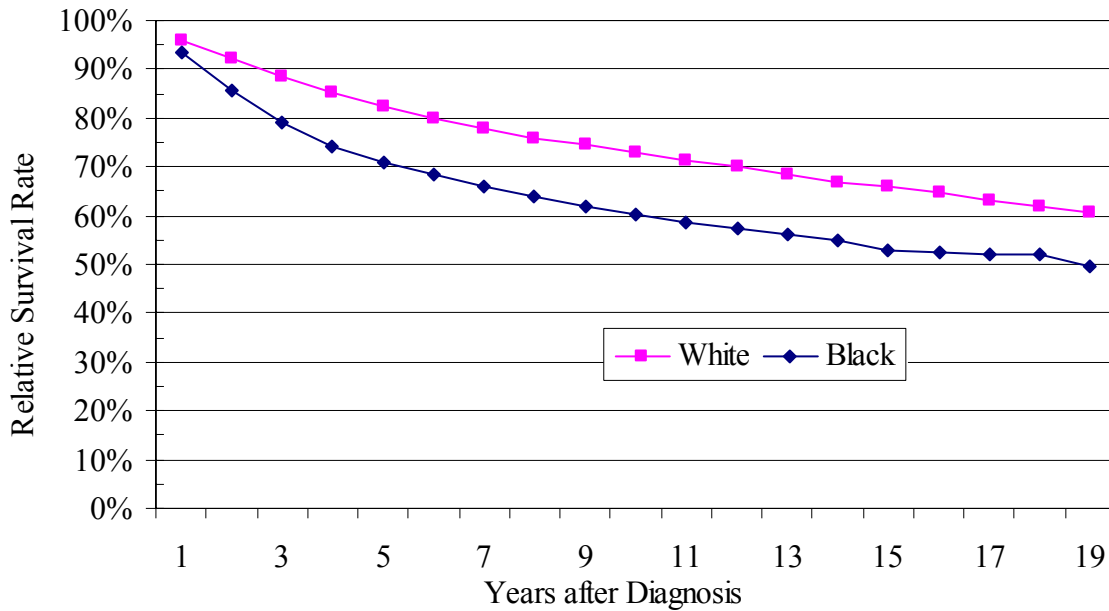
SURVIVAL CURVES FOR SELECTED CANCERS BY STAGE AT DIAGNOSIS AND RACE

A survival curve is a statistical picture of the survival experience of a group of cases in the form of a graph showing the percentage surviving by the number of years since diagnosis. The survival curve starts at diagnosis and ends at the study cutoff year or when all the cases have died, whichever is earlier. Adjustments are made statistically for cases who can no longer be tracked by the Registry. Any point on the curve gives the percentage of cases surviving at a particular number of years after diagnosis of the specified cancer. Therefore, five-year survival is a single point on the survival curve.

Survival curves by race and stage at diagnosis for female breast cancer and prostate cancer diagnosed in the years 1984-1997 and followed through 2002 are presented in this section. See Figures 31 through 34 and Tables 13 and 14. (Note: The diagnosis years 1979 through 1983 were not included because the percentage of cases with an unknown stage at diagnosis was over 20 percent in each of these years.)

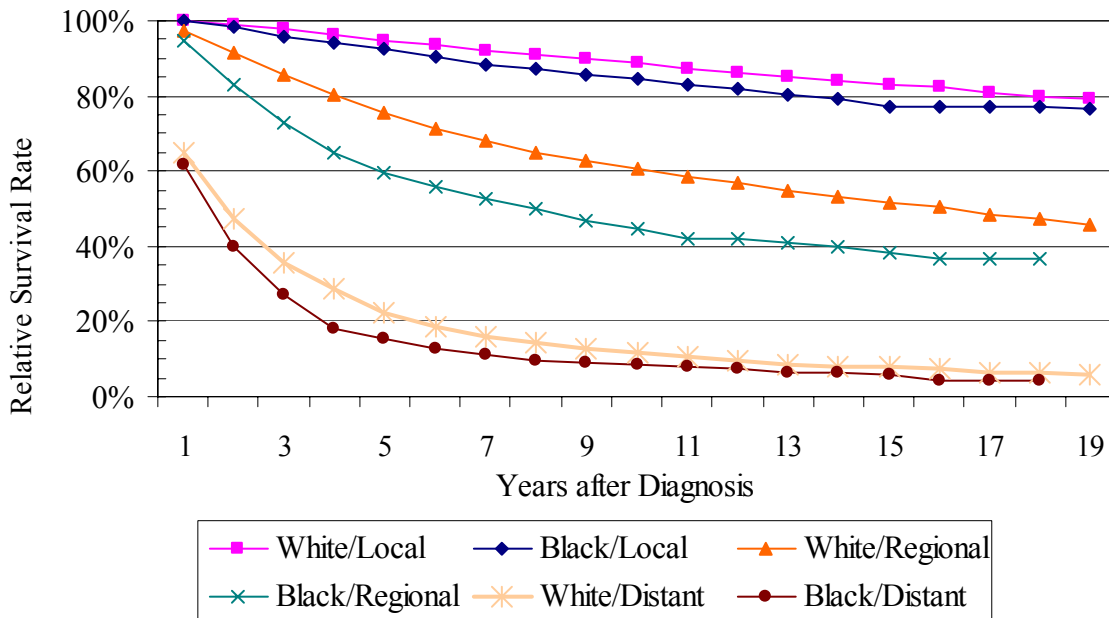
- White women had higher breast cancer survival compared to black women for all stages combined and for each stage at diagnosis. The greatest difference was between white and black women diagnosed at the regional stage.
- Among men diagnosed with prostate cancer at the local stage, whites had higher survival compared to blacks and the difference between the two races became greater for ten-year or longer survival rates. For prostate cancer diagnosed at the regional and distant stage, the survival rates were similar for whites and blacks except whites had higher fourteen-year or longer survival rates than blacks for cancers diagnosed at the regional stage.

Figure 31: Female Breast Cancer Survival by Race, New Jersey, 1984-1997



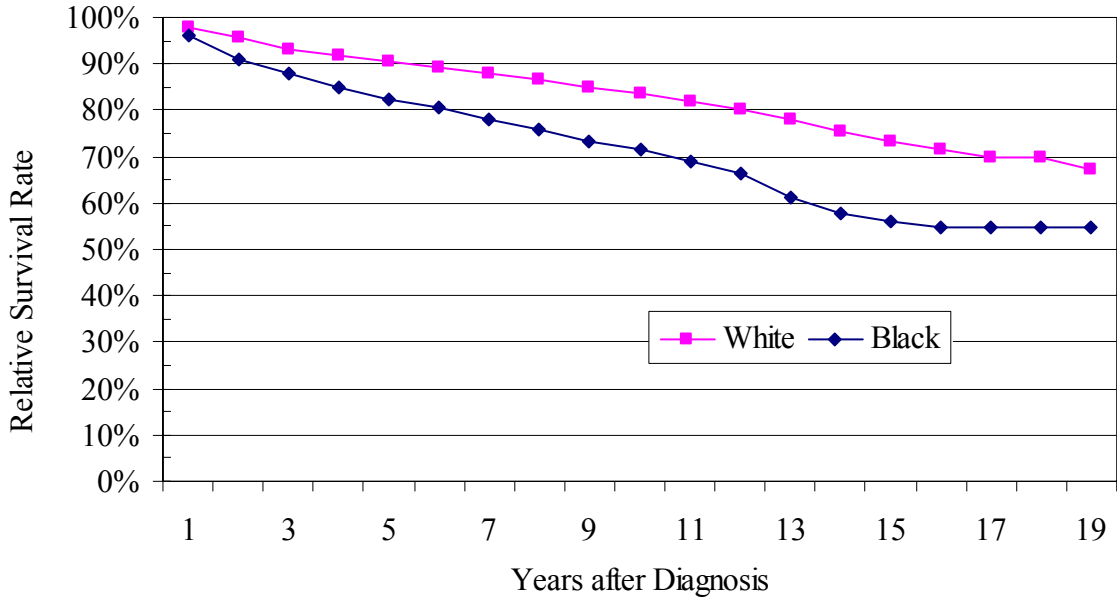
Data source: New Jersey State Cancer Registry, New Jersey Department of Health and Services.

Figure 32: Female Breast Cancer Survival by Stage and Race, New Jersey, 1984-1997



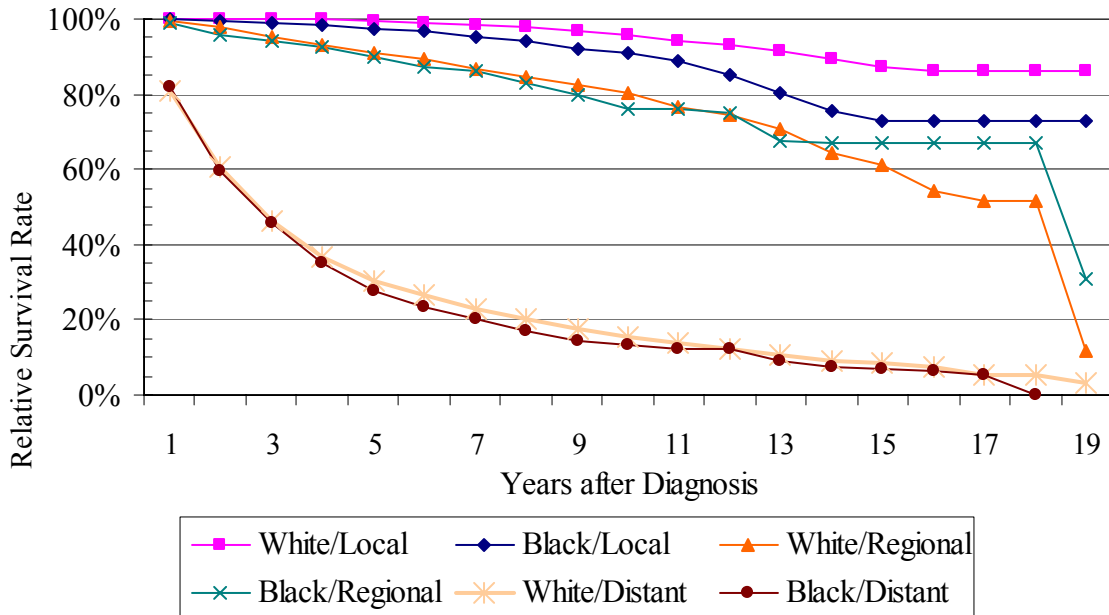
Data source: New Jersey State Cancer Registry, New Jersey Department of Health and Services.
 Note. All the Black/Regional (stage) and Black/Distant (stage) cases were censored (died) before 2002.

Figure 33: Prostate Cancer Survival by Race, New Jersey, 1984-1997



Data source: New Jersey State Cancer Registry, New Jersey Department of Health and Senior Services.

Figure 34: Prostate Cancer Survival by Stage and Race, New Jersey, 1984-1997



Data source: New Jersey State Cancer Registry, New Jersey Department of Health and Senior Services.

Note. All the Black/Distant (stage) cases were censored (died) before 2002.

**TRENDS IN PERCENT OF CANCERS DIAGNOSED AT THE LOCAL STAGE
BY RACE, 1984-1997**

The distribution of stage at diagnosis is important because survival rates are higher for local stage cancers than regional or distant stage cancers. In New Jersey, the percentage of cancers diagnosed at the local stage increased for female breast cancer and prostate cancer from 1984 to 1997 for both whites and blacks. Over time, whites consistently had higher percentages of local stage diagnosis compared to blacks (See Tables 1 and 2 below). (Note: The years 1979 through 1983 were not included in the tables because the percentage of cancer cases with an unknown stage at diagnosis was over 20 percent in each of these years.)

**Table 1: Female Breast Cancer Local Stage Percents by Diagnosis Year,
New Jersey, 1984-1997**

Year of Diagnosis	White		Black	
	Cases	%	Cases	%
1984	1,750	46.9	147	46.2
1985	1,982	47.8	146	39.7
1986	1,998	48.0	155	42.0
1987	2,317	51.3	166	40.1
1988	2,419	51.6	181	42.7
1989	2,283	51.0	200	42.9
1990	2,488	52.2	190	40.9
1991	2,544	55.3	232	51.9
1992	2,631	55.2	250	49.2
1993	2,548	54.5	208	44.6
1994	2,517	54.8	194	41.4
1995	2,678	56.7	246	47.2
1996	2,763	59.1	291	55.3
1997	2,828	58.0	272	49.5

Note: Percentages are based on total cases (including unknown stage) in the specific race group. Data source: New Jersey State Cancer Registry, New Jersey Department of Health and Senior Services.

Table 2: Prostate Cancer Local Stage Percents by Diagnosis Year, New Jersey, 1984-1997

Year of Diagnosis	White		Black	
	Cases	%	Cases	%
1984	1,301	58.4	165	53.2
1985	1,385	59.3	137	43.4
1986	1,422	59.3	145	48.3
1987	1,493	57.8	145	48.8
1988	1,503	55.3	170	44.9
1989	1,530	54.0	141	40.1
1990	1,760	50.5	186	40.9
1991	2,796	57.9	246	46.5
1992	3,700	58.3	363	50.0
1993	3,288	58.8	436	53.7
1994	2,884	59.3	417	56.1
1995	3,081	62.6	498	59.7
1996	3,410	67.2	557	64.8
1997	3,835	70.9	628	69.5

Note: Percentages are based on total cases (including unknown stage) in the specific race group.
 Data source: New Jersey State Cancer Registry, New Jersey Department of Health and Senior Services.

TECHNICAL NOTES

New Jersey State Cancer Registry (NJSCR)

NJSCR Overview

The objectives of the New Jersey State Cancer Registry (NJSCR) are to:

- monitor cancer trends in New Jersey;
- promote scientific research;
- respond to New Jersey residents about cancer concerns;
- educate the public;
- provide information for planning and evaluating cancer prevention and control activities; and
- share and compare cancer data with other states and the nation.

The New Jersey State Cancer Registry is a population-based cancer incidence registry that serves the entire state of New Jersey, which has a population of over 8.4 million people. The NJSCR was established by legislation (NJSA 26:2-104 et. seq.) and includes all cases of cancer diagnosed in New Jersey residents since October 1, 1978. New Jersey regulations (NJAC 8:57A) require the reporting of all newly diagnosed cancer cases to the NJSCR within three months of hospital discharge or six months of diagnosis, whichever is sooner. Reports are filed by hospitals, diagnosing physicians, dentists, and independent clinical laboratories. Every hospital in New Jersey reports cancer cases electronically. In addition, reporting agreements are maintained with New York, Pennsylvania, Delaware, Florida, Maryland, and North Carolina so that New Jersey residents diagnosed with cancer outside the state can be identified. Legislation passed in 1996 strengthened the Registry by: requiring electronic reporting; requiring abstracting by certified tumor registrars; and establishing penalties for late or incomplete reporting.

All primary invasive and *in situ* neoplasms are reportable to the NJSCR, except cervical cancer *in situ* diagnosed after 1994 and certain carcinomas of the skin. The information collected by the NJSCR includes basic patient identifiers, demographic characteristics of the patient, medical information on each cancer diagnosis (such as the anatomic site, histologic type and stage of disease), first course of treatment and vital status (alive or deceased) determined annually. For deceased cases, the underlying cause of death is also included. The primary site, behavior, grade, and histology of each cancer are coded according to the *International Classification of Diseases for Oncology (ICD-O)*, 2nd edition for cancers diagnosed through 2000 and the 3rd edition for cancers diagnosed after 2000. The NJSCR follows the data standards promulgated by the North American Association of Central Cancer Registries (NAACCR), including the use of the Surveillance, Epidemiology, and End Results (SEER) multiple primary rules. An individual may develop more than one cancer. Following the SEER multiple primary rules, patients could therefore be counted more than once if they were diagnosed with two or more primary cancers.

The NJSCR is a member of the North American Association of Central Cancer Registries (NAACCR), an organization that sets standards for cancer registries, facilitates data exchange, and publishes cancer data. The NJSCR has been a participant of the National Program of Cancer

Registries (NPCR) sponsored by the Centers for Disease Control and Prevention (CDC) since it began in 1994 and is a National Cancer Institute (NCI) SEER Registries.

NJSCR Data Quality

NAACCR has awarded the Gold Standard, the highest standard possible, to the NJSCR for the quality of the data for each year 1995 through 2002. The NJSCR has consistently achieved the highest level of certification for its data since the inception of this award. The criteria used to judge the quality of the data are completeness of cancer case ascertainment, completeness of certain information on the cancer cases, percent of death certificate only cases, percent of duplicate cases, passing an editing program, and timeliness.

Completeness of reporting to the NJSCR was estimated by comparing New Jersey and U.S. incidence to mortality ratios for whites and blacks, standardized for age, sex, and cancer site. The data used to generate these ratios were the cancer incidence rates for all SEER registries combined. Using these standard formulae, it is possible for the estimation of completeness to be greater than 100 percent. For the NJSCR data, the completeness of case reporting was estimated to be over 100 percent for the years included in this report.

While our estimates of completeness of reporting are very high, some cases of cancer among New Jersey residents who were diagnosed and/or treated in out-of-state facilities may not yet have been reported to the NJSCR by other state registries. This should be considered in interpreting the data for the more recent years. However, these relatively few cases will not significantly affect the cancer survival rates in this report.

The vital status of cases in the NJSCR is updated annually through various follow-up sources including state and national death files, state taxation files, hospital discharge files (UB-92), Medicare and Medicaid files, Social Security Administration Services for Epidemiologic Researchers, and motor vehicle registration records. Additionally, hospitals are required to submit annual vital status updates on cases they have reported. The completeness of vital status follow-up for the cases included in this report ranged from 89 percent for melanoma of the skin to 99 percent for lung cancer. The detailed numbers are presented in Appendix B.

Data Sources and Specifications for This Report

Data Sources

New Jersey survival rates were calculated using the November 2004 analytic file of the New Jersey State Cancer Registry. Survival rates for the U.S. for the selected time periods were obtained directly from the SEER Program public-use data set.⁶ The SEER U.S. cancer incidence data are from nine registries in the U.S. that cover about ten percent of the U.S. population. While these data are considered representative of the entire U.S., a recent study indicates that the SEER coverage population may not be representative of the entire U.S. population for certain cancer types; specifically, tobacco-related cancers are under-represented.⁷ Also, the population

of the U.S. includes a lower percentage of blacks and Hispanics than the New Jersey population, which may affect the comparisons of survival for all races between New Jersey and the U.S.

Data Specifications

All New Jersey first primary cancer cases with an invasive behavior, a valid age and sex, and a diagnosis year between 1979-1997 were included, except *in situ* urinary bladders also were included. Death certificate only cases were not included in this report. The U.S. cases met the same criteria, except only cases diagnosed from 1994-1997 were included. Cases diagnosed after 1997 were not included so all cases had at least five-years of follow-up as of December 31, 2002.

Calculation of Survival Rates⁸⁻¹²

Observed survival rate: The observed survival rate represents the proportion of cancer patients surviving for a specified time interval after diagnosis. Some of the patients not surviving have died of the cancer they were diagnosed with and some died of other causes. Observed survival rates are not presented in this report.

Relative survival rate: The relative survival rate approximates the likelihood that a patient will not die from causes associated specifically with the cancer they were diagnosed with before some specified time after diagnosis. It is always higher than the observed survival rate for the same group of patients. The relative survival rate is calculated using a procedure⁹ in which the observed survival rate is adjusted for expected mortality.

Survival curve: A survival curve is a statistical picture of the survival experience for a group of cases presented in the form of a graph which shows the percentage surviving by the number of years since diagnosis.

Calculation of the relative survival rates and curves: In this report, five-year relative survival rates and standard errors were calculated using the SEER*Stat software distributed by the National Cancer Institute (NCI) Surveillance, Epidemiology, and End Results (SEER) Program.¹⁰ The actuarial method was used to calculate the observed survival rates and the expected life tables for the U.S. for 1970, 1980, and 1990 by race (white, black, other), gender and single age (0-118) were used to adjust the observed rates to obtain the five-year relative survival rates. The actuarial method sets time intervals *a priori*, which for this report, was set to 'year'. All cases alive at the start of each interval, including those lost to follow-up during that interval (censored) were included. To adjust for these censored cases, the number at risk at the beginning of the interval is reduced by half the number of cases who were lost to follow-up during that interval. The interval survival rates are calculated using the adjusted or *effective sample size* of the interval. The cumulative survival rate is obtained by multiplying together the interval rates over all the intervals preceding this time point. The survival curves presented in this report were the relative survival rates for each number of years (1-19 years) after diagnosis.

Confidence intervals for the relative survival rates: Ninety-five percent confidence intervals (95% CI) were calculated around the five-year relative survival rates as follows: rate $\pm 1.96 \times SE$,

where SE is the standard error of the rate calculated from the SEER*Stat survival sessions. The 95% CI provides a range around the relative survival rate that 95 percent of the time the true rate falls within. In the bar charts of this report, the extending lines from the bars represent the 95% CIs around each estimated survival rate.

Time trends in relative survival rates: The five-year relative survival rates for cases diagnosed in 1994-97 were compared with the survival rates for cases diagnosed in 1979-83 by calculating the Z-score from the SEER*Stat survival sessions. The difference between the two survival rates is statistically significant at the $p < 0.05$ level if $|Z| \geq 1.96$. The details of the Z-test procedure are described in the SEER*Stat technical notes.^{10, 12}

Suppression

Subgroups with fewer than 16 cases were suppressed to ensure statistical reliability.

Limitations

The proportion of cases lost to follow-up (missing vital status) varies by age, sex, race and cancer type. The impact of this on survival estimates has not been evaluated.

For most of this report, comparisons of survival between groups was made at the five-year point on the survival curves, which is the most frequently used method in the cancer literature using population-based registry data. Another method to assess cancer survival is the survival curve, which in this report characterizes survival up to nineteen years after the initial cancer diagnosis. For this report, the survival curve is presented for female breast cancer and prostate cancer (Figures 31-34).

These two methods of survival analysis answer different questions and generalization of comparisons between these methods can lead to incorrect conclusions. Survival probabilities at five years in two groups might be the same even though the two survival curves are different as a whole.

REFERENCES

1. Jemal A, Clegg LX, Ward E, Ries LAG, Wu X, Jamison PM, Wingo PA, Howe HL, Anderson RN, Edwards BK. *Annual Report to the Nation on the Status of Cancer, 1975-2001, with a Special Feature Regarding Survival*. *Cancer* 2004;101:3-27.
2. Louchini R, Beaupré M. *Survival Probabilities for Cancers Reported between 1984 and 1998 in Quebec*. Institut National de Santé Publique du Québec. 2003.
3. Ries LAG, Eisner MP, Kosary CL, Hankey BF, Miller BA, Clegg L, Mariotto A, Feuer EJ, Edwards BK (eds). *SEER Cancer Statistics Review, 1975-2001*, National Cancer Institute. Bethesda, MD, http://seer.cancer.gov/csr/1975_2001/, 2004. [accessed May 2005].
4. Singh GK, Miller BA, Hankey BF, Edwards BK. *Area Socioeconomic Variations in U.S. Cancer Incidence, Mortality, Stage, Treatment, and Survival, 1975-1999*. NCI Cancer Surveillance Monograph Series, Number 4. Bethesda, MD: National Cancer Institute, 2003. NIH Publication No. 03-5417.
5. Brenner H, Arndt V. *Recent Increase in Cancer Survival According to Age: Higher Survival in all Age Groups, but Widening Age Gradient*. *Cancer Causes and Control* 2004;15:903-10.
6. Surveillance Research Program, National Cancer Institute SEER*Stat software (www.seer.cancer.gov/seerstat) version 6.1.4.
7. Merrill RM, Dearden KA. How representative are the Surveillance, Epidemiology, and End Results (SEER) Program cancer data of the United States? *Cancer Causes and Control* 2004;15:1027-34.
8. Esteve J, Benhamou E, Raymond L. *Statistical Methods in Cancer Research, Volume IV, Descriptive Epidemiology*. IARC Scientific Publications No 128, Lyon 1994.
9. Derrer F, Axtell LM, Cutler SJ. *The relative survival rate: A statistical methodology*. *J Natl Cancer Inst Monogr* 1961, 6:101-21.
10. Surveillance, Epidemiology, and End Results (SEER) Program (www.seer.cancer.gov) SEER*Stat database. Incidence- SEER 9 Regs Public Use, Nov. 2004 Sub (1973-2002), National Cancer Institute, DCCPS, Surveillance Research Program, Cancer Statistics Branch, released April 2005, based on the November 2004 submission.
11. Lanier AP, Holck P, Kelly J, Smith B, McEvoy T. *Alaska Native Cancer Survival*. *Alaska Medicine*, Jul/Aug/Sep 2001.
12. Brown CC. *The statistical comparison of relative survival rates*. *Biometrics* 1983; 39:941-8.

APPENDIX A: CANCER SURVIVAL RATE TABLES

**Table 1: Cancer Five-Year Relative Survival Rates, All Races and Both Sexes
New Jersey and the U.S., 1994-1997**

Cancer Site	New Jersey			U.S.	
	Cases	Rate	SE	Rate	SE
All Sites	144,624	61.1%	0.2%	63.5%	0.1%
Pancreas	3,286	6.2%	0.5%	4.6%	0.3%
Liver and IBD*	1,297	7.3%	0.9%	7.4%	0.5%
Esophagus	1,420	13.1%	1.1%	13.8%	0.7%
Lung and Bronchus	19,223	14.5%	0.3%	15.2%	0.2%
Stomach	2,864	22.8%	1.0%	22.8%	0.6%
Brain and ONS*	2,068	28.8%	1.1%	33.5%	0.7%
Myeloma	1,630	34.3%	1.4%	32.7%	0.8%
Leukemia	3,587	44.4%	1.0%	48.3%	0.6%
Ovary	2,872	49.3%	1.1%	44.6%	0.7%
Oral Cavity and Pharynx	2,990	51.1%	1.1%	59.0%	0.6%
Non-Hodgkin Lymphoma	5,934	55.8%	0.8%	56.4%	0.5%
Colon and Rectum	17,605	60.6%	0.5%	62.5%	0.3%
Kidney and Renal Pelvis	3,200	62.4%	1.1%	63.5%	0.7%
Larynx	1,420	63.4%	1.6%	66.0%	1.0%
Cervix Uteri	1,914	66.3%	1.3%	73.4%	0.8%
Corpus and Uterus, NOS*	4,381	79.7%	0.8%	84.3%	0.5%
Urinary Bladder	6,598	80.6%	0.8%	82.1%	0.5%
Melanoma of the Skin	3,814	84.2%	0.9%	90.5%	0.4%
Breast (female)	21,386	84.6%	0.4%	87.3%	0.2%
Hodgkin Lymphoma	1,036	84.8%	1.3%	85.2%	0.8%
Thyroid	1,658	93.8%	0.9%	96.2%	0.4%
Prostate	23,923	98.4%	0.4%	98.5%	0.2%

SE: Standard error of the rate.

* IBD: Intrahepatic Bile Duct. ONS: Other Nervous System. NOS: Not Otherwise Specified. New Jersey cases include first primary cases with an invasive behavior (except *in situ* urinary bladder), a valid age and sex, diagnosed from 1994-1997 and followed through December 2002. U.S. cases include first primary cases with an invasive behavior (except *in situ* urinary bladder), a valid age and sex, diagnosed from 1994-1997 and followed through December 2002.

Data sources: New Jersey data - New Jersey State Cancer Registry, New Jersey Department of Health and Senior Services; U.S. data - Surveillance, Epidemiology, and End Results (SEER) Program, National Cancer Institute.

**Table 2: Cancer Five-Year Relative Survival Rates, White Males
New Jersey and the U.S., 1994-1997**

Cancer Site	New Jersey			U.S.	
	Cases	Rate	SE	Rate	SE
All Sites	64,249	63.2%	0.3%	64.6%	0.2%
Pancreas	1,311	5.6%	0.8%	4.7%	0.4%
Liver and IBD*	666	6.2%	1.1%	6.2%	0.7%
Esophagus	812	13.1%	1.4%	15.7%	0.9%
Lung and Bronchus	9,341	13.4%	0.4%	13.7%	0.3%
Stomach	1,407	21.5%	1.3%	19.9%	0.9%
Brain and ONS*	1,036	28.0%	1.6%	33.2%	1.0%
Myeloma	638	35.9%	2.3%	34.3%	1.3%
Leukemia	1,772	46.5%	1.5%	49.9%	0.9%
Oral Cavity and Pharynx	1,607	52.2%	1.5%	61.0%	0.8%
Non-Hodgkin Lymphoma	2,733	54.5%	1.2%	54.9%	0.7%
Colon and Rectum	7,760	63.2%	0.8%	63.7%	0.5%
Kidney and Renal Pelvis	1,664	63.3%	1.5%	64.6%	0.9%
Larynx	917	67.7%	2.0%	69.8%	1.3%
Melanoma of the Skin	2,117	82.6%	1.2%	88.6%	0.6%
Urinary Bladder	4,573	83.1%	1.0%	84.8%	0.6%
Hodgkin Lymphoma	480	85.8%	2.0%	84.8%	1.2%
Thyroid	369	90.9%	2.2%	92.8%	1.1%
Prostate	20,273	99.2%	0.4%	99.2%	0.2%

SE: Standard error of the rate.

* IBD: Intrahepatic Bile Duct. ONS: Other Nervous System.

New Jersey cases include first primary cases with an invasive behavior (except *in situ* urinary bladder), a valid age and sex, diagnosed from 1994-1997 and followed through December 2002.

U.S. cases include first primary cases with an invasive behavior (except *in situ* urinary bladder), a valid age and sex, diagnosed from 1994-1997 and followed through December 2002.

Data sources: New Jersey data - New Jersey State Cancer Registry, New Jersey Department of Health and Senior Services; U.S. data - Surveillance, Epidemiology, and End Results (SEER) Program, National Cancer Institute.

**Table 3: Cancer Five-Year Relative Survival Rates, White Females
New Jersey and the U.S., 1994-1997**

Cancer Site	New Jersey			U.S.	
	Cases	Rate	SE	Rate	SE
All Sites	62,030	61.3%	0.3%	65.1%	0.2%
Pancreas	1,549	6.5%	0.7%	4.4%	0.4%
Liver and IBD*	370	7.1%	1.6%	8.8%	1.1%
Lung and Bronchus	7,411	16.3%	0.5%	17.4%	0.3%
Esophagus	300	19.0%	2.7%	14.8%	1.6%
Stomach	935	25.2%	1.7%	24.5%	1.2%
Brain and ONS*	817	28.0%	1.8%	32.1%	1.1%
Myeloma	642	31.0%	2.1%	30.5%	1.3%
Leukemia	1,424	44.1%	1.6%	48.9%	1.0%
Ovary	2,593	49.6%	1.2%	44.2%	0.8%
Larynx	247	54.1%	3.7%	61.6%	2.4%
Oral Cavity and Pharynx	878	57.4%	2.1%	63.4%	1.2%
Non-Hodgkin Lymphoma	2,538	59.6%	1.2%	60.7%	0.8%
Colon and Rectum	7,816	60.3%	0.8%	62.5%	0.5%
Kidney and Renal Pelvis	1,164	62.3%	1.8%	62.2%	1.1%
Cervix Uteri	1,446	68.1%	1.4%	74.8%	0.9%
Urinary Bladder	1,660	77.6%	1.5%	78.1%	1.0%
Corpus and Uterus, NOS**	3,926	81.4%	0.8%	86.1%	0.5%
Breast	18,861	85.8%	0.4%	88.6%	0.2%
Hodgkin Lymphoma	428	86.3%	2.0%	87.5%	1.2%
Melanoma of the Skin	1,641	86.9%	1.2%	93.1%	0.5%
Thyroid	1,065	95.7%	1.0%	97.6%	0.4%

SE: Standard error of the rate.

*IBD: Intrahepatic Bile Duct. ONS: Other Nervous System. NOS: Not Otherwise Specified.

New Jersey cases include first primary cases with an invasive behavior (except *in situ* urinary bladder), a valid age and sex, diagnosed from 1994-1997 and followed through December 2002.

U.S. cases include first primary cases with an invasive behavior (except *in situ* urinary bladder), a valid age and sex, diagnosed from 1994-1997 and followed through December 2002.

Data sources: New Jersey data - New Jersey State Cancer Registry, New Jersey Department of Health and Senior Services; U.S. data - Surveillance, Epidemiology, and End Results (SEER) Program, National Cancer Institute.

**Table 4: Cancer Five-Year Relative Survival Rates, Black Males
New Jersey and the U.S., 1994-1997**

Cancer Site	New Jersey			U.S.	
	Cases	Rate	SE	Rate	SE
All Sites	8,526	54.2%	0.7%	56.3%	0.4%
Pancreas	178	5.2%	2.0%	4.3%	1.1%
Liver and IBD*	105	6.1%	2.8%	4.5%	1.4%
Esophagus	189	7.1%	2.2%	7.5%	1.5%
Lung and Bronchus	1,348	10.0%	1.0%	12.0%	0.6%
Stomach	225	15.7%	2.9%	19.6%	2.0%
Oral Cavity and Pharynx	304	29.0%	3.0%	33.1%	2.0%
Leukemia	159	30.0%	4.4%	44.5%	2.9%
Brain and ONS*	84	33.8%	5.9%	41.5%	3.9%
Non-Hodgkin Lymphoma	295	40.9%	3.3%	41.5%	2.0%
Myeloma	143	42.9%	5.1%	35.8%	3.1%
Colon and Rectum	821	48.2%	2.2%	55.7%	1.6%
Kidney and Renal Pelvis	197	55.6%	4.3%	62.2%	2.7%
Larynx	188	57.2%	4.6%	69.7%	9.2%
Urinary Bladder	192	64.0%	4.8%	54.7%	3.1%
Thyroid	30	70.1%	10.5%	69.5%	3.2%
Hodgkin Lymphoma	68	76.2%	6.1%	89.6%	5.7%
Prostate	3,341	93.8%	1.1%	78.9%	3.9%

SE: Standard error of the rate.

* IBD: Intrahepatic Bile Duct. ONS: Other Nervous System.

New Jersey cases include first primary cases with an invasive behavior (except *in situ* urinary bladder), a valid age and sex, diagnosed from 1994-1997 and followed through December 2002.

U.S. cases include first primary cases with an invasive behavior (except *in situ* urinary bladder), a valid age and sex, diagnosed from 1994-1997 and followed through December 2002.

Data sources: New Jersey data - New Jersey State Cancer Registry, New Jersey Department of Health and Senior Services; U.S. data - Surveillance, Epidemiology, and End Results (SEER) Program, National Cancer Institute.

**Table 5: Cancer Five-Year Relative Survival Rates, Black Females
New Jersey and the U.S., 1994-1997**

Cancer Site	New Jersey			U.S.	
	Cases	Rates	SE	Rates	SE
All Sites	7,118	50.5%	0.7%	52.2%	0.5%
Pancreas	199	7.9%	2.2%	4.6%	1.0%
Esophagus	81	8.6%	3.4%	11.0%	2.7%
Lung and Bronchus	862	14.8%	1.4%	15.7%	0.9%
Liver and IBD*	43	17.4%	6.7%	4.1%	2.1%
Stomach	173	26.0%	4.0%	25.6%	2.7%
Myeloma	168	34.2%	4.3%	30.4%	2.5%
Leukemia	145	35.2%	4.7%	39.9%	3.0%
Brain and ONS*	72	35.8%	6.2%	38.0%	3.9%
Oral Cavity and Pharynx	122	37.8%	5.0%	49.0%	3.4%
Ovary	221	44.8%	3.8%	40.4%	2.7%
Larynx	48	47.3%	8.5%	45.4%	5.2%
Non-Hodgkin Lymphoma	243	48.9%	3.6%	56.1%	2.7%
Colon and Rectum	935	52.1%	2.0%	55.1%	1.4%
Urinary Bladder	109	55.0%	6.1%	51.4%	4.2%
Kidney and Renal Pelvis	123	56.1%	5.3%	64.9%	3.0%
Cervix Uteri	400	58.5%	2.9%	66.0%	2.2%
Corpus and Uterus, NOS*	384	61.7%	3.0%	60.5%	2.2%
Breast	2,065	73.4%	1.2%	73.9%	0.8%
Hodgkin Lymphoma	48	74.2%	7.0%	83.3%	3.5%
Thyroid	100	88.2%	4.2%	95.8%	2.0%

SE: Standard error of the rate.

* IBD: Intrahepatic Bile Duct. ONS: Other Nervous System. NOS: Not Otherwise Specified.

New Jersey cases include first primary cases with an invasive behavior (except *in situ* urinary bladder), a valid age and sex, diagnosed from 1994-1997 and followed through December 2002.

U.S. cases include first primary cases with an invasive behavior (except *in situ* urinary bladder), a valid age and sex, diagnosed from 1994-1997 and followed through December 2002.

Data sources: New Jersey data - New Jersey State Cancer Registry, New Jersey Department of Health and Senior Services; U.S. data - Surveillance, Epidemiology, and End Results (SEER) Program, National Cancer Institute.

**Table 6: Cancer Five-Year Relative Survival Rates by Race, Males
New Jersey, 1994-1997**

Cancer Site	All Races			White			Black		
	Cases	Rates	SE	Cases	Rates	SE	Cases	Rates	SE
All Sites	74,127	62.1%	0.2%	64,249	63.2%	0.3%	8,526	54.2%	0.7%
Oral Cavity and Pharynx	1,972	49.2%	1.3%	1,607	52.2%	1.5%	304	29.0%	3.0%
Lip	116	91.4%	5.4%	114	93.1%	5.4%	~	~	~
Tongue	471	51.3%	2.7%	396	53.9%	2.9%	63	29.7%	6.6%
Salivary Gland	170	69.1%	4.8%	138	70.1%	5.4%	25	56.4%	12.8%
Floor of Mouth	203	50.2%	4.0%	168	54.8%	4.5%	31	22.2%	8.1%
Gum and Other Mouth	291	51.2%	3.5%	234	56.7%	3.9%	44	16.5%	6.3%
Nasopharynx	124	52.7%	5.1%	91	51.3%	6.0%	16	59.5%	14.3%
Tonsil	226	44.1%	3.8%	179	47.2%	4.3%	45	27.3%	7.5%
Oropharynx	86	30.7%	5.6%	60	32.5%	6.8%	24	18.5%	8.7%
Hypopharynx	198	21.7%	3.3%	157	22.5%	3.7%	37	18.8%	7.4%
Digestive System	14,521	42.8%	0.5%	12,562	44.6%	0.6%	1,591	30.8%	1.4%
Esophagus	1,028	11.8%	1.2%	812	13.1%	1.4%	189	7.1%	2.2%
Stomach	1,698	21.0%	1.2%	1,407	21.5%	1.3%	225	15.7%	2.9%
Small Intestine	157	50.1%	4.8%	132	47.6%	5.2%	21	65.9%	13.7%
Colon and Rectum	8,728	61.8%	0.7%	7,760	63.2%	0.8%	821	48.2%	2.2%
Colon excluding Rectum	6,076	62.1%	0.9%	5,377	63.6%	0.9%	605	48.9%	2.6%
Rectum and Rectosigmoid Junction	2,652	61.1%	1.2%	2,383	62.2%	1.3%	216	46.3%	4.1%
Anus, Anal Canal and Anorectum	118	58.9%	5.3%	97	61.4%	5.9%	20	48.5%	12.2%
Liver and Intrahepatic Bile Duct	855	6.6%	1.0%	666	6.2%	1.1%	105	6.1%	2.8%
Liver	726	7.0%	1.1%	562	6.3%	1.2%	90	7.0%	3.2%
Intrahepatic Bile Duct	129	4.5%	2.2%	104	5.2%	2.7%	~	~	~
Gallbladder	125	20.2%	4.5%	110	19.1%	4.7%	~	~	~
Pancreas	1,512	5.5%	0.7%	1,311	5.6%	0.7%	178	5.2%	1.9%
Respiratory System	12,481	18.1%	0.4%	10,710	18.3%	0.4%	1,573	15.9%	1.1%
Larynx	1,122	66.2%	1.8%	917	67.7%	2.0%	188	57.2%	4.5%
Lung and Bronchus	10,861	13.0%	0.4%	9,341	13.4%	0.4%	1,348	10.0%	0.9%
Bones and Joints	155	69.2%	4.3%	129	67.9%	4.7%	20	78.4%	10.9%
Soft Tissue including Heart	481	63.0%	2.7%	393	66.1%	3.0%	68	40.8%	6.7%
Skin excluding Basal and Squamous	2,645	75.7%	1.1%	2,477	78.7%	1.1%	147	32.8%	4.2%
Melanoma of the Skin	2,149	82.2%	1.2%	2,117	82.6%	1.2%	20	57.1%	12.8%

SE: Standard error of the rate.

~ Statistic not displayed due to fewer than 16 cases to ensure statistical reliability.

Includes first primary cases with an invasive behavior (except *in situ* urinary bladder), a valid age and sex, diagnosed from 1994-1997 and followed through December 2002.

Data source: New Jersey State Cancer Registry, New Jersey Department of Health and Senior Services.

**Table 6 (cont'd): Cancer Five-Year Relative Survival Rates by Race, Males
New Jersey, 1994-1997**

Cancer Site	All Races			White			Black		
	Cases	Rates	SE	Cases	Rates	SE	Cases	Rates	SE
Breast	170	85.9%	4.4%	147	90.5%	4.5%	20	51.3%	15.0%
Male Genital System	24,846	98.1%	0.4%	21,137	98.9%	0.4%	3,381	93.5%	1.1%
Prostate	23,923	98.4%	0.4%	20,273	99.2%	0.4%	3,341	93.8%	1.1%
Testis	802	95.4%	0.9%	763	95.9%	0.9%	24	80.3%	8.9%
Penis	89	77.4%	6.6%	72	80.0%	7.4%	~	~	~
Urinary System	6,839	76.4%	0.8%	6,352	77.5%	0.8%	393	59.0%	3.2%
Urinary Bladder	4,815	82.3%	0.9%	4,573	83.1%	0.9%	192	64.0%	4.8%
Kidney and Renal Pelvis	1,901	62.7%	1.4%	1,664	63.3%	1.5%	197	55.6%	4.3%
Ureter	89	70.3%	7.1%	85	73.0%	7.3%	~	~	~
Eye and Orbit	149	82.8%	4.6%	142	82.1%	4.7%	~	~	~
Brain and Other Nervous System	1,155	28.7%	1.5%	1,036	28.0%	1.6%	84	33.8%	5.8%
Brain	1,079	25.5%	1.5%	971	24.5%	1.5%	76	31.5%	6.1%
Endocrine System	542	85.1%	2.0%	469	86.5%	2.1%	44	63.6%	8.8%
Thyroid	422	89.8%	2.0%	369	90.9%	2.1%	30	70.1%	10.5%
Lymphoma	3,653	58.5%	1.0%	3,213	59.5%	1.1%	363	47.6%	3.0%
Hodgkin Lymphoma	555	84.7%	1.8%	480	85.8%	1.9%	68	76.2%	6.1%
Non-Hodgkin Lymphoma	3,098	53.4%	1.1%	2,733	54.5%	1.2%	295	40.9%	3.2%
Myeloma	802	37.3%	2.1%	638	35.9%	2.3%	143	42.9%	5.1%
Leukemia	1,985	45.2%	1.4%	1,772	46.5%	1.5%	159	30.0%	4.3%
Lymphocytic Leukemia	929	71.5%	2.0%	836	73.5%	2.1%	71	49.3%	7.5%
Acute Lymphocytic Leukemia	248	60.6%	3.8%	213	61.1%	4.1%	23	48.4%	12.7%
Chronic Lymphocytic Leukemia	590	74.8%	2.6%	540	77.4%	2.7%	41	45.3%	9.8%
Myeloid and Monocytic Leukemia	906	22.3%	1.6%	805	22.5%	1.7%	75	15.7%	4.9%
Acute Myeloid Leukemia	563	15.3%	1.8%	512	15.2%	1.9%	41	14.0%	6.1%
Acute Monocytic Leukemia	28	14.4%	8.4%	26	15.9%	9.0%	~	~	~
Chronic Myeloid Leukemia	281	36.2%	3.4%	237	37.4%	3.7%	30	19.5%	9.2%
Other Leukemia	150	16.9%	3.8%	131	17.7%	4.1%	~	~	~
Miscellaneous	1,731	13.9%	1.0%	1,465	14.1%	1.1%	229	10.9%	2.4%

SE: Standard error of the rate.

Includes first primary cases with an invasive behavior (except *in situ* urinary bladder), a valid age and sex, diagnosed from 1994-1997 and followed through December 2002.

~ Statistic not displayed due to fewer than 16 cases to ensure statistical reliability.

Data source: New Jersey State Cancer Registry, New Jersey Department of Health and Senior Services.

**Table 7: Cancer Five-Year Relative Survival Rates by Race, Females
New Jersey, 1994-1997**

Cancer Site	All Races			White			Black		
	Cases	Rates	SE	Cases	Rates	SE	Cases	Rates	SE
All Sites	70,497	60.2%	0.2%	62,030	61.3%	0.2%	7,118	50.5%	0.7%
Oral Cavity and Pharynx	1,018	55.0%	1.9%	878	57.4%	2.0%	122	37.8%	5.0%
Lip	47	83.8%	8.8%	44	84.5%	9.2%	~	~	~
Tongue	251	49.5%	3.7%	218	54.4%	4.0%	30	19.2%	7.8%
Salivary Gland	160	71.0%	4.6%	143	72.6%	4.9%	17	56.1%	13.9%
Floor of Mouth	87	47.7%	6.2%	76	46.1%	6.6%	~	~	~
Gum and Other Mouth	207	66.6%	4.4%	186	67.6%	4.6%	18	54.8%	13.8%
Nasopharynx	61	55.8%	7.4%	49	53.0%	8.3%	~	~	~
Tonsil	82	40.3%	6.0%	64	43.8%	6.9%	16	27.7%	12.0%
Oropharynx	26	37.8%	10.6%	22	40.2%	11.8%	~	~	~
Hypopharynx	66	28.1%	6.3%	47	28.7%	7.5%	16	15.6%	10.6%
Digestive System	13,680	44.7%	0.5%	11,866	45.7%	0.6%	1,545	39.0%	1.5%
Esophagus	392	16.5%	2.2%	300	19.0%	2.6%	81	8.6%	3.4%
Stomach	1,166	25.5%	1.5%	935	25.2%	1.7%	173	26.0%	3.9%
Small Intestine	170	39.0%	4.5%	141	41.9%	5.0%	26	28.8%	10.2%
Colon and Rectum	8,877	59.4%	0.7%	7,816	60.3%	0.7%	935	52.1%	2.0%
Colon excluding Rectum	6,671	59.3%	0.8%	5,866	60.2%	0.9%	721	52.6%	2.3%
Rectum and Rectosigmoid Junction	2,206	59.5%	1.3%	1,950	60.7%	1.4%	214	50.4%	4.1%
Anus, Anal Canal and Anorectum	192	72.7%	4.2%	165	73.1%	4.4%	23	70.7%	12.5%
Liver and Intrahepatic Bile Duct	442	8.6%	1.5%	370	7.1%	1.6%	43	17.4%	6.7%
Liver	346	9.7%	1.8%	281	8.4%	1.9%	39	16.3%	7.0%
Intrahepatic Bile Duct	96	4.2%	2.4%	89	3.1%	2.2%	~	~	~
Gallbladder	329	12.3%	2.1%	286	11.3%	2.2%	36	19.3%	8.0%
Pancreas	1,774	0	0	1,549	0	0	199	0	0
Respiratory System	8,850	17.9%	0.5%	7,826	18.0%	0.5%	929	17.0%	1.4%
Larynx	298	53.3%	3.3%	247	54.1%	3.6%	48	47.3%	8.4%
Lung and Bronchus	8,362	16.2%	0.5%	7,411	16.3%	0.5%	862	14.8%	1.3%
Bones and Joints	129	72.2%	4.7%	116	72.6%	4.9%	~	~	~
Soft Tissue including Heart	414	61.9%	2.8%	340	60.1%	3.1%	60	69.2%	6.8%
Skin excluding Basal and Squamous	1,865	86.6%	1.1%	1,809	86.9%	1.1%	45	72.5%	7.9%
Melanoma of the Skin	1,665	86.7%	1.2%	1,641	86.9%	1.2%	~	~	~

SE: Standard error of the rate.

Includes first primary cases with an invasive behavior (except *in situ* urinary bladder), a valid age and sex, diagnosed from 1994-1997 and followed through December 2002.

~ Statistic not displayed due to fewer than 16 cases to ensure statistical reliability.

Data source: New Jersey State Cancer Registry, New Jersey Department of Health and Senior Services.

**Table 7 (cont'd): Cancer Five-Year Relative Survival Rates by Race, Females
New Jersey, 1994-1997**

Cancer Site	All Races			White			Black		
	Cases	Rates	SE	Cases	Rates	SE	Cases	Rates	SE
Breast	21,386	84.6%	0.3%	18,861	85.8%	0.4%	2,065	73.4%	1.2%
Female Genital System	9,684	67.2%	0.6%	8,414	68.5%	0.6%	1,068	57.0%	1.8%
Cervix Uteri	1,914	66.3%	1.2%	1,446	68.1%	1.4%	400	58.5%	2.8%
Corpus and Uterus, NOS	4,381	79.7%	0.8%	3,926	81.4%	0.8%	384	61.7%	3.0%
Corpus Uteri	4,192	81.1%	0.8%	3,775	82.7%	0.8%	348	62.7%	3.2%
Uterus, NOS	189	47.1%	4.2%	151	46.9%	4.7%	36	50.5%	9.8%
Ovary	2,872	49.3%	1.1%	2,593	49.6%	1.1%	221	44.8%	3.8%
Vagina	75	40.6%	6.9%	61	41.0%	8.0%	~	~	~
Vulva	347	68.2%	3.5%	312	68.1%	3.7%	31	66.0%	10.2%
Urinary System	3,163	69.5%	1.1%	2,896	70.7%	1.1%	241	55.2%	3.9%
Urinary Bladder	1,783	76.1%	1.4%	1,660	77.6%	1.5%	109	55.0%	6.0%
Kidney and Renal Pelvis	1,299	62.0%	1.7%	1,164	62.3%	1.8%	123	56.1%	5.3%
Ureter	61	54.8%	8.1%	59	54.3%	8.2%	~	~	~
Eye and Orbit	134	77.8%	4.6%	132	78.2%	4.6%	~	~	~
Brain and Other Nervous System	913	28.8%	1.7%	817	28.0%	1.7%	72	35.8%	6.2%
Brain	827	24.3%	1.7%	746	23.7%	1.7%	59	30.0%	6.5%
Endocrine System	1,333	92.6%	1.0%	1,147	93.3%	1.0%	113	82.9%	4.4%
Thyroid	1,236	95.2%	0.9%	1,065	95.7%	0.9%	100	88.2%	4.2%
Lymphoma	3,317	62.6%	1.0%	2,966	63.7%	1.1%	291	53.3%	3.3%
Hodgkin Lymphoma	481	85.0%	1.9%	428	86.3%	2.0%	48	74.2%	7.0%
Non-Hodgkin Lymphoma	2,836	58.5%	1.1%	2,538	59.6%	1.2%	243	48.9%	3.6%
Myeloma	828	31.6%	1.9%	642	31.0%	2.1%	168	34.2%	4.3%
Leukemia	1,602	43.5%	1.5%	1,424	44.1%	1.6%	145	35.2%	4.7%
Lymphocytic Leukemia	723	66.4%	2.3%	651	66.8%	2.4%	60	62.2%	8.1%
Acute Lymphocytic Leukemia	188	57.6%	4.3%	164	60.3%	4.6%	18	40.6%	14.2%
Chronic Lymphocytic Leukemia	484	70.9%	2.9%	443	70.2%	3.0%	37	77.0%	9.9%
Myeloid and Monocytic Leukemia	747	25.1%	1.8%	663	25.9%	1.9%	69	13.1%	4.8%
Acute Myeloid Leukemia	514	19.0%	2.0%	466	19.8%	2.1%	38	5.6%	4.2%
Acute Monocytic Leukemia	22	5.6%	5.9%	20	6.1%	6.4%	~	~	~
Chronic Myeloid Leukemia	189	44.6%	4.2%	160	46.4%	4.6%	26	28.5%	10.7%
Other Leukemia	132	24.5%	4.6%	110	21.9%	4.8%	16	28.3%	12.7%
Miscellaneous	2,181	12.9%	0.8%	1,896	12.8%	0.9%	244	12.1%	2.4%

SE: Standard error of the rate.

Includes first primary cases with an invasive behavior (except *in situ* urinary bladder), a valid age and sex, diagnosed from 1994-1997 and followed through December 2002.

~ Statistic not displayed due to fewer than 16 cases to ensure statistical reliability.

Data source: New Jersey State Cancer Registry, New Jersey Department of Health and Senior Services.

Table 8: Cancer Five-Year Relative Survival Rates for Selected Cancers by Age, Race and Sex, New Jersey, 1994-1997

Age	All Races				White				Black			
	Male		Female		Male		Female		Male		Female	
	Cases	Rates	Cases	Rates	Cases	Rates	Cases	Rates	Cases	Rates	Cases	Rates
All Sites Combined												
15-44	5,107	63.0%	8,165	77.6%	4,172	67.5%	6,681	80.2%	753	36.5%	1,167	62.2%
45-54	7,222	56.6%	9,986	71.8%	5,920	58.9%	8,397	73.9%	1,087	43.6%	1,241	56.9%
55-64	15,450	63.8%	12,292	62.9%	12,730	64.9%	10,514	64.4%	2,375	59.2%	1,505	50.9%
65-74	25,898	64.9%	18,389	56.1%	22,768	65.4%	16,465	57.5%	2,775	60.9%	1,683	43.5%
75+	19,923	58.1%	21,276	45.9%	18,236	58.7%	19,649	46.5%	1,460	53.5%	1,472	38.8%
Female Breast												
15-44	--	--	2,943	83.5%	--	--	2,416	85.5%	--	--	406	72.0%
45-54	--	--	4,414	86.0%	--	--	3,752	87.6%	--	--	492	72.0%
55-64	--	--	4,193	86.4%	--	--	3,624	87.7%	--	--	470	75.4%
65-74	--	--	5,101	86.0%	--	--	4,655	86.9%	--	--	397	75.4%
75+	--	--	4,735	80.4%	--	--	4,414	80.8%	--	--	300	73.1%
Cervical												
15-44	--	--	772	78.7%	--	--	590	80.3%	--	--	158	71.0%
45-54	--	--	439	67.6%	--	--	315	69.7%	--	--	108	59.9%
55-64	--	--	250	56.1%	--	--	187	56.9%	--	--	50	48.1%
65-74	--	--	235	58.3%	--	--	188	61.3%	--	--	38	38.6%
75+	--	--	218	33.1%	--	--	166	34.5%	--	--	46	32.4%
Colorectal												
15-44	347	60.6%	295	62.1%	268	63.4%	222	65.7%	64	43.5%	58	50.1%
45-54	800	63.7%	678	60.0%	668	65.0%	533	62.6%	103	50.7%	120	45.2%
55-64	1,740	62.6%	1,167	62.9%	1,474	63.5%	958	64.0%	223	54.9%	187	57.4%
65-74	3,039	62.2%	2,495	62.7%	2,730	64.1%	2,189	63.5%	276	44.0%	269	56.8%
75+	2,801	60.0%	4,242	55.1%	2,619	61.0%	3,914	55.8%	155	45.5%	301	45.3%
Lung												
15-44	287	19.4%	257	22.4%	217	22.2%	195	23.6%	62	8.2%	56	16.2%
45-54	1,083	14.2%	811	19.5%	851	14.6%	675	19.5%	207	12.1%	112	20.2%
55-64	2,464	15.4%	1,740	18.6%	2,004	16.3%	1,493	19.2%	413	10.6%	225	14.3%
65-74	4,125	13.4%	2,904	16.9%	3,622	13.7%	2,588	17.3%	447	9.7%	293	13.8%
75+	2,902	7.7%	2,649	10.9%	2,647	7.9%	2,459	10.7%	219	6.3%	176	11.8%
Melanoma of the Skin												
15-44	335	83.0%	442	91.5%	329	83.6%	436	91.4%	~	~	~	~
45-54	387	80.3%	289	93.0%	378	80.5%	286	93.0%	~	~	~	~
55-64	458	86.9%	263	89.1%	446	87.8%	258	89.2%	~	~	~	~
65-74	577	83.2%	323	83.5%	574	83.4%	317	83.9%	~	~	~	~
75+	385	74.3%	346	73.0%	384	74.0%	342	73.5%	~	~	~	~
Prostate												
15-44	50	96.6%	--	--	34	97.3%	--	--	~	~	--	--
45-54	1,214	97.1%	--	--	973	97.3%	--	--	226	95.4%	--	--
55-64	5,307	98.3%	--	--	4,193	99.0%	--	--	1,020	96.1%	--	--
65-74	10,317	100.0%	--	--	8,817	100.0%	--	--	1,371	95.6%	--	--
75+	7,035	94.9%	--	--	6,256	96.3%	--	--	711	83.8%	--	--

-- Non-applicable sex.

~ Statistic not displayed due to fewer than 16 cases to ensure statistical reliability.

Includes first primary cases with an invasive behavior (except *in situ* urinary bladder), a valid age and sex, diagnosed from 1994-1997 and followed through December 2002.

Data source: New Jersey State Cancer Registry, New Jersey Department of Health and Senior Services.

**Table 9: Five-Year Relative Survival Rates for Selected Cancers by Race, Sex and Stage
New Jersey, 1994-1997**

Stage	All Races				White				Black			
	Male		Female		Male		Female		Male		Female	
	Cases	Rates	Cases	Rates	Cases	Rates	Cases	Rates	Cases	Rates	Cases	Rates
Female Breast												
Local	--	--	12,023	96.8%	--	--	10,786	97.0%	--	--	1,003	94.2%
Regional	--	--	6,242	76.8%	--	--	5,383	78.9%	--	--	715	60.9%
Distant	--	--	1,366	18.4%	--	--	1,152	19.7%	--	--	191	12.1%
Unstaged	--	--	1,755	78.4%	--	--	1,540	78.7%	--	--	156	71.0%
Cervical												
Local	--	--	893	87.2%	--	--	701	87.6%	--	--	165	84.0%
Regional	--	--	621	46.6%	--	--	447	48.6%	--	--	145	37.4%
Distant	--	--	158	7.6%	--	--	125	9.3%	--	--	31	0.0%
Unstaged	--	--	242	75.1%	--	--	173	78.0%	--	--	59	69.8%
Colorectal												
Local	2,739	90.7%	2,755	86.3%	2,462	92.0%	2,473	86.2%	230	77.1%	248	85.4%
Regional	3,452	65.0%	3,540	62.5%	3,073	66.3%	3,112	63.3%	319	53.9%	374	56.2%
Distant	1,603	6.0%	1,562	9.1%	1,396	5.7%	1,327	9.5%	188	8.8%	211	5.9%
Unstaged	934	62.6%	1,020	54.2%	829	64.9%	904	55.2%	84	38.4%	102	45.9%
Lung												
Local	1,647	46.2%	1,454	49.5%	1,439	46.7%	1,300	49.9%	188	41.0%	144	47.0%
Regional	2,836	13.7%	2,063	16.8%	2,396	14.4%	1,802	17.1%	396	9.0%	239	13.6%
Distant	4,698	1.9%	3,439	2.6%	4,038	1.9%	3,046	2.5%	579	1.9%	355	2.9%
Unstaged	1,680	10.7%	1,405	14.3%	1,468	10.9%	1,262	14.0%	185	7.5%	124	13.4%
Melanoma of the Skin												
Local	1,368	91.2%	1,124	92.1%	1,355	91.4%	1,110	92.1%	~	~	~	~
Regional	155	46.9%	96	55.8%	151	46.5%	93	57.6%	~	~	~	~
Distant	120	14.5%	70	31.9%	116	15.0%	68	32.7%	~	~	~	~
Unstaged	506	84.1%	375	88.2%	495	85.1%	370	87.9%	~	~	~	~
Prostate												
Local	15,500	100.0%	--	--	13,210	100.0%	--	--	2,100	100.0%	--	--
Regional	2,275	98.2%	--	--	1,865	97.5%	--	--	377	100.0%	--	--
Distant	1,252	28.6%	--	--	931	27.8%	--	--	296	30.1%	--	--
Unstaged	4,896	93.5%	--	--	4,267	94.8%	--	--	568	83.4%	--	--

-- Non-applicable sex.

~ Statistic not displayed due to fewer than 16 cases to ensure statistical reliability.

Includes first primary cases with an invasive behavior, a valid age and sex, diagnosed from 1994-1997 and followed through December 2002.

Data source: New Jersey State Cancer Registry, New Jersey Department of Health and Senior Services.

**Table 10: Five-Year Relative Survival Trends for Selected Cancers
by Race, Sex and Years, New Jersey, 1979-1997**

Cancer	All Races				White				Black			
	Male		Female		Male		Female		Male		Female	
	Cases	Rates	Cases	Rates	Cases	Rates	Cases	Rates	Cases	Rates	Cases	Rates
All Sites												
1979-83	68,447	41.4%	69,437	52.1%	61,669	42.6%	63,154	52.9%	6,332	29.7%	5,799	42.9%
1984-88	75,400	44.9%	77,260	56.6%	67,483	46.3%	69,705	57.4%	7,319	32.2%	6,810	47.1%
1989-93	88,978	55.5%	84,746	58.3%	78,779	57.1%	75,493	59.1%	9,166	42.9%	8,085	49.5%
1994-97	74,127	62.1%*	70,497	60.2%*	64,249	63.2%*	62,030	61.3%*	8,526	54.2%*	7,118	50.5%*
Female Breast												
1979-83	--	--	19,896	71.7%	--	--	18,223	72.5%	--	--	1,512	61.6%
1984-88	--	--	23,388	77.7%	--	--	21,243	78.8%	--	--	1,893	66.1%
1989-93	--	--	26,040	82.2%	--	--	23,279	83.1%	--	--	2,351	73.2%
1994-97	--	--	21,386	84.6%*	--	--	18,861	85.8%*	--	--	2,065	73.4%*
Cervical												
1979-83	--	--	2,318	60.3%	--	--	1,786	60.1%	--	--	497	60.0%
1984-88	--	--	2,297	62.3%	--	--	1,750	64.6%	--	--	507	53.4%
1989-93	--	--	2,535	66.4%	--	--	1,909	68.0%	--	--	548	59.7%
1994-97	--	--	1,914	66.3%*	--	--	1,446	68.1%*	--	--	400	58.5%
Colorectal												
1979-83	11,233	50.6%	11,350	49.7%	10,447	51.4%	10,503	50.4%	724	40.5%	784	40.0%
1984-88	12,232	54.9%	11,998	55.7%	11,312	55.7%	10,910	56.3%	841	44.0%	996	48.9%
1989-93	11,736	58.9%	11,590	58.4%	10,676	59.6%	10,490	59.1%	910	49.7%	992	50.8%
1994-97	8,728	61.8%*	8,877	59.4%*	7,760	63.2%*	7,816	60.3%*	821	48.2%*	935	52.1%*
Lung												
1979-83	14,301	10.2%	6,549	13.9%	12,645	10.3%	5,912	13.9%	1,589	9.2%	606	13.6%
1984-88	14,860	10.5%	8,230	15.2%	13,004	10.7%	7,391	15.2%	1,776	8.8%	790	14.6%
1989-93	14,387	11.7%	9,655	15.1%	12,419	12.0%	8,638	15.3%	1,826	9.7%	941	12.9%
1994-97	10,861	13.0%*	8,362	16.2%*	9,341	13.4%*	7,411	16.3%*	1,348	10.0%	862	14.8%
Melanoma of the Skin												
1979-83	1,712	71.4%	1,458	81.2%	1,692	71.8%	1,430	81.2%	16	46.4%	26	83.1%
1984-88	1,935	74.9%	1,614	84.4%	1,921	75.0%	1,590	84.6%	8	~	18	65.8%
1989-93	2,010	77.0%	1,589	84.1%	1,986	77.2%	1,558	84.4%	20	61.5%	27	63.9%
1994-97	2,149	82.2%*	1,665	86.7%*	2,117	82.6%*	1,641	86.9%*	20	57.1%	14	~
Prostate												
1979-83	11,661	66.0%	--	--	10,274	67.2%	--	--	1,334	57.1%	--	--
1984-88	13,928	71.3%	--	--	12,264	72.8%	--	--	1,602	59.9%	--	--
1989-93	26,150	90.4%	--	--	23,078	91.5%	--	--	2,874	80.9%	--	--
1994-97	23,923	98.4%*	--	--	20,273	99.2%*	--	--	3,341	93.8%*	--	--

* The difference between 1979-83 and 1994-97 is statistically significant.

-- Non-applicable sex.

~ Statistic not displayed due to fewer than 16 cases to ensure statistical reliability.

Data presented in this table represent first primary cases with an invasive behavior (except *in situ* urinary bladder), a valid age and sex, diagnosed from 1979-1997 followed through December 2002.

Data source: New Jersey State Cancer Registry, New Jersey Department of Health and Senior Services.

Table 11: Female Breast Cancer Five-Year Relative Survival Trends by Stage at Diagnosis and Race, New Jersey, 1984-1997

Diagnosis Year	White						Black					
	Local		Regional		Distant		Local		Regional		Distant	
	Cases	Rates	Cases	Rates	Cases	Rates	Cases	Rates	Cases	Rates	Cases	Rates
1984	1,750	88.3%	1,176	73.2%	377	23.2%	147	85.1%	114	51.0%	35	15.6%
1985	1,982	91.0%	1,366	70.7%	397	24.9%	146	84.0%	141	57.1%	46	24.2%
1986	1,998	91.5%	1,416	70.6%	387	27.1%	155	86.0%	137	55.9%	47	16.3%
1987	2,317	93.1%	1,466	75.9%	340	20.0%	166	91.0%	157	57.7%	49	9.3%
1988	2,419	95.1%	1,554	73.5%	360	24.4%	181	90.6%	173	61.3%	43	17.9%
1989	2,283	93.9%	1,468	74.1%	342	21.9%	200	89.2%	177	58.5%	44	20.6%
1990	2,488	94.3%	1,471	77.7%	315	31.1%	190	90.5%	167	62.8%	51	18.0%
1991	2,544	95.7%	1,308	75.2%	373	24.9%	232	97.8%	141	57.8%	43	20.3%
1992	2,631	94.8%	1,346	75.7%	359	16.0%	250	95.3%	165	63.5%	54	13.6%
1993	2,548	98.2%	1,329	75.3%	290	19.3%	208	97.0%	173	62.4%	44	11.2%
1994	2,517	96.6%	1,295	78.8%	265	20.4%	194	93.0%	184	54.7%	50	18.1%
1995	2,678	96.8%	1,318	78.0%	311	17.2%	246	94.8%	181	59.9%	49	4.6%
1996	2,763	97.2%	1,342	79.6%	265	15.9%	291	96.1%	157	64.8%	51	11.6%
1997	2,828	97.5%	1,428	79.2%	311	24.9%	272	92.5%	193	64.7%	41	15.7%

Data presented in this table are based on invasive first primary female breast cancer cases with a valid age and sex and diagnosed in 1984-1997 and followed through 2002.

Data source: New Jersey State Cancer Registry, New Jersey Department of Health and Senior Services.

Table 12: Prostate Cancer Five-Year Relative Survival Trends by Stage at Diagnosis and Race, New Jersey, 1984-1997

Diagnosis Year	White						Black					
	Local		Regional		Distant		Local		Regional		Distant	
	Cases	Rates	Cases	Rates	Cases	Rates	Cases	Rates	Cases	Rates	Cases	Rates
1984	1,301	85.6%	150	63.4%	439	28.2%	165	81.8%	26	49.2%	81	23.8%
1985	1,385	82.8%	163	72.7%	500	23.8%	137	76.0%	26	56.7%	119	31.3%
1986	1,422	85.2%	193	57.6%	509	31.0%	145	84.7%	19	36.4%	108	28.7%
1987	1,493	87.6%	250	69.8%	499	25.9%	145	86.3%	30	51.9%	89	20.5%
1988	1,503	93.4%	289	78.8%	513	26.3%	170	83.9%	37	70.0%	136	25.7%
1989	1,530	92.5%	317	80.9%	518	28.8%	141	88.9%	53	82.5%	103	28.4%
1990	1,760	96.8%	425	91.2%	553	36.7%	186	91.9%	63	85.8%	114	35.4%
1991	2,796	100.0%	661	92.2%	543	35.8%	246	93.8%	79	83.6%	114	27.7%
1992	3,700	100.0%	821	97.8%	455	37.0%	363	97.9%	113	93.3%	123	31.4%
1993	3,288	100.0%	700	95.7%	345	37.5%	436	100.0%	116	94.3%	121	18.1%
1994	2,884	100.0%	527	98.9%	269	27.9%	417	99.7%	105	98.9%	79	25.5%
1995	3,081	100.0%	494	96.6%	233	30.7%	498	100.0%	102	100.0%	84	28.7%
1996	3,410	100.0%	439	95.5%	225	29.4%	557	100.0%	83	96.2%	78	39.9%
1997	3,835	100.0%	405	97.7%	204	22.7%	628	100.0%	87	100.0%	55	24.4%

Data presented in this table are based on invasive first primary prostate cancer cases with a valid age and sex and diagnosed in 1984-1997 and followed through 2002.

Data source: New Jersey State Cancer Registry, New Jersey Department of Health and Senior Services.

Table 13: Female Breast Cancer Relative Survival Rates by Years Since Diagnosis, Stage and Race, New Jersey, 1984-1997

Years after Diagnosis	White/Local		Black/Local		White/Regional		Black/Regional		White/Distant		Black/Distant	
	Cases*	Rate	Cases*	Rate	Cases*	Rate	Cases *	Rate	Cases*	Rate	Cases*	Rate
1	33,746	99.8%	2,878	100.0%	19,283	97.4%	2,260	94.6%	4,692	64.7%	647	61.5%
2	32,623	98.9%	2,772	98.4%	18,241	91.5%	2,062	82.8%	2,934	47.6%	385	39.7%
3	31,459	97.8%	2,652	95.6%	16,695	85.4%	1,757	73.1%	2,092	35.7%	238	27.3%
4	30,195	96.3%	2,492	94.0%	15,159	80.2%	1,507	65.0%	1,514	28.5%	157	18.1%
5	28,790	94.9%	2,369	92.4%	13,785	75.5%	1,293	59.7%	1,163	22.4%	100	15.4%
6	27,371	93.5%	2,231	90.6%	12,558	71.5%	1,150	56.1%	882	18.7%	81	13.0%
7	23,833	92.1%	1,927	88.4%	10,627	68.0%	945	52.5%	658	16.0%	63	11.2%
8	20,586	90.9%	1,606	87.2%	8,993	65.1%	792	49.9%	518	14.2%	49	9.4%
9	17,657	89.7%	1,356	85.8%	7,609	62.7%	665	46.9%	421	13.0%	38	8.9%
10	15,056	88.6%	1,162	84.5%	6,433	60.4%	544	44.6%	350	11.8%	33	8.6%
11	12,617	87.4%	973	82.8%	5,409	58.4%	450	42.2%	281	10.7%	29	7.9%
12	10,355	86.4%	769	81.7%	4,471	56.7%	356	41.9%	224	9.7%	24	7.5%
13	8,316	85.2%	600	80.5%	3,660	54.8%	302	40.9%	165	8.7%	21	6.2%
14	6,506	83.9%	476	79.3%	2,852	53.0%	245	39.7%	117	7.9%	15	6.2%
15	4,966	83.1%	357	77.3%	2,179	51.6%	178	38.1%	87	7.9%	13	5.6%
16	3,507	82.3%	253	77.3%	1,551	50.7%	125	36.8%	75	7.2%	9	4.3%
17	2,294	81.0%	166	77.3%	1,027	48.6%	82	36.8%	49	6.6%	5	4.3%
18	1,356	80.0%	105	77.3%	586	47.1%	44	36.8%	24	6.6%	2	4.3%
19	570	79.1%	53	76.7%	234	45.9%	18	**	9	5.90%	1	**

* Number alive at the start of the year.

** Cases were censored (died) before the study cut-off year of 2002.

Data presented in this table are based on invasive first primary female breast cancer cases with a valid age and sex, diagnosed in 1984-1997 and followed through 2002.

Data source: New Jersey State Cancer Registry, New Jersey Department of Health and Senior Services.

Table 14: Prostate Cancer Five-Year Relative Survival Rates by Years Since Diagnosis, Stage and Race, New Jersey, 1984-1997

Years after Diagnosis	White/Local		Black/Local		White/Regional		Black/Regional		White/Distant		Black/Distant	
	Cases*	Rate	Cases*	Rate	Cases*	Rate	Cases*	Rate	Cases*	Rate	Cases*	Rate
1	33,388	100.0%	4,234	99.8%	5,834	99.4%	939	98.9%	5,805	81.1%	1,404	82.1%
2	31,753	100.0%	3,971	99.6%	5,541	97.8%	876	95.8%	4,408	60.6%	1,071	59.4%
3	30,068	100.0%	3,736	99.2%	5,206	95.1%	806	94.3%	3,080	46.2%	724	45.6%
4	28,334	100.0%	3,500	98.3%	4,821	93.1%	746	92.3%	2,187	36.6%	519	35.2%
5	26,635	99.6%	3,253	97.4%	4,488	90.7%	690	90.1%	1,607	30.5%	370	27.9%
6	24,858	99.0%	3,008	96.8%	4,142	89.3%	636	87.5%	1,235	26.4%	271	23.6%
7	20,114	98.2%	2,340	95.3%	3,553	86.9%	517	86.2%	955	23.0%	204	20.1%
8	16,093	97.7%	1,776	94.2%	2,956	84.4%	416	82.8%	734	20.2%	150	17.0%
9	12,827	96.6%	1,294	92.2%	2,375	82.4%	305	79.9%	566	17.8%	110	14.3%
10	9,985	95.8%	949	91.0%	1,844	80.1%	210	75.9%	439	15.6%	82	13.4%
11	7,369	94.1%	648	88.9%	1,286	76.4%	136	75.9%	318	13.8%	63	12.4%
12	4,776	93.0%	424	85.3%	758	74.3%	87	75.2%	222	12.0%	45	12.0%
13	3,171	91.3%	293	80.4%	411	71.0%	48	67.6%	139	10.4%	34	9.3%
14	2,250	89.4%	200	75.6%	242	64.2%	27	67.1%	88	9.3%	18	7.7%
15	1,575	87.4%	138	73.1%	142	61.2%	17	67.1%	58	8.3%	10	6.7%
16	1,045	86.1%	96	73.1%	81	54.5%	9	67.1%	38	7.6%	7	6.3%
17	673	86.1%	69	73.1%	35	51.6%	4	67.1%	23	5.5%	5	5.3%
18	388	86.1%	45	73.1%	18	51.6%	4	67.1%	9	5.2%	2	0.0%
19	156	86.1%	24	73.1%	6	11.7%	2	30.8%	3	3.0%	0	**

* Number alive at the start of the year.

** Cases were censored (died) before the study cut-off year of 2002.

Data presented in this table are based on invasive first primary prostate cancer cases with a valid age and sex, diagnosed in 1984-1997 and followed through 2002.

Data source: New Jersey State Cancer Registry, New Jersey Department of Health and Senior Services.

APPENDIX B: VITAL STATUS FOLLOW-UP PERCENTS

Vital Status Follow-Up Percents for All Cases Included in the Survival Cohort, by Year of Diagnosis, Race, Sex and Age, New Jersey, 1979-1997

	Colorectal	Lung	Melanoma	Breast	Prostate	All Cancers	Total Cases
Year of Diagnosis							
1979	96.2	98.9	87.2	93.5	98.1	95.4	25,736
1980	96.0	99.2	83.3	92.2	98.3	95.0	27,172
1981	96.7	99.0	87.7	92.2	98.0	95.1	27,243
1982	96.2	99.0	86.6	92.2	98.1	95.1	28,527
1983	96.3	98.8	88.5	92.3	97.8	94.9	29,206
1984	96.1	98.5	88.1	92.0	97.6	94.5	28,638
1985	95.1	98.6	85.0	90.7	97.6	93.9	30,608
1986	95.8	98.5	86.5	92.2	97.0	94.1	30,316
1987	95.5	98.1	87.3	91.6	96.1	94.0	31,038
1988	94.8	98.3	86.2	90.9	96.6	94.1	32,060
1989	95.6	98.6	90.5	91.0	96.5	94.4	31,880
1990	95.5	98.7	88.2	90.6	96.3	94.2	33,718
1991	96.0	98.9	92.5	90.2	96.5	94.7	35,036
1992	95.8	99.1	90.1	91.4	96.1	94.6	37,072
1993	95.6	98.8	91.3	91.1	96.0	94.7	36,018
1994	95.5	98.5	93.1	91.1	95.2	94.2	34,831
1995	96.1	98.6	92.8	92.0	95.0	94.5	36,071
1996	95.6	98.6	90.4	90.9	95.1	94.2	36,422
1997	95.4	98.4	91.0	91.0	95.1	94.2	37,300
Race							
White	96.1	98.8	89.0	92.0	96.6	94.8	542,562
Black	94.3	98.5	90.6	89.3	95.3	93.8	59,155
Other	81.6	88.7	81.3	73.0	81.2	79.1	7,175
Sex							
Female	95.0	98.3	85.8	91.5	--	92.9	301,940
Male	96.6	98.9	91.5	92.6	96.3	96.0	306,952
Age							
0-14	~	~	56.5	~	~	53.7	3,934
15-44	84.2	93.8	74.7	81.1	84.6	80.1	54,251
45-54	90.1	97.3	86.7	87.0	89.6	90.7	67,424
55-64	94.3	98.5	92.5	92.9	94.5	95.4	131,913
65-74	96.9	99.2	96.4	95.1	96.5	97.2	188,356
75+	97.6	99.5	97.0	96.0	97.5	98.0	163,014
Total	95.8	98.7	89.0	91.5	96.3	94.5	608,892

-- Non-applicable sex.

~ Statistic not displayed due to fewer than 16 cases to ensure statistical reliability.

Note: First primary cases with a valid age and sex diagnosed in 1979-1997 that had a vital status of death or were known to be alive as of December 2002 were included as followed-up.

Data source: New Jersey State Cancer Registry, New Jersey Department of Health and Senior Services.