

75c
974.905
044.4
C.1

DEPARTMENT OF HUMAN SERVICES

INTER-OFFICE COMMUNICATION

DATE March 18, 1997

TO William Waldman
Commissioner

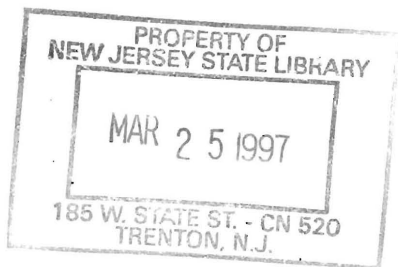
FROM Karen Highsmith
Director



SUBJECT CURRENT PROGRAM STATISTICS

Attached please find CURRENT PROGRAM STATISTICS, including the FDP Statistical Summary for January 1997. Also included are explanatory notes for the various data elements and the annual county AFDC and Food Stamp Program Statistical supplements.

Should you have any questions, please feel free to call me.



KH:kas:c

Attachments

c Guhl
Grant
Miller
Tencza

State of New Jersey
Department of Human Services
Division of Family Development

CURRENT PROGRAM STATISTICS



January 1997
Karen Highsmith, Director

State of New Jersey
Department of Human Services
Division of Family Development

CURRENT PROGRAM STATISTICS
January 1997

TABLE OF CONTENTS

	Page
Highlights of Current Program Statistics	1-3
 Statistics by County, January 1997	
Table 1 AFDC	4
Graph 1 Current AFDC Families.....	4
Table 2 Food Stamp Program.....	5
Graph 2 Current Food Stamp Households/Persons	5
Table 3 AFDC/SSI Emergency Assistance Program	6
Graph 3 Current AFDC Families Receiving Emergency Assistance.....	6
Table 4 Family Development Program.....	7
 State Summary, 1995 - 1997	
Table 5 AFDC, January 1995 - January 1997.....	8
Graph 4 Families Receiving AFDC, 1/95 - 1/97	8
Table 6 Food Stamp Program, January 1995 - January 1997	9
Graph 5 Food Stamp Households, 1/95 - 1/97	9
Graph 6 Food Stamp Recipients, 1/95 - 1/97.....	10
Table 7 AFDC Emergency Assistance Program, January 1995 - January 1997	11
Graph 7 AFDC Families Receiving Emergency Assistance, 1/95 - 1/97	11
Table 8 JOBS/FDP Participation Rates, by County and Statewide, January 1995 - January 1997	12
Graph 8 JOBS/FDP Participation Rates, 1/95 - 1/97	12-13
Table 9 General Assistance, and GA Emergency Assistance, October 1994 - October 1996	14
Graph 9 General Assistance Recipients, 10/94-10/96	14
Table 10 Child Support and Paternity, Fiscal Years 1996-1997	15
Explanatory Notes.....	16-17
 Annual Supplement, County Summaries, January 1996 - January 1997	
A. AFDC Program	Section A. 1-21
A. Food Stamp Program.....	Section B. 1-21

Highlights of Current Program Statistics

AFDC (Tables 1 and 5, Graphs 1 and 4)

104,400 eligible families in New Jersey were receiving AFDC as of the end of January 1997:

- **94,400** single head of household families (Regular AFDC, C segment).
- Among two-parent families, about **2300** Unemployed Parent families (F Segment) and **2700** State AFDC families (N Segment).
- **5000** Medicaid Only families.
- The largest numbers of families by county: Essex with **26,900**, Hudson with **16,600**, and Camden County with **12,200**. (53.3 percent of all AFDC families)
- Other counties ranged from **134** families in Hunterdon to **6,747** in Passaic County, with six counties below **1000** families.

There were almost 1000 fewer eligible AFDC families in January 1997 than in December 1996 and a decline of 17,500 over the past two years. More than two thirds of that decrease occurred in 1996.

- There were about **900** fewer eligible C segment families in January 1997 than in December 1996 and more than **15,000** less than two years ago.
- F segment families declined from nearly **3900** in January 1995 to less than **2300** in January 1997.
- State AFDC (N segment) was less than **3400** in January 1995 and slowly declined to less than **2700** by January 1997.
- Medicaid Only families averaged nearly **5200** for 1995 and less than **5100** for 1996. There were over **100** less Medicaid Only families in January 1997 than a year earlier.

FOOD STAMP PROGRAM (Tables 2 and 6, Graphs 2, 5, and 6)

At the end of January 1997, 206,500 households were participating in the Food Stamp Program:

- **97,600** AFDC households with **310,000** persons.
- **109,000** Other Low Income households with **165,000** persons.
- With a total of more than **475,000** persons, including about **228,000** adults and almost **247,000** children
- **48.7 percent** of the households were in Essex (**52,000**), Hudson (**28,700**) and Camden (**19,900**) Counties.
- The number of adults exceeded the number of children in Food Stamp households in **seven** counties (Bergen, Hunterdon, Monmouth, Morris, Somerset, Sussex, and Warren).

Food Stamp households in New Jersey remained in the 220,000 to 223,000 range from January 1995 through June 1996, except for a spike in March 1995. From May 1996 to January 1997 total Food Stamp households declined from almost 223,000 to less than 207,000, or about 2000 per month.

- The number of Other Low Income households has exceeded the number of AFDC(FS) households since November 1995, with a difference of more than **11,000** in December 1996. The number of Other Low Income households receiving Food Stamps was less than **108,000** in January 1995, peaked at close to **115,000** in May 1996, then dropped to near the January 1995 level two years later. There were almost **114,000** AFDC(FS) households in January 1995 and less than **98,000** in January 1997.
- After a peak of **529,000** in March 1995, the number of Total Recipients has been moving downward. Near **515,000** from July 1995 through May 1996, the level dropped substantially and was about **475,000** by January 1997. This is a total decline of more than **50,000** or over **10 percent** since March 1995.
- The number of Recipient Adults averaged **246,000** for 1994 through the first five months of 1996. From May 1996 through January 1997 the number declined from about **247,000** to **228,000**.
- After a peak of more than **279,000** in March 1995, the number of Recipient Children has been moving downward. By January 1997 the level was below **247,000**.

EMERGENCY ASSISTANCE (Tables 3, 7 and 9, Graphs 3, 7 and 9)

In January 1997 4059 eligible AFDC families and 288 SSI recipients received Emergency Assistance (EA) payments in New Jersey. For AFDC families this included:

- **1462** families with Temporary Rental Assistance (TRA)
- **310** motel placements and **382** emergency shelter placements
- All other AFDC-EA accounted for **1905** families, including back rent, back utilities, security deposits, furnishings, clothing and food allowance, or transitional housing.
- **1104** AFDC families in Essex County received EA, and **534** in Middlesex. All other counties had between **5** and **372**, with ten counties below **100**.

In the past two years, the average number of AFDC families receiving EA payments was 5800 in 1995, and 4800 in 1996. The January 1997 level of 4059 matched the November 1996 low.

- The number of AFDC families provided TRA each month has declined steadily from nearly **2600** in January 1995 to less than **1500** in January 1997.
- Emergency Shelter has been provided to around **300 to 400** families each month in the last two years. Motel Housing declined from close to **500** in early 1995 to about **300** in 1996-1997.
- Nearly **2700** families received Other EA in January 1995 compared to **1900** in January 1997.

For 1994 there were an average of 7800 GA EA recipients, 7400 for 1995, and 7000 for the first ten months of 1996. TRA payments were made to an average of 4700 recipients in 1994, 4400 in 1995, and less than 4200 in the first ten months of 1996.

JOBS/FDP PARTICIPATION RATES (Table 8, Graph 8)

After three months with a Statewide JOBS/FDP participation rate of almost 32 percent, the January 1997 rate dropped to just below 30 percent. This seasonal drop of two points was smaller than last year's decline of almost three points from December 1995 to January 1996. January 1997's rate is more than six percentage points above January 1996, and almost ten percentage points above two years ago when the rate was 20.4 percent. A clear upward shift has been evident over the past two years. Only one county was below 20 percent in January.

- Most counties have shown upward movement in participation rates in the past two years, including Burlington, Camden, Cape May, Essex, Gloucester, Hudson, Hunterdon, Middlesex, Monmouth, Ocean, and Passaic. Atlantic, Cumberland and Warren have maintained high participation rates. Hunterdon, Salem, Somerset and Sussex have generally been high but with large month-to-month fluctuations. Morris increased markedly in 1995 and remains at or near 100 percent. Bergen, Mercer and Union have had little or no increase overall.
- For December 1996 County rates were distributed as follows:

Under 20 percent	-- Camden
20 to 29 percent	-- Bergen, Cape May, Essex, Gloucester, Hudson, Hunterdon, Mercer, Ocean, Union
30 to 39 percent	-- Burlington, Monmouth, Passaic
40 to 49 percent	-- Middlesex, Salem, Sussex, Warren
Over 50 percent	-- Atlantic, Cumberland, Morris, Somerset
- From December 1996 to January 1997, participation rates decreased in 16 counties.

GENERAL ASSISTANCE (Table 9, Graph 9)

October 1996 (the latest available information) had the lowest number of GA recipients in the two year period, and was the fourth consecutive month with less than 31,000. GA recipients averaged 36,200 for 1994, 33,600 in 1995 and 32,300 for the first ten months of 1996.

- The number of employable GA recipients closely mirrored the changes in total GA recipients. The October level was the second month **below 20,000**, following three months **below 21,000**. Employable GA recipients averaged about **24,400** for 1994, and about **22,400** in 1995 and **21,600** for the first ten months of 1996.
- Over the two year period Unemployable GA recipients remained within a relatively narrow range. The level remained around **11,000 to 12,000** from September 1994 through October 1995. It declined to about **10,000** from November 1995 through January 1996, and remained **between 10,000 and 11,000** through October 1996.

CHILD SUPPORT AND PATERNITY (Table 10)

The total distribution of collections of the Child Support and Paternity Program increased by 11.1 percent from \$250 million in the first six months of SFY 1996 (July - December 1995) to \$278 million in the first six months of SFY 1997 (July - December 1996).

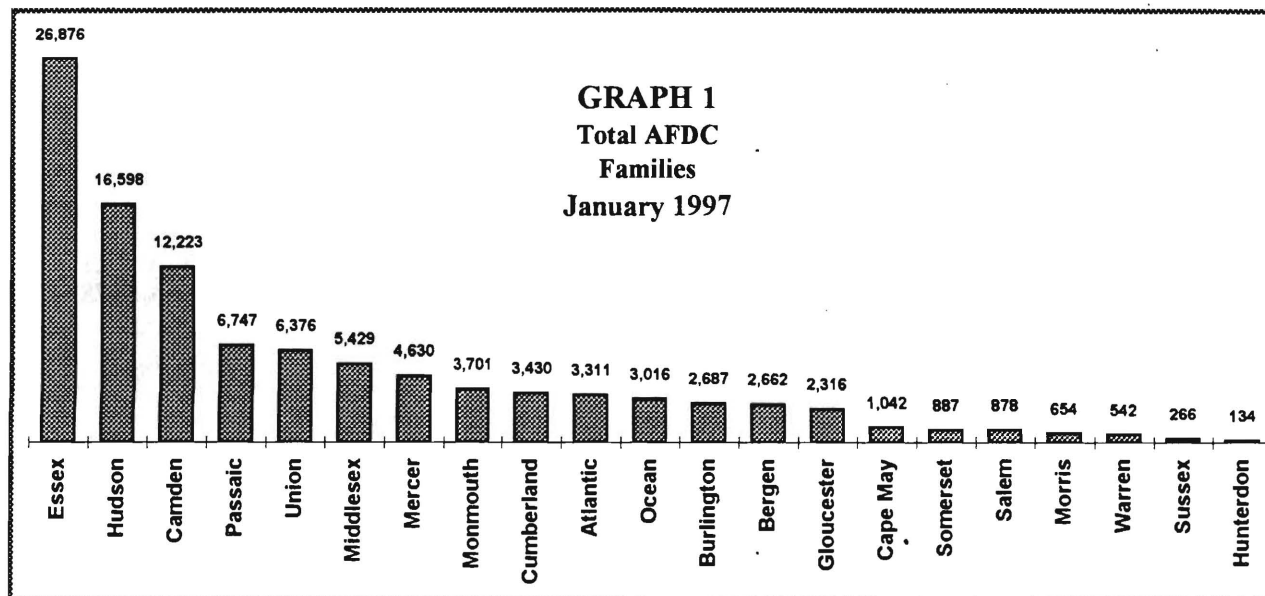
New Jersey Department of Human Services
Division of Family Development

Table 1
AFDC Program
NUMBER OF APPLICATIONS AND TERMINATIONS DURING REPORT MONTH, AND
NUMBER OF ELIGIBLE FAMILIES RECEIVING AFDC AT END OF REPORT MONTH

January 1997

County	Applications Approved	Terminations	Regular AFDC (C Segment)	Unemployed Parents(F)	State AFDC(N)	Medicaid Only	Total AFDC
Atlantic	301	238	3,060	69	53	129	3,311
Bergen	115	129	2,378	108	98	78	2,662
Burlington	243	231	2,325	64	76	222	2,687
Camden	784	818	10,780	379	351	713	12,223
Cape May	148	113	866	44	59	73	1,042
Cumberland	306	361	2,936	136	171	187	3,430
Essex	980	1,126	25,629	333	202	712	26,876
Gloucester	199	250	1,975	93	63	185	2,316
Hudson	499	732	14,913	241	546	898	16,598
Hunterdon	19	16	101	5	7	21	134
Mercer	461	524	4,115	78	103	334	4,630
Middlesex	395	471	4,530	195	223	481	5,429
Monmouth	244	308	3,446	59	133	63	3,701
Morris	46	73	597	16	12	29	654
Ocean	243	263	2,544	120	127	225	3,016
Passaic	336	421	6,283	188	216	60	6,747
Salem	81	86	777	10	29	62	878
Somerset	107	111	736	32	28	91	887
Sussex	35	34	209	8	2	47	266
Union	349	446	5,768	92	167	349	6,376
Warren	42	52	461	20	26	35	542
NJ TOTAL	5,933	6,803	94,429	2,290	2,692	4,994	104,405

Data is derived from NJ Division of Family Development's FAMIS report #FF-012



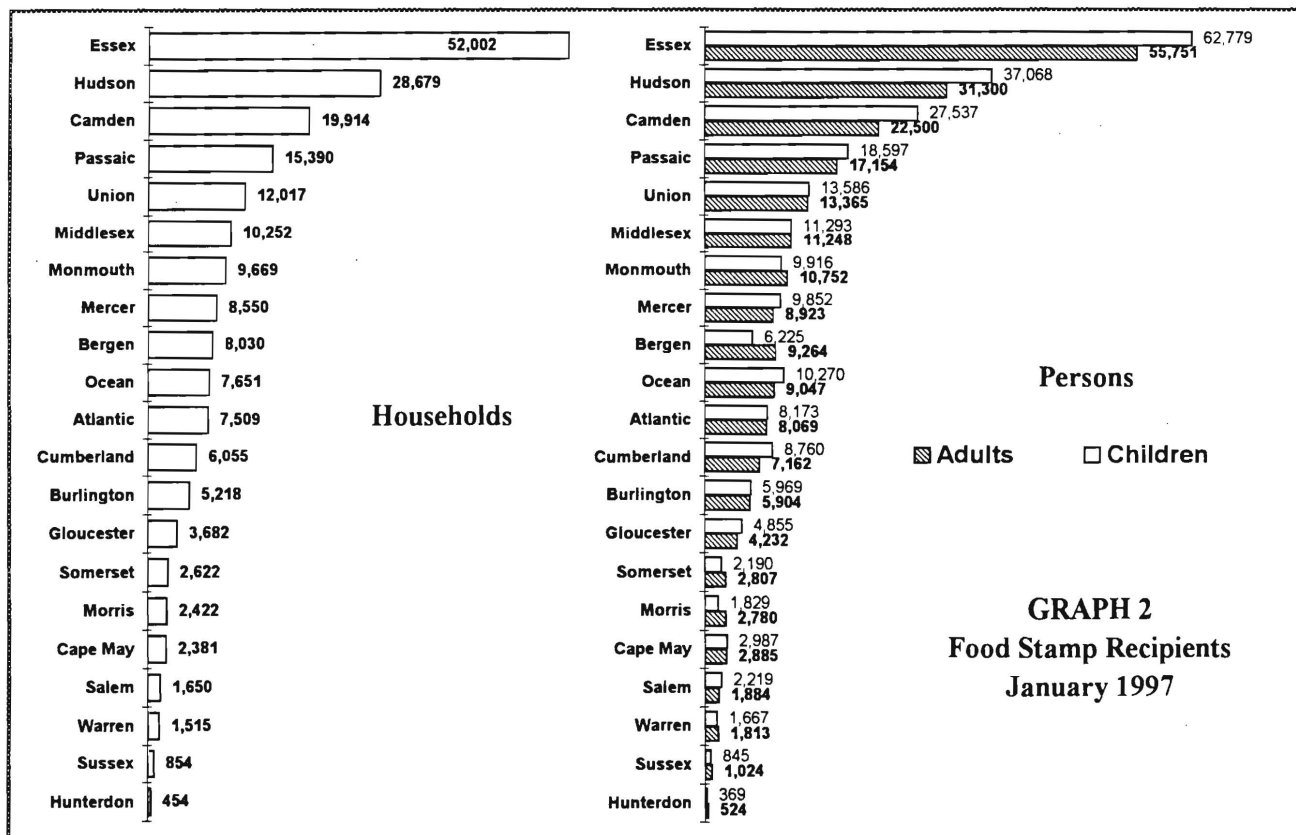
New Jersey Department of Human Services
Division of Family Development

Table 2
FOOD STAMP Program
NUMBER OF ATP'S ISSUED TO HOUSEHOLDS, PERSONS, ADULTS
AND CHILDREN AT THE END OF THE REPORT MONTH
January 1997

County	HOUSEHOLDS			PERSONS				
	AFDC	Other low income	TOTAL	TOTAL	AFDC	Other low income	Adults	Children
Atlantic	3,033	4,476	7,509	16,242	9,824	6,418	8,069	8,173
Bergen	2,374	5,656	8,030	15,489	7,053	8,436	9,264	6,225
Burlington	2,309	2,909	5,218	11,873	7,213	4,660	5,904	5,969
Camden	11,299	8,615	19,914	50,037	37,464	12,573	22,500	27,537
Cape May	1,078	1,303	2,381	5,872	3,666	2,206	2,885	2,987
Cumberland	3,376	2,679	6,055	15,922	11,559	4,363	7,162	8,760
Essex	26,067	25,935	52,002	118,530	81,496	37,034	55,751	62,779
Gloucester	2,034	1,648	3,682	9,087	6,425	2,662	4,232	4,855
Hudson	15,592	13,087	28,679	68,368	48,086	20,282	31,300	37,068
Hunterdon	126	328	454	893	385	508	524	369
Mercer	4,128	4,422	8,550	18,775	12,912	5,863	8,923	9,852
Middlesex	4,766	5,486	10,252	22,541	14,461	8,080	11,248	11,293
Monmouth	3,596	6,073	9,669	20,668	11,514	9,154	10,752	9,916
Morris	594	1,828	2,422	4,609	1,791	2,818	2,780	1,829
Ocean	3,116	4,535	7,651	19,317	10,477	8,840	9,047	10,270
Passaic	6,301	9,089	15,390	35,751	21,129	14,622	17,154	18,597
Salem	832	818	1,650	4,103	2,747	1,356	1,884	2,219
Somerset	810	1,812	2,622	4,997	2,419	2,578	2,807	2,190
Sussex	257	597	854	1,869	782	1,087	1,024	845
Union	5,333	6,684	12,017	26,951	17,223	9,728	13,365	13,586
Warren	534	981	1,515	3,480	1,716	1,764	1,813	1,667
NJ TOTAL	97,555	108,961	206,516	475,374	310,342	165,032	228,388	246,986

ATP - Authorization to Participate

Data is derived from NJ Division of Family Development's FAMIS report # FB-160.



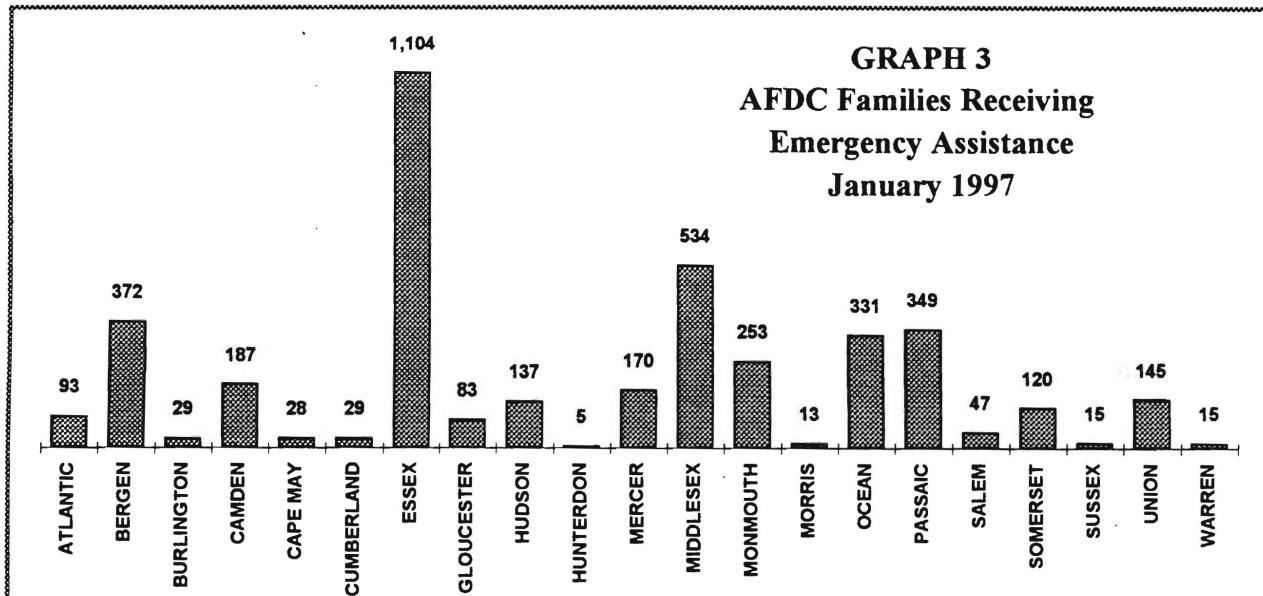
New Jersey Department of Human Services
Division of Family Development

Table 3
AFDC/SSI EMERGENCY ASSISTANCE
NUMBER OF ELIGIBLE FAMILIES RECEIVING EMERGENCY ASSISTANCE PAYMENTS
(UNDUPLICATED CASES)

January 1997

County	AFDC Families Receiving Emergency Assistance					SSI Recipients Receiving EA
	TOTAL AFDC-EA	Temporary Rental Assist.	Motel Housing	Emergency Shelter	Other AFDC-EA	
ATLANTIC	93	32	14	16	31	21
BERGEN	372	187	52	27	106	12
BURLINGTON	29	2	1	19	7	0
CAMDEN	187	75	2	17	93	15
CAPE MAY	28	9	6	2	11	5
CUMBERLAND	29	1	3	13	12	2
ESSEX	1,104	458	25	142	479	36
GLOUCESTER	83	38	5	19	21	6
HUDSON	137	16	5	27	89	8
HUNTERDON	5	0	0	2	3	0
MERCER	170	87	15	3	65	6
MIDDLESEX	534	294	21	21	198	35
MONMOUTH	253	116	22	3	112	4
MORRIS	13	0	0	6	7	7
OCEAN	331	106	91	0	134	70
PASSAIC	349	8	3	15	323	39
SALEM	47	7	12	0	28	4
SOMERSET	120	13	18	21	68	4
SUSSEX	15	0	3	4	8	0
UNION	145	13	3	22	107	14
WARREN	15	0	9	3	3	0
NJ TOTAL	4,059	1,462	310	382	1,905	288

Derived from NJ Division of Family Development FAMIS Reports #FM457 and #FM430-03A



New Jersey Department of Human Services
Division of Family Development

TABLE 4
FAMILY DEVELOPMENT PROGRAM
STATISTICAL SUMMARY

COUNTY	SNAPSHOT OF ACTIVITY AS OF JANUARY 1997				ACTIVITY FOR MONTH OF JANUARY 1997					
	TOTAL NONEXMT JOBS/FDP RECI- PIENTS	EMPLOYMENT DIRECTED ACTIVITIES(1)			PARTIC IN EDAs & RECEIVE SUPPORT SERVICES		PARTIC W/ 1st C M INTV	# EMPL THIS MONTH & STILL REC AFDC	# CLSD ON FAMIS RE: EARNINGS (2)	POST AFDC & REC CHILD CARE
		TRAIN- ING	EDUCA- TION	JOB SEARCH	TREs	CHILD CARE				
ATLANTIC	1,080	362	127	63	259	147	169	30	51	184
BERGEN	1,679	238	114	59	199	124	40	10	42	87
BURLINGTON	1,261	279	82	63	302	139	164	43	39	196
CAMDEN	8,300	697	418	83	570	531	589	54	124	251
CAPE MAY	547	93	25	45	60	19	81	1	26	14
CUMBERLAND	1,440	225	122	151	345	181	118	64	55	119
ESSEX	16,422	1,649	968	173	1,709	1,444	646	95	166	220
GLOUCESTER	1,009	188	48	40	230	77	56	20	16	64
HUDSON	10,501	1,349	924	254	1,841	1,004	234	56	146	298
HUNTERDON	74	15	16	3	4	1	3	2	6	16
MERCER	2,943	299	241	25	232	223	80	30	42	129
MIDDLESEX	2,802	367	255	268	348	188	250	78	88	184
MONMOUTH	2,377	289	209	144	377	312	70	39	66	209
MORRIS	299	235	33	65	36	76	55	12	17	61
OCEAN	1,664	171	98	105	34	74	191	28	42	151
PASSAIC	3,590	846	286	58	775	337	152	41	79	123
SALEM	342	86	83	13	108	61	21	4	12	49
SOMERSET	450	61	57	14	55	63	8	12	11	46
SUSSEX	136	25	23	29	25	28	19	3	9	34
UNION	3,655	331	209	183	403	198	34	19	60	136
WARREN	335	58	33	35	8	14	8	4	14	17
STATE	60,906	7,863	4,371	1,873	7,920	5,241	2,988	645	1,111	2,588

(1) - The number of participants receiving support services may occasionally exceed the number actively participating in EDAs. This can result from extended assessment or evaluation activities, or the issuance of bridge payments.

(2) - FAMIS file date: 1/18/97

New Jersey Department of Human Services
Division of Family Development

Table 5

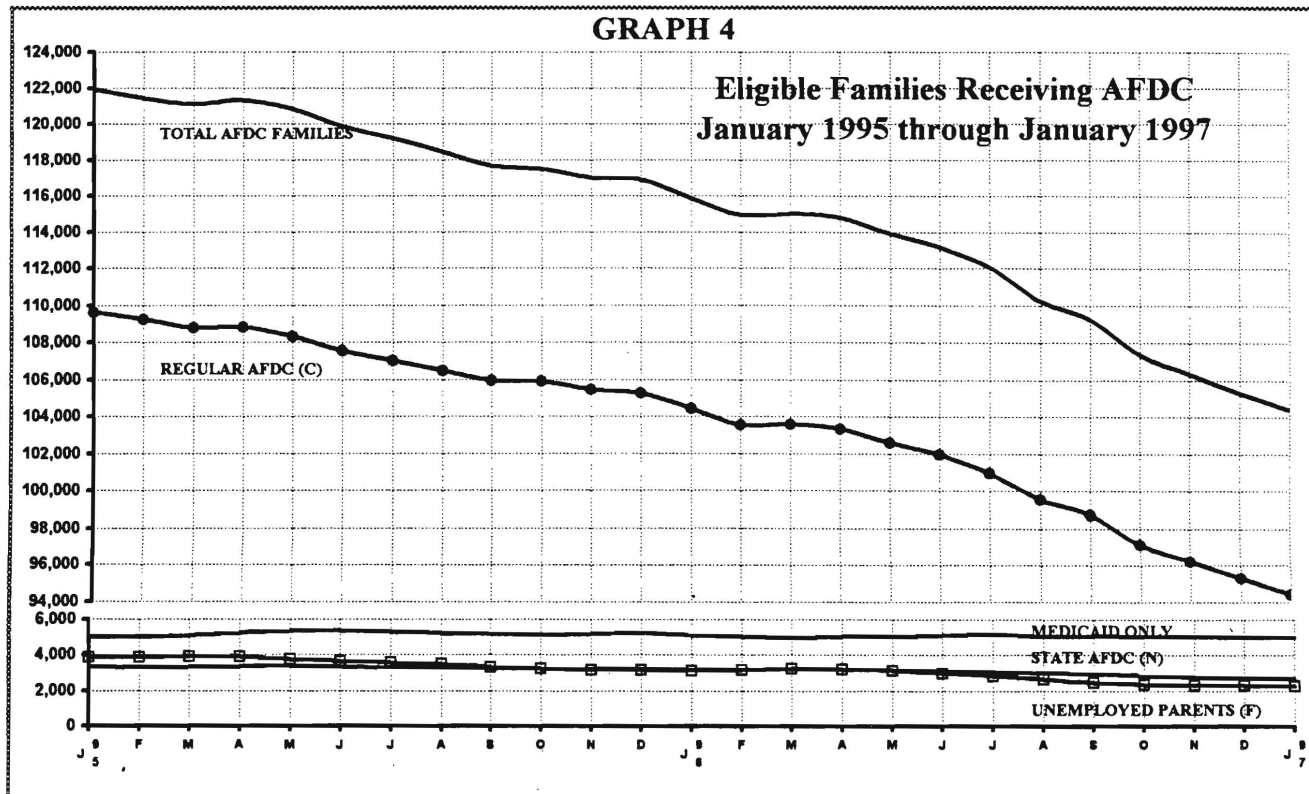
AFDC Program

**NUMBER OF APPLICATIONS AND TERMINATIONS DURING REPORT MONTH, AND
NUMBER OF ELIGIBLE FAMILIES RECEIVING AFDC AT END OF REPORT MONTH**

January 1995 through January 1997

	Applications Approved	Terminations	Regular AFDC (C Segment)	Unemployed Parents(F)	State AFDC(N)	Medicaid Only	Total AFDC
1995 Jan	5,583	5,944	109,645	3,875	3,358	5,045	121,923
Feb	5,964	6,515	109,261	3,878	3,270	5,016	121,425
Mar	5,810	6,221	108,800	3,903	3,305	5,088	121,096
Apr	7,096	7,086	108,822	3,907	3,365	5,209	121,303
May	5,288	5,784	108,343	3,773	3,369	5,328	120,813
Jun	5,558	6,458	107,541	3,639	3,336	5,358	119,874
Jul	5,977	6,781	107,028	3,574	3,286	5,293	119,181
Aug	5,547	6,294	106,475	3,489	3,260	5,239	118,463
Sep	5,922	6,647	105,943	3,303	3,260	5,175	117,681
Oct	7,062	7,359	105,917	3,224	3,257	5,110	117,508
Nov	6,083	6,660	105,445	3,164	3,199	5,189	116,997
Dec	5,582	5,775	105,287	3,165	3,189	5,258	116,899
Average	5,956	6,460	107,376	3,575	3,288	5,192	119,430
1996 Jan	5,332	6,236	104,430	3,139	3,173	5,113	115,855
Feb	5,217	6,283	103,561	3,161	3,170	5,060	114,952
Mar	6,317	6,302	103,598	3,230	3,217	4,956	115,001
Apr	6,896	7,241	103,352	3,192	3,211	5,040	114,795
May	5,335	6,152	102,600	3,112	3,163	5,038	113,913
Jun	5,319	6,121	101,947	2,999	3,117	5,116	113,179
Jul	5,874	7,027	100,968	2,843	3,073	5,200	112,084
Aug	5,014	6,789	99,567	2,638	2,993	5,053	110,251
Sep	6,311	7,440	98,744	2,462	2,933	5,097	109,236
Oct	5,213	7,015	97,152	2,368	2,822	5,026	107,368
Nov	5,374	6,549	96,238	2,329	2,752	5,034	106,353
Dec	5,018	6,137	95,322	2,308	2,708	4,992	105,330
Average	5,602	6,608	100,623	2,815	3,028	5,060	111,526
1997 Jan	5,933	6,803	94,429	2,290	2,692	4,994	104,405

Data is derived from NJ Division of Family Development's FAMIS report #FF-012



New Jersey Department of Human Services

Division of Family Development

TABLE 6

FOOD STAMP Program State Summary
NUMBER OF ATP'S ISSUED TO HOUSEHOLDS, PERSONS
ADULTS AND CHILDREN AT THE END OF THE REPORT MONTH
January 1995 through January 1997

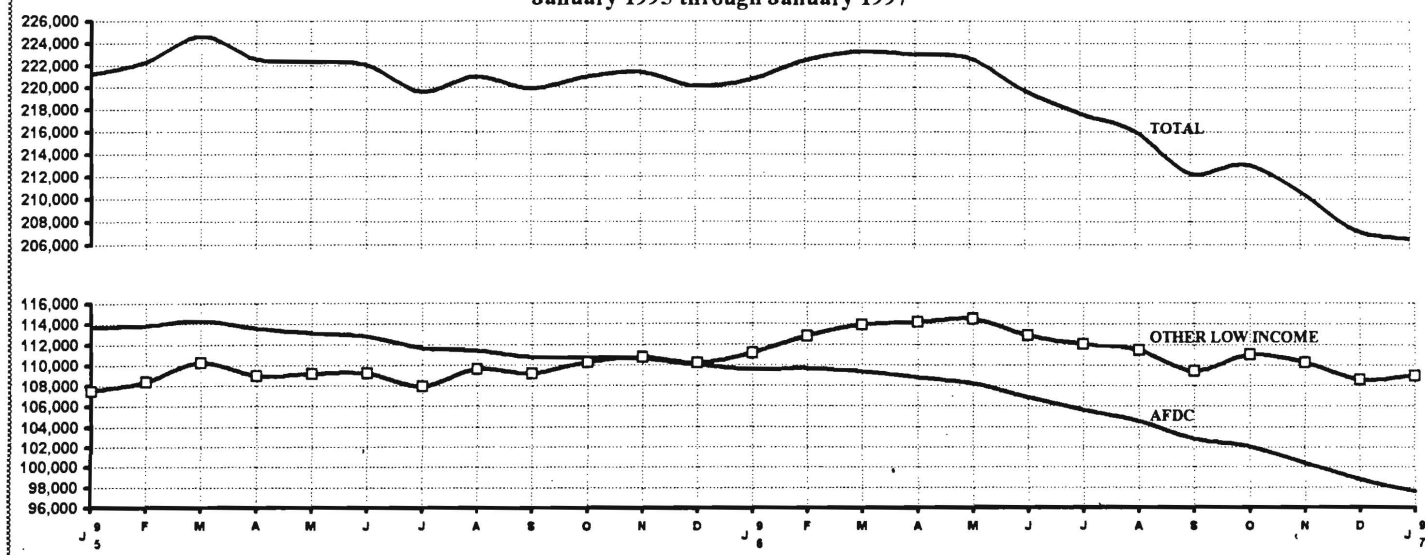
	<u>HOUSEHOLDS</u>			<u>PERSONS</u>				
	AFDC	Other low income	TOTAL	TOTAL	AFDC	Other low income	Adults	Children
1995 Jan	113,691	107,493	221,184	522,125	356,763	165,362	245,837	276,288
Feb	113,830	108,421	222,251	524,344	357,419	166,925	247,107	277,237
Mar	114,339	110,279	224,618	529,456	359,404	170,052	249,994	279,462
Apr	113,588	108,991	222,579	524,102	356,717	167,385	247,367	276,735
May	113,125	109,171	222,296	522,173	355,099	167,074	246,949	275,224
Jun	112,827	109,198	222,025	521,084	354,211	166,873	246,557	274,527
Jul	111,635	107,978	219,613	515,478	350,378	165,100	243,727	271,751
Aug	111,415	109,603	221,018	516,618	349,372	167,246	245,110	271,508
Sep	110,760	109,154	219,914	513,517	347,126	166,391	243,723	269,794
Oct	110,697	110,268	220,965	514,598	346,519	168,079	244,911	269,687
Nov	110,630	110,763	221,393	514,823	346,034	168,789	245,455	269,368
Dec	109,992	110,155	220,147	511,727	343,955	167,772	243,965	267,762
Average	112,211	109,290	221,500	519,170	351,916	167,254	245,892	273,279
1996 Jan	109,554	111,166	220,720	512,165	342,778	169,387	244,801	267,364
Feb	109,649	112,813	222,462	515,181	343,314	171,867	246,961	268,220
Mar	109,364	113,895	223,259	515,676	342,361	173,315	247,695	267,981
Apr	108,787	114,163	222,950	514,375	340,597	173,778	247,380	266,995
May	108,205	114,458	222,663	513,213	338,891	174,322	246,918	266,295
Jun	106,875	112,888	219,763	506,926	334,762	172,164	243,422	263,504
Jul	105,653	112,023	217,676	501,575	331,157	170,418	240,840	260,735
Aug	104,568	111,473	216,041	497,436	328,055	169,381	238,804	258,632
Sep	102,827	109,441	212,268	488,765	322,572	166,193	234,442	254,323
Oct	102,088	111,008	213,096	489,991	321,226	168,765	235,401	254,590
Nov	100,411	110,254	210,665	484,378	317,163	167,215	232,756	251,622
Dec	98,729	108,617	207,346	477,693	312,869	164,824	229,191	248,502
Average	105,559	111,850	217,409	501,448	331,312	170,136	240,718	260,730
1997 Jan	97,555	108,961	206,516	475,374	310,342	165,032	228,388	246,986

ATP - Authorization to Participate

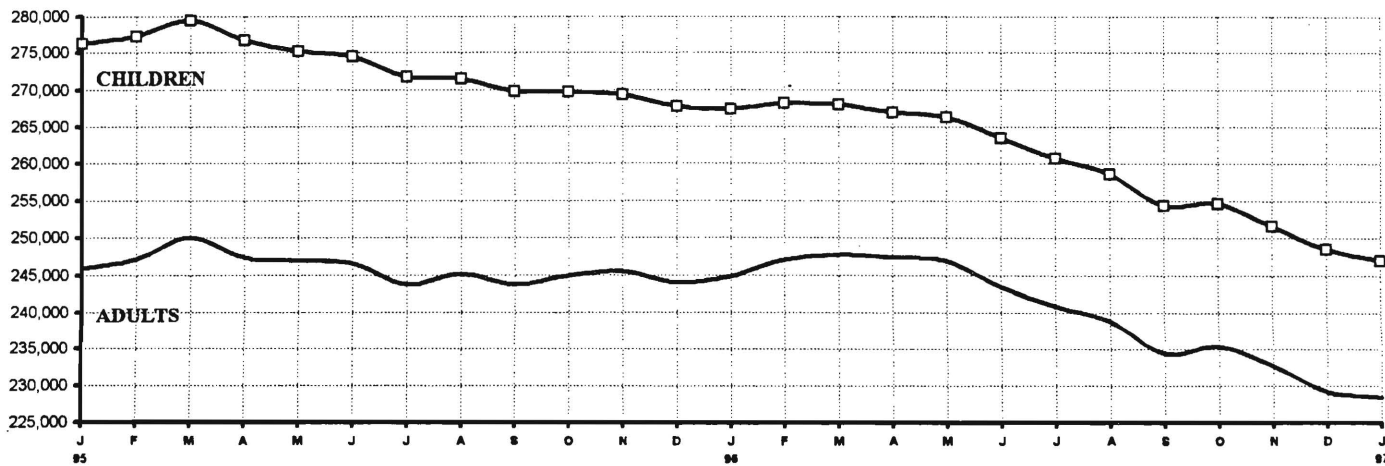
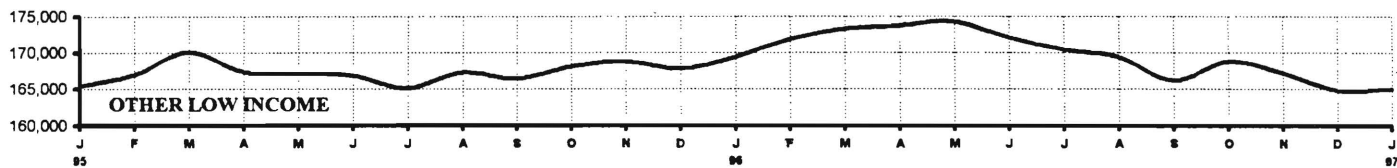
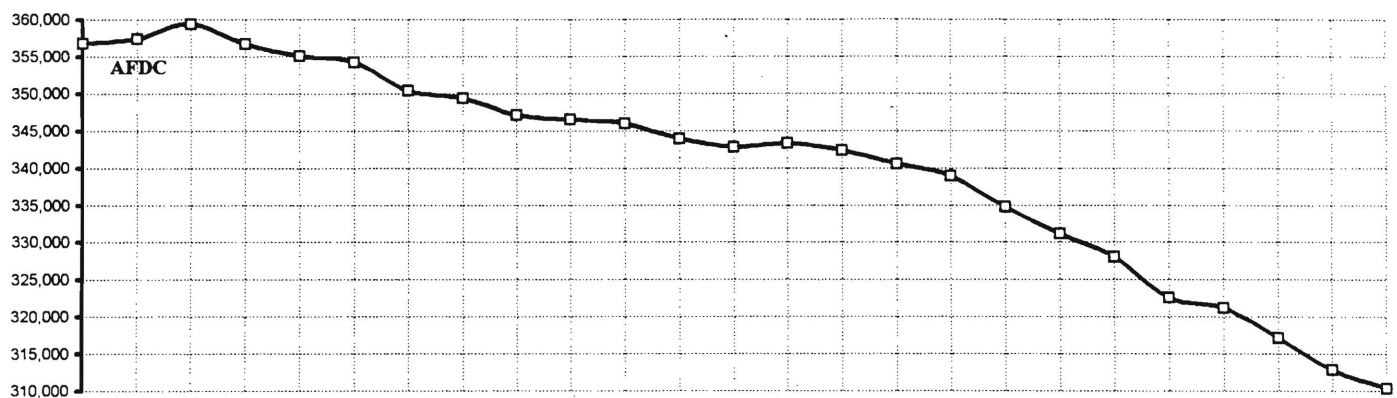
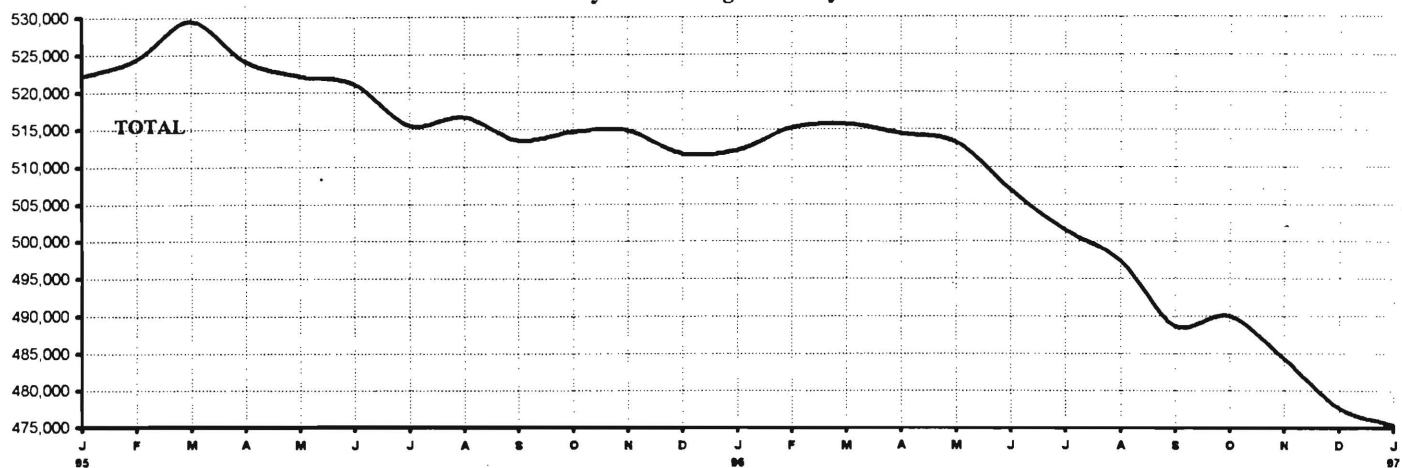
Data is derived from NJ Division of Family Development's FAMIS report # FB-160.

GRAPH 5

Food Stamp Households
January 1995 through January 1997



GRAPH 6
Food Stamp Recipients
January 1995 through January 1997



New Jersey Department of Human Services
Division of Family Development

TABLE 7

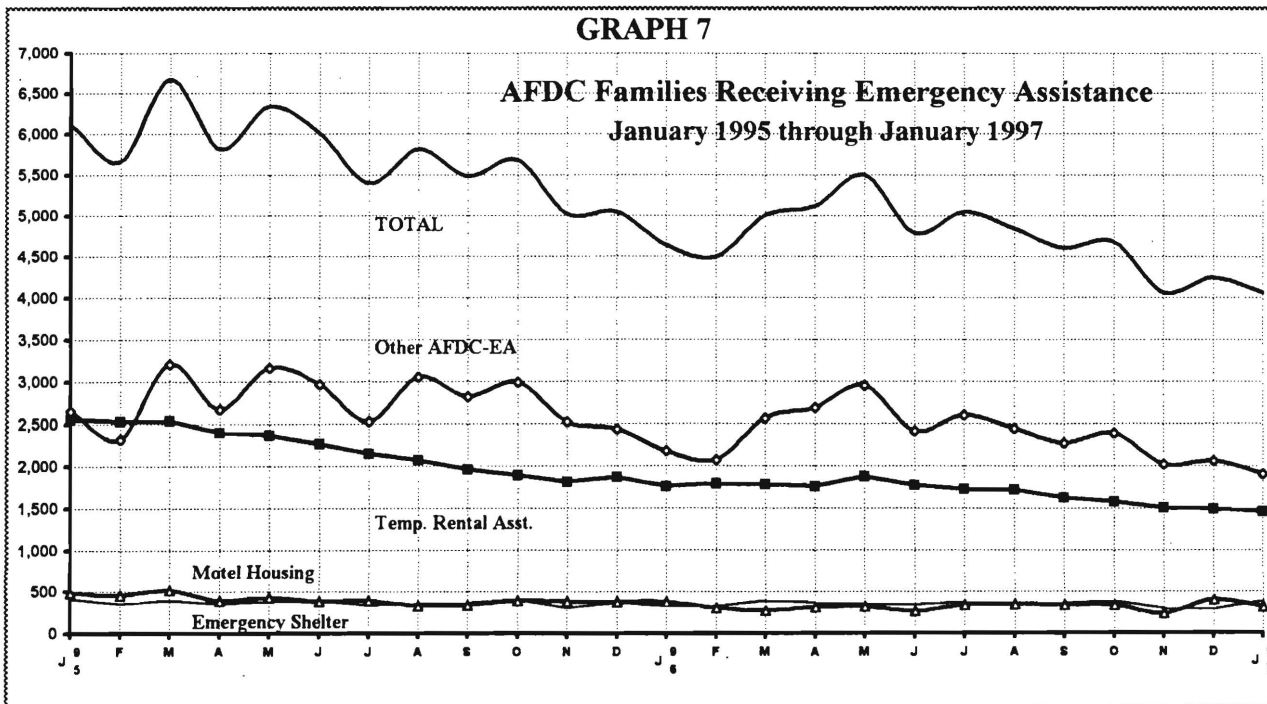
EMERGENCY ASSISTANCE Program for AFDC Recipients, State Summary
NUMBER OF ELIGIBLE FAMILIES RECEIVING EMERGENCY ASSISTANCE PAYMENTS
(UNDUPLICATED CASES)
January 1995 through January 1997

	Total families receiving EA	Temporary rental assistance	Motel Housing	Emergency Shelter	Other AFDC-EA
1995 JAN	6,115	2,557	487	413	2,658
FEB	5,664	2,535	456	354	2,319
MAR	6,668	2,542	516	402	3,208
APR	5,815	2,402	387	351	2,675
MAY	6,338	2,364	427	381	3,166
JUN	6,007	2,268	382	387	2,970
JUL	5,402	2,149	389	334	2,530
AUG	5,813	2,068	331	362	3,052
SEP	5,482	1,958	336	364	2,824
OCT	5,678	1,891	388	410	2,989
NOV	5,024	1,816	384	302	2,522
DEC	5,048	1,864	377	369	2,438
AVERAGE	5,755	2,201	405	369	2,779

1996 JAN	4,639	1,761	374	325	2,179
FEB	4,490	1,788	305	330	2,067
MAR	5,001	1,779	270	388	2,564
APR	5,118	1,760	309	364	2,685
MAY	5,498	1,873	323	350	2,952
JUN	4,791	1,772	266	341	2,412
JUL	5,044	1,729	335	377	2,603
AUG	4,845	1,716	346	339	2,444
SEP	4,600	1,625	337	362	2,276
OCT	4,683	1,576	334	385	2,388
NOV	4,059	1,507	237	294	2,021
DEC	4,244	1,492	400	286	2,066
AVERAGE	4,751	1,698	320	345	2,388

1997 JAN	4,059	1,462	310	382	1,905
----------	-------	-------	-----	-----	-------

Data derived from NJ Division of Family Development FAMIS Report #FM457 and #FM430-03a.

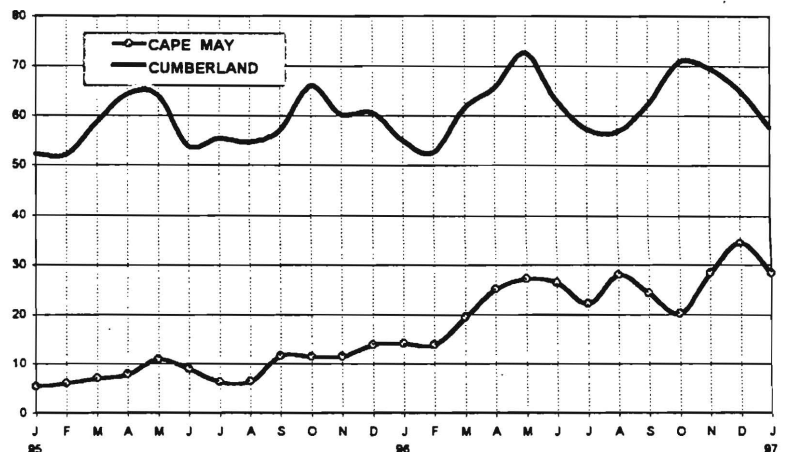
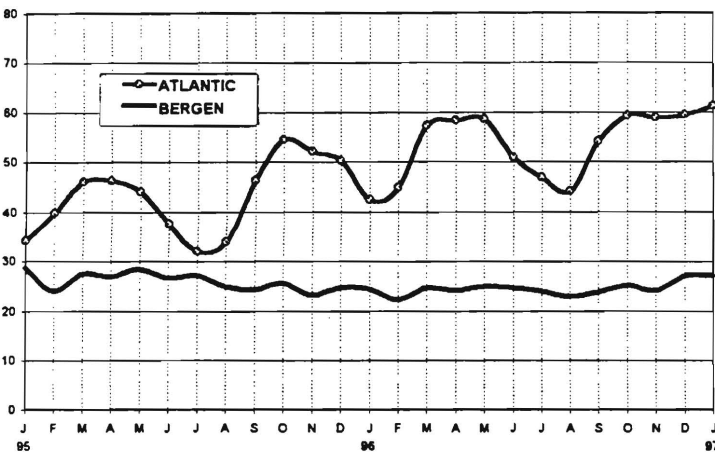
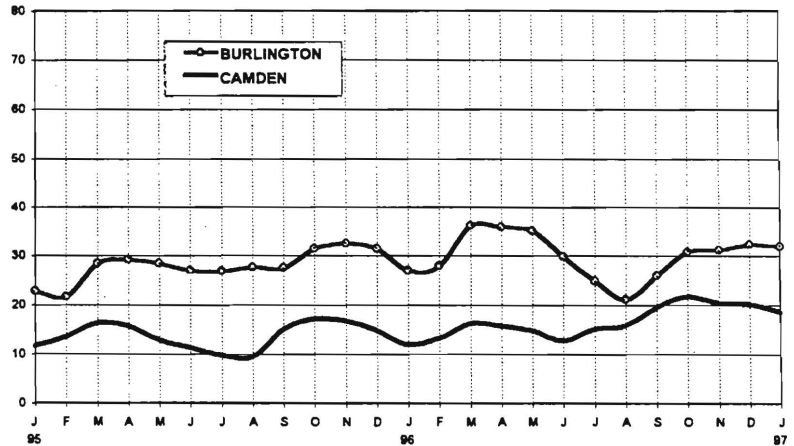
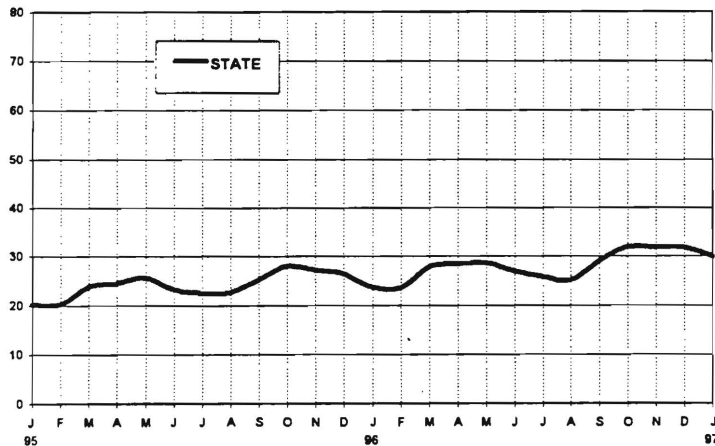
GRAPH 7

**New Jersey Department of Human Services
Division of Family Development**

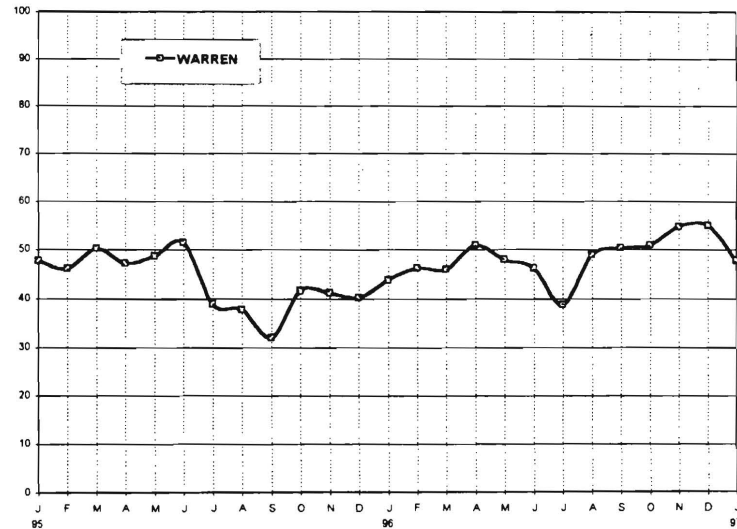
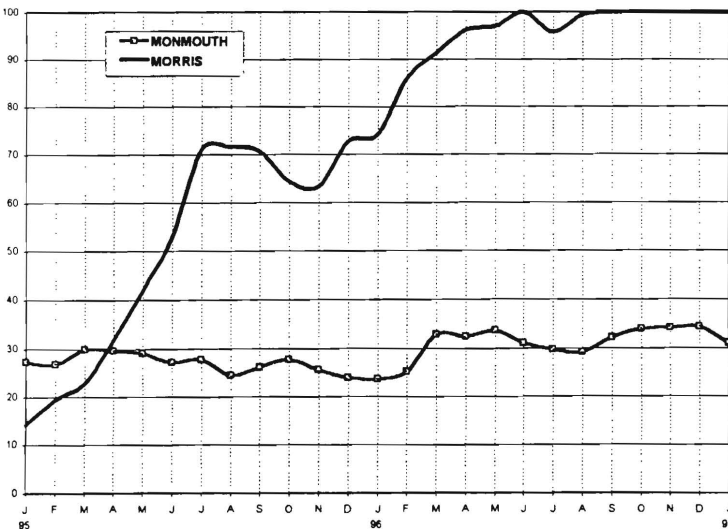
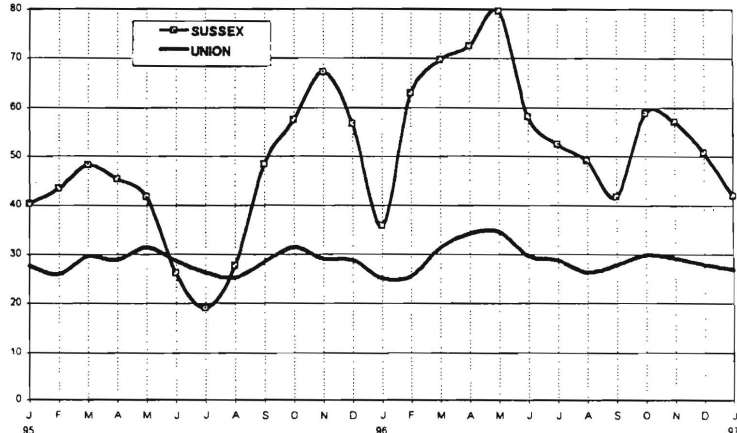
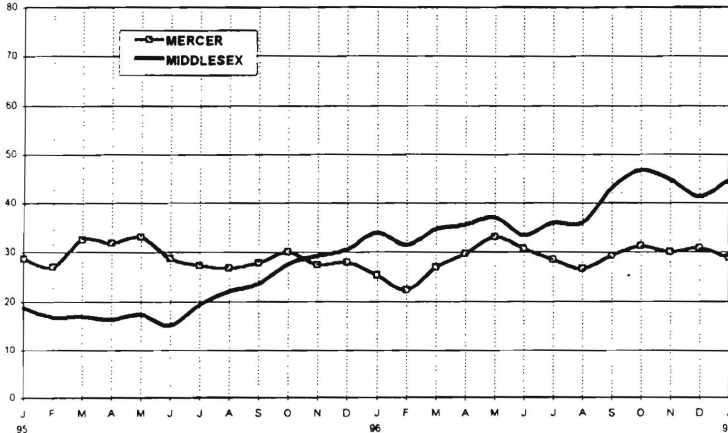
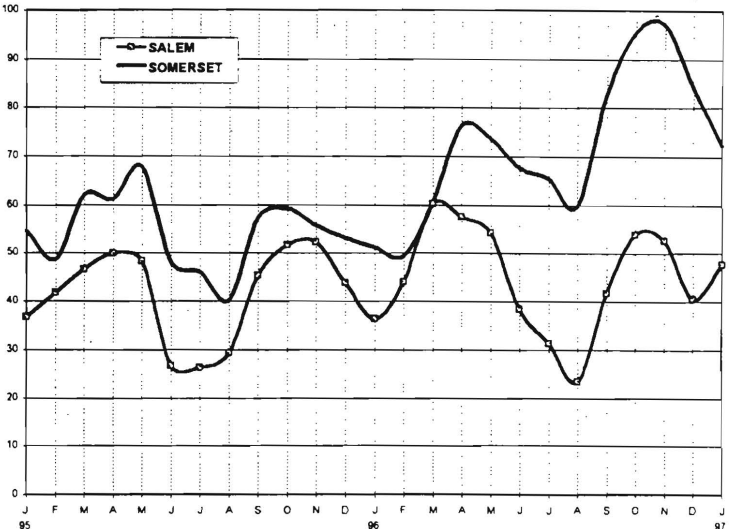
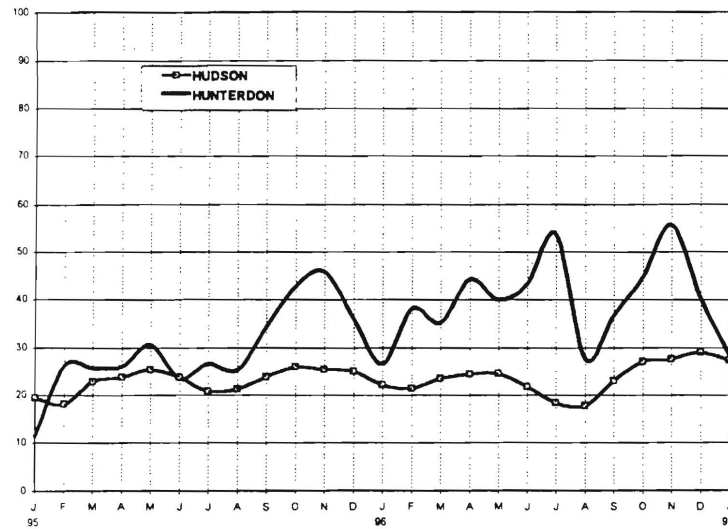
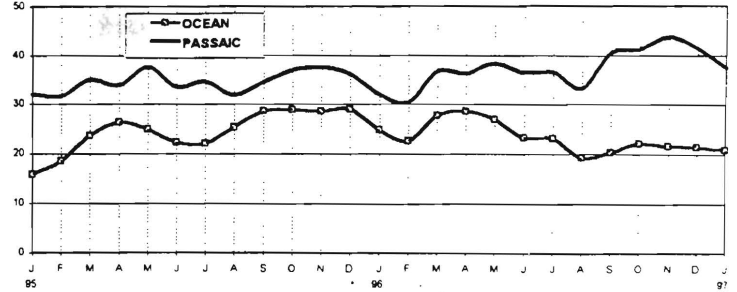
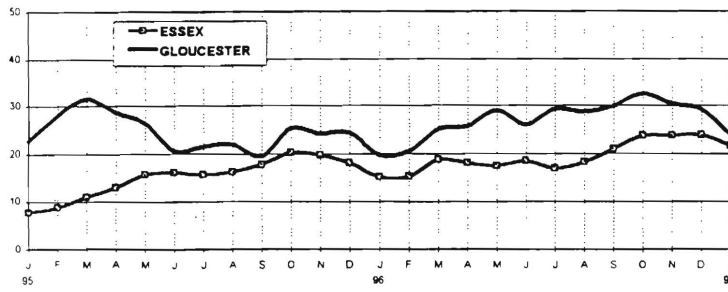
**TABLE 8
JOBS/FDP PARTICIPATION RATES BY MONTH
(PERCENT)**

	STATE	ATLANTIC	BERGEN	BURLINGTON	CAMDEN	CAPE MAY	CUMBERLAND	ESSEX	GLOUCESTER	HUDSON	HUNTERDON	MERCER	MIDDLESEX	MONMOUTH	MORRIS	OCEAN	PASSAIC	SALEM	SOMERSET	SUSSEX	UNION	WARREN
95 JAN	20.4	34.2	28.6	22.9	11.7	5.5	52.2	7.8	22.8	19.6	11.5	28.7	18.8	27.3	14.4	15.8	32.1	36.7	54.7	40.2	27.7	47.7
FEB	20.3	39.8	23.9	21.8	13.6	6.0	52.1	8.8	28.1	18.1	26.2	27.0	16.8	26.8	19.5	18.6	31.7	41.7	48.7	43.3	26.0	46.1
MAR	23.8	46.1	27.3	28.5	16.3	7.2	58.6	11.0	31.6	22.9	25.8	32.5	16.9	29.9	22.9	23.6	35.1	46.6	62.0	48.2	29.6	50.3
APR	24.5	46.3	26.9	29.2	15.7	7.9	64.1	13.0	28.7	23.8	26.1	31.9	16.3	29.6	31.9	26.4	33.9	50.0	61.3	45.3	28.9	47.2
MAY	25.7	44.0	28.3	28.6	12.9	10.9	64.0	15.7	26.4	25.4	30.6	33.1	17.4	29.1	42.0	25.0	37.7	48.4	68.0	41.7	31.4	48.7
JUN	23.3	37.7	26.5	27.1	11.3	9.0	53.8	16.0	20.7	23.8	23.5	28.7	15.1	27.2	52.9	22.3	33.6	26.7	48.1	26.1	28.6	51.5
JUL	22.5	31.9	27.0	26.9	9.8	6.3	55.3	15.8	21.5	20.8	26.6	27.3	19.2	27.7	71.0	22.1	34.7	26.3	46.1	19.0	26.3	38.9
AUG	22.6	33.9	24.8	27.7	9.5	6.5	54.6	16.2	22.0	21.2	25.2	26.7	22.0	24.5	71.7	25.4	32.0	29.4	40.3	27.7	25.2	37.8
SEP	25.2	46.4	24.2	27.6	15.1	11.7	56.9	17.7	19.5	23.8	34.3	27.8	23.6	26.2	70.7	28.6	34.5	45.3	57.3	48.4	28.4	32.0
OCT	27.9	54.6	25.5	31.5	17.1	11.4	65.9	20.2	25.3	26.0	42.7	30.1	27.5	27.8	64.4	28.9	37.0	51.7	59.3	57.5	31.4	41.7
NOV	27.2	52.2	23.1	32.5	16.8	11.5	60.2	19.7	24.1	25.4	45.8	27.4	29.3	25.6	63.3	28.6	37.6	52.4	55.8	67.2	29.0	41.3
DEC	26.4	50.3	24.5	31.5	14.8	13.9	60.6	18.1	24.4	25.0	35.9	28.0	30.6	23.9	72.6	28.9	36.2	43.9	53.2	56.7	28.8	40.3
96 JAN	23.7	42.5	24.3	27.1	12.0	14.1	55.1	15.2	19.7	22.2	26.7	25.3	34.0	23.6	74.1	24.8	32.1	36.3	51.3	35.8	25.2	43.8
FEB	23.5	44.9	22.2	27.9	13.3	13.9	52.6	15.3	20.5	21.5	38.0	22.3	31.5	25.1	85.9	22.6	30.4	43.9	49.4	62.9	25.5	46.3
MAR	27.8	57.3	24.5	36.2	16.2	19.4	61.5	18.7	25.1	23.5	35.2	26.9	34.6	32.8	91.4	27.6	36.8	60.2	60.6	69.6	31.3	45.9
APR	28.3	58.3	24.0	35.9	15.7	25.1	65.6	18.1	25.7	24.4	44.3	29.7	35.5	32.5	96.2	28.6	36.4	57.6	76.4	72.6	34.2	50.9
MAY	28.6	58.6	24.9	35.1	14.8	27.2	72.7	17.4	29.0	24.6	40.0	33.0	36.9	33.7	97.1	26.9	38.5	54.3	73.7	79.7	34.6	48.0
JUN	26.9	50.9	24.6	30.0	12.7	26.4	63.4	18.5	26.0	21.8	43.4	30.7	33.4	31.1	100.0	23.3	36.5	38.4	67.8	58.2	29.7	46.3
JUL	25.7	46.9	23.9	25.0	15.0	22.2	57.3	16.9	29.2	18.4	53.8	28.5	36.0	29.8	95.8	23.1	36.7	31.3	65.6	52.5	28.8	38.8
AUG	25.1	44.1	22.9	21.2	15.9	27.9	56.6	18.2	28.7	17.8	27.7	26.7	36.0	29.2	99.5	19.2	33.4	23.4	59.9	49.1	26.4	48.9
SEP	29.0	54.1	23.7	26.0	19.5	24.3	62.1	20.9	30.0	23.0	36.6	29.3	43.0	32.3	100.0	20.2	40.5	41.8	82.7	41.7	27.8	50.4
OCT	31.9	59.3	25.0	30.8	21.8	20.2	70.6	23.7	32.6	27.1	44.7	31.2	46.7	34.0	100.0	22.1	41.3	53.9	95.5	58.7	29.8	51.0
NOV	31.8	58.9	24.0	31.2	20.4	28.4	69.5	23.7	30.5	27.5	55.7	30.0	44.8	34.2	100.0	21.6	43.8	52.7	97.1	57.1	29.3	54.7
DEC	31.8	59.4	26.9	32.4	20.2	34.5	65.1	23.8	29.2	29.0	40.3	30.8	41.3	34.4	100.0	21.5	41.4	40.6	84.3	50.8	27.9	55.1
97 JAN	29.9	61.2	27.0	32.0	18.6	28.3	57.7	21.6	23.9	27.2	28.4	28.9	44.5	31.0	100.0	21.0	37.5	47.7	72.4	41.9	26.9	47.8

**GRAPH 8
JOBS/FDP PARTICIPATION RATES (%)**



GRAPH 8 (CONTINUED)
JOBS/FDP PARTICIPATION RATES (%)

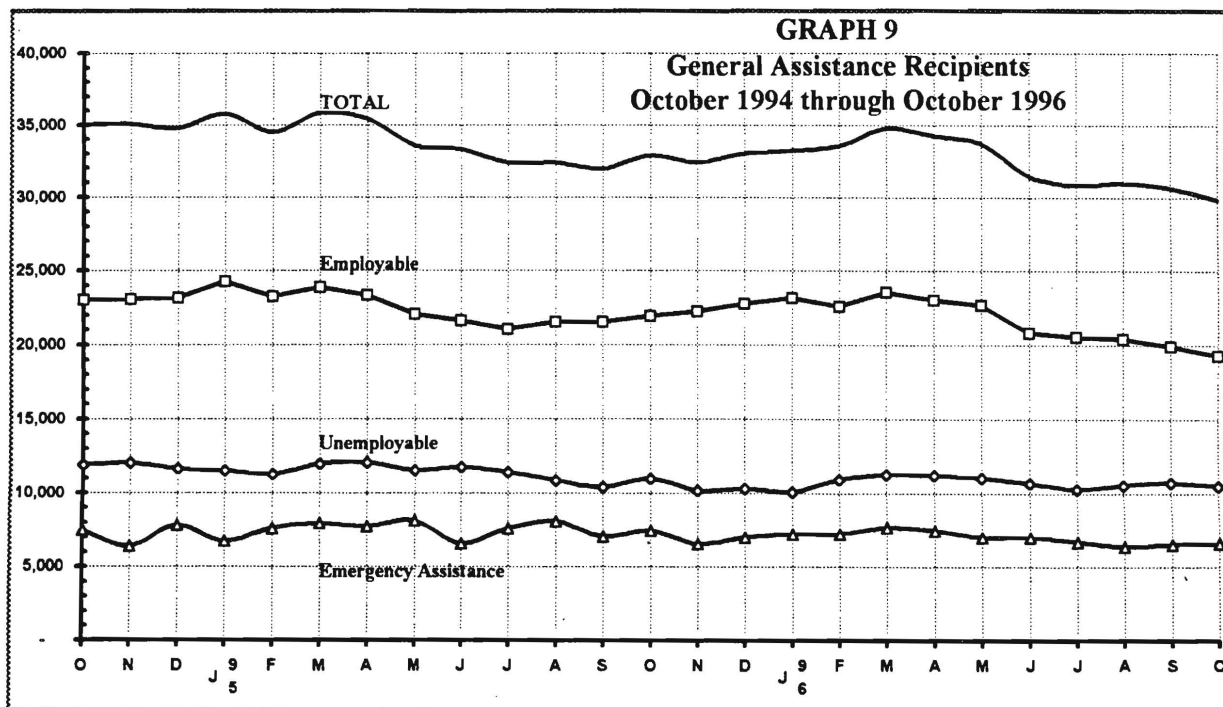


New Jersey Department of Human Services
Division of Family Development

TABLE 9
GENERAL ASSISTANCE Program, State Summary
NUMBER OF EMPLOYABLE AND UNEMPLOYABLE RECIPIENTS
AND EMERGENCY ASSISTANCE PAYMENTS DURING REPORT MONTH
October 1994 through October 1996

	All Persons Aided			Emergency Assistance Payments		
	Employable	Unemployable	Total	Temporary Rental Assist	Other GA-EA	Total
1994 Oct	23,031	11,950	34,981	4,472	3,032	7,504
Nov	23,046	12,045	35,091	4,607	1,762	6,369
Dec	23,142	11,642	34,784	4,657	3,137	7,794
AVERAGE (12 months)	24,374	11,813	36,187	4,651	3,181	7,832
1995 Jan	24,262	11,537	35,799	4,408	2,343	6,751
Feb	23,219	11,264	34,483	4,851	2,748	7,599
Mar	23,855	11,976	35,831	5,036	2,909	7,945
Apr	23,337	12,082	35,419	4,833	2,887	7,720
May	22,046	11,527	33,573	4,995	3,135	8,130
Jun	21,575	11,738	33,313	4,423	2,146	6,569
Jul	21,000	11,391	32,391	4,048	3,526	7,574
Aug	21,526	10,829	32,355	4,174	3,909	8,083
Sep	21,525	10,389	31,914	4,110	2,945	7,055
Oct	21,913	10,959	32,872	3,939	3,497	7,436
Nov	22,206	10,171	32,377	4,141	2,422	6,563
Dec	22,732	10,268	33,000	4,086	2,902	6,988
AVERAGE	22,433	11,178	33,611	4,420	2,947	7,368
1996 Jan	23,140	10,054	33,194	4,421	2,803	7,224
Feb	22,584	10,927	33,511	4,567	2,651	7,218
Mar	23,528	11,243	34,771	4,472	3,185	7,657
Apr	23,028	11,221	34,249	4,490	2,944	7,434
May	22,657	11,054	33,711	4,064	2,947	7,011
Jun	20,785	10,667	31,452	4,283	2,716	6,999
Jul	20,546	10,282	30,828	3,754	2,922	6,676
Aug	20,416	10,552	30,968	3,958	2,448	6,406
Sep	19,895	10,741	30,636	3,905	2,597	6,502
Oct	19,310	10,514	29,824	3,894	2,728	6,622
AVERAGE	21,589	10,726	32,314	4,181	2,794	6,975

Data Sources: NJ Division of Family Development, GA Fiscal Unit



New Jersey Department of Human Services
Division of Family Development

TABLE 10
CHILD SUPPORT AND PATERNITY COLLECTIONS
State Summary

COLLECTION SOURCE	Most Recent Six Months		
	7/95-12/95	7/96-12/96	% change
AFDC & FOSTER CARE			
Federal Tax	\$1,930,941	\$1,939,997	0.5%
State Tax	1,074,699	1,552,196	44.4%
Unempl. Ins. Ben.	2,407,058	2,847,770	18.3%
Income Withholding	22,561,593	20,357,010	-9.8%
Other/Own Behalf	8,010,601	8,783,873	9.7%
From Other States	1,625,253	1,762,584	8.4%
For Other States	3,640,296	4,192,349	15.2%
TOTAL COLLECTION	\$41,250,441	\$41,435,779	0.4%
TOTAL DISTRIBUTION	\$45,825,365	\$44,279,957	-3.4%
NON- AFDC			
Federal Tax	\$1,255,442	\$1,182,613	-5.8%
State Tax	1,356,348	2,052,019	51.3%
Unempl. Ins. Ben.	7,799,188	9,798,210	25.6%
Income Withholding	128,399,101	132,956,810	3.5%
Other/Own Behalf	67,859,423	67,239,814	-0.9%
From Other States	9,854,534	10,854,160	10.1%
For Other States	13,900,599	15,067,775	8.4%
TOTAL COLLECTION	\$230,424,635	\$239,151,401	3.8%
TOTAL DISTRIBUTION	\$204,557,195	\$233,912,980	14.4%
TOTAL			
Federal Tax	\$3,186,383	\$3,122,610	-2.0%
State Tax	2,431,047	3,604,215	48.3%
Unempl. Ins. Ben.	10,206,246	12,645,980	23.9%
Income Withholding	150,960,694	153,313,820	1.6%
Other/Own Behalf	75,870,024	76,023,687	0.2%
From Other States	11,479,787	12,616,744	9.9%
For Other States	17,540,895	19,260,124	9.8%
TOTAL COLLECTION	\$271,675,076	\$280,587,180	3.3%
TOTAL DISTRIBUTION	\$250,382,560	\$278,192,937	11.1%

Distributed amount represents collections reported and recognized by the Federal Office of Child Support Enforcement for calculating incentives and annual report to Congress

Source: DFD Office of Child Support and Paternity Programs

Explanatory Notes

The Department of Human Services Division of Family Development provides basic income and an opportunity to achieve self-sufficiency for individuals and families served by the Division's programs. The Division provides leadership, direction and supervision to those public agencies responsible for administering those programs and plans for and develops policies to promote self-sufficiency.

AID TO FAMILIES WITH DEPENDENT CHILDREN (AFDC) - Financial assistance for dependent children and their natural or adoptive parents, or certain other relatives recognized as taking the place of a parent.

Regular AFDC (C Segment) - assistance when only one parent is in the home due to death or absence, or both parents are in the home but at least one is incapacitated.

Unemployed Parents (F Segment) - assistance when both parents are in the home, neither is incapacitated and the primary wage earner meets the federally defined criteria for unemployment.

State AFDC (N Segment) - assistance when both parents are in the home, neither is incapacitated, and the primary wage earner does not meet the federal definition of unemployment.

Medicaid Only - families no longer receiving AFDC financial assistance but remaining eligible for Medicaid under applicable provisions which extend coverage beyond period of AFDC assistance.

FOOD STAMP PROGRAM (FS) - Authorized by Congress as a nutritional supplement program to provide low income households with more food of greater variety and better nutrition. Program eligibility is based on household income, resources, and expenses for medical, shelter, and dependent care. CWA staff refer certain recipients to the New Jersey Department of Labor for participation in the Food Stamp Employment and Training Program.

EMERGENCY ASSISTANCE (EA) - Payments to those eligible for AFDC, Supplemental Security Income or General Assistance, authorized during the 30 consecutive days immediately following the emergency (defined as a substantial loss of shelter, food, clothing, or household furnishings by fire, flood or other similar disaster) or if the eligible individual or family is in an imminent or actual state of homelessness.

JOBS/FDP

JOB OPPORTUNITY AND BASIC SKILLS PROGRAM (JOBS) - Federally mandated work/training program for recipients of AFDC established by the Family Support Act of 1988 under Part F of Title IV of the Social Security Act.

FAMILY DEVELOPMENT PROGRAM (FDP) - Reform legislation enacted by the State Legislature in January 1992 to: build, strengthen, and support the family unit; encourage family formation; reduce the long-term aspects of welfare dependency; look to the needs of the family unit as a whole; emphasize education and training for all family members; maximize use of educational, training and employment resources; and develop genuine private sector job opportunities.

SNAPSHOT OF ACTIVITY AT POINT IN TIME - Status of activities as of the end of the month:

Total Non-Exempt JOBS/FDP Recipients - Calculation of the number of mandatory IV-F individuals (FAMIS report # FB304).

Employment Directed Activities (EDA) - From Activities Summary Report (OMEGA report # RM064). Unduplicated count of persons participating in **Training, Education, or Job Search**.

Participants in EDA, Receiving Support Services - From Issuance Disbursement Summary (OMEGA report # RM703). Total number of active participants who show receipt of **Training Related Expenses or Child Care**.

Participation Rate (JOBS/FDP) - Federally mandated calculation method, dividing the number of participants whose combined and averaged weekly hours of participation in qualifying activities equals or exceeds 20 hours per week by the total number of non-exempt IV-F recipients. As of the end of the month.

ACTIVITY FOR THE MONTH - Number of participants with the indicated activity during the month:

Participants with First Case Management Interview - From Activities Summary Report (OMEGA report # RM064).

Number of Persons Employed This Month, Still Receiving AFDC - From Activities Summary Report (OMEGA report # RM064).

Number of Persons Closed on FAMIS Due to Earnings - From FAMIS report # FM463.

Post AFDC and Receiving Child Care - Persons no longer in receipt of AFDC, but still receiving child care. From Issuance Disbursement Summary (OMEGA report # RM703).

CURRENT PROGRAM STATISTICS

ANNUAL SUPPLEMENT

A. AFDC PROGRAM

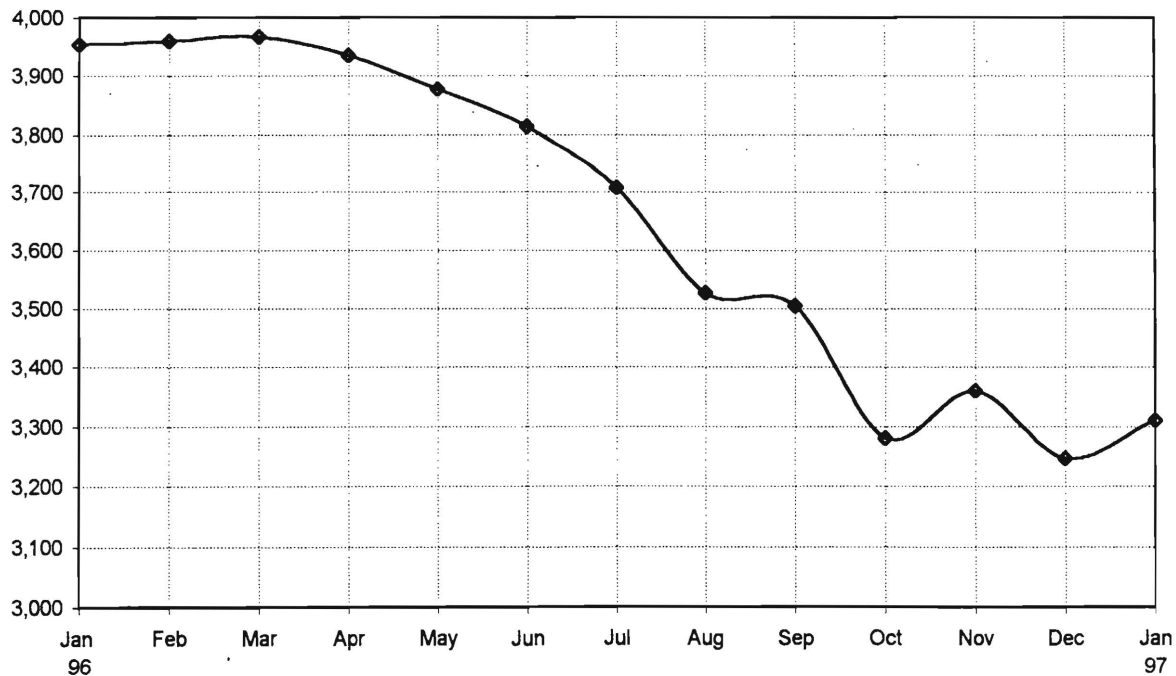
COUNTY SUMMARIES

JANUARY 1996 - JANUARY 1997

AFDC Program County Historical Series
Atlantic County
NUMBER OF APPLICATIONS AND TERMINATIONS DURING REPORT MONTH AND
NUMBER OF ELIGIBLE FAMILIES RECEIVING AFDC AT END OF REPORT MONTH

	Applications Approved	Terminations	Regular AFDC (C Segment)	Unemployed Parents(F)	State AFDC(N)	Medicaid Only	Total AFDC
96 Jan	305	373	3,622	124	69	139	3,954
Feb	309	306	3,613	132	74	141	3,960
Mar	298	272	3,607	144	80	136	3,967
Apr	310	377	3,594	129	78	134	3,935
May	236	279	3,550	125	71	132	3,878
Jun	273	325	3,487	119	71	137	3,814
Jul	267	369	3,400	100	71	137	3,708
Aug	209	386	3,253	92	64	118	3,527
Sep	238	309	3,242	86	65	113	3,506
Oct	165	388	3,037	73	54	117	3,281
Nov	246	177	3,108	74	51	127	3,360
Dec	208	324	2,997	76	52	122	3,247
97 Jan	301	238	3,060	69	53	129	3,311

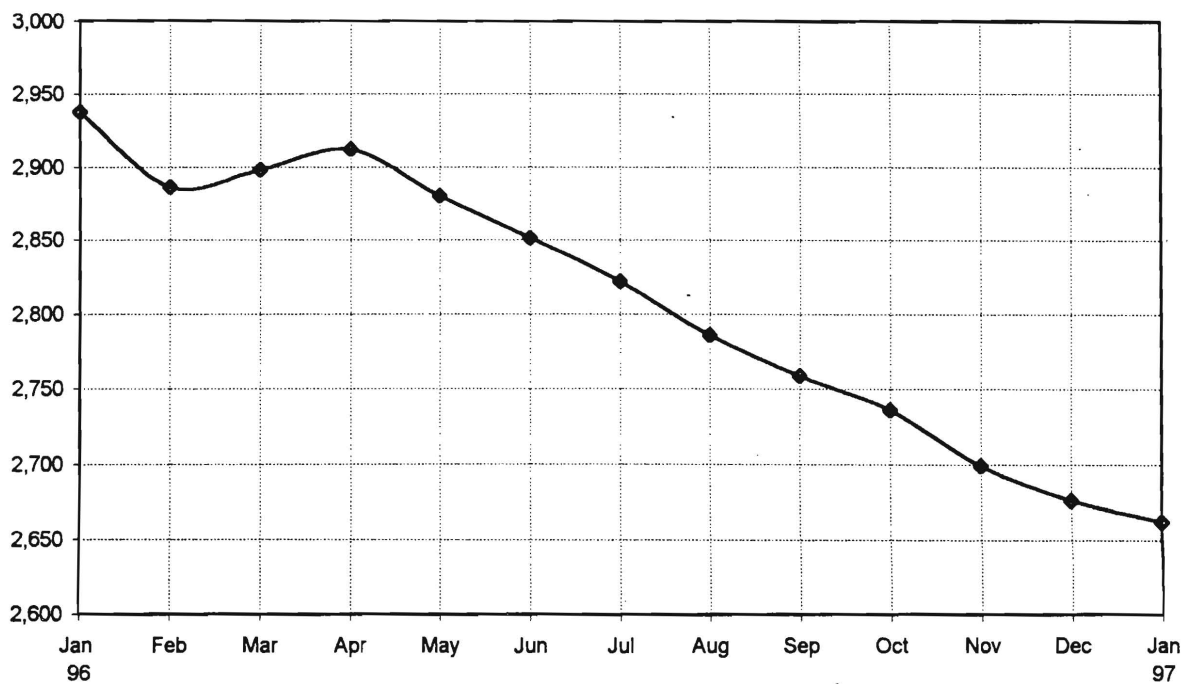
Atlantic County
TOTAL FAMILIES RECEIVING AFDC AT END OF REPORT MONTH



AFDC Program County Historical Series
Bergen County
NUMBER OF APPLICATIONS AND TERMINATIONS DURING REPORT MONTH AND
NUMBER OF ELIGIBLE FAMILIES RECEIVING AFDC AT END OF REPORT MONTH

	Applications Approved	Terminations	Regular AFDC (C Segment)	Unemployed Parents(F)	State AFDC(N)	Medicaid Only	Total AFDC
96 Jan	112	135	2,588	131	121	98	2,938
Feb	129	193	2,537	142	123	84	2,886
Mar	152	142	2,556	137	128	77	2,898
Apr	176	159	2,573	132	127	80	2,912
May	124	153	2,553	127	123	77	2,880
Jun	117	150	2,529	127	113	82	2,851
Jul	128	169	2,507	120	116	79	2,822
Aug	116	155	2,478	118	119	71	2,786
Sep	151	185	2,464	107	114	74	2,759
Oct	111	136	2,446	106	113	71	2,736
Nov	101	137	2,414	105	110	70	2,699
Dec	96	135	2,394	108	101	73	2,676
97 Jan	115	129	2,378	108	98	78	2,662

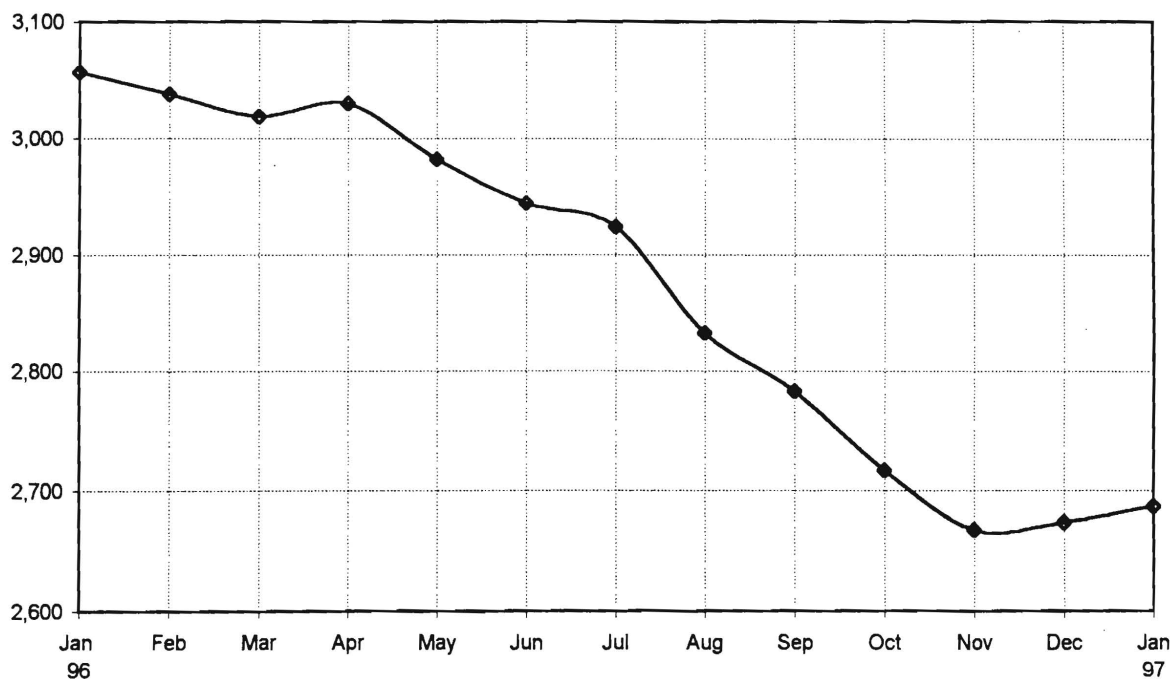
Bergen County
TOTAL FAMILIES RECEIVING AFDC AT END OF REPORT MONTH



AFDC Program County Historical Series
Burlington County
NUMBER OF APPLICATIONS AND TERMINATIONS DURING REPORT MONTH AND
NUMBER OF ELIGIBLE FAMILIES RECEIVING AFDC AT END OF REPORT MONTH

	Applications Approved	Terminations	Regular AFDC (C Segment)	Unemployed Parents(F)	State AFDC(N)	Medicaid Only	Total AFDC
96 Jan	205	211	2,683	83	80	211	3,057
Feb	214	234	2,642	84	85	227	3,038
Mar	252	265	2,628	89	77	225	3,019
Apr	315	308	2,617	94	86	233	3,030
May	186	228	2,579	88	89	226	2,982
Jun	240	271	2,554	83	82	225	2,944
Jul	242	247	2,547	65	80	232	2,924
Aug	187	270	2,489	62	69	213	2,833
Sep	255	306	2,440	61	66	216	2,783
Oct	202	267	2,370	66	72	209	2,717
Nov	224	278	2,328	62	71	207	2,668
Dec	229	221	2,324	69	72	209	2,674
97 Jan	243	231	2,325	64	76	222	2,687

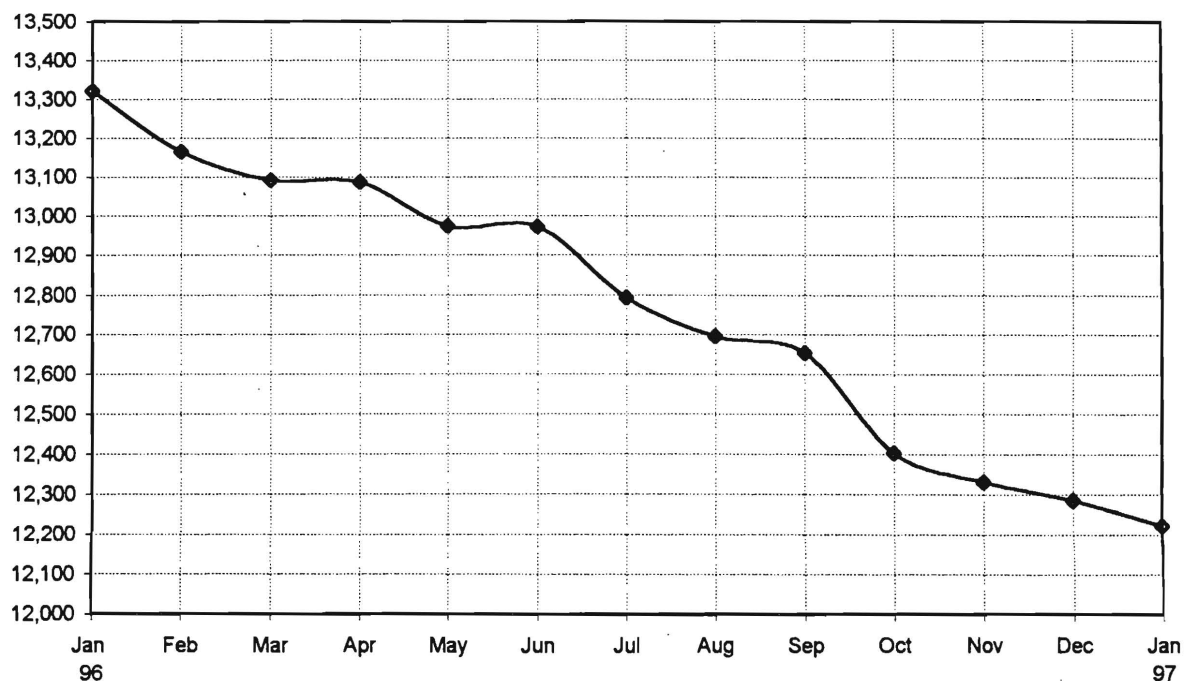
Burlington County
TOTAL FAMILIES RECEIVING AFDC AT END OF REPORT MONTH



AFDC Program County Historical Series
Camden County
NUMBER OF APPLICATIONS AND TERMINATIONS DURING REPORT MONTH AND
NUMBER OF ELIGIBLE FAMILIES RECEIVING AFDC AT END OF REPORT MONTH

	Applications Approved	Terminations	Regular AFDC (C Segment)	Unemployed Parents(F)	State AFDC(N)	Medicaid Only	Total AFDC
96 Jan	658	735	11,640	551	378	752	13,321
Feb	627	794	11,516	541	373	736	13,166
Mar	837	919	11,480	547	370	694	13,091
Apr	966	951	11,458	539	376	713	13,086
May	720	829	11,350	537	374	713	12,974
Jun	669	687	11,358	515	379	720	12,972
Jul	685	841	11,178	499	388	727	12,792
Aug	644	734	11,185	448	382	681	12,696
Sep	847	882	11,174	412	385	683	12,654
Oct	683	872	10,963	397	368	675	12,403
Nov	728	843	10,877	388	369	698	12,332
Dec	664	718	10,834	377	359	715	12,285
97 Jan	784	818	10,780	379	351	713	12,223

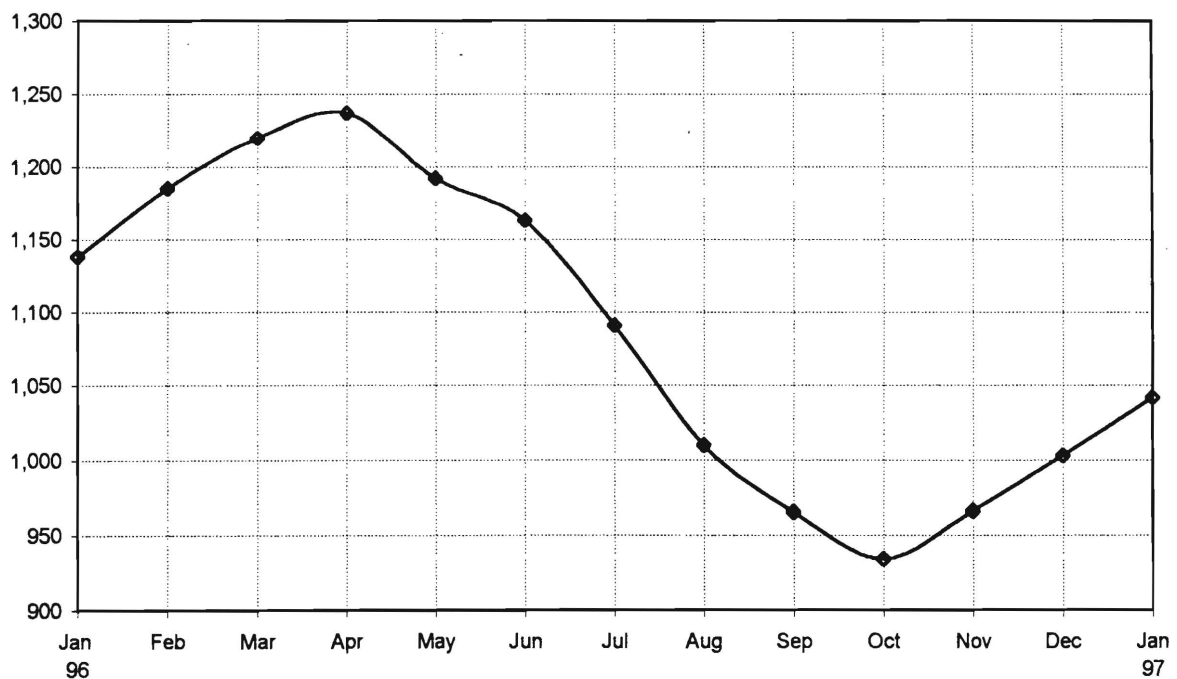
Camden County
TOTAL FAMILIES RECEIVING AFDC AT END OF REPORT MONTH



AFDC Program County Historical Series
Cape May County
NUMBER OF APPLICATIONS AND TERMINATIONS DURING REPORT MONTH AND
NUMBER OF ELIGIBLE FAMILIES RECEIVING AFDC AT END OF REPORT MONTH

	Applications Approved	Terminations	Regular AFDC (C Segment)	Unemployed Parents(F)	State AFDC(N)	Medicaid Only	Total AFDC
96 Jan	124	100	927	72	76	63	1,138
Feb	117	91	954	78	77	76	1,185
Mar	117	91	986	80	82	72	1,220
Apr	118	89	990	84	84	79	1,237
May	75	65	975	68	75	74	1,192
Jun	71	119	945	62	83	73	1,163
Jul	84	136	898	48	69	76	1,091
Aug	53	128	838	31	62	79	1,010
Sep	79	139	812	27	62	64	965
Oct	82	125	799	31	51	53	934
Nov	111	106	829	32	55	50	966
Dec	120	101	853	41	55	54	1,003
97 Jan	148	113	866	44	59	73	1,042

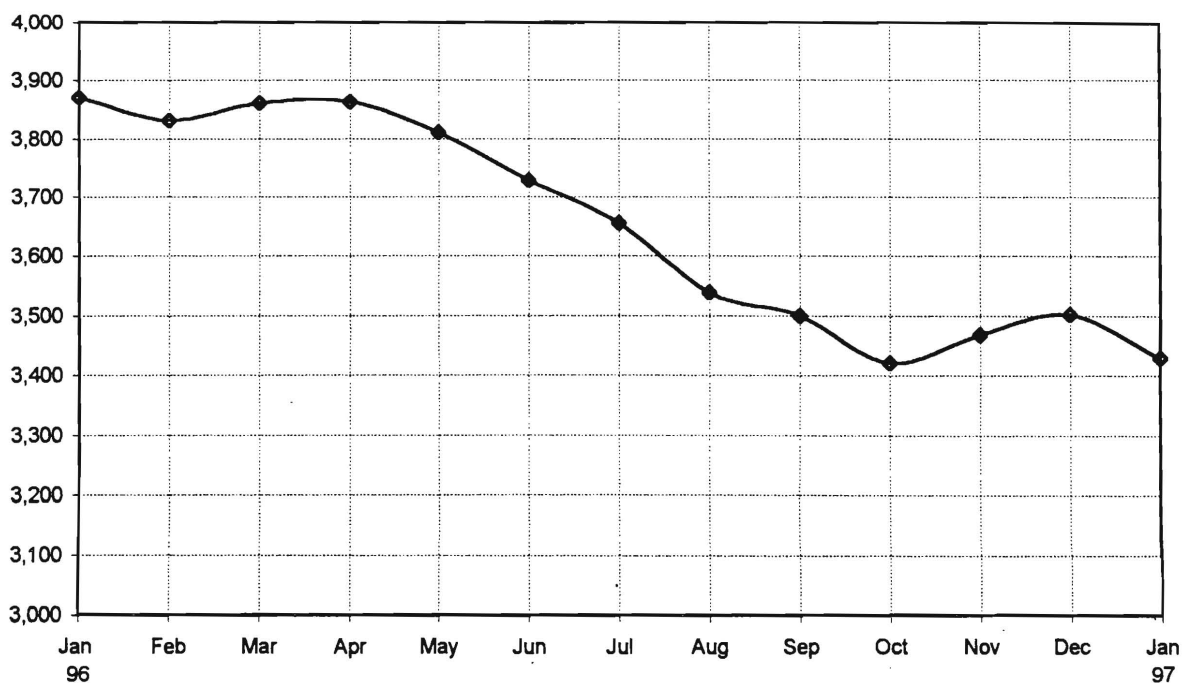
Cape May County
TOTAL FAMILIES RECEIVING AFDC AT END OF REPORT MONTH



AFDC Program County Historical Series
Cumberland County
NUMBER OF APPLICATIONS AND TERMINATIONS DURING REPORT MONTH AND
NUMBER OF ELIGIBLE FAMILIES RECEIVING AFDC AT END OF REPORT MONTH

	Applications Approved	Terminations	Regular AFDC (C Segment)	Unemployed Parents(F)	State AFDC(N)	Medicaid Only	Total AFDC
96 Jan	294	238	3,277	189	192	213	3,871
Feb	256	304	3,228	199	198	207	3,832
Mar	278	261	3,236	205	213	207	3,861
Apr	314	311	3,227	207	204	225	3,863
May	209	249	3,199	191	204	217	3,811
Jun	205	298	3,123	182	208	216	3,729
Jul	269	342	3,077	164	197	217	3,655
Aug	257	361	3,029	144	172	193	3,538
Sep	297	336	3,008	142	163	187	3,500
Oct	255	318	2,950	125	153	193	3,421
Nov	284	254	2,981	131	152	204	3,468
Dec	253	236	2,997	137	173	195	3,502
97 Jan	306	361	2,936	136	171	187	3,430

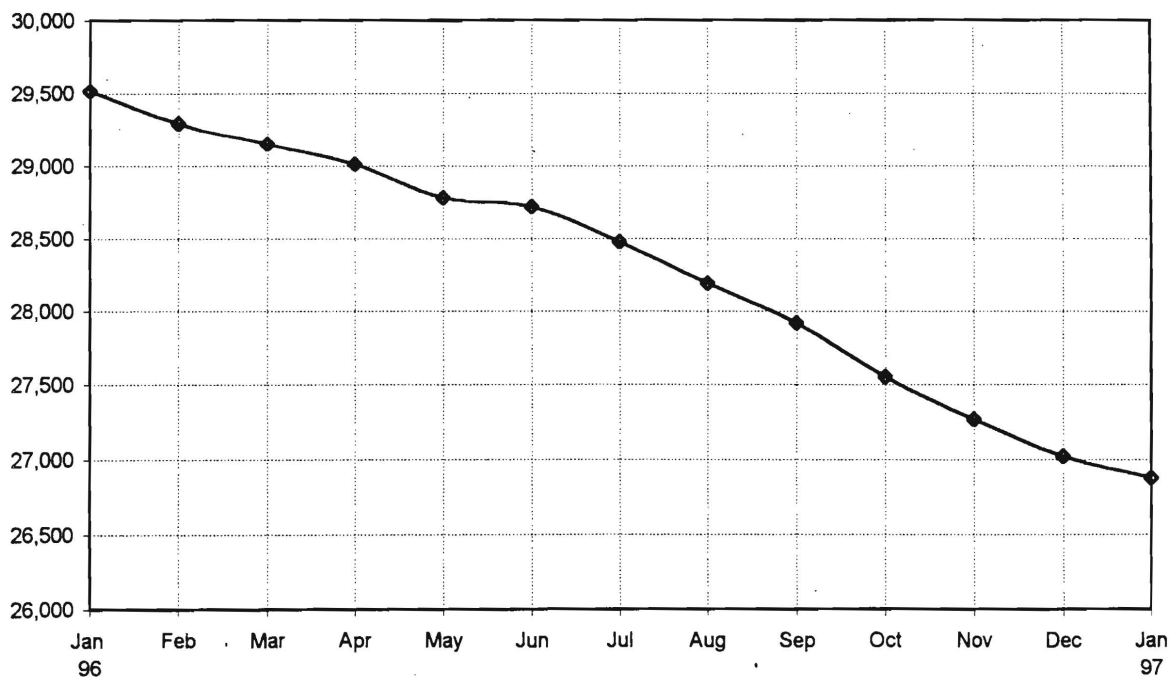
Cumberland County
TOTAL FAMILIES RECEIVING AFDC AT END OF REPORT MONTH



AFDC Program County Historical Series
Essex County
NUMBER OF APPLICATIONS AND TERMINATIONS DURING REPORT MONTH AND
NUMBER OF ELIGIBLE FAMILIES RECEIVING AFDC AT END OF REPORT MONTH

	Applications Approved	Terminations	Regular AFDC (C Segment)	Unemployed Parents(F)	State AFDC(N)	Medicaid Only	Total AFDC
96 Jan	863	1,060	28,085	439	234	761	29,519
Feb	757	990	27,888	429	227	750	29,294
Mar	942	1,078	27,746	433	227	747	29,153
Apr	273	1,265	27,610	434	223	745	29,012
May	836	1,079	27,405	431	214	728	28,778
Jun	944	1,005	27,315	421	223	760	28,719
Jul	971	1,228	27,096	406	215	759	28,476
Aug	781	1,075	26,824	403	213	751	28,191
Sep	1,048	1,328	26,573	364	214	770	27,921
Oct	825	1,198	26,277	338	209	731	27,555
Nov	874	1,166	26,007	339	203	718	27,267
Dec	800	1,057	25,782	331	197	708	27,018
97 Jan	980	1,126	25,629	333	202	712	26,876

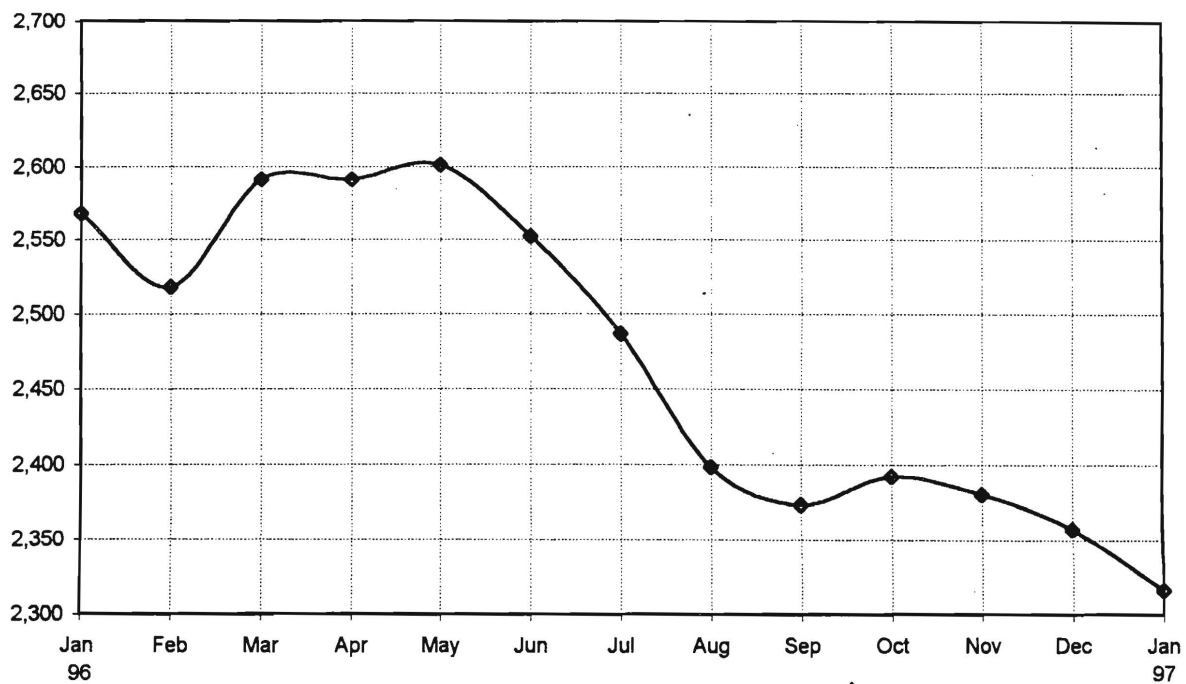
Essex County
TOTAL FAMILIES RECEIVING AFDC AT END OF REPORT MONTH



AFDC Program County Historical Series
Gloucester County
NUMBER OF APPLICATIONS AND TERMINATIONS DURING REPORT MONTH AND
NUMBER OF ELIGIBLE FAMILIES RECEIVING AFDC AT END OF REPORT MONTH

	Applications Approved	Terminations	Regular AFDC (C Segment)	Unemployed Parents(F)	State AFDC(N)	Medicaid Only	Total AFDC
96 Jan	146	249	2,220	112	78	158	2,568
Feb	230	283	2,163	118	78	159	2,518
Mar	308	239	2,226	119	78	168	2,591
Apr	248	257	2,226	126	79	160	2,591
May	163	165	2,239	131	74	157	2,601
Jun	152	201	2,200	124	71	157	2,552
Jul	179	263	2,164	101	69	153	2,487
Aug	192	274	2,087	85	67	159	2,398
Sep	246	284	2,069	81	63	160	2,373
Oct	203	191	2,081	85	62	164	2,392
Nov	192	220	2,052	94	62	172	2,380
Dec	194	225	2,016	91	62	188	2,357
97 Jan	199	250	1,975	93	63	185	2,316

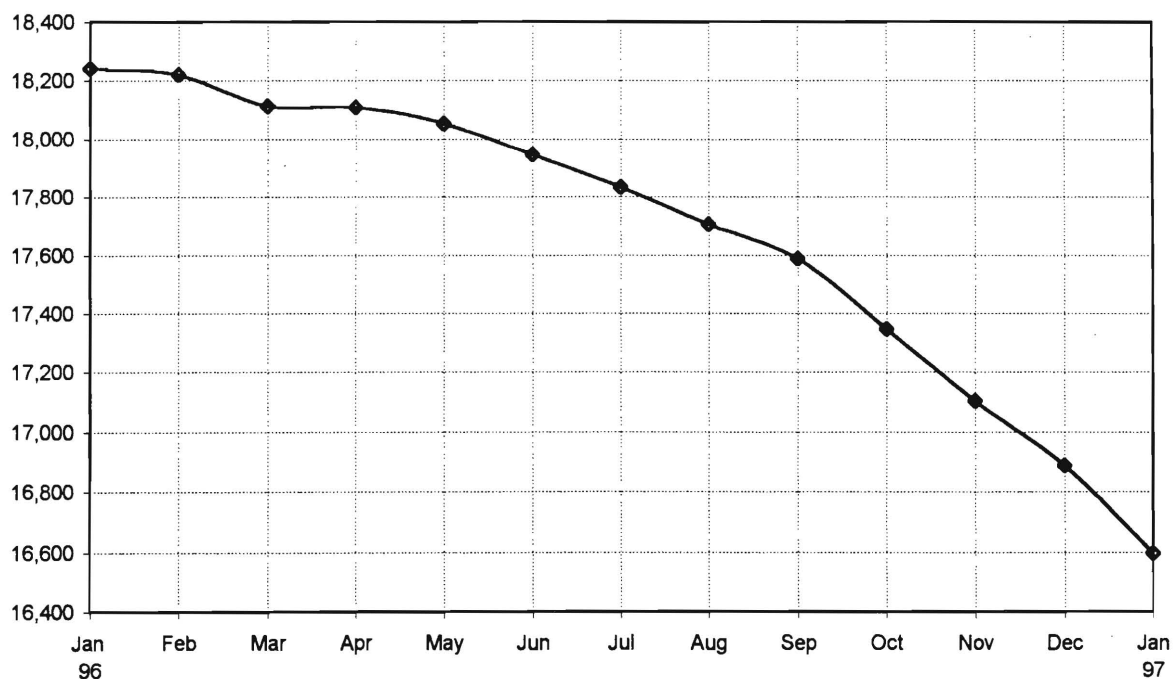
Gloucester County
TOTAL FAMILIES RECEIVING AFDC AT END OF REPORT MONTH



AFDC Program County Historical Series
Hudson County
NUMBER OF APPLICATIONS AND TERMINATIONS DURING REPORT MONTH AND
NUMBER OF ELIGIBLE FAMILIES RECEIVING AFDC AT END OF REPORT MONTH

	Applications Approved	Terminations	Regular AFDC (C Segment)	Unemployed Parents(F)	State AFDC(N)	Medicaid Only	Total AFDC
96 Jan	492	569	16,394	333	630	885	18,242
Feb	436	505	16,354	337	619	910	18,220
Mar	513	636	16,302	338	625	849	18,114
Apr	603	656	16,288	327	625	868	18,108
May	514	589	16,229	323	635	867	18,054
Jun	525	639	16,104	330	628	883	17,945
Jul	570	684	15,993	320	622	898	17,833
Aug	503	633	15,859	303	624	920	17,706
Sep	567	697	15,745	289	623	931	17,588
Oct	470	705	15,520	272	599	957	17,348
Nov	450	687	15,329	262	584	930	17,105
Dec	434	657	15,153	254	573	908	16,888
97 Jan	499	732	14,913	241	546	898	16,598

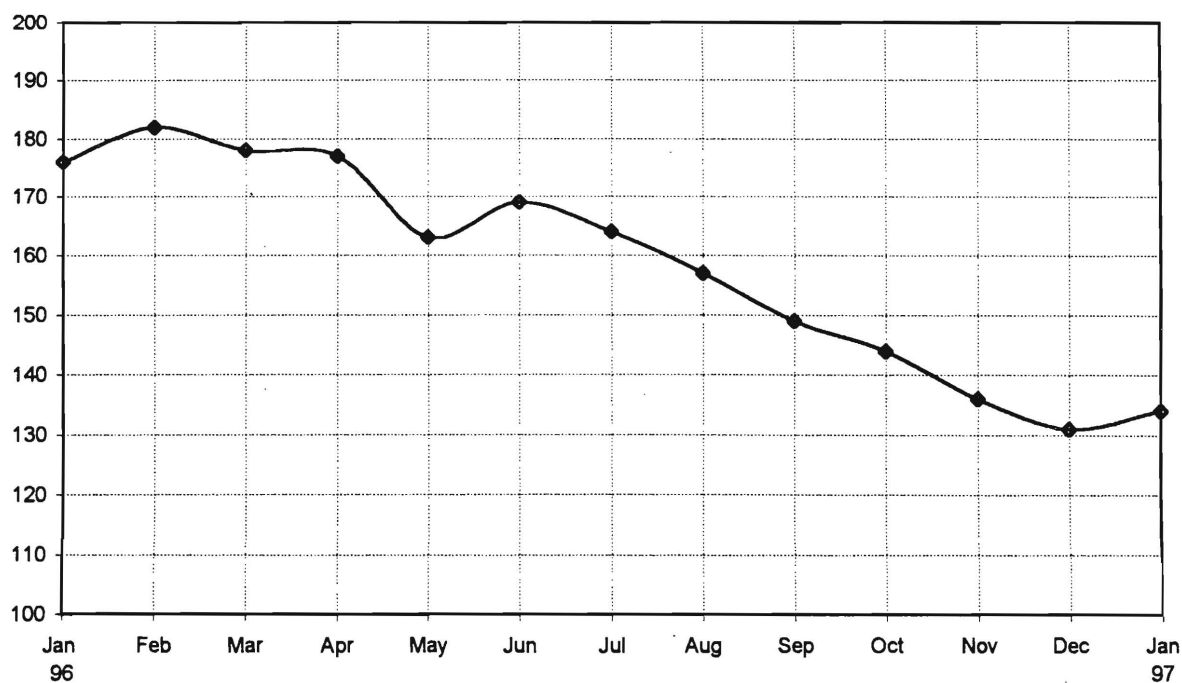
Hudson County
TOTAL FAMILIES RECEIVING AFDC AT END OF REPORT MONTH



AFDC Program County Historical Series
Hunterdon County
NUMBER OF APPLICATIONS AND TERMINATIONS DURING REPORT MONTH AND
NUMBER OF ELIGIBLE FAMILIES RECEIVING AFDC AT END OF REPORT MONTH

	Applications Approved	Terminations	Regular AFDC (C Segment)	Unemployed Parents(F)	State AFDC(N)	Medicaid Only	Total AFDC
96 Jan	11	16	145	4	7	20	176
Feb	16	11	149	3	9	21	182
Mar	17	18	145	5	9	19	178
Apr	21	24	147	5	7	18	177
May	13	24	133	4	7	19	163
Jun	22	14	139	4	7	19	169
Jul	22	24	132	4	5	23	164
Aug	21	26	123	3	4	27	157
Sep	23	32	115	3	4	27	149
Oct	21	26	114	4	4	22	144
Nov	17	27	111	3	5	17	136
Dec	14	18	104	3	5	19	131
97 Jan	19	16	101	5	7	21	134

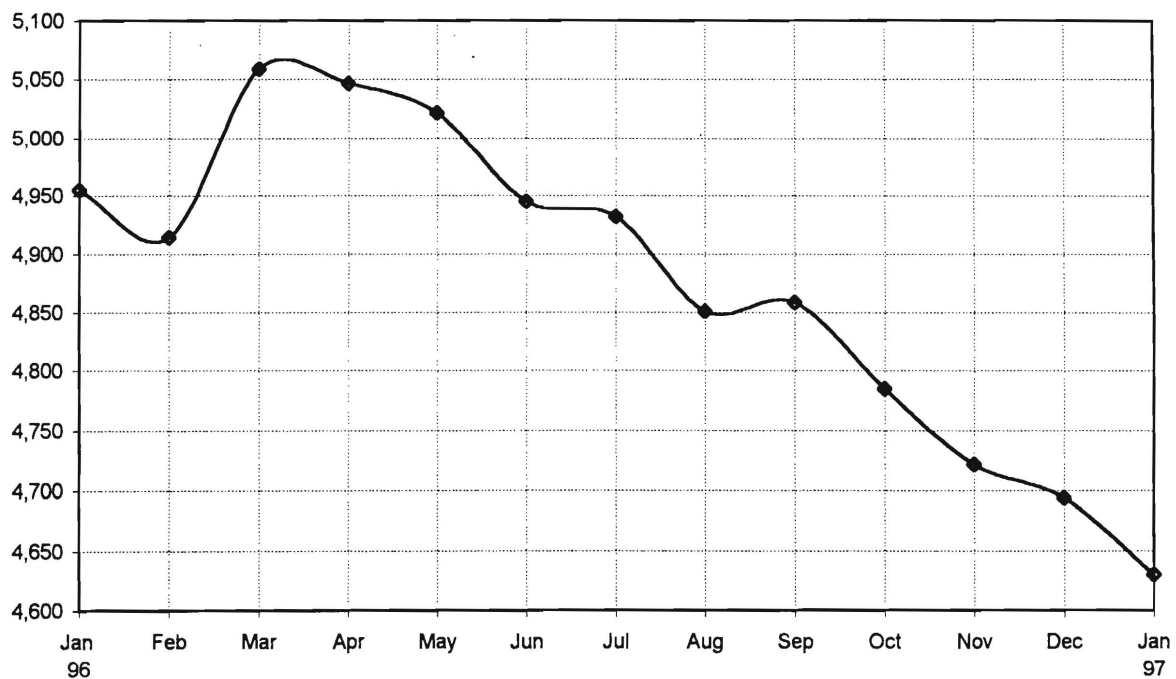
Hunterdon County
TOTAL FAMILIES RECEIVING AFDC AT END OF REPORT MONTH



AFDC Program County Historical Series
Mercer County
NUMBER OF APPLICATIONS AND TERMINATIONS DURING REPORT MONTH AND
NUMBER OF ELIGIBLE FAMILIES RECEIVING AFDC AT END OF REPORT MONTH

	Applications Approved	Terminations	Regular AFDC (C Segment)	Unemployed Parents(F)	State AFDC(N)	Medicaid Only	Total AFDC
96 Jan	410	442	4,452	86	94	323	4,955
Feb	417	462	4,425	87	90	312	4,914
Mar	539	396	4,550	93	103	313	5,059
Apr	479	494	4,534	92	101	320	5,047
May	394	418	4,493	93	105	331	5,022
Jun	371	443	4,426	87	100	332	4,945
Jul	458	471	4,400	85	98	349	4,932
Aug	422	502	4,320	85	105	341	4,851
Sep	496	491	4,308	80	101	370	4,859
Oct	406	482	4,251	89	101	344	4,785
Nov	406	468	4,197	93	95	337	4,722
Dec	375	404	4,165	91	101	337	4,694
97 Jan	461	524	4,115	78	103	334	4,630

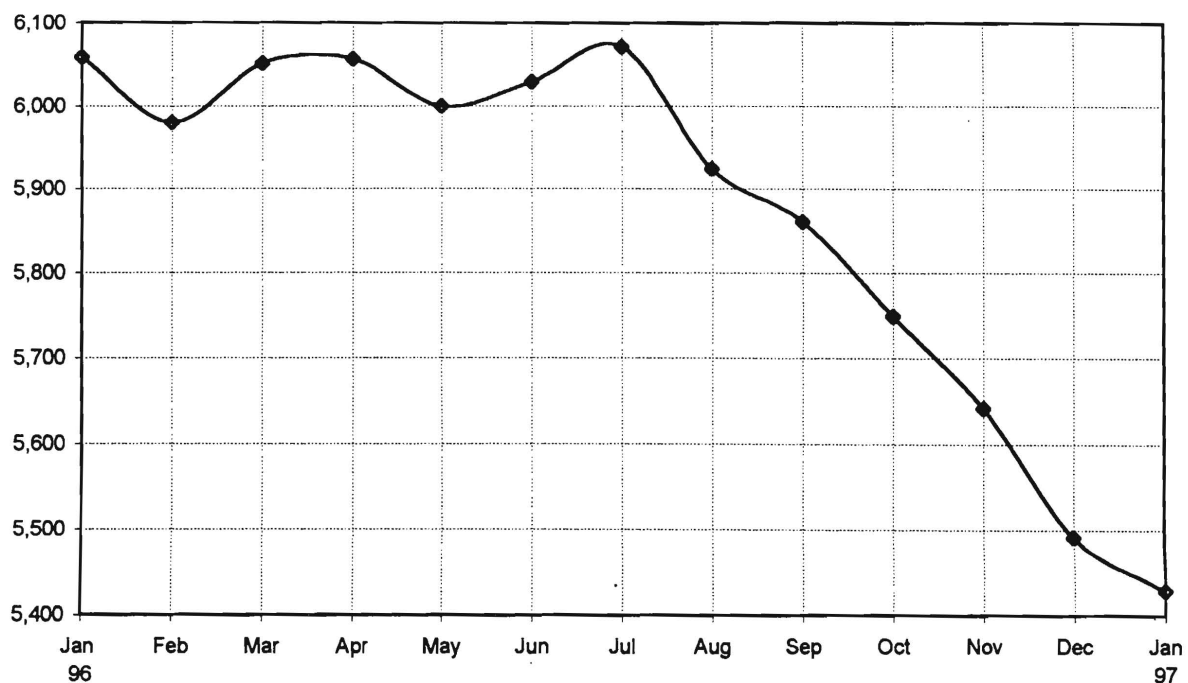
Mercer County
TOTAL FAMILIES RECEIVING AFDC AT END OF REPORT MONTH



AFDC Program County Historical Series
Middlesex County
NUMBER OF APPLICATIONS AND TERMINATIONS DURING REPORT MONTH AND
NUMBER OF ELIGIBLE FAMILIES RECEIVING AFDC AT END OF REPORT MONTH

	Applications Approved	Terminations	Regular AFDC (C Segment)	Unemployed Parents(F)	State AFDC(N)	Medicaid Only	Total AFDC
96 Jan	312	481	5,067	219	275	498	6,059
Feb	321	416	5,024	224	282	450	5,980
Mar	420	371	5,082	230	289	450	6,051
Apr	488	492	5,067	226	279	484	6,056
May	392	457	5,007	232	278	483	6,000
Jun	386	376	5,040	231	267	491	6,029
Jul	402	380	5,043	232	272	524	6,071
Aug	313	473	4,945	221	266	492	5,924
Sep	456	533	4,912	211	255	483	5,861
Oct	363	479	4,815	194	245	495	5,749
Nov	339	460	4,717	189	236	500	5,642
Dec	260	423	4,601	188	218	485	5,492
97 Jan	395	471	4,530	195	223	481	5,429

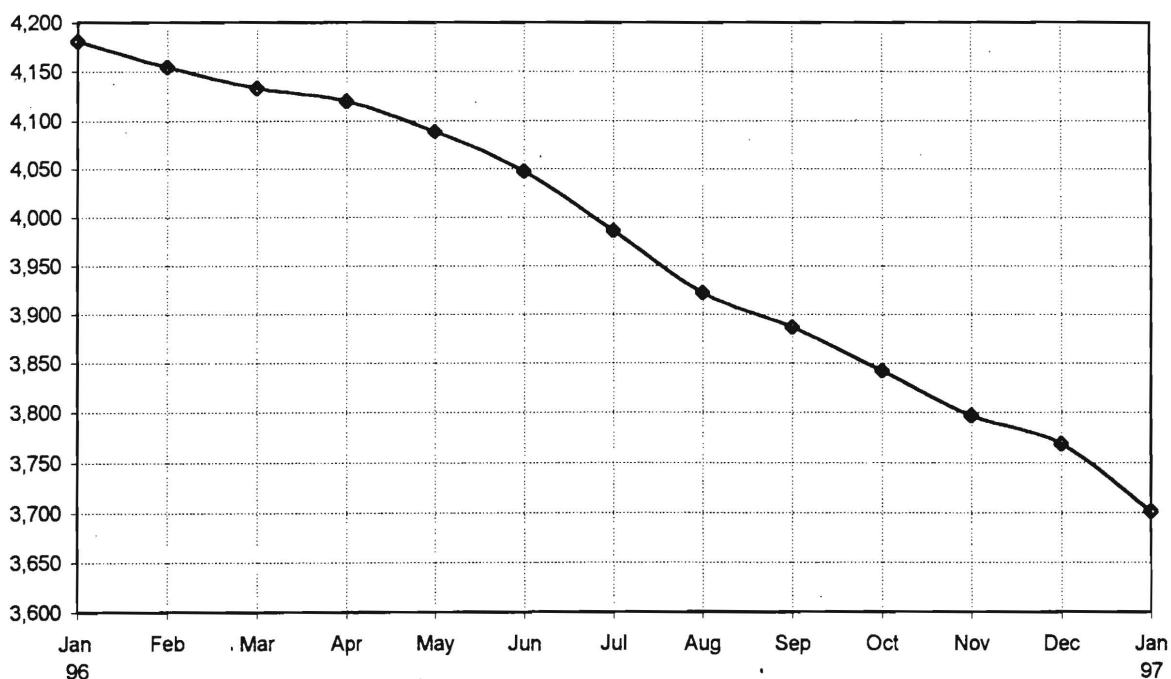
Middlesex County
TOTAL FAMILIES RECEIVING AFDC AT END OF REPORT MONTH



AFDC Program County Historical Series
Monmouth County
NUMBER OF APPLICATIONS AND TERMINATIONS DURING REPORT MONTH AND
NUMBER OF ELIGIBLE FAMILIES RECEIVING AFDC AT END OF REPORT MONTH

	Applications Approved	Terminations	Regular AFDC (C Segment)	Unemployed Parents(F)	State AFDC(N)	Medicaid Only	Total AFDC
96 Jan	214	305	3,873	80	172	56	4,181
Feb	218	249	3,846	77	178	54	4,155
Mar	233	257	3,809	79	187	58	4,133
Apr	258	279	3,798	82	185	55	4,120
May	224	256	3,775	82	179	53	4,089
Jun	207	248	3,753	73	165	56	4,047
Jul	233	295	3,699	72	153	62	3,986
Aug	206	276	3,642	69	149	62	3,922
Sep	274	309	3,616	67	141	63	3,887
Oct	239	284	3,572	61	142	67	3,842
Nov	219	268	3,537	60	131	69	3,797
Dec	227	258	3,513	58	130	68	3,769
97 Jan	244	308	3,446	59	133	63	3,701

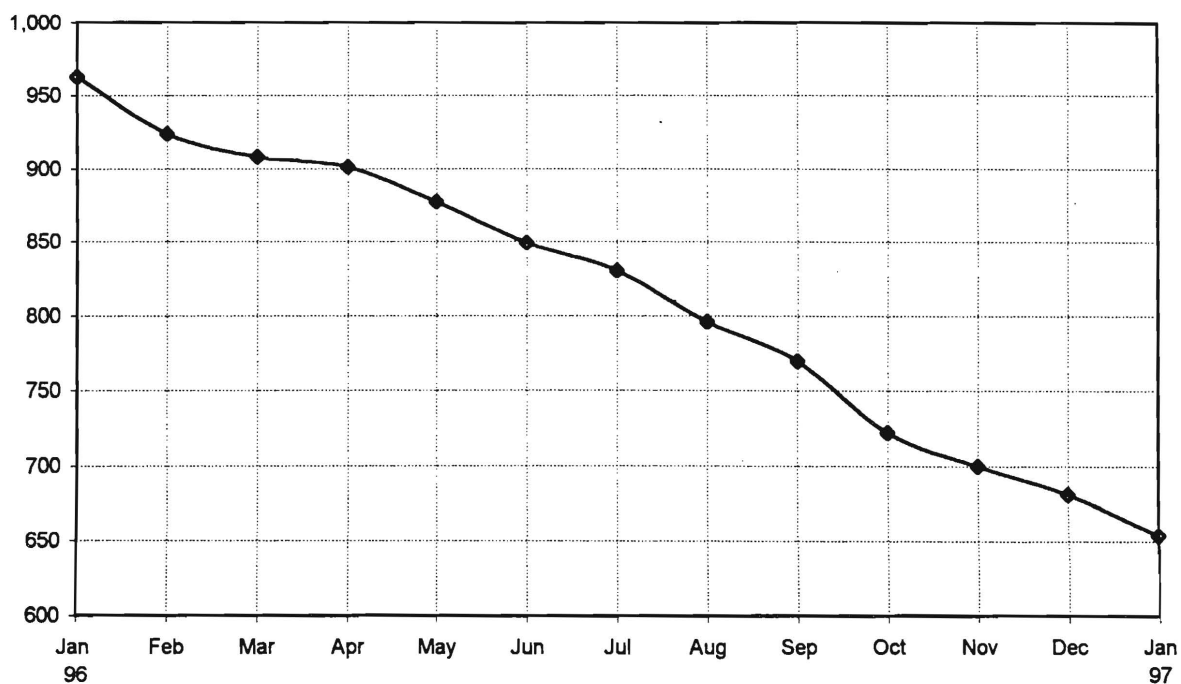
Monmouth County
TOTAL FAMILIES RECEIVING AFDC AT END OF REPORT MONTH



AFDC Program County Historical Series
Morris County
NUMBER OF APPLICATIONS AND TERMINATIONS DURING REPORT MONTH AND
NUMBER OF ELIGIBLE FAMILIES RECEIVING AFDC AT END OF REPORT MONTH

	Applications Approved	Terminations	Regular AFDC (C Segment)	Unemployed Parents(F)	State AFDC(N)	Medicaid Only	Total AFDC
96 Jan	67	68	850	33	34	46	963
Feb	51	63	822	28	30	44	924
Mar	60	69	814	29	28	37	908
Apr	69	87	807	34	25	35	901
May	48	82	795	24	26	32	877
Jun	48	76	768	27	23	31	849
Jul	58	91	747	26	23	34	830
Aug	51	63	721	22	20	33	796
Sep	58	83	701	19	19	31	770
Oct	32	76	659	20	17	26	722
Nov	44	71	643	16	14	27	700
Dec	42	60	626	15	15	25	681
97 Jan	46	73	597	16	12	29	654

Morris County
TOTAL FAMILIES RECEIVING AFDC AT END OF REPORT MONTH

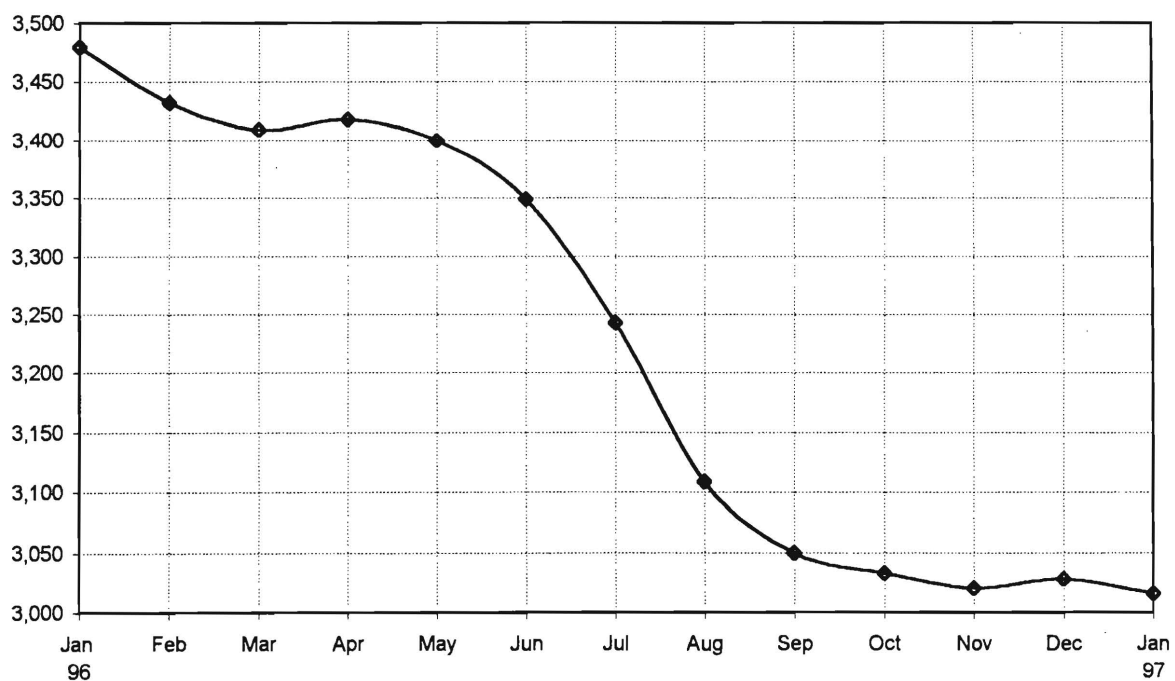


**AFDC Program County Historical Series
Ocean County**

**NUMBER OF APPLICATIONS AND TERMINATIONS DURING REPORT MONTH AND
NUMBER OF ELIGIBLE FAMILIES RECEIVING AFDC AT END OF REPORT MONTH**

	Applications Approved	Terminations	Regular AFDC (C Segment)	Unemployed Parents(F)	State AFDC(N)	Medicaid Only	Total AFDC
96 Jan	210	230	2,939	170	156	215	3,480
Feb	213	266	2,899	163	158	212	3,432
Mar	224	251	2,877	166	154	212	3,409
Apr	272	274	2,893	159	159	207	3,418
May	206	229	2,873	154	148	225	3,400
Jun	187	240	2,834	141	147	227	3,349
Jul	215	330	2,743	130	147	223	3,243
Aug	199	330	2,649	116	137	207	3,109
Sep	239	299	2,608	119	131	192	3,050
Oct	239	267	2,588	120	122	203	3,033
Nov	222	243	2,577	110	122	211	3,020
Dec	206	209	2,571	112	126	219	3,028
97 Jan	243	263	2,544	120	127	225	3,016

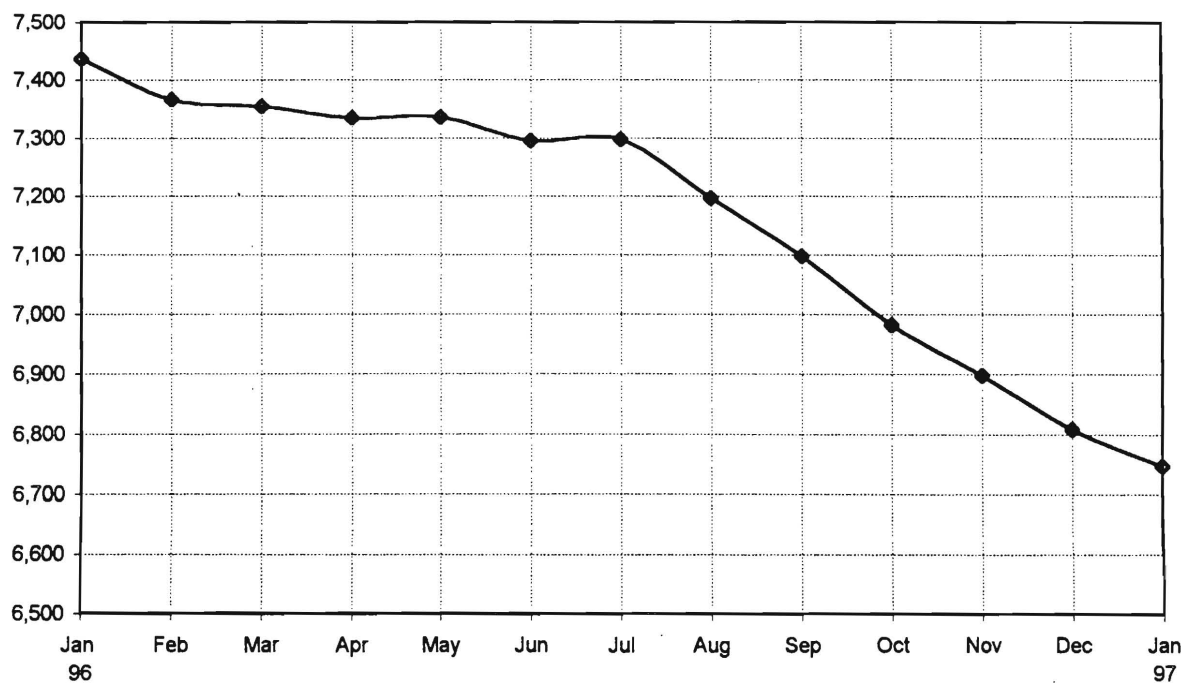
**Ocean County
TOTAL FAMILIES RECEIVING AFDC AT END OF REPORT MONTH**



AFDC Program County Historical Series
Passaic County
NUMBER OF APPLICATIONS AND TERMINATIONS DURING REPORT MONTH AND
NUMBER OF ELIGIBLE FAMILIES RECEIVING AFDC AT END OF REPORT MONTH

	Applications Approved	Terminations	Regular AFDC (C Segment)	Unemployed Parents(F)	State AFDC(N)	Medicaid Only	Total AFDC
96 Jan	311	378	6,823	280	270	63	7,436
Feb	324	394	6,764	286	248	69	7,367
Mar	376	368	6,747	284	254	69	7,354
Apr	378	411	6,715	289	259	72	7,335
May	360	348	6,728	279	261	68	7,336
Jun	314	358	6,695	273	260	67	7,295
Jul	376	376	6,713	265	251	69	7,298
Aug	312	404	6,635	249	247	66	7,197
Sep	335	423	6,567	232	233	65	7,097
Oct	339	444	6,473	219	233	58	6,983
Nov	320	409	6,409	206	225	58	6,898
Dec	347	414	6,326	200	219	63	6,808
97 Jan	336	421	6,283	188	216	60	6,747

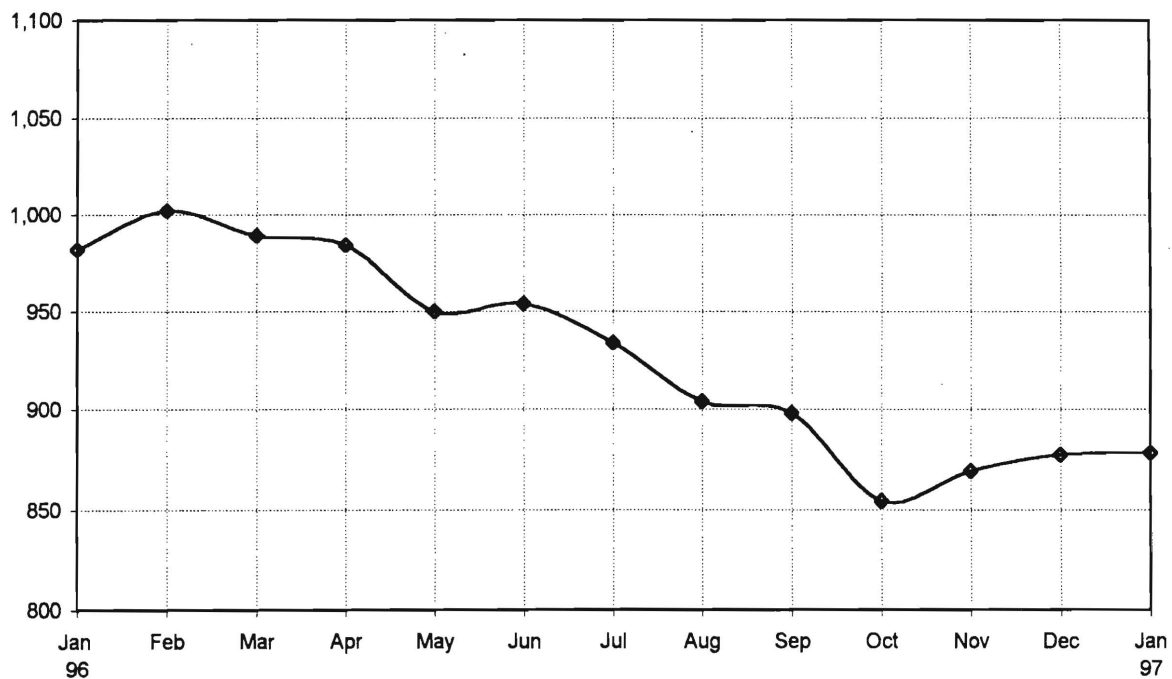
Passaic County
TOTAL FAMILIES RECEIVING AFDC AT END OF REPORT MONTH



AFDC Program County Historical Series
Salem County
NUMBER OF APPLICATIONS AND TERMINATIONS DURING REPORT MONTH AND
NUMBER OF ELIGIBLE FAMILIES RECEIVING AFDC AT END OF REPORT MONTH

	Applications Approved	Terminations	Regular AFDC (C Segment)	Unemployed Parents(F)	State AFDC(N)	Medicaid Only	Total AFDC
96 Jan	90	90	872	16	27	67	982
Feb	97	94	878	18	29	77	1,002
Mar	91	79	869	23	27	70	989
Apr	109	120	875	20	31	58	984
May	101	100	839	16	28	67	950
Jun	80	87	845	17	30	62	954
Jul	86	104	828	16	31	59	934
Aug	72	100	799	14	33	58	904
Sep	86	89	799	10	29	60	898
Oct	70	101	763	13	29	49	854
Nov	95	91	772	10	31	56	869
Dec	74	73	775	11	33	58	877
97 Jan	81	86	777	10	29	62	878

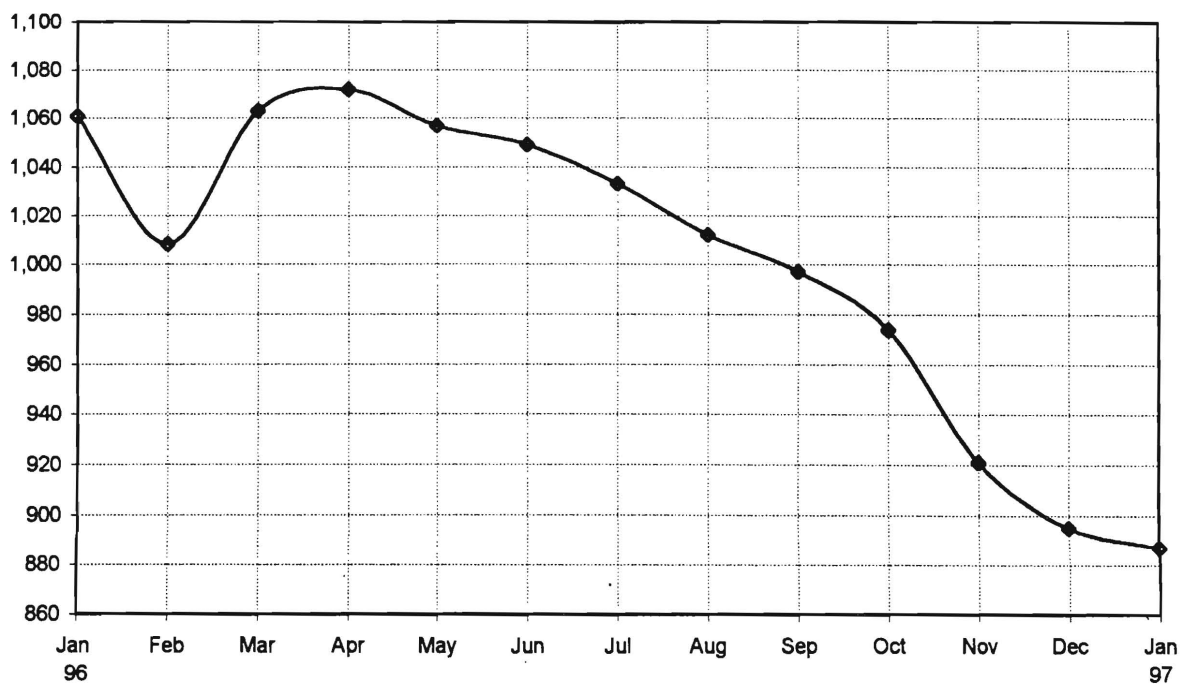
Salem County
TOTAL FAMILIES RECEIVING AFDC AT END OF REPORT MONTH



AFDC Program County Historical Series
Somerset County
NUMBER OF APPLICATIONS AND TERMINATIONS DURING REPORT MONTH AND
NUMBER OF ELIGIBLE FAMILIES RECEIVING AFDC AT END OF REPORT MONTH

	Applications Approved	Terminations	Regular AFDC (C Segment)	Unemployed Parents(F)	State AFDC(N)	Medicaid Only	Total AFDC
96 Jan	106	111	843	45	36	137	1,061
Feb	101	150	809	41	34	124	1,008
Mar	155	112	845	47	36	135	1,063
Apr	130	123	862	47	39	124	1,072
May	121	128	853	46	35	123	1,057
Jun	112	124	848	43	34	124	1,049
Jul	143	154	840	42	35	116	1,033
Aug	114	133	826	35	35	116	1,012
Sep	136	152	805	32	35	125	997
Oct	105	122	783	34	36	121	974
Nov	76	124	749	35	28	109	921
Dec	85	107	741	32	26	96	895
97 Jan	107	111	736	32	28	91	887

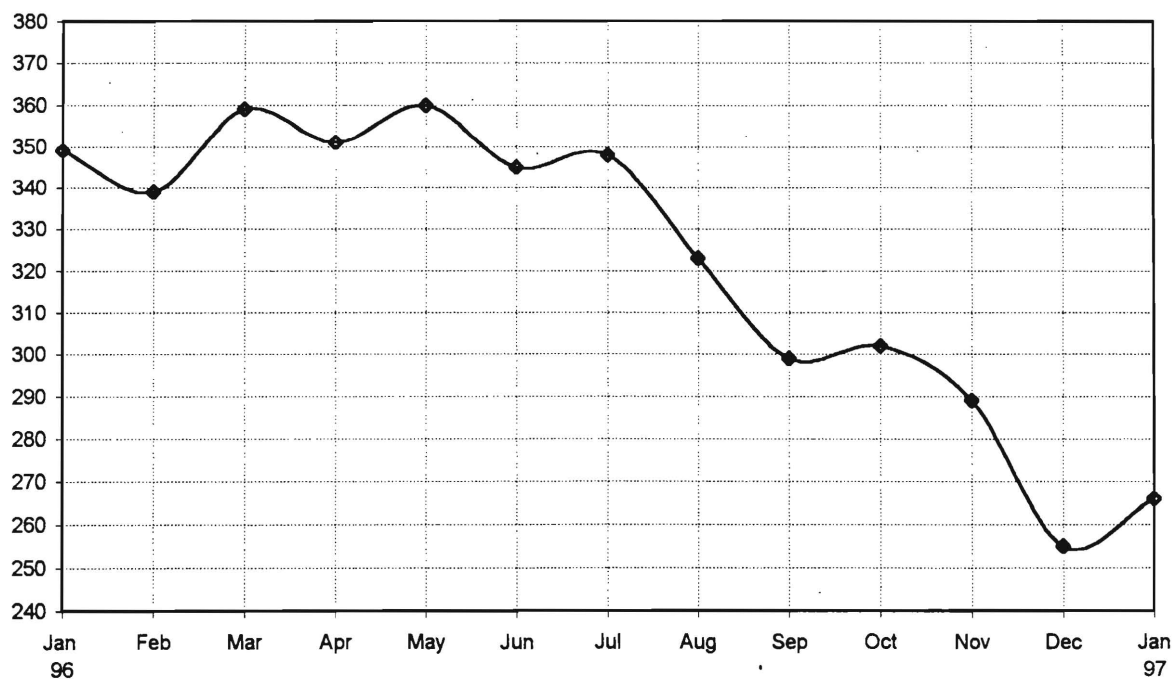
Somerset County
TOTAL FAMILIES RECEIVING AFDC AT END OF REPORT MONTH



AFDC Program County Historical Series
Sussex County
NUMBER OF APPLICATIONS AND TERMINATIONS DURING REPORT MONTH AND
NUMBER OF ELIGIBLE FAMILIES RECEIVING AFDC AT END OF REPORT MONTH

	Applications Approved	Terminations	Regular AFDC (C Segment)	Unemployed Parents(F)	State AFDC(N)	Medicaid Only	Total AFDC
96 Jan	31	51	293	15	4	37	349
Feb	30	47	284	12	6	37	339
Mar	48	40	299	12	7	41	359
Apr	45	43	290	9	5	47	351
May	38	36	285	15	6	54	360
Jun	30	40	283	9	3	50	345
Jul	37	64	296	10	4	38	348
Aug	36	45	274	6	2	41	323
Sep	30	48	255	2	2	40	299
Oct	42	52	254	6	2	40	302
Nov	32	42	231	8	2	48	289
Dec	12	48	205	8	2	40	255
97 Jan	35	34	209	8	2	47	266

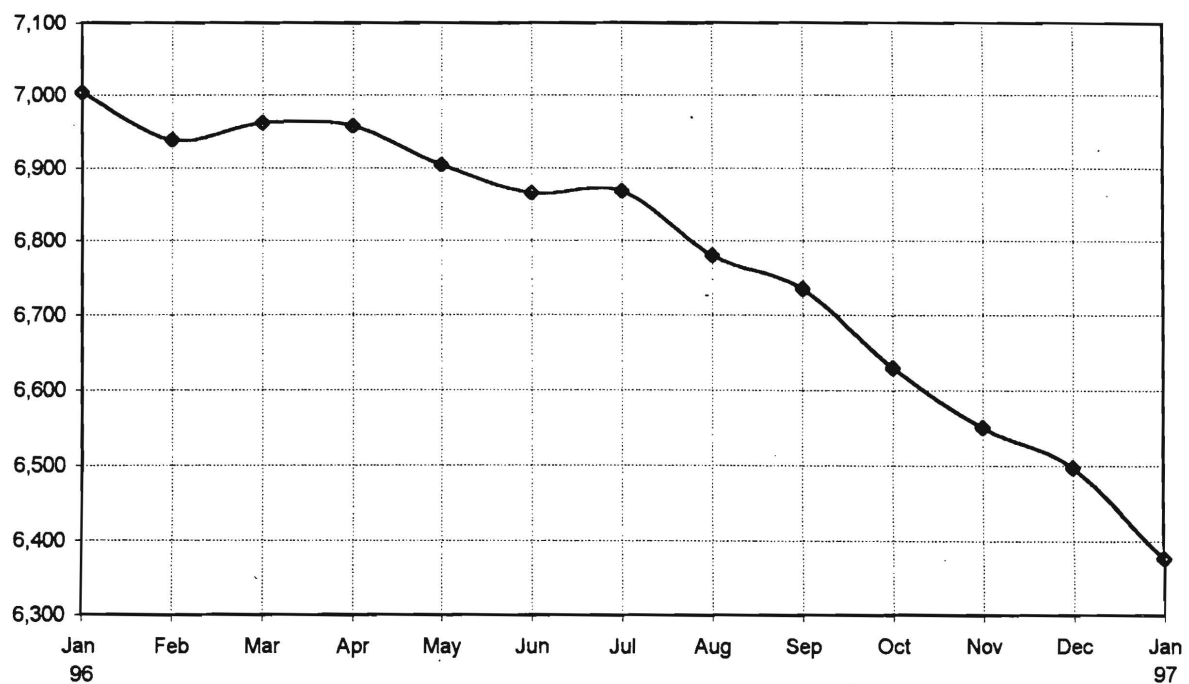
Sussex County
TOTAL FAMILIES RECEIVING AFDC AT END OF REPORT MONTH



AFDC Program County Historical Series
Union County
NUMBER OF APPLICATIONS AND TERMINATIONS DURING REPORT MONTH AND
NUMBER OF ELIGIBLE FAMILIES RECEIVING AFDC AT END OF REPORT MONTH

	Applications Approved	Terminations	Regular AFDC (C Segment)	Unemployed Parents(F)	State AFDC(N)	Medicaid Only	Total AFDC
96 Jan	346	354	6,333	125	207	339	7,004
Feb	315	399	6,257	127	214	340	6,938
Mar	399	386	6,274	133	205	350	6,962
Apr	450	453	6,266	124	208	359	6,957
May	328	391	6,226	113	202	363	6,904
Jun	328	372	6,199	103	194	369	6,865
Jul	404	406	6,171	110	193	394	6,868
Aug	286	381	6,099	107	185	389	6,780
Sep	404	461	6,045	97	190	403	6,735
Oct	328	428	5,966	95	179	390	6,630
Nov	362	442	5,892	92	175	391	6,550
Dec	341	399	5,871	84	161	381	6,497
97 Jan	349	446	5,768	92	167	349	6,376

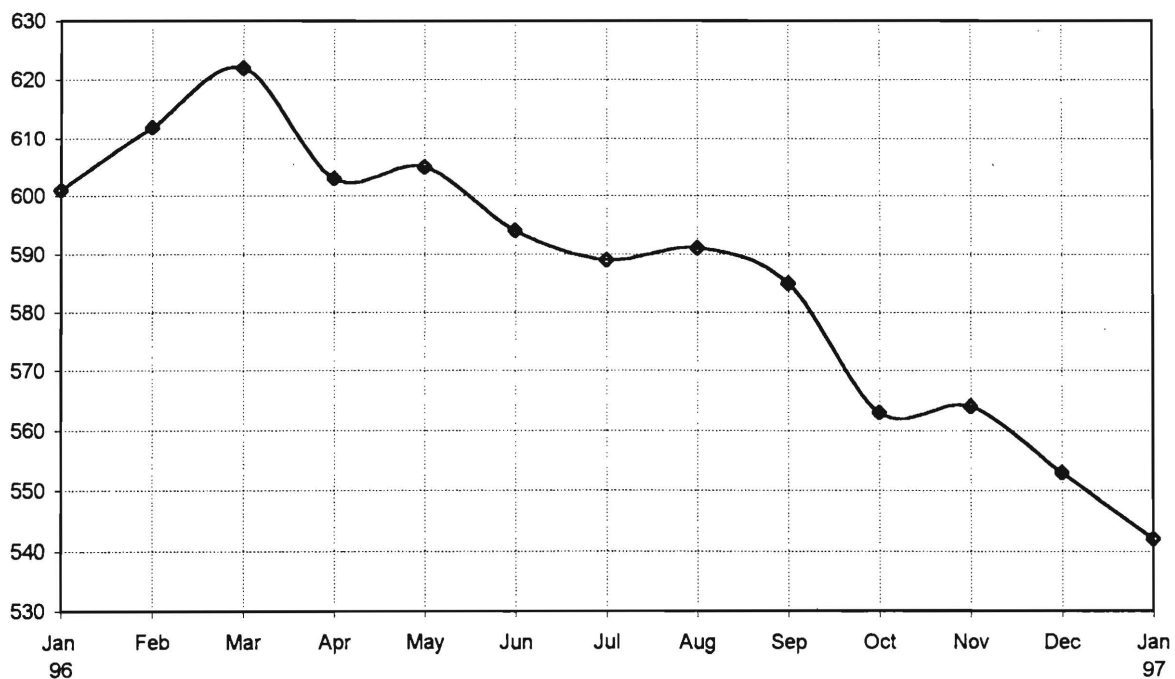
Union County
TOTAL FAMILIES RECEIVING AFDC AT END OF REPORT MONTH



AFDC Program County Historical Series
Warren County
NUMBER OF APPLICATIONS AND TERMINATIONS DURING REPORT MONTH AND
NUMBER OF ELIGIBLE FAMILIES RECEIVING AFDC AT END OF REPORT MONTH

	Applications Approved	Terminations	Regular AFDC (C Segment)	Unemployed Parents(F)	State AFDC(N)	Medicaid Only	Total AFDC
96 Jan	25	40	504	32	33	32	601
Feb	39	32	509	35	38	30	612
Mar	58	52	520	37	38	27	622
Apr	48	68	515	33	31	24	603
May	47	47	514	33	29	29	605
Jun	38	48	502	28	29	35	594
Jul	45	53	496	28	34	31	589
Aug	40	40	492	25	38	36	591
Sep	46	54	486	21	38	40	585
Oct	33	54	471	20	31	41	563
Nov	32	36	478	20	31	35	564
Dec	37	50	474	22	28	29	553
97 Jan	42	52	461	20	26	35	542

Warren County
TOTAL FAMILIES RECEIVING AFDC AT END OF REPORT MONTH



CURRENT PROGRAM STATISTICS

ANNUAL SUPPLEMENT

B. FOOD STAMP PROGRAM

COUNTY SUMMARIES

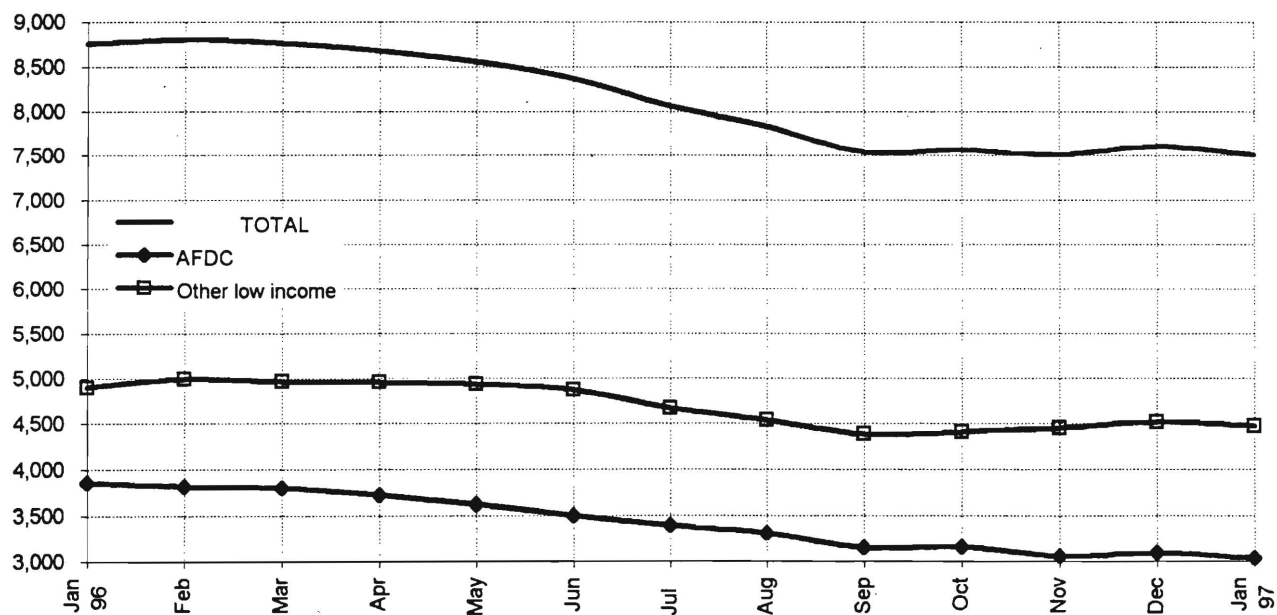
JANUARY 1996 - JANUARY 1997

FOOD STAMP Program County Historical Series
Atlantic County
NUMBER OF ATP'S ISSUED TO HOUSEHOLDS, PERSONS
ADULTS AND CHILDREN AT THE END OF THE REPORT MONTH

<u>HOUSEHOLDS</u>				<u>PERSONS</u>				
		Other low income		TOTAL	Other low income		Adults	Children
		AFDC			AFDC			
96	Jan	3,858	4,899	8,757	19,118	12,296	6,822	9,492
	Feb	3,818	4,988	8,806	19,072	12,213	6,859	9,548
	Mar	3,803	4,960	8,763	19,054	12,214	6,840	9,497
	Apr	3,722	4,953	8,675	18,770	11,929	6,841	9,416
	May	3,626	4,932	8,558	18,469	11,715	6,754	9,268
	Jun	3,498	4,871	8,369	18,051	11,318	6,733	9,027
	Jul	3,392	4,669	8,061	17,381	10,969	6,412	8,659
	Aug	3,307	4,536	7,843	16,936	10,723	6,213	8,391
	Sep	3,152	4,391	7,543	16,259	10,211	6,048	8,070
	Oct	3,159	4,412	7,571	16,407	10,226	6,181	8,105
	Nov	3,058	4,452	7,510	16,252	9,936	6,316	8,045
	Dec	3,090	4,518	7,608	16,471	10,021	6,450	8,185
97	Jan	3,033	4,476	7,509	16,242	9,824	6,418	8,069

Data is derived from NJ Division of Family Development's FAMIS report # FB-160.

Atlantic County
FOOD STAMP HOUSEHOLDS

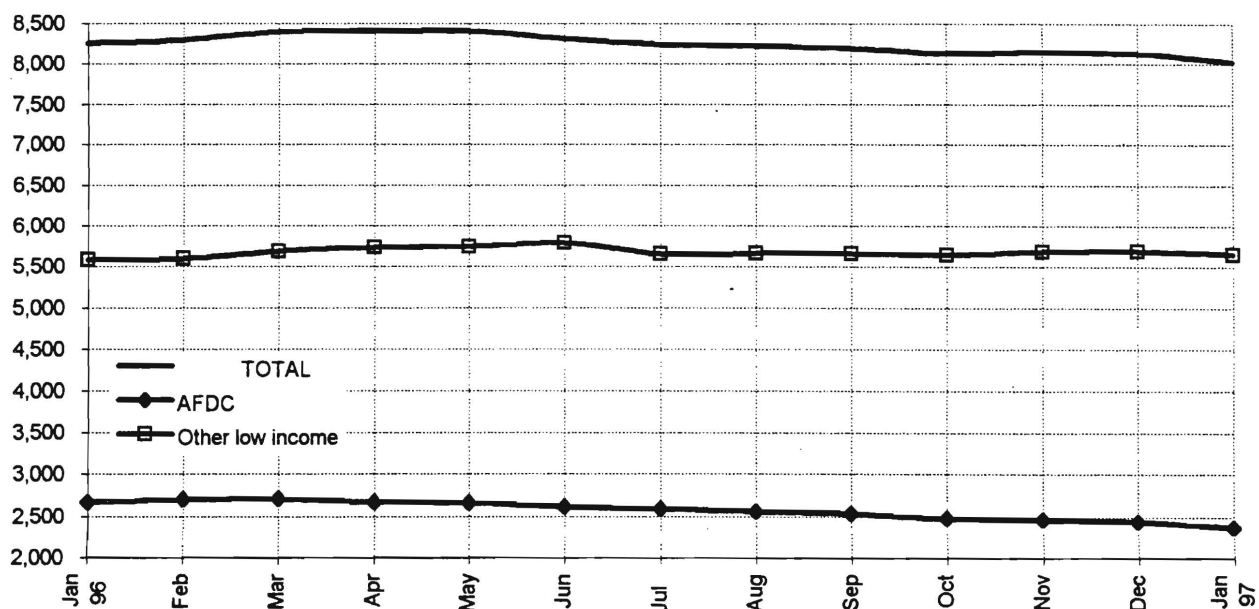


FOOD STAMP Program County Historical Series
Bergen County
NUMBER OF ATP'S ISSUED TO HOUSEHOLDS, PERSONS
ADULTS AND CHILDREN AT THE END OF THE REPORT MONTH

<u>HOUSEHOLDS</u>				<u>PERSONS</u>				
		AFDC	Other low income	TOTAL	TOTAL	AFDC	Other low income	Adults Children
96	Jan	2,669	5,585	8,254	16,489	7,912	8,577	9,606 6,883
	Feb	2,700	5,597	8,297	16,609	8,032	8,577	9,685 6,924
	Mar	2,710	5,686	8,396	16,803	8,068	8,735	9,809 6,994
	Apr	2,670	5,734	8,404	16,739	7,966	8,773	9,787 6,952
	May	2,663	5,743	8,406	16,728	7,956	8,772	9,793 6,935
	Jun	2,615	5,790	8,314	16,515	7,811	8,704	9,696 6,819
	Jul	2,589	5,649	8,238	16,342	7,733	8,609	9,606 6,736
	Aug	2,557	5,664	8,221	16,214	7,616	8,598	9,555 6,659
	Sep	2,534	5,660	8,194	16,079	7,523	8,556	9,529 6,550
	Oct	2,484	5,644	8,128	15,836	7,359	8,477	9,428 6,408
	Nov	2,465	5,681	8,146	15,775	7,304	8,471	9,419 6,356
	Dec	2,439	5,693	8,132	15,738	7,254	8,484	9,390 6,348
97	Jan	2,374	5,656	8,030	15,489	7,053	8,436	9,264 6,225

Data is derived from NJ Division of Family Development's FAMIS report # FB-160.

Bergen County
FOOD STAMP HOUSEHOLDS

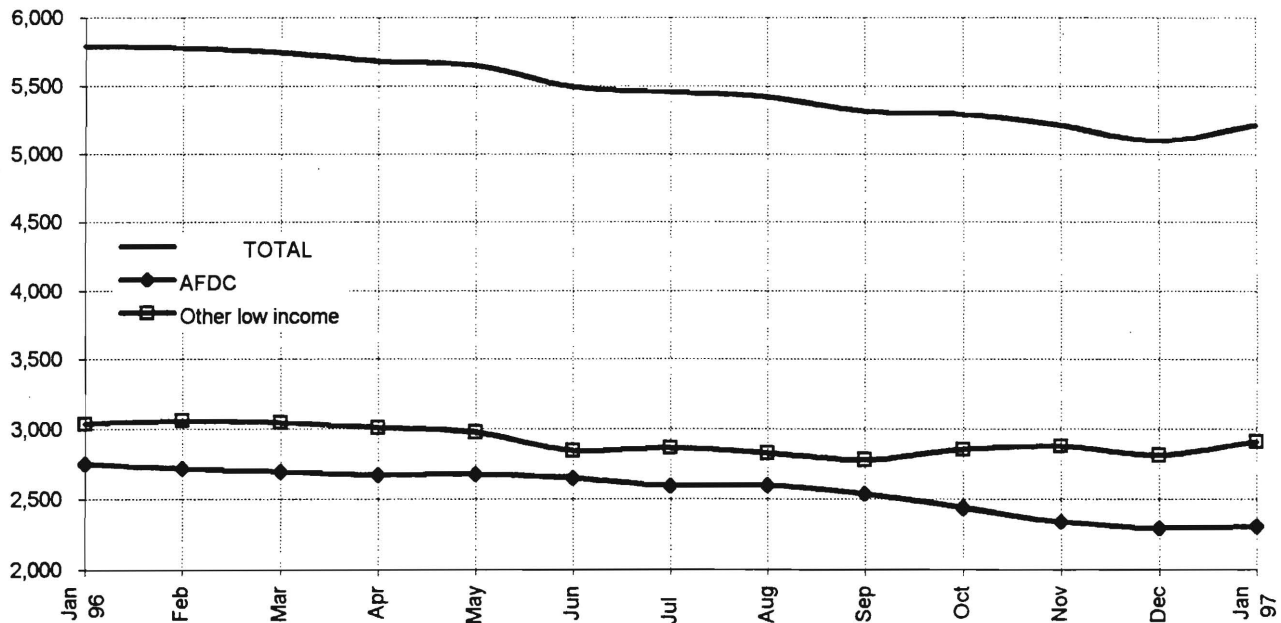


FOOD STAMP Program County Historical Series
Burlington County
NUMBER OF ATP'S ISSUED TO HOUSEHOLDS, PERSONS
ADULTS AND CHILDREN AT THE END OF THE REPORT MONTH

<u>HOUSEHOLDS</u>					<u>PERSONS</u>				
Other low					Other low				
		AFDC	income	TOTAL	TOTAL	AFDC	income	Adults	Children
96	Jan	2,751	3,037	5,788	13,301	8,294	5,007	6,524	6,777
	Feb	2,718	3,060	5,778	13,227	8,226	5,001	6,545	6,682
	Mar	2,697	3,044	5,741	13,124	8,180	4,944	6,513	6,611
	Apr	2,673	3,010	5,683	12,991	8,146	4,845	6,435	6,556
	May	2,675	2,975	5,650	12,935	8,130	4,805	6,383	6,552
	Jun	2,649	2,845	5,494	12,599	8,005	4,594	6,187	6,412
	Jul	2,592	2,865	5,457	12,426	7,857	4,569	6,133	6,293
	Aug	2,596	2,827	5,423	12,377	7,884	4,493	6,074	6,303
	Sep	2,538	2,781	5,319	12,143	7,738	4,405	5,972	6,171
	Oct	2,438	2,856	5,294	12,066	7,496	4,570	5,970	6,096
	Nov	2,339	2,877	5,216	11,857	7,270	4,587	5,897	5,960
	Dec	2,294	2,810	5,104	11,630	7,130	4,500	5,765	5,865
97	Jan	2,309	2,909	5,218	11,873	7,213	4,660	5,904	5,969

Data is derived from NJ Division of Family Development's FAMIS report # FB-160.

Burlington County
FOOD STAMP HOUSEHOLDS

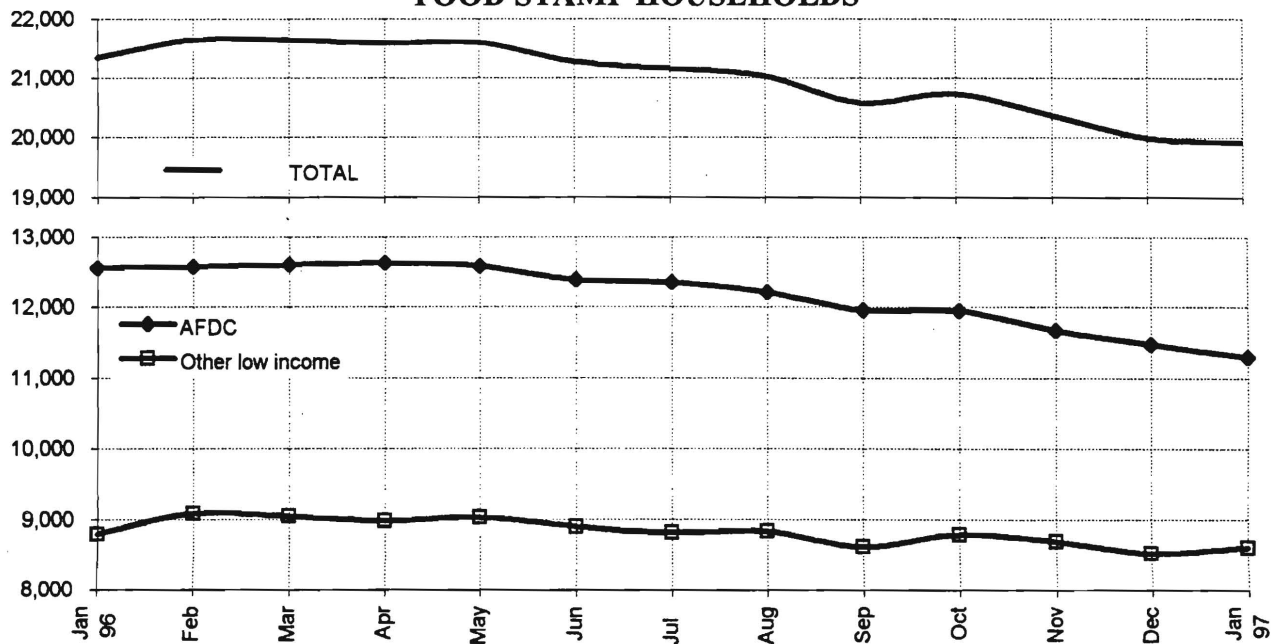


FOOD STAMP Program County Historical Series
Camden County
NUMBER OF ATP'S ISSUED TO HOUSEHOLDS, PERSONS
ADULTS AND CHILDREN AT THE END OF THE REPORT MONTH

		<u>HOUSEHOLDS</u>			<u>PERSONS</u>				
		AFDC	Other low income	TOTAL	TOTAL	AFDC	Other low income	Adults	Children
96	Jan	12,546	8,797	21,343	53,598	40,911	12,687	24,081	29,517
	Feb	12,565	9,082	21,647	54,194	41,038	13,156	24,439	29,755
	Mar	12,593	9,050	21,643	54,217	41,123	13,094	24,410	29,807
	Apr	12,617	8,977	21,594	53,998	41,088	12,910	24,296	29,702
	May	12,576	9,026	21,602	53,895	40,955	12,940	24,302	29,593
	Jun	12,378	8,895	21,273	53,105	40,277	12,828	23,916	29,189
	Jul	12,342	8,818	21,160	52,924	40,152	12,772	23,747	29,177
	Aug	12,203	8,830	21,033	52,597	39,764	12,833	23,580	29,017
	Sep	11,954	8,622	20,576	51,443	38,901	12,542	22,998	28,445
	Oct	11,945	8,788	20,733	51,714	38,907	12,807	23,192	28,522
	Nov	11,670	8,699	20,369	50,944	38,226	12,718	22,822	28,122
	Dec	11,469	8,528	19,997	50,317	37,766	12,551	22,498	27,819
97	Jan	11,299	8,615	19,914	50,037	37,464	12,573	22,500	27,537

Data is derived from NJ Division of Family Development's FAMIS report # FB-160.

Camden County
FOOD STAMP HOUSEHOLDS

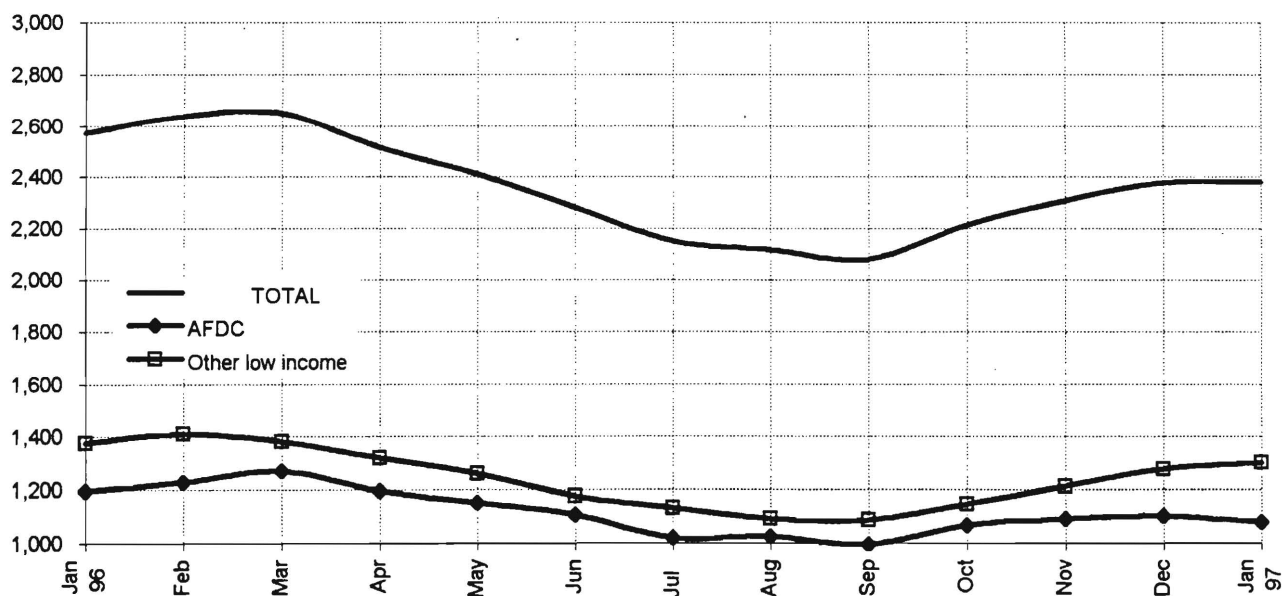


FOOD STAMP Program County Historical Series
Cape May County
NUMBER OF ATP'S ISSUED TO HOUSEHOLDS, PERSONS
ADULTS AND CHILDREN AT THE END OF THE REPORT MONTH

		<u>HOUSEHOLDS</u>			<u>PERSONS</u>				
		Other low		TOTAL	Other low		Adults	Children	
		AFDC	income		TOTAL	AFDC			
96	Jan	1,195	1,376	2,571	6,374	3,970	2,404	3,126	3,248
	Feb	1,228	1,410	2,638	6,561	4,091	2,470	3,227	3,334
	Mar	1,269	1,382	2,651	6,624	4,218	2,406	3,235	3,389
	Apr	1,195	1,320	2,515	6,262	4,001	2,261	3,059	3,203
	May	1,152	1,260	2,412	6,044	3,860	2,184	2,914	3,130
	Jun	1,107	1,176	2,283	5,763	3,722	2,041	2,747	3,016
	Jul	1,020	1,130	2,150	5,333	3,411	1,922	2,560	2,773
	Aug	1,025	1,092	2,117	5,340	3,485	1,855	2,519	2,821
	Sep	994	1,086	2,080	5,192	3,358	1,834	2,462	2,730
	Oct	1,067	1,147	2,214	5,519	3,589	1,930	2,632	2,887
	Nov	1,092	1,214	2,306	5,693	3,654	2,039	2,746	2,947
	Dec	1,101	1,277	2,378	5,902	3,725	2,177	2,862	3,040
97	Jan	1,078	1,303	2,381	5,872	3,666	2,206	2,885	2,987

Data is derived from NJ Division of Family Development's FAMIS report # FB-160.

Cape May County
FOOD STAMP HOUSEHOLDS

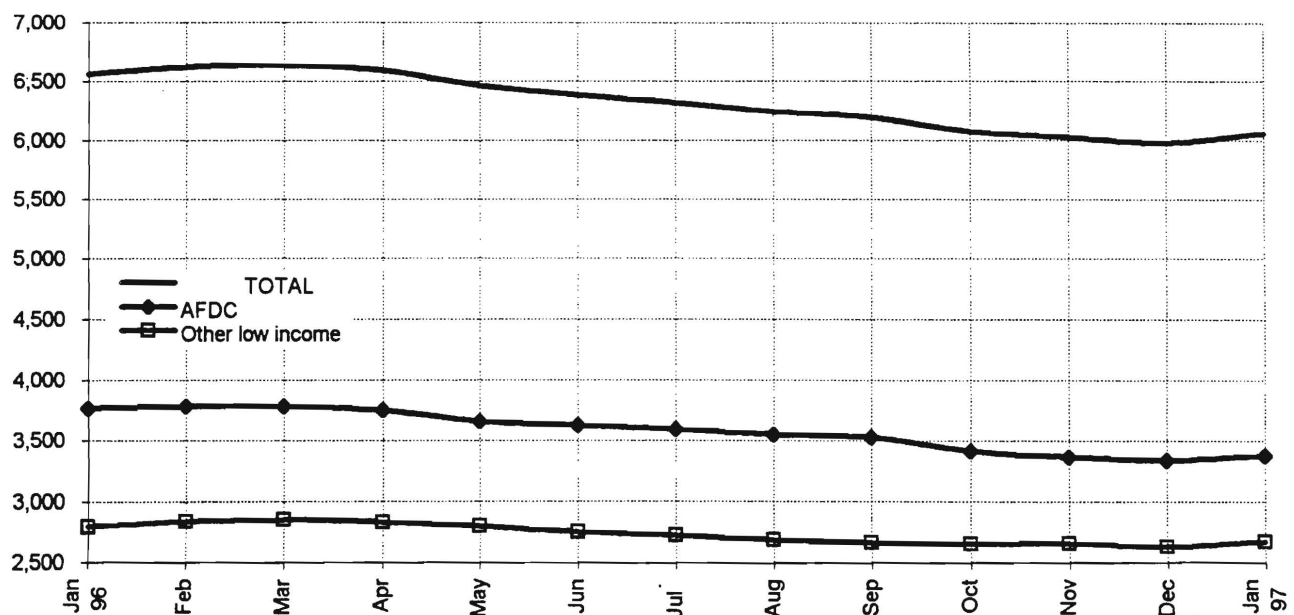


FOOD STAMP Program County Historical Series
Cumberland County
NUMBER OF ATP'S ISSUED TO HOUSEHOLDS, PERSONS
ADULTS AND CHILDREN AT THE END OF THE REPORT MONTH

<u>HOUSEHOLDS</u>				<u>PERSONS</u>				
		AFDC	Other low income	TOTAL	TOTAL	AFDC	Other low income	Adults Children
96	Jan	3,764	2,794	6,558	17,107	12,603	4,504	7,816 9,291
	Feb	3,780	2,837	6,617	17,276	12,669	4,607	7,900 9,376
	Mar	3,783	2,853	6,636	17,218	12,647	4,571	7,910 9,308
	Apr	3,752	2,836	6,588	17,103	12,565	4,538	7,822 9,281
	May	3,659	2,801	6,460	16,686	12,227	4,459	7,657 9,029
	Jun	3,628	2,751	6,379	16,451	12,051	4,400	7,543 8,908
	Jul	3,592	2,726	6,318	16,284	11,909	4,375	7,465 8,819
	Aug	3,549	2,690	6,239	16,113	11,763	4,350	7,366 8,747
	Sep	3,527	2,667	6,194	16,006	11,718	4,288	7,287 8,719
	Oct	3,418	2,654	6,072	15,883	11,561	4,322	7,208 8,675
	Nov	3,365	2,659	6,024	15,809	11,467	4,342	7,171 8,638
	Dec	3,341	2,637	5,978	15,749	11,456	4,293	7,090 8,659
97	Jan	3,376	2,679	6,055	15,922	11,559	4,363	7,162 8,760

Data is derived from NJ Division of Family Development's FAMIS report # FB-160.

Cumberland County
FOOD STAMP HOUSEHOLDS

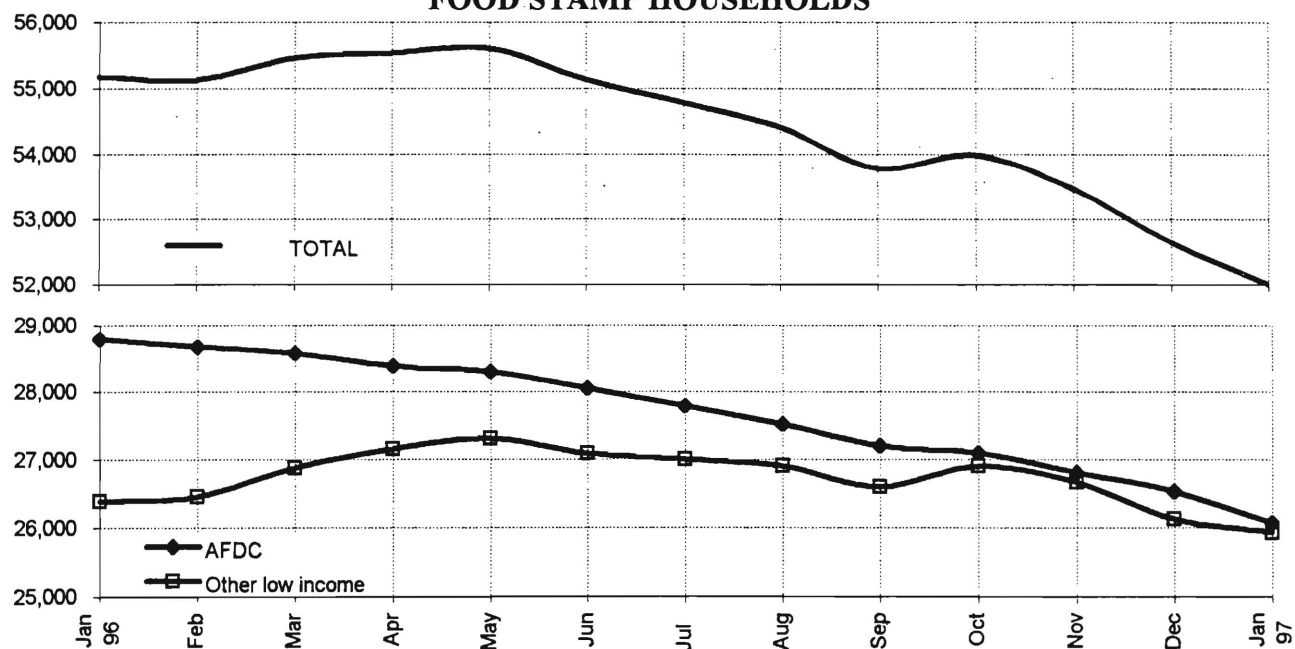


FOOD STAMP Program County Historical Series
Essex County
NUMBER OF ATP'S ISSUED TO HOUSEHOLDS, PERSONS
ADULTS AND CHILDREN AT THE END OF THE REPORT MONTH

<u>HOUSEHOLDS</u>					<u>PERSONS</u>				
Other low					Other low				
		AFDC	income	TOTAL	TOTAL	AFDC	income	Adults	Children
96	Jan	28,788	26,384	55,172	126,811	89,034	37,777	59,077	67,734
	Feb	28,676	26,447	55,123	126,517	88,743	37,774	59,012	67,505
	Mar	28,578	26,872	55,450	126,771	88,402	38,369	59,401	67,370
	Apr	28,388	27,148	55,536	126,702	87,844	38,858	59,584	67,118
	May	28,301	27,300	55,601	126,662	87,551	39,111	59,668	66,994
	Jun	28,053	27,080	55,133	125,691	86,718	38,973	59,148	66,543
	Jul	27,780	26,996	54,776	124,880	85,951	38,929	58,748	66,132
	Aug	27,514	26,898	54,412	124,124	85,237	38,887	58,370	65,754
	Sep	27,193	26,592	53,785	122,611	84,249	38,362	57,691	64,920
	Oct	27,095	26,899	53,994	122,820	84,161	38,659	57,869	64,951
	Nov	26,804	26,655	53,459	121,610	83,422	38,188	57,324	64,286
	Dec	26,525	26,118	52,643	119,989	82,587	37,402	56,430	63,559
97	Jan	26,067	25,935	52,002	118,530	81,496	37,034	55,751	62,779

Data is derived from NJ Division of Family Development's FAMIS report # FB-160.

Essex County
FOOD STAMP HOUSEHOLDS

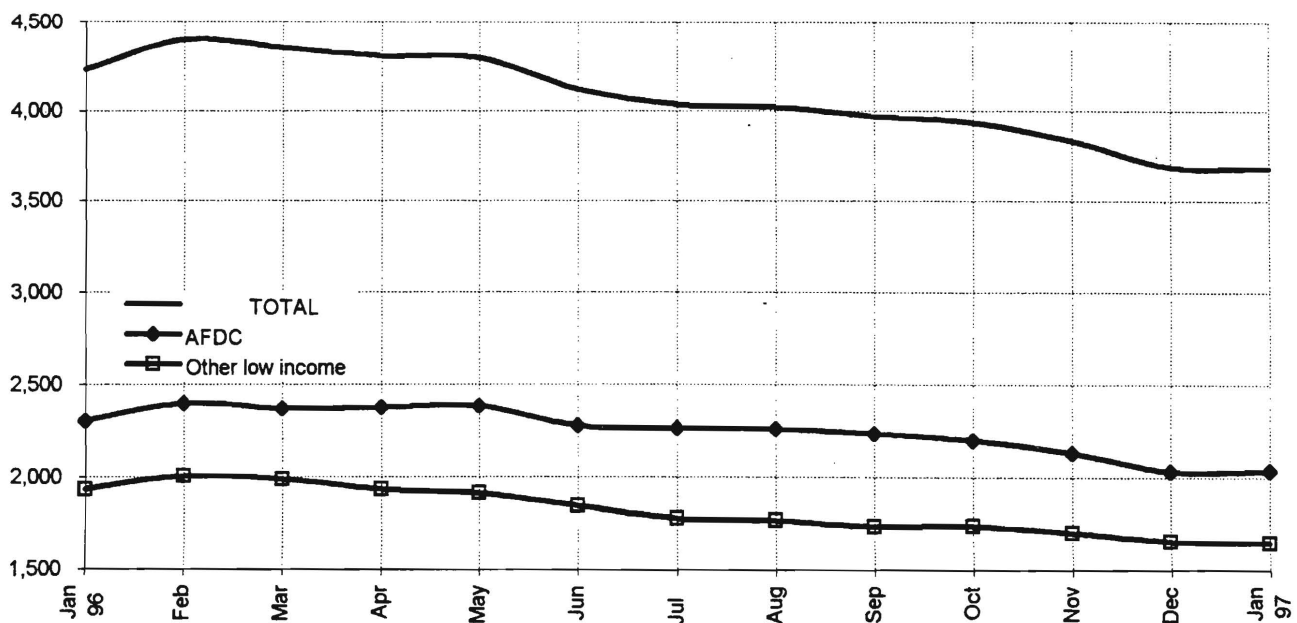


FOOD STAMP Program County Historical Series
Gloucester County
NUMBER OF ATP'S ISSUED TO HOUSEHOLDS, PERSONS
ADULTS AND CHILDREN AT THE END OF THE REPORT MONTH

	<u>HOUSEHOLDS</u>			<u>PERSONS</u>				
	AFDC	Other low income	TOTAL	TOTAL	AFDC	Other low income	Adults	Children
96 Jan	2,300	1,932	4,232	10,335	7,073	3,262	4,888	5,447
Feb	2,397	2,002	4,399	10,783	7,392	3,391	5,116	5,667
Mar	2,367	1,986	4,353	10,632	7,302	3,330	5,061	5,571
Apr	2,375	1,931	4,306	10,592	7,340	3,252	5,009	5,583
May	2,383	1,911	4,294	10,520	7,377	3,143	4,966	5,554
Jun	2,276	1,844	4,120	10,062	7,054	3,008	4,755	5,307
Jul	2,262	1,775	4,037	9,931	7,059	2,872	4,646	5,285
Aug	2,258	1,764	4,022	9,892	7,063	2,829	4,612	5,280
Sep	2,234	1,734	3,968	9,718	6,963	2,755	4,536	5,182
Oct	2,198	1,736	3,934	9,640	6,861	2,779	4,496	5,144
Nov	2,132	1,702	3,834	9,431	6,724	2,707	4,384	5,047
Dec	2,032	1,657	3,689	9,082	6,427	2,655	4,221	4,861
97 Jan	2,034	1,648	3,682	9,087	6,425	2,662	4,232	4,855

Data is derived from NJ Division of Family Development's FAMIS report # FB-160.

Gloucester County
FOOD STAMP HOUSEHOLDS

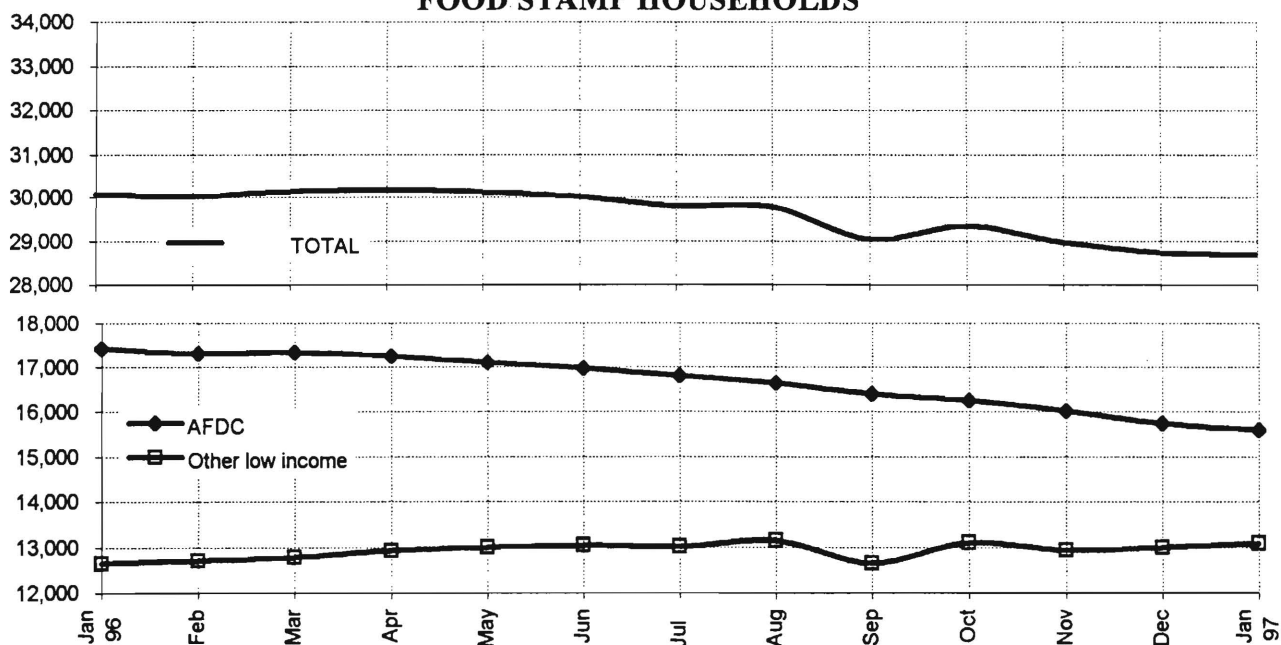


FOOD STAMP Program County Historical Series
Hudson County
NUMBER OF ATP'S ISSUED TO HOUSEHOLDS, PERSONS
ADULTS AND CHILDREN AT THE END OF THE REPORT MONTH

<u>HOUSEHOLDS</u>				<u>PERSONS</u>					
Other low				Other low					
		AFDC	income	TOTAL	TOTAL	AFDC	income	Adults	Children
96	Jan	17,420	12,654	30,074	72,450	52,869	19,581	32,883	39,567
	Feb	17,305	12,712	30,017	72,164	52,490	19,674	32,730	39,434
	Mar	17,335	12,791	30,126	72,363	52,541	19,822	32,831	39,532
	Apr	17,238	12,936	30,174	72,474	52,420	20,054	32,887	39,587
	May	17,106	13,005	30,111	72,295	52,110	20,185	32,891	39,404
	Jun	16,965	13,048	30,013	72,046	51,717	20,329	32,784	39,262
	Jul	16,787	13,012	29,799	71,401	51,203	20,198	32,540	38,861
	Aug	16,638	13,145	29,783	71,146	50,854	20,292	32,516	38,630
	Sep	16,390	12,651	29,041	69,745	50,111	19,634	31,707	38,038
	Oct	16,236	13,105	29,341	70,068	49,734	20,334	32,039	38,029
	Nov	16,013	12,949	28,962	69,304	49,210	20,094	31,606	37,698
	Dec	15,730	13,002	28,732	68,525	48,353	20,172	31,368	37,157
97	Jan	15,592	13,087	28,679	68,368	48,086	20,282	31,300	37,068

Data is derived from NJ Division of Family Development's FAMIS report # FB-160.

Hudson County
FOOD STAMP HOUSEHOLDS

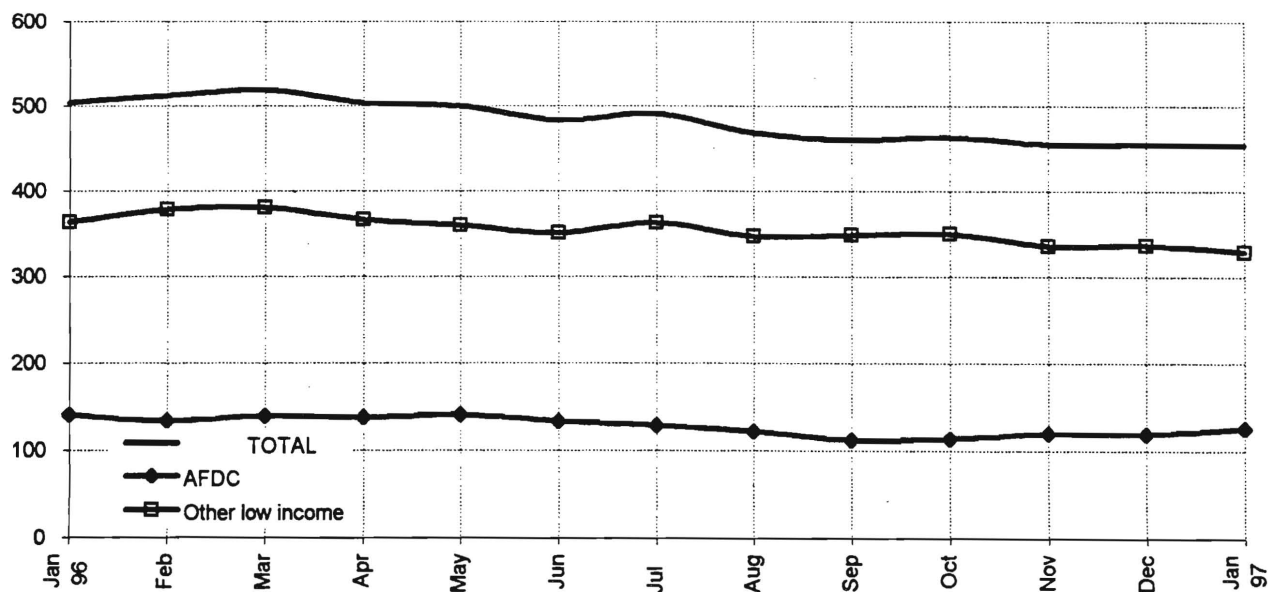


FOOD STAMP Program County Historical Series
Hunterdon County
NUMBER OF ATP'S ISSUED TO HOUSEHOLDS, PERSONS
ADULTS AND CHILDREN AT THE END OF THE REPORT MONTH

<u>HOUSEHOLDS</u>				<u>PERSONS</u>					
		Other low		TOTAL			Other low		Children
		AFDC	income		TOTAL	AFDC	income	Adults	
96	Jan	141	363	504	1,025	418	607	584	441
	Feb	134	378	512	1,036	410	626	592	444
	Mar	139	380	519	1,039	421	618	596	443
	Apr	138	366	504	997	418	579	571	426
	May	141	359	500	995	425	570	566	429
	Jun	133	350	483	959	388	571	549	410
	Jul	129	362	491	948	382	566	548	400
	Aug	122	346	468	910	372	538	525	385
	Sep	112	348	460	891	348	543	520	371
	Oct	114	349	463	911	350	561	527	384
	Nov	120	335	455	884	372	512	518	366
	Dec	119	336	455	898	366	532	525	373
97	Jan	126	328	454	893	385	508	524	369

Data is derived from NJ Division of Family Development's FAMIS report # FB-160.

Hunterdon County
FOOD STAMP HOUSEHOLDS



FOOD STAMP Program County Historical Series**Mercer County****NUMBER OF ATP'S ISSUED TO HOUSEHOLDS, PERSONS
ADULTS AND CHILDREN AT THE END OF THE REPORT MONTH**

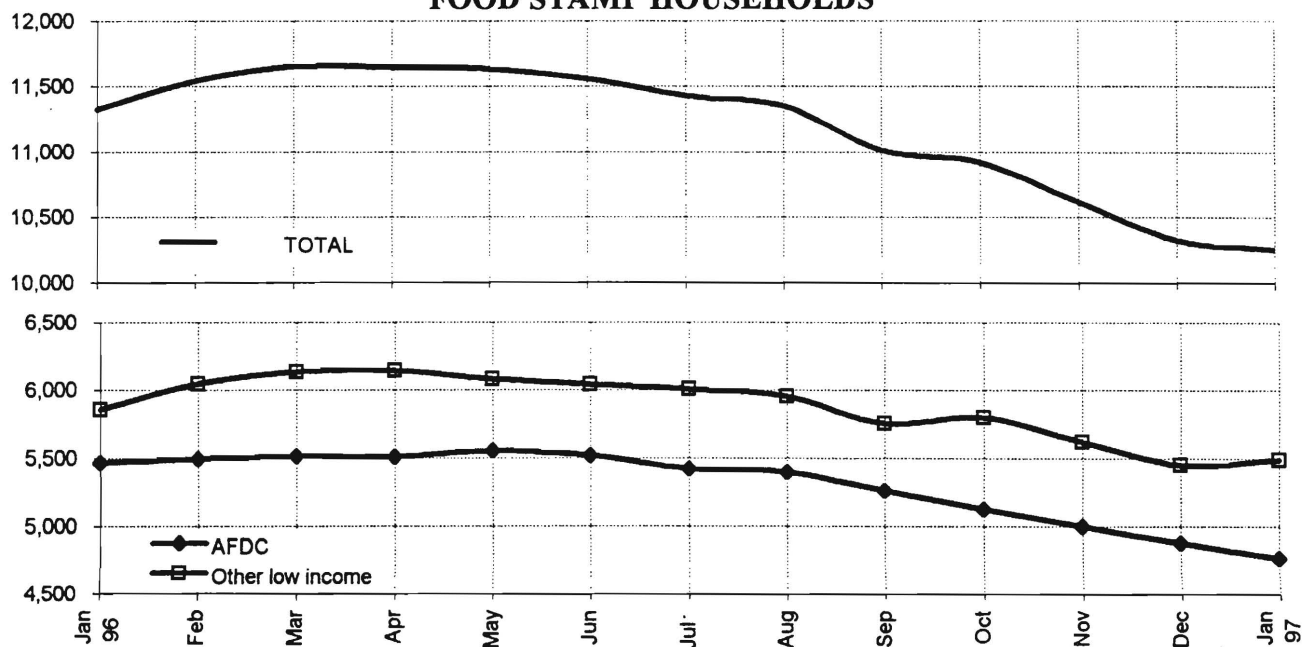
<u>HOUSEHOLDS</u>					<u>PERSONS</u>				
Other low					Other low				
		AFDC	income	TOTAL	TOTAL	AFDC	income	Adults	Children
96	Jan	4,625	4,470	9,095	19,910	14,117	5,793	9,416	10,494
	Feb	4,645	4,570	9,215	20,136	14,191	5,945	9,549	10,587
	Mar	4,622	4,615	9,237	20,051	14,119	5,932	9,572	10,479
	Apr	4,580	4,570	9,150	19,873	13,959	5,914	9,506	10,367
	May	4,594	4,619	9,213	20,008	14,022	5,986	9,569	10,439
	Jun	4,508	4,497	9,005	19,620	13,793	5,827	9,358	10,262
	Jul	4,494	4,513	9,007	19,652	13,787	5,865	9,354	10,298
	Aug	4,444	4,471	8,915	19,444	13,617	5,827	9,235	10,209
	Sep	4,374	4,403	8,777	19,194	13,397	5,797	9,093	10,101
	Oct	4,349	4,487	8,836	19,308	13,351	5,957	9,173	10,135
	Nov	4,269	4,452	8,721	19,096	13,162	5,934	9,086	10,010
	Dec	4,100	4,391	8,491	18,577	12,778	5,799	8,836	9,741
97	Jan	4,128	4,422	8,550	18,775	12,912	5,863	8,923	9,852

FOOD STAMP Program County Historical Series
Middlesex County
NUMBER OF ATP'S ISSUED TO HOUSEHOLDS, PERSONS
ADULTS AND CHILDREN AT THE END OF THE REPORT MONTH

<u>HOUSEHOLDS</u>					<u>PERSONS</u>				
		Other low					Other low		
		AFDC	income	TOTAL	TOTAL	AFDC	income	Adults	Children
96	Jan	5,464	5,857	11,321	25,425	16,450	8,975	12,607	12,818
	Feb	5,493	6,045	11,538	25,860	16,510	9,350	12,890	12,970
	Mar	5,514	6,134	11,648	25,956	16,525	9,431	12,975	12,981
	Apr	5,505	6,142	11,647	25,929	16,435	9,494	12,983	12,946
	May	5,551	6,079	11,630	25,878	16,518	9,360	12,940	12,938
	Jun	5,517	6,040	11,557	25,744	16,501	9,243	12,807	12,937
	Jul	5,421	6,004	11,425	25,356	16,267	9,089	12,654	12,702
	Aug	5,394	5,955	11,349	25,106	16,127	8,979	12,567	12,539
	Sep	5,259	5,754	11,013	24,381	15,765	8,616	12,189	12,192
	Oct	5,123	5,797	10,920	24,027	15,374	8,653	12,034	11,993
	Nov	4,999	5,617	10,616	23,396	15,055	8,341	11,709	11,687
	Dec	4,880	5,447	10,327	22,855	14,758	8,097	11,346	11,509
97	Jan	4,766	5,486	10,252	22,541	14,461	8,080	11,248	11,293

Data is derived from NJ Division of Family Development's FAMIS report # FB-160.

Middlesex County
FOOD STAMP HOUSEHOLDS

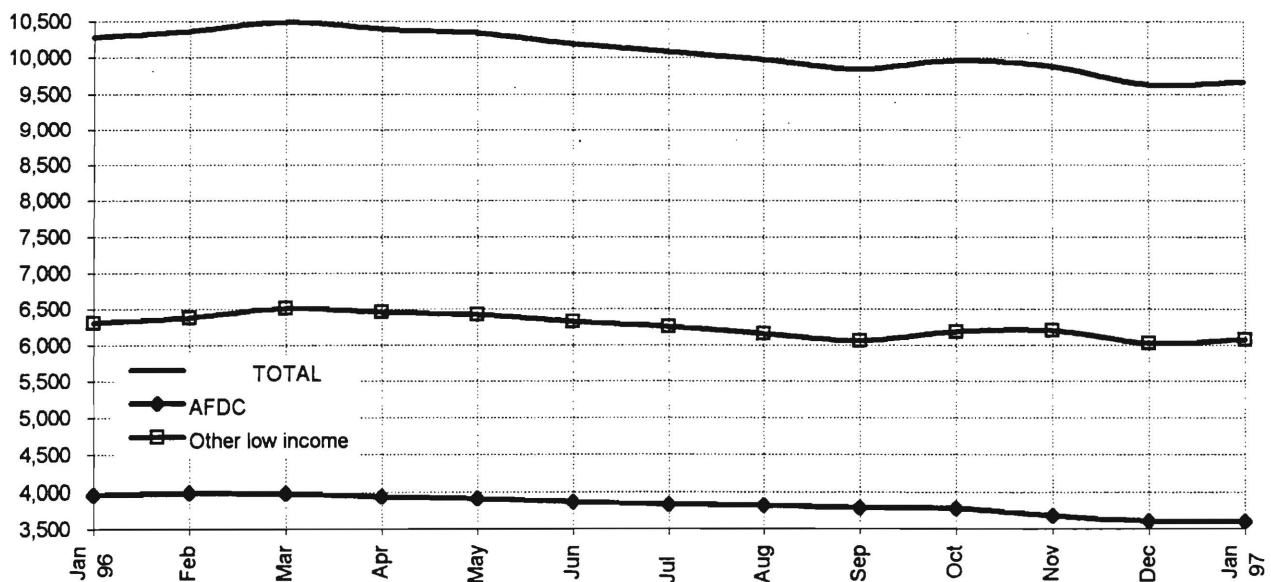


FOOD STAMP Program County Historical Series
Monmouth County
NUMBER OF ATP'S ISSUED TO HOUSEHOLDS, PERSONS
ADULTS AND CHILDREN AT THE END OF THE REPORT MONTH

<u>HOUSEHOLDS</u>				<u>PERSONS</u>				
		Other low		TOTAL	Other low		Adults	Children
		AFDC	income		TOTAL	AFDC		
96	Jan	3,966	6,310	10,276	22,194	12,562	9,632	11,498
	Feb	3,985	6,377	10,362	22,428	12,642	9,786	11,630
	Mar	3,980	6,513	10,493	22,664	12,660	10,004	11,797
	Apr	3,937	6,459	10,396	22,468	12,527	9,941	11,697
	May	3,913	6,423	10,336	22,309	12,422	9,887	11,574
	Jun	3,867	6,321	10,188	21,959	12,285	9,674	11,380
	Jul	3,828	6,254	10,082	21,637	12,151	9,486	11,250
	Aug	3,822	6,152	9,974	21,394	12,100	9,294	11,082
	Sep	3,782	6,062	9,844	21,133	11,982	9,151	10,923
	Oct	3,772	6,185	9,957	21,254	11,968	9,286	11,032
	Nov	3,679	6,198	9,877	21,010	11,710	9,300	10,951
	Dec	3,610	6,020	9,630	20,513	11,515	8,998	10,685
97	Jan	3,596	6,073	9,669	20,668	11,514	9,154	10,752

Data is derived from NJ Division of Family Development's FAMIS report # FB-160.

Monmouth County
FOOD STAMP HOUSEHOLDS

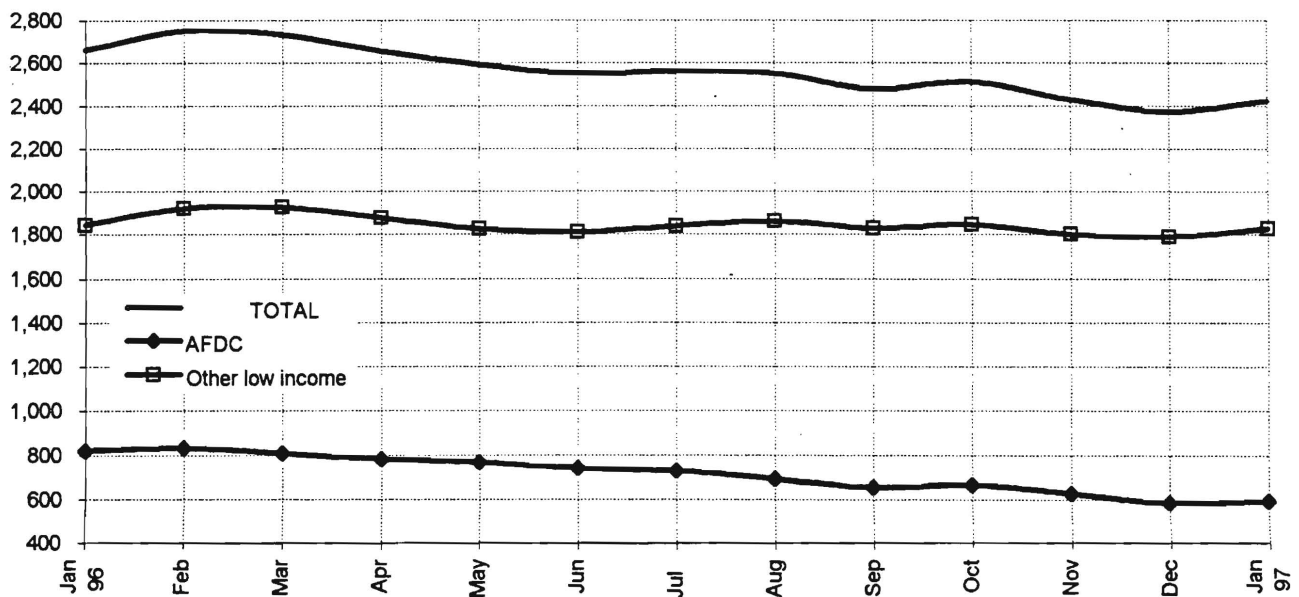


FOOD STAMP Program County Historical Series
Morris County
NUMBER OF ATP'S ISSUED TO HOUSEHOLDS, PERSONS
ADULTS AND CHILDREN AT THE END OF THE REPORT MONTH

<u>HOUSEHOLDS</u>					<u>PERSONS</u>				
Other low					Other low				
		AFDC	income	TOTAL	TOTAL	AFDC	income	Adults	Children
96	Jan	820	1,841	2,661	5,336	2,391	2,945	3,087	2,249
	Feb	831	1,919	2,750	5,503	2,446	3,057	3,196	2,307
	Mar	807	1,925	2,732	5,453	2,364	3,089	3,184	2,269
	Apr	780	1,874	2,654	5,280	2,303	2,977	3,100	2,180
	May	766	1,826	2,592	5,154	2,259	2,895	3,025	2,129
	Jun	740	1,809	2,549	5,050	2,178	2,872	2,969	2,081
	Jul	727	1,836	2,563	5,036	2,160	2,876	2,970	2,066
	Aug	691	1,859	2,550	4,938	2,027	2,911	2,938	2,000
	Sep	652	1,828	2,480	4,788	1,917	2,871	2,860	1,928
	Oct	666	1,846	2,512	4,886	1,988	2,898	2,900	1,986
	Nov	626	1,801	2,427	4,678	1,883	2,795	2,800	1,878
	Dec	584	1,788	2,372	4,482	1,753	2,729	2,724	1,758
97	Jan	594	1,828	2,422	4,609	1,791	2,818	2,780	1,829

Data is derived from NJ Division of Family Development's FAMIS report # FB-160.

Morris County
FOOD STAMP HOUSEHOLDS

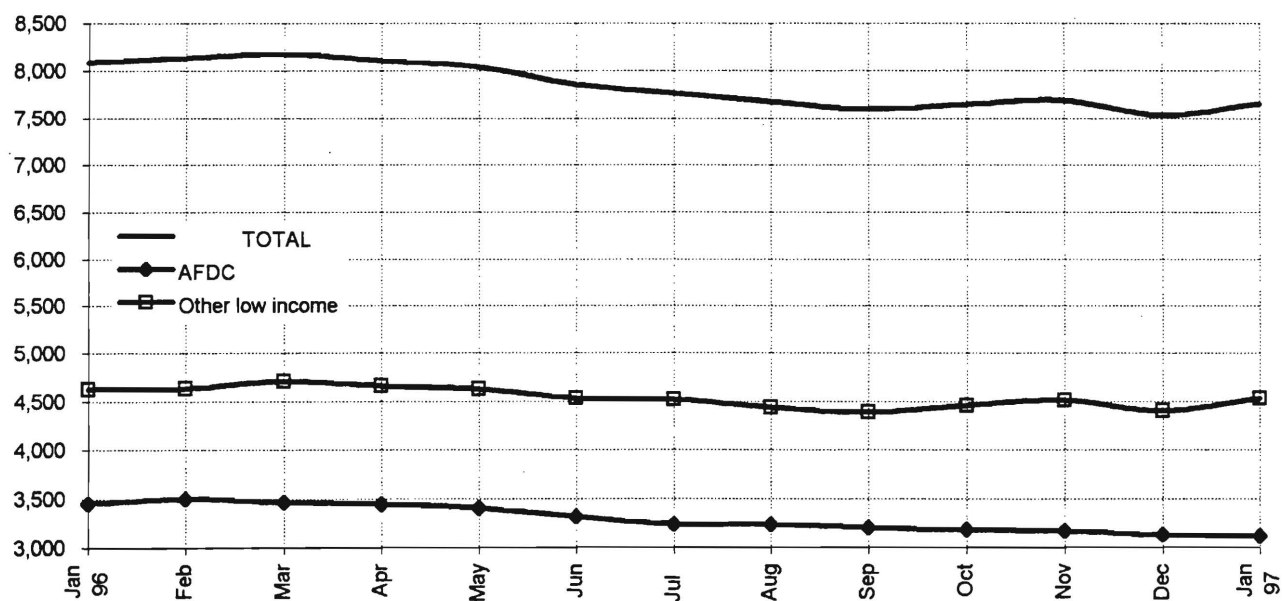


FOOD STAMP Program County Historical Series
Ocean County
NUMBER OF ATP'S ISSUED TO HOUSEHOLDS, PERSONS
ADULTS AND CHILDREN AT THE END OF THE REPORT MONTH

		<u>HOUSEHOLDS</u>			<u>PERSONS</u>				
		AFDC	Other low income	TOTAL	TOTAL	AFDC	Other low income	Adults	Children
96	Jan	3,456	4,629	8,085	20,198	11,261	8,937	9,574	10,624
	Feb	3,498	4,637	8,135	20,268	11,401	8,867	9,647	10,621
	Mar	3,465	4,713	8,178	20,409	11,327	9,082	9,677	10,732
	Apr	3,445	4,664	8,109	20,243	11,242	9,001	9,584	10,659
	May	3,408	4,631	8,039	20,166	11,160	9,006	9,528	10,638
	Jun	3,318	4,537	7,855	19,729	10,885	8,844	9,298	10,431
	Jul	3,239	4,523	7,762	19,483	10,604	8,879	9,156	10,327
	Aug	3,236	4,440	7,676	19,211	10,587	8,624	9,027	10,184
	Sep	3,203	4,395	7,598	19,026	10,462	8,564	8,920	10,106
	Oct	3,183	4,462	7,645	19,215	10,444	8,771	9,012	10,203
	Nov	3,172	4,515	7,687	19,268	10,474	8,794	9,049	10,219
	Dec	3,129	4,405	7,534	19,070	10,460	8,610	8,908	10,162
97	Jan	3,116	4,535	7,651	19,317	10,477	8,840	9,047	10,270

Data is derived from NJ Division of Family Development's FAMIS report # FB-160.

Ocean County
FOOD STAMP HOUSEHOLDS

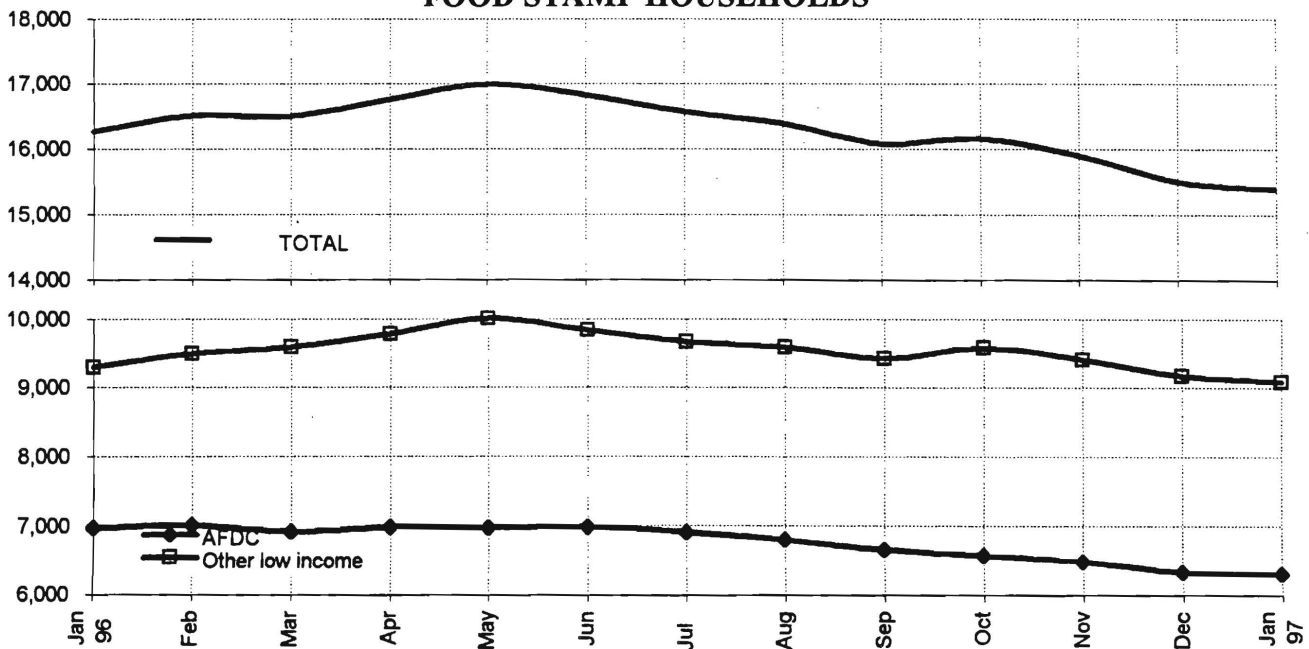


FOOD STAMP Program County Historical Series
Passaic County
NUMBER OF ATP'S ISSUED TO HOUSEHOLDS, PERSONS
ADULTS AND CHILDREN AT THE END OF THE REPORT MONTH

		<u>HOUSEHOLDS</u>			<u>PERSONS</u>				
		AFDC	Other low income	TOTAL	TOTAL	AFDC	Other low income	Adults	Children
96	Jan	6,975	9,293	16,268	37,864	22,863	15,001	18,247	19,617
	Feb	7,014	9,495	16,509	38,281	22,996	15,285	18,537	19,744
	Mar	6,912	9,587	16,499	37,988	22,624	15,364	18,457	19,531
	Apr	6,978	9,777	16,755	38,619	22,851	15,768	18,794	19,825
	May	6,976	10,009	16,985	39,211	22,911	16,300	19,043	20,168
	Jun	6,978	9,838	16,816	38,987	22,912	16,075	18,854	20,133
	Jul	6,902	9,667	16,569	38,447	22,704	15,743	18,591	19,856
	Aug	6,801	9,593	16,394	38,025	22,390	15,635	18,401	19,624
	Sep	6,654	9,425	16,079	37,236	21,926	15,310	17,983	19,253
	Oct	6,576	9,583	16,159	37,247	21,707	15,540	18,042	19,205
	Nov	6,488	9,414	15,902	36,740	21,521	15,219	17,722	19,018
	Dec	6,333	9,174	15,507	35,962	21,135	14,827	17,290	18,672
97	Jan	6,301	9,089	15,390	35,751	21,129	14,622	17,154	18,597

Data is derived from NJ Division of Family Development's FAMIS report # FB-160.

Passaic County
FOOD STAMP HOUSEHOLDS

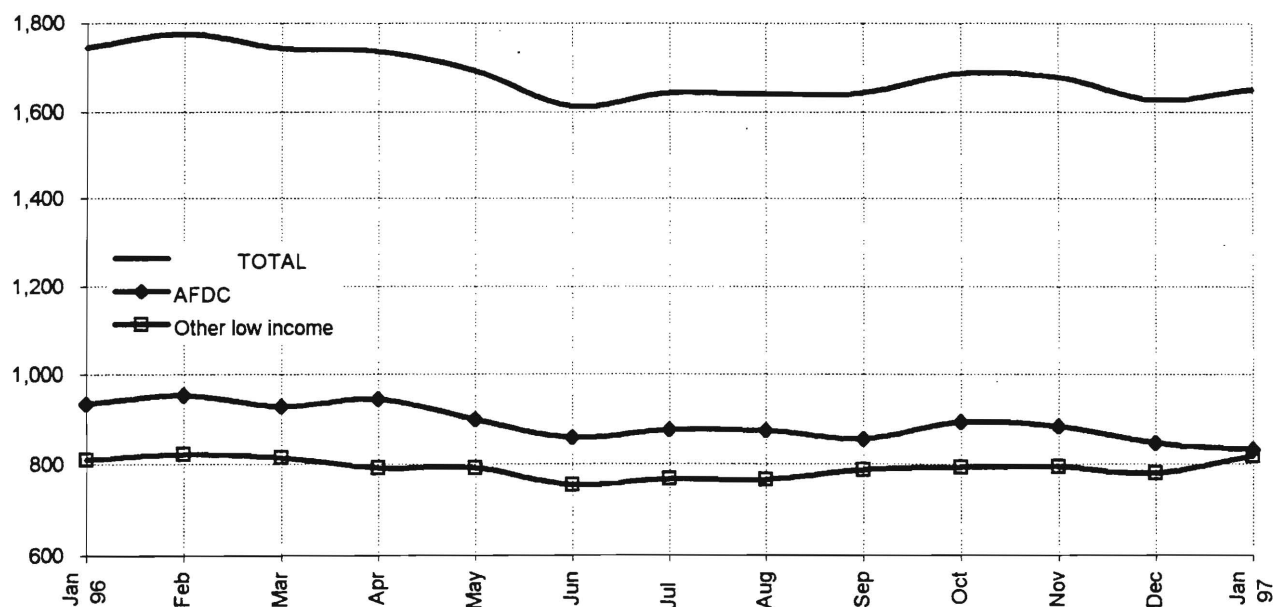


FOOD STAMP Program County Historical Series
Salem County
NUMBER OF ATP'S ISSUED TO HOUSEHOLDS, PERSONS
ADULTS AND CHILDREN AT THE END OF THE REPORT MONTH

<u>HOUSEHOLDS</u>				<u>PERSONS</u>				
		Other low income		TOTAL	Other low income		Adults	Children
		AFDC			TOTAL	AFDC		
96	Jan	934	811	1,745	4,356	3,047	1,309	2,359
	Feb	953	823	1,776	4,435	3,118	1,317	2,407
	Mar	929	815	1,744	4,282	3,001	1,281	2,317
	Apr	944	792	1,736	4,293	3,055	1,238	2,322
	May	900	792	1,692	4,135	2,882	1,253	2,220
	Jun	859	754	1,613	3,957	2,771	1,186	2,139
	Jul	876	767	1,643	4,076	2,830	1,246	2,216
	Aug	875	765	1,640	4,057	2,824	1,233	2,201
	Sep	856	787	1,643	4,081	2,784	1,297	2,212
	Oct	894	793	1,687	4,243	2,935	1,308	2,313
	Nov	883	795	1,678	4,197	2,881	1,316	2,285
	Dec	847	780	1,627	4,077	2,803	1,274	2,229
97	Jan	832	818	1,650	4,103	2,747	1,356	2,219

Data is derived from NJ Division of Family Development's FAMIS report # FB-160.

Salem County
FOOD STAMP HOUSEHOLDS

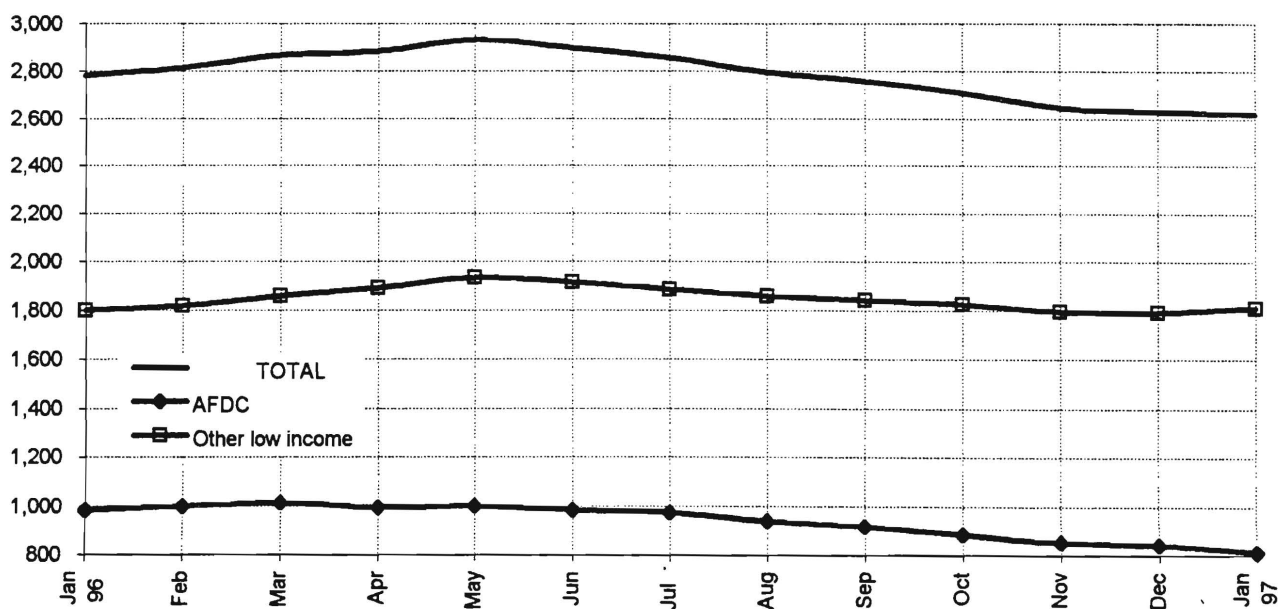


FOOD STAMP Program County Historical Series
Somerset County
NUMBER OF ATP'S ISSUED TO HOUSEHOLDS, PERSONS
ADULTS AND CHILDREN AT THE END OF THE REPORT MONTH

<u>HOUSEHOLDS</u>				<u>PERSONS</u>				
		AFDC	Other low income	TOTAL	TOTAL	AFDC	Other low income	Adults Children
96	Jan	984	1,798	2,782	5,469	2,823	2,646	2,979 2,490
	Feb	998	1,817	2,815	5,548	2,872	2,676	3,030 2,518
	Mar	1,011	1,858	2,869	5,711	2,923	2,788	3,102 2,609
	Apr	994	1,890	2,884	5,718	2,889	2,829	3,135 2,583
	May	999	1,933	2,932	5,769	2,902	2,867	3,177 2,592
	Jun	982	1,915	2,897	5,665	2,861	2,804	3,128 2,537
	Jul	972	1,886	2,858	5,604	2,836	2,768	3,103 2,501
	Aug	937	1,858	2,795	5,388	2,728	2,660	3,020 2,368
	Sep	915	1,842	2,757	5,286	2,674	2,612	2,977 2,309
	Oct	884	1,827	2,711	5,221	2,607	2,614	2,921 2,300
	Nov	852	1,797	2,649	5,054	2,516	2,538	2,854 2,200
	Dec	839	1,793	2,632	5,084	2,497	2,587	2,844 2,240
97	Jan	810	1,812	2,622	4,997	2,419	2,578	2,807 2,190

Data is derived from NJ Division of Family Development's FAMIS report # FB-160.

Somerset County
FOOD STAMP HOUSEHOLDS

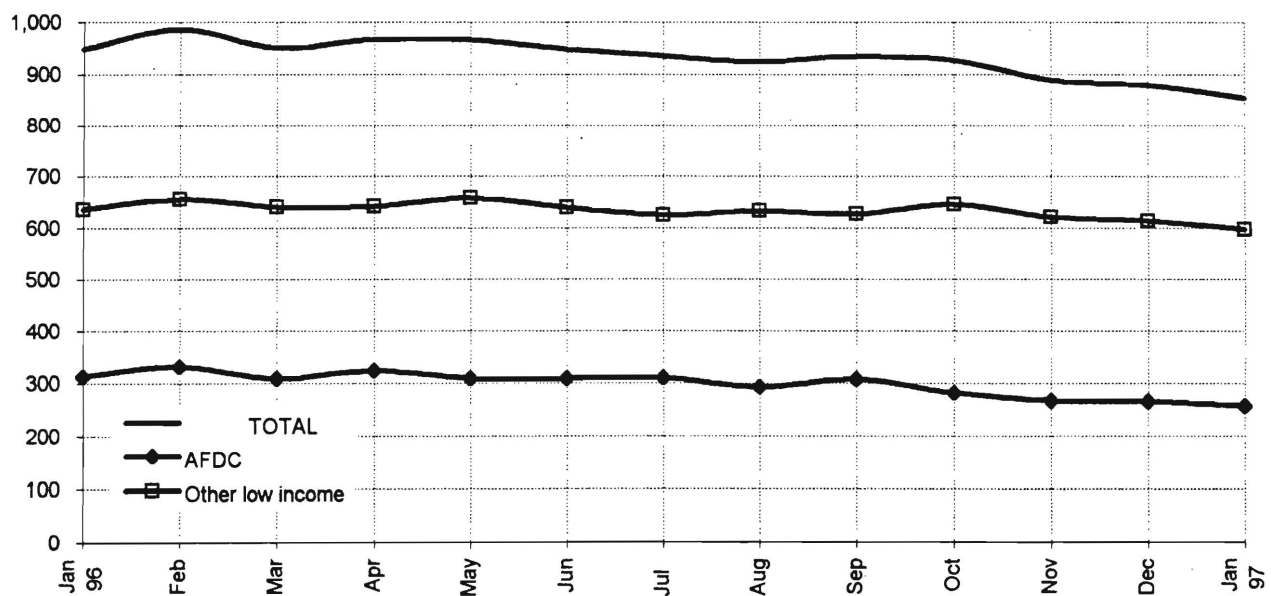


FOOD STAMP Program County Historical Series
Sussex County
NUMBER OF ATP'S ISSUED TO HOUSEHOLDS, PERSONS
ADULTS AND CHILDREN AT THE END OF THE REPORT MONTH

<u>HOUSEHOLDS</u>					<u>PERSONS</u>				
Other low					Other low				
AFDC income TOTAL					TOTAL AFDC income Adults Children				
96	Jan	312	636	948	2,187	963	1,224	1,171	1,016
	Feb	331	655	986	2,316	1,024	1,292	1,228	1,088
	Mar	309	641	950	2,181	948	1,233	1,170	1,011
	Apr	324	642	966	2,191	975	1,216	1,181	1,010
	May	308	658	966	2,188	920	1,268	1,170	1,018
	Jun	309	639	948	2,100	908	1,192	1,133	967
	Jul	310	625	935	2,058	919	1,139	1,105	953
	Aug	292	633	925	2,036	861	1,175	1,096	940
	Sep	307	627	934	2,053	900	1,153	1,111	942
	Oct	281	646	927	2,046	842	1,204	1,110	936
	Nov	267	621	888	1,949	807	1,142	1,069	880
	Dec	265	613	878	1,934	802	1,132	1,053	881
97	Jan	257	597	854	1,869	782	1,087	1,024	845

Data is derived from NJ Division of Family Development's FAMIS report # FB-160.

Sussex County
FOOD STAMP HOUSEHOLDS

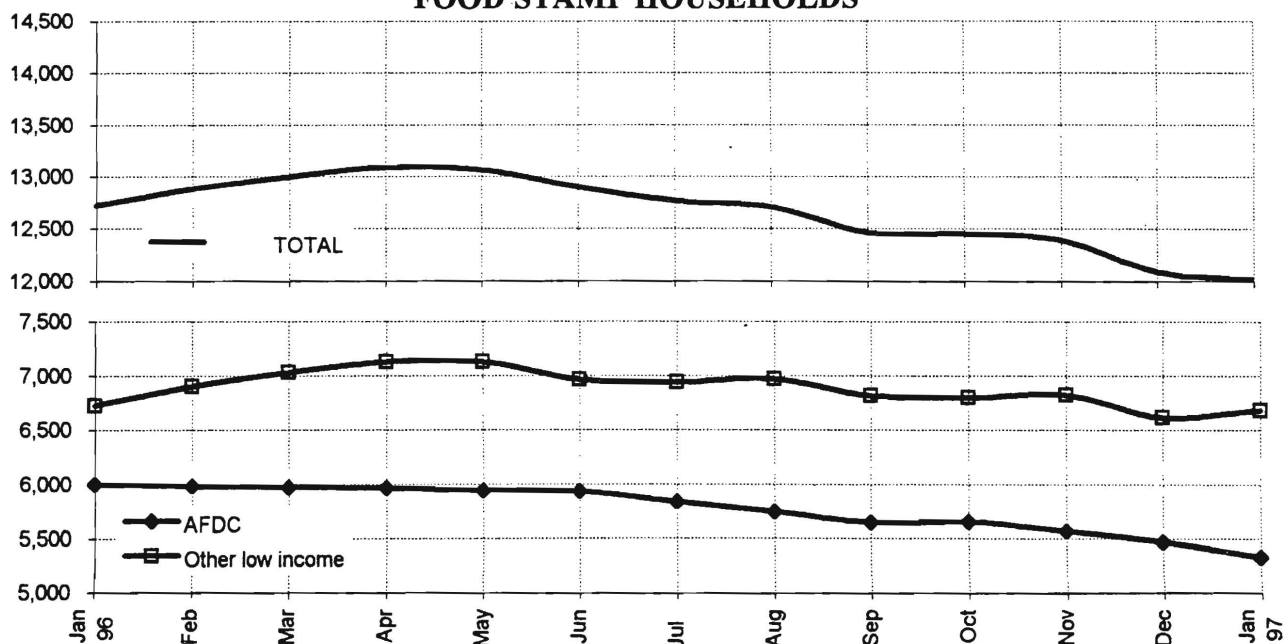


FOOD STAMP Program County Historical Series
Union County
NUMBER OF ATP'S ISSUED TO HOUSEHOLDS, PERSONS
ADULTS AND CHILDREN AT THE END OF THE REPORT MONTH

HOUSEHOLDS				PERSONS				
Other low				Other low				
	AFDC	income	TOTAL	TOTAL	AFDC	income	Adults	Children
96 Jan	5,997	6,725	12,722	29,007	19,084	9,923	14,250	14,757
Feb	5,978	6,900	12,878	29,113	18,959	10,154	14,412	14,701
Mar	5,967	7,030	12,997	29,400	18,984	10,416	14,562	14,838
Apr	5,964	7,125	13,089	29,476	18,893	10,583	14,662	14,814
May	5,938	7,124	13,062	29,456	18,827	10,629	14,625	14,831
Jun	5,933	6,963	12,896	29,254	18,860	10,394	14,432	14,822
Jul	5,833	6,940	12,773	28,802	18,508	10,294	14,252	14,550
Aug	5,746	6,965	12,711	28,660	18,284	10,376	14,209	14,451
Sep	5,649	6,814	12,463	28,073	17,935	10,138	13,920	14,153
Oct	5,655	6,799	12,454	28,145	18,040	10,105	13,922	14,223
Nov	5,571	6,823	12,394	27,923	17,842	10,081	13,820	14,103
Dec	5,474	6,618	12,092	27,325	17,590	9,735	13,484	13,841
97 Jan	5,333	6,684	12,017	26,951	17,223	9,728	13,365	13,586

Data is derived from NJ Division of Family Development's FAMIS report # FB-160.

Union County
FOOD STAMP HOUSEHOLDS



FOOD STAMP Program County Historical Series
Warren County
NUMBER OF ATP'S ISSUED TO HOUSEHOLDS, PERSONS
ADULTS AND CHILDREN AT THE END OF THE REPORT MONTH

<u>HOUSEHOLDS</u>				<u>PERSONS</u>				
	AFDC	Other low income	TOTAL	TOTAL	AFDC	Other low income	Adults	Children
96 Jan	589	975	1,564	3,611	1,837	1,774	1,898	1,713
Feb	602	1,062	1,664	3,854	1,851	2,003	2,020	1,834
Mar	574	1,060	1,634	3,736	1,770	1,966	1,971	1,765
Apr	568	1,017	1,585	3,657	1,751	1,906	1,901	1,756
May	570	1,052	1,622	3,710	1,762	1,948	1,944	1,766
Jun	562	1,016	1,578	3,619	1,747	1,872	1,893	1,726
Jul	566	1,006	1,572	3,574	1,765	1,809	1,893	1,681
Aug	561	990	1,551	3,528	1,749	1,779	1,865	1,663
Sep	548	972	1,520	3,427	1,710	1,717	1,825	1,602
Oct	551	993	1,544	3,535	1,726	1,809	1,859	1,676
Nov	547	998	1,545	3,508	1,727	1,781	1,852	1,656
Dec	528	1,012	1,540	3,513	1,693	1,820	1,839	1,674
97 Jan	534	981	1,515	3,480	1,716	1,764	1,813	1,667

Data is derived from NJ Division of Family Development's FAMIS report # FB-160.

Warren County
FOOD STAMP HOUSEHOLDS

