



State of New Jersey

2012-13

03-3710-050

OVERVIEW

BERGEN
NORTHERN VALLEY REGIONAL
GRADE SPAN 09-12
NORTHERN VALLEY REGIONAL HIGH SCHOOL AT DEMAR
150 KNICKERBOCKER RD
DEMAREST, NEW JERSEY 07627-1026

This school's academic performance **is very high when compared** to schools across the state. Additionally, its academic performance **is very high when compared** to its peers. This school's college and career readiness **is very high when compared** to schools across the state. Additionally, its college and career readiness **is high when compared** to its peers. This school's graduation and post-secondary performance **is very high when compared** to schools across the state. Additionally, its graduation and post-secondary readiness **is very high when compared** to its peers.

Performance Areas	Peer Percentile	Statewide Percentile	Percent of Targets Met
Academic Achievement	87	89	100%
College & Career Readiness	61	81	100%
Graduation and Post-Secondary	84	95	100%

Improvement Status

N/A

Rationale

N/A

Very High Performance is defined as being **equal to or above the 80th percentile**.

High Performance is defined as being **between the 60th and 79.9th percentiles**.

Average Performance is defined as being **between the 40th and 59.9th percentiles**.

Lagging Performance is defined as being **between the 20th and 39.9th percentiles**.

Significantly Lagging Performance is defined as being **equal to or below the 19.9th percentile**.

Peer Schools are schools that have similar grade levels and students with similar demographic characteristics, such as the percentage of students qualifying for Free/Reduced Lunch, Limited English Proficiency programs or Special Education programs.

Academic Achievement

This school outperforms **89%** of schools statewide as noted by its statewide percentile and **87%** of schools educating students with similar demographic characteristics as noted in its peer school percentile in the performance area of Academic Achievement. Additionally, this school is meeting **100%** of its performance targets in the area of Academic Achievement.



Academic Achievement measures the content knowledge students have in language arts literacy and math. For high schools, this includes measures of the school's proficiency rate on both the Language Arts Literacy and Math sections of the New Jersey High School Proficiency Assessment (HSPA). A proficiency rate is calculated by summing the count of students who scored either proficient or advanced proficient on the assessment and dividing by the count of valid test scores.

College and Career Readiness

This school outperforms **81%** of schools statewide as noted by its statewide percentile and **61%** of schools educating students with similar demographic characteristics as noted in its peer school percentile in the performance area of College and Career Readiness. Additionally, this school is meeting **100%** of its performance targets in the area of College and Career Readiness.



College and Career Readiness measures the degree to which students are demonstrating behaviors that are indicative of future attendance and/or success in college and careers. For high schools, this includes measures of participation in college readiness tests such as the SAT, ACT or PSAT and in rigorous coursework as defined by participation in AP or IB courses in English, math, social studies and science.

Graduation and Post-Secondary

This school outperforms **95%** of schools statewide as noted by its statewide percentile and **84%** of schools educating students with similar demographic characteristics as noted in its peer school percentile in the performance area of Graduation and Post-Secondary. Additionally, this school is meeting **100%** of its performance targets in the area of Graduation and Post-Secondary.



Graduation and Postsecondary measures the rate at which students who begin high school four years earlier graduate within four years. Also included is a measure of the rate at which students in a particular school drop out of school.

State of New Jersey

2012-13

03-3710-050

DEMOGRAPHIC INFORMATION

BERGEN

NORTHERN VALLEY REGIONAL

GRADE SPAN 09-12

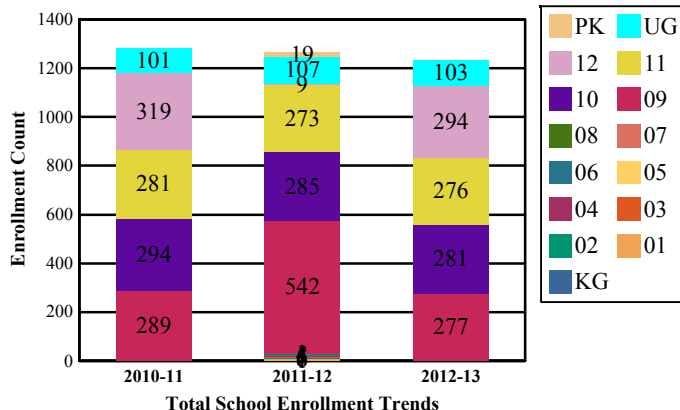
NORTHERN VALLEY REGIONAL HIGH SCHOOL AT DEMAR

150 KNICKERBOCKER RD

DEMAREST, NEW JERSEY 07627-1026

Enrollment by Grade, in Full Time Equivalent

This graph presents the count of students who were 'on roll' by grade in October of each school year.

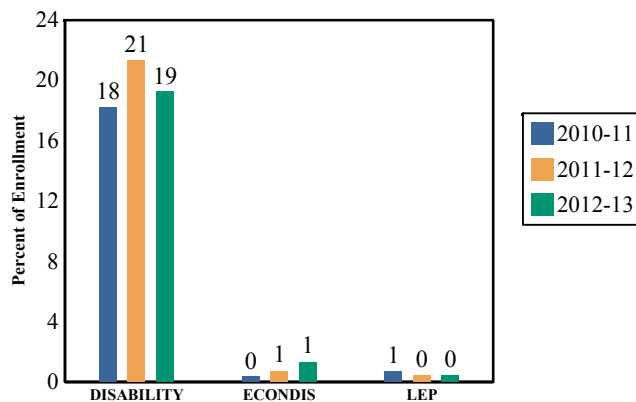


Note: "UG" represents the count of students who are 'on roll' in this school but who are educated in ungraded classrooms, meaning that the classrooms may contain students from multiple grade levels.

Total School Enrollment in Full Time Equivalent

2011-12	1,265
2012-13	1,231

Enrollment Trends by Program Participation



Current Year Enrollment by Program Participation

2012-2013	Count of Students	Percentage of Enrollment
Students with Disability	237	19%
Economically Disadvantaged Students	16	1.3%
Limited English Proficient Students	5	0.4%

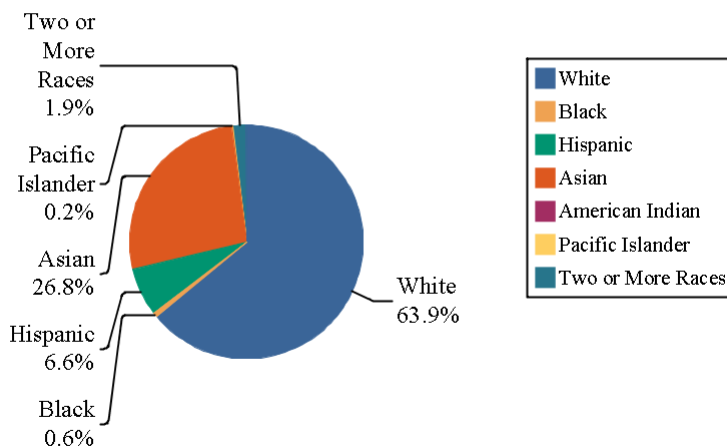
Language Diversity

This table presents the percentage of students who primarily speak each language in their home.

2012-13	Percent
English	97.1%
Korean	1.5%
Spanish	0.6%
Hindi	0.2%
Russian	0.2%
Hebrew	0.2%
Other	0.4%

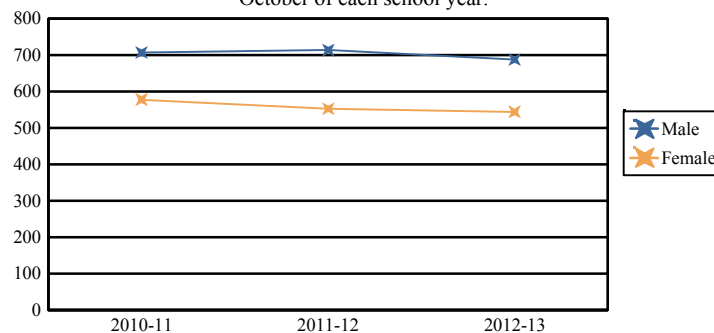
Enrollment by Ethnic/Racial Subgroup

This graph presents the percentages of enrollment for each subgroup defined by the No Child Left Behind Act of 2001



Enrollment by Gender

This graph presents the count of students by gender who were 'on roll' (FTE) in October of each school year.



	Male	Female
2010-11	707	578
2011-12	713	552
2012-13	687	544

State of New Jersey

2012-13

03-3710-050

ACADEMIC ACHIEVEMENT

BERGEN

NORTHERN VALLEY REGIONAL

GRADE SPAN 09-12

NORTHERN VALLEY REGIONAL HIGH SCHOOL AT DEMAR

150 KNICKERBOCKER RD

DEMAREST, NEW JERSEY 07627-1026

Academic Achievement measures the content knowledge students have in Language Arts Literacy and Math. In high schools, this includes the outcomes of the New Jersey High School Proficiency Assessment (HSPA). The first column - Schoolwide Performance - in the table below includes measures of the total schoolwide proficiency rate in both Language Arts Literacy and Math across multiple administrations of the assessment. The second column - Peer School Percentile - indicates where the school's proficiency rate compares to its group of peer schools. For example, a school that has a peer school percentile of 65 has a proficiency rate that is higher than 65% of its peer schools. The third column - Statewide Percentile - indicates where the school's proficiency rate compares to schools across the state. For example, a school that has a statewide percentile of 30 has a proficiency rate that is higher than 30% of all schools with HSPA scores statewide. The last column - Percent of Targets Met - presents the percentage of progress targets met as defined by the NJDOE's NCLB waiver.

The Summary row presents the averages of the peer school percentiles, the average of statewide percentiles and the percentage of statewide targets met.

Academic Achievement Indicators	Schoolwide Performance	Peer Percentile	State Percentile	Percent of Targets Met
HSPA Language Arts Proficiency and above	99%	84	88	100%
HSPA Math Proficiency and above	97%	90	90	100%
SUMMARY - Academic Achievement		87	89	100%

NCLB Progress Targets - Language Arts Literacy

This table presents the Progress Targets as uniquely calculated for each subgroup in each school under NJDOE's NCLB waiver. The methodology - as defined by the United States Department of Education - is calculated so that each subgroup will halve the gap between their 2011 proficiency rate and 100% proficiency by 2017.

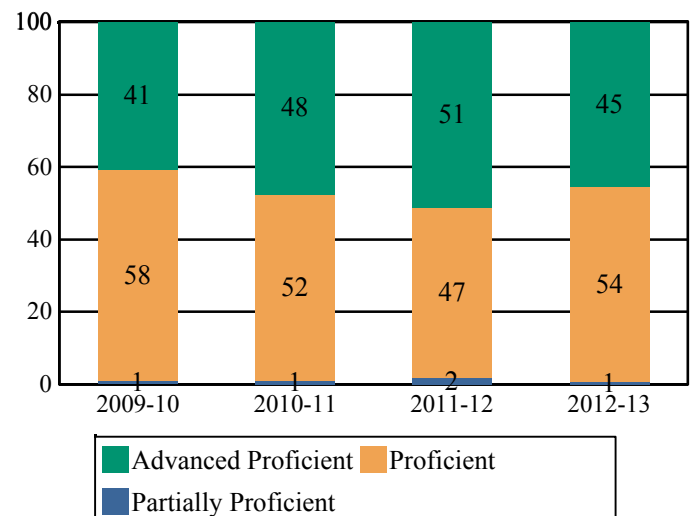
Subgroups	Total Valid Scores	Pass Rate	Target	Met Target?
Schoolwide	297	99.4	90	YES
White	195	99	90	YES
Black	-	-		--
Hispanic	-	-		--
American Indian	-	-		--
Asian	86	100	90	YES
Two or More Races	-	-		--
Students with Disability	37	94.6	90	YES
Limited English Proficient Students	-	-		--
Economically Disadvantaged Students	-	-		--

YES* = Met Progress Target (Confidence Interval Applied)

Data is presented for subgroups when the count is high enough under NCLB suppression rules.

Proficiency Trends - Language Arts Literacy

This graph presents the percentage of students who scored in the Advanced Proficient, Proficient and Partially Proficient categories of the statewide Language Arts Literacy assessment over the prior four years.



State of New Jersey

2012-13

03-3710-050

ACADEMIC ACHIEVEMENT

BERGEN

NORTHERN VALLEY REGIONAL

GRADE SPAN 09-12

NORTHERN VALLEY REGIONAL HIGH SCHOOL AT DEMAR

150 KNICKERBOCKER RD

DEMAREST, NEW JERSEY 07627-1026

NCLB Progress Targets - Math

This table presents the Progress Targets as uniquely calculated for each subgroup in each school under NJDOE's NCLB waiver. The methodology - as defined by the United States Department of Education - is calculated so that each subgroup will halve the gap between their 2011 proficiency rate and 100% proficiency by 2017.

Subgroups	Total Valid Scores	Pass Rate	Target	Met Target?
Schoolwide	297	97	90	YES
White	195	95.9	90	YES
Black	-	-		--
Hispanic	-	-		--
American Indian	-	-		--
Asian	86	100	90	YES
Two or More Races	-	-		--
Students with Disability	37	78.4	87.4	YES*
Limited English Proficient Students	-	-		--
Economically Disadvantaged Students	-	-		--

YES* = Met Progress Target(Confidence Interval Applied)

Data is presented for subgroups when the count is high enough under NCLB suppression rules.

Proficiency Outcomes - Biology

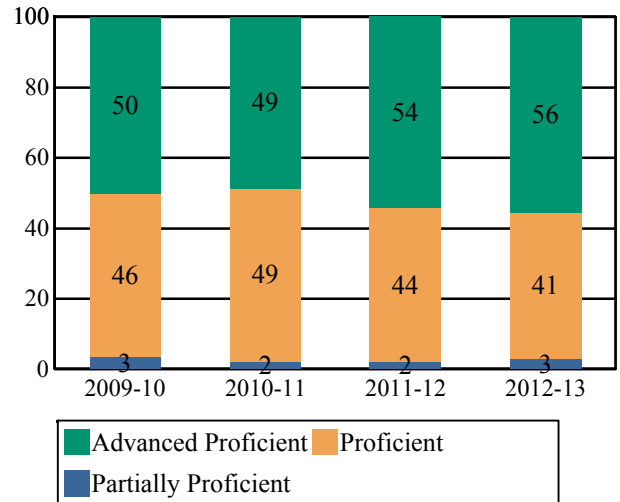
This table presents the percentage of students who scored in the Advanced Proficient, Proficient and Partially Proficient categories of the New Jersey Biology Competency Test (NJBCT) in the latest school year.

Subgroups	Advanced	Proficient	Partially Proficient
Schoolwide	-	-	-
White	-	-	-
Black	-	-	-
Hispanic	-	-	-
American Indian	-	-	-
Asian	-	-	-
Two or More Races	-	-	-
Students with Disability	-	-	-
Limited English Proficient Students	-	-	-
Economically Disadvantaged Students	-	-	-

Data is presented for subgroups when the count is high enough under NCLB suppression rules.

Proficiency Trends - Math

This graph presents the percentage of students who scored in the Advanced Proficient, Proficient and Partially Proficient categories of the statewide Math assessment over the prior four years.



Proficiency Trends - Biology

This graph presents the percentage of students who scored in the Advanced Proficient, Proficient, and Partially Proficient categories of the Biology Competency Test over the last two years.

Data is suppressed to protect the confidentiality of the students.

State of New Jersey

2012-13

03-3710-050

COLLEGE AND CAREER READINESS

BERGEN

NORTHERN VALLEY REGIONAL

GRADE SPAN 09-12

NORTHERN VALLEY REGIONAL HIGH SCHOOL AT DEMAR

150 KNICKERBOCKER RD

DEMAREST, NEW JERSEY 07627-1026

Students in high schools begin to demonstrate college readiness behaviors long before they actually graduate from high school. Among those behaviors are taking college entrance exams and challenging themselves with rigorous course work. The table below presents five such indicators: the percentage of students enrolled in the 12th grade who took the SAT or ACT, the percentage of 10th and 11th graders who took the PSAT, the percentage of students who scored above the SAT benchmark of 1550, the percentage of 11th and 12th graders who took at least one AP or IB test in English, math, social studies or science, and the percentage of those AP or IB tests that were scored a 3 or higher.

The first column - Schoolwide Performance - represents the outcomes for these particular indicators in the school. The second column - Peer School Percentile - indicates how the school's performance compares to its group of peer schools. For example, a school whose peer school percentile is 65 in SAT participation has a higher SAT Participation than 65% of its peer group. The third column - Statewide Percentile - indicates how the school's performance compares to schools across the state. The fourth column - Statewide Target - provides the statewide targets for each of these indicators. The last column - Met Target? - indicates whether the School Performance met or exceeded the statewide target.

The Summary row presents the averages of the peer school percentiles, the average of statewide percentiles and the percentage of statewide targets met.

College and Career Readiness Indicators	Schoolwide Performance	Peer Percentile	Statewide Percentile	Statewide Target	Met Target?
Percent of Students Participating in SAT or ACT	98%	55	86	80%	YES
Percent of Students Participating in PSAT	72%	61	71	60%	YES
Percent of Students Scoring Above 1550 on SAT	76%	87	94	40%	YES
Percent of Students Taking at least one AP Test or IB Test in English, Math, Social Studies or Science	40%	84	92	35%	YES
Percent of AP Tests ≥ 3 or IB Test ≥ 4 in English, Math, Social Studies or Science	77%	19	61	75%	YES
Summary		61	81		100%

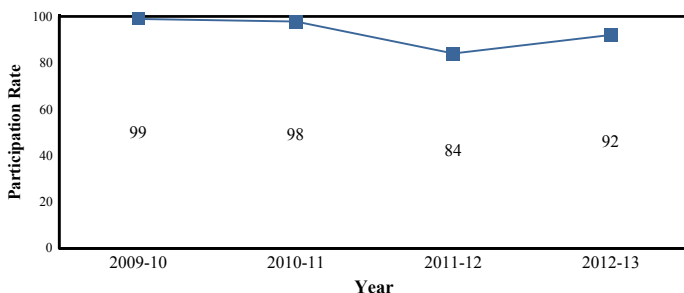
College Readiness Test Participation

The first column of the table below presents the percentage of students enrolled in the 12th grade who took the SAT or ACT and the percentage of students enrolled in 10th and 11th grade who took the PSAT. The second column provides the average across the school's peer group for these two metrics.

2012-13 Percent of Students	School	Peer Avg.	State Avg.
Participating in SAT	92.2%	89.7%	75.3%
Participating in ACT	33.0%		20.6%
Participating in PSAT	72.0%	69.9%	52.5%

Participation Trends - SAT Testing

This graph presents the participation rate in the SAT over the last four years.



AP/IB Participation - 'Unique' Students

The table below presents the proportion of 'unique' students enrolled in at least 11th and 12th grade i.e., each student is counted once regardless of how many AP or IB courses he/she may take. The table also presents the proportion of how many 'unique' students took at least one AP or IB test to the school's enrollment in 11th and 12th grade.

2012-13 Percent of Students Taking	School	Peer Avg.	State Avg.
One or More Course	52.5%	53.1%	32.8%
One or More Test	53.0%	45.4%	26.8%
At least one AP or IB Test in English, Math, Social Studies or Science	40.4%	34.0%	18.9%

Note: Students who are enrolled in AP/IB coursework or take AP/IB tests in grades other than 11th and 12th are included in the numerator of this calculation.

AP /IB Test Results

This table presents the percentage of all AP/IB tests taken by students enrolled in the school that were scored AP ≥ 3 and scored IB ≥ 4 .

2012-13	School	Peer Avg.	State Avg.
Percent of AP Tests ≥ 3 or IB Test ≥ 4	73.5%	85.6%	74.6%
Percent of Scores in AP ≥ 3 or IB ≥ 4 in English, Math, Social Studies or Science	77.0%	86.7%	75.1%

COLLEGE AND CAREER READINESS

BERGEN

NORTHERN VALLEY REGIONAL

GRADE SPAN 09-12

NORTHERN VALLEY REGIONAL HIGH SCHOOL AT DEMAR

150 KNICKERBOCKER RD

DEMAREST, NEW JERSEY 07627-1026

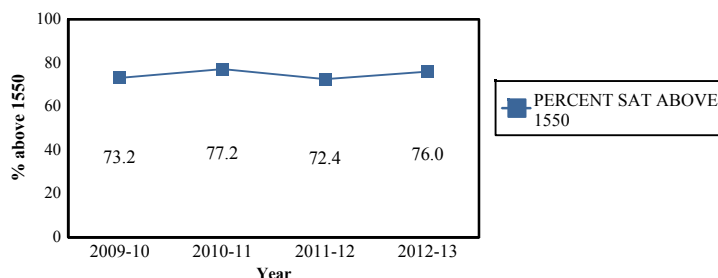
Scholastic Assessment Test (SAT) Results

This table presents the percentage of students who achieved a composite SAT score of 1550 or higher. The SAT benchmark score of 1550 (Critical Reading, Mathematics and Writing Score combined) indicates a 65 percent likelihood of achieving a B- average or higher during the first year of college, which in turn has been found by the College Board's research to be indicative of a high likelihood of college success and completion.

2012-13	School	Peer Avg.	State Avg.
Percent of Students Scoring Above 1550 on SAT	76.0%	65.6%	43.9%

SAT Benchmark Trends

This chart presents the percentage of students who achieved a composite SAT score of 1550 or higher over the past four years.



Composite SAT Score

This chart presents the average composite SAT score from the last academic year for students enrolled in this school as well as the average scores achieved in Critical Reading, Mathematics and Writing. The averages from this school's peer group are also presented.

2012-13	School	Peer Avg.	State Avg.
Composite SAT Score	1,757	1,676	1,512
Critical Reading	565	548	495
Mathematics	603	573	521
Writing	589	555	496

This chart presents the scores achieved in Critical Reading, Mathematics and Writing by the students at the 25th percentile, the 50th percentile and the 75th percentile of the school's distribution of SAT scores.

2012-13	Critical Reading	Mathematics	Writing
75th Percentile	640	680	670
50th Percentile	570	600	590
25th Percentile	490	530	510

AP/IB Courses Offered

This table presents the count of students enrolled in each AP/IB course offered in this school in the first column. The second column presents the count of tests taken in each AP/IB course. The numbers may not match as some students do not take the test in the same year as they take the course and some students may take the course without taking the test or vice versa.

AP/IB Course Name	Students Enrolled	Students Tested
AP English Language and Composition	89	88
AP World History	71	69
AP English Literature and Composition	63	63
AP Statistics	52	52
AP Calculus BC	52	9
AP U.S. History	39	39
AP Biology	33	32
AP U.S. Government and Politics	31	31
AP Physics C	24	24
AP Chemistry	23	23
AP Studio Art—General Portfolio	19	2
AP Art—History of Art	19	17
AP Spanish Language	19	20
AP European History	16	15
AP French Language	3	3



State of New Jersey

2012-13

03-3710-050

COLLEGE AND CAREER READINESS

BERGEN

NORTHERN VALLEY REGIONAL

NORTHERN VALLEY REGIONAL HIGH SCHOOL AT DEMAR

150 KNICKERBOCKER RD

DEMAREST, NEW JERSEY 07627-1026

GRADE SPAN 09-12

Visual and Performing Arts

The chart below contains the percentage of students who were enrolled in at least one Dance, Drama/Theater, Music or Visual Arts class in this school. The last row shows the percentage of students who were enrolled in any Visual and Performing Arts classes in the school.

Percent of Students Enrolled	School	State
Dance	N/R	1.8%
Drama/Theater	1.7%	3.5%
Music	17.9%	16.7%
Visual Arts	23.2%	30.2%
Total: All Visual and Performing Arts	40.2%	47.3%

N/R - Data Not Reported



State of New Jersey

2012-13

03-3710-050

GRADUATION AND POSTSECONDARY

BERGEN

NORTHERN VALLEY REGIONAL HIGH SCHOOL AT DEMAR

150 KNICKERBOCKER RD

NORTHERN VALLEY REGIONAL

GRADE SPAN 09-12

DEMAREST, NEW JERSEY 07627-1026

This section of the performance report presents data about graduation, dropout and post-secondary attendance. The graduation rate is calculated according to the NCLB Cohort methodology as required by the United States Department of Education. Dropout rates are calculated from student-level data submitted by districts for students officially classified as dropouts. The dropout rate is the count of students who dropout in an academic year divided by the school's total enrollment.

The first column - Schoolwide Performance - represents the outcomes for these particular indicators in this school. The second column - Peer School Percentile - indicates how the school's performance compares to its group of peer schools. For example, a school whose peer percentile is 65 in Graduation Rate has a higher Graduation Rate than 65% of its peer group. The third column - Statewide Percentile - indicates how the school's performance compares to schools across the state. The fourth column - Statewide Target - provides the statewide targets for each of these indicators. The Statewide Target for Graduation Rate was established pursuant to NJDOE's NCLB Accountability Workbook. The last column - Met Target - indicates whether the School Performance met or exceeded the statewide target.

The Summary row presents the averages of the peer school percentile, the average of statewide percentile and the percentage of statewide targets met.

Graduation & Post Secondary Indicators	Schoolwide Performance	Peer Percentile	Statewide Percentile	Statewide Targets	Met Target
Overall Graduation Rate	98%	68	89	75%	YES
Dropout Rate	0.0%	100	100	2%	YES
SUMMARY - Graduation & Post-Secondary		84	95		100%

Graduation Rate by Subgroup

This table presents for all NCLB-identified subgroups the "4-year Adjusted Graduation Rate." This rate calculates the percentage of students who are awarded a regular, high school diploma within four years of becoming a first-time ninth grader. The rate is adjusted to account for students who 'transfer-in' and for students who are verified as 'transfers-out'.

	School	State Target
Schoolwide	98%	75%
White	99%	
Black	-	
Hispanic	-	
American Indian	-	
Asian	96%	
Native Hawaiian	-	
Two or More Races	-	
Students with Disability	88%	
Limited English Proficient Students	-	
Economically Disadvantaged Students	-	

Dropout Rate by Subgroup

This table presents for all NCLB-identified subgroups the Dropout rate. This rate calculates the percentage of students who are classified as dropouts divided by the school's total enrollment and by each subgroup enrollment.

	School	State Target
Schoolwide	0%	2%
White	0%	
Black	-	
Hispanic	0%	
American Indian	-	
Asian	0%	
Native Hawaiian	-	
Two or More Races	-	
Students with Disability	0%	
Limited English Proficient Students	-	
Economically Disadvantaged Students	-	

State of New Jersey

2012-13

03-3710-050

GRADUATION AND POSTSECONDARY

BERGEN

NORTHERN VALLEY REGIONAL

GRADE SPAN 09-12

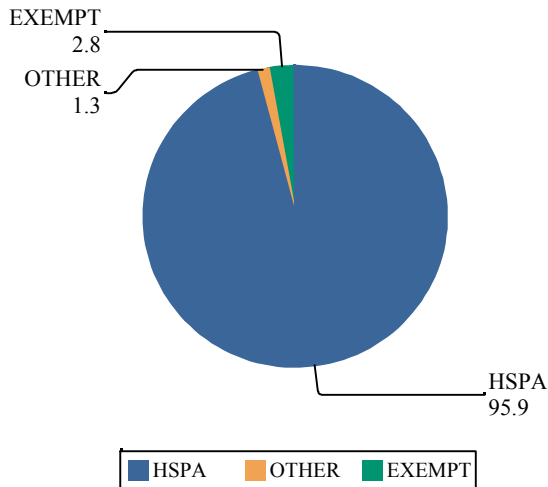
NORTHERN VALLEY REGIONAL HIGH SCHOOL AT DEMAR

150 KNICKERBOCKER RD

DEMAREST, NEW JERSEY 07627-1026

Graduation Pathway Rates

This chart presents the percentage of high school graduates who graduated by passing both sections of the HSPA, who were exempt from passing the HSPA, or who demonstrated proficiency through an alternative pathway such as through the Alternative High School Assessment, achievement of the 'Just Proficient Mean' or an appeal process.



Extended Year Graduation Rate

The chart below presents the 4-year and 5-year graduation rate for the prior school year's cohort in addition to the 4-year graduation rate for last year's cohort.

Class of	4-year Rate	5-year Rate
2011	97%	99%
2012	100%	99%
2013	98%	

Postsecondary Enrollment Rates

This chart presents the enrollment rates of this school's high school graduates, 16-months after high school graduation. The data is from the National Student Clearinghouse which reports that it collects student-level enrollment data from 95% of Institutions of Higher Education nationwide.

The last columns indicate, for the schoolwide total and each subgroup, the percentage of postsecondary enrollees that were enrolled in either a 2 year or a 4 year institution.

	Percent Enrolled	Percent in 2 Year	Percent in 4 Year
Schoolwide	82%	7.9%	92.1%
White	84.7%	9.3%	90.7%
Black	-	-	-
Hispanic	-	-	-
Asian	75.6%	3.2%	96.8%
American Indian	-	-	-
Native Hawaiian	-	-	-
Two or More Races	-	-	-
Students with Disability	72.7%	25%	75%
Limited English Proficient Students	-	-	-
Economically Disadvantaged Students	-	-	-



State of New Jersey

2012-13

03-3710-050

WITHIN SCHOOL ACHIEVEMENT GAP

BERGEN

NORTHERN VALLEY REGIONAL

NORTHERN VALLEY REGIONAL HIGH SCHOOL AT DEMAR

150 KNICKERBOCKER RD

DEMAREST, NEW JERSEY 07627-1026

GRADE SPAN 09-12

This section of the performance report presents data about the achievement gap that exists within a school - as measured by the difference between the students' scale scores at the 25th and 75th percentile in the school, the so-called Interquartile Range (IQR). Taken together with an understanding of the overall and average achievement levels in the school, the IQR furthers an understanding of the range of student outcomes that exist in a school. A school gap smaller than the state gap indicates that the school's range of student outcomes is narrower than the state's while a school gap larger than the state gap indicates that the school's range of student outcomes is larger than the state's.

High School

HSPA Language Arts 25th %ile vs 75th%ile

This table presents the scale scores associated with students at the bottom (0th percentile), the 25th percentile, the 50th percentile, the 75th percentile and the top (99th percentile) of school's distribution.

Percentile	School Scaled Score	State Scaled Score
99th	272	291
75th	255	247
50th	247	237
25th	236	222
0th	166	100

Scaled Score Gap - School	Scaled Score Gap - State
------------------------------	-----------------------------

25th vs 75th Gap	19	25
------------------	----	----

Grade Level - 11

HSPA Math 25th %ile vs 75th%ile

This table presents the scale scores associated with students at the bottom (0th percentile), the 25th percentile, the 50th percentile, the 75th percentile and the top (99th percentile) of school's distribution.

Percentile	School Scaled Score	State Scaled Score
99th	273	300
75th	262	251
50th	253	231
25th	235	209
0th	154	136

Scaled Score Gap - School	Scaled Score Gap - State
------------------------------	-----------------------------

25th vs 75th Gap	27	42
------------------	----	----



State of New Jersey

2012-13

03-3710-050

SCHOOL CLIMATE

BERGEN

NORTHERN VALLEY REGIONAL

GRADE SPAN 09-12

NORTHERN VALLEY REGIONAL HIGH SCHOOL AT DEMAR

150 KNICKERBOCKER RD

DEMAREST, NEW JERSEY 07627-1026

Length of School Day

This table presents the amount of time a school is in session for a typical student on a normal school day.

	School
2012-13	6 Hrs. 56 Mins.

Student Suspension Rate

This table presents the percentage of students who were suspended one or more times during the school year.

	School
2012-13	3.3%

Instructional Time

This table presents the amount of time that a typical student is engaged in instructional activities under the supervision of a certified teacher.

2012-13	School
Full Time	6 Hrs. 33 Mins.
Shared Time	0 Hrs. 0 Mins.

Student Expulsions

This table presents the number of students who were expelled from the school and district during the school year.

	School
2012-13	0

Student to Staff Ratio

This table presents the count of students per faculty member or administrator in the school. All staff are counted in full-time equivalents.

2012-13	School
Faculty	10
Administrators	410

SCHOOL PEER GROUP**NORTHERN VALLEY REGIONAL HIGH SCHOOL AT 03-3710-050**

This table presents the list of peer schools in alphabetical order by county name that was created specifically for this school (highlighted in yellow). Peer schools are drawn from across the state and represent schools that have similar grade configurations and that are educating students of similar demographic characteristics, as measured by enrollment in Free/Reduced Lunch Programs, Limited English Proficiency or Special Education Programs.

<u>COUNTY NAME</u>	<u>DISTRICT NAME</u>	<u>SCHOOL NAME</u>	<u>CDS CODE</u>	<u>GRAD ESPAN</u>	<u>FRPL</u>	<u>LEP</u>	<u>SpED</u>
BERGEN	GLEN ROCK BORO	GLEN ROCK HIGH SCHOOL	03-1760-050	09-12	0.2%	0.4%	14.3%
BERGEN	NORTHERN HIGHLANDS REGIONAL	NORTHERN HIGHLANDS REGIONAL HIGH SCHOOL	03-3700-050	09-12	0.6%	0.1%	11.3%
BERGEN	NORTHERN VALLEY REGIONAL	NORTHER VALLEY REG OLD TAPPEN HIGH SCHOOL	03-3710-060	09-12	1.3%	0.5%	13.5%
BERGEN	NORTHERN VALLEY REGIONAL	NORTHERN VALLEY REGIONAL HIGH SCHOOL AT DEMAREST	03-3710-050	09-12	1.3%	0.4%	19.6%
BERGEN	PASCACK VALLEY REGIONAL	PASCACK HILLS HIGH SCHOOL	03-3960-040	09-12	1.0%	0.3%	16.4%
BERGEN	PASCACK VALLEY REGIONAL	PASCACK VALLEY HIGH SCHOOL	03-3960-050	09-12	1.5%	0.3%	16.6%
BERGEN	RAMAPO-INDIAN HILL REG	INDIAN HILLS HIGH SCHOOL	03-4300-030	09-12	1.3%	0.0%	16.2%
BERGEN	RAMAPO-INDIAN HILL REG	RAMAPO HIGH SCHOOL	03-4300-050	09-12	0.6%	0.2%	12.8%
BERGEN	RIDGEWOOD VILLAGE	RIDGEWOOD HIGH SCHOOL	03-4390-050	09-12	1.4%	1.1%	13.8%
BERGEN	RUTHERFORD BORO	RUTHERFORD HIGH SCHOOL	03-4600-050	09-12	2.2%	0.6%	11.4%
CAMDEN	HADDONFIELD BORO	HADDONFIELD MEMORIAL HIGH SCHOOL	07-1900-050	09-12	2.2%	0.0%	14.7%
ESSEX	CALDWELL-WEST CALDWELL	JAMES CALDWELL HIGH SCHOOL	13-0660-050	09-12	2.3%	0.3%	12.7%
ESSEX	GLEN RIDGE BORO	GLEN RIDGE HIGH SCHOOL	13-1750-050	07-12	0.0%	0.2%	5.2%
ESSEX	LIVINGSTON TWP	LIVINGSTON HIGH SCHOOL	13-2730-050	09-12	1.0%	0.6%	12.8%
ESSEX	VERONA BORO	VERONA HIGH SCHOOL	13-5370-050	09-12	0.0%	0.7%	10.9%
ESSEX	WEST ESSEX REGIONAL	WEST ESSEX HIGH SCHOOL	13-5630-050	09-12	2.6%	0.3%	13.8%
HUNTERDON	N HUNT/VOORHEES REGIONAL	NORTH HUNTERDON HIGH SCHOOL	19-3660-050	09-12	1.2%	0.2%	13.6%
MERCER	HOPEWELL VALLEY REGIONAL	HOPEWELL VALLEY CENTRAL HIGH SCHOOL	21-2280-030	09-12	2.3%	0.1%	9.8%
MIDDLESEX	MONROE TWP	MONROE TOWNSHIP HIGH SCHOOL	23-3290-005	09-12	0.0%	1.4%	16.3%
MONMOUTH	RUMSON-FAIR HAVEN REG	RUMSON-FAIR HAVEN REGIONAL HIGH SCHOOL	25-4580-050	09-12	0.8%	0.1%	13.8%
MORRIS	HANOVER PARK REGIONAL	WHIPPANY PARK HIGH SCHOOL	27-1990-070	09-12	1.9%	0.3%	11.4%
MORRIS	KINNELON BORO	KINNELON HIGH SCHOOL	27-2460-050	09-12	1.3%	0.1%	13.0%
MORRIS	MONTVILLE TWP	MONTVILLE TOWNSHIP HIGH SCHOOL	27-3340-010	09-12	2.6%	0.4%	10.8%
MORRIS	MOUNTAIN LAKES BORO	MOUNTAIN LAKES HIGH SCHOOL	27-3460-050	09-12	0.9%	0.1%	17.2%
MORRIS	WEST MORRIS REGIONAL	WEST MORRIS CENTRAL HIGH SCHOOL	27-5660-030	09-12	1.0%	0.4%	15.4%
MORRIS	WEST MORRIS REGIONAL	WEST MORRIS MENDHAM HIGH SCHOOL	27-5660-050	09-12	0.6%	0.4%	13.6%
OCEAN	POINT PLEASANT BORO	POINT PLEASANT BOROUGH HIGH SCHOOL	29-4210-030	09-12	0.0%	0.2%	13.7%
SOMERSET	BERNARDS TWP	RIDGE HIGH SCHOOL	35-0350-050	09-12	1.4%	0.3%	14.0%
SOMERSET	WATCHUNG HILLS REGIONAL	WATCHUNG HILLS REGIONAL HIGH SCHOOL	35-5550-050	09-12	3.1%	0.3%	15.1%
UNION	BERKELEY HEIGHTS TWP	GOVERNOR LIVINGSTON HIGH SCHOOL	39-0310-005	09-12	2.9%	0.1%	11.4%
UNION	WESTFIELD TOWN	WESTFIELD SENIOR HIGH SCHOOL	39-5730-050	09-12	2.6%	0.2%	17.3%



State of New Jersey

2012-13

03-3710-060

OVERVIEW

BERGEN

NORTHERN VALLEY REGIONAL

GRADE SPAN 09-12

NORTHER VALLEY REG OLD TAPPEN HIGH SCHOO

CENTRAL AVE

OLD TAPPAN, NEW JERSEY 07675

This school's academic performance **is very high when compared** to schools across the state. Additionally, its academic performance **is very high when compared** to its peers. This school's college and career readiness **is high when compared** to schools across the state. Additionally, its college and career readiness **is about average when compared** to its peers. This school's graduation and post-secondary performance **is high when compared** to schools across the state. Additionally, its graduation and post-secondary readiness **lags in comparison** to its peers.

Performance Areas	Peer Percentile	Statewide Percentile	Percent of Targets Met
Academic Achievement	91	90	100%
College & Career Readiness	46	78	80%
Graduation and Post-Secondary	34	73	100%

Improvement Status

N/A

Rationale

N/A

Very High Performance is defined as being **equal to or above the 80th percentile**.

High Performance is defined as being **between the 60th and 79.9th percentiles**.

Average Performance is defined as being **between the 40th and 59.9th percentiles**.

Lagging Performance is defined as being **between the 20th and 39.9th percentiles**.

Significantly Lagging Performance is defined as being **equal to or below the 19.9th percentile**.

Peer Schools are schools that have similar grade levels and students with similar demographic characteristics, such as the percentage of students qualifying for Free/Reduced Lunch, Limited English Proficiency programs or Special Education programs.

Academic Achievement

This school outperforms **90%** of schools statewide as noted by its statewide percentile and **91%** of schools educating students with similar demographic characteristics as noted in its peer school percentile in the performance area of Academic Achievement. Additionally, this school is meeting **100%** of its performance targets in the area of Academic Achievement.



Academic Achievement measures the content knowledge students have in language arts literacy and math. For high schools, this includes measures of the school's proficiency rate on both the Language Arts Literacy and Math sections of the New Jersey High School Proficiency Assessment (HSPA). A proficiency rate is calculated by summing the count of students who scored either proficient or advanced proficient on the assessment and dividing by the count of valid test scores.

College and Career Readiness

This school outperforms **78%** of schools statewide as noted by its statewide percentile and **46%** of schools educating students with similar demographic characteristics as noted in its peer school percentile in the performance area of College and Career Readiness. Additionally, this school is meeting **80%** of its performance targets in the area of College and Career Readiness.



College and Career Readiness measures the degree to which students are demonstrating behaviors that are indicative of future attendance and/or success in college and careers. For high schools, this includes measures of participation in college readiness tests such as the SAT, ACT or PSAT and in rigorous coursework as defined by participation in AP or IB courses in English, math, social studies and science.

Graduation and Post-Secondary

This school outperforms **73%** of schools statewide as noted by its statewide percentile and **34%** of schools educating students with similar demographic characteristics as noted in its peer school percentile in the performance area of Graduation and Post-Secondary. Additionally, this school is meeting **100%** of its performance targets in the area of Graduation and Post-Secondary.



Graduation and Postsecondary measures the rate at which students who begin high school four years earlier graduate within four years. Also included is a measure of the rate at which students in a particular school drop out of school.

State of New Jersey

2012-13

03-3710-060

NORTHER VALLEY REG OLD TAPPEN HIGH SCHOO

CENTRAL AVE

OLD TAPPAN, NEW JERSEY 07675

DEMOGRAPHIC INFORMATION

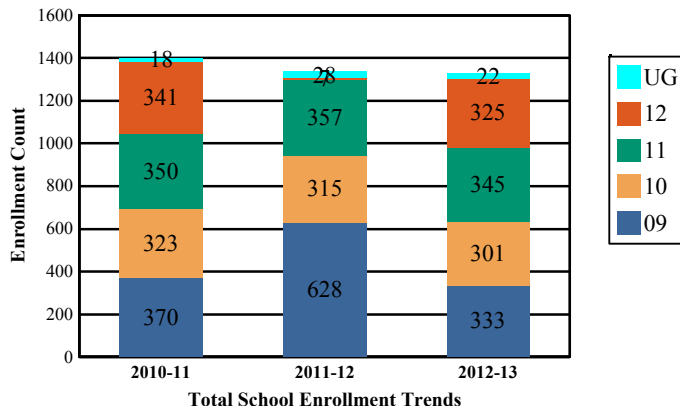
BERGEN

NORTHERN VALLEY REGIONAL

GRADE SPAN 09-12

Enrollment by Grade, in Full Time Equivalent

This graph presents the count of students who were 'on roll' by grade in October of each school year.



Total School Enrollment Trends

Note: "UG" represents the count of students who are 'on roll' in this school but who are educated in ungraded classrooms, meaning that the classrooms may contain students from multiple grade levels.

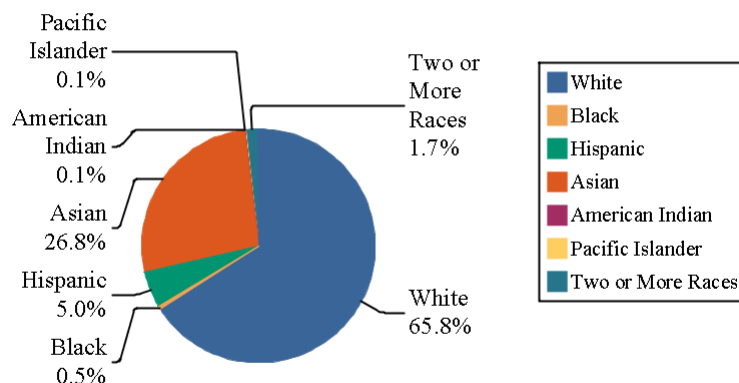
Language Diversity

This table presents the percentage of students who primarily speak each language in their home.

2012-13	Percent
English	89.9%
Korean	7.0%
Spanish	0.7%
Chinese	0.2%
Urdu	0.2%
Greek, Modern (1453-)	0.2%
Other	1.8%

Enrollment by Ethnic/Racial Subgroup

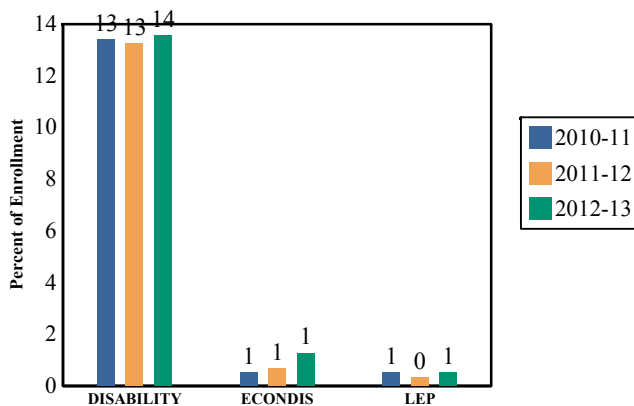
This graph presents the percentages of enrollment for each subgroup defined by the No Child Left Behind Act of 2001



Total School Enrollment in Full Time Equivalent

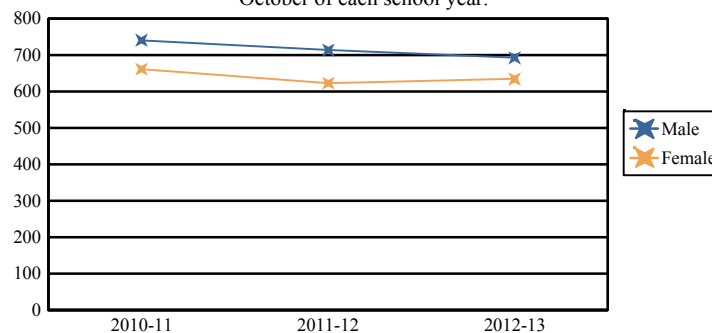
2011-12	1,335
2012-13	1,326

Enrollment Trends by Program Participation



Enrollment by Gender

This graph presents the count of students by gender who were 'on roll' (FTE) in October of each school year.



Current Year Enrollment by Program Participation

2012-2013	Count of Students	Percentage of Enrollment
Students with Disability	180	14%
Economically Disadvantaged Students	17	1.3%
Limited English Proficient Students	7	0.5%

	Male	Female
2010-11	741	661
2011-12	713	622
2012-13	692	634

State of New Jersey

2012-13

03-3710-060

ACADEMIC ACHIEVEMENT

BERGEN

NORTHER VALLEY REG OLD TAPPEN HIGH SCHOO

CENTRAL AVE

NORTHERN VALLEY REGIONAL

GRADE SPAN 09-12

OLD TAPPAN, NEW JERSEY 07675

Academic Achievement measures the content knowledge students have in Language Arts Literacy and Math. In high schools, this includes the outcomes of the New Jersey High School Proficiency Assessment (HSPA). The first column - Schoolwide Performance - in the table below includes measures of the total schoolwide proficiency rate in both Language Arts Literacy and Math across multiple administrations of the assessment. The second column - Peer School Percentile - indicates where the school's proficiency rate compares to its group of peer schools. For example, a school that has a peer school percentile of 65 has a proficiency rate that is higher than 65% of its peer schools. The third column - Statewide Percentile - indicates where the school's proficiency rate compares to schools across the state. For example, a school that has a statewide percentile of 30 has a proficiency rate that is higher than 30% of all schools with HSPA scores statewide. The last column - Percent of Targets Met - presents the percentage of progress targets met as defined by the NJDOE's NCLB waiver.

The Summary row presents the averages of the peer school percentiles, the average of statewide percentiles and the percentage of statewide targets met.

Academic Achievement Indicators	Schoolwide Performance	Peer Percentile	State Percentile	Percent of Targets Met
HSPA Language Arts Proficiency and above	99%	81	86	100%
HSPA Math Proficiency and above	98%	100	93	100%
SUMMARY - Academic Achievement		91	90	100%

NCLB Progress Targets - Language Arts Literacy

This table presents the Progress Targets as uniquely calculated for each subgroup in each school under NJDOE's NCLB waiver. The methodology - as defined by the United States Department of Education - is calculated so that each subgroup will halve the gap between their 2011 proficiency rate and 100% proficiency by 2017.

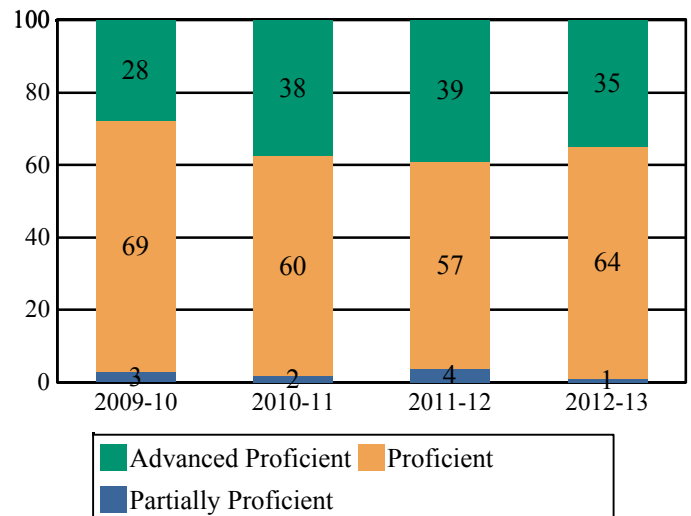
Subgroups	Total Valid Scores	Pass Rate	Target	Met Target?
Schoolwide	315	99	90	YES
White	205	100	90	YES
Black	-	-		--
Hispanic	-	-		--
American Indian	-	-		--
Asian	92	97.8	90	YES
Two or More Races	-	-		--
Students with Disability	35	97.2	87.8	YES
Limited English Proficient Students	-	-		--
Economically Disadvantaged Students	-	-		--

YES* = Met Progress Target (Confidence Interval Applied)

Data is presented for subgroups when the count is high enough under NCLB suppression rules.

Proficiency Trends - Language Arts Literacy

This graph presents the percentage of students who scored in the Advanced Proficient, Proficient and Partially Proficient categories of the statewide Language Arts Literacy assessment over the prior four years.



ACADEMIC ACHIEVEMENT

BERGEN

NORTHERN VALLEY REGIONAL

GRADE SPAN 09-12

NCLB Progress Targets - Math

This table presents the Progress Targets as uniquely calculated for each subgroup in each school under NJDOE's NCLB waiver. The methodology - as defined by the United States Department of Education - is calculated so that each subgroup will halve the gap between their 2011 proficiency rate and 100% proficiency by 2017.

Subgroups	Total Valid Scores	Pass Rate	Target	Met Target?
Schoolwide	315	98.4	90	YES
White	205	98	90	YES
Black	-	-		--
Hispanic	-	-		--
American Indian	-	-		--
Asian	92	100	90	YES
Two or More Races	-	-		--
Students with Disability	35	91.5	76.9	YES
Limited English Proficient Students	-	-		--
Economically Disadvantaged Students	-	-		--

YES* = Met Progress Target(Confidence Interval Applied)

Data is presented for subgroups when the count is high enough under NCLB suppression rules.

Proficiency Outcomes - Biology

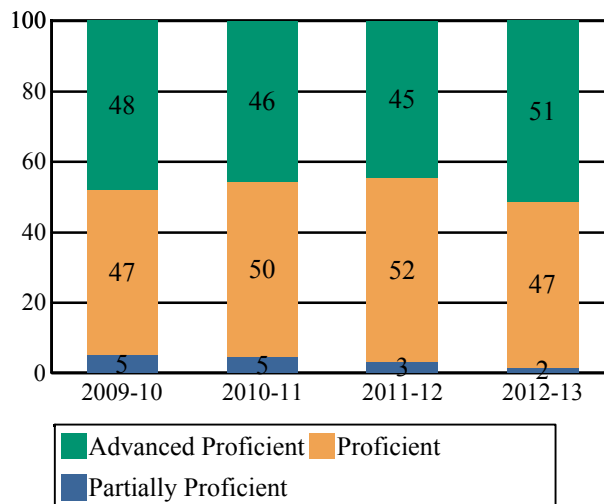
This table presents the percentage of students who scored in the Advanced Proficient, Proficient and Partially Proficient categories of the New Jersey Biology Competency Test (NJBCT) in the latest school year.

Subgroups	Advanced	Proficient	Partially Proficient
Schoolwide	36%	49%	15%
White	28%	55%	17%
Black	-	-	-
Hispanic	-	-	-
American Indian	-	-	-
Asian	57%	34%	8%
Two or More Races	-	-	-
Students with Disability	8%	44%	49%
Limited English Proficient Students	-	-	-
Economically Disdvantaged Students	-	-	-

Data is presented for subgroups when the count is high enough under NCLB suppression rules.

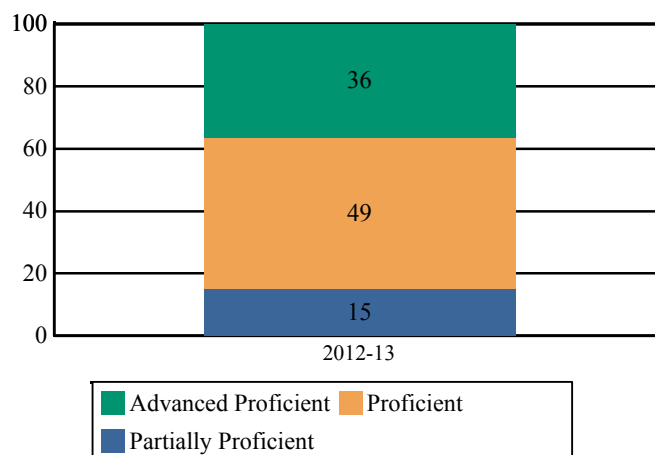
Proficiency Trends - Math

This graph presents the percentage of students who scored in the Advanced Proficient, Proficient and Partially Proficient categories of the statewide Math assessment over the prior four years.



Proficiency Trends - Biology

This graph presents the percentage of students who scored in the Advanced Proficient, Proficient, and Partially Proficient categories of the Biology Competency Test over the last two years.





State of New Jersey

2012-13

03-3710-060

COLLEGE AND CAREER READINESS

BERGEN

NORTHERN VALLEY REGIONAL

GRADE SPAN 09-12

NORTHER VALLEY REG OLD TAPPEN HIGH SCHOOL

CENTRAL AVE

OLD TAPPAN, NEW JERSEY 07675

Students in high schools begin to demonstrate college readiness behaviors long before they actually graduate from high school. Among those behaviors are taking college entrance exams and challenging themselves with rigorous course work. The table below presents five such indicators: the percentage of students enrolled in the 12th grade who took the SAT or ACT, the percentage of 10th and 11th graders who took the PSAT, the percentage of students who scored above the SAT benchmark of 1550, the percentage of 11th and 12th graders who took at least one AP or IB test in English, math, social studies or science, and the percentage of those AP or IB tests that were scored a 3 or higher.

The first column - Schoolwide Performance - represents the outcomes for these particular indicators in the school. The second column - Peer School Percentile - indicates how the school's performance compares to its group of peer schools. For example, a school whose peer school percentile is 65 in SAT participation has a higher SAT Participation than 65% of its peer group. The third column - Statewide Percentile - indicates how the school's performance compares to schools across the state. The fourth column - Statewide Target - provides the statewide targets for each of these indicators. The last column - Met Target? - indicates whether the School Performance met or exceeded the statewide target.

The Summary row presents the averages of the peer school percentiles, the average of statewide percentiles and the percentage of statewide targets met.

College and Career Readiness Indicators	Schoolwide Performance	Peer Percentile	Statewide Percentile	Statewide Target	Met Target?
Percent of Students Participating in SAT or ACT	96%	45	82	80%	YES
Percent of Students Participating in PSAT	70%	55	70	60%	YES
Percent of Students Scoring Above 1550 on SAT	69%	65	89	40%	YES
Percent of Students Taking at least one AP Test or IB Test in English, Math, Social Studies or Science	30%	26	79	35%	NO
Percent of AP Tests ≥ 3 or IB Test ≥ 4 in English, Math, Social Studies or Science	84%	39	72	75%	YES
Summary		46	78		80%

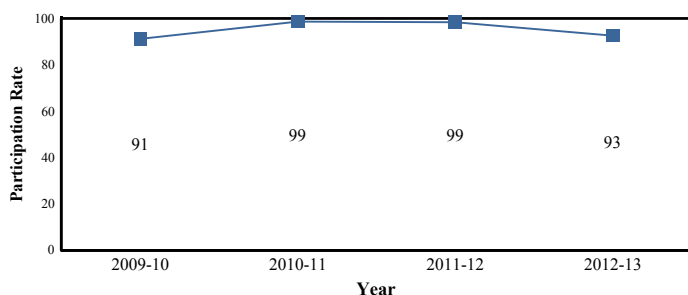
College Readiness Test Participation

The first column of the table below presents the percentage of students enrolled in the 12th grade who took the SAT or ACT and the percentage of students enrolled in 10th and 11th grade who took the PSAT. The second column provides the average across the school's peer group for these two metrics.

2012-13 Percent of Students	School	Peer Avg.	State Avg.
Participating in SAT	92.6%	89.7%	75.3%
Participating in ACT	25.8%		20.6%
Participating in PSAT	70.3%	67.3%	52.5%

Participation Trends - SAT Testing

This graph presents the participation rate in the SAT over the last four years.



AP/IB Participation - 'Unique' Students

The table below presents the proportion of 'unique' students enrolled in at least 11th and 12th grade i.e., each student is counted once regardless of how many AP or IB courses he/she may take. The table also presents the proportion of how many 'unique' students took at least one AP or IB test to the school's enrollment in 11th and 12th grade.

2012-13 Percent of Students Taking	School	Peer Avg.	State Avg.
One or More Course	43.4%	53.4%	32.8%
One or More Test	45.7%	45.4%	26.8%
At least one AP or IB Test in English, Math, Social Studies or Science	30.3%	34.6%	18.9%

Note: Students who are enrolled in AP/IB coursework or take AP/IB tests in grades other than 11th and 12th are included in the numerator of this calculation.

AP /IB Test Results

This table presents the percentage of all AP/IB tests taken by students enrolled in the school that were scored AP ≥ 3 and scored IB ≥ 4 .

2012-13	School	Peer Avg.	State Avg.
Percent of AP Tests ≥ 3 or IB Test ≥ 4	73.2%	84.8%	74.6%
Percent of Scores in AP ≥ 3 or IB ≥ 4 in English, Math, Social Studies or Science	83.7%	86.0%	75.1%

COLLEGE AND CAREER READINESS

BERGEN

NORTHERN VALLEY REGIONAL

GRADE SPAN 09-12

NORTHER VALLEY REG OLD TAPPEN HIGH SCHOO

CENTRAL AVE

OLD TAPPAN, NEW JERSEY 07675

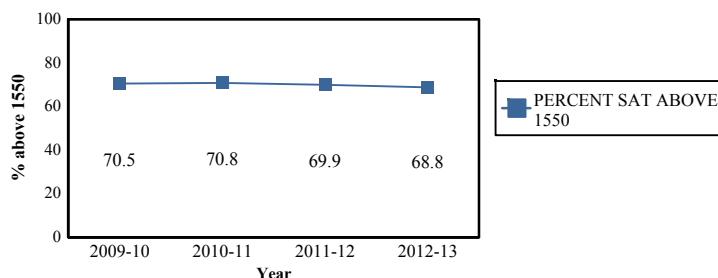
Scholastic Assessment Test (SAT) Results

This table presents the percentage of students who achieved a composite SAT score of 1550 or higher. The SAT benchmark score of 1550 (Critical Reading, Mathematics and Writing Score combined) indicates a 65 percent likelihood of achieving a B- average or higher during the first year of college, which in turn has been found by the College Board's research to be indicative of a high likelihood of college success and completion.

2012-13	School	Peer Avg.	State Avg.
Percent of Students Scoring Above 1550 on SAT	68.8%	64.5%	43.9%

SAT Benchmark Trends

This chart presents the percentage of students who achieved a composite SAT score of 1550 or higher over the past four years.



Composite SAT Score

This chart presents the average composite SAT score from the last academic year for students enrolled in this school as well as the average scores achieved in Critical Reading, Mathematics and Writing. The averages from this school's peer group are also presented.

2012-13	School	Peer Avg.	State Avg.
Composite SAT Score	1,710	1,674	1,512
Critical Reading	546	547	495
Mathematics	592	572	521
Writing	572	554	496

This chart presents the scores achieved in Critical Reading, Mathematics and Writing by the students at the 25th percentile, the 50th percentile and the 75th percentile of the school's distribution of SAT scores.

2012-13	Critical Reading	Mathematics	Writing
75th Percentile	620	680	650
50th Percentile	540	590	570
25th Percentile	470	500	490

AP/IB Courses Offered

This table presents the count of students enrolled in each AP/IB course offered in this school in the first column. The second column presents the count of tests taken in each AP/IB course. The numbers may not match as some students do not take the test in the same year as they take the course and some students may take the course without taking the test or vice versa.

AP/IB Course Name	Students Enrolled	Students Tested
AP World History	65	65
AP English Literature and Composition	44	44
AP Calculus BC	41	40
AP Statistics	40	40
AP European History	40	40
AP U.S. Government and Politics	38	36
AP U.S. History	38	37
AP Calculus AB	36	36
AP English Language and Composition	35	36
AP Physics C	34	34
AP Spanish Language	26	26
AP Art—History of Art	24	24
AP Chemistry	21	21
AP Biology	20	20
AP Studio Art—Drawing Portfolio	19	4



State of New Jersey

2012-13

03-3710-060

COLLEGE AND CAREER READINESS

NORTHER VALLEY REG OLD TAPPEN HIGH SCHOO

BERGEN

CENTRAL AVE

NORTHERN VALLEY REGIONAL

GRADE SPAN 09-12

OLD TAPPAN, NEW JERSEY 07675

Visual and Performing Arts

The chart below contains the percentage of students who were enrolled in at least one Dance, Drama/Theater, Music or Visual Arts class in this school. The last row shows the percentage of students who were enrolled in any Visual and Performing Arts classes in the school.

Percent of Students Enrolled	School	State
Dance	N/R	1.8%
Drama/Theater	3.2%	3.5%
Music	13.1%	16.7%
Visual Arts	30.0%	30.2%
Total: All Visual and Performing Arts	42.8%	47.3%

N/R - Data Not Reported



State of New Jersey

2012-13

03-3710-060

GRADUATION AND POSTSECONDARY

BERGEN

NORTHER VALLEY REG OLD TAPPEN HIGH SCHOOL

CENTRAL AVE

NORTHERN VALLEY REGIONAL

GRADE SPAN 09-12

OLD TAPPAN, NEW JERSEY 07675

This section of the performance report presents data about graduation, dropout and post-secondary attendance. The graduation rate is calculated according to the NCLB Cohort methodology as required by the United States Department of Education. Dropout rates are calculated from student-level data submitted by districts for students officially classified as dropouts. The dropout rate is the count of students who dropout in an academic year divided by the school's total enrollment.

The first column - Schoolwide Performance - represents the outcomes for these particular indicators in this school. The second column - Peer School Percentile - indicates how the school's performance compares to its group of peer schools. For example, a school whose peer percentile is 65 in Graduation Rate has a higher Graduation Rate than 65% of its peer group. The third column - Statewide Percentile - indicates how the school's performance compares to schools across the state. The fourth column - Statewide Target - provides the statewide targets for each of these indicators. The Statewide Target for Graduation Rate was established pursuant to NJDOE's NCLB Accountability Workbook. The last column - Met Target - indicates whether the School Performance met or exceeded the statewide target.

The Summary row presents the averages of the peer school percentile, the average of statewide percentile and the percentage of statewide targets met.

Graduation & Post Secondary Indicators	Schoolwide Performance	Peer Percentile	Statewide Percentile	Statewide Targets	Met Target
Overall Graduation Rate	97%	39	82	75%	YES
Dropout Rate	0.3%	29	63	2%	YES
SUMMARY - Graduation & Post-Secondary		34	73		100%

Graduation Rate by Subgroup

This table presents for all NCLB-identified subgroups the "4-year Adjusted Graduation Rate." This rate calculates the percentage of students who are awarded a regular, high school diploma within four years of becoming a first-time ninth grader. The rate is adjusted to account for students who 'transfer-in' and for students who are verified as 'transfers-out'.

	School	State Target
Schoolwide	97%	75%
White	98%	
Black	-	
Hispanic	-	
American Indian	-	
Asian	96%	
Native Hawaiian	-	
Two or More Races	-	
Students with Disability	90%	
Limited English Proficient Students	-	
Economically Disadvantaged Students	-	

Dropout Rate by Subgroup

This table presents for all NCLB-identified subgroups the Dropout rate. This rate calculates the percentage of students who are classified as dropouts divided by the school's total enrollment and by each subgroup enrollment.

	School	State Target
Schoolwide	.3%	2%
White	.5%	
Black	-	
Hispanic	0%	
American Indian	-	
Asian	0%	
Native Hawaiian	-	
Two or More Races	-	
Students with Disability	.6%	
Limited English Proficient Students	-	
Economically Disadvantaged Students	-	

State of New Jersey

2012-13

03-3710-060

GRADUATION AND POSTSECONDARY

BERGEN

NORTHERN VALLEY REGIONAL

GRADE SPAN 09-12

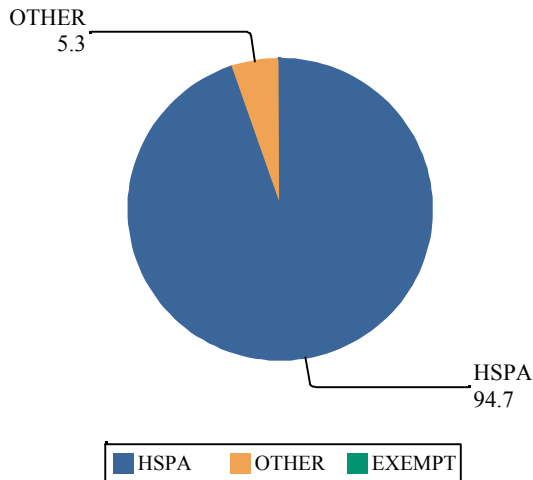
NORTHER VALLEY REG OLD TAPPEN HIGH SCHOO

CENTRAL AVE

OLD TAPPAN, NEW JERSEY 07675

Graduation Pathway Rates

This chart presents the percentage of high school graduates who graduated by passing both sections of the HSPA, who were exempt from passing the HSPA, or who demonstrated proficiency through an alternative pathway such as through the Alternative High School Assessment, achievement of the 'Just Proficient Mean' or an appeal process.



Extended Year Graduation Rate

The chart below presents the 4-year and 5-year graduation rate for the prior school year's cohort in addition to the 4-year graduation rate for last year's cohort.

Class of	4-year Rate	5-year Rate
2011	97%	98%
2012	96%	98%
2013	97%	

Postsecondary Enrollment Rates

This chart presents the enrollment rates of this school's high school graduates, 16-months after high school graduation. The data is from the National Student Clearinghouse which reports that it collects student-level enrollment data from 95% of Institutions of Higher Education nationwide.

The last columns indicate, for the schoolwide total and each subgroup, the percentage of postsecondary enrollees that were enrolled in either a 2 year or a 4 year institution.

	Percent Enrolled	Percent in 2 Year	Percent in 4 Year
Schoolwide	83%	8.1%	91.9%
White	85.1%	7.7%	92.3%
Black	-	-	-
Hispanic	-	-	-
Asian	79.3%	5.5%	94.5%
American Indian	-	-	-
Native Hawaiian	-	-	-
Two or More Races	-	-	-
Students with Disability	60.5%	38.5%	61.5%
Limited English Proficient Students	-	-	-
Economically Disadvantaged Students	-	-	-



State of New Jersey

2012-13

03-3710-060

WITHIN SCHOOL ACHIEVEMENT GAP

BERGEN
NORTHERN VALLEY REGIONAL
GRADE SPAN 09-12
NORTHER VALLEY REG OLD TAPPEN HIGH SCHOOL
CENTRAL AVE
OLD TAPPAN, NEW JERSEY 07675

This section of the performance report presents data about the achievement gap that exists within a school - as measured by the difference between the students' scale scores at the 25th and 75th percentile in the school, the so-called Interquartile Range (IQR). Taken together with an understanding of the overall and average achievement levels in the school, the IQR furthers an understanding of the range of student outcomes that exist in a school. A school gap smaller than the state gap indicates that the school's range of student outcomes is narrower than the state's while a school gap larger than the state gap indicates that the school's range of student outcomes is larger than the state's.

High School

HSPA Language Arts 25th %ile vs 75th%ile

This table presents the scale scores associated with students at the bottom (0th percentile), the 25th percentile, the 50th percentile, the 75th percentile and the top (99th percentile) of school's distribution.

Percentile	School Scaled Score	State Scaled Score
99th	275	291
75th	252	247
50th	243	237
25th	234	222
0th	169	100

	Scaled Score Gap - School	Scaled Score Gap - State
25th vs 75th Gap	18	25

Grade Level - 11

HSPA Math 25th %ile vs 75th%ile

This table presents the scale scores associated with students at the bottom (0th percentile), the 25th percentile, the 50th percentile, the 75th percentile and the top (99th percentile) of school's distribution.

Percentile	School Scaled Score	State Scaled Score
99th	273	300
75th	262	251
50th	250	231
25th	229	209
0th	166	136

	Scaled Score Gap - School	Scaled Score Gap - State
25th vs 75th Gap	33	42

State of New Jersey

2012-13

03-3710-060

NORTHER VALLEY REG OLD TAPPEN HIGH SCHOO
CENTRAL AVE
OLD TAPPAN, NEW JERSEY 07675

SCHOOL CLIMATE

BERGEN

NORTHERN VALLEY REGIONAL

GRADE SPAN 09-12

Length of School Day

This table presents the amount of time a school is in session for a typical student on a normal school day.

	School
2012-13	6 Hrs. 56 Mins.

Student Suspension Rate

This table presents the percentage of students who were suspended one or more times during the school year.

	School
2012-13	3.2%

Instructional Time

This table presents the amount of time that a typical student is engaged in instructional activities under the supervision of a certified teacher.

2012-13	School
Full Time	6 Hrs. 33 Mins.
Shared Time	0 Hrs. 0 Mins.

Student Expulsions

This table presents the number of students who were expelled from the school and district during the school year.

	School
2012-13	0

Student to Staff Ratio

This table presents the count of students per faculty member or administrator in the school. All staff are counted in full-time equivalents.

2012-13	School
Faculty	10
Administrators	442

SCHOOL PEER GROUP**Norther Valley Reg Old Tappen High Schoo****03-3710-060**

This table presents the list of peer schools in alphabetical order by county name that was created specifically for this school (highlighted in yellow). Peer schools are drawn from across the state and represent schools that have similar grade configurations and that are educating students of similar demographic characteristics, as measured by enrollment in Free/Reduced Lunch Programs, Limited English Proficiency or Special Education Programs.

<u>COUNTY NAME</u>	<u>DISTRICT NAME</u>	<u>SCHOOL NAME</u>	<u>CDS CODE</u>	<u>GRAD ESPAN</u>	<u>FRPL</u>	<u>LEP</u>	<u>SpED</u>
BERGEN	GLEN ROCK BORO	GLEN ROCK HIGH SCHOOL	03-1760-050 09-12		0.2%	0.4%	14.3%
BERGEN	NORTHERN VALLEY REGIONAL	NORTHER VALLEY REG OLD TAPPEN HIGH SCHOO	03-3710-060 09-12		1.3%	0.5%	13.5%
BERGEN	NORTHERN VALLEY REGIONAL	NORTHERN VALLEY REGIONAL HIGH SCHOOL AT DEMAREST	03-3710-050 09-12		1.3%	0.4%	19.6%
BERGEN	PASCACK VALLEY REGIONAL	PASCACK HILLS HIGH SCHOOL	03-3960-040 09-12		1.0%	0.3%	16.4%
BERGEN	PASCACK VALLEY REGIONAL	PASCACK VALLEY HIGH SCHOOL	03-3960-050 09-12		1.5%	0.3%	16.6%
BERGEN	RAMAPO-INDIAN HILL REG	INDIAN HILLS HIGH SCHOOL	03-4300-030 09-12		1.3%	0.0%	16.2%
BERGEN	RAMAPO-INDIAN HILL REG	RAMAPO HIGH SCHOOL	03-4300-050 09-12		0.6%	0.2%	12.8%
BERGEN	RIDGEWOOD VILLAGE	RIDGEWOOD HIGH SCHOOL	03-4390-050 09-12		1.4%	1.1%	13.8%
BERGEN	RUTHERFORD BORO	RUTHERFORD HIGH SCHOOL	03-4600-050 09-12		2.2%	0.6%	11.4%
CAMDEN	HADDONFIELD BORO	HADDONFIELD MEMORIAL HIGH SCHOOL	07-1900-050 09-12		2.2%	0.0%	14.7%
ESSEX	CALDWELL-WEST CALDWELL	JAMES CALDWELL HIGH SCHOOL	13-0660-050 09-12		2.3%	0.3%	12.7%
ESSEX	LIVINGSTON TWP	LIVINGSTON HIGH SCHOOL	13-2730-050 09-12		1.0%	0.6%	12.8%
ESSEX	VERONA BORO	VERONA HIGH SCHOOL	13-5370-050 09-12		0.0%	0.7%	10.9%
ESSEX	WEST ESSEX REGIONAL	WEST ESSEX HIGH SCHOOL	13-5630-050 09-12		2.6%	0.3%	13.8%
HUNTERDON	N HUNT/VOORHEES REGIONAL	NORTH HUNTERDON HIGH SCHOOL	19-3660-050 09-12		1.2%	0.2%	13.6%
MERCER	HOPEWELL VALLEY REGIONAL	HOPEWELL VALLEY CENTRAL HIGH SCHOOL	21-2280-030 09-12		2.3%	0.1%	9.8%
MERCER	ROBBINSVILLE TWP	ROBBINSVILLE HIGH SCHOOL	21-5510-030 09-12		3.6%	0.1%	11.7%
MIDDLESEX	MONROE TWP	MONROE TOWNSHIP HIGH SCHOOL	23-3290-005 09-12		0.0%	1.4%	16.3%
MONMOUTH	SHORE REGIONAL	SHORE REGIONAL HIGH SCHOOL	25-4760-050 09-12		3.9%	0.0%	11.0%
MORRIS	HANOVER PARK REGIONAL	WHIPPANY PARK HIGH SCHOOL	27-1990-070 09-12		1.9%	0.3%	11.4%
MORRIS	KINNELON BORO	KINNELON HIGH SCHOOL	27-2460-050 09-12		1.3%	0.1%	13.0%
MORRIS	MONTVILLE TWP	MONTVILLE TOWNSHIP HIGH SCHOOL	27-3340-010 09-12		2.6%	0.4%	10.8%
MORRIS	MOUNTAIN LAKES BORO	MOUNTAIN LAKES HIGH SCHOOL	27-3460-050 09-12		0.9%	0.1%	17.2%
MORRIS	SCH DIST OF THE CHATHAMS	CHATHAM HIGH SCHOOL	27-0785-010 09-12		2.7%	0.6%	15.1%
MORRIS	WEST MORRIS REGIONAL	WEST MORRIS CENTRAL HIGH SCHOOL	27-5660-030 09-12		1.0%	0.4%	15.4%
MORRIS	WEST MORRIS REGIONAL	WEST MORRIS MENDHAM HIGH SCHOOL	27-5660-050 09-12		0.6%	0.4%	13.6%
SOMERSET	BERNARDS TWP	RIDGE HIGH SCHOOL	35-0350-050 09-12		1.4%	0.3%	14.0%
SOMERSET	WATCHUNG HILLS REGIONAL	WATCHUNG HILLS REGIONAL HIGH SCHOOL	35-5550-050 09-12		3.1%	0.3%	15.1%
UNION	BERKELEY HEIGHTS TWP	GOVERNOR LIVINGSTON HIGH SCHOOL	39-0310-005 09-12		2.9%	0.1%	11.4%
UNION	CRANFORD TWP	CRANFORD HIGH SCHOOL	39-0980-030 09-12		3.6%	0.1%	17.0%
UNION	WESTFIELD TOWN	WESTFIELD SENIOR HIGH SCHOOL	39-5730-050 09-12		2.6%	0.2%	17.3%