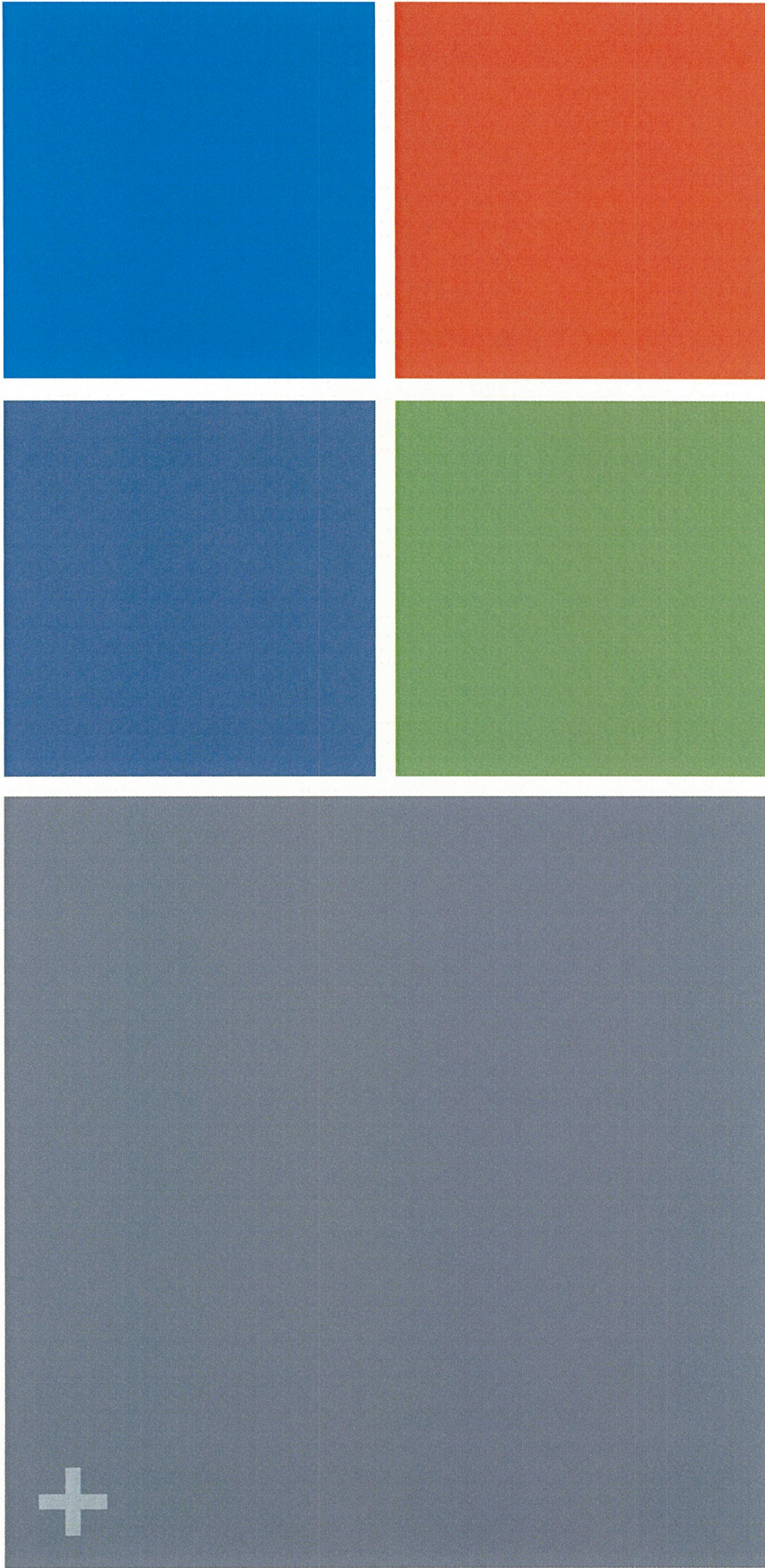


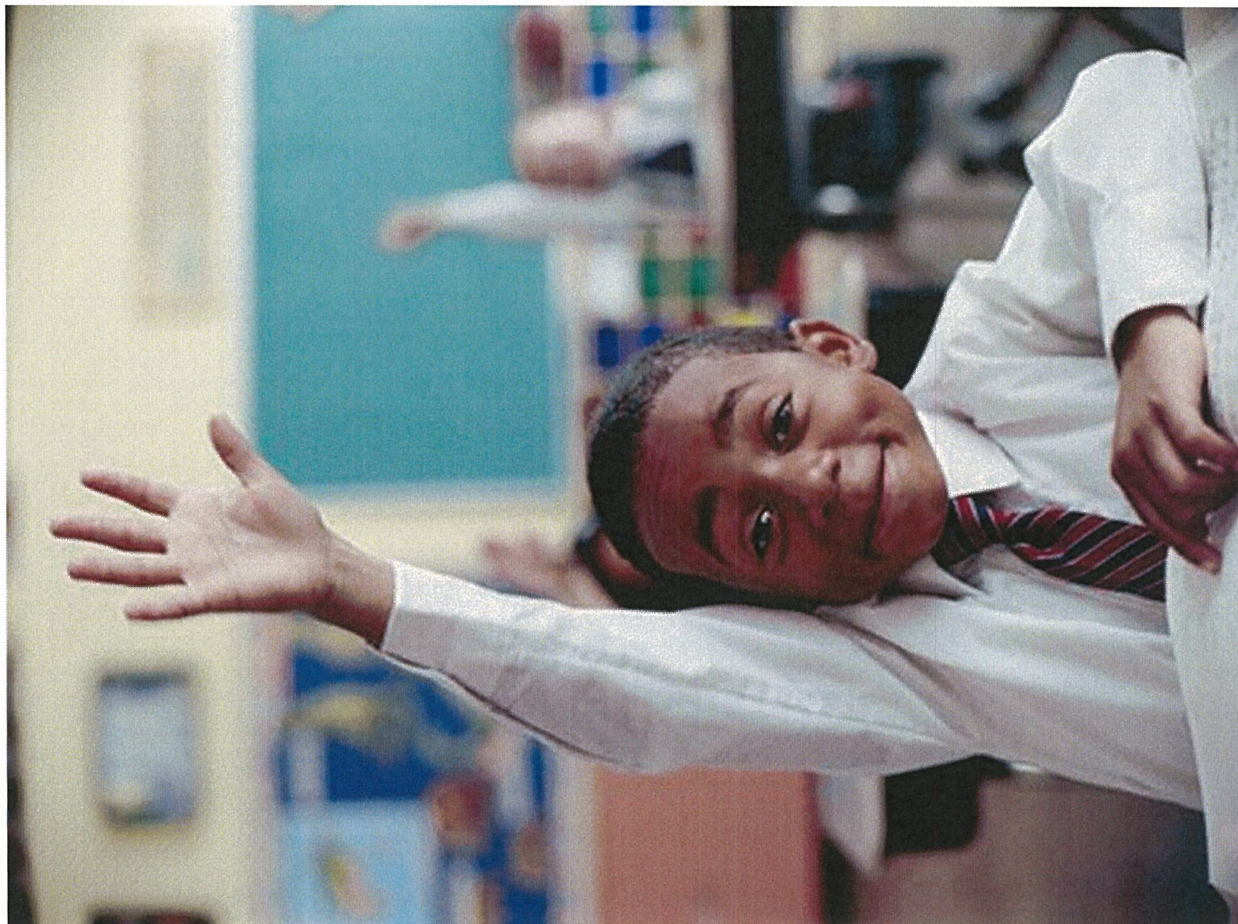
APPENDIX



On the Move

Newark Public Schools

Presentation to the Joint Committee on the Public Schools
January 6, 2015

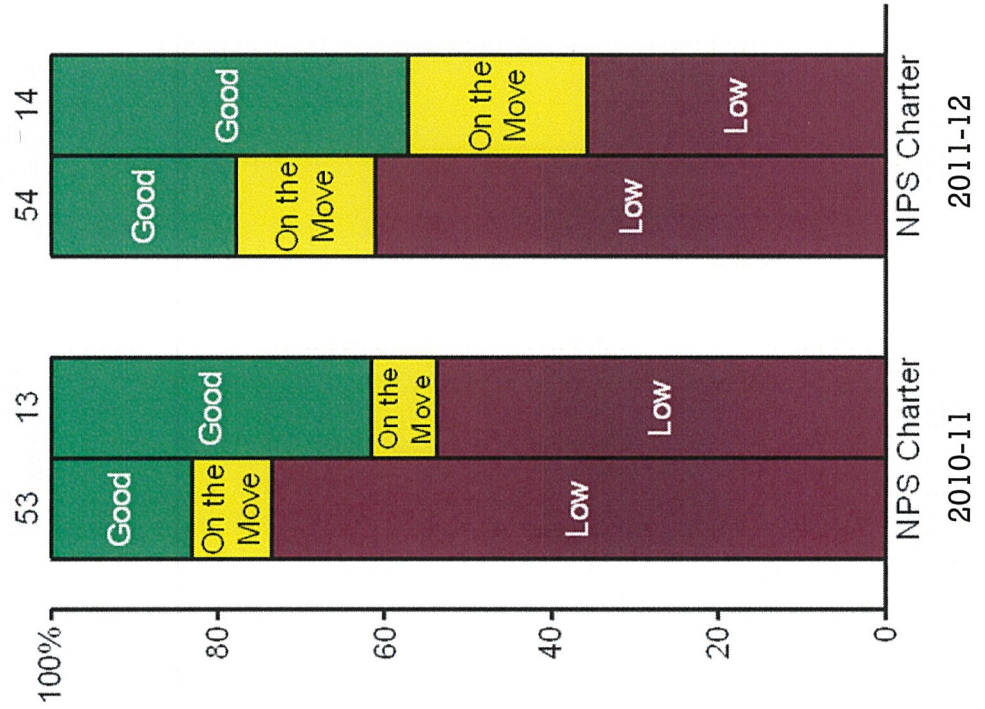


Contents

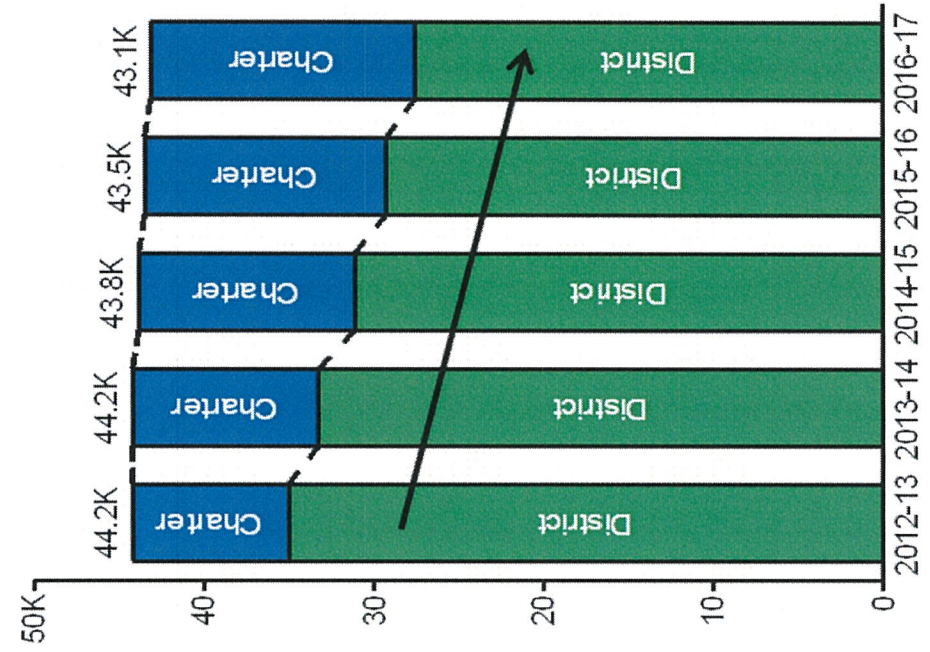
- State of Affairs
- Reform Efforts
 - Phase One
 - One Newark
- Misconceptions Dispelled
- Successes

+ State of Affairs: Poor Performance

K-8 Performance: NPS vs. Charter

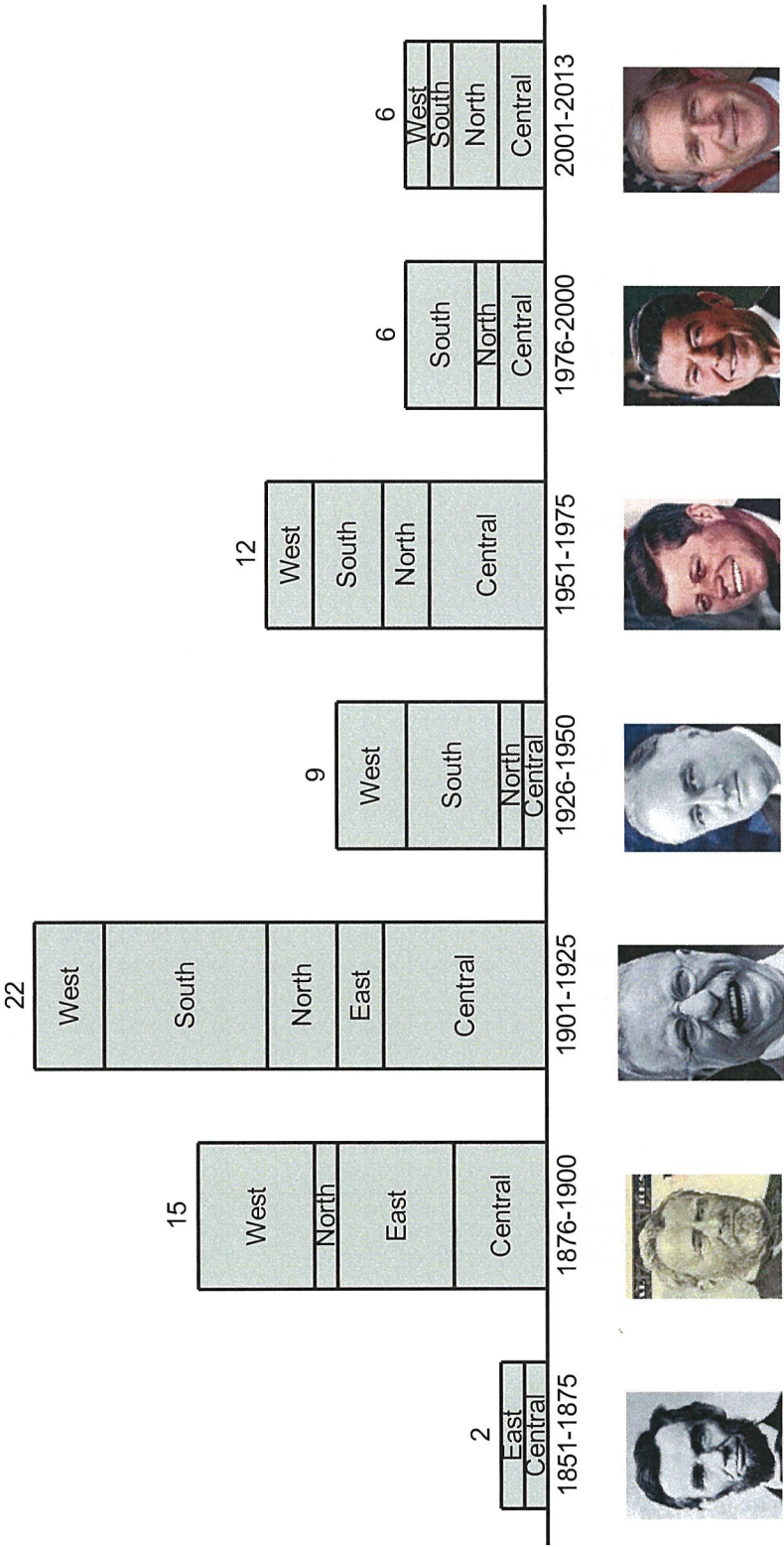


K-12 Enrollment Trends



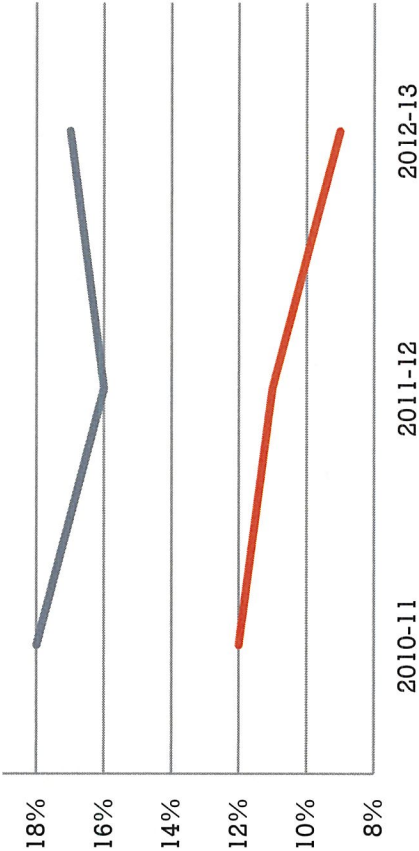
+ State of Affairs: Inefficiency

NPS Buildings by Construction Date

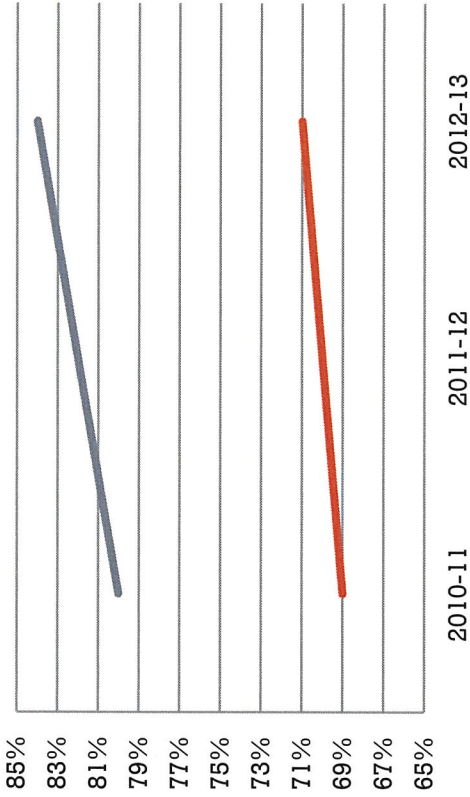


+ State of Affairs: Inequity

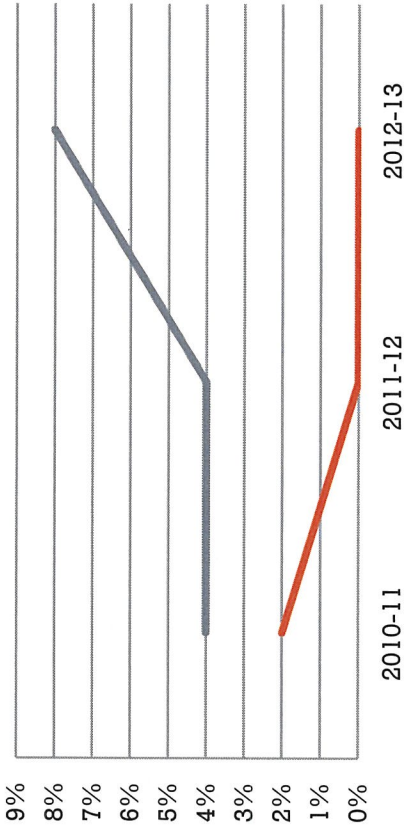
Special Education Students



Free Lunch



English Language Learners



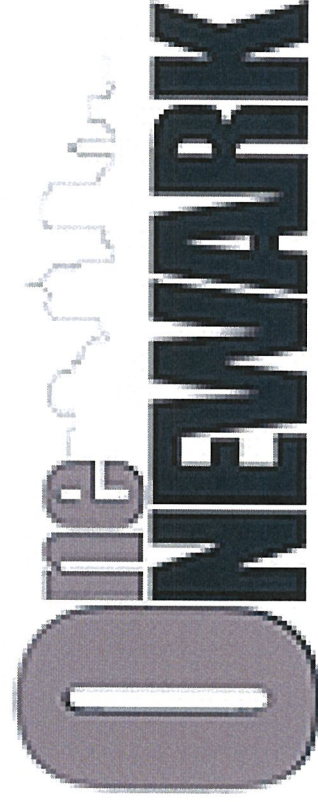


Reforms

- Excellence
- Efficiency
- Equity

+ Our Vision

All students in Newark are in excellent schools and thriving communities, and are on the path to excel in college and 21st century careers.



+ Phase One Reforms (SY 2011-12 & 2012-13)

■ Excellence

- Renew schools Cohort 1 launched
- Signed breakthrough contract with Newark Teachers Union (NTU)
- Implemented new high school models

■ Efficiency

- Conducted budget cuts to right-size District, while maintaining per pupil spending

■ Equity

- Launched high school universal enrollment system
- Renewed focus on Least Restrictive Environment (LRE) for Special Education students
- Revised discipline and retention policies

+ Phase Two Reforms: One Newark (SY 2013-14 & 2014-15)

■ Excellence

- Renew School cohorts 2 and 3 launched
- Implemented new teacher evaluation contract
- Developed family-friendly School Snapshots

■ Efficiency

- Developed a comprehensive long-term facilities plan
- Continued budget reforms, right-sizing while maintaining quality

■ Equity

- Expanded universal enrollment system to include PK-8
- Signed MOUs with charters, totaling 85% of charter seats, increasing access for all Newark students

+ Universal Enrollment Process Recap (SY 2014-15)

92%	Percentage of Newark applicants who received a school match
74%	Percentage of applicants newly matched to one of their top 5 choices
15,327	Total applications from Newark Families
5,500	Total students in search of new options
Constant	Number of K-8 siblings united in a single school
Constant	Number of families attending school <1 mile from home



Dispelling Misconceptions

+ Misconception: Widespread School Closures

■ **One Newark Portfolio Shifts Occurred Across the District. However, the number of actual closures is limited to 1.**

■ **Excellence – How can we manage our facilities to improve student outcomes?**

- Consolidate Early Childhood centers, to improve classroom quality and increase professional development opportunities
- Revitalize Comprehensive High Schools through re-siting to preserve legacy campuses
- Renew 19 Schools

■ **Efficiency – How do we keep facilities operating in the most cost effective manner?**

- Close (Dayton Street) and re-site (Miller) schools in areas with dwindling population
- Lease (Burnet) and sell (18th Avenue) facilities in need of serious repair
- Repurpose and maximize facilities for additional uses
- Newark Vocational has student functions and serves as the Enrollment Center
- Newton Street was transformed as a young adult learning center

■ **Equity – How do we ensure that every neighborhood has high-quality options?**

- Guide charter organizations into the city's neighborhoods with greatest need
- Three high performing charters (TEAM, NorthStar, and Newark Legacy) launched in district schools experiencing declining enrollment

+ Misconception: No Community Input

- Over 100 community forums held, including over 30 school-based meetings at schools impacted by One Newark
 - Plan adjusted to incorporate community feedback
- Community Review Committee established with SAB, community, and parent representation
 - Launched to initially determine shuttle routes and design safe passages for students impacted by One Newark
 - Work expanded over the school year to design and offer feedback on additional initiatives including informing the design of the Universal Enrollment family survey

+ Misconception: Universal Enrollment Impacts

■ **Equity:**

- Universal Enrollment expands information about and access to ALL families, through one central application
- Universal Enrollment holds participating charter schools to the same enrollment standards as District public schools
- Universal Enrollment considers multiple factors in placement:
 - Preference
 - Sibling placement
 - Geographic location
 - Students with Individual Education Plans (IEPs)
 - Students who qualify for free lunch



Successes

+ Key Successes (2011-Present)

- **Early Childhood:**
 - 1,000 new early childhood seats
 - \$7 million Head Start grant
- **K-8 Performance Gains:**
 - “Good” K-8 schools increased from 14 to 20
 - “On the move” schools increased from 6 to 12
 - Significant gains in reading & math for 1st generation Renew Schools
- **High School Graduation:**
 - 11% increase in pass rate for HSPA Graduation Test
 - 9% increase in overall graduation rate
 - 500 more high school graduates
- **Talent (SY 2013-14 to 2014-15):**
 - Retained approx. 95% of our highest performing teachers
 - Exited approx. 40% of lowest performers