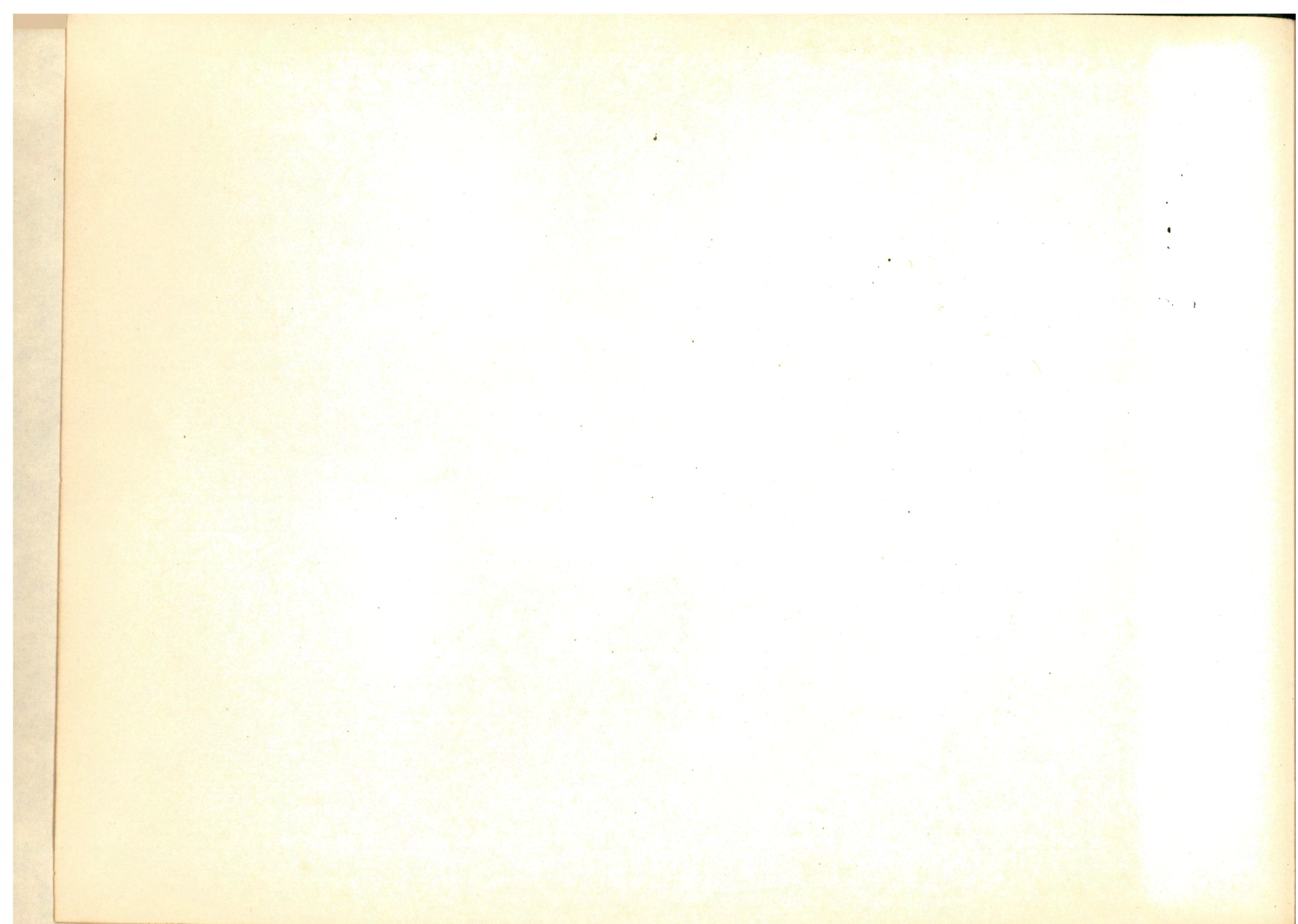


NEW JERSEY STATE LIBRARY

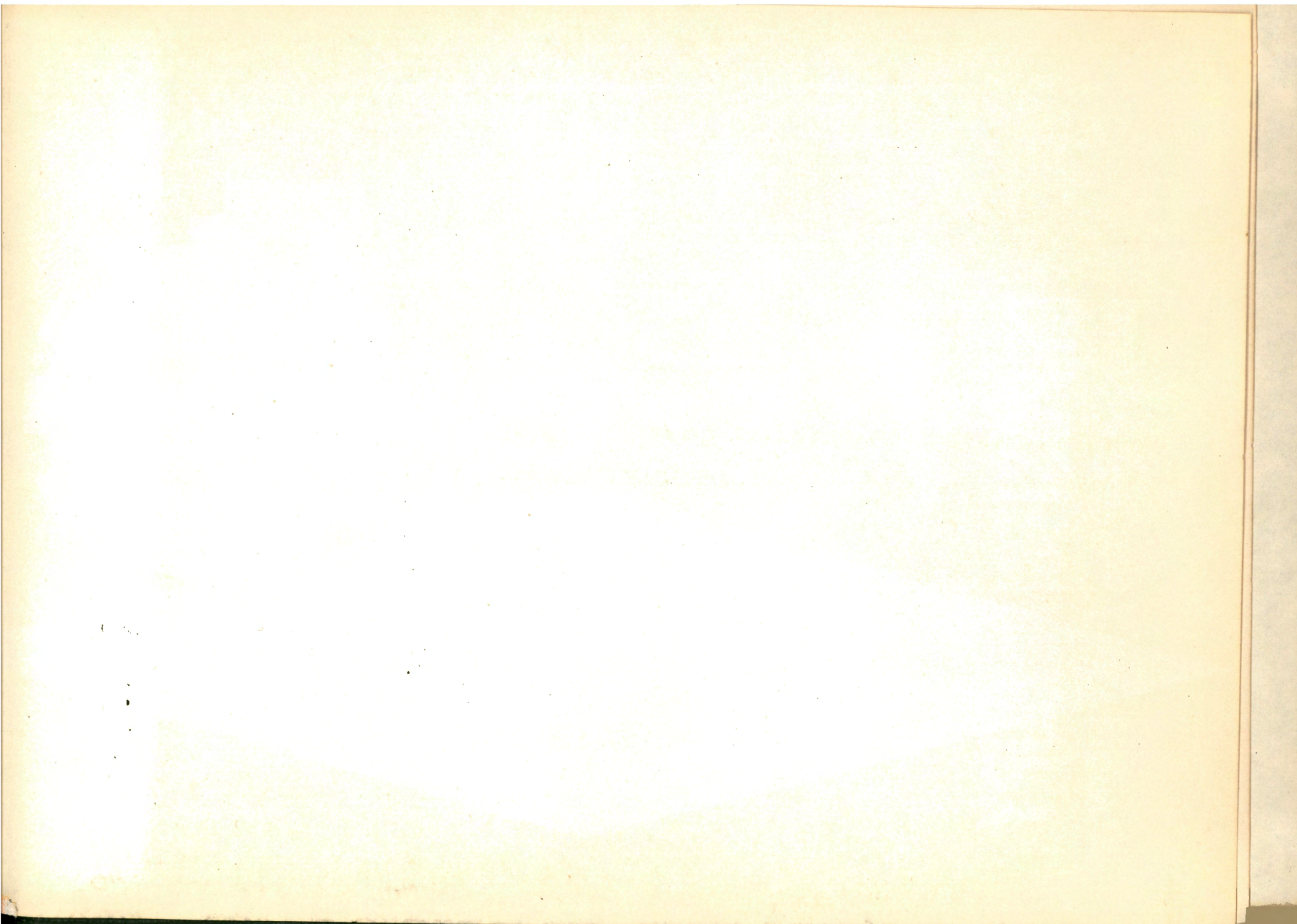


3 3009 00510 7422

PROPERTY OF
RECEIVED
DEC 28 1960
Division of State Library,
Archives and History
TRENTON





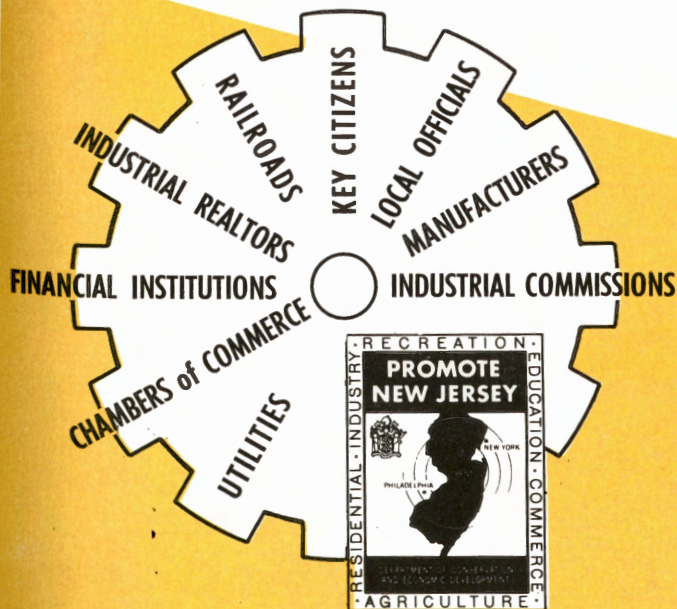


New Jersey. Bureau of Planning and Commerce. State Promotion
Section.

New Jersey Industrial Guide

151
6637

Yours ... for help in plant location



974.90

I42

1957a

copy 1

NEW JERSEY'S "INDUSTRIAL DEVELOPMENT FAMILY"

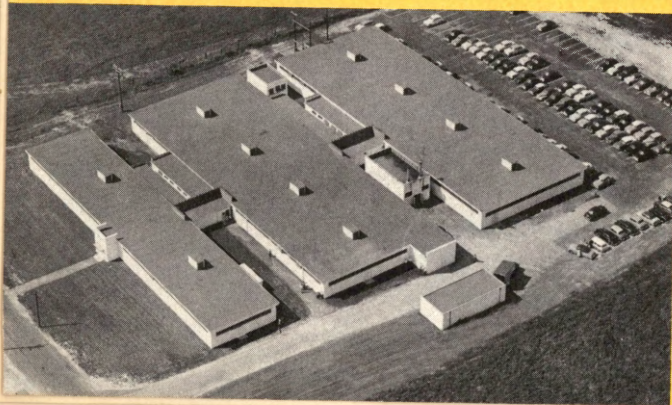
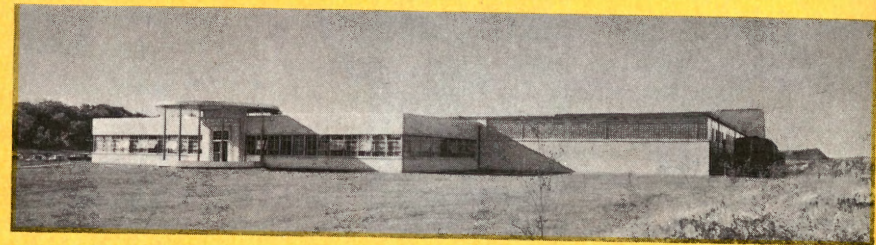
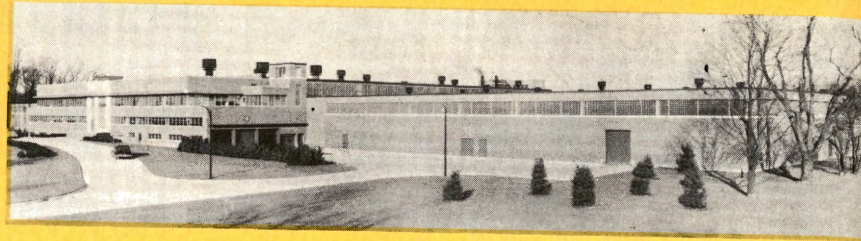
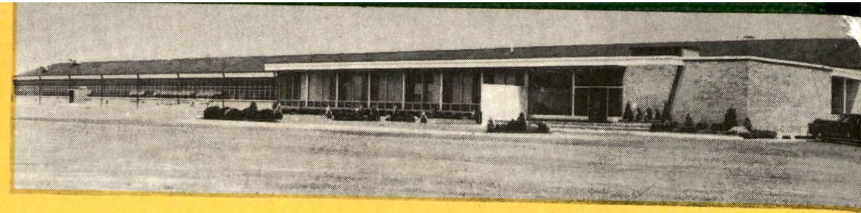
New Jersey's "industrial development family" is an informal organization of specialists whose combined knowledge covers every aspect of industrial location.

Whether it is labor, taxation, utility services and rates, water, transportation, or an intimate knowledge of local conditions, there is someone in this group of several hundred experts who can give you the complete and authoritative answer.

Through the State Promotion Section, the specialized knowledge of this group is available to you without cost and in complete confidence.

DEPOSITORY COPY

Do Not Remove From Library



A long industrial tradition

Even before the Revolution, New Jersey was secretly making iron and other goods in defiance of British prohibition. After the war, Alexander Hamilton was eager to build up American manufacturing and founded the new nation's first industrial community at what is now Paterson.

From the start industry prospered here, and the State became a leader in the metal and textile fields — later in machinery, chemicals, oil refining, electrical and electronic equipment.

For today's highly-specialized manufacturers, this means that materials of all kinds, semi-finished parts and sub-assemblies are readily available from nearby suppliers.

It also means a vast reservoir of capable labor —

men and women who have grown up in an industrial tradition. They are familiar with manufacturing processes, and readily acquire new skills to supplement those they already possess.

Such people are not confined to the larger communities. You find them also in the smaller towns all over the state. For the most part they own their own homes, either in town or on a few acres nearby. They are thrifty, hard working, self respecting, dependable.

New Jersey labor is not only well paid, but is also highly productive. Records show lower production costs and higher yield per wage-dollar than in states where wages are lower and labor correspondingly less efficient.



Good labor relations

The relationship between labor and management in New Jersey is singularly harmonious and cooperative.

Both state and local governments have had long experience with labor problems and have learned to deal with them before they become acute.

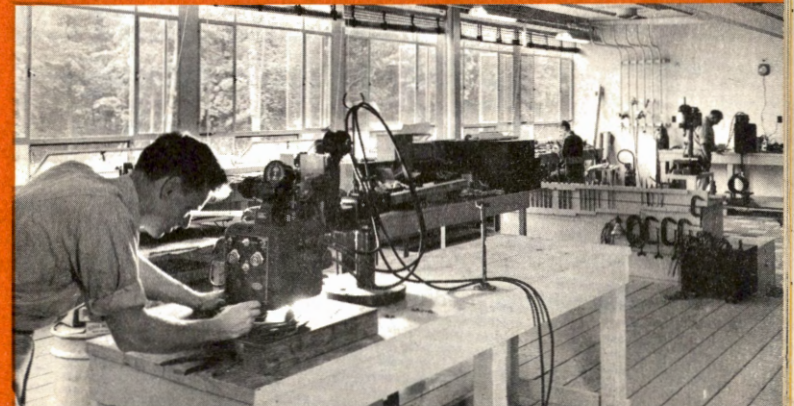
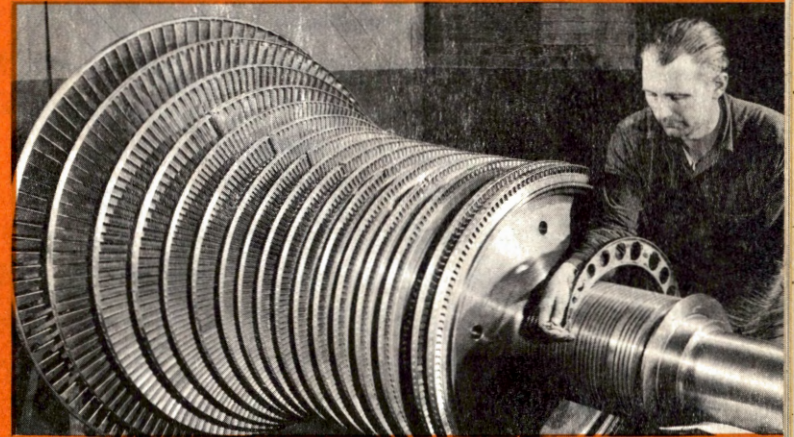
In 1941, there was established the State Board of Mediation, consisting of seven members representing management, labor and the public, to promote the voluntary mediation, conciliation and arbitration of labor disputes.

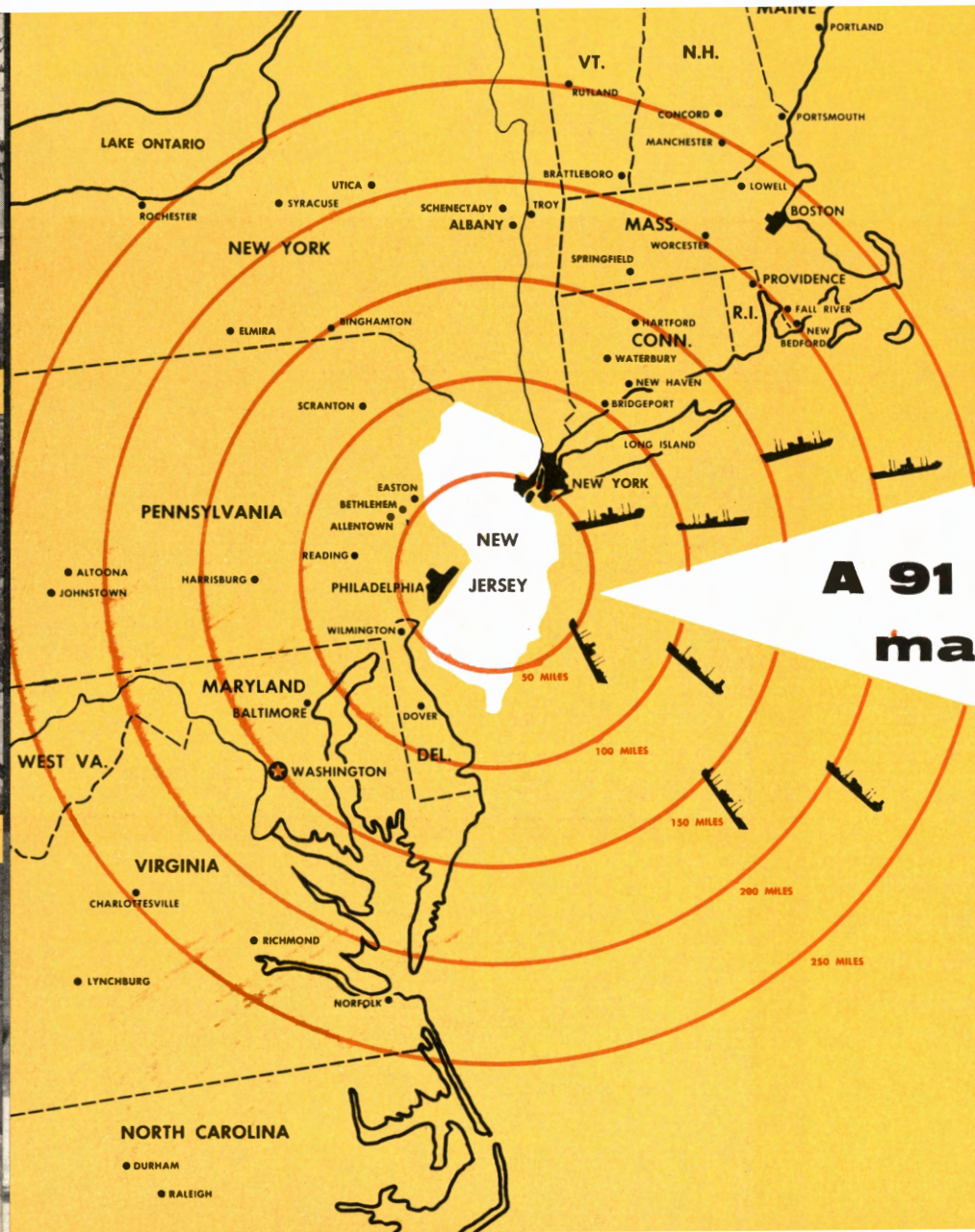
A second important step was taken in 1947 with the establishment of an Institute of Management and Labor Relations. With centers throughout the state, the Institute carries on programs of instruction designed to bring about a clearer understanding of mutual problems and obligations, and to promote harmony and cooperation between management and labor.

Trained workers are good workers

Another reason for the high productivity of New Jersey workers is that they are better trained. New Jersey spends more than twice as much per pupil on vocational training as the average of the other leading industrial states. New Jersey has 20 vocational schools covering all trades. Where possible, the curriculum is geared to the special requirements of the area, so as to prepare graduates for immediate employment in local factories. Adult educational courses are also offered in over a hundred schools.

In addition to the public school programs, there are many private trade and technical schools, while the state's colleges and universities provide training for the professions, advanced research work and business administration.





**A 91 billion dollar
market basket**

One of the most important factors in locating a manufacturing or distributing plant is its access to buyer power. In this respect New Jersey is unique.

With mid-New Jersey as its center, draw a circle with a 250-mile radius. (250 miles is roughly overnight delivery distance.) Within the twelve states and the District of Columbia intersected by this circle are 52 million people with a net effective buying income of 91 billion dollars.

**NOWHERE ELSE IN THE WORLD
CAN YOU FIND ANYTHING LIKE THIS
BUYING POWER CONCENTRATED
IN A SIMILAR RADIUS.**

Moreover, this rich market is like a target, with its greatest wealth concentrated in the bullseye. New Jersey itself has one of the highest per family net buying incomes in the nation—\$6,791 per family. And immediately adjoining are the New York Metropolitan area and the Philadelphia Metropolitan area.

This means 18 million people, with a net disposable income of \$36 billion concentrated right in the center of your target.

From any point in central New Jersey it is little more than an hour to the business center of either New York or Philadelphia — a great advantage to any business which maintains a show room or sales office in these cities.



Crossroads of the East

Not only is New Jersey the heart of the world's richest market, it is also in a most strategic position to serve all other markets — nation-wide or world-wide. Here is to be found the world's greatest concentration of transportation facilities. From New Jersey you can serve the greatest number of people, in the shortest time and at the lowest cost.

TRANSPORTATION TO EVERYWHERE

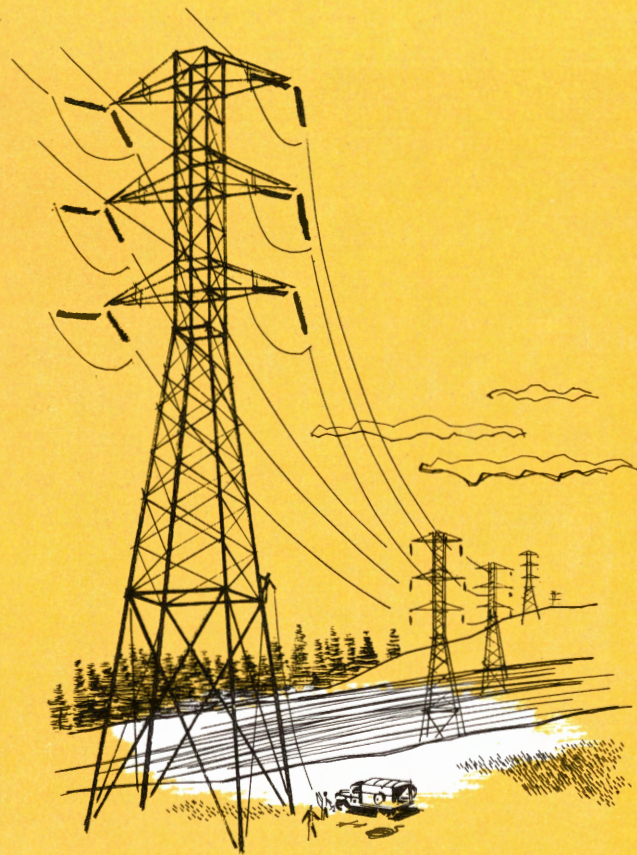
BY HIGHWAY. New Jersey has an excellent network of highways, including the New Jersey Turnpike, main artery to New York and New England, and the West and South. The beautifully landscaped Garden State Parkway parallels the coast the full length of the state.

BY RAIL. Fourteen railroads serve New

Jersey, eight of which are trunk lines, fanning out from the Port of New York to every part of the country. Here is the greatest concentration of trackage in the United States.

BY WATER. On the East is the world's greatest seaport, operated under a bi-state authority representing New Jersey and New York. On the other side of the State, the Delaware River Port, also operated by a joint port commission, stretches for 135 miles along the New Jersey and the Pennsylvania sides.

BY AIR. There are over 100 active airports, including the Newark Airport, one of the three major ports in the New York Metropolitan Area, with frequent flights to all parts of the country. At Teterboro, N.J., is the Area's principal freight airport.



Power unlimited

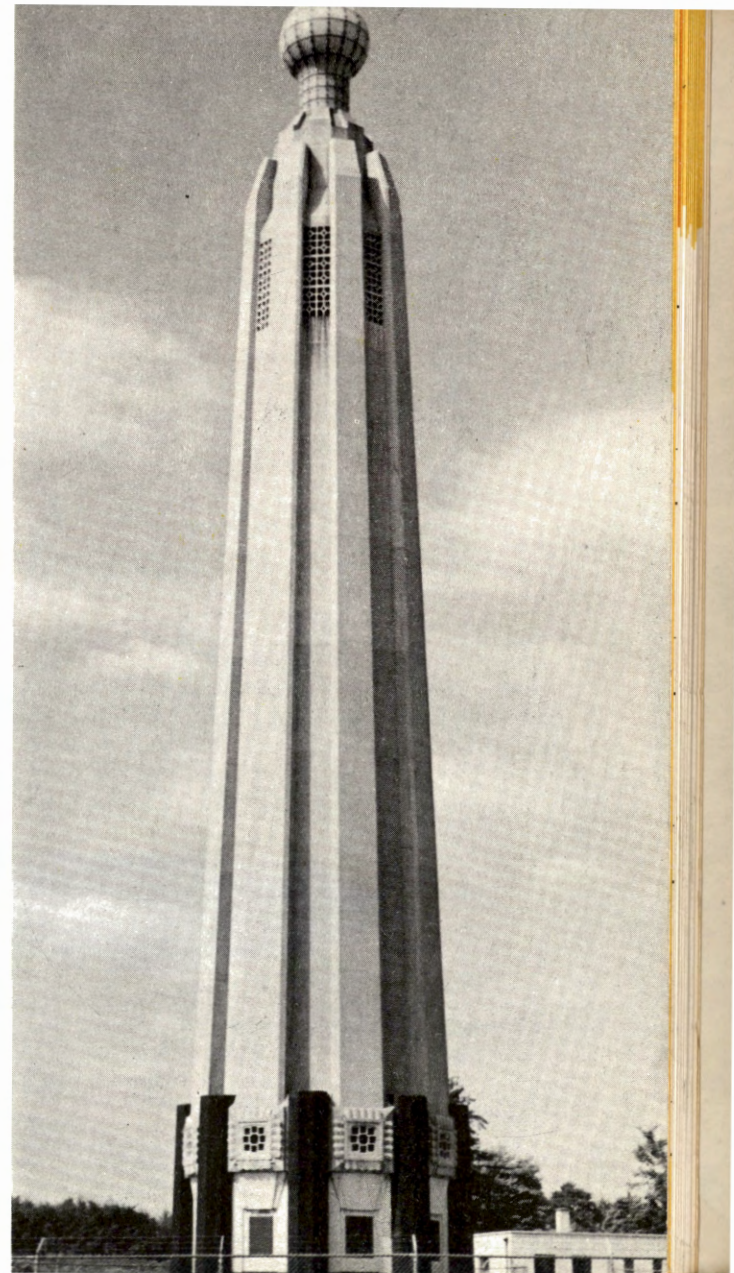
The public utilities serving New Jersey are quite familiar with industrial requirements and are most cooperative in meeting the needs of a new industry. There are ample generating facilities within the State and the various systems are so inter-connected with each other and with those in neighboring states as to minimize the danger of shortage even in an emergency. Industrial power rates are favorable.

Anthracite and bituminous coal are available from nearby fields and large quantities of coke are produced in New Jersey.

“The Cradle of industrial research”

The Edison Memorial Tower at Menlo Park is an expression of the high regard in which New Jersey holds industrial exploration. Many of the great discoveries that have revolutionized chemistry, electronics, aviation and other modern industries have been born in New Jersey laboratories. There are over 400 institutions in the State working on industrial problems. Their combined budgets are over \$150 million. Many of these institutions are available to the smaller manufacturer who is not yet ready for his own research facilities.

Because of its long record of achievement in this field, New Jersey has rightly been called, “the cradle of industrial research”. It provides a stimulating environment for any forward-looking industry.







Government friendly to business

The friendly attitude toward industry in New Jersey is based on the general recognition that New Jersey is primarily an industrial state and that state and municipalities will prosper as industry prospers. It is reflected in friendly cooperation, good industrial legislation and favorable taxation.

A new State Constitution, geared to the requirements of a technological age, was adopted in 1947 and has streamlined the functions of government, resulting in more efficiency and economies.

Citizen leagues, chambers of commerce, manufacturers associations, civic clubs and tax-payers associations

all keep a watchful eye on the public purse . . . a constant vigilance that taxes in New Jersey buy essential services.

New Jersey has taken the leadership in planning in the United States. Business and industry benefit most from a well-planned and orderly community setting. It is only through the proper planning of community development that this orderly pattern can be established.

Under State's leadership municipal planning in New Jersey is progressing at a rate designed to insure complete statewide harmony.

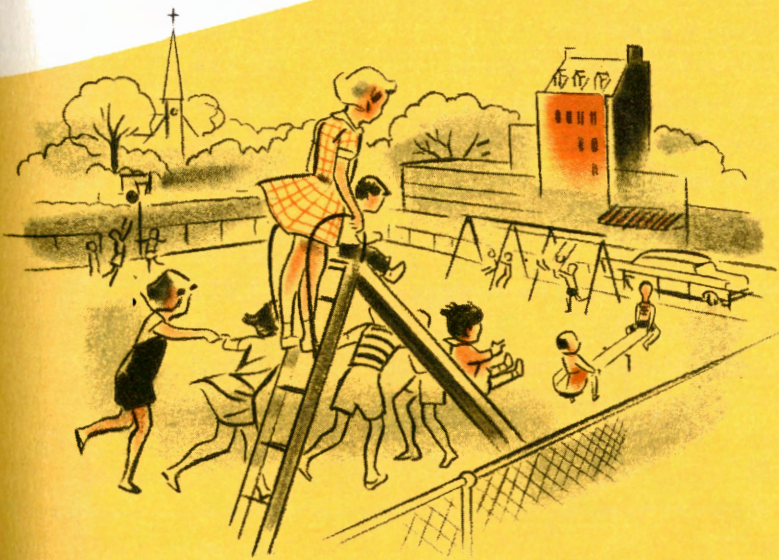
A good place to live...

It is always easier to attract and hold good people if your plant is in a place where people like to live. One proof that people like to live in New Jersey is that 250,000 workers and executives commute from here every day to New York and Philadelphia.

They prefer to live here because they like New Jersey's friendly community life, its fine schools, its recreational facilities and its freedom from congestion.

...with plenty of space

There is a strong tendency today for both businesses and people to move out of congested areas into suburban and rural areas. In New Jersey you can still find plenty of locations near smaller towns or out in the country, yet on or near highways and a railroad, and with plenty of good labor within easy driving distance.



*Employment in Manufacturing Industries of New Jersey, Sept. 1955



DURABLE GOODS INDUSTRIES

	Number of Employees	% of Total
Electrical Goods and Machines	119,795	14.6
Machinery (except electrical)	71,020	8.6
Fabricated Metal Products	51,755	6.3
Primary Metal Products	37,413	4.5
Stone, Clay and Glass	34,250	4.2
Instruments and Clocks	25,636	3.1
Aircraft Industry	25,487	3.1
Automobile Industry	17,790	2.2
Shipbuilding Industry	11,642	1.4
Furniture and Fixtures	7,780	0.9
Lumber and Wood Products	5,002	0.6
Miscellaneous Vehicles	830	0.1
TOTAL DURABLE	408,400	49.6

NON-DURABLE GOODS INDUSTRIES

	Number of Employees	% of Total
Chemical Industry	87,705	10.6
Apparel and Needle Products	82,529	10.0
Food and Kindred Products	56,700	6.9
Textile Mill Products	48,348	5.9
Paper and Allied Products	26,387	3.2
Printing and Publishing	26,161	3.2
Rubber Industry	16,385	2.0
Petroleum and Coal Products	15,873	1.9
Leather Industry	12,058	1.5
Tobacco Manufacturing	3,384	0.4
TOTAL NON-DURABLE	375,530	45.6
Miscellaneous Manufacturing	39,365	4.8
Total Manufacturing	823,295	100.0

*"Covered Employees" only.

A digest of the Labor Market in New Jersey, Sept. 1955

COUNTIES	Est. Popula- tion ⁽¹⁾	Population per Square Mile ⁽¹⁾	Total Covered Employment	Covered Jobs in all Mfg. Ind.	Mfg. Workers as % of County Workers	% of all Workers in Mfg. Ind.	Mfg. Workers Per Sq. Mi. Land Area	% of all Mfg. Workers by Counties
Northern Group								
Bergen	632,800	2,691.8	149,171	85,996	57.6	5.7	365.8	10.4
Essex	970,500	7,615.3	299,073	141,253	47.2	9.5	1,108.7	17.2
Hudson	675,000	15,306.1	217,896	141,327	64.9	9.5	3,204.7	17.2
Passaic	371,500	1,932.9	123,648	79,446	64.3	5.3	413.4	9.6
Union	455,000	4,400.8	144,852	86,149	59.5	5.8	833.2	10.5
Group Total	3,104,800	4,421.5	934,640	534,171	57.2	35.8	760.7	64.9
Central Group								
Mercer	256,900	1,136.7	72,479	41,253	56.9	2.8	182.5	5.0
Middlesex	325,300	1,053.5	96,071	67,380	70.1	4.5	218.2	8.2
Monmouth	257,000	538.8	42,329	14,569	34.4	1.0	30.5	1.8
Somerset	115,000	376.9	25,145	16,212	64.5	1.0	53.1	2.0
Group Total	954,200	701.8	236,024	139,414	59.1	9.3	105.9	17.0
Northwest Group								
Hunterdon	46,300	105.9	8,217	4,067	49.5	0.3	9.3	0.5
Morris	195,000	408.2	38,412	18,682	48.6	1.2	39.1	2.3
Sussex	38,000	72.2	5,672	2,262	39.9	0.2	4.3	0.3
Warren	59,000	163.0	14,550	10,859	74.6	0.7	30.0	1.3
Group Total	338,300	187.6	66,851	35,870	53.6	2.4	19.9	4.4
Southern Group								
Atlantic	147,300	260.5	36,440	7,060	19.4	0.5	12.5	0.8
Burlington	161,700	197.4	24,168	13,825	57.2	0.9	16.9	1.7
Camden	342,500	1,541.7	83,713	47,466	56.7	3.2	213.6	5.8
Cape May	42,500	160.2	6,509	1,444	22.2	0.1	5.4	0.2
Cumberland	98,000	195.1	29,975	19,903	66.4	1.3	39.6	2.4
Gloucester	106,300	323.5	17,313	10,480	60.5	0.7	31.9	1.3
Ocean	71,000	110.8	8,890	1,461	16.4	0.1	2.3	0.2
Salem	54,200	158.0	15,160	12,068	79.6	0.8	35.2	1.4
Group Total	1,023,500	277.6	222,168	113,707	51.2	7.6	30.8	13.8
UNDISTRIBUTED								
State Total	5,420,800	721.9	31,563 1,491,246	133 823,295	0.4 55.2	(X) 55.2	109.6	(X) 100.0

(1) July 1, 1955
(X) less than 0.05%

Manufacturing Industries in New Jersey by value added by manufacture



Rank in N. J.		Value Added By Mfg. (\$000)	Rank in U. S.	% of U. S.
1.	Chemicals and Allied Products	1,121,765	1	11.9
2.	Electrical Machinery	774,794	4	10.5
3.	Food and Kindred Products	650,466	6	4.9
4.	Machinery (Except Electrical)	528,527	10	4.3
5.	Transportation Equipment	481,257	8	3.5
6.	Fabricated Metal Products	419,672	7	5.5
7.	Apparel and Related Products	318,725	3	6.2
8.	Primary Metals Products	288,668	10	3.1
9.	Textile Mill Products	275,622	7	5.8
10.	Miscellaneous Manufacturing	252,617	6	5.6
11.	Stone, Clay and Glass	221,271	6	5.8
12.	Paper and Allied Products	206,225	9	4.5
13.	Instruments and Related Products	194,243	3	9.1
14.	Printing and Allied Products	176,551	8	2.8
15.	Petroleum and Coal Products	150,048	8	5.8
16.	Rubber Products	96,467	7	5.1
17.	Furniture and Fixtures	56,322	12	2.9
18.	Leather and Leather Products	56,178	10	3.4
19.	Tobacco Manufacturers	32,993	6	3.3
20.	Lumber and Wood Products	28,759	28	0.9
	ALL MANUFACTURING	6,331,178	7	5.4

SOURCE: 1954 Census of Manufacturers: U.S. Bureau of the Census

COMPILED BY: Research & Statistics Section

Dept. of Conservation & Economic Development



ATLANTIC COUNTY

* **Population:** 147,300

County Seat: Mays Landing (Hamilton Township)

(1) Major Municipalities: Atlantic City 64,040; Pleasantville City 13,770; Hammonton Town 9,341; Ventnor City 8,456.

September 1955	Number	% of employed persons	% of county population
**Workers employed in all industries	36,440	100.0	24.7
Workers employed in manufacturing	7,060	19.4	4.8
Workers employed in trade	11,756	32.3	8.0
Workers employed in Service Ind.	10,735	29.5	7.3
Mfg. workers per square mile	12.48		

7,060 Industrial Workers employed in 178 Manufacturing Plants

	Number	% of County Total	% of Industry Total in State
Apparel and Related Goods	3,452	48.9	4.2
Food Products	1,377	19.5	2.4
Stone, Clay and Glass	692	9.8	2.0
Printing and Publishing	351	5.0	1.3
Basic Lumber	245	3.5	5.0
Textile Mills	196	2.8	0.4
Shipbuilding	111	1.6	1.0
All other	636	8.9	—
All Manufacturing	7,060	100.0	0.8

Compiled by Research and Statistic Section,
Department of Conservation and Economic Development.

* Population Estimates: July 1, 1955, by Research and Statistic Section, Department of Conservation and Economic Development.

** Covered employment only from data supplied by N. J. Department of Labor and Industry.

(1) Major in the sense of population.



BERGEN COUNTY

**85,996 Industrial Workers employed in
1,267 Manufacturing Plants**

* Population 632,800

County Seat: Hackensack City

(1) Major Municipalities: Teaneck Township 38,694;
Hackensack City 32,203; Garfield City 30,172;
Fairlawn Boro 29,286.

September 1955	Number	% of employed persons	% of county population
**Workers employed in all industries	149,171	100.0	23.6
Workers employed in manufacturing	85,996	57.6	13.6
Workers employed in trade	28,335	19.0	4.5
Mfg. workers per square mile	365.78		

	Number	% of County Total	% of Industry Total in State
Aircraft Industry	19,465	22.6	76.4
Instrument and Clocks	9,753	11.3	38.0
Textile Mills	6,588	7.6	13.6
Apparel	5,871	6.8	7.1
Chemicals	4,771	5.5	5.4
Paper	4,695	5.5	17.8
Electrical Goods & Machines	4,565	5.3	3.8
Machinery (ex. elec.)	4,197	4.9	5.9
Automobile Industry	4,035	4.7	22.7
Primary Metal Industry	3,938	4.6	10.5
Fabricated Metal Products	3,680	4.3	7.1
Printing and Publishing	3,601	4.2	13.8
Food	2,541	3.0	4.5
Stone, Clay and Glass	1,626	1.9	4.7
Leather Goods	1,164	1.4	9.7
All Other	5,506	6.4	—
All Manufacturing	85,996	100.0	10.4

Compiled by Research and Statistic Section,
Department of Conservation and Economic Development.

* Population Estimates: July 1, 1955, by Research and Statistic Section, Department of Conservation and Economic Development.

* Covered employment only from data supplied by N. J. Department of Labor and Industry.

(1) Major in the sense of population.



BURLINGTON COUNTY

**13,825 Industrial Workers employed in
187 Manufacturing Plants**

	Number	% of County Total	% of Industry Total in State
Primary Metal Industries	4,807	34.8	12.8
Textile Mills	1,608	11.6	3.3
Apparel	1,321	9.6	1.6
Electrical Goods and Machines	1,015	7.3	0.8
Machinery (ex. elec.)	797	5.8	1.1
Fabricated Metal Products	711	5.1	1.4
Chemicals	540	3.9	0.6
Rubber	446	3.2	2.7
Food	343	2.5	0.6
Ordinance	323	2.3	43.7
Instruments and Clocks	245	1.8	1.0
Leather	238	1.7	2.0
Basic Lumber	235	1.7	4.7
All Other	1,196	8.7	—
All Manufacturing	13,825	100.0	1.7

* Population 161,700

County Seat: Mount Holly Township

(1) Major Municipalities: Burlington City 13,737; Moorestown Township 11,203; Mount Holly Township 10,681.

September 1955	Number	% of employed persons	% of county population
**Workers employed in all industries	24,168	100.0	14.9
Workers employed in manufacturing	13,825	57.2	8.5
Workers employed in trade	4,250	17.6	2.6
Mfg. workers per square mile	16.87		

Compiled by Research and Statistic Section,
Department of Conservation and Economic Development.

* Population Estimates: July 1, 1955, by Research and Statistic Section, Department of Conservation and Economic Development.

** Covered employment only from data supplied by N. J. Department of Labor and Industry.

(1) Major in the sense of population.



CAMDEN COUNTY

47,466 Industrial Workers employed in 374 Manufacturing Plants

* Population 342,500

County Seat: Camden City

(1) Major Municipalities: Camden City 132,071; Pennsauken Township 26,905; Collingswood Boro 16,842; Gloucester City 15,944; Haddon Township 13,975.

September 1955	Number	% of employed persons	% of county population
**Workers employed in all industries	83,713	100.0	24.4
Workers employed in manufacturing	47,466	56.7	13.9
Workers employed in trade	15,836	18.9	4.6
Mfg. workers per square mile	213.62		

	Number	% of County Total	% of Industry Total in State
Electrical Goods and Machines	16,352	34.5	13.6
Food	7,634	16.1	13.5
Shipbuilding Industry	6,376	13.4	54.8
Chemicals	2,630	5.5	3.0
Paper	2,376	5.0	9.0
Fabricated Metal Products	1,980	4.2	3.8
Apparel	1,727	3.6	2.1
Machinery (ex. elec.)	1,360	2.9	1.9
Printing and Publishing	1,308	2.8	5.0
Stone, Clay and Glass	1,132	2.4	3.3
Leather	814	1.7	6.8
Tobacco	752	1.6	22.2
Primary Metal Industries	718	1.5	1.9
All Other	2,307	4.8	—
All Manufacturing	47,466	100.0	5.8

Compiled by Research and Statistic Section,
Department of Conservation and Economic Development.

* Population Estimates: July 1, 1955, by Research and Statistic Section, Department of Conservation and Economic Development.

** Covered employment only from data supplied by N. J. Department of Labor and Industry

(1) Major in the sense of population.



CAPE MAY COUNTY

* **Population:** 42,500

County Seat: Cape May Court House (Middle Township)

(1) **Major Municipalities:** Ocean City, 7,149; Wildwood City, 5,887; Middle Township (Cape May Court House) 5,211.

September 1955	Number	% of employed persons	% of county population
**Workers employed in all industries	6,509	100.0	15.3
Workers employed in manufacturing	1,444	22.2	3.4
Workers employed in trade	2,208	33.9	5.2
Workers employed in service industries	918	14.1	2.2
Mfg. workers per square mile	5.42		

1,444 Industrial Workers employed in 43 Manufacturing Plants

	Number	% of County Total	% of Industry Total in State
Food	429	29.7	0.8
Apparel	210	14.5	0.3
Stone, Clay and Glass	176	12.2	0.5
Basic Lumber	137	9.5	2.7
Rubber	125	8.7	0.8
Printing and Publishing	111	7.7	0.4
Instruments and Clocks	66	4.6	0.3
Shipbuilding	63	4.4	0.5
All Other	127	8.7	—
All Manufacturing	1,444	100.0	0.2

Compiled by Research and Statistic Section,
Department of Conservation and Economic Development.

* Population Estimates: July 1, 1955, by Research and Statistic Section, Department of Conservation and Economic Development.

** Covered employment only from data supplied by N. J. Department of Labor and Industry.

(1) Major in the sense of population.



CUMBERLAND COUNTY

* Population: 98,000

County Seat: Bridgeton City

(1) Major Municipalities: Vineland City 33,287; Bridgeton City 20,072; Millville City 17,660.

September 1955	Number	% of employed persons	% of county population
**Workers employed in all industries	29,975	100.0	30.6
Workers employed in manufacturing	19,903	66.4	20.3
Workers employed in trade	4,632	15.5	4.7
Workers employed in service industries	1,127	3.8	1.2
Mfg. workers per square mile	39.62		

19,903 Industrial Workers employed in 193 Manufacturing Plants

	Number	% of County Total	% of Industry Total in State
Stone, Clay and Glass	8,683	43.6	25.4
Apparel	4,207	21.1	5.1
Food	3,366	16.9	5.9
Textile Mills	1,155	5.8	2.4
Basic Lumber	506	2.5	10.1
Printing and Publishing	416	2.1	1.6
Primary Metal Industry	291	1.5	0.8
Machinery (ex. elec.)	272	1.4	0.4
All Other	1,007	5.1	—
All Manufacturing	19,903	100.0	2.4

Compiled by Research and Statistic Section,
Department of Conservation and Economic Development.

* Population Estimates: July 1, 1955, by Research and Statistic Section, Department of Conservation and Economic Development.

** Covered employment only from data supplied by N. J. Department of Labor and Industry.

(1) Major in the sense of population.



ESSEX COUNTY

**141,253 Industrial Workers employed in
2,369 Manufacturing Plants**

* **Population:** 970,500

County Seat: Newark City

(1) Major Municipalities: Newark City 462,056; East Orange City 82,461; Irvington Town 61,347.

September 1955	Number	% of employed persons	% of county population
**Workers employed in all industries	299,073	100.0	30.8
Workers employed in manufacturing	141,253	47.2	14.6
Workers employed in trade	66,402	22.2	6.8
Workers employed in finance	26,517	8.9	2.7
Workers employed in service industry	25,140	8.4	2.6
Mfg. workers per square mile	1,108.74		

	Number	% of County Total	% of Industry Total in State
Electrical Goods and Machines	28,599	20.2	23.9
Food	17,181	12.2	30.3
Machinery (ex. elec.)	14,132	10.0	19.9
Chemicals	11,969	8.5	13.6
Fabricated Metal Products	10,776	7.6	20.8
Apparel	10,184	7.2	12.3
Printing and Publishing	5,170	3.7	19.8
Primary Metal Industries	4,567	3.2	12.2
Leather	4,014	2.8	33.3
Instruments and Clocks	3,941	2.8	15.4
Textile Mills	3,822	2.7	7.9
Paper	3,538	2.5	13.4
Aircraft Industry	2,661	1.9	10.4
Stone, Clay and Glass	1,412	1.0	4.1
Furniture	1,116	0.8	14.3
All Other	18,171	12.9	—
All Manufacturing	141,253	100.0	17.2

Compiled by Research and Statistic Section,
Department of Conservation and Economic Development.

* Population Estimates: July 1, 1955, by Research and Statistic Section, Department of Conservation and Economic Development.

** Covered employment only from data supplied by N. J. Department of Labor and Industry.

(1) Major in the sense of population.

GLOUCESTER COUNTY



* **Population:** 106,300

County Seat: Woodbury City

(1) Major Municipalities: Woodbury City 12,427; Deptford Township 9,250; Paulsboro Borough 8,621; Pitman Borough 7,679.

September 1955	Number	% of employed persons	% of county population
**Workers employed in all industries	17,313	100.0	16.3
Workers employed in manufacturing	10,480	60.5	9.9
Workers employed in trade	3,406	19.7	3.2
Mfg. workers per square mile	31.89		

10,480 Industrial Workers employed in 109 Manufacturing Plants

	Number	% of County Total	% of Industry Total in State
Petroleum Refining	4,369	41.7	27.5
Chemicals	2,124	20.3	2.4
Apparel	1,180	11.3	1.4
Fabricated Metal Products	820	7.8	1.6
Food	616	5.9	1.1
Electrical Goods and Machines	454	4.3	0.4
Machinery (ex. elec.)	157	1.5	0.2
Stone, Clay and Glass	125	1.2	0.4
Textile Mills	105	1.0	0.2
All Other	530	5.0	—
All Manufacturing	10,480	100.0	1.3

Compiled by Research and Statistic Section,
Department of Conservation and Economic Development.

* Population Estimates: July 1, 1955, by Research and Statistic Section, Department of Conservation and Economic Development.

** Covered employment only from data supplied by N. J. Department of Labor and Industry.

(1) Major in the sense of population.



HUDSON COUNTY

**141,327 Industrial Workers employed in
2,271 Manufacturing Plants**

	Number	% of County Total	% of Industry Total in State
Electrical Goods and Machines	30,226	21.4	25.2
Apparel	19,606	13.9	23.8
Chemicals	13,383	9.5	15.3
Machinery (ex. elec.)	13,080	9.2	18.4
Food	11,162	7.9	19.7
Fabricated Metal Products	9,110	6.4	17.6
Textile Mills	7,320	5.2	15.1
Paper	5,733	4.0	21.7
Printing and Publishing	4,756	3.4	18.2
Primary Metal Industry	3,802	2.7	10.2
Shipbuilding Industry	3,797	2.7	32.6
Petroleum Industry	3,259	2.3	20.5
Furniture	1,972	1.4	25.3
Leather	1,914	1.4	15.9
Stone, Clay and Glass	1,343	1.0	3.9
All Other	10,864	7.6	—
All Manufacturing	141,327	100.0	17.2

Compiled by Research and Statistic Section,
Department of Conservation and Economic Development.

* Population Estimates: July 1, 1955, by Research and Statistic Section, Department of Conservation and Economic Development.

** Covered employment only from data supplied by N. J. Department of Labor and Industry.

(1) Major in the sense of population.

* Population: 675,000

County Seat: Jersey City

(1) Major Municipalities: Jersey City 308,760; Bayonne City 81,546; Union City 58,017.

September 1955	Number	% of employed persons	% of county population
**Workers employed in all industries	217,896	100.0	32.2
Workers employed in manufacturing	141,327	64.9	20.9
Workers employed in trade	30,456	14.0	4.5
Mfg. workers per square mile	3,204.69		



HUNTERDON COUNTY

**4,067 Industrial Workers employed in
58 Manufacturing Plants**

* **Population:** 46,300

County Seat: Flemington Boro

(1) Major Municipalities: Readington Township 4,674;
Lambertville City 4,635; Flemington Boro 3,387;
Clinton Township 3,173.

September 1955	Number	% of employed persons	% of county population
**Workers employed in all industries	8,217	100.0	17.7
Workers employed in manufacturing	4,067	49.5	8.9
Workers employed in trade	1,821	22.2	3.9
Mfg. workers per square mile	9.31		

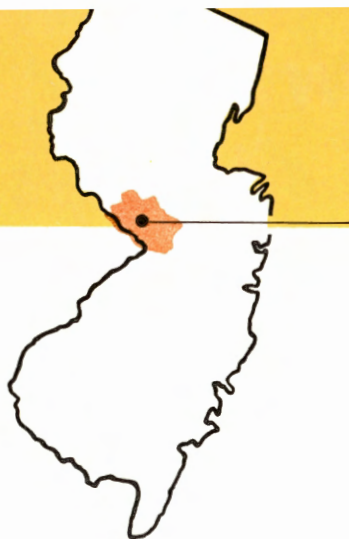
	Number	% of County Total	% of Industry Total in State
Paper	1,341	33.0	5.1
Primary Metal Industry	644	15.8	1.7
Chemicals	434	10.7	0.5
Stone, Clay and Glass	304	7.5	0.9
Apparel	257	6.3	0.3
Rubber	167	4.1	1.0
Fabricated Metal Products	163	4.0	0.3
Leather	117	2.9	1.0
Textile Mills	116	2.9	0.2
Electrical Goods and Machines	102	2.5	0.1
Food	101	2.5	0.2
Machinery (ex. elec.)	100	2.4	0.1
All Other	221	5.4	—
All Manufacturing	4,067	100.0	0.5

Compiled by Research and Statistic Section,
Department of Conservation and Economic Development.

* Population Estimates: July 1, 1955, by Research and Statistic Section, Department of Conservation and Economic Development.

** Covered employment only from data supplied by N. J. Department of Labor and Industry.

(1) Major in the sense of population.



MERCER COUNTY

41,253 Industrial Workers employed in 350 Manufacturing Plants

* Population: 256,900

County Seat: State Capital: Trenton City

(1) Major Municipalities: Trenton City 134,890; Hamilton Township 49,820; Ewing Township 21,644; Princeton Boro 12,967.

September 1955	Number	% of employed persons	% of county population
**Workers employed in all industries	72,479	100.0	28.2
Workers employed in manufacturing	41,253	56.9	16.1
Workers employed in trade	15,073	20.8	5.8
Mfg. workers per square mile	182.54		

	Number	% of County Total	% of Industry Total in State
Fabricated Metal Products	7,932	19.2	15.3
Stone, Clay and Glass	5,395	13.1	15.8
Rubber	4,121	10.0	25.2
Machinery (ex. elec.)	3,949	9.6	5.6
Electrical Goods and Machines	3,857	9.3	3.2
Primary Metal Industries	2,845	6.9	7.6
Textile Mills	2,501	6.1	5.2
Chemicals	1,571	3.8	1.8
Apparel	1,464	3.6	1.8
Printing and Publishing	1,111	2.7	4.2
Food	1,066	2.6	1.9
Paper	759	1.8	2.9
Tobacco	669	1.6	19.8
Leather	667	1.6	5.5
All Other	3,346	8.1	—
All Manufacturing	41,253	100.0	5.0

Compiled by Research and Statistic Section,
Department of Conservation and Economic Development.

* Population Estimates: July 1, 1955, by Research and Statistic Section, Department of Conservation and Economic Development.

** Covered employment only from data supplied by N. J. Department of Labor and Industry.

(1) Major in the sense of population.



MIDDLESEX COUNTY

**67,380 Industrial Workers employed in
532 Manufacturing Plants**

* **Population:** 325,300

County Seat: New Brunswick City

(1) Major Municipalities: Woodbridge Township 50,142;
Perth Amboy City 43,053; New Brunswick City 41,837;
Edison Township 25,001.

September 1955	Number	% of employed persons	% of county population
**Workers employed in all industries	96,071	100.0	29.5
Workers employed in manufacturing	67,380	70.1	20.7
Workers employed in trade	14,143	14.7	4.3
Mfg. workers per square mile	218.20		

	Number	% of County Total	% of Industry Total in State
Chemicals	14,416	21.4	16.4
Electrical Goods and Machines	8,464	12.6	7.1
Primary Metal Industries	7,429	11.0	19.9
Apparel	7,249	10.8	8.8
Instruments and Clocks	5,636	8.4	22.0
Stone, Clay and Glass	3,271	4.9	9.6
Automobile Industry	3,236	4.8	18.2
Machinery (ex. elec.)	2,927	4.3	4.1
Printing and Publishing	2,266	3.4	8.7
Fabricated Metal Products	1,768	2.6	3.4
Paper	1,851	2.7	7.0
Petroleum Refining	1,356	2.0	8.5
Textile Mills	1,245	1.8	2.6
Food	1,146	1.7	2.0
Leather	1,000	1.5	8.3
All Other	4,120	6.1	—
All Manufacturing	67,380	100.0	8.2

Compiled by Research and Statistic Section,
Department of Conservation and Economic Development.

* Population Estimates: July 1, 1955, by Research and Statistic Section, Department of Conservation and Economic Development.

** Covered employment only from data supplied by N. J. Department of Labor and Industry.
(1) Major in the sense of population.



MONMOUTH COUNTY

14,569 Industrial Workers employed in 314 Manufacturing Plants

* **Population:** 257,000

County Seat: Freehold Borough

(1) **Major Municipalities:** Long Branch City 25,564;
Middletown Township 20,659; Asbury Park City 17,975;
Neptune Township 15,448; Red Bank Borough 13,630.

September 1955	Number	% of employed persons	% of county population
**Workers employed in all industries	42,329	100.0	16.5
Workers employed in manufacturing	14,569	34.4	5.7
Workers employed in trade	12,631	29.8	4.9
Workers employed in service industries	5,761	13.6	2.2
Mfg. workers per square mile	30.54		

	Number	% of County Total	% of Industry Total in State
Apparel	4,413	30.3	5.3
Electrical Goods and Machines	3,243	22.3	2.7
Textile Mills	1,416	9.7	2.9
Food	1,035	7.1	1.8
Stone, Clay and Glass	730	5.0	2.1
Machinery (ex. elec.)	658	4.5	0.9
Fabricated Metal Products	653	4.5	1.3
Printing and Publishing	526	3.6	2.0
Chemicals	417	2.9	0.5
Rubber	296	2.0	1.8
Aircraft Industry	167	1.1	0.7
Shipbuilding	139	1.0	1.2
Furniture	139	1.0	1.8
All others	737	5.0	—
All Manufacturing	14,569	100.0	1.8

Compiled by Research and Statistic Section,
Department of Conservation and Economic Development.

* Population Estimates: July 1, 1955, by Research and Statistic Section, Department of Conservation and Economic Development.

** Covered employment only from data supplied by N. J. Department of Labor and Industry.

(1) Major in the sense of population.



MORRIS COUNTY

**18,682 Industrial Workers employed in
268 Manufacturing Plants**

* **Population:** 195,000

County Seat: Morristown Town

(1) Major Municipalities: Morristown Town 18,565;
Parsippany-Troy Hills Township 18,486;
Madison Borough 12,500; Dover Town 12,259.

September 1955	Number	% of employed persons	% of county population
**Workers employed in all industries	38,412	100.0	19.7
Workers employed in manufacturing	18,682	48.6	9.6
Workers employed in trade	7,677	20.0	3.9
Mfg. workers per square mile	39.11		

	Number	% of County Total	% of Industry Total in State
Machinery (ex. elec.)	2,968	15.9	4.2
Chemicals	2,437	13.1	2.8
Electrical Goods and Machines	1,716	9.2	1.4
Apparel	1,446	7.7	1.8
Rubber	1,443	7.7	8.8
Paper	1,208	6.5	4.6
Fabricated Metal Products	1,004	5.4	1.9
Primary Metal Products	998	5.3	2.7
Food	995	5.3	1.8
Stone, Clay and Glass	772	4.1	2.3
Textile Mills	703	3.8	1.5
Leather	562	3.0	4.7
Printing and Publishing	359	1.9	1.4
Furniture	275	1.5	3.5
All Other	1,796	9.6	—
All Manufacturing	18,682	100.0	2.3

Compiled by Research and Statistic Section,
Department of Conservation and Economic Development.

* Population Estimates: July 1, 1955, by Research and Statistic Section, Department of Conservation and Economic Development.

** Covered employment only from data supplied by N. J. Department of Labor and Industry.

(1) Major in the sense of population.



OCEAN COUNTY

1,461 Industrial Workers employed in 65 Manufacturing Plants

* **Population:** 71,000

County Seat: Toms River (Dover Township)

(1) **Major Municipalities:** Lakewood Township 12,627;
Dover Township 11,621; Brick Township 5,745;
Point Pleasant Borough 5,125.

September 1955	Number	% of employed persons	% of county population
**Workers employed in all industries	8,890	100.0	12.5
Workers employed in manufacturing	1,461	16.4	2.1
Workers employed in trade	3,639	40.9	5.1
Workers employed in service industries	1,290	14.5	1.9
Mfg. workers per square mile	2.28		

	Number	% of County Total	% of Industry Total in State
Apparel	496	34.0	0.6
Chemicals	422	28.9	0.5
Shipbuilding	203	13.9	1.7
Printing and Publishing	97	6.6	0.4
Stone, Clay and Glass	65	4.4	0.2
Food	54	3.7	0.1
All Other	124	8.5	—
All Manufacturing	1,461	100.0	0.2

Compiled by Research and Statistic Section,
Department of Conservation and Economic Development.

* Population Estimates: July 1, 1955, by Research and Statistic Section, Department of Conservation and Economic Development.

** Covered employment only from data supplied by N. J. Department of Labor and Industry.

(1) Major in the sense of population.



PASSAIC COUNTY

**79,446 Industrial Workers employed in
1,330 Manufacturing Plants**

* **Population:** 371,500

County Seat: Paterson City

(1) **Major Municipalities:** Paterson City 146,588;
Clifton City 74,073; Passaic City 60,937;
Hawthorne Borough 16,080.

September 1955	Number	% of employed persons	% of county population
**Workers employed in all industries	123,648	100.0	33.3
Workers employed in manufacturing	79,446	64.3	21.4
Workers employed in trade	20,507	16.6	5.5
Mfg. workers per square mile	413.35		

	Number	% of County Total	% of Industry Total in State
Textile	17,384	21.9	36.0
Apparel	11,818	14.9	14.3
Electrical Goods and Machines	11,376	14.3	9.5
Rubber	7,148	9.0	43.6
Chemicals	5,007	6.3	5.7
Fabricated Metal Products	4,730	6.0	9.1
Machinery (ex. elec.)	4,433	5.6	6.2
Food	3,279	4.1	5.8
Instruments and Clocks	2,689	3.4	10.5
Printing and Publishing	2,653	3.3	10.1
Paper	1,957	2.5	7.4
Primary Metal Industry	1,544	1.9	4.1
All Other	5,428	6.8	—
All Manufacturing	79,446	100.0	9.6

Compiled by Research and Statistic Section,
Department of Conservation and Economic Development.

* Population Estimates: July 1, 1955, by Research and Statistic Section, Department of Conservation and Economic Development.

** Covered employment only from data supplied by N. J. Department of Labor and Industry.

(1) Major in the sense of population.

SALEM COUNTY



* Population: 54,000

County Seat: Salem City

(1) Major Municipalities: Salem City 9,604; Lower Penns Neck Township 8,530; Upper Penns Neck Township 7,328; Pennsgrove Borough 7,179.

September 1955	Number	% of employed persons	% of county population
**Workers employed in all industries	15,160	100.0	28.0
Workers employed in manufacturing	12,068	79.6	22.3
Workers employed in trade	1,591	10.5	2.9
Mfg. workers per square mile	35.18		

12,068 Industrial Workers employed in 36 Manufacturing Plants

	Number	% of County Total	% of Industry Total in State
Chemicals	8,596	71.2	9.8
Stone, Clay, Glass	1,808	15.0	5.3
Food	599	5.0	1.1
Apparel	555	4.6	0.7
Textile Mills	367	3.0	0.8
All Other	143	1.2	—
All Manufacturing	12,068	100.0	1.4

Compiled by Research and Statistic Section,
Department of Conservation and Economic Development.

* Population Estimates: July 1, 1955, by Research and Statistic Section, Department of Conservation and Economic Development.

** Covered employment only from data supplied by N. J. Department of Labor and Industry.

(1) Major in the sense of population.



SOMERSET COUNTY

16,212 Industrial Workers employed in 127 Manufacturing Plants

* Population: 115,000

County Seat: Somerville Borough

(1) Major Municipalities: North Plainfield Borough 14,630;
Somerville Borough 12,604; Franklin Township 11,774.

September 1955	Number	% of employed persons	% of county population
**Workers employed in all industries	25,145	100.0	21.9
Workers employed in manufacturing	16,212	64.5	14.1
Workers employed in trade	4,123	16.4	3.6
Mfg. workers per square mile	53.14		

	Number	% of County Total	% of Industry Total in State
Stone, Clay and Glass	4,850	29.9	14.2
Chemicals	4,188	25.8	4.8
Electrical Goods and Machines	3,824	23.6	3.2
Apparel	850	5.3	1.0
Petroleum	509	3.1	3.2
Machinery (ex. elec.)	506	3.1	0.7
Textile Mills	398	2.5	0.8
Fabricated Metal Products	211	1.3	0.4
Food	154	0.9	0.3
All Other	722	4.5	—
All Manufacturing	16,212	100.0	2.0

Compiled by Research and Statistic Section,
Department of Conservation and Economic Development.

* Population Estimates: July 1, 1955, by Research and Statistic Section, Department of Conservation and Economic Development.

** Covered employment only from data supplied by N. J. Department of Labor and Industry.

(1) Major in the sense of population.



SUSSEX COUNTY

2,262 Industrial Workers employed in 57 Manufacturing Plants

	Number	% of County Total	% of Industry Total in State
Apparel	686	30.3	0.8
Textile Mills	341	15.1	0.7
Electrical Goods and Machines	269	11.9	0.2
Instruments and Clocks	234	10.3	0.9
Rubber	170	7.5	1.0
Stone, Clay and Glass	128	5.7	0.4
Food	84	3.7	0.1
Printing and Publishing	65	2.9	0.2
Fabricated Metal Products	61	2.7	0.1
Basic Lumber	54	2.4	1.1
Furniture	43	1.9	0.6
Chemicals	38	1.7	0.04
All Other	89	3.9	—
All Manufacturing	2,262	100.0	0.3

Compiled by Research and Statistic Section,
Department of Conservation and Economic Development.

* Population Estimates: July 1, 1955, by Research and Statistic Section, Department of Conservation and Economic Development.

** Covered employment only from data supplied by N. J. Department of Labor and Industry.

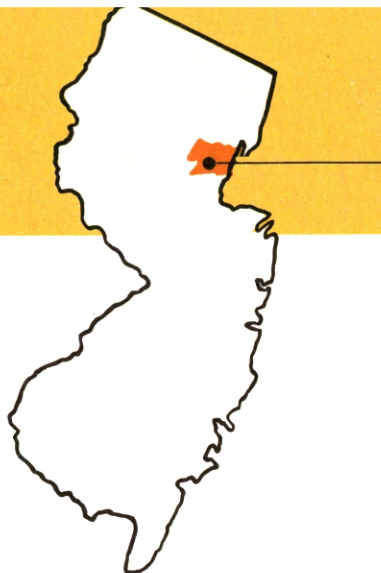
(1) Major in the sense of population.

* Population: 38,000

County Seat: Newton Town

(1) Major Municipalities: Newton Town 5,781;
Franklin Borough 3,864; Sparta Township 3,021.

September 1955	Number	% of employed persons	% of county population
**Workers employed in all industries	5,672	100.0	14.9
Workers employed in manufacturing	2,262	39.9	6.0
Workers employed in trade	1,381	24.3	3.6
Mfg. workers per square mile	4.30		



UNION COUNTY

86,149 Industrial Workers employed in 930 Manufacturing Plants

* Population: 455,000

County Seat: Elizabeth City

(1) Major Municipalities: Elizabeth City 119,772; Plainfield City 45,872; Union Township 44,615; Linden City 35,579.

September 1955	Number	% of employed persons	% of county population
**Workers employed in all industries	144,852	100.0	31.8
Workers employed in manufacturing	86,149	59.5	18.9
Workers employed in trade	25,844	17.8	5.7
Workers employed in services	12,250	8.5	2.7
Mfg. workers per square mile	833.16		

	Number	% of County Total	% of Industry Total in State
Machinery (ex. elec.)	17,251	20.0	24.3
Chemicals	13,464	15.6	15.4
Automobile Industry	9,473	11.0	53.2
Fabricated Metal Products	6,919	8.0	13.4
Apparel	5,167	6.0	6.3
Primary Metal Products	5,074	5.9	13.6
Petroleum	4,879	5.7	30.7
Electrical Goods and Machines	4,556	5.3	3.8
Food	3,424	4.0	6.0
Printing and Publishing	2,691	3.1	10.3
Aircraft Industry	1,816	2.1	7.1
Paper	1,709	2.0	6.5
Textile Mills	1,416	1.7	2.9
Instruments and Clocks	1,055	1.2	4.1
All Other	7,255	8.4	—
All Manufacturing	86,149	100.0	10.5

Compiled by Research and Statistic Section,
Department of Conservation and Economic Development.

* Population Estimates: July 1, 1955, by Research and Statistic Section, Department of Conservation and Economic Development.

* * Covered employment only from data supplied by N. J. Department of Labor and Industry.

(1) Major in the sense of population.



WARREN COUNTY

10,859 Industrial Workers employed in 93 Manufacturing Plants

	Number	% of County Total	% of Industry Total in State
Machinery (ex. elec.)	4,040	37.2	5.7
Textile Mills	1,262	11.6	2.6
Electrical Goods and Machines	1,173	10.8	1.0
Chemicals	998	9.2	1.1
Fabricated Metal Products	979	9.0	1.9
Paper	822	7.6	3.1
Primary Metal Products	445	4.1	1.2
Apparel	346	3.2	0.4
Leather	228	2.1	1.9
Stone, Clay and Glass	205	1.9	0.6
Printing and Publishing	154	1.4	0.6
Food	104	1.0	0.2
All Other	103	0.9	—
All Manufacturing	10,859	100.0	1.3

Compiled by Research and Statistic Section,
Department of Conservation and Economic Development.

* Population Estimates: July 1, 1955, by Research and Statistic Section, Department of Conservation and Economic Development.

** Covered employment only from data supplied by N. J. Department of Labor and Industry.

(1) Major in the sense of population.

* Population: 59,000

County Seat: Belvidere Town (2,560)

(1) Major Municipalities: Phillipsburg Town 20,623;
Washington Borough 5,065; Hackettstown Town 4,285.

September 1955	Number	% of employed persons	% of county population
**Workers employed in all industries	14,550	100.0	24.7
Workers employed in manufacturing	10,859	74.6	18.4
Workers employed in trade	2,024	13.9	3.4
Mfg. workers per square mile	30.00		

For Additional Information write to

COMMISSIONER JOSEPH E. McLEAN

Department of Conservation and Economic Development

State House Annex

Trenton 25, New Jersey



