

9-E

HISTORICAL POPULATION ESTIMATES

BY MUNICIPALITY

FOR

NEW JERSEY

1971-1974

GOVERNMENT DOCUMENTS

DEC 18 1978

DREW UNIVERSITY LIBRARY
MADISON, NEW JERSEY

STATE OF NEW JERSEY

BRENDAN T. BYRNE, GOVERNOR

Department of Labor and Industry

John J. Horn, Commissioner

Office of Demographic and Economic Analysis

Division of Planning and Research

P.O. Box 845

Trenton, New Jersey 08625

September, 1978

NJ
90
P825
1978d

NOTES ON DATA AND METHODS

HISTORIC POPULATION ESTIMATES BY MUNICIPALITY

1971-1974

This report contains revised historic estimates of total resident population for the State of New Jersey, its 21 counties, and 567 municipalities for the period July 1, 1971 to July 1, 1974. Corrected April 1, 1970 population counts from the 1970 Census of Population are also presented. These revised estimates from 1971 to 1974 supersede all other estimates for these years, which have been issued previously by the Department of Labor and Industry. The figures contained in this report are based on input data and techniques similar to those used to generate the July 1, 1975 and July 1, 1976 population estimates published earlier this year by this Department.¹

With the exception of the April 1, 1970 Census figures, the population numbers in this report are estimates. As estimates, they do not represent actual headcounts but are based on changes in data series, which are closely related to changes in population. Therefore, small changes in population estimates from year-to-year may not be indicative of "true" population change but of the less than perfect relationship between "true" population change and the data series used to estimate that change.

To determine the July 1, 1973 estimates, the same methods and input data were utilized as for the recently published 1975 and 1976 estimates. Except at the State level, where the same procedures were followed throughout the period, techniques had to be modified somewhat for years other than 1973 due to the lack of comparable historic input data.

Municipality Estimates

To estimate population by minor civil division for 1973, two independent techniques were used - Administrative Records and the Housing Unit Method. The resulting estimates were averaged. This was the identical procedure used to generate the 1975 and 1976 municipality estimates, published in March 1978. Because data necessary to determine the migration component for the Administrative Records Method were not available for 1971, 1972 and 1974, modifications in the 1973 procedure were required. Observed growth between the 1970 Census counts and the 1973 and 1975 population estimates by municipality was allocated to the intervening years based on annual shares of growth as determined by the Housing Unit Method. Both the Administrative Records Method and the Housing Unit Method are explained in the following sections.

¹ Population Estimates for New Jersey, July 1, 1976, Office of Demographic and Economic Analysis, Division of Planning and Research, Department of Labor and Industry, March, 1978.

Administrative Records Method is a component procedure developed by the U.S. Census Bureau in which post-1970 births, deaths, net migration, and special populations are estimated separately.² Reported births and deaths by residence are used to estimate natural increment. Migration rates are determined through Federal income tax 1040 returns. Individual returns are matched for successive time periods to arrive at in-migrants, out-migrants and nonmigrants by area. A net migration rate, which is developed from the difference between the in- and out-migration of taxpayers and their dependents, is then applied to the base year population to yield an estimate of net migration for all persons in the area. Adjustments for special populations, whose changes cannot be adequately reflected by the above components, are then made. Such special populations include immigrants from abroad, members of the Armed Forces living in barracks, residents of institutions, and college students.

Revised Housing Unit Method. This method begins with the permanent year-round housing inventory from the 1970 Census as a base and estimates post-1970 changes in year-round units through the use of reported building permits (adjusted for units authorized but never constructed) and demolition data; surveys of mobile-home parks; and adjustments for segments of public housing, and conversions such as seasonal to permanent units, which are not covered by building permits. Occupancy rates and population per household from the decennial census are modified in accordance with observed changes in the Northeastern United States, as reported in U.S. Census Bureau Surveys. These rates are then applied to the estimated current year-round housing inventory to arrive at household population. Once again, adjustments are made for special populations, i.e., those living in group quarters.

In addition, all corrections to the 1970 Census and to the 1976 estimates which have been made prior to August 1, 1978, 1974-1975 annual housing survey data for the City of Newark, and special censuses certified after April 1, 1970 and prior to August 1, 1978 by the U.S. Bureau of the Census were taken into consideration in the development of the historic estimates.³ It should be noted that State and Federal corrections to the 1976 estimates for the cities of Passaic and Paterson resulted in upward adjustments in the historic estimates for Passaic County and the State.

² The Administrative Records estimates for 1973 and 1975 were published in Current Population Reports, Population Estimates and Projections, P-25, No. 678, May 1977, U.S. Department of Commerce, Bureau of the Census.

³ As a pilot project only, the Department of Labor and Industry cooperated with the Borough of Chesilhurst, Camden County, in a special census and with the Borough of Fort Lee, Bergen County, in a sample survey. The results of this census and sample survey were used to determine Chesilhurst's and Fort Lee's population. Also, results from a sample survey conducted by the City of Paterson were considered in their estimates. It should be noted that 1971 to 1974 estimates for a small number of geographical areas may not be completely comparable to the 1975 and 1976 estimates published in March, 1978 by this Department due to subsequent corrections in the 1976 estimates, which will be reflected in a future publication.

County Estimates

For 1973 and 1974, municipality estimates in each county were adjusted to independent county estimates of total population, which were an average of the results of three methods - Administrative Records, Ratio-Correlation, and Component II. These figures represent revisions to originally published data which were developed jointly by this Office and the U.S. Census Bureau, as part of the Federal-State Cooperative Program for Local Area Population Estimates. The 1973 and 1974 procedures were similar to those used to generate the 1975 county estimates published earlier this year by this Department. For 1971 and 1972, because of the unavailability of comparable input data, the sum of the municipality estimates for each county were used, controlled to total growth as determined by the 1970 Census counts and 1973 estimates at a county level.⁴ All county estimates were adjusted to independently derived State estimates. Administrative Records, Component Method II, and Ratio Correlation are explained below:

Administrative Records Method for counties is much the same as for municipalities. In the Administrative Records procedure for counties, however, the population 65 years of age and over is estimated separately, using post-1970 Census Medicare enrollment data.

Component Method II utilizes reported births and deaths to measure natural increment and elementary school enrollment to determine net migration of the under 65 year old household population. Special populations and those 65 years of age and over are estimated in a similar manner to the Administrative Records Method.

Ratio Correlation employs a multiple correlation equation to relate changes in four data series to changes in the population distribution of the State's 21 counties. The series used in New Jersey for 1973 and 1974 match those used in 1975. They are passenger car registrations (X₁), a two-year average of resident births (X₂), employment covered by unemployment insurance (X₃) and housing units (X₄). The equation for 1973 and 1974 is:

$$\hat{y} = - 0.22 + 0.57X_1 + 0.23X_2 + 0.17X_3 + 0.24X_4$$

State Estimates

The county estimates of total population are adjusted to State estimates developed by the U.S. Census Bureau with the assistance of this Department. The State estimates for all years are an average of the Administrative Records, Ratio-Correlation, and Component Method II techniques. The Ratio-Correlation Method for the under 65 year old population has as its independent variables: elementary school enrollment (X₁), Federal income tax returns (X₂), passenger car registrations (X₃) and labor force (X₄). The equation is:

$$\hat{y} = + 0.14 + 0.26X_1 + 0.25X_2 + 0.04X_3 + 0.31X_4$$

⁴The county estimates in this report do not necessarily agree with those estimates originally prepared as part of the Federal-State Cooperative Program for Local Area Population Estimates primarily because of the significant change in input data and procedures in the Cooperative Program during the early seventies. It is felt that the historical county estimates in this report are more directly comparable to the results from current cooperative techniques and data than those previously published under the Cooperative Program.

REVISED
RESIDENT POPULATION

COUNTY	CENSUS	ESTIMATES			
	April 1, 1970	July 1, 1971	July 1, 1972	July 1, 1973	July 1, 1974
Atlantic	175,043	180,400	184,200	186,200	187,900
Bergen	897,148	899,800	895,400	885,000	880,700
Burlington	323,132	334,800	339,600	344,200	341,300
Camden	456,291	466,100	469,500	472,400	473,700
Cape May	59,554	62,000	63,700	67,000	70,400
Cumberland	121,374	126,100	128,700	129,500	131,500
Essex	932,526	933,700	926,000	909,300	896,200
Gloucester	172,681	177,000	181,500	183,900	187,700
Hudson	607,839	608,700	602,700	592,500	585,100
Hunterdon	69,718	72,500	74,400	75,900	76,700
Mercer	304,116	310,500	315,600	317,300	320,000
Middlesex	583,813	592,000	595,400	595,900	596,200
Monmouth	461,849	475,000	480,800	483,500	487,900
Morris	383,454	393,700	396,600	395,900	393,400
Ocean	208,470	230,200	249,800	267,700	280,900
Passaic	460,782	466,800	469,700	470,800	470,900
Salem	60,346	61,100	61,600	61,800	61,400
Somerset	198,372	201,100	201,200	200,600	201,300
Sussex	77,528	82,600	87,100	91,600	95,000
Union	543,116	543,800	539,300	532,700	524,500
Warren	73,960	74,700	75,100	77,500	79,200
TOTAL	7,171,112	7,293,000	7,338,000	7,341,000	7,342,000

NOTE: Totals may not equal sum of counties due to rounding.

REVISED
RESIDENT POPULATION

	CENSUS	ESTIMATES			
	April 1, 1970	July 1, 1971	July 1, 1972	July 1, 1973	July 1, 1974
<u>ATLANTIC COUNTY</u>					
Absecon City	6,094	6,244	6,340	6,632	6,773
Atlantic City	47,859	47,850	47,129	46,617	46,154
Brigantine City	6,741	7,064	7,351	7,761	7,901
Buena Boro	3,283	3,292	3,301	3,288	3,249
Buena Vista Boro	4,239	4,442	4,733	4,804	4,922
Corbin City	258	263	264	263	268
Egg Harbor Twp.	9,882	11,113	12,400	12,968	13,693
Egg Harbor City	4,304	4,602	4,624	4,623	4,587
Estell Manor City	539	550	564	591	615
Folsom Boro	1,767	1,794	1,875	1,944	1,993
Galloway Twp.	8,276	8,494	8,566	9,101	9,615
Hamilton Twp.	6,445	6,816	7,114	7,429	8,482
Hammonton Town	11,464	11,868	11,910	11,881	11,853
Linwood City	6,159	6,323	6,668	6,695	6,673
Longport Boro	1,225	1,263	1,296	1,340	1,358
Margate City	10,576	10,685	10,725	10,801	10,737
Mullica Twp.	3,391	3,482	3,507	3,550	3,542
Northfield City	8,646	8,653	8,619	8,508	8,288
Pleasantville City	14,007	14,323	14,420	14,402	14,309
Port Republic City	586	608	649	668	676
Somers Point City	7,919	8,521	9,831	10,000	9,944
Ventnor City	10,385	11,088	11,216	11,258	11,199
Weymouth City	998	1,045	1,058	1,075	1,069
Total	175,043	180,383	184,160	186,199	187,900
<u>BERGEN COUNTY</u>					
Allendale Boro	6,240	6,346	6,266	6,688	6,492
Alpine Boro	1,344	1,381	1,387	1,412	1,433
Bergenfield Boro	29,000	28,955	28,542	27,840	27,585
Bogota Boro	8,960	8,944	8,802	8,582	8,510
Carlstadt Boro	6,724	6,718	6,650	6,506	6,450
Cliffside Park Boro	18,891	18,962	19,252	19,722	22,080
Closter Boro	8,604	8,613	8,589	8,477	8,414
Cresskill Boro	8,298	8,300	8,242	8,114	8,019
Demarest Boro	5,133	5,144	5,152	5,122	5,083
Dumont Boro	20,155	20,129	19,867	19,410	19,223
East Rutherford Boro	8,536	8,522	8,379	8,183	8,104
Edgewater Boro	4,987	4,985	4,936	4,843	4,933
* Elmwood Park Boro	20,511	20,501	20,352	19,916	19,542
Emerson Boro	8,428	8,436	8,402	8,302	8,208
Englewood City	24,985	24,954	24,731	24,074	23,833
Englewood Cliffs Boro	5,938	5,975	5,986	5,963	6,078
Fair Lawn Boro	37,975	37,955	37,583	36,854	36,355
Fairview Boro	10,698	10,703	10,675	10,486	10,387
Fort Lee Boro	30,631	31,314	31,862	32,409	32,956

* East Paterson Boro name changed to Elmwood Park Boro, January 1, 1973.

REVISED
RESIDENT POPULATION

BERGEN COUNTY (Cont.)	CENSUS	ESTIMATES			
	April 1, 1970	July 1, 1971	July 1, 1972	July 1, 1973	July 1, 1974
Franklin Lakes Boro	7,550	7,607	7,646	7,635	7,777
Garfield City	30,797	30,741	30,248	29,490	29,204
Glen Rock Boro	13,011	12,991	12,811	12,493	12,385
Hackensack City	36,008	36,080	36,107	35,774	35,782
Harrington Park Boro	4,841	4,897	4,909	4,889	4,829
Hasbrouck Heights Boro	13,651	13,639	13,484	13,193	13,033
Haworth Boro	3,760	3,763	3,737	3,697	3,657
Hillsdale Boro	11,768	11,788	11,797	11,684	11,562
Hohokus Boro	4,348	4,347	4,302	4,240	4,208
Leonia Boro	8,847	8,832	8,700	8,485	8,405
Little Ferry Boro	9,064	9,123	9,384	9,586	9,505
Lodi Boro	25,163	25,222	25,260	25,120	24,894
Lyndhurst Twp.	22,729	22,682	22,312	21,703	21,503
Mahwah Twp.	10,800	11,533	11,618	12,475	12,423
Maywood Boro	11,087	11,067	10,884	10,614	10,515
Midland Park Boro	8,159	8,161	8,142	8,042	7,970
Montvale Boro	7,327	7,344	7,352	7,320	7,283
Moonachie Boro	2,951	2,969	2,975	2,962	2,921
New Milford Boro	19,149	19,115	18,832	18,340	18,174
North Arlington Boro	18,096	18,083	17,878	17,519	17,327
Northvale Boro	5,177	5,195	5,205	5,184	5,144
Norwood Boro	4,398	4,404	4,399	4,342	4,413
Oakland Boro	14,420	14,438	14,369	14,243	14,130
Old Tappan Boro	3,917	4,072	4,127	4,161	4,135
Oradell Boro	8,903	8,926	8,940	8,902	8,785
Palisades Park Boro	13,351	13,362	13,333	13,136	13,030
Paramus Boro	28,381	28,568	28,625	28,506	28,073
Park Ridge Boro	8,709	8,789	8,967	8,988	9,048
Ramsey Boro	12,571	12,318	12,320	12,256	12,159
Ridgefield Boro	11,308	11,301	11,193	10,971	10,856
Ridgefield Park Twp.	13,990	13,965	13,748	13,400	13,288
Ridgewood Twp.	27,547	27,526	27,237	26,667	26,430
River Edge Boro	12,850	12,824	12,623	12,278	12,169
River Vale Twp.	8,883	8,915	8,930	8,893	8,865
Rochelle Park Twp.	6,380	6,363	6,246	6,057	6,001
Rockleigh Boro	308	306	282	281	278
Rutherford Boro	20,802	20,795	20,620	20,223	20,045
Saddle Brook Twp.	15,975	15,973	15,850	15,571	15,415
Saddle River Boro	2,437	2,466	2,493	2,485	2,539
South Hackensack Twp.	2,412	2,406	2,397	2,297	2,281
Teaneck Twp.	42,355	42,377	42,117	41,542	40,899
Tenafly Boro	14,827	14,825	14,672	14,443	14,288
Teterboro Boro	19	19	19	17	17
Upper Saddle River Boro	7,949	8,118	8,150	8,144	8,134
Waldwick Boro	12,313	12,293	12,076	11,809	11,683
Wallington Boro	10,284	10,632	10,666	10,640	10,539
Washington Twp.	10,577	10,577	10,466	10,326	10,279
Westwood Boro	11,105	11,122	11,112	10,999	10,854
Woodcliff Lake Boro	5,506	5,551	5,566	5,562	5,571
Wood-Ridge Boro	8,311	8,461	8,488	8,453	8,374
Wyckoff Twp.	16,039	16,100	16,126	16,060	15,936
Total	897,148	899,808	895,395	885,000	880,700

REVISED
RESIDENT POPULATION

	CENSUS		ESTIMATES		
	April 1, 1970	July 1, 1971	July 1, 1972	July 1, 1973	July 1, 1974
<u>BURLINGTON COUNTY</u>					
Bass River Twp.	815	866	1,001	1,001	1,007
Beverly City	3,105	3,171	3,180	3,183	3,118
Bordentown City	4,490	4,717	4,836	4,875	4,655
Bordentown Twp.	7,303	7,615	7,653	7,694	7,442
Burlington City	12,010	12,036	12,047	12,035	11,540
Burlington Twp.	10,621	11,623	11,650	11,756	11,455
Chesterfield Twp.	3,190	3,437	3,471	3,485	3,359
Cinnaminson Twp.	16,962	17,878	17,993	18,109	17,389
Delanco Twp.	4,157	4,158	4,131	4,080	3,913
Delran Twp.	10,065	10,126	11,340	12,879	12,690
Eastampton Twp.	2,284	2,491	2,581	3,157	3,116
Edgewater Park Twp.	7,412	8,892	9,534	9,771	9,518
Evesham Twp.	13,477	14,394	15,128	15,862	16,596
Fieldsboro Boro	615	627	629	629	586
Florence Twp.	8,560	8,710	8,830	8,861	8,597
Hainesport Twp.	2,990	2,993	2,979	2,964	2,671
Lumberton Twp.	3,945	4,008	4,710	4,720	4,830
Mansfield Twp.	2,597	2,640	2,656	2,662	2,637
Maple Shade Twp.	16,464	17,118	18,770	20,932	22,117
Medford Twp.	8,292	8,896	9,910	10,770	11,421
Medford Lakes Boro	4,792	5,521	5,688	5,782	6,103
Moorestown Twp.	15,577	15,893	16,016	16,067	15,622
Mount Holly Twp.	12,713	12,738	12,664	12,560	12,374
Mount Laurel Twp.	11,221	11,891	12,427	12,963	13,499
New Hanover Twp.	27,410	27,476	22,428	17,347	15,029
North Hanover Twp.	9,858	9,835	9,839	9,796	9,548
Palmyra Boro	6,969	6,996	7,044	7,370	7,190
Pemberton Boro	1,344	1,432	1,435	1,445	1,411
Pemberton Twp.	19,754	21,006	22,011	23,014	24,016
Riverside Twp.	8,591	8,560	8,414	8,108	7,887
Riverton Boro	3,412	3,399	3,319	3,221	3,131
Shamong Twp.	1,318	1,428	1,566	1,736	1,856
Southampton Twp.	4,982	5,427	6,303	7,288	7,886
Springfield Twp.	2,244	2,294	2,320	2,352	2,296
Tabernacle Twp.	2,103	2,262	2,446	2,582	2,962
Washington Twp.	673	690	699	702	685
Westampton Twp.	2,680	2,699	2,719	2,858	2,813
Willingboro Twp.	43,386	43,898	44,311	44,607	43,598
Woodland Twp.	2,032	2,104	2,115	2,120	2,081
Wrightstown Boro	2,719	2,837	2,845	2,855	2,656
Total	323,132	334,782	339,638	344,198	341,300
<u>CAMDEN COUNTY</u>					
Audubon Boro	10,802	10,795	10,675	10,482	10,285
Audubon Park Boro	1,492	1,496	1,497	1,491	1,423
Barrington Boro	8,409	8,416	8,367	8,291	8,257
Bellmawr Boro	15,618	15,643	15,617	15,502	15,168

REVISED
RESIDENT POPULATION

CAMDEN COUNTY (Cont.)	CENSUS		ESTIMATES		
	April 1, 1970	July 1, 1971	July 1, 1972	July 1, 1973	July 1, 1974
Berlin Boro	4,997	5,250	5,447	5,478	5,449
Berlin Twp.	5,692	5,808	5,822	5,812	5,957
Brooklawn Boro	2,870	2,869	2,840	2,795	2,749
Camden City	102,551	100,180	98,278	96,380	94,638
Cherry Hill Twp.	64,395	67,859	68,335	68,063	67,776
Chesilhurst Boro	801	921	1,017	1,113	1,201
Clementon Boro	4,492	4,542	5,288	5,359	6,042
Collingswood Boro	17,422	17,410	17,215	16,903	16,693
Gibbsboro Boro	2,634	2,636	2,627	2,601	2,552
Gloucester City	14,707	14,712	14,562	14,418	14,166
Gloucester Twp.	26,511	28,863	30,751	32,634	34,362
Haddon Twp.	18,192	18,204	18,099	17,891	17,521
Haddonfield Boro	13,118	13,096	12,913	12,596	12,507
Haddon Heights Boro	9,365	9,377	9,359	9,268	9,019
Hi-Nella Boro	1,195	1,205	1,208	1,204	1,172
Laurel Springs Boro	2,566	2,988	3,011	3,030	3,117
Lawnside Boro	2,757	2,988	3,038	3,213	3,194
Lindenwold Boro	12,199	13,694	14,894	16,091	17,288
Magnolia Boro	5,893	5,905	5,878	5,860	5,826
Merchantville Boro	4,425	4,430	4,434	4,343	4,311
Mount Ephraim Boro	5,625	5,622	5,563	5,465	5,309
Oaklyn Boro	4,626	4,620	4,553	4,457	4,394
Pennsauken Twp.	36,394	36,461	36,451	36,225	35,341
Pine Hill Boro	5,132	5,611	5,994	6,377	6,760
Pine Valley Boro	23	23	23	22	22
Runnemede Boro	10,475	10,472	10,380	10,207	9,998
Somerdale Boro	6,510	6,735	6,766	6,750	6,711
Stratford Boro	9,801	9,797	9,729	9,534	9,324
Tavistock Boro	12	12	12	12	11
Voorhees Twp.	6,214	8,235	8,677	10,500	11,556
Waterford Twp.	4,073	4,260	4,309	4,494	4,523
Winslow Twp.	11,202	11,829	12,817	14,546	16,129
Wood-Lynne Boro	3,101	3,097	3,056	2,994	2,951
Total	456,291	466,061	469,502	472,401	473,702

CAPE MAY COUNTY

Avalon Boro	1,283	1,263	1,237	1,188	1,883
Cape May City	4,392	4,126	4,100	4,072	4,592
Cape May Point Boro	204	225	245	272	282
Dennis Twp.	2,635	2,718	2,732	2,840	2,887
Lower Twp.	10,154	10,703	11,153	12,428	13,690
Middle Twp.	8,725	9,276	9,484	9,637	9,752
North Wildwood City	3,914	4,073	4,367	4,487	4,564
Ocean City	10,575	11,283	11,587	12,158	12,287
Sea Isle City	1,712	1,808	1,882	2,422	2,591
Stone Harbor City	1,089	1,163	1,227	1,255	1,282
Upper Twp.	3,413	3,595	3,803	4,135	4,368

REVISED
RESIDENT POPULATION

	CENSUS	ESTIMATES			
	April 1, 1970	July 1, 1971	July 1, 1972	July 1, 1973	July 1, 1974
<u>CAPE MAY COUNTY (Cont.)</u>					
West Cape May Boro	1,005	1,097	1,115	1,113	1,067
West Wildwood Boro	235	247	259	267	284
Wildwood City	4,110	4,125	4,132	4,116	4,148
Wildwood Crest Boro	3,483	3,685	3,722	3,721	3,804
Woodbine Boro	2,625	2,657	2,667	2,887	2,919
Total	59,554	62,044	63,712	66,998	70,400
<u>CUMBERLAND COUNTY</u>					
Bridgeton City	20,435	20,455	20,380	20,145	20,515
Commercial Twp.	3,667	3,794	3,812	3,811	3,846
Deerfield Twp.	2,464	2,511	2,518	2,522	2,545
Downe Twp.	1,777	1,800	1,804	1,798	1,821
Fairfield Twp.	4,990	5,216	5,272	5,274	5,356
Greenwich Twp.	963	998	1,003	1,000	998
Hopewell Twp.	3,970	4,014	4,054	4,046	4,063
Lawrence Twp.	2,329	2,327	2,303	2,254	2,299
Maurice River Twp.	3,743	4,115	4,341	4,368	4,405
Millville City	21,366	22,651	23,236	24,100	24,577
Shiloh Boro	573	582	583	582	595
Stow Creek Twp.	1,050	1,067	1,072	1,092	1,108
Upper Deerfield Twp.	6,648	6,634	6,639	6,609	6,636
Vineland City	47,399	49,950	51,657	51,901	52,735
Total	121,374	126,114	128,674	129,502	131,499
<u>ESSEX COUNTY</u>					
Belleville Town	37,629	37,960	38,062	38,034	38,118
Bloomfield Town	52,029	52,386	52,480	52,286	52,037
Caldwell Boro	8,677	8,687	8,672	8,567	8,495
Cedar Grove Twp.	15,582	15,527	15,073	14,667	14,256
East Orange City	75,471	75,630	75,708	74,822	73,995
Essex Fells Boro	2,541	2,546	2,545	2,527	2,528
Fairfield Boro	6,884	7,281	7,294	7,305	7,353
Glen Ridge Boro	8,518	8,535	8,531	8,476	8,507
Irvington Town	59,743	59,802	59,399	58,895	58,404
Livingston Twp.	30,127	30,613	30,692	30,585	30,513
Maplewood Twp.	24,932	24,957	24,857	24,580	24,339
Millburn Twp.	21,089	21,131	21,131	20,999	20,849
Montclair Town	44,043	44,062	43,748	43,177	42,665
Newark City	381,930	380,261	373,293	360,390	350,943
North Caldwell Boro	6,733	6,964	6,992	6,971	6,999
Nutley Town	31,913	32,002	32,060	31,934	31,760
Orange City	32,566	32,641	32,685	32,451	32,450
Roseland Boro	4,453	4,632	4,650	4,640	4,583
South Orange Village Twp.	16,971	17,059	17,116	17,275	17,062
Verona Boro	15,067	15,116	15,141	15,081	15,186

REVISED
RESIDENT POPULATION

	CENSUS		ESTIMATES		
	April 1, 1970	July 1, 1971	July 1, 1972	July 1, 1973	July 1, 1974
<u>ESSEX COUNTY (Cont.)</u>					
West Caldwell Boro	11,913	12,081	12,141	12,113	11,971
West Orange Town	43,715	43,802	43,735	43,525	43,188
Total	932,526	933,675	926,005	909,300	896,201
<u>GLOUCESTER COUNTY</u>					
Clayton Boro	5,193	5,249	5,295	5,287	5,629
Deptford Twp.	24,232	24,312	24,396	24,709	24,925
East Greenwich Twp.	3,280	3,302	3,309	3,303	3,430
Elk Twp.	2,707	2,826	2,913	2,908	2,919
Franklin Twp.	8,990	9,167	9,227	9,340	9,662
Glassboro Boro	12,938	13,814	14,742	14,909	15,259
Greenwich Twp.	5,676	5,685	5,676	5,631	5,750
Harrison Twp.	2,661	2,713	2,722	2,713	2,726
Logan Twp.	1,840	1,829	1,773	1,694	1,683
Mantua Twp.	9,643	9,738	9,760	9,730	10,054
Monroe Twp.	14,071	15,266	16,902	17,819	17,914
National Park Boro	3,730	3,730	3,692	3,647	3,632
Newfield Boro	1,487	1,507	1,540	1,570	1,600
Paulsboro Boro	8,084	8,081	7,990	7,872	7,774
Pitman Boro	10,257	10,244	10,115	9,882	9,872
South Harrison Twp.	1,226	1,258	1,295	1,296	1,302
Swedesboro Boro	2,287	2,291	2,288	2,273	2,252
Washington Twp.	15,741	17,074	18,326	19,355	20,232
Wenonah Boro	2,364	2,402	2,412	2,431	2,417
West Deptford Twp.	13,928	14,142	15,050	15,914	17,018
Westville Boro	5,170	5,162	5,081	4,971	5,105
Woodbury City	12,408	12,437	12,174	11,855	11,826
Woodbury Heights Boro	3,621	3,630	3,632	3,620	3,577
Woolwich Twp.	1,147	1,149	1,149	1,171	1,141
Total	172,681	177,008	181,459	183,900	187,699
<u>HUDSON COUNTY</u>					
Bayonne City	72,743	72,887	72,880	72,327	71,752
East Newark Boro	1,922	1,936	1,953	1,945	1,945
Guttenberg Town	5,754	5,788	5,856	5,837	5,890
Harrison Town	11,811	11,927	11,954	11,901	11,870
Hoboken City	45,380	45,229	44,359	42,718	41,908
Jersey City	260,350	260,257	256,333	251,019	245,931
Kearny Town	37,585	37,969	38,050	37,860	37,698
North Bergen Twp.	47,751	48,210	48,355	48,366	48,276
Secaucus Town	13,228	13,215	12,991	12,759	12,429
Union City	57,305	57,267	56,657	55,468	55,244
Weehawken Twp.	13,383	13,350	13,109	12,721	12,679
West New York Town	40,627	40,620	40,237	39,579	39,477
Total	607,839	608,655	602,734	592,500	585,099

REVISED
RESIDENT POPULATION

	CENSUS	ESTIMATES			
	April 1, 1970	July 1, 1971	July 1, 1972	July 1, 1973	July 1, 1974
<u>HUNTERDON COUNTY</u>					
Alexandria Twp.	2,127	2,227	2,314	2,364	2,356
Bethlehem Twp.	1,385	1,402	1,499	1,619	1,747
Bloomsbury Boro	879	879	873	859	857
Califon Boro	970	1,078	1,097	1,112	1,132
Clinton Town	1,742	1,799	1,813	2,020	2,026
Clinton Twp.	5,119	5,468	5,734	5,919	6,099
Delaware Twp.	3,249	3,392	3,410	3,412	3,396
East Amwell Twp.	2,568	2,650	2,707	2,805	2,796
Flemington Boro	3,917	4,051	4,182	4,375	4,328
Franklin Twp.	2,154	2,195	2,235	2,251	2,243
Frenchtown Boro	1,459	1,464	1,476	1,495	1,549
Glen Gardner Boro	874	909	914	911	872
Hampton Boro	1,386	1,417	1,422	1,417	1,452
High Bridge Boro	2,606	2,644	2,867	3,060	3,060
Holland Twp.	3,587	3,743	3,852	3,899	3,986
Kingwood Twp.	2,294	2,335	2,345	2,387	2,430
Lambertville City	4,359	4,360	4,334	4,264	4,205
Lebanon Boro	885	915	919	916	925
Lebanon Twp.	4,235	4,357	4,490	4,667	4,695
Milford Boro	1,230	1,305	1,332	1,337	1,396
Raritan Twp.	6,934	7,279	7,610	7,656	7,842
Readington Twp.	7,688	7,913	7,967	8,014	8,181
Stockton Boro	619	621	652	652	653
Tewksbury Twp.	2,959	3,138	3,277	3,422	3,420
Union Twp.	2,351	2,714	2,749	2,781	2,778
West Amwell Twp.	2,142	2,255	2,285	2,288	2,276
Total	69,718	72,510	74,355	75,902	76,700
<u>MERCER COUNTY</u>					
East Windsor Twp.	11,736	14,028	15,868	17,702	19,537
Ewing Twp.	32,831	33,945	34,821	34,742	34,920
Hamilton Twp.	79,609	80,779	82,114	82,860	83,646
Hightstown Boro	5,431	5,478	5,490	5,469	5,559
Hopewell Boro	2,271	2,273	2,265	2,238	2,237
Hopewell Twp.	10,030	10,260	10,358	10,345	10,515
Lawrence Twp.	19,567	19,860	20,030	19,992	20,122
Pennington Boro	2,151	2,259	2,269	2,265	2,319
Princeton Boro	12,311	12,585	12,615	12,582	12,700
Princeton Twp.	13,651	13,785	13,814	13,763	13,853
Trenton City	104,786	104,942	104,731	103,818	102,935
Washington Twp.	3,311	3,381	3,724	3,785	3,813
West Windsor Twp.	6,431	6,927	7,496	7,739	7,845
Total	304,116	310,502	315,595	317,300	320,001

REVISED
RESIDENT POPULATION

	CENSUS	ESTIMATES			
	April 1, 1970	July 1, 1971	July 1, 1972	July 1, 1973	July 1, 1974
<u>MIDDLESEX COUNTY</u>					
Carteret Boro	23,137	23,141	23,004	22,590	22,258
Cranbury Twp.	2,253	2,246	2,240	2,234	2,260
Dunellen Boro	7,072	7,082	7,069	6,992	6,900
East Brunswick Twp.	34,166	36,252	36,642	37,435	37,715
Edison Twp.	67,120	67,709	67,855	67,510	66,497
Helmetta Boro	955	955	951	936	925
Highland Park Boro	14,385	14,409	14,428	14,229	14,177
Jamesburg Boro	4,584	4,847	4,859	4,857	4,950
Metuchen Boro	16,031	16,019	15,856	15,505	15,447
Middlesex Boro	15,038	15,049	14,986	14,766	14,625
Milltown Boro	6,470	6,657	6,770	6,867	6,868
Monroe Twp.	9,138	9,370	9,993	10,850	11,618
New Brunswick City	41,885	42,649	43,494	43,428	43,516
North Brunswick Twp.	16,691	16,831	16,950	17,586	18,346
* Old Bridge Twp.	48,715	49,242	49,347	49,108	48,720
Perth Amboy City	38,798	38,837	38,234	38,017	37,839
Piscataway Twp.	36,418	37,582	38,195	38,176	38,142
Plainsboro Twp.	1,648	1,659	1,738	2,404	3,555
Sayreville Boro	32,508	33,260	33,360	33,214	32,725
South Amboy City	9,338	9,413	9,432	9,384	9,257
South Brunswick Twp.	14,058	14,588	15,422	15,687	16,265
South Plainfield Boro	21,142	21,333	21,376	21,272	21,096
South River Boro	15,428	15,701	15,768	15,717	15,662
Spotswood Boro	7,891	7,960	8,008	8,231	8,246
Woodbridge Boro	98,944	99,213	99,392	98,904	98,591
Total	583,813	592,004	595,369	595,899	596,200
<u>MONMOUTH COUNTY</u>					
** Aberdeen Twp.	17,680	18,378	18,515	18,721	18,763
Allenhurst Boro	1,012	1,008	986	949	939
Allentown Boro	1,603	1,628	1,657	1,863	2,015
Asbury Park City	16,533	16,515	16,514	15,660	15,523
Atlantic Highlands Boro	5,102	5,136	5,146	5,127	5,029
Avon-by-the-Sea Boro	2,163	2,221	2,301	2,302	2,212
Belmar Boro	5,782	5,983	6,082	6,074	6,009
Bradley Beach Boro	4,163	4,251	4,418	4,419	4,406
Brielle Boro	3,594	3,679	3,700	3,841	3,895
Colts Neck Twp.	5,819	6,252	6,495	6,665	6,815
Deal Boro	2,401	2,418	2,424	2,414	2,395
Eatontown Boro	14,619	16,438	14,337	14,181	14,033
Englishtown Boro	1,048	1,089	1,091	1,088	1,092
Fair Haven Boro	6,142	6,144	6,096	5,999	5,913

* Madison Twp. name changed to Old Bridge Twp., November 4, 1975.

** Matawan Twp. name changed to Aberdeen Twp., January 1, 1978.

REVISED
RESIDENT POPULATION

MONMOUTH COUNTY (Cont.)	CENSUS	ESTIMATES			
	April 1, 1970	July 1, 1971	July 1, 1972	July 1, 1973	July 1, 1974
Farmingdale Boro	1,148	1,439	1,450	1,466	1,453
Freehold Boro	10,545	10,788	10,851	10,992	10,963
Freehold Twp.	13,185	14,110	14,853	15,594	16,335
Hazlet Twp.	22,239	22,266	22,239	21,940	21,670
Highlands Boro	3,916	3,964	4,040	4,610	4,597
Holmdel Twp.	6,117	6,600	6,883	7,078	7,073
Howell Twp.	21,756	22,420	23,253	24,771	27,374
Interlaken Boro	1,182	1,180	1,165	1,132	1,120
Keansburg Boro	9,720	9,828	10,124	10,109	9,994
Keyport Boro	7,205	7,197	7,107	6,945	6,826
Little Silver Boro	6,010	6,019	6,008	5,947	5,903
Loch Arbour Vil.	395	411	413	411	396
Long Branch City	31,774	32,091	32,177	32,081	32,011
Manalapan Twp.	14,049	14,680	16,378	16,407	16,809
Manasquan Boro	4,971	5,162	5,177	5,169	5,137
Marlboro Twp.	12,273	12,714	13,912	14,114	14,673
Matawan Boro	9,136	9,220	9,260	9,374	9,302
Middletown Twp.	54,623	56,025	56,590	56,800	57,082
Millstone Twp.	2,535	2,598	2,655	2,693	2,781
Monmouth Beach Boro	2,042	2,079	2,229	2,286	2,604
Neptune Twp.	27,863	28,052	28,115	28,015	27,767
Neptune City Boro	5,502	5,519	5,556	5,528	5,820
Ocean Twp.	18,643	20,181	21,872	22,745	23,292
Oceanport Boro	7,503	7,407	6,540	6,350	6,271
Red Bank Boro	12,847	12,848	12,740	12,533	12,406
Roosevelt Boro	814	818	821	819	854
Rumson Boro	7,421	7,481	7,496	7,456	7,404
Sea Bright Boro	1,339	1,498	1,633	1,675	1,994
Sea Girt Boro	2,207	2,211	2,209	2,191	2,178
Shrewsbury Boro	3,315	3,319	3,290	3,232	3,156
Shrewsbury Twp.	1,164	1,173	1,207	1,228	1,233
South Belmar Boro	1,490	1,494	1,488	1,470	1,435
Spring Lake Boro	3,896	3,902	3,903	3,860	3,834
Spring Lake Heights Boro	4,602	4,991	5,000	5,013	5,008
* Tinton Falls Boro	8,395	8,398	8,327	8,207	8,138
Union Beach Boro	6,472	6,479	6,472	6,370	6,273
Upper Freehold Twp.	2,551	2,597	2,616	2,629	2,659
Wall Twp.	16,498	17,797	17,971	17,924	17,975
West Long Branch Boro	6,845	6,949	7,003	7,031	7,065
Total	461,849	475,045	480,785	483,498	487,904
 <u>MORRIS COUNTY</u>					
Boonton Town	9,261	9,275	9,187	9,034	8,899
Boonton Twp.	3,070	3,078	3,065	3,029	2,994
Butler Boro	7,051	7,287	7,431	7,889	7,805
Chatham Boro	9,566	9,590	9,546	9,424	9,164
Chatham Twp.	8,093	8,389	8,519	8,416	8,364

* New Shrewsbury Boro name changed to Tinton Falls Boro, November 4, 1975.

REVISED
RESIDENT POPULATION

MORRIS COUNTY (Cont.)	CENSUS	ESTIMATES			
	April 1, 1970	July 1, 1971	July 1, 1972	July 1, 1973	July 1, 1974
Chester Boro	1,299	1,329	1,364	1,365	1,348
Chester Twp.	4,265	4,368	4,400	4,432	4,515
Denville Twp.	14,045	14,095	14,101	13,983	13,817
Dover Town	15,039	15,064	14,915	14,690	14,533
East Hanover Twp.	7,734	8,164	8,257	8,537	8,465
Florham Park Boro	9,373*	9,376	9,337	9,195	9,047
Hanover Twp.	10,700	10,970	11,239	11,345	11,258
Harding Twp.	3,249	3,257	3,253	3,200	3,162
Jefferson Twp.	14,122	14,858	15,155	15,116	14,973
Kinnelon Boro	7,600	7,874	7,907	7,885	7,817
Lincoln Park Boro	9,034	9,050	8,980	8,829	8,725
Madison Boro	16,710	16,860	16,894	16,834	16,230
Mendham Boro	3,729	3,998	4,314	4,525	4,497
Mendham Twp.	3,697	3,850	3,980	4,086	4,099
Mine Hill Twp.	3,557	3,575	3,582	3,570	3,529
Montville Twp.	11,846	12,457	12,593	12,683	12,664
Morris Twp.	18,135*	18,246	18,395	18,315	18,223
Morris Plains Boro	5,540	5,551	5,498	5,433	5,363
Morristown Town	17,662	17,705	17,509	17,414	16,989
Mountain Lakes Boro	4,739	4,741	4,663	4,564	4,508
Mount Arlington Boro	3,590	3,837	3,860	3,856	3,758
Mount Olive Twp.	10,394	13,717	15,217	15,687	16,446
Netcong Boro	2,858	2,893	2,920	3,019	3,080
Parsippany-Troy Hills Twp.	55,112	55,139	54,497	53,189	52,445
Passaic Twp.	7,393	7,412	7,387	7,285	7,197
Pequannock Twp.	14,350	14,390	14,346	14,183	13,925
Randolph Twp.	13,296	14,265	14,776	15,262	16,264
Riverdale Boro	2,729	2,737	2,735	2,708	2,679
Rockaway Boro	6,383	6,410	6,420	6,396	6,274
Rockaway Twp.	18,955	19,098	19,157	19,205	19,151
Roxbury Twp.	15,754	16,564	16,905	16,896	16,727
Victory Gardens Boro	1,027	1,031	1,052	1,225	1,212
Washington Twp.	6,962	7,643	7,751	7,761	7,901
Wharton Boro	5,535	5,547	5,511	5,439	5,355
Total	383,454	393,691	396,618	395,904	393,402

OCEAN COUNTY

Barnegat Twp.	1,539	2,467	3,209	3,951	4,693
Barnegat Light Boro	554	637	689	698	752
Bay Head Boro	1,083	1,103	1,107	1,099	1,134
Beach Haven Boro	1,488	1,588	1,630	1,651	1,654
Beachwood Boro	4,390	4,747	5,135	5,477	6,062
Berkeley Twp.	7,918	9,833	11,238	12,465	13,824
Brick Twp.	35,057	37,019	39,733	45,831	47,542

* These represent corrections to the official counts certified by the U.S. Census Bureau on July 24, 1978.

** Union Twp. name changed to Barnegat Twp., January 1, 1977.

REVISED
RESIDENT POPULATION

	CENSUS	ESTIMATES			
	April 1, 1970	July 1, 1971	July 1, 1972	July 1, 1973	July 1, 1974
<u>OCEAN COUNTY (Cont.)</u>					
Dover Twp.	43,751	48,353	52,483	54,675	54,967
Eagleswood Twp.	823	868	871	891	909
Harvey Cedars Boro	314	345	375	377	386
Island Heights Boro	1,397	1,405	1,409	1,396	1,397
Jackson Twp.	18,276	20,767	21,129	21,140	21,981
Lacey Twp.	4,616	5,922	6,971	8,017	9,062
Lakehurst Boro	2,641	3,147	3,253	3,345	3,572
Lakewood Twp.	25,223	27,338	31,573	32,639	33,188
Lavallette Boro	1,509	1,680	1,792	1,888	1,931
Little Egg Harbor Twp.	2,972	3,758	4,389	5,019	5,648
Long Beach Twp.	2,910	3,251	3,643	3,766	3,785
Manchester Twp.	7,550	8,636	9,994	12,793	15,756
Mantoloking Boro	319	349	378	383	407
Ocean Twp.	2,222	2,421	2,641	3,277	3,517
Ocean Gate Boro	1,081	1,173	1,273	1,320	1,328
Pine Beach Boro	1,395	1,456	1,486	1,514	1,554
Plumsted Twp.	4,113	4,356	4,369	4,348	4,361
Point Pleasant Boro	15,968	16,524	16,805	16,733	17,075
Point Pleasant Beach Boro	4,882	5,273	5,348	5,332	5,493
Seaside Heights Boro	1,248	1,339	1,424	1,423	1,498
Seaside Park Boro	1,432	1,557	1,677	1,825	1,936
Ship Bottom Boro	1,079	1,244	1,364	1,383	1,448
South Toms River Boro	3,981	4,027	4,035	3,999	4,045
Stafford Twp.	3,684	4,204	4,576	4,872	5,733
Surf City Boro	1,129	1,224	1,383	1,475	1,514
Tuckerton Boro	1,926	2,151	2,374	2,696	2,748
Total	208,470	230,162	249,756	267,698	280,900
<u>PASSAIC COUNTY</u>					
Bloomington Boro	7,797	7,916	7,977	8,181	8,250
Clifton City	82,437	82,661	82,457	81,503	81,134
Haledon Boro	6,767	6,780	6,731	6,644	6,593
Hawthorne Boro	19,173	19,240	19,172	19,104	18,714
Little Falls Twp.	11,727	12,240	12,321	12,434	12,373
North Haledon Boro	7,614	7,785	7,831	7,891	7,749
Passaic City	55,124	55,495	54,799	53,919	53,976
Paterson City	144,824	146,668	148,143	149,618	151,093
Pompton Lakes Boro	11,397	11,465	11,525	11,611	11,569
Prospect Park Boro	5,176	5,191	5,153	5,127	5,023
Ringwood Boro	10,393	11,057	12,238	12,378	12,418
Totowa Boro	11,580	11,749	11,808	11,898	11,702
Wanaque Boro	8,636	8,958	9,190	9,465	9,447
Wayne Twp.	49,141	49,413	49,505	49,838	49,636
West Milford Twp.	17,304	18,446	19,139	19,640	19,669
West Paterson Boro	11,692	11,725	11,671	11,565	11,508
Total	460,782	466,789	469,660	470,816	470,854

REVISED
RESIDENT POPULATION

	CENSUS	ESTIMATES			
	April 1, 1970	July 1, 1971	July 1, 1972	July 1, 1973	July 1, 1974
<u>SALEM COUNTY</u>					
Alloway Twp.	2,550	2,556	2,558	2,548	2,525
* Carneys Point Twp.	7,016	7,073	7,368	7,593	7,798
Elmer Boro	1,592	1,636	1,640	1,636	1,603
Elsinboro Twp.	1,204	1,201	1,184	1,143	1,113
Lower Alloways Creek Twp.	1,400	1,402	1,372	1,364	1,397
Mannington Twp.	1,913	1,939	1,943	1,936	1,905
Oldmans Twp.	2,088	2,144	2,152	2,145	2,067
Penns Grove Boro	5,727	5,734	5,735	5,649	5,590
Pennsville Twp.	13,296	13,555	13,770	13,847	13,711
Pilesgrove Twp.	2,706	2,777	2,814	2,820	2,784
Pittsgrove Twp.	4,618	4,738	4,772	4,816	4,836
Quinton Twp.	2,567	2,582	2,588	2,653	2,623
Salem City	7,648	7,654	7,615	7,527	7,197
Upper Pittsgrove Twp.	2,884	2,960	2,986	3,035	3,049
Woodstown Boro	3,137	3,140	3,127	3,089	3,202
Total	60,346	61,091	61,624	61,801	61,400
<u>SOMERSET COUNTY</u>					
Bedminster Twp.	2,597	2,798	2,811	2,813	2,828
Bernards Twp.	13,305	13,440	13,469	13,419	13,338
Bernardsville Boro	6,652	6,670	6,681	6,654	6,617
Bound Brook Boro	10,450	10,439	10,334	10,088	9,991
Branchburg Twp.	5,742	5,913	6,063	6,084	6,292
Bridgewater Twp.	30,235	30,641	30,689	30,604	30,888
Far Hills Boro	780	781	779	773	771
Franklin Twp.	30,389	30,759	30,864	30,947	30,879
Green Brook Twp.	4,302	4,385	4,443	4,456	4,417
Hillsborough Twp.	11,061	11,305	11,440	11,784	12,857
Manville Boro	13,029	13,023	12,896	12,659	12,555
Millstone Boro	630	632	632	628	626
Montgomery Twp.	6,353	6,536	6,601	6,742	6,998
North Plainfield Boro	21,796	21,739	21,318	20,701	20,125
Peapack-Gladstone Boro	1,924	1,962	1,971	1,976	1,978
Raritan Boro	6,691	6,690	6,635	6,519	6,417
Rocky Hill Boro	917	929	937	935	920
Somerville Boro	13,652	13,655	13,592	13,525	13,437
South Bound Brook Boro	4,525	4,707	4,731	4,715	4,608
Warren Twp.	8,592	9,257	9,407	9,629	9,624
Watchung Boro	4,750	4,831	4,870	4,948	5,135
Total	198,372	201,092	201,163	200,599	201,301

* Upper Penns Neck Twp. name changed to Carneys Point Twp., November 10, 1975.

REVISED
RESIDENT POPULATION

SUSSEX COUNTY	CENSUS		ESTIMATES		
	April 1, 1970	July 1, 1971	July 1, 1972	July 1, 1973	July 1, 1974
Andover Boro	813	898	908	896	939
Andover Twp.	3,040	3,377	3,536	3,575	3,704
Branchville Boro	911	981	983	977	1,017
Byram Twp.	4,592	5,067	5,447	5,884	6,198
Frankford Twp.	2,777	2,937	3,063	3,275	3,351
Franklin Boro	4,236	4,453	4,469	4,425	4,502
Fredon Twp.	1,372	1,482	1,610	1,698	1,797
Green Twp.	1,343	1,556	1,875	1,923	2,034
Hamburg Boro	1,820	1,974	1,989	1,968	2,089
Hampton Twp.	2,091	2,228	2,334	2,399	2,594
Hardyston Twp.	3,499	3,613	3,653	3,839	3,942
Hopatcong Boro	9,052	9,555	10,910	11,616	11,936
Lafayette Twp.	1,202	1,282	1,417	1,447	1,472
Montague Twp.	1,131	1,192	1,295	1,431	1,661
Newton Town	7,297	7,358	7,438	7,908	8,065
Ogdensburg Boro	2,222	2,245	2,536	2,638	2,732
Sandyston Twp.	1,303	1,373	1,440	1,424	1,448
Sparta Twp.	10,819	11,476	11,494	11,543	11,742
Stanhope Boro	3,040	3,092	3,150	3,753	3,844
Stillwater Twp.	2,158	2,296	2,444	2,524	2,584
Sussex Boro	2,038	2,277	2,291	2,278	2,379
Vernon Twp.	6,059	6,915	7,575	8,380	9,032
Walpack Twp.	384	408	410	405	412
Wantage Twp.	4,329	4,585	4,861	5,395	5,527
Total	77,528	82,620	87,128	91,601	95,001
<u>UNION COUNTY</u>					
Berkeley Heights Twp.	13,078	13,407	13,431	13,411	13,148
Clark Twp.	18,829	18,871	18,618	18,516	18,277
Cranford Twp.	27,391	27,398	27,181	26,804	26,471
Elizabeth City	112,654	112,568	111,132	109,080	107,602
Fanwood Boro	8,920	8,931	8,906	8,808	8,597
Garwood Boro	5,260	5,256	5,187	5,085	5,018
Hillside Twp.	21,636	21,651	21,546	21,261	20,879
Kenilworth Boro	9,165	9,170	9,129	8,994	8,877
Linden City	41,409	41,436	41,349	40,677	40,184
Mountainside Boro	7,520	7,524	7,473	7,377	7,218
New Providence Boro	13,796	13,824	13,827	13,750	13,418
Plainfield City	46,862	46,936	46,166	45,928	45,300
Rahway City	29,114	29,142	29,036	28,691	28,358
Roselle Boro	22,585	22,633	22,589	22,497	22,205
Roselle Park Boro	14,277	14,298	14,303	13,963	13,781
Scotch Plains Twp.	22,279	22,323	22,318	22,179	21,900
Springfield Twp.	15,740	15,738	15,604	15,341	14,914
Summit City	23,620	23,611	23,395	22,955	22,669
Union Twp.	53,077	53,158	52,501	52,257	51,320
Westfield Town	33,720	33,731	33,479	33,016	32,306
Winfield Twp.	2,184	2,181	2,155	2,109	2,059
Total	543,116	543,787	539,325	532,699	524,501

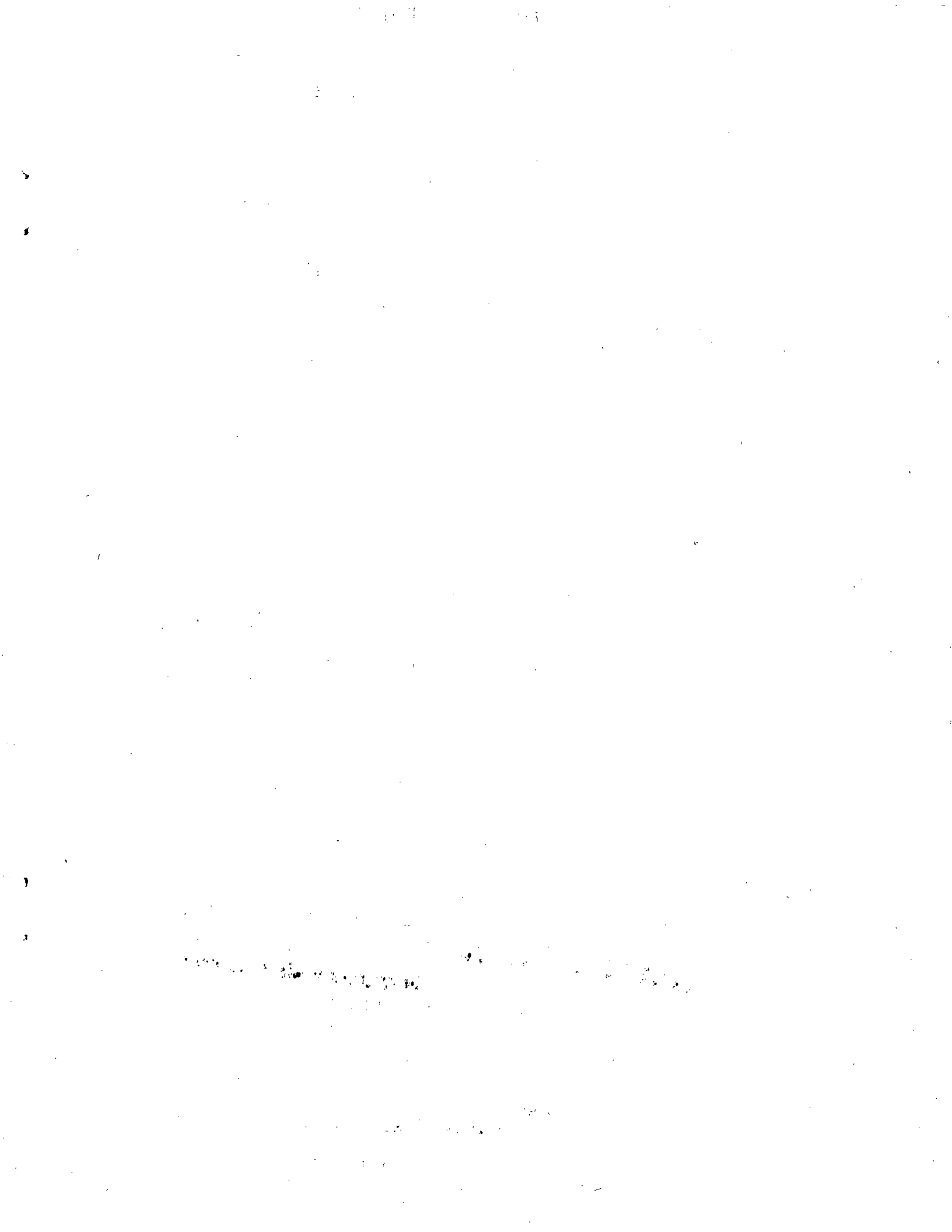
REVISED
RESIDENT POPULATION

WARREN COUNTY	CENSUS	ESTIMATES			
	April 1, 1970	July 1, 1971	July 1, 1972	July 1, 1973	July 1, 1974
Allamuchy Twp.	1,138	1,168	1,179	1,177	1,264
Alpha Boro	2,829	2,825	2,784	2,722	2,705
Belvidere Town	2,722	2,730	2,734	2,723	2,696
Blairstown Twp.	2,189	2,282	2,386	2,541	2,755
Franklin Twp.	1,973	2,017	2,022	2,041	2,071
Frelinghuysen Twp.	1,118	1,122	1,139	1,135	1,133
Greenwich Twp.	1,482	1,481	1,448	1,427	1,507
Hackettstown Town	9,472	9,501	9,532	9,628	9,689
Hardwick Twp.	548	581	586	618	670
Harmony Twp.	2,195	2,203	2,207	2,198	2,268
Hope Twp.	1,140	1,166	1,178	1,176	1,271
Independence Twp.	2,057	2,101	2,128	2,450	2,488
Knowlton Twp.	1,738	1,765	1,768	1,763	1,862
Liberty Twp.	1,229	1,241	1,246	1,252	1,261
Lopatcong Twp.	3,144	3,216	3,294	4,060	4,161
Mansfield Twp.	3,546	3,623	3,634	4,115	4,851
Oxford Twp.	1,742	1,750	1,774	1,956	1,954
Pahaquarry Twp.	71	68	65	63	61
Phillipsburg Town	17,849	17,891	17,914	17,840	17,739
Pohatcong Twp.	3,924	3,928	3,917	3,878	3,921
Washington Boro	5,943	6,006	6,084	6,558	6,542
Washington Twp.	3,585	3,651	3,678	3,715	3,763
White Twp.	2,326	2,411	2,429	2,464	2,569
Total	73,960	74,727	75,126	77,500	79,201

~~Library copy from NJS~~

New Jersey State Library

New Jersey State Library



**office of demographic & economic analysis
div. of planning & research
dept. of labor & industry
p. o. box 845
trenton n. j. 08625**

**BULK RATE
U.S. POSTAGE PAID
Trenton, N. J.
Permit No. 263**

TO: