

STATE OF NEW JERSEY
DEPARTMENT OF INSTITUTIONS AND AGENCIES

PUBLICATION 17

Trenton

June 1929

County and State
Welfare Work in
New Jersey

New Jersey
State Board of Control
of
Institutions and Agencies

Governor Morgan F. Larson, Ex-Officio

Ellis P. Earle, President.....Montclair	Frank A. Fetridge.....Chatham
F. Wallis Armstrong.....Moorestown	William J. Kirby.....Somerville
William C. Cannon.....Montclair	Mrs. Rulif V. Lawrence.....Freehold
Dr. Ambrose F. Dowd.....Newark	Mrs. Lewis S. Thompson...Red Bank

COMMISSIONER

William J. Ellis, Phil. D.....Trenton

SECRETARY

Agnes M. Ryan.....Trenton

**NEW JERSEY STATE DEPARTMENT OF
INSTITUTIONS AND AGENCIES**

STATE HOUSE, TRENTON

Central Office Staff

CommissionerDr. William J. Ellis
Secretary to the Commissioner.....Agnes M. Ryan

Division of Classification and Parole....Dr. C. T. Jones, Director
Children's BureauMrs. C. B. Meytrott, Assistant Director
Bureau of ParoleSt. Alban Kite, Assistant Director
Helen M. Wilde, Supervisor of Work
with Women and Girls

Division of Medicine.....Dr. Ellen C. Potter, Director

Division of State Use and Institutional
EmploymentMaxwell G. Rockhill, Director
Richard W. Wills, Assistant Director

Division of Inspection and Legal
SettlementCapt. George J. Giger, Director
State Adjusters and Collectors.....Charles H. Edmund
G. Howell Mutchler
Field AgentsLaura Howell
Mrs. May T. Hill
Mrs. Elizabeth Wyatt
Deportation AgentElsie M. Cornew

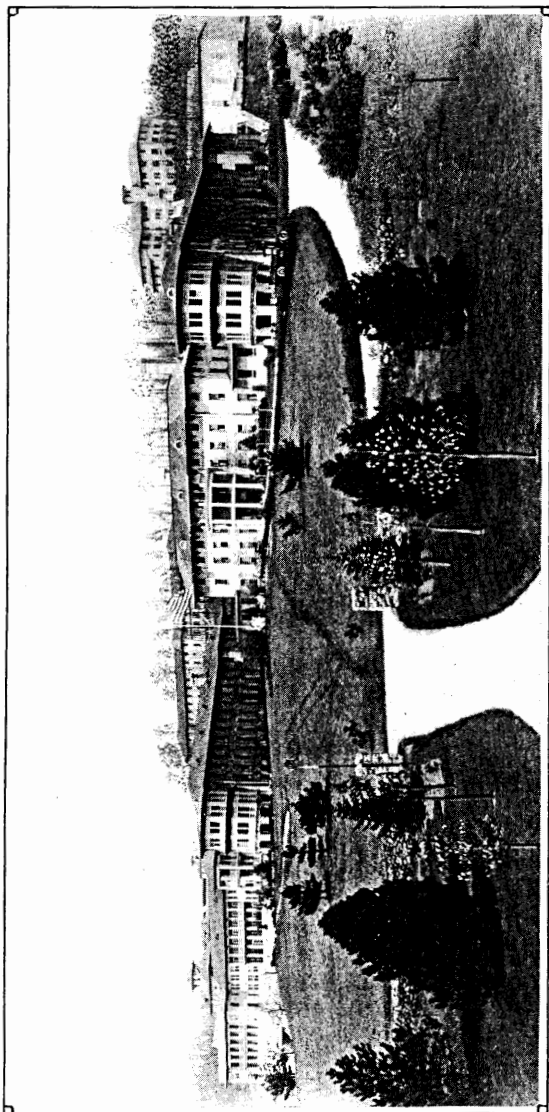
Research DivisionDr. Emil Frankel, Director
Helen E. Heyer, Assistant

Division of Administration
Supervising AccountantFrancis P. Gerry
Supervising StewardGeorge Holbig
Farm SupervisorWilliam A. Houston

Division of Architecture and Construction.Charles N. Leathem, Jr. Director
J. H. Gandolpho, Assistant Director

**COUNTY AND STATE WELFARE WORK
IN NEW JERSEY**

- I. Foreword
- II. County Welfare Programs
- III. Welfare Work in Each County
- IV. State Welfare Work
- V. Directory of Public Welfare Institutions



The State Sanatorium for Tuberculous Diseases, Glen Gardner

I. FOREWORD

New Jersey, just as other States, has a responsibility for the safety, health and happiness of its citizens. Each of the twenty-one counties and each municipality likewise has its own share of responsibility for those residing within its boundaries.

The State and many of the counties have developed manifold evidences of their purpose to alleviate the needs of those members of society who are mentally and physically handicapped, and have bent their efforts to restoring the health of those persons and to assisting them to a social and economic independence. Attention has likewise been concentrated upon the delinquents that they might improve their own lives and become useful citizens rather than destructive members of society.

Such a welfare program is not confined to a single political or geographic unit. It demands the active cooperation of the State, of the counties, and of the municipalities as governmental units, and of public and private agencies and individuals in the communities. Citizens generally and the public officials are actively interested and are prepared to work with the State and county and the local community in the unified program which allocates to each group the services which it is best prepared to handle.

The Department of Institutions and Agencies, as a state welfare department, has endeavored to work with all such groups. It has recognized that certain types of defectives and delinquents are considered the State's own peculiar problem. It has sought to assist in building up local initiative and to promote a sense of local responsibility toward public welfare. It has aimed to disseminate a wider knowledge of the methods of care, treatment and training of the mentally and physically handicapped and has advised as to standards of supervision, education, housing and medical care of the wards of the State, the counties and municipalities. It has established clinical services in the State institutions to serve throughout the State and, with local general hospitals or special hospitals for mentally diseased or tuberculous, has worked for the development of clinical services in the community. There has been a splendid spirit of cooperation between the State institutions and the local clinics and hospitals.

Public opinion throughout the State gives intelligent support to and reveals an understanding knowledge of the needs not only of State institutional work but of the hospital and institutional program and the entire field of social welfare in its local, municipal and county aspects.

The following chapters describing some of the most outstanding features of county and State welfare work appeared in a slightly

abbreviated form as Chapter XII of "New Jersey—Life, Industries and Resources of a Great State" published recently by the New Jersey State Chamber of Commerce. In Chapter V will be found a directory of the State, county and municipal institutions and of the county adjusters and physicians, and the directors of the county boards of freeholders who with the boards of managers of the county institutions are the official representatives of the counties in their welfare work.

This publication was prepared by the Research Division of the Department of Institutions and Agencies under the direction of Dr. Emil Frankel assisted by Miss Helen E. Heyer of the research staff.

William J. Ellis, Commissioner
Department Institutions and Agencies

II. COUNTY WELFARE PROGRAMS

County welfare work in New Jersey, broadly speaking, includes all types of organized public and private agencies for the care and protection of the dependent, neglected, delinquent, physically handicapped, and mentally defective and mentally diseased. It includes also, efforts to prevent dependency and delinquency and to promote wholesome and healthful community life.

Although the State has definite responsibilities toward all its citizens and especially toward certain dependents and delinquents the county has as great and perhaps an even more personal responsibility toward its citizens through its consciousness of their local situations and needs.

County Obligations

The county as a governmental unit has definite obligations laid upon it in the field of public welfare. The county boards of freeholders have come to exercise important welfare functions through programs of prevention of dependency and delinquency as well as through the work of the regular county institutions and through the financial support they give to general hospitals, children's homes, and other institutions that care for the sick or indigent within the county.

Thus, hospitals for mental disease are maintained by six counties and sanatoria for tuberculosis by eleven counties. Those counties which do not have institutions of their own contribute to the support of their patients in the institutions of neighboring counties. Counties also maintain almshouses or welfare houses or hospitals for the indigent and chronically ill and assume the support of some of their citizens as patients in State institutions.

The County Adjuster, An Important County Welfare Official

The county adjuster of each county assists persons to enter State and county institutions, determines the extent of indigency of any person who applies for State or county support in an institution, has charge and supervision of the preparation of papers relating to his commitment in the county, and aids the overseer of the poor in returning an indigent person to his place of legal settlement.

Poor Relief

The poor law administration of New Jersey through the modern poor relief law of 1924 provides for the rendering of constructive

service. Through it, outdoor relief is not mere almsgiving but a constructive piece of family rehabilitation and aids in the prevention of pauperism through trained social work. As the features of the law are accepted in local practice, it will extend welfare activities along more and more progressive lines.

The old-time almshouses, refuge of society's unfortunate and afflicted, which offered only custodial care without rehabilitative efforts, are giving away to "welfare houses" which seek to provide a real home not only for indigents but for persons who can contribute toward their partial support, to give adequate hospital care to the temporarily and chronically ill, and to classify their people so that each group will have the care that will most benefit it physically, and the living conditions that will best meet its social needs.

Dependent and Neglected Children

The county and the municipality are directly responsible for the support of neglected and dependent children in cooperation with the State Board of Children's Guardians. This State organization supervises all children committed to it by the county court or the local overseer of the poor, but the financial support comes from county or municipal funds whether the children are living at home and receiving aid from the Widows' Pension Fund, or whether they are in free or boarding homes receiving aid as directed by the Welfare Act.

A number of children's homes are operated privately or receive some aid from county funds.

Health

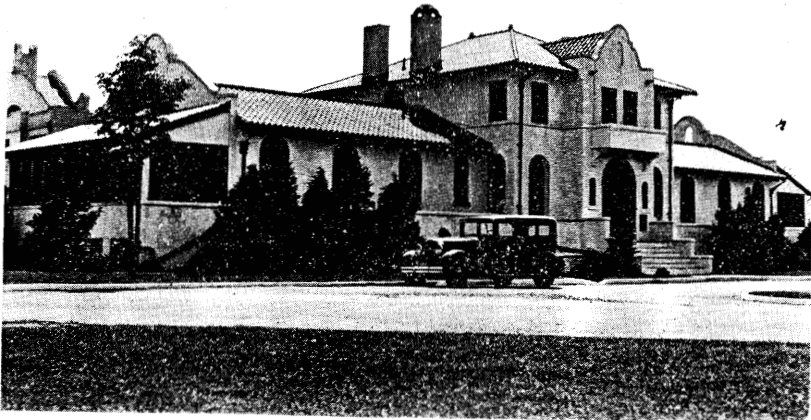
The State Board of Health works throughout the communities and cooperates with the local boards of health in preventing disease, in solving health problems, in raising sanitary standards and in enforcing public health laws and regulations. Through its Bureau of Child Hygiene, community demonstrations are given to stimulate interest in continuous child hygiene programs beginning with pre-natal and maternity care, and to emphasize the importance of examinations of pre-school children in order to detect remediable defects before the children enter school.

General Hospitals

Seventy-four general hospitals in the State with a capacity of 12,100 beds administer to the physically ill. These hospitals are not run for profit but are largely supported by private charity. More than fifty-five per cent of their patients are ward cases. More than



Nursery of the Bergen County Children's Home



Bergen County Isolation Hospital

\$1,050,000 is given by the counties of the State annually to compensate the hospitals for the free service rendered. Municipalities appropriate over two and a quarter million dollars for the same purpose.

Hudson County maintains a general hospital of its own and Jersey City, Newark, Irvington, Perth Amboy and a few others maintain city general hospitals.

Schools

The State Board of Education, through county superintendents of education and helping teachers, is extending its social work along preventive lines through the establishment of vocational and continuation schools, special classes for the mentally defective and retarded, the crippled and the blind, night schools for the foreign born and those employed during the day, and through the extension of the health work in the schools. The helping teachers employed in rural counties particularly assist in carrying out both the educational and social objectives of the State Board of Education under the direction of the county superintendent, who is a representative of the Commissioner of Education.

Library

Functioning through the State Library Commission, county libraries are established in towns and villages and a traveling library is brought to rural sections with its attendant educational, recreational, and stimulating influence.

Probation

New Jersey is in the pioneer group of states which early appreciated the social and economic soundness of applying the principles of probation in its counties to both adults and children. Each county has a probation officer or officers who, by their careful supervision of the offenders, help them to adjust their relations to their own communities and to establish contacts that will make for better living for themselves and their families, that they may be turned aside from a career of crime and become assets rather than social liabilities and as such, a continuing menace.

County Agricultural Agents

County agricultural agents, functioning in all the twenty-one counties, except Hudson and Union, are invaluable aids to the welfare of the counties in such an agricultural state as New Jersey. They give general information on farming lines throughout their counties, analyze soil conditions, advise as to crops, insect and disease control,

and the general problems of the farmers, organize meetings and demonstrations of planting, and cooperate with the State Department of Agriculture and the State Agricultural College in their projects.

Twelve counties have home demonstration agents and there are two agents at large who spread the principles of home economics throughout the counties by club, lecture, and actual demonstration work in homes and in groups.

Seven counties have county club agents whose duty is extension work among the boys and girls in gardening, chicken raising, pig and calf raising, and similar activities.

County Welfare Organizations

Public and private agencies in the counties are gradually coordinating their work so that every part of the counties may be reached and the varied needs of the citizens met without overlapping of activities in one section of the county to the detriment of another section, or without emphasis on one phase of the work to the neglect of others.

By the establishment of the Monmouth County Organization for Social Work in 1912, Monmouth County became one of the pioneers in the development of county welfare work in the United States and early demonstrated the value of bringing together the activities of the public and private welfare agencies in the county and of working with local and State-wide agencies.

The county is the logical unit for carrying out a social welfare program locally, because the citizens are in direct contact with social conditions which they can understand and control through their local governments or through their welfare organizations, because for the most part the population is of such size as to permit effective organization for social work, and of such area as to permit the workers to know intimately and visit frequently those who need them.

Cooperation Between State and County

Cooperation between the State and County is particularly close through the relationship of the State Department of Institutions and Agencies with the county institutions for the tuberculosis and the mentally ill and through certain State agencies, such as the State Board of Children's Guardians and the Commission for the Blind which, supervised by the State Department, function through or in the individual counties.

Cooperation between the State departments and county organizations is important in improving the county welfare services available, in extending the scope of the existing agencies, and in creating new ones to meet unfilled needs. Neither can do its work well without mutual understanding of their common problems and cooperation in their

solution. The development of a sense of local responsibility for conditions that make for dependency and delinquency, of the importance of coordinating and developing county agencies, of improvement in the quality of service rendered, as well as intelligent use of the State's resources, is necessary for an adequate program of county welfare.

Private Agencies

Among the private social service and health organizations at work in the counties may be mentioned: the Tuberculosis Association of each county, with county and local subdivisions, all cooperating with the State Tuberculosis League; the Health Leagues; the Visiting Nurse Associations; clinics (for tuberculosis, mental diagnosis, and other diseases) in hospitals, communities, schools, and industrial establishments; Red Cross units; privately supported homes for neglected and dependent children; child-placing agencies; homes for the aged and indigent, the incurable, the crippled, and otherwise dependent; county



The Metcalf Memorial Building at Orange containing Offices of the Welfare Federation, eight of the Federation Agencies, the Council of Social Agencies, and the Dental Clinic

and local Y.M.C.A. and Y.W.C.A. organizations, with their educational, recreational and social programs in cities, towns, and rural sections, in industrial and in foreign groups; the Boy and Girl Scouts, organized by county or local units; the Needlework Guild of America; the Salvation Army; the Church Mission of Help; Parent-Teacher Associations; Women's Clubs; Societies for Organized Charity; Societies for the Prevention of Cruelty to Children; benevolent societies and similar organizations for social or family relief and welfare;

Kiwanis, Lions, Rotary, Exchange, and other service clubs; Elks, Knights of Columbus, Masons, Odd Fellows, and other fraternal orders, which have welfare programs; Jewish welfare societies; Catholic welfare societies throughout the State with diocesan headquarters at Newark and Trenton; church societies; the American Legion and Disabled American Veterans, and their auxiliaries; Travelers Aid Societies.

The New Jersey Conference for Social Work, with headquarters in Newark, cooperates with local welfare groups in promoting State-wide interest in social questions.

Municipalities as Welfare Units

With the States and the counties undertaking the care of the mentally ill and defective, the tuberculous, and the delinquents of the more serious types, it remains for the municipalities to organize the general public relief work to deal with the community problems. As stated previously, the municipalities cooperate with the counties in financing the care of the neglected and dependent children committed to the State Board of Children's Guardians, and each municipality has its own overseer of the poor to administer outdoor relief and to assist admissions to the almshouses.

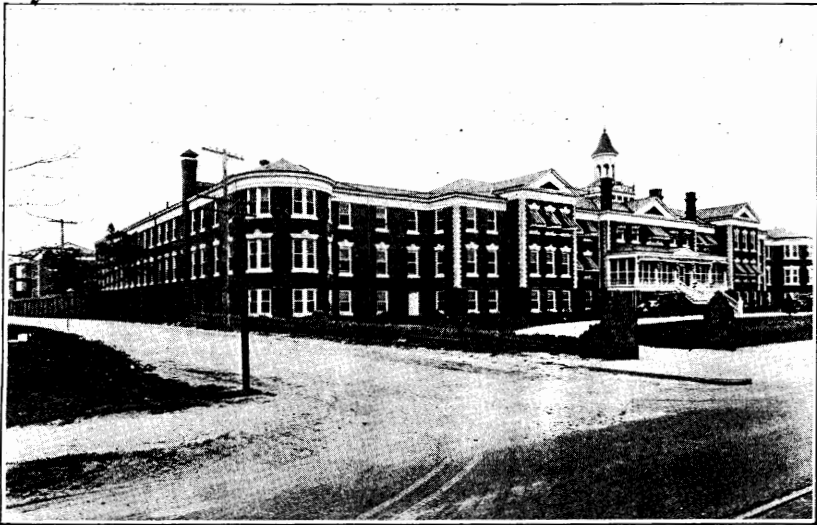
A number of cities have municipal isolation hospitals, a few have municipal general hospitals, and a few almshouses. A number of cities have municipal public welfare departments which in cooperation with other municipal departments, notably with the board of health, give public care through the overseer of the poor or the city almshouse to destitute families or individuals who are incapable of earning a living, or through a municipal employment bureau or clearing house to the unemployed; which provide for the temporary care of abandoned and neglected children or those held by the courts; which operate general or isolation hospitals or almshouses; which endeavor to insure wholesome recreation for both adults and children through the provision of parks and play grounds and through the supervision of commercialized amusements.

The active city welfare department functioning in the fields of health, education, safety and prevention provides efficient methods for rehabilitating the down and out, for preventing local dependency and delinquency, and for building up an atmosphere of community well being.

III. WELFARE WORK IN EACH COUNTY

Atlantic County

This county maintains at Pleasantville three well equipped institutions each with a resident physician in charge: a curative and treatment hospital for mental disease with a population of 200, a hospital for tuberculous patients with a population of 50, and a county home and hospital for the aged and indigent, the latter having an entire floor devoted to chronic cases and cases requiring nursing.



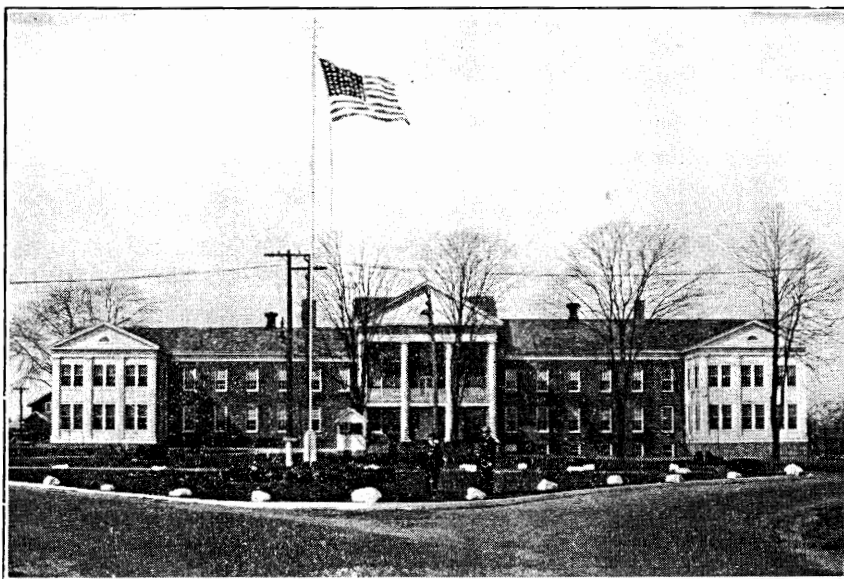
The Atlantic County Hospital for Mental Disease

Health programs of the county, including tuberculosis work and nursing and clinical service, seem to be the best organized in Atlantic City. A municipal hospital for contagious diseases is maintained. The Atlantic City Welfare Bureau, partially supported by city appropriations, carries on relief and other social work. The Needlework Guild, Catholic Relief work, ex-service work of the Red Cross, the American Legion, Veterans of Foreign Wars, and the Jewish Federation of Social Work are effective in the county and particularly in Atlantic City. Special classes for the mentally sub-normal are held in the public schools and vocational and continuation schools are established in this county as in many counties throughout the State.

Bergen County

At Oradell is located the well-constructed and modern county welfare unit, Bergen Pines, consisting of a tuberculosis hospital with a capacity of about 150, an isolation hospital, and the county welfare house for the aged.

The Bergen County Children's Home at Hackensack receives a county appropriation and follows modern methods of social work in carrying out its program, as a clearing house for problem children and for children dependent, neglected or otherwise handicapped.



The Bergen County Welfare House

The Bergen County Tuberculosis and Health Association is active. Private organizations and hospitals in the several communities cooperate with this health center of the county in the promotion of general health and clinical and nursing services. Englewood hospital, which serves a large portion of the county, is one of the best in the State. A mental hygiene clinic is conducted at the Hackensack General Hospital.

Such private agencies as the Y.M.C.A. and the Y.W.C.A. promote educational programs throughout the county. The schools have cooperated in this movement and have given especial attention to the foreign born.

Family relief programs are well organized in Hackensack, Englewood and Ridgewood, where also relief to ex-service men is carried

on by the American Legion and the Red Cross. Special education for the mentally handicapped is provided for in Hackensack and other large centers.

Burlington County

At New Lisbon are located the well built and equipped county hospital for mental disease with a resident population of 225, the tuberculosis hospital with about 100 beds, and the county almshouse, the infirmary wing of which is a modern building with hospital equipment, an operation room, and separate sections for cancer and contagious diseases.

The Burlington County General Hospital in Mount Holly, which in 1928 moved into a new building with a capacity of 100, is partially supported by an annual appropriation from the freeholders as is also the Burlington County Children's Home with its average population of 45 boys and girls.

The Burlington County Health Association and Tuberculosis League supports a general health program and maintains a preventorium for children during the summer.

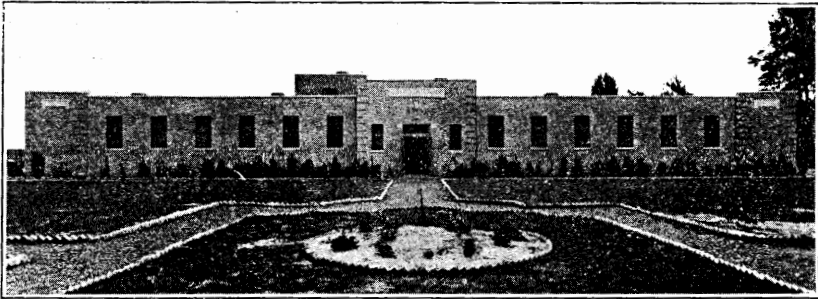
The Y.M.C.A. is the best organized of the county groups, reaching practically every community in the county through its several secretaries. It has functioned on a county basis since 1906. The Y. W. C. A. is also working on a county basis. The Church Mission of Help has made great strides in its case-work and the American Legion and its auxiliary carry on an active program.



Burlington County Hospital for Mental Diseases

Camden County

A remarkable unit of county institutions is located at Lakeland. The hospital for mental disease has a capacity of approximately 375 and the tuberculosis hospital a capacity of approximately 225. The latter has a preventorium and children's unit. Both institutions are well equipped and managed. The almshouse for the aged and indigent has a separate, newly constructed unit for its sick and infirm patients, with a staff of four graduate nurses. A workhouse, a branch of the



The Camden County Workhouse

county jail, is also located here. It is modern in every respect and a model for other counties. The county detention home with a capacity of 100 is housed in a modernly constructed building and receives juvenile delinquents under sixteen who are being detained for juvenile court or for other reasons.

Far-reaching and varied health programs are carried on by the County Tuberculosis League, the Visiting Nurse Association, the Red Cross, the Board of Health, the State Bureau of Child Hygiene, and the schools.

In the city of Camden there are excellent general hospital facilities with out-patient services (as Cooper and West Jersey Hospitals) and also a municipal hospital of 110 beds for contagious diseases. The city also maintains a department of outdoor relief.

Cape May County

This county's Home and Hospital for the Aged and Indigent is often referred to as a good model for a small county. Individual rooms are provided and the infirmary is housed in a bright one-story building attached to the main building.

Through the County Nurses' Office in the Cape May Court House, an effort is being made to centralize social welfare work.

The county's health program is cared for by the affiliation of the County Board of Freeholders, who make an appropriation toward

preventive and remedial health work, with the County Health Committee, the Red Cross, schools, nursing and other services.

Cumberland County

The County Hospital for Mental Disease with a population of about 180 and the County Almshouse are at Bridgeton.

The Cumberland County Public Health Association, with the Public Health Service Committee of Bridgeton and the Health Committee of the Woman's Club of Vineland, take the lead in promoting the good health program in the county. They work with the visiting nurse associations, the Child Hygiene Bureau of the State Department of Health, the State Tuberculosis League, and similar agencies.

Essex County

Essex County, with the largest population in the State, has at Overbrook a thoroughly modern curative hospital for mental diseases, with a capacity of more than two thousand. It is completely equipped to



Nurses' Recreation Hall at the Essex County Hospital for Mental Disease

give the patients the medical, surgical, dental, physiotherapy, hydrotherapy, occupational therapy, and other treatments that will bring about cures.

The County Sanatorium for Tuberculous Diseases at Verona has an average patient population of 275 persons who receive modern and effective medical care and treatment. The County Hospital for Contagious Diseases at Soho has a capacity of several hundred.

The probation service in connection with the Essex County Courts has an extensive program of rehabilitation for the adults and children placed under its supervision. The county juvenile clinic has made real progress in the understanding and treatment of juvenile offenders through its clinical research work. Youthful offenders are held temporarily in the County Parental Home.

The Essex County Tuberculosis Council has six branches covering different sections of the county and working with other health organizations in a preventive program.

Although most of the social work through the county has been initiated by private agencies, it is in general very thoroughly organized in certain cities. The Metcalf Memorial Building in Orange houses the Welfare Federation of the Oranges and is headquarters for many of the social agencies. Newark has a well-organized Council of Social Agencies, including a social service exchange. Montclair and the Oranges have similar organizations.

The Newark City Almshouse, built in 1916 on the modified cottage plan, is the only public almshouse in the county. A very active outdoor relief department is also maintained by the city. The Newark Public Schools have a Department of Child Guidance to assist in the application of mental hygiene and clinical and educational psychology in the public school education. Separate classes are conducted for the blind and crippled as well as for children who need other special training. The Essex County vocational and continuation schools are located at Newark.

Newark has a municipal general hospital of 700 beds and Irvington has a general hospital largely supported by the municipality.

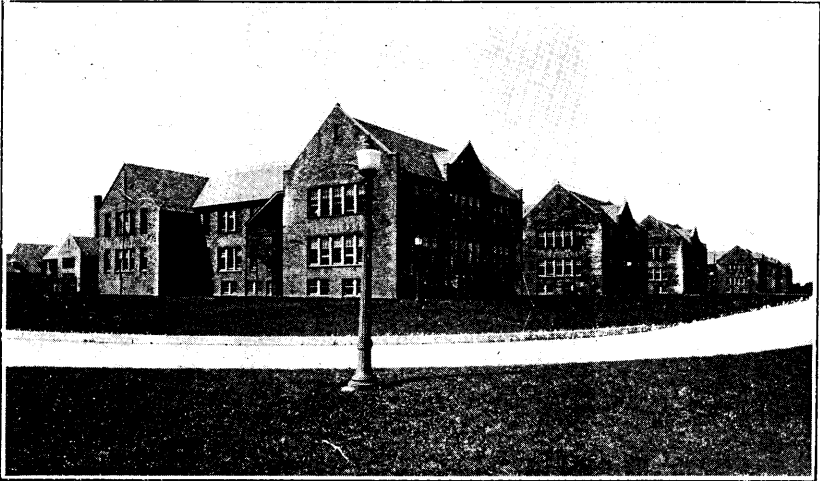
Gloucester County

This county's almshouse, located in Clarksboro, is beautifully situated and well conducted.

The Gloucester County Health Association and the Visiting Nurse Association are affiliated with the State Tuberculosis League and have been well organized for some time. The Department of Home Economics under the county farm agent has assumed the responsibility for a program of work with the foreign born, several private groups cooperating in this service. The Parent-Teacher Association is very active and well organized in the County Council. There is a separate strong council of colored women. The Y.M.C.A. is on a county basis and the Needlework Guild of America has been active over a long period of years.

Hudson County

At Secaucus are located the county institutions. The Hospital for Mental Disease, with an average population of 1100, has modern facil-



The Hudson County Hospital for Mental Disease

ities for treating disorders of the mind. The County Tuberculosis Sanatorium is one of the best in the State from every point of view and is splendidly staffed. Its clinics are famed for their effective work.

The well-equipped Hudson County Hospital is practically a county general hospital, caring for the indigent of the county, whether or not they are permanently indigent. In the almshouse proper are infirmary sections for those who do not need constant care. A smallpox hospital and a contagious disease hospital complete the unit at Secaucus.

The county probation work among juveniles and adults, carried on by a corps of officers, is effectively organized for preventive and rehabilitative welfare service. The County Parental Home works in conjunction with the juvenile court.

Because of the almost entirely urban character of this county, the social problems are those of concentrated city populations. Special educational programs for the foreign born are maintained by the public schools and several private character-building agencies in Jersey City, Hoboken, Bayonne, and other cities. Extensive programs for outdoor relief are maintained in Jersey City and Hoboken. In the Jersey City schools special provision is made for mentally deficient pupils, problem boys, and crippled children. A city hospital of 625 beds is maintained at Jersey City.

Hunterdon County

In Hunterdon County with its comparatively small population spread over a large area, social work has been local rather than county-wide.

The Public Health Association with headquarters at Lambertville and Flemington carries on an active nursing program in many communities throughout the county and one nurse gives county-wide service. The City Board of Education of Lambertville, the Women's Club, and the Red Cross have evinced particular interest in health work in certain sections of the county.

Mercer County

Near Trenton is located the Municipal Colony of institutions where complete classification is possible, since it provides a tuberculosis hospital (to which are sent the tuberculous patients from all of Mercer County), a home for the aged and infirm with facilities for hospitalization, a children's hospital for contagious diseases, an isolation hospital and a urology hospital.

The Mercer County Health League is very active in promoting the tuberculosis and general health work throughout the county. The Church Mission of Help is well organized.

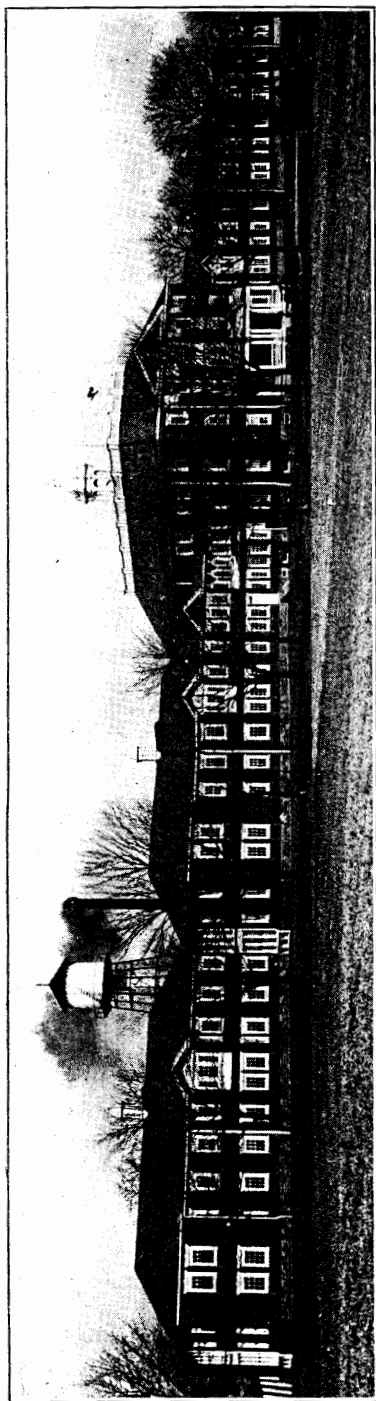
Princeton has a Social Service Bureau in charge of a trained social worker who is also the overseer of the poor. It has its own Anti-Tuberculosis Society working with the County Health League.

Trenton has a city department of outdoor relief and maintains city playgrounds in connection with its schools. The Y.M.C.A., the Y.W.C.A., the Y.M.H.A. and the Y.W.H.A. are especially active among the city organizations.

Middlesex County

The Middlesex County Tuberculosis League maintains an active program and has the cooperation of the Red Cross chapters, local Boards of Health, and similar organizations in general health work and in establishing clinics and nursing services through the county.

Through the cooperation of the overseers of the poor with the recognized case-working agencies, relief work attains a good standard in several communities. New Brunswick, Perth Amboy, and Stelton maintain their own almshouses. The two former support municipal isolation hospitals and Perth Amboy also has a municipal general hospital.



The Cumberland County Hospital for Mental Disease



The Municipal Colony of Institutions at Trenton

The city of New Brunswick, through the attendance department of its schools, does effective social work and in cooperation with the Woman's Club carries out a playground program. An extensive and practical social welfare program of relief and family service is carried on by the Home Service Section of the Red Cross. Educational and recreational work are promoted by the Boy Scouts and other private organizations. The Frances Parker Memorial Home for Incurables and the Middlesex and the St. Peter's General Hospitals are outstanding in their services.

Monmouth County

Monmouth County has made a distinct contribution to the New Jersey State-wide program of general public welfare under the statesmanlike leadership of the Monmouth County Organization for Social Service. Through it the county has been able to develop a unified program of social responsibility and has profited to an unusual degree from its knowledge of how to distribute the load of social care among State, county and local community agencies.

The forward looking program of the Monmouth County Organization for Social Service aims: to provide services that will give every child in Monmouth County the opportunity to grow up healthy in mind and body; to bring to Monmouth County the services of all State and national departments and organizations which will help promote the county's health program; to develop a policy of prevention so that there may be no loss to future citizenship.

To carry out this program, the Monmouth County Organization has taken the leadership in developing cooperation among all welfare organizations in the county, particularly among the schools and health agencies of all types. It has initiated and supported movements for supplying such services as that of a county school-attendance officer, a district health officer, a county advisory nurse, a visiting teacher, a public-school child-study division, special classes for poorly adjusted children, child-study groups, habit and health clinics, a county tuberculosis hospital, and a county-wide tuberculosis nursing service. It is responsible for the general promotion and extension of all types of health and recreational organizations. It had an important part in bringing about the enactment of the modern poor relief act of New Jersey in 1924.

The Board of Freeholders was the first in the State to appoint a board of managers for a welfare house under this law and initiated steps to provide such a home for the needy aged.

Since 1919 the Monmouth County Organization for Social Service has been the official county representative of the New Jersey State Department of Institutions and Agencies. It has achieved remarkable success in promoting cooperation among State and local health and welfare agencies for common social ends. It acts for the State Department of Institutions and Agencies as its parole representative for all parolees placed in the county from the reformatories and homes for juvenile delinquents, and also as its field representative for those who are either going to or returning from the hospital institutions of the State.

A mental hygiene clinic giving medical care and advice in psychiatry and psychology and serving in a preventive capacity for problem children is conducted twice a month at the office of the Monmouth County Organization for Social Service by the Psychiatric Clinic of



Office of the Monmouth County Organization for Social Work

the Trenton State Hospital, in cooperation with county public health nurses and local health units.

A number of individual organizations and agencies in the county are engaged in planning relief work and work with dependents or delinquents and are devoting their efforts to children's aid societies and day nurseries. Long Branch has a particularly good agency doing general relief work under trained leadership.

The county adjuster who is also the executive secretary of the Monmouth County Organization for Social Service performs all the routine duties of his county office from a social standpoint and in so doing is an invaluable asset to the board of freeholders. He aids the overseers of the poor in determining the legal settlement of the poor; he determines the indigency of county patients going to State and county institutions; he checks on the claims of private hospitals for reimbursement for the care of indigent patients; he advises with county officials in preparing budget appropriations for the institutions; he carries through a large percentage of prosecutions of crimes against children and works for the protection of children in the county; he visits at least once a year all wards of the county in the institutions of the State.

The county tuberculosis hospital, located at Allenwood, maintains high standards of medical and nursing service and provides for the patients home atmosphere and comfort. Standards of food and nourishment, household supplies, replacements and repairs, have all been checked against the developing policies of the New Jersey State Department of Institutions and Agencies and have been made to conform to this newer knowledge, and to professional and expert recommendations.

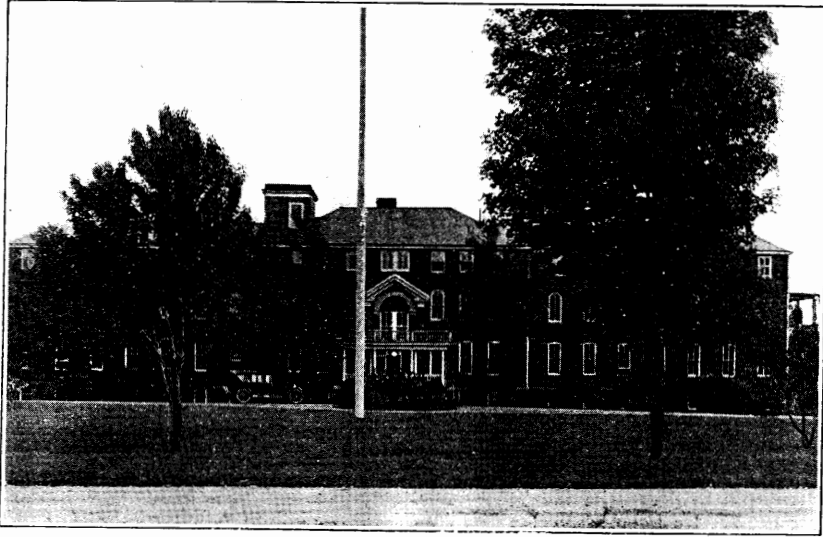
The Preventorium at Farmingdale, a private institution which accepts children of several counties, offers undernourished children who have been exposed to tuberculosis a chance to increase their physical resistance, through wise care and feeding, to a point where tuberculosis cannot get a foothold.



Farmingdale Preventorium

Morris County

At Morris Plains is located the Shongum Sanatorium for Tuberculous Diseases, with an average population of 50. The Welfare House, or Home for the Aged and Indigent, is also at Morris Plains. The care of the poor in the industrial centers and in the remote sections of the county is provided through the board of freeholders and the overseers of the poor.



The Morris County Welfare House

The Morris County Children's Home near Boonton is organized in accordance with modern methods of child care, with a trained social worker as the executive and with a field worker who is also trained for service in child care and placement.

The Central Bureau of Social Service in its office at Morristown combines the work of Family Welfare, the Society for Prevention of Cruelty to Children, and the Society for Prevention of Cruelty to Animals.

The Morris County Tuberculosis Association is merged with the Visiting Nurse Association operating under the same executive board and supervising nurse but on separate budgets appropriated by the community chest.

The social resources of Morristown are becoming well coordinated through the community chest and through the community spirit which pervades the work in that section of the State.

Ocean County

The Ocean County Health Association is well established and cooperates with the State Tuberculosis League in the prevention of tuberculosis. A splendid system of clinics, particularly for tuberculosis, has been promoted in the county, and the nursing services have progressed during the last few years. Such hospitals as the Paul Kimball General Hospital at Lakewood, the Mount Pleasant Hospital and other private institutions have done a great deal to raise the standards in medical service in this county.

The county agricultural agent and the home demonstration agent have promoted a constructive program throughout the county that has been helpful both in an educational and in a social way.

Most of the welfare work is done on a local rather than on a county-wide basis. Several service clubs have cooperated in welfare programs in the communities.

Passaic County

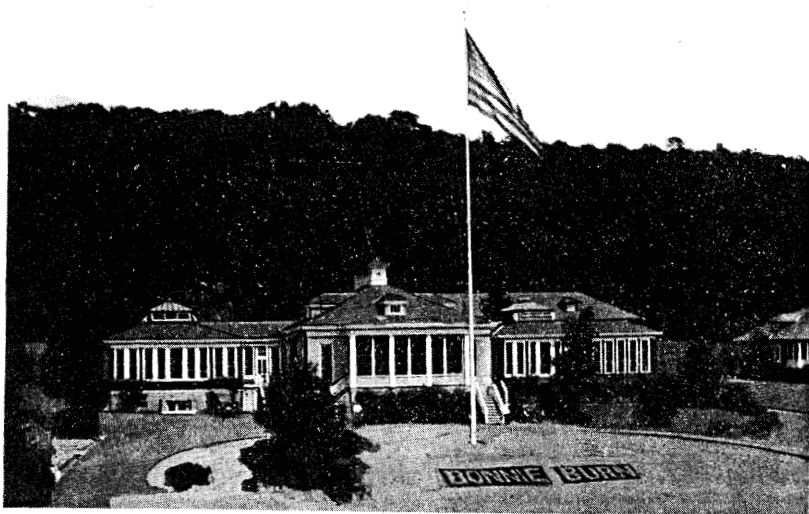
At Valley View, a splendid new county hospital to care for 150 tuberculous patients has recently been opened. The county cares for some of the mentally ill of the county in connection with the almshouse of the city of Paterson. The city of Passaic also has an almshouse. Both Paterson and Passaic have municipal isolation hospitals. Both cities have extensive programs of outdoor relief, and have made real progress in general social welfare work. The Red Cross is largely responsible for this work in Passaic and the Charity Organization Society in Paterson. Passaic also has a recreational program supervised by trained workers. Passaic and Clifton have welfare commissions.

This county's general health program is widely known throughout the State through the health and nursing services promoted by the County Tuberculosis League, the Visiting Nurse Association, and the schools boards.

Salem County

The County Home for the Aged and Indigent is located in Pilesgrove Township.

The Salem County Memorial Hospital at Salem, supported by county, city, and private funds is giving excellent service. Tuberculosis, dental, baby, and other clinics are held here and children's clinics through some of the schools. The latter are recognizing their responsibility in the field of social work as indicated by the inauguration of a Binet class and other special classes in some of the schools. The Salem County Health Association and Child Welfare Committee have done commendable work. Social investigations are carried on to some extent by the nurses of this association.



Administration Building of the Union County Tuberculosis Sanatorium



Baby Cottage of the Union County Tuberculosis Sanatorium

Somerset County

The County Health Association, which is affiliated with the State Tuberculosis League, promotes an outstanding health program through the county. The Somerset General Hospital at Somerville is outstanding for its methods and accomplishments. Here is held a State mental health clinic in cooperation with local authorities. The Community Welfare Society of Bound Brook undertakes relief and family welfare service in the community. The Y.M.C.A. operates a county-wide program.

Sussex County

Between Newton and Branchville is the County Farm and Almshouse, which has recently been remodeled and improved.

The County Tuberculosis League deserves especial mention for its fine work in connection with the clinics at Franklin, Ogdensburg, Newton and elsewhere. The Church Mission of Help maintains a high standard of case work. The county farm agent is successful in developing boy's club work and in creating interest in better rural life as well as in better farming. The Y.M.C.A., Boy Scouts, and similar groups are organized for county work. County nurses visit the sixty-one schools in the county outside of Newton, which has its own school nurses supported by the township Board of Education.

The town of Franklin is noted for its Community House and for the unique social program carried on by the large zinc company there.

Union County

At Scotch Plains, Bonnie Burn, the tuberculosis sanatorium of the county, cares for 275 patients. The County Tuberculosis League is very active.

School nurses throughout the county give well-organized services in schools, clinics, and health centers. Unusual hospital facilities are found in the county.

The welfare work of the county is centered in the individual cities. Elizabeth maintains a municipal isolation hospital. The Visiting Nurse Association here is considered one of the best in the State. The Family Welfare Society organizes social relief and functions as the Society for the Prevention of Cruelty to Children. The work of the Hebrew Societies is actively organized. A community chest at Plainfield has promoted the coordination of social programs there.

Warren County

The County Almshouse is located at Oxford. The Warren County Health Association is largely responsible for the establishment of a general health program in the county. The county and the town of Phillipsburg contribute to the support of the general hospital of 65 beds at Phillipsburg. Phillipsburg has a community chest in which participate the Red Cross, Boy Scouts, Community Welfare Service, and the Warren hospital. The Red Cross unit maintains through its home service section an extensive program of relief and family case-work.

IV. STATE WELFARE WORK

The Department of Institutions and Agencies

In 1918 the Department of Institutions and Agencies was established as a public welfare department in the State to coordinate the activities of both the hospital and correctional types of institutions.

A non-partisan State Board of Control of eight members, one appointed each year by the Governor, with the consent of the Senate, directs the work of this welfare department. To it are responsible the boards of managers of the individual institutions and agencies who are appointed by the State Board subject to the Governor's approval.

The law provides that "the State Board shall have power to determine all matters relating to the unified and continuous development of all institutions and non-institutional agencies within its jurisdiction; shall determine all matters of policy and have power to regulate the administration of any of the institutions and non-institutional agencies within its jurisdiction, correct and adjust the same so that each institution and agency shall perform its proper function as an integral part of a general system."

In its work with both delinquent and defective State wards, the Department has emphasized the importance of treatment, training, and wherever possible, social rehabilitation instead of mere custody. It has cooperated with counties and municipalities in stressing the prevention of delinquency, the early diagnosis and treatment of mental disease and tuberculosis and the effective training and control of the feeble-minded. It is the belief of the State that it is more economical to keep people out of institutions than to put them in, pay the cost of their maintenance, and possibly support their dependents during their institutional life. When institutionalization is necessary, every effort is made to preserve the self respect, develop the earning capacity, and rebuild the character of the State wards.

The Establishment of the State Institutions

The State of New Jersey has long realized its responsibility toward the dependents and delinquents and has ever sought to meet that responsibility. As early as 1848 it took over the care of the insane, then maintained in local jails, by erecting the Trenton State Hospital for Mental Disease. In 1876, the State Hospital at Greystone Park was opened.

Gradually other types of institutions were erected as there developed a consciousness on the part of the State of the needs of the citizens. In 1888 the State Institution for the Feeble-Minded was established, to

be followed in later years by the other institutions for the feeble-minded, the Colony at New Lisbon in 1914, the Colony at Woodbine in 1921, and the North Jersey Training School at Totowa in 1928.

In 1898 there was opened the State Village for Epileptics, one of the few specialized institutions of its kind in the country. The State Sanatorium for Tuberculous Diseases was established in 1907.

At the time of the Civil War, the Home for Disabled Soldiers at Kearny was opened to care for the veterans of the State. In 1900, after the Spanish War, the Soldiers' Home at Vineland was opened to give refuge to the increasing number of veterans who were becoming aged and to care for the soldiers' wives and widows who could not be admitted to Kearny.

The penal and correctional institutions of the State rightfully belong to the welfare group since they are not custodial in character, but give the offender care and training to make him a good citizen upon his release to the community. This is particularly true of the State Home for Boys at Jamesburg, established in 1865, and the State Home for Girls at Trenton, established in 1871, which aim to lead the youthful offenders into the paths of useful citizenship. The same thing holds true of the older group at the reformatories for males at Rahway (1901) and Annandale (1929) and for women at Clinton (1913).

The State Prison at Trenton was opened in 1798 to receive certain penal offenders who up to that time had been confined in county jails, for the most part inadequate for the needs.

The Wards of the State

The resident population of the State institutions of the Department of Institutions and Agencies is more than thirteen thousand. Three thousand additional persons are living in the communities under the supervision of parole officers after having served partial terms in the penal and correctional institutions. Eight hundred persons are receiving care by the Department while on trial visit or parole from hospitals for mental disease or institutions for the feeble-minded. The State Board of Children's Guardians, an agency of the Department, is supervising and caring for seventeen thousand children, the expenses of these children being paid by the counties and municipalities. Two thousand persons are contacted in one way or another by the State Commission for the Blind. Over five thousand persons in county or private institutions are receiving State support.

Mental Hospitals

The policy of the State hospitals for mental disease at Greystone Park and at Trenton has been to provide treatment rather than custodial care for the purpose of restoring as large a number of patients

as possible to safe and productive life in the community. To that end, each patient is given a comprehensive physical examination, including an X-ray of the teeth, laboratory study of the blood chemistry, and examination of the eyes, ears, nose and throat by a specialist, followed by specific treatment for any abnormalities discovered. The mental examination is equally thorough and is participated in by the entire medical staff. The therapeutic measures prescribed take into consideration both the physical and the mental condition, and include a variety of baths, packs, electrical treatments, special diets and medication, with supervised physical exercise, amusements and an extensive system of occupational therapy.

When the patient is considered sufficiently improved to warrant a trial visit home, the psychiatric social service division investigates the surroundings, advises the family as to methods for promoting the best interests of the patient, assists in procuring work, and then supervises the patient for one year after which he is discharged from the hospital records if he has found his place in the community and has shown no return of his symptoms.

In addition to the treatment of patients in the hospitals, and to the after-care when they are allowed to return to the community, the hospitals have developed a system of mental hygiene clinics at which persons with nervous and mental disorders may receive advice and treatment at an early stage of their difficulties and thus make more certain a complete cure and prevent further development of the disease which would make hospitalization necessary at the expense of the individuals and of the State.

Plans are now under way for the erection of a third State mental hospital at Hilldale in Monmouth County.

Institutions for the Feeble-Minded and Epileptic

Arrested mental development from birth or from a very early age is commonly called feeble-mindedness, or more accurately, mental deficiency. While actual mental deficiency cannot be cured, much can be done through specialized instruction and proper habit formation to make the child better able to take care of himself and in many cases to become more or less self-supporting in later life.

With this end in view, the State Institution for Feeble-Minded (girls and women) at Vineland, established a special school department where the children get the practical and academic training that they are capable of absorbing. Through the industrial department the women make sheets, pillow cases, pillows, knitted goods, underwear and stockings. Work on the farm is done by the inmates, who also do the domestic work of the institution as far as possible.

A colony has been established at Red Bank where about forty

girls are housed in two adjoining homes under supervision. These girls do domestic work in private homes at Red Bank and return to the colony in the evening for recreation and rest. The colony is largely self-supporting.

At the State Colony for Feeble-Minded Males, New Lisbon, the training and industrial activities include farm and dairy work, clearing the land, canning, baking, reed furniture manufacture, basket weaving, musical training in band work, and school training in the lower school grades. It is planned to establish colonies from this institution to develop farming activities.

The State Colony for Feeble-Minded Males at Woodbine, for boys and men with minds like children less than three years old, emphasizes habit training. The ability of each patient is continually checked so that his attempt to make progress may be recorded.

The North Jersey Training School at Totowa, opened in 1928, is built on the cottage plan which permits proper classification and grouping of the high grade feeble-minded girls for the development of home life and vocational training leading to whole or partial self support.

The Training School at Vineland should be mentioned in connection with the State institutions for the feeble-minded. Although a private institution, sixty-five per cent to seventy per cent of the pupils are State wards placed there for special training and paid for by the counties or by the State, according to legal settlement, as in other institutions. Its reputation is international, partly because of the unsurpassed care and training given the pupils and partly because of the valuable contributions to the study of feeble-mindedness which originate in its research laboratory and are disseminated through the extension department.

A unique institution in New Jersey is the State Village for Epileptics at Skillman, where every new discovery in the treatment and care of epileptics is put to use. Occupational and recreational activities are utilized to the fullest possible extent. The school department is very active.

The Tuberculous

The New Jersey Sanatorium for Tuberculous Diseases at Glen Gardner is regarded as a model institution. It combines medical treatment and education, gives practical demonstration of the modern methods of treating tuberculosis, and at the same time extends the direct benefits of its system to the people at large. Its purpose is to render the patient self-sustaining.

The Sanatorium has established an extension department organized as a diagnostic clinic to furnish assistance in the more rural sections and in other places requiring trained specialists in tuberculosis. Scheduled clinics are held regularly in forty communities in addition to several "roaming" clinics held in several large areas.



Essex Mountain
Tuberculosis Sanatorium

Camden County
Tuberculosis
Sanatorium from
the Air



Play Hour at the State Village for Epileptics

To relieve the monotony of sanatorium existence a building housing the department of diversional and therapeutic occupations has been erected. The new treatment unit for 114 children over five years of age is a most important forward step in the preventive health program.

Rehabilitation—A State Policy in Penal and Correctional Institutions

It is the policy of all the penal and correctional institutions to do all in their power to rehabilitate persons committed to their care, in order that they may not be a menace to the community when they are later discharged from these institutions.

In accordance with this policy, each inmate upon admission is studied by specialists from the following points of view: medical, psychological, psychiatric, educational and industrial, social history and background in order that a plan of training and employment may be worked out in preparation for return to the community. Whenever an inmate is eligible to be considered for parole he is again passed upon by the same group of specialists who make recommendations to the Board of Managers considering his release.

All persons paroled from the State Home for Boys, the State Home for Girls, the New Jersey Reformatories at Rahway and Annandale and Clinton are under the supervision of the Central Parole Bureau of the Department of Institutions and Agencies. Employment is secured for parolees by the parole officers and all possible assistance given them in order that they may reestablish themselves in the community and become good citizens.

Penal and Correctional Institutions

The New Jersey State Prison at Trenton is a congregate cell block type of structure, portions of the building being over a hundred years old. In order to rehabilitate the men, training is given in the English language and in such other subjects as will be of most benefit to them. Among the products manufactured under the State Use system may be listed: shoes for men and women, kitchen utensils, sheet metal work, clothing, tools, dies, automobile tags, wood furniture, and concrete blocks and posts. Additional industries include painting, printing, book-binding (catalogs and books for the State Library) baking, and coffee roasting. From one hundred to one hundred twenty-five men build concrete roads in cooperation with the State Highway Commission. Smaller groups are sent to the several other institutions for general laboring, excavating, and similar jobs.

At the Prison Farm of 1,200 acres at Leesburg, Cumberland County, men do farming, canning, dairying and stock raising.

The New Jersey Reformatory for Women at Clinton is one of the most successful institutions for women in this country as measured

by the stability of the women on parole. It is of the cottage type of construction and is not surrounded by wall or stockade. The main industries include farm work, laundry, cleaning and general housework, cooking, sewing and infant care.

The New Jersey Reformatory at Rahway provides a place where young men who have been guilty of an offense for which they could be sent to the State Prison, may be separated from older offenders so that the opportunity for them to reform may be made as great as possible. The institution is a congregate cell block, prison type institution, surrounded by a wall. Training, under the State Use System, is given in the following trades: plumbing, masonry, printing, shoe manufacture, tailoring, carpentry, machinery, tool-making, blacksmithing, foundry work, painting, musical training through band work, barbering, sheet metal work, and metal bed manufacturing and electrical wiring.

The new reformatory at Annandale is a farm type of institution built entirely by inmate labor under the supervision of skilled mechanics. Young men who have committed minor offenses are sent to this institution and are given vocational training to bring about social and economic rehabilitation.

The State Home for Boys at Jamesburg is of the cottage type of construction and harbors delinquent boys. On the basis of an intensive study made of each boy on admission, the plan of training thought best adapted to his rehabilitation and preparation for citizenship is mapped out. This training program is rather wide, covering carefully organized efforts at moral and spiritual training by chaplains and workers in the several religious denominations; home and Boy Scout training secured in the cottage where the boy lives with a "family" of thirty to fifty other boys of his age under the direction of a man and wife who are known as the cottage "father" and "mother"; school training secured in an academic school for boys who learn best from books or in a school of manual education for boys who learn best from doing things; trade training for older boys of adequate ability; and industrial training for those of lesser ability. Facilities and opportunities in some twenty-four different vocations are thus provided.

The State Home for Girls at Trenton is also of the cottage type. The training of the girls consists of cooking, general housework, sewing, academic training, typing, stenography, laundry work, power sewing (factory type), infant care and personal hygiene. The object of the training is to fit the girls to return to society and to make a satisfactory adjustment in community life.

State Board of Children's Guardians

The State Board of Children's Guardians is responsible for the "care and supervision over all indigent, helpless, dependent, aban-

done, friendless and poor children who may now be or who may hereafter be in charge, custody and control of any county asylum, county home, almshouse, charitable, hospital, relief or training institution, home or family to which such children may be or may have been committed."

Such children are committed through the local overseer of the poor or the county adjuster to the State Board of Children's Guardians by the court of the county in which they have legal settlement. The support of the children is financed by the municipality or county, and the State Board administers the financial aid and actively supervises the children that they may be properly cared for, fed, clothed, and educated, and that they may receive the necessary religious instruction.

Seventeen thousand children are under the care of the Board. Nine thousand of these children, representing over thirty-three hundred families, are receiving aid through the act to promote home life for dependent children, commonly known as the Widows' Pension Act. Through this act, a widow may receive for children under sixteen years of age not more than \$16 per month for the first child or more than \$14 for the second child or more than \$12 for all other children.

Eight thousand dependent or neglected children are living under the care of the Dependent Children's Department of the Board in free or boarding homes. Forty-three per cent of these are boarded with their mothers or other relatives. Twenty-nine per cent are boarded in other families and twenty-eight per cent are living in free homes with foster parents.

A rate of \$3.50 is paid for the weekly board of each child whether the child be boarded with strangers or relatives. The Board of Children's Guardians furnishes clothing for each child and pays all dentist, doctor, and special bills. Board is furnished for as many children in the family as is necessary, some children receiving supervision and clothing when other financial aid is unnecessary.

The Blind

Effort is made to keep in touch with the needs of all blind persons in the State, to provide training for certain pupils in schools for the blind, and to provide training in their own homes and communities for such persons as can profit by such training, in order that they may become self-supporting in so far as possible.

Additional State Welfare Departments and Commissions

The State Commission for the Care of Crippled Children was created by the Legislature to make inquiries into the number and condition of crippled children in the State and existing facilities and legal provisions for promoting the care, treatment, education and general welfare of such children.

The State Commission for the Rehabilitation of Physically Handicapped Persons, composed of the Commissioner of Education, the Commissioner of Labor, the Commissioner of the Department of Institutions and Agencies and five others appointed by the Governor, directs the rehabilitation of physically handicapped persons in the State, especially through the clinics at Atlantic City, Camden, Jersey City, Newark, Paterson, and Trenton.

The State Department of Labor administers laws regulating working hours and conditions. It administers the Workmen's Compensation Act and maintains employment bureaus at Atlantic City, Camden, Jersey City, Newark, Paterson and Trenton.

The State Department of Education maintains continuation, vocational, evening and special industrial schools in connection with the public school system. The New Jersey School for the Deaf at Trenton, a boarding school for the deaf of the State between the ages of six and twenty-one, is under the supervision of the State Board of Education and is a part of the public school system as is also the Manual Training and Industrial School for Colored Youth at Bordentown.

V. DIRECTORY OF PUBLIC INSTITUTIONS

State Institutions and Agencies and Their Location

Type and Name of Institution	Location	Superintendent
DEPARTMENT OF INSTITUTIONS AND AGENCIES		
	State House, Trenton	Dr. William J. Ellis Commissioner
MENTALLY ILL (INSANE)		
1. State Hospital	Greystone Park	Dr. Marcus A. Curry
2. State Hospital	Trenton	Dr. Henry A. Cotton Medical Director Samuel T. Atchley, Warden
MENTALLY DEFECTIVE (FEEBLE-MINDED)		
3. State Institution for Feeble-Minded (Females)	Vineland	George B. Thorn
4. State Colony for Feeble-Minded Males	New Lisbon	Dr. C. T. Jones
5. State Colony for Feeble-Minded Males	Woodbine	John A. Tinsley
6. North Jersey Training School (Females)	Totowa	A. H. Meese
EPILEPTICS		
7. State Village for Epileptics	Skillman	Dr. Dan S. Renner
TUBERCULOUS		
8. Sanatorium for Tuberculous Diseases	Glen Gardner	Dr. Samuel B. English
STATE PRISONERS		
9. New Jersey State Prison	Trenton	Timothy J. Murphy
10. Prison Farm of the State Prison	Leesburg	Col. Edward B. Stone
REFORMATORIES		
11. New Jersey Reformatory (Males)	Rahway	Maj. M. O. Kimberling
12. New Jersey Reformatory (Males)	Annandale	A. R. Archer Acting Superintendent
13. New Jersey Reformatory for Women	Clinton	Miss Edna Mahan
JUVENILE DELINQUENTS		
14. New Jersey State Home for Boys	Jamesburg	Calvin Derrick
15. New Jersey State Home for Girls	Trenton	Dr. Ellen C. Potter
SOLDIERS' HOMES		
16. Home for Disabled Soldiers	Kearny	Mrs. Lydia E. Gasser
17. New Jersey Memorial Home for Disabled Soldiers, Marines, Sailors and Their Wives and Widows	Vineland	Barton T. Fell
STATE AGENCIES		
State Board of Children's Guardians	Jersey City	Miss Frances Dav
New Jersey Commission for the Blind	Newark	Miss Lydia Y. Hayes

County and Municipal Public Welfare and Institutional Directory

Atlantic County

County Mental Disease Hospital, Pleasantville.....Dr. Edward Guion, Sup't
County Tuberculosis Sanatorium, Pleasantville....Dr. Clyde M. Fish, Med. Dir.
County Almshouse, Pleasantville.....Dr. Edward H. Coward, Sup't
Atlantic City Isolation Hospital.....W. R. Brady
Director Board of Freeholders.....F. Fraley Doughty
County Adjuster.....Henry S. Scull, Atlantic City
County Physician.....Dr. Lewis R. Souder

Bergen County

County Tuberculosis Sanatorium, Oradell.....Dr. J. R. Morrow, Sup't
County Isolation Hospital, Oradell.....Dr. J. R. Morrow, Sup't
County Welfare House, Oradell.....Thomas Kline, Steward
Children's Home, Hackensack.....Mrs. Mildred Fisher, Dir. Social Service
Director Board of Freeholders.....Benjamin Dansen, Jr.
County Adjuster.....Horace F. Banta, Hackensack
County Physician.....Dr. Joseph Payne

Burlington County

County Mental Disease Hospital, New Lisbon.....Robert W. Cox, Sup't
County Tuberculosis Sanatorium, New Lisbon.....Dr. M. W. Newcomb, Sup't
County Almshouse, New Lisbon.....Henry I. Worrell, Sup't
Director Board of Freeholders.....Howard Russ
County Adjuster.....Howard C. Stackhouse, Mt. Holly
County Physician.....Dr. Daniel F. Remer

Camden County

County Mental Disease Hospital, Grenloch.....Myrtle F. Hess, Sup't
County Tuberculosis Sanatorium, Grenloch.....Dr. Martin H. Collier, Sup't
County Farm, Grenloch.....Herbert D. Hilbert, Sup't
County Detention Home, Pensauken.....Grace M. Anthony, Sup't
Camden Isolation Hospital.....Dr. Lovett
Director Board of Freeholders.....Leslie H. Ewing
County Adjuster.....Edward R. Deibert, Camden
County Physician.....Dr. Edward B. Rogers

Cape May County

County Almshouse, Cape May Court House.....Sallie Douglass, Sup't
Director Board of Freeholders.....Luther C. Ogden
County Adjuster.....A. Carlton Hildreth, Cape May Court House
County Physician.....Dr. Julius Way

Cumberland County

County Mental Disease Hospital, Bridgeton.....Charles C. Stremmey, Sup't
County Almshouse, Bridgeton.....Charles Ware, Steward
Director Board of Freeholders.....Sheppard Campbell
County Adjuster.....Roscoe C. Ward, Bridgeton
County Physician.....Dr. H. G. Miller

Essex County

County Mental Disease Hospital, Cedar Grove.....Dr. Guy Payne, Sup't
County Tuberculosis Sanatorium, Verona.....Dr. Byron M. Harman, Sup't
County Hospital for Contagious Diseases, Soho.....Dr. Ellis L. Smith
County House of Detention, Newark.....John L. Burgess, Sup't
County Parental Home, Newark.....Dr. Ruth Hilliard, Matron
Newark City Almshouse.....Patrick White
Newark City Hospital.....Dr. Earl Snavelly
Irvington General Hospital.....Isabel Bennet, Sup't
Director Board of Freeholders.....Henry C. Hines
County Adjuster.....Raymond Mahoney, Newark
Chief Medical Examiner.....Dr. Harrison S. Martland

Gloucester County

County Almshouse, Clarksboro.....A. J. Nichol, Steward
Director Board of Freeholders.....E. Arlington Jones
County Adjuster.....R. Edward Klaisz, Woodbury
County Physician.....Dr. H. H. Clark

Hudson County

County Mental Disease Hospital, Secaucus.....Dr. George W. King, Sup't
County Tuberculosis Sanatorium, Secaucus.....Dr. B. S. Pollak, Sup't
County Smallpox Hospital, Secaucus.....Louis Piser, Sup't
County Contagious Disease Hospital, Secaucus.....Percy A. Hopkins, Sup't
County General Hospital, Secaucus.....Dr. W. J. Monaghan, Sup't
County Almshouse, Secaucus.....James J. McCue
Jersey City General Hospital.....Dr. George O'Hanlon, Sup't
Director Board of Freeholders.....Hugh Parle
County Adjuster.....Dr. Arthur P. Hasking, Jersey City
County Physician.....Dr. Bert Daly

Hunterdon County

Director Board of Freeholders.....Fred Massey
County Adjuster.....H. L. Stout, Flemington

Mercer County

County Workhouse, Moores Station.....J. S. Karlberg, Warden
Municipal Colony, Trenton.....Dr. L. H. Rogers, Medical Sup't
Director Board of Freeholders.....George H. Barlow
County Adjuster.....Frederick C. Beans, Trenton
County Physician.....Dr. Charles H. Mitchell

Middlesex County

New Brunswick Almshouse.....John E. Breece, Sup't
Perth Amboy Almshouse.....Theresa Ulozas
Stelton Almshouse.....William P. Waldron
Perth Amboy City Hospital.....Sarah VanGelder, Sup't
Perth Amboy Isolation Hospital.....Dr. W. H. Thompson, Health Officer
New Brunswick Isolation Hospital.....Dr. E. I. Cronk, Health Officer
Director Board of Freeholders.....William S. Dey
County Adjuster.....Charles MacWilliam, New Brunswick
County Physician.....Dr. John L. Suydam

Monmouth County

County Tuberculosis Sanatorium, Allenwood.....Elizabeth Hynes, R. N., Sup't
Director Board of Freeholders.....Bryant B. Newcomb
County Adjuster.....John L. Montgomery, Red Bank
County Physician.....Dr. Harvey W. Hartman

Morris County

County Tuberculosis Hospital, Morris Plains.....Winifred F. Smith, Sup't
County Welfare House, Morris Plains.....Lewis Dufford, Steward
Director Board of Freeholders.....Fletcher R. Fritts
County Adjuster.....Robert L. Murphy, Morristown
County Physician.....Dr. M. Kemper Willoughby

Ocean County

Director Board of Freeholders.....U. S. Grant
County Adjuster.....W. H. Jayne, Toms River
County Physician.....Dr. E. C. Disbrow

Passaic County

County Tuberculosis Hospital, Valley View.....Dr. R. M. Shepard, Sup't
Passaic Isolation Hospital.....John N. Ryan, Health Officer
Paterson Isolation Hospital.....P. J. Croughan
Passaic City Almshouse.....Alexander Purcell
Paterson City Almshouse.....John G. Donnelly, Sup't
Director Board of Freeholders.....Robert Worsley
County Adjuster.....Joseph Green, Paterson
County Physician.....Dr. William A. Norval

Salem County

County Almshouse, Woodstown.....J. M. Newell, Sup't
Director Board of Freeholders.....Charles R. Hires
County Adjuster.....William T. Gallaway, Salem
County Physician.....Dr. R. M. A. Davis

Somerset County

Director Board of Freeholders.....Frank W. Remsen
County Adjuster.....Carlton T. Cranmer, Somerville
County Physician.....Dr. George L. Mack

Sussex County

County Farm and Almshouse, Branchville.....Edwin Yetter, Steward
Director Board of Freeholders.....Theodore M. Roe
County Adjuster.....Arthur L. Wilcox, Newton

Union County

County Tuberculosis Sanatorium, Scotch Plains....Dr. John E. Runnels, Sup't
Elizabeth Isolation Hospital.....Mary O'Neil
Director Board of Freeholders.....Peter H. Meisel
County Adjuster.....Francis J. Blatz, Plainfield
County Physician.....Dr. Christopher A. Brokaw

Warren County

County Almshouse, Oxford.....George Whitesell, Steward
Director Board of Freeholders.....Charles G. Smith
County Adjuster.....Samuel T. Beatty, Blairstown
County Physician.....Dr. G. W. Cummins