

The New Jersey Department of Education (NJDOE) is pleased to present these annual reports of School Performance. These reports are designed to inform parents, educators and communities about how well a school is performing and preparing its students for college and careers.

In particular, the School Performance Reports seek to:

- **Focus** attention on metrics that are indicative of college and career readiness.
- **Benchmark** a school's performance against other peer schools that are educating similar students, against statewide outcomes, and against state targets to illuminate and build upon a school's strengths and identify areas for improvement.
- **Improve** educational outcomes for students by providing both longitudinal and growth data so that progress can be measured as part of an individual school's efforts to engage in continuous improvement.

While the New Jersey School Performance Reports seek to bring more information to educators and stakeholders about the performance of schools, they do not seek to distill the performance of schools into a single metric, a single score, or a simplified conclusion. Instead, the intention is that educators and stakeholders will engage in deep, lengthy conversations about the full range of the data presented. As educators know well, measuring school performance is both an art and a science. While the School Performance Report brings attention to important student outcomes, NJDOE does not collect data about other essential elements of a school, such as the provision of opportunities to participate and excel in extracurricular activities; the development of non-cognitive skills like time management and perseverance; the pervasiveness of a positive school culture or climate; or the attainment of other employability and technical skills, as many of these data are beyond both the capacity and resources of schools to measure and collect well.

To learn more about New Jersey's school accountability system, please visit: <http://www.nj.gov/education/educators/>.

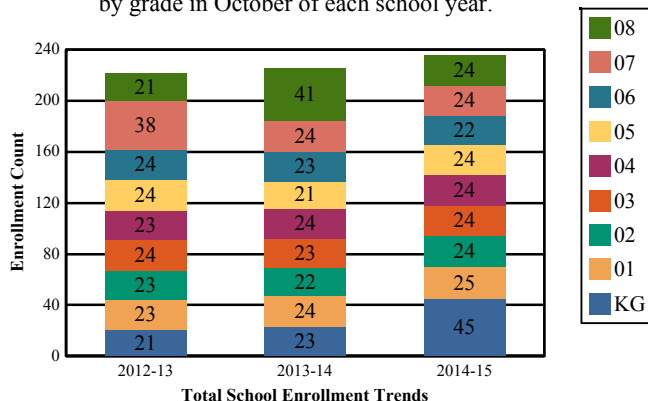
## DEMOGRAPHIC INFORMATION

CHARTERS  
SOARING HEIGHTS CS

GRADE SPAN KG-08

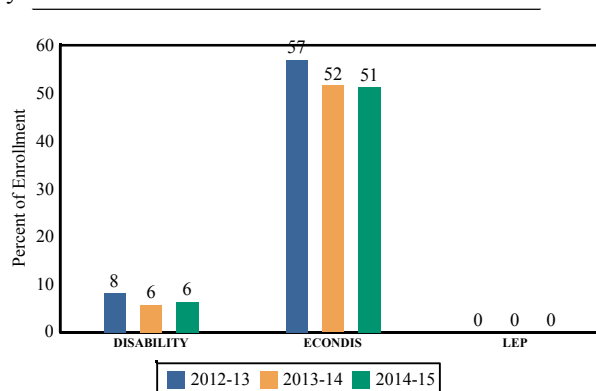
### Enrollment by Grade

This graph presents the count of students who were 'on roll' by grade in October of each school year.



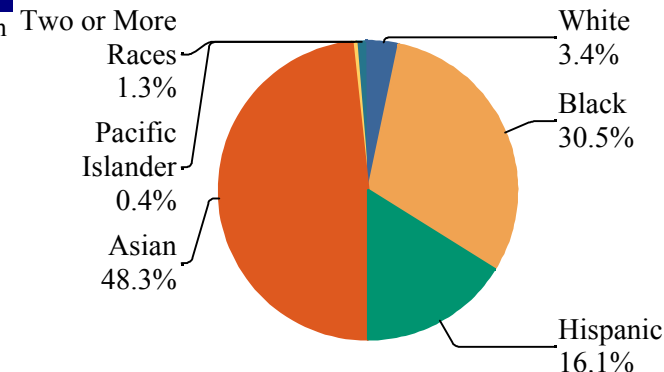
### Enrollment Trends by Program Participation

This graph presents the percentages of students by program participation who were 'on roll' in October of each school year.



### Enrollment by Ethnic/Racial Subgroup

This graph presents the percentages of enrollment for each subgroup defined by the No Child Left Behind Act of 2001.



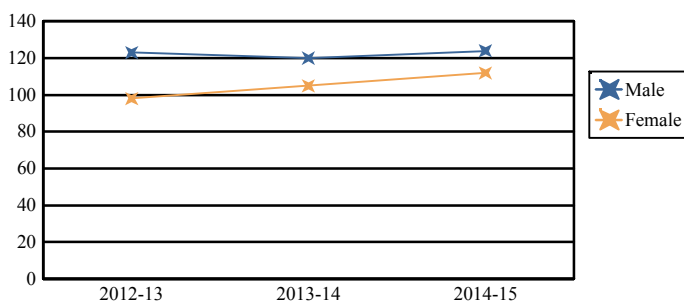
Note: "UG" represents the count of students who are 'on roll' in this school but who are educated in ungraded classrooms, meaning that the classrooms may contain students from multiple grade levels.

### Total School Enrollment

2012-13	221
2013-14	225
2014-15	236

### Enrollment by Gender

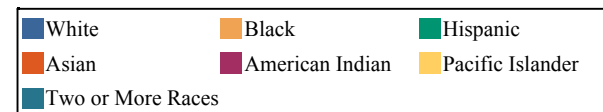
This graph presents the count of students by gender who were 'on roll' in October of each school year.



	Male	Female
2012-13	123	98
2013-14	120	105
2014-15	124	112

### Current Year Enrollment by Program Participation

2014-15	Count of Students	% of Enrollment
Students with Disability	15	6%
Economically Disadvantaged Students	121	51.3%
English Language Learners	0	0.0%



### Language Diversity

This table presents the percentage of students who primarily speak each language in their home.

2014-15	Percent
English	79.0%
Tagalog	6.9%
Spanish	5.2%
Punjabi	2.6%
Vietnamese	2.2%
Chinese	1.3%
Other	3.0%

**ACADEMIC ACHIEVEMENT**

**CHARTERS**

**SOARING HEIGHTS CS**

**GRADE SPAN KG-08**

The Academic Achievement section measures the content knowledge that students have in English Language Arts/Literacy (ELA/L) and Math as demonstrated in the 2014-2015 *Partnership for Assessment of Readiness for College and Careers* (PARCC) assessments. The below chart consist of three columns. The first column - Schoolwide Performance - includes the percentage of students in ELA/L and Math who met or exceeded grade level expectations. The middle column - Peer School Percentile - indicates how the school's outcomes compared to its peers. The last column - Statewide Percentile - indicates how the school's outcomes compared to schools across the state.

Academic Achievement Indicators	Schoolwide Performance	Peer Percentile	State Percentile
English Language Arts/Literacy Met or Exceeded Expectation	<b>69%</b>	<b>100</b>	<b>83</b>
Math Met or Exceeded Expectation	<b>60%</b>		

**ESEA Waiver - English Language Arts/Literacy**

This table presents, for each subgroup in the school, the total number of valid test scores, the percentage of students who met or exceeded expectations, the assessment participation goal, and the participation rate. The participation goal is established as 95% by the United States Department of Education.

Subgroups	Valid Scores	% Meeting Standards	Participation Goal	Participation Rate	Met Participation?
Schoolwide	124	69.4%	95%	98.6%	<b>YES</b>
White	-	-	--	--	--
African American	37	51.3%	95%	100%	-
Hispanic	-	-	--	--	--
American Indian	-	-	--	--	--
Asian	55	81.8%	95%	100%	<b>YES</b>
Two or More Races	-	-	--	--	--
Students with Disability	-	-	--	--	--
English Language Learners	-	-	--	--	--
Economically Disadvantaged Students	65	70.8%	95%	100%	<b>YES</b>

**YES\* = Met Participation Rate (Participation Averaging applied)**

Data is presented for subgroups when the count is high enough under ESEA Waiver suppression rules.

**ACADEMIC ACHIEVEMENT**

CHARTERS  
SOARING HEIGHTS CS

GRADE SPAN KG-08

**ESEA Waiver - Math**

This table presents, for each subgroup in the school, the total number of valid test scores, the percentage of students who met or exceeded expectations, the assessment participation goal, and the participation rate. The participation goal is established as 95% by the United States Department of Education.

Subgroups	Valid Scores	% Meeting Standards	Participation Goal	Participation Rate	Met Participation?
Schoolwide	125	60%	95%	99.3%	YES
White	-	-	--	--	--
African American	37	40.5%	95%	100%	-
Hispanic	-	-	--	--	--
American Indian	-	-	--	--	--
Asian	55	78.2%	95%	100%	YES
Two or More Races	-	-	--	--	--
Students with Disability	-	-	--	--	--
English Learner Students	-	-	--	--	--
Economically Disadvantaged Students	65	60%	95%	100%	YES

**YES\* = Met Participation Rate (Participation Averaging applied)**

Data is presented for subgroups when the count is high enough under ESEA Waiver suppression rules.

**ACADEMIC ACHIEVEMENT**

CHARTERS  
SOARING HEIGHTS CS

GRADE SPAN KG-08

**PARCC Performance Level**

The PARCC assesses how well students have learned grade-level material in English Language Arts/Literacy (ELA/L) and Math. The tests include questions that measure students' fundamental skills and knowledge, and require them to think critically, solve problems and support or explain their answers.

The PARCC reports students' overall scale scores that range from 650 to 850. To determine whether students have met academic expectations for their grade level/course in ELA/L and Math, students' overall scale scores are categorized into five Performance Levels. Students performing at levels 4 and 5 (met or exceeded expectations) have demonstrated readiness for the next grade level/course, and are on track for college and careers.

Five Performance Levels				
<b>Level 1:</b> Did Not Yet Meet Expectations <i>(Min. 650)</i>	<b>Level 2:</b> Partially Met Expectations	<b>Level 3:</b> Approached Expectations	<b>Level 4:</b> Met Expectations	<b>Level 5:</b> Exceeded Expectations <i>(Max. 850)</i>

**ACADEMIC ACHIEVEMENT**

**CHARTERS  
SOARING HEIGHTS CS**

**GRADE SPAN KG-08**

**PARCC ELA Performance Distribution - Grade - 03**

This table presents the grade level outcomes, as measured by PARCC, in all five performance levels for all subgroups. PARCC consists of five performance levels: Level 1 - Did not yet meet grade-level expectations, Level 2 -Partially met expectations, Level 3 - Approached expectations, Level 4 - Met expectations, and Level 5 - Exceeded expectations.

Subgroup	Valid Scores	Mean Scale Score	State Mean Scale Score	% Level_1	% Level_2	% Level_3	% Level_4	% Level_5	% Met/ Exceeded Expectation	State % Met/Exceeded Expectation
Schoolwide	21	764	744	0%	14%	29%	38%	19%	57%	44%
White	-	-	753	-	-	-	-	-	-	55%
African American	-	-	725	-	-	-	-	-	-	26%
Hispanic	-	-	727	-	-	-	-	-	-	26%
American Indian	-	-	738	-	-	-	-	-	-	40%
Asian	-	-	769	-	-	-	-	-	-	70%
Two or More Races	-	-	751	-	-	-	-	-	-	53%
Students with Disability	-	-	718	-	-	-	-	-	-	24%
English Language Learners	-	-	709	-	-	-	-	-	-	11%
Economically Disadvantaged Students	-	-	724	-	-	-	-	-	-	24%

**ACADEMIC ACHIEVEMENT**

**CHARTERS**

**SOARING HEIGHTS CS**

GRADE SPAN KG-08

**PARCC ELA Performance Distribution - Grade - 04**

This table presents the grade level outcomes, as measured by PARCC, in all five performance levels for all subgroups. PARCC consists of five performance levels: Level 1 - Did not yet meet grade-level expectations, Level 2 -Partially met expectations, Level 3 - Approached expectations, Level 4 - Met expectations, and Level 5 - Exceeded expectations.

Subgroup	Valid Scores	Mean Scale Score	State Mean Scale Score	% Level_1	% Level_2	% Level_3	% Level_4	% Level_5	% Met/ Exceeded Expectation	State % Met/Exceeded Expectation
Schoolwide	20	768	751	0%	0%	30%	40%	30%	70%	52%
White	-	-	758	-	-	-	-	-	-	63%
African American	-	-	733	-	-	-	-	-	-	30%
Hispanic	-	-	737	-	-	-	-	-	-	35%
American Indian	-	-	746	-	-	-	-	-	-	52%
Asian	-	-	773	-	-	-	-	-	-	78%
Two or More Races	-	-	760	-	-	-	-	-	-	62%
Students with Disability	-	-	725	-	-	-	-	-	-	25%
English Language Learners	-	-	717	-	-	-	-	-	-	15%
Economically Disadvantaged Students	12	765	734	0%	0%	33%	42%	25%	67%	31%

**ACADEMIC ACHIEVEMENT**

**CHARTERS  
SOARING HEIGHTS CS**

**GRADE SPAN KG-08**

**PARCC ELA Performance Distribution - Grade - 05**

This table presents the grade level outcomes, as measured by PARCC, in all five performance levels for all subgroups. PARCC consists of five performance levels: Level 1 - Did not yet meet grade-level expectations, Level 2 -Partially met expectations, Level 3 - Approached expectations, Level 4 - Met expectations, and Level 5 - Exceeded expectations.

Subgroup	Valid Scores	Mean Scale Score	State Mean Scale Score	% Level_1	% Level_2	% Level_3	% Level_4	% Level_5	% Met/ Exceeded Expectation	State % Met/Exceeded Expectation
Schoolwide	22	770	751	0%	5%	18%	64%	14%	77%	53%
White	-	-	757	-	-	-	-	-	-	62%
African American	-	-	734	-	-	-	-	-	-	31%
Hispanic	-	-	737	-	-	-	-	-	-	35%
American Indian	-	-	746	-	-	-	-	-	-	45%
Asian	11	772	771	0%	0%	18%	64%	18%	82%	77%
Two or More Races	-	-	758	-	-	-	-	-	-	61%
Students with Disability	-	-	723	-	-	-	-	-	-	21%
English Language Learners	-	-	717	-	-	-	-	-	-	15%
Economically Disadvantaged Students	11	773	734	0%	9%	9%	64%	18%	82%	31%

**ACADEMIC ACHIEVEMENT**

CHARTERS

SOARING HEIGHTS CS

GRADE SPAN KG-08

**PARCC ELA Performance Distribution - Grade - 06**

This table presents the grade level outcomes, as measured by PARCC, in all five performance levels for all subgroups. PARCC consists of five performance levels: Level 1 - Did not yet meet grade-level expectations, Level 2 -Partially met expectations, Level 3 - Approached expectations, Level 4 - Met expectations, and Level 5 - Exceeded expectations.

Subgroup	Valid Scores	Mean Scale Score	State Mean Scale Score	% Level_1	% Level_2	% Level_3	% Level_4	% Level_5	% Met/ Exceeded Expectation	State % Met/Exceeded Expectation
Schoolwide	18	761	749	6%	6%	11%	61%	17%	78%	50%
White	-	-	755	-	-	-	-	-	-	59%
African American	-	-	732	-	-	-	-	-	-	29%
Hispanic	-	-	736	-	-	-	-	-	-	34%
American Indian	-	-	743	-	-	-	-	-	-	39%
Asian	-	-	770	-	-	-	-	-	-	77%
Two or More Races	-	-	753	-	-	-	-	-	-	57%
Students with Disability	-	-	718	-	-	-	-	-	-	17%
English Language Learners	-	-	711	-	-	-	-	-	-	11%
Economically Disadvantaged Students	-	-	733	-	-	-	-	-	-	30%

**ACADEMIC ACHIEVEMENT**

**CHARTERS**

**SOARING HEIGHTS CS**

GRADE SPAN KG-08

**PARCC ELA Performance Distribution - Grade - 07**

This table presents the grade level outcomes, as measured by PARCC, in all five performance levels for all subgroups. PARCC consists of five performance levels: Level 1 - Did not yet meet grade-level expectations, Level 2 -Partially met expectations, Level 3 - Approached expectations, Level 4 - Met expectations, and Level 5 - Exceeded expectations.

Subgroup	Valid Scores	Mean Scale Score	State Mean Scale Score	% Level_1	% Level_2	% Level_3	% Level_4	% Level_5	% Met/ Exceeded Expectation	State % Met/Exceeded Expectation
Schoolwide	20	772	750	5%	5%	5%	50%	35%	85%	53%
White	-	-	757	-	-	-	-	-	-	61%
African American	-	-	730	-	-	-	-	-	-	31%
Hispanic	-	-	736	-	-	-	-	-	-	36%
American Indian	-	-	746	-	-	-	-	-	-	49%
Asian	-	-	777	-	-	-	-	-	-	80%
Two or More Races	-	-	756	-	-	-	-	-	-	58%
Students with Disability	-	-	713	-	-	-	-	-	-	18%
English Language Learners	-	-	703	-	-	-	-	-	-	11%
Economically Disadvantaged Students	-	-	733	-	-	-	-	-	-	33%

**ACADEMIC ACHIEVEMENT**

**CHARTERS  
SOARING HEIGHTS CS**

**GRADE SPAN KG-08**

**PARCC ELA Performance Distribution - Grade - 08**

This table presents the grade level outcomes, as measured by PARCC, in all five performance levels for all subgroups. PARCC consists of five performance levels: Level 1 - Did not yet meet grade-level expectations, Level 2 -Partially met expectations, Level 3 - Approached expectations, Level 4 - Met expectations, and Level 5 - Exceeded expectations.

Subgroup	Valid Scores	Mean Scale Score	State Mean Scale Score	% Level_1	% Level_2	% Level_3	% Level_4	% Level_5	% Met/ Exceeded Expectation	State % Met/Exceeded Expectation
Schoolwide	23	751	750	0%	9%	39%	48%	4%	52%	53%
White	-	-	757	-	-	-	-	-	-	61%
African American	11	742	730	0%	18%	45%	36%	0%	36%	31%
Hispanic	-	-	735	-	-	-	-	-	-	37%
American Indian	-	-	741	-	-	-	-	-	-	49%
Asian	-	-	778	-	-	-	-	-	-	80%
Two or More Races	-	-	753	-	-	-	-	-	-	55%
Students with Disability	-	-	713	-	-	-	-	-	-	16%
English Language Learners	-	-	701	-	-	-	-	-	-	9%
Economically Disadvantaged Students	12	756	732	0%	8%	25%	58%	8%	67%	34%

**ACADEMIC ACHIEVEMENT**

CHARTERS  
SOARING HEIGHTS CS

GRADE SPAN KG-08

**PARCC MATH - Performance Distribution - Grade - 03**

This table presents the grade level outcomes, as measured by PARCC, in all five performance levels for all subgroups. PARCC consists of five performance levels: Level 1 - Did not yet meet grade-level expectations, Level 2 -Partially met expectations, Level 3 - Approached expectations, Level 4 - Met expectations, and Level 5 - Exceeded expectations.

Subgroup	Valid Scores	Mean Scale Score	State Mean Scale Score	% Level_1	% Level_2	% Level_3	% Level_4	% Level_5	% Met/ Exceeded Expectation	State % Met/Exceeded Expectation
Schoolwide	22	759	746	5%	18%	14%	45%	18%	64%	46%
White	-	-	752	-	-	-	-	-	-	56%
African American	-	-	728	-	-	-	-	-	-	25%
Hispanic	-	-	733	-	-	-	-	-	-	28%
American Indian	-	-	742	-	-	-	-	-	-	41%
Asian	-	-	772	-	-	-	-	-	-	77%
Two or More Races	-	-	751	-	-	-	-	-	-	54%
Students with Disability	-	-	727	-	-	-	-	-	-	27%
English Language Learners	-	-	724	-	-	-	-	-	-	17%
Economically Disadvantaged Students	-	-	730	-	-	-	-	-	-	26%

**ACADEMIC ACHIEVEMENT**

CHARTERS  
SOARING HEIGHTS CS

GRADE SPAN KG-08

**PARCC MATH - Performance Distribution - Grade - 04**

This table presents the grade level outcomes, as measured by PARCC, in all five performance levels for all subgroups. PARCC consists of five performance levels: Level 1 - Did not yet meet grade-level expectations, Level 2 -Partially met expectations, Level 3 - Approached expectations, Level 4 - Met expectations, and Level 5 - Exceeded expectations.

Subgroup	Valid Scores	Mean Scale Score	State Mean Scale Score	% Level_1	% Level_2	% Level_3	% Level_4	% Level_5	% Met/ Exceeded Expectation	State % Met/Exceeded Expectation
Schoolwide	20	759	744	5%	0%	25%	55%	15%	70%	42%
White	-	-	749	-	-	-	-	-	-	50%
African American	-	-	727	-	-	-	-	-	-	20%
Hispanic	-	-	732	-	-	-	-	-	-	26%
American Indian	-	-	740	-	-	-	-	-	-	40%
Asian	-	-	769	-	-	-	-	-	-	75%
Two or More Races	-	-	750	-	-	-	-	-	-	52%
Students with Disability	-	-	724	-	-	-	-	-	-	21%
English Language Learners	-	-	722	-	-	-	-	-	-	15%
Economically Disadvantaged Students	12	754	730	8%	0%	17%	67%	8%	75%	23%

**ACADEMIC ACHIEVEMENT**

**CHARTERS  
SOARING HEIGHTS CS**

**GRADE SPAN KG-08**

**PARCC MATH - Performance Distribution - Grade - 05**

This table presents the grade level outcomes, as measured by PARCC, in all five performance levels for all subgroups. PARCC consists of five performance levels: Level 1 - Did not yet meet grade-level expectations, Level 2 -Partially met expectations, Level 3 - Approached expectations, Level 4 - Met expectations, and Level 5 - Exceeded expectations.

Subgroup	Valid Scores	Mean Scale Score	State Mean Scale Score	% Level_1	% Level_2	% Level_3	% Level_4	% Level_5	% Met/ Exceeded Expectation	State % Met/Exceeded Expectation
Schoolwide	22	762	744	0%	9%	27%	50%	14%	64%	42%
White	-	-	749	-	-	-	-	-	-	49%
African American	-	-	728	-	-	-	-	-	-	21%
Hispanic	-	-	733	-	-	-	-	-	-	26%
American Indian	-	-	745	-	-	-	-	-	-	46%
Asian	11	771	768	0%	0%	27%	55%	18%	73%	74%
Two or More Races	-	-	749	-	-	-	-	-	-	50%
Students with Disability	-	-	724	-	-	-	-	-	-	19%
English Language Learners	-	-	724	-	-	-	-	-	-	17%
Economically Disadvantaged Students	11	758	731	0%	18%	27%	36%	18%	55%	23%

**ACADEMIC ACHIEVEMENT**

**CHARTERS  
SOARING HEIGHTS CS**

**GRADE SPAN KG-08**

**PARCC MATH - Performance Distribution - Grade - 06**

This table presents the grade level outcomes, as measured by PARCC, in all five performance levels for all subgroups. PARCC consists of five performance levels: Level 1 - Did not yet meet grade-level expectations, Level 2 -Partially met expectations, Level 3 - Approached expectations, Level 4 - Met expectations, and Level 5 - Exceeded expectations.

Subgroup	Valid Scores	Mean Scale Score	State Mean Scale Score	% Level_1	% Level_2	% Level_3	% Level_4	% Level_5	% Met/ Exceeded Expectation	State % Met/Exceeded Expectation
Schoolwide	18	752	743	6%	11%	22%	56%	6%	61%	42%
White	-	-	749	-	-	-	-	-	-	50%
African American	-	-	726	-	-	-	-	-	-	19%
Hispanic	-	-	731	-	-	-	-	-	-	25%
American Indian	-	-	740	-	-	-	-	-	-	35%
Asian	-	-	768	-	-	-	-	-	-	75%
Two or More Races	-	-	745	-	-	-	-	-	-	44%
Students with Disability	-	-	718	-	-	-	-	-	-	15%
English Language Learners	-	-	718	-	-	-	-	-	-	14%
Economically Disadvantaged Students	-	-	729	-	-	-	-	-	-	23%

**ACADEMIC ACHIEVEMENT**

**CHARTERS  
SOARING HEIGHTS CS**

**GRADE SPAN KG-08**

**PARCC MATH - Performance Distribution - Grade - 07**

This table presents the grade level outcomes, as measured by PARCC, in all five performance levels for all subgroups. PARCC consists of five performance levels: Level 1 - Did not yet meet grade-level expectations, Level 2 -Partially met expectations, Level 3 - Approached expectations, Level 4 - Met expectations, and Level 5 - Exceeded expectations.

Subgroup	Valid Scores	Mean Scale Score	State Mean Scale Score	% Level_1	% Level_2	% Level_3	% Level_4	% Level_5	% Met/ Exceeded Expectation	State % Met/Exceeded Expectation
Schoolwide	20	756	740	0%	10%	20%	60%	10%	70%	38%
White	-	-	745	-	-	-	-	-	-	46%
African American	-	-	725	-	-	-	-	-	-	17%
Hispanic	-	-	730	-	-	-	-	-	-	23%
American Indian	-	-	734	-	-	-	-	-	-	32%
Asian	-	-	760	-	-	-	-	-	-	68%
Two or More Races	-	-	742	-	-	-	-	-	-	43%
Students with Disability	-	-	715	-	-	-	-	-	-	11%
English Language Learners	-	-	717	-	-	-	-	-	-	11%
Economically Disadvantaged Students	-	-	728	-	-	-	-	-	-	21%

**ACADEMIC ACHIEVEMENT**

**CHARTERS  
SOARING HEIGHTS CS**

**GRADE SPAN KG-08**

**PARCC MATH - Performance Distribution - Grade - 08**

This table presents the grade level outcomes, as measured by PARCC, in all five performance levels for all subgroups. PARCC consists of five performance levels: Level 1 - Did not yet meet grade-level expectations, Level 2 -Partially met expectations, Level 3 - Approached expectations, Level 4 - Met expectations, and Level 5 - Exceeded expectations.

Subgroup	Valid Scores	Mean Scale Score	State Mean Scale Score	% Level_1	% Level_2	% Level_3	% Level_4	% Level_5	% Met/ Exceeded Expectation	State % Met/Exceeded Expectation
Schoolwide	23	732	726	13%	39%	13%	35%	0%	35%	24%
White	-	-	732	-	-	-	-	-	-	29%
African American	11	720	715	27%	36%	18%	18%	0%	18%	14%
Hispanic	-	-	721	-	-	-	-	-	-	19%
American Indian	-	-	722	-	-	-	-	-	-	15%
Asian	-	-	744	-	-	-	-	-	-	46%
Two or More Races	-	-	724	-	-	-	-	-	-	24%
Students with Disability	-	-	705	-	-	-	-	-	-	9%
English Language Learners	-	-	706	-	-	-	-	-	-	10%
Economically Disadvantaged Students	12	742	719	0%	33%	17%	50%	0%	50%	17%

**ACADEMIC ACHIEVEMENT**

CHARTERS  
SOARING HEIGHTS CS

GRADE SPAN KG-08

**2015 National Assessment Educational Progress (NAEP)**

The National Assessment of Educational Progress (NAEP) is the largest national assessment of what our nation’s students know and can do. NAEP assesses fourth-, eighth-, and twelfth-grade students in subjects such as reading, mathematics, science, and writing. The reporting of NAEP scores on state report cards is a federal mandate. The results of NAEP are also published as the Nation’s Report Card, and are available for the nation, states, and, in some cases, urban districts. The NAEP scores on the report card include grades four and eight 2015 reading and math scores for New Jersey which are the last scores published.

For subgroup outcomes, visit:

- Reading Grade 4 <http://www.nj.gov/education/pr/1415/naep/naep4read.html>
- Reading Grade 8 <http://www.nj.gov/education/pr/1415/naep/naep8read.html>
- Math Grade 4 <http://www.nj.gov/education/pr/1415/naep/naep4math.html>
- Math Grade 8 <http://www.nj.gov/education/pr/1415/naep/naep8math.html>

For more information, visit <http://nces.ed.gov/nationsreportcard/>

**Proficiency Percentages**

Subject	Grade	State/Nation	Below Basic	Basic	Proficient	Advanced
Reading	Grade 4	State (NJ)	25	33	31	12
	Grade 4	Nation	31	33	27	9
	Grade 8	State (NJ)	20	39	35	6
	Grade 8	Nation	24	42	31	4
Math	Grade 4	State (NJ)	14	39	38	9
	Grade 4	Nation	18	42	33	7
	Grade 8	State (NJ)	21	32	30	16
	Grade 8	Nation	29	38	25	8

**ACADEMIC ACHIEVEMENT**

**CHARTERS**

**SOARING HEIGHTS CS**

**GRADE SPAN KG-08**

**NJASK Results - Science Grade Level - 04**

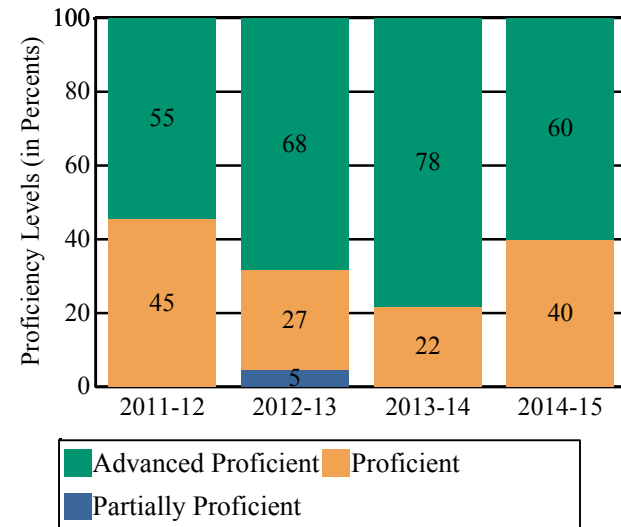
This table presents the grade level proficiency results, as measured by NJASK, in Advanced Proficient, Proficient, and Partially Proficient categories for all appropriate subgroups.

Subgroups	Advanced Proficient	Proficient	Partially Proficient
Schoolwide	60%	40%	0%
White	-	-	-
African American	-	-	-
Hispanic	-	-	-
American Indian	-	-	-
Asian	55%	45%	0%
Two or More Races	-	-	-
Students with Disability	-	-	-
English Language Learners	-	-	-
Economically Disadvantaged Students	-	-	-

Data is presented for subgroups when the count is high enough under ESEA Waiver suppression rules.

**NJASK Proficiency Trends - Science - Grade Level - 04**

This graph presents the grade level outcomes in the categories of Advanced Proficient, Proficient, and Partially Proficient over the last four years.



**ACADEMIC ACHIEVEMENT**

**CHARTERS**

**SOARING HEIGHTS CS**

**GRADE SPAN KG-08**

**NJASK Results - Science Grade Level - 08**

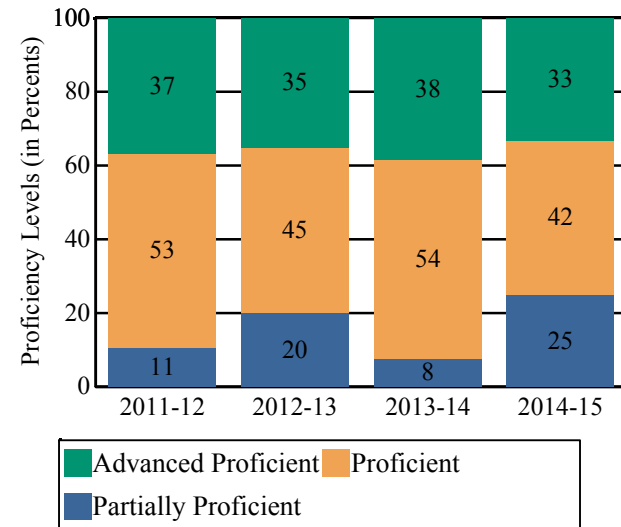
This table presents the grade level proficiency results, as measured by NJASK, in Advanced Proficient, Proficient, and Partially Proficient categories for all appropriate subgroups.

Subgroups	Advanced Proficient	Proficient	Partially Proficient
Schoolwide	33%	42%	25%
White	-	-	-
African American	27%	36%	36%
Hispanic	-	-	-
American Indian	-	-	-
Asian	-	-	-
Two or More Races	-	-	-
Students with Disability	-	-	-
English Language Learners	-	-	-
Economically Disadvantaged Students	-	-	-

Data is presented for subgroups when the count is high enough under ESEA Waiver suppression rules.

**NJASK Proficiency Trends - Science - Grade Level - 08**

This graph presents the grade level outcomes in the categories of Advanced Proficient, Proficient, and Partially Proficient over the last four years.



**COLLEGE AND CAREER READINESS**

CHARTERS

SOARING HEIGHTS CS

GRADE SPAN KG-08

Students in both elementary and middle schools begin to demonstrate college readiness behaviors long before they even enter high school. Among the behaviors that research has shown to be indicative of successfully graduating high school is regularly attending school. For all elementary and middle schools, this includes the percentage of students that are chronically absent each year, defined as missing more than 10% of possible school days. Also presented is the percentage of students participating in Visual and Performing Arts coursework and Algebra I course outcomes.

**Algebra I Course Enrollment**

This table presents the count of students in this school who were reported in the Algebra I course code in NJSMART and the count of students who took the Algebra I test of PARCC.

Algebra I Enrollment Count	Algebra I PARCC Test Count
0	0

**Algebra I Test Taking**

This table presents the percentage of students, as reported in NJSMART, who earned a C or higher in their Algebra I course and the percentage of students who met or exceeded expectation on the Algebra I test of PARCC.

Algebra I Percent C or Better	Algebra I PARCC Percent Met or Exceeded Expectation
0.0%	0.0%

- Data Suppressed to protect the confidentiality of students

**COLLEGE AND CAREER READINESS**

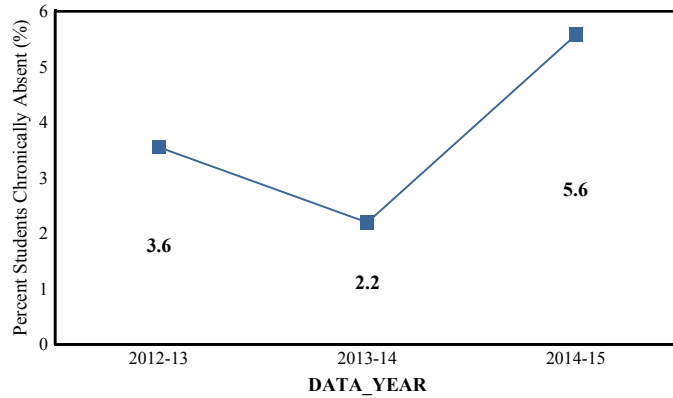
**CHARTERS**

**SOARING HEIGHTS CS**

GRADE SPAN KG-08

**Chronic Absenteeism Trend**

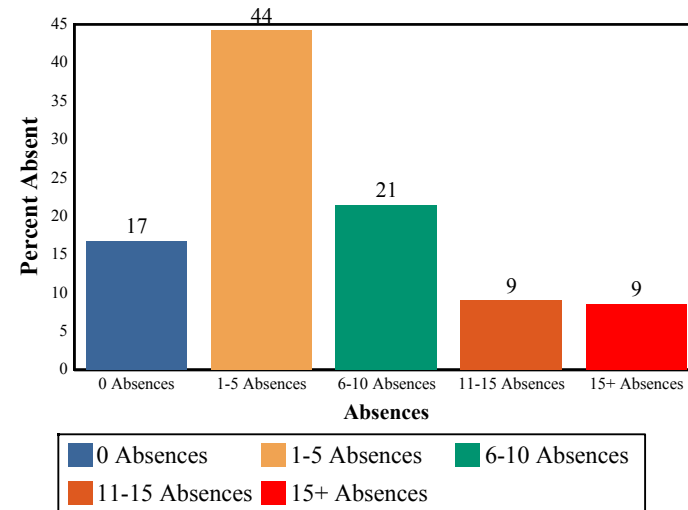
This graph presents the percentage of the enrolled students who were chronically absent for the past three years.



<b>Chronic Absenteeism for 2014-15</b>	<b>5.58%</b>
--	--------------

**Absenteeism**

The chart below presents the percentage of students who were absent in each category of absence: 0 absences, 1- 5 absences, 6 - 10 absences, 11 - 15 absences, and more than 15 absences. An absence is defined as being 'not present' and includes the days missed regardless of whether they were determined to be excused or unexcused by the school.



**COLLEGE AND CAREER READINESS**

CHARTERS

SOARING HEIGHTS CS

GRADE SPAN KG-08

**Visual and Performing Arts**

The chart below contains the percentage of students who were enrolled in at least one Dance, Drama/Theater, Music or Visual Arts class in this school. The last row shows the percentage of students who were enrolled in any Visual and Performing Arts classes in the school.

Percent of Students Enrolled	School	State
Dance	N/R	1.6%
Drama/Theater	N/R	3.9%
Music	N/R	66.0%
Visual Arts	97.1%	71.1%
<b>Total: All Visual and Performing Arts</b>	97.1%	89.8%

N/R - Data Not Reported

**STUDENT GROWTH**

**CHARTERS**

**SOARING HEIGHTS CS**

**GRADE SPAN KG-08**

This section of the performance report presents data about student growth, utilizing the Student Growth Percentile Methodology (SGP). SGP creates a measure of how students progressed in grades 4 through 8 in Language Arts Literacy and in grades 4 through 7 in Math when compared to other students with a similar test score history. A short video explaining the methodology can be found here: <http://www.state.nj.us/education/njsmart/performance/>

The below chart consist of five columns with measures. The first column - Schoolwide Performance - presents the schoolwide median growth score in either English Language Arts/Literacy or Mathematics for all students in the school. The second column - Peer Percentile - indicates how the school's growth performance compares to its group of peer schools. The third column - Statewide Percentile - indicates how a school compares to schools across the state. The last column - Met Target? - indicates whether the school's performance met or exceeded the statewide target, which was set to 35.

The fourth row presents the averages of the peer school percentiles, the averages of statewide percentiles, the percentage of statewide targets met.

Student Growth Indicators	Schoolwide Performance	Peer Percentile	Statewide Percentile	Statewide Target	Met Target?
Student Growth on Language Arts	67	97	94	35	YES
Student Growth on Math	64	97	90	35	YES
		97	92		100%

**Student Growth**

This table presents for all students with growth scores the interaction between their performance on PARCC and their growth scores. For example, in the top left cell the percentage of students who are both in Level 1 - Did not yet meet expectations AND also demonstrating low growth is displayed.

**Language Arts**

(Expectations)	GROWTH		
	Low	Typical	High
Did Not Yet Meet	2%	0%	0%
Partially Met	2%	2%	1%
Approached	11%	6%	8%
Met	8%	16%	27%
Exceeded	1%	3%	15%

**Math**

(Expectations)	GROWTH		
	Low	Typical	High
Did Not Yet Meet	2%	2%	0%
Partially Met	2%	4%	9%
Approached	6%	8%	7%
Met	6%	17%	29%
Exceeded	0%	2%	6%

**Low Growth** is defined as an Student Growth Percentile score less than 35.  
**Typical Growth** is defined as an Student Growth Percentile score between 35 and 65.  
**High Growth** is defined as a Student Growth Percentile score higher than 65.

**WITHIN SCHOOL ACHIEVEMENT GAP**

**CHARTERS**

**SOARING HEIGHTS CS**

**GRADE SPAN KG-08**

This section of the performance report presents data about the achievement gap that exists within a school - as measured by the difference between the students' scale scores at the 25th and 75th percentile in the school, the Interquartile Range (IQR). Taken together with an understanding of the overall and average achievement levels in the school, the IQR furthers an understanding of the range of student outcomes that exist in a school. A school gap smaller than the state gap indicates that the school's range of student outcomes is narrower than the state's while a school gap larger than the state gap indicates that the school's range of student outcomes is broader than the state's.

**Grade Level - 03**

**PARCC Language Arts 25th %ile vs 75th%ile**

This table presents the scale scores associated with students at the bottom (0th percentile), the 25th percentile, the 50th percentile, the 75th percentile and the top (99th percentile) of school's distribution.

Percentile	School Scale Score	State Scale Score
99th	850	850
75th	781	770
50th	755	743
25th	746	715
0th	700	650

	Scale Score Gap - School	Scale Score Gap - State
25th vs 75th Gap	35	55

**Grade Level - 03**

**PARCC MATH 25th %ile vs 75th%ile**

This table presents the scale scores associated with students at the bottom (0th percentile), the 25th percentile, the 50th percentile, the 75th percentile and the top (99th percentile) of school's distribution.

Percentile	School Scale Score	State Scale Score
99th	820	850
75th	781	767
50th	758	745
25th	736	722
0th	695	650

	Scale Score Gap - School	Scale Score Gap - State
25th vs 75th Gap	45	45

**WITHIN SCHOOL ACHIEVEMENT GAP**

**CHARTERS**

**SOARING HEIGHTS CS**

GRADE SPAN KG-08

**Grade Level - 04**

**PARCC Language Arts 25th %ile vs 75th%ile**

This table presents the scale scores associated with students at the bottom (0th percentile), the 25th percentile, the 50th percentile, the 75th percentile and the top (99th percentile) of school's distribution.

Percentile	School Scale Score	State Scale Score
99th	811	850
75th	782	773
50th	762	750
25th	737	728
0th	725	650

	Scale Score Gap - School	Scale Score Gap - State
25th vs 75th Gap	45	45

**Grade Level - 05**

**PARCC Language Arts 25th %ile vs 75th%ile**

This table presents the scale scores associated with students at the bottom (0th percentile), the 25th percentile, the 50th percentile, the 75th percentile and the top (99th percentile) of school's distribution.

Percentile	School Scale Score	State Scale Score
99th	824	850
75th	791	773
50th	770	751
25th	753	728
0th	713	650

	Scale Score Gap - School	Scale Score Gap - State
25th vs 75th Gap	38	45

**Grade Level - 04**

**PARCC MATH 25th %ile vs 75th%ile**

This table presents the scale scores associated with students at the bottom (0th percentile), the 25th percentile, the 50th percentile, the 75th percentile and the top (99th percentile) of school's distribution.

Percentile	School Scale Score	State Scale Score
99th	819	850
75th	769	764
50th	757	742
25th	740	721
0th	680	650

	Scale Score Gap - School	Scale Score Gap - State
25th vs 75th Gap	29	43

**Grade Level - 05**

**PARCC MATH 25th %ile vs 75th%ile**

This table presents the scale scores associated with students at the bottom (0th percentile), the 25th percentile, the 50th percentile, the 75th percentile and the top (99th percentile) of school's distribution.

Percentile	School Scale Score	State Scale Score
99th	811	850
75th	782	763
50th	763	743
25th	744	723
0th	706	650

	Scale Score Gap - School	Scale Score Gap - State
25th vs 75th Gap	38	40

**WITHIN SCHOOL ACHIEVEMENT GAP**

CHARTERS  
SOARING HEIGHTS CS

GRADE SPAN KG-08

**Grade Level - 06**

**PARCC Language Arts 25th %ile vs 75th%ile**

This table presents the scale scores associated with students at the bottom (0th percentile), the 25th percentile, the 50th percentile, the 75th percentile and the top (99th percentile) of school's distribution.

Percentile	School Scale Score	State Scale Score
99th	794	850
75th	776	770
50th	761	749
25th	745	726
0th	690	650

	Scale Score Gap - School	Scale Score Gap - State
25th vs 75th Gap	31	44

**Grade Level - 07**

**PARCC Language Arts 25th %ile vs 75th%ile**

This table presents the scale scores associated with students at the bottom (0th percentile), the 25th percentile, the 50th percentile, the 75th percentile and the top (99th percentile) of school's distribution.

Percentile	School Scale Score	State Scale Score
99th	838	850
75th	792	776
50th	778	751
25th	758	724
0th	687	650

	Scale Score Gap - School	Scale Score Gap - State
25th vs 75th Gap	34	52

**Grade Level - 06**

**PARCC MATH 25th %ile vs 75th%ile**

This table presents the scale scores associated with students at the bottom (0th percentile), the 25th percentile, the 50th percentile, the 75th percentile and the top (99th percentile) of school's distribution.

Percentile	School Scale Score	State Scale Score
99th	787	850
75th	768	763
50th	751	742
25th	736	721
0th	692	650

	Scale Score Gap - School	Scale Score Gap - State
25th vs 75th Gap	32	42

**Grade Level - 07**

**PARCC MATH 25th %ile vs 75th%ile**

This table presents the scale scores associated with students at the bottom (0th percentile), the 25th percentile, the 50th percentile, the 75th percentile and the top (99th percentile) of school's distribution.

Percentile	School Scale Score	State Scale Score
99th	797	850
75th	770	759
50th	755	740
25th	738	720
0th	716	650

	Scale Score Gap - School	Scale Score Gap - State
25th vs 75th Gap	32	39

**WITHIN SCHOOL ACHIEVEMENT GAP**

CHARTERS  
SOARING HEIGHTS CS

**Grade Level - 08**

**PARCC Language Arts 25th %ile vs 75th%ile**

This table presents the scale scores associated with students at the bottom (0th percentile), the 25th percentile, the 50th percentile, the 75th percentile and the top (99th percentile) of school's distribution.

Percentile	School Scale Score	State Scale Score
99th	796	850
75th	765	777
50th	751	751
25th	736	723
0th	709	650

	Scale Score Gap - School	Scale Score Gap - State
25th vs 75th Gap	29	54

**Grade Level - 08**

**PARCC MATH 25th %ile vs 75th%ile**

This table presents the scale scores associated with students at the bottom (0th percentile), the 25th percentile, the 50th percentile, the 75th percentile and the top (99th percentile) of school's distribution.

Percentile	School Scale Score	State Scale Score
99th	792	850
75th	756	748
50th	723	726
25th	711	704
0th	677	650

	Scale Score Gap - School	Scale Score Gap - State
25th vs 75th Gap	45	44

**SCHOOL CLIMATE**

**CHARTERS**

**SOARING HEIGHTS CS**

**GRADE SPAN KG-08**

**Length of School Day**

This table presents the amount of time a school is in session for a typical student on a normal school day.

	School
2014-15	6 Hrs. 15 Mins.

**Student Suspension Rate**

This table presents the percentage of students who were suspended one or more times during the school year.

	School
2014-15	6.8%

**Instructional Time**

This table presents the amount of time that a typical student is engaged in instructional activities under the supervision of a certified teacher.

2014-15	School
Full Time	5 Hrs. 30 Mins.
Shared Time	0 Hrs. 0 Mins.

**Student Expulsions**

This table presents the number of students who were expelled from the school and district during the school year.

	School
2014-15	0

**Student to Staff Ratio**

This table presents the count of students per faculty member or administrator in the school. All staff are counted in full-time equivalents.

2014-15	School
Faculty	16
Administrators	0

**N/R - Data Not Reported**

**SCHOOL PEER GROUP**  
**CHARTERS**  
**SOARING HEIGHTS CS**

GRADE SPAN KG-08

This table presents the list of peer schools in alphabetical order by county name that was created specifically for this school (highlighted in yellow). Peer schools are drawn from across the state and represent schools that have similar grade configurations and that are educating students of similar demographic characteristics, as measured by enrollment in Free/Reduced Lunch Programs, Limited English Proficiency or Special Education Programs.

<u>COUNTY NAME</u>	<u>DISTRICT NAME</u>	<u>SCHOOL NAME</u>	<u>CDS CODE</u>	<u>GRADES PAN</u>	<u>ECONOMICALLY DISADVANTAGED</u>	<u>ENGLISH LANGUAGE LEARNERS</u>	<u>SPECIAL EDUCATION</u>
ATLANTIC	ABSECON CITY	EMMA C ATTALES	01-0010-050	05-08	46.3%	1.4%	10%
ATLANTIC	EGG HARBOR TWP	FERNWOOD AVENUE MIDDLE SCHOOL	01-1310-039	06-08	50%	1.4%	9.3%
ATLANTIC	HAMMONTON TOWN	HAMMONTON MIDDLE SCHOOL	01-1960-060	06-08	37%	1.2%	14.2%
BERGEN	LODI BOROUGH	THOMAS JEFFERSON MIDDLE SCHOOL	03-2740-067	06-08	65.9%	4.7%	11.3%
CAMDEN	CHERRY HILL TWP	JOHN A. CARUSI MIDDLE SCHOOL	07-0800-067	06-08	34%	2%	19.4%
CAMDEN	COLLINGSWOOD BORO	COLLINGSWOOD MIDDLE SCHOOL	07-0940-040	06-08	36.2%	0.9%	16.8%
CAMDEN	GLOUCESTER TWP	ANN A. MULLEN MIDDLE SCHOOL	07-1780-100	06-08	35%	0.1%	13.1%
CAMDEN	OAKLYN BORO	OAKLYN PUBLIC SCHOOL	07-3770-050	KG-09	38%	2.1%	16.2%
CAMDEN	RUNNEMEDE BORO	MARY E. VOLZ ELEMENTARY SCHOOL	07-4590-040	PK-08	37.8%	0.6%	15.7%
CAMDEN	STRATFORD BORO	SAMUEL S. YELLIN ELEMENTARY SCHOOL	07-5080-060	04-08	32.7%	1.6%	20.4%
CAPE MAY	WILDWOOD CREST BORO	CREST MEMORIAL SCHOOL	09-5800-030	PK-08	36.6%	2%	17.3%
<b>CHARTERS</b>	<b>SOARING HEIGHTS CS</b>	<b>SOARING HEIGHTS</b>	<b>80-7830-980</b>	<b>KG-08</b>	<b>51.3%</b>	<b>0%</b>	<b>6.4%</b>
CUMBERLANI	STOW CREEK TWP	STOW CREEK TOWNSHIP	11-5070-050	KG-08	40.5%	0%	9%
CUMBERLANI	UPPER DEERFIELD TWP	WOODRUFF MIDDLE SCHOOL	11-5300-070	06-08	58%	6.2%	21%
ESSEX	BLOOMFIELD TWP	BLOOMFIELD MIDDLE SCHOOL	13-0410-030	07-08	51%	3.9%	17.9%
ESSEX	WEST ORANGE TOWN	LIBERTY MIDDLE SCHOOL	13-5680-135	07-08	47.7%	3.1%	18%
GLOUCESTER	WASHINGTON TWP	ORCHARD VALLEY MIDDLE SCHOOL	15-5500-050	06-08	30.1%	0.7%	18.5%
MERCER	HAMILTON TWP	RICHARD C CROCKETT MIDDLE SCHOOL	21-1950-083	06-08	49.3%	2.9%	16.6%
MIDDLESEX	EDISON TWP	HERBERT HOOVER MIDDLE SCHOOL	23-1290-057	06-08	31.5%	0.2%	14.7%
MIDDLESEX	JAMESBURG BORO	GRACE M. BRECKWEDEL MIDDLE SCHOOL	23-2370-075	06-08	48%	1.7%	11%
MIDDLESEX	SOUTH RIVER BORO	SOUTH RIVER MIDDLE SCHOOL	23-4920-055	06-08	48%	2.9%	16.4%
MONMOUTH	NEPTUNE CITY	WOODROW WILSON	25-3500-060	PK-08	53.3%	4.8%	19.7%

**SCHOOL PEER GROUP**

**CHARTERS**

**SOARING HEIGHTS CS**

**GRADE SPAN KG-08**

OCEAN	BARNEGAT TWP	<b>RUSSELL O. BRACKMAN MIDDLE SCHOOL</b>	29-0185-050	06-08	36.5%	0.9%	17.3%
OCEAN	BRICK TWP	<b>LAKE RIVIERA MIDDLE SCHOOL</b>	29-0530-043	06-08	34.2%	1.2%	19.4%
PASSAIC	HALEDON BORO	<b>HALEDON PUBLIC SCHOOL</b>	31-1920-015	PK-08	69.4%	5.5%	13.2%
PASSAIC	WOODLAND PARK	<b>MEMORIAL MIDDLE SCHOOL</b>	31-5690-070	05-08	49%	2.7%	15.2%
SALEM	EL SINBORO TWP	<b>EL SINBORO TOWNSHIP SCHOOL</b>	33-1350-050	KG-08	40.3%	0%	11.3%
SALEM	QUINTON TWP	<b>QUINTON TOWNSHIP SCHOOL DISTRICT</b>	33-4280-050	PK-08	44.8%	0.8%	12.2%
SOMERSET	SOMERVILLE BORO	<b>SOMERVILLE MIDDLE SCHOOL</b>	35-4820-055	06-08	44.4%	3.2%	15.8%
UNION	UNION TWP	<b>BURNET MIDDLE SCHOOL</b>	39-5290-060	06-08	45.2%	2%	13.9%
WARREN	ALPHA BORO	<b>ALPHA BOROUGH SCHOOL</b>	41-0070-010	PK-08	37%	0.4%	14.4%