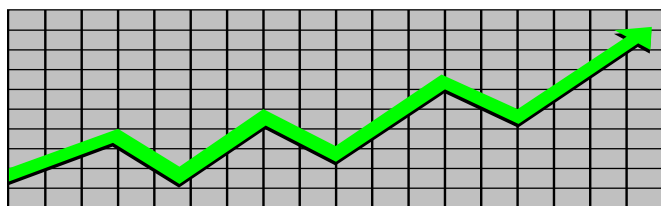


State of New Jersey
Department of Human Services
Division of Family Development

CURRENT PROGRAM STATISTICS



October 2021

Natasha Johnson, Assistant Commissioner

TABLE OF CONTENTS

HIGHLIGHTS:

WFNJ/TANF	ii
NJ SNAP	ii
EMERGENCY ASSISTANCE	ii
GENERAL ASSISTANCE	iii
GA Emergency Assistance.....	iii
GA Program.....	iii
CHILD SUPPORT SERVICES	iii
WORK FIRST NEW JERSEY (WFNJ)	iii
STATISTICS- BY STATE & COUNTY	1
Table 1: WFNJ/TANF Families & Persons (NJ Statewide) October 2019 to 2021.....	1
Table 2: WFNJ/TANF Families (by County)- October 2021.....	2
Table 2B: WFNJ/TANF Persons, Adults, & Children (by County)- October 2021.....	3
Table 3: TANF Work Participation Rates Over 12 Month Period (by County)- October 2021.....	4
Table 4: TANF Work Participation Rates Over 12 Month Period (NJ Statewide)- October 2021.....	5
Table 5: NJ SNAP Households/Persons (NJ Statewide) October 2019 to 2021.....	6
Table 6: NJ SNAP Recipient Trends (NJ Statewide) October 2019 to 2021.....	7
Table 7: NJ SNAP Households/Persons (by County)- October 2021.....	8
Table 8: Emergency Assistance Program (NJ Statewide) October 2019 to 2021.....	9
Table 9: Emergency Assistance Program (by County)- October 2021.....	10
Table 10: General Assistance Program (NJ Statewide) October 2019 to 2021.....	11
Table 11: General Assistance Program (by County)- October 2021.....	12
Table 12: Child Support Services Distributions (NJ Statewide) FFY 2021.....	13
Table 13: Child Support Services Paternities Established- October 2021.....	14
Table 14: Child Support Services Cases With Orders- October 2021.....	15
Table 15: Child Support Services Collections On Current Support- October 2021.....	16
Table 16: Child Support Services Cases With Payments On Arrears- October 2021.....	17
Table 17: WFNJ Statistical Summary- October 2021.....	18
ACRONYMS	19
EXPLANATORY NOTES	20
WFNJ Statistical Summary (Table 17).....	20

DIVISION OF FAMILY DEVELOPMENT CURRENT PROGRAM STATISTICS OCTOBER 2021

Each month the Division of Family Development publishes its program statistics for: WFNJ/TANF, NJ SNAP, Emergency Assistance, General Assistance, and Child Support Services. When possible, information is provided separately for children and adults. Many tables also provide trend data with information broken down by county for readers to consider. This report is compiled and prepared by The Bureau of Research & Reporting.

WFNJ/TANF

- As of the end of October, the TANF caseload had decreased by 1,874 cases, from 11,191 in October 2020 to 9,317 in October 2021; a decrease of -16.7%.
- The counties with caseloads that increased the most since October 2020 was Morris (2.5%).
- The counties with caseloads that decreased the most since October 2020 were Essex (-31.9%), Sussex (-29.6%), and Warren (-29.1%).
- Of the WFNJ/TANF cases, 2,921 or 31.4% were child-only in October 2021.
- The counties with the most child-only cases were Camden (507), Hudson (336), and Essex (333).
- Hudson (3,596), Camden (3,366), and Essex (3,075) counties had the greatest number of persons receiving TANF in October 2021.

NJ SNAP (Formerly FOOD STAMPS)

- In October 2021, there were 461,961 households receiving NJ SNAP benefits. The number of NJ SNAP households increased by 57,640 or 14.3%, since October 2020.
- There were 891,340 persons receiving NJ SNAP benefits as of October 2021; an increase of 103,362 or 13.1% since October 2020.
- The counties having the highest caseload increase since October 2020 were Essex (23.8%), Atlantic (19.7%), and Union (17.9%).

EMERGENCY ASSISTANCE

- There were 1,313 TANF families receiving Emergency Assistance (EA) in October 2021; a decrease of 245 or -15.7% since October 2020.
- In October 2021, EA payments were made for 580 SSI recipients.

DIVISION OF FAMILY DEVELOPMENT CURRENT PROGRAM STATISTICS OCTOBER 2021

- There were 1,818 GA cases with Emergency Assistance payments in October 2021; a decrease of 144 or -7.3% since October 2020.
- The counties that showed the highest percent increase in Emergency Assistance payments were Salem (150%), Monmouth (125.6%), and Hudson (104.9%).
- The counties that showed the highest percent decrease in Emergency Assistance payments were Cumberland (-81.8%), Cape May (-50.7%), and Somerset (-40.2%).

GENERAL ASSISTANCE

- The total numbers of cases receiving GA has increased from 13,144 to 13,184 since October 2020; an increase of 0.3%.
- There were 9,309 Employable GA and 3,875 Unemployable GA cases in October 2021.
- The counties that showed a percent increase for GA cases were Atlantic (17.8%), Hudson (15.9%), and Monmouth (13.9%) since October 2020.
- The counties that showed the highest percent decrease for GA cases since October 2020 were Sussex (-34.9%), Cape May (-29.1%), and Gloucester (-29%).
- In October 2021, GA cases showed a 1.7% increase since September 2021.

CHILD SUPPORT SERVICES (QUARTERLY REPORT)

- The total collection for the Child Support Services Program was about \$295 million from July 2021 to September 2021; a decrease of -2.5% over the same period from FFY 2020.
- Total distributions decreased -3.1% from September 2020.

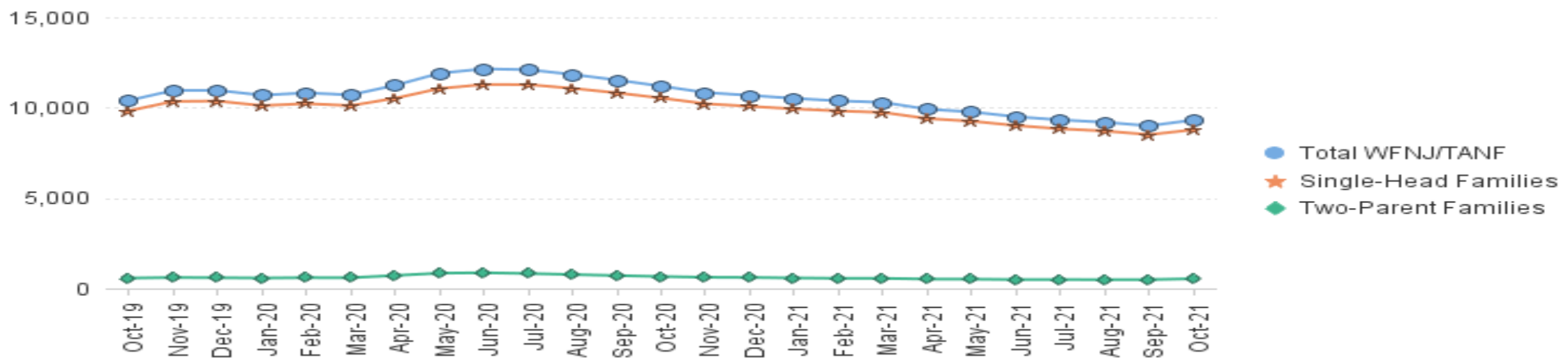
WORK FIRST NEW JERSEY (WFNJ)

- During the report month of October 2021, there were 272 families in which at least one member was employed and an additional 78 families whose WFNJ assistance cases were closed due to employment - related earnings.
- The three counties with the greatest number of employed active WFNJ recipients were: Hudson (46), Essex (42), and Atlantic (28).
- There were 256 former TANF cases receiving post-TANF support in the form of child care assist

TABLE 1:
WFNJ/TANF PROGRAM
STATEWIDE NUMBER OF APPLICATIONS AND TERMINATIONS DURING OCTOBER 2021
NUMBER OF ELIGIBLE FAMILIES & PERSONS RECEIVING WFNJ/TANF FOR OCTOBER 2021

OCTOBER 2019 THROUGH OCTOBER 2021												
		Cases Added	Cases Closed	Child-Only Cases ‡	Total Single-Head Families	2-Parent Families	Total WFNJ/TANF Families	%CHNG (1 Yr.)	Total Persons	%CHNG (1 Yr.)	Adults	Children
2019	OCT	1,209	1,111	3,544	9,828	572	10,400	-16.5%	26,156	-15.8%	7,428	18,728
	NOV	1,181	1,159	3,664	10,348	605	10,953	-11.1%	27,644	-10.1%	7,894	19,750
	DEC	1,053	1,042	3,689	10,364	593	10,957	-9.5%	27,766	-8.4%	7,861	19,905
2019 Average		1,050	1,208	3,794	10,298	595	10,893		27,198		7,694	19,504
2020	JAN	921	1,183	3,646	10,113	576	10,689	-8.3%	27,129	-6.5%	7,619	19,510
	FEB	1,066	1,007	3,669	10,222	596	10,818	-3.1%	27,517	-1.1%	7,745	19,772
	MAR	915	1,024	3,612	10,113	592	10,705	-3.7%	27,196	-1.5%	7,685	19,511
	APR	1,179	712	3,621	10,519	716	11,235	3.7%	28,765	6.7%	8,330	20,435
	MAY	832	232	3,696	11,057	845	11,902	10.2%	30,734	14.4%	9,051	21,683
	JUN	539	278	3,722	11,281	866	12,147	12.9%	31,370	17.6%	9,291	22,079
	JUL	458	526	3,686	11,274	826	12,100	14.2%	31,216	18.6%	9,240	21,976
	AUG	410	660	3,665	11,070	768	11,838	10.2%	30,454	13.9%	8,941	21,513
	SEP	475	796	3,603	10,817	711	11,528	7.3%	29,531	10.2%	8,636	20,895
	OCT	534	904	3,564	10,532	659	11,191	7.6%	28,657	9.6%	8,286	20,371
	NOV	419	767	3,470	10,218	617	10,835	-1.1%	27,738	0.3%	7,982	19,756
	DEC	434	595	3,410	10,071	607	10,678	-2.5%	27,371	-1.4%	7,875	19,496
2020 Average		682	724	3,614	10,607	698	11,306		28,973		8,390	20,583
2021	JAN	400	585	3,379	9,932	580	10,512	-1.7%	26,960	-0.6%	7,713	19,247
	FEB	378	504	3,347	9,818	559	10,377	-4.1%	26,520	-3.6%	7,589	18,931
	MAR	397	481	3,311	9,735	557	10,292	-3.9%	26,335	-3.2%	7,538	18,797
	APR	298	704	3,224	9,395	518	9,913	-11.8%	25,276	-12.1%	7,207	18,069
	MAY	264	510	3,209	9,250	513	9,763	-18.0%	24,858	-19.1%	7,067	17,791
	JUN	373	636	3,141	9,008	489	9,497	-21.8%	24,146	-23.0%	6,845	17,301
	JUL	391	590	3,068	8,829	493	9,322	-23.0%	23,785	-23.8%	6,747	17,038
	AUG	415	544	3,029	8,709	482	9,191	-22.4%	23,445	-23.0%	6,644	16,801
	SEP	388	588	2,945	8,507	489	8,996	-22.0%	23,009	-22.1%	6,540	16,469
	OCT	833	564	2,921	8,779	538	9,317	-16.7%	23,888	-16.6%	6,934	16,954
2021 Average to date		414	571	3,157	9,196	522	9,718		24,822		7,082	17,740

NJ STATEWIDE
Eligible Families Receiving WFNJ/TANF
OCTOBER 2019 THROUGH OCTOBER 2021



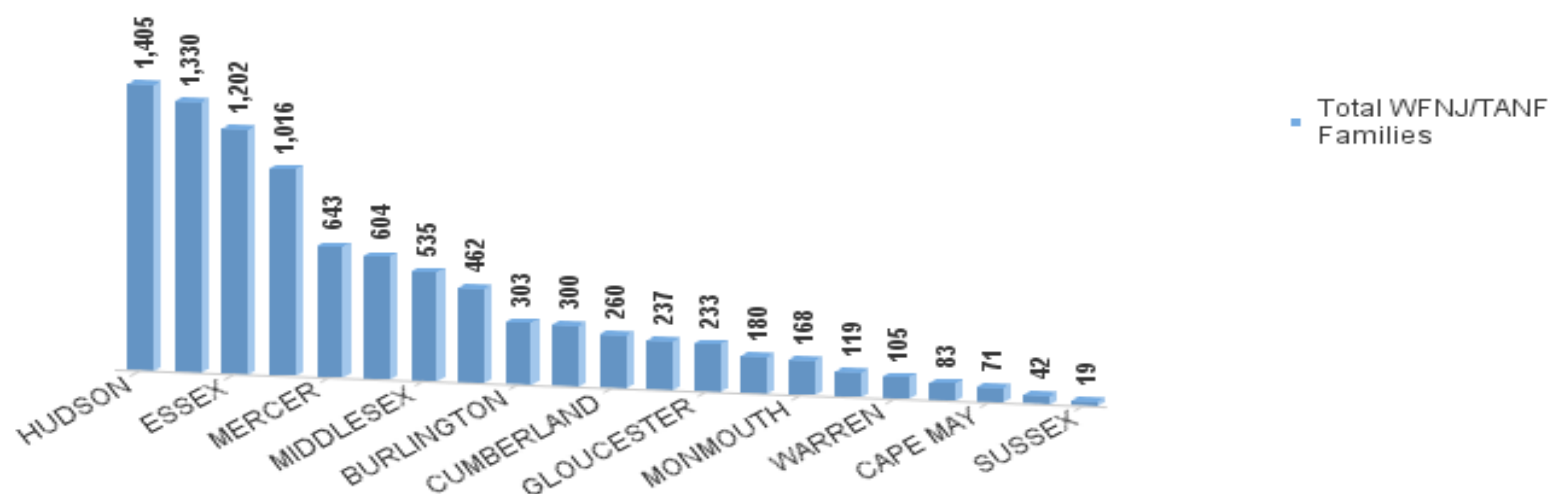
Data is derived from NJ MMIS Shared Data Warehouse Issuance files.
 Effective July 2013 this data query source was converted to the SDW

‡ Child-only cases are defined as families in which no eligible adult receives TANF program benefits, yet the family continues to be headed by at least one of the biological parents, or grandparents, or other appropriate adult.

TABLE 2:
WFNJ/TANF PROGRAM **NUMBER OF APPLICATIONS AND TERMINATIONS BY COUNTY DURING OCTOBER 2021**
NUMBER OF ELIGIBLE FAMILIES RECEIVING WFNJ/TANF FOR OCTOBER 2021

County	Cases Added	Cases Closed **	Child-Only Cases ‡	1-Adult Cases	Total Single-Head Families	2-Parent Families	Total WFNJ/TANF Families	%CHNG (3 Mon)	%CHNG (1 Yr.)
ATLANTIC	50	26	244	331	575	29	604	-1.8%	-14.1%
BERGEN	23	14	54	168	222	15	237	2.6%	-9.5%
BURLINGTON	25	14	111	178	289	14	303	0.3%	-25.4%
CAMDEN	116	45	507	759	1,266	64	1,330	5.9%	-6.8%
CAPE MAY	10	2	29	39	68	3	71	4.4%	-27.6%
CUMBERLAND	24	19	111	136	247	13	260	2.4%	-21.9%
ESSEX	97	147	333	822	1,155	47	1,202	-10.4%	-31.9% *
GLOUCESTER	21	10	88	137	225	8	233	4.5%	-20.2%
HUDSON	172	108	336	972	1,308	97	1,405	5.3%	-20.5%
HUNTERDON	0	2	8	29	37	5	42	0.0%	0.0% Δ
MERCER	41	16	210	407	617	26	643	4.0%	-9.9%
MIDDLESEX	45	32	189	321	510	25	535	3.7%	-1.3% Δ
MONMOUTH	15	12	60	103	163	5	168	3.1%	-22.6%
MORRIS	12	6	21	48	69	14	83	10.7%	2.5% Δ
OCEAN	22	17	72	218	290	10	300	-1.6%	-12.3%
PASSAIC	65	38	305	660	965	51	1,016	2.0%	-10.5%
SALEM	14	11	34	75	109	10	119	1.7%	-9.2%
SOMERSET	21	8	48	121	169	11	180	9.1%	-16.7%
SUSSEX	3	3	7	10	17	2	19	-5.0%	-29.6% *
UNION	45	21	127	257	384	78	462	6.9%	-14.6%
WARREN	12	13	27	67	94	11	105	-10.3%	-29.1% *
NJ Total	833	564	2,921	5,858	8,779	538	9,317	1.4%	-16.7%

**Total WFNJ/TANF Families
 OCTOBER 2021
 By County**



Data is derived from NJ MMIS Shared Data Warehouse Issuance files.
 Effective July 2013 this data query source was converted to the SDW

‡ Child-only cases are defined as families in which no eligible adult receives TANF program benefits, yet the family continues to be headed by at least one of the biological parents, or grandparents, or other appropriate adult

** 'Cases closed' include cases that received a benefit in the prior month, but did not receive any TANF benefit for the report month.

Δ=higher caseload % change

*=lower caseload % change

TABLE 2B :

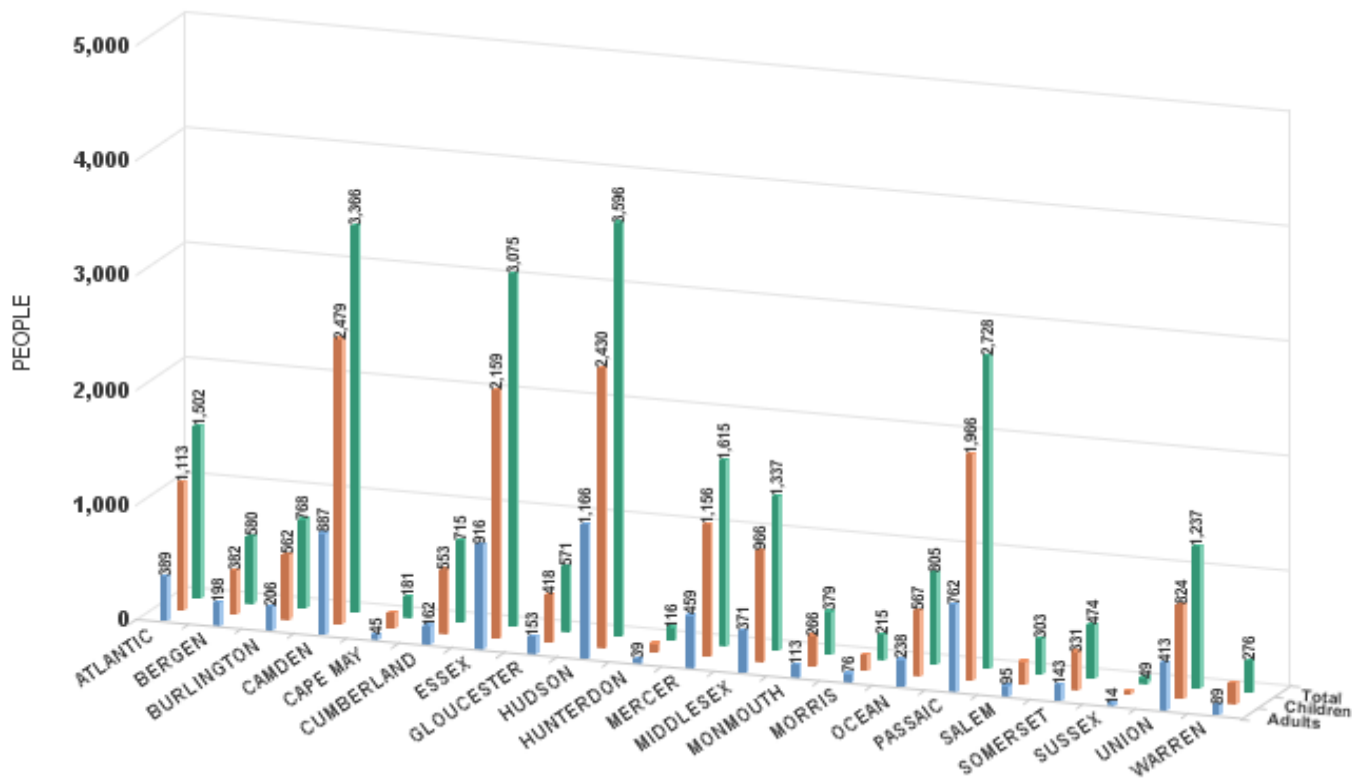
WFNJ/TANF PROGRAM NUMBER OF PARTICIPATING PERSONS, ADULTS, AND CHILDREN BY COUNTY FOR OCTOBER 2021

PERSONS

County	Adults	Children	Child/Adult Ratio	Total Persons	% Chng (1 Yr)	Persons Per Case
ATLANTIC	389	1,113	2.86	1,502	-15.5%	2.49
BERGEN	198	382	1.93	580	-11.7%	2.45
BURLINGTON	206	562	2.73	768	-25.8%	2.53
CAMDEN	887	2,479	2.79	3,366	-7.1%	2.53
CAPE MAY	45	136	3.02	181	-25.8%	2.55
CUMBERLAND	162	553	3.41	715	-20.7%	2.75
ESSEX	916	2,159	2.36	3,075	-33.4%	* 2.56
GLOUCESTER	153	418	2.73	571	-16.8%	2.45
HUDSON	1,166	2,430	2.08	3,596	-19.5%	2.56
HUNTERDON	39	77	1.97	116	6.4%	Δ 2.76
MERCER	459	1,156	2.52	1,615	-10.0%	2.51
MIDDLESEX	371	966	2.60	1,337	-0.4%	Δ 2.50
MONMOUTH	113	266	2.35	379	-23.7%	2.26
MORRIS	76	139	1.83	215	7.0%	Δ 2.59
OCEAN	238	567	2.38	805	-11.0%	2.68
PASSAIC	762	1,966	2.58	2,728	-9.7%	2.69
SALEM	95	208	2.19	303	-9.8%	2.55
SOMERSET	143	331	2.31	474	-16.8%	2.63
SUSSEX	14	35	2.50	49	-31.0%	* 2.58
UNION	413	824	2.00	1,237	-11.9%	2.68
WARREN	89	187	2.10	276	-29.6%	* 2.63
NJ Total	6,934	16,954	2.45	23,888	-16.6%	2.56

Δ=higher caseload % change

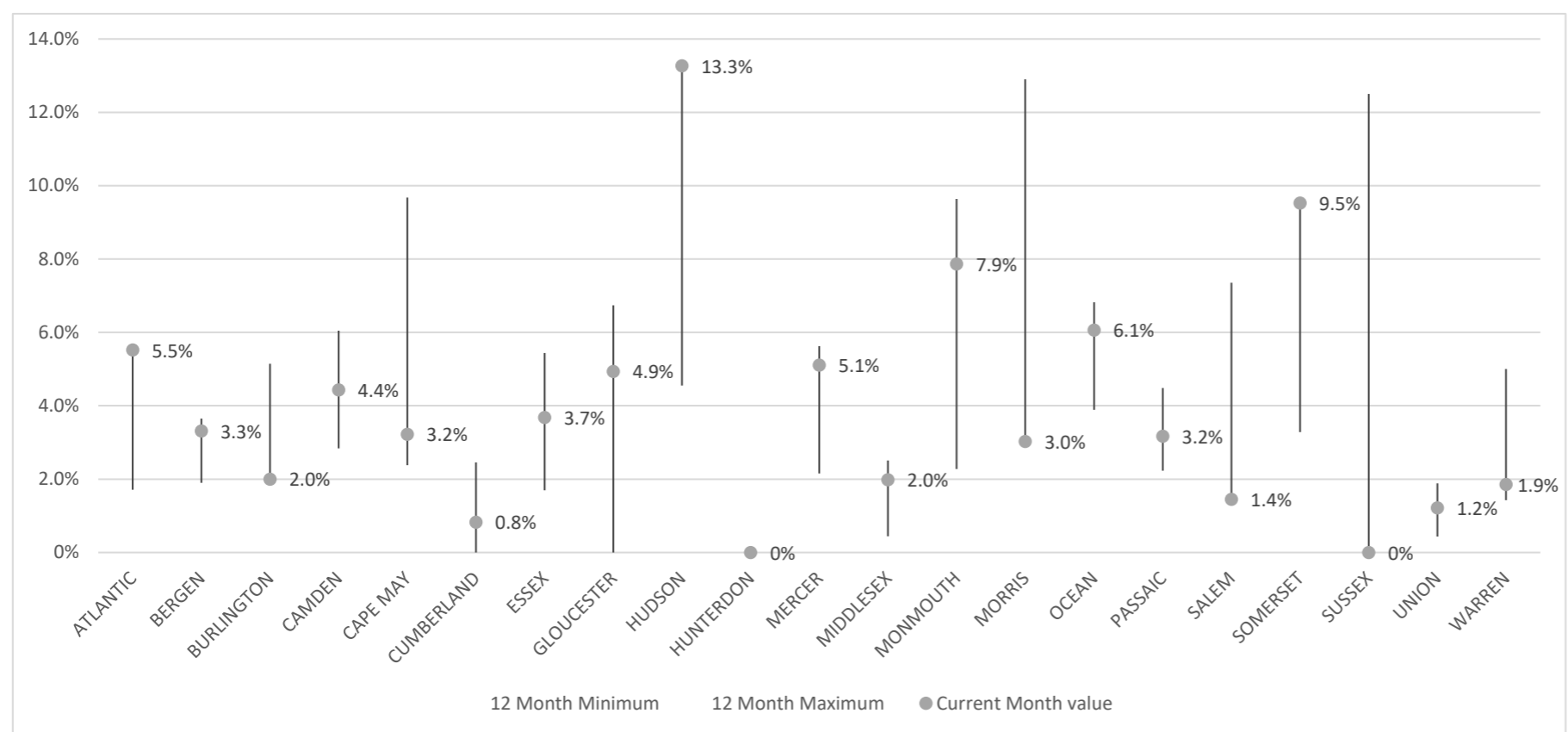
*=lower caseload % change



Data is derived from NJ MMIS Shared Data Warehouse Issuance files. Effective July 2013 this data query source was converted to the SDW

TABLE 3 :

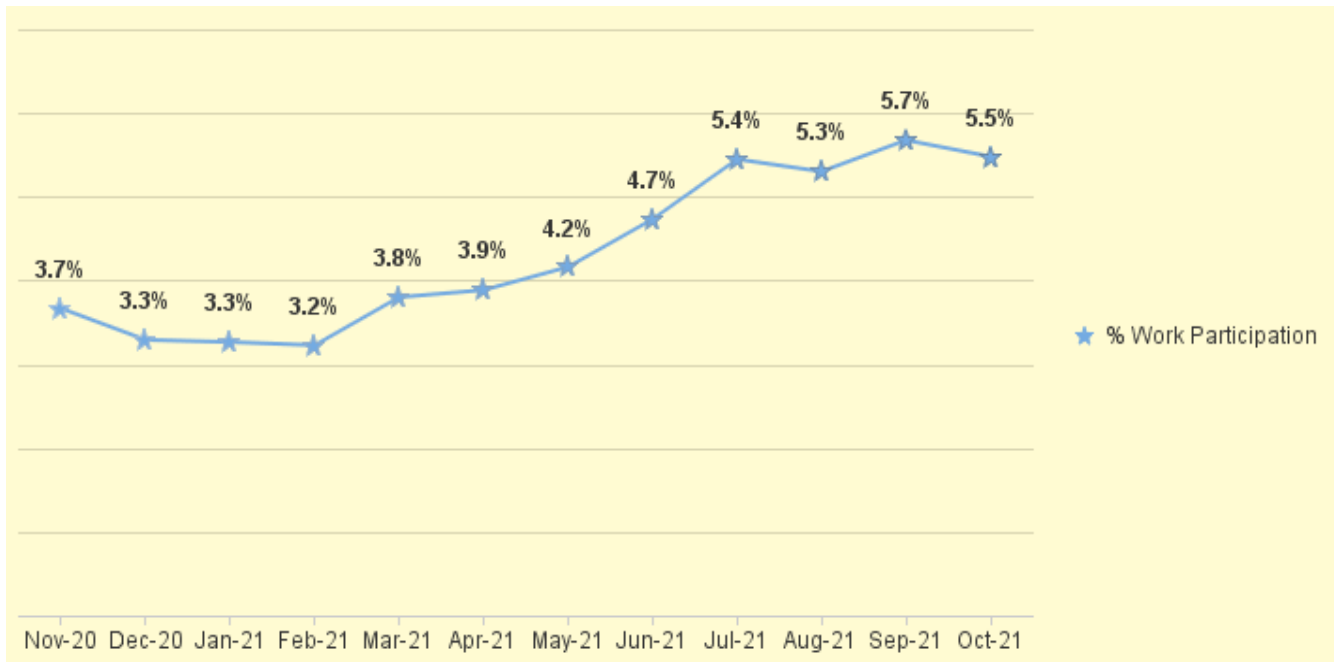
Work Participation Rates Achieved Over 12 Month Period
Ending with OCTOBER 2021



Data is derived from NJ MMIS Shared Data Warehouse Issuance files.
Effective July 2013 this data query source was converted to the SDW

TABLE 4 :

WFNJ/TANF Work Participation Rates
for 12-Month Period Ending with OCTOBER 2021 Statewide



* The Work Participation rate measures the number of countable Temporary Assistance for Needs Families (TANF) participants based on federal formula. The reported rate is considered to be preliminary until officially calculated by the federal government soon after the close of each federal fiscal year.

TABLE 5 :
NJ SNAP
(FOOD STAMPS) **NUMBER OF PARTICIPATING HOUSEHOLDS, PERSONS, ADULTS**
AND CHILDREN FOR OCTOBER 2021 (STATEWIDE)

		HOUSEHOLDS				PERSONS					
		WFNJ/ TANF	Other low income	Total	% CHNG (1 YR)	Adults	Children	TOTAL	% CHNG (1 YR)	Age 60+	People with a disability
2019	OCT	10,614	332,677	343,291	-5.4%	365,642	312,275	677,917	-6.1%	119,254	200,853
	NOV	10,580	331,660	342,240	-5.1%	364,880	310,523	675,403	-5.8%	119,560	202,867
	DEC	10,445	330,157	340,602	-4.9%	362,992	308,279	671,271	-5.8%	119,046	205,081
2019	Average	10,344	335,093	345,437		366,571	316,091	682,661		121,550	203,671
2020	JAN	10,201	325,866	336,067	-6.3%	358,028	301,901	659,929	-7.4%	117,898	201,955
	FEB	10,245	326,468	336,713	0.4%	358,670	302,524	661,194	0.5%	117,775	201,863
	MAR	10,328	324,689	335,017	-4.8%	357,989	299,375	657,364	-5.8%	117,369	201,521
	APR	11,112	337,037	348,149	0.3%	373,744	309,095	682,839	-0.6%	118,173	204,375
	MAY	11,513	353,998	365,511	5.2%	394,281	323,636	717,917	4.4%	119,744	208,152
	JUN	11,522	358,302	369,824	6.7%	398,959	326,357	725,316	5.9%	120,137	209,224
	JUL	11,336	364,797	376,133	9.4%	405,652	329,166	734,818	8.1%	120,881	211,115
	AUG	11,044	373,293	384,337	10.8%	414,644	333,705	748,349	9.0%	118,173	204,375
	SEP	10,928	384,063	394,991	15.7%	426,710	342,621	769,331	14.1%	122,341	214,255
	OCT	10,605	393,716	404,321	17.8%	437,538	350,440	787,978	16.2%	123,068	216,012
	NOV	10,335	395,876	406,211	18.7%	440,136	350,631	790,767	17.1%	123,104	216,208
	DEC	10,308	401,212	411,520	20.8%	446,083	354,408	800,491	19.3%	123,498	221,131
2020	Average	10,790	361,610	372,400		401,036	326,988	728,024		120,180	209,182
2021	JAN	10,214	409,050	419,264	24.8%	454,910	360,490	815,400	23.6%	123,751	221,129
	FEB	9,980	413,080	423,060	25.6%	459,801	362,760	822,561	24.4%	123,888	221,585
	MAR	9,632	418,259	427,891	27.7%	465,302	366,223	831,525	26.5%	124,614	222,961
	APR	9,474	423,186	432,660	24.3%	470,412	369,625	840,037	23.0%	125,182	224,256
	MAY	9,371	428,961	438,332	19.9%	476,827	373,151	849,978	18.4%	125,750	225,339
	JUN	9,833	440,525	450,358	21.8%	490,430	393,310	883,740	21.8%	126,085	227,479
	JUL	9,067	437,889	446,956	18.8%	485,975	379,528	865,503	17.8%	126,552	227,352
	AUG	9,070	442,333	451,403	17.4%	490,577	383,106	873,683	16.7%	127,091	228,513
	SEP	9,561	447,902	457,463	15.8%	497,122	390,345	887,467	15.4%	127,550	229,863
	OCT	9,822	452,139	461,961	14.3%	502,415	388,925	891,340	13.1%	128,700	231,751
2021	Average to date	9,602	431,332	440,935		479,377	376,746	856,123		125,916	226,023

This Table is based on those Households & Persons that recived SNAP issuances (benefits) during the month

Data is derived from NJ MMIS Shared Data Warehouse.

Effective July 2013 this data query source was converted to the SDW.

* Age 60+ and People with a disability columns are independent subsets of total persons. An individual might appear in both columns

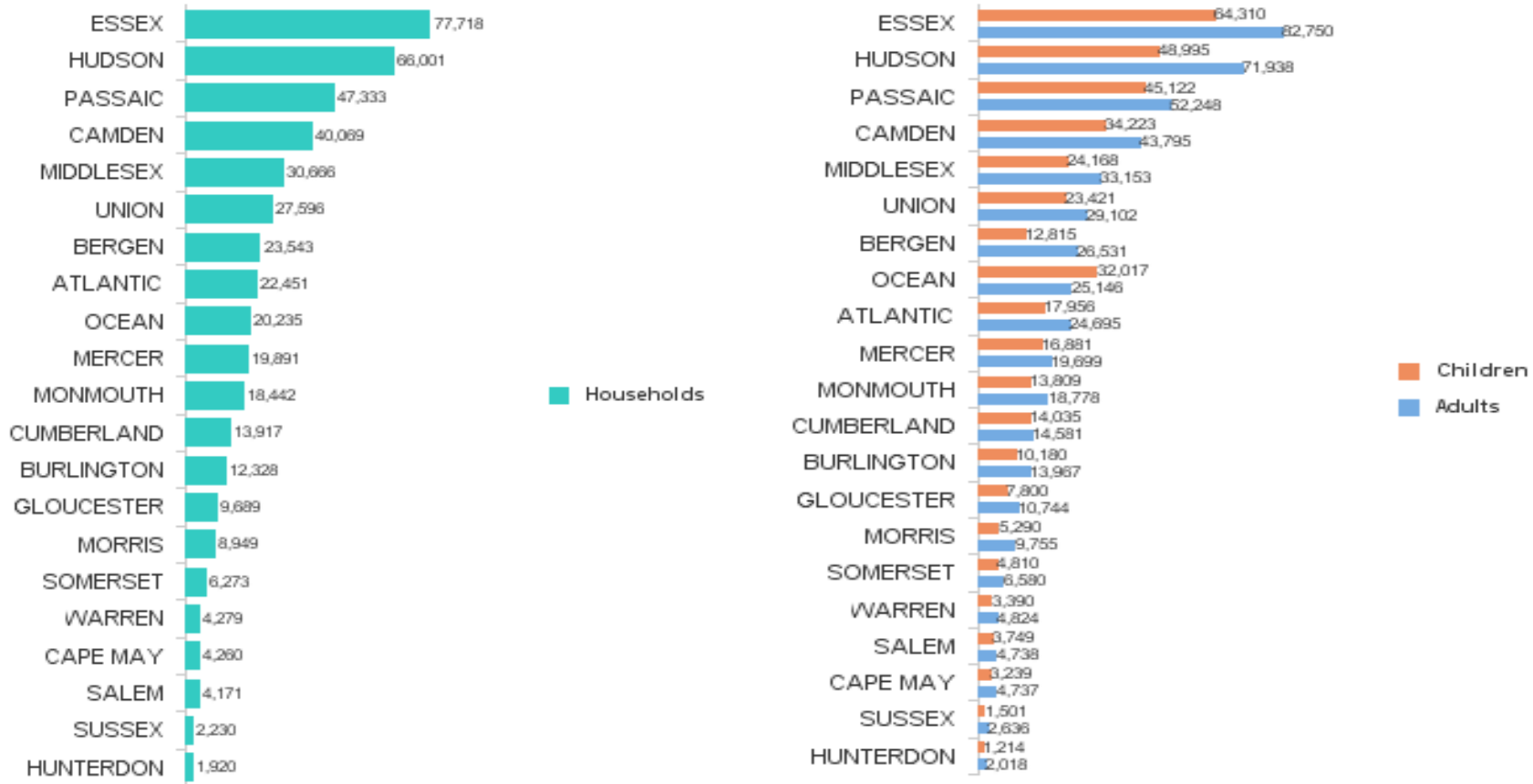
TABLE 7 :
NJ SNAP
NUMBER OF PARTICIPATING HOUSEHOLDS, PERSONS, ADULTS
AND CHILDREN BY COUNTY FOR OCTOBER 2021

County	HOUSEHOLDS				PERSONS				Age 60+	People with a disability
	WFNJ/TANF	Other low income	TOTAL	% Chng (1 Yr)	Adults	Children	TOTAL	% Chng (1 Yr)		
ATLANTIC	602	21,849	22,451	19.7% Δ	24,695	17,956	42,651	19.0% Δ	5,171	11,078
BERGEN	266	23,277	23,543	14.4%	26,531	12,815	39,346	15.8%	12,428	16,012
BURLINGTON	334	11,994	12,328	12.9%	13,967	10,180	24,147	13.3%	2,928	7,069
CAMDEN	1,311	38,758	40,069	12.3%	43,795	34,223	78,018	10.4%	8,127	20,032
CAPE MAY	88	4,172	4,260	5.9%	4,737	3,239	7,976	6.6%	990	2,311
CUMBERLAN	260	13,657	13,917	10.9%	14,581	14,035	28,616	10.0%	2,762	7,273
ESSEX	1,526	76,192	77,718	23.8% Δ	82,750	64,310	147,060	20.2% Δ	16,316	32,306
GLOUCESTER	228	9,461	9,689	9.2%	10,744	7,800	18,544	9.0%	2,276	6,197
HUDSON	1,415	64,586	66,001	14.7%	71,938	48,995	120,933	11.5%	19,493	29,671
HUNTERDON	48	1,872	1,920	9.5%	2,018	1,214	3,232	11.6%	563	1,056
MERCER	650	19,241	19,891	15.1%	19,699	16,881	36,580	14.0%	4,358	10,734
MIDDLESEX	577	30,089	30,666	10.8%	33,153	24,168	57,321	9.9%	12,160	17,581
MONMOUTH	185	18,257	18,442	12.7%	18,778	13,809	32,587	12.2%	5,603	10,265
MORRIS	100	8,849	8,949	14.7%	9,755	5,290	15,045	15.3%	4,184	5,514
OCEAN	315	19,920	20,235	15.1%	25,146	32,017	57,163	19.9% Δ	5,352	10,720
PASSAIC	1,039	46,294	47,333	5.5% *	52,248	45,122	97,370	5.2%	13,585	21,048
SALEM	128	4,043	4,171	3.2% *	4,738	3,749	8,487	3.0% *	844	2,333
SOMERSET	179	6,094	6,273	12.2%	6,580	4,810	11,390	12.1%	2,142	3,563
SUSSEX	26	2,204	2,230	-0.3% *	2,636	1,501	4,137	0.7% *	706	1,569
UNION	438	27,158	27,596	17.9% Δ	29,102	23,421	52,523	16.5%	7,686	12,931
WARREN	107	4,172	4,279	6.0%	4,824	3,390	8,214	4.6% *	1,026	2,488
NJ TOTAL	9,822	452,139	461,961	14.3%	502,415	388,925	891,340	13.1%	128,700	231,751

Δ=higher caseload % change

*=lower caseload % change

Total NJ SNAP Recipients
OCTOBER 2021 by County



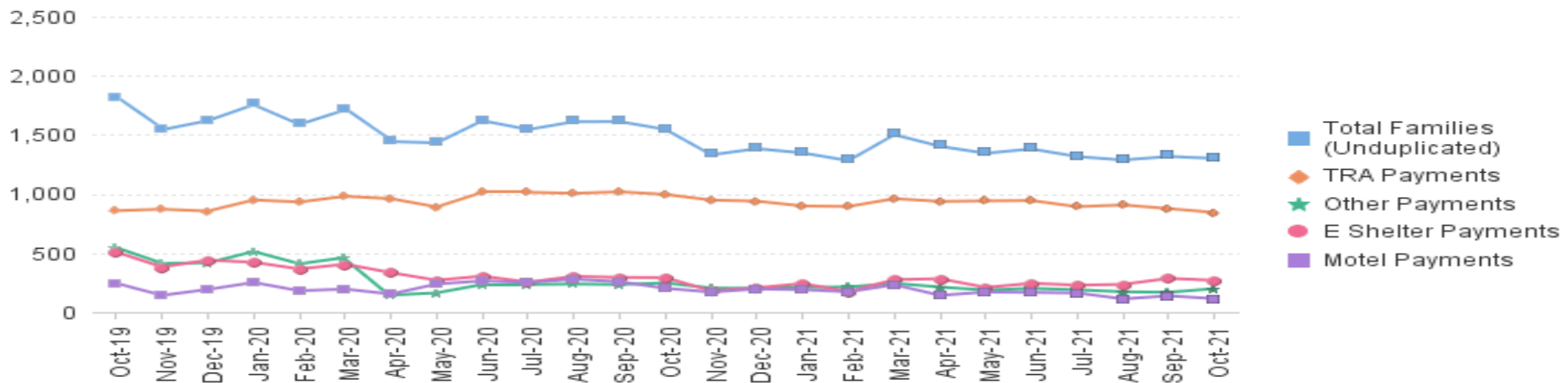
Data is derived from NJ MMIS Shared Data Warehouse.
 Effective July 2013 this data query source was converted to the SDW.

* Age 60+ and People with a disability columns are independent subsets of total persons. An individual might appear in both columns

**TABLE 8 :
EMERGENCY ASSISTANCE (STATEWIDE)
TOTAL NUMBER OF ELIGIBLE FAMILIES RECEIVING EMERGENCY ASSISTANCE PAYMENTS
OCTOBER 2019 THROUGH OCTOBER 2021 - STATEWIDE**

		Total WFNJ/EA Families (Undupl)		Temp Rent Asst. Payments (Undupl)		Motel Housing Payments (Undupl)		Shelter/Transitional Housing Payments (Undupl)		Other WFNJ/EA Payments (Undupl)	
			% CHNG (1 YR)		% CHNG (1 YR)		% CHNG (1 YR)		% CHNG (1 YR)		% CHNG (1 YR)
2019	OCT	1,823	12.4%	858	5.4%	244	28.4%	508	17.6%	546	16.2%
	NOV	1,555	-3.7%	871	2.2%	142	-11.3%	382	-16.2%	413	-1.0%
	DEC	1,632	0.7%	855	6.2%	192	-14.3%	440	-0.9%	417	-1.9%
2019 Average		1,578		826		164		427		437	
2020	JAN	1,767	15.7%	949	13.8%	251	59.9%	422	16.9%	513	2.6%
	FEB	1,600	15.1%	932	23.6%	181	20.7%	365	24.6%	409	-4.7%
	MAR	1,723	14.5%	980	16.3%	195	62.5%	406	-3.1%	462	19.4%
	APR	1,455	-5.9%	960	18.4%	153	-12.1%	334	-23.9%	144	-64.0%
	MAY	1,444	-9.1%	890	7.9%	238	63.0%	270	-41.0%	163	-63.5%
	JUN	1,632	5.9%	1,014	23.8%	265	61.6%	305	-28.6%	234	-43.3%
	JUL	1,557	3.0%	1,014	33.2%	251	88.7%	254	-43.3%	234	-42.2%
	AUG	1,623	-3.0%	1,005	18.0%	279	75.5%	303	-40.9%	238	-46.3%
	SEP	1,624	-1.0%	1,018	22.1%	258	41.0%	294	-32.1%	234	-47.9%
	OCT	1,558	-14.5%	996	16.1%	201	-17.6%	292	-42.5%	247	-54.8%
	NOV	1,343	-13.6%	948	8.8%	170	19.7%	180	-52.9%	204	-50.6%
	DEC	1,395	-14.5%	939	9.8%	196	2.1%	206	-53.2%	201	-51.8%
2020 Average		1,560		970		220		303		274	
2021	JAN	1,359	-23.1%	898	-5.4%	190	-24.3%	242	-42.7%	210	-59.1%
	FEB	1,294	-19.1%	894	-4.1%	172	-5.0%	174	-52.3%	213	-47.9%
	MAR	1,513	-12.2%	960	-2.0%	232	19.0%	275	-32.3%	244	-47.2%
	APR	1,415	-2.7%	937	-2.4%	142	-7.2%	283	-15.3%	212	47.2%
	MAY	1,356	-6.1%	941	5.7%	170	-28.6%	209	-22.6%	187	14.7%
	JUN	1,393	-14.6%	944	-6.9%	167	-37.0%	244	-20.0%	201	-14.1%
	JUL	1,328	-14.7%	892	-12.0%	162	-35.5%	228	-10.2%	189	-19.2%
	AUG	1,299	-20.0%	907	-9.8%	112	-59.9%	235	-22.4%	172	-27.7%
	SEP	1,329	-18.2%	876	-13.9%	138	-46.5%	286	-2.7%	168	-28.2%
	OCT	1,313	-15.7%	843	-15.4%	114	-43.3%	269	-7.9%	199	-19.4%
2021 Average to date		1,360		909		160		245		200	

**NJ STATEWIDE
Families Receiving Emergency Assistance
OCTOBER 2019 THROUGH OCTOBER 2021**



WFNJ/EA data is derived from NJ MMIS Shared Data Warehouse.

Effective July 2013 this data query source was converted to the SDW.

* Effective Feb '11 Transitional Housing Payments were removed from 'Other EA Payments' and added to 'Shelter Payments'.

TABLE 9 : EMERGENCY ASSISTANCE (BY COUNTY) TOTAL NUMBER OF ELIGIBLE FAMILIES RECEIVING EMERGENCY ASSISTANCE PAYMENTS BY COUNTY (UNDUPLICATED CASES) FOR OCTOBER 2021

County	TOTAL WFNJ/EA Families (Undupl)	% CHNG From OCT 20	Temp Rent Asst. Payments (Undupl)	Motel Housing Payments (Undupl)	Shelter/Transitional Housing Payments (Undupl)	Other WFNJ/EA Payments (Undupl)	SSI Receipts Receiving EA **
ATLANTIC	47	-39.0%	37	2	0	11	45
BERGEN	43	-38.6%	30	2	8	4	48
BURLINGTON	43	-37.7%	6	2	36	0	15
CAMDEN	39	-36.1%	17	5	19	1	43
CAPE MAY	13	-40.9%	6	7	0	1	12
CUMBERLAND	0	0%	0	0	0	0	0
ESSEX	164	21.5% Δ	48	0	100	21	12
GLOUCESTER	11	-42.1%	4	0	4	4	1
HUDSON	209	10.0% Δ	173	8	21	22	85
HUNTERDON	9	-10.0%	7	0	0	2	10
MERCER	94	-8.7%	62	24	0	18	60
MIDDLESEX	108	-19.4%	74	7	9	47	37
MONMOUTH	23	-8.0%	0	0	23	1	50
MORRIS	11	-54.2% *	9	1	0	2	15
OCEAN	85	-26.7%	67	13	0	15	13
PASSAIC	235	-14.5%	188	10	23	23	27
SALEM	3	200.0% Δ	1	1	0	1	1
SOMERSET	67	-18.3%	55	6	5	15	56
SUSSEX	1	-66.7% *	0	0	1	0	1
UNION	98	-14.0%	53	23	20	9	48
WARREN	10	-61.5% *	6	3	0	2	1
NJ Total	1,313	-15.7%	843	114	269	199	580

Δ=higher caseload % change

*=lower caseload % change

** SSI-EA includes pay codes 22 and 24, data is derived from NJ Division of Family Development FAMIS Report #FM430-03A

WFNJ/EA data is derived from NJ MMIS Shared Data Warehouse.

Effective July 2013 this data query source was converted to the SDW.

Number WFNJ Families Receiving EA by County OCTOBER 2021

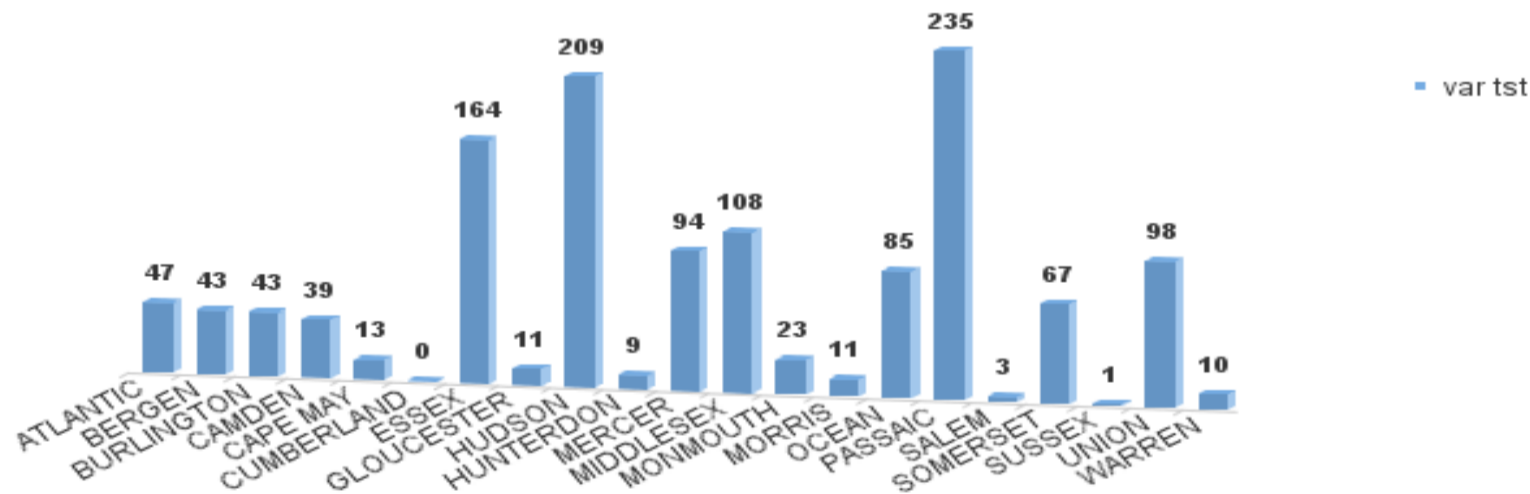
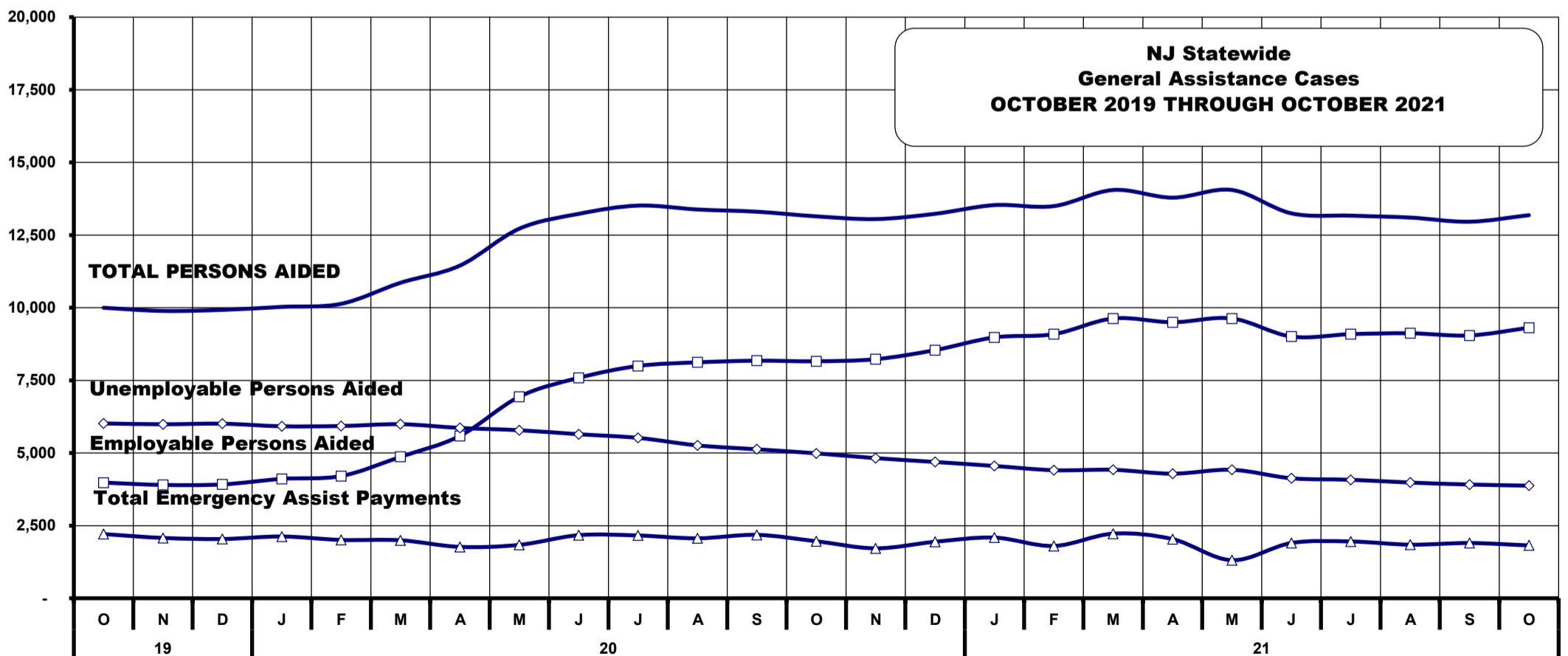


TABLE 10: GENERAL ASSISTANCE PROGRAM
NUMBER OF EMPLOYABLE AND UNEMPLOYABLE RECIPIENTS AND EMERGENCY ASSISTANCE PAYMENTS - STATEWIDE
OCTOBER 2019 THROUGH OCTOBER 2021

	Total Cases						Emergency Assistance Cases			
	Employable	% Chng (1 Yr)	Unemployable	% Chng (1 Yr)	Total	% Chng (1 Yr)	Temporary Rental Assistance	Other GA-EA	Total	% Chng (1 Yr)
2019										
OCT	3,980	-11.1%	6,017	-11.8%	9,997	-11.5%	890	1,319	2,209	11.1%
NOV	3,900	-9.6%	5,988	-9.9%	9,888	-9.8%	878	1,198	2,076	8.1%
DEC	3,918	-4.7%	6,008	-8.3%	9,925	-6.9%	900	1,139	2,039	8.5%
2019 AVERAGE	4,124		6,182		10,306		898	1,223	2,121	
2020										
JAN	4,109	-2.5%	5,919	-8.3%	10,028	-6.0%	910	1,216	2,126	11.7%
FEB	4,206	0.1%	5,928	-6.0%	10,134	-3.6%	875	1,132	2,007	5.7%
MAR	4,868	15.5%	5,990	-4.5%	10,858	3.5%	919	1,077	1,996	0.8%
APR	5,587	32.2%	5,862	-6.2%	11,449	9.3%	913	855	1,768	-18.3%
MAY	6,936	66.9%	5,783	-6.9%	12,719	22.7%	929	909	1,838	-35.4%
JUN	7,585	87.4%	5,645	-8.2%	13,230	29.8%	916	1,255	2,171	4.1%
JUL	7,994	97.4%	5,520	-9.2%	13,514	33.4%	905	1,256	2,161	8.4%
AUG	8,119	86.7%	5,261	-16.0%	13,380	26.1%	875	1,188	2,063	-1.5%
SEP	8,176	93.4%	5,127	-17.2%	13,303	27.7%	849	1,333	2,182	1.1%
OCT	8,156	104.9%	4,988	-17.1%	13,144	31.5%	855	1,107	1,962	-11.2%
NOV	8,228	111.0%	4,822	-19.5%	13,050	32.0%	835	884	1,719	-17.2%
DEC	8,540	118.0%	4,691	-21.9%	13,231	33.3%	833	1,111	1,944	-4.7%
2020 AVERAGE	6,875		5,461		12,337		885	1,110	1,995	
2021										
JAN	8,978	118.5%	4,553	-23.1%	13,531	34.9%	848	1,240	2,088	-1.8%
FEB	9,089	116.1%	4,407	-25.7%	13,496	33.2%	809	991	1,800	-10.3%
MAR	9,630	97.8%	4,421	-26.2%	14,051	29.4%	819	1,405	2,224	11.4%
APR	9,499	70.0%	4,288	-26.9%	13,787	20.4%	832	1,204	2,036	15.2%
MAY	9,630	38.8%	4,421	-23.6%	14,051	10.5%	819	491	1,310	-28.7%
JUN	9,007	18.7%	4,130	-32.8%	13,247	0.1%	794	1,108	1,902	-12.4%
JUL	9,090	13.7%	4,078	-26.1%	13,168	-2.6%	833	1,121	1,954	-9.6%
AUG	9,120	12.3%	3,982	-24.3%	13,102	-2.1%	753	1,091	1,844	-10.6%
SEP	9,045	10.6%	3,914	-23.7%	12,959	-2.6%	787	1,114	1,901	-12.9%
OCT	9,309	14.1%	3,875	-22.3%	13,184	0.3%	757	1,061	1,818	-7.3%
2021 AVERAGE TO DATE	9,240		4,207		13,458		805	1,083	1,888	



Source: NJ Division of Family Development, GA Fiscal Unit

**TABLE 11:
GENERAL
ASSISTANCE
PROGRAM**

**EMPLOYABLE AND UNEMPLOYABLE CASES
AND EMERGENCY ASSISTANCE CASES RECEIVING PAYMENTS BY COUNTY
OCTOBER 2021**

	Total Cases						Emergency Assistance Cases				
	Employable	% Chng (1 Yr)	Unemployable	% Chng (1 Yr)	Total	% Chng (1 Yr)	Temporary Rental Assistance	Other GA-EA	Total	% Chng (1 Yr)	
ATLANTIC	842	34.1%	189	-23.5%	1,031	17.8%	Δ	65	19	84	-26.3%
BERGEN	309	-11.0%	178	-33.1%	487	-20.6%		76	31	107	-30.5%
BURLINGTON	332	12.5%	202	-25.5%	534	-5.7%		18	83	101	-1.0%
CAMDEN	1,410	36.6%	459	-26.1%	1,869	13.1%		47	82	129	-35.2%
CAPE MAY	77	-26.7%	40	-33.3%	117	-29.1%	*	15	20	35	-50.7%
CUMBERLAND	280	-0.4%	90	-31.8%	370	-10.4%		0	2	2	-81.8%
ESSEX	899	-7.0%	298	-32.6%	1,197	-15.0%		18	93	111	11.0%
GLOUCESTER	145	-28.6%	120	-29.4%	265	-29.0%	*	1	13	14	-6.7%
HUDSON	1,894	28.9%	480	-17.2%	2,374	15.9%	Δ	98	152	250	104.9%
HUNTERDON	107	50.7%	40	-45.2%	147	2.1%		13	25	38	46.2%
MERCER	412	16.7%	279	-22.7%	691	-3.2%		50	46	96	-25.6%
MIDDLESEX	451	5.9%	325	13.6%	776	9.0%		85	106	191	21.7%
MONMOUTH	227	36.7%	159	-8.1%	386	13.9%	Δ	1	87	88	125.6%
MORRIS	130	0.0%	152	2.0%	282	1.1%		48	11	59	-24.4%
OCEAN	323	-9.5%	217	-17.2%	540	-12.8%		57	51	108	-38.3%
PASSAIC	484	30.5%	310	-24.6%	794	1.5%		48	33	81	-16.5%
SALEM	127	-0.8%	32	-45.8%	159	-15.0%		1	4	5	150.0%
SOMERSET	136	-9.3%	57	-21.9%	193	-13.5%		42	16	58	-40.2%
SUSSEX	48	-30.4%	23	-42.5%	71	-34.9%	*	0	15	15	-40.0%
UNION	548	20.2%	143	-31.3%	691	4.1%		51	140	191	1.1%
WARREN	128	-15.8%	82	-21.2%	210	-18.0%		23	32	55	-8.3%
NJ TOTAL	9,309	14.1%	3,875	-22.3%	13,184	0.3%		757	1,061	1,818	-7.3%

Δ= ↑ Caseload %

* = ↓ Caseload %

Source: NJ Division of Family Development, GA Fiscal Unit

Source: NJ Division of Family Development, GA Fiscal Unit

**TABLE 12:
OFFICE OF
CHILD SUPPORT
SERVICES**

**OFFICE OF CHILD SUPPORT SERVICES
QUARTERLY PERFORMANCE REPORT
STATE SUMMARY
TITLE IV-D SOURCE COLLECTION REPORT**

Comparison of Quarter-4 (FFY 2020 vs. FFY 2021)

COLLECTION SOURCE	TOTAL 7/1/2020 - 9/30/2020	% OF TOTAL COLLECTIONS	TOTAL 7/1/2021 - 9/30/2021	% OF TOTAL COLLECTIONS	DOLLAR CHANGE	% CHANGE
FEDERAL TAX	\$11,055,867	3.66%	\$13,351,212	4.53%	\$ 2,295,345	20.76%
STATE TAX	\$1,658,040	0.55%	\$3,627,130	1.23%	\$ 1,969,090	118.76%
UIB	\$35,999,185	11.91%	\$28,215,807	9.58%	\$ (7,783,378)	-21.62%
INC WITHHOLD	\$190,408,068	63.02%	\$182,792,079	62.04%	\$ (7,615,989)	-4.00%
FROM OTHER STATES	\$12,577,981	4.16%	\$11,450,421	3.89%	\$ (1,127,560)	-8.96%
ADMIN ENFORCEMENT	\$1,532,534	0.51%	\$4,099,830	0.01	\$ 2,567,296	167.52%
OTHER	\$48,903,181	16.19%	\$51,080,910	17.34%	\$ 2,177,729	4.45%
TOTAL COLLECTIONS*	\$302,134,856	100%	\$294,617,389	100%	\$ (7,517,467)	-2.49%
DISBURSED COLLECTIONS**	\$266,129,047		\$257,920,003		\$ (8,209,044)	-3.08%

* Includes collections on both current support and arrears.

** Includes collections on both current support and arrears; also includes money sent to other states.

SOURCE: NJKiDS (Based on Federal Quarterly Report of Collections - OCSE-34A except Disbursed Collections)

Disbursed Collections obtained from Federal Data Report - OCSE-157, which is reported annually to Congress and used in the calculation of incentive dollars earned by each state.

**TABLE 13:
OFFICE OF
CHILD SUPPORT
SERVICES**

**OFFICE OF CHILD SUPPORT SERVICES
STATE SUMMARY
TITLE IV-D PATERNITY ESTABLISHMENT REPORT**

Comparison of October (FFY 2021 vs. FFY 2022)

County	OCTOBER 2020			OCTOBER 2021			Increase or Decrease (-) from FFY 2021 to FFY 2022
	Total Children Born Out of Wedlock*	Number of Paternities Established	Percent of Paternities Established	Total Children Born Out of Wedlock*	Number of Paternities Established	Percent of Paternities Established	
Atlantic	6,003	5,952	99.2%	5,563	5,533	99.5%	0.3%
Bergen	3,048	2,996	98.3%	2,748	2,697	98.1%	-0.1%
Burlington	4,677	4,556	97.4%	4,290	4,183	97.5%	0.1%
Camden	15,087	14,721	97.6%	14,008	13,692	97.7%	0.2%
Cape May	1,182	1,167	98.7%	1,071	1,057	98.7%	0.0%
Cumberland	6,314	6,259	99.1%	5,941	5,889	99.1%	0.0%
Essex	23,694	22,466	94.8%	21,461	20,518	95.6%	0.8%
Gloucester	4,164	4,096	98.4%	3,797	3,764	99.1%	0.8%
Hudson	9,610	9,240	96.1%	8,559	8,299	97.0%	0.8%
Hunterdon	242	242	100.0%	205	205	100.0%	0.0%
Mercer	6,652	6,436	96.8%	5,938	5,778	97.3%	0.6%
Middlesex	6,042	5,902	97.7%	5,575	5,437	97.5%	-0.2%
Monmouth	4,796	4,639	96.7%	4,249	4,123	97.0%	0.3%
Morris	1,197	1,204	100.6%	1,074	1,061	98.8%	-1.8%
Ocean	4,594	4,470	97.3%	4,249	4,161	97.9%	0.6%
Passaic	9,639	9,312	96.6%	8,735	8,471	97.0%	0.4%
Salem	2,601	2,507	96.4%	2,444	2,360	96.6%	0.2%
Somerset	1,323	1,286	97.2%	1,194	1,158	97.0%	-0.2%
Sussex	497	490	98.6%	428	429	100.2%	1.6%
Union	9,691	9,252	95.5%	9,131	8,749	95.8%	0.3%
Warren	867	868	100.1%	727	734	101.0%	0.8%
NJ TOTALS	121,920	118,061	96.8%	111,387	108,298	97.2%	0.4%

SOURCE: NJKiDS (Based on Federal Performance Measures - OCSE-157)

* Information on Out of Wedlock Births obtained from NJ Bureau of Vital Statistics

**TABLE 14:
OFFICE OF
CHILD SUPPORT
SERVICES**

**OFFICE OF CHILD SUPPORT SERVICES
STATE SUMMARY
TITLE IV-D REPORT OF CASES WITH ORDERS**

Comparison of October (FFY 2021 vs. FFY 2022)

County	OCTOBER 2020			OCTOBER 2021			Increase or Decrease (-) from FFY 2021 to FFY 2022
	Total Cases	Cases with Orders	% of Cases with Orders	Total Cases	Cases with Orders	% of Cases with Orders	
Atlantic	10,955	10,151	92.7%	10,352	9,598	92.7%	0.1%
Bergen	11,108	10,853	97.7%	10,452	10,181	97.4%	-0.3%
Burlington	12,036	11,377	94.5%	11,388	10,803	94.9%	0.3%
Camden	26,824	25,185	93.9%	25,413	24,253	95.4%	1.5%
Cape May	2,801	2,621	93.6%	2,635	2,515	95.4%	1.9%
Cumberland	11,185	10,777	96.4%	10,697	10,283	96.1%	-0.2%
Essex	38,944	33,229	85.3%	35,462	31,242	88.1%	2.8%
Gloucester	9,683	9,350	96.6%	9,131	8,799	96.4%	-0.2%
Hudson	18,896	16,873	89.3%	17,415	15,834	90.9%	1.6%
Hunterdon	1,317	1,236	93.8%	1,244	1,169	94.0%	0.1%
Mercer	12,600	11,498	91.3%	11,553	10,591	91.7%	0.4%
Middlesex	16,125	15,156	94.0%	15,128	14,270	94.3%	0.3%
Monmouth	12,581	12,049	95.8%	11,573	11,066	95.6%	-0.2%
Morris	5,370	5,250	97.8%	5,077	4,931	97.1%	-0.6%
Ocean	13,567	13,089	96.5%	12,726	12,313	96.8%	0.3%
Passaic	18,384	15,851	86.2%	16,810	14,943	88.9%	2.7%
Salem	3,990	3,831	96.0%	3,704	3,552	95.9%	-0.1%
Somerset	4,270	4,046	94.8%	3,977	3,755	94.4%	-0.3%
Sussex	2,437	2,392	98.2%	2,258	2,225	98.5%	0.4%
Union	16,942	16,158	95.4%	16,212	15,442	95.3%	-0.1%
Warren	2,741	2,591	94.5%	2,415	2,317	95.9%	1.4%
NJ TOTALS	252,756	233,563	92.4%	235,622	220,082	93.4%	1.0%

SOURCE: NJKiDS (Based on Federal Performance Measures - OCSE-157)

**TABLE 15:
OFFICE OF
CHILD SUPPORT
SERVICES**

**OFFICE OF CHILD SUPPORT SERVICES
STATE SUMMARY
TITLE IV-D COLLECTIONS ON CURRENT SUPPORT
Comparison of October (FFY 2021 vs. FFY 2022)**

County	OCTOBER 2020			OCTOBER 2021			Increase or Decrease (-) from FFY 2021 to FFY 2022
	Total Current Support Due	Total Current Support Distributed	Total Collection Rate	Total Current Support Due	Total Current Support Distributed	Total Collection Rate	
Atlantic	\$3,604,092	\$2,460,703	68.3%	\$3,342,790	\$2,084,875	62.4%	-5.9%
Bergen	\$8,272,581	\$6,052,888	73.2%	\$7,338,117	\$5,454,545	74.3%	1.2%
Burlington	\$5,401,252	\$3,866,870	71.6%	\$4,948,920	\$3,388,739	68.5%	-3.1%
Camden	\$7,640,977	\$4,819,681	63.1%	\$7,113,122	\$4,199,448	59.0%	-4.0%
Cape May	\$1,060,281	\$757,723	71.5%	\$976,454	\$640,194	65.6%	-5.9%
Cumberland	\$2,929,351	\$1,806,470	61.7%	\$2,731,716	\$1,545,751	56.6%	-5.1%
Essex	\$10,190,566	\$6,406,566	62.9%	\$9,385,760	\$5,435,340	57.9%	-5.0%
Gloucester	\$4,043,548	\$2,789,923	69.0%	\$3,739,456	\$2,468,336	66.0%	-3.0%
Hudson	\$6,925,578	\$4,849,959	70.0%	\$6,496,281	\$4,270,700	65.7%	-4.3%
Hunterdon	\$1,173,808	\$926,344	78.9%	\$1,064,146	\$856,960	80.5%	1.6%
Mercer	\$3,904,945	\$2,532,546	64.9%	\$3,523,062	\$2,213,953	62.8%	-2.0%
Middlesex	\$7,233,592	\$5,233,332	72.3%	\$6,610,197	\$4,497,227	68.0%	-4.3%
Monmouth	\$6,876,213	\$5,174,912	75.3%	\$6,192,843	\$4,513,302	72.9%	-2.4%
Morris	\$4,168,468	\$3,146,878	75.5%	\$3,828,214	\$2,792,307	72.9%	-2.6%
Ocean	\$6,235,993	\$4,587,412	73.6%	\$5,747,784	\$4,085,595	71.1%	-2.5%
Passaic	\$6,181,582	\$4,133,394	66.9%	\$5,724,220	\$3,531,096	61.7%	-5.2%
Salem	\$1,083,807	\$667,782	61.6%	\$995,829	\$588,636	59.1%	-2.5%
Somerset	\$2,926,915	\$2,389,709	81.6%	\$2,635,832	\$2,100,258	79.7%	-2.0%
Sussex	\$1,659,934	\$1,303,153	78.5%	\$1,550,411	\$1,169,423	75.4%	-3.1%
Union	\$6,537,967	\$4,646,390	71.1%	\$6,107,599	\$4,119,439	67.4%	-3.6%
Warren	\$1,232,765	\$902,227	73.2%	\$1,099,451	\$788,140	71.7%	-1.5%
NJ TOTALS	\$99,284,211	\$69,454,861	70.0%	\$91,152,204	\$60,744,264	66.6%	-3.3%

SOURCE: NJKiDS (Based on Federal Performance Measures - OCSE-157)

**TABLE 16:
OFFICE OF
CHILD SUPPORT
SERVICES**

**OFFICE OF CHILD SUPPORT SERVICES
STATE SUMMARY
TITLE IV-D CASES ARREARS COLLECTION REPORT**
Comparison of October (FFY 2021 vs. FFY 2022)

County	OCTOBER 2020			OCTOBER 2021			Increase or Decrease (-) from FFY 2021 to FFY 2022
	Total Cases with Arrears	Total Amount Collected	Average Arrears Collection per Case	Total Cases with Arrears	Total Amount Collected	Average Arrears Collection per Case	
Atlantic	6,624	\$631,030	\$95.26	6,289	\$558,967	\$88.88	-\$6.38
Bergen	6,902	\$973,414	\$141.03	6,513	\$943,899	\$144.93	\$3.89
Burlington	7,530	\$943,452	\$125.29	7,079	\$966,106	\$136.47	\$11.18
Camden	15,642	\$1,551,492	\$99.19	14,561	\$1,567,682	\$107.66	\$8.48
Cape May	1,775	\$125,293	\$70.59	1,695	\$144,595	\$85.31	\$14.72
Cumberland	6,904	\$644,532	\$93.36	6,400	\$501,916	\$78.42	-\$14.93
Essex	20,947	\$2,352,966	\$112.33	19,197	\$2,077,320	\$108.21	-\$4.12
Gloucester	6,243	\$676,514	\$108.36	5,747	\$617,057	\$107.37	-\$0.99
Hudson	11,234	\$1,236,985	\$110.11	10,598	\$1,287,815	\$121.51	\$11.40
Hunterdon	763	\$155,123	\$203.31	720	\$136,670	\$189.82	-\$13.49
Mercer	7,773	\$902,429	\$116.10	7,011	\$798,053	\$113.83	-\$2.27
Middlesex	9,959	\$1,177,670	\$118.25	9,341	\$1,233,814	\$132.09	\$13.83
Monmouth	7,912	\$1,376,889	\$174.03	7,033	\$970,833	\$138.04	-\$35.99
Morris	3,492	\$515,230	\$147.55	3,263	\$570,703	\$174.90	\$27.36
Ocean	8,358	\$953,915	\$114.13	7,638	\$956,302	\$125.20	\$11.07
Passaic	10,644	\$1,116,087	\$104.86	9,907	\$987,668	\$99.69	-\$5.16
Salem	2,369	\$191,347	\$80.77	2,141	\$184,123	\$86.00	\$5.23
Somerset	2,612	\$418,635	\$160.27	2,408	\$350,329	\$145.49	-\$14.79
Sussex	1,563	\$201,927	\$129.19	1,434	\$226,780	\$158.15	\$28.95
Union	10,474	\$1,344,175	\$128.33	9,871	\$1,159,365	\$117.45	-\$10.88
Warren	1,622	\$156,732	\$96.63	1,501	\$184,551	\$122.95	\$26.32
NJ TOTALS	151,342	\$17,645,837	\$116.60	140,347	\$16,424,548	\$117.03	\$0.43

SOURCE: OCSE-157 Child Support Enforcement Annual Data Report

Table 17**WORK FIRST NEW JERSEY STATISTICAL SUMMARY****WFNJ****OCTOBER 2021**

COUNTY	EMPLOYMENT DIRECTED ACTIVITIES			EMPLOYED OPEN (WFNJ RECIPIENT)	SUPPORT SERVICES ON ACTIVE CASE		CLOSED FOR EMPLOYMENT THIS MONTH	POST ASSISTANCE CHILD CARE
	CWEP	ALL OTHER TRAINING	JOB SEARCH		CHILD CARE	TRAINING REL. EXPENSES		
ATLANTIC	0	14	7	28	4	35	2	25
BERGEN	1	0	0	6	14	0	3	5
BURLINGTON	0	12	0	2	3	0	2	18
CAMDEN	20	123	0	26	31	1	8	19
CAPE MAY	0	1	0	1	3	0	1	5
CUMBERLAND	0	12	0	8	0	2	2	2
ESSEX	4	127	0	42	50	34	13	48
GLOUCESTER	0	1	0	8	6	1	2	3
HUDSON	13	179	20	46	57	6	19	23
HUNTERDON	0	0	0	1	2	0	0	0
MERCER	3	56	0	28	71	1	5	30
MIDDLESEX	0	39	2	21	3	1	4	28
MONMOUTH	0	11	3	12	14	2	1	20
MORRIS	0	6	0	3	1	0	1	5
OCEAN	0	23	0	6	8	2	2	14
PASSAIC	0	18	1	13	32	3	11	4
SALEM	0	14	0	2	5	0	1	0
SOMERSET	0	26	2	8	19	4	0	4
SUSSEX	0	0	0	0	11	0	0	1
UNION	0	41	0	8	4	0	1	2
WARREN	0	16	0	3	0	1	0	0
STATE TOTAL	41	719	35	272	338	93	78	256

Data is derived from NJ Division of Family Development's FAMIS Reports RM064-01 & RM703-51, AdHoc Reports 5549 & 5598 and SDW Report WR00022WZ_CC

**DIVISION OF FAMILY DEVELOPMENT CURRENT PROGRAM STATISTICS
OCTOBER 2021**

ACRONYMS

EMERGENCY ASSISTANCE (EA) - Payments to those eligible for WFNJ/TANF or WFNJ/GA, authorized during the 30 consecutive days immediately following the emergency (defined as a substantial loss of shelter, food, clothing, or household furnishings by fire, flood or other similar disaster) or if eligible individual or family is in an imminent or actual state of homelessness.

NJ SNAP - Formerly the Food Stamp Program, now known as NJ SNAP (NJ Supplemental Nutrition Assistance Program) authorized by Congress as a nutritional supplement program to provide low income households with more food of greater variety and better nutrition. Program eligibility is based on household income, resources, and expenses for medical, shelter, and dependent care. CWA staff refers certain recipients to the New Jersey Department of Labor for participation in the Food Stamp Employment

FAMIS: Family Assistance Management Information System

GAAS: General Assistance Automated System

NJKiDS: New Jersey Kids Deserve Support (Child Support Information Management System)

NJ MMIS SHARED DATA WAREHOUSE: The Shared Data Warehouse (SDW) is the repository for New Jersey's DFD and Medicaid data. Since 2003, OptumInsight has administered the SDW and provided access to the data through a reporting tool known as Business Objects.

OMEGA: Online Management of Economic Goal Achievement

SSI-EA: Supplemental Security Income-Emergency Assistance

WFNJ: Work First New Jersey - Fully implemented July 1, 1997, this is New Jersey's welfare reform program which responds to the requirements of the Federal Personal Responsibility and Work Opportunity Reconciliation Act (**PRWORA**) of 1996. PRWORA established Temporary Assistance for Needy Families (**TANF**) as the replacement for AFDC cash assistance. WFNJ includes two segments, **WFNJ/TANF** for families with children, and **WFNJ/GA** (General Assistance) for single adults and couples without dependent children. WFNJ emphasizes achieving self-sufficiency and limits lifetime

**DIVISION OF FAMILY DEVELOPMENT CURRENT PROGRAM STATISTICS
OCTOBER 2021**

EXPLANATORY NOTES

The Department of Human Services Division of Family Development provides basic income and an opportunity to achieve self-sufficiency for individuals and families served by the Division's programs. The Division provides leadership, direction and supervision to those public agencies responsible for administering those programs and plans for and develops policies to promote self-sufficiency.

WFNJ STATISTICAL SUMMARY (TABLE 17)

Employment Directed Activities (EDA) - From Activities Summary Report (OMEGA report # RM064). Unduplicated count of persons participating in Community Work Experience Program (CWEP), All Other Training, or Job Search.

Number of Persons Employed This Month, Still Receiving TANF - Individuals with open "empl" activity on OMEGA. Ad hoc report.

Participants Receiving Child Care Services - From Issuance Disbursement Summary (OMEGA report # RM703). Total number of active participants who show receipt of Child Care.

Number of Persons Closed on FAMIS Due to Employment - From FAMIS report #5549-RM-2

Post TANF and Receiving Child Care - Persons no longer in receipt of TANF but still receiving child care. From Share Data Warehouse Child Care case count based on Child Care payments (SDW report WR00022WZ_CC).