

OVERVIEW

MONMOUTH
SPRING LAKE HEIGHTS BORO

GRADE SPAN KG-08

SPRING LAKE HEIGHTS ELEMENTARY SCHOOL
1110 HIGHWAY NO 71
SPRING LAKE HEIGHTS, NJ 07762-2009

The New Jersey Department of Education (NJDOE) is pleased to present these annual reports of School Performance. These reports are designed to inform parents, educators and communities about how well a school is performing and preparing its students for college and careers.

In particular, the School Performance Reports seek to:

- **Focus** attention on metrics that are indicative of college and career readiness.
- **Benchmark** a school's performance against other peer schools that are educating similar students, against statewide outcomes, and against state targets to illuminate and build upon a school's strengths and identify areas for improvement.
- **Improve** educational outcomes for students by providing both longitudinal and growth data so that progress can be measured as part of an individual school's efforts to engage in continuous improvement.

While the New Jersey School Performance Reports seek to bring more information to educators and stakeholders about the performance of schools, they do not seek to distill the performance of schools into a single metric, a single score, or a simplified conclusion. Instead, the intention is that educators and stakeholders will engage in deep, lengthy conversations about the full range of the data presented. As educators know well, measuring school performance is both an art and a science. While the School Performance Report brings attention to important student outcomes, NJDOE does not collect data about other essential elements of a school, such as the provision of opportunities to participate and excel in extracurricular activities; the development of non-cognitive skills like time management and perseverance; the pervasiveness of a positive school culture or climate; or the attainment of other employability and technical skills, as many of these data are beyond both the capacity and resources of schools to measure and collect well.

To learn more about New Jersey's school accountability system, please visit: <http://www.nj.gov/education/educators/>.

DEMOGRAPHIC INFORMATION

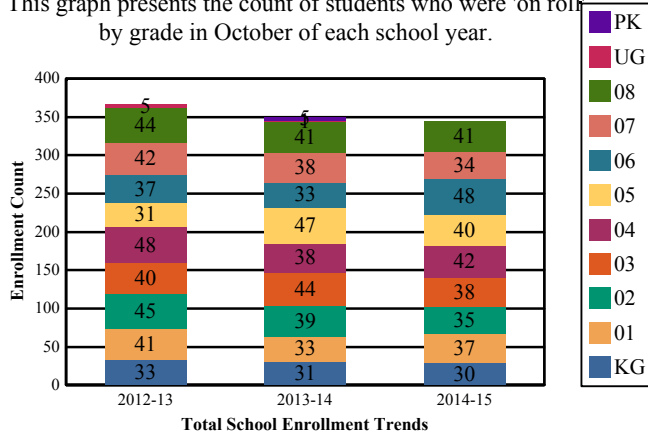
MONMOUTH
SPRING LAKE HEIGHTS BORO

SPRING LAKE HEIGHTS ELEMENTARY SCHOOL
1110 HIGHWAY NO 71
SPRING LAKE HEIGHTS, NJ 07762-2009

GRADE SPAN KG-08

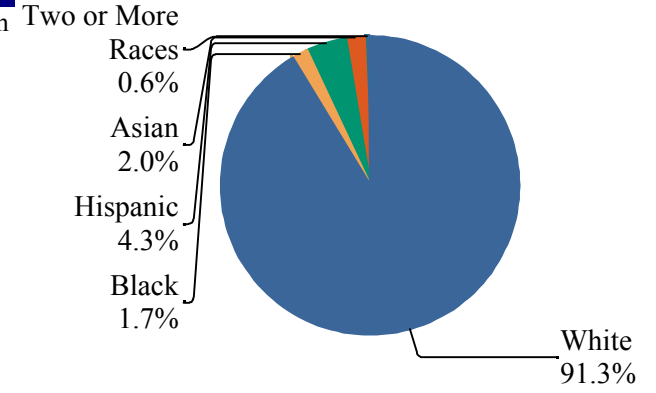
Enrollment by Grade

This graph presents the count of students who were 'on roll' by grade in October of each school year.



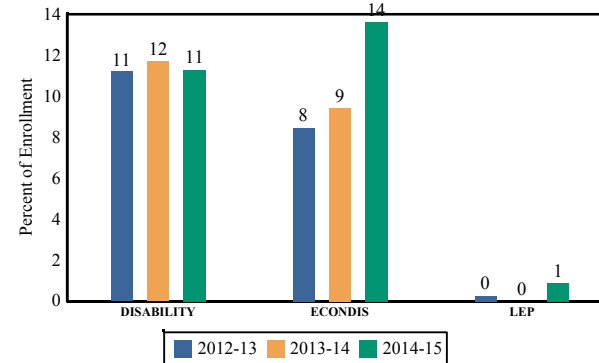
Enrollment by Ethnic/Racial Subgroup

This graph presents the percentages of enrollment for each subgroup defined by the No Child Left Behind Act of 2001.

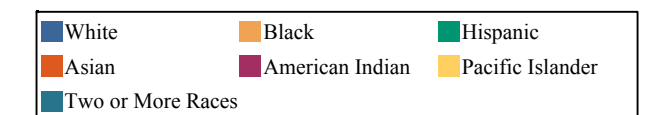
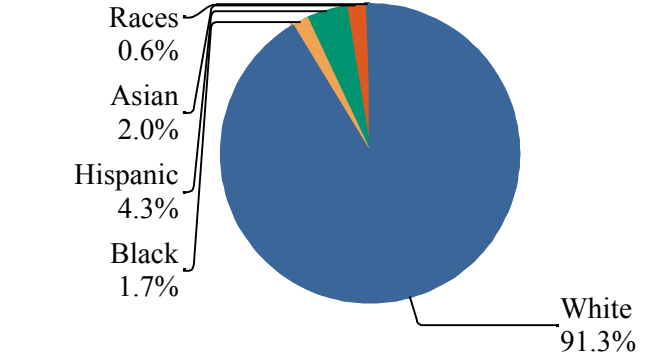


Enrollment Trends by Program Participation

This graph presents the percentages of students by program participation who were 'on roll' in October of each school year.



Two or More

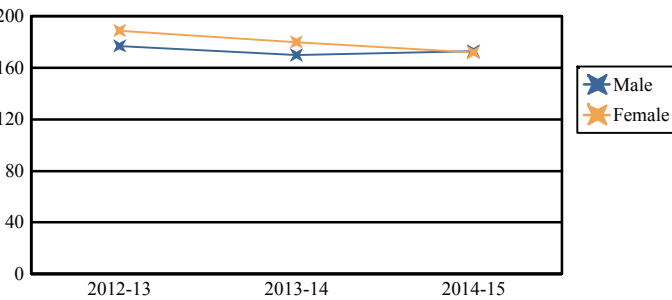


Note: "UG" represents the count of students who are 'on roll' in this school but who are educated in ungraded classrooms, meaning that the classrooms may contain students from multiple grade levels.

Total School Enrollment	
2012-13	366
2013-14	350
2014-15	345

Enrollment by Gender

This graph presents the count of students by gender who were 'on roll' in October of each school year.



	Male	Female
2012-13	177	189
2013-14	170	180
2014-15	173	172

Current Year Enrollment by Program Participation

2014-15	Count of Students	% of Enrollment
Students with Disability	39	11%
Economically Disadvantaged Students	47	13.6%
English Language Learners	3	0.9%

Language Diversity

This table presents the percentage of students who primarily speak each language in their home.

2014-15	Percent
English	95.9%
Spanish	1.8%
Korean	0.6%
Lithuanian	0.6%
Latvian	0.3%
Ukrainian	0.3%
Other	0.6%

ACADEMIC ACHIEVEMENT

**MONMOUTH
SPRING LAKE HEIGHTS BORO**

GRADE SPAN KG-08

**SPRING LAKE HEIGHTS ELEMENTARY SCHOOL
1110 HIGHWAY NO 71
SPRING LAKE HEIGHTS, NJ 07762-2009**

The Academic Achievement section measures the content knowledge that students have in English Language Arts/Literacy (ELA/L) and Math as demonstrated in the 2014-2015 *Partnership for Assessment of Readiness for College and Careers* (PARCC) assessments. The below chart consist of three columns. The first column - Schoolwide Performance - includes the percentage of students in ELA/L and Math who met or exceeded grade level expectations. The middle column - Peer School Percentile - indicates how the school's outcomes compared to its peers. The last column - Statewide Percentile - indicates how the school's outcomes compared to schools across the state.

Academic Achievement Indicators	Schoolwide Performance	Peer Percentile	State Percentile
English Language Arts/Literacy Met or Exceeded Expectation	73%	81	87
Math Met or Exceeded Expectation	52%		

ESEA Waiver - English Language Arts/Literacy

This table presents, for each subgroup in the school, the total number of valid test scores, the percentage of students who met or exceeded expectations, the assessment participation goal, and the participation rate. The participation goal is established as 95% by the United States Department of Education.

Subgroups	Valid Scores	% Meeting Standards	Participation Goal	Participation Rate	Met Participation?
Schoolwide	213	72.8%	95%	89.8%	YES*
White	203	72.9%	95%	90%	YES*
African American	-	-	--	--	--
Hispanic	-	-	--	--	--
American Indian	-	-	--	--	--
Asian	-	-	--	--	--
Two or More Races	-	-	--	--	--
Students with Disability	-	-	--	--	--
English Language Learners	-	-	--	--	--
Economically Disadvantaged Students	-	-	--	--	--

YES* = Met Participation Rate (Participation Averaging applied)

Data is presented for subgroups when the count is high enough under ESEA Waiver suppression rules.

ACADEMIC ACHIEVEMENT

MONMOUTH
SPRING LAKE HEIGHTS BORO

GRADE SPAN KG-08

SPRING LAKE HEIGHTS ELEMENTARY SCHOOL
1110 HIGHWAY NO 71
SPRING LAKE HEIGHTS, NJ 07762-2009

ESEA Waiver - Math

This table presents, for each subgroup in the school, the total number of valid test scores, the percentage of students who met or exceeded expectations, the assessment participation goal, and the participation rate. The participation goal is established as 95% by the United States Department of Education.

Subgroups	Valid Scores	% Meeting Standards	Participation Goal	Participation Rate	Met Participation?
Schoolwide	213	51.7%	95%	89.8%	YES*
White	203	51.7%	95%	90%	YES*
African American	-	-	--	--	--
Hispanic	-	-	--	--	--
American Indian	-	-	--	--	--
Asian	-	-	--	--	--
Two or More Races	-	-	--	--	--
Students with Disability	-	-	--	--	--
English Learner Students	-	-	--	--	--
Economically Disadvantaged Students	-	-	--	--	--

YES* = Met Participation Rate (Participation Averaging applied)

Data is presented for subgroups when the count is high enough under ESEA Waiver suppression rules.

ACADEMIC ACHIEVEMENT

MONMOUTH
SPRING LAKE HEIGHTS BORO

GRADE SPAN KG-08

SPRING LAKE HEIGHTS ELEMENTARY SCHOOL
1110 HIGHWAY NO 71
SPRING LAKE HEIGHTS, NJ 07762-2009

PARCC Performance Level

The PARCC assesses how well students have learned grade-level material in English Language Arts/Literacy (ELA/L) and Math. The tests include questions that measure students' fundamental skills and knowledge, and require them to think critically, solve problems and support or explain their answers.

The PARCC reports students' overall scale scores that range from 650 to 850. To determine whether students have met academic expectations for their grade level/course in ELA/L and Math, students' overall scale scores are categorized into five Performance Levels. Students performing at levels 4 and 5 (met or exceeded expectations) have demonstrated readiness for the next grade level/course, and are on track for college and careers.

Five Performance Levels				
Level 1: Did Not Yet Meet Expectations <i>(Min. 650)</i>	Level 2: Partially Met Expectations	Level 3: Approached Expectations	Level 4: Met Expectations	Level 5: Exceeded Expectations <i>(Max. 850)</i>

ACADEMIC ACHIEVEMENT

MONMOUTH
SPRING LAKE HEIGHTS BORO

GRADE SPAN KG-08

SPRING LAKE HEIGHTS ELEMENTARY SCHOOL
1110 HIGHWAY NO 71
SPRING LAKE HEIGHTS, NJ 07762-2009

PARCC ELA Performance Distribution - Grade - 03

This table presents the grade level outcomes, as measured by PARCC, in all five performance levels for all subgroups. PARCC consists of five performance levels: Level 1 - Did not yet meet grade-level expectations, Level 2 -Partially met expectations, Level 3 - Approached expectations, Level 4 - Met expectations, and Level 5 - Exceeded expectations.

Subgroup	Valid Scores	Mean Scale Score	State Mean Scale Score	% Level_1	% Level_2	% Level_3	% Level_4	% Level_5	% Met/ Exceeded Expectation	State % Met/Exceeded Expectation
Schoolwide	38	766	744	3%	8%	16%	63%	11%	74%	44%
White	37	767	753	3%	8%	16%	62%	11%	73%	55%
African American	-	-	725	-	-	-	-	-	-	26%
Hispanic	-	-	727	-	-	-	-	-	-	26%
American Indian	-	-	738	-	-	-	-	-	-	40%
Asian	-	-	769	-	-	-	-	-	-	70%
Two or More Races	-	-	751	-	-	-	-	-	-	53%
Students with Disability	-	-	718	-	-	-	-	-	-	24%
English Language Learners	-	-	709	-	-	-	-	-	-	11%
Economically Disadvantaged Students	-	-	724	-	-	-	-	-	-	24%

ACADEMIC ACHIEVEMENT

MONMOUTH
SPRING LAKE HEIGHTS BORO

GRADE SPAN KG-08

SPRING LAKE HEIGHTS ELEMENTARY SCHOOL
1110 HIGHWAY NO 71
SPRING LAKE HEIGHTS, NJ 07762-2009

PARCC ELA Performance Distribution - Grade - 04

This table presents the grade level outcomes, as measured by PARCC, in all five performance levels for all subgroups. PARCC consists of five performance levels: Level 1 - Did not yet meet grade-level expectations, Level 2 -Partially met expectations, Level 3 - Approached expectations, Level 4 - Met expectations, and Level 5 - Exceeded expectations.

Subgroup	Valid Scores	Mean Scale Score	State Mean Scale Score	% Level_1	% Level_2	% Level_3	% Level_4	% Level_5	% Met/ Exceeded Expectation	State % Met/Exceeded Expectation
Schoolwide	39	773	751	0%	3%	18%	54%	26%	79%	52%
White	37	773	758	0%	3%	16%	57%	24%	81%	63%
African American	-	-	733	-	-	-	-	-	-	30%
Hispanic	-	-	737	-	-	-	-	-	-	35%
American Indian	-	-	746	-	-	-	-	-	-	52%
Asian	-	-	773	-	-	-	-	-	-	78%
Two or More Races	-	-	760	-	-	-	-	-	-	62%
Students with Disability	-	-	725	-	-	-	-	-	-	25%
English Language Learners	-	-	717	-	-	-	-	-	-	15%
Economically Disadvantaged Students	-	-	734	-	-	-	-	-	-	31%

ACADEMIC ACHIEVEMENT

MONMOUTH
SPRING LAKE HEIGHTS BORO

SPRING LAKE HEIGHTS ELEMENTARY SCHOOL
1110 HIGHWAY NO 71
SPRING LAKE HEIGHTS, NJ 07762-2009

GRADE SPAN KG-08

PARCC ELA Performance Distribution - Grade - 05

This table presents the grade level outcomes, as measured by PARCC, in all five performance levels for all subgroups. PARCC consists of five performance levels: Level 1 - Did not yet meet grade-level expectations, Level 2 -Partially met expectations, Level 3 - Approached expectations, Level 4 - Met expectations, and Level 5 - Exceeded expectations.

Subgroup	Valid Scores	Mean Scale Score	State Mean Scale Score	% Level_1	% Level_2	% Level_3	% Level_4	% Level_5	% Met/ Exceeded Expectation	State % Met/Exceeded Expectation
Schoolwide	34	758	751	9%	6%	21%	53%	12%	65%	53%
White	32	759	757	6%	6%	22%	53%	13%	66%	62%
African American	-	-	734	-	-	-	-	-	-	31%
Hispanic	-	-	737	-	-	-	-	-	-	35%
American Indian	-	-	746	-	-	-	-	-	-	45%
Asian	-	-	771	-	-	-	-	-	-	77%
Two or More Races	-	-	758	-	-	-	-	-	-	61%
Students with Disability	-	-	723	-	-	-	-	-	-	21%
English Language Learners	-	-	717	-	-	-	-	-	-	15%
Economically Disadvantaged Students	-	-	734	-	-	-	-	-	-	31%

ACADEMIC ACHIEVEMENT

MONMOUTH
SPRING LAKE HEIGHTS BORO

GRADE SPAN KG-08

SPRING LAKE HEIGHTS ELEMENTARY SCHOOL
1110 HIGHWAY NO 71
SPRING LAKE HEIGHTS, NJ 07762-2009

PARCC ELA Performance Distribution - Grade - 06

This table presents the grade level outcomes, as measured by PARCC, in all five performance levels for all subgroups. PARCC consists of five performance levels: Level 1 - Did not yet meet grade-level expectations, Level 2 -Partially met expectations, Level 3 - Approached expectations, Level 4 - Met expectations, and Level 5 - Exceeded expectations.

Subgroup	Valid Scores	Mean Scale Score	State Mean Scale Score	% Level_1	% Level_2	% Level_3	% Level_4	% Level_5	% Met/ Exceeded Expectation	State % Met/Exceeded Expectation
Schoolwide	43	761	749	2%	5%	28%	53%	12%	65%	50%
White	40	761	755	3%	5%	28%	53%	13%	65%	59%
African American	-	-	732	-	-	-	-	-	-	29%
Hispanic	-	-	736	-	-	-	-	-	-	34%
American Indian	-	-	743	-	-	-	-	-	-	39%
Asian	-	-	770	-	-	-	-	-	-	77%
Two or More Races	-	-	753	-	-	-	-	-	-	57%
Students with Disability	-	-	718	-	-	-	-	-	-	17%
English Language Learners	-	-	711	-	-	-	-	-	-	11%
Economically Disadvantaged Students	-	-	733	-	-	-	-	-	-	30%

ACADEMIC ACHIEVEMENT

MONMOUTH
SPRING LAKE HEIGHTS BORO

GRADE SPAN KG-08

SPRING LAKE HEIGHTS ELEMENTARY SCHOOL
1110 HIGHWAY NO 71
SPRING LAKE HEIGHTS, NJ 07762-2009

PARCC ELA Performance Distribution - Grade - 07

This table presents the grade level outcomes, as measured by PARCC, in all five performance levels for all subgroups. PARCC consists of five performance levels: Level 1 - Did not yet meet grade-level expectations, Level 2 -Partially met expectations, Level 3 - Approached expectations, Level 4 - Met expectations, and Level 5 - Exceeded expectations.

Subgroup	Valid Scores	Mean Scale Score	State Mean Scale Score	% Level_1	% Level_2	% Level_3	% Level_4	% Level_5	% Met/ Exceeded Expectation	State % Met/Exceeded Expectation
Schoolwide	29	763	750	7%	3%	21%	41%	28%	69%	53%
White	28	762	757	7%	4%	21%	43%	25%	68%	61%
African American	-	-	730	-	-	-	-	-	-	31%
Hispanic	-	-	736	-	-	-	-	-	-	36%
American Indian	-	-	746	-	-	-	-	-	-	49%
Asian	-	-	777	-	-	-	-	-	-	80%
Two or More Races	-	-	756	-	-	-	-	-	-	58%
Students with Disability	-	-	713	-	-	-	-	-	-	18%
English Language Learners	-	-	703	-	-	-	-	-	-	11%
Economically Disadvantaged Students	-	-	733	-	-	-	-	-	-	33%

ACADEMIC ACHIEVEMENT

MONMOUTH
SPRING LAKE HEIGHTS BORO

GRADE SPAN KG-08

SPRING LAKE HEIGHTS ELEMENTARY SCHOOL
1110 HIGHWAY NO 71
SPRING LAKE HEIGHTS, NJ 07762-2009

PARCC ELA Performance Distribution - Grade - 08

This table presents the grade level outcomes, as measured by PARCC, in all five performance levels for all subgroups. PARCC consists of five performance levels: Level 1 - Did not yet meet grade-level expectations, Level 2 -Partially met expectations, Level 3 - Approached expectations, Level 4 - Met expectations, and Level 5 - Exceeded expectations.

Subgroup	Valid Scores	Mean Scale Score	State Mean Scale Score	% Level_1	% Level_2	% Level_3	% Level_4	% Level_5	% Met/ Exceeded Expectation	State % Met/Exceeded Expectation
Schoolwide	30	783	750	3%	0%	10%	43%	43%	87%	53%
White	29	782	757	3%	0%	10%	45%	41%	86%	61%
African American	-	-	730	-	-	-	-	-	-	31%
Hispanic	-	-	735	-	-	-	-	-	-	37%
American Indian	-	-	741	-	-	-	-	-	-	49%
Asian	-	-	778	-	-	-	-	-	-	80%
Two or More Races	-	-	753	-	-	-	-	-	-	55%
Students with Disability	-	-	713	-	-	-	-	-	-	16%
English Language Learners	-	-	701	-	-	-	-	-	-	9%
Economically Disadvantaged Students	-	-	732	-	-	-	-	-	-	34%

ACADEMIC ACHIEVEMENT

MONMOUTH
SPRING LAKE HEIGHTS BORO

GRADE SPAN KG-08

SPRING LAKE HEIGHTS ELEMENTARY SCHOOL
1110 HIGHWAY NO 71
SPRING LAKE HEIGHTS, NJ 07762-2009

PARCC MATH - Performance Distribution - Grade - 03

This table presents the grade level outcomes, as measured by PARCC, in all five performance levels for all subgroups. PARCC consists of five performance levels: Level 1 - Did not yet meet grade-level expectations, Level 2 -Partially met expectations, Level 3 - Approached expectations, Level 4 - Met expectations, and Level 5 - Exceeded expectations.

Subgroup	Valid Scores	Mean Scale Score	State Mean Scale Score	% Level_1	% Level_2	% Level_3	% Level_4	% Level_5	% Met/ Exceeded Expectation	State % Met/Exceeded Expectation
Schoolwide	38	759	746	0%	13%	29%	45%	13%	58%	46%
White	37	759	752	0%	14%	27%	46%	14%	59%	56%
African American	-	-	728	-	-	-	-	-	-	25%
Hispanic	-	-	733	-	-	-	-	-	-	28%
American Indian	-	-	742	-	-	-	-	-	-	41%
Asian	-	-	772	-	-	-	-	-	-	77%
Two or More Races	-	-	751	-	-	-	-	-	-	54%
Students with Disability	-	-	727	-	-	-	-	-	-	27%
English Language Learners	-	-	724	-	-	-	-	-	-	17%
Economically Disadvantaged Students	-	-	730	-	-	-	-	-	-	26%

ACADEMIC ACHIEVEMENT

MONMOUTH
SPRING LAKE HEIGHTS BORO

SPRING LAKE HEIGHTS ELEMENTARY SCHOOL
1110 HIGHWAY NO 71
SPRING LAKE HEIGHTS, NJ 07762-2009

GRADE SPAN KG-08

PARCC MATH - Performance Distribution - Grade - 04

This table presents the grade level outcomes, as measured by PARCC, in all five performance levels for all subgroups. PARCC consists of five performance levels: Level 1 - Did not yet meet grade-level expectations, Level 2 -Partially met expectations, Level 3 - Approached expectations, Level 4 - Met expectations, and Level 5 - Exceeded expectations.

Subgroup	Valid Scores	Mean Scale Score	State Mean Scale Score	% Level_1	% Level_2	% Level_3	% Level_4	% Level_5	% Met/ Exceeded Expectation	State % Met/Exceeded Expectation
Schoolwide	39	750	744	0%	13%	31%	56%	0%	56%	42%
White	37	749	749	0%	14%	30%	57%	0%	57%	50%
African American	-	-	727	-	-	-	-	-	-	20%
Hispanic	-	-	732	-	-	-	-	-	-	26%
American Indian	-	-	740	-	-	-	-	-	-	40%
Asian	-	-	769	-	-	-	-	-	-	75%
Two or More Races	-	-	750	-	-	-	-	-	-	52%
Students with Disability	-	-	724	-	-	-	-	-	-	21%
English Language Learners	-	-	722	-	-	-	-	-	-	15%
Economically Disadvantaged Students	-	-	730	-	-	-	-	-	-	23%

ACADEMIC ACHIEVEMENT

MONMOUTH
SPRING LAKE HEIGHTS BORO

SPRING LAKE HEIGHTS ELEMENTARY SCHOOL
1110 HIGHWAY NO 71
SPRING LAKE HEIGHTS, NJ 07762-2009

GRADE SPAN KG-08

PARCC MATH - Performance Distribution - Grade - 05

This table presents the grade level outcomes, as measured by PARCC, in all five performance levels for all subgroups. PARCC consists of five performance levels: Level 1 - Did not yet meet grade-level expectations, Level 2 -Partially met expectations, Level 3 - Approached expectations, Level 4 - Met expectations, and Level 5 - Exceeded expectations.

Subgroup	Valid Scores	Mean Scale Score	State Mean Scale Score	% Level_1	% Level_2	% Level_3	% Level_4	% Level_5	% Met/ Exceeded Expectation	State % Met/Exceeded Expectation
Schoolwide	34	742	744	6%	12%	41%	41%	0%	41%	42%
White	32	742	749	6%	9%	44%	41%	0%	41%	49%
African American	-	-	728	-	-	-	-	-	-	21%
Hispanic	-	-	733	-	-	-	-	-	-	26%
American Indian	-	-	745	-	-	-	-	-	-	46%
Asian	-	-	768	-	-	-	-	-	-	74%
Two or More Races	-	-	749	-	-	-	-	-	-	50%
Students with Disability	-	-	724	-	-	-	-	-	-	19%
English Language Learners	-	-	724	-	-	-	-	-	-	17%
Economically Disadvantaged Students	-	-	731	-	-	-	-	-	-	23%

ACADEMIC ACHIEVEMENT

MONMOUTH
SPRING LAKE HEIGHTS BORO

SPRING LAKE HEIGHTS ELEMENTARY SCHOOL
1110 HIGHWAY NO 71
SPRING LAKE HEIGHTS, NJ 07762-2009

GRADE SPAN KG-08

PARCC MATH - Performance Distribution - Grade - 06

This table presents the grade level outcomes, as measured by PARCC, in all five performance levels for all subgroups. PARCC consists of five performance levels: Level 1 - Did not yet meet grade-level expectations, Level 2 -Partially met expectations, Level 3 - Approached expectations, Level 4 - Met expectations, and Level 5 - Exceeded expectations.

Subgroup	Valid Scores	Mean Scale Score	State Mean Scale Score	% Level_1	% Level_2	% Level_3	% Level_4	% Level_5	% Met/ Exceeded Expectation	State % Met/Exceeded Expectation
Schoolwide	43	751	743	2%	9%	35%	49%	5%	53%	42%
White	40	751	749	3%	8%	38%	48%	5%	53%	50%
African American	-	-	726	-	-	-	-	-	-	19%
Hispanic	-	-	731	-	-	-	-	-	-	25%
American Indian	-	-	740	-	-	-	-	-	-	35%
Asian	-	-	768	-	-	-	-	-	-	75%
Two or More Races	-	-	745	-	-	-	-	-	-	44%
Students with Disability	-	-	718	-	-	-	-	-	-	15%
English Language Learners	-	-	718	-	-	-	-	-	-	14%
Economically Disadvantaged Students	-	-	729	-	-	-	-	-	-	23%

ACADEMIC ACHIEVEMENT

MONMOUTH
SPRING LAKE HEIGHTS BORO

GRADE SPAN KG-08

SPRING LAKE HEIGHTS ELEMENTARY SCHOOL
1110 HIGHWAY NO 71
SPRING LAKE HEIGHTS, NJ 07762-2009

PARCC MATH - Performance Distribution - Grade - 07

This table presents the grade level outcomes, as measured by PARCC, in all five performance levels for all subgroups. PARCC consists of five performance levels: Level 1 - Did not yet meet grade-level expectations, Level 2 -Partially met expectations, Level 3 - Approached expectations, Level 4 - Met expectations, and Level 5 - Exceeded expectations.

Subgroup	Valid Scores	Mean Scale Score	State Mean Scale Score	% Level_1	% Level_2	% Level_3	% Level_4	% Level_5	% Met/ Exceeded Expectation	State % Met/Exceeded Expectation
Schoolwide	-	-	740	-	-	-	-	-	-	38%
White	-	-	745	-	-	-	-	-	-	46%
African American	-	-	725	-	-	-	-	-	-	17%
Hispanic	-	-	730	-	-	-	-	-	-	23%
American Indian	-	-	734	-	-	-	-	-	-	32%
Asian	-	-	760	-	-	-	-	-	-	68%
Two or More Races	-	-	742	-	-	-	-	-	-	43%
Students with Disability	-	-	715	-	-	-	-	-	-	11%
English Language Learners	-	-	717	-	-	-	-	-	-	11%
Economically Disadvantaged Students	-	-	728	-	-	-	-	-	-	21%

ACADEMIC ACHIEVEMENT

MONMOUTH
SPRING LAKE HEIGHTS BORO

GRADE SPAN KG-08

SPRING LAKE HEIGHTS ELEMENTARY SCHOOL
1110 HIGHWAY NO 71
SPRING LAKE HEIGHTS, NJ 07762-2009

PARCC MATH - Performance Distribution - Grade - 08

This table presents the grade level outcomes, as measured by PARCC, in all five performance levels for all subgroups. PARCC consists of five performance levels: Level 1 - Did not yet meet grade-level expectations, Level 2 -Partially met expectations, Level 3 - Approached expectations, Level 4 - Met expectations, and Level 5 - Exceeded expectations.

Subgroup	Valid Scores	Mean Scale Score	State Mean Scale Score	% Level_1	% Level_2	% Level_3	% Level_4	% Level_5	% Met/ Exceeded Expectation	State % Met/Exceeded Expectation
Schoolwide	11	740	726	0%	27%	36%	36%	0%	36%	24%
White	11	740	732	0%	27%	36%	36%	0%	36%	29%
African American	-	-	715	-	-	-	-	-	-	14%
Hispanic	-	-	721	-	-	-	-	-	-	19%
American Indian	-	-	722	-	-	-	-	-	-	15%
Asian	-	-	744	-	-	-	-	-	-	46%
Two or More Races	-	-	724	-	-	-	-	-	-	24%
Students with Disability	-	-	705	-	-	-	-	-	-	9%
English Language Learners	-	-	706	-	-	-	-	-	-	10%
Economically Disadvantaged Students	-	-	719	-	-	-	-	-	-	17%

ACADEMIC ACHIEVEMENT

MONMOUTH
SPRING LAKE HEIGHTS BORO

GRADE SPAN KG-08

SPRING LAKE HEIGHTS ELEMENTARY SCHOOL
1110 HIGHWAY NO 71
SPRING LAKE HEIGHTS, NJ 07762-2009

PARCC ALGEBRA I - Performance Distribution

This table presents the grade level outcomes, as measured by PARCC, in all five performance levels for all subgroups. PARCC consists of five performance levels: Level 1 - Did not yet meet grade-level expectations, Level 2 -Partially met expectations, Level 3 - Approached expectations, Level 4 - Met expectations, and Level 5 - Exceeded expectations.

Subgroup	Valid Scores	Mean Scale Score	State Mean Scale Score	% Level_1	% Level_2	% Level_3	% Level_4	% Level_5	% Met/ Exceeded Expectation	State % Met/Exceeded Expectation
Schoolwide	22	752	740	5%	5%	18%	73%	0%	73%	40%
White	21	752	746	5%	5%	19%	71%	0%	71%	47%
African American	-	-	722	-	-	-	-	-	-	20%
Hispanic	-	-	725	-	-	-	-	-	-	21%
American Indian	-	-	733	-	-	-	-	-	-	35%
Asian	-	-	769	-	-	-	-	-	-	73%
Two or More Races	-	-	734	-	-	-	-	-	-	35%
Students with Disability	-	-	710	-	-	-	-	-	-	8%
English Language Learners	-	-	710	-	-	-	-	-	-	7%
Economically Disadvantaged Students	-	-	725	-	-	-	-	-	-	21%

ACADEMIC ACHIEVEMENT

MONMOUTH
SPRING LAKE HEIGHTS BORO

GRADE SPAN KG-08

SPRING LAKE HEIGHTS ELEMENTARY SCHOOL
1110 HIGHWAY NO 71
SPRING LAKE HEIGHTS, NJ 07762-2009

PARCC GEOMETRY - Performance Distribution

This table presents the grade level outcomes, as measured by PARCC, in all five performance levels for all subgroups. PARCC consists of five performance levels: Level 1 - Did not yet meet grade-level expectations, Level 2 -Partially met expectations, Level 3 - Approached expectations, Level 4 - Met expectations, and Level 5 - Exceeded expectations.

Subgroup	Valid Scores	Mean Scale Score	State Mean Scale Score	% Level_1	% Level_2	% Level_3	% Level_4	% Level_5	% Met/ Exceeded Expectation	State % Met/Exceeded Expectation
Schoolwide	-	-	728	-	-	-	-	-	-	21%
White	-	-	731	-	-	-	-	-	-	24%
African American	-	-	716	-	-	-	-	-	-	7%
Hispanic	-	-	718	-	-	-	-	-	-	8%
American Indian	-	-	722	-	-	-	-	-	-	12%
Asian	-	-	751	-	-	-	-	-	-	54%
Two or More Races	-	-	724	-	-	-	-	-	-	20%
Students with Disability	-	-	709	-	-	-	-	-	-	4%
English Language Learners	-	-	710	-	-	-	-	-	-	6%
Economically Disadvantaged Students	-	-	718	-	-	-	-	-	-	8%

ACADEMIC ACHIEVEMENT

MONMOUTH
SPRING LAKE HEIGHTS BORO

GRADE SPAN KG-08

SPRING LAKE HEIGHTS ELEMENTARY SCHOOL
1110 HIGHWAY NO 71
SPRING LAKE HEIGHTS, NJ 07762-2009

2015 National Assessment Educational Progress (NAEP)

The National Assessment of Educational Progress (NAEP) is the largest national assessment of what our nation’s students know and can do. NAEP assesses fourth-, eighth-, and twelfth-grade students in subjects such as reading, mathematics, science, and writing. The reporting of NAEP scores on state report cards is a federal mandate. The results of NAEP are also published as the Nation’s Report Card, and are available for the nation, states, and, in some cases, urban districts. The NAEP scores on the report card include grades four and eight 2015 reading and math scores for New Jersey which are the last scores published.

For subgroup outcomes, visit:

- Reading Grade 4 <http://www.nj.gov/education/pr/1415/naep/naep4read.html>
- Reading Grade 8 <http://www.nj.gov/education/pr/1415/naep/naep8read.html>
- Math Grade 4 <http://www.nj.gov/education/pr/1415/naep/naep4math.html>
- Math Grade 8 <http://www.nj.gov/education/pr/1415/naep/naep8math.html>

For more information, visit <http://nces.ed.gov/nationsreportcard/>

Proficiency Percentages

Subject	Grade	State/Nation	Below Basic	Basic	Proficient	Advanced
Reading	Grade 4	State (NJ)	25	33	31	12
	Grade 4	Nation	31	33	27	9
	Grade 8	State (NJ)	20	39	35	6
	Grade 8	Nation	24	42	31	4
Math	Grade 4	State (NJ)	14	39	38	9
	Grade 4	Nation	18	42	33	7
	Grade 8	State (NJ)	21	32	30	16
	Grade 8	Nation	29	38	25	8

ACADEMIC ACHIEVEMENT

MONMOUTH
SPRING LAKE HEIGHTS BORO

GRADE SPAN KG-08

SPRING LAKE HEIGHTS ELEMENTARY SCHOOL
1110 HIGHWAY NO 71
SPRING LAKE HEIGHTS, NJ 07762-2009

NJASK Results - Science Grade Level - 04

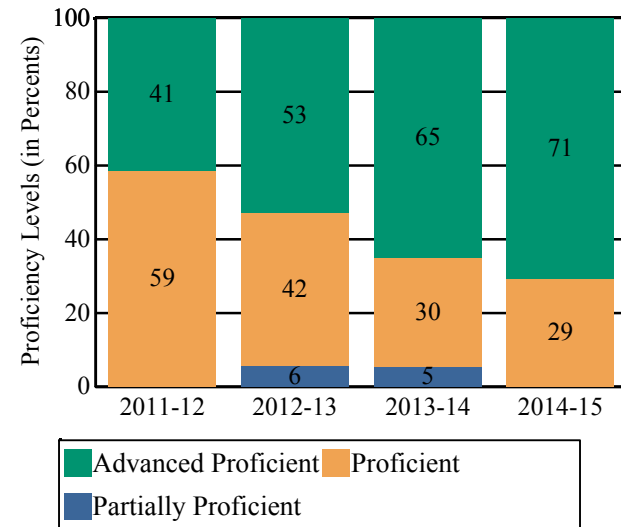
This table presents the grade level proficiency results, as measured by NJASK, in Advanced Proficient, Proficient, and Partially Proficient categories for all appropriate subgroups.

Subgroups	Advanced Proficient	Proficient	Partially Proficient
Schoolwide	71%	29%	0%
White	69%	31%	0%
African American	-	-	-
Hispanic	-	-	-
American Indian	-	-	-
Asian	-	-	-
Two or More Races	-	-	-
Students with Disability	-	-	-
English Language Learners	-	-	-
Economically Disadvantaged Students	-	-	-

Data is presented for subgroups when the count is high enough under ESEA Waiver suppression rules.

NJASK Proficiency Trends - Science - Grade Level - 04

This graph presents the grade level outcomes in the categories of Advanced Proficient, Proficient, and Partially Proficient over the last four years.



ACADEMIC ACHIEVEMENT

MONMOUTH
SPRING LAKE HEIGHTS BORO

GRADE SPAN KG-08

SPRING LAKE HEIGHTS ELEMENTARY SCHOOL
1110 HIGHWAY NO 71
SPRING LAKE HEIGHTS, NJ 07762-2009

NJASK Results - Science Grade Level - 08

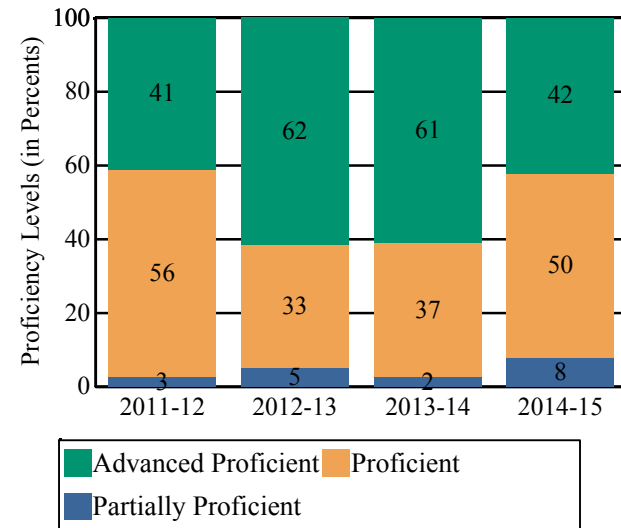
NJASK Proficiency Trends - Science - Grade Level - 08

This table presents the grade level proficiency results, as measured by NJASK, in Advanced Proficient, Proficient, and Partially Proficient categories for all appropriate subgroups.

This graph presents the grade level outcomes in the categories of Advanced Proficient, Proficient, and Partially Proficient over the last four years.

Subgroups	Advanced Proficient	Proficient	Partially Proficient
Schoolwide	42%	50%	8%
White	44%	47%	8%
African American	-	-	-
Hispanic	-	-	-
American Indian	-	-	-
Asian	-	-	-
Two or More Races	-	-	-
Students with Disability	-	-	-
English Language Learners	-	-	-
Economically Disadvantaged Students	-	-	-

Data is presented for subgroups when the count is high enough under ESEA Waiver suppression rules.



COLLEGE AND CAREER READINESS

MONMOUTH
SPRING LAKE HEIGHTS BORO

GRADE SPAN KG-08

SPRING LAKE HEIGHTS ELEMENTARY SCHOOL
1110 HIGHWAY NO 71
SPRING LAKE HEIGHTS, NJ 07762-2009

Students in both elementary and middle schools begin to demonstrate college readiness behaviors long before they even enter high school. Among the behaviors that research has shown to be indicative of successfully graduating high school is regularly attending school. For all elementary and middle schools, this includes the percentage of students that are chronically absent each year, defined as missing more than 10% of possible school days. Also presented is the percentage of students participating in Visual and Performing Arts coursework and Algebra I course outcomes.

Algebra I Course Enrollment

This table presents the count of students in this school who were reported in the Algebra I course code in NJSMART and the count of students who took the Algebra I test of PARCC.

Algebra I Enrollment Count	Algebra I PARCC Test Count
33	22

Algebra I Test Taking

This table presents the percentage of students, as reported in NJSMART, who earned a C or higher in their Algebra I course and the percentage of students who met or exceeded expectation on the Algebra I test of PARCC.

Algebra I Percent C or Better	Algebra I PARCC Percent Met or Exceeded Expectation
100.0%	72.7%

- Data Suppressed to protect the confidentiality of students

COLLEGE AND CAREER READINESS

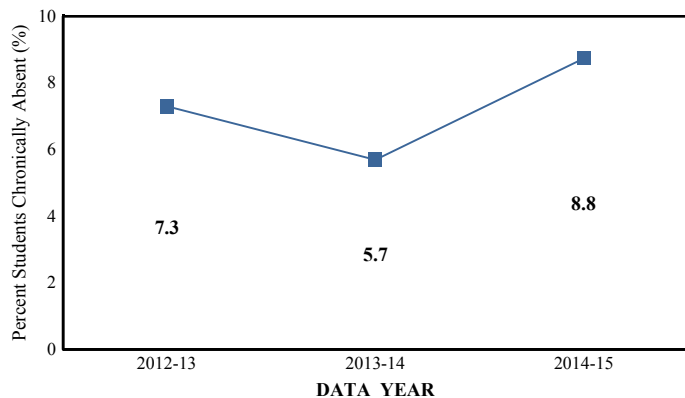
MONMOUTH
SPRING LAKE HEIGHTS BORO

SPRING LAKE HEIGHTS ELEMENTARY SCHOOL
1110 HIGHWAY NO 71
SPRING LAKE HEIGHTS, NJ 07762-2009

GRADE SPAN KG-08

Chronic Absenteeism Trend

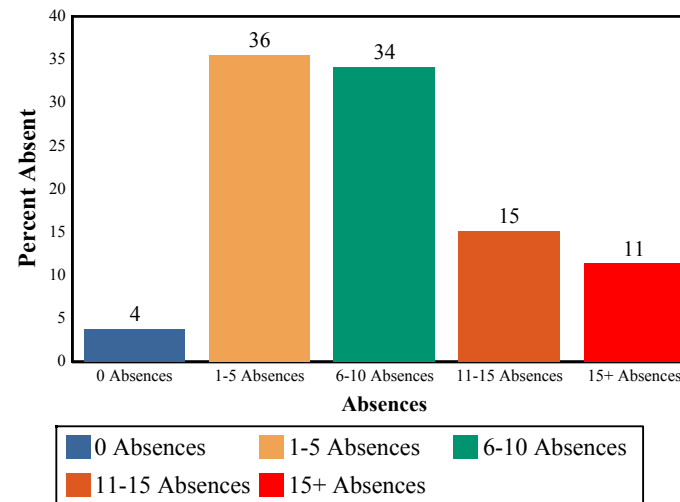
This graph presents the percentage of the enrolled students who were chronically absent for the past three years.



Chronic Absenteeism for 2014-15	8.75%
--	--------------

Absenteeism

The chart below presents the percentage of students who were absent in each category of absence: 0 absences, 1- 5 absences, 6 - 10 absences, 11 - 15 absences, and more than 15 absences. An absence is defined as being 'not present' and includes the days missed regardless of whether they were determined to be excused or unexcused by the school.



COLLEGE AND CAREER READINESS

MONMOUTH
SPRING LAKE HEIGHTS BORO

GRADE SPAN KG-08

SPRING LAKE HEIGHTS ELEMENTARY SCHOOL
1110 HIGHWAY NO 71
SPRING LAKE HEIGHTS, NJ 07762-2009

Visual and Performing Arts

The chart below contains the percentage of students who were enrolled in at least one Dance, Drama/Theater, Music or Visual Arts class in this school. The last row shows the percentage of students who were enrolled in any Visual and Performing Arts classes in the school.

Percent of Students Enrolled	School	State
Dance	N/R	1.6%
Drama/Theater	11.4%	3.9%
Music	42.3%	66.0%
Visual Arts	67.5%	71.1%
Total: All Visual and Performing Arts	87.0%	89.8%

N/R - Data Not Reported

STUDENT GROWTH

MONMOUTH

SPRING LAKE HEIGHTS BORO

GRADE SPAN KG-08

SPRING LAKE HEIGHTS ELEMENTARY SCHOOL

1110 HIGHWAY NO 71

SPRING LAKE HEIGHTS, NJ 07762-2009

This section of the performance report presents data about student growth, utilizing the Student Growth Percentile Methodology (SGP). SGP creates a measure of how students progressed in grades 4 through 8 in Language Arts Literacy and in grades 4 through 7 in Math when compared to other students with a similar test score history. A short video explaining the methodology can be found here: <http://www.state.nj.us/education/njsmart/performance/>

The below chart consist of five columns with measures. The first column - Schoolwide Performance - presents the schoolwide median growth score in either English Language Arts/Literacy or Mathematics for all students in the school. The second column - Peer Percentile - indicates how the school's growth performance compares to its group of peer schools. The third column - Statewide Percentile - indicates how a school compares to schools across the state. The last column - Met Target? - indicates whether the school's performance met or exceeded the statewide target, which was set to 35.

The fourth row presents the averages of the peer school percentiles, the averages of statewide percentiles, the percentage of statewide targets met.

Student Growth Indicators	Schoolwide Performance	Peer Percentile	Statewide Percentile	Statewide Target	Met Target?
Student Growth on Language Arts	67	91	94	35	YES
Student Growth on Math	63	94	90	35	YES
		93	92		100%

Student Growth

This table presents for all students with growth scores the interaction between their performance on PARCC and their growth scores. For example, in the top left cell the percentage of students who are both in Level 1 - Did not yet meet expectations AND also demonstrating low growth is displayed.

Language Arts

(Expectations)	GROWTH		
	Low	Typical	High
Did Not Yet Meet	3%	1%	0%
Partially Met	2%	2%	0%
Approached	9%	6%	5%
Met	8%	12%	30%
Exceeded	1%	4%	18%

Math

(Expectations)	GROWTH		
	Low	Typical	High
Did Not Yet Meet	3%	0%	0%
Partially Met	6%	5%	2%
Approached	6%	19%	14%
Met	4%	13%	26%
Exceeded	0%	0%	1%

Low Growth is defined as an Student Growth Percentile score less than 35.
Typical Growth is defined as an Student Growth Percentile score between 35 and 65.
High Growth is defined as a Student Growth Percentile score higher than 65.

WITHIN SCHOOL ACHIEVEMENT GAP

MONMOUTH
SPRING LAKE HEIGHTS BORO

GRADE SPAN KG-08

SPRING LAKE HEIGHTS ELEMENTARY SCHOOL
1110 HIGHWAY NO 71
SPRING LAKE HEIGHTS, NJ 07762-2009

This section of the performance report presents data about the achievement gap that exists within a school - as measured by the difference between the students' scale scores at the 25th and 75th percentile in the school, the Interquartile Range (IQR). Taken together with an understanding of the overall and average achievement levels in the school, the IQR furthers an understanding of the range of student outcomes that exist in a school. A school gap smaller than the state gap indicates that the school's range of student outcomes is narrower than the state's while a school gap larger than the state gap indicates that the school's range of student outcomes is broader than the state's.

Grade Level - 03

PARCC Language Arts 25th %ile vs 75th%ile

This table presents the scale scores associated with students at the bottom (0th percentile), the 25th percentile, the 50th percentile, the 75th percentile and the top (99th percentile) of school's distribution.

Percentile	School Scale Score	State Scale Score
99th	841	850
75th	787	770
50th	761	743
25th	748	715
0th	697	650

	Scale Score Gap - School	Scale Score Gap - State
25th vs 75th Gap	39	55

Grade Level - 03

PARCC MATH 25th %ile vs 75th%ile

This table presents the scale scores associated with students at the bottom (0th percentile), the 25th percentile, the 50th percentile, the 75th percentile and the top (99th percentile) of school's distribution.

Percentile	School Scale Score	State Scale Score
99th	841	850
75th	771	767
50th	756	745
25th	744	722
0th	710	650

	Scale Score Gap - School	Scale Score Gap - State
25th vs 75th Gap	27	45

WITHIN SCHOOL ACHIEVEMENT GAP

MONMOUTH
SPRING LAKE HEIGHTS BORO

GRADE SPAN KG-08

SPRING LAKE HEIGHTS ELEMENTARY SCHOOL
1110 HIGHWAY NO 71
SPRING LAKE HEIGHTS, NJ 07762-2009

Grade Level - 04

PARCC Language Arts 25th %ile vs 75th%ile

This table presents the scale scores associated with students at the bottom (0th percentile), the 25th percentile, the 50th percentile, the 75th percentile and the top (99th percentile) of school's distribution.

Percentile	School Scale Score	State Scale Score
99th	816	850
75th	789	773
50th	776	750
25th	753	728
0th	718	650

	Scale Score Gap - School	Scale Score Gap - State
25th vs 75th Gap	36	45

Grade Level - 05

PARCC Language Arts 25th %ile vs 75th%ile

This table presents the scale scores associated with students at the bottom (0th percentile), the 25th percentile, the 50th percentile, the 75th percentile and the top (99th percentile) of school's distribution.

Percentile	School Scale Score	State Scale Score
99th	832	850
75th	775	773
50th	759	751
25th	747	728
0th	686	650

	Scale Score Gap - School	Scale Score Gap - State
25th vs 75th Gap	28	45

Grade Level - 04

PARCC MATH 25th %ile vs 75th%ile

This table presents the scale scores associated with students at the bottom (0th percentile), the 25th percentile, the 50th percentile, the 75th percentile and the top (99th percentile) of school's distribution.

Percentile	School Scale Score	State Scale Score
99th	785	850
75th	763	764
50th	752	742
25th	737	721
0th	700	650

	Scale Score Gap - School	Scale Score Gap - State
25th vs 75th Gap	26	43

Grade Level - 05

PARCC MATH 25th %ile vs 75th%ile

This table presents the scale scores associated with students at the bottom (0th percentile), the 25th percentile, the 50th percentile, the 75th percentile and the top (99th percentile) of school's distribution.

Percentile	School Scale Score	State Scale Score
99th	784	850
75th	756	763
50th	746	743
25th	731	723
0th	693	650

	Scale Score Gap - School	Scale Score Gap - State
25th vs 75th Gap	25	40

WITHIN SCHOOL ACHIEVEMENT GAP

MONMOUTH
SPRING LAKE HEIGHTS BORO

Grade Level - 06

PARCC Language Arts 25th %ile vs 75th%ile

This table presents the scale scores associated with students at the bottom (0th percentile), the 25th percentile, the 50th percentile, the 75th percentile and the top (99th percentile) of school's distribution.

Percentile	School Scale Score	State Scale Score
99th	802	850
75th	781	770
50th	760	749
25th	742	726
0th	696	650

	Scale Score Gap - School	Scale Score Gap - State
25th vs 75th Gap	39	44

Grade Level - 07

PARCC Language Arts 25th %ile vs 75th%ile

This table presents the scale scores associated with students at the bottom (0th percentile), the 25th percentile, the 50th percentile, the 75th percentile and the top (99th percentile) of school's distribution.

Percentile	School Scale Score	State Scale Score
99th	824	850
75th	786	776
50th	762	751
25th	746	724
0th	668	650

	Scale Score Gap - School	Scale Score Gap - State
25th vs 75th Gap	40	52

SPRING LAKE HEIGHTS ELEMENTARY SCHOOL
1110 HIGHWAY NO 71
SPRING LAKE HEIGHTS, NJ 07762-2009

Grade Level - 06

PARCC MATH 25th %ile vs 75th%ile

This table presents the scale scores associated with students at the bottom (0th percentile), the 25th percentile, the 50th percentile, the 75th percentile and the top (99th percentile) of school's distribution.

Percentile	School Scale Score	State Scale Score
99th	805	850
75th	769	763
50th	751	742
25th	732	721
0th	696	650

	Scale Score Gap - School	Scale Score Gap - State
25th vs 75th Gap	37	42

Grade Level - 07

PARCC MATH 25th %ile vs 75th%ile

This table presents the scale scores associated with students at the bottom (0th percentile), the 25th percentile, the 50th percentile, the 75th percentile and the top (99th percentile) of school's distribution.

Percentile	School Scale Score	State Scale Score
99th	N/A	850
75th	N/A	759
50th	N/A	740
25th	N/A	720
0th	N/A	650

	Scale Score Gap - School	Scale Score Gap - State
25th vs 75th Gap	N/A	39

WITHIN SCHOOL ACHIEVEMENT GAP

MONMOUTH
SPRING LAKE HEIGHTS BORO

Grade Level - 08

PARCC Language Arts 25th %ile vs 75th%ile

This table presents the scale scores associated with students at the bottom (0th percentile), the 25th percentile, the 50th percentile, the 75th percentile and the top (99th percentile) of school's distribution.

Percentile	School Scale Score	State Scale Score
99th	840	850
75th	805	777
50th	790	751
25th	770	723
0th	688	650

	Scale Score Gap - School	Scale Score Gap - State
25th vs 75th Gap	35	54

SPRING LAKE HEIGHTS ELEMENTARY SCHOOL
1110 HIGHWAY NO 71
SPRING LAKE HEIGHTS, NJ 07762-2009

Grade Level - 08

PARCC MATH 25th %ile vs 75th%ile

This table presents the scale scores associated with students at the bottom (0th percentile), the 25th percentile, the 50th percentile, the 75th percentile and the top (99th percentile) of school's distribution.

Percentile	School Scale Score	State Scale Score
99th	782	850
75th	765	748
50th	730	726
25th	723	704
0th	704	650

	Scale Score Gap - School	Scale Score Gap - State
25th vs 75th Gap	42	44

SCHOOL CLIMATE

MONMOUTH
SPRING LAKE HEIGHTS BORO

SPRING LAKE HEIGHTS ELEMENTARY SCHOOL
1110 HIGHWAY NO 71
SPRING LAKE HEIGHTS, NJ 07762-2009

GRADE SPAN KG-08

Length of School Day

This table presents the amount of time a school is in session for a typical student on a normal school day.

	School
2014-15	6 Hrs. 37 Mins.

Student Suspension Rate

This table presents the percentage of students who were suspended one or more times during the school year.

	School
2014-15	0.0%

Instructional Time

This table presents the amount of time that a typical student is engaged in instructional activities under the supervision of a certified teacher.

2014-15	School
Full Time	6 Hrs. 7 Mins.
Shared Time	0 Hrs. 0 Mins.

Student Expulsions

This table presents the number of students who were expelled from the school and district during the school year.

	School
2014-15	0

Student to Staff Ratio

This table presents the count of students per faculty member or administrator in the school. All staff are counted in full-time equivalents.

2014-15	School
Faculty	10
Administrators	246

SCHOOL PEER GROUP
MONMOUTH
SPRING LAKE HEIGHTS BORO

SPRING LAKE HEIGHTS ELEMENTARY SCHOOL
1110 HIGHWAY NO 71
SPRING LAKE HEIGHTS, NJ 07762-2009

GRADE SPAN KG-08

This table presents the list of peer schools in alphabetical order by county name that was created specifically for this school (highlighted in yellow). Peer schools are drawn from across the state and represent schools that have similar grade configurations and that are educating students of similar demographic characteristics, as measured by enrollment in Free/Reduced Lunch Programs, Limited English Proficiency or Special Education Programs.

<u>COUNTY NAME</u>	<u>DISTRICT NAME</u>	<u>SCHOOL NAME</u>	<u>CDS CODE</u>	<u>GRADES PAN</u>	<u>ECONOMICALLY DISADVANTAGED</u>	<u>ENGLISH LANGUAGE LEARNERS</u>	<u>SPECIAL EDUCATION</u>
ATLANTIC	NORTHFIELD CITY	NORTHFIELD COMMUNITY MIDDLE SCHOOL	01-3720-056	05-08	22.3%	1.6%	18.9%
BERGEN	HASBROUCK HEIGHTS BORO	HASBROUCK HEIGHTS MIDDLE SCHOOL	03-2080-055	06-08	17.4%	1.4%	16.7%
BERGEN	MAHWAH TWP	RAMAPO RIDGE	03-2900-076	06-08	10.6%	0.9%	12.5%
BERGEN	NEW MILFORD BORO	DAVID E. OWENS MIDDLE SCHOOL	03-3550-085	06-08	17.5%	1.7%	16.4%
BURLINGTON	BURLINGTON TWP	BURLINGTON TOWNSHIP MIDDLE SCHOOL AT SPRINGSIDE	05-0620-051	06-08	24.6%	1.1%	13.9%
BURLINGTON	WESTAMPTON	WESTAMPTON TOWNSHIP MIDDLE SCHOOL	05-5720-050	PK-08	22.9%	1.1%	13.8%
CAPE MAY	OCEAN CITY	OCEAN CITY INTERMEDIATE SCHOOL	09-3780-060	04-08	28.8%	0%	11.8%
CUMBERLANI	GREENWICH TWP	MORRIS GOODWIN SCHOOL	11-1820-060	KG-08	20.8%	0%	9.4%
ESSEX	MONTCLAIR TOWN	MT. HEBRON MIDDLE SCHOOL	13-3310-127	06-08	23.2%	1.9%	19.4%
GLOUCESTER	LOGAN TWP	LOGAN MIDDLE SCHOOL	15-2750-300	06-08	21.8%	0%	7.7%
HUNTERDON	CLINTON TOWN	CLINTON PUBLIC SCHOOL	19-0910-030	PK-08	11.6%	1.9%	15.2%
MERCER	HAMILTON TWP	EMILY C REYNOLDS MIDDLE SCHOOL	21-1950-080	06-08	27.8%	0.9%	16.6%
MIDDLESEX	EDISON TWP	JOHN ADAMS MIDDLE SCHOOL	23-1290-055	06-08	13.4%	0%	5.8%
MIDDLESEX	SOUTH BRUNSWICK TWP	CROSSROADS SOUTH MIDDLE SCHOOL	23-4860-075	06-08	14.4%	1%	13.1%
MIDDLESEX	SPOTSWOOD BORO	SPOTSWOOD MEMORIAL MIDDLE SCHOOL	23-4970-090	06-08	21.8%	0.3%	9.8%
MONMOUTH	DEAL BORO	DEAL ELEMENTARY SCHOOL	25-1000-040	KG-08	11%	0%	4.9%
MONMOUTH	SPRING LAKE HEIGHTS BORO	SPRING LAKE HEIGHTS ELEMENTARY SCHOOL	25-4990-050	KG-08	13.6%	0.9%	10.7%
MORRIS	LINCOLN PARK BORO	LINCOLN PARK MIDDLE SCHOOL	27-2650-040	PK-08	19.7%	1.5%	14.7%
MORRIS	RIVERDALE BORO	RIVERDALE SCHOOL	27-4440-050	PK-08	17.6%	0.9%	12%
MORRIS	ROCKAWAY TWP	COPELAND MIDDLE SCHOOL	27-4490-015	06-08	15.9%	2%	19.2%
OCEAN	JACKSON TWP	CHRISTA MCAULIFFE MIDDLE SCHOOL	29-2360-048	06-08	29.8%	1%	16.2%

SCHOOL PEER GROUP

MONMOUTH

SPRING LAKE HEIGHTS BORO

SPRING LAKE HEIGHTS ELEMENTARY SCHOOL

1110 HIGHWAY NO 71

SPRING LAKE HEIGHTS, NJ 07762-2009

GRADE SPAN KG-08

OCEAN	PLUMSTED TWP	NEW EGYPT MIDDLE SCHOOL	29-4190-080	06-08	22.8%	1%	14.6%
OCEAN	POINT PLEASANT BEACH BORO	G. HAROLD ANTRIM ELEMENTARY SCHOOL	29-4220-060	PK-08	19.8%	2.6%	20.4%
PASSAIC	BLOOMINGDALE BORO	WALTER T. BERGEN MIDDLE SCHOOL	31-0420-050	05-08	17.5%	1.2%	15.5%
PASSAIC	TOTOWA BORO	WASHINGTON PARK SCHOOL	31-5200-060	03-08	27%	1%	14.8%
SALEM	MANNINGTON TWP	MANNINGTON TOWNSHIP ELEMENTARY SCHOOL	33-2950-050	PK-08	28.6%	0%	10.2%
UNION	GARWOOD BORO	LINCOLN	39-1710-050	PK-08	18.6%	0.8%	14.6%
UNION	SPRINGFIELD TWP	FLORENCE M. GAUDINEER MIDDLE SCHOOL	39-5000-060	06-08	12.8%	1.4%	13.6%
WARREN	LOPATCONG TWP	LOPATCONG TOWNSHIP MIDDLE SCHOOL	41-2790-060	05-08	17.4%	0%	10.7%
WARREN	POHATCONG TWP	POHATCONG TOWNSHIP SCHOOL	41-4200-040	PK-08	21.4%	0%	9.3%
WARREN	WARREN HILLS REGIONAL	WARREN HILLS REGIONAL MIDDLE SCHOOL	41-5465-060	07-08	23%	0.7%	15%