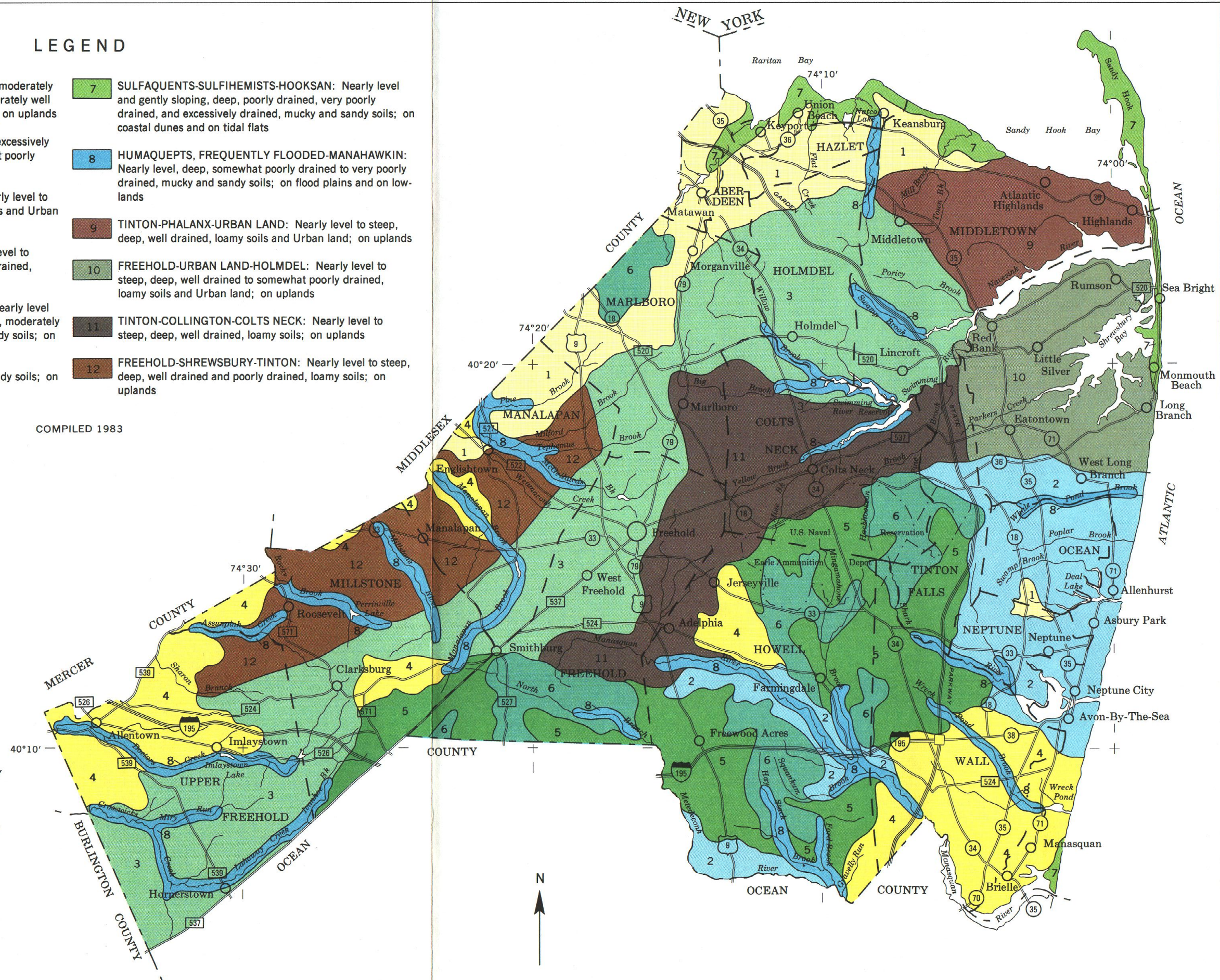


LEGEND

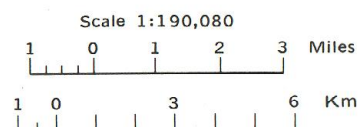
- | | |
|--|---|
| <p>1 KLEJ-KEYPORT-URBAN LAND: Nearly level to moderately steep, deep, somewhat poorly drained and moderately well drained, sandy and clayey soils and Urban land; on uplands</p> <p>2 EVESBORO-KLEJ: Nearly level to steep, deep, excessively drained, moderately well drained, and somewhat poorly drained, sandy soils; on uplands</p> <p>3 FREEHOLD-URBAN LAND-COLLINGTON: Nearly level to moderately steep, deep, well drained, loamy soils and Urban land; on uplands</p> <p>4 SASSAFRAS-DOWNER-WOODSTOWN: Nearly level to steep, deep, well drained and moderately well drained, loamy soils; on uplands</p> <p>5 LAKEWOOD-LAKEHURST-EVESBORO-KLEJ: Nearly level to moderately sloping, deep, excessively drained, moderately well drained, and somewhat poorly drained, sandy soils; on uplands</p> <p>6 ATSION: Nearly level, deep, poorly drained, sandy soils; on upland flats</p> | <p>7 SULFAQUENTS-SULFIHEMISTS-HOOKSAN: Nearly level and gently sloping, deep, poorly drained, very poorly drained, and excessively drained, mucky and sandy soils; on coastal dunes and on tidal flats</p> <p>8 HUMAQUEPTS, FREQUENTLY FLOODED-MANAHAWKIN: Nearly level, deep, somewhat poorly drained to very poorly drained, mucky and sandy soils; on flood plains and on low lands</p> <p>9 TINTON-PHALANX-URBAN LAND: Nearly level to steep, deep, well drained, loamy soils and Urban land; on uplands</p> <p>10 FREEHOLD-URBAN LAND-HOLMDEL: Nearly level to steep, deep, well drained to somewhat poorly drained, loamy soils and Urban land; on uplands</p> <p>11 TINTON-COLLINGTON-COLTS NECK: Nearly level to steep, deep, well drained, loamy soils; on uplands</p> <p>12 FREEHOLD-SHREWSBURY-TINTON: Nearly level to steep, deep, well drained and poorly drained, loamy soils; on uplands</p> |
|--|---|

COMPILED 1983



U.S. DEPARTMENT OF AGRICULTURE
SOIL CONSERVATION SERVICE
NEW JERSEY AGRICULTURAL EXPERIMENT STATION
COOK COLLEGE, RUTGERS AND THE STATE UNIVERSITY
THE NEW JERSEY DEPARTMENT OF AGRICULTURE,
STATE SOIL CONSERVATION COMMITTEE

GENERAL SOIL MAP MONMOUTH COUNTY, NEW JERSEY



Each area outlined on this map consists of more than one kind of soil. The map is thus meant for general planning rather than a basis for decisions on the use of specific tracts.

NEW YORK

Inset, sheet 3

Inset, sheet 19

Inset, sheet 60

Inset, sheet 55

Inset, sheet 49

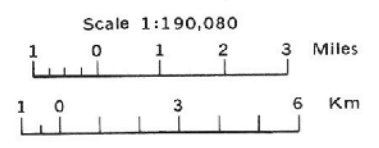
Inset, sheet 38

Inset, sheet 30

Inset, sheet 24

Inset, sheet 50

INDEX TO MAP SHEETS
MONMOUTH COUNTY, NEW JERSEY



Inset, sheet 59

