

**FILE A CLAIM:**

New users register here

Existing users log in here (and get your 1099-G)

**ALREADY FILED?**

Check claim status

Certify for weekly benefits

[Home](#) / [Before You Apply](#) / [About Unemployment Insurance](#) / [Step-by-Step Guide](#)  
/ How to apply online for Unemployment Insurance benefits

# How to apply online for Unemployment Insurance benefits



1

**Get your information ready.**

It'll be easier to fill out your application that way.

[LEARN MORE >](#)

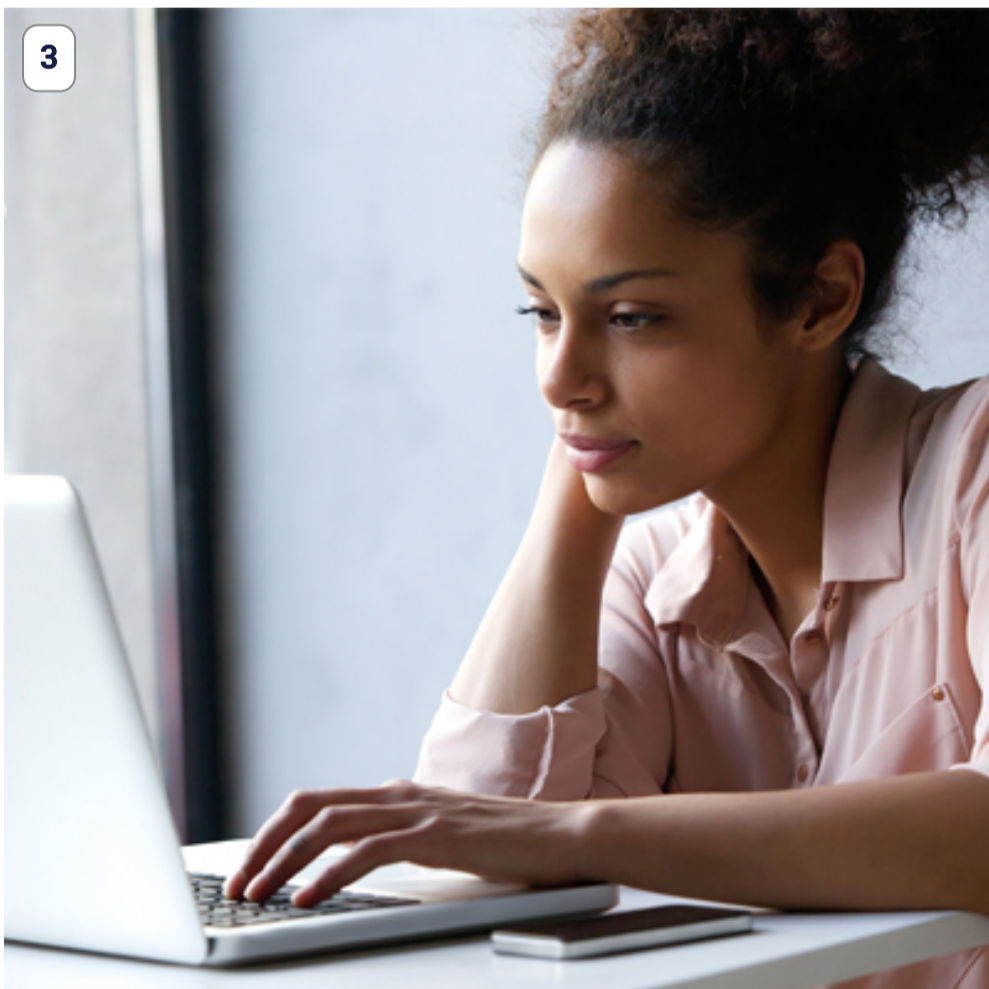


2

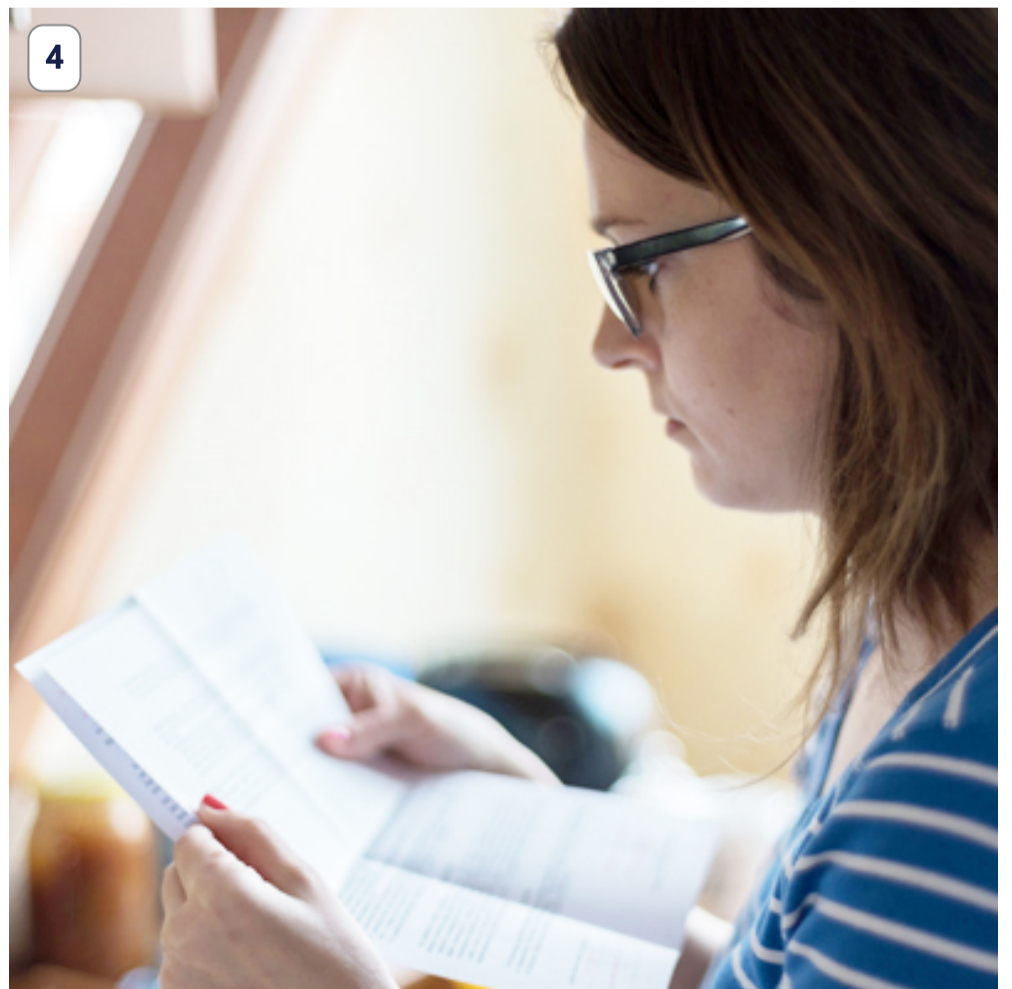
**Create an account.**

It's a simple, easy, and secure process.

[LEARN MORE >](#)



3



4

**Use our online tools.**

File a new claim, update your information, and more.

[LEARN MORE >](#)

**Check your mailbox.**

We may send forms and notices by postal mail as well as email.

[LEARN MORE >](#)



**Certify for your benefits.**

You need to do this each week.

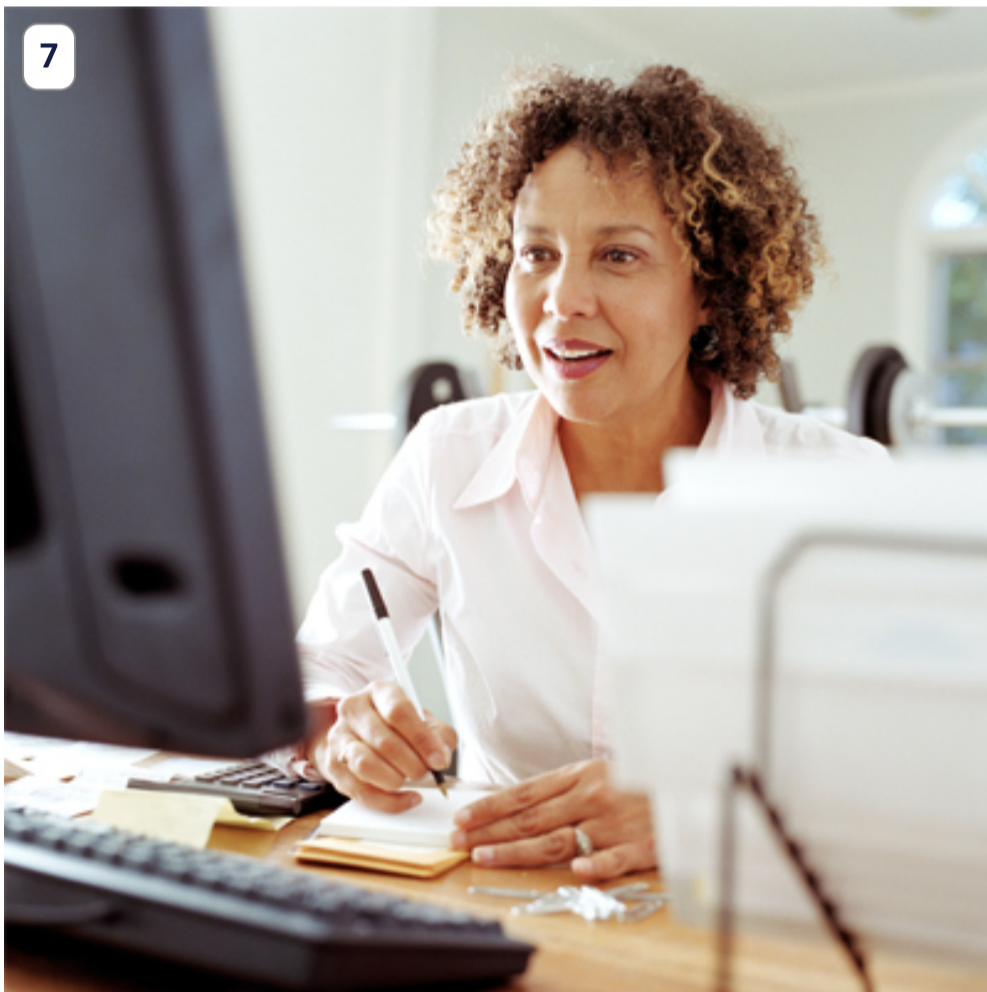
[LEARN MORE >](#)



**Verify your identity.**

For your protection, we take steps to verify your identity.

[LEARN MORE >](#)



**Start your job search.**

While getting benefits, you need to be actively looking for work.

[LEARN MORE >](#)



**Explore training options.**

You might want to take advantage of our approved training programs.

[LEARN MORE >](#)



**Adjust your federal income tax withholding.**

Doing so can help offset future tax liabilities.

[LEARN MORE >](#)



**Add dependents to your claim, if they qualify.**

Your partner and/or children must meet certain requirements.

[LEARN MORE >](#)



**Respond to our emails.**

If we ask for more information and you don't reply, you may be ineligible for benefits.

[LEARN MORE >](#)

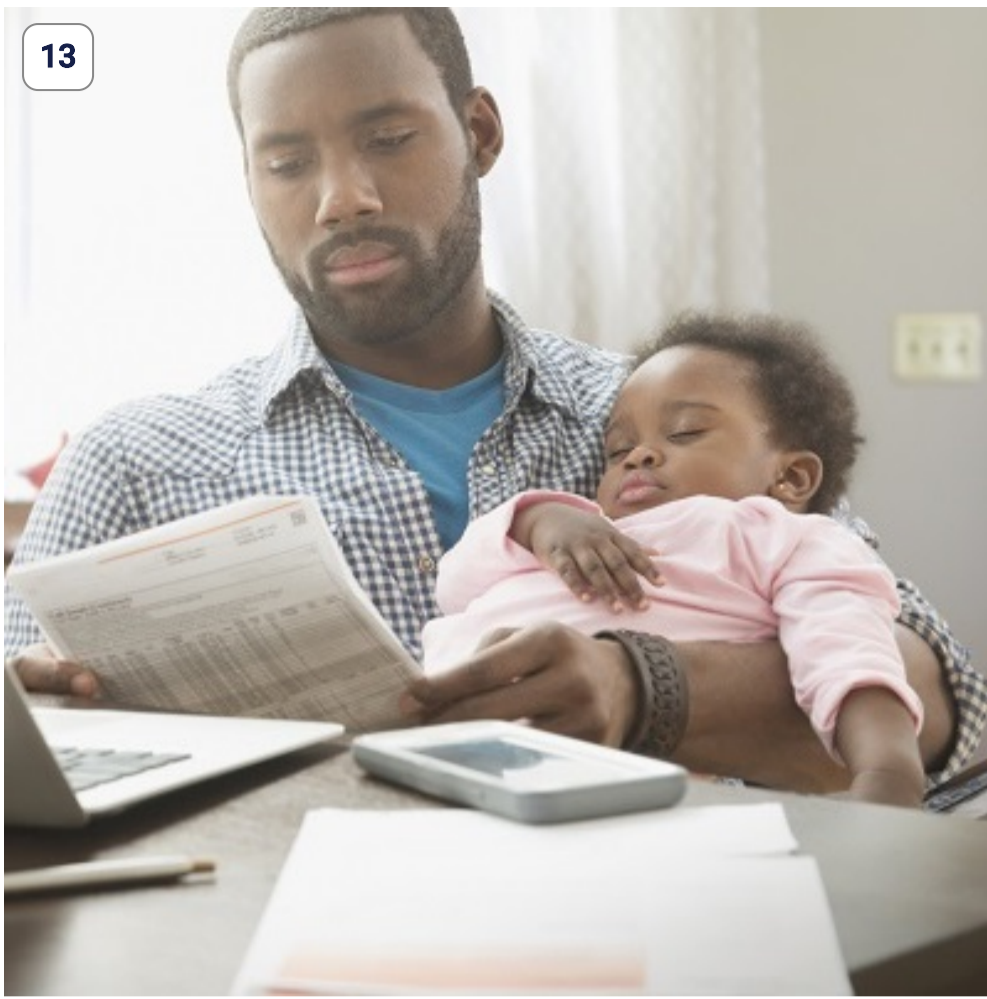


**Need more help?**

Learn how to appeal a determination, reopen a claim, end your benefits, and more.

[LEARN MORE >](#)

13



**Benefits Ended?**

If you need additional support, there may be resources available.

[LEARN MORE >](#)

**Division of Unemployment Insurance**

Home

Before You Apply

If You Already Filed a Claim

Tools for Jobseekers

Tools for Employers

Appeals

Need Help?

**Statewide**

Governor Phil Murphy

Lt. Governor Tahesha Way

NJ Home

Services A to Z

Departments/Agencies

Contact Us

Privacy Notice

Legal Statement & Disclaimers

Accessibility Statement



Copyright © State of New Jersey, 1996-2025  
Department of Labor and Workforce Development

