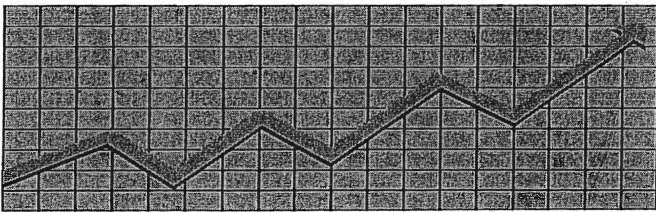


974.905
044.4
c.1

**State of New Jersey
Department of Human Services
Division of Family Development**

**CURRENT
PROGRAM
STATISTICS**



May 2004
Jeanette Page-Hawkins, Director

PROPERTY OF
NEW JERSEY STATE LIBRARY

FEB 17 2005

185 W. STATE ST. PO BOX 520
TRENTON, NJ 08625-0520

TABLE OF CONTENTS

HIGHLIGHTS:

WFNJ/TANF 2

TANF PARTICIPATION RATE 2

FOOD STAMP PROGRAM..... 3

EMERGENCY ASSISTANCE 4

GENERAL ASSISTANCE..... 4

CHILD SUPPORT AND PATERNITY..... 5

STATISTICS- BY STATE, COUNTY, & COUNTY POPULATION-DENSITY STRATUM:. 6

 Figure 1: WFNJ/TANF Families (NJ Statewide) May 2002 to 2004 6

 Figure 2: WFNJ/TANF Families (by County & Population-Density Stratum)- May 2004 7

 Figure 3: TANF Participation Rates (by County & Population-Density Stratum)-May 2004 8

 Figure 4: TANF County Participation Rates Above & Below NJ Statewide Average 9

 Figure 5: Food Stamp Program Households/Persons (NJ Statewide) May 2002 to 2004 10

 Figure 6: Food Stamp Recipient Trends (NJ Statewide) May 2002 to 2004..... 11

 Figure 7: Food Stamp Program Households/Persons (by County & Population-Density Stratum)-
 May 2004 12

 Figure 8: TANF Emergency Assistance Program (NJ Statewide) May 2002 to 2004 13

 Figure 9: TANF Emergency Assistance Program (by County & Population-Density Stratum)- May
 2004..... 14

 Figure 10: General Assistance Program (NJ Statewide) May 2002 to 2004 15

 Figure 11: General Assistance Program (by County & Population-Density Stratum)-May 2004 .. 16

 Figure 12: Child Support & Paternity Distributions (NJ Statewide) FFY 2004..... 17

 Figure 13: Child Support & Paternity Cases Open by County & Population-Density Stratum- (1Q
 2004) 18

 Figure 14: Child Support & Paternity Cases Remaining Open (1Q 2004)..... 19

 Figure 15: WFNJ Statistical Summary 20

ACRONYMS 21

EXPLANATORY NOTES 21

 County Population-Density Stratum: 22

 WFNJ Statistical Summary (Figure 15)..... 22

WFNJ/TANF (See pages 6-7 for additional information)

- As can be seen from **figure 1** (page 6), during the month of May 2004, the **overall TANF caseload** in the state remained nearly stable with the addition of 81 cases representing a **0.2% increase from last month**. Additionally, the 3-month **statewide caseload** demonstrated a 2.0 percent modest growth while **growing 5.3% since May 2003**.
- The **one-year rolling statewide caseload changes** are also shown, and the **rates of change** have **steadily increased** from **positive 1.4%** for the **May 2002 to May 2003** period as **compared** to the **May 2003 to May 2004** period having the **positive 5.3% increase** mentioned above. Thus, the **decline** in the total number **statewide cases** observed in **2002** from 2001 levels has been **eliminated** during the mid-2003 to 2004 timeframe.
- Of interest, **counties** having the **highest caseload percentage increase since May 2003** include: Two low-population density counties (LD), Sussex County (**18.5% ↑**) and Warren (**20.2% ↑**), as well as medium-density (MD) Gloucester County (**20.9% ↑**) [**figure 2 data-page 7**].
- In contrast**, Cape May (LD), as well as Monmouth County and Ocean County (both MD), effectively **controlled caseload increases** (**-9.8%, -0.2%, and -5.2%, respectively**) during this **one-year period**.
- More recently, the **most active counties** for **1 and 3-month periods** ending May 2004 include:

1 mo ↑ Caseload %	3 mo ↑ Caseload %	1 mo ↓ Caseload %	3 mo ↓ Caseload %
(LD) Hunterdon 7.7%	(LD) Hunterdon 16.7%	(LD) Atlantic (1.5%)	(LD) Cape May (2.8%)
(LD) Warren 3.7%	(LD) Warren 13.8%	(LD) Cape May (1.8%)	(LD) Sussex (2.5%)
(MD) Somerset 2.7%	(HD) Bergen 6.7%	(LD) Cumberland (3.7%)	(MD) Morris (2.3%)

TANF PARTICIPATION RATE (See pages 8-9 for additional information)

- From **figure 3** (page 8), we see that the **TANF participation rate (PR)** for **May 2004** was **34.8%** for the **State** as a whole. This represents a **2.2 percent decrease** from levels in **May 2003** (**34.77% PR** versus **35.54% PR**).
- Higher and lower performing counties** over the year ending **May 2004** are **displayed** below. For example, Hunterdon County (low population-density stratum) residents were the least likely to participate (**11.8% PR**) in the program, although this level increased 41percent from the very low **8.3% PR** occurring in **May 2003**:

↑ Participation		↓ Participation	
May '04 PR	% Change (May '03)	May '04 PR	% Change (May '03)
(LD) Salem 52.3%	(LD) Hunterdon 41.2%	(LD) Hunterdon 11.8%	(LD) Cape May (24.9%)
(MD) Morris 61.6%	(HD) Bergen 11.4%	(MD) Gloucester 21.5%	(LD) Sussex (47.8%)
(MD) Somerset 45.2%	(HD) Essex 9.5%	(HD) Middlesex 22.3%	(LD) Warren (25.6%)

- Counties** with participation rates **above and below** the **State average** are in **figure 4** (page 9). Less than the **top third** of counties (5) in the State had **participation rates above 44 percent**.

FOOD STAMP PROGRAM (See pages 10-12 for additional information)

- **Figure 5** (page 10) reveals that during the month of **May 2004**, **161,803 households and 341,446 persons** (including 168,464 adults and 172,982 children) participated in the Food Stamp Program representing nearly **identical increases of 8.9 and 8.5 percent, respectively, over one year ago (May 2003)**.
- The **one-year rolling statewide changes** are also shown, and the **rates of change** that were **lower during late 2002**, e.g., **~4.9% for households** and **2.9% for total persons** (primarily due to a decrease in the number of WFNJ/TANF households and persons at that time over 2001 data), **have steadily increased** (e.g., rising to 6.8% and 6.1% in May 2003, respectively) reaching levels **1.7 to nearly 3 times higher** (8.9% and 8.5%, respectively) **by May 2004**. This change appears in part to be a result of a **reemergence of WFNJ/TANF participants** to levels **above late 2001 levels (figures 5 & 6- pages 10-11)**. Another important observation is that the rates of change initially favoring households over persons during late 2002 and early 2003, equalized by mid-2003 and have continued in a similar fashion through May 2004.
- In differentiation from the dip and subsequent increase for WFNJ/TANF households and persons described above, **other low income households and persons have steadily increased since 2001 reaching nearly 127 thousand households and 236 thousand persons in May 2004**.
- Notably, **counties** reflected in **figure 7** (page 12) having the **highest total household caseload percentage increase since May 2003** were among the low (LD) and mid-density (MD) strata including Salem (**20.1% ↑**), Morris (**21.9 % ↑**), and Gloucester (**17.4% ↑**) counties while **Hunterdon (LD), Warren (LD), and Monmouth (MD) counties had lighter household caseload increases or a decrease (Hunterdon only)** in the state.
- Of late, the **most active counties during 1 and 3-month periods ending May 2004** include:

Total Households by County			
1 mo ↑ Caseload %	3 mo ↑ Caseload %	1 mo ↓ Caseload %	3 mo ↓ Caseload %
(HD) Passaic 2.0%	(MD) Morris 8.8%	(LD) Hunterdon (1.7%)	(LD) Warren (1.1%)
(HD) Union 1.5%	(HD) Passaic 8.3%	(MD) Ocean (1.9%)	(LD) Cape May (4.4%)
(MD) Morris 1.2%	(HD) Union 5.9%	(LD) Cape May (4.3%)	(LD) Hunterdon (5.8%)
Statewide 0.4%	Statewide 4.6%	Statewide 0.4%	Statewide 4.6%

- Currently, the **most active counties during 1 and 3-month periods ending May 2004** include:

Total Persons (Adults & Children) by County			
1 mo ↑ Caseload %	3 mo ↑ Caseload %	1 mo ↓ Caseload %	3 mo ↓ Caseload %
(HD) Union 2.1%	(MD) Morris 7.9%	(MD) Ocean (1.9%)	(LD) Warren (1.3%)
(HD) Passaic 1.9%	(HD) Passaic 7.8%	(LD) Hunterdon (2.8%)	(LD) Hunterdon (6.5%)
(LD) Atlantic 1.7%	(HD) Bergen 6.3%	(LD) Cape May (4.6%)	(LD) Cape May (6.7%)
Statewide 0.5%	Statewide 4.3%	Statewide 0.5%	Statewide 4.3%

EMERGENCY ASSISTANCE (See pages 13-14 for additional information)

- In May 2004, Emergency Assistance (EA) payments were made for over 5,700 eligible TANF families (figure 8-page 13) and 964 SSI recipients (figure 9-page 14) in New Jersey. For TANF families, this represents a sharp 57.5 percent increase since May 2003 (and 106% since May 2002).
- The one-year rolling statewide caseload changes are also shown, and the rates of change for total EA payments have doubled since late 2002-early 2003 (~24% versus 57.5% currently).
- This recent increase since May 2003 appears to be primarily due to a significant increase in Temporary Rental Assistance (TRA) for 2,601 families.
- Statewide, TRA has dramatically risen 301 percent (over three-times higher rate) since May 2003 while other TANF-EA families (including back rent, back utilities, security deposits, furnishings, clothing, and food allowance, or transitional housing) have increased only 17.3 percent (slightly less than the 2003 rate) over the same time period. This contrasts with emergency shelter placements that have modestly decreased two percent from one year ago and motel placements for 384 families that have more robustly decreased by one-third (33.7%) from their May 2003 levels. This finding would be in agreement with desired goals to reduce motel residence for this population.
- Currently, the most active counties (figure 9) providing total EA since May 2003 include:

Total WFNF/TANF Families Receiving EA by County	
1 Yr ↑ Caseload %	1 Yr. ↓ Caseload %
(LD) Warren 160%	(MD) Monmouth (2.3%)
(MD) Burlington 113%	(HD) Middlesex 9.8%
(HD) Union 134%	(HD) Passaic (2.1%)
Statewide 57.5%	Statewide 57.5%

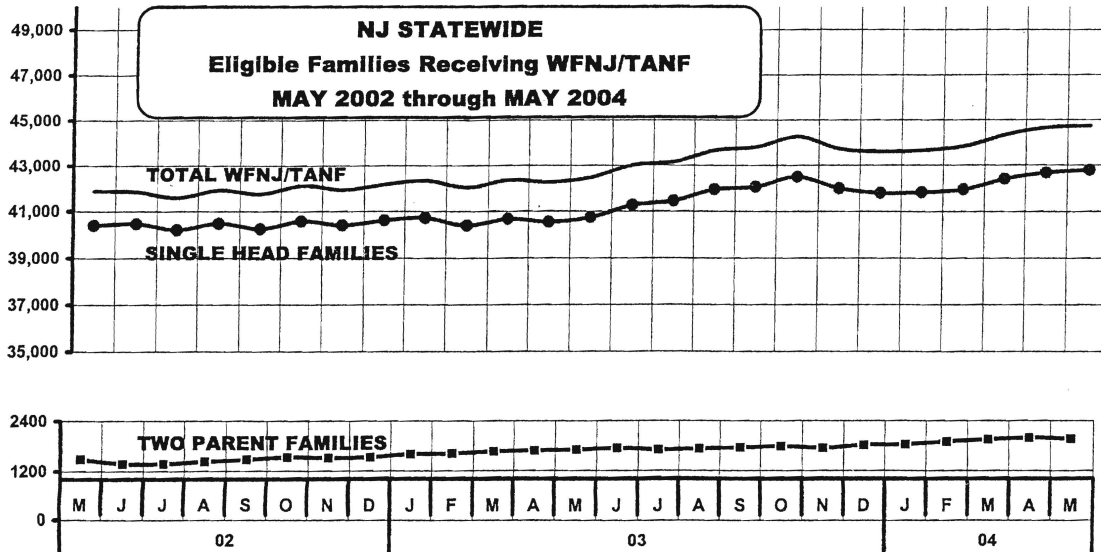
GENERAL ASSISTANCE (See pages 15-16 for additional information)

- A review of figure 10 (page 15) data demonstrates that there has been a 14.1% growth in the total number of general assistance (GA) persons aided (34,532) in New Jersey compared to the prior year ending May 2003 (30,274 GA people).
- However, beginning in December 2002, one can see a divergence appear between the number of employable and unemployable persons aided. This is revealed by the one-year rolling statewide changes which show that the rates of change for employable persons have at times nearly tripled those of unemployable persons (e.g., 23% vs. 8.5% in May 2003, respectively). However, during 2004 this disparity in rates of change significantly diminished, and currently rates between the two groups are nearly identical at about 14 percent. Nevertheless, this has resulted in 5,070 more employable than unemployable persons assisted statewide in May 2004 compared to 2,206 [4,438] more employable persons aided in May 2002 [2003].
- At the county level, figure 11 (page 16) shows that the low and medium-counties including Salem (LD), Burlington, and Morris (both MD), respectively, showed the highest rates of

Figure 1
WFNJ/TANF
PROGRAM

STATEWIDE NUMBER OF APPLICATIONS AND TERMINATIONS DURING MAY 2004,
AND NUMBER OF ELIGIBLE FAMILIES RECEIVING WFNJ/TANF FOR MAY 2004

		MAY 2002 THROUGH MAY 2004					
		Applicn's Approved	Term's	Singl-Head Families	2- Parent Families	Total WFNJ/TANF	%CHNG (1 Yr.)
2002	MAY	3,809	3,005	40,400	1,478	41,878	
	JUN	4,210	2,824	40,469	1,373	41,842	
	JUL	3,754	3,345	40,212	1,371	41,583	
	AUG	4,983	2,720	40,479	1,428	41,907	
	SEP	3,863	3,230	40,263	1,471	41,734	
	OCT	4,215	2,786	40,585	1,526	42,111	(5.7)
	NOV	4,855	2,881	40,412	1,516	41,928	(4.8)
	DEC	3,945	3,047	40,631	1,527	42,158	(4.4)
2002 AVERAGE		4,192	3,500	40,894	1,495	42,389	
2003	JAN	3,706	3,542	40,719	1,603	42,322	(3.6)
	FEB	3,278	3,585	40,397	1,618	42,015	(3.0)
	MAR	3,577	3,253	40,677	1,662	42,339	(2.5)
	APR	3,636	3,728	40,558	1,689	42,247	(1.5)
	MAY	3,771	3,556	40,756	1,706	42,462	1.4
	JUN	3,910	3,366	41,264	1,742	43,006	2.8
	JUL	3,781	3,638	41,448	1,701	43,149	3.8
	AUG	3,843	3,331	41,933	1,728	43,661	4.2
	SEP	3,636	3,503	42,043	1,751	43,794	4.9
	OCT	4,035	3,574	42,474	1,781	44,255	5.1
	NOV	3,379	3,918	41,973	1,743	43,716	4.3
	DEC	3,422	3,546	41,779	1,813	43,592	3.4
2003 AVERAGE		3,665	3,545	41,335	1,711	43,047	
2004	JAN	3,252	3,201	41,814	1,829	43,643	3.1
	FEB	3,334	3,148	41,935	1,894	43,829	4.3
	MAR	3,764	3,254	42,390	1,949	44,339	4.7
	APR	3,832	3,526	42,658	1,987	44,645	5.7
	MAY	3,547	3,466	42,767	1,959	44,726	5.3
2004 AVG (to date)		3,546	3,319	42,313	1,924	44,236	

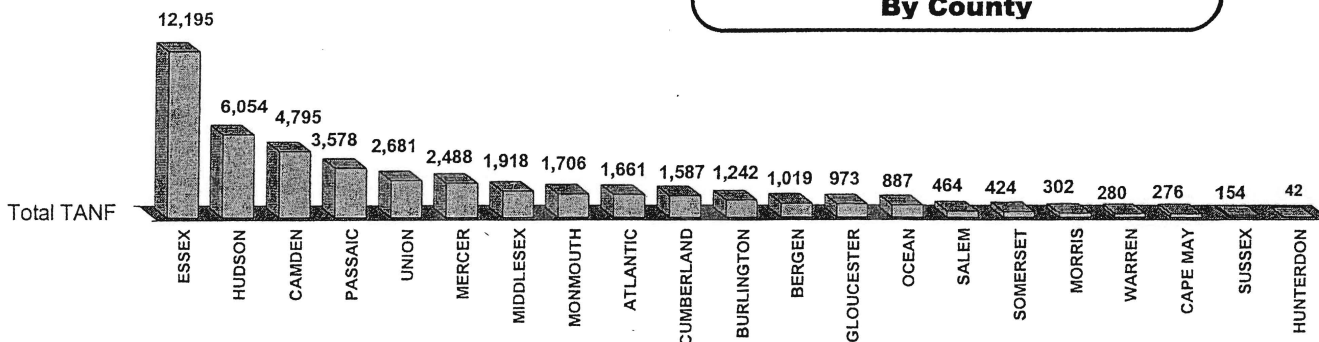


Data is derived from NJ Division of Family Development Ad Hoc Group Special Reports.

Figure 2 NUMBER OF APPLICATIONS AND TERMINATIONS BY COUNTY DURING MAY 2004, AND NUMBER OF ELIGIBLE FAMILIES RECEIVING WFNJ/TANF REPORTED FOR MAY 2004 PROGRAM

County by Pop Density Stratum	Applicn's Approved	Term's **	Singl-Head Families	2-Parent Families	Total WFNJ/TANF	% Chng (1 Mon)	% Chng (3 Mon)	% Chng (1 Yr)
ATLANTIC	130	156	1,592	69	1,661	(1.5) *	2.5	4.7
CAPE MAY	43	48	252	24	276	(1.8) *	(2.8) *	(9.8) *
CUMBERLAND	136	197	1,504	83	1,587	(3.7) *	(0.3)	3.2
HUNTERDON	5	2	42	0	42	7.7 Δ	16.7 Δ	5.0
SALEM	54	55	443	21	464	(0.2)	5.0	15.7
SUSSEX	15	13	144	10	154	1.3	(2.5) *	18.5 Δ
WARREN	31	21	230	50	280	3.7 Δ	13.8 Δ	20.2 Δ
BURLINGTON	118	104	1,171	71	1,242	1.1	2.6	14.8
GLOUCESTER	84	82	911	62	973	0.2	6.2	20.9 Δ
MERCER	182	160	2,400	88	2,488	0.9	1.8	4.9
MONMOUTH	144	147	1,620	86	1,706	(0.2)	2.4	(0.2) *
MORRIS	32	31	277	25	302	0.3	(2.3) *	14.4
OCEAN	63	73	840	47	887	(1.1)	0.6	(5.2) *
SOMERSET	51	40	399	25	424	2.7 Δ	5.0	14.3
BERGEN	73	63	943	76	1,019	1.0	6.7 Δ	15.1
CAMDEN	343	371	4,593	202	4,795	(0.6)	0.5	0.5
ESSEX	1,065	1,027	11,792	403	12,195	0.3	0.6	4.9
HUDSON	344	329	5,799	255	6,054	0.2	2.1	2.5
MIDDLESEX	191	162	1,841	77	1,918	1.5	6.2	11.8
PASSAIC	255	201	3,395	183	3,578	1.5	4.3	8.3
UNION	188	184	2,579	102	2,681	0.1	2.7	7.6
NJ TOTAL	3,547	3,466	42,767	1,959	44,726	0.2	2.0	5.3

**Total WFNJ/TANF Families
MAY 2004
By County**



Data is derived from NJ Division of Family Development Ad Hoc Group Special Reports.

Terminations" include cases that received a benefit in the prior month, but did not receive any TANF benefit for the report month.

igher caseload % change

*=lower caseload % change

FIGURE 3

TANF PARTICIPATION RATES BY COUNTY POPULATION DENSITY STRATUM

MARCH - MAY 2004

County	March	April	May	% CHNG
				(From May 03)
Low-Density				
ATLANTIC	24.1%	25.2%	26.5%	(1.9)
CAPE MAY	43.3%	50.4%	43.1%	(24.9) Δ
CUMBERLAND	20.3%	23.6%	25.2%	(16.3)
HUNTERDON	14.3%	35.3%	11.8%	Δ 41.2 *
SALEM	51.9%	55.3%	52.3%	* (4.7)
SUSSEX	31.3%	26.5%	22.7%	(47.8) Δ
WARREN	37.2%	44.2%	36.4%	(25.6) Δ
Mid-Dens				
BURLINGTON	33.1%	34.5%	34.0%	(18.8)
GLOUCESTER	23.3%	24.2%	21.5%	Δ (13.6)
MERCER	48.5%	44.4%	44.5%	(2.5)
MONMOUTH	47.9%	51.2%	43.9%	(11.9)
MORRIS	65.2%	70.1%	61.6%	* 9.3
OCEAN	32.7%	32.8%	28.6%	5.3
SOMERSET	44.6%	51.5%	45.2%	* (2.0)
High-Dens				
BERGEN	43.7%	44.8%	44.4%	11.4 *
CAMDEN	36.9%	38.6%	37.9%	(6.4)
ESSEX	36.5%	37.5%	35.4%	9.5 *
HUDSON	35.4%	40.7%	37.8%	8.6
MIDDLESEX	24.6%	23.6%	22.3%	Δ (16.8)
PASSAIC	25.7%	27.4%	24.3%	(14.2)
UNION	30.7%	31.4%	31.8%	(19.7)
NJ TOTAL	35.1%	36.8%	34.8%	(2.2)

 Δ =lower participation counties

* =higher participation counties

FIGURE 4

TANF PARTICIPATION RATES BY COUNTY

MAY 2004

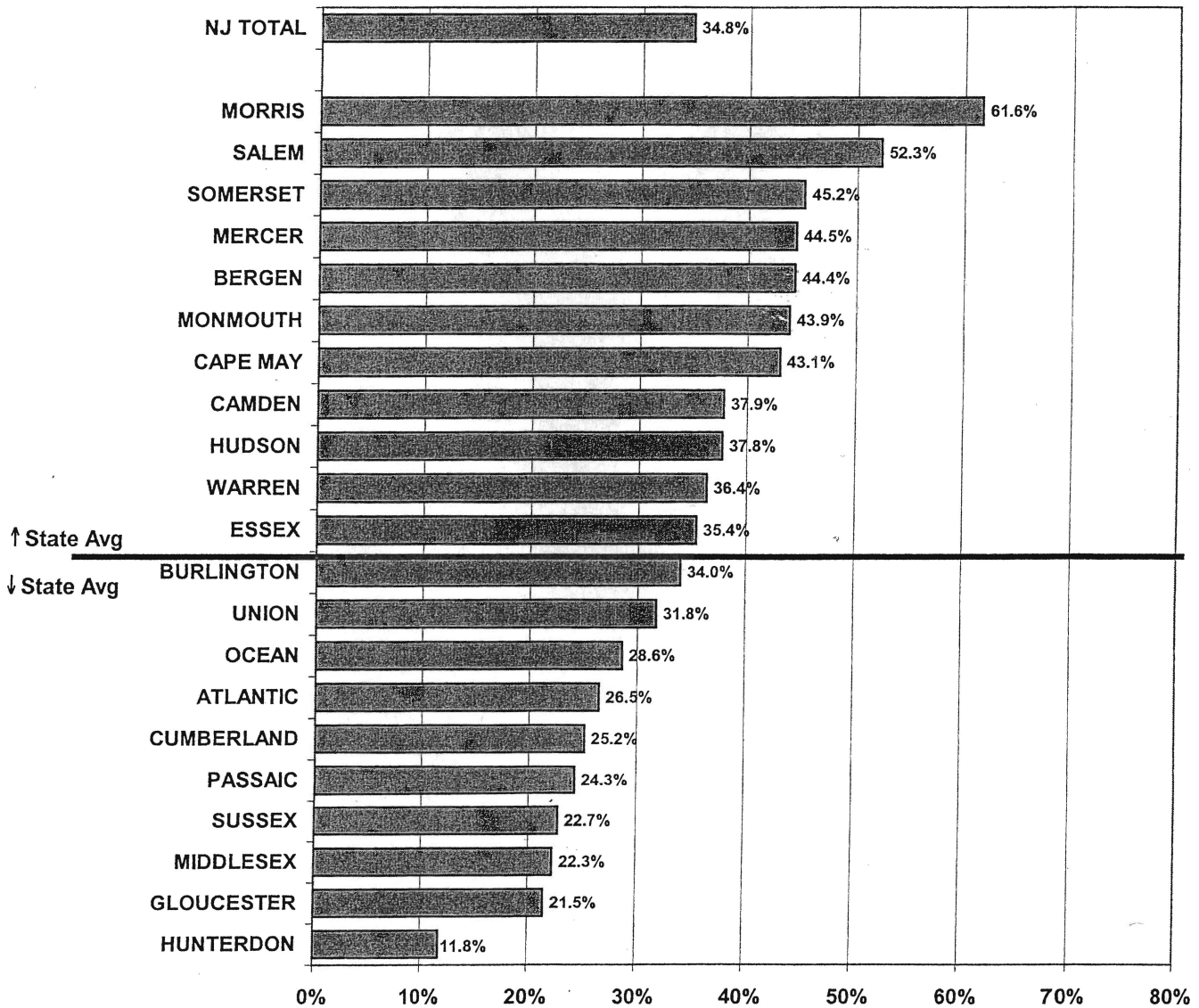


Figure 5
FOOD STAMP
PROGRAM

NUMBER OF PARTICIPATING HOUSEHOLDS, PERSONS, ADULTS
AND CHILDREN FOR MAY 2004 (STATEWIDE)

MAY 2002 THROUGH MAY 2004

	HOUSEHOLDS				PERSONS					
	WFNJ/ TANF	Other low income	TOTAL	% CHNG (1 Yr.)	TOTAL	% CHNG (1 Yr.)	WFNJ/ TANF	Other low income	Adults	Children
2002 MAY	30,714	108,426	139,140		296,627		95,727	200,900	145,815	150,812
JUN	30,154	107,564	137,718		293,857		93,996	199,861	144,132	149,725
JUL	30,361	107,961	138,322		295,127		94,561	200,566	144,609	150,518
AUG	30,502	108,327	138,829		295,977		94,794	201,183	144,878	151,099
SEP	30,353	107,774	138,127		293,409		94,073	199,336	143,850	149,559
OCT	30,819	109,875	140,694	4.9%	298,991	2.9%	95,413	203,578	146,413	152,578
NOV	30,941	110,923	141,864	4.8%	301,641	2.9%	95,829	205,812	147,684	153,957
DEC	31,056	110,874	141,930	5.0%	302,035	3.0%	96,061	205,974	147,681	154,354
2002 AVERAGE	30,860	107,843	138,703		295,795		96,167	199,628	145,152	150,643
2003 JAN	31,298	112,495	143,793	5.3%	305,407	3.8%	96,672	208,735	149,615	155,792
FEB	31,020	112,383	143,403	4.8%	303,506	3.6%	95,537	207,969	149,327	154,179
MAR	31,110	113,509	144,619	6.0%	305,808	5.1%	95,654	210,154	151,007	154,801
APR	31,373	115,028	146,401	6.1%	309,748	5.5%	96,555	213,193	153,009	156,739
MAY	31,554	117,041	148,595	6.8%	314,790	6.1%	97,225	217,565	155,428	159,362
JUN	31,846	117,109	148,955	8.2%	317,053	7.9%	98,337	218,716	156,243	160,810
JUL	32,384	118,192	150,576	8.9%	321,100	8.8%	100,093	221,007	158,270	162,830
AUG	32,363	117,434	149,797	7.9%	319,181	7.8%	99,741	219,440	157,562	161,619
SEP	32,319	117,222	149,541	8.3%	317,871	8.3%	99,272	218,599	156,919	160,952
OCT	33,168	119,869	153,037	8.8%	325,806	9.0%	101,709	224,097	160,583	165,223
NOV	32,713	119,893	152,606	7.6%	324,904	7.7%	100,178	224,726	159,869	165,035
DEC	33,080	119,741	152,821	7.7%	326,365	8.1%	101,256	225,109	159,989	166,376
2003 AVERAGE	32,019	116,660	148,679		315,962		98,519	217,443	155,652	160,310
2004 JAN	33,254	121,304	154,558	7.5%	328,920	7.7%	101,531	227,389	161,703	167,217
FEB	33,109	121,532	154,641	7.8%	327,257	7.8%	100,723	226,534	161,615	165,642
MAR	34,111	124,513	158,624	9.7%	334,728	9.5%	103,423	231,305	165,665	169,063
APR	34,618	126,556	161,174	10.1%	339,783	9.7%	104,933	234,850	168,006	171,777
MAY	34,808	126,995	161,803	8.9%	341,446	8.5%	105,755	235,691	168,464	172,982
2004 AVG (to date)	33,980	124,180	158,160		334,427		103,273	231,154	165,091	169,336

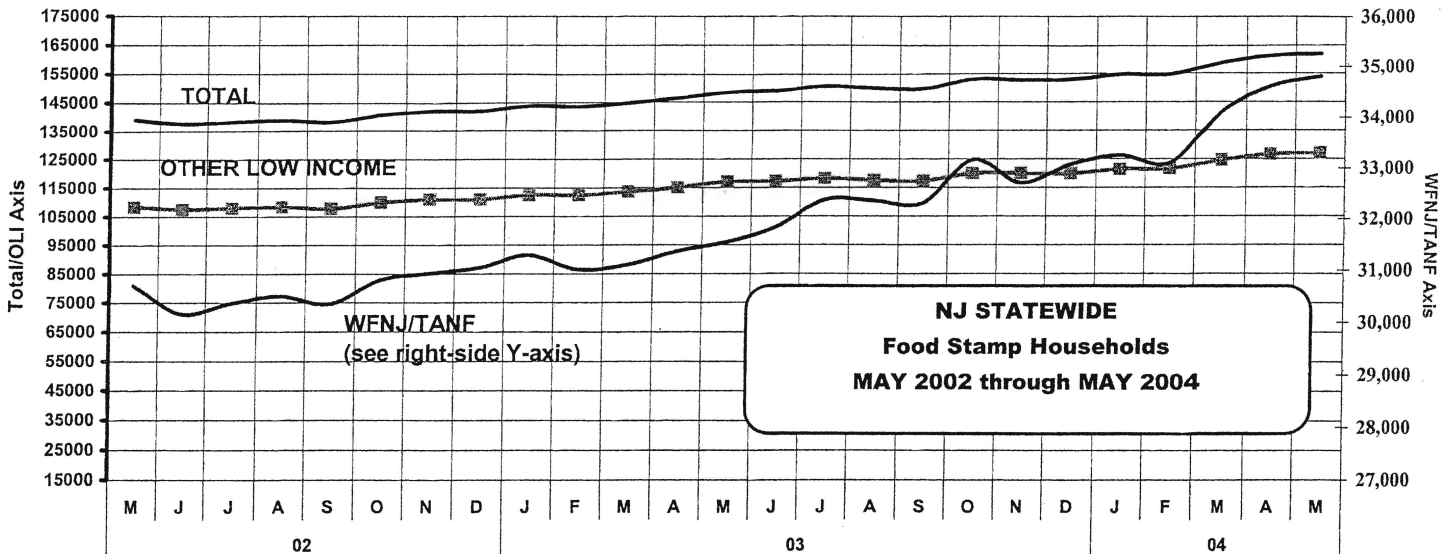




Figure 7

NUMBER OF PARTICIPATING HOUSEHOLDS, PERSONS, ADULTS AND CHILDREN BY COUNTY FOR MAY 2004

FOOD STAMP PROGRAM

PROGRAM

Δ= ↑ Caseload %

*= ↓ Caseload %

County by

Pop Density Strata

MAY 2004

HOUSEHOLDS

PERSONS

	WFNJ/ TANF	Other low income	TOTAL	% Chng (1 Yr)	TOTAL	% Chng (1 Yr)	WFNJ/ TANF	Other low income	Adults	Children
ATLANTIC	1,175	5,720	6,895	9.4	14,078	6.5	3,540	10,538	7,197	6,881
CAPE MAY	194	1,586	1,780	7.1	3,662	* 2.9	600	3,062	1,932	1,730
CUMBERLAND	1,159	4,525	5,684	7.4	13,128	3.9	3,635	9,493	5,863	7,265
HUNTERDON	23	317	340	(4.5) *	557	* (1.2)	55	502	374	183
SALEM	349	1,309	1,658	20.1 Δ	3,650	Δ 16.4	1,051	2,599	1,756	1,894
SUSSEX	97	696	793	12.6	1,675	11.1	296	1,379	900	775
WARREN	216	1,171	1,387	5.2 *	3,017	5.0	713	2,304	1,621	1,396
BURLINGTON	789	3,669	4,458	13.4	9,278	13.1	2,332	6,946	4,697	4,581
GLOUCESTER	717	2,637	3,354	17.4 Δ	6,997	14.4	2,134	4,863	3,611	3,386
MERCER	1,845	5,240	7,085	5.6	14,479	4.2	5,619	8,860	7,136	7,343
MONMOUTH	1,345	5,430	6,775	1.6 *	14,150	* 0.5	4,052	10,098	7,124	7,026
MORRIS	206	1,931	2,137	21.9 Δ	3,558	Δ 25.4	594	2,964	2,343	1,215
OCEAN	580	4,920	5,500	9.3	13,458	8.1	1,781	11,677	5,909	7,549
SOMERSET	279	1,873	2,152	13.3	3,781	Δ 15.8	809	2,972	2,215	1,566
BERGEN	788	7,135	7,923	10.7	13,408	13.4	2,232	11,176	8,943	4,465
CAMDEN	3,560	10,771	14,331	7.4	32,950	7.7	11,200	21,750	15,099	17,851
ESSEX	10,251	22,119	32,370	7.1	70,166	6.6	31,425	38,741	33,042	37,124
HUDSON	4,937	17,510	22,447	6.0	46,568	6.1	14,554	32,014	23,392	23,176
MIDDLESEX	1,444	5,913	7,357	12.8	14,677	14.7	4,136	10,541	7,641	7,036
PASSAIC	2,882	15,328	18,210	14.7	39,073	15.6	8,877	30,196	18,215	20,858
UNION	1,972	7,195	9,167	8.8	19,136	8.0	6,120	13,016	9,454	9,682
NJ TOTAL	34,808	126,995	161,803	8.9	341,446	8.5	105,755	235,691	168,464	172,982

**Total Food Stamp Recipients
MAY 2004 By County**

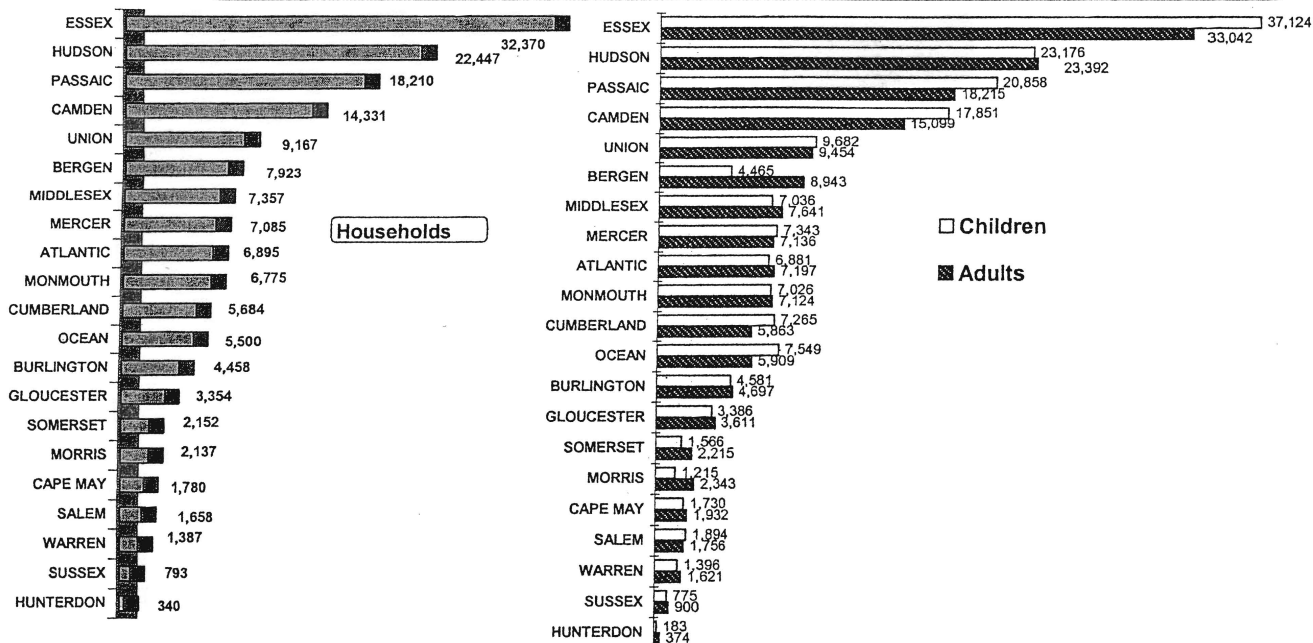


Figure 8
TANF
EMERGENCY ASSISTANCE
NUMBER OF ELIGIBLE FAMILIES RECEIVING EMERGENCY ASSISTANCE PAYMENTS
FOR MAY 2004 -STATEWIDE (UNDUPLICATED CASES)

MAY 2002 THROUGH MAY 2004										
	Total Families Receiving EA	% CHNG (1 YR)	Temp Rent Assist	% CHNG (1 YR)	Motel Housing	% CHNG (1 YR)	Emerg Shelter	% CHNG (1 YR)	Other TANF-EA	% CHNG (1 YR)
2002 MAY	2,769		342		419		417		1,591	
JUN	2,615		347		516		406		1,346	
JUL	2,779		351		459		519		1,450	
AUG	2,889		353		515		505		1,516	
SEP	3,030		348		587		466		1,629	
OCT	3,324	26.1%	380	54.5%	633	50.0%	494	4.2%	1,817	21.6%
NOV	3,008	29.3%	389	45.1%	482	35.4%	422	-11.9%	1,715	40.1%
DEC	3,169	24.6%	436	46.3%	577	27.7%	450	4.2%	1,706	25.3%
2002 AVERAGE	2,826		347		516		438		1,525	
2003 JAN	3,301	24.5%	470	66.7%	612	12.9%	496	21.0%	1,723	21.6%
FEB	2,702	19.3%	485	55.9%	461	26.0%	445	31.7%	1,311	4.9%
MAR	3,223	24.2%	570	92.6%	615	13.1%	449	11.7%	1,589	17.4%
APR	3,475	23.6%	631	91.2%	503	-8.2%	460	8.0%	1,881	24.7%
MAY	3,624	30.9%	649	89.8%	579	38.2%	460	10.3%	1,936	21.7%
JUN	3,630	38.8%	705	103%	557	7.9%	451	11.1%	1,917	42.4%
JUL	3,891	40.0%	793	126%	496	8.1%	442	-14.8%	2,160	49.0%
AUG	4,043	39.9%	905	156%	485	-5.8%	454	-10.1%	2,199	45.1%
SEP	4,376	44.4%	1,053	203%	467	-20.4%	485	4.1%	2,371	45.5%
OCT	5,100	53.4%	1,244	227%	577	-8.8%	546	10.5%	2,733	50.4%
NOV	4,322	43.7%	1,388	257%	445	-7.7%	469	11.1%	2,020	17.8%
DEC	5,248	65.6%	1,730	297%	563	-2.4%	518	15.1%	2,437	42.8%
2003 AVERAGE	3,911		885		530		473		2,023	
2004 JAN	4,886	48.0%	1,854	294%	543	-11.3%	436	-12.1%	2,053	19.2%
FEB	4,877	80.5%	2,006	314%	446	-3.3%	446	0.2%	1,979	51.0%
MAR	5,976	85.4%	2,271	298%	521	-15.3%	462	2.9%	2,542	60.0%
APR	5,770	66.0%	2,427	285%	436	-13.3%	437	-5.0%	2,470	31.3%
MAY	5,707	57.5%	2,601	301%	384	-33.7%	451	-2.0%	2,271	17.3%
2003 AVG (to date)	5,443		2,232		466		446		2,263	

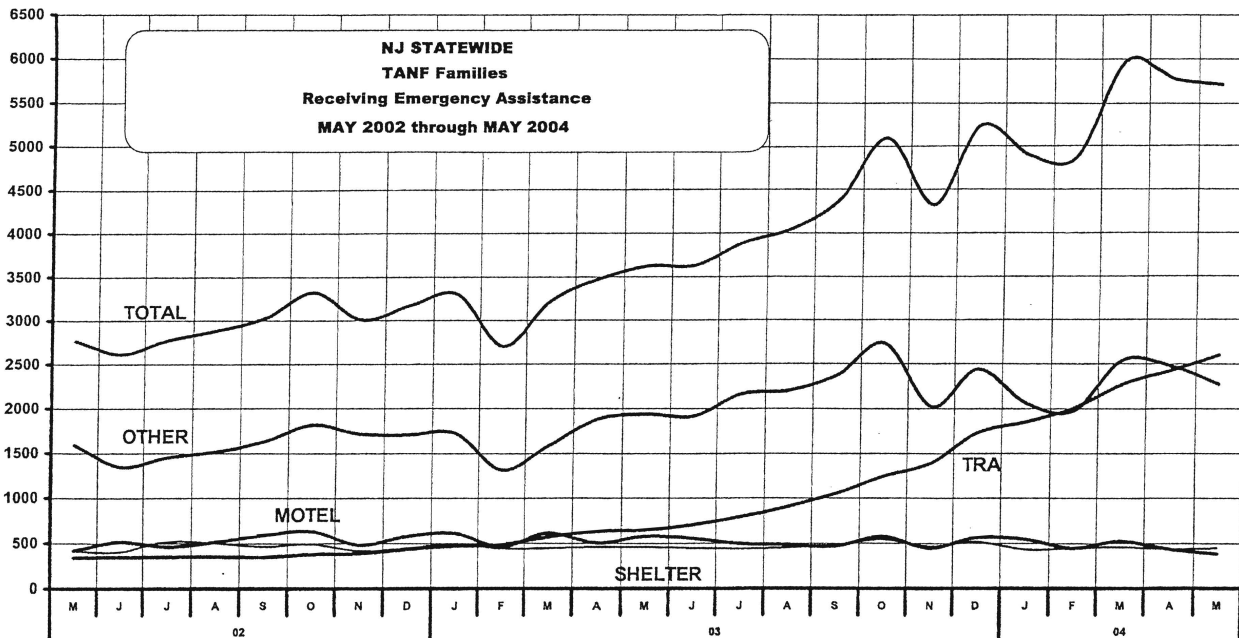


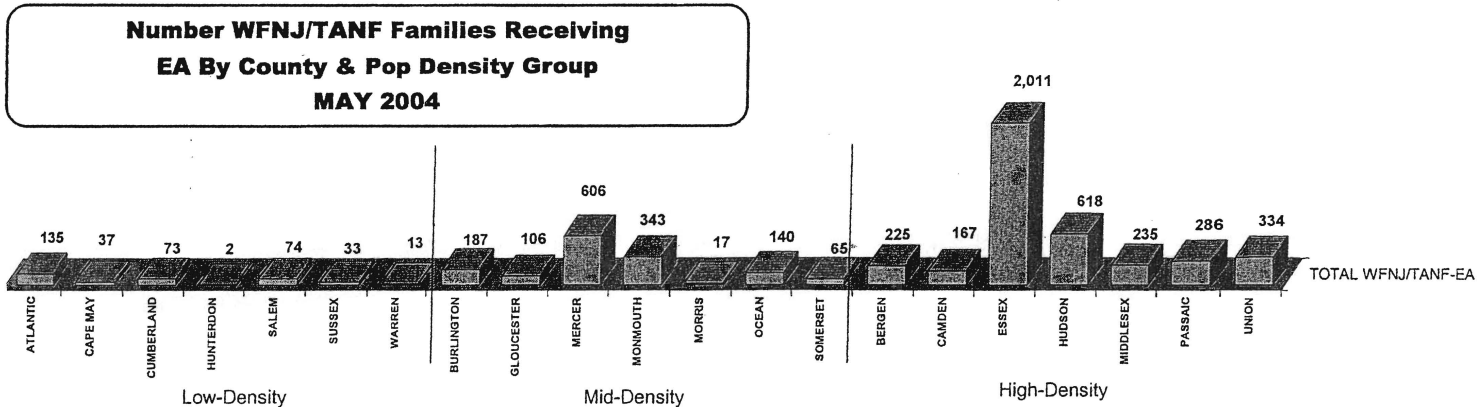
Figure 9 NUMBER OF ELIGIBLE FAMILIES RECEIVING EMERGENCY ASSISTANCE PAYMENTS
TANF/SSI BY COUNTY & POPULATION DENSITY STRATUM (UNDUPLICATED CASES)

EMERGENCY ASSISTANCE

County	MAY 2004										SSI Recipients Receiving EA*
	TOTAL WFNJ/TANF-EA	% CHNG (From May 03)	Temp Rent Assist.		Motel Housing		Emergency Shelter		Other WFNJ/TANF-EA		
			% Total	% Total	% Total	% Total	% Total	% Total			
ATLANTIC	135	18.4%	28	20.7%	0	0.0%	29	21.5%	78	57.8%	63
CAPE MAY	37	32.1%	14	37.8%	11	29.7%	0	0.0%	12	32.4%	16
CUMBERLAND	73	17.7%	19	26.0%	9	12.3%	5	6.8%	40	54.8%	14
HUNTERDON	2	100%	0	0.0%	0	0.0%	0	0.0%	2	100%	5
SALEM	74	76.2%	17	23.0%	9	12.2%	1	1.4%	47	63.5%	21
SUSSEX	33	65.0%	21	63.6%	2	6.1%	1	3.0%	9	27.3%	20
WARREN	13	160% Δ	5	38.5%	2	15.4%	0	0.0%	6	46.2%	1
BURLINGTON	187	113% Δ	28	15.0%	64	34.2%	1	0.5%	94	50.3%	78
GLOUCESTER	106	73.8%	45	42.5%	4	3.8%	22	20.8%	35	33.0%	27
MERCER	606	23.4%	337	55.6%	23	3.8%	39	6.4%	207	34.2%	125
MONMOUTH	343	-2.3% *	98	28.6%	140	40.8%	0	0.0%	105	30.6%	14
MORRIS	17	41.7%	7	41.2%	2	11.8%	3	17.6%	5	29.4%	10
OCEAN	140	11.1%	46	32.9%	33	23.6%	0	0.0%	61	43.6%	58
SOMERSET	65	47.7%	8	12.3%	4	6.2%	17	26.2%	36	55.4%	21
BERGEN	225	90.7%	104	46.2%	3	1.3%	19	8.4%	99	44.0%	122
CAMDEN	167	38.0%	66	39.5%	25	15.0%	11	6.6%	65	38.9%	31
ESSEX	2,011	110%	1186	59.0%	3	0.1%	212	10.5%	610	30.3%	181
HUDSON	618	85.0%	340	55.0%	11	1.8%	4	0.6%	263	42.6%	3
MIDDLESEX	235	9.8% *	41	17.4%	15	6.4%	25	10.6%	154	65.5%	51
PASSAIC	286	-2.1% *	7	2.4%	12	4.2%	32	11.2%	235	82.2%	86
UNION	334	134% Δ	184	55.1%	12	3.6%	30	9.0%	108	32.3%	17
NJ TOTAL	5,707	57.5%	2601	45.6%	384	6.7%	451	7.9%	2,271	39.8%	964

*SSI-EA now includes pay code 24 Δ = ↑ Caseload %

* = ↓ Caseload %



Derived from NJ Division of Family Development FAMIS Reports #FM456, #FM457 and #FM430-03A

Figure 10
GENERAL ASSISTANCE PROGRAM
NUMBER OF EMPLOYABLE AND UNEMPLOYABLE RECIPIENTS AND EMERGENCY ASSISTANCE PAYMENTS FOR MAY 2004 -STATEWIDE
MAY 2002 THROUGH MAY 2004

	All Persons Aided						Emergency Assistance Payments			
	Employable	% Chng (1 Yr)	Unemployable	% Chng (1 Yr)	Total	% Chng (1 Yr)	Temporary Rental Assistance	Other GA-EA	Total	% Chng (1 Yr)
2002										
MAY	14,115		11,909		26,024		1,548	1,987	3,535	
JUN	13,858		11,766		25,624		1,495	1,995	3,490	
JUL	13,483		11,820		25,303		1,499	2,208	3,707	
AUG	13,533		11,898		25,431		1,517	2,415	3,932	
SEP	13,352		12,016		25,368		1,536	1,912	3,448	
OCT	13,952	14.2%	12,332	12.3%	26,284	13.3%	1,545	2,575	4,120	18.5%
NOV	13,880	17.4%	12,331	9.7%	26,211	13.7%	1,595	1,935	3,530	12.9%
DEC	14,963	19.1%	12,510	10.7%	27,473	15.1%	1,645	2,363	4,008	19.5%
2002 AVERAGE	13,883		11,916		25,799		1,530	2,132	3,662	
2003										
JAN	15,818	19.9%	12,614	12.0%	28,432	16.2%	1,712	2,293	4,005	31.8%
FEB	16,274	20.4%	12,436	6.0%	28,710	13.7%	1,724	2,203	3,927	20.1%
MAR	17,241	20.4%	12,772	11.7%	30,013	16.5%	1,843	2,448	4,291	9.7%
APR	17,337	20.2%	12,893	7.6%	30,230	14.5%	1,892	2,752	4,644	17.4%
MAY	17,356	23.0%	12,918	8.5%	30,274	16.3%	1,895	2,754	4,649	31.5%
JUN	17,635	27.3%	13,154	11.8%	30,789	20.2%	2,100	2,710	4,810	37.8%
JUL	17,637	30.8%	13,387	13.3%	31,024	22.6%	2,118	2,973	5,091	37.3%
AUG	17,531	29.5%	13,453	13.1%	30,984	21.8%	2,285	2,819	5,104	29.8%
SEP	17,434	30.6%	13,603	13.2%	31,037	22.3%	2,317	3,002	5,319	54.3%
OCT	17,357	24.4%	13,814	12.0%	31,171	18.6%	2,390	2,732	5,122	24.3%
NOV	16,989	22.4%	13,690	11.0%	30,679	17.0%	2,442	2,139	4,581	29.8%
DEC	17,293	15.6%	13,776	10.1%	31,069	13.1%	2,570	2,759	5,329	33.0%
2003 AVERAGE	17,159		13,209		30,368		2,107	2,632	4,739	
2004										
JAN	18,067	14.2%	13,770	9.2%	31,837	12.0%	2,447	2,729	5,176	29.2%
FEB	19,030	16.9%	13,823	11.2%	32,853	14.4%	2,813	3,356	6,169	57.1%
MAR	19,898	15.4%	14,371	12.5%	34,269	14.2%	2,992	3,589	6,581	53.4%
APR	20,091	15.9%	14,699	14.0%	34,790	15.1%	3,129	3,464	6,593	42.0%
MAY	19,801	14.1%	14,731	14.0%	34,532	14.1%	3,274	3,404	6,678	43.6%
2004 AVG (to date)	19,377		14,279		33,656		2,931	3,308	6,239	

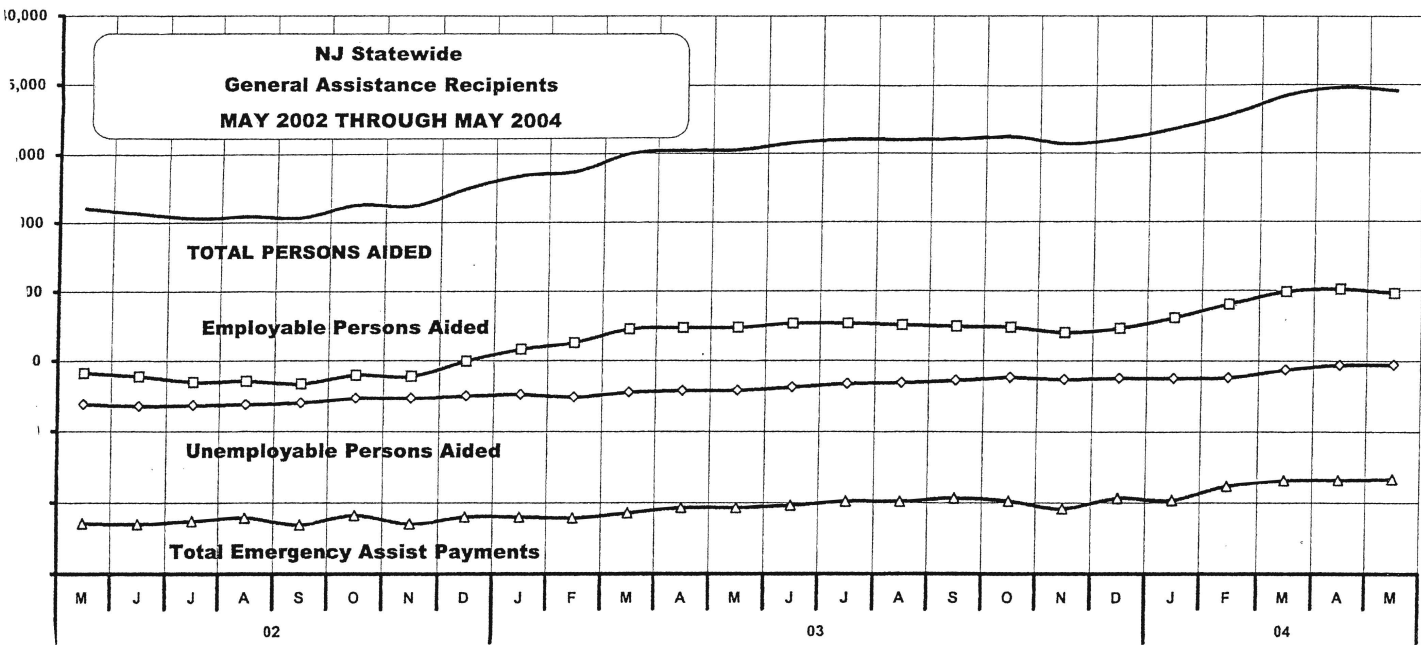


FIGURE 11

GENERAL EMPLOYABLE AND UNEMPLOYABLE RECIPIENTS ASSISTANCE AND EMERGENCY ASSISTANCE RECIPIENTS BY COUNTY & POPULATION DENSITY STRATUM PROGRAM MAY 2004

County	Total Persons Aided						Emergency Assistance Payments			
	Employable	% Chng (From May 03)	Unemployable	% Chng (From May 03)	Total	% Chng (From May 03)	Temporary Rental Assist.	Other GA-EA	Total	% Chng (From May 03)
ATLANTIC	949	14.9%	815	29.2%	1,764	21.1%	144	100	244	95.2% Δ
CAPE MAY	244	19.6%	172	6.2%	416	13.7%	79	51	130	58.5%
CUMBERLAND	830	4.0%	687	21.8%	1,517	11.4%	27	108	135	133% Δ
HUNTERDON	58	3.6%	69	-10.4% *	127	-4.5% *	16	29	45	-4.3% *
SALEM	301	44.0% Δ	220	12.2%	521	28.6% Δ	12	66	78	16.4%
SUSSEX	82	17.1%	101	11.0%	183	13.7%	40	40	80	19.4%
WARREN	157	6.1%	124	33.3% Δ	281	16.6%	64	21	85	37.1%
BURLINGTON	494	52.0% Δ	504	17.8%	998	32.5% Δ	67	196	263	131% Δ
GLOUCESTER	359	5.3%	368	20.3%	727	12.4%	22	80	102	85.5%
MERCER	1,393	-7.7% *	1,080	6.2%	2,473	-2.1% *	313	287	600	38.9%
MONMOUTH	533	5.3%	611	5.7%	1,144	5.5% *	192	265	457	40.6%
MORRIS	196	12.0%	264	45.1% Δ	460	28.9% Δ	38	53	91	89.6%
OCEAN	378	3.6% *	525	20.1%	903	12.6%	56	89	145	70.6%
SOMERSET	158	1.9% *	186	33.8% Δ	344	17.0%	59	56	115	10.6% *
BERGEN	585	28.6%	622	4.0%	1,207	14.6%	190	99	289	14.7%
CAMDEN	1,717	10.3%	1,700	16.0%	3,417	13.0%	244	282	526	45.3%
ESSEX	4,803	8.9%	2,117	23.1%	6,920	12.9%	749	953	1,702	48.9%
HUDSON	2,481	22.9%	1,769	15.6%	4,250	19.8%	485	215	700	39.2%
MIDDLESEX	497	34.3% Δ	634	5.1%	1,131	16.2%	99	161	260	32.7%
PASSAIC	2,089	20.5%	1,262	2.8% *	3,351	13.2%	235	129	364	12.0% *
UNION	1,497	33.1%	901	3.3% *	2,398	20.1%	143	124	267	35.5%
TOTAL	19,801	14.1%	14,731	14.0%	34,532	14.1%	3,274	3,404	6,678	43.6%

↑ Caseload %

* = ↓ Caseload %

Source: NJ Division of Family Development, GA Fiscal Unit

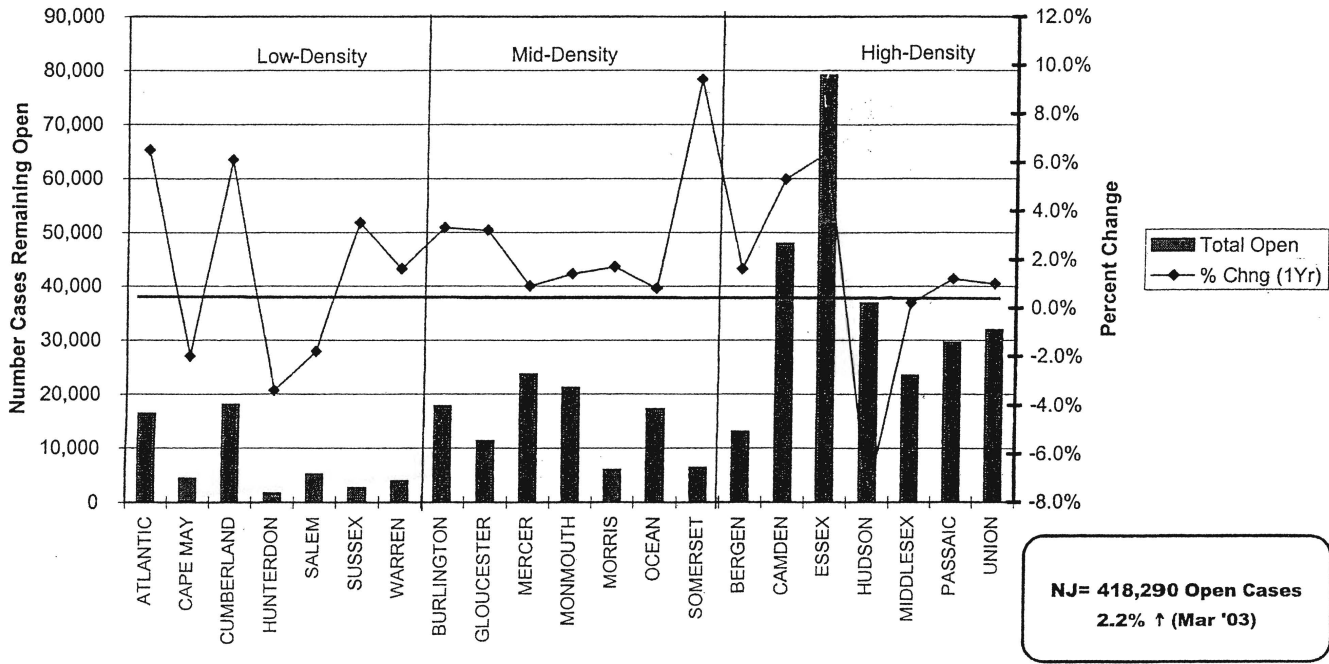
FIGURE 12**CHILD SUPPORT
AND PATERNITY****CHILD SUPPORT AND PATERNITY COLLECTIONS****State Summary**Comparison of FFY 2003 and FFY 2004

COLLECTION SOURCE	10/02-3/03	10/03-3/04	Dollar Change	% Change
Federal Tax	\$11,910,230	\$14,803,217	\$2,892,987	24.3%
State Tax	2,563,430	1,765,486	(797,944)	-31.1%
Unempl. Ins. Ben.	20,665,601	21,155,206	489,605	2.4%
Income Withholding	288,549,971	311,413,685	22,863,714	7.9%
From Other States	21,475,632	21,766,866	291,234	1.4%
Other/Own Behalf	91,718,849	95,321,018	3,602,169	3.9%
Admin Enforce				
TOTAL COLLECTION	\$436,883,713	\$466,225,478		6.7%
TOTAL DISTRIBUTION*	\$415,276,070	\$439,966,912		5.9%
Percent of Collections Distributed	95.1%	94.4%		

* Includes money sent to other states

Distributed amount represents collections reported and recognized by the Federal Office of
Child Support Enforcement for calculating incentives and annual report to Congress
Source: DFD Office of Child Support and Paternity Programs

Figure 13: Child Support & Paternity Cases Open By County and Pop Density Stratum (Quarter Ending March 2004)



Data Sources: Automated Child Support Enforcement System #CS199-3

FIGURE 14
CHILD SUPPORT
AND PATERNITY

NUMBER OF CASES REMAINING OPEN

QUARTER ENDING MARCH 2004

	CASES WITH ORDERS			OTHER CASES (1)		TOTAL TANF AND FOSTER CARE	TOTAL NON- TANF	TOTAL ALL CASES	% CHNG (Since Mar 03)
	TANF AND FOSTER CARE	TANF AND FOSTER CARE ARREARS (2)	NON- TANF	TANF AND FOSTER CARE	NON- TANF				
ATLANTIC	1,214	3,195	8,977	1,417	1,641	5,826	10,618	16,444	6.5%
CAPE MAY	244	986	2,935	133	132	1,363	3,067	4,430	-2.0%
CUMBERLAND	1,645	5,641	9,747	484	582	7,770	10,329	18,099	6.1%
HUNTERDON	65	196	1,305	44	58	305	1,363	1,668	-3.4%
SALEM	568	1,538	2,749	223	123	2,329	2,872	5,201	-1.8%
SUSSEX	156	348	1,975	74	149	578	2,124	2,702	3.5%
WARREN	282	864	2,543	118	118	1,264	2,661	3,925	1.6%
BURLINGTON	1,062	3,059	11,249	945	1,477	5,066	12,726	17,792	3.3%
GLOUCESTER	810	2,380	7,028	418	700	3,608	7,728	11,336	3.2%
MERCER	2,294	5,775	11,771	2,129	1,780	10,198	13,551	23,749	0.9%
MONMOUTH	1,746	4,807	11,914	1,128	1,588	7,681	13,502	21,183	1.4%
MORRIS	245	585	4,751	176	319	1,006	5,070	6,076	1.7%
OCEAN	954	3,534	11,004	666	1,089	5,154	12,093	17,247	0.8%
SOMERSET	350	871	4,525	282	392	1,503	4,917	6,420	9.4%
BERGEN	481	1,499	9,439	652	990	2,632	10,429	13,061	1.6%
CAMDEN	4,445	13,251	22,257	3,673	4,321	21,369	26,578	47,947	5.3%
ESSEX	7,033	15,189	32,608	13,492	10,805	35,714	43,413	79,127	6.4%
HUDSON	3,016	7,599	19,541	3,306	3,448	13,921	22,989	36,910	-7.7%
MIDDLESEX	1,395	4,157	14,201	1,451	2,285	7,003	16,486	23,489	0.2%
PASSAIC	2,786	5,568	15,548	2,845	2,827	11,199	18,375	29,574	1.2%
UNION	2,069	6,310	17,876	2,622	3,033	11,001	20,909	31,910	1.0%
NJ TOTAL	32,860	87,352	223,943	36,278	37,857	156,490	261,800	418,290	2.2%

Data Sources: Automated Child Support Enforcement System #CS199-3

(1) - Needing location, paternity, or other services to establish an obligation

(2) - Cases with arrears *only*

Figure 15

WORK FIRST NEW JERSEY STATISTICAL SUMMARY

WFNJ

MAY 2004

COUNTY	CASES REQUIRED TO PARTICIPATE	EMPLOYMENT DIRECTED ACTIVITIES			EMPLOYED OPEN (WFNJ RECIPIENT)	SUPPORT SERVICES ON ACTIVE CASE		EMPLOYED CLOSED	POST ASSISTANCE CHILD CARE
		CWEP	ALL OTHER TRAINING	JOB SEARCH		CHILD CARE	TRAINING REL. EXPENSES		
ATLANTIC	804	1	169	5	133	100	153	57	273
BERGEN	554	47	304	205	94	152	169	16	138
BURLINGTON	574	60	99	168	101	101	229	26	225
CAMDEN	2,584	639	455	204	580	601	831	116	626
CAPE MAY	123	3	19	77	64	16	34	14	64
CUMBERLAND	783	3	320	222	75	76	142	54	225
ESSEX	7,788	262	4,130	905	1,689	1,948	2,694	150	892
GLOUCESTER	512	31	53	34	66	75	6	26	124
HUDSON	3,338	91	2,245	587	576	952	1,452	94	733
HUNTERDON	17	0	0	6	3	1	0	3	14
MERCER	1,422	33	1,048	230	235	299	337	64	346
MIDDLESEX	984	0	223	146	200	120	196	38	228
MONMOUTH	965	1	601	158	232	292	402	50	306
MORRIS	159	96	52	21	36	52	44	9	59
OCEAN	395	36	66	47	77	107	127	22	194
PASSAIC	2,061	70	1,148	160	248	298	510	49	292
SALEM	262	22	86	21	42	58	92	23	88
SOMERSET	210	0	78	95	67	49	67	14	92
SUSSEX	88	16	6	12	15	15	18	2	37
UNION	1,391	227	598	148	165	253	309	46	226
WARREN	143	0	83	8	31	11	15	6	31
STATE	25,157	1,638	11,783	3,459	4,729	5,576	7,827	879	5,213

Data is derived from NJ Division of Family Development's FAMIS reports

ACRONYMS

ACES: Automated Child Support Enforcement System

CASS: Consolidated Assistance and Support System

EMERGENCY ASSISTANCE (EA) - Payments to those eligible for WFNJ/TANF or WFNJ/GA, authorized during the 30 consecutive days immediately following the emergency (defined as a substantial loss of shelter, food, clothing, or household furnishings by fire, flood or other similar disaster) or if the eligible individual or family is in an imminent or actual state of homelessness.

FOOD STAMP PROGRAM (FS) - Authorized by Congress as a nutritional supplement program to provide low income households with more food of greater variety and better nutrition. Program eligibility is based on household income, resources, and expenses for medical, shelter, and dependent care. CWA staff refers certain recipients to the New Jersey Department of Labor for participation in the Food Stamp Employment and Training Program.

FAMIS: Family Assistance Management Information System

GAAS: General Assistance Automated System

OMEGA: Online Management of Economic Goal Achievement

SSI-EA: Supplemental Security Income-Emergency Assistance

WFNJ: Work First New Jersey - Fully implemented July 1, 1997, this is New Jersey's welfare reform program which responds to the requirements of the Federal Personal Responsibility and Work Opportunity Reconciliation Act (**PRWORA**) of 1996. PRWORA establishes Temporary Assistance to Needy Families (**TANF**) as the replacement for AFDC cash assistance. WFNJ includes two segments, **WFNJ/TANF** for families with children, and **WFNJ/GA** (General Assistance) for single adults and couples without dependent children. The emphasis is on achieving self-sufficiency and limits lifetime receipt of financial assistance to a total of five years.

EXPLANATORY NOTES

The Department of Human Services Division of Family Development provides basic income and an opportunity to achieve self-sufficiency for individuals and families served by the Division's programs. The Division provides leadership, direction and supervision to those public agencies responsible for administering those programs and plans for and develops policies to promote self-sufficiency.

County Population-Density Stratum:

Independent Evaluation Consortium. Interim Report. Independent Evaluation of the California Tobacco Control Prevention and Education Program: Wave 2 Data, 1998; Wave 1 and Wave 2 Data Comparisons, 1996-1998. Rockville: Maryland: The Gallup Organization, 1998.

Subsets of process evaluation data for the above report were calculated using data from four evaluation strata prepared by county density including: Media Market, High-density, Medium-density, and Low-density county types.

In this summary report, New Jersey county strata were prepared by equally dividing the state into three groups: Low, Medium (Mid), and High-density. County population density was determined by dividing county population (2000 census) by its area in square miles. High-density counties include Bergen, Camden, Essex, Hudson, Middlesex, Passaic, and Union Counties. Medium-density counties consisted of Burlington, Gloucester, Mercer, Monmouth, Morris, Ocean, and Somerset Counties. Atlantic, Cape May, Cumberland, Hunterdon, Salem, Sussex, and Warren Counties represented low-density counties. Population density in the High-density stratum ranged from 2289 people per square mile in Camden to 12,957 in Hudson County. Mid-density counties had a population density ranging from 526 (Burlington County) to 1552 in Mercer County. The less dense counties ranged from 190 (Salem County) to 450 people per square mile in Atlantic County.

WFNJ Statistical Summary (Figure 15)

Recipients Required to Participate - Calculation of the number of mandatory individuals

Employment Directed Activities (EDA) - From Activities Summary Report (OMEGA report # RM064). Unduplicated count of persons participating in Community Work Experience Program (CWEP), All Other Training, or Job Search.

Number of Persons Employed This Month, Still Receiving TANF – Individuals with open “empl” activity on OMEGA. Ad hoc report.

Participants Receiving Child Care Services - From Issuance Disbursement Summary (OMEGA report # RM703). Total number of active participants who show receipt of **Child Care**.

Number of Persons Closed on FAMIS Due to Employment- From FAMIS report # FM463.

Post TANF and Receiving Child Care - Persons no longer in receipt of TANF but still receiving child care. From Issuance Disbursement Summary (OMEGA report # RM703).