

**OVERVIEW**

OCEAN  
SOUTHERN REGIONAL

GRADE SPAN 09-12

This school's college and career readiness **lags in comparison** to schools across the state. Additionally, its college and career readiness **lags in comparison** to its peers. This school's graduation and post-secondary performance **lags in comparison** to schools across the state. Additionally, its graduation and post-secondary readiness **lags in comparison** to its peers.

Performance Areas	Peer Rank (Percentile)	Statewide Rank (Percentile)	Percent of Targets Met
Academic Achievement	N/A	N/A	N/A
College & Career Readiness	23	36	20%
Graduation and Post-Secondary	23	31	50%

**Improvement Status**

N/A

**Rationale**

N/A

**Very High Performance** is defined as being equal to or above the 80.0th percentile.

**High Performance** is defined as being between the 60.0th and 79.9th percentiles.

**Average Performance** is defined as being between the 40.0th and 59.9th percentiles.

**Lagging Performance** is defined as being between the 20.0th and 39.9th percentiles.

**Significantly Lagging Performance** is defined as being equal to or below the 19.9th percentile.

**Peer Schools** are schools that have similar grade levels and students with similar demographic characteristics, such as the percentage of students qualifying for Free/Reduced Lunch, Limited English Proficiency programs or Special Education programs.

**Academic Achievement**



Academic Achievement measures the content knowledge students have in language arts literacy and math. For high schools, this includes measures of the school's proficiency rate on both the Language Arts Literacy and Math sections of the New Jersey High School Proficiency Assessment (HSPA). A proficiency rate is calculated by summing the count of students who scored either proficient or advanced proficient on the assessment and dividing by the count of valid test scores.

**College and Career Readiness**

This school outperforms **36%** of schools statewide as noted by its statewide percentile ranking and **23%** of schools educating students with similar demographic characteristics as noted in its peer school percentile ranking in the performance area of College and Career Readiness. Additionally, this school is meeting **20%** of its performance targets in the area of College and Career Readiness.



College and Career Readiness measures the degree to which students are demonstrating behaviors that are indicative of future attendance and/or success in college and careers. For high schools, this includes measures of participation in college readiness tests such as the SAT or PSAT and in rigorous coursework as defined by participation in AP courses in English, math, social studies and science.

**Graduation and Post-Secondary**

This school outperforms **31%** of schools statewide as noted by its statewide percentile ranking and **23%** of schools educating students with similar demographic characteristics as noted in its peer school percentile ranking in the performance area of Graduation and Post-Secondary. Additionally, this school is meeting **50%** of its performance targets in the area of Graduation and Post-Secondary.



Graduation and Post-Secondary measures the rate at which students who begin high school four years earlier graduate within four years. Also included is a measure of the rate at which students in a particular school drop out of school.



**DEMOGRAPHIC INFORMATION**

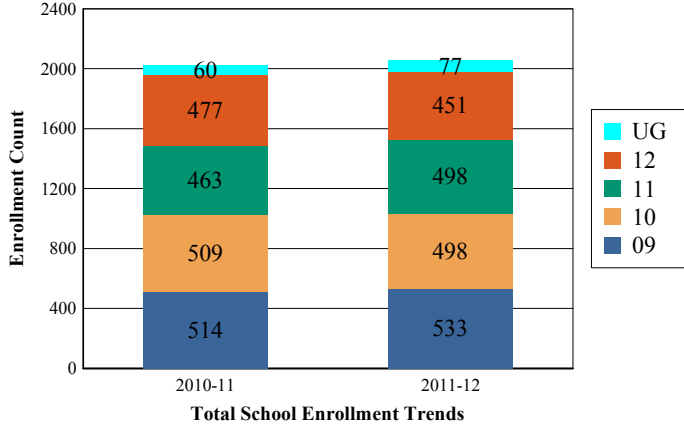
OCEAN  
SOUTHERN REGIONAL

GRADE SPAN 09-12

SOUTHERN REG HIGH  
90 CEDAR BRIDGE ROAD  
MANAHAWKIN, NJ 08050-3022

**Enrollment by Grade**

This graph presents the count of students who were 'on roll' by grade in October of each school year.

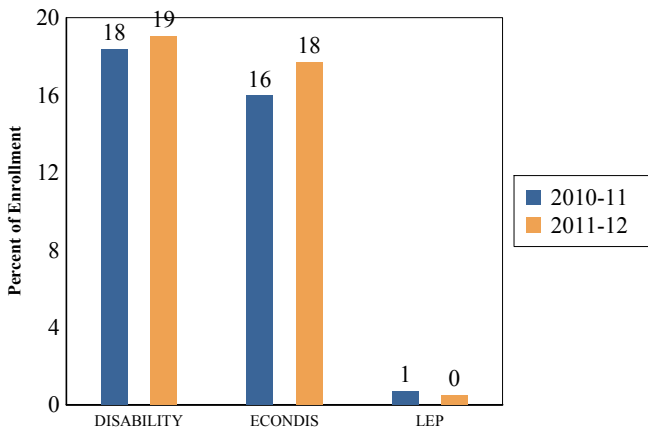


Note: "UG" represents the count of students who are 'on roll' in this school but who are educated in ungraded classrooms, meaning that the classrooms may contain students from multiple grade levels.

**Total School Enrollment**

Year	Count
2010-11	2,023
2011-12	2,057

**Enrollment Trends by Program Participation**



**Current Year Enrollment by Program Participation**

Program	Count of Students	% of Enrollment
Students with Disability	392	19%
Economically Disadvantaged Students	364	17.7%
Limited English Proficient Students	10	0.5%

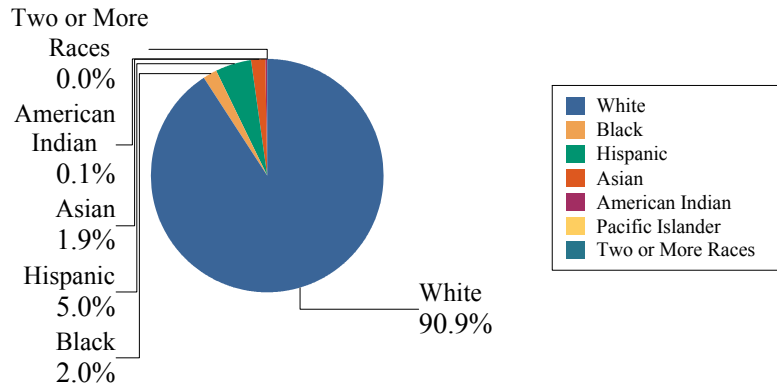
**Language Diversity**

This table presents the percentage of students who primarily speak each language in their home.

Language	Percent
English	98.3%
Spanish	0.8%
Portuguese	0.1%
Tagalog	0.1%
Afrikaans	0.1%
Quechua	0.1%
Other	0.5%

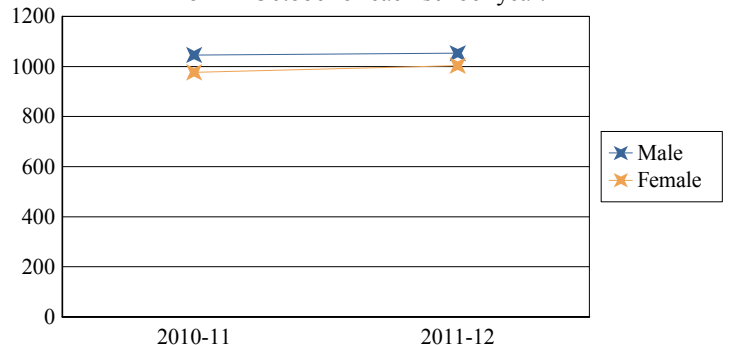
**Enrollment by Ethnic/Racial Subgroup**

This graph presents the percentages of enrollment for each subgroup defined by the No Child Left Behind Act of 2001



**Enrollment by Gender**

This graph presents the count of students by gender who were 'on roll' in October of each school year.



Year	Male	Female
2010-11	1,046	977
2011-12	1,053	1,004



State of New Jersey

29-4950-050

**ACADEMIC ACHIEVEMENT**

OCEAN

SOUTHERN REGIONAL

GRADE SPAN 09-12

SOUTHERN REG HIGH  
90 CEDAR BRIDGE ROAD  
MANAHAWKIN, NJ 08050-3022

Academic Achievement measures the content knowledge students have in Language Arts Literacy and Math. In high schools, this includes the outcomes of the New Jersey High School Proficiency Assessment (HSPA). The first column - Schoolwide Performance - in the table below includes measures of the total schoolwide proficiency rate in both Language Arts Literacy and Math across multiple administrations of the assessment. The second column - Peer School Percentile Rank - indicates where the school's proficiency rate compares to its group of peer schools. For example, a school that has a peer school percentile rank of 65 has a proficiency rate that is higher than 65% of its peer schools. The third column - Statewide Percentile Rank - indicates where the school's proficiency rate compares to schools across the state. For example, a school that has a statewide percentile rank of 30 has a proficiency rate that is higher than 30% of all schools with HSPA scores statewide. The last column - Percent of Targets Met - presents the percentage of progress targets met as defined by the NJDOE's NCLB waiver.

The Summary row presents the averages of the peer school percentile ranks, the average of statewide percentile ranks and the percentage of statewide targets met.

Academic Achievement Indicators	Schoolwide Performance	Peer Rank (Percentile)	State Rank (Percentile)	Percent of Targets Met
HSPA Language Arts Proficiency and above	N/A	N/A	N/A	N/A
HSPA Math Proficiency and above	N/A	N/A	N/A	N/A
<b>SUMMARY - Academic Achievement</b>		<b>0</b>	<b>0</b>	<b>N/A</b>

**NCLB Progress Targets - Language Arts Literacy**

This table presents the Progress Targets as uniquely calculated for each subgroup in each school under NJDOE's NCLB waiver. The methodology - as defined by the United States Department of Education - is calculated so that each subgroup will halve the gap between their 2011 proficiency rate and 100% proficiency by 2017.

Subgroups	Total Valid Scores	Pass Rate	Target	Met Target?
Schoolwide	-	-		--
White	-	-		--
Black	-	-		--
Hispanic	-	-		--
American Indian	-	-		--
Asian	-	-		--
Two or More Races	-	-		--
Limited English Proficient Students	-	-		--
Economically Disadvantaged Students	-	-		--
Students with Disability	-	-		--

**YES\* = Met Progress Target (Confidence Interval Applied)**

Data is presented for subgroups when the count is high enough under NCLB suppression rules.

**Proficiency Trends - Language Arts Literacy**

This graph presents the percentage of students who scored in the Advanced Proficient, Proficient and Partially Proficient categories of the statewide Language Arts Literacy assessment over the prior four years.

**Data is suppressed to protect the confidentiality of the students.**



**ACADEMIC ACHIEVEMENT**

OCEAN  
SOUTHERN REGIONAL

GRADE SPAN 09-12

SOUTHERN REG HIGH  
90 CEDAR BRIDGE ROAD  
MANAHAWKIN, NJ 08050-3022

**NCLB Progress Targets - Math**

This table presents the Progress Targets as uniquely calculated for each subgroup in each school under NJDOE's NCLB waiver. The methodology - as defined by the United States Department of Education - is calculated so that each subgroup will halve the gap between their 2011 proficiency rate and 100% proficiency by 2017.

Subgroups	Total Valid Scores	Pass Rate	Target	Met Target?
Schoolwide	-	-		--
White	-	-		--
Black	-	-		--
Hispanic	-	-		--
American Indian	-	-		--
Asian	-	-		--
Two or More Races	-	-		--
Limited English Proficient Students	-	-		--
Economically Disadvantaged Students	-	-		--
Students with Disability	-	-		--

YES\* = Met Progress Target(Confidence Interval Applied)

Data is presented for subgroups when the count is high enough under NCLB suppression rules.

**Proficiency Trends - Math**

This graph presents the percentage of students who scored in the Advanced Proficient, Proficient and Partially Proficient categories of the statewide Math assessment over the prior four years.

Data is suppressed to protect the confidentiality of the students.

**Proficiency Outcomes - Biology**

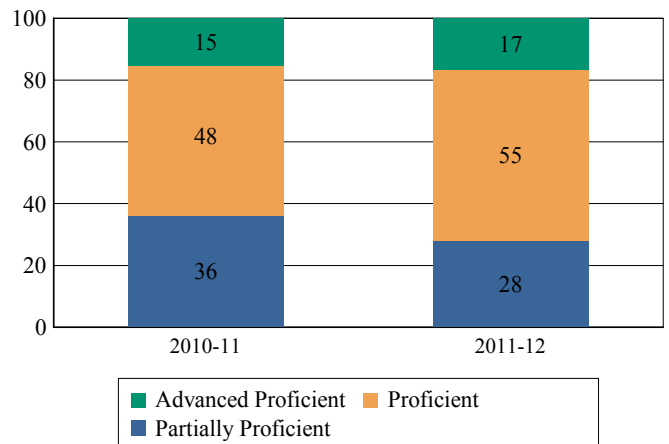
This table presents the percentage of students who scored in the Advanced Proficient, Proficient and Partially Proficient categories of the New Jersey Biology Competency Test (NJBC) in the latest school year.

Subgroups	Advanced	Proficient	Partially Proficient
Schoolwide	17%	55%	28%
White	18%	57%	26%
Black	-	-	-
Hispanic	-	-	-
American Indian	N/A	N/A	N/A
Asian	-	-	-
Two or More Races	N/A	N/A	N/A
Students with Disability	6%	44%	50%
Limited English Proficient Students	-	-	-
Economically Disadvantaged Students	10%	61%	29%

Data is presented for subgroups when the count is high enough under NCLB suppression rules.

**Proficiency Trends - Biology**

This graph presents the percentage of students who scored in the Advanced Proficient, Proficient, and Partially Proficient categories of the Biology Competency Test over the last two years.





State of New Jersey

29-4950-050

**COLLEGE AND CAREER READINESS**

OCEAN  
SOUTHERN REGIONAL

GRADE SPAN 09-12

SOUTHERN REG HIGH  
90 CEDAR BRIDGE ROAD  
MANAHAWKIN, NJ 08050-3022

Students in high schools begin to demonstrate college readiness behaviors long before they actually graduate from high school. Among those behaviors are taking college entrance exams and challenging themselves with rigorous course work. The table below presents five such indicators: the percentage of students enrolled in the 12th grade who took the SAT, the percentage of 10th and 11th graders who took the PSAT, the percentage of students who scored above the SAT benchmark of 1550, the percentage of 11th and 12th graders who took at least one AP test in English, math, social studies or science, and the percentage of those AP tests that were scored a 3 or higher.

The first column - Schoolwide Performance - represents the outcomes for these particular indicators in the school. The second column - Peer School Percentile Rank - indicates how the school's performance compares to its group of peer schools. For example, a school whose peer school rank is 65 in SAT participation has a higher SAT Participation than 65% of its peer group. The third column - Statewide Percentile Rank - indicates how the school's performance compares to schools across the state. The fourth column - Statewide Target - provides the statewide targets for each of these indicators. The last column - Met Target? - indicates whether the School Performance met or exceeded the statewide target.

The Summary row presents the averages of the peer school percentile ranks, the average of statewide percentile ranks and the percentage of statewide targets met.

College and Career Readiness Indicators	Schoolwide Performance	Peer Rank (Percentile)	Statewide Rank (Percentile)	Statewide Target	Met Target?
% of Students Participating in SAT	64%	3	25	80%	NO
% of Students Participating in PSAT	28%	3	19	60%	NO
% of Students Scoring Above 1550 on SAT	40%	43	54	40%	YES
% of Students Taking at least one AP Test in English, Math, Social Studies or Science	12%	23	36	35%	NO
% of AP Tests in English, Math, Social Studies or Science with Score 3 or Greater	58%	17	40	75%	NO
<b>Summary</b>		<b>18</b>	<b>35</b>		<b>20%</b>

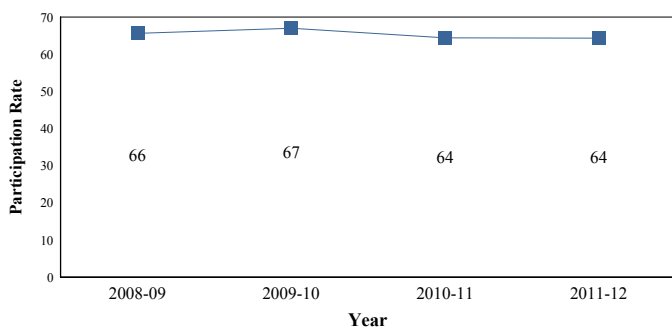
**College Readiness Test Participation**

The first column of the table below presents the percentage of students enrolled in the 12th grade who took the SAT and the percentage of students enrolled in 10th and 11th grade who took the PSAT. The second column provides the average across the school's peer group for these two metrics.

2011-12 % of Students	School	Peer Avg.	State Avg.
Participating in SAT	64.3%	76.0%	74.4%
Participating in PSAT	27.6%	56.3%	52.8%

**Participation Trends - SAT Testing**

This graph presents the participation rate in the SAT over the last four years.



**AP Participation - 'Unique' Students**

The table below presents the proportion of 'unique' students enrolled in at least 11th and 12th grade i.e, each student is counted once regardless of how many AP courses he/she may take. The table also presents the proportion of how many 'unique' students took at least one AP test to the school's enrollment in 11th and 12th grade.

2011-12 % of Students Taking	School	Peer Avg.	State Avg.
One or More Course	23.7%	29.3%	29.7%
One or More Test	16.5%	19.6%	24.0%
At least one AP Test in English, Math, Social Studies or Science	11.6%	16.2%	18.7%

Note: Students who are enrolled in AP coursework or take AP tests in grades other than 11th and 12th are included in the numerator of this calculation.

**Advanced Placement (AP) Test Results**

This table presents the percentage of all AP tests taken by students enrolled in the school that were scored as 3 or Greater.

2011-12 % of AP Tests	School	Peer Avg.	State Avg.
Scored 3 or Greater	70.1%	75.2%	75.1%
Scored 3 or Greater in English, Math, Social Studies or Science	58.2%	74.9%	74.5%



State of New Jersey

29-4950-050

**COLLEGE AND CAREER READINESS**

OCEAN  
SOUTHERN REGIONAL

GRADE SPAN 09-12

SOUTHERN REG HIGH  
90 CEDAR BRIDGE ROAD  
MANAHAWKIN, NJ 08050-3022

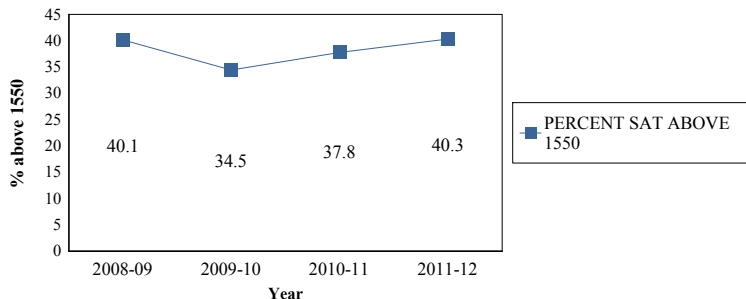
**Scholastic Assessment Test (SAT) Results**

This table presents the percentage of students who achieved a composite SAT score of 1550 or higher. The SAT benchmark score of 1550 (Critical Reading, Mathematics and Writing Score combined) indicates a 65 percent likelihood of achieving a B- average or higher during the first year of college, which in turn has been found by the College Board's research to be indicative of a high likelihood of college success and completion.

2011-12	School	Peer Avg.	State Avg.
% of Students Scoring Above 1550 on SAT	40%	44%	43%

**SAT Benchmark Trends**

This chart presents the percentage of students who achieved a composite SAT score of 1550 or higher over the past four years.



**Composite SAT Score**

This chart presents the average composite SAT score from the last academic year for students enrolled in this school as well as the average scores achieved in Critical Reading, Mathematics and Writing. The averages from this school's peer group are also presented.

2011-12	School	Peer Avg.	State Avg.
Composite SAT Score	1,480.0	1,520	1,504
Critical Reading	488.6	501	492
Mathematics	506.5	519	517
Writing	485.1	499	496

This chart presents the scores achieved in Critical Reading, Mathematics and Writing by the students at the 25th percentile, the 50th percentile and the 75th percentile of the school's distribution of SAT scores.

2011-12	Critical Reading	Mathematics	Writing
75th Percentile	530.0	570.0	550.0
50th Percentile	480.0	510.0	480.0
25th Percentile	430.0	460.0	422.5

**AP Courses Offered**

This table presents the count of students enrolled in each AP course offered in this school in the first column. The second column presents the count of tests taken in each AP course. The numbers may not match as some students do not take the test in the same year as they take the course and some students may take the course without taking the test or vice versa.

AP Course Name	Students Enrolled	Students Tested
AP U.S. History	80	56
AP Psychology	65	33
AP Statistics	58	50
AP English Language and Composition	52	27
AP Calculus AB	51	24
AP Biology	44	28
AP U.S. Government and Politics	24	10
AP Chemistry	18	11
AP Music Theory	9	4
AP Spanish Language	9	5
AP Studio Art—General Portfolio	4	0



State of New Jersey

29-4950-050

**GRADUATION AND POST-SECONDARY**

**SOUTHERN REG HIGH**

**OCEAN**

**90 CEDAR BRIDGE ROAD**

**SOUTHERN REGIONAL**

**GRADE SPAN 09-12**

**MANAHAWKIN, NJ 08050-3022**

This section of the performance report presents data about graduation, dropout and post-secondary attendance. The graduation rate is calculated according to the NCLB Cohort methodology as required by the United States Department of Education. Dropout rates are calculated from student-level data submitted by districts for students officially classified as dropouts. The graduation rate plus the dropout rate will likely not total to 100% due to some students who are continuing past the 4th year of enrollment to complete graduation requirements.

The first column - Schoolwide Performance - represents the outcomes for these particular indicators in this school. The second column - Peer School Percentile Rank - indicates how the school's performance compares to its group of peer schools. For example, a school whose peer school rank is 65 in Graduation Rate has a higher Graduation Rate than 65% of its peer group. The third column - Statewide Percentile Rank - indicates how the school's performance compares to schools across the state. The fourth column - Statewide Target - provides the statewide targets for each of these indicators. The Statewide Target for Graduation Rate was established pursuant to NJDOE's NCLB Accountability Workbook. The last column - Met Target - indicates whether the School Performance met or exceeded the statewide target.

The Summary row presents the averages of the peer school percentile ranks, the average of statewide percentile ranks and the percentage of statewide targets met.

Graduation & Post Secondary Indicators	Schoolwide Performance	Peer Rank (Percentile)	Statewide Rank (Percentile)	Statewide Targets	Met Target
Overall Graduation Rate	88.6%	23	36	75%	YES
Dropout Rate	2.2%	23	25	2%	NO
<b>SUMMARY - Graduation &amp; Post-Secondary</b>		<b>23</b>	<b>31</b>		<b>50%</b>

**Graduation Rate by Subgroup**

This table presents for all NCLB-identified subgroups the “4-year Adjusted Graduation Rate.” This rate calculates the percentage of students who are awarded a regular, high school diploma within four years of becoming a first-time ninth grader. The rate is adjusted to account for students who ‘transfer-in’ and for students who are verified as ‘transfers-out’.

	School	State Target
<b>Schoolwide</b>	89%	75%
White	88.7%	
Black	100%	
Hispanic	75%	
American Indian	100%	
Asian	100%	
Native Hawaiian	N/A	
Two or More Races	100%	
Students with Disability	75.9%	
Limited English Proficient Students	100%	
Economically Disadvantaged Students	82.7%	

**Dropout Rate by Subgroup**

This table presents for all NCLB-identified subgroups the Dropout rate. This rate calculates the percentage of students who are classified as dropouts who were identified four years earlier as first-time ninth graders. The rate is adjusted to account for students who ‘transfer-in’ and for students who are verified as ‘transfers-out’.

	School	State Target
<b>Schoolwide</b>	2.2%	2%
White	1.8%	
Black	2.4%	
Hispanic	2.9%	
American Indian	0%	
Asian	0%	
Native Hawaiian	N/A	
Two or More Races	0%	
Students with Disability	2.7%	
Limited English Proficient Students	0%	
Economically Disadvantaged Students	3.8%	



**GRADUATION AND POST-SECONDARY**

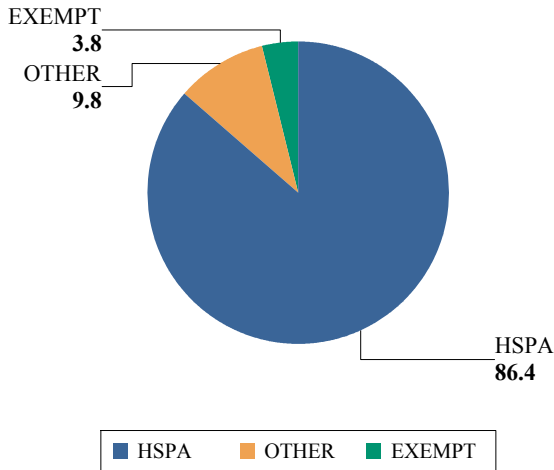
OCEAN  
SOUTHERN REGIONAL

GRADE SPAN 09-12

SOUTHERN REG HIGH  
90 CEDAR BRIDGE ROAD  
MANAHAWKIN, NJ 08050-3022

**Graduation Pathway Rates**

This chart presents the percentage of high school graduates who graduated by passing both sections of the HSPA, who were exempt from passing the HSPA, or who demonstrated proficiency through an alternative pathway such as through the Alternative High School Assessment, achievement of the 'Just Proficient Mean' or an appeal process.



**Extended Year Graduation Rate**

The chart below presents the 4-year and 5-year graduation rate for the prior school year's cohort in addition to the 4-year graduation rate for last year's cohort.

Class of	4-year Rate	5-year Rate
2011	88 %	91 %
2012	89 %	

**Post-Secondary Enrollment Rates**

This chart presents the enrollment rates of this school's high school graduates, 16-months after high school graduation. The data is from the National Student Clearinghouse which reports that it collects student-level enrollment data from 95% of Institutions of Higher Education nationwide.

	School
<b>Schoolwide</b>	43%
White	42.5%
Black	50%
Hispanic	36.8%
American Indian	100%
Asian	66.7%
Native Hawaiian	N/A
Two or More Races	N/A
Students with Disability	12.1%
Economically Disadvantaged Students	40%



**SCHOOL CLIMATE**

OCEAN  
SOUTHERN REGIONAL

GRADE SPAN 09-12

29-4950-050  
SOUTHERN REG HIGH  
90 CEDAR BRIDGE ROAD  
MANAHAWKIN, NJ 08050-3022

**Length of School Day**

This table presents the amount of time a school is in session for a typical student on a normal school day.

	School
2011-12	6 Hrs 27 Mins

**Student Suspension Rate**

This table presents the percentage of students who were suspended one or more times during the school year.

	School
2011-12	7.8%

**Instructional Time**

This table presents the amount of time that a typical student is engaged in instructional activities under the supervision of a certified teacher.

2011-12	School
Full Time	5 Hrs 35 Mins.
Shared Time	2 Hrs. 14 Mins.

**Student Expulsions**

This table presents the number of students who were expelled from the school and district during the school year.

	School
2011-12	0

**Student to Staff Ratio**

This table presents the count of students per faculty member or administrator in the school. All staff are counted in full-time equivalents.

2011-12	School
Faculty	12.1
Administrators	228.5

**SCHOOL PEER GROUP**

**SOUTHERN REG HIGH**

**29-4950-050**

This table presents the list of peer schools in alphabetical order by county name that was created specifically for this school (highlighted in yellow). Peer schools are drawn from across the state and represent schools that have similar grade configurations and that are educating students of similar demographic characteristics, as measured by enrollment in Free/Reduced Lunch Programs, Limited English Proficiency or Special Education Programs.

<u>COUNTY NAME</u>	<u>DISTRICT NAME</u>	<u>SCHOOL NAME</u>	<u>CDS</u> <u>CODE</u>	<u>GRADE</u> <u>SPAN</u>	<u>FRPL</u>	<u>LEP</u>	<u>SpED</u>
BERGEN	SADDLE BROOK TWP	SADDLE BROOK MID HIGH SCH	03-4610-050	07-12	18.9%	0.5%	19.3%
BERGEN	WOOD-RIDGE BORO	WOOD RIDGE HIGH	03-5830-050	09-12	17.9%	0.0%	10.0%
BURLINGTON	BURLINGTON TWP	BURLINGTON TWP HIGH	05-0620-010	09-12	17.9%	0.3%	12.1%
BURLINGTON	LENAPE REGIONAL	LENAPE HIGH SCHOOL	05-2610-050	09-12	12.8%	0.3%	13.2%
BURLINGTON	NORTHERN BURLINGTON REG	N BURL CO REG HIGH SCHOOL	05-3690-050	09-12	10.2%	0.3%	14.3%
BURLINGTON	RANCOCAS VALLEY REGIONAL	RANCOCAS VALLEY REG H	05-4320-050	09-12	19.2%	0.4%	16.0%
CAMDEN	AUDUBON BORO	AUDUBON HIGH	07-0150-010	07-12	19.5%	0.3%	20.7%
CAMDEN	CHERRY HILL TWP	CHERRY HILL HIGH EAST	07-0800-030	09-12	10.6%	0.0%	10.0%
CAMDEN	CHERRY HILL TWP	CHERRY HILL HIGH WEST	07-0800-040	09-12	25.6%	0.0%	16.3%
CAMDEN	HADDON HEIGHTS BORO	HADDON HEIGHTS JR SR HS	07-1880-050	07-12	16.9%	0.1%	12.7%
CAMDEN	HADDON TWP	HADDON TWP HIGH	07-1890-050	09-12	11.0%	1.0%	13.6%
ESSEX	MONTCLAIR TOWN	MONTCLAIR HIGH	13-3310-050	09-12	17.5%	0.3%	17.8%
GLOUCESTER	KINGSWAY REGIONAL	KINGSWAY REG HIGH	15-2440-050	09-12	10.0%	0.3%	12.3%
GLOUCESTER	WASHINGTON TWP	WASHINGTON TWP H S	15-5500-010	09-12	16.1%	0.0%	14.2%
GLOUCESTER	WEST DEPTFORD TWP	WEST DEPTFORD HIGH	15-5620-050	09-12	21.1%	0.0%	12.2%
MERCER	HAMILTON TWP	HAMILTON EAST STEINERT	21-1950-050	09-12	10.2%	0.5%	13.0%
MIDDLESEX	SPOTSWOOD BORO	SPOTSWOOD HIGH	23-4970-040	09-12	12.9%	0.7%	13.1%
MONMOUTH	FREEHOLD REGIONAL	FREEHOLD BOROUGH HIGH	25-1650-050	09-12	17.6%	0.3%	15.2%
MONMOUTH	HAZLET TWP	RARITAN HIGH SCHOOL	25-2105-050	09-12	10.3%	0.7%	17.1%
MONMOUTH	MONMOUTH REGIONAL	MONMOUTH REG HIGH	25-3270-050	09-12	10.1%	1.3%	15.6%
MORRIS	BUTLER BORO	BUTLER HIGH	27-0630-020	09-12	13.5%	1.2%	19.5%
OCEAN	BRICK TWP	BRICK TWP MEMORIAL HIGH	29-0530-025	09-12	18.9%	0.0%	18.1%
OCEAN	LACEY TWP	LACEY TWP HIGH	29-2480-020	09-12	21.4%	0.1%	15.2%
OCEAN	SOUTHERN REGIONAL	SOUTHERN REG HIGH	29-4950-050	09-12	17.7%	0.5%	18.1%
OCEAN	TOMS RIVER REGIONAL	TOMS RIVER HIGH EAST	29-5190-030	09-12	17.1%	0.3%	12.4%
PASSAIC	LAKELAND REGIONAL	LAKELAND REG H	31-2510-050	09-12	14.3%	0.1%	12.7%
SALEM	PENNSVILLE	PENNSVILLE MEMORIAL H	33-4075-050	09-12	22.9%	0.0%	17.5%
SUSSEX	HIGH POINT REGIONAL	HIGH POINT REGIONAL H S	37-2165-030	09-12	11.4%	0.2%	13.5%
SUSSEX	VERNON TWP	VERNON TWP HIGH	37-5360-020	09-12	14.7%	0.2%	17.0%
WARREN	BELVIDERE TOWN	BELVIDERE HIGH	41-0280-020	09-12	13.0%	0.0%	12.2%
WARREN	WARREN HILLS REGIONAL	WARREN HILLS REG HIGH SCH	41-5465-050	09-12	14.2%	0.7%	16.5%



State of New Jersey

29-4950-060

OVERVIEW

OCEAN  
SOUTHERN REGIONAL

GRADE SPAN 07-08

SOUTHERN REG MIDDLE  
75 CEDAR BRIDGE ROAD  
MANAHAWKIN, NJ 08050-3056

This school's academic performance is **high when compared** to schools across the state. Additionally, its academic performance is **high when compared** to its peers. This school's college and career readiness **lags in comparison** to schools across the state. Additionally, its college and career readiness **significantly lags in comparison** to its peers. This school's student growth performance is **about average when compared** to schools across the state. Additionally, its student growth performance is **about average when compared** to its peers.

Performance Areas	Peer Rank (Percentile)	Statewide Rank (Percentile)	Percent of Targets Met
Academic Achievement	75	71	63%
College and Career Readiness	16	24	0%
Student Growth	52	51	100%

Improvement Status

N/A

Rationale

N/A

**Very High Performance** is defined as being equal to or above the 80.0th percentile.

**High Performance** is defined as being between the 60.0th and 79.9th percentiles.

**Average Performance** is defined as being between the 40.0th and 59.9th percentiles.

**Lagging Performance** is defined as being between the 20.0th and 39.9th percentiles.

**Significantly Lagging Performance** is defined as being equal to or below the 19.9th percentile.

**Peer Schools** are schools that have similar grade levels and students with similar demographic characteristics, such as the percentage of students qualifying for Free/Reduced Lunch, Limited English Proficiency programs or Special Education programs.

Academic Achievement

This school outperforms 71% of schools statewide as noted by its statewide percentile ranking and 75% of schools educating students with similar demographic characteristics as noted in its peer school percentile ranking in the performance area of Academic Achievement. Additionally, this school is meeting 63% of its performance targets in the area of Academic Achievement.



Academic Achievement measures the content knowledge students have in language arts literacy and math. For elementary and middle schools, this includes measures of the school's proficiency rate on both the Language Arts Literacy and Math sections of the New Jersey Assessment of Skills and Knowledge (NJ ASK). A proficiency rate is calculated by summing the count of students who scored either proficient or advanced proficient on the assessment and dividing by the count of valid test scores.

College and Career Readiness

This school outperforms 24% of schools statewide as noted by its statewide percentile ranking and 16% of schools educating students with similar demographic characteristics as noted in its peer school percentile ranking in the performance area of College and Career Readiness. Additionally, this school is meeting 0% of its performance targets in the area of College and Career Readiness.



College and Career readiness measures the degree to which students are demonstrating behaviors that are indicative of future attendance and/or success in college and careers. For all elementary and middle schools, this includes a measurement of how many students are chronically absent. For schools with middle school grades, it also includes a measurement of how many students take Algebra I in either seventh or eighth grade.

Student Growth

This school outperforms 51% of schools statewide as noted by its statewide percentile ranking and 52% of schools educating students with similar demographic characteristics as noted in its peer school percentile ranking in the performance area of Student Growth. Additionally, this school is meeting 100% percentage of its performance targets in the area of Student Growth.



Student Growth measures the performance of students from one year to the next on the New Jersey Assessment of Skills and Knowledge (NJ ASK) in Language Arts Literacy and Math when compared to students with a similar history of performance on NJ-ASK.



**DEMOGRAPHIC INFORMATION**

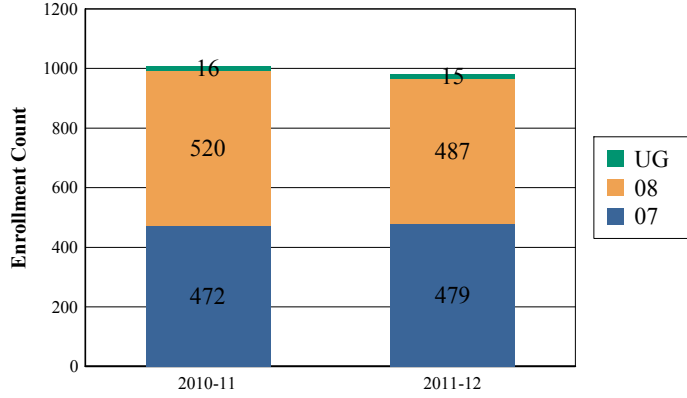
OCEAN  
SOUTHERN REGIONAL

GRADE SPAN 07-08

SOUTHERN REG MIDDLE  
75 CEDAR BRIDGE ROAD  
MANAHAWKIN, NJ 08050-3056

**Enrollment by Grade**

This graph presents the count of students who were 'on roll' by grade in October of each school year.

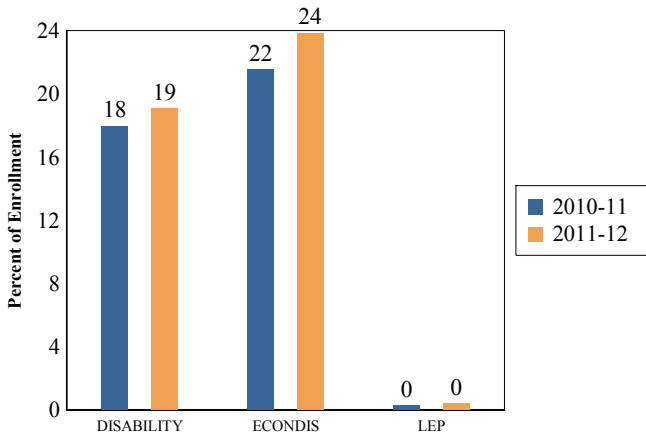


Total School Enrollment Trends

Note: "UG" represents the count of students who are 'on roll' in this school but who are educated in ungraded classrooms, meaning that the classrooms may contain students from multiple grade levels.

Total School Enrollment	
2010-11	1,008
2011-12	981

**Enrollment Trends by Program Participation**



**Current Year Enrollment by Program Participation**

2011-2012	Count of Students	% of Enrollment
Students with Disability	187	19%
Economically Disadvantaged Students	234	23.9%
Limited English Proficient Students	4	0.4%

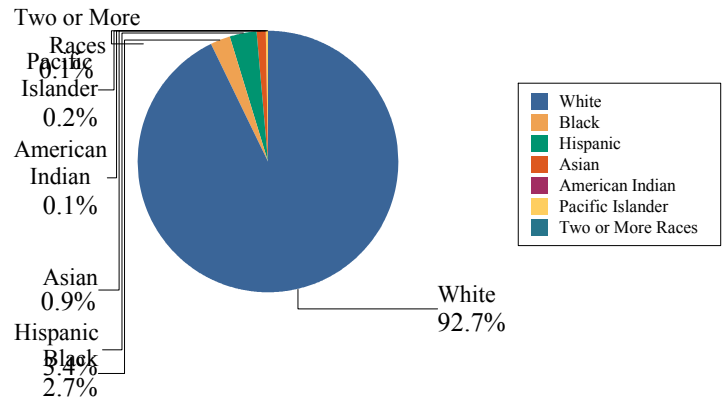
**Language Diversity**

This table presents the percentage of students who primarily speak each language in their home.

2011-12	Percent
English	98.1%
Spanish	1.5%
Hindi	0.1%
Russian	0.1%
Tagalog	0.1%
Vietnamese	0.1%

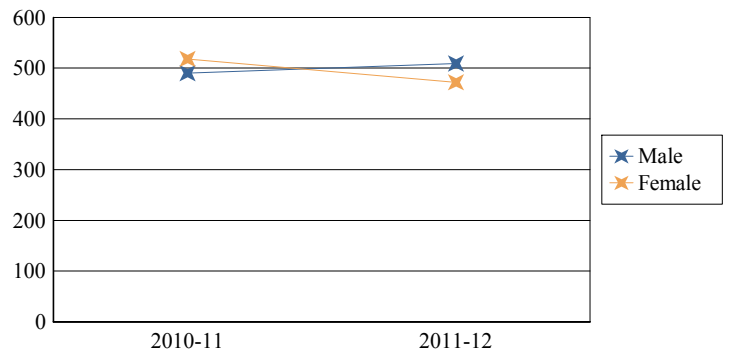
**Enrollment by Ethnic/Racial Subgroup**

This graph presents the percentages of enrollment for each subgroup defined by the No Child Left Behind Act of 2001



**Enrollment by Gender**

This graph presents the count of students by gender who were 'on roll' in October of each school year.



	Male	Female
2010-11	490	518
2011-12	509	472



State of New Jersey

29-4950-060

ACADEMIC ACHIEVEMENT

OCEAN  
SOUTHERN REGIONAL

GRADE SPAN 07-08

SOUTHERN REG MIDDLE  
75 CEDAR BRIDGE ROAD  
MANAHAWKIN, NJ 08050-3056

Academic Achievement measures the content knowledge students have in language arts literacy and math. In elementary and middle school, this includes the outcomes of the New Jersey Assessment of Skills and Knowledge (NJASK). The first column - Schoolwide Performance - in the table below includes measures of the total schoolwide proficiency rate in both language arts literacy and math across multiple administrations of the assessment. The second column - Peer School Percentile Rank - indicates where the school's proficiency rate compares to its group of peer schools. For example, a school that has a peer school percentile rank of 65 has a proficiency rate that is higher than 65% of its peer schools. The third column - Statewide Percentile Rank - indicates where the school's proficiency rate compares to schools across the state. For example, a school that has a statewide percentile rank of 30 has a proficiency rate that is higher than 30% of all schools with HSPA scores statewide. The last column - Percent of Targets Met - presents the percentage of progress targets met as defined by the NJDOE's NCLB waiver.

The Summary row presents the averages of the peer school percentile ranks, the average of statewide percentile ranks and the percentage of statewide targets met.

Academic Achievement Indicators	Schoolwide Performance	Peer Rank (Percentile)	State Rank (Percentile)	Percent of Targets Met
NJASK Language Arts Proficiency and above	85%	97	83	100%
NJASK Math Proficiency and above	78%	52	59	25%
<b>SUMMARY - Academic Achievement</b>		75	71	63%

NCLB Progress Targets - Language Arts Literacy

This table presents the Progress Targets as uniquely calculated for each subgroup in each school under NJDOE's NCLB waiver. The methodology - as defined by the United States Department of Education - is calculated so that each subgroup will halve the gap between their 2011 proficiency rate and 100% proficiency by 2017.

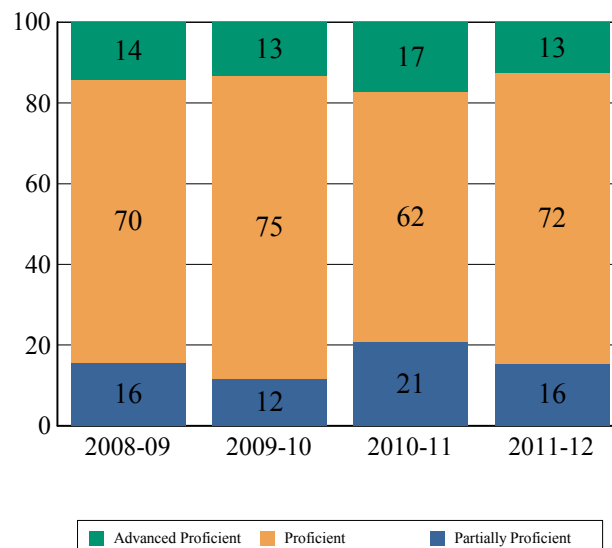
Subgroups	Total Valid Scores	Pass Rate	Target	Met Target?
Schoolwide	464	84.5	80.8	YES
White	430	86.3	82.2	YES
Black	-	-		--
Hispanic	-	-		--
American Indian	-	-		--
Asian	-	-		--
Two or More Races	-	-		--
Students with Disability	87	47.1	50	YES*
Limited English Proficient Students	-	-		--
Economically Disadvantaged Students	119	68.1	68	YES

YES\* = Met Progress Target(Confidence Interval Applied)

Data is presented for subgroups when the count is high enough under NCLB suppression rules.

Proficiency Trends - Language Arts Literacy

This graph presents the percentage of students who scored in the Advanced Proficient, Proficient and Partially Proficient categories of the statewide Language Arts Literacy assessment over the prior four years.





**ACADEMIC ACHIEVEMENT**

OCEAN  
SOUTHERN REGIONAL

GRADE SPAN 07-08

**NCLB Progress Targets - Math**

This table presents the Progress Targets as uniquely calculated for each subgroup in each school under NJDOE's NCLB waiver. The methodology - as defined by the United States Department of Education - is calculated so that each subgroup will halve the gap between their 2011 proficiency rate and 100% proficiency by 2017.

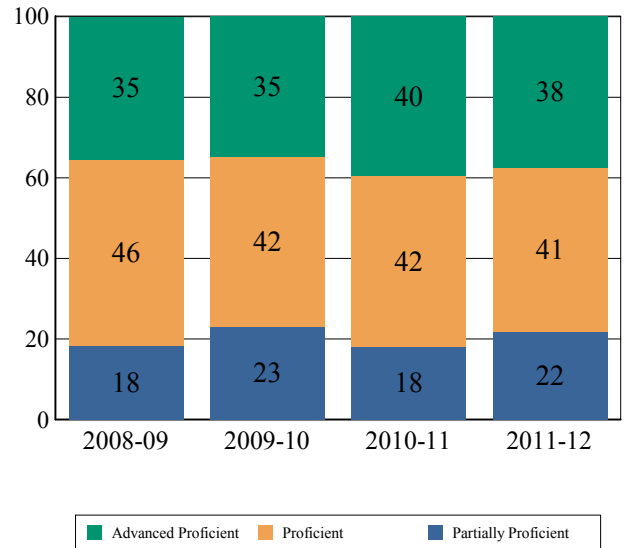
Subgroups	Total Valid Scores	Pass Rate	Target	Met Target?
Schoolwide	465	78.2	83.4	NO
White	431	80.3	84.9	NO
Black	-	-		--
Hispanic	-	-		--
American Indian	-	-		--
Asian	-	-		--
Two or More Races	-	-		--
Students with Disability	87	31	53.1	NO
Limited English Proficient Students	-	-		--
Economically Disadvantaged Students	119	63.8	70.7	YES*

YES\* = Met Progress Target (Confidence Interval Applied)

Data is presented for subgroups when the count is high enough under NCLB suppression rules.

**Proficiency Trends - Math**

This graph presents the percentage of students who scored in the Advanced Proficient, Proficient and Partially Proficient categories of the statewide Math assessment over the prior four years.





**ACADEMIC ACHIEVEMENT**

**OCEAN**  
**SOUTHERN REGIONAL**

**GRADE SPAN 07-08**

29-4950-060

**SOUTHERN REG MIDDLE**  
**75 CEDAR BRIDGE ROAD**  
**MANAHAWKIN, NJ 08050-3056**

**NJASK Results - Language Arts Literacy Grade Level - 07**

This table presents the grade level proficiency results, as measured by NJASK, in Advanced Proficient, Proficient, and Partially Proficient categories for all appropriate subgroups.

Subgroups	Advanced Proficient	Proficient	Partially Proficient
Schoolwide	-	-	-
White	-	-	-
Black	-	-	-
Hispanic	-	-	-
American Indian	N/A	N/A	N/A
Asian	N/A	N/A	N/A
Two or More Races	N/A	N/A	N/A
Students w/ Disability	-	-	-
Limited English Proficient Students	-	-	-
Economically Disadvantaged Students	-	-	-

Data is presented for subgroups when the count is high enough under NCLB suppression rules.

**NJASK Results - Language Arts Literacy Grade Level - 08**

This table presents the grade level proficiency results, as measured by NJASK, in Advanced Proficient, Proficient, and Partially Proficient categories for all appropriate subgroups.

Subgroups	Advanced Proficient	Proficient	Partially Proficient
Schoolwide	13%	72%	15%
White	13%	73%	14%
Black	7%	43%	50%
Hispanic	0%	75%	25%
American Indian	-	-	-
Asian	-	-	-
Two or More Races	-	-	-
Students w/ Disability	1%	47%	52%
Limited English Proficient Students	-	-	-
Economically Disadvantaged Students	2%	67%	31%

Data is presented for subgroups when the count is high enough under NCLB suppression rules.

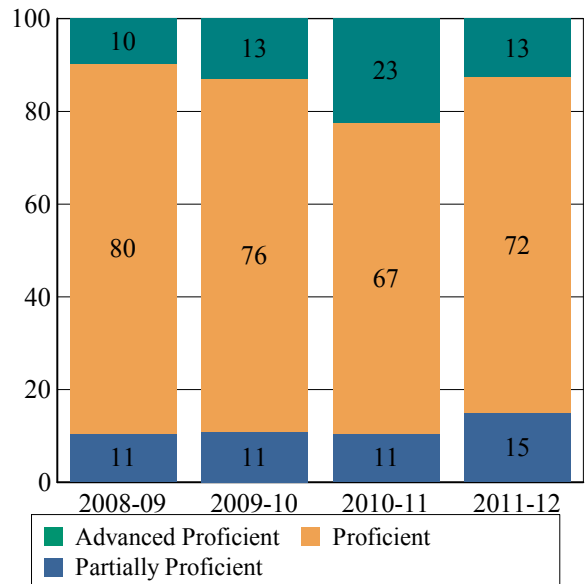
**NJASK Proficiency Trends - Language Arts Literacy - Grade Level - 07**

This graph presents the grade level outcomes in the categories of Advanced Proficient, Proficient, and Partially Proficient over the last four years.

**Data is suppressed to protect the confidentiality of the students.**

**NJASK Proficiency Trends - Language Arts Literacy - Grade Level - 08**

This graph presents the grade level outcomes in the categories of Advanced Proficient, Proficient, and Partially Proficient over the last four years.





**ACADEMIC ACHIEVEMENT**

OCEAN  
SOUTHERN REGIONAL

GRADE SPAN 07-08

SOUTHERN REG MIDDLE  
75 CEDAR BRIDGE ROAD  
MANAHAWKIN, NJ 08050-3056

**2011 National Assessment Educational Progress (NAEP)**

The National Assessment of Educational Progress (NAEP) is the largest national assessment of what our nation's students know and can do. NAEP assesses fourth-, eighth-, and twelfth-grade students in subjects such as reading, mathematics, science, and writing. The reporting of NAEP scores on state report cards is a federal mandate. The results of NAEP are also published as the Nation's Report Card, and are available for the nation, states, and, in some cases, urban districts. The NAEP scores on the report card include grades four and eight 2011 reading and math scores for New Jersey which are the last scores published. For subgroup outcomes, visit :

<http://www.nj.gov/education/pr/2013/naep/naep4read.html>

For more information, visit <http://nces.ed.gov/nationsreportcard/>

**Proficiency Percentages**

Grade 4 Reading	State/Nation	Below Basic	Basic	Proficient	Advanced
All Students	State (NJ)	21.9	34.2	32.5	11.4
All Students	Nation	33.8	33.8	24.9	7.5

**2011 National Assessment Educational Progress (NAEP)**

The National Assessment of Educational Progress (NAEP) is the largest national assessment of what our nation's students know and can do. NAEP assesses fourth-, eighth-, and twelfth-grade students in subjects such as reading, mathematics, science, and writing. The reporting of NAEP scores on state report cards is a federal mandate. The results of NAEP are also published as the Nation's Report Card, and are available for the nation, states, and, in some cases, urban districts. The NAEP scores on the report card include grades four and eight 2011 reading and math scores for New Jersey which are the last scores published. For subgroup outcomes, visit :

<http://www.nj.gov/education/pr/2013/naep/naep8read.html>

For more information, visit <http://nces.ed.gov/nationsreportcard/>

**Proficiency Percentages**

Grade 8 Reading	State/Nation	Below Basic	Basic	Proficient	Advanced
All Students	State (NJ)	15.8	39.5	38.6	6.2
All Students	Nation	25.3	43.0	28.6	3.0



**ACADEMIC ACHIEVEMENT**

OCEAN  
SOUTHERN REGIONAL

GRADE SPAN 07-08

**NJASK Results - Math Grade Level - 07**

**NJASK Proficiency Trends - Math - Grade Level - 07**

This table presents the grade level proficiency results, as measured by NJASK, in Advanced Proficient, Proficient, and Partially Proficient categories for all appropriate subgroups.

This graph presents the grade level outcomes in the categories of Advanced Proficient, Proficient, and Partially Proficient over the last four years.

Subgroups	Advanced Proficient	Proficient	Partially Proficient
Schoolwide	-	-	-
White	-	-	-
Black	-	-	-
Hispanic	-	-	-
American Indian	N/A	N/A	N/A
Asian	N/A	N/A	N/A
Two or More Races	N/A	N/A	N/A
Students w/ Disability	-	-	-
Limited English Proficient Students	-	-	-
Economically Disadvantaged Students	-	-	-

**Data is suppressed to protect the confidentiality of the students.**

Data is presented for subgroups when the count is high enough under NCLB suppression rules.

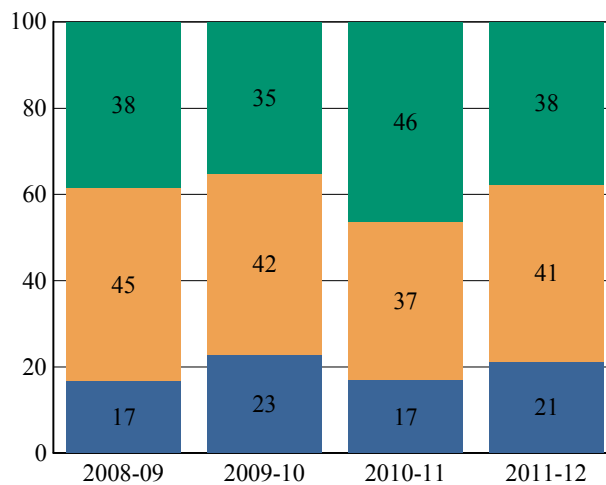
**NJASK Results - Math Grade Level - 08**

**NJASK Proficiency Trends - Math - Grade Level - 08**

This table presents the grade level proficiency results, as measured by NJASK, in Advanced Proficient, Proficient, and Partially Proficient categories for all appropriate subgroups.

This graph presents the grade level outcomes in the categories of Advanced Proficient, Proficient, and Partially Proficient over the last four years.

Subgroups	Advanced Proficient	Proficient	Partially Proficient
Schoolwide	38%	41%	21%
White	39%	41%	20%
Black	29%	14%	57%
Hispanic	0%	50%	50%
American Indian	-	-	-
Asian	-	-	-
Two or More Races	-	-	-
Students w/ Disability	7%	24%	69%
Limited English Proficient Students	-	-	-
Economically Disadvantaged Students	17%	47%	35%



Data is presented for subgroups when the count is high enough under NCLB suppression rules.



State of New Jersey

29-4950-060

ACADEMIC ACHIEVEMENT

SOUTHERN REG MIDDLE

OCEAN

75 CEDAR BRIDGE ROAD

SOUTHERN REGIONAL

GRADE SPAN 07-08

MANAHAWKIN, NJ 08050-3056

2011 National Assessment Educational Progress (NAEP)

The National Assessment of Educational Progress (NAEP) is the largest national assessment of what our nation's students know and can do. NAEP assesses fourth-, eighth-, and twelfth-grade students in subjects such as reading, mathematics, science, and writing. The reporting of NAEP scores on state report cards is a federal mandate. The results of NAEP are also published as the Nation's Report Card, and are available for the nation, states, and, in some cases, urban districts. The NAEP scores on the report card include grades four and eight 2011 reading and math scores for New Jersey which are the last scores published. For subgroup outcomes, visit :

<http://www.nj.gov/education/pr/2013/naep/naep4math.html>

For more information, visit <http://nces.ed.gov/nationsreportcard/>

Proficiency Percentages

Grade 4 Math	State/Nation	Below Basic	Basic	Proficient	Advanced
All Students	State (NJ)	11.0	38.3	40.9	9.8
All Students	Nation	18.1	42.3	33.2	6.5

2011 National Assessment Educational Progress (NAEP)

The National Assessment of Educational Progress (NAEP) is the largest national assessment of what our nation's students know and can do. NAEP assesses fourth-, eighth-, and twelfth-grade students in subjects such as reading, mathematics, science, and writing. The reporting of NAEP scores on state report cards is a federal mandate. The results of NAEP are also published as the Nation's Report Card, and are available for the nation, states, and, in some cases, urban districts. The NAEP scores on the report card include grades four and eight 2011 reading and math scores for New Jersey which are the last scores published. For subgroup outcomes, visit :

<http://www.nj.gov/education/pr/2013/naep/naep8math.html>

For more information, visit <http://nces.ed.gov/nationsreportcard/>

Proficiency Percentages

Grade 8 Math	State/Nation	Below Basic	Basic	Proficient	Advanced
All Students	State (NJ)	17.8	35.3	33.2	13.6
All Students	Nation	27.7	38.8	25.7	7.8

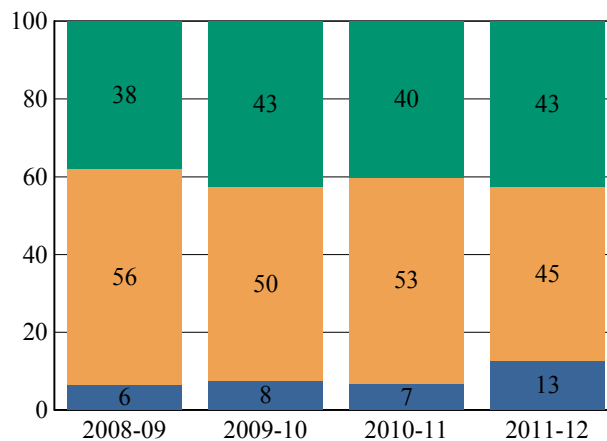
NJASK Results - Science Grade Level - 08

NJASK Proficiency Trends - Science - Grade Level - 08

This table presents the grade level proficiency results, as measured by NJASK, in Advanced Proficient, Proficient, and Partially Proficient categories for all appropriate subgroups.

This graph presents the grade level outcomes in the categories of Advanced Proficient, Proficient, and Partially Proficient over the last four years.

Subgroups	Advanced Proficient	Proficient	Partially Proficient
Schoolwide	43%	45%	13%
White	44%	44%	12%
Black	21%	43%	36%
Hispanic	17%	67%	17%
American Indian	-	-	-
Asian	-	-	-
Two or More Races	-	-	-
Students w/ Disability	12%	42%	47%
Limited English Proficient Students	-	-	-
Economically Disadvantaged Students	27%	53%	21%



■ Advanced Proficient 
 ■ Proficient 
 ■ Partially Proficient

Data is presented for subgroups when the count is high enough under NCLB suppression rules.



**COLLEGE AND CAREER READINESS**

OCEAN  
SOUTHERN REGIONAL

GRADE SPAN 07-08

SOUTHERN REG MIDDLE  
75 CEDAR BRIDGE ROAD  
MANAHAWKIN, NJ 08050-3056

Students in both elementary and middle schools begin to demonstrate college readiness behaviors long before they even enter high school. Among the behaviors that research has shown to be indicative of success and college and career readiness are regularly attending school and challenging themselves with rigorous course work. First, the table presents the percentage of students, as measured against the school's enrollment in seventh and eighth grade, who were reported via NJSMART as being enrolled in Algebra I. The table also presents the percentage of students who were chronically absent during the prior school year. A chronically absent student is a student who was not present for any reason for more than 10% of the total days possible for that individual student.

The first column - Schoolwide Performance - represents the outcomes for these particular indicators in this school. The second column - Peer School Percentile Rank - indicates how the school's performance compares to its group of peer schools. For example, a school whose peer school rank is 65 in Algebra I Enrollment has a higher Algebra I Enrollment than 65% of its peer group. The third column - Statewide Percentile Rank - indicates how the school's performance compares to schools across the state. The fourth column - Statewide Target - provides the statewide targets for each of these indicators. The last column - Met Target? - indicates whether the School Performance met or exceeded the statewide target.

The Summary row presents the averages of the peer school percentile ranks, the average of statewide percentile ranks and the percentage of statewide targets met.

College and Career Readiness Indicators	School Performance	Peer Rank (Percentile)	Statewide Rank (Percentile)	Statewide Target	Met Target?
Students taking Algebra (%)	0%	0	0	20%	NO
Chronic Absenteeism (%)	8%	31	48	6%	NO
Summary		16	24		0%

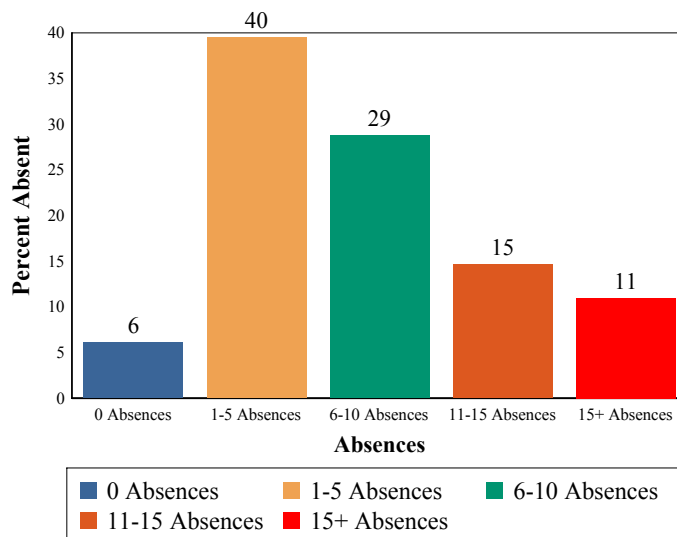
**Algebra I**

This table presents the percentage of seventh and eighth graders who were reported in the Algebra I course code in NJSMART and the percentage of those students who earned a C or higher in the course.

2011-12	School
Students taking Algebra I	0%
Algebra grade (C or better)	0%

**Absenteeism**

The chart below presents the percentage of students who were absent in each category of absence: 0 absences, 1- 5 absences, 6- 10 absences, 11 - 15 absences, and more than 15 absences. An absence is defined as being 'not present' and includes the days missed regardless of whether they were determined to be excused or unexcused by the school.





**STUDENT GROWTH**

**SOUTHERN REG MIDDLE  
75 CEDAR BRIDGE ROAD  
MANAHAWKIN, NJ 08050-3056**

**OCEAN  
SOUTHERN REGIONAL**

**GRADE SPAN 07-08**

This section of the performance report presents data about student growth, utilizing the Student Growth Percentile Methodology (SGP). SGP creates a measure of how students progressed in grades 4 through 8 in NJ ASK Language Arts Literacy and Math when compared to other students with a similar NJ ASK test score history. A short video explaining the methodology can be found here: <http://www.state.nj.us/education/njsmart/performance/>

The first column - Schoolwide Performance - presents the schoolwide median growth score in either Language Arts Literacy or Math for all students in the school. The second column - Peer Rank - indicates how the school's growth performance compares to its group of peer schools. The third column - Statewide Rank - indicates how a school compares to schools across the state. The last column - Met Target? - indicates whether the school's performance met or exceeded the target.

The summary row presents the averages of the peer school percentile ranks, the averages of statewide percentile ranks, the percentage of statewide targets met.

Student Growth Indicators	Schoolwide Performance	Peer Rank (Percentile)	Statewide Rank (Percentile)	Statewide Target	Met Target?
Student Growth on Language Arts	46	39	38	35	YES
Student Growth on Math	53	64	64	35	YES
		52	51		100%

**Student Growth**

This table presents for all students with growth scores the interaction between their proficiency level on NJASK and their growth scores. For example, in the top left cell the percentage of students who are both partially proficient AND also demonstrating low growth is displayed.

**Language Arts**

**Math**

	GROWTH		
	Low	Typical	High
<b>Partially Proficient</b>	12%	6%	3%
<b>Proficient</b>	25%	21%	20%
<b>Advanced Proficient</b>	1%	3%	8%

	GROWTH		
	Low	Typical	High
<b>Partially Proficient</b>	13%	5%	2%
<b>Proficient</b>	13%	15%	15%
<b>Advanced Proficient</b>	8%	9%	22%

**Low Growth** is defined as an **Student Growth Percentile** score less than 35.

**Typical Growth** is defined as an **Student Growth Percentile** score between 35 and 65.

**High Growth** is defined as a **Student Growth Percentile** score higher than 65.



State of New Jersey

29-4950-060

SOUTHERN REG MIDDLE  
75 CEDAR BRIDGE ROAD  
MANAHAWKIN, NJ 08050-3056

**WITHIN SCHOOL ACHIEVEMENT GAP**

OCEAN  
SOUTHERN REGIONAL

GRADE SPAN 07-08

This section of the performance report presents data about the achievement gap that exists within a school - as measured by the difference between the students' scale scores at the 25th and 75th percentile in the school, the so-called Interquartile Range (IQR). Taken together with an understanding of the overall and average achievement levels in the school, the IQR furthers an understanding of the range of student outcomes that exist in a school. A school gap smaller than the state gap indicates that the school's range of student outcomes is narrower than the state's while a school gap larger than the state gap indicates that the school's range of student outcomes is larger than the state's.

**Grade Level - 08**

**NJ ASK Language Arts 25th %ile vs 75th%ile**

This table presents the scale scores associated with students at the bottom (0th percentile), the 25th percentile, the 50th percentile, the 75th percentile and the top (99th percentile) of school's distribution

Percentile	Scale Score
99th	275
75th	238
50th	221
25th	207
0th	150

	Scale Score Gap - School	Scale Score Gap - State
25th vs 75th Gap	31	33

**Grade Level - 08**

**NJ ASK Math 25th %ile vs 75th%ile**

This table presents the scale scores associated with students at the bottom (0th percentile), the 25th percentile, the 50th percentile, the 75th percentile and the top (99th percentile) of school's distribution

Percentile	Scale Score
99th	300
75th	265
50th	233
25th	201
0th	105

	Scale Score Gap - School	Scale Score Gap - State
25th vs 75th Gap	64	64



**SCHOOL CLIMATE**

**SOUTHERN REG MIDDLE  
75 CEDAR BRIDGE ROAD  
MANAHAWKIN, NJ 08050-3056**

**OCEAN  
SOUTHERN REGIONAL**

**GRADE SPAN 07-08**

**Length of School Day**

This table presents the amount of time a school is in session for a typical student on a normal school day.

	School
2011-12	6 Hrs 27 Mins

**Student Suspension Rate**

This table presents the percentage of students who were suspended one or more times during the school year.

	School
2011-12	3.6%

**Instructional Time**

This table presents the amount of time that a typical student is engaged in instructional activities under the supervision of a certified teacher.

2011-12	School
Full Time	5 Hrs 54 Mins.
Shared Time	0 Hrs. 0 Mins.

**Student Expulsions**

This table presents the number of students who were expelled from the school and district during the school year.

	School
2011-12	0

**Student to Staff Ratio**

This table presents the count of students per faculty member or administrator in the school. All staff are counted in full-time equivalents.

2011-12	School
Faculty	11.5
Administrators	196.2

**SCHOOL PEER GROUP****SOUTHERN REG MIDDLE****29-4950-060**

This table presents the list of peer schools in alphabetical order by county name that was created specifically for this school (highlighted in yellow). Peer schools are drawn from across the state and represent schools that have similar grade configurations and that are educating students of similar demographic characteristics, as measured by enrollment in Free/Reduced Lunch Programs, Limited English Proficiency or Special Education Programs.

<u>COUNTY NAME</u>	<u>DISTRICT NAME</u>	<u>SCHOOL NAME</u>	<u>CDS</u> <u>CODE</u>	<u>GRADE</u> <u>SPAN</u>	<u>FRPL</u>	<u>LEP</u>	<u>SpED</u>
BURLINGTON	LUMBERTON TWP	LUMBERTON MIDDLE SCHOOL	05-2850-060	06-08	15.5%	0.0%	15.5%
BURLINGTON	MOUNT LAUREL TWP	T E HARRINGTON MIDDLE	05-3440-060	05-08	12.6%	0.5%	15.0%
BURLINGTON	NORTHERN BURLINGTON REG	N BURL CO REG MIDDLE SCH	05-3690-060	07-08	16.5%	0.1%	16.7%
CAMDEN	STRATFORD BORO	SAMUEL S YELLIN	07-5080-060	04-08	23.5%	0.0%	15.5%
CHARTERS	RENAISSANCE REGIONAL LEADERSHIP CS	RENAISSANCE REGIONAL LEADERSHIP CS	80-6044-927	KG-08	27.6%	0.0%	19.1%
ESSEX	MONTCLAIR TOWN	GLENFIELD MIDDLE	13-3310-116	06-08	14.0%	0.0%	13.7%
GLOUCESTER	WASHINGTON TWP	ORCHARD VALLEY MIDDLE	15-5500-050	06-08	24.7%	0.0%	18.1%
GLOUCESTER	WEST DEPTFORD TWP	WEST DEPTFORD MIDDLE	15-5620-130	05-08	24.2%	0.0%	17.9%
HUNTERDON	BLOOMSBURY BORO	BLOOMSBURY BOROUGH	19-0430-020	PK-08	15.9%	0.0%	13.2%
HUNTERDON	FLEMINGTON-RARITAN REG	J P CASE MIDDLE SCHOOL	19-1510-045	07-08	10.2%	0.2%	14.9%
MIDDLESEX	METUCHEN BORO	EDGAR	23-3120-070	05-08	10.3%	0.5%	13.9%
MIDDLESEX	WOODBRIIDGE TWP	COLONIA MIDDLE	23-5850-060	06-08	17.9%	0.0%	16.1%
MONMOUTH	FARMINGDALE BORO	FARMINGDALE ELEMENTARY	25-1490-050	PK-08	21.8%	0.0%	17.1%
MONMOUTH	TINTON FALLS	TINTON FALLS	25-5185-070	06-08	17.2%	0.4%	15.3%
MORRIS	MOUNT OLIVE TWP	MT OLIVE MIDDLE SCHOOL	27-3450-040	06-08	14.7%	1.0%	19.0%
MORRIS	ROXBURY TWP	EISENHOWER MIDDLE	27-4560-055	07-08	10.7%	0.3%	13.8%
OCEAN	PLUMSTED TWP	NEW EGYPT MIDDLE SCH	29-4190-080	06-08	16.0%	0.2%	16.6%
<b>OCEAN</b>	<b>SOUTHERN REGIONAL</b>	<b>SOUTHERN REG MIDDLE</b>	<b>29-4950-060</b>	<b>07-08</b>	<b>23.9%</b>	<b>0.4%</b>	<b>18.9%</b>
OCEAN	TOMS RIVER REGIONAL	TOMS RIVER INTERMEDIATE E	29-5190-060	06-08	20.0%	0.0%	14.6%
OCEAN	TOMS RIVER REGIONAL	TOMS RIVER INTERMEDIATE S	29-5190-061	06-08	30.0%	0.1%	17.6%
SALEM	PENNSVILLE	PENNSVILLE MIDDLE	33-4075-055	06-08	29.7%	0.4%	20.0%
SUSSEX	HAMBURG BORO	HAMBURG	37-1930-060	PK-08	22.1%	0.7%	19.9%
SUSSEX	STANHOPE BORO	VALLEY ROAD SCHOOL	37-5030-050	KG-08	15.3%	0.0%	14.9%
SUSSEX	VERNON TWP	GLEN MEADOW	37-5360-025	07-08	16.3%	0.3%	17.0%
UNION	SPRINGFIELD TWP	FLORENCE M GAUDINEER	39-5000-060	06-08	10.0%	0.8%	15.8%
WARREN	HACKETTSTOWN	HACKETTSTOWN MIDDLE	41-1870-060	05-08	24.1%	0.7%	19.2%
WARREN	HOPE TWP	HOPE TWP	41-2250-050	PK-08	13.9%	0.0%	13.8%
WARREN	OXFORD TWP	OXFORD CENTRAL	41-3890-050	PK-08	13.0%	0.0%	11.9%
WARREN	WARREN HILLS REGIONAL	WARREN HILLS REG MIDD SCH	41-5465-060	07-08	19.6%	0.6%	19.3%