

April 2011 Vol. 32 No. 4

# Monthly Communicator

Chris Christie, Governor  
Kim Guadagno, Lt. Governor

Jennifer Velez, Commissioner  
David C. Alexander, Director

**D  
D  
H  
H**



## INSIDE

Page 3  
Rehab Center  
Enters into  
Consent  
Judgment

Page 4  
Music Research  
Study for Adult C.I.  
Users

Page 6  
Finding New  
Homes for "Old"  
Devices

*Produced by DHS  
Office of Publications*



# *SPRING into Fun!*

See pages 8 and 9



## Director's Corner

By David Alexander, Director, Division of the Deaf and Hard of Hearing (DDHH)

**A**s you are aware, Governor Chris Christie recently presented his Fiscal Year 2012 State Budget address on February 22, 2011. With the inclusion of recommendations offered by respective state divisions, the proposed budget is reasonable. It largely protects services for the most vulnerable residents of our state, including people who are Deaf and hard of hearing.

The governor proposes an appropriation for DDHH that remains essentially unchanged from Fiscal Year 2011. Existing services, which support and protect children, adults and families with hearing loss, would be fully funded. During these difficult economic times, this is indeed good news for stakeholders and residents of New Jersey with hearing loss. Next year's budget will enable the division to move forward with the planned initiatives.

I would like to thank all of the stakeholders for attending the fall DHS budget hearings and submitting testimony on behalf of services for the Deaf and hard of hearing. Your voices were indeed heard!

DDHH looks forward to working as partners with our stakeholders as we continue efforts to improve the quality of life for New Jersey residents who are Deaf and hard of hearing.

**NOTE:** The NJ Division of the Deaf and Hard of Hearing will hold its quarterly advisory council meeting at the East Brunswick Public Library on Friday, April 29 from 9:30 AM – 3:00 PM. Sign language interpreters, realtime captioning, and assistive listening devices will be available. The public is invited to attend.



## REMINDER

The deadline for the  
**May 2011** issue is **April 1**.

The deadline for the  
**April 2011** issue was **March 1, 2011**.

**Send e-mail submissions to our new address:**  
[monthlycommunicator@dhs.state.nj.us](mailto:monthlycommunicator@dhs.state.nj.us).

Submissions should be "text only," in a standard word document (no pdf files). Photos, that accompany submissions are encouraged. For a style sheet, contact the editor.

### Newsletter Subscription

If you would like to subscribe to **Monthly Communicator**, send your request to the e-mail address above.

**Subscription is free of charge.**

## Monthly Communicator

State of New Jersey  
Department of Human Services  
Division of the Deaf and Hard of Hearing

**Director: David C. Alexander**  
**Editor: Alan Champion**

**PO Box 074**  
**Trenton, NJ 08625-0074**  
**609-984-7281 V/TTY**  
**800-792-8339 V/TTY**

[www.state.nj.us/human\\_services/ddhh](http://www.state.nj.us/human_services/ddhh)

*The Monthly Communicator is published by the New Jersey Department of Human Services Division of the Deaf and Hard of Hearing (DDHH), a state agency. DDHH provides information, referral, and advocacy to service recipients. Information or articles provided by others does not imply endorsement by DDHH or the State of New Jersey. There are currently 8,700 copies of the MC distributed monthly.*

**Deadline for submissions:**  
First of the month for the following month's edition.



## Rehabilitation Center Enters Into a Consent Judgment for Failure to Provide Interpreters to a Deaf Patient

Submitted by Clara Smit Esq.

In one of the first cases of its kind against a rehabilitation facility, Whiting Healthcare Center has agreed to payment of an undisclosed amount of monetary damages, attorneys' fees and injunctive relief in the form of a Consent Judgment. This judgment will provide widespread injunctive relief for all future deaf residents at their facility.

Marilyn Svenson filed a complaint in Federal Court against Whiting Healthcare Center for the failure to provide interpreters, and telecommunication devices when she was a resident at their facility. Whiting Healthcare Center (WHC) will now utilize certain protocol to ensure that reasonable accommodation will be provided to future deaf residents under the Americans with Disabilities Act, New Jersey Law Against Discrimination and Rehabilitation Act. These Consent Judgments are believed to be among the most comprehensive agreements with Rehabilitation Facilities and have been used at hospitals all over the country.

Marilyn sued WHC for failure to provide interpreters and telecommunication devices when she was a resident there for three lengthy admissions in 2008. Marilyn was transferred from Community Medical Center, after undergoing knee replacement surgery, in order to WHC to receive physical therapy services.

Throughout Marilyn's admission to WHC she was only provided with an interpreter on two occasions. Despite repeated, numerous requests in writing and verbally to the nursing staff, the social worker and the head director at WHC, Marilyn was not

provided with an interpreter on all other occasions, leaving her with little ability to fully communicate. Further, Marilyn was never provided with a TTY so she could contact her family.

WHC also attempted to use Marilyn's daughter to try and facilitate communication during her mother's residency despite the fact that family members are not qualified to interpret (due to the failure of the rehabilitation facility to provide a qualified interpreter). After experiencing the terror, frustration and emotional anguish of receiving treatment without understanding much of what went on around her; Marilyn decided to sue Whiting Healthcare so this would not happen to other deaf residents.

Marilyn was represented in the case by Clara R. Smit, an attorney of East Brunswick, New Jersey, who specializes in serving the deaf. Mr. Charles Svenson, Marilyn's husband, and Ms. Smit are extremely pleased and excited with the settlement and hope to see more major changes in rehabilitation facilities across the country, changes in their policies and practices as more and more of these cases are brought forth. Although the ADA and the Rehabilitation Act, specifically require that a rehabilitation center provide reasonable accommodation, such as interpreters to the deaf when necessary for effective communication, it is only in the past couple of years that deaf people have begun to feel empowered to start bringing these lawsuits. For additional information, please contact Clara R. Smit, Esquire at (732) 843-6600.

## 2011 Scholarship Award Program

The Hearing Loss Association of New Jersey (HLA-NJ) is pleased to announce a scholarship for high school seniors with a hearing loss, who are pursuing a college degree or vocational training. This scholarship is \$1000 and will be awarded to each of three students residing in New Jersey.

Recipients must have applied to a college or vocational education program, be between the ages of 17 and 20 and wear a hearing aid(s) or cochlear implants. Financial need is not a consideration. The scholarship is a one-time award.



This scholarship is made possible in part by funds raised by the Garden State Walk4Hearing event. The annual Walk4Hearing is a national project of the Hearing Loss Association of America to raise awareness about the causes and consequences of hearing loss, and to raise funds to provide information and support for people with hearing loss.

Applications are available online at:

[www.hearingloss-nj.org](http://www.hearingloss-nj.org)

or contact:

**Sandy Spekman,**

**Scholarship Chair, HLA-NJ**

**328 Meadowbrook Lane, South**

**Orange, NJ 07079**

**[Sandy.Spekman@hearingloss-nj.org](mailto:Sandy.Spekman@hearingloss-nj.org)**

Completed applications must be received by May 15, 2011

# Essex County Correctional Facility and Community Education Centers, Inc. enter into Consent Judgments for Failure to Provide Accommodations to a Deaf Inmate/Resident

Submitted by Clara Smit Esq.

**T**he Essex County Correctional Facility and Community Education Centers, Inc.



have entered into consent judgments to provide widespread injunctive relief for all deaf inmates and residents incarcerated in their facilities. A deaf inmate/resident filed a complaint in federal court for the failure to provide interpreters, closed captioning and telecommunication devices during his incarceration at Essex County Correctional Facility (ECCF) and during his residency at Community Education Centers, Inc. (CEC), Delaney Hall. These facilities will utilize certain protocol to ensure that reasonable accommodation will be provided to future deaf inmates and residents under the Americans with Disabilities Act, New Jersey Law Against Discrimination and Rehabilitation Act. The consent judgments are believed to be among the most comprehensive agreements with correctional facilities and residency programs in the country.

Gerard Cadet was arrested in 2007 and incarcerated for two months, after which the charges were dismissed and he was released. After experiencing the terror, frustration and emotional anguish of being incarcerated, and without understanding much of what went on during his incarceration and residency, Mr. Cadet decided to sue ECCF and CEC so this would not happen to other deaf inmates and residents.

Accommodations such as an interpreter were not provided to Mr. Cadet during his arrest and questioning; and then during his subsequent incarceration when the jail performed his intake, classification, medical evaluation and follow-up counseling at the residency program, as well as many other situations requiring effective communication. Mr. Cadet was represented in the case by Clara R. Smit, an East Brunswick attorney who specializes in serving the deaf.

After almost a year and a half of litigation, ECCF and CEC have agreed to settle the case with payment of an undisclosed amount of monetary damages, attorneys' fees and injunctive relief in the form of consent judgments. These consent judgments provide for signage to be posted throughout both entities to alert both inmates, residents and staff alike to the facilities' responsibility to provide interpreters, closed captioning, TDD's and/or videophones to deaf inmates and residents who require same for effective communication.

In addition, the consent judgments mandate that the entities follow several steps to ensure all possible efforts are made to obtain an interpreter whenever required throughout the day or night. Training and policy changes, to implement the consent judgments that will become part of ECCF and CEC administrative policy, are also required as part of the consent judgments. Ms. Smit and Mr. Cadet are

extremely pleased and excited with the consent judgments and hope to see major changes in the policies and practices in correctional facilities and residency programs across the country, as more and more of these cases are brought forth.

Although the ADA, NJLAD and the Rehabilitation Act specifically require that correctional facilities and residency programs provide reasonable accommodations, such as interpreters, to the deaf when necessary for effective communication, it is only over the past several years that deaf people have begun to feel empowered to start bringing these lawsuits. Communication difficulties in the past created extremely limited access to the legal community and the courts in general for deaf individuals.

Clara R. Smit, who is fluent in American Sign Language and whose parents were deaf, is the first attorney in New Jersey to bring these suits. Ms. Smit has settled several other cases against correctional facilities and residency programs and currently has another case against Edna Mahan Correctional Facility for Woman, University Correctional Healthcare, UMDNJ, Post House, Department of Corrections & the State of New Jersey for failure to provide interpreters to a deaf inmate/resident.

For further information, please contact Clara R. Smit, Esq. at (732) 843-6600.

## Hearing Loss Association of Ocean/Monmouth Counties

Meetings are held at 198 Prospect St., Lakewood, NJ 08701 and are open to everyone. They are a rewarding way to spend a few hours socializing with other hard of hearing individuals who share your problems and concerns.

As always, light refreshments will be served. Feel free to bring your favorite dessert to share.

The following dates are on our monthly schedule (*All dates and speakers are tentative and subject to change*):

### April 3 "Adjusting to Your Hearing Aid"

Speaker, Robert M. DiSogra, AuD/FAAA.

Director of Audiology, Associate of Freehold, NJ

### May 1 May is "Better Hearing Month" Veterans and Hearing Loss

The War Veteran sharing experiences in getting hearing help and adjusting to war-related hearing loss.

**Future 2011 Meetings: June 5; July 10, August, September 11, October 2, November 6, December 4.**

**Additional info: [oceanmonmouthhla@yahoo.com](mailto:oceanmonmouthhla@yahoo.com)**



# Music Research Study for Adult Cochlear Implant Users Ages 12 to 80 with Six-plus Months of C.I. Experience

**RESEARCH TITLE:** *The Kean University Cochlear Implant*

**PROGRAM:** *Meeting the Needs of New Jersey's Cochlear Implant Users through Music and Speech-Language Therapy*

## What is the purpose of this study?

The **Kean University Conservatory of Music** and the **School of Communication Disorders and Deafness**, are conducting a research study to examine cochlear implant users' perceptions of pitch patterns, timbre (sounds of musical instruments), and melody (various songs including but not limited to pop, classical, country/western). Findings from this study will aid in the development of a musical training program for those who would like to learn to appreciate music through their cochlear implant.

## What is involved?

The study includes four visits to Kean University which will include learning about the study, signing consent forms, and listening to various speech and musical sounds. The information will lead to the development of a training program designed to help C.I. users develop or re-kindle their relationship with music. Participation is completely voluntary and anyone who chooses to participate may withdraw from the study at any time.

## What is the pay?

Participants will receive a small stipend for coming to Kean University to participate in the study.

## Who can I contact for more information?

Interested participants may contact any of the following study investigators for more information.

■ **Dr. Carol Goodman, RIDCI/CT**  
908-265-1734 Txt  
[cgoodman@kean.edu](mailto:cgoodman@kean.edu)

■ **Dr. Alan Gertner**  
908-737-5808 v  
[agertner@kean.edu](mailto:agertner@kean.edu)

■ **Dr. Lyn Schraer-Joiner**  
908-737-4345 v  
[lschraer@kean.edu](mailto:lschraer@kean.edu)



**Kean University**  
1000 Morris Ave.  
Union, NJ 07083

Physical Address:  
215 North Avenue  
Hillside, NJ



## NJ State Library Talking Book and Braille Center: Children's 2011 ASL Story Hour

Christine Lam, the coordinator of the Deaf and Hard of Hearing Awareness Program at the New Jersey State Library Talking Book and Braille Center (TBBC), is pleased to announce that the library will host the Children's ASL Story Hour one Tuesday each month, at 10 AM.

The story time dates will be April 12, 2011 and May 17, 2011 at the NJ State Library Talking Book and Braille Center, 2300 Stuyvesant Avenue, Trenton, NJ 08618

For more information, contact Christine Lam, DHHAP coordinator, at VP (866) 326-6035 or [clam@njstatelib.org](mailto:clam@njstatelib.org).

American Sign Language Interpreters will be provided to voice or sign the story. The story hour will include a Power Point presentation of the book.

Assistive Listening Devices will also be available at the library.

The NJ State Library Talking Book and Braille Center is a bureau of the NJ State Library, an affiliate of Thomas Edison State College.





# Finding New Homes for "Old" Devices

By DDHH Field Representative Traci Burton

**M**any wish to donate old and/or no-longer-needed technology. Our constituency often asks where they can give devices such as amplified phones and hearing aids. DDHH is unable to accept such contributions; however, there are outlets of which to take advantage should you find yourself with a device you want to donate.

For devices such as telephones, alerting technology and other like equipment, gently used pieces can become part of the Back in Action program, <http://backinaction.drnj.org/>.

Back in Action is a "classified ads" feature that connects people with available assistive technology and is a project of the Assistive Technology Advocacy Center, a program of Disability Rights New Jersey (DRNJ). DRNJ is a nonprofit corporation created under the laws of New Jersey.

This is a user-driven database with entry, edit, delete and search capabilities. Back in Action is primarily for residents of New Jersey, although entries from neighboring states are accepted. The program is designed to facilitate equipment exchange between individuals and is not for the use of vendors or distributors. DRNJ does not profit from the sale of listed devices.

The Hear Now program under the Starkey Foundation collects hearing aids for recycling purposes. Any make or model, regardless of age, can be donated to the hearing aid recycling program. All donations are tax deductible and a letter of acknowledgement will be sent to all identified donors. For more information, please visit [www.starkeyhearingfoundation.org/give-goods-and-services.php](http://www.starkeyhearingfoundation.org/give-goods-and-services.php) If you wish to donate a salvaged hearing aid, please securely package the donation and mail to:



**Salvage Hearing Aid Donations**  
**Hear Now**  
6700 Washington Avenue South  
Eden Prairie, MN 55344  
1-866-354-3254

Some wish to support library programs and there are eighteen libraries in New Jersey that carry and loan devices for the deaf and hard of hearing. Go to [http://njsltbbc.org/deaf\\_and\\_hard\\_of\\_hearing\\_awareness\\_program](http://njsltbbc.org/deaf_and_hard_of_hearing_awareness_program) for a list of the participating libraries. If you wish to make a donation to a local library, call them directly to learn their procedure for accepting such gifts.

There are several reasons why we find ourselves with equipment for which we no longer have a use. If you are able to find a new home for these pieces then the technology will continue to bring the same sense of independence that it brought its original owner.

*Traci Burton, Field Representative can be reached at 609-984-7281 or [traci.burton@dhs.state.nj.us](mailto:traci.burton@dhs.state.nj.us).*



**Celebrating the Year of the Family Caregiver**  
**Seventh Annual**  
**Thursday, May 12**  
**9 AM to 3 PM**

**Robert Wood Johnson Hamilton Center for Health and Wellness**  
**Mercerville, NJ**

Join us for a day of outstanding presentations, exhibits, health screenings, renewal services and much more.

**Registration begins April 1.**

Call (800)372-6510 or Register online at [www.fscnj.org](http://www.fscnj.org)

Presented by:

**Family Support Center of NJ**

**NJ Department of Health and Senior Services**

**Office of Nutrition and Fitness**

**Office of Women's Health**

**Division of Aging and Community Services**

**American Heart Association**

**American Stroke Association**

*Communication access will be provided if requested within two weeks of the event.*



## Hearing Loss and the Workplace

Finding a job and keeping it is hard in today's economy. For someone with hearing loss, the problem can be even more nerve-wracking. This month, I'd like to offer some tips.

■ **Don't pretend.** If you don't understand what someone says, ask them to repeat the part you missed and to speak more slowly. For me, this is still hard. Much easier just to smile, nod and guess – a strategy that can lead to serious mistakes. Even worse, people probably won't realize that the problem is hearing. It's known as "the invisible disability" for good reasons. If you keep misunderstanding, they are likely to decide that you don't care, aren't motivated, or, if you're over 50, too old to do the job. No need for long explanations. Just a simple phrase, such as "My hearing isn't great. Would you mind repeating that more slowly." You may be surprised how much people want to help...as long as they know how.

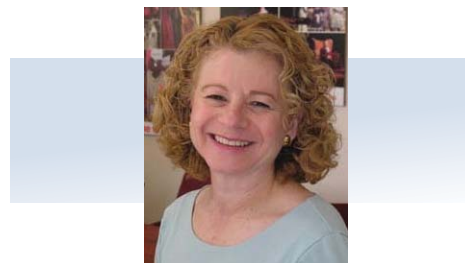
■ **Make technology work for you.** Have regular check-ups with your audiologist. If you don't wear hearing aids, maybe it's time. If you do, they may need adjustment, or an upgrade. Or a cochlear implant might make a big difference.

■ **Learn about Assistive Listening Devices.** FM transmitter-receivers, or loop technology that can help in meetings. To help with the telephone, you can get telephone amplifiers, or use CapTel technology that gives you real-time captions. Texting or BlackBerry devices not only work for messaging, but also for checking with a colleague across a crowded meeting room to verify what was just said.

■ **If appropriate, discuss your hearing with your employer.** If and when it feels right to you, you might sit down with your boss to discuss your hearing and what would

help you do even better work. The changes might range from telephones suited to your needs to a possible change of assignment.

■ **Reach out for help and support.** There are many sources of advice and counseling. You might start with the Hearing Loss Association of New Jersey. Contact us at [info@hearingloss-nj.org](mailto:info@hearingloss-nj.org). Other good sources are the Hearing Loss Association of America, at [www.hearingloss.org](http://www.hearingloss.org), the Center for Hearing and Communication, at [www.chchearing.org](http://www.chchearing.org) and the New Jersey Division of the Deaf and the Hard of Hearing, at [www.state.nj.us/humanservices/ddhh](http://www.state.nj.us/humanservices/ddhh). Their services include demonstration centers for Assistive Listening Devices. The State Division of Vocational Rehabilitation might also help. Contact Nancy Yarosh at [Nancy.Yarosh@dol.state.nj.us](mailto:Nancy.Yarosh@dol.state.nj.us). If you need information about your rights under the Americans with Disabilities Act or the state Law Against Discrimination, reach out to the New Jersey Office on Civil Rights, at [www.state.nj.us/lps/dcr/news/images073002/090902.html](http://www.state.nj.us/lps/dcr/news/images073002/090902.html).



**Reminder** - new book on hearing loss – HLA-NJ President Romoff's new book is now available. Titled *Listening Closely: A Journey to Bilateral Hearing*, it is available from Charlesbridge Publishing ([www.charlesbridge.com](http://www.charlesbridge.com)), [www.amazon.com](http://www.amazon.com) and bookstores. Her previous

work, *Hear Again—Back to Life with a Cochlear Implant* is available from **Amazon.com**. Make sure your friends with hearing loss know about these important resources.

**Get involved** - A great way to get involved with the Hearing Loss of New Jersey is by attending chapter meetings. We have three chapters, serving Bergen, Middlesex and Ocean/Monmouth counties. Information is available from [info@hearingloss-nj.org](mailto:info@hearingloss-nj.org), or at [www.hearingloss.org](http://www.hearingloss.org)

## Career Options Day



*Career Options Day* will be held on April 14, 2011 at the JFK Conference and Fitness Center, 70 James Street, Edison, New Jersey from 9:00 AM – 12 PM.

It is an opportunity to meet with prospective employers and receive career information. If you have a need for a sign language interpreter please contact us so that we have available a sufficient number of sign language interpreters to assist those in need of this service.

If you have any questions concerning *Career Options Day* please contact Rose Anne Anthony, Department Secretary, JFK-Johnson Rehabilitation Institute at (732) 321-7723 Voice.

# Six Flags GO BIG! GO SIX FLAGS!



**27th Annual  
Deaf & Hard of Hearing  
Awareness Day  
Saturday,  
June 11, 2011**



*To purchase tickets visit one of our partnering organizations listed in this issue or go to [sixflags.com/greatadventure](http://sixflags.com/greatadventure) and use the promo code: **NJDAD***

*For more information contact: [gatickets@aol.com](mailto:gatickets@aol.com)*

*ASL Interpreters located throughout the park on June 11*

*A portion of the proceeds supports organizations serving people with hearing loss*

*Admission tickets valid any regular operating day through October 16, 2011*

## **Best Price Available!**

<u>Ticket Type</u>	<u>Price</u>
Theme Park & Wild Safari Admission	\$ 30.00
Hurricane Harbor Water Park Admission	\$ 20.00
Theme & Safari Season Pass	\$ 85.00
Theme, Hurricane Harbor & Safari Season Pass	\$105.00
Parking Voucher	\$ 12.00

## **Theme/Safari Tickets Only**

**\$30.00** each  
*Main Gate Price of \$71.98*

## **Hurricane Harbor Tickets Only**

**\$20.00** each  
*Main Gate Price of \$39.99*



## Contact These Ticket Sellers for DDHH Deaf and Hard of Hearing Awareness Day Six Flags Great Adventure - Saturday, June 11, 2011

*Bruce Street School for the Deaf*  
333 Clinton Place  
Newark, NJ 07112  
Day: 973-705-3952  
MJMansbach@aol.com

*Deaf Golf Association, Inc.*  
1108 Gates Court  
Morris Plains, NJ 07950  
VP: 862-242-5663  
RHSARK@aol.com

*New Jersey Association of the Deaf*  
PO Box 354  
Milltown, NJ 08850  
Geocha7383@aol.com

*New Jersey Association of the Deaf-Blind*  
24K Worlds Fair Drive  
Somerset, NJ 08873  
TTY/V: 732-805-1912  
arosen@njadb.org

*New Jersey Deaf Awareness Week, Inc.*  
1018 Buccaneer Lane  
Manahawkin, NJ 08050-2070  
VP: 609-489-7605  
NJDAWGA@aol.com

*New Jersey Deaf Sports, Inc.*  
26 N. Shore Boulevard  
Helmetta, NJ 08828-1233  
732-641-3420 (H)  
609-997-3441 (W)  
NJDeafSportsInc@gmail.com

*New Jersey Rainbow Alliance of the Deaf*  
517 Farley Avenue  
Scotch Plains, NJ 07076  
Plt311@gmail.com  
609-672-8840 (text only)

*New Jersey Registry Interpreters for the Deaf*  
83 Hawkins Road  
Tabernacle, NJ 08088  
V: 609-980-8037  
Meg.ellis@comcast.net

*NorthEast Deaf Golf Association*  
264 Swinnerton Street  
Staten Island, NY 10307-1641  
347-308-7669  
Sourpeas@aol.com

*Northwest Jersey Association of the Deaf, Inc.*  
52 Heritage Court  
Towaco, NJ 07082  
W: 862-242-5662  
dvvn40@yahoo.com

*St. Matthew's Lutheran Church for the Deaf*  
2222 Vauxhall Road  
Union, NJ 07083  
V: 908-686-3965  
TTY (W): 908-851-2004  
Gracelu4u@yahoo.com

*Bridge to Employment, A Division of Alternatives, Inc.*  
600 First Avenue  
Raritan, NJ 08869  
V: 908-685-1444 ext. 284  
VP: 866-971-9542  
abetso@alternativesinc.org



**All tickets  
purchased can be  
used throughout  
2011.**

# Interpreter Ethics Workshop

By Cynthia Piana

*On February 19 - 21, 2011, the NJ Registry of Interpreters for the Deaf (NJRID) hosted a three day workshop: "From a Framework of Integrity: Exploring Ethics in Community" at the Centrastate Healthcare System Conference Center in Freehold, NJ. The presenter, Lynette Reep, is an interpreter/educator from Vermont, who has led interactive workshops on ethics and empowerment throughout the country. She also serves on the RID ethics committee.*

The workshop was designed to meet the needs of both community and educational interpreters with the first day specifically for freelance interpreters and the second day for interpreters working in the K-12 educational setting. On the third day, both groups joined together to share and build upon lessons and information from the previous days.

On Saturday, February 19, community interpreters met for a full day of contrasting and comparing ethical codes from different professions and countries with the current RID/NAD Code of Professional Conduct. Dilemmas were examined in both small and large group exercises. Situational role plays highlighted the difficult decisions interpreters sometimes have to make. The scenarios lead to lively group discussions, and allowed participants to analyze strategies to aid in problem solving as well as ethical concerns that need to be considered when dealing with the presented dilemmas.



*Lynette Reep presents to a group of educational and community interpreters.*

On Sunday, February 20, educational interpreters were exposed to similar background theories and group exercises. The focus was on working within a K-12 school environment and the unique daily challenges that educational interpreters face as a member of the educational team and as a school employee.

On Monday, the final day of the training, both groups met together to examine the ways in which working in the two environments are similar, and why at times they faced different concerns. In an atmosphere of mutual respect, interpreters were challenged to assess their own values and skills. They were given a set of factors to consider before accepting an assignment and through role playing discovered ways of resolving problems and challenges that can arise in some interpreting situations.

One situation that was raised involved an interpreter refusing to interpret the Pledge of Allegiance on the basis of religious beliefs. Suggestions for possible strategies to handle this dilemma were discussed including making job "accommodations" for this interpreter if there were other interpreters who could cover this part of the assignment. Other possible conflicts, such as history class where the pledge might be studied were also raised. These situations could present a problem for an interpreter with religious beliefs that prevented

him/her from not only being neutral but interpreting in the spirit that the message was intended. Revisiting the RID NAD Code of Professional Conduct helped to refocus the group and although there were some differences of opinion most agreed that in this scenario, this interpreter was not the best match for this school environment.

At the conclusion of the workshop, it was clear that maintaining integrity in an interpreter's professional and personal ethics is something that needs to be continuously examined, evaluated and in the forefront of an interpreters mind throughout their career.

## *Silent Hands*



*Some talk by mouth, I talk by hands  
Never once hearing your continuous demands*

*When woken, no alarm clock sounds  
Only vibrations are felt all around*

*Once you're aware, you mock and jeer  
Thinking its ok just because I can't hear*

*But I feel your scoffs and I feel your taunts  
Always in my nightmares, you never cease to haunt*

*Never once do you attempt to understand my ways  
Of my abilities, one day you'll be amazed*

*I understand more than you know  
I feel more than I'll ever show*

*Days come and go, with your unchanging style  
Making me wish I was worthwhile  
Never once did you share a smile  
Did you think I was a useless scrap pile?*

*You don't get it; your words are like bombs  
I have a voice; it just rests in my palms*

*My reverence toward you has begun to decline  
I respect your voice, can you respect mine?*

*Written By:*

**Shaili Patel and Myisha A. Bryan**  
**Passaic County Technical Institute**  
**ASL High School Students**



# A Review - *Listening Closely: A Journey to Bilateral Hearing* by Arlene Romoff

by Karin N. Mango, MA, MLS - advocates for better communication (a.b.c.)

This is a unique book that raises both hopes and spirits. Arlene Romoff started to lose her hearing in her late teens, eventually becoming deaf. Powerful hearing aids no longer worked and she opted for a cochlear implant. Her first book, *HEAR AGAIN*, was the story of her first "CI." Now, she has chronicled her odyssey through total silence after the failure of the first implant, through re-implantation and finally a second, bilateral CI.

This is an odyssey of what Arlene terms "biblical proportions." She describes clearly and in detail the technical steps: how a cochlear implant works, surgery, programming, mapping, and the recipient's efforts to successfully use two bionic ears. Above all, Arlene tells us what it means to hear again with two ears. She writes these "chronicles" in a personal style as though talking to a friend. She is courageous and honest, unafraid to expose tears of despair or joy, her reactions to difficulties encountered and sheer delight in her success. She has certainly worked hard enough,



practicing, and using every opportunity to improve her listening skills.

Generously, she gives thanks to those who have helped her, and her expressed love and gratitude for her husband and family are unmistakable. She has a delightful sense of humor, lightening-up what might have been a purely technical and educational experience. Nature and its healing powers, her religion, and music, including a memorable carillon concert, sustain her. Arlene's joy is palpable: "I was just hearing...really hearing without effort" and "no longer an observer but a participant." She, and her brain, almost a separate character, learn the importance of directionality - recognizing the source of sounds, the "basis of safety and socialization" - and that normal-hearing people hear in "surround sound." "People treat you differently when they know you can hear them." She feels like a normal person.

While many, perhaps most implantees are not as successful or fortunate as Arlene is, *Listening Closely* is an inspiring journey for all.

---

## UCC SIGN Club Hosts 12th Annual Black Deaf Forum

Submitted by Eileen Forestal

Our 12th annual Black Deaf Forum kicked off February 19, a Saturday afternoon, at Union County College – Cranford campus, with a phenomenal speaker, Kristi Merriweather. She spoke on Deaf and black identity, with approximately 75 people in attendance.

The Union County College (UCC) SIGN club planned the event. The SIGN Club is directed by the students, and advisors and faculty, Eileen Forestal and Cynthia L. Williams of the ASL-English Education Programs and funded by the Student Government Association at UCC. The SIGN Club board members are: Jeanette Lebron, president, Shaneice Williams, vice president, Jackie Chersevani, secretary, Danielle Lieberman, treasurer, and Kim-Marie Pierson, coordinator of class representatives.

Kristi Merriweather is a Deaf Georgian native with approximately 15 years of awareness-raising involvement and program building in the minority Deaf community. Among her achievements is establishing a national Black Deaf summer camp that is still in existence today. A graduate of Spelman College (in which she was one of the Glamour Magazine's Top Ten College Women), Howard University, and Georgia State University with degrees in psychology (with master's thesis on Deaf and black identity) and Deaf education, she currently works in the field of Deaf education.

Ms. Merriweather is also a poet whose works have been published in *Deaf American Poetry: An Anthology*. She serves as a co-vice president of DeaFusion, a multicultural group who aims to raise awareness and sensitivity about race issues in the Deaf community. A member of Delta Sigma Theta Sorority, Ms. Merriweather enjoys watching and partaking



*Black Deaf Forum Special Guest Kristi Merriweather poses with the UCC S.I.G.N. Club Board members along with Professor Eileen Forestal and Professor Cindy Williams.*

in various forms of visual and performance art, writing, basketball, and traveling. Her current initiatives include a scrapbook project, and attending the World Federation of the Deaf international conference in South Africa.

Her February presentation demonstrated her knowledge on Deaf and black identity, and her personal experiences. The presentation was followed by a question and answer period. Many came away impressed with Kristi, her dynamic persona, and warmth. A reception planned by the SIGN club and students was held afterwards.

Already, we are looking forward to, and preparing for, our next annual event, the ASL Festival, on April 30. For information, contact [uccsignclub@gmail.com](mailto:uccsignclub@gmail.com).

# Communicator Signboard

## Did You Know You Can Access Video Relay Services From Your Wireless Device?

Come learn about the newest technology available using Mobile Video Relay, Video Relay Service and Internet Relay Service.

**Friday, April 8  
11AM -12 PM**

**Bridges To Employment's  
Career Development  
Center  
600 First Avenue  
Raritan, NJ 08869**

Please RSVP to  
Abetso@alternativesinc.org  
or (908) 685-1444 Voice  
extension 295,  
(866) 971-9542 VP

**Space is limited!**

*This FREE presentation is being provided by Sprint Relay.*



**The Association of Late-Deafened Adults –  
Garden State**

## Annual Spring Workshop and Birthday Celebration



**Saturday, April 16, 2011  
11:00 AM to 3:00 PM**

**East Brunswick Public Library  
2 Jean Walling Civic Center  
East Brunswick, NJ 08816**

ALDA-Garden State is turning **Sweet 16!** Join us for our birthday celebration and featured guest speaker presentation, *“Handling Law Enforcement Encounters When You Have Hearing Loss.”*

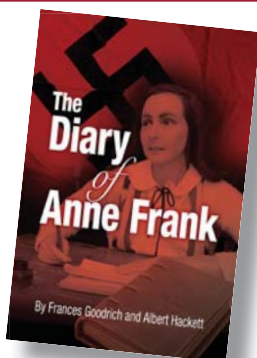
✓ **Free Admission** ✓ **Public invited** ✓ **Lunch will be served**

Visit us at [www.ALDA-GS.org](http://www.ALDA-GS.org)

*CART and Sign Language Interpreting Services provided courtesy of NJDDHH.*

The Ritz Theatre Company  
presents  
ASL Shadow Interpreted  
Performance

## “The Diary of Anne Frank”



Don't miss your chance to be delighted and enchanted by Goodrich and Hackett's stirring stage adaptation of *The Diary of a Young Girl*, the story of Anne Frank and her beloved family as they hide from the Nazis.

Student matinee and public performance April 28 at 10 AM  
For student groups of 20 or more - tickets are \$12  
General public tickets are \$25 - \$30



915 WHITE HORSE PIKE • HADDON TOWNSHIP, NJ 08107

Contact Susan Dewey for tickets and information:

[Sooze@ritztheatreco.org](mailto:Sooze@ritztheatreco.org)  
[www.ritztheatreco.org](http://www.ritztheatreco.org)

## ASL FESTIVAL

**April 30, 2011  
Doors open at 10:00 AM**

Our yearly ASL festival will be a fun ALL-DAY event filled with activities for children and adults. Our festival consists of a variety of vendors and performances by well-known entertainers in the Deaf Community. Come and enjoy the day!

**Union County College  
Cranford Campus  
1033 Springfield Avenue  
Cranford, NJ 07016**

For more information, please contact  
**Jeanette Lebron** or **Shaneice Williams**  
at:

[UCCSignClub@gmail.com](mailto:UCCSignClub@gmail.com)  
for general questions

[UCCASLfestival@gmail.com](mailto:UCCASLfestival@gmail.com)  
for vendor requests



# Communicator Signboard



*Bridges to Employment*  
Invites you to the 2nd annual

## COMMUNICATION EXPO

*Building bridges for people with hearing loss*

May 7, 2011

10 AM - 4 PM

Raritan Valley Community College

Conference Center

118 Lamington Road

Branchburg, NJ 08876

(Parking in Lots 1 and 2)

### FREE ADMISSION

Network, connect, and learn about resources in assistive technology, employment and much more!

Sponsorship opportunities are available.

For more information:

V 908-685-1444 ext. 284 / VP 866-971-9542

Email at [abetso@alternativesinc.org](mailto:abetso@alternativesinc.org)

[www.bridgestoemployment.com](http://www.bridgestoemployment.com)

[www.alternativesinc.org](http://www.alternativesinc.org)

*\*Sign Language Interpreters and Assistive Listening Devices will be provided\**

### Alumni Association

*proudly hosts*

**88th Annual Alumni Day** and

**Two Special Events**

**5th Anniversary**

**NJSD/MKSD Museum** and

**Hall of Fame Ceremony**

May 21, 2011

9:00 AM to 5:00 PM

(Free Admission)

Gates Open - 9:00 AM

Museum Opens - 9:00 AM

General Meeting - 1:00 AM

Hall of Fame & 5th Anniversary NJSD/MKSD Museum

Ceremonies - 1:30 PM

*(Refreshments will be provided at 4:00 PM)*

NJSD/MKSD, 310 Sullivan Way, West Trenton, NJ 08628

For more information, contact: [NJDSMuseum2011@gmail.com](mailto:NJDSMuseum2011@gmail.com)

Co-Chairpersons: Heidi Schumacher and Denis Munn

Millburn School for the Deaf

## 40 Year and More Celebration Millburn Fundraiser Picnic

Pre-Memorial Day  
Saturday, May 28

Roosevelt Park Parsonage Road,  
Edison NJ 08871(Next to Menlo Park Mall)

Meet Group (Grove 1B)

Admission: \$7 for Adult

\$3 for Children 3 - 12

*(bring a dessert and side dish)*

**\$10 if don't bring food at the door.**

Hamburger/hotdogs, potato salad, pasta salad, mari salad, tossed salad and fruit salad will be provided. (Buy your own alcoholic beverages and your own drinks, water, and soda)

There will be games, raffles, door prizes, and 50/50 raffles.

R.S.V.P to Millburn Committee.

Info: [Millburnschool@yahoo.com](mailto:Millburnschool@yahoo.com) or

[www.co.middlesex.nj.us/parksrecreation/roosevelt.asp](http://www.co.middlesex.nj.us/parksrecreation/roosevelt.asp)

### New Jersey Association of the Deaf, Inc.

#### 22nd Biennial State Conference

Burlington County College

Mount Laurel Campus - Laurel Hall

500 College Circle (off Route 38)

Mount Laurel, NJ

Saturday, June 4

9 AM to 5 PM

**Conference theme: *New Paths for Deaf Americans***  
**Registration includes:** Opening ceremony, exhibits, workshops, NJAD business meeting, luncheon/awards and a game "Minute to Win It."

#### Early bird combo

\$25 member \$30 non-member by April 15

#### Regular combo

\$30 member \$35 non-member by May 25

Evening event will be announced in May.

You can download the registration form at

[www.njadeaf.org](http://www.njadeaf.org)

# Religious Access



## New York's Tifereth Israel TOWN & VILLAGE (T&V) Synagogue (www.tandv.org)

**typically hosts sign-language interpreters at least once per month,  
and we hope you can join us.**

We're thrilled to welcome the Jewish Deaf Community to different kinds of services and events over the course of the year, all of which are professionally interpreted, such as:

- Shabbat morning services with full readings from the Torah and Haftorah (Prophets), and held on Saturdays from 10:00 AM - 12:30 PM, followed by a Kiddush (refreshments and social hour) where all are welcome to participate.
- Services for Kol Nidre, Purim Night and Yom HaShoah!
- Aufrufs (special ceremonies that honor couples who are soon to wed), Bar/Bat Mitzvahs, and lectures from distinguished guest speakers!
- Special opportunities during the year for Deaf congregants to pose whatever questions they like to our clergy, in sessions that we call, "Ask the Rabbi"!

We draw Deaf, hard of hearing and Deaf-blind congregants from all over the greater New York area, and present some of the best interpreters around whose work is proudly financed by a diverse donor base, underwritten at times by a single donor in part or in full (such as in honor of a special occasion), and supported by UJA-Federation of New York's Jewish Community Deaf Interpreter Fund.

Wondering when our next ASL-interpreted service or event will be? Want to co-sponsor one of them? Want to join our e-mail list to be the first to learn what's next? For all of this and more, please contact Bram Weiser at [Bramweiser@usa.net](mailto:Bramweiser@usa.net) or (212) 677-0368 Voice.

ASL interpreters are also available at T&V when requests are made in advance. Please contact Bram for more information about that, too.

## Holy Week Masses for the Diocese of Metuchen All masses will be sign/interpreted.

### April 17 - Palm Sunday Mass

Noon  
Immaculate Conception Church,  
18 South Street, Spotswood, NJ  
08884

### April 22 - Good Friday Service

3:00 PM  
Immaculate Conception Church,  
18 South Street, Spotswood, NJ  
08884

### April 18 - Chrism Mass

7:30 PM  
Cathedral of Saint Francis of Assisi,  
32 Elm Street, Metuchen, NJ 08840

### April 23 - Easter Vigil Mass

8:00 PM  
Immaculate Conception Church,  
18 South Street, Spotswood, NJ  
08884

### April 21 - Holy Thursday Mass

8:00 PM  
**Exposition of Blessed Sacrament**  
9:00 PM  
Immaculate Conception Church,  
18 South Street, Spotswood, NJ  
08884

### April 24 - Easter Sunday Mass -

Noon  
Immaculate Conception Church,  
18 South Street, Spotswood, NJ  
08884

For more information, contact Tevis Thompson, Program Coordinator for Deaf Apostolate; [deaf1@comcast.net](mailto:deaf1@comcast.net) or 302-529-7088 V/FAX

## 3rd Mini Spring Deaf Expo/ Deaf Community



**At Lehman United Methodist Church in Hatboro, PA on 300 S. York Road (Route 263), we are hosting a 3rd Spring Deaf Expo/Deaf Community on April 2, 2011 from 10 AM to 4 PM.**

**We have various vendor tables with information. The money will go to the youth group. They will be selling products, various crafts, and etc.**

**The church youth group will be also sell food, drinks and baked goods.**

**Info: Barbara Simpson at [twin12mom@gmail.com](mailto:twin12mom@gmail.com) or [Barbara.Simpson@dla.mil](mailto:Barbara.Simpson@dla.mil).**

**Do not park in Commerce Bank parking lot!  
You can park across street from our church.**

**We welcome deaf, hard of hearing, hearing/ASL students, intern interpreters, interpreters. There is no charge for admission.**

# Religious Access



**THE PASSION PLAY**, America's Longest Running Play, is the dramatic story of Jesus Christ's last days on earth. It is the most modernized version of "The Passion Play" performed in Germany since 1634, complete with a large cast of characters, breathtaking imagery and memorable songs.

It will be held on **Saturday, April 16, 2011, 2:00 PM at the Park Performing Arts Center, 560 - 32nd Street, Union City**, and be ASL-Interpreted by Kymme Van Cleef & Dana Fuller (courtesy of ASL Interpreter Referral Services).

"Deaf seats" are specially priced at \$21. Please contact Claudia at [claudia@parkpac.org](mailto:claudia@parkpac.org) to reserve your seats or call her on relay (voice) 201-865-6980, ext. 12 for more info.

## Medjugorje Pilgrimage Special Deaf Group

**Oct 5 - 14, 2011**

**Philadelphia or Detroit Departure  
\$2553 (Price subject to change)  
Price shown is for Philadelphia or Detroit departure.  
Lunches and tips are not included.**

Travel to Medjugorje on this pilgrimage designed especially for the deaf and hard of hearing. Our spiritual director will be Fr. Michael Depcik, a deaf priest who is fluent in American Sign Language. Also joining us as an interpreter will be Sr. Kathleen Schipani. For those of you who have never been to Medjugorje, you will experience one of the most spiritual, and peaceful places on earth. One of the best descriptions of Medjugorje we have ever heard is: "Medjugorje is a place where Heaven touches the earth." We have excellent accommodations in Medjugorje and will be providing an outstanding itinerary.

**Info: Sister Kathleen Schipani; [srschipa@adphila.org](mailto:srschipa@adphila.org);  
215-587-3913 V/TTY [www.medjugorje.org](http://www.medjugorje.org)**

## Religious Services Interpreted for the Deaf at Grace Lutheran Church and St Matthew's Church for the Deaf 2222 Vauxhall Road, Union, NJ

### *Easter Season Schedule:*

- **Wednesday Night Lenten** services at 7:30: April 6 and 13. This is preceded by a soup/supper at 6:00PM. Coffee and tea are usually served after service. Donations accepted to offset the cost of the soup/supper. This is usually "pot luck."
- **Maundy Thursday**, April 21: 7:30 PM
- **Good Friday**, April 22: 7:30 PM
- **Easter Egg Hunt**, April 23: 1:00 PM (open for all children, hearing or Deaf or who have Deaf parents)
- **Palm Sunday**, April 17: 10:30 AM
- **Easter Sunday**, April 24: 10:30 AM

We also have our regular worship services interpreted for the Deaf at 10:30 AM every Sunday, with Communion service on the first and third Sunday's of the month.

You may contact us at 908-686-3965 Voice, 908-851-2004 TTY, or [gracelu4u@yahoo.com](mailto:gracelu4u@yahoo.com).  
Visit us at [www.gracelutherannj.org](http://www.gracelutherannj.org) for upcoming events such as our next interpreted dinner theatre!



NJ DEPARTMENT OF HUMAN SERVICES  
DIVISION OF THE DEAF AND HARD OF HEARING  
PO BOX 074  
TRENTON, NJ 08625-0074

PRESORTED  
FIRST-CLASS MAIL  
U.S. POSTAGE  
PAID  
TRENTON, NJ  
PERMIT No. 21

ADDRESS SERVICE REQUESTED

## Dated Material Please Rush

# Calendar of Events 2011

### ■ Thursday, April 21

A Forum for Interpreters in Theatre  
and the Theatres Which Employ Them  
4:00 PM - 9:00 PM  
The Shakespeare Theatre of New Jersey  
36 Madison Avenue, Madison, NJ  
FREE; pre-registration is required  
Contact: Robert Carr [rcarr@njtheatrealliance.org](mailto:rcarr@njtheatrealliance.org)

### ■ May 20 - 22

Jersey Shore Will Graham Celebration  
(Billy Graham's grandson)  
Interpreters available for all events  
Great Auditorium in Ocean Grove, NJ

### ■ Saturday, June 4

NJ Association of the Deaf, Inc.  
22nd Biennial State Conference  
Burlington County College  
Mount Laurel Campus - Laurel Hall  
500 College Circle  
Mount Laurel NJ

### ■ Saturday, June 11

Deaf and Hard of Hearing Awareness Day  
Six Flags Great Adventure  
Jackson, NJ  
For ticket information, contact Lauren at  
[GATickets@aol.com](mailto:GATickets@aol.com)

### ■ Saturday, September 18

NJDAW  
DeafFest  
Middlesex County Fairgrounds  
East Brunswick, NJ  
[www.njdaw.org](http://www.njdaw.org)

### ■ October 15 - 16

The Real ASL Weekend  
NJ Registry of Interpreters for the Deaf and  
NJ Association of the Deaf  
Crowne Plaza Hotel  
360 Forsgate Drive  
Monroe Twp. NJ

Regular Office Hours: Monday - Friday 8:30 AM - 4:30 PM

DDHH Office - Days Closed:

■ Good Friday - Friday, April 22