

New Jersey

Outdoors

VOL. 12, NO. 5

DIVISION OF FISH AND GAME

NOVEMBER, 1961

FREE PUBLIC LIBRARY
TRENTON-NEW JERSEY

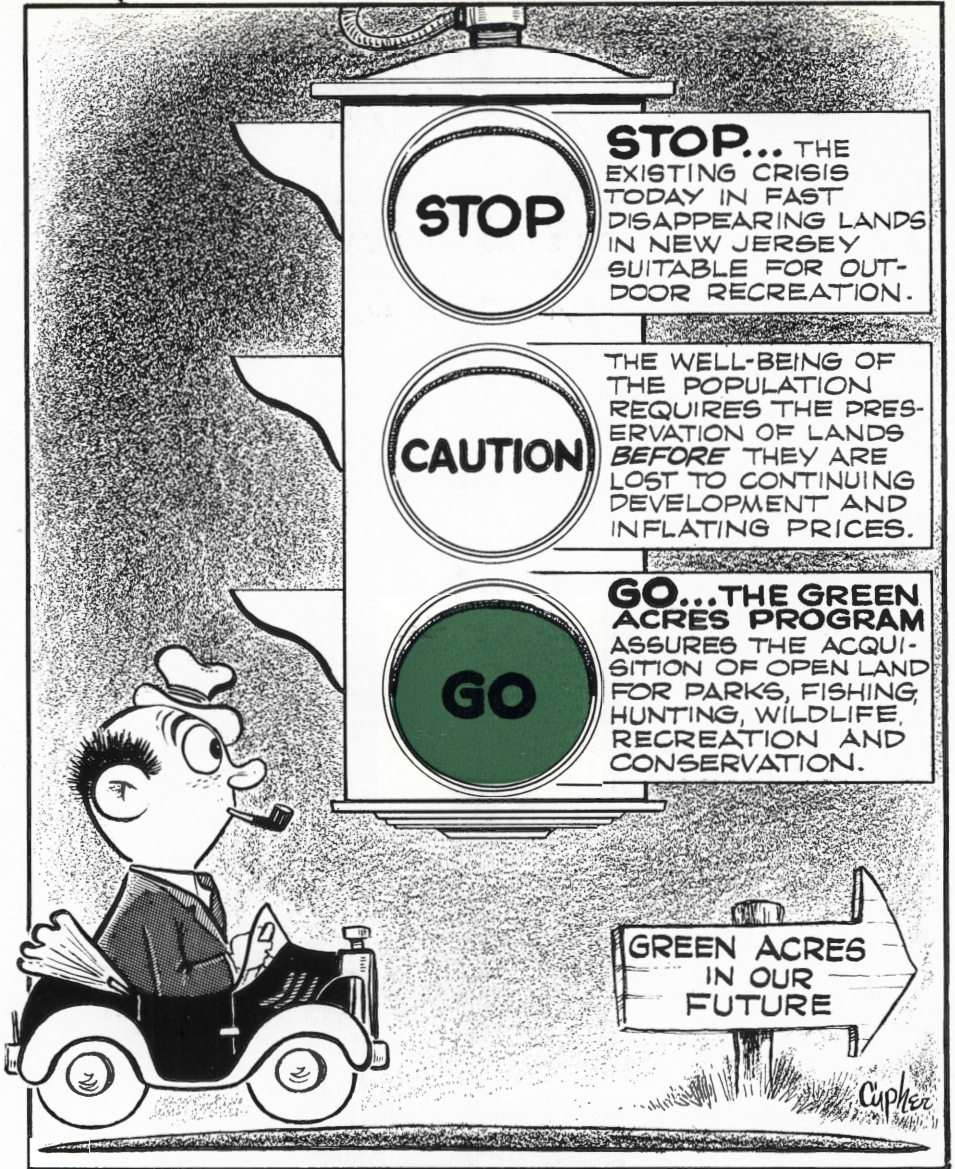
N. J. P. B.

REFERENCE
DEPARTMENT



Jersey Joe

go green acres



*Every Resident of New Jersey
Interested in the Out-of-doors
should support the*

GREEN ACRES BOND ISSUE

HELP

green acres

to serve you

ARE THERE WAYS that you can help Green Acres, and help to serve our outdoor life?

You believe in its purpose of securing more open land for public needs. You feel that you and everyone will benefit from the land saved. You are planning to support the Green Acres Referendum November 7. Now, while there is time left, ask yourself: Can I do more to secure public approval?

Yes, you can help make sure that your friends and associates understand what is at stake for themselves and others. You can stir them to support the Green Acres Bond Issue.

Our own experience can remind each of us of the need and value of Green Acres. We have each observed changes affecting our outdoor activities. Have the outdoor spots we most prefer seemed more crowded, more threadbare and less productive from heavier use, reduced in size even disappearing with more posting? Has leap-frogging development bordered them with the housing we thought we were leaving behind?

Few have not experienced these consequences of the needs of New Jersey's growing number of people. Without a Green Acres plan, there would be no overall means of balancing these needs. At the pace of dwindling open space, only action now will reserve land needed for conservation and outdoor recreation.

What land do we still have left? Fortunately, we still have enough to be selective among open and suitable space. We can still pass through miles of wooded countryside and enjoy uncluttered scenery. We can still pause on heights for a vista of forests and valleys extending to the distance. We can still probe an expanse of wetlands and marshes, of bays and inlets.

What price should we pay for these natural resources? Can we really put a price on the value to the fisherman of the noisy surf, and windswept sands and dunes; to the angler for the wooded lights and shadow, and rushing water of a bouldered stream; or to the hunter in the contour of slope and meadow, and the scents and colors of the fall woods; or to the hiker in the panorama unfolding along his path of plants and wildlife, and above the trees of cloud and sky?

We have a choice. These assets of outdoor life will not survive unprotected against other conditions of change. Fresh waters are too easily spoiled, woods leveled and streams ditched, to endure unaided.

Green Acres is this aid, and you can help bring it about. Encourage others to consider these changes, to appraise our outdoor assets, to think of their wishes in the future. If they do, the issue to be considered November 7—New Jersey's future Green Acres—will not be in doubt! #

New Jersey State Library

VENISON

ONE DEER

For Every 100 Subscriptions

New Jersey Outdoors

Will Present a Deer

FOR EVERY 100 SUBSCRIPTIONS to the Magazine
Submitted BY CLUBS THIS YEAR DURING THE

Annual Club Subscription Contest

1. The Contest is open to all sportsmen's clubs in New Jersey.
2. Subscriptions are not restricted to a club's membership.
3. Subscriptions may be either new or renewals.
4. Each subscription counts as one point.
5. Subscriptions for more than one year count one point per year.
6. Three-year subscriptions for \$2.50 count as three points.
7. Entries must be postmarked not later than December 31, 1961.
8. Please show correct POST OFFICE address.

(Kindly inform each subscriber that he may expect to receive his first copy of *NEW JERSEY OUTDOORS* approximately six weeks after you send in his subscription with remittance.)

Please list subscribers on plain paper and send with remittance to:
NEW JERSEY OUTDOORS, 230 W. State Street, Trenton 25, New Jersey

STATE OF NEW JERSEY

ROBERT B. MEYNER
Governor

DEPARTMENT OF CONSERVATION AND ECONOMIC DEVELOPMENT

H. MAT ADAMS
Commissioner

DIVISION OF FISH AND GAME

A. HEATON UNDERHILL
Director

FISH AND GAME COUNCIL

EARL L. McCORMICK,
Chairman, Bridgeton

LAWRENCE BOHM, Eldora

FRED H. TOTTEN,
Ringoes

HARRY FROME, Blirstown

DAVID H. HART,
Cape May

HENRY J. KELLY, Cranford

WILLIAM C. LUNSFORD, Jr.
Wildwood Crest

GEORGE H. McCLOSKEY,
Flanders

RALPH T. McNEEL,
Hackettstown

GEORGE C. ONKST,
Penns Grove

CLARENCE A. SHEPPARD,
Pittstown

LAW ENFORCEMENT

WILLIAM P. COFFIN,
Chief Conservation Officer

JOSEPH K. MATHIS,
District Conservation
Officer—Marine

WILDLIFE MANAGEMENT

L. G. MacNAMARA,
Chief of the Bureau

OSCAR SUSSMAN, D.V.M.,
Veterinary Consultant

FISHERIES MANAGEMENT

ROBERT A. HAYFORD,
Chief of the Bureau

PUBLIC RELATIONS

JULES W. MARRON, Sr.,
Supervisor



Published monthly by the State of New Jersey Division of Fish and Game
in the interest of conservation and restoration of wildlife and
the betterment of hunting and fishing in New Jersey.

IN THIS ISSUE

	PAGE
Jersey Joe	<i>Bob Cypher</i> C-2
Help Green Acres	1
Small Game	<i>L. G. MacNamara</i> 5
Wetland Acquisition	<i>Edward G. Bevan</i> 9
Lands Open To Hunters	13
Hunting Grounds—Map	16
Waterfowl Gunning	20
Green Acres	<i>Harry Grosch</i> 21
Council Highlights	26
Fur, Fin and Campfire	<i>Jack Sords</i> 28
Why Clean Waters?	<i>Joseph Mills</i> 29
Violators Roundup	30

Cover—"DOUBLE OR NOTHING"—*Harry Grosch*
Green Acres can help quail gunning

Editor: **Bob Adams**

Vol. 12, No. 5, November, 1961

Publication Office: DIVISION OF FISH AND GAME,
230 West State Street, Trenton 25, New Jersey

Second class postage paid at Trenton, N. J., and additional mailing office.

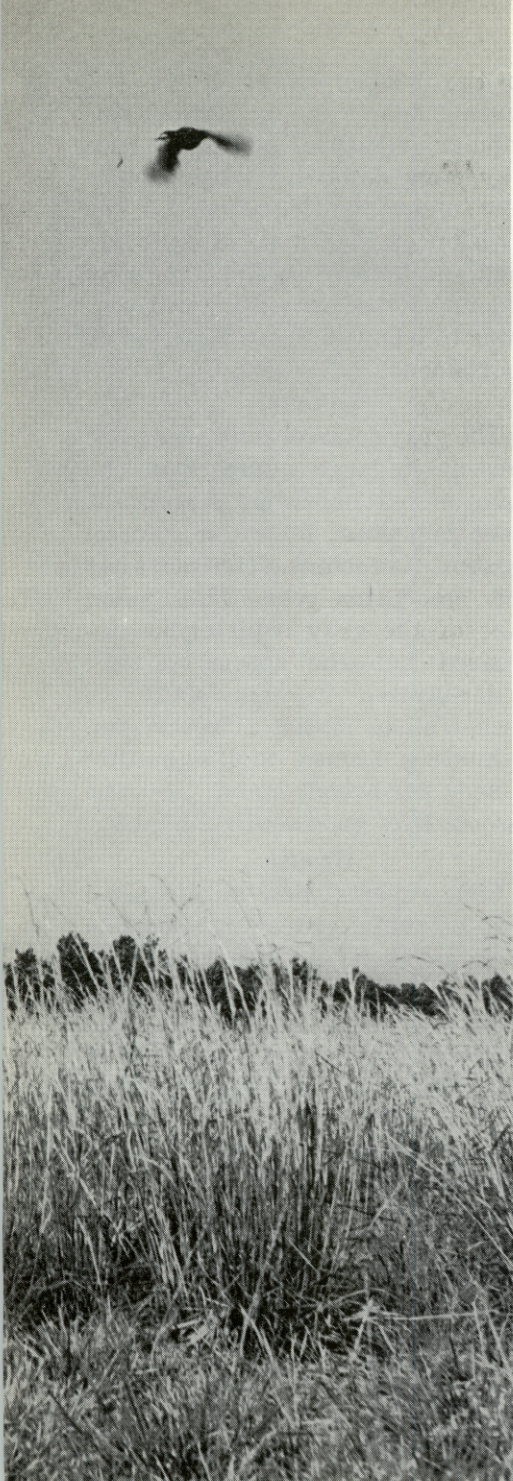
Subscription: \$1.00 a year, by check or money order, payable to Division of Fish and Game. Cash is forwarded at sender's risk. No stamps, please.

Change of Address: Should be reported directly to the Editor. Send both old and new address. The Post Office will not forward copies unless forwarding postage is provided by subscriber. Copies not delivered through failure to send change of address six weeks in advance cannot be replaced.

Comments, news items, letters, photographs, sketches, and articles are gratefully received. All unsolicited material is sent at the sender's risk.

Permission granted to reprint with credit to **NEW JERSEY OUTDOORS**.





The 1961

SMALL GAME

Season

By L. G. MACNAMARA, *Chief*
Bureau of Wildlife Management

AS THE OPENING of the small game season draws near, a review of field reports of the status of our several small game species leaves the very real impression that they did not suffer excessively from the severity of our late winter. A series of mild winters allows us to forget the ruggedness and adaptability of our furred and feathered game and causes anxiety for their welfare on the part of many well-meaning citizens when heavy snows and sub-freezing temperatures appear. Of course, the severe winter of 1960-61 did cause a mortality but it left in its wake a strong and virile breeding stock. The offspring of

. . . Small Game

this breeding stock are now present in the coverts of New Jersey and in sufficient numbers to augur a good hunting season this fall.

Quail

The bobwhite quail has responded satisfactorily. Even though the population is regarded as lower than last year, there is an ample supply to furnish intensive hunting by those fortunate hunters who have the assistance of a well-trained and experienced bird dog. The supply of bobwhite is adequate and the native population will be supplemented by pre-season liberations of artificially propagated birds.

Pheasant

The ring-necked pheasant population is reported to be improved over last year in those areas of the state where good pheasant habitat is present. This Asiatic toughie showed no ill effects from the severe winter. Nesting success was high. Broods were large, and they have maintained good numbers during the growing season.

Rabbit

Our number one game animal, the cottontail rabbit, presents an irregular and uneven pattern. This species of wildlife, which can increase faster than other wildlife and also decrease in greater numbers, has done well in the northern and southern parts of the state but is very spotty in the central portion. Despite these local variations in abundance, there are many hours of recreation available

to the beagle owner, adult and juvenile sportsmen, in hunting this popular, versatile, and sometimes wily game animal. A program is now under consideration by the Division of Fish and Game to extend and improve rabbit habitat in order that the cottontail will continue to be available to New Jersey sportsmen.

Squirrel

The gray squirrel continues to be present in large numbers in the older mixed hardwood stands. A most important factor in squirrel existence is food, and tree mast has been good this year. The annual take of the gray squirrel has increased but the species is still under-utilized in this state. A pocketfull of shells, a trusty gun, a hunting license, and a mature mixed hardwood stand are the essentials of good squirrel hunting.

Grouse

Field reports show an increased crop of ruffed grouse, particularly in the northern section of the state. This means more happy hours afield for those individuals who comb the more rugged sections of the state for this prize of game birds.

Coon and Fox

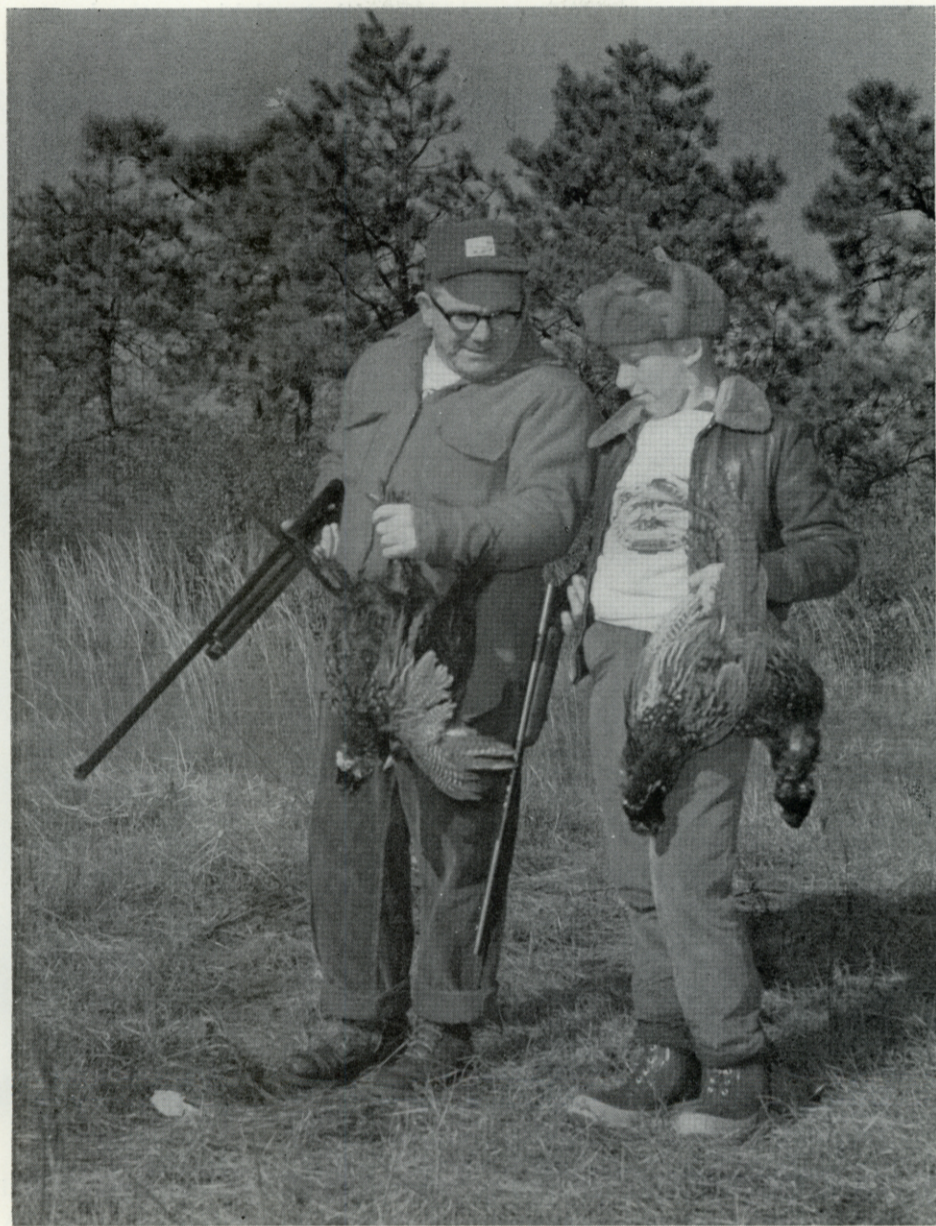
Raccoons have continued to maintain a high population. The gray fox has decreased; the red fox showed an increase to an extent estimated to show an overall increase in foxes above that of last year.

In General

With the exception of the cottontail rabbit and the bobwhite quail,

it is estimated that wild game populations are improved over 1960. Despite the encroachments of in-

dustrial, high speed roads, urbanization, and intensive agriculture, the opportunity to hunt successfully



The opportunity to hunt successfully remains a reality in New Jersey

. . . Small Game

remains a reality in New Jersey.

Safety

Safe and careful hunting must be a major consideration of every

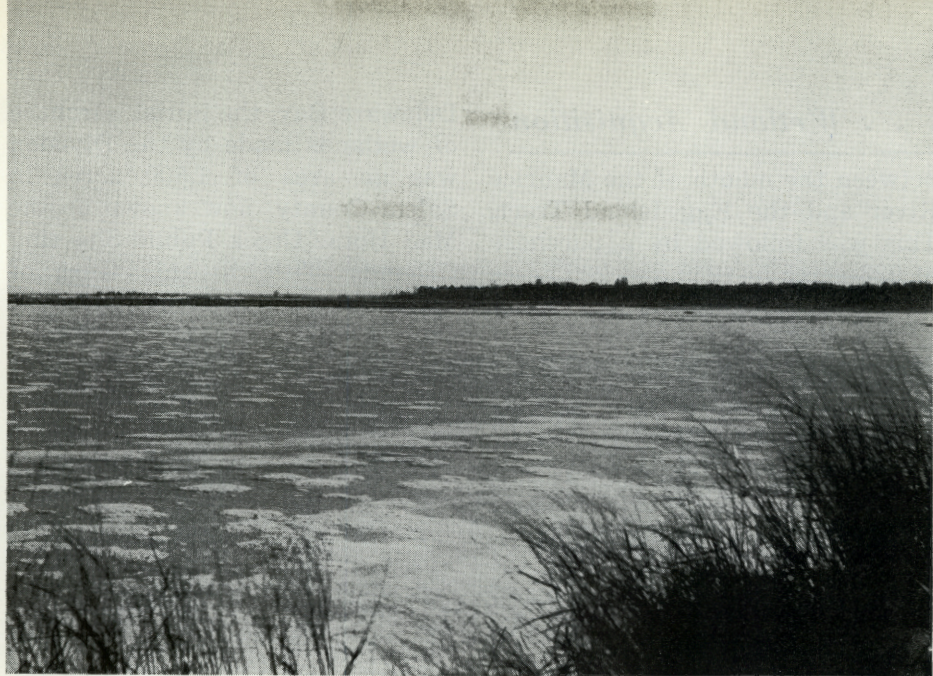
pass and know how to use it. It is hard to believe that hunters can become lost in this highly populated state, but it happens every year with hardship to the hunter, anxiety on the part of Division of



Hunters entering the woods should hunt safely and be prepared

license holder. Even though land is unposted, always secure permission to hunt. For those who hunt the pine region, be sure to take a com-

Fish and Game personnel, and worryment to the folks at home. A compass and familiarity with its use can prevent this. #



Wetland Acquisition

on Delaware Bay

By EDWARD G. BEVAN, Senior Wildlife Manager,
Bureau of Wildlife Management

THE FIRST acquisition project carried out by the New Jersey Division of Fish and Game along the shores of the Delaware Bay was the purchase of the Egg Island marshlands in Cumberland County in 1947.

This 5,610-acre marsh, one of the more important breeding grounds for ducks and some species of shore birds, is also an area of great significance in the migration of water fowl and the wintering quarters for myriads of snow geese. The marsh is well broken with ponds, varying in size from mere potholes

to the 20-acre Widgeon Pond and the 90-acre King's Pond. Several navigable creeks pass through the tract, the important ones being Dividing Creek, Fishing Creek, Oranoken Creek, and Straight Creek. Because of these waterways, access to the greater portion of the marsh is possible only by boat. Launching sites on the Bay and on the larger creeks are utilized by hunters and fishermen frequenting the Egg Island area.

In 1958, under an accelerated wetlands acquisition program, 698 acres of marshland were acquired

. . . Wetland Acquisition

between the mouth of the Maurice River and the Egg Island Tract. This was followed by a purchase of 923 acres in 1959 and 200 acres in 1960, increasing the total hold-

Delaware Bay, the initial purchase of wetlands made by the Division was an area of 1,800 acres in Salem County, now known as the Mad Horse Creek Public Shooting Grounds. Title to this tract of marsh was acquired in 1957, just



Heislerville Public Shooting Grounds is accessible by road and boat

ings of the Division's Delaware Bay marshes situated between the Maurice River and Fortescue. There are approximately 9 miles of frontage on the Bay. All of the properties acquired are contiguous with the exception of one block of 145 acres. The later acquisitions are all accessible by boat and in some cases by road.

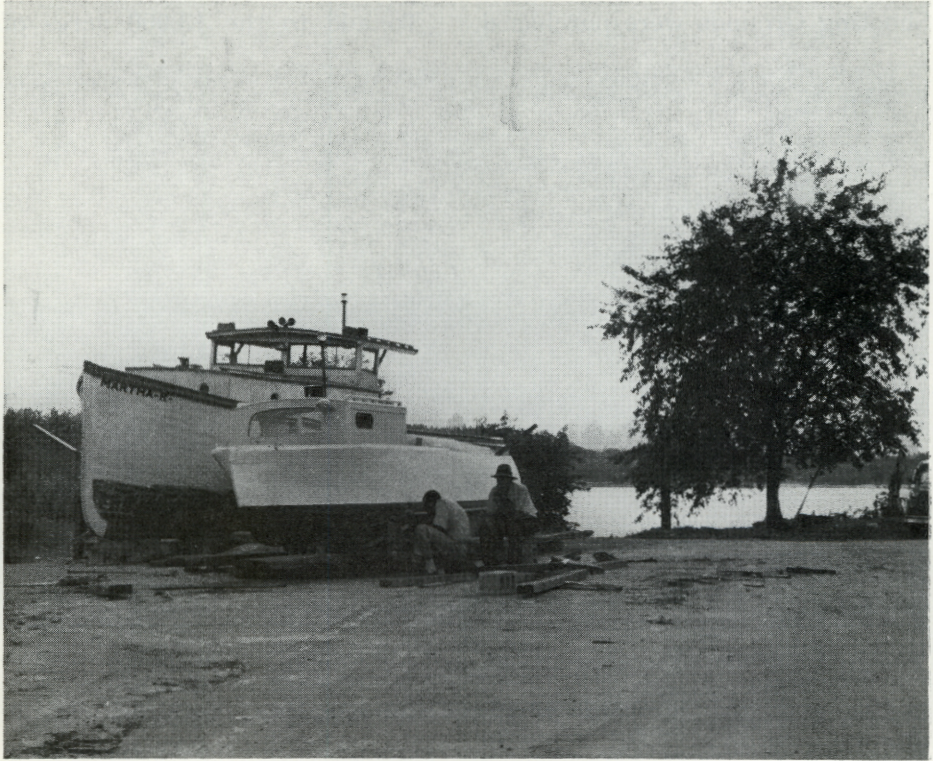
On the upper reaches of the

prior to the opening of the waterfowl season, and the area was opened immediately for public use. The original purchase extended from Mad Horse Creek on the northwest side to Stow Creek on the southeast side, with a very irregular boundary line and many exceptions on Stow Creek.

This marshland is not as well broken with salt ponds as the Egg

Island Tract, but it does include a considerable amount of water surface in its many small creeks and ditches. The larger, navigable watercourses flowing through it are Lower Deep Creek, Upper Deep Creek, Cherry Tree Creek, Malapartis Creek, and Little Creek. Although accessible by road, a boat is required to traverse the entire

possible was started in 1958. During that year six parcels, ranging in size from 6 to 132 acres, and totaling 257 acres in area were purchased, including additional frontage on Delaware Bay and a boat launching site on Stow Creek. Eleven plots of marsh, from 5 to 34 acres each and totaling 171 acres were added in 1960 along



Stow Creek Landing is the gateway to the Mad Horse Creek tract

area; and, a boat launching site was included in the original purchase.

To enlarge the area and extend the property to cultural and natural boundaries, such as roads and watercourses, a program of acquiring as many of the exceptions as

Stow Creek, and three properties totaling 279 acres were purchased on Little Creek in early 1961. With the addition of the Round Island Tract, which adjoins Mad Horse Creek on the northwesterly side, the total acreage of this wetland

. . . Wetland Acquisition

unit in Salem County now exceeds 3,000 acres. And it has a frontage on Delaware Bay of approximately 5½ miles.

Two other important wetland acquisitions are situated on the Delaware Bay and are located east and southeast of the Maurice River. The Heislerville Public Shooting Grounds were purchased

which extends from the Bay for a distance of 2½ miles along the northerly side of Dennis Creek. This area was purchased in two segments, 814 acres being acquired in 1956 followed by an addition of 348 acres in 1958, bringing the total area of this marsh unit to 1,162 acres. The tract is accessible by road and a boat launching site is provided on Dennis Creek.

To add to the 13,000 acres of



The Division now owns over 13,000 acres of Shooting Grounds on the Bay

in 1956 and, with several later additions, now total 3,361 acres in area and include both tidal and diked marshes. This tract has frontage on both the Maurice River and the Bay, and is accessible by road. Boat launching sites and commercial boat liveries are present on both bodies of water.

Six miles to the southeast of the Heislerville Tract is the Dennis Creek Public Shooting Grounds,

Delaware Bay marshes now in state ownership, several wetland areas are under consideration at the present time, with some already in various stages of acquisition. Since access to the waterways of the state for hunters and fishermen who transport their own boats on car tops and trailers has become an acute problem, the Division includes access sites in the acquisition projects wherever possible. #

LANDS OPEN TO HUNTERS

The Public Hunting Grounds and the State Forests

Many sportsmen are finding that the answer to finding a place to hunt is to hunt on one of the many state-owned tracts open to hunters, fishermen, and the general public.

The Public Shooting and Fishing Grounds of the Division of Fish and Game and the State Forests of the Forests and Parks Section are open to all sportsmen licensed to hunt in New Jersey. The Division's grounds were purchased with a portion of your license dollars, the Forests from your tax money. They are your lands to use.

Most of these lands are located in the northwestern and southern part of the State away from the centers of population simply because it is chiefly in these areas that suitable land was available. However, the modern State and Authority highway systems make each area readily accessible and within reach of all sportsmen for even a day's hunt. You should be able to reach one in an hour's drive.

Because of their easy accessibility, and because of the decrease in the acreage of private lands available to hunters in general, these lands, especially the intensively managed and heavily stocked public shooting grounds, are heavily utilized by gunners. So expect plenty of company. But, you can at least count on a place to hunt.

The land map on pages 16 and 17 is presented for your convenience in locating the various tracts of state land open to hunters. The scale and outlines of the areas are merely approximate. Additional information about lands and facilities is given on the following pages.

PUBLIC HUNTING & FISHING GROUNDS

<i>Tract</i>	<i>County</i>	<i>Kind of Game</i>
1. Corbin City	Atlantic	Duck,* rabbit, quail, pheasant, rail, deer, snipe, raccoon, squirrel.
2. Medford	Burlington	Quail, pheasant, rabbit,* squirrel.
3. Winslow	Camden	Deer.*
4. Tuckahoe	Cape May	Rabbit, quail, pheasant, duck,* rail, deer, snipe, raccoon, squirrel.
5. Marmora	Cape May	Duck,* rail, geese, brant.
6. Dennis Creek	Cape May	Duck,* rail, snipe, geese.
7. Millville	Cumberland	Rabbit, quail,* raccoon, pheasant, squirrel, deer.
8. Egg Island	Cumberland	Waterfowl,* rail.
9. Heislerville	Cumberland	Waterfowl,* pheasant, quail, rail, rabbit, squirrel.
10. Peaslee	Cumberland	Deer,* quail, squirrel, raccoon, fox.
11. East Point	Cumberland	(Landing for Cadwalader and Egg Island Public Shooting and Fishing Grounds.)
12. Glassboro	Gloucester	Rabbit, quail,* raccoon, pheasant, squirrel.
13. Clinton	Hunterdon	Pheasant,* squirrel, deer, rabbit.
14. Turkey Swamp	Monmouth	Pheasant, squirrel, deer, rabbit, quail.*
15. Berkshire Valley	Morris	Pheasant,* squirrel, deer, rabbit, woodcock.
16. Manahawkin	Ocean	Waterfowl, quail,* pheasant, rabbit, raccoon, deer.
17. Greenwood Forest	Ocean	Raccoon, fox, deer,* squirrel.
18. Colliers Mills	Ocean	Waterfowl, quail,* pheasant, rabbit, raccoon, deer.
19. Whitings	Ocean	Deer,* fox, raccoon.
20. Manchester	Ocean	Deer,* fox, raccoon.
21. Pasadena	Ocean	Deer,* fox, raccoon.
22. Butterfly Pond	Ocean	Ducks.*
23. Mad Horse Creek	Salem	Ducks,* snipe, rail, geese.
24. Walpack	Sussex	Pheasant, rabbit, grouse,* woodcock, deer.
25. Roy	Sussex	Pheasant,* rabbit, grouse, woodcock, deer.
26. Hainesville	Sussex	Pheasant,* rabbit, grouse, woodcock, deer.
27. Flatbrook Valley	Sussex	Pheasant,* rabbit, grouse, woodcock, deer.
28. Hamburg Mountain	Sussex	Deer, woodcock, grouse,* squirrel.

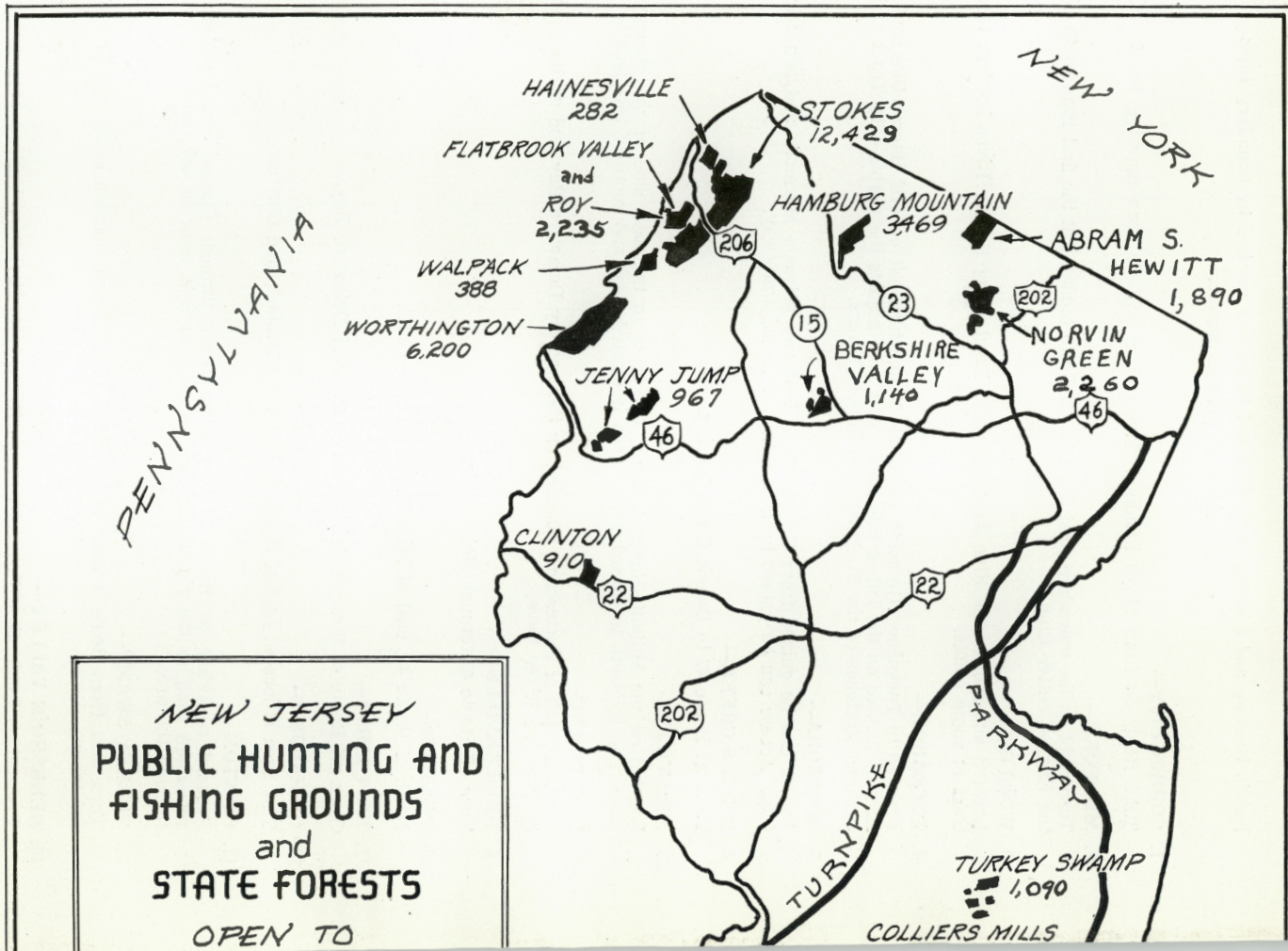
* Most important species

Note: The Turkey Swamp, Greenwood Forest, Whitings, Manchester, Pasadena, and Hamburg Mountain Tracts are undeveloped as yet and offer only limited facilities.

Directions for Locating Public Hunting and Fishing Grounds

Public Hunting and Fishing Grounds listed below are marked by boundary signs usually metal or printed posters.

1. **CORBIN CITY—**
Take Route 50 from Mays Landing. Metal signs will be seen marking the tract.
2. **MEDFORD—**
Turn right on the macadam road from Mt. Holly to Medford at the first road south of the English Setter Club.
3. **WINSLOW—**
Located adjacent to the Blue Anchor-Folsom Road. Egg Harbor River borders this tract at some points.
4. **TUCKAHOE—**
Proceed to Tuckahoe. Go south on Route 50 and turn left on first intersection road. Area is located on the left of this road. This area adjoins the Corbin City Tract and contains stretches of the Tuckahoe and Middle Rivers.
5. **MARMORA—**
Access can be gained from Garden State Parkway between Marmora and Sea Isle City. Access can be gained by boat from the inland waterway.
6. **DENNIS CREEK—**
Turn off Route 47 to Dennis Creek landing.
7. **MILLVILLE—**
Located on the Millville-Newport Road. Or, cross to the west side of the Maurice River and go south to Buckshutem. Area is located west and south of this location.
8. **EGG ISLAND—**
Located south of Fortescue. Bounded on the west by Delaware Bay and on the east by Maurice River Cove.
9. **HEISLERVILLE—**
Turn off Route 47 through Heislerville.
10. **PEASLEE—**
North of Route 49, east of Millville near Cumberland.
11. **EAST POINT—**
Turn off Route 47 through Heislerville to shore of Delaware Bay.
12. **GLASSBORO—**
This area is located east of Route 47 between Glassboro and Clayton.
13. **CLINTON—**
Proceed westward on Route 22 to Clinton. Pass through Clinton and take first macadam road to the right. Follow this road to first road to left, which passes through the area.
14. **TURKEY SWAMP—**
Turn west from Route 9 south of Freehold. This area is located south and east of Smithburg.
15. **BERKSHIRE VALLEY—**
Proceed on Route 46 to Dover. Turn on Route 15 to Berkshire Valley. Turn left at Berkshire Valley Hotel and proceed toward Kenvil. (Please turn to page 18.)





New Jersey Outdoors
 NUMBERS INDICATE ACREAGE
 EXCEPTIONS NOT SHOWN

. . . Directions for Locating Public Hunting and Fishing Grounds

16. **MANAHAWKIN—**
Area is located immediately north of Route 72 from Manahawkin to Beach Arlington.
 17. **GREENWOOD FOREST—**
Located between Whiting and Cedar Bridge along Route 539.
 18. **COLLIERS MILLS—**
Take New Egypt-Cassville Road to Archer's Corner. Turn south at Archer's Corner and proceed to end of macadam road. This area contains several developed lakes.
 19. **WHITINGS—**
Located between Whiting and Lakehurst, east of the C.R.R. of N.J.
 20. **MANCHESTER—**
Located east of the macadam road No. 539 that runs from Whiting to Hornerstown.
 21. **PASADENA—**
Located east of the macadam road that parallels the C.R.R. of N.J. and is located between Route 72 and Whiting.
 22. **BUTTERFLY POND—**
In Jackson Township on Butterfly Road off Route 528.
 23. **MAD HORSE CREEK—**
Take road from Canton to Stow Creek Landing. Sign indicates dock area. Access to this area can be made only by boat.
 24. **WALPACK—**
Take Route 206 north past Culvers Lake. Turn left on first road past Stokes State Forest Headquarters. Proceed through Bevans and Walpack Center. Signs will be observed approximately midway between Walpack Center and Flatbrookville.
 25. **ROY—**
This property bounds the southern boundary of the Flat Brook Tract and is now regarded as part of the larger unit.
 26. **HAINESVILLE—**
Follow Route 206 north to Hainesville. Turn right on the first road past the Hainesville Garage. Turn sharp left at first crossroad.
 27. **FLATBROOK VALLEY—**
Follow Route 206 north past Culver Lake. Turn left on first road past Stokes State Forest Headquarters and follow the macadam to Bevans.
 28. **HAMBURG MOUNTAIN—**
This area is located on Route 23 between Stockholm and Franklin.
-
-

OTHER DIVISION INSTALLATIONS TO VISIT

1. **CHARLES O. HAYFORD FISH HATCHERY—**interesting anytime of the year. Located west of the Hackettstown business district. Follow "Hatchery" signs.
2. **EDWARD H. ROTH GAME FARM—**a model unit where the bobwhite quail are produced. Located on Route 528 at Holmsville, south of the road.
3. **FORKED RIVER GAME FARM—**ring-necked pheasant breeding and experimental rabbit project. Located on U. S. Route 9 in Forked River, east of the road.
4. **ROCKPORT GAME FARM—**vast pheasant producing farm. Located at Rockport, southwest of Hackettstown, and northwest of Beattytown.

STATE FORESTS OPEN TO HUNTERS

<i>Forest</i>	<i>County</i>	<i>Kind of Game</i>
A. Bass River	Burlington and Ocean	Squirrel, deer,* rabbit, raccoon.
B. Belleplaine	Cape May and Cumberland	Rabbit, deer,* raccoon, squirrel.
C. Green Bank	Burlington and Atlantic	Rabbit, deer, raccoon, quail.*
D. Abram Hewitt	Passaic	Grouse,* deer, rabbit, squirrel.
E. Jenny Jump	Warren	Grouse,* squirrel, deer.
F. Lebanon	Burlington and Ocean	Deer,* rabbit, fox, raccoon.
G. Norvin Green	Passaic	Grouse,* squirrel, deer.
H. Penn	Burlington	Raccoon, fox, deer,* squirrel.
I. Stokes	Sussex	Deer,* rabbit, grouse, squirrel.
J. Worthington	Warren	Deer,* grouse, squirrel, raccoon, fox.
K. Wharton	Atlantic, Burlington, Camden	Deer, rabbit, fox, raccoon, quail, woodcock, grouse.

* Most important species

DIRECTIONS FOR LOCATING STATE FORESTS

State forests are marked by boundary signs usually carved in wood or printed posters.

A. BASS RIVER STATE FOREST—

Located north and east of New Gretna between Wading River and Tuckerton. Take Route 563 Spur. U. S. 9 or Garden State Parkway.

B. BELLEPLAIN STATE FOREST—

Located west and south of Woodbine on Routes 550 and 47. Via Route 47 or 49.

C. GREEN BANK STATE FOREST—

At Greenbank and east of Lower Bank. Via Routes 542 and 563.

D. ABRAM HEWITT STATE FOREST (undeveloped)—

Lies northwest of the town of Greenwood Lake, between Greenwood Lake and Upper Greenwood Lake, via Routes 513 and 511. Inquire locally.

E. JENNY JUMP STATE FOREST—

Part situated north of Buttzville, via U. S. 46. Take road to Mountain Lake. Also part east of Hope in area north of "Land of Make Believe" via Great Meadow road.

F. LEBANON STATE FOREST—

Located east and north of the junction of Routes 70 and 72, between Red Lion and Whiting.

G. NORVIN GREEN STATE FOREST (undeveloped)—

Located north of Butler via Route 23. Take Lindy's Lake road and ask locally.

H. PENN STATE FOREST—

Situated southeast of Chatsworth between Routes 563 and 530. Take Jones Mill road off Route 563 and go southeast. Consult your map and compass.

I. STOKES STATE FOREST—

Located north and south of U. S. 206 above Culvers Lake. Take roads leading south to Tillman Ravine or roads leading north toward High Point. (Watch for High Point State Park boundary signs — No Hunting in Park).

J. WORTHINGTON—

Located northeast of Delaware Water Gap, via U. S. 46. Take river road north.

K. WHARTON—

Located north and east of Hammonton, via U. S. 206 or Routes 534, 536, 541 or 542.

WATERFOWL GUNNING POSSIBILITIES

BRIGANTINE NATIONAL WILDLIFE REFUGE

The public hunting area for waterfowl on the Brigantine National Wildlife Refuge will be open again this year for licensed hunters of New Jersey.

Access to the main marsh area has been improved by a lease allowing the right of ingress and egress by hunters through Scott's Ditch, located on the road to Oyster Creek. The entrance will be adequately marked by signs. The arrangement for allowing hunters to use Scott's Ditch as an embarking point was made on a cooperative basis by the United States Fish and Wildlife Service and the State Division of Fish and Game.

The use of a portion of the Brigantine National Wildlife Refuge as a public hunting ground is also a cooperative venture between the Federal Wildlife Service and the State Division of Fish and Game. Operation of the area has been carried on for several years and as a result an excellent waterfowl hunting ground has been made available to the public of New Jersey.

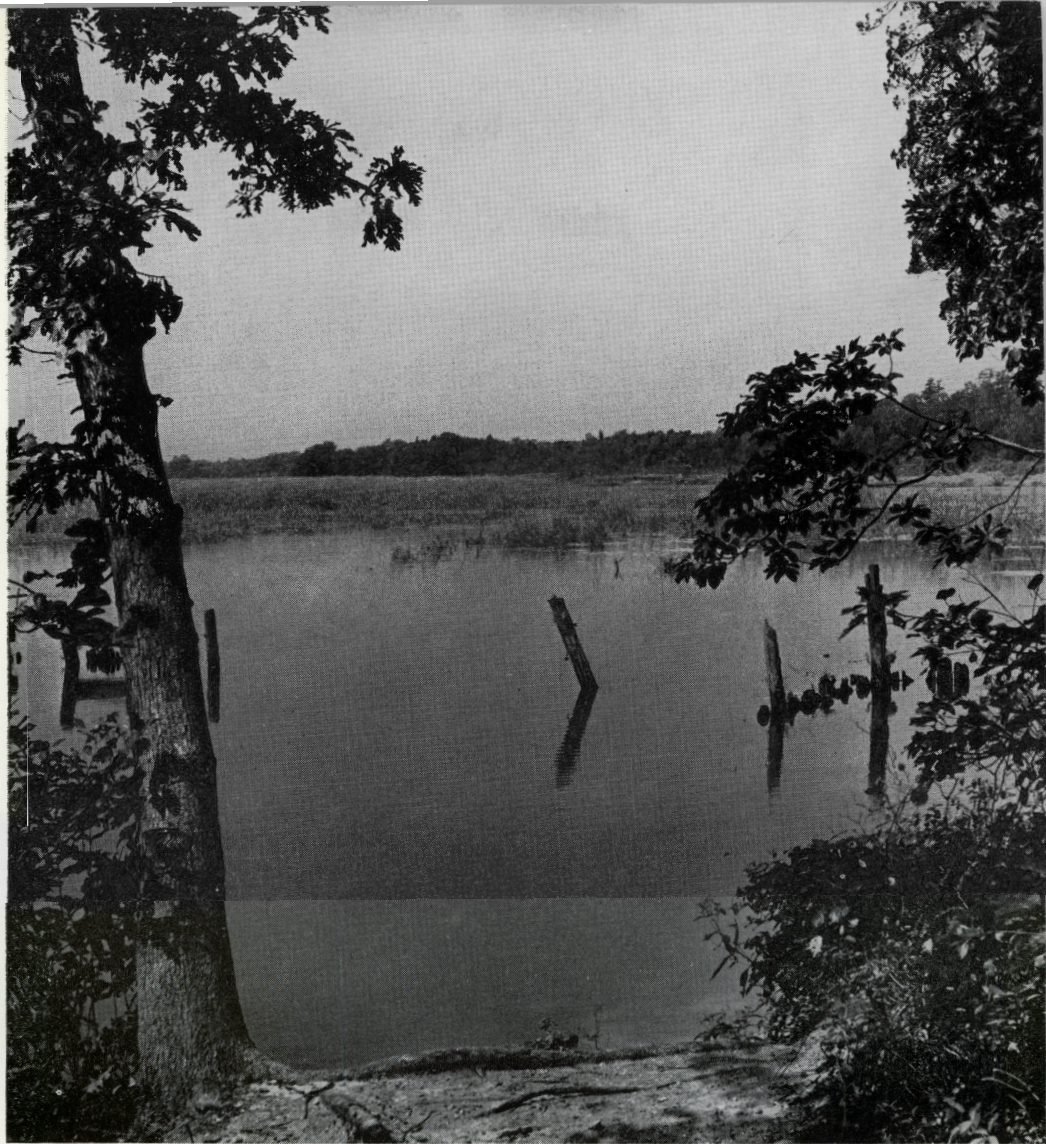
Cooperation between the State Division of Fish and Game and the United States Fish and Wildlife Service extends to many other conservation ventures but the multiple use that has taken place on the Brigantine National Wildlife Refuge is considered to be an outstanding piece of cooperative work with mutual benefits to all concerned.

Further information concerning the use of the Brigantine Public Hunting Area can be secured from Brigantine National Wildlife Refuge, Refuge Manager, Absecon, N. J., or the New Jersey Division of Fish and Game, 230 West State Street, Trenton 25, N. J.

STATE PUBLIC HUNTING GROUNDS

Very good waterfowl hunting is to be found on the following Public Hunting Grounds: Corbin City, Tuckahoe, Dennis Creek, Egg Island, Marmora, Cadwalader, and Mad Horse Creek. Also, waterfowl gunning is good on the Manahawkin and Colliers Mills areas.

**A HANDY WHERE-TO-GO-GUIDE
FOR YOUR CONVENIENCE TO TAKE ON YOUR HUNTING
TRIPS, THESE EIGHT PAGES, STARTING WITH PAGE 13,
MAY BE PULLED FREE OF THE MAGAZINE.**



Green Acres

prospects

THE ACCESS SITE on the Metedeconk River, shown above, is one of the many prospective acquisitions that could be made a reality with Green Acres funds. On the following four pages a number of other possibilities for Green Acres lands are shown.

Photographs by HARRY GROSCH



... **green acres** will protect areas that support fish and wildlife and thus help to improve fishing and hunting. The above bay area near Sea Bright would be good as a boat launching site. The Wawayanda Tract, below, could offer both hunting and fishing.





The sector along the Musconetcong River, above, is prime gunning territory. The riffes of the Musconetcong, below, are trout waters. (Note the "Keep Off" sign at right.)





. . . **green acres**

needed for tomorrow must be secured and protected now. Fishing waters, such as the stretch on the Pequest River shown at left, could be lost forever without Green Acres funds. Union Lake, below, would be ideal for fishing, swimming, and boating.





Beach areas for surf casting and bathing, such as the above at Long Branch, are fast disappearing. Lands for Green Acres are still "available." Prices are high; but, they will continue to rise as the demand for land increases. #



COUNCIL HIGHLIGHTS

SEPTEMBER MEETING

The open session of the regular monthly meeting of the Fish and Game Council was held on September 6. In addition to the Council, Mr. Gross (in Director Underhill's absence), and Staff, the following attended: Nelson Benedict, Mrs. Lillian Godown, Roy H. Williams, and Edward Jackson.

December 20 Deer Season

The Council members present who voted at the public hearing in favor of the December 20 deer season signed the statement prepared by Deputy Attorney General Wodlinger. Councilman Onkst moved it be accepted and that the Attorney General proceed in defense of the Council, if and when a case arises. This was seconded by Councilman Bohm. All ayed and the motion carried.

Law Enforcement Report

Chief Coffin stated that three parts of the Conservation Officer manual will be ready in a month or two, however, the legal portion will not be ready then. He hopes that the whole manual can be completed by the end of the year.

Mr. Coffin reported that three of the four temporary Conservation Officers passed the Conservation Officer examination in first, second, and third position. The fourth temporary Conservation Officer did not pass. The top three will be certified, appointed, and assigned. The fourth assignment is to be filled by the fourth man on the list. Chief Coffin reported that of the 31 who took the Conservation Officer examination seven passed.

Chief Coffin reported that three radio base stations are in operation at the present time. The fourth base station, in Trenton, is not completely hooked up. Councilman Onkst asked that report on rentals and cost involved be made to the Council.

Brigantine Boats

Nelson Benedict asked if there would be a boat at Brigantine for the brant hunters this fall. Chief MacNamara stated that there would and there may possibly be two, since two operators expressed an interest in this. Final arrangements have not yet been made. The Division does not tie in to this, but we do make arrangements in cooperation with the refuge and these people are given permission to run this taxi service. The service must be available at Motts Creek at 9:00 a.m. to take the hunters over and back at 4:00 p.m. to pick them up.

Marine Fisheries

Mr. Benedict stated that Fisheries Biologist Paul Hamer had done a remarkable job on the porgy investigation and asked if the Council were aware of the serious plight of the fluke fishery. He stated that

fishermen are now catching fish-of-the-year and should there be a spawning failure, there would be no fluke the following year.

Councilman Kelly stated that we have been aware of the situation and Mr. Hamer has been working with the federal people for the past year and a half. They have for some time been afraid that the fluke fishery was being over-exploited, and the presence of a considerable number of small fish further implemented these ideas. They are definitely watching that situation and making investigations. Mr. Gross will see to it that the Council gets a further report on the situation.

Councilman Lunsford stated that the Atlantic States Marine Fisheries Commission has been very active in this matter, in cooperation with the Federal Government, and he states that it will come up at the Commission meeting next month. Mr. Benedict reported that this month the Fish and Wildlife Service commenced its inventory of salt water sport fishing. The figures show that in New Jersey the catch of edible fish by anglers far exceeds the catch by commercial fishermen.

Game Management

Chief MacNamara reported Forked River wiring plans are drawn, but nothing will be done until after the breeding season. The cost will not be too great; the main cost is the transformer. The Quail Farm is already hooked up.

The Game Farms are carrying nice birds and production will be ample for our needs this coming fall. Wildlife development work has been started at Greenwood Forest. This is moving slower than anticipated, but it is underway. Mr. MacNamara reported that the Forked River rabbit project failed pretty much because of predation. However, the scientific knowledge gained there by Dr. Shope has been valuable.

Federation Resolution

Mrs. Lillian Godown read to the Council a resolution taken from the May 20, 1955, meeting minutes of the Mercer County Federation of Sportsmen's Clubs. This resolution specified certain qualifications for candidacy to the Fish and Game Council. The resolution was voted upon by the State Federation of Sportsmen's Clubs on September 13, 1955, and it was turned down.

Striped Bass

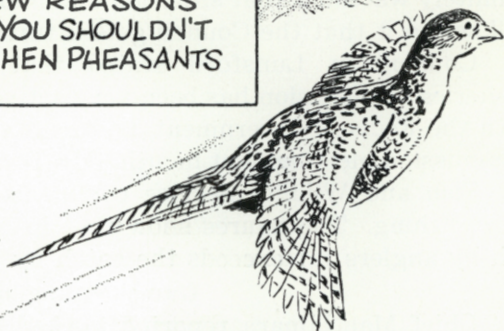
The Council discussed numerous letters received concerning the proposed change of the striped bass limit from 18 inches to 12 inches. Mr. Benedict stated that the Fisheries Biologists at the Woods Hole Oceanographic Institute, and others doing striped bass studies, agree that the 18-inch law is obsolete. The fish are not harvested, and the law presents enforcement headaches. Mr. Gross was asked to see that information is presented to the Chairman and the other Council members, prior to the next Council meeting, containing biological information on the proper size limit on striped bass. #

Fur, Fin ^{and} Campfire

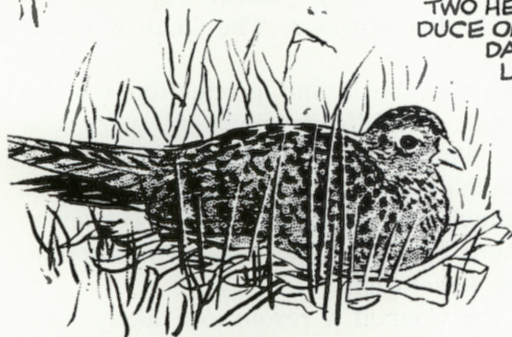
By JACK SORDS



A FEW REASONS
WHY YOU SHOULDN'T
KILL HEN PHEASANTS



IT USUALLY TAKES
TWO HENS TO PRO-
DUCE ONE HUNTER'S
DAILY BAG
LIMIT OF
COCKS



ONLY HALF THE HENS REAR A BROOD.
THE OTHERS EITHER FAIL IN NESTING,
ARE ACCIDENTLY KILLED OR DIE A
NATURAL DEATH



ONLY THREE, IN THE AVERAGE
MATURE BROOD OF SIX, ARE COCKS

It is unlawful to possess, take, or attempt to take female pheasants

Why Clean Waters?

By JOSEPH MILLS
Warren County 4-H Club

When America was first inhabited by the Indians, there were clear, clean, sparkling streams throughout the land, and uncontaminated oceans along the coasts. From these waters, the Indians derived food, sports, and routes of travel. Game from the surrounding forests depended upon the streams for water. These waters supported fish, muskrats, minks, raccoons, and other water animals.

Today, in this modern world of ours, pure water is becoming a scarcity. We do not have the respect for water that the Indians did, nor do most of us think of it as a life giving substance. Water is more or less taken for granted, and is expected to take care of itself. If this were so, nature would have provided streams and oceans with purifying facilities so that they could keep up with the waste that is dumped into our streams daily.

Water is needed for the survival of wildlife and humans; and for its use in industry. It is essential for wildlife because fish and many water animals, such as the muskrat, use water for food and shelter. The streams also provide drinking water for deer, foxes, and other land animals. Marshes are the homes of many breeds of birds like the ducks, geese, and song birds as well.

Water is vital to man's life because it provides for man's growth and health, as well as that of his livestock and plants, and is a source of food. Since water is used and needed in every home, it should be available in its pure form and in a plentiful supply.

Water is also important in industry. Industries utilize the major portion of the water used daily in parts of our state. Unfortunately, some industries dump the same amount of sewage, or more, into rivers or streams, from which they drew out pure water. To keep up with the growing population, we must preserve our rivers, lakes, and ocean waters from becoming polluted by the factories, refineries, and other industries.

Pollution is not a new problem, but it is a grave matter confronting our state, and many other states. If all of the people and industries of the state would unite forces and combat this problem together, a lot more could be accomplished. If we don't do something about it, drastic results could follow: epidemics of typhoid and other diseases caused by unfit drinking water. Polluted marshes provide excellent breeding conditions for disease carrying mosquitoes. Human life would be destroyed and industry would be at a standstill.

Some people will say, "I live in the city. Pollution of streams, lakes, and oceans 50 miles away doesn't affect me." The person who deludes himself with this excuse is really saying, "Water pollution is the State's problem. Let the State take care of it." As our 35th President, Mr. John F. Kennedy, said in his inaugural speech, "Do not ask, 'What can the State do for me?,' but 'What can I do for the State?'"

In closing, it might be said that pollution and conservation are problems caused by the people, and problems that must be solved by the people. #

VIOLATORS ROUNDUP

JULY 1961

<i>Defendant</i>	<i>Offense</i>	<i>Penalty</i>
Robt. A. West, 791 Mt. Prospect St., Newark	Illegal poss. bass	\$20
Alan Wilson, Box 84, Kingston Rd., Lake Parsippany	Fish no license	20
Joseph Siciliano, 40 Leroy Pl., Red Bank	Fish no license	20
Samuel Rodriguez, 645 Belgrove Dr., Kearny	Firearm on Sunday	20
G. Wallace Croatman, 73 Grove St., Montclair	Fish no license	20
Samuel K. Cardone, 397 Stegman Pky., Jersey City	Fish no license	20
Michael Parise, 372 Parker St., Newark	Fish no license	20
Frank Sinclair, Jr., 254 Duer St., N. Plainfield	Fish no license	20
Louis Charles, 237 N. 11th St., Newark	Fish no license	20
Geo. Williamson, 15 Race Track Rd., E. Brunswick	Fish closed season	20
Karoly Horvath, Columbus Apts., Newark	Fish no license	20
Anthony Peterpaul, 1275 Gurd Avenue, Hillside	Discharge firearm from twp. road	20
Hubert Mason, Hammonton Rd., Lower Bank	Illegal poss. deer	100
Albert Roach, 3731 C. Herbert Avenue, Pennsauken	Fish no license	20
Wayne L. Creamer, 342 Haddon Avenue, Westmont	Fish no license	20
Frank Melnick, 1408 Hance Bridge Rd., Millville	Illegal poss. striped bass	20
John Smorz, Jr., 24 Jackson St., Paterson	Angle closed waters	20
P. McCabe, 602 - 4th Avenue, Asbury Park	Fish no license	20
John Adamo, 59 Prospect St., Lodi	Fish no license	20
Wm. L. Jones, 65 Euclid Avenue, Hackensack	Fish no license	20
John Glasson, 351 Liberty Avenue, Jersey City	Fish no license	20
George Farrell, Coxes Lane, West Creek	Illegal poss. deer	100
Alexander Pappas, Coxes Lane, West Creek	Illegal poss. deer	100
Henry Bystrack, 59 Harvey Drive, Summit	Fish no license	20
Annie Mae Byrd, 229 N. Wanamaker St., Phila., Pa.	Fish no license	20
James Reilly, 189 - 4th Avenue, Hawthorne	Angle closed waters	20
James Dougherty, 57 Main St., Apt. 4, Bloomingdale	Angle closed waters	20
John Panicci, Jr., 550 Market St., E. Paterson	Angle closed waters	20
Walter Fritz, 5 Crooks Avenue, Paterson	Angle closed waters	20
Benj. Beebe, 99 Cooney Avenue, Trenton	Fish closed waters	20
Thomas Derr, 78 Hobart Avenue, Trenton	Fish closed waters	20
Edward Vanisko, 16 Elm Avenue, Bordentown	Fish closed waters	20
Henry Beaty, 40 Sharidan Avenue, Trenton	Fish closed waters	20
Wm. Baylor, 26 W. Church St., Washington	Fish with bait in fly water	20
Wm. Nelson, Aura Willow Grove Rd., Newfield	Fish no license	20
Walter Strauss, 4643 Tacony St., Phila., Pa.	Fish no license	20
John Augustine, 4613 Tacony St., Phila., Pa.	Fish no license	20
Charles Bakley, 285 Albett Village, Camden	Fish no license	20
Thomas W. Stokes, 422 N. 4th St., Moultrie, Ga.	Fish no license	20
George Kanefsky, 7946 Rugby St., Phila., Pa.	Fish no license	20
Stanley Modzen, 26 McArthur Avenue, Sayreville	Poss. 1 cardinal	20
Alfred Blackwood, 261 Orange St., Newark	Fish no license	20
Martin Ruppert, 7 Fairmont Avenue, Newark	Angle closed waters	20
Albert Schoch, 12 Revere Avenue, Maplewood	Angle closed waters	20
Clarence Wosley, 136 Orient Avenue, Jersey City	Fish no license	20
Robt. Harris, 406 W. 5th St., Newark	Fish no license	20
James M. Taylor, U.S. Naval Air Sta., Quonset Pt., R.I.	Fish closed waters	20
Sam Valentini, 429 Wash. St., Orange	Fish no license	20
Robt. Arnold, 225 Wash. St., Orange	Fish no license	20
Thomas Kreckie, 85 Kuna Terr., Irvington	Fish closed season	20

<i>Defendant</i>	<i>Offense</i>	<i>Penalty</i>
Ken Burness, 731 Soll St., Newark	Bait in fly stretch	20
Anna Igomirello, 101 Park Drive, Kenilworth	Bait in fly stretch	20
Charles Tice, 30 Charles St., Livingston	Bait in fly stretch	20
Richard Dunn, 144 Hillside Avenue, Livingston	Bait in fly stretch	20
Vito Manderrichio, 63 Main St., Millburn	Illegal poss. striped bass	20
Nat Galletta, Jr., 1058 E. 26th St., Paterson	Fish no license	20
Mario Weissenburger, 212 Clifton Avenue, Lakewood	Fish no license	20
Kenneth Newsome, 8 Fort Avenue, New Egypt	Fish no license	20
Larry Read, R.D. 1, Columbia	Fish closed waters	20
Gordon W. Bird, 431 Sharp St., Hackettstown	Loaded gun in auto	20
Walter Szatkowski, 1442 S. 10th St., Camden	Fish no license	20
Mose Howell, 2132 N. 8th St., Phila., Pa.	Fish no license	20
Nathan Mayo, 817 Dame St., Phila., Pa.	Fish no license	20
Seaway Lines, Inc., 13 Meadow Rd., Old Bridge	Pollution	500
Alfonz Fecsik, 285 Franklin Rd., New Brunswick	Fish closed waters	20
Lee Duckworth, 44 Sked St., Pennington	Fish no license	20
Donald Merrill, 10 Roy Avenue, Bloomingdale	Fish no license	20
Daniel Massdin, 1442 N. 17th St., Phila., Pa.	Fish no license	20
Edwin Brady, 385 Harristown Rd., Glen Rock	Angle closed waters	20
Albert Dee McClure, 1108 Green St., Norristown, Pa.	Fish no license	20
Jerry W. Pinnix, 4 Woodland Place, Pompton Plains	Illegal missile	100
Howard Kriger, 174 So. Main St., Wharton	Angle closed waters	20
Allen Lewis, 4 Woodland Pl., Pompton Plains	Illegal missile	100
Robt. Lee Morton, 220 Atl. Avenue, Manasquan	Fish no license	20
John A. Bell, 2357 N. 13th St., Phila., Pa.	False information	20
George Kyle, 27 Oswego Avenue, Oakland	Angle closed waters	20
Jury Darkin, Pleasant Mills Rd., Elwood	Fish no license	20
James Turner, Beebe Run Rd., Bridgeton	Fish no license	20
Harry P. Johnson, 120 Irving Ave., Bridgeton	Fish no license	20
Wm. R. Kuhlman, 41 Knox Blvd., Marlton	False information	20
		lic. rev.
Frank Miley, Jr., 3829 Haverford Avenue, Phila, Pa.	Fish no license	20
Edward N. Regler, 623 Pine St., Camden	Fish no license	20
Thomas Thompson, 402 - 32nd St., Union City	Fish no license	20
Cam. H. Pearson, 314 Lida St., Trenton	Procure lic. wrongfully	100
James Hammond, 406 - 15th Avenue, Newark	Alter fishing license	20
James Hammond, 406 - 15th Avenue, Newark	Fish no license	20
Duncan H. Looney, 514 Birch Avenue, Westfield	Fish no license	20
Thomas E. Carter, 125 Lakeside Tr., W. Butler	Fish no license	20
Geo. Gregory, 423 Crosby Avenue, Paterson	Angle closed waters	20
Edward F. Funk, 45 Harrison Avenue, Garfield	Angle closed waters	20
Aladar Lissy, 133 - 3rd St., Passaic	Angle closed waters	20
Martin Alpert, 167 Shephard Avenue, Newark	Fish no license	20
Frank Howard, 1060 Bergen St., Newark	Fish no license	20
Hector Gonzalez, 326 E. 102 St., New York, N. Y.	Fish no license	20
John Ryan, 176 Newton St., Newark	Angle closed waters	20
Alexander Warner, 644 Newark Avenue, Jersey City	Angle closed waters	20
Edward Cheslock, 79 Pearl St., Paterson	Angle closed waters	20
John P. Clifford, 10 Genesse Ave., Paterson	Angle closed waters	20

Please give your CORRECT POST OFFICE ADDRESS
for change of address, new subscriptions, and renewals.

If your post office address is different than your municipal address,
please make certain that you send us your post office address.

For Christmas Gifts — New Jersey Outdoors

We'll send a card with your compliments and best wishes

NEW JERSEY OUTDOORS, 230 W. State St., Trenton 25, N. J.

Please enter my subscription (at \$1.00 per year) for 1 year 2 years
 3 YEARS FOR \$2.50 new renewal

Name

Street

Post Office Zone State

Please send a gift subscription (at \$1.00 per year) for 1 year 2 years
 3 YEARS FOR \$2.50 new renewal

To:
Name

Street

Post Office Zone State

From:

NEW JERSEY OUTDOORS, 230 W. State St., Trenton 25, N. J.

Please send a gift subscription (at \$1.00 per year) for 1 year 2 years
 3 YEARS FOR \$2.50 new renewal

To:
Name

Street

Post Office Zone State

From:

NEW JERSEY OUTDOORS, 230 W. State St., Trenton 25, N. J.

Please send a gift subscription (at \$1.00 per year) for 1 year 2 years
 3 YEARS FOR \$2.50 new renewal

To:
Name

Street

Post Office Zone State

From:

TEAR HERE

Hunting

for a

Christmas Gift

for every
month
in the year

it's **NEW JERSEY *Outdoors***

*for a greater appreciation
of our outdoor life*



NEW JERSEY OUTDOORS, 230 W. State St., Trenton 25, N. J.

Please send a gift subscription (at \$1.00 per year) for

3 YEARS FOR \$2.50

1 year 2 years
 new renewal

To:

Name _____

Street _____

Post Office _____ Zone _____ State _____

From: _____

CUT HERE

NEW JERSEY OUTDOORS

230 West State Street

TRENTON 25, N. J.

Form 3579 Requested

*Second class postage
paid at Trenton, N.J.,
and additional office.*

support new jersey's



BOND ISSUE

021