

DEPARTMENT OF HUMAN SERVICES
INTER-OFFICE COMMUNICATION

974.905
044.4
c.2

DATE February 23, 1996

TO William Waldman
Commissioner

FROM Karen Highsmith
Acting Director



SUBJECT CURRENT PROGRAM STATISTICS

Attached please find CURRENT PROGRAM STATISTICS, including the FDP Statistical Summary for December 1995. Also included are explanatory notes for the various data elements.

Should you have any questions, please feel free to call me.

KH:kas:c

Attachments

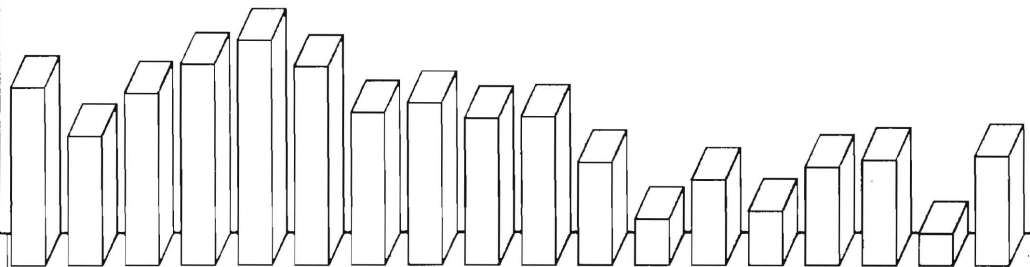
c Guhl
Grant
Tencza

*State of New Jersey
Department of Human Services
Division of Family Development*

CURRENT PROGRAM STATISTICS

December 1995

Karen Highsmith, Acting Director



State of New Jersey
Department of Human Services
Division of Family Development

CURRENT PROGRAM STATISTICS
December 1995

TABLE OF CONTENTS

	Page
Highlights of Current Program Statistics	1-3
Statistics by County, December 1995	
Table 1 AFDC	4
Graph 1 Current AFDC Families.....	5
Table 2 Food Stamp Program.....	6
Graph 2 Current Food Stamp Households/Persons.....	7
Table 3 Emergency Assistance Program.....	8
Graph 3 Current Families Receiving Emergency Assistance.....	9
Table 4 Family Development Program	10
State Summary, 1993 - 1995	
Table 5 AFDC, December 1993 - December 1995	12
Graph 4 Families Receiving AFDC, 12/93-12/95.....	12
Table 6 Food Stamp Program, December 1993 - December 1995	13
Graph 5 Food Stamp Households, 12/93-12/95	14
Graph 6 Food Stamp Recipients, 12/93-12/95.....	15
Table 7 Emergency Assistance Program, December 1993 - December 1995	16
Graph 7 AFDC Families Receiving Emergency Assistance 12/93-12/95	17
Table 8 JOBS/FDP Participation Rates, by County and Statewide, July 1994 - December 1995	18
Graph 8 JOBS/FDP Participation Rates, 7/94-12/95	19
Table 9 General Assistance, May 1993 -May 1995.....	20
Graph 9 General Assistance Recipients 5/93 -5/95	21
Table 10 Child Support and Paternity Fiscal Years 1994-1996	22
Explanatory Notes	23-24
Supplement	
Table 11 General Assistance Recipients by County and Municipality, June 1995.....	25
Table 12 Child Support and Paternity Cases Remaining Open, Quarter Ending December 1995	26

Highlights of Current Program Statistics

AFDC (Tables 1 and 5, Graphs 1 and 4)

117,000 eligible families in New Jersey were receiving AFDC as of the end of December 1995:

- Less than **105,300** single head of household families (Regular AFDC, C segment).
- Among two-parent families, about the same number, under **3200**, of Unemployed Parent families (F Segment) and State AFDC families (N Segment).
- Almost **5300** Medicaid Only families.
- The largest numbers of families by county: Essex with **29,700**, Hudson with **18,400**, and Camden County with **13,400**. (52 percent of all AFDC families)
- Other counties ranged from under **200** families in Hunterdon to **7,500** in Passaic County.

There were about 100 fewer eligible families in December than in November 1995, with a total decline of nearly 8000 since the May/June 1994 peak of 124,600.

- There were **150** fewer C segment families in December 1995 than in November, and **6500** less than the peak of **111,800** in June 1994.
- F segment families declined from over **4500** in May 1994 to less than **3200** by November 1995. There was virtually no change from November to December.
- State AFDC (N segment) grew from about **3000** families in December 1993 to almost **3500** by June 1994, but declined slowly to less than **3200** by December 1995.
- Medicaid Only families remained at or below **5000** in 1993 and 1994, but averaged nearly **5200** for 1995.

FOOD STAMP PROGRAM (Tables 2 and 6, Graphs 2, 5, and 6)

At the end of November 1995, about 220,000 households were participating in the Food Stamp Program:

- **110,000** AFDC households with **344,000** persons.
- **110,200** Other Low Income households with **167,800** persons.
- **48 percent** were in Essex (**55,300**), Hudson (**29,600**) and Camden (**21,500**) Counties.
- Food Stamp households included about **511,800** persons, **244,000** adults and **267,800** children.
- In seven counties (Bergen, Hunterdon, Monmouth, Morris, Somerset, Sussex, and Warren) the number of adults exceeded the number of children in Food Stamp households.

Food Stamp households in New Jersey remained close to 215,000 families between August 1993 and February 1994, and jumped to about 222,000 families in March 1994. The number has remained between 220,000 and 222,000 since then, except for a peak in March 1995 of almost 225,000.

- The numbers of AFDC(FS) households and Other Low Income households have converged, with the latter surpassing the former for the first time in November 1995. AFDC(FS) households declined from nearly **116,000** in May 1994 to less than **110,000** by December 1995. Other Low Income households averaged **100,400** in 1993, and exceeded **110,000** during the last three months of 1995.
- Total Recipients peaked at almost **531,000** in March 1994, and then again at **529,500** in March 1995. The level declined to less than **512,000** by December 1995.
- The number of Recipient Adults, which peaked at **250,000** in March 1995, has remained around **245,000** for most of 1995. This is about the same as 1994 but more than 1993 when there were less than **240,000** recipient adults.
- The number of Recipient Children which peaked at almost **283,000** in March 1994 and almost **280,000** in March 1995, declined to less than **268,000** by December 1995.

EMERGENCY ASSISTANCE (Tables 3 and 7, Graphs 3 and 7)

In December 1995 4,891 eligible AFDC families received Emergency Assistance (EA) payments in New Jersey:

- **1864** families with Temporary Rental Assistance (TRA)
- **377** motel placements
- **369** emergency shelter placements
- All other AFDC-EA accounted for **2,281** families, including back rent, back utilities, security deposits, furnishings, clothing and food allowance, or transitional housing.
- **1389** families in Essex County received EA, with **707** in Middlesex, **508** in Passaic and **448** in Bergen. All other counties had between **12** and **352**, with ten counties **under 100**.

In the past two years the highest numbers of families receiving EA were in March and May of 1994, each with close to 8000. The number has declined since, and dropped below 5000 in November and December 1995.

- The number of families provided TRA each month has declined steadily from about **3600** in early 1994, and has been below **2000** since September 1995.
- Emergency Shelter and Motel Housing have each been provided to **under 500** families each month, except for three months in 1994 and one in 1995 when Motel Housing **exceeded 500**.
- An average of **3200** families received Other EA in 1994 and **2600** in 1995.

JOBS/FDP PARTICIPATION RATES (Table 8, Graph 8)

Statewide participation in JOBS/FDP in December 1995 was 26.4 percent, about one percent below the previous two months, but still higher than the earlier high of 25.7 percent in May 1995. The 1995 pattern continues to exhibit an overall upward shift. December 1995 rate is five percent higher than a year ago.

- Since July 1994, most counties have shown upward movement in participation rates. Most counties tend to show small fluctuations, with Burlington, Cape May, Essex, Hudson, Middlesex, Ocean, and Passaic having clear upward movement. Bergen, Camden, Gloucester, Mercer, Monmouth and Union have had minimal upward movement. Atlantic, and Cumberland have had large fluctuations, but maintained very high participation rates. While Sussex Warren and Salem also experienced fluctuations, their high rates have not been as sustained. Hunterdon and Somerset jumped to higher levels in late 1994 or early 1995. Morris increased markedly in 1995, to the highest rates in New Jersey.
- Camden, Cape May and Essex remained between 10 and 20 percent. Burlington, Hunterdon, Middlesex, and Passaic were between 30 and 40 percent; Salem and Warren were slightly above 40 percent; Atlantic, Cumberland, Somerset and Sussex exceeded 50 percent. Morris again exceeded 70 percent as in the summer of 1995. The other seven counties were between 20 and 30 percent. Thirteen counties had lower rates in December than November.

GENERAL ASSISTANCE (Table 9, Graph 9)

For the period June 1993 through June 1995 (the latest available information), the number of GA recipients peaked at 38,100 in March 1994. The level stayed around 35,000 from September through December 1994. January through April 1995 remained below 36,000, while May and June dropped below 34,000.

- The number of employable recipients peaked in March 1994 (26,400) and has been declining since then. The level remained slightly over 23,000 from September through December 1994. After increasing to over 24,000 in January 1995, the level resumed declining to under 21,600 by June.
- Unemployable GA recipients have remained within a relatively narrow range. The level remained between 11,000 and 11,700 through April 1994, and hovered around 12,000 through November 1994. From December 1994 through June 1995, there were between 11,300 and 12,100 Unemployable recipients.

CHILD SUPPORT AND PATERNITY COLLECTIONS (Table 10)

Total collections of the Child Support and Paternity Program grew from \$515 million to \$574 million from SFY1994 to SFY1995, an increase of more than 11 percent. For the first six months of SFY 1996 (July through December 1995) collections were about two percent above a year ago.

- Total AFDC/Foster Care collections increased from more than \$92 million to about \$95 million, or 3.1 percent, between SFY 1994 and SFY 1995. For the last six months the increase was also more than three percent compared to a year earlier.
- Non-AFDC collections grew from \$423 million to almost \$479 million, or 13.2 percent, between SFY 1994 and SFY 1995, while increasing in the last six months by less than two percent from a year ago.

New Jersey Department of Human Services
Division of Family Development

TABLE 1

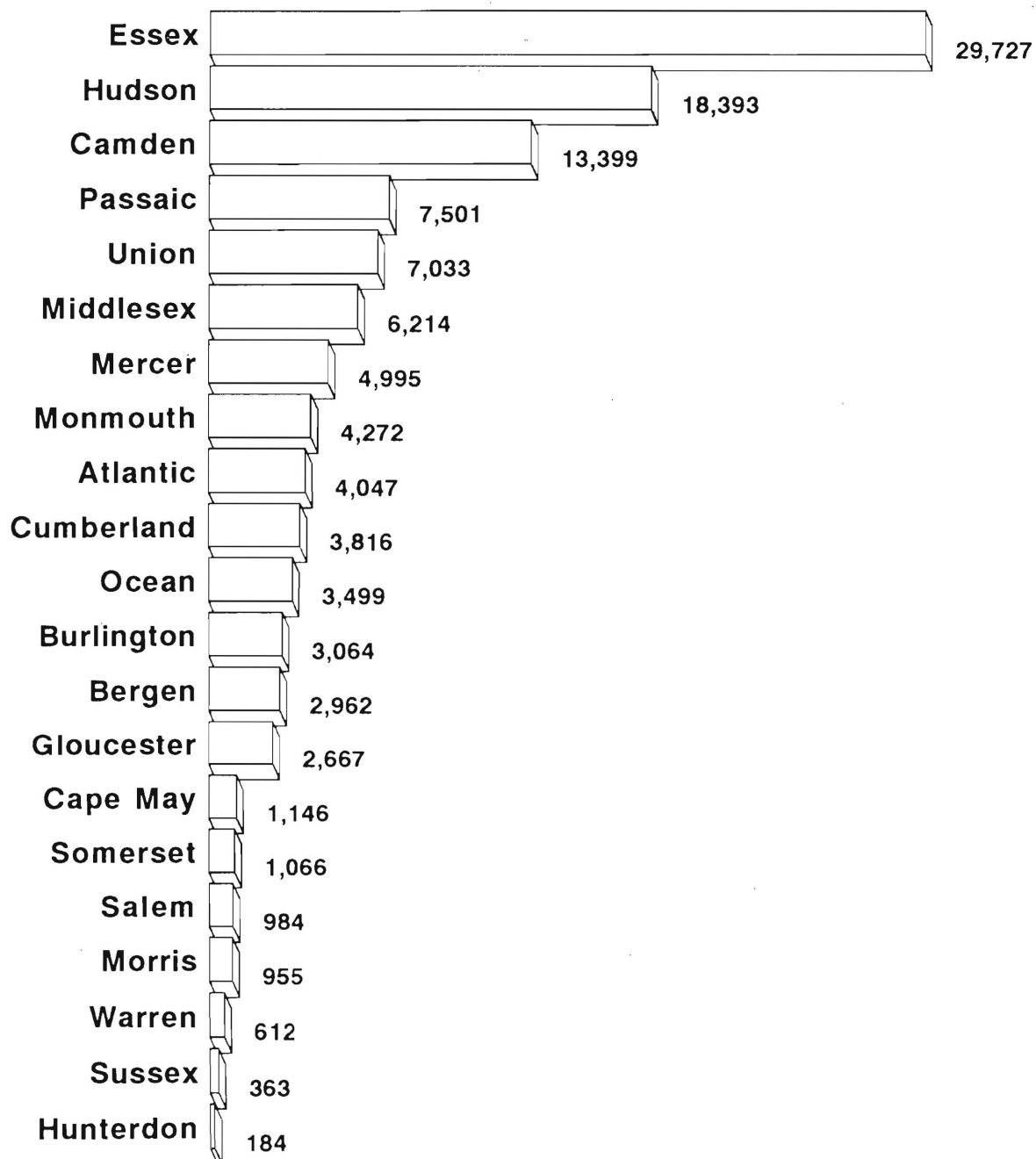
AFDC Program

**NUMBER OF APPLICATIONS AND TERMINATIONS DURING REPORT MONTH, AND
NUMBER OF ELIGIBLE FAMILIES RECEIVING AFDC AT END OF REPORT MONTH**

December 1995

County	Applications Approved	Terminations	Regular AFDC (C Segment)	Unemployed Parents (F)	State AFDC (N)	Medicaid Only	TOTAL AFDC
Atlantic	254	273	3,706	126	69	146	4,047
Bergen	158	143	2,612	137	122	91	2,962
Burlington	221	212	2,691	82	81	210	3,064
Camden	700	721	11,681	552	381	785	13,399
Cape May	158	82	933	72	72	69	1,146
Cumberland	283	237	3,236	179	181	220	3,816
Essex	877	878	28,294	439	239	755	29,727
Gloucester	200	161	2,299	118	80	170	2,667
Hudson	522	615	16,474	341	635	943	18,393
Hunterdon	18	28	153	4	11	16	184
Mercer	421	427	4,483	88	99	325	4,995
Middlesex	346	400	5,187	229	285	513	6,214
Monmouth	234	257	3,954	86	176	56	4,272
Morris	57	65	846	30	34	45	955
Ocean	199	251	2,956	170	155	218	3,499
Passaic	321	368	6,868	276	279	78	7,501
Salem	104	91	878	16	21	69	984
Somerset	110	112	852	43	35	136	1,066
Sussex	26	34	301	13	6	43	363
Union	336	376	6,370	133	198	332	7,033
Warren	37	44	513	31	30	38	612
NJ TOTAL	5,582	5,775	105,287	3,165	3,189	5,258	116,899

Data Sources: Data is derived from NJ Division of Family Development's FAMIS report # FF-012.

GRAPH 1**Current AFDC Families
December 1995, By County**

New Jersey Department of Human Services
Division of Family Development

TABLE 2

FOOD STAMP Program

NUMBER OF ATP'S ISSUED TO HOUSEHOLDS, PERSONS, ADULTS AND CHILDREN AT THE END OF THE REPORT MONTH

December 1995

County	HOUSEHOLDS			PERSONS				
	AFDC	Other low income	TOTAL	TOTAL	AFDC	Other low income	Adults	Children
Atlantic	3,817	4,773	8,590	18,919	12,277	6,642	9,315	9,604
Bergen	2,697	5,643	8,340	16,654	7,992	8,662	9,681	6,973
Burlington	2,740	2,965	5,705	13,205	8,271	4,934	6,411	6,794
Camden	12,717	8,813	21,530	54,109	41,322	12,787	24,265	29,844
Cape May	1,172	1,317	2,489	6,202	3,893	2,309	3,039	3,163
Cumberland	3,705	2,745	6,450	16,799	12,376	4,423	7,662	9,137
Essex	29,047	26,219	55,266	127,359	89,752	37,607	59,235	68,124
Gloucester	2,273	1,910	4,183	10,200	7,007	3,193	4,818	5,382
Hudson	17,446	12,199	29,645	71,733	52,915	18,818	32,314	39,419
Hunterdon	133	354	487	973	395	578	557	416
Mercer	4,556	4,486	9,042	19,801	14,002	5,799	9,406	10,395
Middlesex	5,488	5,849	11,337	25,411	16,498	8,913	12,587	12,824
Monmouth	3,998	6,205	10,203	22,110	12,636	9,474	11,378	10,732
Morris	845	1,817	2,662	5,351	2,475	2,876	3,087	2,264
Ocean	3,436	4,503	7,939	19,817	11,186	8,631	9,390	10,427
Passaic	7,062	9,368	16,430	38,158	23,159	14,999	18,406	19,752
Salem	932	804	1,736	4,308	3,039	1,269	1,965	2,343
Somerset	988	1,767	2,755	5,436	2,816	2,620	2,960	2,476
Sussex	312	650	962	2,229	967	1,262	1,195	1,034
Union	6,059	6,741	12,800	29,271	19,206	10,065	14,364	14,907
Warren	569	1,027	1,596	3,682	1,771	1,911	1,930	1,752
NJ TOTAL	109,992	110,155	220,147	511,727	343,955	167,772	243,965	267,762

ATP - Authorization to Participate, may include some duplication

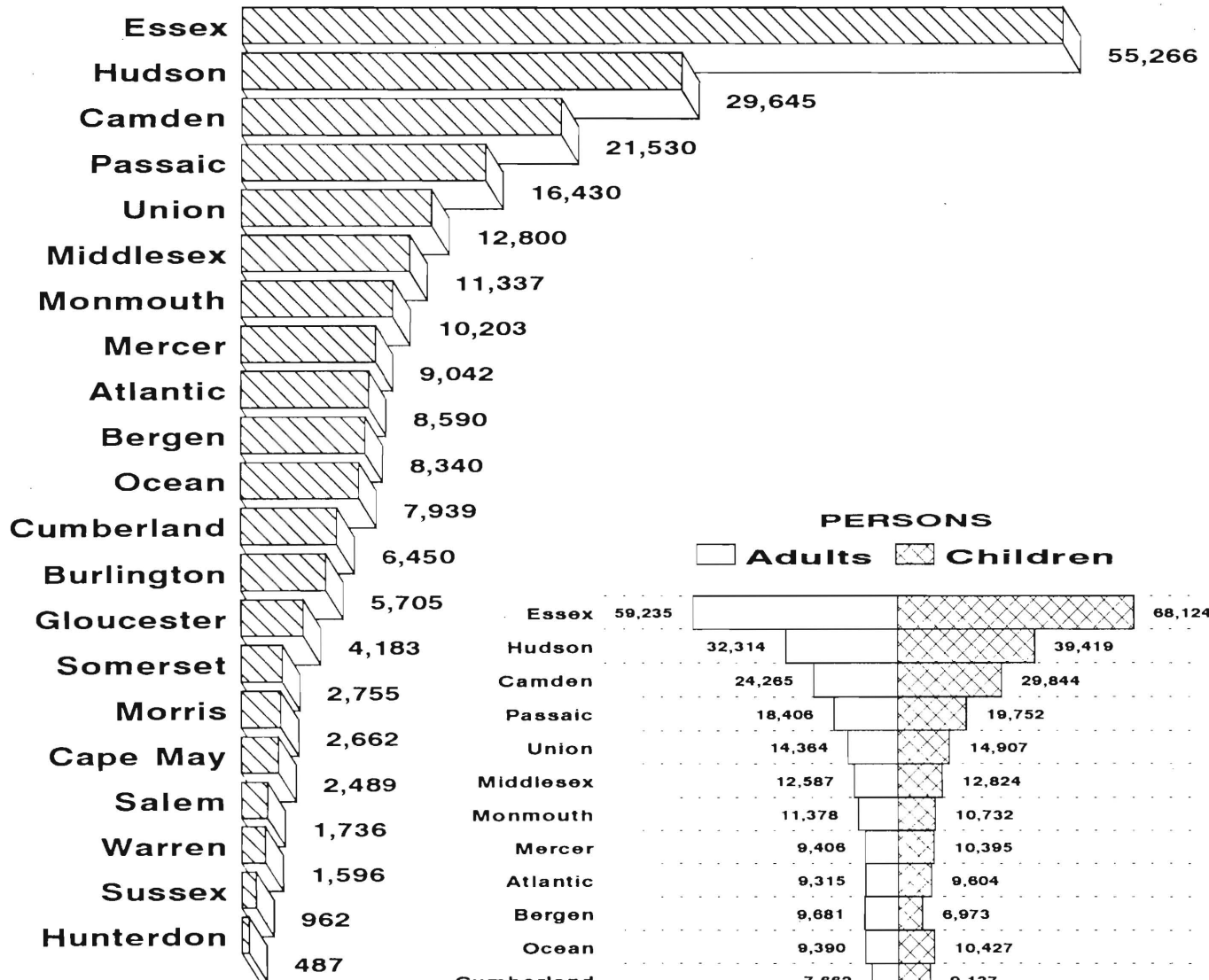
Data Sources: Data is derived from NJ Division of Family Development's FAMIS report # FB-160.

GRAPH 2

Food Stamp Households

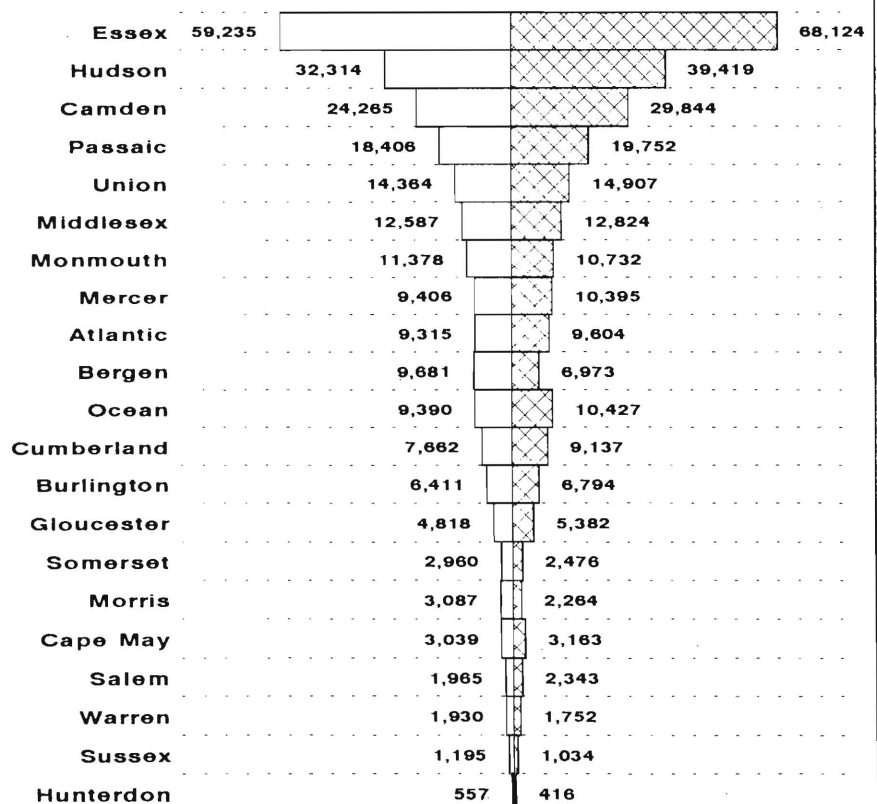
December 1995, By County

 HOUSEHOLDS



PERSONS

 Adults  Children



New Jersey Department of Human Services
Division of Family Development

TABLE 3

EMERGENCY ASSISTANCE Program for AFDC Recipients

**NUMBER OF ELIGIBLE FAMILIES RECEIVING EMERGENCY ASSISTANCE PAYMENTS
(UNDUPLICATED CASES)**

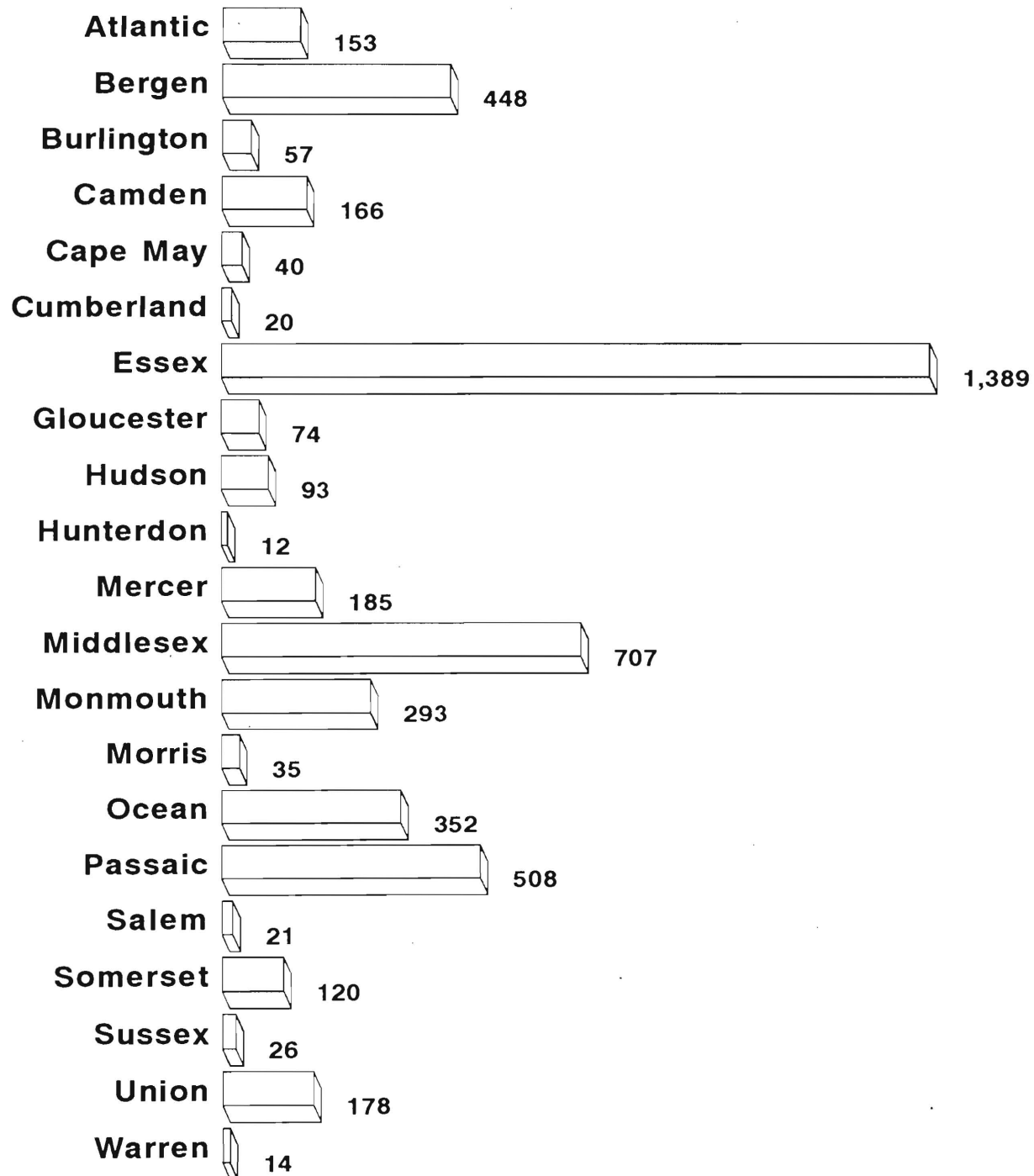
December 1995

County	Total families receiving EA	Temporary rental assist.	Motel Housing	Emergency Shelter	Other AFDC-EA
ATLANTIC	153	52	35	13	53
BERGEN	448	224	37	31	156
BURLINGTON	57	13	0	30	14
CAMDEN	166	68	3	17	78
CAPE MAY	40	2	7	1	30
CUMBERLAND	20	0	0	11	9
ESSEX	1,389	670	19	96	604
GLOUCESTER	74	25	3	23	23
HUDSON	93	23	1	11	58
HUNTERDON	12	5	3	1	3
MERCER	185	79	22	3	81
MIDDLESEX	707	397	29	28	253
MONMOUTH	293	107	57	4	125
MORRIS	35	0	0	18	17
OCEAN	352	141	106	3	102
PASSAIC	508	0	14	20	474
SALEM	21	7	7	1	6
SOMERSET	120	17	16	23	64
SUSSEX	26	5	6	5	10
UNION	178	29	5	27	117
WARREN	14	0	7	3	4
NJ TOTAL	4,891	1,864	377	369	2,281

Data Sources: Data is derived from NJ Division of Family Development FAMIS Report #FM-457.

GRAPH 3

Current Families Receiving Emergency Assistance December 1995, By County



NEW JERSEY DEPARTMENT OF HUMAN SERVICES
DIVISION OF FAMILY DEVELOPMENT

TABLE 4
FAMILY DEVELOPMENT PROGRAM
STATISTICAL SUMMARY

COUNTY	SNAPSHOT OF ACTIVITY AS OF DECEMBER 1995				ACTIVITY FOR MONTH OF DECEMBER 1995					
	TOTAL	EMPLOYMENT DIRECTED			PARTIC IN EDAs &		PARTIC	# EMPL	# CLSD	POST
	NONEXMT	ACTIVITIES(1)			REC SUPPORT SERVICES		W/ 1st	THIS	ON FAMIS	AFDC
	JOBS/FDP	TRAIN-	EDUCA-	JOB		CHILD	C M	MONTH &	RE:	& REC
	RECI- PIENTS	ING	TION	SEARCH	TREs	CARE	INTV	STILL REC AFDC	EARNGS(2)	CH CARE
ATLANTIC	1,595	285	288	68	320	263	185	55	98	167
BERGEN	1,761	196	109	25	190	136	33	13	42	72
BURLINGTON	1,516	272	175	54	349	209	69	34	54	152
CAMDEN	8,119	415	477	53	864	528	207	35	130	243
CAPE MAY	632	67	24	40	57	21	51	13	25	2
CUMBERLAND	1,600	283	314	36	563	297	187	54	62	115
ESSEX	17,362	1,272	1,367	183	2,249	1,527	290	35	176	120
GLOUCESTER	1,154	206	113	28	355	103	40	5	35	63
HUDSON	11,890	964	1,585	62	2,119	947	248	28	131	187
HUNTERDON	92	6	16	2	10	15	12	3	7	13
MERCER	2,935	175	277	52	222	207	31	18	56	114
MIDDLESEX	3,487	548	326	95	493	204	191	65	99	98
MONMOUTH	2,586	247	254	62	411	281	63	19	76	147
MORRIS	467	138	50	46	101	88	89	11	33	27
OCEAN	2,077	273	182	102	185	161	116	39	86	114
PASSAIC	3,942	822	387	40	966	382	147	29	97	146
SALEM	401	75	91	2	100	100	15	9	14	42
SOMERSET	547	78	75	16	97	110	20	19	21	41
SUSSEX	217	43	56	44	52	42	24	8	15	30
UNION	3,938	326	398	82	571	242	115	16	80	107
WARREN	402	34	61	31	27	24	6	11	11	19
STATE	66,720	6,725	6,625	1,123	10,301	5,887	2,139	519	1,348	2,019

(1) – The number of participants receiving support services may occasionally exceed the number actively participating in EDAs. This can result from extended assessment or evaluation activities or, the issuance of bridge payments.

(2) – FAMIS file date 12/16/95

New Jersey Department of Human Services
Division of Family Development

TABLE 5

AFDC Program State Summary

**NUMBER OF APPLICATIONS AND TERMINATIONS DURING REPORT MONTH,
AND NUMBER OF ELIGIBLE FAMILIES RECEIVING AFDC AT END OF REPORT MONTH**

December 1993 through December 1995

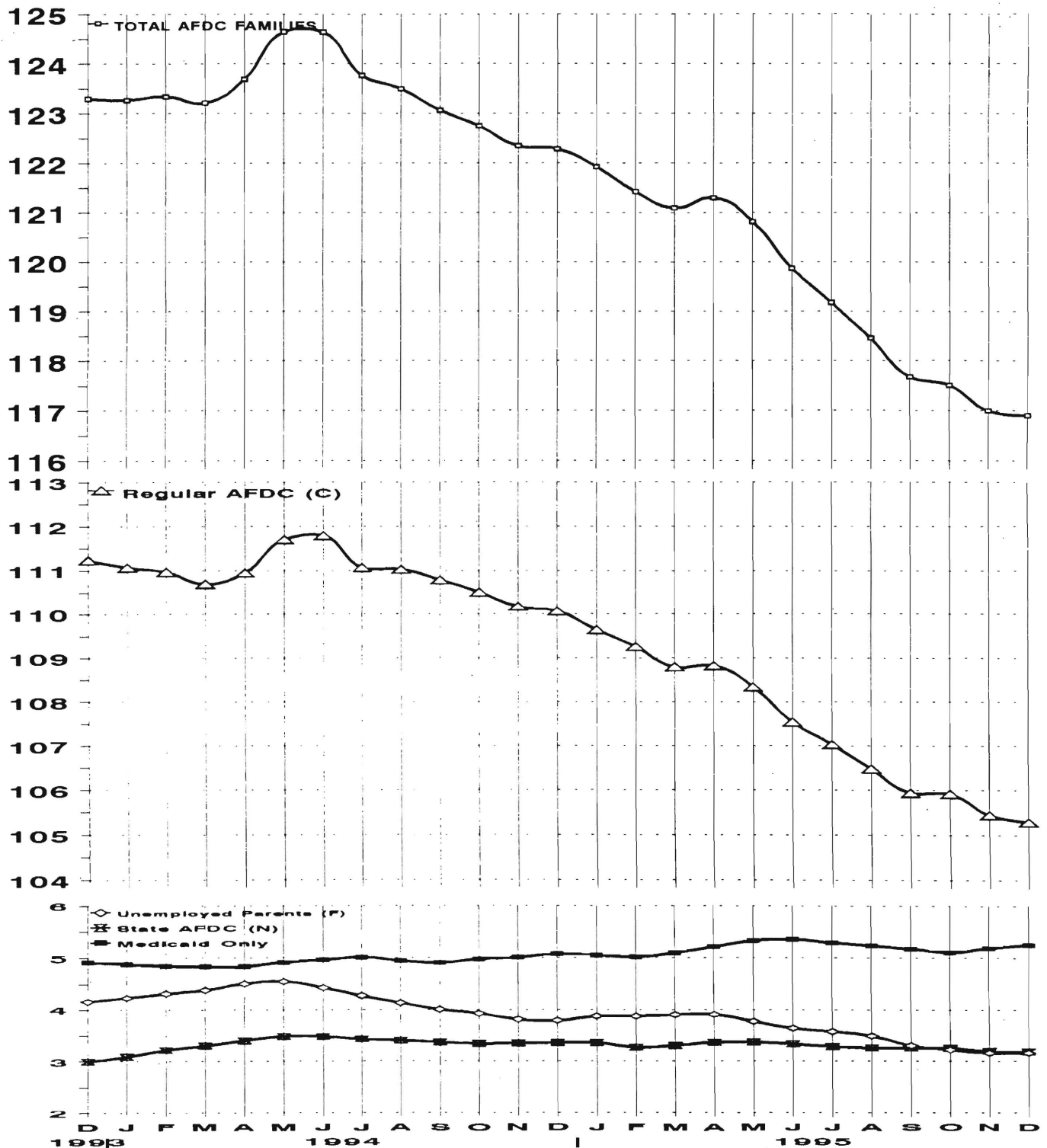
	Applications Approved	Termin- ations	Regular AFDC (C Segment)	Unemployed Parents (F)	State AFDC (N)	Medicaid Only	TOTAL AFDC
1993 Dec	5,590	5,462	111,231	4,152	2,997	4,915	123,295
AVERAGE (12 MONTHS)	5,760	5,688	110,942	4,365	2,860	5,012	123,178
1994 Jan	5,452	5,349	111,067	4,232	3,085	4,881	123,265
Feb	5,449	5,518	110,964	4,314	3,214	4,844	123,336
Mar	5,693	5,893	110,699	4,383	3,301	4,831	123,214
Apr	6,284	5,997	110,951	4,506	3,399	4,834	123,690
May	7,094	6,188	111,700	4,549	3,483	4,913	124,645
Jun	5,758	5,742	111,787	4,423	3,477	4,953	124,640
Jul	5,117	5,898	111,064	4,266	3,428	5,007	123,765
Aug	6,435	6,827	111,025	4,128	3,401	4,940	123,494
Sep	6,266	6,754	110,790	4,007	3,369	4,900	123,066
Oct	6,592	6,950	110,517	3,927	3,340	4,966	122,750
Nov	6,344	6,796	110,181	3,814	3,350	5,002	122,347
Dec	5,682	5,890	110,070	3,789	3,360	5,065	122,284
AVERAGE	6,014	6,150	110,901	4,195	3,351	4,928	123,375
1995 Jan	5,583	5,944	109,645	3,875	3,358	5,045	121,923
Feb	5,964	6,515	109,261	3,878	3,270	5,016	121,425
Mar	5,810	6,221	108,800	3,903	3,305	5,088	121,096
Apr	7,096	7,086	108,822	3,907	3,365	5,209	121,303
May	5,288	5,784	108,343	3,773	3,369	5,328	120,813
Jun	5,558	6,458	107,541	3,639	3,336	5,358	119,874
Jul	5,977	6,781	107,028	3,574	3,286	5,293	119,181
Aug	5,547	6,294	106,475	3,489	3,260	5,239	118,463
Sep	5,922	6,647	105,943	3,303	3,260	5,175	117,681
Oct	7,062	7,359	105,917	3,224	3,257	5,110	117,508
Nov	6,083	6,660	105,445	3,164	3,199	5,189	116,997
Dec	5,582	5,775	105,287	3,165	3,189	5,258	116,899
AVERAGE	5,956	6,460	107,376	3,575	3,288	5,192	119,430

Data Sources: Data is derived from NJ Division of Family Development's FAMIS report # FF-012.

GRAPH 4

Eligible Families Receiving AFDC

December 1993 through December 1995
(Thousands of Families)



New Jersey Department of Human Services
Division of Family Development

TABLE 6

FOOD STAMP Program State Summary

NUMBER OF ATP'S ISSUED TO HOUSEHOLDS, PERSONS, ADULTS AND CHILDREN AT THE END OF THE REPORT MONTH

December 1993 through December 1995

	HOUSEHOLDS			TOTAL	TOTAL	PERSONS		
	AFDC	Other low income				AFDC	Other low income	Adults Children
1993 Dec	114,348	102,790	217,138	521,307	360,858	160,449	241,989	279,318
AVERAGE (12 MONTHS)	113,235	100,374	213,609	515,793	357,762	158,032	238,605	277,188
1994 Jan	113,984	102,590	216,574	519,549	359,422	160,127	241,575	277,974
Feb	113,804	102,843	216,647	519,760	359,227	160,533	241,993	277,767
Mar	115,730	106,160	221,890	530,892	365,132	165,760	248,219	282,673
Apr	115,661	106,454	222,115	530,591	365,241	165,350	248,331	282,260
May	115,874	106,611	222,485	530,595	364,941	165,654	248,420	282,175
Jun	115,737	106,683	222,420	529,514	364,394	165,120	248,099	281,415
Jul	115,172	105,717	220,889	526,075	362,520	163,555	246,142	279,933
Aug	114,809	106,115	220,924	524,659	361,106	163,553	246,052	278,607
Sep	114,177	105,972	220,149	521,945	358,849	163,096	244,835	277,110
Oct	114,039	106,903	220,942	522,406	358,010	164,396	245,676	276,730
Nov	114,251	107,577	221,828	524,090	358,582	165,508	246,659	277,431
Dec	114,232	107,467	221,699	523,825	358,446	165,379	246,517	277,308
AVERAGE	114,789	105,924	220,714	525,325	361,323	164,003	246,043	279,282
1995 Jan	113,691	107,493	221,184	522,125	356,763	165,362	245,837	276,288
Feb	113,830	108,421	222,251	524,344	357,419	166,925	247,107	277,237
Mar	114,339	110,279	224,618	529,456	359,404	170,052	249,994	279,462
Apr	113,588	108,991	222,579	524,102	356,717	167,385	247,367	276,735
May	113,125	109,171	222,296	522,173	355,099	167,074	246,949	275,224
Jun	112,827	109,198	222,025	521,084	354,211	166,873	246,557	274,527
Jul	111,635	107,978	219,613	515,478	350,378	165,100	243,727	271,751
Aug	111,415	109,603	221,018	516,618	349,372	167,246	245,110	271,508
Sep	110,760	109,154	219,914	513,517	347,126	166,391	243,723	269,794
Oct	110,697	110,268	220,965	514,598	346,519	168,079	244,911	269,687
Nov	110,630	110,763	221,393	514,823	346,034	168,789	245,455	269,368
Dec	109,992	110,155	220,147	511,727	343,955	167,772	243,965	267,762
AVERAGE	112,211	109,290	221,500	519,170	351,916	167,254	245,892	273,279

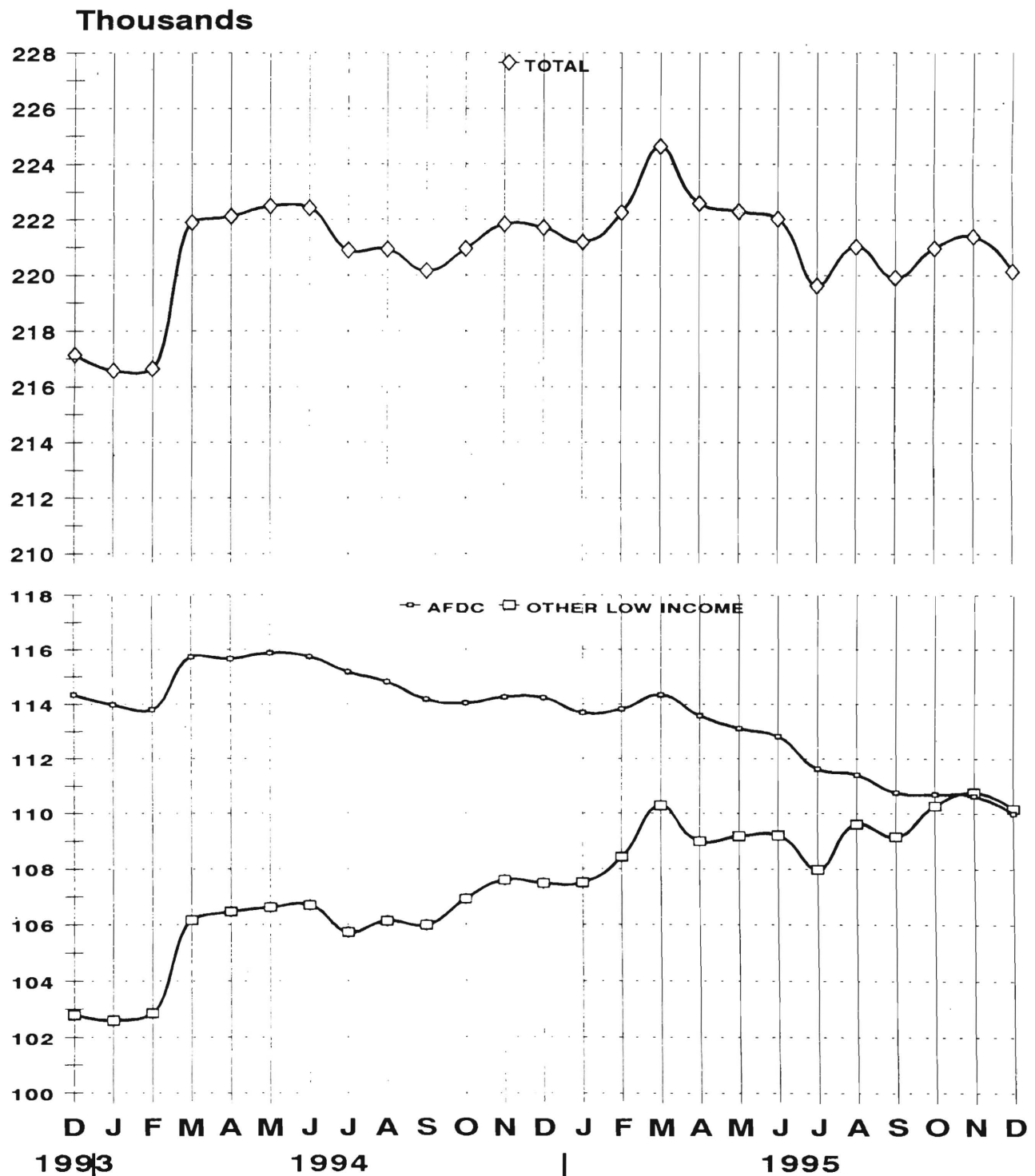
ATP - Authorization to Participate

Data Sources: Data is derived from NJ Division of Family Development's FAMIS report # FB-160.

GRAPH 5

Food Stamp Households

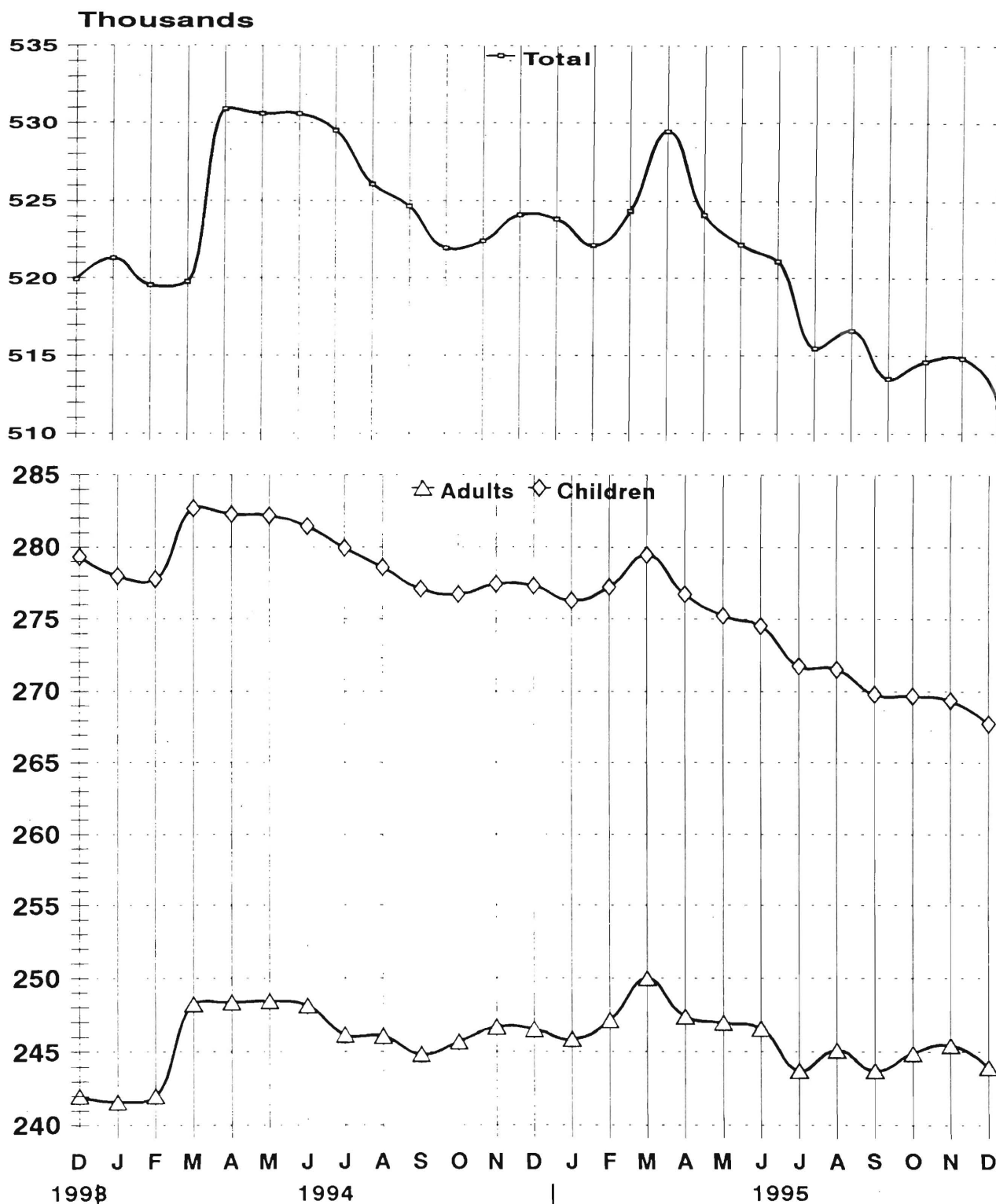
December 1993 through December 1995



GRAPH 6

Food Stamp Recipients

December 1993 through December 1995



New Jersey Department of Human Services
Division of Family Development

TABLE 7

EMERGENCY ASSISTANCE Program for AFDC Recipients

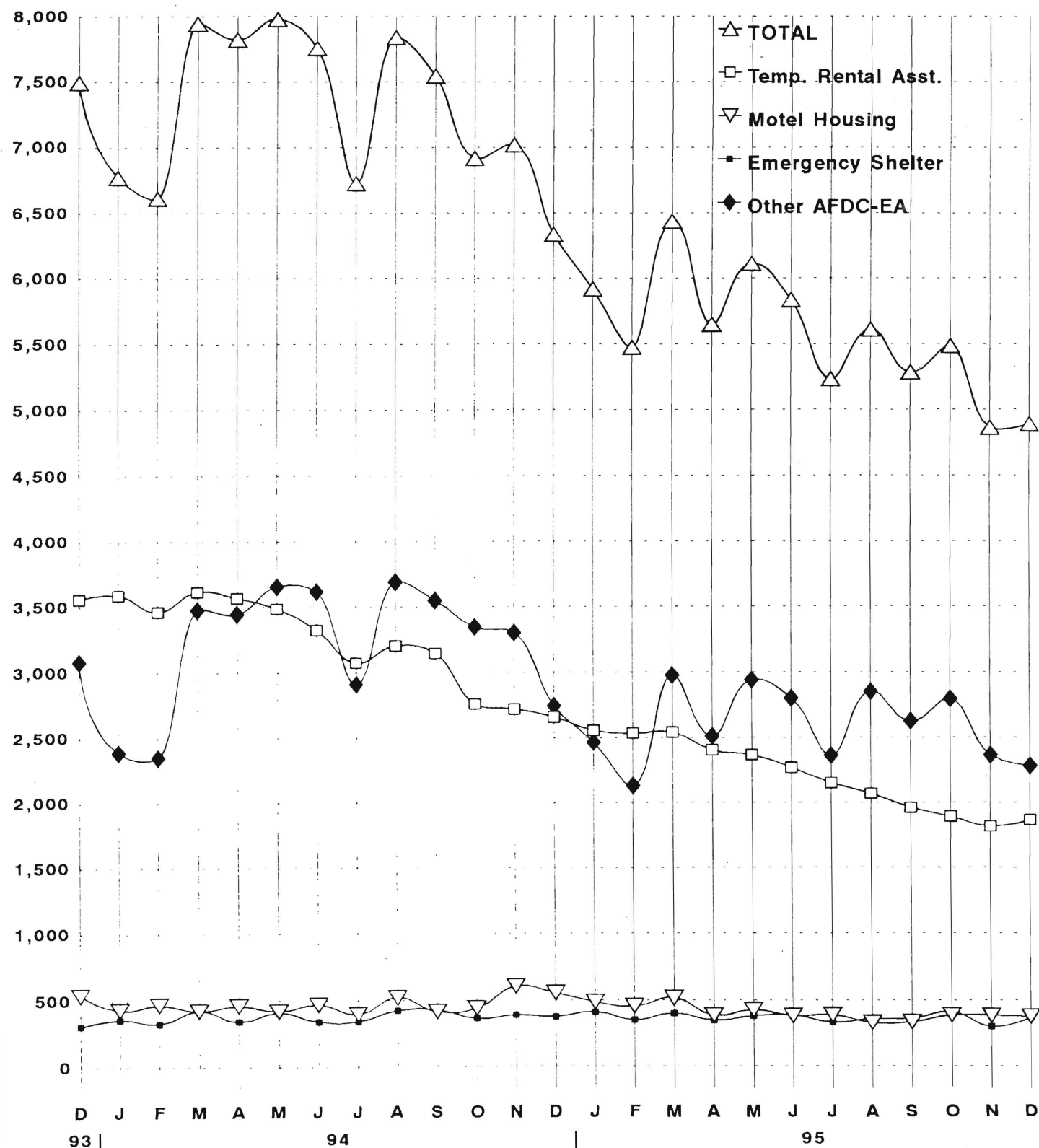
State Summary

**NUMBER OF ELIGIBLE FAMILIES RECEIVING EMERGENCY ASSISTANCE PAYMENTS
(UNDUPLICATED CASES)
DECEMBER 1993 through DECEMBER 1995**

	Total families receiving EA	Temporary rental assist.	Motel Housing	Emergency Shelter	Other AFDC-EA
1993 DEC	7,496	3,561	541	311	3,083
1994 JAN	6,771	3,590	432	362	2,387
FEB	6,613	3,465	469	331	2,348
MAR	7,942	3,616	425	424	3,477
APR	7,821	3,568	462	345	3,446
MAY	7,977	3,488	423	411	3,655
JUN	7,755	3,326	469	343	3,617
JUL	6,727	3,075	400	344	2,908
AUG	7,840	3,204	520	426	3,690
SEP	7,545	3,147	418	430	3,550
OCT	6,914	2,759	442	366	3,347
NOV	7,018	2,720	604	391	3,303
DEC	6,335	2,658	554	379	2,744
Average	7,272	3,218	468	379	3,206
1995 JAN	5,921	2,557	487	413	2,464
FEB	5,475	2,535	456	354	2,130
MAR	6,437	2,542	516	402	2,977
APR	5,651	2,402	387	351	2,511
MAY	6,111	2,364	427	381	2,939
JUN	5,837	2,268	382	387	2,800
JUL	5,233	2,149	389	334	2,361
AUG	5,611	2,068	331	362	2,850
SEP	5,284	1,958	336	364	2,626
OCT	5,483	1,891	388	410	2,794
NOV	4,865	1,816	384	302	2,363
DEC	4,891	1,864	377	369	2,281
Average	5,567	2,201	405	369	2,591

GRAPH 7

AFDC Families Receiving Emergency Assistance December 1993 through December 1995



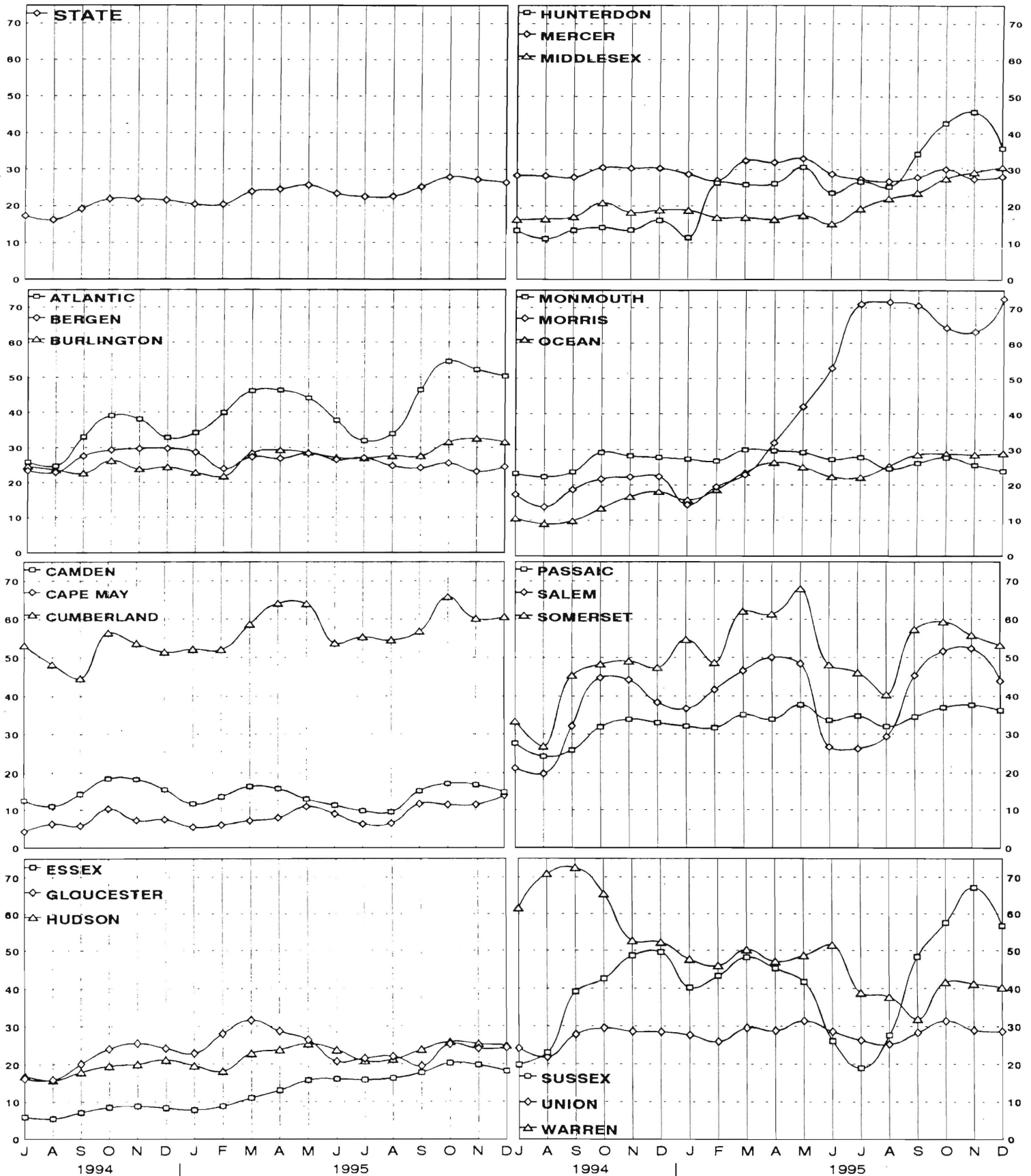
New Jersey Department of Human Services
Division of Family Development

TABLE 8
JOBS/FDP PARTICIPATION RATES BY MONTH
(PERCENT)

COUNTY	JUL 94	AUG 94	SEP 94	OCT 94	NOV 94	DEC 94	JAN 95	FEB 95	MAR 95	APR 95	MAY 95	JUN 95	JUL 95	AUG 95	SEP 95	OCT 95	NOV 95	DEC 95
ATLANTIC	26.0	24.8	33.0	39.0	38.0	32.8	34.2	39.8	46.1	46.3	44.0	37.7	31.9	33.9	46.4	54.6	52.2	50.3
BERGEN	23.5	23.0	27.6	29.3	29.7	29.7	28.6	23.9	27.3	26.9	28.3	26.5	27.0	24.8	24.2	25.5	23.1	24.5
BURLINGTON	24.7	23.7	22.7	26.2	23.9	24.4	22.9	21.8	28.5	29.2	28.6	27.1	26.9	27.7	27.6	31.5	32.5	31.5
CAMDEN	12.6	11.1	14.3	18.5	18.3	15.5	11.7	13.6	16.3	15.7	12.9	11.3	9.8	9.5	15.1	17.1	16.8	14.8
CAPE MAY	4.4	6.3	5.8	10.4	7.3	7.5	5.5	6.0	7.2	7.9	10.9	9.0	6.3	6.5	11.7	11.4	11.5	13.9
CUMBERLAND	44.7	45.1	52.5	56.4	53.7	51.5	52.2	52.1	58.6	64.1	64.0	53.8	55.3	54.6	56.9	65.9	60.2	60.6
ESSEX	6.0	5.5	7.2	8.5	8.8	8.3	7.8	8.8	11.0	13.0	15.7	16.0	15.8	16.2	17.7	20.2	19.7	18.1
GLOUCESTER	16.2	15.8	20.0	24.0	25.5	24.2	22.8	28.1	31.6	28.7	26.4	20.7	21.5	22.0	19.5	25.3	24.1	24.4
HUDSON	17.0	15.7	17.9	19.5	20.0	21.1	19.6	18.1	22.9	23.8	25.4	23.8	20.8	21.2	23.8	26.0	25.4	25.0
HUNTERDON	13.3	11.1	13.4	14.2	13.5	16.1	11.5	26.2	25.8	26.1	30.6	23.5	26.6	25.2	34.3	42.7	45.8	35.9
MERCER	28.4	28.3	27.9	30.5	30.4	30.4	28.7	27.0	32.5	31.9	33.1	28.7	27.3	26.7	27.8	30.1	27.4	28.0
MIDDLESEX	16.3	16.5	17.1	20.8	18.2	18.8	18.8	16.8	16.9	16.3	17.4	15.1	19.2	22.0	23.6	27.5	29.3	30.6
MONMOUTH	23.2	22.3	23.7	29.2	28.2	27.8	27.3	26.8	29.9	29.6	29.1	27.2	27.7	24.5	26.2	27.8	25.6	23.9
MORRIS	17.3	13.7	18.7	21.7	22.2	22.4	14.4	19.5	22.9	31.9	42.0	52.9	71.0	71.7	70.7	64.4	63.3	72.6
OCEAN	10.6	9.0	9.9	13.4	16.7	18.1	15.8	18.6	23.6	26.4	25.0	22.3	22.1	25.4	28.6	28.9	28.6	28.9
PASSAIC	27.7	24.3	25.9	31.9	33.9	33.0	32.1	31.7	35.1	33.9	37.7	33.6	34.7	32.0	34.5	37.0	37.6	36.2
SALEM	21.2	19.8	32.2	44.8	44.2	38.3	36.7	41.7	46.6	50.0	48.4	26.7	26.3	29.4	45.3	51.7	52.4	43.9
SOMERSET	33.4	26.9	45.4	48.3	49.1	47.4	54.7	48.7	62.0	61.3	68.0	48.1	46.1	40.3	57.3	59.3	55.8	53.2
SUSSEX	19.7	23.0	39.2	42.6	48.7	49.6	40.2	43.3	48.2	45.3	41.7	26.1	19.0	27.7	48.4	57.5	67.2	56.7
UNION	24.2	21.8	27.9	29.5	28.7	28.6	27.7	26.0	29.6	28.9	31.4	28.6	26.3	25.2	28.4	31.4	29.0	28.8
WARREN	61.5	71.0	72.5	65.4	52.6	52.2	47.7	46.1	50.3	47.2	48.7	51.5	38.9	37.8	32.0	41.7	41.3	40.3
STATE	17.3	16.3	19.1	21.8	21.8	21.5	20.4	20.3	23.8	24.5	25.7	23.3	22.5	22.6	25.2	27.9	27.2	26.4

GRAPH 8

JOBS/FDP PARTICIPATION RATES (%)



New Jersey Department of Human Services
Division of Family Development

TABLE 9
GENERAL ASSISTANCE Program
State Summary

**NUMBER OF EMPLOYABLE AND UNEMPLOYABLE
RECIPIENTS DURING REPORT MONTH**
June 1993 through June 1995

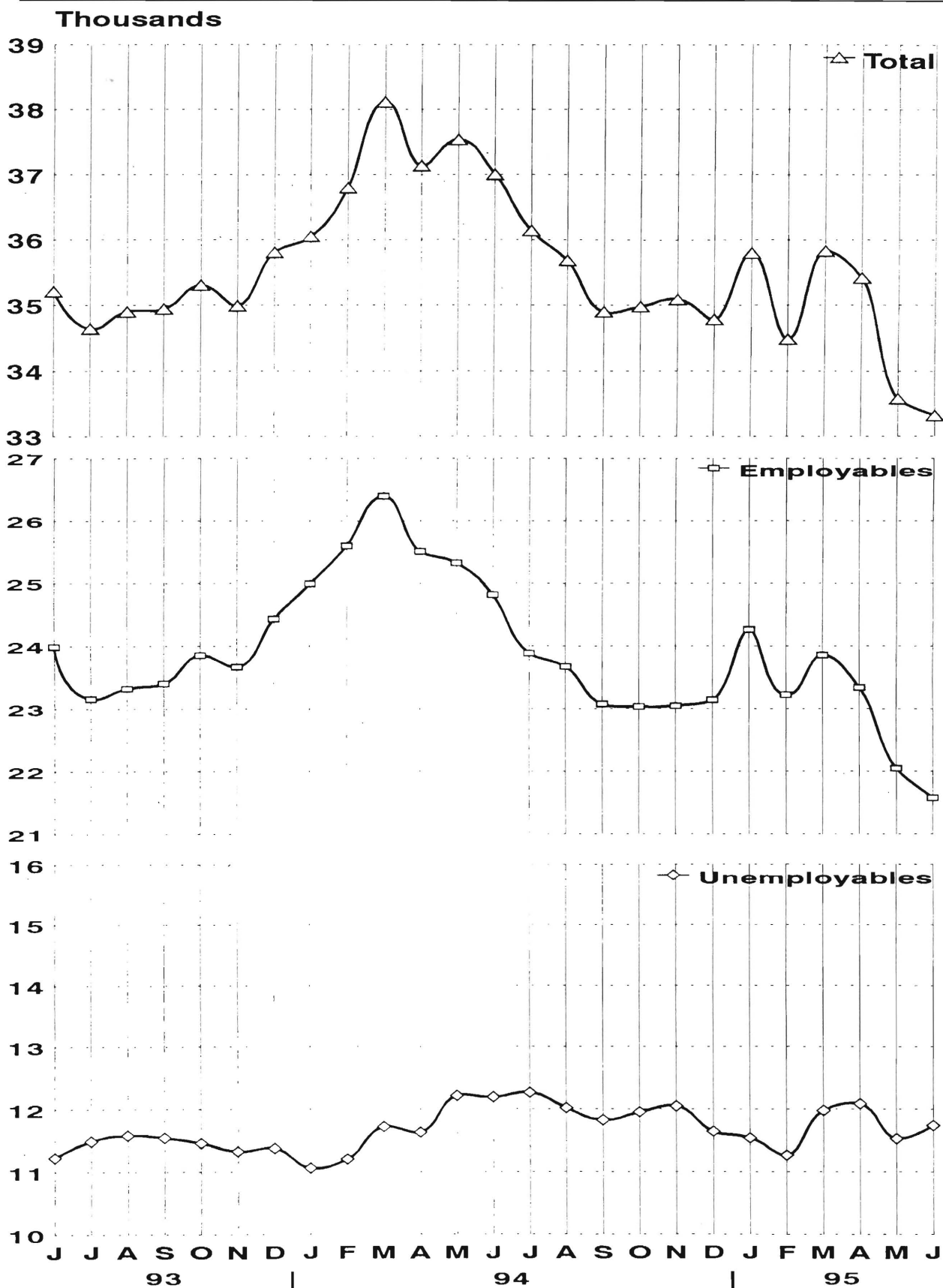
		Number of Persons Aided		
		Employables	Unemployables	Total
1993	Jun	23,989	11,225	35,214
	Jul	23,156	11,488	34,644
	Aug	23,320	11,580	34,900
	Sep	23,402	11,542	34,944
	Oct	23,853	11,455	35,308
	Nov	23,668	11,324	34,992
	Dec	24,435	11,374	35,809
AVERAGE (12 mos)		24,250	11,374	35,624
1994	Jan	24,992	11,062	36,054
	Feb	25,600	11,202	36,802
	Mar	26,397	11,719	38,116
	Apr	25,512	11,629	37,141
	May	25,327	12,212	37,539
	Jun	24,814	12,190	37,004
	Jul	23,884	12,261	36,145
	Aug	23,671	12,018	35,689
	Sep	23,075	11,825	34,900
	Oct	23,031	11,950	34,981
	Nov	23,046	12,045	35,091
	Dec	23,142	11,642	34,784
AVERAGE		24,486	11,828	36,315
1995	Jan	24,262	11,537	35,799
	Feb	23,219	11,264	34,483
	Mar	23,855	11,976	35,831
	Apr	23,337	12,082	35,419
	May	22,046	11,527	33,573
	June	21,575	11,738	33,313
AVERAGE		23,049	11,687	34,736

Data Sources: Data is derived from NJ Division of Family Development

GRAPH 9

General Assistance Recipients

June 1993 through June 1995



New Jersey Department of Human Services
Division of Family Development

TABLE 10

CHILD SUPPORT AND PATERNITY

State Summary

Child Support and Paternity Collections

\$1000's

COLLECTION SOURCE	Fiscal Years			Most Recent Six Months		
	1994	1995	% change	7/94-12/94	7/95-12/95	% change
AFDC & FOSTER CARE						
Federal Tax	\$15,255	\$15,664	2.7%	\$1,246	\$1,931	55.0%
State Tax	1,970	1,762	-10.6%	979	1,075	9.8%
Unempl. Ins. Ben.	4,975	3,867	-22.3%	1,389	2,407	73.3%
Income Withholding	43,219	45,262	4.7%	22,146	22,562	1.9%
Other/Own Behalf	18,138	18,431	1.6%	9,031	8,011	-11.3%
From Other States	3,621	3,429	-5.3%	1,694	1,625	-4.0%
For Other States	5,269	6,873	30.5%	3,346	3,640	8.8%
TOTAL COLLECTION	\$92,447	\$95,289	3.1%	\$39,831	\$41,250	3.6%
NON- AFDC						
Federal Tax	\$6,547	\$6,822	4.2%	\$956	\$1,225	31.3%
State Tax	2,210	2,044	-7.5%	1,198	1,356	13.2%
Unempl. Ins. Ben.	15,110	13,338	-11.7%	5,183	7,799	50.5%
Income Withholding	214,405	251,694	17.4%	119,284	128,399	7.6%
Other/Own Behalf	144,715	156,899	8.4%	76,588	67,859	-11.4%
From Other States	19,969	20,835	4.3%	9,962	9,855	-1.1%
For Other States	20,015	27,338	36.6%	13,154	13,901	5.7%
TOTAL COLLECTION	\$422,970	\$478,969	13.2%	\$226,326	\$230,425	1.8%
TOTAL						
Federal Tax	\$21,802	\$22,486	3.1%	\$2,202	\$3,186	44.7%
State Tax	4,179	3,806	-8.9%	2,177	2,431	11.7%
Unempl. Ins. Ben.	20,085	17,205	-14.3%	6,573	10,206	55.3%
Income Withholding	257,624	296,957	15.3%	141,430	150,961	6.7%
Other/Own Behalf	162,853	175,329	7.7%	85,619	75,870	-11.4%
From Other States	23,590	24,264	2.9%	11,655	11,480	-1.5%
For Other States	25,284	34,211	35.3%	16,500	17,541	6.3%
TOTAL COLLECTION	\$515,417	\$574,258	11.4%	\$266,157	\$271,675	2.1%

Collection Source: Reflects Collections Recorded by County Probation Departments

Explanatory Notes

The Department of Human Services Division of Family Development provides basic income and an opportunity to achieve self-sufficiency for individuals and families served by the Division's programs. The Division provides leadership, direction and supervision to those public agencies responsible for administering those programs and plans for and develops policies to promote self-sufficiency.

AID TO FAMILIES WITH DEPENDENT CHILDREN (AFDC) - Financial assistance for dependent children and their natural or adoptive parents, or certain other relatives recognized as taking the place of a parent.

Regular AFDC (C Segment) - assistance when only one parent is in the home due to death or absence, or both parents are in the home but at least one is incapacitated.

Unemployed Parents (F Segment) - assistance when both parents are in the home, neither is incapacitated and the primary wage earner meets the federally defined criteria for unemployment.

State AFDC (N Segment) - assistance when both parents are in the home, neither is incapacitated, and the primary wage earner does not meet the federal definition of unemployment.

Medicaid Only - families no longer receiving AFDC financial assistance but remaining eligible for Medicaid under applicable provisions which extend coverage beyond period of AFDC assistance.

FOOD STAMP PROGRAM (FS) - Authorized by Congress as a nutritional supplement program to provide low income households with more food of greater variety and better nutrition. Program eligibility is based on household income, resources, and expenses for medical, shelter, and dependent care. CWA staff refer certain recipients to the New Jersey Department of Labor for participation in the Food Stamp Employment and Training Program.

EMERGENCY ASSISTANCE (EA) - Payments to those eligible for AFDC (also for General Assistance or Supplemental Security Income, not included here), authorized during the 30 consecutive days immediately following the emergency (defined as a substantial loss of shelter, food, clothing, or household furnishings by fire, flood or other similar disaster) or if the eligible individual or family is in an imminent or actual state of homelessness.

JOBS/FDP

JOB OPPORTUNITY AND BASIC SKILLS PROGRAM (JOBS) - Federally mandated work/training program for recipients of AFDC established by the Family Support Act of 1988 under Part F of Title IV of the Social Security Act.

FAMILY DEVELOPMENT PROGRAM (FDP) - Reform legislation enacted by the State Legislature in January 1992 to: build, strengthen, and support the family unit; encourage family formation; reduce the long-term aspects of welfare dependency; look to the needs of the family unit as a whole; emphasize education and training for all family members; maximize use of educational, training and employment resources; and develop genuine private sector job opportunities.

SNAPSHOT OF ACTIVITY AT POINT IN TIME - Status of activities as of the end of the month:

Total Non-Exempt JOBS/FDP Recipients - Calculation of the number of mandatory IV-F individuals (FAMIS report # FB304).

Employment Directed Activities (EDA) - From Activities Summary Report (OMEGA report # RM064). Unduplicated count of persons participating in **Training, Education, or Job Search**.

Participants in EDA, Receiving Support Services - From Issuance Disbursement Summary (OMEGA report # RM703). Total number of active participants who show receipt of **Training Related Expenses or Child Care**.

Participation Rate (JOBS/FDP) - Federally mandated calculation method, dividing the number of participants whose combined and averaged weekly hours of participation in qualifying activities equals or exceeds 20 hours per week by the total number of non-exempt IV-F recipients. As of the end of the month.

ACTIVITY FOR THE MONTH - Number of participants with the indicated activity during the month:

Participants with First Case Management Interview - From Activities Summary Report (OMEGA report # RM064).

Number of Persons Employed This Month, Still Receiving AFDC - From Activities Summary Report (OMEGA report # RM064).

Number of Persons Closed on FAMIS Due to Earnings - From FAMIS report # FM463.

Post AFDC and Receiving Child Care - Persons no longer in receipt of AFDC, but still receiving child care. From Issuance Disbursement Summary (OMEGA report # RM703).

New Jersey Department of Human Services
Division of Family Development

TABLE 11**GENERAL ASSISTANCE Program**

NUMBER OF EMPLOYABLE AND UNEMPLOYABLE RECIPIENTS
DURING REPORT MONTH
COUNTIES AND 21 LARGEST MUNICIPALITIES

June 1995

County	Employables	Unemployables	Total	Municipality	Employables	Unemployables	Total
ATLANTIC	1,171	562	1,733	Atlantic City	944	300	1,244
BERGEN	520	567	1,087	Mount Holly	202	79	281
BURLINGTON	596	420	1,016	Camden	1,366	716	2,082
CAMDEN	1,760	1,163	2,923	Vineland	216	113	329
CAPE MAY	98	133	231	East Orange	566	460	1,026
CUMBERLAND	371	203	574	Irvington	285	96	381
ESSEX	7,095	2,417	9,512	Montclair	195	105	300
GLOUCESTER	184	215	399	Newark	5,532	1,477	7,009
HUDSON	1,169	1,156	2,325	Orange	391	61	452
HUNTERDON	54	59	113	Bayonne	117	60	177
MERCER	1,844	761	2,605	Hoboken	141	115	256
MIDDLESEX	587	617	1,204	Jersey City	655	507	1,162
MONMOUTH	777	781	1,558	Trenton	1,727	644	2,371
MORRIS	173	247	420	Perth Amboy	137	112	249
OCEAN	725	552	1,277	Asbury Park	181	100	281
PASSAIC	2,350	590	2,940	Long Branch	220	105	325
SALEM	156	106	262	Lakewood	359	154	513
SOMERSET	100	144	244	Passaic	711	233	944
SUSSEX	65	64	129	Paterson	1,493	156	1,649
UNION	1,717	915	2,632	Elizabeth	1,087	494	1,581
WARREN	63	66	129	Plainfield	243	112	355
NJ TOTAL	21,575	11,738	33,313	NJ TOTAL	16,768	6,199	22,967

New Jersey Department of Human Services
Division of Family Development

TABLE 12
CHILD SUPPORT AND PATERNITY

NUMBER OF CASES REMAINING OPEN FOR THE QUARTER ENDING
December 1995

	<u>CASES WITH ORDERS</u>			<u>OTHER CASES (1)</u>				
	AFDC AND FOSTER CARE	AFDC AND FOSTER CARE ARREARS (2)	NON- AFDC	AFDC AND FOSTER CARE	NON- AFDC	TOTAL AFDC AND FOSTER CARE	TOTAL NON- AFDC	TOTAL ALL CASES
Atlantic	2,719	4,175	10,086	4,184	4,941	11,078	15,027	26,105
Bergen	1,536	1,755	8,336	1,745	1,418	5,036	9,754	14,790
Burlington	1,991	2,670	9,290	2,364	2,981	7,025	12,271	19,296
Camden	9,861	9,780	21,710	10,449	7,997	30,090	29,707	59,797
Cape May	736	983	3,046	672	657	2,391	3,703	6,094
Cumberland	3,841	4,719	10,247	1,149	936	9,709	11,183	20,892
Essex	16,707	15,895	35,805	26,471	17,536	59,073	53,341	112,414
Gloucester	1,804	2,053	5,184	1,383	1,408	5,240	6,592	11,832
Hudson	8,040	7,685	19,289	12,955	9,111	28,680	28,400	57,080
Hunterdon	159	277	1,542	130	148	566	1,690	2,256
Mercer	4,322	5,091	12,163	4,366	4,315	13,779	16,478	30,257
Middlesex	3,203	4,235	13,747	4,165	4,207	11,603	17,954	29,557
Monmouth	3,632	4,383	11,461	2,713	2,711	10,728	14,172	24,900
Morris	450	432	3,381	901	963	1,783	4,344	6,127
Ocean	1,870	2,672	8,549	2,671	3,271	7,213	11,820	19,033
Passaic	5,381	5,760	15,361	6,573	5,916	17,714	21,277	38,991
Salem	1,102	1,410	2,939	389	372	2,901	3,311	6,212
Somerset	509	584	2,828	735	930	1,828	3,758	5,586
Sussex	343	565	2,176	242	293	1,150	2,469	3,619
Union	3,811	3,978	11,509	5,674	5,451	13,463	16,960	30,423
Warren	641	954	2,783	211	169	1,806	2,952	4,758
NJ TOTAL	72,658	80,056	211,432	90,142	75,731	242,856	287,163	530,019

Data Sources: Automated Child Support Enforcement System Report # CS199-3

(1) - Needing location, paternity or other services to establish an obligation

(2) - Cases with arrears *only*