

# Universal Blood Lead Testing

## Test early. Catch lead exposure before it causes harm

Children should be tested at ages 1 and 2, or by age 6 if they've never been tested.

Lead testing information for families



## Essential Lead Information



### Symptoms of Lead Poisoning

Know the symptoms of lead poisoning so you can protect your child's health.

[See the warning signs](#)



## Lead Poisoning Prevention

Everyday steps you can take to keep your child safe at home.

[Start prevention today.](#)



## Lead Resources

Resources, flyers, printouts, and educational materials on lead.

[See helpful materials](#)



## Reports and Data

Annual Reports on childhood lead exposure in New Jersey.

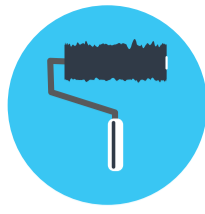
[View NJ reports](#)



# Protecting Children from Lead Exposure

Children under 6 are most at risk. Lead can harm their growth and development, and the only way to know if they've been exposed is through testing.

**Common sources of lead contamination:**



### Lead-Based Paint

Homes built before 1978 may have lead paint that breaks down into dangerous dust and chips.



### Leaded Pipes

Lead can leach from older pipes into the water your family drinks and cooks with.



### Contaminated Soil

Lead dust and paint chips can remain in soil and pose a risk to children outdoors.



### Jobs/Hobbies

Work and hobbies like construction or pottery can carry lead dust home on clothing and tools.



### Imported Goods

Some imported toys, cosmetics, candies, and spices may contain hidden lead.



### Herbal Remedies

Certain traditional remedies and folk medicines can contain unsafe levels of lead.



Get testing information

### Contact Information

Send us an email if you have any questions.

[clpp.fhs@doh.nj.gov](mailto:clpp.fhs@doh.nj.gov)



## Potential Lead Exposure Mapping Tool

The Potential Lead Exposure Map shows potential sources of lead exposure. Currently, this tool specifically looks at lead paint in housing as a source, provides information on distribution of one and two-family rental units built prior to 1980.

View the map



## Childhood Lead

[Home](#)

[Universal Blood Lead Testing](#)

[Symptoms of Lead Exposure](#)

[Lead Poisoning Prevention](#)

[Resources and Educational Materials](#)

[Reports and Data](#)

## Statewide

[Governor Phil Murphy](#)

[Lt. Governor Tahesha Way](#)

[NJ Home](#)

[Services A to Z](#)

[Departments/Agencies](#)

[Contact Us](#)

[Privacy Notice](#)

[Legal Statement & Disclaimers](#)

[Accessibility Statement](#)



Copyright © State of New Jersey, 1996-2025

**Department of Health**

P. O. Box 360

Trenton, NJ 08625-0360