



State of New Jersey

DEPARTMENT OF COMMUNITY AFFAIRS

CHRISTINE TODD WHITMAN
Governor

HARRIET DERMAN
Commissioner

CURRENT / PAST ELECTED WOMEN OFFICIALS
IN NEW JERSEY, 1921 - 1995

NOTE: From New Jersey's beginnings in 1668 through 1920, no woman served on the Council, in the Legislature, in Congress, or as Governor. Although women began being elected to the State Assembly once they regained the right to vote in 1920, it wasn't until 1966 that any women served in the State Senate, and at that it took an increase in the number of Senators to 29 from the old number of 21 (1 per county). New Jersey first elected a woman to Congress in 1924. From that time on, New Jersey has had a woman member of its Congressional delegation most years; however, no woman as yet has been elected to the U. S. Senate from New Jersey. And, it wasn't until 1993 that New Jersey elected its first woman Governor.

GOVERNOR

NOTE: No woman served as Governor of New Jersey before 1994.

1994 - 1997

Christine Todd Whitman (Somerset/Hunterdon) (R)

CONGRESS

NOTE: No woman from New Jersey has ever served in the U. S. Senate. All listings are for the House of Representatives, where the first New Jersey woman was elected in 1924.

1925 - 1950

Mary K. Norton (D-Jersey City, Hudson)*

1951 - 1956

None

1957 - 1972

Florence P. Dwyer (R-Elizabeth, Union)#

1973 - 1974

None

1975 - 1978

+Helen S. Meyner(D-Phillipsburg, Warren)
#Millicent Fenwick (R-Bernardsville, Som)

1978 - 1980

#Millicent Fenwick (R-Bernardsville, Som)

1981 - 1982

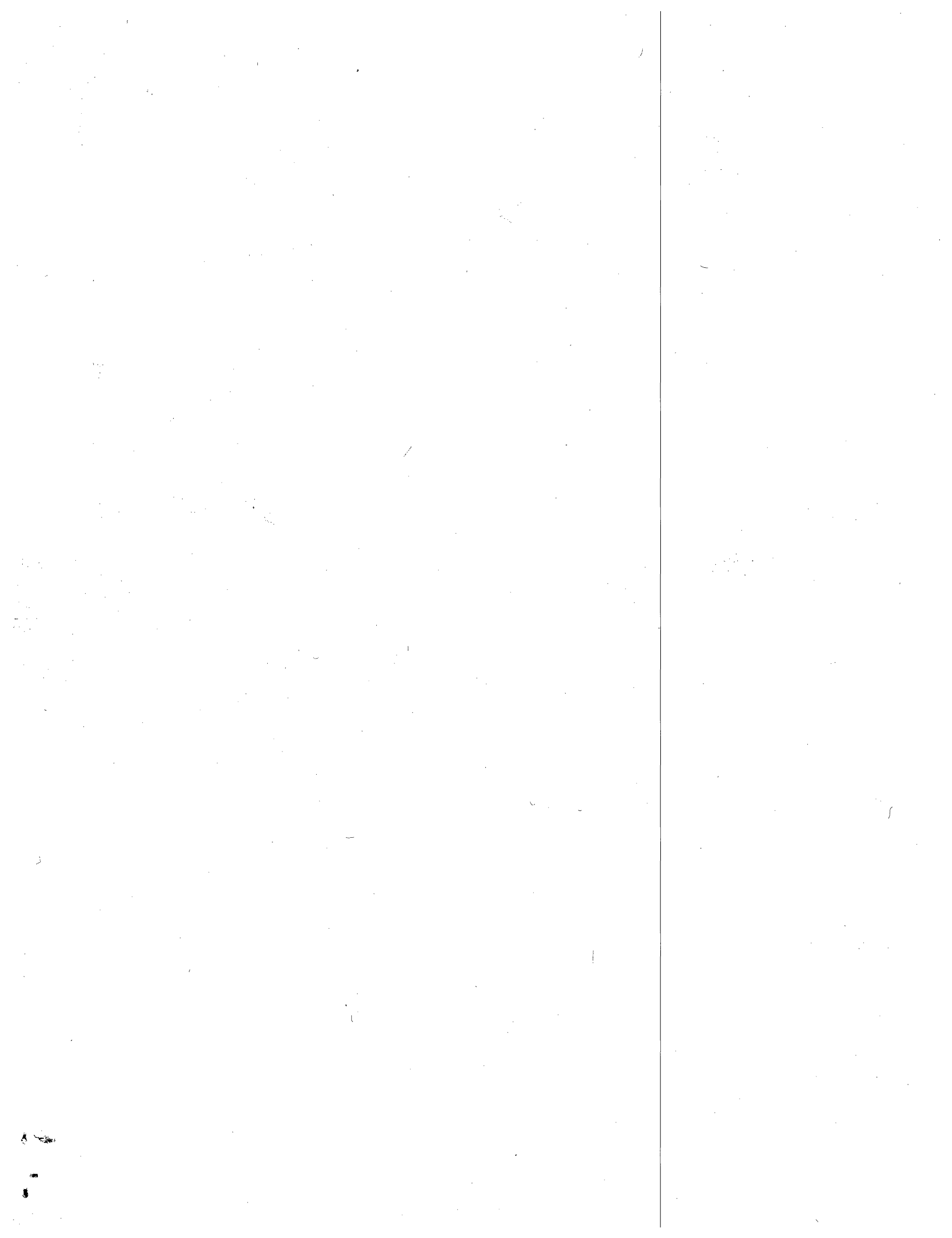
Millicent Fenwick (R-Bernardsville, Som)#
Marge S. Roukema (Ridgeood, Bergen) (R)+

1983 - 1996

Marge S. Roukema (Ridgeood, Bergen) (R)+

New Jersey State Library





CURRENT AND PAST NEW JERSEY ELECTED WOMEN OFFICIALS - Congress (2)

L E G I S L A T U R E

S T A T E S E N A T E

NOTE: No woman served in the State Senate before 1966

1 9 6 6 - 1 9 6 8

Mildred Barry Hughes (D-Union)

1 9 6 9 - 1 9 7 0

N o n e

1 9 7 1

Jerry F. English, Esq. (D-Union)

1 9 7 2 - 1 9 7 3

Wynona S. Lipman (D-Essex)

1 9 7 4 - 1 9 7 7

Alene S. Ammond (D-Camden)

Wynona S. Lipman (D-Essex)

Anne C. Martindell (D-Mercer)%

1 9 7 8 - 1 9 8 3

Wynona S. Lipman (D-Essex)

1 9 8 4 - 1 9 9 0

Catherine A. Costa (D-Burlington)'

Wynona S. Lipman (D-Essex)

Leanna Brown (R-Morris)

1 9 9 1 - 1 9 9 3

Wynona S. Lipman (D-Essex)

Leanna Brown (R-Morris)'

1 9 9 4 - 1 9 9 7

Wynona S. Lipman (D-Essex)

N E W J E R S E Y G E N E R A L A S S E M B L Y

1 9 2 1

Margaret B. Laird (R-Essex)

Jennie C. Van Ness (R-Essex)

1 9 2 2

Margaret B. Laird (R-Essex)

Katherine (Kate) Whelan Brown (D-Hudson)

1 9 2 3

Mabel C. North (R-Essex)

Agnes Anne Schermerhorn (R-Essex)

Katherine (Kate) Whelan Brown (D-Hudson)

1 9 2 4

Margaretta Fort (R-Essex)

May Margaret Carty (D-Hudson)

Catherine M. Finn (D-Hudson)

Lila W. Thompson (R-Ocean)

1 9 2 5

Madge Irene Ebert (R-Essex)

May Margaret Carty (D-Hudson)

Catherine M. Finn (D-Hudson)

May Ashmore Thropp (R-Mercer)

Lila W. Thompson (R-Ocean)

1 9 2 6

Madge Irene Ebert (R-Essex)

Agnes Crowell Jones (R-Essex)

1926 (contd)

May Margaret Carty (D-Hudson)

Catherine M. Finn (D-Hudson)

Marian F. Urbanski (D-Hudson)

May Ashmore Thropp (R-Mercer)

Isabelle McCullough Summers (R-Passaic)

1 9 2 7

Pamela Jane Francisco (R-Bergen)

Agnes Crowell Jones (R-Essex)

Florence Lillian Haines (R-Essex)

Ida May Foster Stelle (R-Essex)

May Margaret Carty (D-Hudson)

Catherine M. Finn (D-Hudson)

Marian F. Urbanski (D-Hudson)

May Ashmore Thropp (R-Mercer)

Isabelle McCullough Summers (R-Passaic)

1 9 2 8

Agnes Crowell Jones (R-Essex)

Florence Lillian Haines (R-Essex)

Ida May Foster Stelle (R-Essex)

May Margaret Carty (D-Hudson)

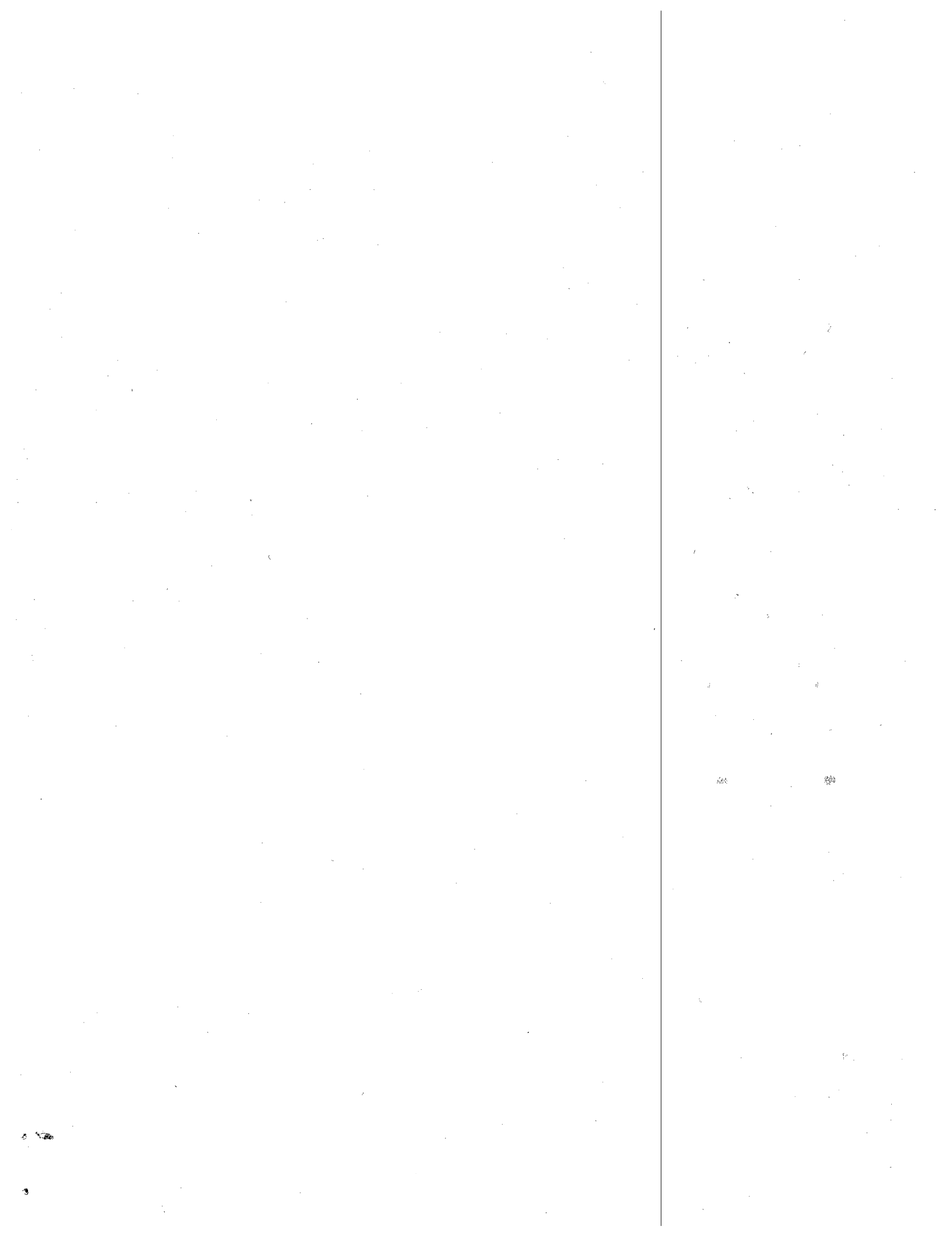
Catherine M. Finn (D-Hudson)

Marian F. Urbanski (D-Hudson)

Isabelle McCullough Summers (R-Passaic)

1 9 2 9

M. Emma Peters (R-Bergen)



CURRENT AND PAST NEW JERSEY ELECTED WOMEN OFFICIALS - General Assembly (3)

1929 (contd)

Agnes Crowell Jones (R-Essex)
Florence Lillian Haines (R-Essex)
Ida May Foster Stelle (R-Essex)
May Margaret Carty (D-Hudson)
Isabelle McCullough Summers (R-Passaic)

1930

M. Emma Peters (R-Bergen)
Agnes Crowell Jones (R-Essex)
Florence Lillian Haines (R-Essex)
Ida May Foster Stelle (R-Essex)
May Margaret Carty (D-Hudson)
Florence A. Barlow (R-Passaic)

1931

M. Emma Peters (R-Bergen)
Agnes Crowell Jones (R-Essex)
Florence Lillian Haines (R-Essex)
Ida May Foster Stelle (R-Essex)
Teresa Antoinette Maloney (D-Hudson)
Florence A. Barlow (R-Passaic)

1932

M. Emma Peters (R-Bergen)
Rosemary Carroll (D-Essex)
Teresa Antoinette Maloney (D-Hudson)
Julia C. Mutchler, M.D. (R-Morris)

1933

M. Emma Peters (R-Bergen)
Isabelle C. Reinert (R-Camden)
Mary L. Yuill (R-Essex)
Myrtle M. Trube (R-Essex)
Teresa Antoinette Maloney (D-Hudson)
Julia C. Mutchler, M D (R-Morris)

1934

Isabelle C. Reinert (R-Camden)
Mary L. Yuill (R-Essex)
Myrtle M. Trube (R-Essex)
Teresa Antoinette Maloney (D-Hudson)
Anna Gilmore (D-Passaic)

1935

Mary P. Shelton (R-Bergen)
Isabelle C. Reinert (R-Camden)
Constance Wilson Hand (R-Essex)
Olive C. Sanford (R-Essex)
Teresa Antoinette Maloney (D-Hudson)
Anna Gilmore (D-Passaic)

1936

Mary MacGregor Smith (R-Bergen)
Constance Wilson Hand (R-Essex)

1936 (contd)

Olive C. Sanford (R-Essex)
Teresa Antoinette Maloney (D-Hudson)
Elizabeth Van Duyne Smith (R-Passaic)

1937

Mary MacGregor Smith (R-Bergen)
Eileen G. Brady (D-Essex)
Teresa Antoinette Maloney (D-Hudson)
Jennie W. Pilch (R-Morris)
Nan V. Donohue (D-Passaic)

1938

Mary MacGregor Smith (R-Bergen)
Constance Wilson Hand (R-Essex)
Olive C. Sanford (R-Essex)
Teresa Antoinette Maloney (D-Hudson)
Jennie W. Pilch (R-Morris)
Elizabeth Van Duyne Smith (R-Passaic)

1939 - 1940

Mary MacGregor Smith (R-Bergen)
Constance Wilson Hand (R-Essex)
Olive C. Sanford (R-Essex)
Teresa Antoinette Maloney (D-Hudson)
Mattie S. Doremus (R-Passaic)

1941

Mary MacGregor Smith (R-Bergen)
Constance Wilson Hand (R-Essex)
Olive C. Sanford (R-Essex)
Lettie E. Savage (R-Ocean)
Mattie S. Doremus (R-Passaic)

1942

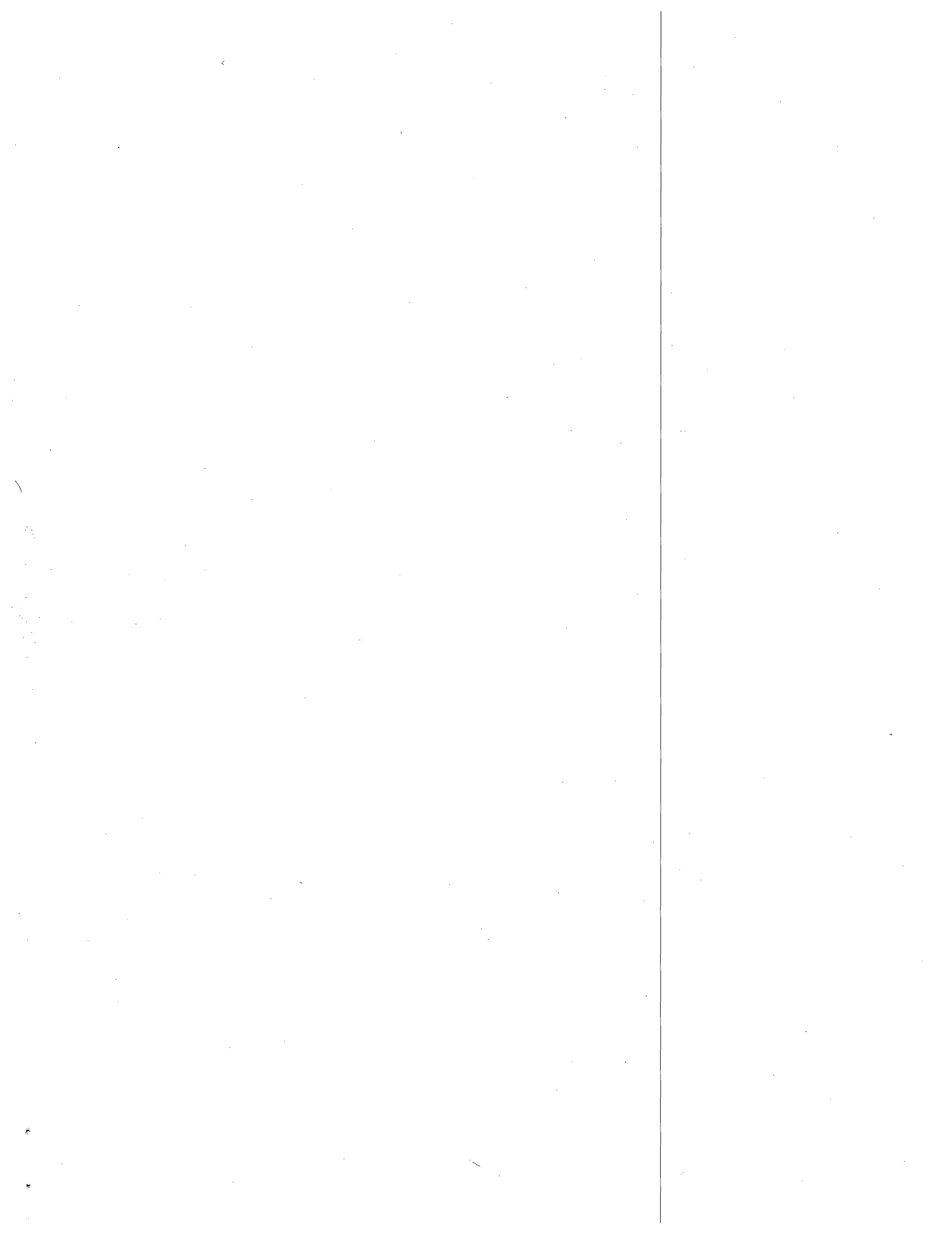
Lillian A. Mathis (R-Bergen)
Olive C. Sanford (R-Essex)
Gloanna Wallace MacCarthy (R-Essex)
Mildred A. Preen (D-Hunterdon)
Lettie E. Savage (R-Ocean)
Mattie S. Doremus (R-Passaic)

1943 - 1944

Lillian A. Mathis (R-Bergen)
Gloanna Wallace MacCarthy (R-Essex)
Mildred V. Hardester (R-Essex)
Mildred A. Preen (D-Hunterdon)
Lettie E. Savage (R-Ocean)
Mattie S. Doremus (R-Passaic)

1945

Lillian A. Mathis (R-Bergen)
Mildred V. Hardester (R-Essex)
Minna P. Greenbaum (R-Essex)
Lettie E. Savage (R-Ocean)



CURRENT AND PAST NEW JERSEY ELECTED WOMEN OFFICIALS - General Assembly (4)

1945 (contd)

Mattie S. Doremus (R-Passaic)
Irene T. Griffin (R-Union)

1946

Lillian A. Mathis (R-Bergen)
Mildred V. Hardester (R-Essex)
Minna P. Greenbaum (R-Essex)
Lettie E. Savage (R-Ocean)
Mattie S. Doremus (R-Passaic)

1947

Lillian A. Mathis (R-Bergen)
Minna P. Greenbaum (R-Essex)

1948

Wilma Marggraff (R-Bergen)
Minna P. Greenbaum (R-Essex)
Grace M. Freeman (R-Essex)
Eugenia Urbanski-Courtney (D-Hudson)
Lettie E. Savage (R-Ocean)
Esther N. Dilger (R-Passaic)

1949

Wilma Marggraff (R-Bergen)
Minna P. Greenbaum (R-Essex)
Grace M. Freeman (R-Essex)
Eugenia Urbanski-Courtney (D-Hudson)
Lettie E. Savage (R-Ocean)
Esther N. Dilger (R-Passaic)

1950 - 1951

Wilma Marggraff (R-Bergen)
Grace M. Freeman (R-Essex)
Margaret D. Haines (R-Essex)
Ruth A. Pilger (R-Essex)
Lettie E. Savage (R-Ocean)
Florence P. Dwyer (R-Union)

1952 - 1953

Wilma Marggraff (R-Bergen)
Margaret D. Haines (R-Essex)
Ruth A. Pilger (R-Essex)
Marie F. Maebert (R-Essex)
Jessie Murphy (D-Hudson)
Lettie E. Savage (R-Ocean)
Emma E. Newton (R-Passaic)
Florence P. Dwyer (R-Union)

1954

Wilma Marggraff (R-Bergen)
Ellen M. Berger (R-Essex)
Marie F. Maebert (R-Essex)
Ruby V. Perfette (R-Essex)
Jessie Murphy (D-Hudson)

1954 (contd)

Lettie E. Savage (R-Ocean)
Emma E. Newton (R-Passaic)
Florence P. Dwyer (R-Union)

1955

Ellen M. Berger (R-Essex)
Marie F. Maebert (R-Essex)
Ruby V. Perfette (R-Essex)
Jessie Murphy (D-Hudson)
Lettie E. Savage (R-Ocean)
Emma E. Newton (R-Passaic)
Florence P. Dwyer (R-Union)

1956

Marie F. Maebert (R-Essex)
Ruby V. Perfette (R-Essex)
Esther B. Bush (R-Essex)
Irene Brown (D-Hudson)
Lettie E. Savage (R-Ocean)
Emma E. Newton (R-Passaic)
Florence P. Dwyer (R-Union)**

1957

Clara K. Bivona (R-Bergen)
Marie F. Maebert (R-Essex)
Ruby V. Perfette (R-Essex)
Esther B. Bush (R-Essex)
Irene Brown (D-Hudson)
Lettie E. Savage (R-Ocean)
Emma E. Newton (R-Passaic)

1958 - 1959

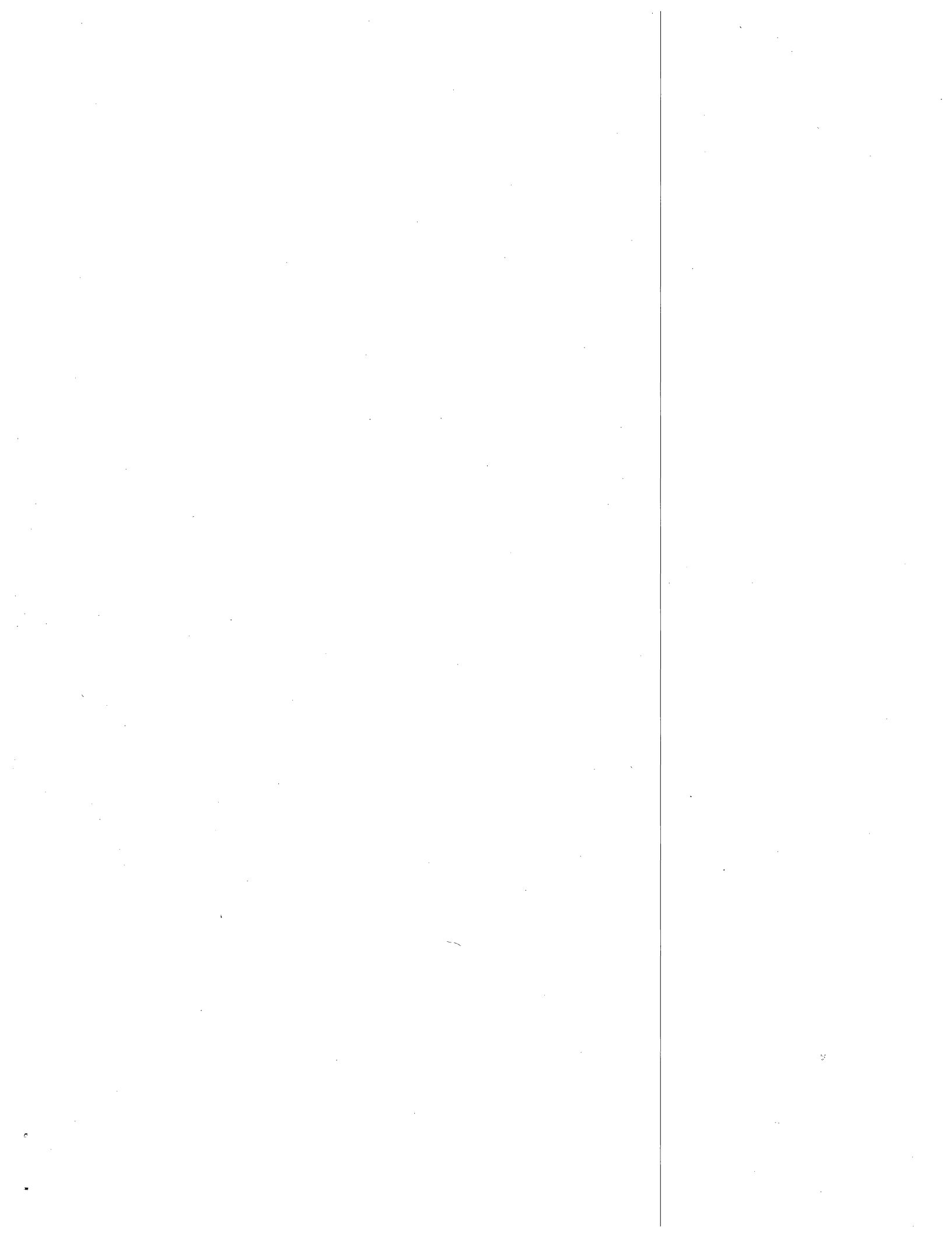
Clara K. Bivona (R-Bergen)
Madeline A. Williams (D-Essex)
Irene Brown (D-Hudson)
Lettie E. Savage (R-Ocean)
Betty McNamara Kordja (D-Passaic)
Mildred Barry Hughes (D-Union)

1960

Marion West Higgins (R-Bergen)
Madeline A. Williams (D-Essex)
Beatrice M. Stiles (R-Essex)
Irene Brown (D-Hudson)
Betty McNamara Kordja (D-Passaic)
Mildred Barry Hughes (D-Union)**

1961

Marion West Higgins (R-Bergen)
Beatrice M. Stiles (R-Essex)
Madeline A. Williams (D-Essex)
Irene Brown (D-Hudson)
Betty McNamara Kordja (D-Passaic)
Mildred Barry Hughes (D-Union)++



CURRENT AND PAST NEW JERSEY ELECTED WOMEN OFFICIALS - General Assembly (5)

1 9 6 2 - 1 9 6 5

Marion West Higgins (R-Bergen) [Spkr 65]
Betty McNamara Kordja (D-Passaic)
Mildred Barry Hughes (D-Union)*+

1 9 6 6 - 1 9 6 7

Betty McNamara Kordja (D-Passaic)

1 9 6 8 - 1 9 6 9

Josephine S. Margetts (R-Morris)

1 9 7 0

Josephine S. Margetts (R-Morris)
Millicent Fenwick (R-Somerset)

1 9 7 1

Josephine S. Margetts (R-Morris)
Millicent Fenwick (R-Somerset)
Elizabeth L. Cox (R-Union)

1 9 7 2

Josephine S. Margetts (R-Morris)
Ann Klein (D-Morris)
Millicent Fenwick (R-Somerset)'

1 9 7 3

Josephine S. Margetts (R-Morris)
Ann Klein (D-Morris)

1 9 7 4

Mary Keating Croce (DiSabato) (D-Camden)
Jane Burgio (R-Essex)
Gertrude Berman (D-Monmouth)
Ann Klein (D-Morris)
Rosemarie Totaro (D-Morris)
Betty Wilson (D-Union)
Barbara A. Curran (R-Union)

1 9 7 5

Mary Keating Croce (DiSabato) (D-Camden)
Jane Burgio (R-Essex)
Gertrude Berman (D-Monmouth)
Rosemarie Totaro (D-Morris)
Betty Wilson (D-Union)
Barbara A. Curran (R-Union)

1 9 7 6 - 1 9 7 7

Mary Keating Croce (DiSabato) (D-Camden)
Jane Burgio (R-Essex)
Alina Miskiewicz (D-Hudson)
Helen Chiarello Szabo (D-Mercer)
Marie S. Muhler (R-Monmouth)
Barbara A. Curran (R-Union)

1 9 7 8

Greta Kiernan (D-Bergen)
Barbara F. Kalik (D-Burlington)
Mary Keating Croce (DiSabato) (D-Camden)
Barbara Berman (D-Camden)
Jane Burgio (R-Essex)
Mary Scanlon (D-Essex)
Mildred B. Garvin (D-Essex)
Barbara W. McConnell (D-Hunterdon)
Helen Chiarello Szabo (D-Mercer)
Marie S. Muhler (R-Monmouth)
Rosemarie Totaro (D-Morris)
Barbara A. Curran (R-Union)

1 9 7 9

Greta Kiernan (D-Bergen)
Barbara F. Kalik (D-Burlington)
Mary Keating Croce (DiSabato) (D-Camden)
Barbara Berman (D-Camden)
Jane Burgio (R-Essex)
Mary Scanlon (D-Essex)
Mildred B. Garvin (D-Essex)
Remay Pierce (D-Essex)
Barbara W. McConnell (D-Hunterdon)
Marie S. Muhler (R-Monmouth)
Rosemarie Totaro (D-Morris)
Barbara A. Curran (R-Union)

1 9 8 0

Barbara F. Kalik (D-Burlington)
Jane Burgio (R-Essex)
Mildred B. Garvin (D-Essex)
Barbara W. McConnell (D-Hunterdon)
Marie S. Muhler (R-Monmouth)
Leanna Brown (R-Morris)
Barbara A. Curran (R-Union)'

1 9 8 1

Barbara F. Kalik (D-Burlington)
Jane Burgio (R-Essex)
Mildred B. Garvin (D-Essex)
Barbara W. McConnell (D-Hunterdon)
Marie S. Muhler (R-Monmouth)
Leanna Brown (R-Morris)
Hazel F. Gluck (R-Ocean)

1 9 8 2

Dolores G. Cooper (R-Atlantic)
Joan M. Wright (R-Bergen)
Barbara F. Kalik (D-Burlington)
Catherine A. Costa (D-Burlington)
Mildred B. Garvin (D-Essex)
Maureen Ogden (R-Essex)
Marie S. Muhler (R-Monmouth)
Leanna Brown (R-Morris)

CURRENT AND PAST NEW JERSEY ELECTED WOMEN OFFICIALS - General Assembly (6)

1982 (contd)

Hazel F. Gluck (R-Ocean)
Angela L. Perun (D-Union)

1983

Dolores G. Cooper (R-Atlantic)
Joan M. Wright (R-Bergen)
Barbara F. Kalik (D-Burlington)
Catherine A. Costa (D-Burlington)*+
Mildred B. Garvin (D-Essex)
Maureen Ogden (R-Essex)
Marie S. Muhler (R-Monmouth)
Leanna Brown (R-Morris)
Angela L. Perun (D-Union)

1984

Dolores G. Cooper (R-Atlantic)
Barbara F. Kalik (D-Burlington)
Mildred B. Garvin (D-Essex)
Maureen Ogden (R-Essex)
Marie S. Muhler (R-Monmouth)
Jacqueline Walker (D-Monmouth)
Marlene Lynch Ford (D-Ocean)
Angela L. Perun (D-Union)

1985

Dolores G. Cooper (R-Atlantic)
Elizabeth Randall, Esq. (R-Bergen)
Barbara F. Kalik (D-Burlington)
Mildred B. Garvin (D-Essex)
Maureen Ogden (R-Essex)
Marie S. Muhler (R-Monmouth)
Jacqueline Walker (D-Monmouth)
Marlene Lynch Ford (D-Ocean)
Angela L. Perun (D, R-Union)

1986

Dolores G. Cooper (R-Atlantic)
Elizabeth Randall, Esq. (R-Bergen)
Kathleen A. Donovan, Esq. (R-Bergen)
Barbara F. Kalik (D-Burlington)
Mildred B. Garvin (D-Essex)
Maureen Ogden (R-Essex)
Marion Crecco (R-Essex)
JoAnn H. Smith (R-Middlesex)
Marie S. Muhler (R-Monmouth)

1987

Dolores G. Cooper (R-Atlantic)
Elizabeth Randall, Esq. (R-Bergen)
Kathleen A. Donovan, Esq. (R-Bergen)
Barbara F. Kalik (D-Burlington)
Mildred B. Garvin (D-Essex)
Maureen Ogden (R-Essex)
Marion Crecco (R-Essex)

1987 (contd)

JoAnn H. Smith (R-Middlesex)
Clare M. Farragher (R-Monmouth)

1988

Dolores G. Cooper (R-Atlantic)
Elizabeth Randall, Esq. (R-Bergen)
Barbara F. Kalik (D-Burlington)
Maureen Ogden (R-Essex)
Marion Crecco (R-Essex)
Stephanie R. Bush (D-Essex)
JoAnn H. Smith (R-Middlesex)
Clare M. Farragher (R-Monmouth)

1989

Dolores G. Cooper (R-Atlantic)
Elizabeth Randall, Esq. (R-Bergen)
Barbara F. Kalik (D-Burlington)
Maureen Ogden (R-Essex)
Marion Crecco (R-Essex)
Stephanie R. Bush (D-Essex)
JoAnn H. Smith (R-Middlesex)
Clare M. Farragher (R-Monmouth)

1990

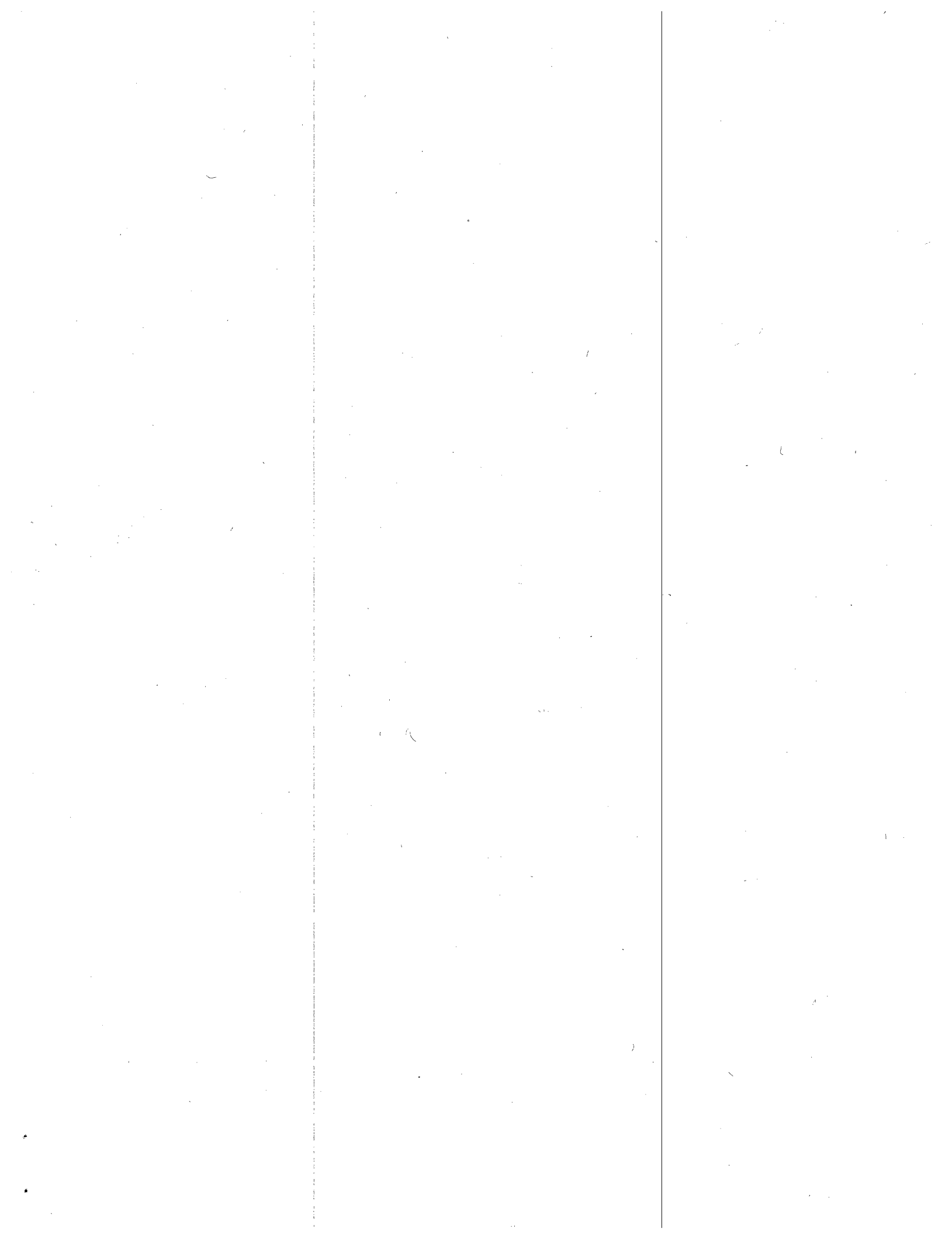
Dolores G. Cooper (R-Atlantic)
Elizabeth Randall, Esq. (R-Bergen)
Barbara F. Kalik (D-Burlington)
Maureen Ogden (R-Essex)
Marion Crecco (R-Essex)
Stephanie R. Bush (D-Essex)
Ann A. Mullen (D-Gloucester)
JoAnn H. Smith (R-Middlesex)
Clare M. Farragher (R-Monmouth)
Marlene Lynch Ford (D-Ocean)

1991

Dolores G. Cooper (R-Atlantic)
Elizabeth Randall, Esq. (R-Bergen)
Rose M. Heck (R-Bergen)
Charlotte Vandervalk (R-Bergen)
Barbara F. Kalik (D-Burlington)
Maureen Ogden (R-Essex)
Marion Crecco (R-Essex)
Stephanie R. Bush (D-Essex)
Ann A. Mullen (D-Gloucester)
JoAnn H. Smith (R-Middlesex)
Clare M. Farragher (R-Monmouth)
Marlene Lynch Ford (D-Ocean)

1992

Rose M. Heck (R-Bergen)
Charlotte Vandervalk (R-Bergen)
Loretta Weinberg (D-Bergen)
Priscilla B. Anderson (R-Burlington)



CURRENT AND PAST NEW JERSEY ELECTED WOMEN OFFICIALS - General Assembly (7)

1992 (contd)

Maureen Ogden (R-Essex)
Marion Crecco (R-Essex)
Stephanie R. Bush (D-Essex)
Quilla E. Talmadge (D-Essex)
Mary Virginia Weber (R-Gloucester)

JoAnn H. Smith (R-Middlesex)
Harriet E. Derman, Esq. (R-Middlesex)
Barbara W. Wright (R-Middlesex)
Clare M. Farragher (R-Monmouth)
Virginia E. Haines (R-Ocean)

1993

Rose M. Heck (R-Bergen)
Charlotte Vandervalk (R-Bergen)
Loretta Weinberg (D-Bergen)
Priscilla B. Anderson (R-Burlington)
Maureen Ogden (R-Essex)
Marion Crecco (R-Essex)
Quilla E. Talmadge (D-Essex)
Mary Virginia Weber (R-Gloucester)
JoAnn H. Smith (R-Middlesex)
Harriet E. Derman, Esq. (R-Middlesex)
Barbara W. Wright (R-Middlesex)
Clare M. Farragher (R-Monmouth)
Carol J. Murphy (R-Morris)*
Virginia E. Haines (R-Ocean)

1994

Rose M. Heck (R-Bergen)
Charlotte Vandervalk (R-Bergen)
Loretta Weinberg (D-Bergen)
Maureen Ogden (R-Essex)
Marion Crecco (R-Essex)
Nia H. Gill (D-Essex)
Joan M. Quigley (D-Hudson)
Shirley K. Turner (D-Mercer)
JoAnn H. Smith (R-Middlesex)
Harriet Derman, Esq. (R-Middlesex)
Barbara W. Wright (R-Middlesex)
Joanna Gregory-Scocchi (R-Middlesex)
Clare M. Farragher (R-Monmouth)
Carol J. Murphy (R-Morris)
Virginia E. Haines (R-Ocean)

1995

Rose M. Heck (R-Bergen)
Charlotte Vandervalk (R-Bergen)
Loretta Weinberg (D-Bergen)
Nilsa I. Cruz-Perez (D-Camden)
Maureen Ogden (R-Essex)
Marion Crecco (R-Essex)
Nia H. Gill (D-Essex)
Joan M. Quigley (D-Hudson)
Shirley K. Turner (D-Mercer)

1995 (contd)

Barbara Buono (D-Middlesex)
JoAnn H. Smith (R-Middlesex)
Barbara W. Wright (R-Middlesex)
Clare M. Farragher (R-Monmouth)
Carol J. Murphy (R-Morris)

CURRENT AND PAST NEW JERSEY ELECTED WOMEN OFFICIALS - General Assembly (8)

W O M E N E L E C T E D O F F I C I A L S B Y C O U N T Y

1 9 2 1 - 1 9 9 5

A T L A N T I C

1982-1991 - Mrs. Dolores G. Cooper (Atlantic City) Assembly (R)

B E R G E N

1 9 2 7 - Pamela Jane Francisco (Mrs. Clarence B.) (Ridgewood) [Assembly] (R)
1929-1933 - Mrs. M. Emma Peters (Rutherford) [Assembly] (R)
1 9 3 5 - Mrs. Mary P. Shelton (Leonia) [Assembly] (R)
1936-1941 - Mrs. Mary Mac Gregor Smith (Ridgewood) [Assembly] (R)
1942-1947 - Lillian A. Mathis (Mrs. Lester S.) (Hackensack) [Assembly] (R)
1948-1954 - Wilma Margraff (Mrs. Carl S.) (Westwood) [Assembly] (R)
1957-1959 - Mrs. Clara K. Bivona [Assembly] (R)
1960-1965 - Mrs. Marion West Higgins (R) [Assembly; Speaker, 1965]
1978-1979 - Greta Kiernan [Assembly] (D)
1979-1996 - Marge S. Roukema (Ridgewood) [Congress] (R)
1982-1983 - Joan M. Wright (Woodcliff Lake) [Assembly] (R)
1985-1991 - Elizabeth Randall, Esq. [Assembly] (R)
1986-1987 - Kathleen A. Donovan, Esq. [Assembly] (R)
1991-1995 - Mrs. Rose M. Heck [Assembly] (R)
1991-1995 - Charlotte Vandervalk [Assembly] (R)
1992-1995 - Loretta Weinberg [Assembly] (D)

B U R L I N G T O N

1978-1991 - Barbara F. Kalik [Assembly] (D)
1982-1983 - Catherine A. Costa [Assembly] (D)
1984-1990 - Catherine A. Costa [Senate] (D)
1992-1993 - Priscilla B. Anderson [Assembly] (R)

C A M D E N

1933-1935 - Mrs. Isabella C. Reinert [Assembly] (R)
1974-1977 - Alene S. Ammond [Senate] (D)
1974-1979 - Mary Keating Croce (Di Sabato) [Assembly] (D)
1978-1979 - Barbara Berman [Assembly] (D)
1 9 9 5 - Nilsa Cruz-Perez (Camden) [Assembly] (D)

C A P E M A Y

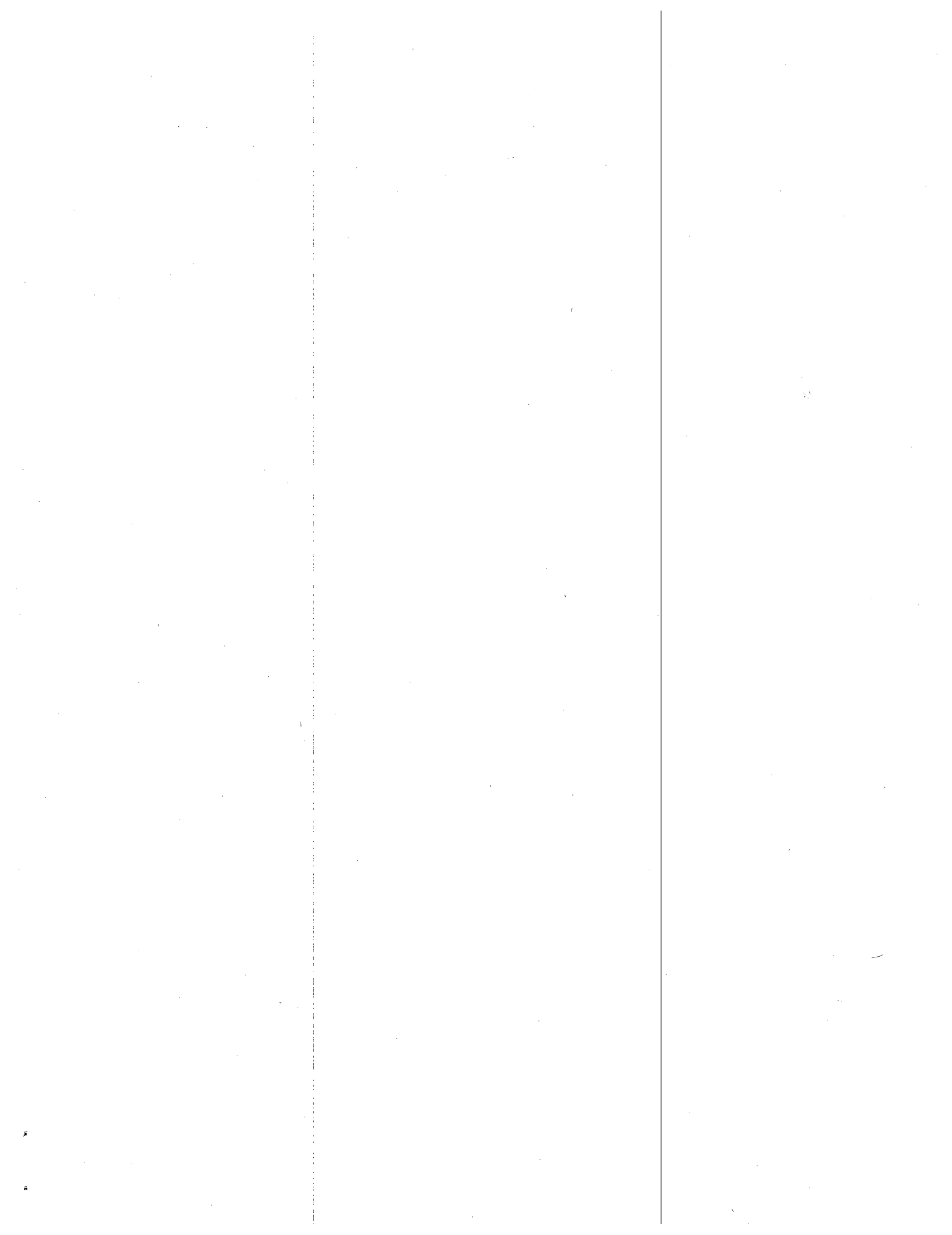
N o n e

C U M B E R L A N D

N o n e

E S S E X

1 9 2 1 - Jennie C. Van Ness (East Orange) [Assembly] (R)
1921-1922 - Margaret B. Laird (Mrs. Reginald M.) (Newark) [Assembly] (R)
1 9 2 3 - Mabel C. North (Mrs. Ralph M.) (Verona) [Assembly] (R)
1 9 2 3 - Agnes Anne Schermerhorn (Mrs. John R.) (East Orange) [Assembly] (R)
1 9 2 4 - Miss Margretta Fort (Llewellyn Park, West Orange) [Assembly] (R)
1925-1926 - Madge Irene Ebert (Mrs. Joseph K.) (Newark) [Assembly] (R)
1926-1931 - Miss Agnes Crowell Jones (South Orange) [Assembly] (R)
1927-1931 - Miss Florence Lillian Haines (Newark) [Assembly] (R)
1927-1931 - Ida May Foster Stelle (Mrs. Irving G.) (Newark) [Assembly] (R)
1 9 3 2 - Mrs. Rosemary Carroll [Assembly] (D)
1933-1934 - Miss Myrtle M. Trube [Assembly] (R)
1933-1934 - Mary L. Yuill (Mrs. Richard) [Assembly] (R)



CURRENT AND PAST NEW JERSEY ELECTED WOMEN OFFICIALS - By County (9)

ESSEX (contd)

- 1935-1936 - Constance W. Hand (Mrs. Clarence J.) (Orange) [Assembly] (R)
1935-1936 - Mrs. Olive C. Sanford [Assembly] (R)
x 9 3 7 - Eileen G. Brady (East Orange) [Assembly] (R)
1938-1941 - Constance W. Hand (Mrs. Clarence J.) (Orange) [Assembly] (R)
1938-1942 - Mrs. Olive C. Sanford [Assembly] (R)
1942-1944 - Mrs. Gloanna Wallace MacCarthy [Assembly] (R)
1943-1946 - Ms. Mildred V. Hardester [Assembly] (R)
1945-1949 - Minna P. Greenbaum (Mrs. William L.) (Newark) [Assembly] (R)
1947-1951 - Miss Grace M. Freeman [Assembly] (R)
1950-1953 - Miss Margaret D. Haines (Newark) [Assembly] (R)
1950-1953 - Ruth A. Pilger (Mrs. Charles L., Jr.) (Verona) [Assembly] (R)
1952-1957 - Marie F. Maebert (Mrs. Alexander M.) (South Orange) [Assembly] (R)
1954-1955 - Mrs. Ellen M. Berger [Assembly] (R)
1954-1957 - Mrs. Ruby V. Perfette [Assembly] (R)
1956-1957 - Mrs. Esther B. Bush [Assembly] (R)
1958-1961 - Madeline A. Williams [Assembly] (D)
1960-1961 - Mrs. Beatrice M. Stiles [Assembly] (R)
1972-1997 - Mrs. Wynona S. Lipman (Newark) [Senate] (D)
1974-1981 - Jane Burgio (Mrs. John) (North Caldwell) [Assembly] (R)
1978-1979 - Mary Scanlon [Assembly] (D)
1978-1987 - Mildred B. Garvin [Assembly] (D)
1 9 7 9 - Mrs. Remay Pierce [Assembly] (D)
1982-1995 - Maureen Ogden (Mrs. Robert) (Short Hills) [Assembly] (R)
1986-1995 - Mrs. Marion Crecco (Bloomfield) [Assembly] (R)
1988-1992 - Stephanie R. Bush, Esq. (East Orange) [Assembly] (D)
1992-1993 - Quilla Talmadge (East Orange) [Assembly] (D) [City Council President]
1994-1995 - Nia H. Gill (Montclair) [Assembly] (D)

G L O U C E S T E R

- 1990-1991 - Ann A. Mullen [Assembly] (D)
1992-1993 - Mary Virginia Weber (Sewell) [Assembly] (R)

H U D S O N

- 1922-1923 - Katherine Whelan Brown (Mrs. James A.) (Jersey City) [Assembly] (D)
1924-1928 - Catherine M. Finn (Mrs. Neil) (West Hoboken) [Assembly] (D)
1924-1930 - Miss May Margaret Carty (Jersey City) [Assembly] (D)
1925-1950 - Mrs. Mary K. Norton (Jersey City) [Member of Congress] (D)
1926-1928 - Marian F. Urbanski (Mrs. Walter) (Jersey City) [Assembly] (D)
1931-1940 - Miss Teresa Antoinette Maloney (Jersey City) [Assembly] (D)
1947-1949 - Eugenia M. V. Urbanski-Courtney, Esq. [Assembly] (D)
1952-1955 - Jessie Murphy [Assembly] (D)
1956-1961 - Irene Brown [Assembly] (D)
1976-1977 - Alina Miskiewicz [Assembly] (D)
1994-1995 - Joan M. Quigley [Assembly] (D)

H U N T E R D O N

- 1942-1944 - Mildred A. Preen [Assembly] (D)
1978-1981 - Barbara W. McConnell [Assembly] (D)

M E R C E R

- 1925-1927 - Miss May Ashmore Thropp (Trenton) [Assembly] (R)
1974-1977 - Mrs. Anne C. Martindell (Princeton) [Senate] (D)
1976-1978 - Helen Chiarello Szabo [Assembly] (D)
1994-1995 - Shirley K. Turner (Lawrenceville) [Assembly] (D)



CURRENT AND PAST NEW JERSEY ELECTED WOMEN OFFICIALS - By County (10)

M I D D L E S E X

- 1986-1995 - JoAnn H. Smith (Old Bridge) [Assembly] (R)
- 1992-1994 - Harriet Derman, Esq. (Metuchen) [Assembly] (R)
- 1992-1995 - Barbara Wright (Plainsboro) [Assembly] (R)
- 1 9 9 4 - Joanna Gregory-Scocchi (North Brunswick) [Assembly] (R)
- 1 9 9 5 - Barbara Buono (Metuchen) [Assembly] (D)

M O N M O U T H

- 1974-1975 - Gertrude Berman [Assembly] (D)
- 1976-1986 - Marie S. Muhler [Assembly] (R)
- 1984-1985 - Jacqueline Walker [Assembly] (D)
- 1987-1995 - Clare M. Farragher [Assembly] (R)

M O R R I S

- 1932-1933 - Julia C. Mutchler, M D (Dover) [Assembly] (R)
- 1937-1938 - Jennie W. Pilch (Madison) [Assembly] (R)
- 1968-1973 - Josephine S. Margetts [Assembly] (R)
- 1972-1973 - Ann Klein [Assembly] (D)
- 1974-1975 - Rosemarie Totaro [Assembly] (D)
- 1978-1979 - Rosemarie Totaro [Assembly] (D)
- 1980-1983 - Leanna Brown (Chatham Borough) [Assembly] (R)
- 1984-1993 - Leanna Brown (Chatham Borough) [Senate] (R)
- 1993-1995 - Mrs. Carol J. Murphy (Montville) [Assembly] (R)

O C E A N

- 1924-1925 - Lila W. Thompson (Mrs. Joseph M. (New Egypt) [Assembly] (R)
- 1941-1959 - Lettie E. Savage [Assembly] (R)
- 1981-1982 - Hazel F. Gluck [Assembly] (R)
- 1984-1985 - Marlene Lynch Ford [Assembly] (D)
- 1990-1991 - Marlene Lynch Ford [Assembly] (D)
- 1992-1994 - Virginia Haines [Assembly] (R)

P A S S A I C

- 1926-1929 - Isabelle McCullough Summers (Paterson) [Assembly] (R)
- 1930-1931 - Mrs. Florence A. Barlow (Paterson) [Assembly] (R)
- 1934-1935 - Miss Anna Gilmore (Paterson) [Assembly] (D)
- 1 9 3 6 - Mrs. Elizabeth Van D. Smith (Paterson) [Assembly] (R)
- 1 9 3 7 - Nan V. Donohue (Paterson) [Assembly] (D)
- 1 9 3 8 - Mrs. Elizabeth Van D. Smith (Paterson) [Assembly] (R)
- 1939-1947 - Mattie S. Doremus [Assembly] (R)
- 1948-1949 - Esther N. Dilger [Assembly] (R)
- 1952-1957 - Mrs. Emma E. Newton [Assembly] (R)
- 1958-1967 - Betty McNamara Kordja [Assembly] (D)

S A L E M

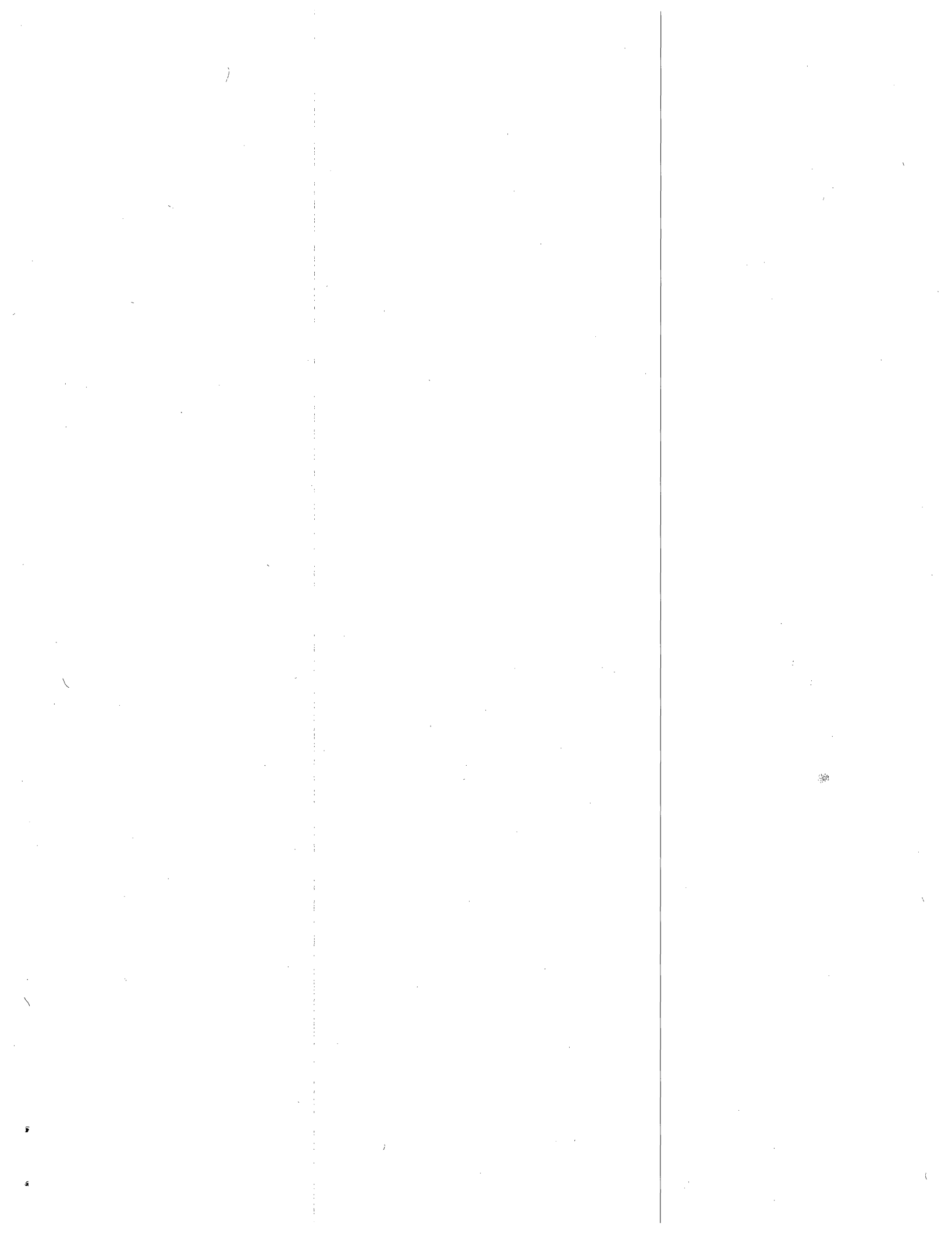
N o n e

S O M E R S E T

- 1970-1972 - Millicent H. Fenwick [Assembly] (R)
- 1975-1982 - Millicent H. Fenwick [Member of Congress] (R)
- 1994-1997 - Christine Todd Whitman [Governor] (R)

S U S S E X

N o n e



CURRENT AND PAST NEW JERSEY ELECTED WOMEN OFFICIALS - By County (11)

U N I O N

- 1 9 4 5 - Mrs. Irene T. Griffin (Westfield) [Assembly] (R)
- 1950-1956 - Mrs. Florence P. Dwyer (Elizabeth) [Assembly] (R)
- 1957-1972 - Mrs. Florence P. Dwyer (Elizabeth, Union) [Congress] (R)
- 1958-1965 - Mildred Barry Hughes (Union) [Assembly] (D)
- 1965-1968 - Mildred Barry Hughes (Union) [Senate] (D)
- 1 9 7 1 - Jerry F. English, Esq. (Summit) [Senate] (D)
- 1 9 7 1 - Elizabeth L. Cox (Summit) [Assembly] (R)
- 1974-1975 - Mrs. Betty Wilson (Berkeley Heights) [Assembly] (D)
- 1974-1980 - Barbara A. Curran (Summit) [Assembly] (R) [Resigned to be PUC Commr]
- 1982-1985 - Angela L. Perun, Esq. (Plainfield) (D:82-4, R:85) [Assembly]

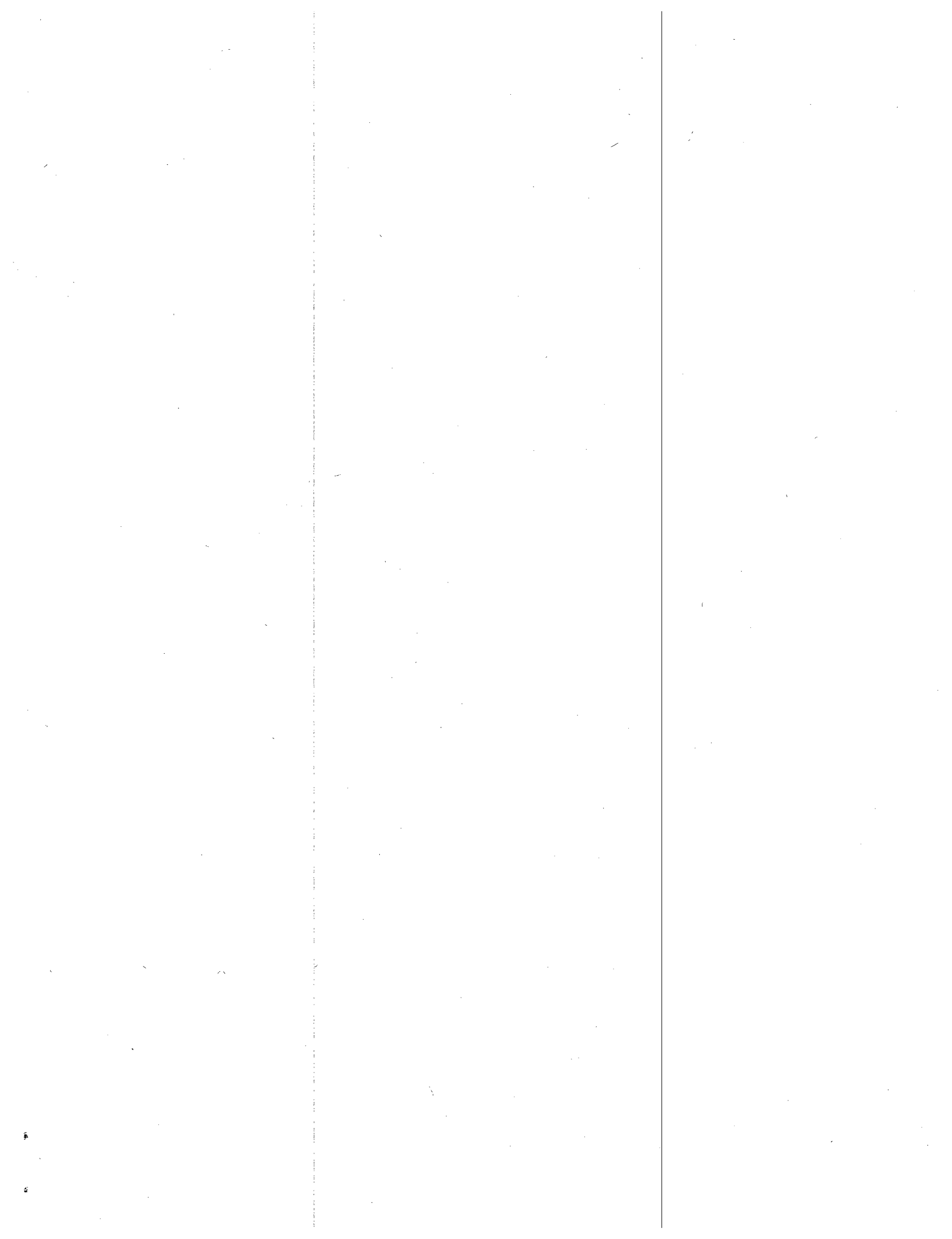
W A R R E N

- 1975-1978 - Helen Meyner (Phillipsburg) [Member of Congress] (D)

NOTE: Compiled by Division on Women from editions of NEW JERSEY LEGISLATIVE MANUAL.

3742W

7/12/95



CURRENT AND PAST NEW JERSEY ELECTED WOMEN OFFICIALS (12)

WOMEN ELECTED OFFICIALS 1921 - 1995

ALPHABETICAL

GOVERNOR

Christine Todd Whitman (R-Somerset/Hunterdon) [1994-1997]

CONGRESS : House of Representatives

Florence P. Dwyer (R-Elizabeth, Union) [1957-1972] [Formerly, Assemblywoman]
Millicent Fenwick (R-Bernardsville, Somerset) [1975-82] [Assemblywoman]
Helen S. Meyner (D-Phillipsburg, Warren) [1975-78] [Civic, community leader]
Mary K. Norton (D-Jersey City, Hudson) [1925-1950] [Formerly, Freeholder]
Marge S. Roukema (R-Ridgewood, Bergen) [1981-1996] [Civic, community leader]

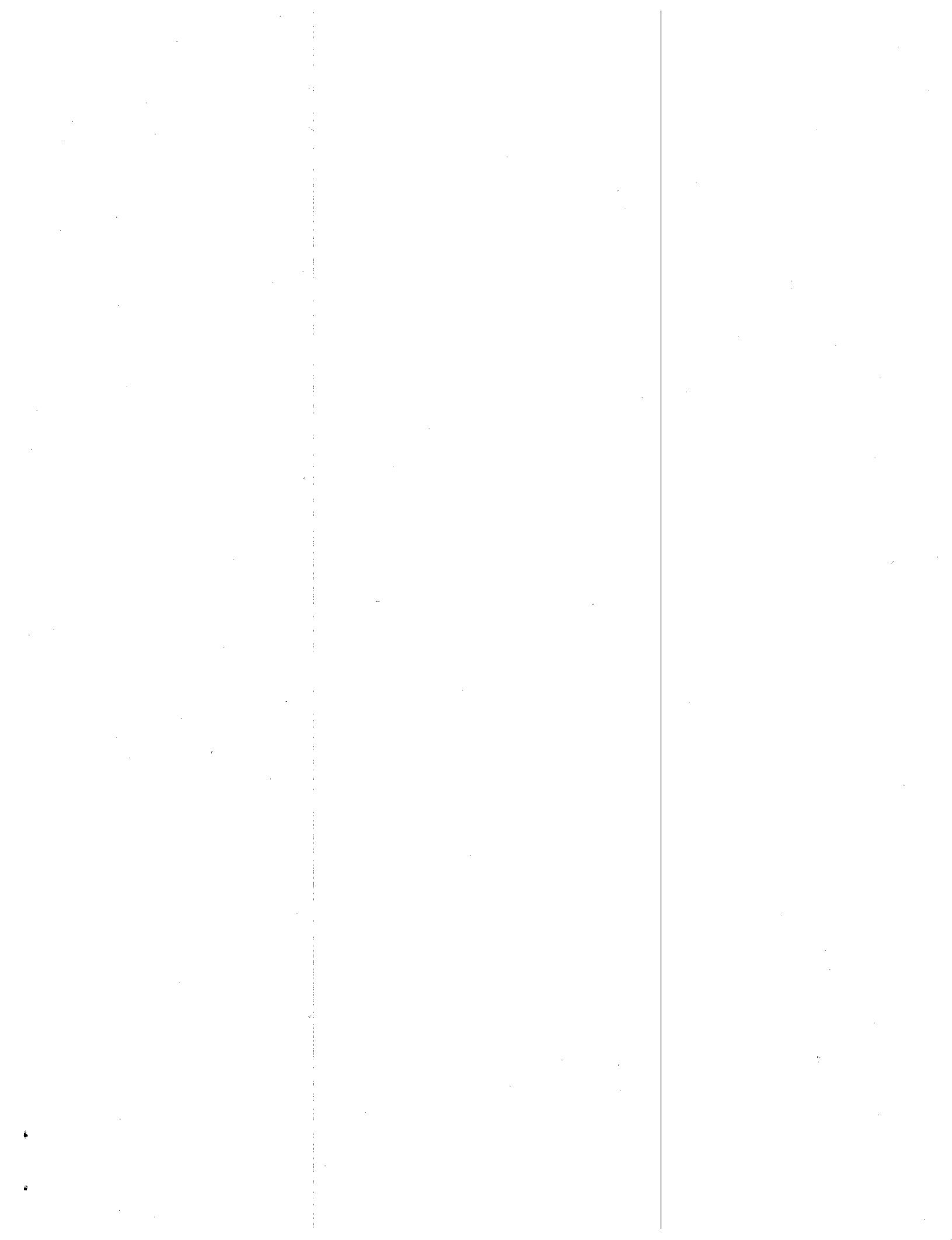
LEGISLATURE

STATE SENATE

Alene S. Ammond (D-Camden) [1974-1977]
Leanna Brown (R-Morris) [1984-1993] [Resigned for state appointment]
Catherine A. Costa (D-Burlington) [1984-1990] [Resigned for state appointment]
Jerry F. English (D-Union) [1971]
Mildred Barry Hughes (D-Union) [1966-1968]
Wynona S. Lipman (D-Essex) [1972-1997]
Anne C. Martindell (D-Mercer) [1974-1977] [Resigned for U. S. Ambassadorship]

NEW JERSEY GENERAL ASSEMBLY

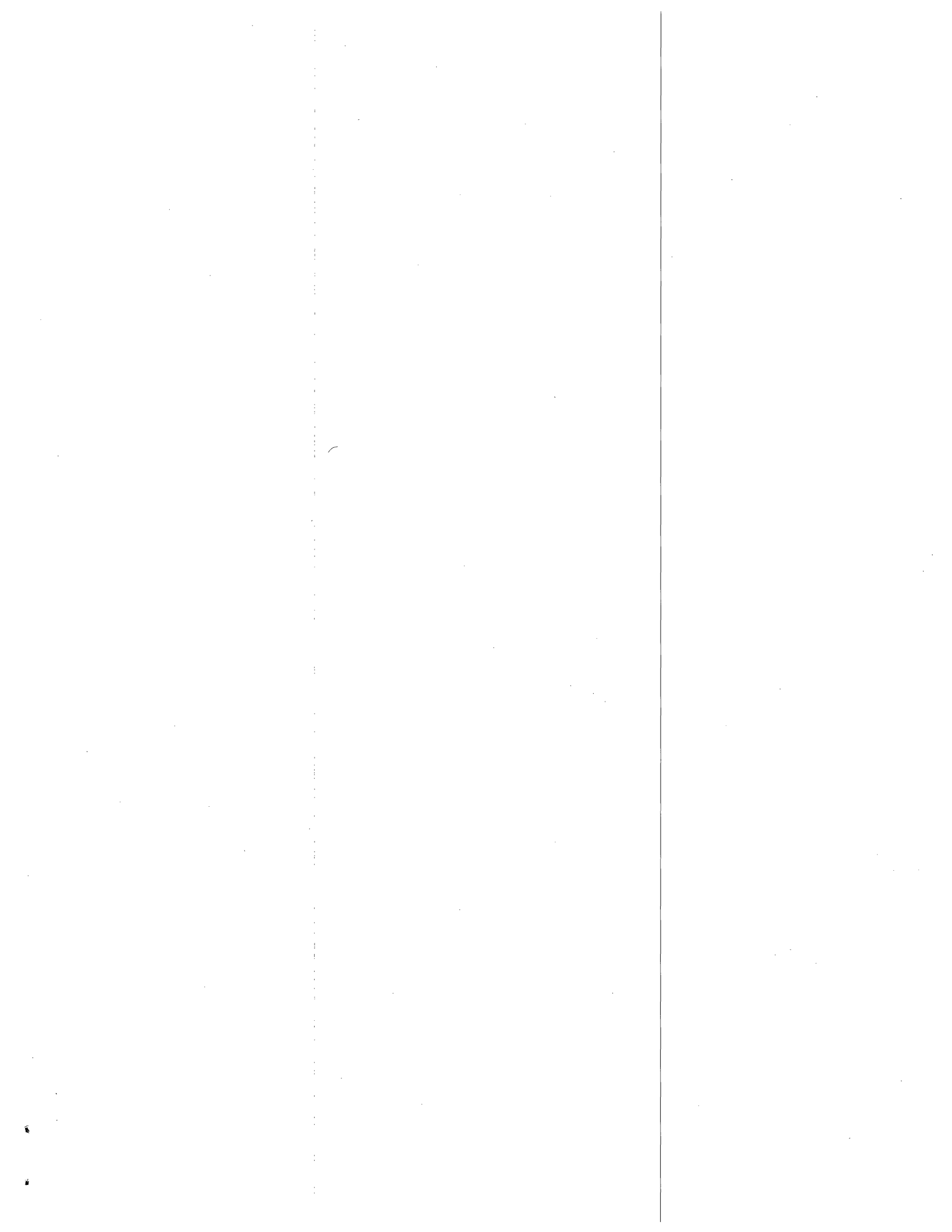
Priscilla B. Anderson (R-Burlington) [1992-1993]
Florence A. Barlow (R-Passaic) [1930-1931]
Ellen M. Berger (R-Essex) [1954-1955]
Barbara Berman (D-Camden) [1978-1979]
Gertrude Berman (D-Monmouth) [1974-1975]
Clara K. Bivona (R-Bergen) [1957-1959]
Eileen G. Brady (D-Essex) [1937]
Irene Brown (D-Hudson) [1956-1961]
Katherine (Kate) Whelan Brown (D-Hudson) [1922-1923]
Leanna Brown (R-Morris) [1980-1983]
Barbara Buono (D-Middlesex) [1995]
Jane Burgio (R-Essex) [1974-1981]
Esther B. Bush (R-Essex) [1956-1957]
Stephanie R. Bush (D-Essex) [1988-1992] [9/15/92 became DCA Commissioner]
Rosemary Carroll (D-Essex) [1932]
May Margaret Carty (D-Hudson) [1924-1931]
Dolores G. Cooper (R-Atlantic) [1982-1991]
Catherine A. Costa (D-Burlington) [1982-1983] [Elected to State Senate, 11/83]
Elizabeth L. Cox (R-Union) [1971]
Marion Crecco (R-Essex) [1986-1995]
Mary Keating Croce (Di Sabato) (D-Camden) [1974-1979]
Barbara A. Curran (R-Union) [1974-1980] [1980 appointed to PUC Board]
Harriet E. Derman Esq. (R-Middlesex) [1992-1994] [3/94 became DCA Commissioner]
Esther N. Dilger (R-Passaic) [1948-1949]
Nan V. Donohue (D-Passaic) [1937]
Kathleen A. Donovan, Esq. (R-Bergen) [1986-1987]
Mattie S. Doremus (R-Passaic) [1939-1947]
Florence P. Dwyer (R-Union) [1950-1956] [Elected to Congress 11/ 6/56]



CURRENT AND PAST NEW JERSEY ELECTED WOMEN OFFICIALS: Alphabetical (13)

GENERAL ASSEMBLY (contd)

Madge Irene Ebert (R-Essex) [1925-1926]
Clare M. Farragher (R-Monmouth) [1987-1995]
Millicent Fenwick (R-Somerset) [1970-1972] [72 became Dir, Consumer Affairs]
Catherine M. Finn (D-Hudson) [1924-1928]
Marlene Lynch Ford (D-Ocean) [1984-1991]
Margaretta Fort (R-Essex) [1924]
Pamela Jane Francisco (R-Bergen) [1927]
Grace M. Freeman (R-Essex) [1947-1951]
Mildred B. Garvin (D-Essex) [1978-1987]
Nia H. Gill (D-Essex) [1994-1995]
Anna Gilmore (D-Passaic) [1934-1935]
Hazel F. Gluck (R-Ocean) [1981-1992]
Joanna Gregory-Scocchi (R-Middlesex) [1994] [Replaced Harriet Derman, resigned]
Minna P. Greenbaum (R-Essex) [1945-1949]
Irene T. Griffin (R-Union) [1945]
Florence Lillian Haines (R-Essex) [1927-1931]
Margaret D. Haines (R-Essex) [1950-1953]
Virginia E. Haines (R-Ocean) [1992-1994] [1994 became State Lottery Director]
Constance Wilson Hand (R-Essex) [1935-1936, 1938-1941]
Mildred V. Hardester (R-Essex) [1943-1946]
Rose M. Heck (R-Bergen) [1991-1995]
Marion West Higgins (R-Bergen) [1960-1965] [Assembly Speaker, 1965]
Mildred Barry Hughes (D-Union) [1958-1965] [60-61 Asst Maj Ldr; 65 State Senate]
Agnes Crowell Jones (R-Essex) [1926-1931]
Barbara F. Kalik (D-Burlington) [1978-1991]
Greta Kiernan (D-Bergen) [1978-1979]
Ann Klein (D-Morris) [1972-1974]
Betty McNamara Kordja (D-Passaic) [1958-1967]
Margaret B. Laird (R-Essex) [1921-1922]
Gloanna Wallace MacCarthy (R-Essex) [1942-1944]
Barbara W. McConnell (D-Hunterdon) [1978-1981]
Marie F. Maebert (R-Essex) [1952-1957]
Teresa Antoinette Maloney (D-Hudson) [1932-1941]
Josephine S. Margetts (R-Morris) [1968-1973]
Wilma Marggraff (R-Bergen) [1948-1954] [Resigned to become Freeholder]
Lillian A. Mathis (R-Bergen) [1942-1947]
Alina Miskiewicz (D-Hudson) [1976-1977]
Marie S. Muhler (R-Monmouth) [1976-1986] [Appointed NJ Public Guardian]
Ann A. Mullen (D-Gloucester) [1990-1991]
Carol J. Murphy (R-Morris) [1993-1995] [Fhldr; succeeded Assemblyman Martin]
Jessie Murphy (D-Hudson) [1952-1955]
Julia C. Mutchler, M.D. (R-Morris) [1932-1933]
Emma E. Newton (R-Passaic) [1952-1957]
Mabel C. North (R-Essex) [1923]
Maureen Ogden (R-Essex) [1982-1995]
Ruby V. Perfette (R-Essex) [1954-1957]
Angela L. Perun (D/R-Union) [1982-1985]
M. Emma Peters (R-Bergen) [1929-1933]
Remay Pierce (D-Essex) [1979-19]
Jennie W. Pilch (R-Morris) [1937-1938]
Ruth A. Pilger (R-Essex) [1950-1953]
Mildred A. Preen (D-Hunterdon) [1942-1944]



CURRENT AND PAST NEW JERSEY ELECTED WOMEN OFFICIALS: LEGISLATURE (14)

GENERAL ASSEMBLY (contd)

Joan M. Quigley (D-Hudson) [1994-1995]
Elizabeth Randall, Esq. (R-Bergen) [1985-1991]
Isabelle C. Reinert (R-Camden) [1933-1935]
Olive C. Sanford (R-Essex) [1935-1936, 1938-1942]
Lettie E. Savage (R-Ocean) [1942-1959]
Mary Scanlon (D-Essex) [1978-1979]
Agnes Anne Schermerhorn (R-Essex) [1923]
Mary P. Shelton (R-Bergen) [1935]
Elizabeth Van Duyn Smith (R-Passaic) [1936, 1938]
JoAnn H. Smith (R-Middlesex) [1986-1995]
Mary MacGregor Smith (R-Bergen) [1936-1941]
Ida May Foster Stelle (R-Essex) [1927-1931]
Beatrice M. Stiles (R-Essex) [1960-1961]
Isabelle McCullough Summers (R-Passaic) [1926-1929]
Helen Chiarello Szabo (D-Mercer) [1976-1978] [78 became Mercer Supt Elections]
Quilla E. Talmadge (D-Essex) [1992-1993] [Succeeded Stephanie Bush]
Lila W. Thompson (R-Ocean) [1924-1925]
May Ashmore Thropp (R-Mercer) [1925-1927]
Rosemarie Totaro (D-Morris) [1974-1979]
Shirley K. Turner (D-Mercer) [1994-1995]
Myrtle M. Trube (R-Essex) [1933-1934]
Marian F. Urbanski (D-Hudson) [1926-1928]
Eugenia M. V. Urbanski-Courtney, Esq. (D-Hudson) [1947-1949]
Jennie C. Van Ness (R-Essex) [1921]
Charlotte Vandervalk (R-Bergen) [1991-1995]
Jacqueline Walker (D-Monmouth) [1984-1986]
Mary Virginia Weber (R-Gloucester) [1992-1993]
Loretta Weinberg (D-Bergen) [1992-1995]
Madeline A. Williams (D-Essex) [1958-1960]
Betty Wilson (D-Union) [1974-1980]
Barbara W. Wright (R-Middlesex) [1992-1995]
Joan M. Wright (R-Bergen) [1982-1983] [1983 appointed Dir., Div on Women]
Mary L. Yuill (R-Essex) [1933-1934]

K E Y S

* = Formerly, Freeholder
= Formerly, Assemblywoman
+ = Civic, community leader/activist
% = Resigned to take federal appointment
' = Resigned to take State appointment
" = Resigned to become Freeholder
** = Elected to Congress
*+ = Elected to State Senate
++ = Assistant Majority Leader
"" = Resigned to become County Superintendent of Elections

3742W

7/12/95

prepared by
Elizabeth L. Cox

